

Public Reporting Principles and Priorities at OSHPD

Christopher Krawczyk, PhD
Information Services Division
Chief Analytics Officer

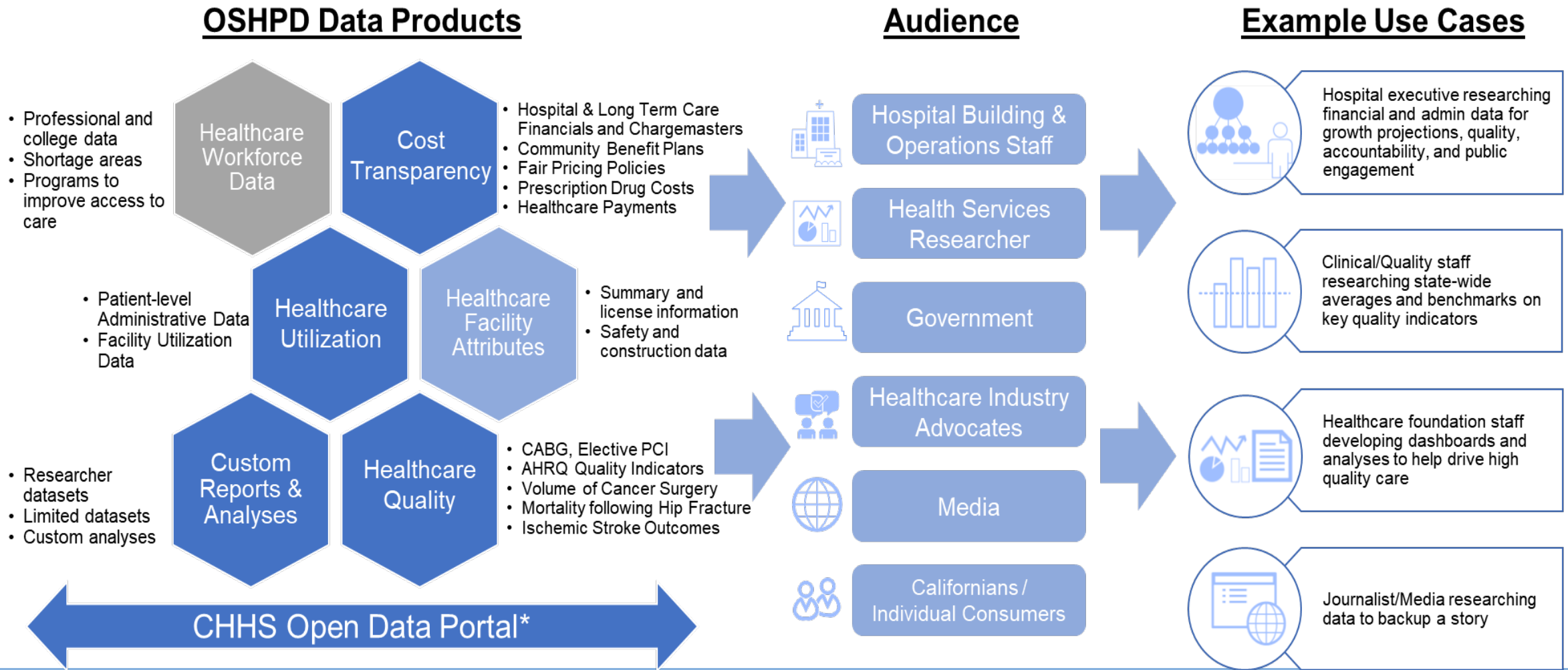
Presentation Objectives

- Provide an overview of current OSHPD public reporting
 - Priorities, principles, practices
 - Data and product portfolio overview
 - Stakeholder engagement
- “Set the stage” for future public reporting, specifically HPD

Current OSHPD Healthcare Data and Reporting

- **OSHPD collects data** from approximately 8,000 California licensed health facilities
- **OSHPD provides over 150 publicly available** reports, datasets, outcome and performance ratings, and unique special studies such as analyses on severe sepsis hospitalizations, diabetes, and cancer surgery volume
- **Risk-adjusted data** includes hospital outcome ratings for heart surgery, stroke, readmissions, hip fractures, and other procedures, as well as surgeon-level outcomes for coronary artery bypass grafts
- **Cost transparency data** includes hospital and long-term care facility financials, hospital Chargemasters, and prescription drug costs
- **Additional publicly released studies** are available on timely health topics such as preventable hospitalizations, strokes, utilization trends, and disparities
- **OSHPD fulfills over 250 requests** for record level datafiles and **nearly 100 custom analyses** annually

Current OSHPD Data – Audience & Use Cases



Mandated Analyses

- Risk adjusted performance reports, facility (hospital) level
 - Inpatient Mortality Indicators, AHRQ
 - 30-day review
- Coronary Artery Bypass Graft (CABG), hospital level (annual) and surgeon level (bi-annual)
 - 60-day review, surgeon appeal process
 - Recast: transcatheter aortic valve replacement (TAVR), interventional cardiovascular procedures (with Clinical Advisory Panel recommendation)
- Elective Percutaneous Coronary Intervention (PCI), hospital level (annual)
- Prescription Drug Cost Transparency (CTR_x)
 - New Drug Report
 - Wholesale Acquisition Cost (WAC)
- *Other cost transparency, health care utilization, and facility disclosure reporting required to be made publicly available*

Mandated Analyses – Performance Report

- Inpatient Mortality Indicators
 - AHRQ
 - Six medical conditions (Acute Myocardial Infarction, Acute Stroke, Gastrointestinal Hemorrhage, Heart Failure, Hip Fracture, and Pneumonia)
 - Five surgical procedures (Abdominal Aortic Aneurysm Repair – Open and Unruptured, Abdominal Aortic Aneurysm Repair – Endovascular and Unruptured, Carotid Endarterectomy, Pancreatic Resection, and Percutaneous Coronary Intervention).



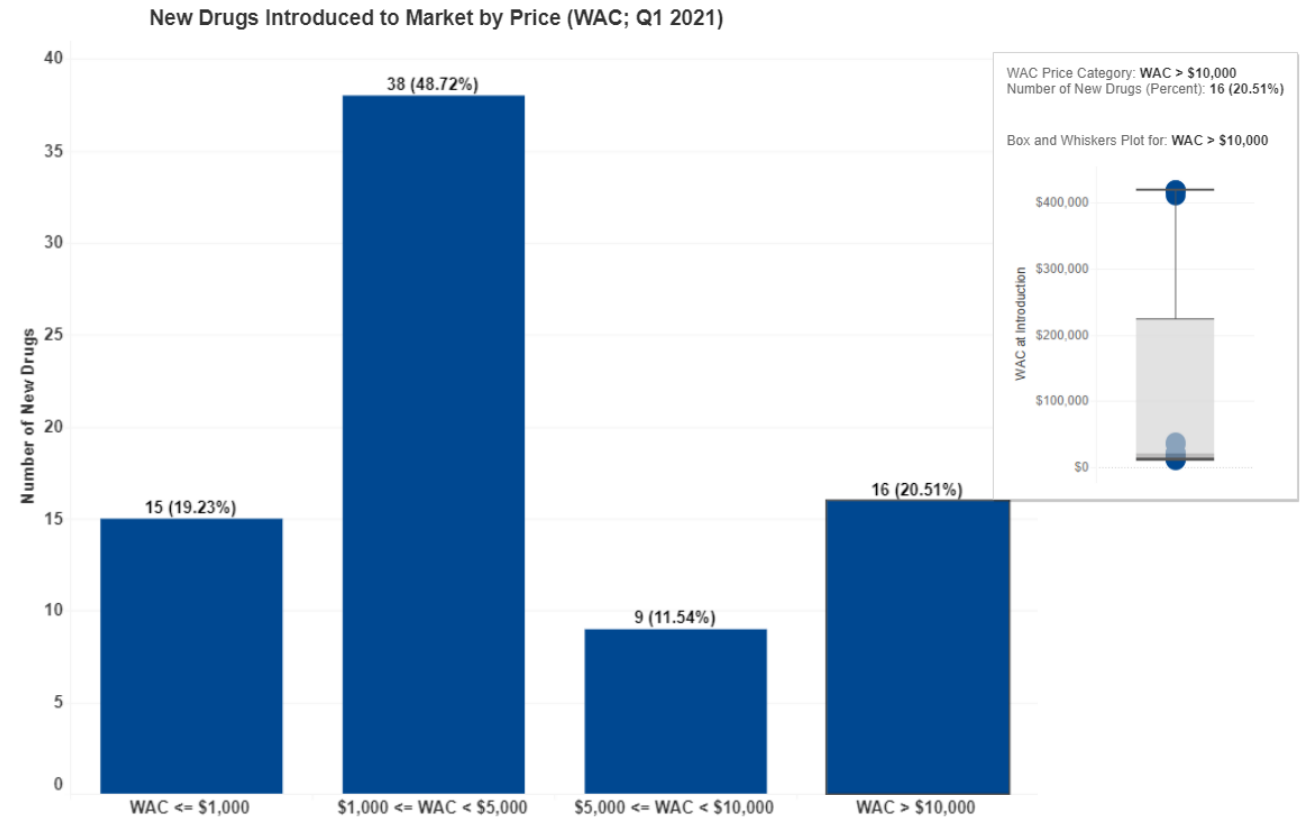
California Hospital Risk-Adjusted Mortality Rates (RAMR), Total Deaths and Cases, and Quality Ratings for Inpatient Mortality Indicators (Conditions), 2018

County	Hospital Name	Acute Myocardial Infarction	Acute Stroke				Gastro-Intestinal Hemorrhage	Heart Failure	Hip Fracture	Pneumonia
			Total	Hemorrhagic	Ischemic	Subarachnoid				
		NOTE: In each cell, the first line indicates Risk-Adjusted Mortality Rate (RAMR), the second line indicates total deaths; total cases, and the third line indicates any quality rating.								
	STATEWIDE	5.8% (3,172;54,722)	8.9% (5,568;62,442)	20.6% (2,589;12,584)	4.9% (2,316;46,966)	22.9% (663;2,892)	2.4% (1,348;56,770)	2.7% (3,042;111,237)	1.7% (464;27,092)	3.1% (1,627;52,007)
Alameda	Alameda Hospital	13.1% (1;12)	8.1% (6;102)	20.2% (2;12)	5.3% (4;88)		1.4% (1;63)	2.8% (6;203)	4.1% (1;28)	0.9% (1;110)
	Alta Bates Summit Medical Center	3.9% (17;420)	4.4% (11;314) Better	31.8% (4;8)	1.9% (7;303) Better	0.0% (0;3)	1.7% (7;322)	1.2% (13;312) Better	2.3% (4;112)	2.7% (5;137)
	Alta Bates Summit Medical Center – Alta Bates Campus	4.5% (1;22)	6.8% (26;202)	18.3% (24;101)	0.5% (1;98) Better	24.0% (1;3)	1.4% (3;195)	2.2% (10;324)	0.8% (1;92)	1.3% (1;74)
	Eden Medical Center	5.5% (5;47)	6.8% (59;519) Better	16.2% (23;112)	3.5% (27;361) Better	20.4% (9;46)	1.1% (3;193)	2.2% (9;337)	0.9% (1;114)	2.7% (3;113)
	Highland Hospital	8.4% (11;163)	10.7% (22;158)	24.0% (12;44)	6.4% (7;107)	26.4% (3;7)	0.8% (2;133)	2.5% (7;355)	1.5% (1;48)	2.0% (2;134)
	Kaiser Foundation Hospital – Fremont	9.1% (10;77)	7.8% (10;110)	19.5% (6;33)	4.1% (4;74)	0.0% (0;3)	1.8% (1;85)	3.3% (9;176)	0.0% (0;67)	4.0% (5;100)
	Kaiser Foundation Hospital – Oakland/Richmond	5.6% (16;267)	11.4% (44;481)	21.0% (17;93)	7.3% (24;379)	46.1% (3;9)	1.6% (6;305)	3.5% (34;859)	2.5% (5;181)	1.6% (4;221)
	Kaiser Foundation Hospital – San Leandro	3.0% (3;61)	5.5% (14;244) Better	2.4% (1;65)	4.9% (1;167)	16.9% (2;11)	1.5% (3;172)	2.7% (15;344)	0.0% (0;101)	2.0% (3;119)
	Saint Rose Hospital	8.8% (12;185)	7.5% (3;59)	26.8% (2;6)	2.4% (1;53)		2.6% (3;100)	2.8% (7;259)	0.0% (0;25)	3.2% (5;170)
	San Leandro Hospital	0.0% (0;6)	8.9% (2;27)				2.2% (3;82)	1.7% (3;207)	0.0% (0;18)	1.3% (1;92)
Stanford Health Care – ValleyCare**	4.8% (8;151)	6.5% (3;70)		2.9% (2;68)		0.8% (1;116)	4.4% (17;294)	1.7% (2;83)	4.4% (5;113)	
Washington Hospital – Fremont	6.9% (17;257)	10.9% (31;312)	23.9% (17;74)	8.4% (13;220)	7.7% (1;18)	3.2% (8;323)	4.9% (22;519) Worse	2.5% (2;108)	3.5% (12;347)	
Amador	Sutter Amador Hospital	8.4% (1;9)	10.4% (9;100)	27.9% (2;7)	5.4% (6;91)		2.0% (1;56)	0.0% (0;105)	2.8% (3;53)	2.4% (2;80)

Mandated Analyses – Prescription Drug Cost Transparency

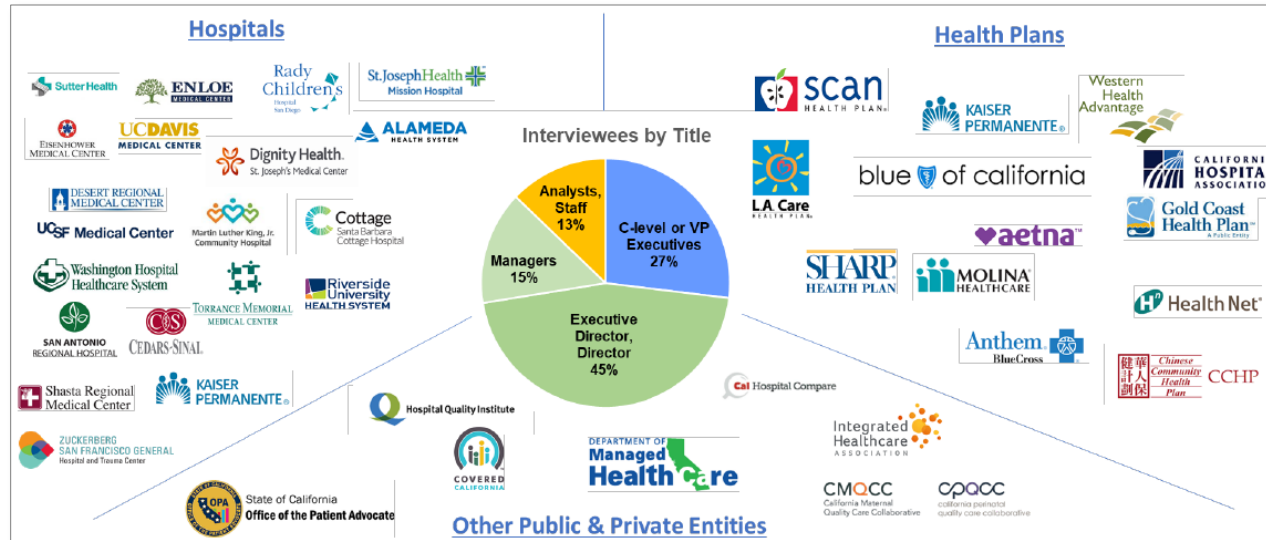
New Drug Data Analytics

The graph below includes submitted New Prescription Drug data for Quarter 1 of 2021. The graph displays data that shows the number of Prescription Drugs Introduced to the Market by WAC at introduction to market. The data included in the graphs can be downloaded on the California Health and Human Services Open Data Portal ([ODP](#)).



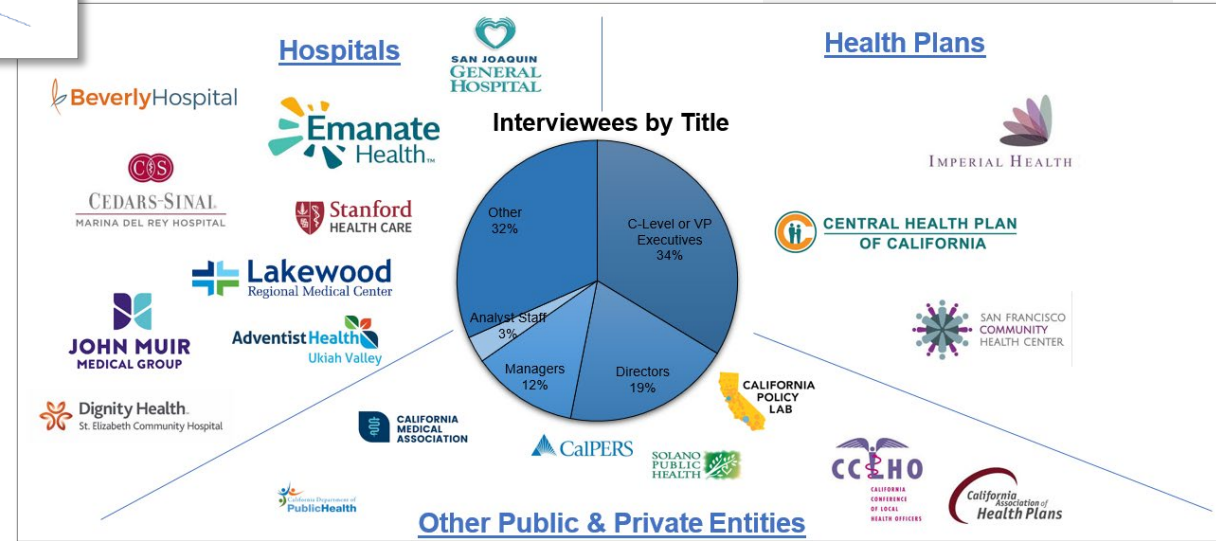
The tooltip contains a box and whisker plot of the respective WAC Price Category, where each dot represents a submitted report.

Priority Topic Analytics – Stakeholder Outreach and Engagement



Cohort 1 – 2019

Cohort 2 – 2020



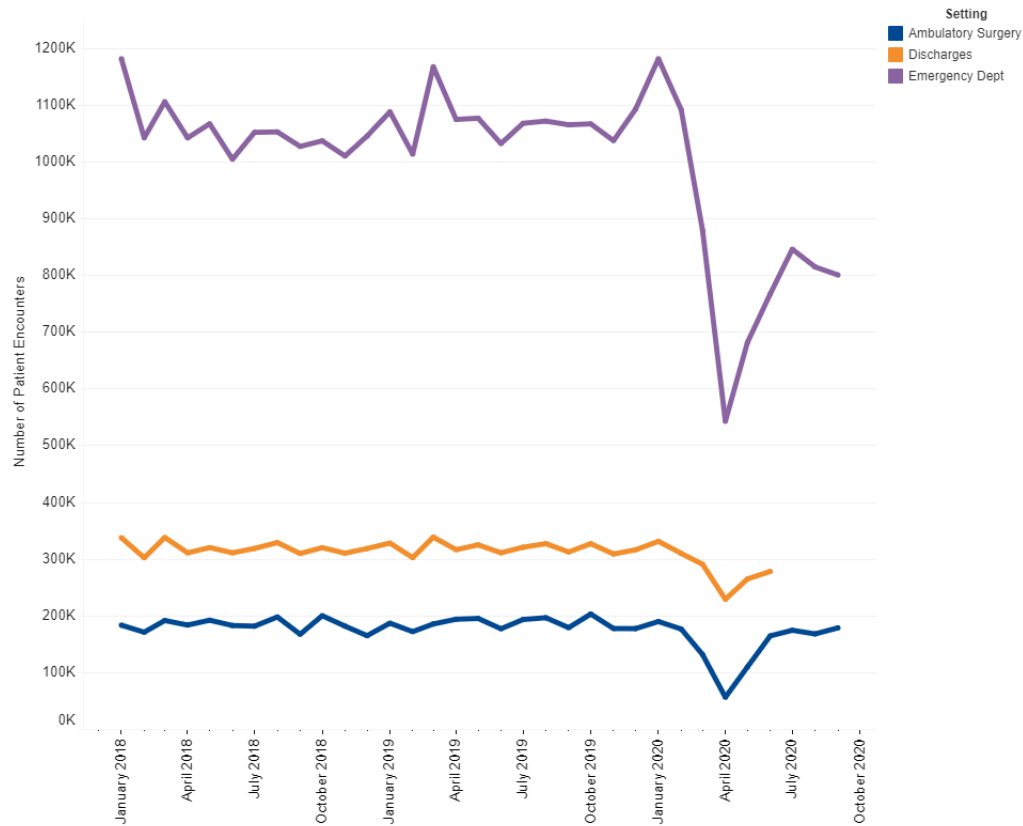
Priority Topic Analytics - Generational Model of Data (GMoD)

- Topic Areas
 - Agency for Healthcare Research and Quality (AHRQ) Utilization Indicators
 - Hospital Readmissions*
 - AHRQ Prevention Quality Indicators*
 - AHRQ Patient Safety Indicators*
 - Emerging public health and health care topics, ex. COVID-19
 - Statewide initiatives, ex. persons experiencing homelessness
- Data Visualization & “DataPulse” Reports
 - Topical, visualized healthcare analyses using OSHPD data
- California Health and Human Services Agency Open Data Portal

*Let’s Get Healthy California Measure

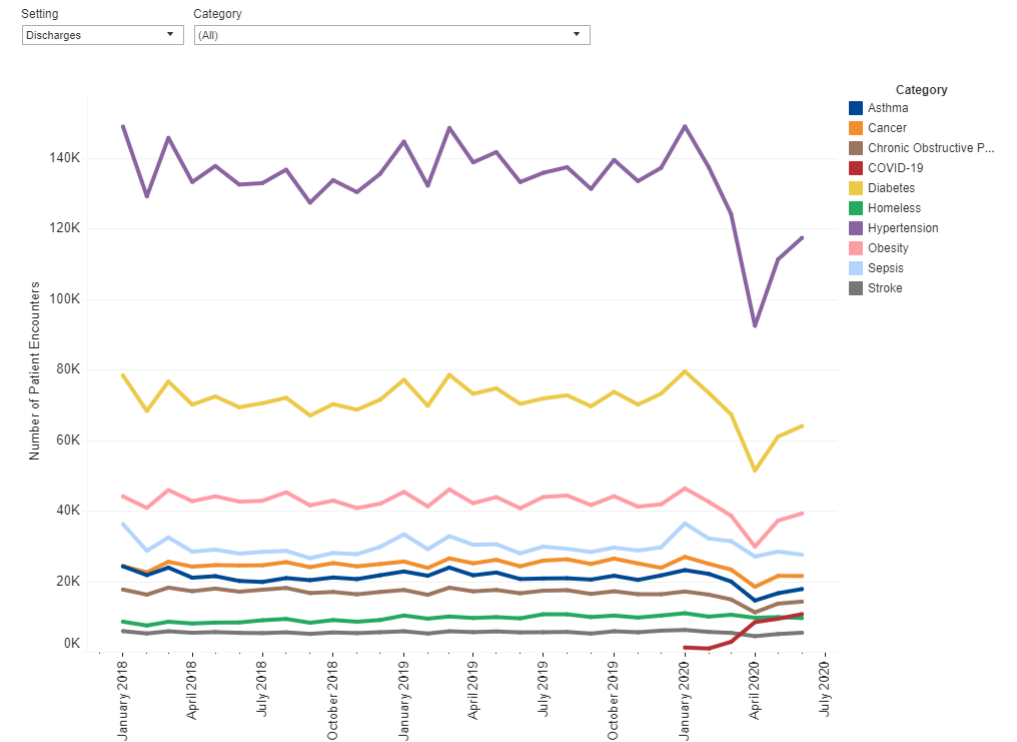
	A	B	C	D	E
	OSHPD ID	Topic Area	Measure	SDOH/SDGI (yes/no)	Place of Origin J:JL4D:LD
1	6	Diabetes	Prevention Quality Indicator (PQI) 14 Uncontrolled Diabetes Admission Rate		GMoD 2020
7	7	Diabetes	Prevention Quality Indicator (PQI) 93 Prevention Quality Diabetes Composite		GMoD 2020
8	8	Cardiovascular (Clinical Data)	Risk-adjusted Mortality Rates for Elective PCIs by Hospital		GMoD 2020
9	9	Cardiovascular (Clinical Data)	Risk-adjusted Post-procedure Stroke Rates for Elective PCIs by Hospital		GMoD 2020
10	10	Cardiovascular (Clinical Data)	Post-procedure Emergency CABG Rates for Elective PCIs by Hospital (no longer risk adjusted)		GMoD 2020
11	11	Cardiovascular (Admin Data)	Prevention Quality Indicator (PQI) 07 Hypertension Admission Rate		GMoD 2020
12	12	Cardiovascular (Admin Data)	Inpatient Quality Indicator (IQI) 30 Percutaneous Coronary Intervention (PCI) Mortality Rate		GMoD 2020
13	13	Sepsis	Patient Safety Indicator (PSI) 13 Postoperative Sepsis Rate (data won't be posted on Hospital Compare but will be available on Data.Medicare.Gov)		GMoD 2020
14	14	Orthopedics	Inpatient Quality Indicator (IQI) 19 Hip Fracture Mortality Rate		GMoD 2020
15					

Utilization Trends and COVID-19



Note: Data is preliminary as of May 2021.

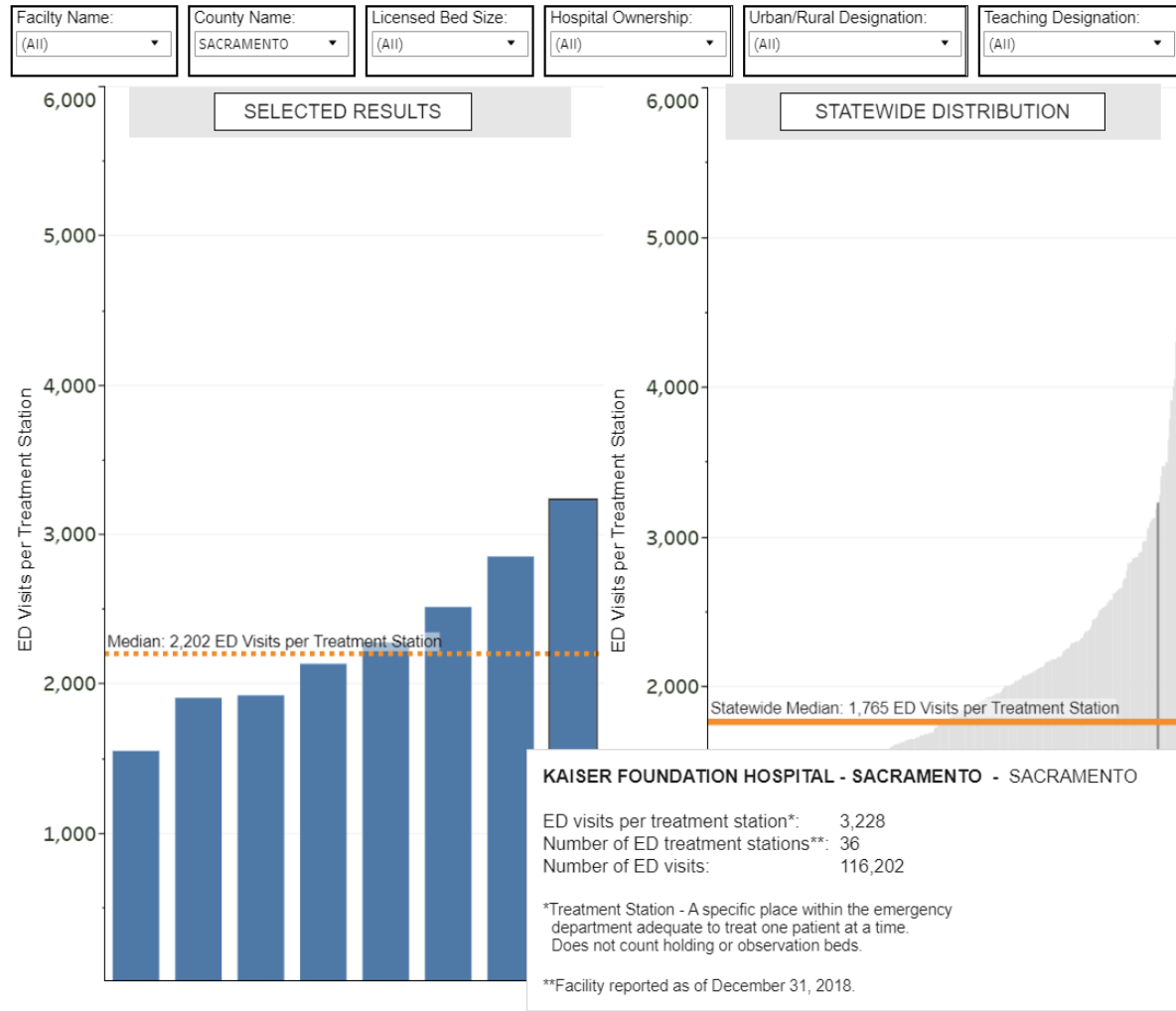
Utilization trends by licensed health care setting



Note: Data is preliminary as of May 2021. The number of encounters is all recorded health care encounters for a specific health category. Individual patients may be counted in more than one category if they were diagnosed with multiple types of health categories during a single encounter (e.g., a person who was homeless and had diabetes would be counted in both homeless and diabetes categories).

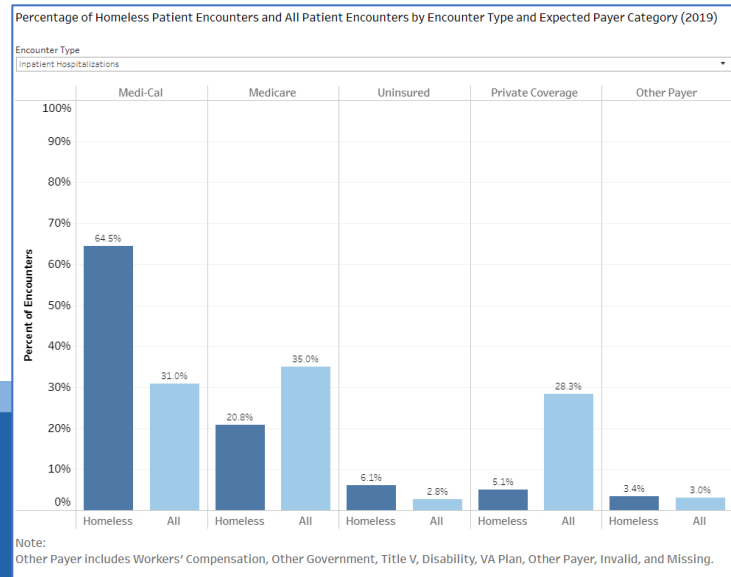
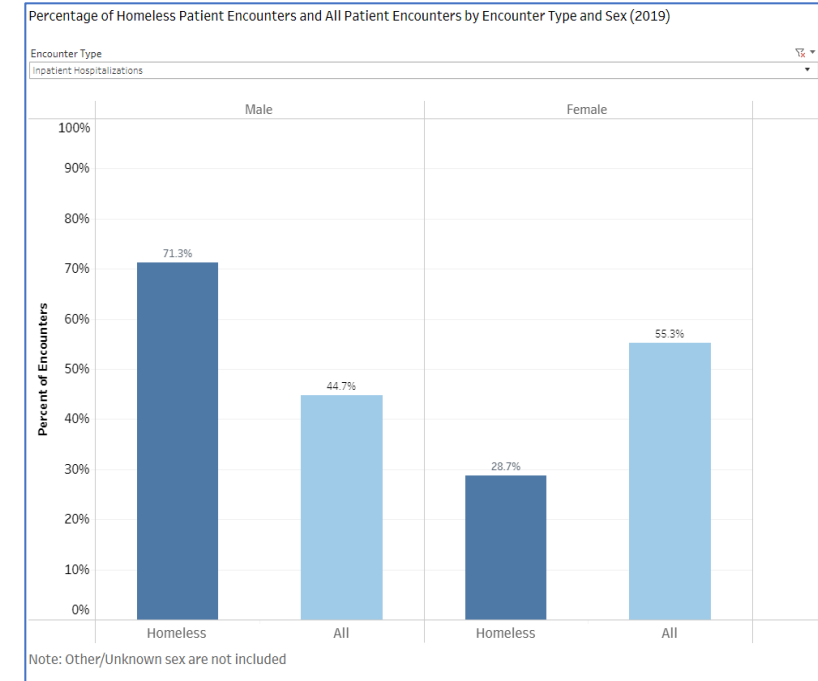
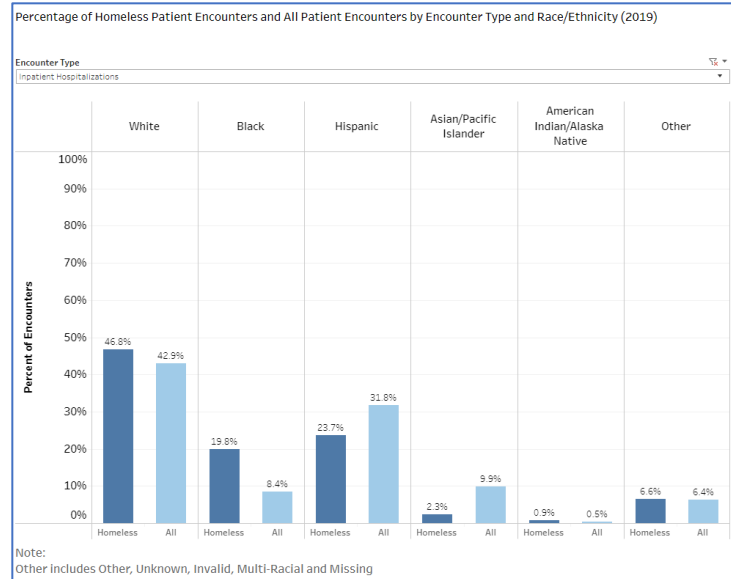
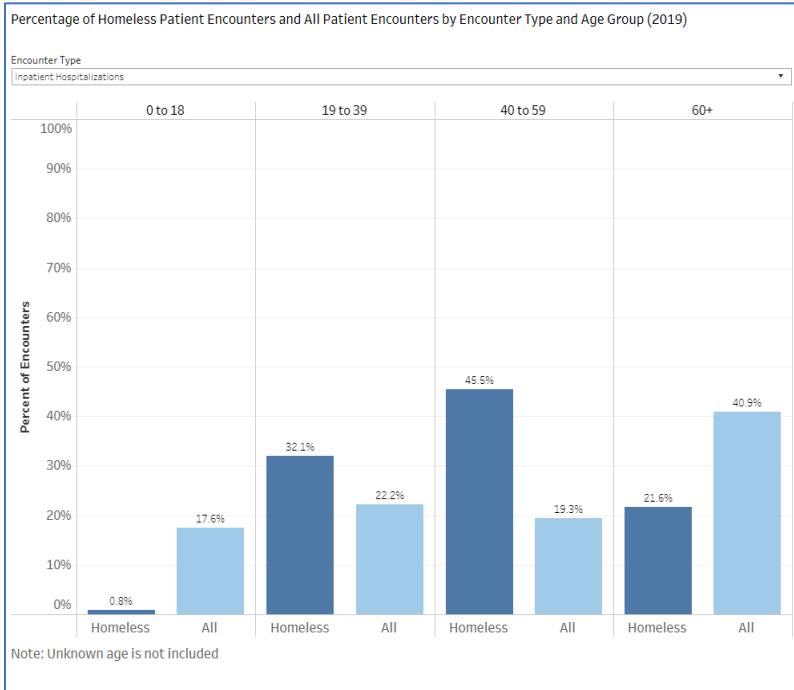
Utilization trends by health/population category

Emergency Department Volume and Capacity



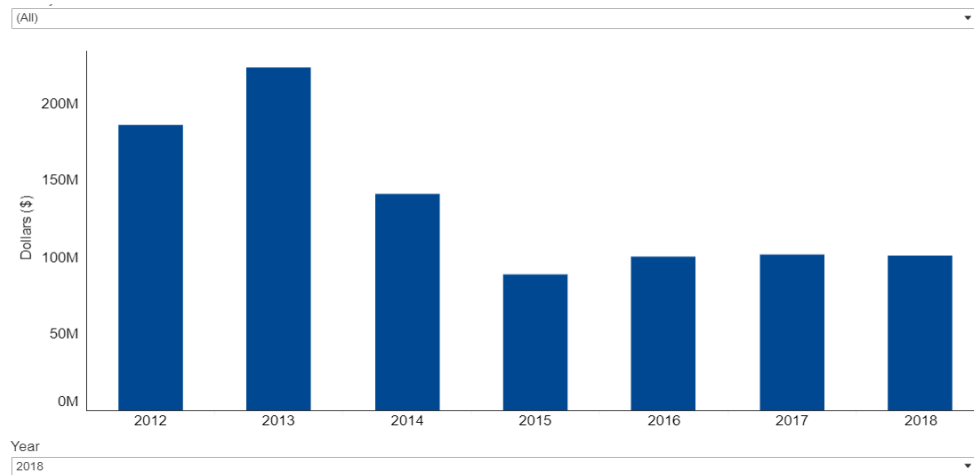
- Future iterations (generations)
 - Proportion attributable to persons experiencing homelessness, mental health care in the ED, primary care in the ED
 - Social determinants of health by geographic area
 - Workforce shortages
 - Incorporate Cost

Persons Experiencing Homelessness

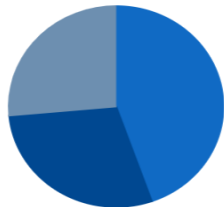


Financial Data – County and Facility

Alameda County



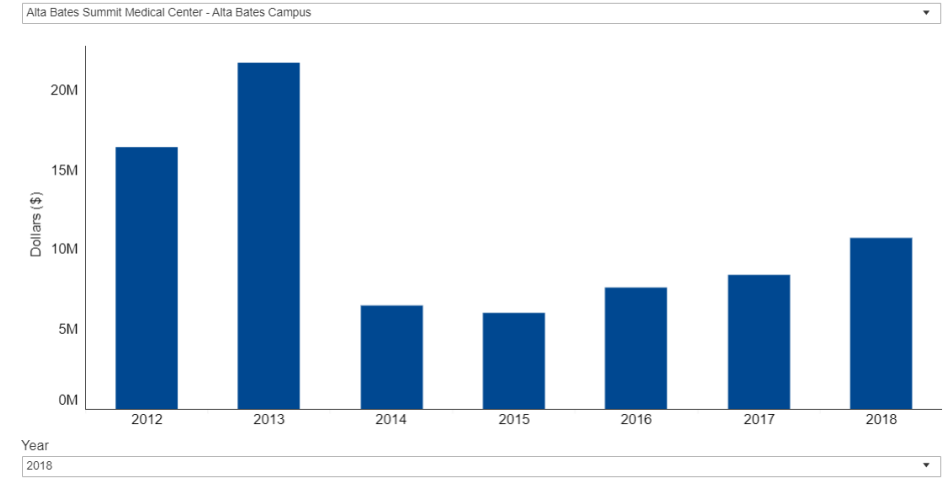
■ Bad Debt (Costs)
 ■ Charity - Other (Costs)
 ■ County Indigent Programs* (Costs)



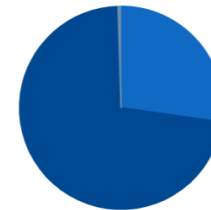
Uncompensated Care Costs by Category

Bad Debt (Costs)	45,063,828
Charity - Other (Costs)	29,252,278
County Indigent Programs* (Costs)	26,700,281

Alta Bates – Main Campus



■ Bad Debt (Costs)
 ■ Charity - Other (Costs)
 ■ County Indigent Programs* (Costs)



Uncompensated Care Costs by Category

Bad Debt (Costs)	2,917,565
Charity - Other (Costs)	7,739,848
County Indigent Programs* (Costs)	51,181

Partner Organization Collaborative Products

Cancer Surgery Volume

CHCF

Stanford University

UCLA

UCSF

Northwestern University

Covered California

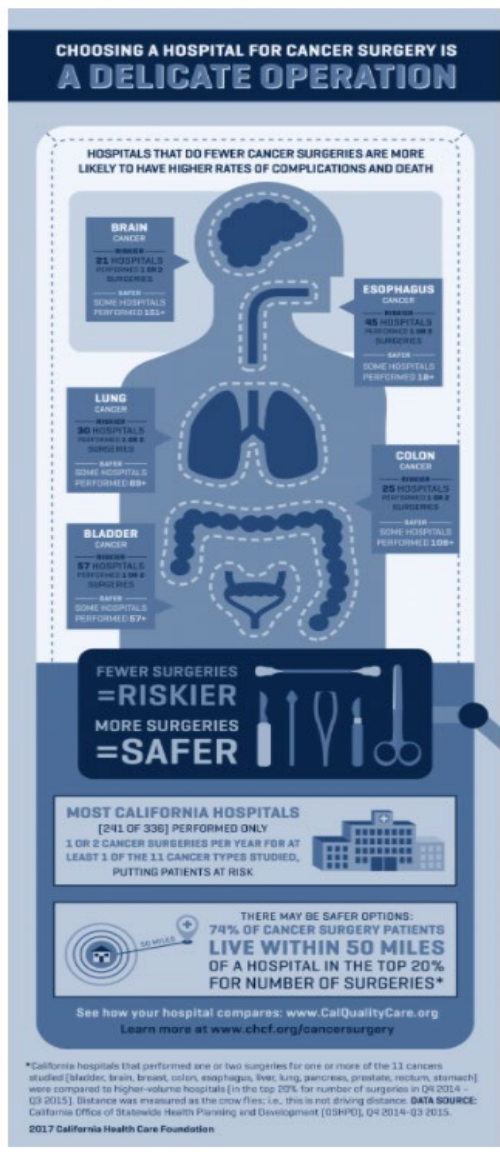
CHART (now

CalHospitalCompare.org)

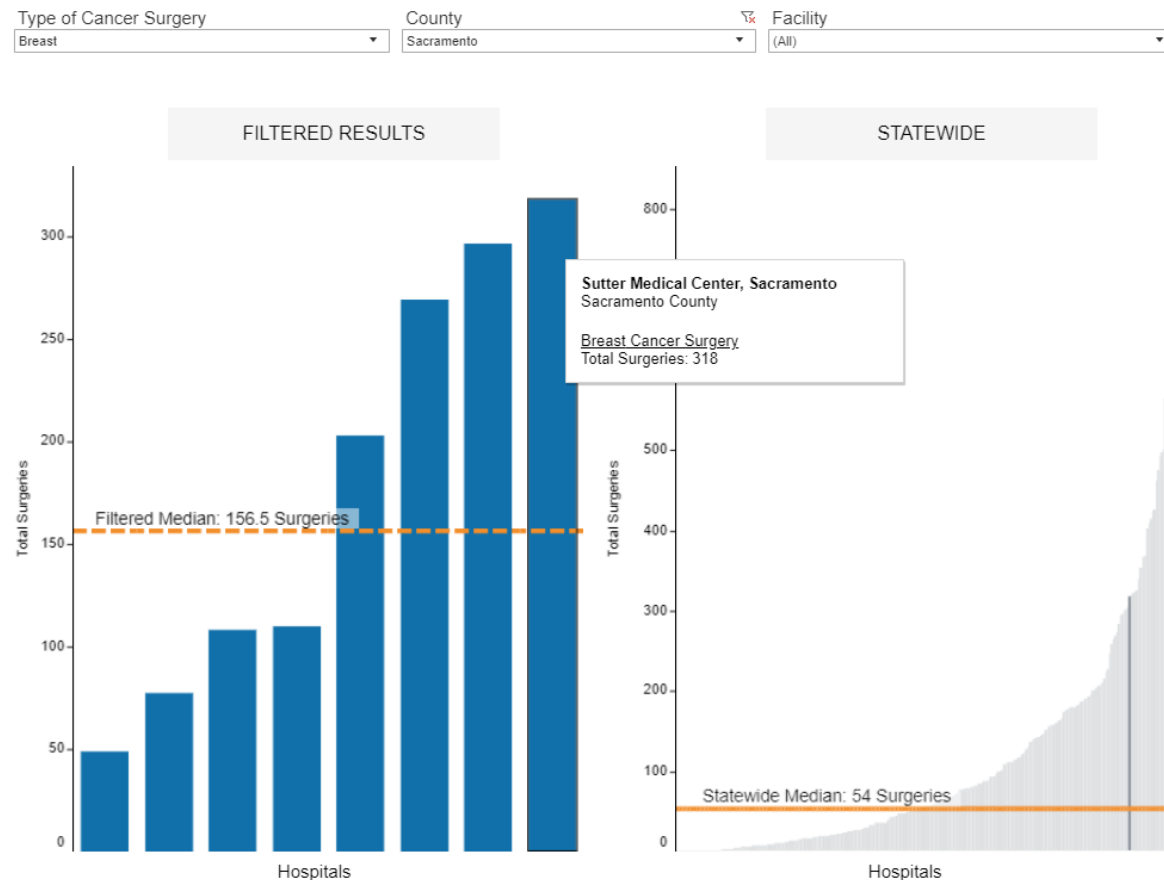
PBGH

Sharp Healthcare

Consumers Union



Number of Cancer Surgeries by Type of Cancer Surgery, County and Facility, 2019

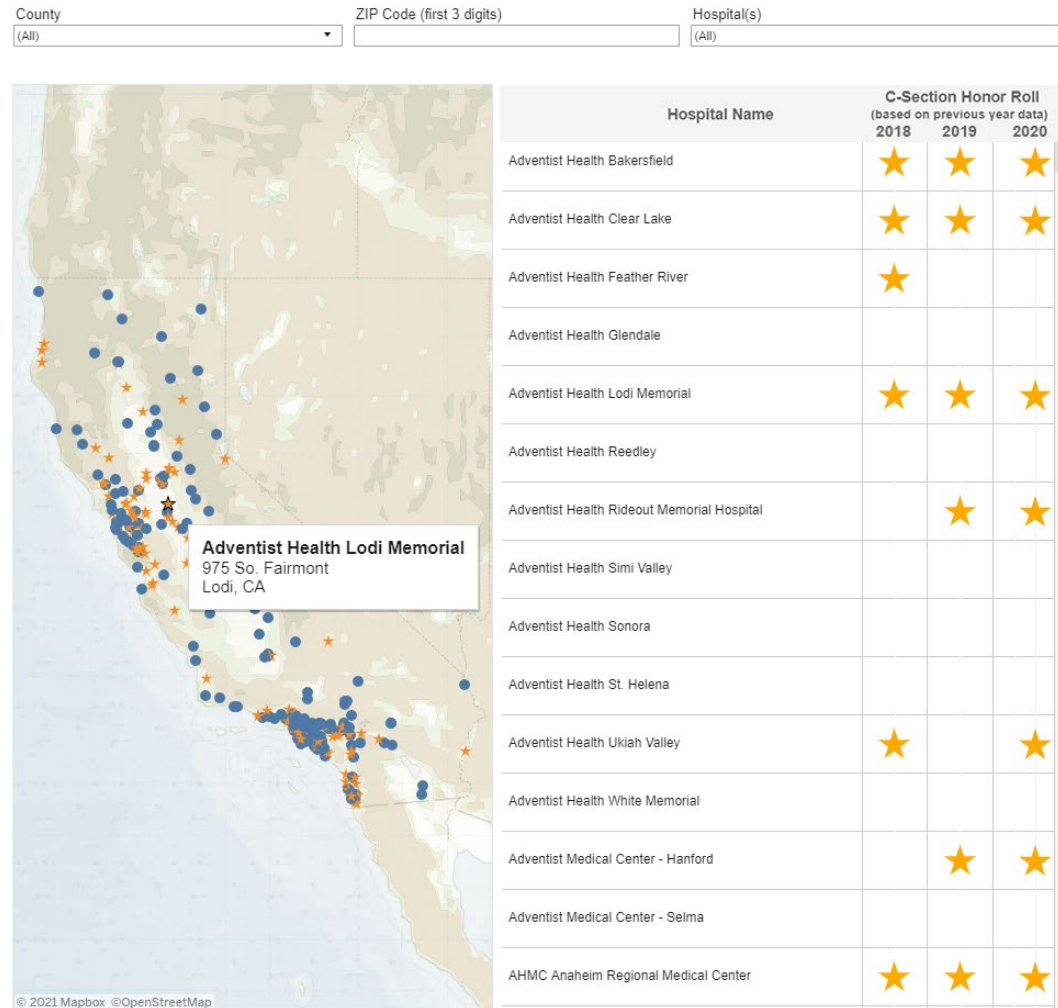


Partner Organization Collaborative Products

Hospital C-Section Honor Roll and Maternal Care Quality Indicators, 2020

California Maternal Quality Care Collaborative (CMQCC)

CalHospitalCompare.org



Key Collaborations

CHHS Agency

- CHHS Center for Data Insights and Innovation
- CHHS Data Subcommittee:
 - Research Data Hub / Record Reconciliation Initiative
 - De-Identification Guidance
 - Facility ID Crosswalk Initiative
- COVID-19 Data & Analytics Steering Committee
- Let's Get Healthy California Initiative
- Homelessness Data Initiatives
- Cradle to Career Initiative
- Master Plan on Aging
- ACEs Aware Initiative

Department of Public Health

- California Conference of Local Health Officers
- California Conference of Local Health Data Managers and Epidemiologists
- Vital Statistics Advisory Committee
- California Epidemiologic Investigative Service Executive Committee
- Prescription Opioid Misuse and Overdose Prevention Workgroup

Others

- National Association of Health Data Organizations (NAHDO)
- NAHDO APCD Council
- National Academy for State Health Policy
- California Health Information Association
- CA Maternal Quality Care Collaborative (CMQCC)
- CA Perinatal Quality Care Collaborative (CPQCC)
- California Healthcare Foundation
Healthcare Almanac Advisory Committee
- CalHospital Compare

Open Data Portal

- All public (de-identified, aggregated) data are available on the CHHS Open Data Portal, integrated with the OSHPD website
- Over 100 public data are available in open, machine-readable, and API-enabled formats with comprehensive metadata

The screenshot displays the CHHS Open Data Portal interface. On the left, the OSHPD logo and name are visible, along with navigation links for 'Home', 'Departments', and 'Office of Statewide Health Planning and Development'. A search bar indicates '119 datasets found'. The main content area shows a list of datasets with their respective metadata, including titles, descriptions, and modification dates. A table of data is overlaid on the page, showing columns for ID, Year, Strata, Strata Name, County, Total Admits (ICD-9), and 30-day Readmits (ICD-9). On the right, a 'Data Sets' search interface is shown, including a search bar, 'Order by' dropdown (set to 'Relevance'), and 'Filter by' dropdown (set to 'Show All Topics'). Below the search bar, a list of datasets is displayed, including 'Licensed Facility Crosswalk', 'Health Professional Shortage Area Dental', 'Health Professional Shortage Area Primary Care', 'Health Professional Shortage Area Mental Health', and 'Mssa Detail', each with its modification date and available file formats (CSV, ESRI REST, GEOJSON, HTML, KML, ZIP).

_id	Year	Strata	Strata Name	County	Total Admits (ICD-9)	30-day Readmits (ICD-9)
1	2011	Overall	Overall	State	1948641	272268
2	2011	Age	18 to 44 years	State	326070	36855
3	2011	Age	45 to 64 years	State	659801	90891
4	2011	Age	65 years and above	State	962771	144522
5	2011	Sex	Male	State	901776	132417
6	2011	Sex	Female	State	1046865	139851
7	2011	Race-Ethnicity	White	State	1127791	150492
8	2011	Race-Ethnicity	Hispanic	State	416845	58534
9	2011	Race-Ethnicity	African-American	State	190344	34566

Open Data – Hospital Utilization and Volume Indicators (AHRQ)

- Utilization Indicators
 - Cesarean Delivery Rate, Uncomplicated
 - Primary Cesarean Delivery Rate, Uncomplicated
 - Vaginal Birth After Cesarean (VBAC) Rate, All
 - Vaginal Birth After Cesarean (VBAC) Rate, Uncomplicated
 - Laparoscopic Cholecystectomy (Retired 2016)
- Volume Indicators
 - AHRQ retired after 2017

Utilization Rates for Selected Medical Procedures in California Hospitals, 2019*
 Office of Statewide Health Planning and Development, Hospital Patient Data

County	Hospital Name	Possible Over Utilization ¹		Possible Under Utilization ²	
		Uncomplicated Cesarean Delivery	Uncomplicated Primary Cesarean Delivery	Vaginal Birth after Cesarean (VBAC)	Uncomplicated VBAC
NOTE: In each cell, the first line indicates the rate per 100 deliveries. The number in parentheses () on the second line indicates the total number of deliveries or procedures performed.					
	STATEWIDE AVERAGE	26.9 (105,245)	14.8 (47,885)	15.1 (11,421)	15.3 (10,355)
Alameda	Alta Bates Summit Medical Center – Alta Bates Campus	21.7 (918)	13.2 (469)	31.1 (233)	32.3 (214)
	Eden Medical Center	19.7 (196)	9.8 (87)	0.8 (1)	0.9 (1)
	Highland Hospital	21.9 (250)	15.1 (150)	28.9 (46)	30.6 (44)
	Kaiser Foundation Hospital – Oakland/Richmond	24.3 (664)	17.5 (418)	24.4 (93)	25.7 (87)
	Kaiser Foundation Hospital – San Leandro	22.2 (792)	13.9 (428)	25.7 (145)	26.9 (134)
	Saint Rose Hospital	22.9 (107)	10.3 (41)	5.5 (4)	4.3 (3)
	Stanford Health Care – ValleyCare	31.2 (397)	17.0 (174)	8.6 (23)	9.0 (22)
	Washington Hospital – Fremont	27.7 (392)	16.5 (201)	5.2 (11)	5.5 (11)
	Amador	Sutter Amador Hospital	28.0 (69)	12.4 (25)	
Butte	Enloe Medical Center – Esplanade	25.7 (484)	14.3 (229)	11.5 (37)	11.5 (33)

Additional Contacts and Resources

OSHPD Contact:

dataandreports@oshpd.ca.gov

Explore OSHPD Data Topics:

<https://oshpd.ca.gov/data-and-reports/topics/>

I have data I want to request.

<https://oshpd.ca.gov/data-and-reports/request-data/>

I have questions or would like more information on the Healthcare Payments Data Program.

hpd@oshpd.ca.gov

<https://oshpd.ca.gov/data-and-reports/cost-transparency/healthcare-payments/>