



OFFICE OF STATEWIDE HEALTH PLANNING AND DEVELOPMENT
FACILITIES DEVELOPMENT DIVISION

APPLICATION FOR OSHPD PREAPPROVAL
OF MANUFACTURER'S CERTIFICATION (OPM)

OFFICE USE ONLY
APPLICATION #: OPM-0054-13

OSHPD Preapproval of Manufacturer's Certification (OPM)

Type: [] New [X] Renewal [] Update to Pre-CBC 2013 OPA Number:

Manufacturer Information

Manufacturer: Solaire Medical
Manufacturer's Technical Representative: Ali Kanaar
Mailing Address: PO Box 2808, Grand Rapids, MI 49501
Telephone: 888-435-2256 Email: akanaar@solaireportfolio.com

Product Information

Product Name: Evolve Cabinets
Product Type: Stainless steel and particle board base, tall, and upper cabinets
Product Model Number: SES* and SEC*
General Description: Casework rigidly connected to a wall, either in contact with the floor (tall and base cabinets) or elevated (upper cabinets). Cabinets are 18ga stainless steel or 3/4" particle board w/ melamine finish.

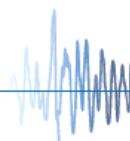
Applicant Information

Applicant Company Name: Solaire Medical
Contact Person: Benjamin Barber
Mailing Address: 1239 Comstock St., Marne, MI 49435
Telephone: 888-435-2256 Email: bbarber@solaireportfolio.com

I hereby agree to reimburse the Office of Statewide Health Planning and Development review fees in accordance with the California Administrative Code, 2016.

Signature of Applicant: [Signature] Date: 4/12/18
Title: [Signature] Company Name: Solaire Medical

"Access to Safe, Quality Healthcare Environments that Meet California's Diverse and Dynamic Needs"





**OFFICE OF STATEWIDE HEALTH PLANNING AND DEVELOPMENT
FACILITIES DEVELOPMENT DIVISION**

Registered Design Professional Preparing Engineering Recommendations

Company Name: Forell/Elsesser Engineers, Inc.

Name: Marco Scanu, SE California License Number: S4454

Mailing Address: 160 Pine Street, 6th Floor, San Francisco, CA 94111

Telephone: (415) 837-0700 Email: m.scanu@forell.com

OSHPD Special Seismic Certification Preapproval (OSP)

- Special Seismic Certification is preapproved under OSP-
(Separate application for OSP is required)
- Special Seismic Certification is not preapproved

Certification Method(s)

- Testing in accordance with: ICC-ES AC156 FM 1950-16
- Other* (Please Specify): _____

*Use of criteria other than those adopted by the California Building Standards Code, 2016 (CBSC 2016) for component supports and attachments are not permitted. For distribution system, interior partition wall, and suspended ceiling seismic bracings, test criteria other than those adopted in the CBSC 2016 may be used when approved by OSHPD prior to testing.

- Analysis
- Experience Data
- Combination of Testing, Analysis, and/or Experience Data (Please Specify): _____

List of Attachments Supporting the Manufacturer's Certification

- Test Report Drawings Calculations Manufacturer's Catalog
- Other(s) (Please Specify): _____

OFFICE USE ONLY – OSHPD APPROVAL VALID FOR CBC 2016 & ALL PRE-2016 CODE BASED PROJECTS

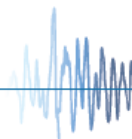
Signature: *Jeffrey Kikumoto* Date: 2/22/2019

Print Name: Jeffrey Kikumoto

Title: SE

Condition of Approval (if applicable): _____

"Access to Safe, Quality Healthcare Environments that Meet California's Diverse and Dynamic Needs"



GENERAL NOTES:

1. THIS OSHPD PREAPPROVAL OF MANUFACTURER'S CERTIFICATION (OPM) IS BASED ON THE 2016 CBC. THE DEMANDS (DESIGN FORCES) FOR USE WITH THIS OPM SHALL BE BASED ON THE 2016 CBC.
2. THIS PREAPPROVAL CONFORMS TO THE 2016 CBC WHERE S_{ds} IS NOT GREATER THAN 2.5.
3. FORCES ARE PER ASCE 7-10 SECTION 13.3.1, EQUATIONS 13.3-1, 13.3-2, & 13.3-3 WHERE $S_{ds} \leq 2.5$, $I_p = 1.5$, $z/h \leq 1.0$, $\alpha_p = 1.0$, & $R_p = 2.5$. COMPONENTS CATEGORIZED AS CABINETS PER ASCE 7-10 TABLE 13.5-1. $\Omega_o = 2.0$ PER SECTION 1616A.1.23 OF THE 2016 CBC.
4. THIS PREAPPROVAL COVERS ONLY ATTACHMENTS AND SUPPORTS OF THE EQUIPMENT TO THE STRUCTURE.
5. ALL DESIGN FORCES SHOWN ON THE DRAWINGS ARE FACTORED LOADS THAT SHALL BE USED FOR STRENGTH DESIGN.
6. RESPONSIBILITIES OF THE SEOR OF THE BUILDING:
 - a. PROVIDE SUPPORTING STRUCTURE TO SUPPORT WEIGHTS AND FORCES SHOWN IN ADDITION TO ALL OTHER LOADS.
 - b. VERIFY INSTALLATION IS IN CONFORMANCE WITH THE 2016 CBC AND WITH THE DETAILS.
 - c. VERIFY THAT PROJECT SPECIFIC VALUES OF S_{ds} & z/h RESULT IN SEISMIC FORCES (E_h & E_v) THAT DO NOT EXCEED THE VALUES ON THE DETAILS.
 - d. VERIFY THAT THE CONCRETE WALL TO WHICH THE EQUIPMENT IS ANCHORED MEETS THE REQUIREMENTS OF THE APPLICABLE ICC-ES ESR, IF APPLICABLE.
 - e. VERIFY THAT THE ANCHORS ARE AT ADEQUATE DISTANCE FROM ANY SLAB EDGES OR OPENINGS (SEE NOTE 7.a, BELOW);
 - f. VERIFY THAT ALL NEW OR EXISTING ANCHORS ARE AN ADEQUATE DISTANCE FROM THE UNIT ATTACHMENTS & CHECK FOR INTERACTION WHERE OTHER ANCHORS ARE WITHIN 18" OR $6h_{ef}$ FROM THIS UNIT'S ANCHORS.
7. EXPANSION ANCHORS:
 - a. ATTACHMENT TO CONCRETE WALLS ARE TO BE MADE WITH THE ANCHORS BELOW AND INSTALLED AS DESCRIBED IN THE CORRESPONDING ICC REPORT.

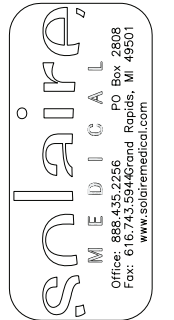
ANCHOR DIAMETER	CONCRETE TYPE	MIN. f'_c (PSI)	ANCHOR TYPE	ICC REPORT NO.	MIN. EMBED	MIN. SPACING	MIN. EDGE DIST.	MIN. CONC. THICKNESS	TORQUE TEST	DIRECT TENSION
5/8"	NORMAL WEIGHT	3000	HILTI KWIK BOLT TZ	ESR-1917	4"	8"	6"	8"	60 ft-lbs	3680 lbs
3/4"	NORMAL WEIGHT	3000	HILTI KWIK BOLT TZ	ESR-1917	4 3/4"	8"	7"	8"	110 ft-lbs	5270 lbs

 - b. THIS PREAPPROVAL ALLOWS FOR A MAXIMUM OF 2 ADJACENT CONCRETE WALL EDGES (i.e. CORNER). SEE TABLE ABOVE FOR MINIMUM ALLOWABLE CONCRETE EDGE DISTANCES.
 - c. TESTING OF POST-INSTALLED ANCHORS PER 2016 CBC, 1910A.5:
TESTING SHALL BE DONE IN THE PRESENCE OF THE SPECIAL INSPECTOR AND A REPORT OF THE TEST RESULTS SHALL BE SUBMITTED TO OSHPD.
 - d. AFTER AT LEAST 24 HOURS HAVE ELAPSED SINCE INSTALLATION, DIRECT PULL TENSION TEST (OR APPLY MANUFACTURER'S RECOMMENDED INSTALLATION TORQUE PER ICC-ES ESR-1917) AT LEAST 50% OF THE ANCHORS.
 - e. ACCEPTANCE CRITERIA:
 1. DIRECT TENSION TEST: THE ANCHOR SHOULD HAVE NO OBSERVABLE MOVEMENT AT THE TEST LOAD.
 2. TORQUE TEST: THE APPLICABLE TORQUE MUST BE ACHIEVED WITHIN THE 1/2 TURN OF THE NUT.
 - f. IF ANY ANCHOR FAILS, TEST ALL ANCHORS.
8. SMS PER ICC-ES ESR-1976.
9. HOLES IN STEEL SHALL BE STD. SIZE HOLES FOR ATTACHMENTS.



FORELL/ELESSESSER
ENGINEERS, INC.
Structural Engineers
140 Park Street, San Francisco, CA, 94111
Tel: (415) 861-0700 Fax: (415) 861-0800
E: EES@forell.com

CONSULTANTS



Office: 888.435.2256 PO Box 2808
Fax: 616.743.5944 Grand Rapids, MI 49501
www.solairemedical.com

PROJECT TITLE

OPM-0054-13
SOLAIRE
EVOLVE
CABINETS
SUPPORTS &
ATTACHMENTS

SHEET TITLE

GENERAL
NOTES

SHEET NO.

S0.01

Sheet 0 of 12 sheets.

EVOLVE STAINLESS STEEL CABINETS

TALL CABINETS, STAINLESS STEEL

Solid Doors	Glass Doors	Depth	Width	Height	Empty Weight	Full Weight	C _u T _u	C _u V _u
	SES19275GLW SES19275GRW	19.25 in	26.75 in	48.0 in	291 lbs	763 lbs	829 lbs	458 lbs
	SES19275GLB SES19275GRB	19.25 in	26.75 in	60.0 in	291 lbs	881 lbs	957 lbs	529 lbs
SES192775LNC SES192775RNC	SES192775GLNC, SES192775GRNC SES192775GL** (AP, BC, CC, DS) SES192775GR** (AP, BC, CC, DS)	19.25 in	26.75 in	84.0 in	291 lbs	1117 lbs	1213 lbs	670 lbs
SES193675SNC	SES193675GNC SES193675G** (BC, CC, DS)	19.25 in	36.0 in	84.0 in	387 lbs	1499 lbs	1135 lbs	899 lbs
SES194075LNC SES194075RNC	SES194075GLNC SES194075GRNC	19.25 in	40.0 in	84.0 in	387 lbs	1622 lbs	1190 lbs	973 lbs
SES271975LNC SES271975RNC	SES271975GLNC, SES271975GRNC SES271975GL** (AP, BC, CC, DS) SES271975GR** (AP, BC, CC, DS)	27.25 in	18.75 in	84.0 in	387 lbs	1207 lbs	2052 lbs	724 lbs
SES273675SNC	SES273675GNC SES273675G** (AP, BC, CC, DS, NC, SC)	27.25 in	36.0 in	84.0 in	439 lbs	1993 lbs	1840 lbs	1196 lbs
SES19275SL5, SES19275SR5 SES19275SLD, SES19275SRD	SES192755GL5, SES192755GR5 SES192755GLD, SES192755GRD	19.25 in	26.75 in	92.0 in	244 lbs	1149 lbs	1247 lbs	689 lbs
SES19275SLT, SES19275SRT	SES192755GLT, SES192755GRT	19.25 in	26.75 in	92.0 in	244 lbs	1149 lbs	1247 lbs	689 lbs
SES193655S, SES193655D	SES193655G5S, SES193655G5D SES193655P5T, SES193655P5D	19.25 in	36.0 in	92.0 in	334 lbs	1552 lbs	1175 lbs	931 lbs
SES194055S, SES194055D	SES194055G5S, SES194055G5D SES194055P5T, SES194055P5D	19.25 in	40.0 in	92.0 in	359 lbs	1712 lbs	1255 lbs	1027 lbs

- Notes: 1. T_u, V_u apply at each expansion anchor and include C_u.
 2. Weights shown are for heaviest product in each available size.
 3. The center of gravity weight is a maximum. This preapproval encompasses all weights up to the maximum weight shown.
 4. Equipment manufacturer must design unit to make center of gravity height less than the center of gravity height shown.

CABINET SPECIFICATIONS

ASTM A240 304 STAINLESS STEEL
 18 GA PANELS
 14 GA FRAME
 F_y = 30 Ksi

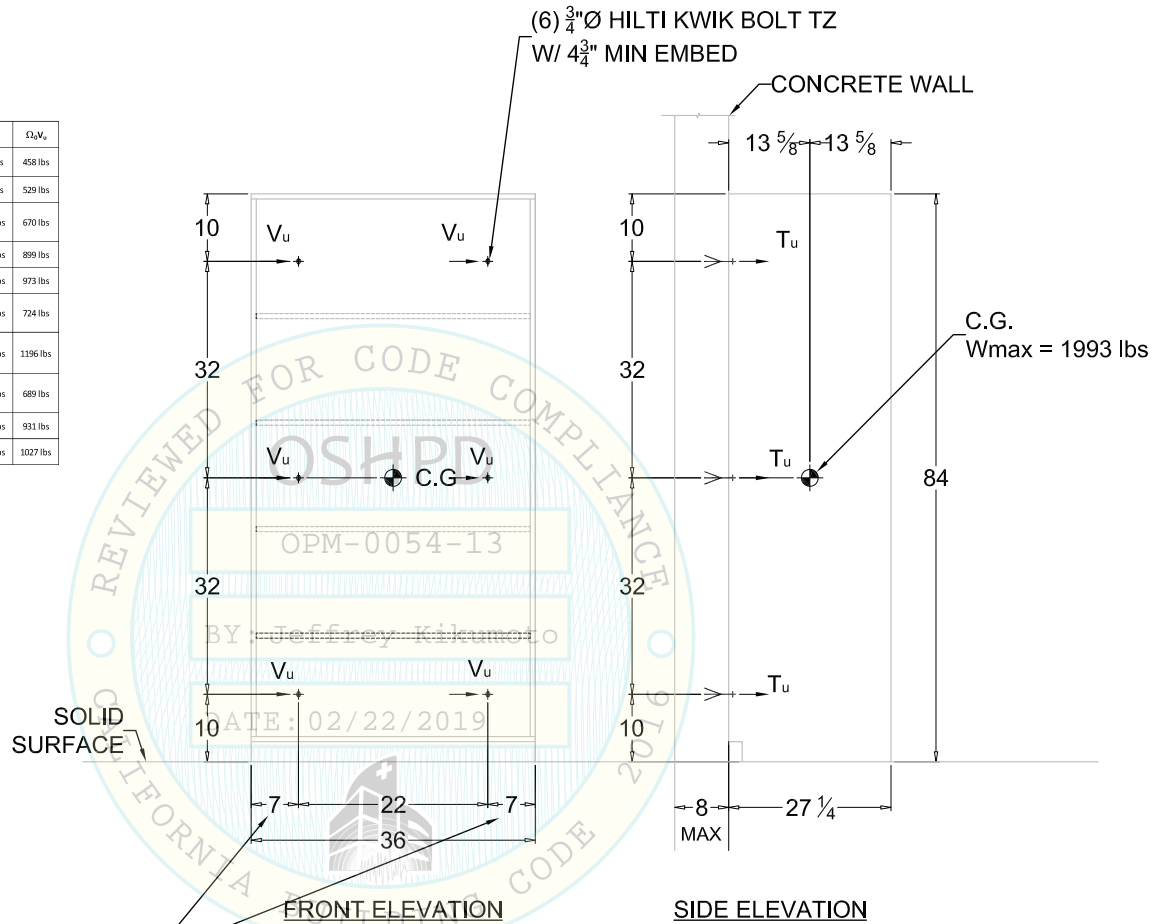
SUBSTRATE REQUIREMENTS

8" CONCRETE WALL, 3000 PSI NORMAL WEIGHT
 SEE S0.01 FOR SPACING & EDGE DISTANCE REQUIREMENTS
 FLOOR: MIN. 3.25" LWC OR 3" NWC SLAB
 f_c = 3,000 PSI MIN.

PARAMETERS

S_{DS} ≤ 2.5
 a_p = 1.0; R_p = 2.5
 I_p = 1.5
 z/h ≤ 1.0
 Ω₀ = 2.0 (APPLICABLE WHERE ATTACHMENT TO CONCRETE OCCURS)

FOR CABINETS WITH WIDTHS EQUAL TO 18.75" THIS DIMENSION IS 4"



NOTE: INFO FOR MODEL SHOWN HERE IS THE 27.25" DEEP X 36" WIDE X 84" HIGH UNIT.



SOLAIRE MEDICAL
 CERTIFIES THIS DOCUMENT
 AS AN OUTLINE DRAWING
 SIGNATURE: *Benjamin Riker*
 PRINT NAME: Benjamin Riker
 TITLE: GM
 DATE: 12/21/18

EVOLVE
 MATERIAL: **STAINLESS**
 DESCRIPTION: **TALL**
 1 OF 12

Solaire
 MEDICAL
 PO Box 2808
 Grand Rapids, MI 49501
 Office: 888.435.2256
 Fax: 616.743.5944
 www.solairemedical.com

EVOLVE STAINLESS STEEL CABINETS

TALL CABINETS, STAINLESS STEEL

Solid Doors	Glass Doors	Depth	Width	Height	Empty Weight	Full Weight	T _u	V _u
-	SES19275GLW SES19275GRW	19.25 in	26.75 in	48.0 in	291 lbs	763 lbs	414 lbs	229 lbs
-	SES19275GLB SES19275GRB	19.25 in	26.75 in	60.0 in	291 lbs	881 lbs	478 lbs	264 lbs
SES19277SLNC SES19277SRNC	SES19277GLNC, SES19277GRNC SES19277GL** (AP, BC, CC, DS) SES19277GR** (AP, BC, CC, DS)	19.25 in	26.75 in	84.0 in	291 lbs	1117 lbs	606 lbs	335 lbs
SES19367SLNC SES19367SRNC	SES19367GLNC SES19367GL** (BC, CC, DS)	19.25 in	36.0 in	84.0 in	387 lbs	1499 lbs	568 lbs	450 lbs
SES19407SLC SES19407SRC	SES19407GLC SES19407GRC	19.25 in	40.0 in	84.0 in	387 lbs	1622 lbs	595 lbs	487 lbs
SES27197SLNC SES27197SRNC	SES27197GLNC, SES27197GRNC SES27197GL** (AP, BC, CC, DS) SES27197GR** (AP, BC, CC, DS)	27.25 in	18.75 in	84.0 in	387 lbs	1207 lbs	1026 lbs	362 lbs
SES27367SLNC SES27367SRNC	SES27367GLC SES27367GL** (AP, BC, CC, DS, NC, SC)	27.25 in	36.0 in	84.0 in	419 lbs	1993 lbs	920 lbs	598 lbs
SES19275SLD, SES19275SRD SES19275SLT, SES19275SRT	SES19275GLD, SES19275GRD SES19275GLT, SES19275GRT	19.25 in	26.75 in	92.0 in	244 lbs	1149 lbs	624 lbs	345 lbs
SES19365SS, SES19365SD SES19365ST	SES19365GSD, SES19365GDT SES19365GLT, SES19365GRT	19.25 in	36.0 in	92.0 in	334 lbs	1552 lbs	588 lbs	465 lbs
SES19405SS SES19405SD	SES19405GSD, SES19405GDT SES19405GLT, SES19405GRT	19.25 in	40.0 in	92.0 in	359 lbs	1712 lbs	628 lbs	514 lbs

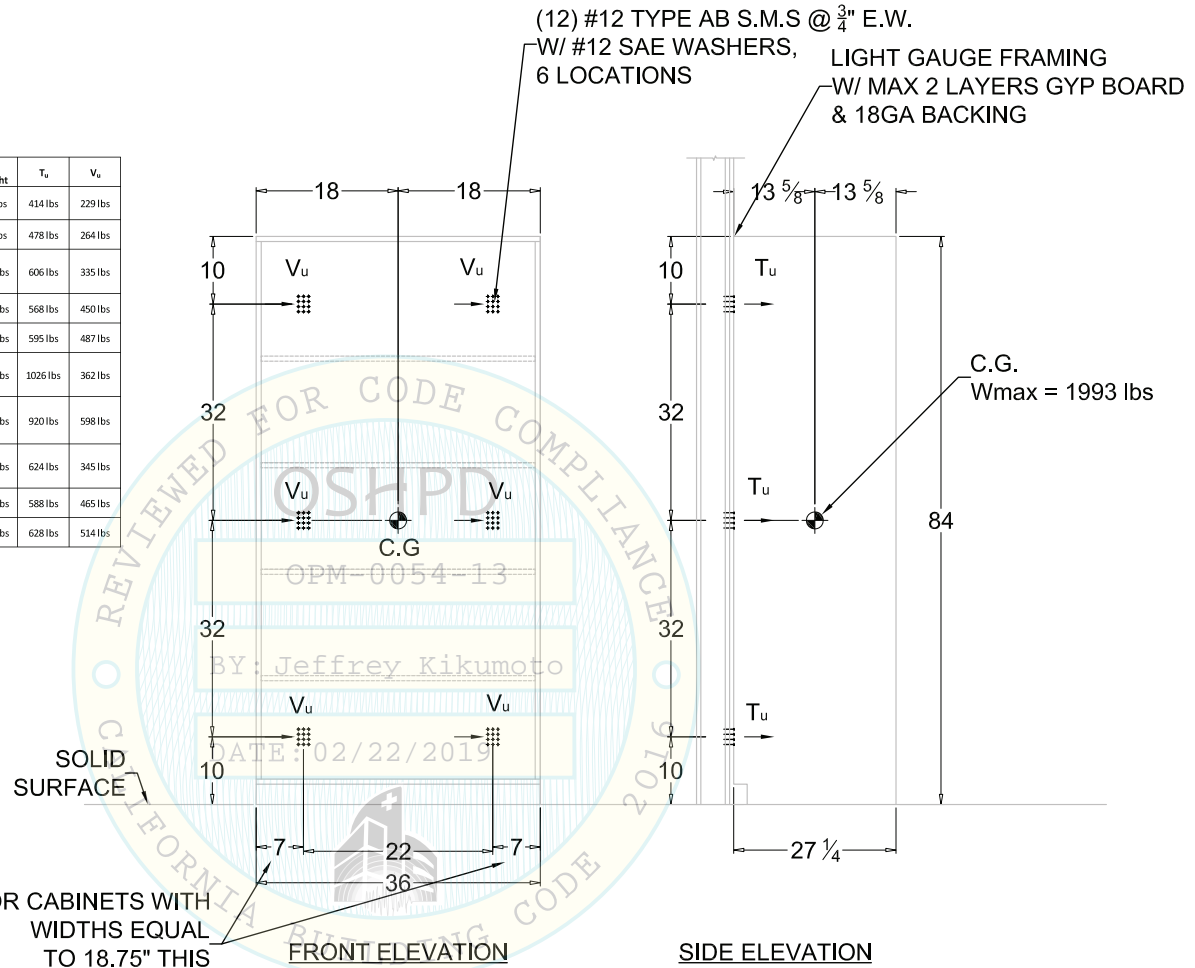
- Notes: 1. Tu, Vu, apply at each expansion anchor and include E_u.
 2. Weights shown are for heaviest product in each available size.
 3. The center of gravity weight is a maximum. This preapproval encompasses all weights up to the maximum weight shown.
 4. Equipment manufacturer must design unit to make center of gravity height less than the center of gravity height shown.

CABINET SPECIFICATIONS
 ASTM A240 304 STAINLESS STEEL
 18 GA PANELS
 14 GA FRAME
 F_y = 30 Ksi

SUBSTRATE REQUIREMENTS
 LIGHT GAUGE FRAMING W/ 18 GA BACKING
 w/ MIN. 1/2" EDGE DISTANCE FOR ATTACHMENTS.
 ATSM A653, GRADE 33 MIN.
 FLOOR: MIN. 3.25" LWC OR 3" NWC SLAB
 f'c = 3,000 PSI MIN.

PARAMETERS

S_{DS} ≤ 2.5
 a_p = 1.0; R_p = 2.5
 I_p = 1.5
 z/h ≤ 1.0



FOR CABINETS WITH WIDTHS EQUAL TO 18.75" THIS DIMENSION IS 4"

NOTE:
 DIMENSIONS ARE TO CENTER OF SCREW GROUPS. INFO FOR MODEL SHOWN HERE IS THE 27.25" DEEP X 36" WIDE X 84" HIGH UNIT.

SOLAIRE MEDICAL
 CERTIFIES THIS DOCUMENT
 AS AN OUTLINE DRAWING
 SIGNATURE: *Benjamin Riker*
 PRINT NAME: Benjamin Riker
 TITLE: G.M.
 DATE: 12/21/18



EVOLVE
 MATERIAL: **STAINLESS**
 SERIES: **EVOLVE**
 DESCRIPTION: **TALL**
 2 OF 12

Solaire
 MEDICAL
 PO Box 2808
 Grand Rapids, MI 49501
 Office: 688.435.2256
 Fax: 616.743.5944
 www.solairemedical.com

EVOLVE PARTICLE BOARD TALL CABINETS

TALL CABINETS, PARTICLEBOARD

Solid Doors	Glass Doors	Roll-Top Doors	Depth	Width	Height	Empty Weight	Full Weight	$\Omega_s T_u$	$\Omega_s V_u$
-	SEC1927GLW SEC1927GRW SEC1927GLB SEC1927GRB	SEC1927SRW	19.25 in	26.75 in	48.0 in	114 lbs	586 lbs	636 lbs	352 lbs
SEC1927TSLNC SEC1927TSRNC	SEC1927TGLC SEC1927TGL** (AP, BC, CC, DS) SEC1927TGR** (AP, BC, CC, DS)	SEC1927TRNC SEC1927TRT** (AP, BC, CC, DS)	19.25 in	26.75 in	84.0 in	244 lbs	1070 lbs	1162 lbs	642 lbs
SEC1936TANC SEC1936TANC	SEC1936TGLC SEC1936TGL** (AP, BC, CC, DS) SEC1936TGR** (AP, BC, CC, DS)	SEC1936TRNC SEC1936TRT** (AP, BC, CC, DS)	19.25 in	36.0 in	84.0 in	295 lbs	1407 lbs	1066 lbs	844 lbs
SEC2719TSLNC SEC2719TSRNC	SEC2719TGLC SEC2719TGL** (AP, BC, CC, DS) SEC2719TGR** (AP, BC, CC, DS)	SEC2719TRNC SEC2719TRT** (AP, BC, CC, DS)	27.25 in	18.75 in	84.0 in	252 lbs	1072 lbs	1823 lbs	643 lbs
SEC2736TSC SEC2736TSC SEC2736TSC	SEC2736TGC SEC2736TGC** (AP, BC, CC, DS, NC, SC)	SEC2736TRC SEC2736TRT** (AP, BC, CC, DS, NC, SC)	27.25 in	36.0 in	84.0 in	389 lbs	1963 lbs	1812 lbs	1178 lbs
SEC1927SLS SEC1927SLS SEC1927SLS SEC1927SLS SEC1927SLS	SEC1927SGLS SEC1927SGLD SEC1927SGRD SEC1927SGLT SEC1927SGRT	SEC1927SRTS SEC1927SRTD SEC1927SRTT	19.25 in	26.75 in	92.0 in	198 lbs	1103 lbs	1197 lbs	662 lbs
SEC1936SS SEC1936SS SEC1936SS	SEC1936GS SEC1936GD SEC1936GR	SEC1936RTS SEC1936RTD SEC1936RTT	19.25 in	36.0 in	92.0 in	271 lbs	1489 lbs	1126 lbs	893 lbs
SEC1940TSC SEC1940TSC	SEC1940TGC SEC1940TGC	-	19.25 in	40.0 in	84.0 in	291 lbs	1526 lbs	1119 lbs	916 lbs
SEC1940SS SEC1940SS	SEC1940GS SEC1940GD	-	19.25 in	40.0 in	92.0 in	291 lbs	1644 lbs	1205 lbs	986 lbs

Notes: 1. The V_u apply at each expansion anchor and include D_s .
2. Weights shown are for heaviest product in each available size.
3. The center of gravity weight is a maximum. This paragraph encompasses all weights up to the maximum weight shown.
4. Equipment manufacturer: must design unit to make center of gravity height less than the center of gravity height shown.

CABINET SPECIFICATIONS

$\frac{3}{4}$ " TAFISA TAFIPAN M-2 (ANSI A208.1)
PARTICLE BOARD PANELS

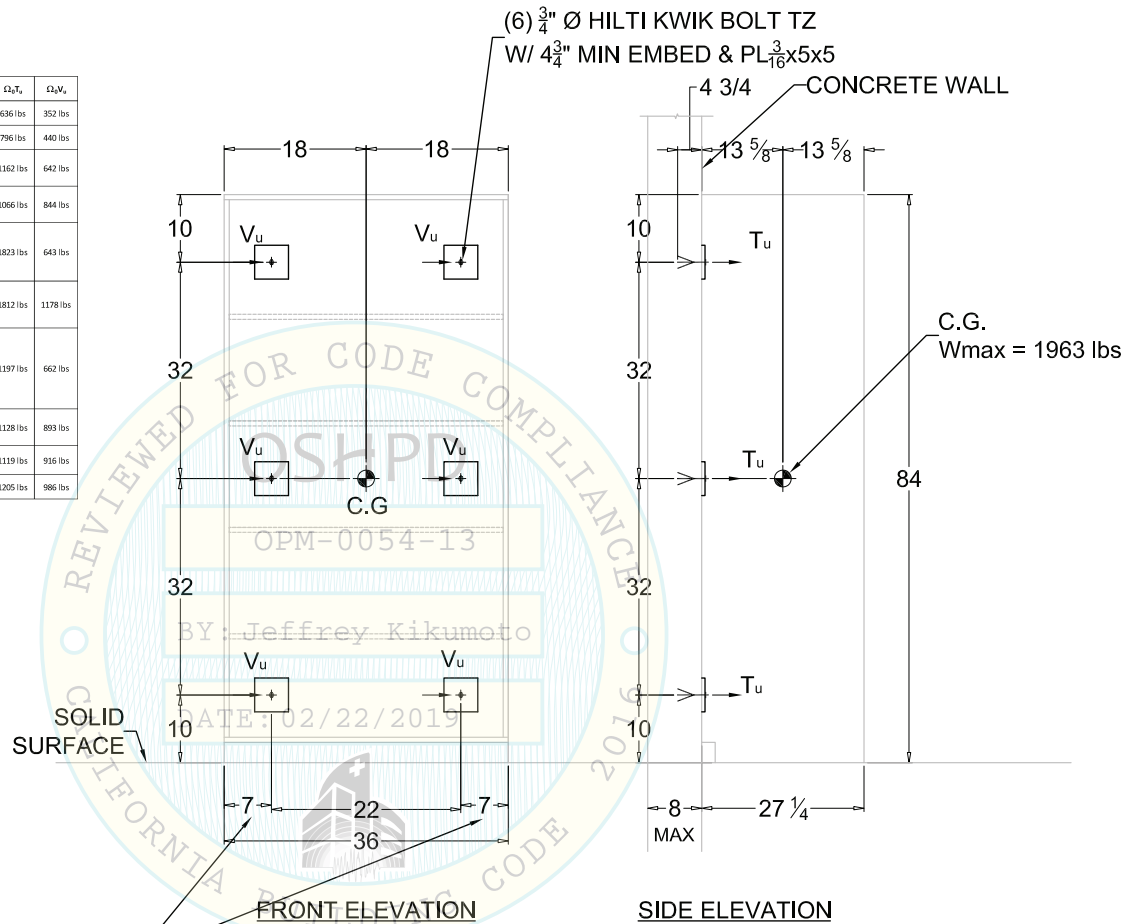
SUBSTRATE REQUIREMENTS

8" CONCRETE WALL, 3000 PSI NORMAL WEIGHT
SEE S0.01 FOR SPACING & EDGE DISTANCE REQUIREMENTS
FLOOR: MIN. 3.25" LWC OR 3" NWC SLAB
 $f'c = 3,000$ PSI MIN.

PARAMETERS

$S_{Ds} \leq 2.5$
 $a_p = 1.0$; $R_p = 2.5$
 $I_p = 1.5$
 $z/h \leq 1.0$
 $\Omega_0 = 2.0$ (APPLICABLE WHERE ATTACHMENT TO CONCRETE OCCURS)

FOR CABINETS WITH WIDTHS EQUAL TO 18.75" THIS DIMENSION IS 4"



NOTE: INFO FOR MODEL SHOWN HERE IS THE 27.25" DEEP X 36" WIDE X 84" HIGH UNIT.



SOLAIRE MEDICAL CERTIFIES THIS DOCUMENT AS AN OUTLINE DRAWING
SIGNATURE: *Benjamin Baker*
PRINT NAME: Benjamin Baker
TITLE: GM
DATE: 12/21/18

SERIES: EVOLVE
 DESCRIPTION: TALL
 MATERIAL: MELAMINE
 3 OF 12

SOLAIRE MEDICAL
 PO Box 2808
 Grand Rapids, MI 49501
 Office: 888.435.2256
 Fax: 616.743.5944
 www.solairemedical.com

EVOLVE PARTICLE BOARD TALL CABINETS

TALL CABINETS, PARTICLEBOARD

Solid Doors	Glass Doors	Roll-Top Doors	Depth	Width	Height	Empty Weight	Full Weight	T _e	V _e
-	SEC19275GLW SEC19275GRW SEC19275GLB SEC19275GRB	SEC19275RTRW SEC19275RTTB SEC19275RTTB	19.25 in	26.75 in	48.0 in	134 lbs	586 lbs	318 lbs	176 lbs
SEC19275SLNC SEC19275SRNC	SEC19275GLNC SEC19275GL** (AP, BC, CC, DS) SEC19275GR** (AP, BC, CC, DS)	SEC19275TRTNC SEC19275TRT** (AP, BC, CC, DS) SEC1936TRTNC SEC1936TRT** (BC, CC, DS)	19.25 in	26.75 in	84.0 in	244 lbs	1070 lbs	581 lbs	321 lbs
SEC1936TSNC	SEC1936TGN SEC1936TG** (BC, CC, DS)	SEC1936TRTNC SEC1936TRT** (BC, CC, DS)	19.25 in	36.0 in	84.0 in	295 lbs	1407 lbs	533 lbs	422 lbs
SEC2719TSLNC SEC2719TSRNC	SEC2719TGLNC SEC2719TGL** (AP, BC, CC, DS) SEC2719TGR** (AP, BC, CC, DS)	SEC2719TRTNC SEC2719TRT** (AP, BC, CC, DS)	27.25 in	18.75 in	84.0 in	252 lbs	1072 lbs	911 lbs	321 lbs
SEC2736TSC SEC2736TSNC SEC2736TSSC	SEC2736TGC SEC2736TG** (AP, BC, CC, DS, NC, SC)	SEC2736TRTC SEC2736TRT** (AP, BC, CC, DS, NC, SC)	27.25 in	36.0 in	84.0 in	389 lbs	1963 lbs	906 lbs	589 lbs
SEC19275SLS SEC19275SRS SEC19275SLD SEC19275SRD SEC19275PSLT SEC19275PRT	SEC19275GLS SEC19275GRS SEC19275GLD SEC19275GRD SEC19275PGLT SEC19275PGR	SEC19275SRTS SEC19275SRD SEC19275PRTT	19.25 in	26.75 in	92.0 in	198 lbs	1103 lbs	599 lbs	331 lbs
SEC1936SSS SEC1936SSD SEC1936SST	SEC1936GSS SEC1936GSD SEC1936GST	SEC1936SRTS SEC1936SRD SEC1936PRTT	19.25 in	36.0 in	92.0 in	271	1489 lbs	564 lbs	447 lbs
SEC1940TSLC SEC1940TSRC	SEC1940TGRC SEC1940TGLC	-	19.25 in	40.0 in	84.0 in	291	1526 lbs	560 lbs	458 lbs
SEC1940SSS SEC1940SSD	SEC1940GSS SEC1940GSD	-	19.25 in	40.0 in	92.0 in	291	1644 lbs	603 lbs	493 lbs

Notes: 1. Tu, Vu, apply at each expansion anchor and include C_g.
2. Weights shown are for heaviest product in each available size.
3. The center of gravity weight is a maximum. This gross weight encompasses all weights up to the maximum weight shown.
4. Equipment manufacturer must design unit to make center of gravity height less than the center of gravity height shown.

CABINET SPECIFICATIONS

$\frac{3}{4}$ " TAFISA TAFIPAN M-2 (ANSI A208.1)
PARTICLE BOARD PANELS

SUBSTRATE REQUIREMENTS

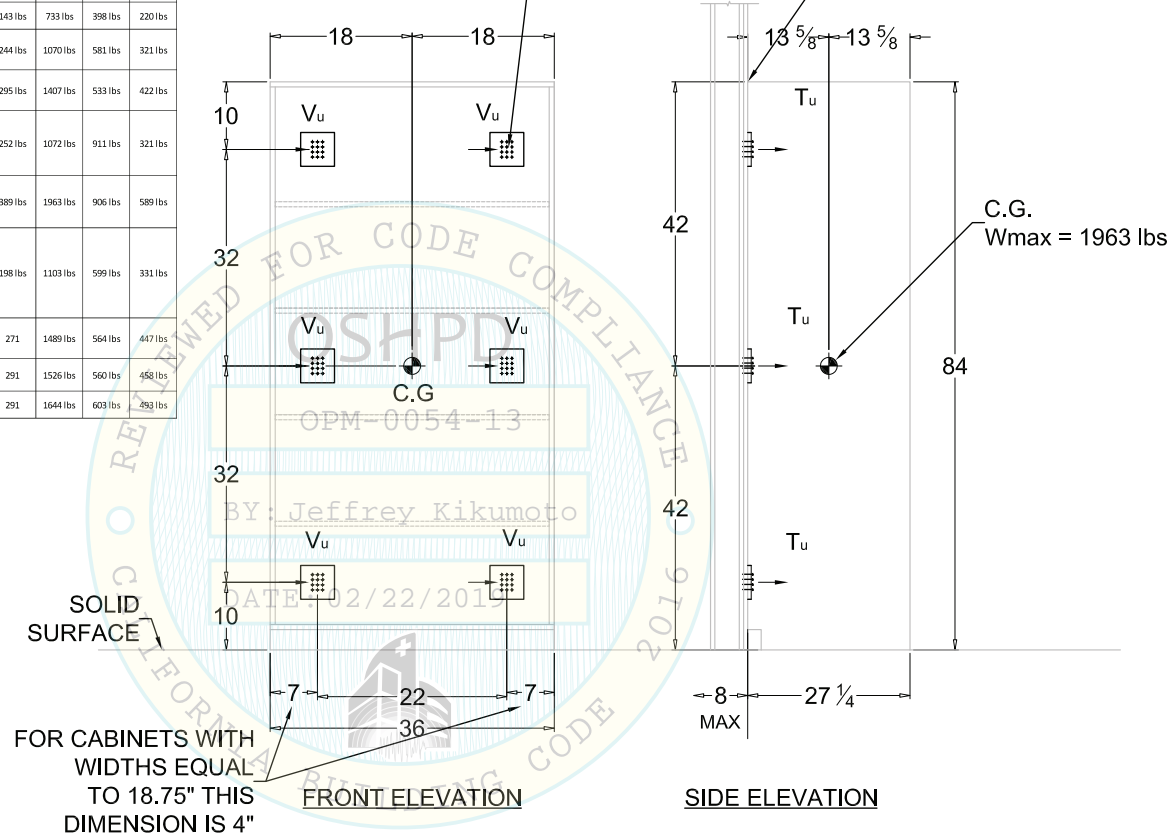
LIGHT GAUGE FRAMING W/ 18 GA BACKING
W/ MIN. $\frac{1}{2}$ " EDGE DISTANCE FOR ATTACHMENTS.
ATSM A653, GRADE 33 MIN.
FLOOR: MIN. 3.25" LWC OR 3" NWC SLAB
f'c = 3,000 PSI MIN.

PARAMETERS

S_{DS} ≤ 2.5
a_p = 1.0; R_p = 2.5
I_p = 1.5
z/h ≤ 1.0

(12) #12 TYPE AB S.M.S @ $\frac{3}{4}$ " E.W. w/ #12 SAE WASHERS
IN PL $\frac{3}{16}$ "x5x5,
6 LOCATIONS

LIGHT GAUGE FRAMING
W/ MAX 2 LAYERS GYP BOARD
& 18GA BACKING



NOTE:
DIMENSIONS ARE TO CENTER OF SCREW GROUPS. INFO FOR MODEL SHOWN HERE IS THE 27.25" DEEP X 36" WIDE X 84" HIGH UNIT.

SOLAIRE MEDICAL
CERTIFIES THIS DOCUMENT
AS AN OUTLINE DRAWING
SIGNATURE: *Benjamin Baker*
PRINT NAME: Benjamin Baker
TITLE: GM
DATE: 12/21/18



SERIES: EVOLVE
 DESCRIPTION: MELAMINE
 MATERIAL: MELAMINE
 TALL 4 OF 12

SOLAIRE
 MEDICAL
 PO Box 2808
 Grand Rapids, MI 49501
 Office: 888.435.2256
 Fax: 616.743.5944
 www.solairemedical.com

EVOLVE STAINLESS STEEL CABINETS

UPPER CABINETS, STAINLESS STEEL

Solid Doors	Glass Doors	Depth	Width	Height	Empty Weight	Full Weight	$\Omega_u T_u$	$\Omega_u V_u$
SES1319USL SES1319USR	SES1319UGL SES1319UGR	13.0 in	18.75 in	30.0 in	88 lbs	228 lbs	636 lbs	282 lbs
SES1327USL SES1327USR	SES1327UGL SES1327UGR	13.0 in	26.75 in	30.0 in	110 lbs	309 lbs	596 lbs	383 lbs
SES1336US SES1336US	SES1336UG SES1336UG	13.0 in	36.0 in	30.0 in	138 lbs	406 lbs	745 lbs	503 lbs

- Notes: 1. T_u, V_u apply at each expansion anchor and include Ω_u .
 2. Weights shown are for heaviest product in each available size.
 3. The center of gravity weight is a maximum. This preapproval encompasses all weights up to the maximum weight shown.
 4. Equipment manufacturer must design unit to make center of gravity height less than the center of gravity height shown.

CABINET SPECIFICATIONS

ASTM A240 304 STAINLESS STEEL

18 GA PANELS

14 GA FRAME

$F_y = 30$ Ksi

SUBSTRATE REQUIREMENTS

8" CONCRETE WALL, 3000 PSI NORMAL WEIGHT

PARAMETERS

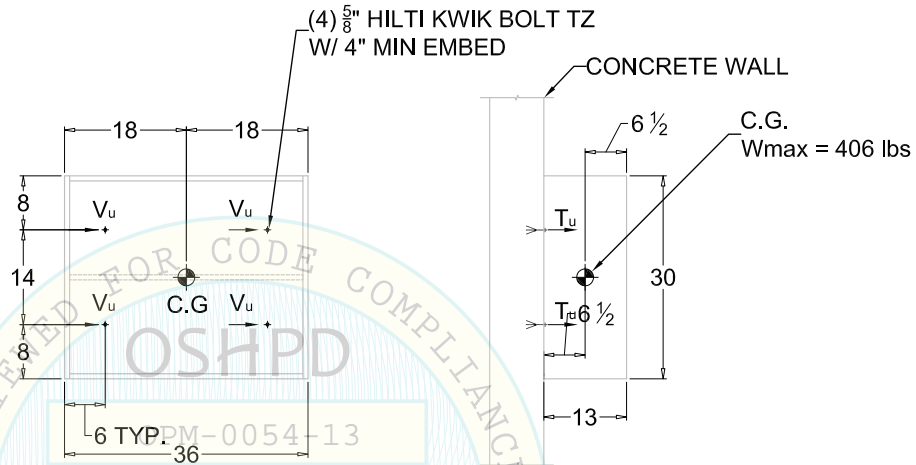
$S_{DS} \leq 2.5$

$a_p = 1.0; R_p = 2.5$

$I_p = 1.5$

$z/h \leq 1.0$

$\Omega_0 = 2.0$ (APPLICABLE WHERE ATTACHMENT TO CONCRETE OCCURS)

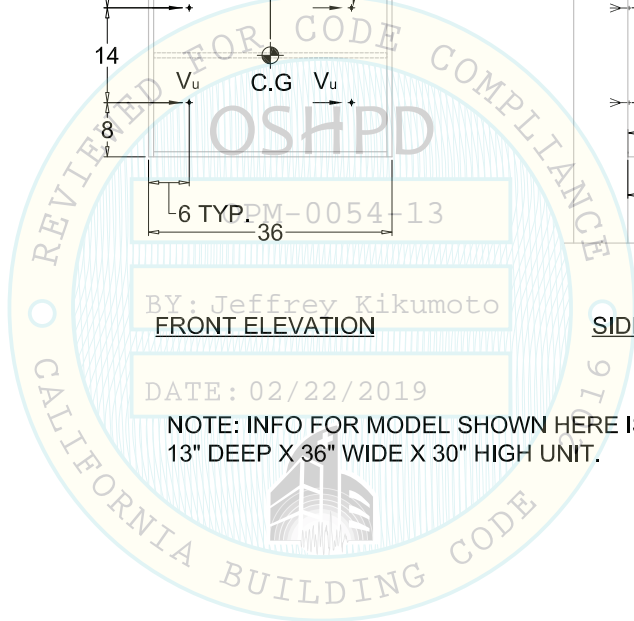


BY: Jeffrey Kikumoto
 FRONT ELEVATION

SIDE ELEVATION

DATE: 02/22/2019

NOTE: INFO FOR MODEL SHOWN HERE IS THE 13" DEEP X 36" WIDE X 30" HIGH UNIT.



SOLAIRE MEDICAL
 CERTIFIES THIS DOCUMENT
 AS AN OUTLINE DRAWING
 SIGNATURE: *Benjamin Riker*
 PRINT NAME: Benjamin Riker
 TITLE: GM
 DATE: 12/21/18

MATERIAL: STAINLESS

SERIES: EVOLVE DESCRIPTION:

5 OF 12

UPPER

Solaire MEDICAL

Office: 888.435.2256
 Fax: 616.743.5944
 PO Box 2808
 Grand Rapids, MI 49501
 www.solairemedical.com

EVOLVE STAINLESS STEEL CABINETS

UPPER CABINETS, STAINLESS STEEL

Solid Doors	Glass Doors	Depth	Width	Height	Empty Weight	Full Weight	T _u	V _u
SES1319USL SES1319USR	SES1319UGL SES1319UGR	13.0 in	18.75 in	30.0 in	88 lbs	228 lbs	318 lbs	141 lbs
SES1327USL SES1327USR	SES1327UGL SES1327UGR	13.0 in	26.75 in	30.0 in	110 lbs	309 lbs	298 lbs	191 lbs
SES1336US	SES1336UG	13.0 in	36.0 in	30.0 in	138 lbs	406 lbs	373 lbs	251 lbs

- Notes: 1. T_u, V_u, apply at each expansion anchor and include Q_u.
 2. Weights shown are for heaviest product in each available size.
 3. The center of gravity weight is a maximum. This preapproval encompasses all weights up to the maximum weight shown.
 4. Equipment manufacturer must design unit to make center of gravity height less than the center of gravity height shown.

CABINET SPECIFICATIONS

ASTM A240 304 STAINLESS STEEL
 18 GA PANELS
 14 GA FRAME
 F_y = 30 Ksi

SUBSTRATE REQUIREMENTS

LIGHT GAUGE FRAMING W/ 18 GA BACKING w/
 MIN. 1/2" EDGE DISTANCE FOR ATTACHMENTS.
 ATSM A653, GRADE 33 MIN.

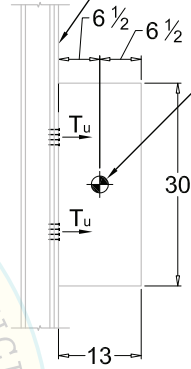
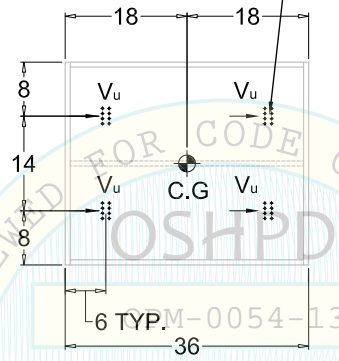
PARAMETERS

S_{DS} <= 2.5
 a_p = 1.0; R_p = 2.5
 I_p = 1.5
 z/h <= 1.0

(8) #12 TYPE AB S.M.S. @ 3/4" E.W.
 W/ #12 SAE WASHERS,
 4 LOCATIONS

LIGHT GAUGE FRAMING
 W/ MAX 2 LAYERS GYP BOARD
 2 18GA BACKING

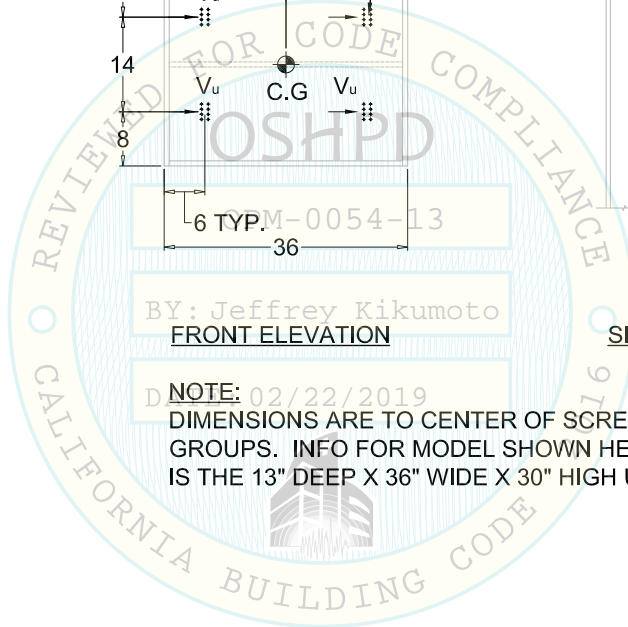
C.G.
 W_{max} = 406 lbs



BY: Jeffrey Kikumoto
 FRONT ELEVATION

SIDE ELEVATION

NOTE: 02/22/2019
 DIMENSIONS ARE TO CENTER OF SCREW
 GROUPS. INFO FOR MODEL SHOWN HERE
 IS THE 13" DEEP X 36" WIDE X 30" HIGH UNIT.



SOLAIRE MEDICAL
 CERTIFIES THIS DOCUMENT
 AS AN OUTLINE DRAWING
 SIGNATURE: *Benjamin Rucker*
 PRINT NAME: Benjamin Rucker
 TITLE: GM
 DATE: 12/21/18

SERIES: EVOLVE MATERIAL: STAINLESS
 DESCRIPTION: UPPER 6 OF 12

Solaire
 MEDICAL
 Office: 888.435.2256
 Fax: 616.743.5944
 PO Box 2808
 Grand Rapids, MI 49501
 www.solairmedical.com

EVOLVE PARTICLE BOARD UPPER CABINETS

UPPER CABINETS, PARTICLEBOARD								
Solid Doors	Glass Doors	Depth	Width	Height	Empty Weight	Full Weight	$\Omega_0 T_u$	$\Omega_0 V_u$
SEC1319USL	SEC1319UGL	13.0 in	18.75 in	30.0 in	68 lbs	208 lbs	580 lbs	257 lbs
SEC1319USR	SEC1319UGR							
SEC1327USL	SEC1327UGL	13.0 in	26.75 in	30.0 in	90 lbs	289 lbs	557 lbs	358 lbs
SEC1327USR	SEC1327UGR							
SEC1336US	SEC1336UG	13.0 in	36.0 in	30.0 in	115 lbs	383 lbs	703 lbs	474 lbs

Notes: 1. T_u , V_u , apply at each expansion anchor and include Ω_0 .
 2. Weights shown are for heaviest product in each available size.
 3. The center of gravity weight is a maximum. This preapproval encompasses all weights up to the maximum weight shown.
 4. Equipment manufacturer must design unit to make center of gravity height less than the center of gravity height shown.

CABINET SPECIFICATIONS

$\frac{3}{4}$ " TAFISA TAFIPAN M-2 (ANSI A208.1)
 PARTICLE BOARD PANELS

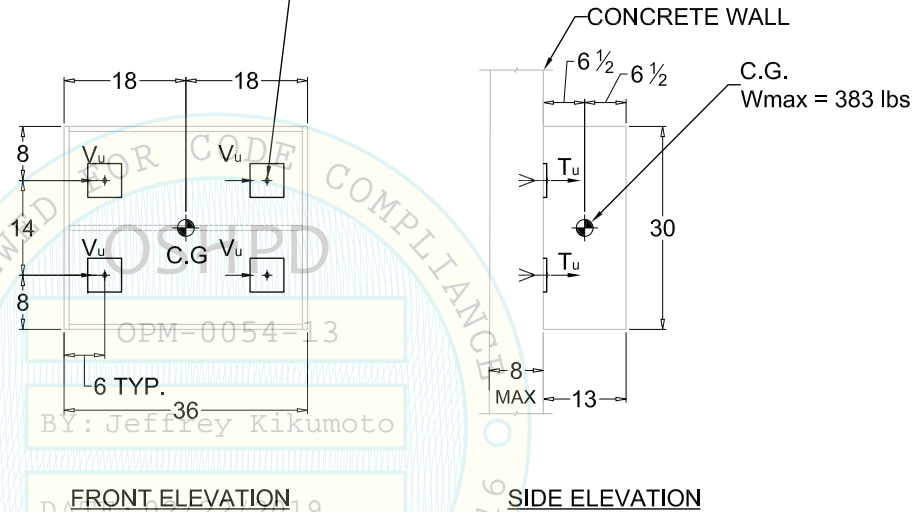
SUBSTRATE REQUIREMENTS

8" CONCRETE WALL, 3000 PSI NORMAL WEIGHT

PARAMETERS

$S_{Ds} \leq 2.5$
 $a_p = 1.0$; $R_p = 2.5$
 $I_p = 1.5$
 $z/h \leq 1.0$
 $\Omega_0 = 2.0$ (APPLICABLE WHERE ATTACHMENT TO CONCRETE OCCURS)

(4) $\frac{5}{8}$ " \emptyset HILTI KWIK BOLT TZ
 W/ 4" MIN EMBED
 @ PL $\frac{3}{16}$ " x 5x5



NOTE: INFO FOR MODEL SHOWN HERE IS THE 13" DEEP X 36" WIDE X 30" HIGH UNIT.



SOLAIRE MEDICAL
 CERTIFIES THIS DOCUMENT
 AS AN OUTLINE DRAWING
 SIGNATURE: *Benjamin R. Baker*
 PRINT NAME: Benjamin R. Baker
 TITLE: G.M.
 DATE: 12/21/18

SERIES: EVOLVE
 DESCRIPTION: MELAMINE
 MATERIAL: MELAMINE
 UPPER 7 OF 12

Solaire
 MEDICAL
 PO Box 2808
 Grand Rapids, MI 49501
 Office: 888.435.2256
 Fax: 616.743.5944
 www.solairmedical.com

EVOLVE PARTICLE BOARD UPPER CABINETS

UPPER CABINETS, PARTICLEBOARD

Solid Doors	Glass Doors	Depth	Width	Height	Empty Weight	Full Weight	T _u	V _u
SEC1319USL	SEC1319UGL	13.0 in	18.75 in	30.0 in	68 lbs	208 lbs	290 lbs	129 lbs
SEC1319USR	SEC1319UGR	13.0 in	18.75 in	30.0 in	68 lbs	208 lbs	290 lbs	129 lbs
SEC1327USL	SEC1327UGL	13.0 in	26.75 in	30.0 in	90 lbs	289 lbs	279 lbs	179 lbs
SEC1327USR	SEC1327UGR	13.0 in	26.75 in	30.0 in	90 lbs	289 lbs	279 lbs	179 lbs
SEC1336US	SEC1336UG	13.0 in	36.0 in	30.0 in	115 lbs	383 lbs	352 lbs	237 lbs

- Notes: 1. T_u, V_u, apply at each expansion anchor and include Ω_u.
 2. Weights shown are for heaviest product in each available size.
 3. The center of gravity weight is a maximum. This preapproval encompasses all weights up to the maximum weight shown.
 4. Equipment manufacturer must design unit to make center of gravity height less than the center of gravity height shown.

CABINET SPECIFICATIONS

$\frac{3}{4}$ " TAFISA TAFIPAN M-2 (ANSI A208.1)
 PARTICLE BOARD PANELS

SUBSTRATE REQUIREMENTS

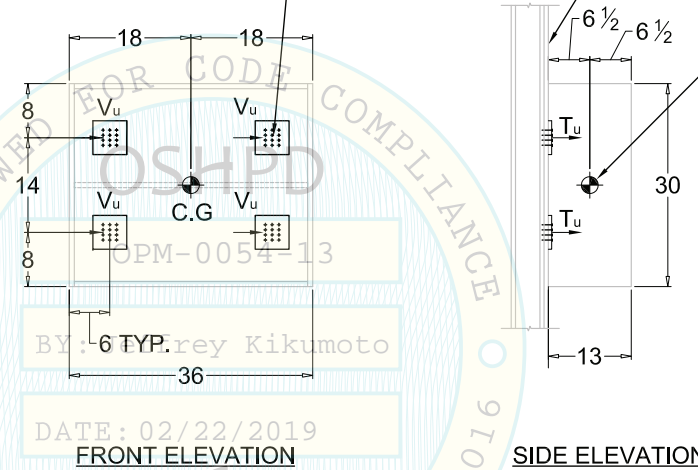
LIGHT GAUGE FRAMING W/ 18 GA BACKING W/
 MIN. $\frac{1}{2}$ " EDGE DISTANCE FOR ATTACHMENTS.
 ATSM A653, GRADE 33 MIN.

PARAMETERS

S_{ds} ≤ 2.5
 a_p = 1.0; R_p = 2.5
 I_p = 1.5
 z/h ≤ 1.0

(12) #12 TYPE AB S.M.S. @ $\frac{3}{4}$ " E.W. w/ #12 SAE WASHERS
 W/ PL $\frac{3}{16}$ "x5x5, 4 LOCATIONS

LIGHT GAUGE FRAMING
 W/ MAX 2 LAYERS GYP BOARD
 & 18GA BACKING



NOTE:

DIMENSIONS ARE TO CENTER OF SCREW
 GROUPS. INFO FOR MODEL SHOWN HERE IS
 THE 13" DEEP X 36" WIDE X 30" HIGH UNIT.



SOLAIRE MEDICAL
 CERTIFIES THIS DOCUMENT
 AS AN OUTLINE DRAWING
 SIGNATURE: *Benjamin Richter*
 PRINT NAME: Benjamin Richter
 TITLE: GM
 DATE: 12/21/18

SERIES: EVOLVE
 DESCRIPTION: MELAMINE
 MATERIAL: MELAMINE
 UPPER 8 OF 12

SOLAIRE
 MEDICAL
 PO Box 2808
 Grand Rapids, MI 49501
 Office: 888.435.2256
 Fax: 616.743.5944
 www.solairemedical.com

EVOLVE STAINLESS STEEL CABINETS

BASE CABINETS, STAINLESS STEEL

Solid Doors	Depth	Width	Height	Empty Weight	Full Weight	$\Omega_0 T_u$	$\Omega_0 V_u$
SES1927BSLNC SES1927BSRNC	19.25 in	26.75 in	34.5 in	125	464 lbs	671 lbs	418 lbs
SES2719BSLNC SES2719BSRNC	27.25 in	18.75 in	34.5 in	131 lbs	468 lbs	1193 lbs	421 lbs
SES2736BSC SES2736BSNC	27.25 in	36.0 in	34.5 in	190 lbs	836 lbs	1080 lbs	753 lbs

- Notes: 1. T_u , V_u , apply at each expansion anchor and include Ω_0 .
 2. Weights shown are for heaviest product in each available size.
 3. The center of gravity weight is a maximum. This preapproval encompasses all weights up to the maximum weight shown.
 4. Equipment manufacturer must design unit to make center of gravity height less than the center of gravity height shown.

CABINET SPECIFICATIONS

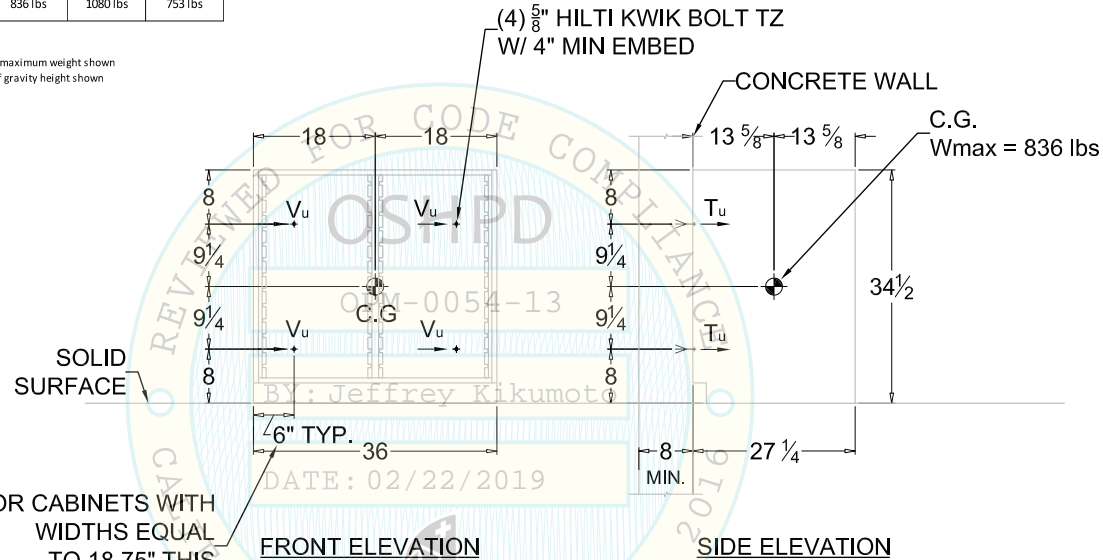
ASTM A240 304 STAINLESS STEEL
 18 GA PANELS
 14 GA FRAME
 $F_y = 30$ Ksi

SUBSTRATE REQUIREMENTS

8" CONCRETE WALL, 3000 PSI NORMAL WEIGHT
 NORMAL WEIGHT
 SEE S0.01 FOR SPACING & EDGE DISTANCE REQUIREMENTS
 FLOOR: MIN. 3.25" LWC OR 3" NWC SLAB
 $f'_c = 3,000$ PSI MIN.

PARAMETERS

$S_{DS} \leq 2.5$
 $a_p = 1.0$; $R_p = 2.5$
 $I_p = 1.5$
 $z/h \leq 1.0$
 $\Omega_0 = 2.0$ (APPLICABLE WHERE ATTACHMENT TO CONCRETE OCCURS)



SOLAIRE MEDICAL
 CERTIFIES THIS DOCUMENT
 AS AN OUTLINE DRAWING
 SIGNATURE: *Benjamin Baker*
 PRINT NAME: Benjamin Baker
 TITLE: GM
 DATE: 12/21/18

MATERIAL: STAINLESS
 DESCRIPTION: EVOLVE BASE
 9 OF 12

Solaire
 MEDICAL
 PO Box 2808
 Grand Rapids, MI 49501
 Office: 888.435.2256
 Fax: 616.743.5944
 www.solairemedical.com

EVOLVE STAINLESS STEEL CABINETS

BASE CABINETS, STAINLESS STEEL

Solid Doors	Depth	Width	Height	Empty Weight	Full Weight	T _u	V _u
SES1927B5LNC SES1927B5RNC	19.25 in	26.75 in	34.5 in	125	464 lbs	335 lbs	209 lbs
SES2719B5LNC SES2719B5RNC	27.25 in	18.75 in	34.5 in	131 lbs	468 lbs	597 lbs	210 lbs
SES2736B5C SES2736B5NC	27.25 in	36.0 in	34.5 in	190 lbs	836 lbs	540 lbs	376 lbs

- Notes: 1. T_u, V_u, apply at each expansion anchor and include Ω_b.
 2. Weights shown are for heaviest product in each available size.
 3. The center of gravity weights is a maximum. This preapproval encompasses all weights up to the maximum weight shown.
 4. Equipment manufacturer must design unit to make center of gravity height less than the center of gravity height shown.

CABINET SPECIFICATIONS

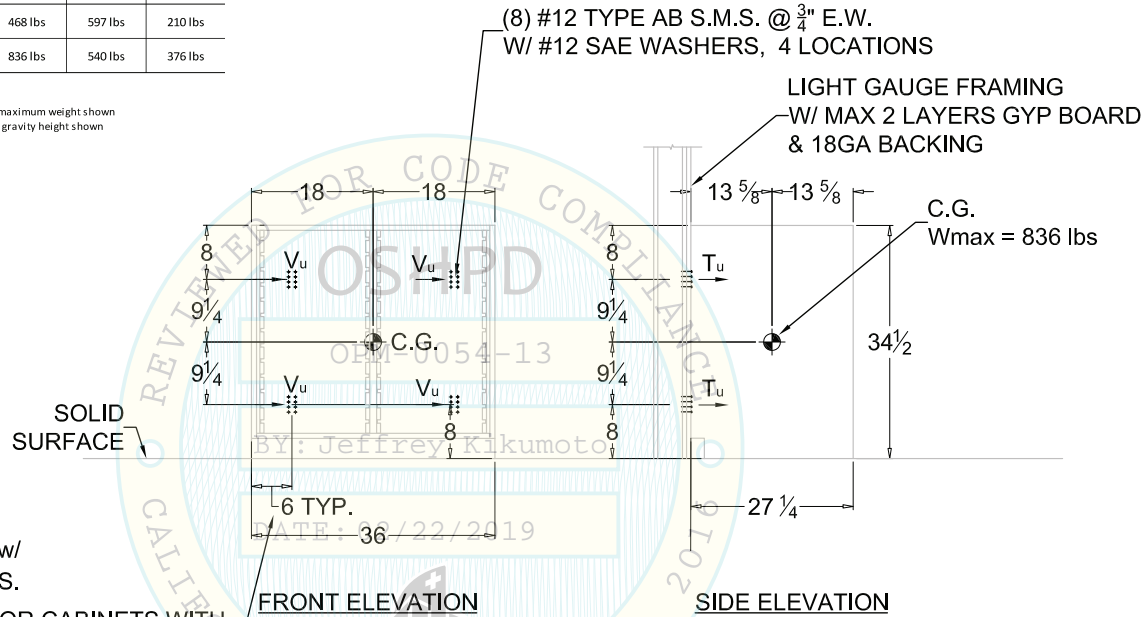
ASTM A240 304 STAINLESS STEEL
 18 GA PANELS
 14 GA FRAME
 F_y = 30 Ksi

SUBSTRATE REQUIREMENTS

LIGHT GAUGE FRAMING W/ 18 GA BACKING w/
 MIN. 1/2" EDGE DISTANCE FOR ATTACHMENTS.
 ATSM A653, GRADE 33 MIN.
 FLOOR: MIN. 3.25" LWC OR 3" NWC SLAB
 f'c = 3,000 PSI MIN.

PARAMETERS

S_{DS} <= 2.5
 a_p = 1.0; R_p = 2.5
 I_p = 1.5
 z/h <= 1.0



FOR CABINETS WITH
 WIDTHS EQUAL
 TO 18.75" THIS
 DIMENSION IS 4"

NOTE:
 DIMENSIONS ARE TO CENTER OF SCREW
 GROUPS. INFO FOR MODEL SHOWN HERE IS
 THE 27.25" DEEP X 36" WIDE X 34.5" HIGH UNIT.



SOLAIRE MEDICAL
 CERTIFIES THIS DOCUMENT
 AS AN OUTLINE DRAWING
 SIGNATURE: *Benjamin Baker*
 PRINT NAME: Benjamin Baker
 TITLE: G.M.
 DATE: 12/21/18

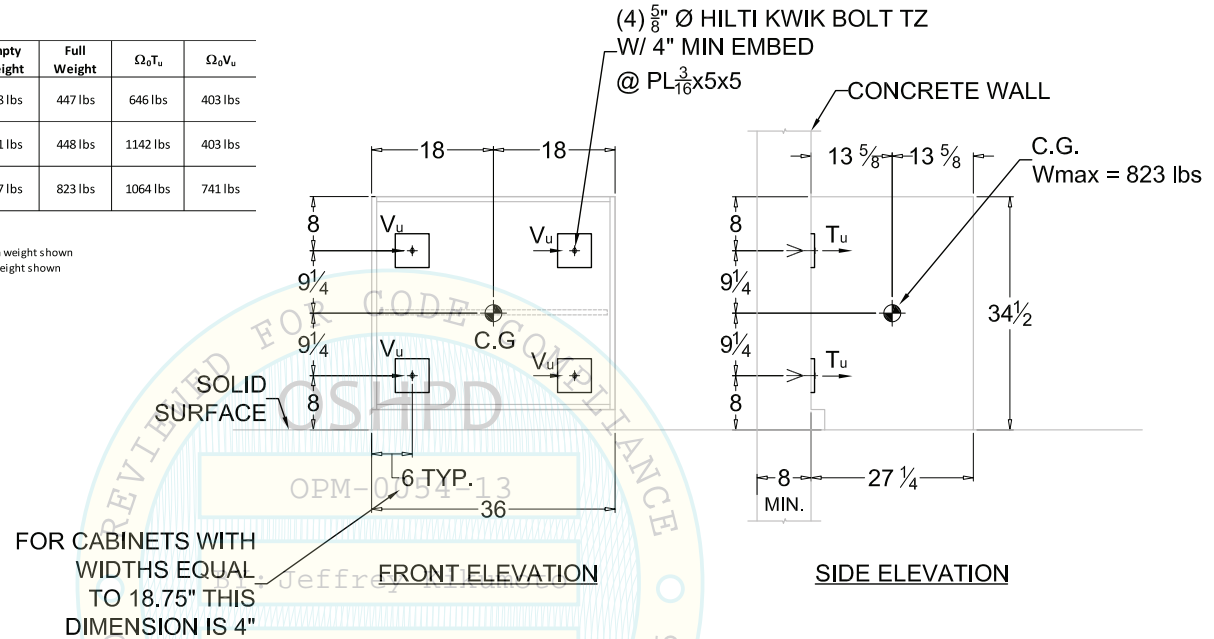
MATERIAL: STAINLESS
 DESCRIPTION: EVOLVE BASE
 SERIES: 10 OF 12
 SOLAIRE MEDICAL
 PO Box 2808
 Grand Rapids, MI 49501
 Office: 888.435.2256
 Fax: 616.743.5944
 www.solairemedical.com

EVOLVE PARTICLE BOARD BASE CABINETS

BASE CABINETS, PARTICLEBOARD

Solid Doors	Roll-Top Doors	Depth	Width	Height	Empty Weight	Full Weight	$\Omega_0 T_u$	$\Omega_0 V_u$
SEC1927BSLNC SEC1927BSRNC	-	19.25 in	26.75 in	34.5 in	108 lbs	447 lbs	646 lbs	403 lbs
SEC2719BSLNC SEC2719BSRNC	SEC2719BRTNC	27.25 in	18.75 in	34.5 in	111 lbs	448 lbs	1142 lbs	403 lbs
SEC2736BSC SEC2736BSNC	SEC2736BRTC SEC2736BRTNC	27.25 in	36.0 in	34.5 in	177 lbs	823 lbs	1064 lbs	741 lbs

Notes: 1. T_u , V_u , apply at each expansion anchor and include Ω_0 .
 2. Weights shown are for heaviest product in each available size.
 3. The center of gravity weight is a maximum. This preapproval encompasses all weights up to the maximum weight shown
 4. Equipment manufacturer must design unit to make center of gravity height less than the center of gravity height shown



FOR CABINETS WITH WIDTHS EQUAL TO 18.75" THIS DIMENSION IS 4"

FRONT ELEVATION

SIDE ELEVATION

NOTE: INFO FOR MODEL SHOWN HERE IS THE 27.25" DEEP X 36" WIDE X 34.5" HIGH UNIT.

CABINET SPECIFICATIONS

3/4" TAFISA TAFIPAN M-2 (ANSI A208.1)
 PARTICLE BOARD PANELS

SUBSTRATE REQUIREMENTS

8" CONCRETE WALL, 3000 PSI NORMAL WEIGHT
 SEE S0.01 FOR SPACING & EDGE DISTANCE REQUIREMENTS
 FLOOR: MIN. 3.25" LWC OR 3" NWC SLAB
 $f'c = 3,000$ PSI MIN.

PARAMETERS

$S_{Ds} \leq 2.5$
 $a_p = 1.0$; $R_p = 2.5$
 $I_p = 1.5$
 $z/h \leq 1.0$
 $\Omega_0 = 2.0$ (APPLICABLE WHERE ATTACHMENT TO CONCRETE OCCURS)



SOLAIRE MEDICAL
 CERTIFIES THIS DOCUMENT
 AS AN OUTLINE DRAWING
 SIGNATURE: *Benjamin Butler*
 PRINT NAME: Benjamin Butler
 TITLE: GM
 DATE: 12/21/18

SERIES: EVOLVE
 DESCRIPTION: MELAMINE BASE
 MATERIAL: MELAMINE
 11 OF 12

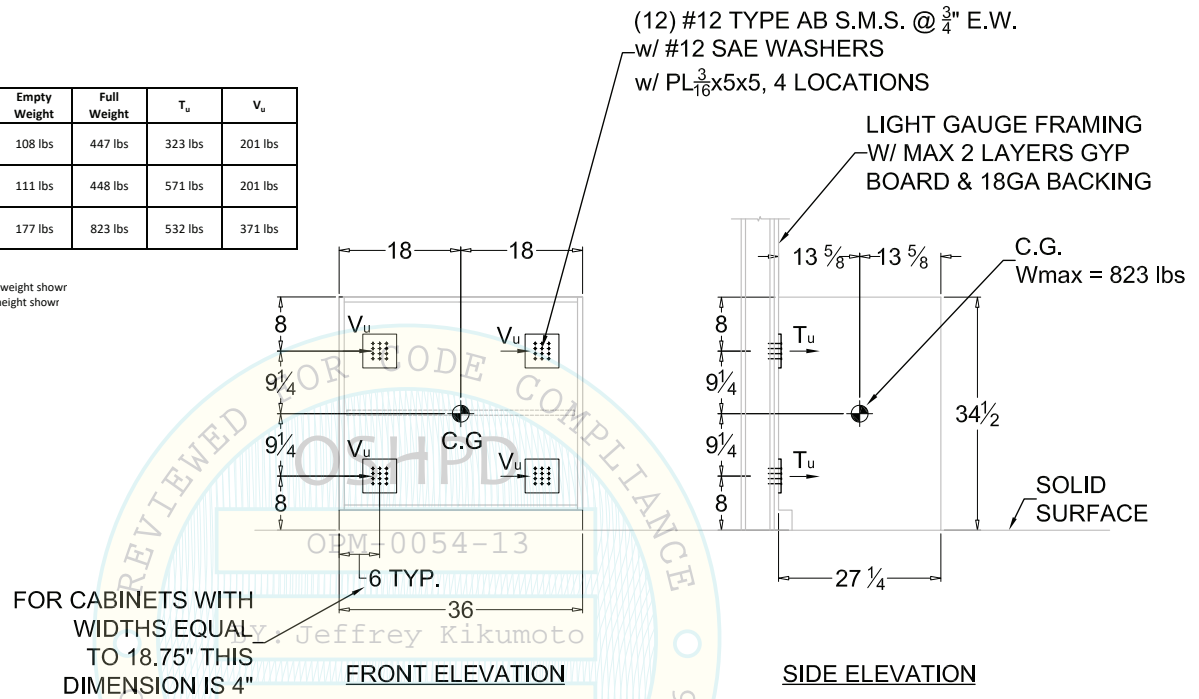
Solaire
 MEDICAL
 PO Box 2808
 Grand Rapids, MI 49501
 Office: 888.435.2256
 Fax: 616.743.5944
 www.solairemedical.com

EVOLVE PARTICLE BOARD BASE CABINETS

BASE CABINETS, PARTICLEBOARD

Solid Doors	Roll-Top Doors	Depth	Width	Height	Empty Weight	Full Weight	T _u	V _u
SEC1927BSLNC SEC1927BSRNC	-	19.25 in	26.75 in	34.5 in	108 lbs	447 lbs	323 lbs	201 lbs
SEC2719BSLNC SEC2719BSRNC	SEC2719BRTNC	27.25 in	18.75 in	34.5 in	111 lbs	448 lbs	571 lbs	201 lbs
SEC2736BSC SEC2736BSNC	SEC2736BRTC SEC2736BRTNC	27.25 in	36.0 in	34.5 in	177 lbs	823 lbs	532 lbs	371 lbs

Notes: 1. Tu, Vu, apply at each expansion anchor and include Ω_p.
 2. Weights shown are for heaviest product in each available size.
 3. The center of gravity weight is a maximum. This preapproval encompasses all weights up to the maximum weight shown.
 4. Equipment manufacturer must design unit to make center of gravity height less than the center of gravity height shown.



CABINET SPECIFICATIONS

3/4" TAFISA TAFIPAN M-2 (ANSI A208.1)
 PARTICLE BOARD PANELS

SUBSTRATE REQUIREMENTS

LIGHT GAUGE FRAMING W/ 18 GA BACKING
 w/ MIN. 1/2" EDGE DISTANCE FOR ATTACHMENTS.
 ATSM A653, GRADE 33 MIN.
 FLOOR: MIN. 3.25" LWC OR 3" NWC SLAB
 f'c = 3,000 PSI MIN.

PARAMETERS

S_{DS} <= 2.5
 a_p = 1.0; R_p = 2.5
 I_p = 1.5
 z/h <= 1.0

DATE: 02/22/2019

NOTE:
 DIMENSIONS ARE TO CENTER OF SCREW GROUPS. INFO FOR MODEL SHOWN HERE IS THE 27.25" DEEP X 36" WIDE X 34.5" HIGH UNIT.



SOLAIRE MEDICAL
 CERTIFIES THIS DOCUMENT
 AS AN OUTLINE DRAWING
 SIGNATURE: *Benjamin Rivera*
 PRINT NAME: Benjamin Rivera
 TITLE: GM
 DATE: 12/21/18

SERIES: EVOLVE
 DESCRIPTION: BASE
 MATERIAL: MELAMINE
 12 OF 12

Solaire
 MEDICAL
 PO Box 2808
 Grand Rapids, MI 49501
 Office: 688.435.2256
 Fax: 616.743.5944
 www.solairemedical.com