



**OFFICE OF STATEWIDE HEALTH PLANNING AND DEVELOPMENT
FACILITIES DEVELOPMENT DIVISION**

**APPLICATION FOR OSHPD PREAPPROVAL OF
MANUFACTURER'S CERTIFICATION (OPM)**

OFFICE USE ONLY

APPLICATION #: OPM-0156

OSHPD Preapproval of Manufacturer's Certification (OPM)

Type: New Renewal/Update

Manufacturer Information

Manufacturer: IPA, Inc.

Manufacturer's Technical Representative: Steve Blomberg

Mailing Address: 3059 Premiere Parkway Suite 200, Duluth, GA 30097

Telephone: () - Email: sblomberg@thinkipa.com

Product Information

Product Name: aEx SD, aEx SD64 2.0 and scrubEx XL

Product Type: Other Mechanical Components Constructed of High-deformability materials

Product Model Number: N/A

General Description: Dispenses Clean Linen to Authorized EMS Personnel

Applicant Information

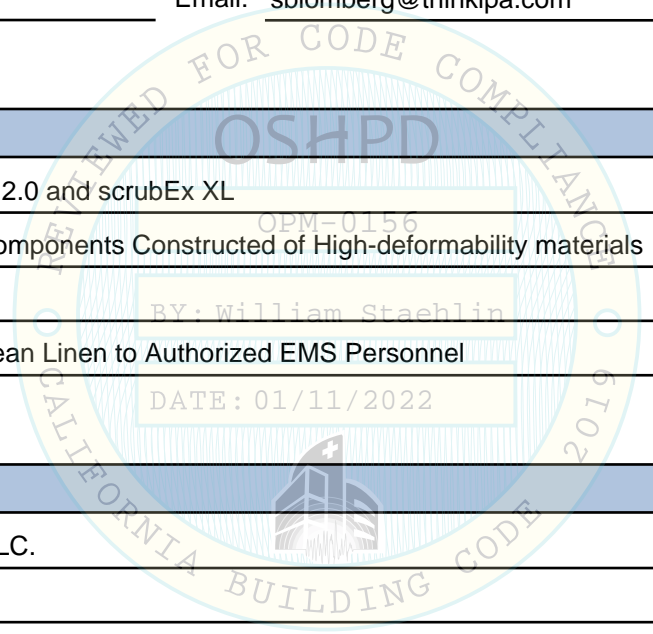
Applicant Company Name: EASE LLC.

Contact Person: Tiffany Tonn

Mailing Address: 1515 FAIRVIEW AVE, STE 205, MISSOULA, MT 59801

Telephone: (406) 541-3273 Email: tiffany@easeco.com

Title: Office Manager



Access to Safe, Quality Healthcare Environments that Meet California's Diverse and Dynamic Needs

STATE OF CALIFORNIA – HEALTH AND HUMAN SERVICES AGENCY





**OFFICE OF STATEWIDE HEALTH PLANNING AND DEVELOPMENT
FACILITIES DEVELOPMENT DIVISION**

Registered Design Professional Preparing Engineering Recommendations

Company Name: EASE
Name: Jonathan Roberson California License Number: S4197
Mailing Address: 5877 Pine Ave., Suite 210, Chino Hills, CA 91709
Telephone: (951) 295-1892 Email: jon@EASECo.com

OSHDP Special Seismic Certification Preapproval (OSP)

Special Seismic Certification is preapproved under OSP OSP Number: _____

Certification Method

Testing in accordance with: ICC-ES AC156 FM 1950-16
 Other(s) (Please Specify): _____

*Use of criteria other than those adopted by the California Building Standards Code, 2019 (CBSC 2019) for component supports and attachments are not permitted. For distribution system, interior partition wall, and suspended ceiling seismic bracings, test criteria other than those adopted in the CBSC 2019 may be used when approved by OSHDP prior to testing.

- Analysis
- Experience Data
- Combination of Testing, Analysis, and/or Experience Data (Please Specify): _____

OSHDP Approval

Date: 1/11/2022
Name: William Staehlin Title: Senior Structural Engineer
Condition of Approval (if applicable): _____

"Access to Safe, Quality Healthcare Environments that Meet California's Diverse and Dynamic Needs"

STATE OF CALIFORNIA – HEALTH AND HUMAN SERVICES AGENCY





**EQUIPMENT ANCHORAGE
& SEISMIC ENGINEERING**

5877 Pine Ave, Ste. 210
Chino Hills, CA. 91709
Phn: (909) 606-7622

Office of Statewide Health Planning and Development
PREAPPROVAL OF MANUFACTURER'S CERTIFICATION
OPM-0156

THIS PREAPPROVAL CONFORMS TO THE 2019 CALIFORNIA BUILDING CODE

MANUFACTURER: **IPA, LLC**
EQUIPMENT NAME: **aEx SD, aEx SD64 2.0 & scrubEX XL DISPENSER**

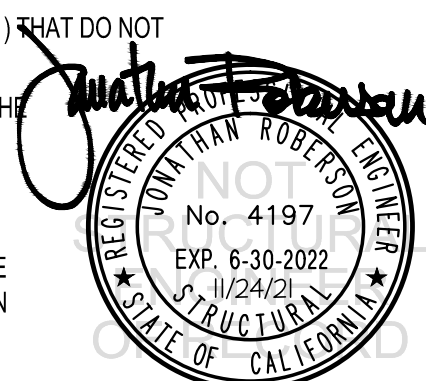
Sheet: 1 of 12
Date: 11/24/21

GENERAL NOTES

1. THIS OSHPD PREAPPROVAL OF MANUFACTURER'S CERTIFICATION (OPM) IS BASED ON THE 2019 CBC. THE DEMANDS (DESIGN FORCES) FOR USE WITH THIS OPM SHALL BE BASED ON THE 2019 CBC
2. THIS DOCUMENT MAY ONLY BE USED WITH THE EXPRESS WRITTEN CONSENT OF THE MANUFACTURER LISTED ABOVE FOR THE SPECIFIC PROJECT SITE AND INSTALLATION LOCATION. THIS DOCUMENT IS INVALID WITHOUT SUCH CONSENT.
3. THIS PREAPPROVAL CONFORMS TO THE 2019 CALIFORNIA BUILDING CODE WHERE S_{Ds} IS NOT GREATER THAN 1.50, 2.20. SEE DETAIL FOR APPLICABILITY
4. FORCES PER ASCE 7-16 SECTION 13.3.1, EQUATIONS 13.3-1, 13.3-2 & 13.3-3,
WHERE $S_{Ds} = 1.50$, $a_p = 1.0$, $I_p = 1.5$, $R_p = 2.5$, $z/h = 0$ AT CONCRETE SLAB. SEE FOLLOWING SHEETS FOR Ω_a
WHERE $S_{Ds} = 2.20$, $a_p = 1.0$, $I_p = 1.5$, $R_p = 2.5$, $z/h = 0$ AT CONCRETE SLAB & $z/h \leq 1$ AT CONCRETE SLAB ON METAL DECK.
SEE FOLLOWING SHEETS FOR Ω_a
5. THIS PREAPPROVAL COVERS ONLY THE SUPPORTS AND ATTACHMENTS OF THE EQUIPMENT TO THE STRUCTURE.
6. ALL DESIGN FORCES SHOWN ON THE DRAWINGS ARE FACTORED LOADS THAT SHALL BE USED FOR STRENGTH DESIGN.
7. CONCRETE SLAB ON METAL DECK DETAIL VALID FOR DEMANDS SHOWN AT ANY ELEVATION IN THE BUILDING. (i.e. $z/h \leq 1$)
8. CONCRETE SLAB DETAIL VALID FOR DEMANDS SHOWN AT OR BELOW GRADE. (i.e. $z/h = 0$)
9. SHEET METAL SCREWS SHALL BE TEKS SCREWS BY ITW BUILDEX (ICC ESR-1976).

10. RESPONSIBILITIES OF THE STRUCTURAL ENGINEER OF RECORD OF THE BUILDING

- A. PROVIDE SUPPORTING STRUCTURE TO SUPPORT WEIGHTS AND FORCES SHOWN IN ADDITION TO ALL OTHER LOADS.
- B. VERIFY THAT THE INSTALLATION IS IN CONFORMANCE WITH THE 2019 CBC AND WITH THE DETAILS, MATERIAL AND GAGE OF THE UNIT WHERE ATTACHMENTS ARE MADE AGREE WITH THE INFORMATION SHOWN ON THE PREAPPROVAL DOCUMENTS.
- C. VERIFY THAT PROJECT SPECIFIC VALUES OF S_{Ds} & z/h RESULT IN SEISMIC FORCES (E_h , E_v) THAT DO NOT EXCEED THE VALUES ON THE DETAILS.
- D. VERIFY THAT THE CONCRETE SLAB TO WHICH THE EQUIPMENT IS ANCHORED MEETS THE REQUIREMENTS OF THE APPLICABLE ICC ESR REPORT AND THIS OPM.
- E. VERIFY THAT THE ANCHORS ARE AN ADEQUATE DISTANCE FROM ANY SLAB EDGES OR OPENINGS (SEE TYPICAL DETAIL ON SHEET 2).
- F. VERIFY THAT ALL NEW OR EXISTING ANCHORS ARE AN ADEQUATE DISTANCE FROM THE UNIT ATTACHMENTS AND CHECK FOR INTERACTION WHERE OTHER ANCHORS ARE WITHIN 18" OR $6h_{ef}$ FROM THIS UNIT'S ANCHORS.



IPA, LLC

DES. **J. ROBERSON**

SHEET

2

JOB NO. **11-2127**

DATE **11/24/21**

OF **12** SHEETS

aIEx SD, aIEx SD64 2.0 & scrubEX XL DISPENSER

10. EXPANSION ANCHORS:

A. ATTACHMENT IS TO BE MADE WITH THE ANCHORS LISTED BELOW AND INSTALLED AS DESCRIBED IN THE CORRESPONDING ICC REPORT.

Anchor Diameter	Concrete Type	Min. f'c (psi)	Anchor Type	ICC Report No.	Min. Embed.	Min. Spacing	Min. Edge Dist.	Min. Conc. Thickness	Torque Test	Direct Tension Test
3/8"	Sand Light Weight	3000	Hilti Kwik Bolt TZ2 (CARBON STEEL)	ESR-4266	2"	6.75"	12"	See Detail "A"	30 FT-LB	N/A
1/2"	Normal Weight	3000	Hilti Kwik Bolt TZ2 (CARBON STEEL)	ESR-4266	3.25"	12"	24"	6"	50 FT-LB	3325 lb
5/8"	Normal Weight	3000	Hilti Kwik Bolt TZ2 (CARBON STEEL)	ESR-4266	4"	11"	24"	6"	40 FT-LB	4350 lb

B. THIS PREAPPROVAL ALLOWS FOR UP TO A MAXIMUM OF 2 ADJACENT CONCRETE SLAB EDGES, 24" AWAY MINIMUM (i.e. - CORNER). SEE ADJACENT DETAIL FOR ADDITIONAL MINIMUM ALLOWABLE CONCRETE EDGE DISTANCES.

C. TESTING AND SPECIAL INSPECTION OF EXPANSION ANCHORS SHALL BE PERFORMED BY AN APPROVED INDEPENDENT AGENCY EMPLOYED BY THE FACILITY OWNER PER CBC 1704A & 1910A.5-0156 AND CAC 7-149. ALL REPORTS SHALL BE SENT TO THE INSPECTOR OF RECORD, OWNER AND THE ARCHITECT OR ENGINEER IN RESPONSIBLE CHARGE.

(i) AFTER AT LEAST 24 HOURS HAVE ELAPSED SINCE INSTALLATION, DIRECT PULL TENSION TEST OR TORQUE TEST AT LEAST 50% OF THE ANCHORS.

(ii) ACCEPTANCE CRITERIA:

- DIRECT TENSION TEST: THE ANCHOR SHOULD HAVE NO OBSERVABLE MOVEMENT AT THE TEST LOAD. A PRACTICAL WAY TO DETERMINE OBSERVABLE MOVEMENT IS THAT THE WASHER BECOMES LOOSE.
- TORQUE TEST: THE APPLICABLE TORQUE MUST BE ACHIEVED WITHIN THE FOLLOWING LIMITS: WEDGE TYPE : 1/2 TURN OF THE NUT

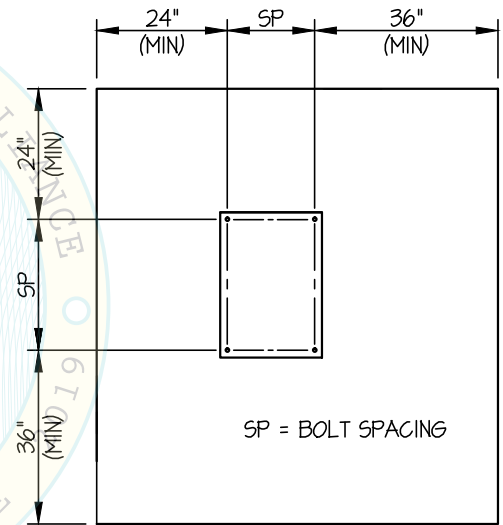
(iii) IF ANY ANCHOR FAILS, TEST ALL ANCHORS.

D. AVOID DAMAGING EXISTING STEEL REINFORCING IN CONCRETE SLAB WHEN INSTALLING CONCRETE EXPANSION ANCHORS.

E. PROVIDE FOR FULL THREAD ENGAGEMENT OF NUT & WASHER.

11. BOLTS THROUGH CONCRETE ON METAL DECK

- A. BOLTS SHALL BE TORQUED BY 3/4 TURN OF THE NUTS AFTER THE SNUG TIGHT (THE SNUG-TIGHT CONDITION IS DEFINED AS THE TIGHTNESS REQUIRED TO BRING THE CONNECTED PLIES INTO FIRM CONTACT) CONDITION IS ACHIEVED, UNLESS OTHERWISE NOTED.
- B. THROUGH BOLT HOLES SHALL BE 1/16" LARGER THAN BOLT SIZE (HOLE SIZE = BOLT SIZE + 1/16) FOR CONCRETE.
- C. THROUGH-BOLTS IN CONCRETE SHALL RECEIVE SPECIAL INSPECTION AND TESTING (THROUGH BOLTS WITH STEEL TO STEEL CONNECTION IN TENSION DO NOT REQUIRE TENSION TESTING) IN ACCORDANCE WITH REQUIREMENTS FOR POST-INSTALLED ANCHORS.



TYPICAL CONCRETE EDGE DETAIL
(SLAB ON GRADE ONLY)



IPA, LLC

DES. **J. ROBERSON**

SHEET

3

JOB NO. **11-2127**

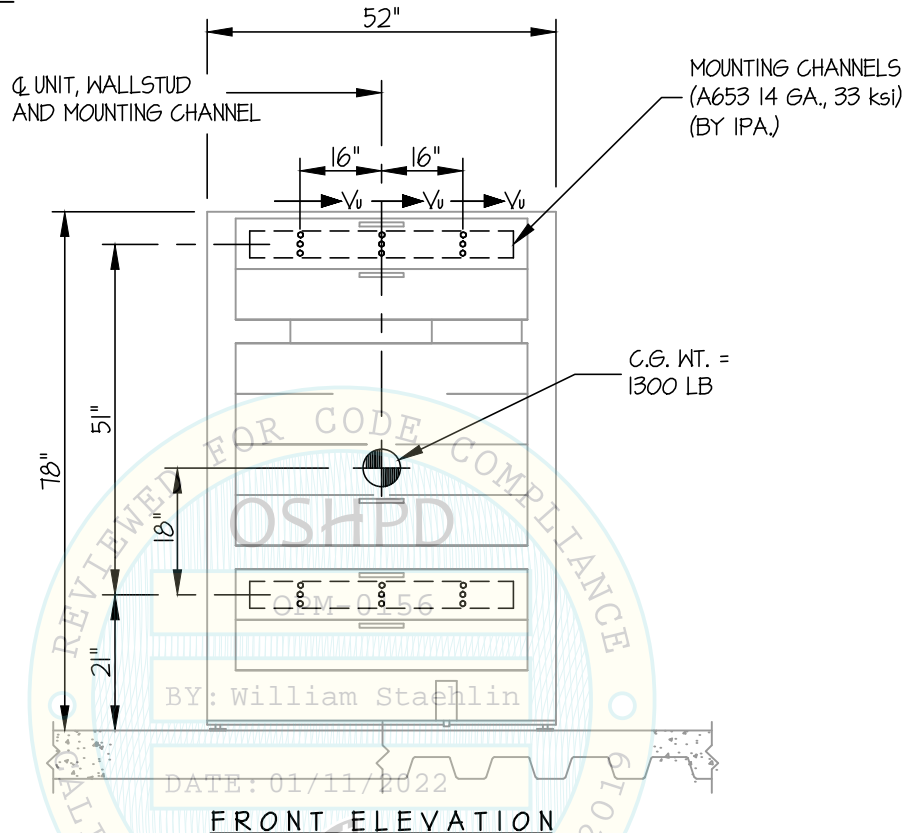
DATE **11/24/21**

OF **12** SHEETS

alEx SD, alEx SD64 2.0 & scrubEX XL DISPENSER

SEISMIC SUPPORTS & ATTACHMENTS

WALL MOUNTED



$T_u = 220$ LB/SCREW (MAX)
 $V_u = 148$ LB/SCREW (MAX)
 (VALUES DO NOT INCLUDE Ω)

NOTES:

1. **FORCES ARE DETERMINED PER 2019 CALIFORNIA BUILDING CODE AND ASCE 7-16.**

STRENGTH DESIGN IS USED. ($S_{ds} = 2.20$, $a_p = 1.0$, $I_p = 1.5$, $R_p = 2.5$, $\Omega_o = 2.0$, $z/h \leq 1$)

HORIZONTAL FORCE (E_h) = $1.58 W_p$

HORIZONTAL FORCE (E_{mh}) = $3.16 W_p$ (FOR CONCRETE ANCHORAGE)

VERTICAL FORCE (E_v) = $0.44 W_p$

2. CENTER OF GRAVITY (C.G.) AND WEIGHT ARE THE GOVERNING PARAMETERS FOR DESIGN. THIS PREAPPROVAL ENCOMPASSES ALL WEIGHTS UP TO THE MAXIMUM WEIGHT SHOWN.

3. STRUCTURAL ENGINEER OF RECORD FOR THE BUILDING SHALL PROVIDE SUPPORT STRUCTURE DESIGNED TO SUPPORT WEIGHTS AND FORCES SHOWN IN COMBINATION WITH ALL OTHER LOADS THAT MAY BE PRESENT.

4. SEE GENERAL NOTES: SHEETS 1 AND 2.



IPA, LLC

DES. J. ROBERSON

SHEET

4

JOB NO. 11-2127

DATE 11/24/21

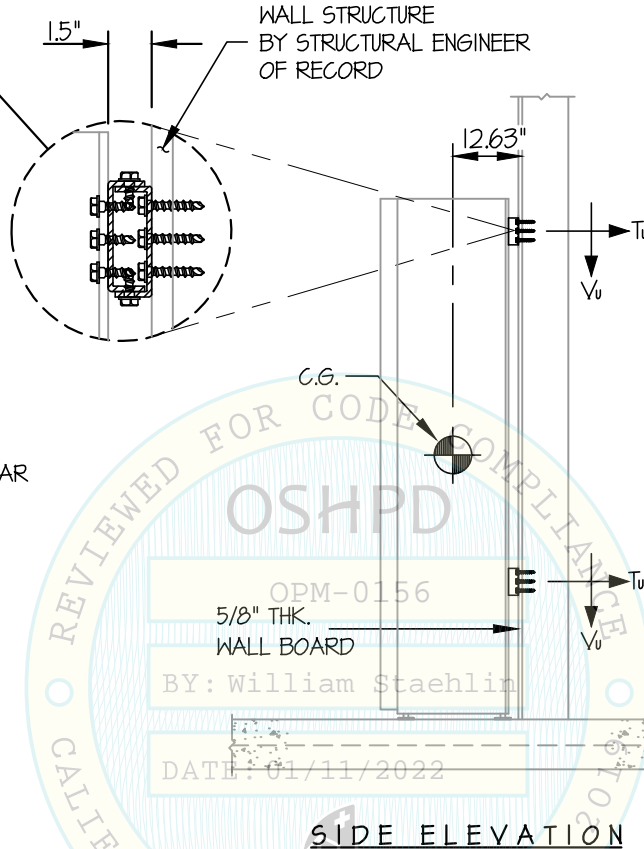
OF 12 SHEETS

aIEx SD, aIEx SD64 2.0 & scrubEX XL DISPENSER

SEISMIC SUPPORTS & ATTACHMENTS

WALL MOUNTED

SEE SHEET 5 OF 12 FOR UNIT TO CHANNEL, CHANNEL TO CHANNEL & CHANNEL TO WALL CONNECTIONS



NOTE: LOWER CONNECTION SIMILAR

SIDE ELEVATION



IPA, LLC

DES. **J. ROBERSON**

SHEET

5

JOB NO. **11-2127**

DATE **11/24/21**

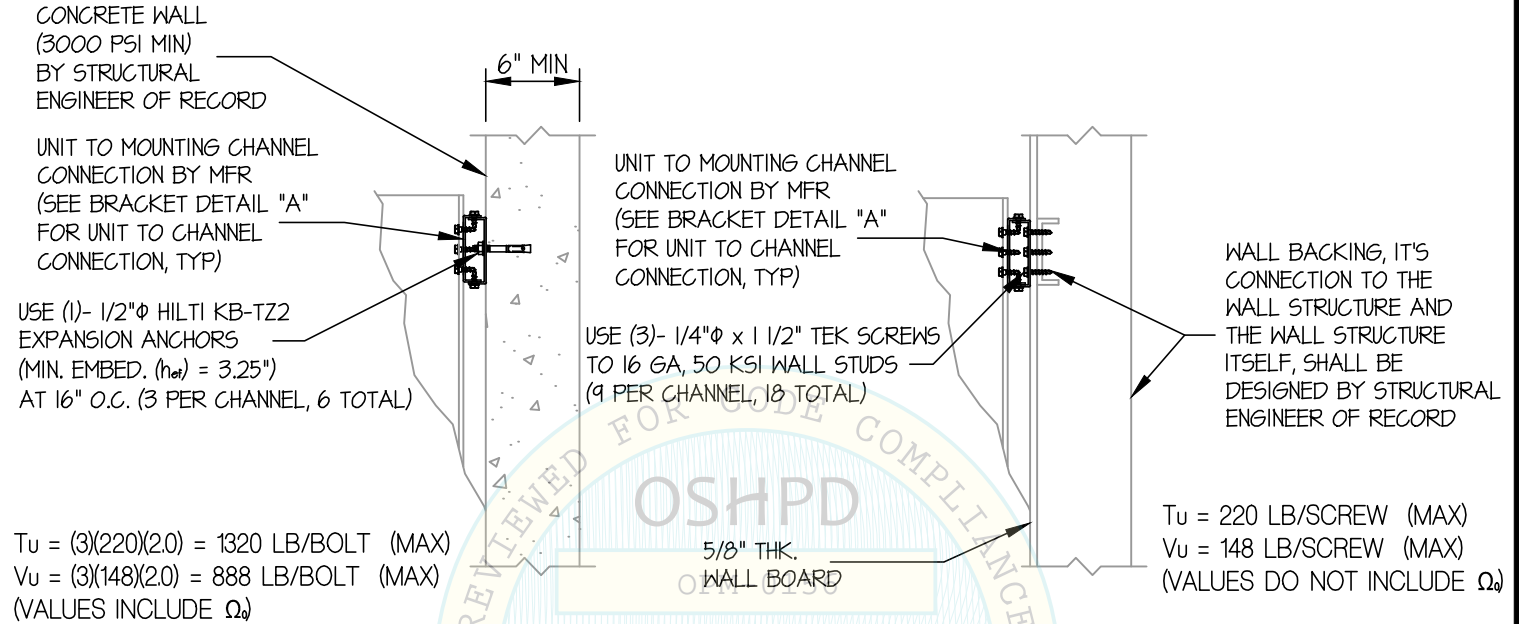
OF **12** SHEETS

alEx SD, alEx SD64 2.0 & scrubEX XL DISPENSER

SEISMIC SUPPORTS & ATTACHMENTS

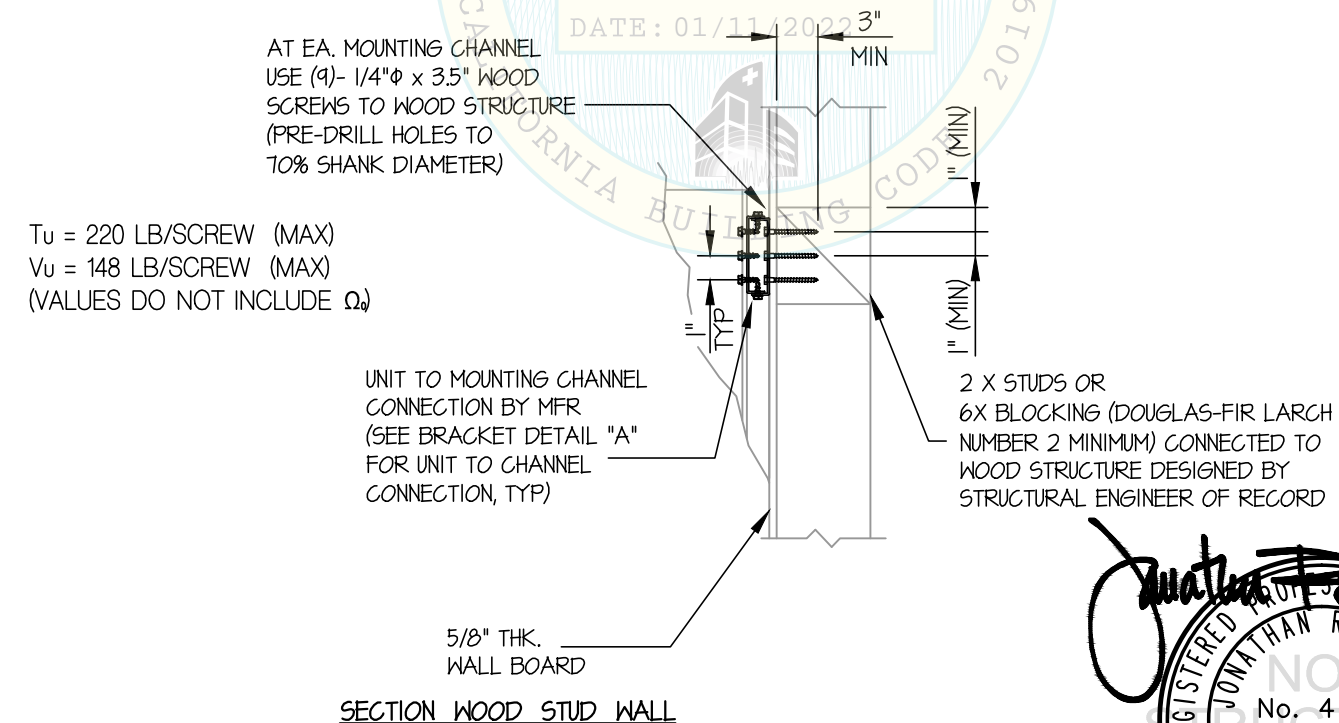
MOUNTING WALL TYPE:

WALL MOUNTED



SECTION AT CONCRETE WALL

SECTION AT STEEL STUD WALL



IPA, LLC

DES. **J. ROBERSON**

SHEET

6

JOB NO. **11-2127**

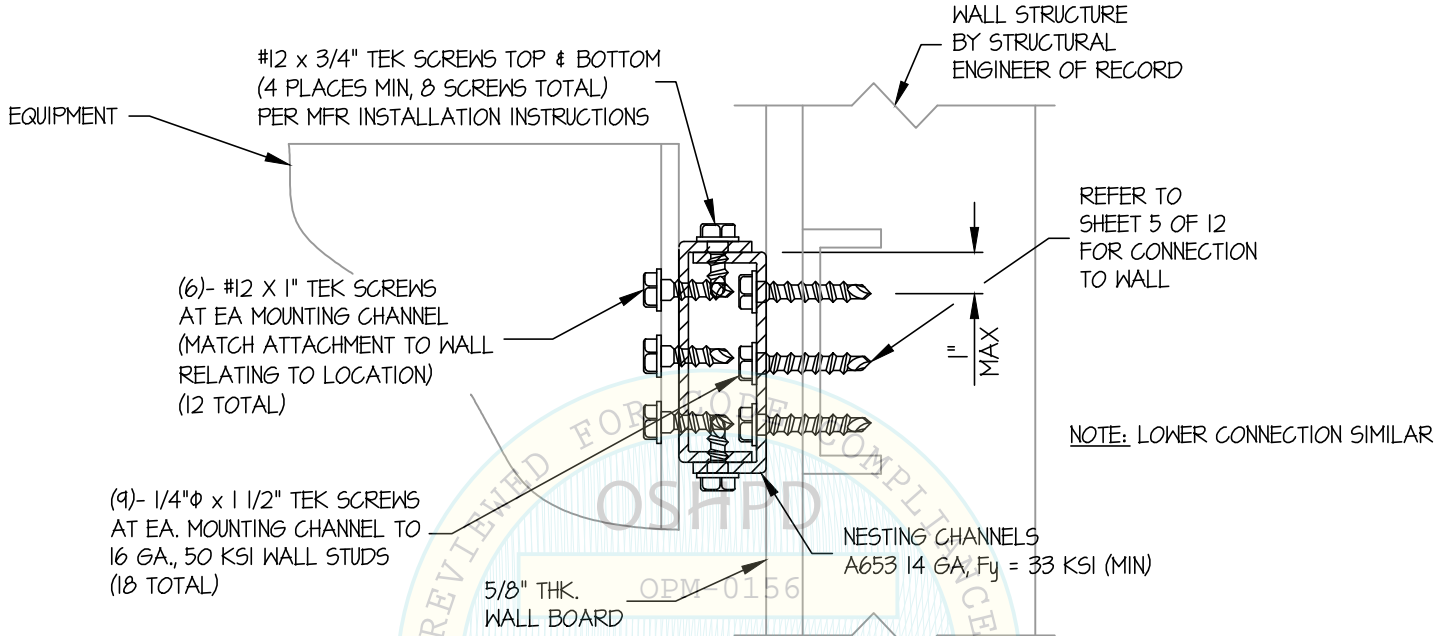
DATE **11/24/21**

OF **12** SHEETS

aIEx SD, aIEx SD64 2.0 & scrubEX XL DISPENSER

SEISMIC SUPPORTS & ATTACHMENTS

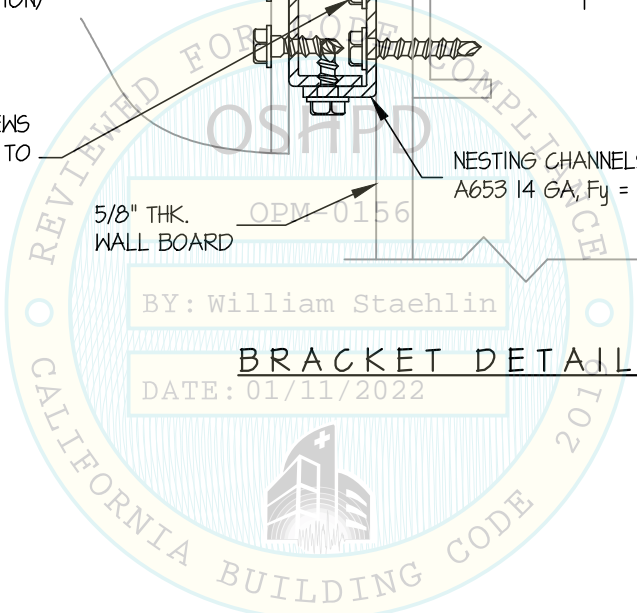
WALL BRACKET DETAIL



BY: William Staehlin

BRACKET DETAIL (A)

DATE: 01/11/2022



IPA, LLC

DES. **J. ROBERSON**

SHEET

7

JOB NO. **11-2127**

DATE **11/24/21**

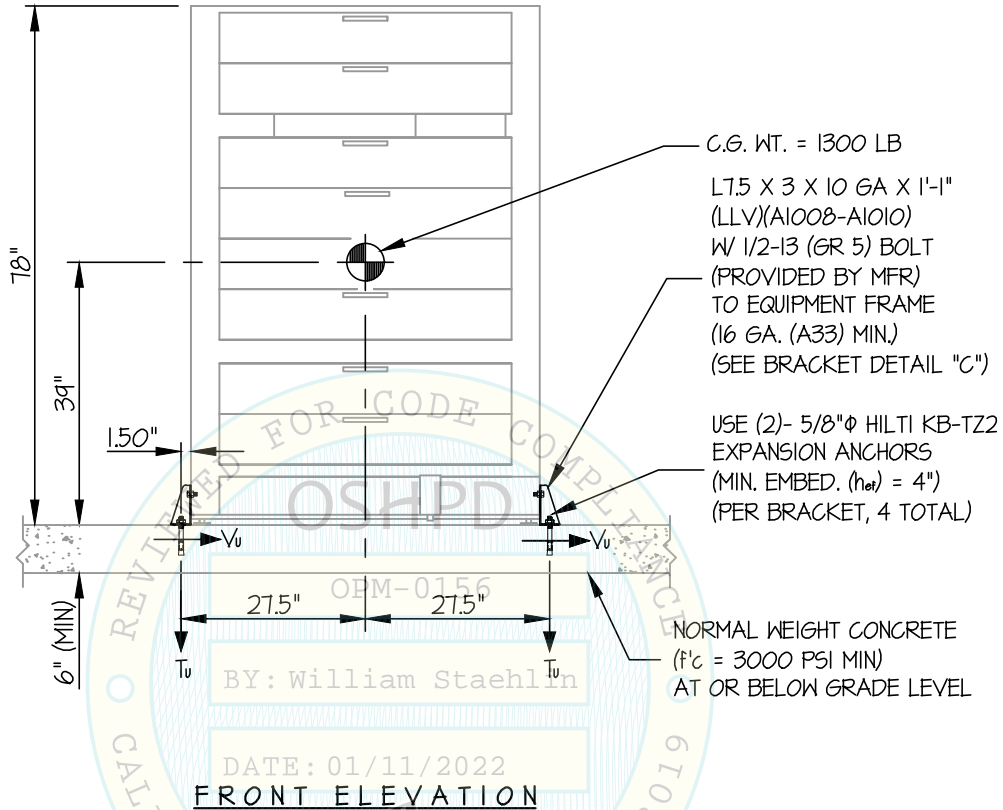
OF **12** SHEETS

alEx SD, alEx SD64 2.0 & scrubEX XL DISPENSER

SEISMIC SUPPORTS & ATTACHMENTS

FLOOR MOUNTED

CONCRETE SLAB



NOTES:

1. FORCES ARE DETERMINED PER 2019 CALIFORNIA BUILDING CODE AND ASCE 7-16.

STRENGTH DESIGN IS USED. (S_{ds} = 1.50, α_p = 1.0, l_p = 1.5, R_p = 2.5, Ω_o = 2.0, z/h = 0)

HORIZONTAL FORCE (E_h) = 0.675 W_p

HORIZONTAL FORCE (E_{mh}) = 1.35 W_p (FOR CONCRETE ANCHORAGE)

VERTICAL FORCE (E_v) = 0.30 W_p

2. CENTER OF GRAVITY (C.G.) AND WEIGHT ARE THE GOVERNING PARAMETERS FOR DESIGN. THIS PREAPPROVAL ENCOMPASSES ALL WEIGHTS UP TO THE MAXIMUM WEIGHT SHOWN.

3. STRUCTURAL ENGINEER OF RECORD FOR THE BUILDING SHALL PROVIDE SUPPORT STRUCTURE DESIGNED TO SUPPORT WEIGHTS AND FORCES SHOWN IN COMBINATION WITH ALL OTHER LOADS THAT MAY BE PRESENT.

4. SEE GENERAL NOTES: SHEETS 1 AND 2.



IPA, LLC

DES. **J. ROBERSON**

SHEET

8

JOB NO. **11-2127**

DATE **11/24/21**

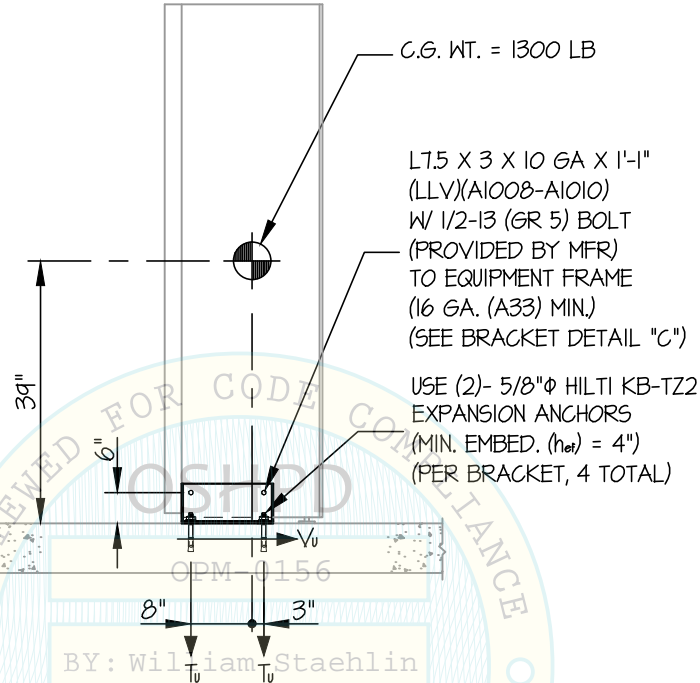
OF **12** SHEETS

aIEx SD, aIEx SD64 2.0 & scrubEX XL DISPENSER

SEISMIC SUPPORTS & ATTACHMENTS

FLOOR MOUNTED

CONCRETE SLAB



C.G. WT. = 1300 LB

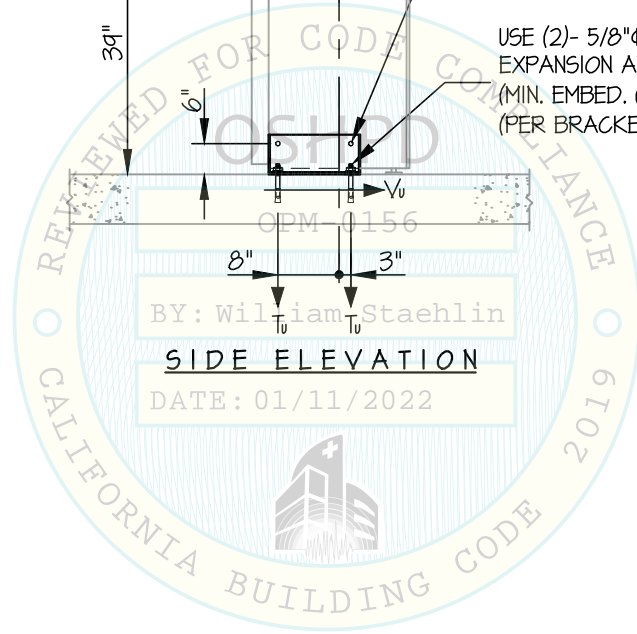
L7.5 X 3 X 10 GA X 1'-1"
(LLV)(A1008-A1010)
W/ 1/2-13 (GR 5) BOLT
(PROVIDED BY MFR)
TO EQUIPMENT FRAME
(16 GA. (A33) MIN.)
(SEE BRACKET DETAIL "C")

USE (2)- 5/8"Φ HILTI KB-TZ2
EXPANSION ANCHORS
(MIN. EMBED. (h_{ef}) = 4")
(PER BRACKET, 4 TOTAL)

BY: William Staehlin

SIDE ELEVATION

DATE: 01/11/2022



IPA, LLC

DES. **J. ROBERSON**

SHEET

JOB NO. **11-2127**

9

DATE **11/24/21**

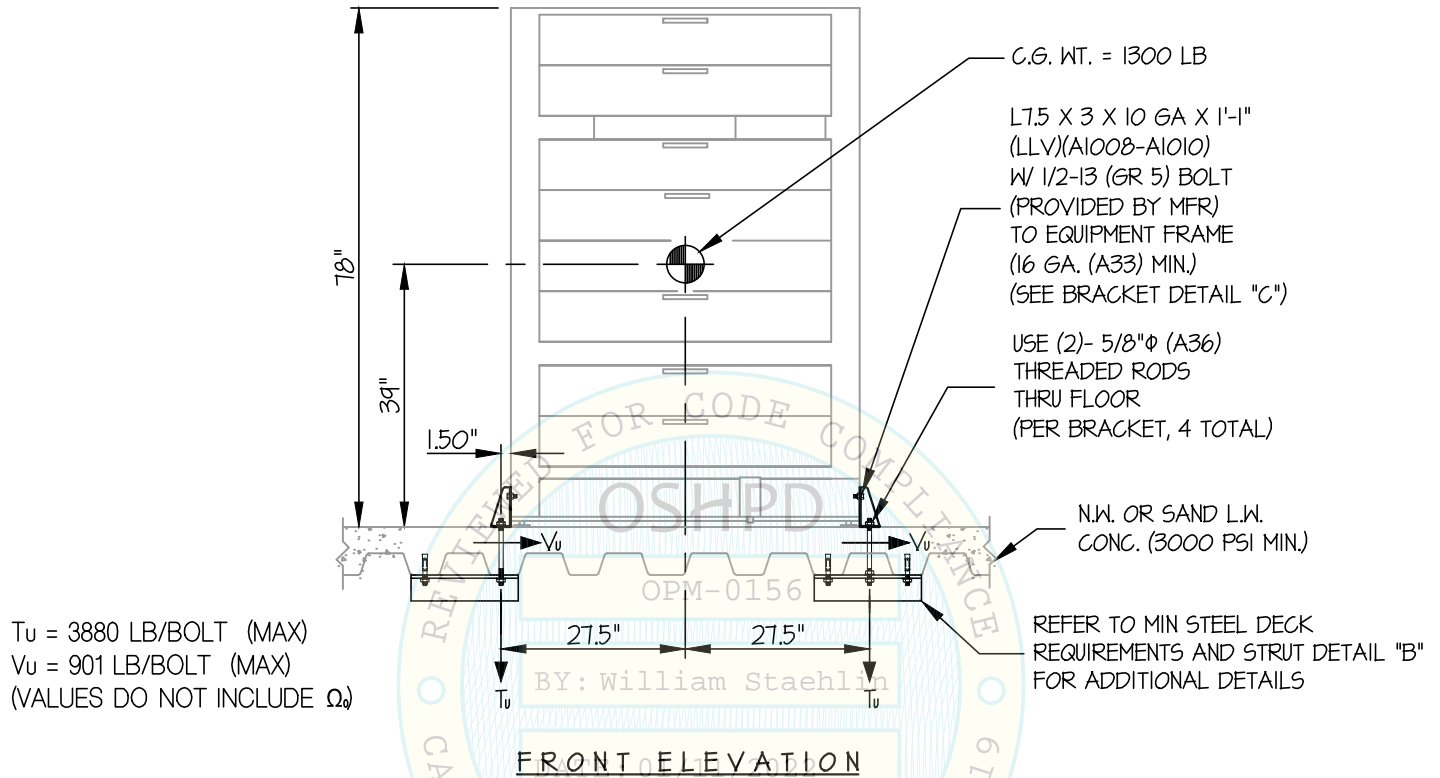
OF **12** SHEETS

**aIEx SD, aIEx SD64 2.0 & scrubEX XL
DISPENSER**

SEISMIC SUPPORTS & ATTACHMENTS

FLOOR MOUNTED

CONCRETE SLAB ON METAL DECK



NOTES:

- FORCES ARE DETERMINED PER 2019 CALIFORNIA BUILDING CODE AND ASCE 7-16.**
STRENGTH DESIGN IS USED. ($S_{ds} = 2.20$, $a_p = 1.0$, $I_p = 1.5$, $R_p = 2.5$, $\Omega_o = 2.0$, $z/h \leq 1$)

HORIZONTAL FORCE (E_h) = $158 W_p$

HORIZONTAL FORCE (E_{mh}) = $3.16 W_p$ (FOR CONCRETE ANCHORAGE)

VERTICAL FORCE (E_v) = $0.44 W_p$

- CENTER OF GRAVITY (C.G.) AND WEIGHT ARE THE GOVERNING PARAMETERS FOR DESIGN. THIS PREAPPROVAL ENCOMPASSES ALL WEIGHTS UP TO THE MAXIMUM WEIGHT SHOWN.
- STRUCTURAL ENGINEER OF RECORD FOR THE BUILDING SHALL PROVIDE SUPPORT STRUCTURE DESIGNED TO SUPPORT WEIGHTS AND FORCES SHOWN IN COMBINATION WITH ALL OTHER LOADS THAT MAY BE PRESENT.
- SEE GENERAL NOTES: SHEETS 1 AND 2.



IPA, LLC

DES. **J. ROBERSON**

SHEET

10

JOB NO. **11-2127**

DATE **11/24/21**

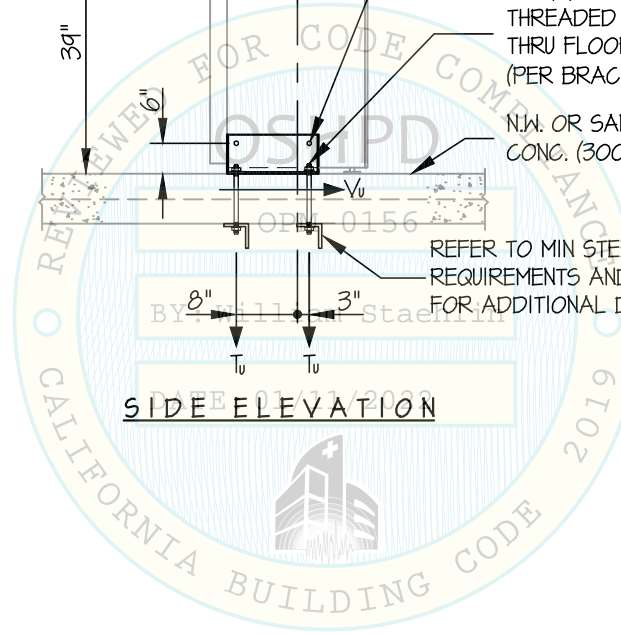
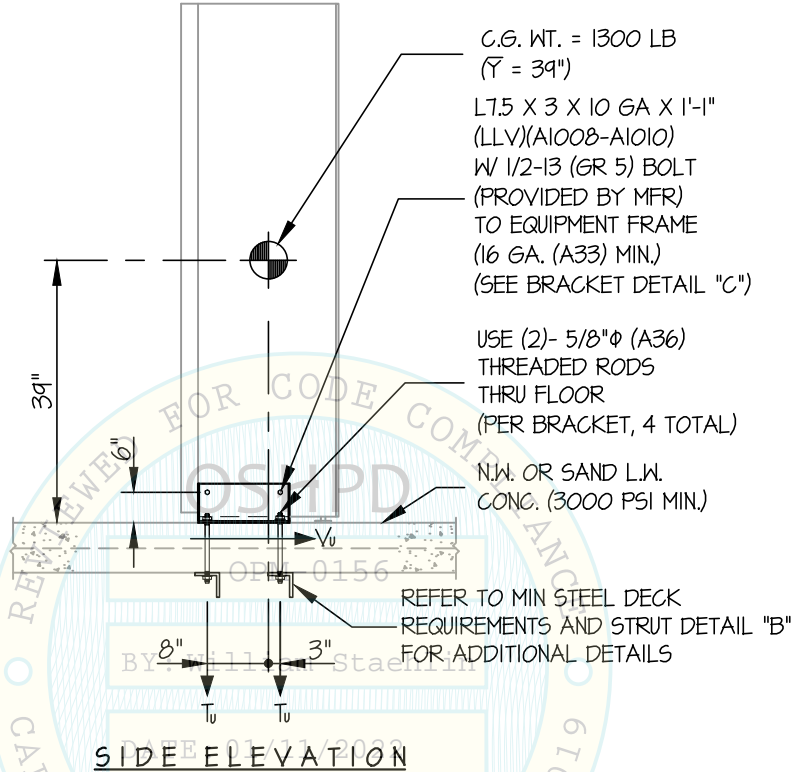
OF **12** SHEETS

**aIEx SD, aIEx SD64 2.0 & scrubEX XL
DISPENSER**

SEISMIC SUPPORTS & ATTACHMENTS

FLOOR MOUNTED

CONCRETE SLAB ON METAL DECK



IPA, LLC

DES. **J. ROBERSON**

SHEET

12

JOB NO. **11-2127**

DATE **11/24/21**

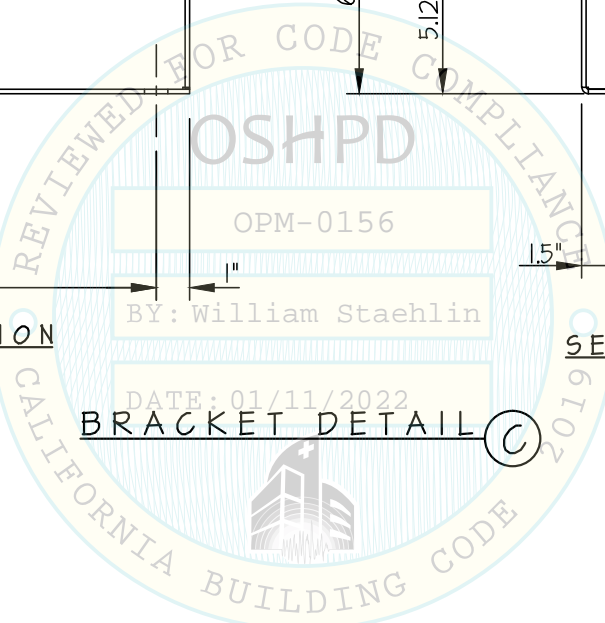
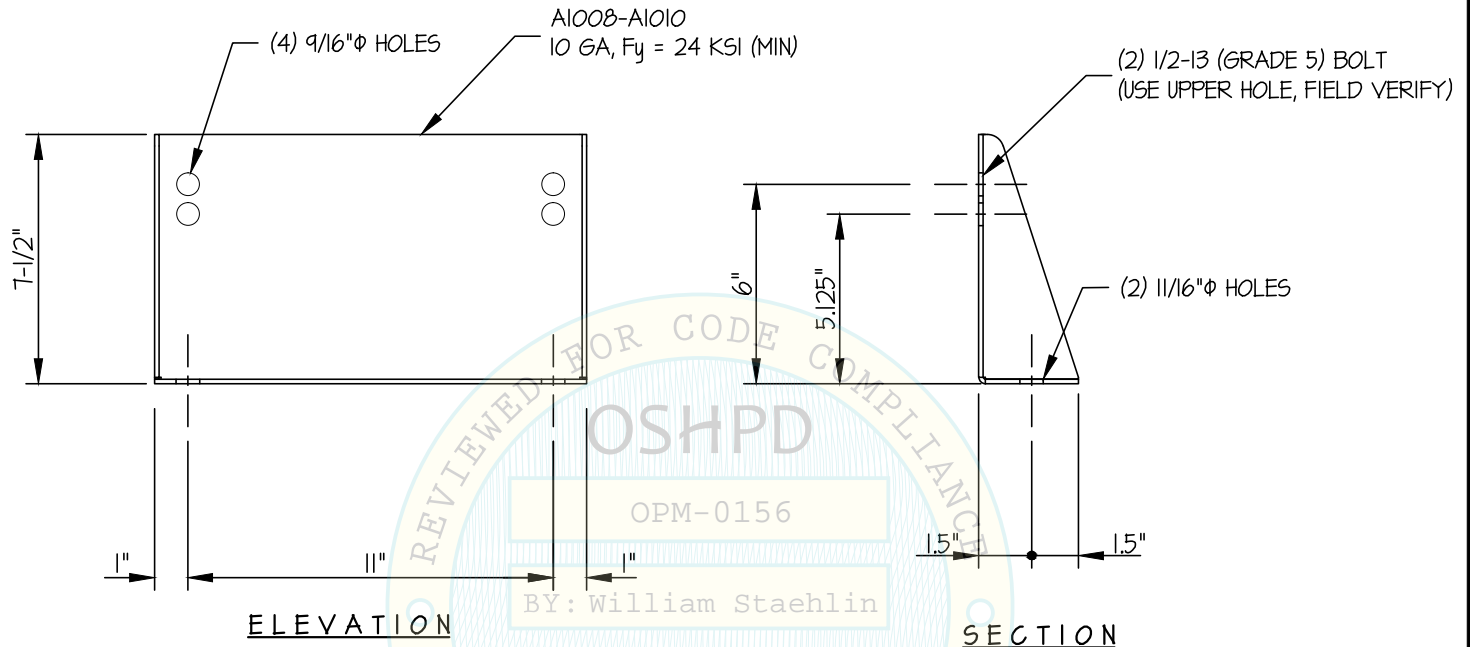
OF **12** SHEETS

**aIEx SD, aIEx SD64 2.0 & scrubEX XL
DISPENSER**

SEISMIC SUPPORTS & ATTACHMENTS

FLOOR MOUNTED

BRACKET DETAIL



BRACKET DETAIL (C)

