



OFFICE OF STATEWIDE HEALTH PLANNING AND DEVELOPMENT
FACILITIES DEVELOPMENT DIVISION

APPLICATION FOR OSHPD PREAPPROVAL OF
MANUFACTURER'S CERTIFICATION (OSM)

OFFICE USE ONLY
APPLICATION #: OPM-0206

OSHPD Preapproval of Manufacturer's Certification OPM)

Type: New Renewal/Update

Manufacturer Information

Manufacturer: NUAIRE, INC.

Manufacturer's Technical Representative: WILLAIM PETERS

Mailing Address: 2100 FERNBROOK LANE, PLYMOUTH, MN 55447

Telephone: (763) 553-1270 Email: BPETERS@NUAIRE.COM

Product Information

Product Name: COMPOUNDING ISOLATORS

Product Type: COMPOUNDING ASEPTIC & CONTAINMENT ISOLATORS

Product Model Number: Numerous models, see drawing 1 of 6 - 0206

General Description: Pharmacy isolators providing product, personnel and environmental protection used in the preparation of compounded pharmacy products. Haeseong Lim

Applicant Information

Applicant Company Name: LTK ASSOCIATES, INC.

Contact Person: RAYMOND Z. URIBES

Mailing Address: 745 DISTEL DRIVE, SUITE 7, LOS ALTOS, CA 94022

Telephone: () - Email: LTK@LTKSE.COM

Title:

Registered Design Professional Preparing Engineering Recommendations

Company Name: LTK ASSOCIATES, INC.

Name: Raymond Z. Uribes California License Number: S2479

Mailing Address: 745 Distel Drive, Suite 7, Los Altos, CA 94022

Telephone: (650) 967-8465 Email: ltk@ltkse.com

OSHPD Special Seismic Certification Preapproval (OSP)

Special Seismic Certification is preapproved under OSP OSP Number:



**OFFICE OF STATEWIDE HEALTH PLANNING AND DEVELOPMENT
FACILITIES DEVELOPMENT DIVISION**

Certification Method

Testing in accordance with: ICC-ES AC156 FM 1950-16

Other(s) (Please Specify): _____

*Use of criteria other than those adopted by the California Building Standards Code, 2019 (CBSC 2019) for component supports and attachments are not permitted. For distribution system, interior partition wall, and suspended ceiling seismic bracings, test criteria other than those adopted in the CBSC 2019 may be used when approved by OSHPD prior to testing.

Analysis

Experience Data

Combination of Testing, Analysis, and/or Experience Data (Please Specify): _____

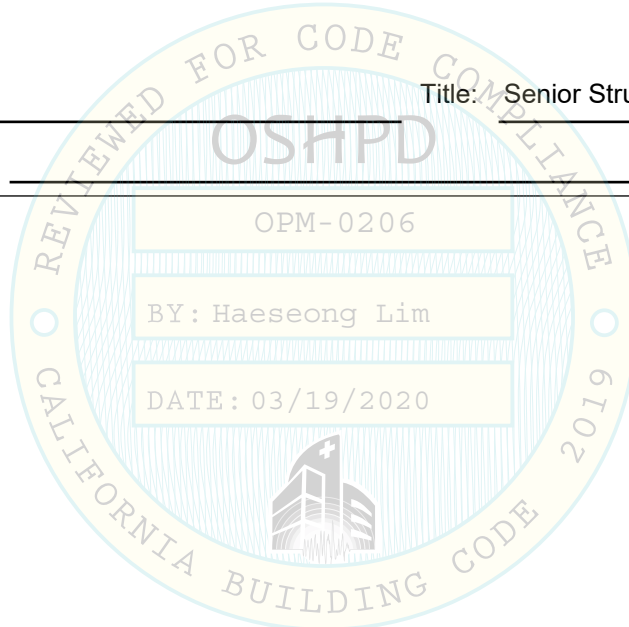
OSHPD Approval

Date: 3/19/2020

Name: Haeseong Lim

Title: Senior Structural Engineer

Condition of Approval (if applicable): _____



REV	ECO	DESCRIPTION	DATE	DRFT	CHKD
A	----	RELEASED TO PRODUCTION	9/8/15	LS	BP

Compounding Isolator Models	
Model Number	Associated Basestand Model Number
NU-PR797-400	NU-S700-101
NU-NR797-400	NU-S700-101
NU-NTE797-400	NU-S700-101
NU-NR800-400	NU-S700-101
NU-NTE800-400	NU-S700-101
NU-PR797-600	NU-S700-102
NU-NR797-600	NU-S700-102
NU-NTE797-600	NU-S700-102
NU-NR800-600	NU-S700-102
NU-NTE800-600	NU-S700-102

PRE-APPROVAL NOTES:

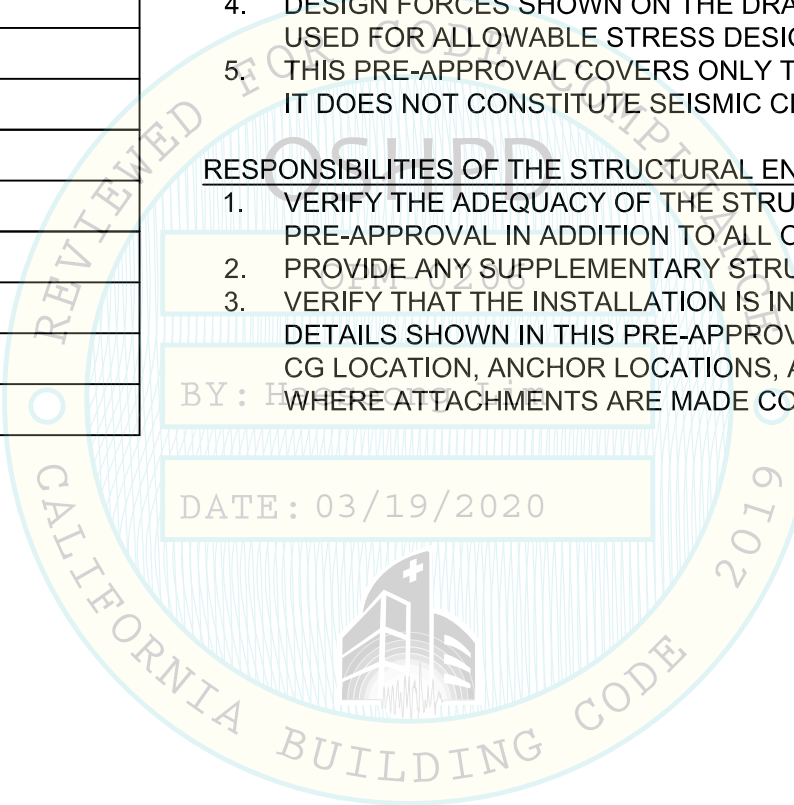
1. THIS OSHPD PREAPPROVAL OF MANUFACTURER'S CERTIFICATION (OPM) IS BASED ON CBC 2019. THE DEMAND (DESIGN FORCES) FOR USE WITH THIS OPM SHALL BE BASED ON THE CBC 2019.
2. FORCES PER ASCE 7-16 SECTION 13.3.1, EQUATIONS 13.3-1, 13.3-2 AND 13.3-3, WHERE: $S_{DS} = 2.0$, $a_p = 1.0$, AND $R_p = 2.5$. (FORCE LEVEL FOR E_h & E_v IS ASD) HORIZONTAL FORCE (E_h) = $1.00W_p$, VERTICAL FORCE (E_v) = $0.28W_p$.
3. THE DETAILS IN THIS PRE-APPROVAL ARE APPLICABLE TO ANY LOCATION IN THE STATE OF CALIFORNIA WHERE S_{DS} IS NOT GREATER THAN 2.0. THE DETAILS WERE DEVELOPED USING $h=z$ AND MAY BE USED AT ANY HEIGHT IN THE BUILDING WHERE $z/h \leq 1.0$.
4. DESIGN FORCES SHOWN ON THE DRAWINGS ARE BASED ON WORKING STRESS LOADS AND MAY BE USED FOR ALLOWABLE STRESS DESIGN.
5. THIS PRE-APPROVAL COVERS ONLY THE ATTACHMENT OF THE UNIT TO THE STRUCTURE. IT DOES NOT CONSTITUTE SEISMIC CERTIFICATION OF THE EQUIPMENT.

RESPONSIBILITIES OF THE STRUCTURAL ENGINEER OF RECORD:

1. VERIFY THE ADEQUACY OF THE STRUCTURE TO SUPPORT THE WEIGHT AND FORCES SHOWN IN THIS PRE-APPROVAL IN ADDITION TO ALL OTHER WEIGHTS AND FORCES THAT ARE IMPOSED ON IT.
2. PROVIDE ANY SUPPLEMENTARY STRUCTURE REQUIRED FOR STRENGTH AND STABILITY.
3. VERIFY THAT THE INSTALLATION IS IN CONFORMANCE WITH THE 2019 CBC AND WITH THE NOTES AND DETAILS SHOWN IN THIS PRE-APPROVAL. VERIFY THAT THE EQUIPMENT'S ACTUAL WEIGHT, CG LOCATION, ANCHOR LOCATIONS, ANCHOR DETAILS AND THE MATERIAL AND GAGE OF THE UNIT WHERE ATTACHMENTS ARE MADE CONFORM WITH THE INFORMATION SHOWN IN THIS PRE-APPROVAL.

BY: H

DATE: 03/19/2020



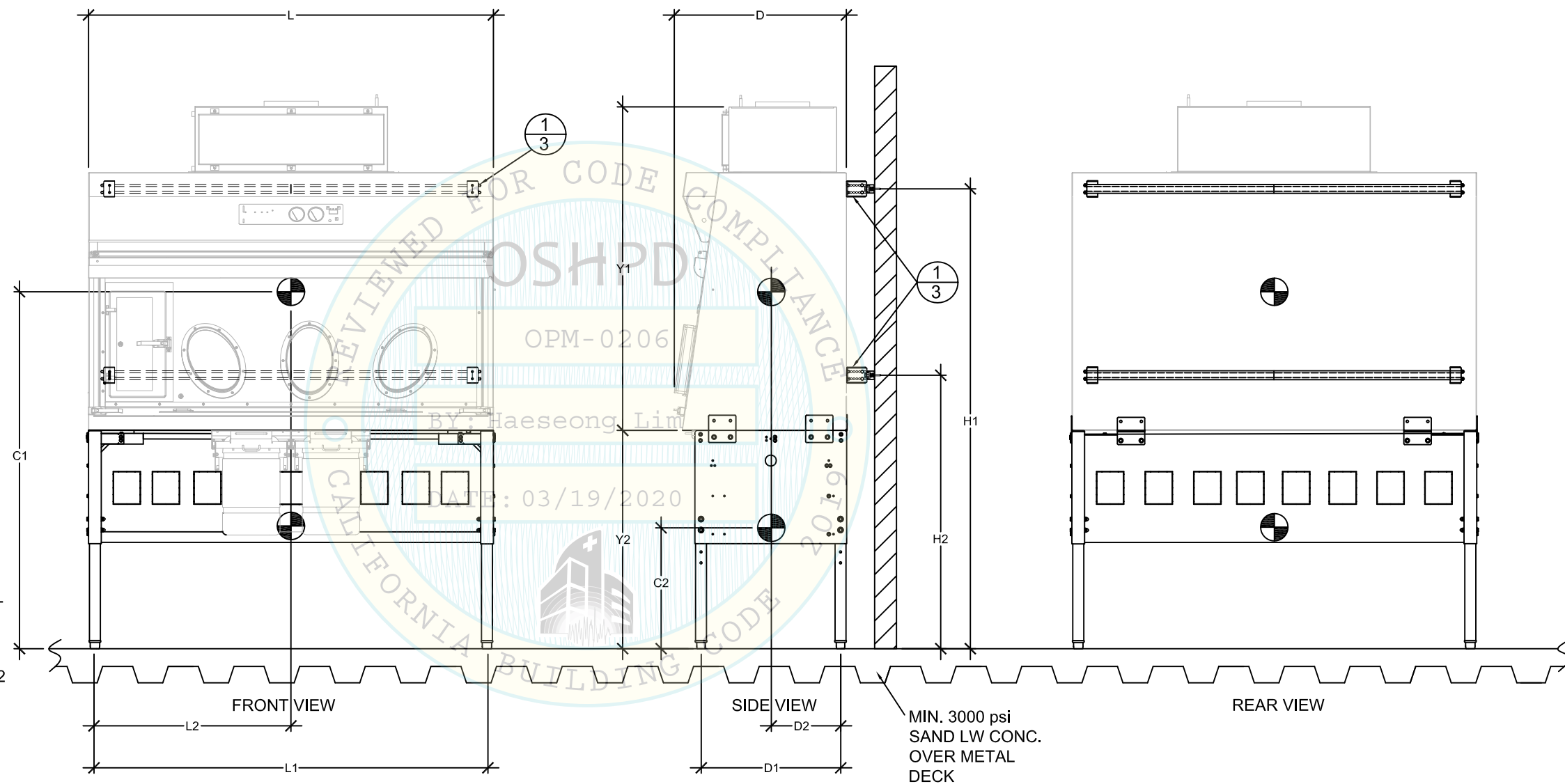
LTK ASSOCIATES Incorporated
Structural Engineers
 745 Distel Drive
 Los Altos, CA 94022
 (650) 967-8465
 ltk@ltkse.com

SUPPORTS AND ATTACHMENTS DETAILS (WALL MOUNT) COMPOUNDING ISOLATOR					
DFTM	LS	02/29/20	CHKD	BP	SHEET 1 OF 6
DRAWING NUMBER		BCD-19634		A	

Compounding Isolator Data			
Model no.	HOOD = W1 (lb)	CONTENT = W2 (lb)	STAND = W3 (lb)
NU-PR/NR/NTE797/800-400	465	100	150 (NU-700-101)
NU-PR/NR/NTE797/800-600	615	100	160 (NU-700-102)

DIMENSIONS												
Model no.	C1	C2	D	D1	D2	L	L1	L2	H1	H2	Y1	Y2
NU-PR/NR/NTE797/800-400	68.25	15.00	32.50	26.00	12.75	50.00	48.00	24.00	83.40	50.00	59.00	40.00
NU-PR/NR/NTE797/800-600	68.25	15.00	32.50	26.00	12.75	74.00	72.00	36.00	83.40	50.00	59.00	40.00

SEE NOTE 3 BELOW



NOTE:
IF ISOLATOR IS USED FOR PHARMACY APPLICATION, WALL MOUNT BRACKETS MUST BE ENCLOSED ON TOP AND SIDES FOR CLEANING PURPOSES, SUBJECT TO THE APPROVAL BY THE CA BOARD OF PHARMACY PRIOR TO INSTALLATION.

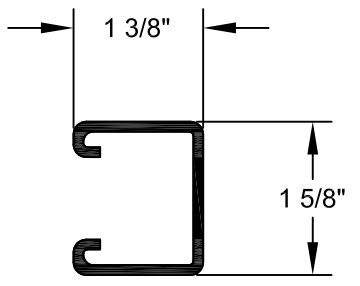
- NOTE:
- SEE ALL NOTES SHEET 1 OF 6.
 - FOR ANCHOR SCHEDULE AND SUPPORTS & ATTACHMENTS DETAILS, SEE SHEET 3 OF 6.
 - THE "H" DIMENSIONS SHOWN ABOVE ARE BASED ON MAXIMUM BASE STAND HEIGHTS, WITH OTHER BASE STAND HEIGHTS, THE WALL BRACKET LOCATIONS SHALL BE LOCATED APPROPRIATELY.



LTK ASSOCIATES
Incorporated

Structural Engineers
745 Distel Drive
Los Altos, CA 94022
(650) 967-8465
ltk@ltkse.com

SUPPORTS AND ATTACHMENTS DETAILS (WALL MOUNT) COMPOUNDING ISOLATOR					
DFTM	LS	03/29/19	CHKD	BP	SHEET 2 OF 6
DRAWING NUMBER		BCD-19634		A	



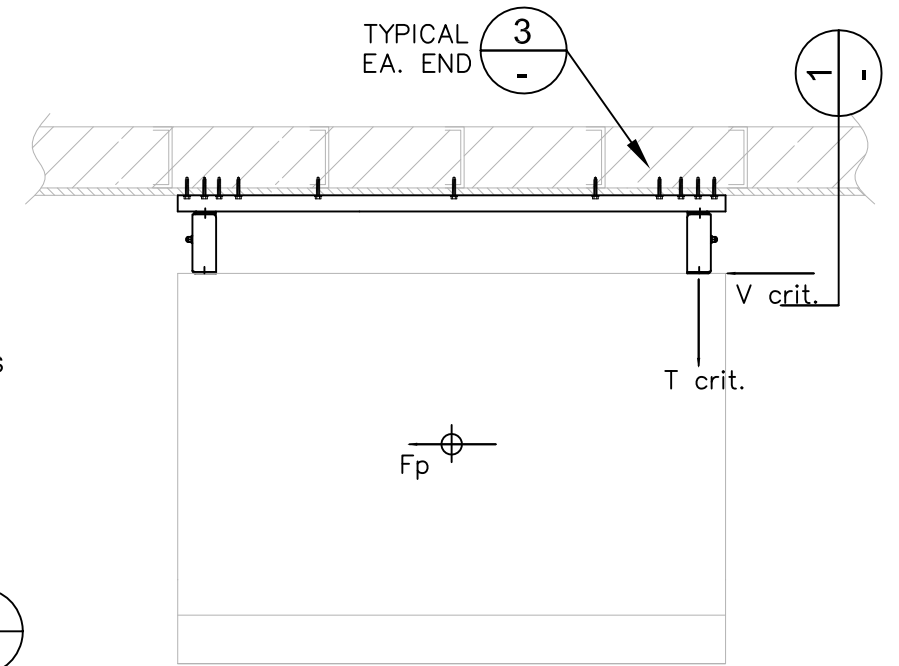
12ga STRUT (PLAIN-ASTM A1011, SS, GRADE 33, POWDER COATED) SOLID (NO HOLES)
 MIN. STRUT CHANNEL PROPERTIES:
 Wt. = 1.7 lb/ft A = 0.50 sq. in.
 Sxx = 0.156 Syy = 0.255
 rx = 0.493 ry = 0.643
 lxx = 0.122 lyy = 0.207

NUAIRE 12GA. (ASTM A240 TYPE 304) SEISMIC BRACKET SYSTEM AT CABINET BACK PANEL (UNISTRUT BRACKET / CABINET BRACKET)
 (2) 1/4-20 X 3/4" SST (AISI TYPE 304) BOLT HEX NUT AND LOCK WASHER

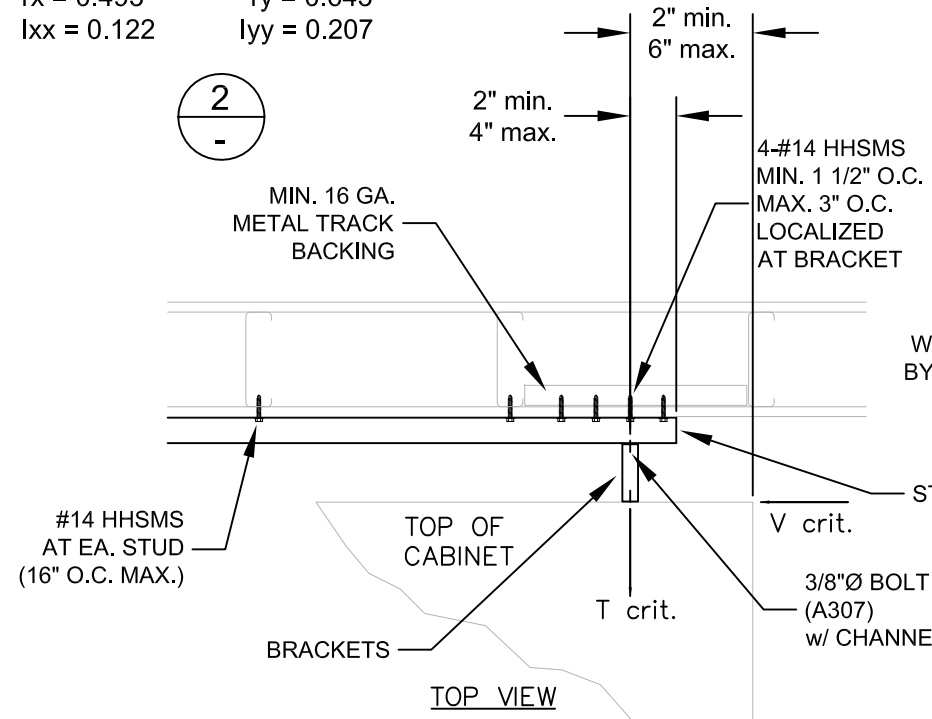
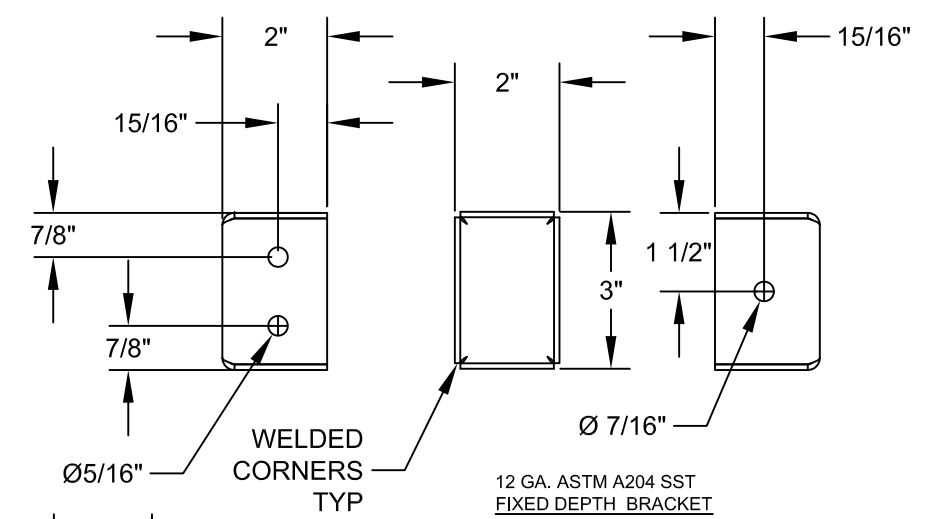
1/4" - 14 X 1-1/2 TEKS SELF-DRILLING SCREWS FOR SPACING SEE DETAIL

MIN. 16GA. (50KSI) BACKING OR METAL STUDS BY SEOR

HORIZONTAL UNISTRUT P3000 (MIN.) ONE LENGTH NOT TO EXTEND BEYOND SIDES OF UNIT, SEE



TOP PLAN



TOP VIEW

4-#14 HHSMS MIN. 1 1/2" O.C. MAX. 3" O.C. LOCALIZED AT BRACKET
 1/4-20 THREADED STUDS (AISI TYPE 304) CAPACITOR DISCHARGE (CD) SHOP WELDED TO 18 GA. (ASTM A240 TYPE 304) (Fy=30ksi min.) CABINET BACK. WASHERS AND NUTS PROVIDED BY EQUIPMENT MANUFACTURER INSTALLED BY CONTRACTOR

3/8 Ø HEX HEAD M.B. & B-LINE N200 SPRING NUT AT EACH BRACKET (TORQUE TO 19 FT-LB)

3/8"Ø BOLT (A307) w/ CHANNEL NUT

#14 HHSMS AT EA. STUD (16" O.C. MAX.)

MIN. 16 GA. METAL TRACK BACKING

TOP OF CABINET

BRACKETS

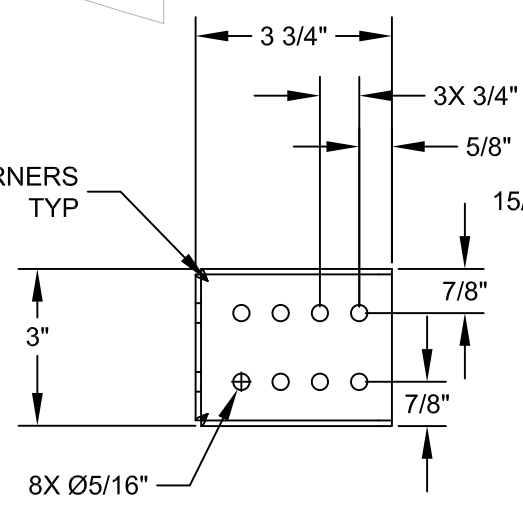
T crit.

V crit.

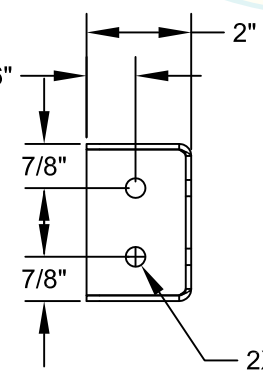
STRUT

3

WELDED CORNERS TYP



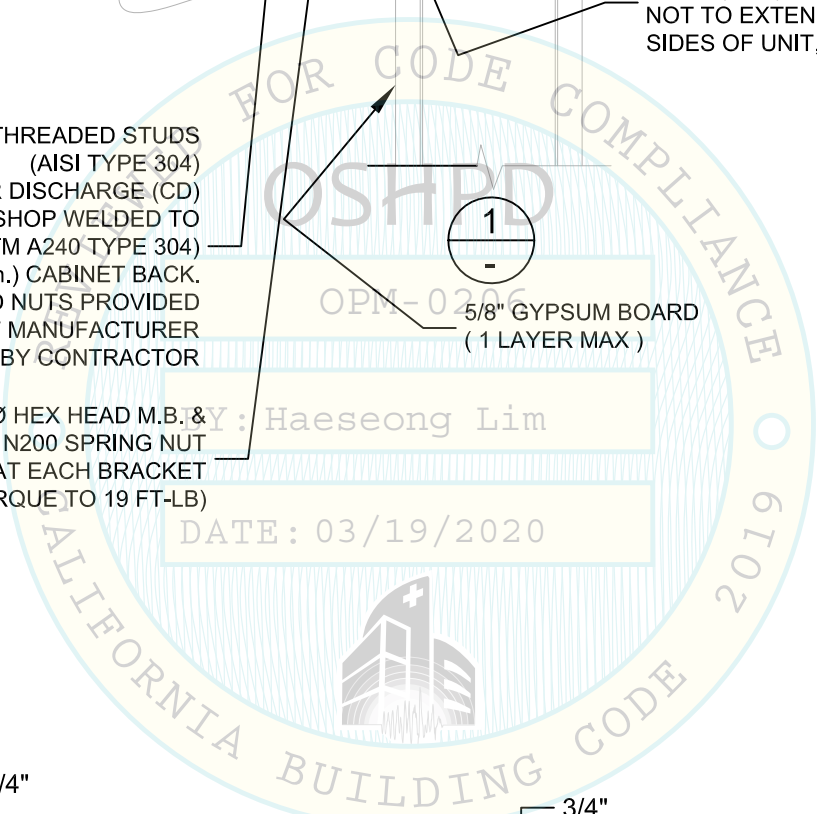
12 GA. ASTM A204 SST CABINET BRACKET



12 GA. ASTM A204 SST UNISTRUT BRACKET

WELDED CORNERS TYP

- NOTES
- SEE ALL NOTES SHEET 1 OF 6.
 - MAXIMUM CRITICAL DESIGN FORCES AT EACH CLAMP:
 Tcrit. = 361 lbs., Vcrit. = 326 lbs.
 ALL FORCES ARE ASD LEVEL.
 - SMS SHALL BE TEKS SCREWS (ICC-ES ESR-1976)



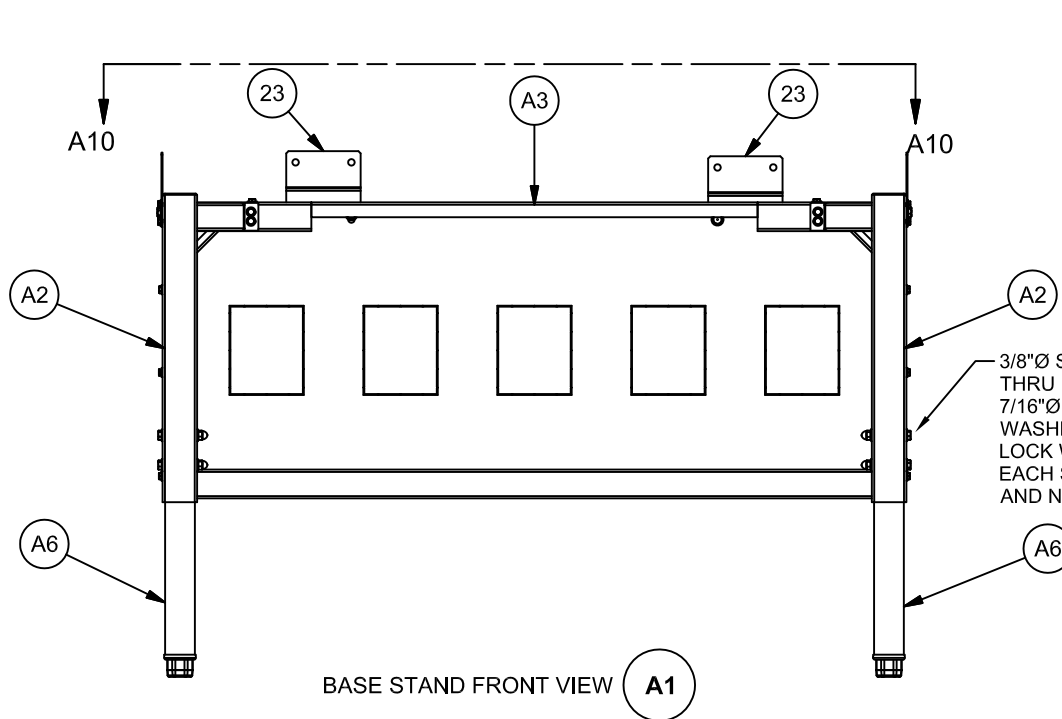
LTK ASSOCIATES Structural Engineers
 745 Distel Drive
 Los Altos, CA 94022
 (650) 967-8465
 FAX (650) 967-5148

SUPPORTS AND ATTACHMENTS DETAILS (WALL MOUNT) COMPOUNDING ISOLATOR

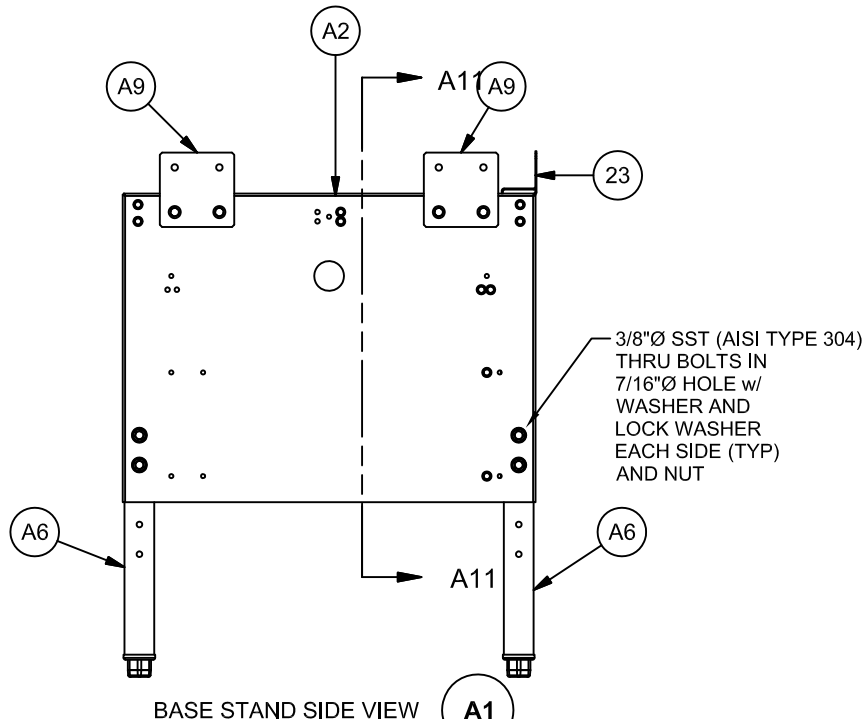
DFTM	LS	03/29/19	CHKD	BP	SHEET 3 OF 6
DRAWING NUMBER				BCD-19634	
				A	

REV	ECO	DESCRIPTION	DATE	DRFT	CHKD
-----	-----	-------------	------	------	------

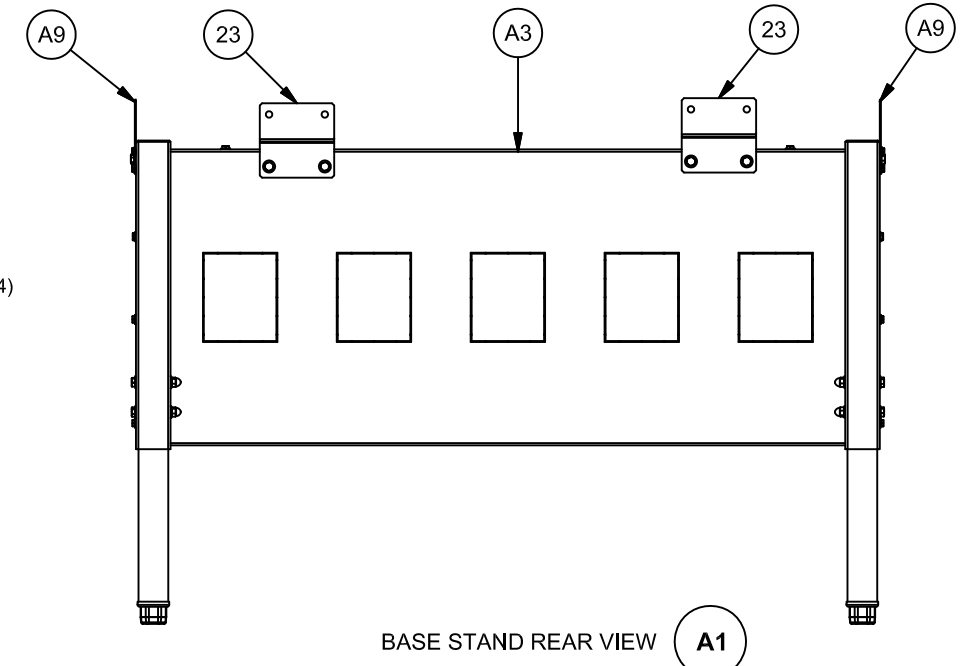
VIEW A3	
CABINET SIZE	DIM "A"
4 FT.	49 3/4 [1264]
6 FT.	73 3/4 [1873]



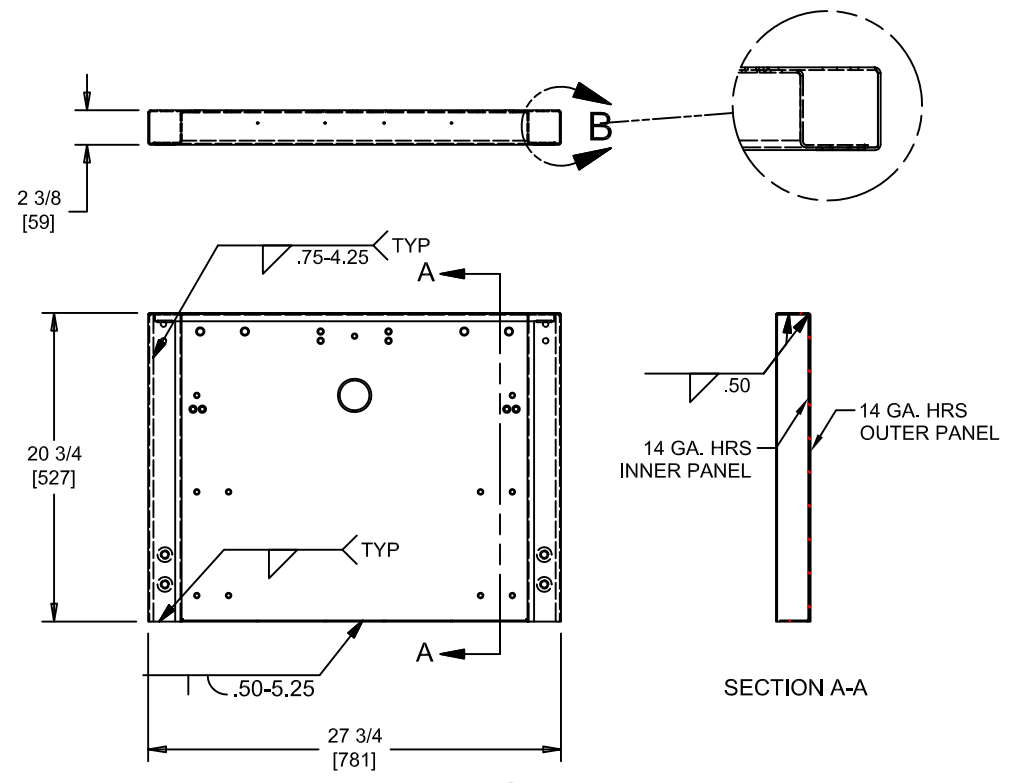
BASE STAND FRONT VIEW **A1**



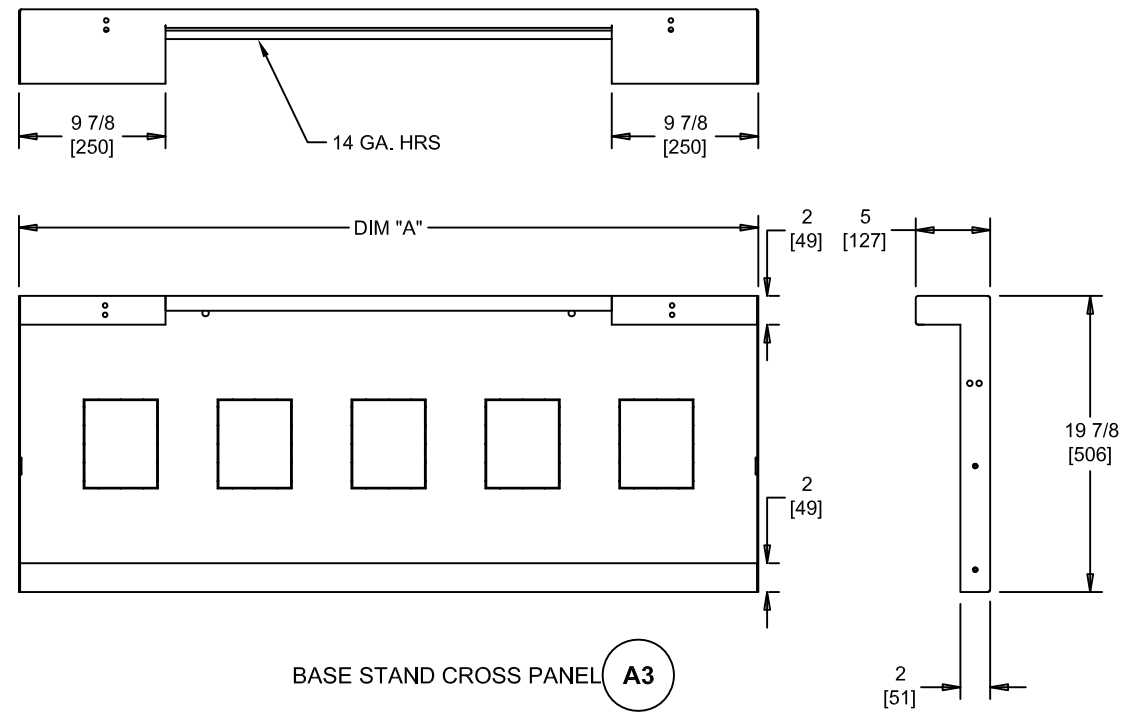
BASE STAND SIDE VIEW **A1**



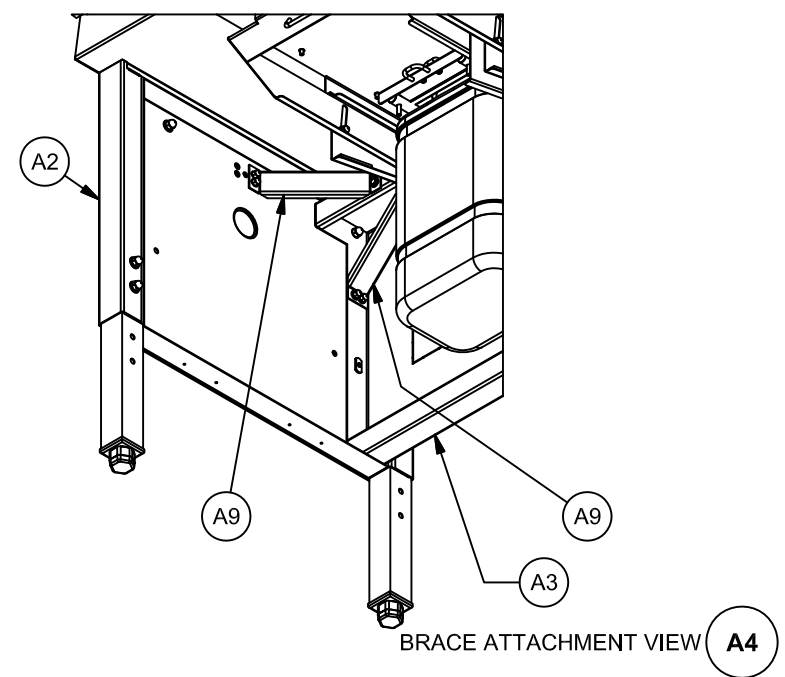
BASE STAND REAR VIEW **A1**



BASE STAND END PLATE **A2**



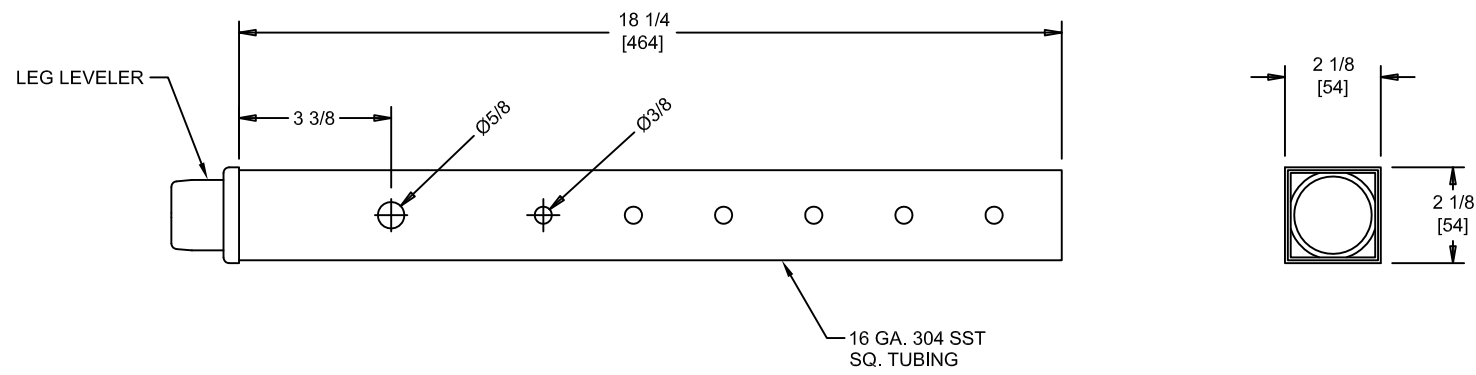
BASE STAND CROSS PANEL **A3**



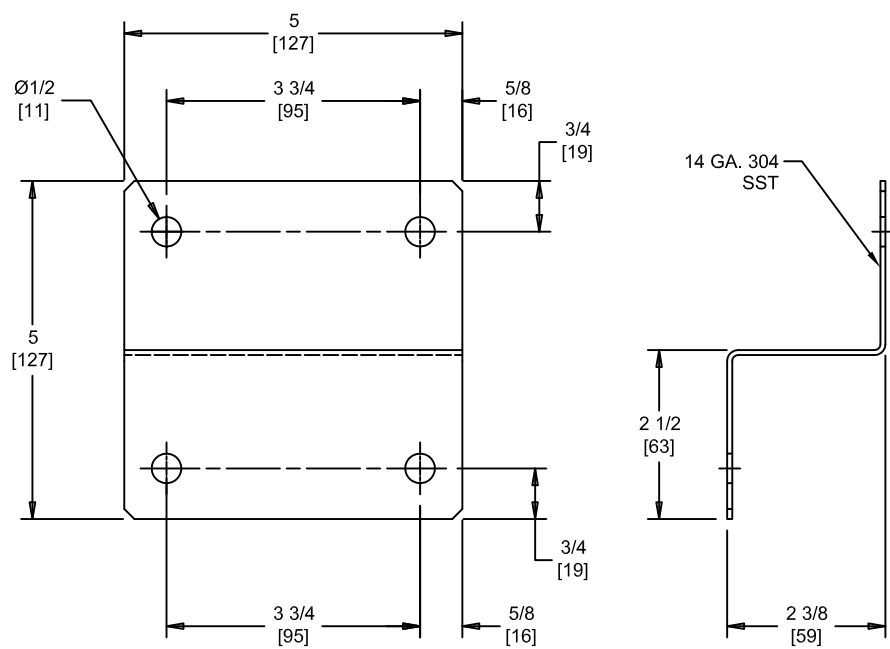
BRACE ATTACHMENT VIEW **A4**

NOTE:
 1. THIS DRAWING IS INFORMATIONAL USE ONLY. ALL BASE STAND COMPONENTS, CONNECTION HARDWARE AND WELDS ARE PROVIDED BY MANUFACTURER.
 3/19/2020

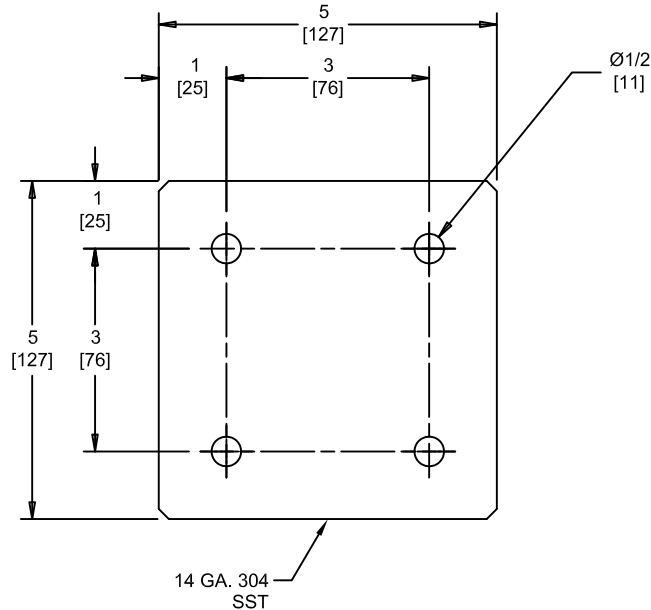
COMPOUNDING ISOLATOR TELESCOPING BASESTAND SEISMIC DETAILS					
DFTM	LS	03/29/19	CHKD	BP	SHEET 4 OF 6
DRAWING NUMBER		BCD-19634		A	



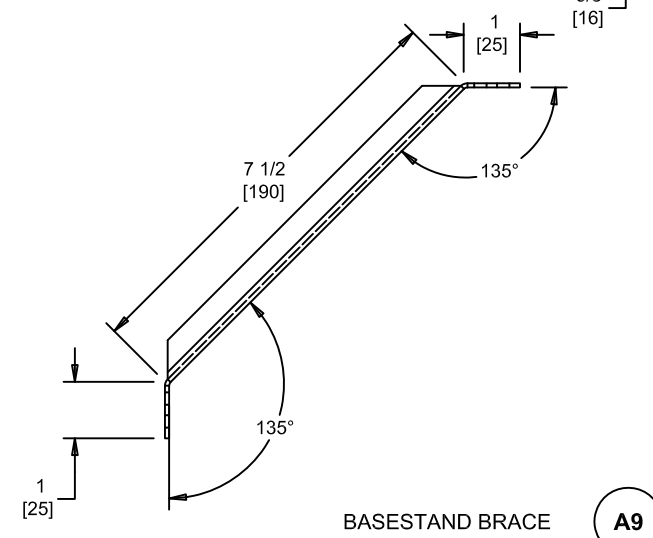
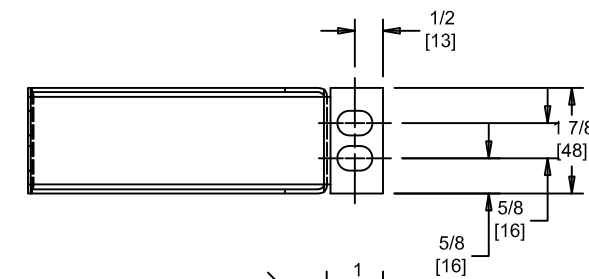
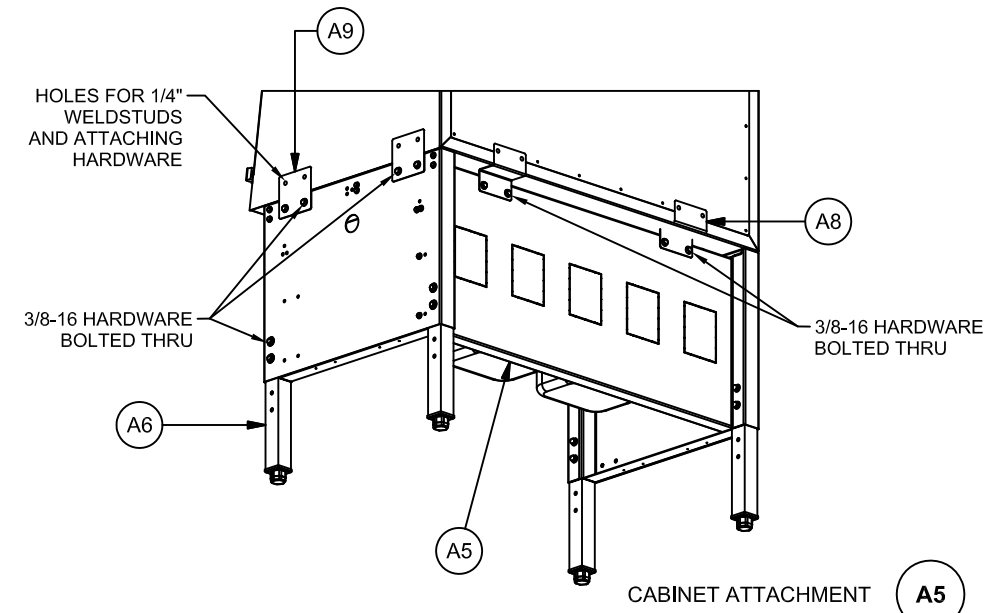
LEG EXTENSION DETAIL "A" **A6**



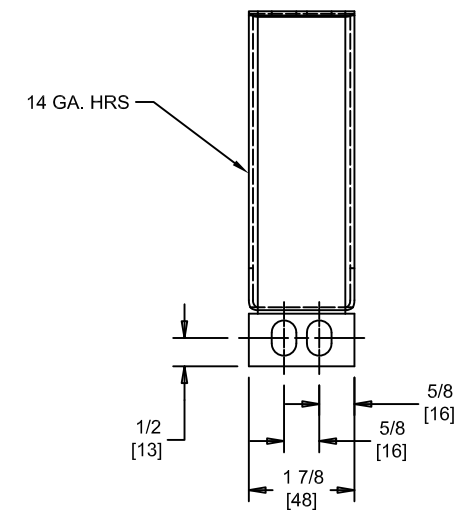
REAR SEISMIC ANGLE **A7**



SIDE SEISMIC PLATE **A8**



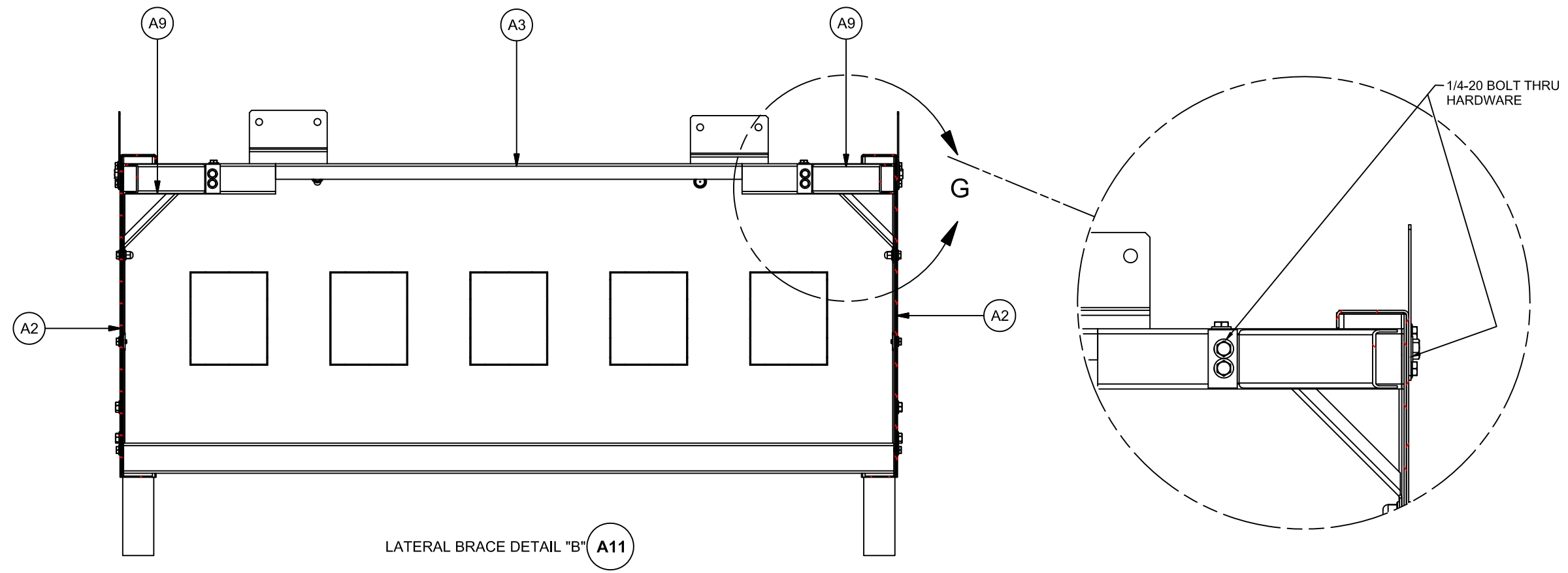
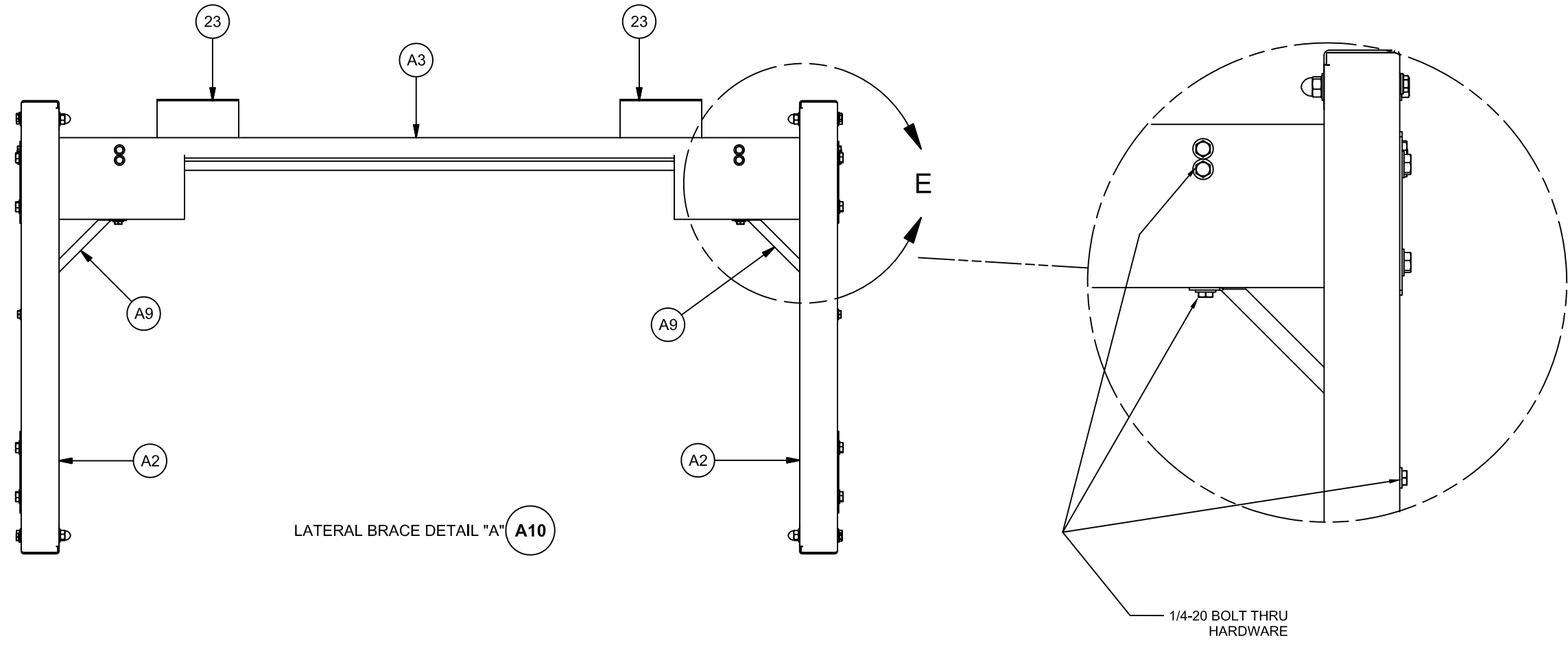
BASESTAND BRACE **A9**



COMPOUNDING ISOLATOR
TELESCOPING BASESTAND
SEISMIC DETAILS

DFTM LS 01/15/18 CHKD BP SHEET 5 OF 6

DRAWING NUMBER **BCD-19634** **A**



3/19/2020

COMPOUNDING ISOLATOR TELESCOPING BASESTAND SEISMIC DETAILS					
DFTM	LS	01/15/18	CHKD	BP	SHEET 6 OF 6
DRAWING NUMBER		BCD-19634			A