



**OFFICE OF STATEWIDE HEALTH PLANNING AND DEVELOPMENT
FACILITIES DEVELOPMENT DIVISION**

**APPLICATION FOR OSHPD PREAPPROVAL
OF MANUFACTURER'S CERTIFICATION (OPM)**

OFFICE USE ONLY	
APPLICATION #:	OPM-0265-13

OSHPD Preapproval of Manufacturer's Certification (OPM)

Type: New Renewal Update to Pre-CBC 2013 OPA Number: _____

Manufacturer Information

Manufacturer: Chatsworth Products, Inc.

Manufacturer's Technical Representative: Brandi Oldt

Mailing Address: 3004 South Austin Ave., Georgetown, TX. 78626

Telephone: (800) 834-4969 Email: BOldt@chatsworth.com

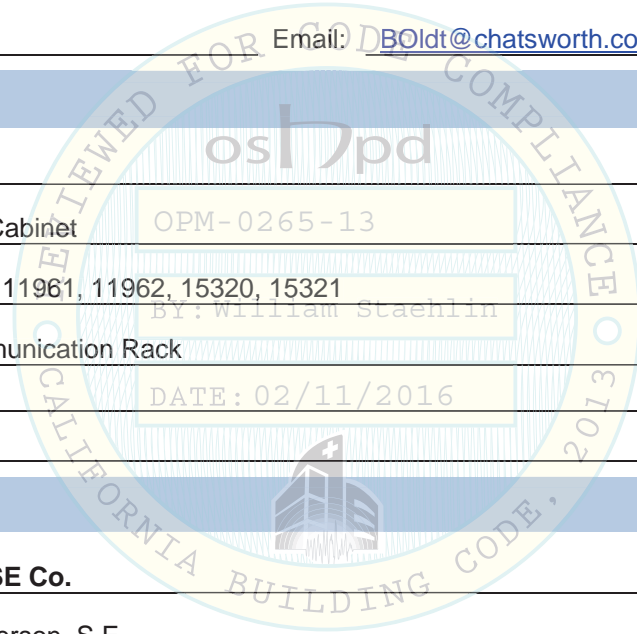
Product Information

Product Name: Fixed Rack

Product Type: Instrumentation Cabinet

Product Model Number: 11960, 11961, 11962, 15320, 15321

General Description: Telecommunication Rack



Applicant Information

Applicant Company Name: EASE Co.

Contact Person: Jonathan Roberson, S.E.

Mailing Address: 5877 Pine Ave. Suite 210, Chino Hills, CA. 91709

Telephone: (909) 606-7622 Email: J.Roberson@EASECo.com

I hereby agree to reimburse the Office of Statewide Health Planning and Development review fees in accordance with the California Administrative Code, 2013.

Signature of Applicant:  Date: 9/3/15

Title: Principal Engineer Company Name: EASE Co.

"Access to Safe, Quality Healthcare Environments that Meet California's Diverse and Dynamic Needs"





**OFFICE OF STATEWIDE HEALTH PLANNING AND DEVELOPMENT
FACILITIES DEVELOPMENT DIVISION**

Registered Design Professional Preparing Engineering Recommendations

Company Name: EASE Co.

Name: Jonathan Roberson, S.E. California License Number: S4197

Mailing Address: 5877 Pine Ave. Suite 210, Chino Hills, CA. 91709

Telephone: 909-606-7667 Email: J.Roberson@EASECo.com

OSHPD Special Seismic Certification Preapproval (OSP)

- Special Seismic Certification is preapproved under OSP- (Separate application for OSP is required)
- Special Seismic Certification is not preapproved

Certification Method(s)

- Testing in accordance with: ICC-ES AC156 FM 1950-10
- Other* (Please Specify): _____

*Use of test criteria other than those adopted by the California Building Standards Code, 2013 (CBSC 2013) for component supports and attachments are not permitted. For distribution system, interior partition wall, and suspended ceiling seismic bracings, test criteria other than those adopted in the CBSC 2013 may be used when approved by OSHPD prior to testing.

- Analysis
- Experience Data
- Combination of Testing, Analysis, and/or Experience Data (Please Specify): _____

List of Attachments Supporting the Manufacturer's Certification

- Test Report Drawings Calculations Manufacturer's Catalog
- Other(s) (Please Specify): _____

OFFICE USE ONLY – OSHPD APPROVAL VALID FOR CBC 2013 ONLY

Signature: *William Staehlin* Date: 02-11-2016

Print Name: William Staehlin

Title: SSE

Condition of Approval (if applicable): _____

"Access to Safe, Quality Healthcare Environments that Meet California's Diverse and Dynamic Needs"



**EASE****EQUIPMENT ANCHORAGE
& SEISMIC ENGINEERING**5877 Pine Ave, Ste. 210
Chino Hills, CA. 91709
Phn: (909) 606-7622Office of Statewide Health Planning and Development
PREAPPROVAL OF MANUFACTURER'S CERTIFICATION
OPM-0265-13**THIS PREAPPROVAL CONFORMS TO THE 2013 CALIFORNIA BUILDING CODE**MANUFACTURER: **CHATSWORTH PRODUCTS, INC**
EQUIPMENT NAME: **1196X & 1532X SERIES FIXED RACKS**Sheet: 1 of 9
Date: 1/21/16**GENERAL NOTES**

1. THIS OSHPD PREAPPROVAL OF MANUFACTURER'S CERTIFICATION (OPM) IS BASED ON THE 2013 CBC. THE DEMANDS (DESIGN FORCES) FOR USE WITH THIS OPM SHALL BE BASED ON THE 2013 CBC
2. THIS DOCUMENT MAY ONLY BE USED WITH THE EXPRESS WRITTEN CONSENT OF THE MANUFACTURER LISTED ABOVE FOR THE SPECIFIC PROJECT SITE AND INSTALLATION LOCATION. THIS DOCUMENT IS INVALID WITHOUT SUCH CONSENT.
3. THIS PREAPPROVAL CONFORMS TO THE 2013 CALIFORNIA BUILDING CODE.
4. FORCES PER ASCE 7-10 SECTION 13.3.1, EQUATIONS 13.3-1, 13.3-2 & 13.3-3, WHERE $S_{ds} = 2.20$, $a_p = 2.5$, $I_p = 1.5$, $R_p = 6.0$, $z/h \leq 1$.
5. THE DETAILS IN THIS PREAPPROVAL MAY BE USED AT ANY LOCATION IN THE STATE OF CALIFORNIA, WHERE S_{ds} IS NOT GREATER THAN 2.20.
6. ALL DESIGN FORCES SHOWN ON THE DRAWINGS ARE FACTORED LOADS THAT SHALL BE USED FOR STRENGTH DESIGN.
7. SHEET METAL SCREWS SHALL BE TEKS SCREWS BY ITW BUILDEX (ICC ESR-1976).
8. THIS PREAPPROVAL COVERS ONLY THE SUPPORTS AND ATTACHMENTS OF THE EQUIPMENT TO THE STRUCTURE.
9. **RESPONSIBILITIES OF THE STRUCTURAL ENGINEER OF RECORD OF THE BUILDING**
 - A. PROVIDE SUPPORTING STRUCTURE REQUIRED TO SUPPORT WEIGHTS AND FORCES SHOWN, IN ADDITION TO ALL OTHER LOADS.
 - B. VERIFY THAT THE INSTALLATION IS IN CONFORMANCE WITH THE 2013 CBC AND WITH THE DETAILS SHOWN IN THIS PREAPPROVAL. VERIFY THAT THE ACTUAL EQUIPMENT'S WEIGHT, CG LOCATION, ANCHOR LOCATIONS, ANCHOR DETAILS AND THE MATERIAL AND GAGE OF THE UNIT WHERE ATTACHMENTS ARE MADE AGREE WITH THE INFORMATION SHOWN ON THE PREAPPROVAL DOCUMENTS.
 - C. VERIFY THAT THE COMBINATION OF S_{ds} & z/h RESULT IN SEISMIC FORCES (E_h , E_v) THAT ARE NOT GREATER THAN THE VALUES ON THE DETAILS.
 - D. DESIGN BACKING BARS, STUDS, ETC. WHICH THE UNITS ARE ATTACHED TO AS NOTED ON THE DRAWINGS.



CHATSWORTH PRODUCTS, INC.

1196X SERIES FIXED RACKS

DES. **J. ROBERSON**

JOB NO. **11-1453**

DATE **1/21/16**

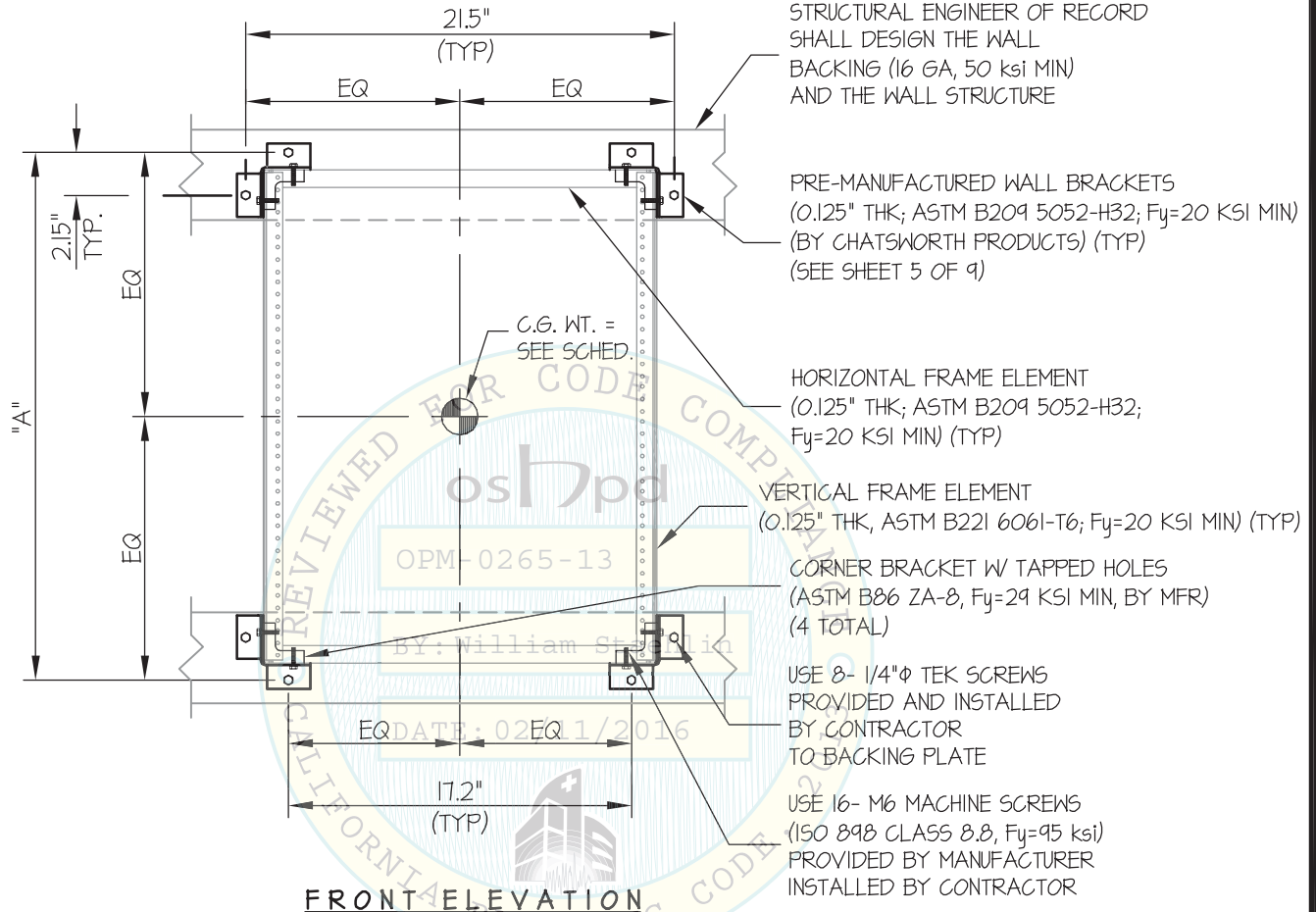
SHEET

2

OF **9** SHEETS

SEISMIC SUPPORTS & ATTACHMENTS

WALL MOUNTED



FRONT ELEVATION

(SEE SHEET 4 OF 9 FOR WEIGHT AND DIMENSIONS)

NOTES:

- FORCES ARE DETERMINED PER 2013 CALIFORNIA BUILDING CODE AND ASCE 7-10. STRENGTH DESIGN IS USED. ($S_Ds = 2.20$, $a_p = 2.5$, $I_p = 1.5$, $R_p = 6.0$, $z/h \leq 1$)

HORIZONTAL FORCE (E_h) = $1.65 W_p$

VERTICAL FORCE (E_v) = $0.44 W_p$

- CENTER OF GRAVITY (C.G.) AND WEIGHT ARE THE GOVERNING PARAMETERS FOR DESIGN. THIS PREAPPROVAL ENCOMPASSES ALL WEIGHTS UP TO THE MAXIMUM WEIGHT SHOWN.
- STRUCTURAL ENGINEER OF RECORD FOR THE BUILDING SHALL PROVIDE SUPPORT STRUCTURE DESIGNED TO SUPPORT WEIGHTS AND FORCES SHOWN IN COMBINATION WITH ALL OTHER LOADS THAT MAY BE PRESENT.
- SEE GENERAL NOTES: SHEET 1.



CHATSWORTH PRODUCTS, INC.

1196X SERIES FIXED RACKS

DES. **J. ROBERSON**

JOB NO. **11-1453**

DATE **1/21/16**

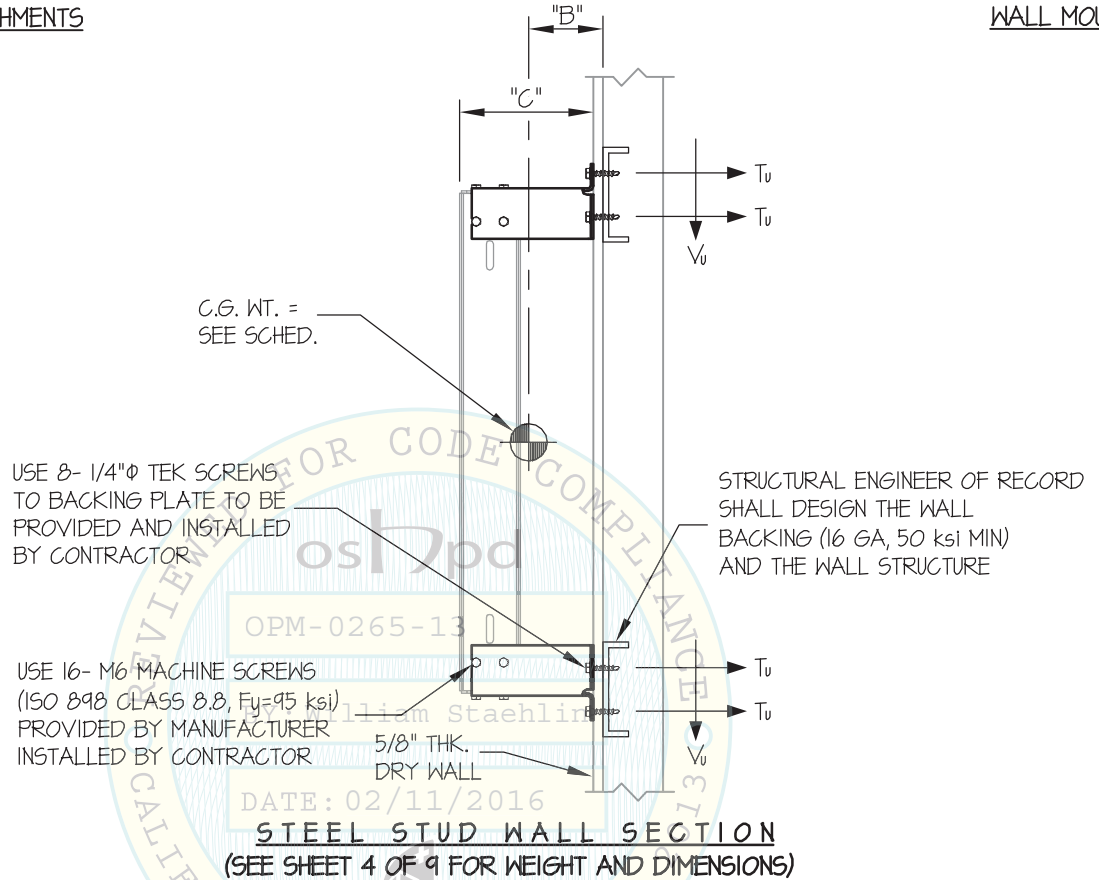
SHEET

3

OF **9** SHEETS

SEISMIC SUPPORTS & ATTACHMENTS

WALL MOUNTED



Jonathan Roberson

REGISTERED PROFESSIONAL ENGINEER
JONATHAN ROBERSON
No. 4197
EXP. 6-30-2016
1/21/16
STRUCTURAL
STATE OF CALIFORNIA

CHATSWORTH PRODUCTS, INC.

1196X SERIES FIXED RACKS

DES. **J. ROBERSON**

JOB NO. **11-1453**

DATE **1/21/16**

SHEET

4

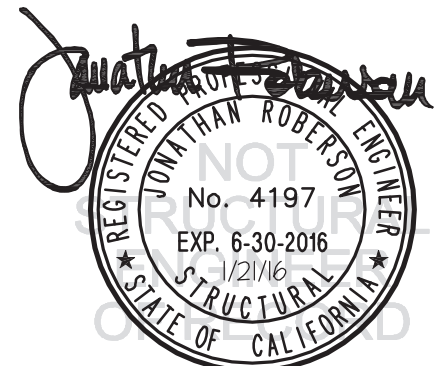
OF **9** SHEETS

SEISMIC SUPPORTS & ATTACHMENTS

WALL MOUNTED

MODELS	CAB WT.	LOAD (LB.)	"A" (in.)	"B" (in.)	"C" (in.)	* Tu (lb.)	* Vu (lb.)
11960-X06	8	208	26.5	5.125	6.6	97	60
11960-X12	9	209	26.5	9.625	12.6	172	61
11960-X18	11	211	26.5	14.125	18.6	248	61
11961-X06	10	210	40.5	5.125	6.6	86	61
11961-X12	11	211	40.5	9.625	12.6	152	61
11961-X18	12	212	40.5	14.125	18.6	217	62
11962-X06	14	214	75.5	5.125	6.6	78	62
11962-X12	15	215	75.5	9.625	12.6	135	63
11962-X18	16	216	75.5	14.125	18.6	193	63

*(VALUES DO NOT INCLUDE Ω)
CONTENT WEIGHT = 200 LB MAX
LOAD = CABINET WT + CONTENTS



CHATSWORTH PRODUCTS, INC.

1196X SERIES FIXED RACKS

DES. **J. ROBERSON**

JOB NO. **11-1453**

DATE **1/21/16**

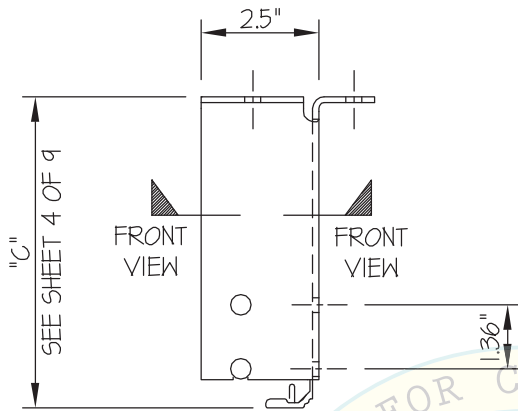
SHEET

5

OF **9** SHEETS

SEISMIC SUPPORTS & ATTACHMENTS

WALL MOUNTED



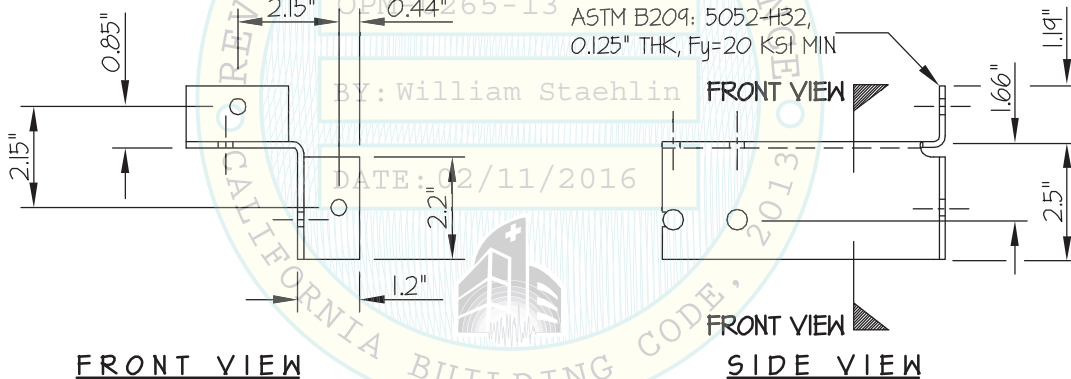
PLAN VIEW

SECTION PROPERTIES OF
 BRACKET AT FRONT VIEW

$A = 0.609 \text{ in}^2$

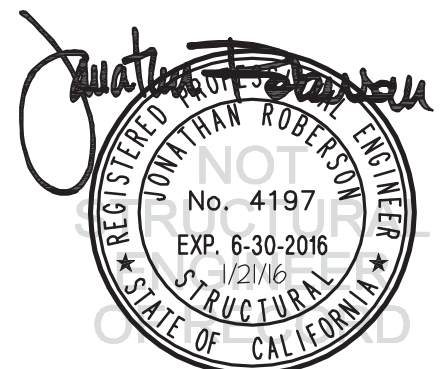
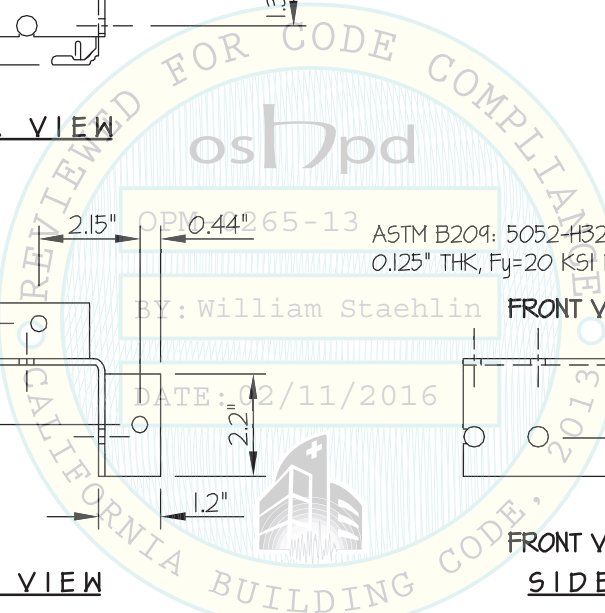
$S_x = 0.2066 \text{ in}^3$

$S_y = 0.2066 \text{ in}^3$



FRONT VIEW

FRONT VIEW
 SIDE VIEW



CHATSWORTH PRODUCTS, INC.

1532X SERIES FIXED RACKS

DES. **J. ROBERSON**

JOB NO. **11-1453**

DATE **1/21/16**

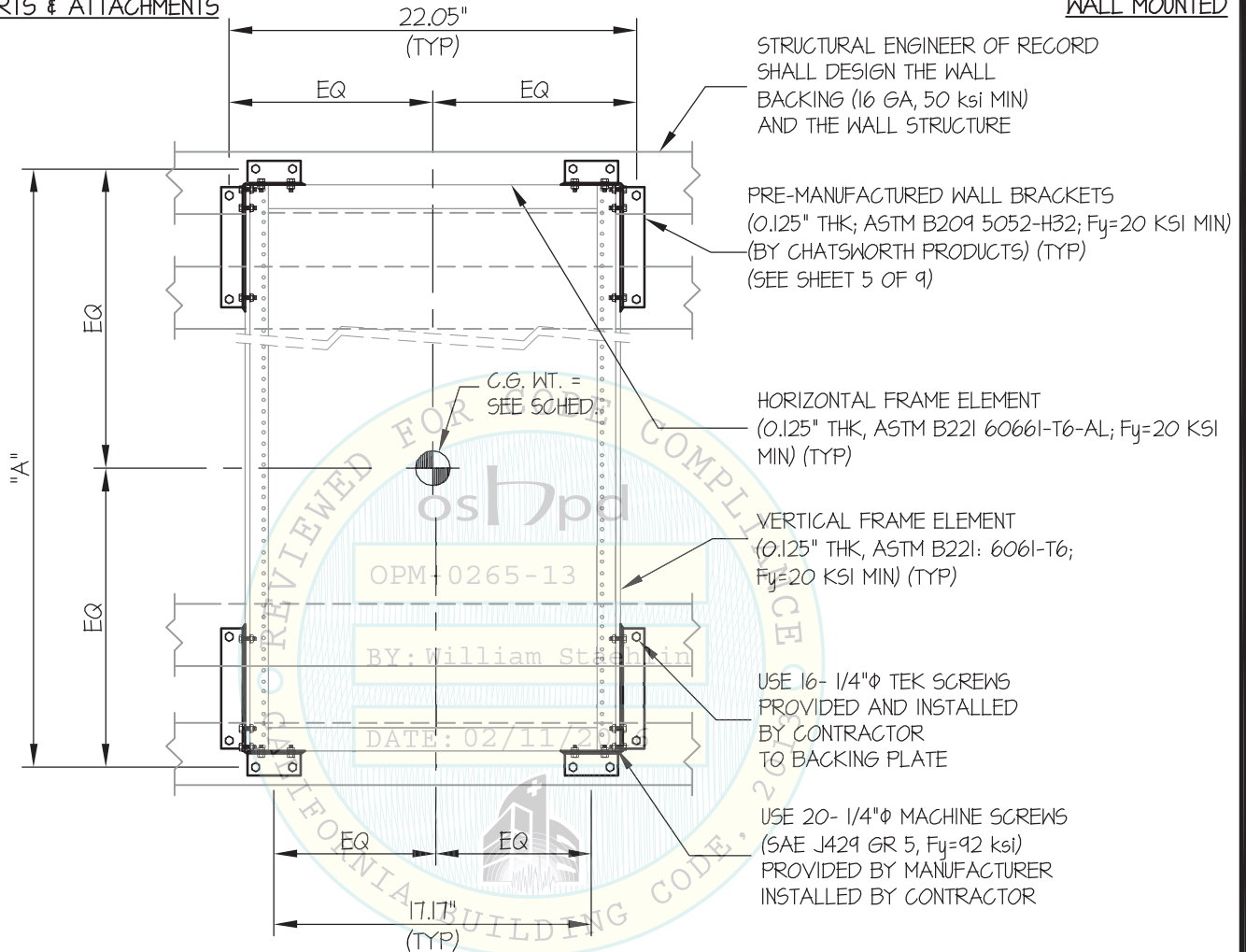
SHEET

6

OF **9** SHEETS

SEISMIC SUPPORTS & ATTACHMENTS

WALL MOUNTED



FRONT ELEVATION

(SEE SHEET 8 OF 9 FOR WEIGHT AND DIMENSIONS)

NOTES:

- FORCES ARE DETERMINED PER 2013 CALIFORNIA BUILDING CODE AND ASCE 7-10. STRENGTH DESIGN IS USED. ($S_{Ds} = 2.20$, $a_p = 2.5$, $I_p = 1.5$, $R_p = 6.0$, $z/h \leq 1$)

HORIZONTAL FORCE (E_h) = $1.65 W_p$

VERTICAL FORCE (E_v) = $0.44 W_p$

- CENTER OF GRAVITY (C.G.) AND WEIGHT ARE THE GOVERNING PARAMETERS FOR DESIGN. THIS PREAPPROVAL ENCOMPASSES ALL WEIGHTS UP TO THE MAXIMUM WEIGHT SHOWN.
- STRUCTURAL ENGINEER OF RECORD FOR THE BUILDING SHALL PROVIDE SUPPORT STRUCTURE DESIGNED TO SUPPORT WEIGHTS AND FORCES SHOWN IN COMBINATION WITH ALL OTHER LOADS THAT MAY BE PRESENT.
- SEE GENERAL NOTES: SHEET 1.



CHATSWORTH PRODUCTS, INC.

1532X SERIES FIXED RACKS

DES. **J. ROBERSON**

JOB NO. **11-1453**

DATE **1/21/16**

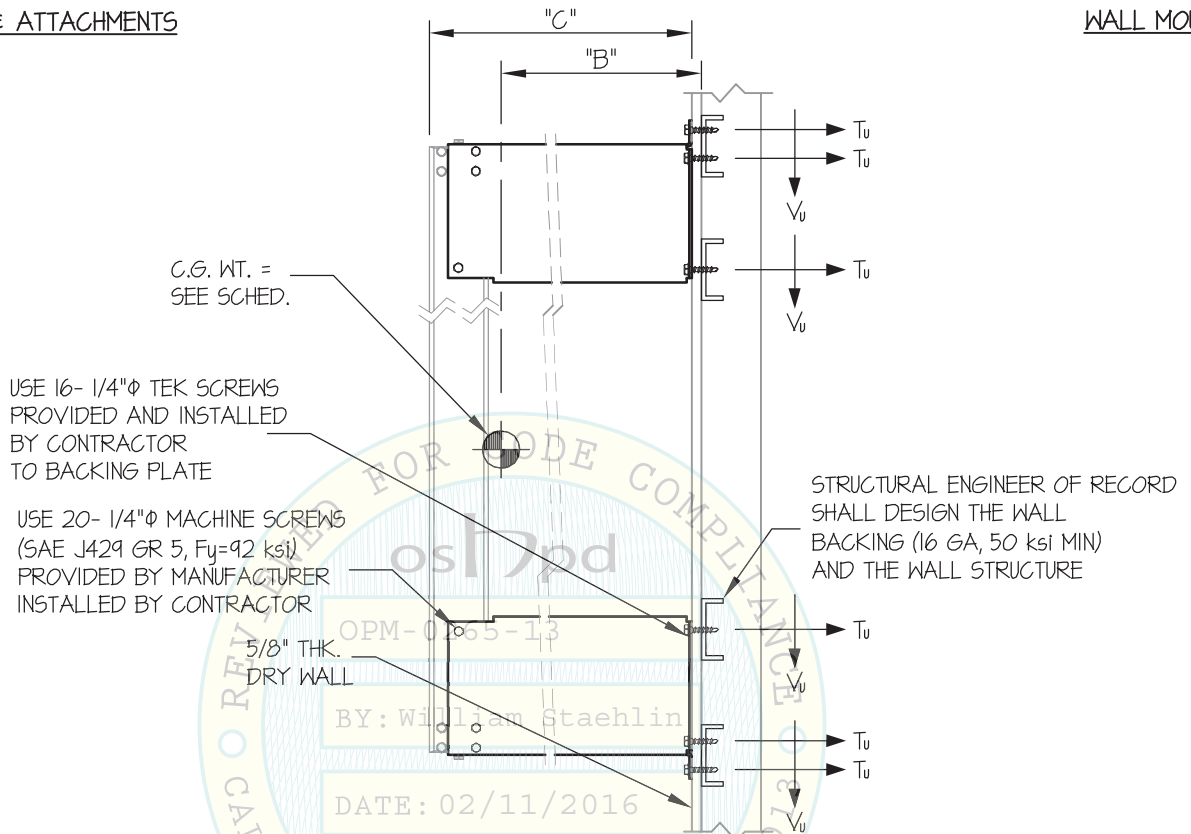
SHEET

7

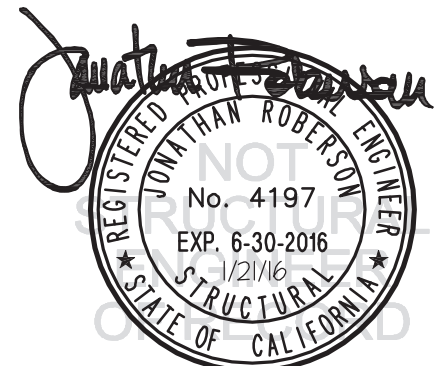
OF **9** SHEETS

SEISMIC SUPPORTS & ATTACHMENTS

WALL MOUNTED



STEEL STUD WALL SECTION
(SEE SHEET 8 OF 9 FOR WEIGHT AND DIMENSIONS)



CHATSWORTH PRODUCTS, INC.

1532X SERIES FIXED RACKS

DES. **J. ROBERSON**

JOB NO. **11-1453**

DATE **1/21/16**

SHEET

8

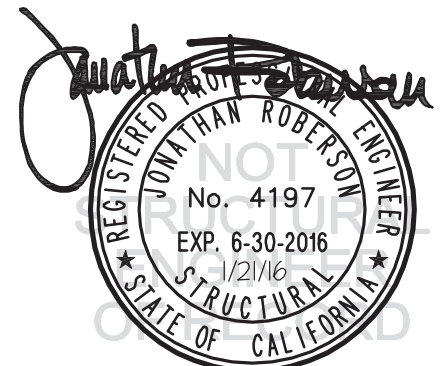
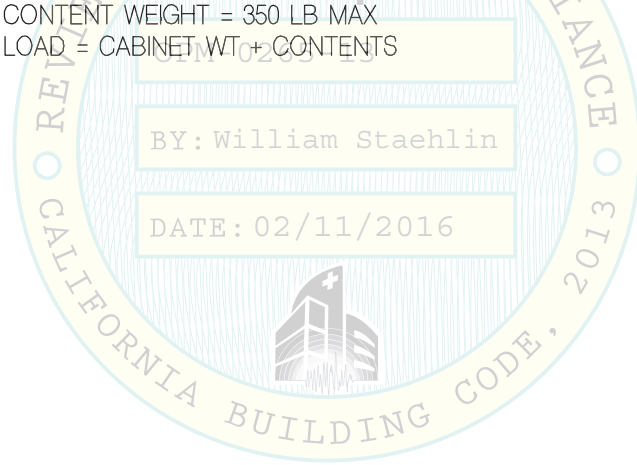
OF **9** SHEETS

SEISMIC SUPPORTS & ATTACHMENTS

BRACKET DETAILS

MODELS	CAB WT (lb.)	LOAD (LB.)	"A" (in.)	"B" (in.)	"C" (in.)	* Tu (lb.)	* Vu (lb.)
15320-X18	21	371	40.2	14.125	18	191	54
15320-X24	24	374	40.2	18.625	24	251	54
15321-X18	26	376	75.2	14.125	18	168	55
15321-X24	30	380	75.2	18.625	24	220	55

* (VALUES DO NOT INCLUDE Ω)
 CONTENT WEIGHT = 350 LB MAX
 LOAD = CABINET WT + CONTENTS



CHATSWORTH PRODUCTS, INC.

1532X SERIES FIXED RACKS

DES. J. ROBERSON

JOB NO. 11-1453

DATE 1/21/16

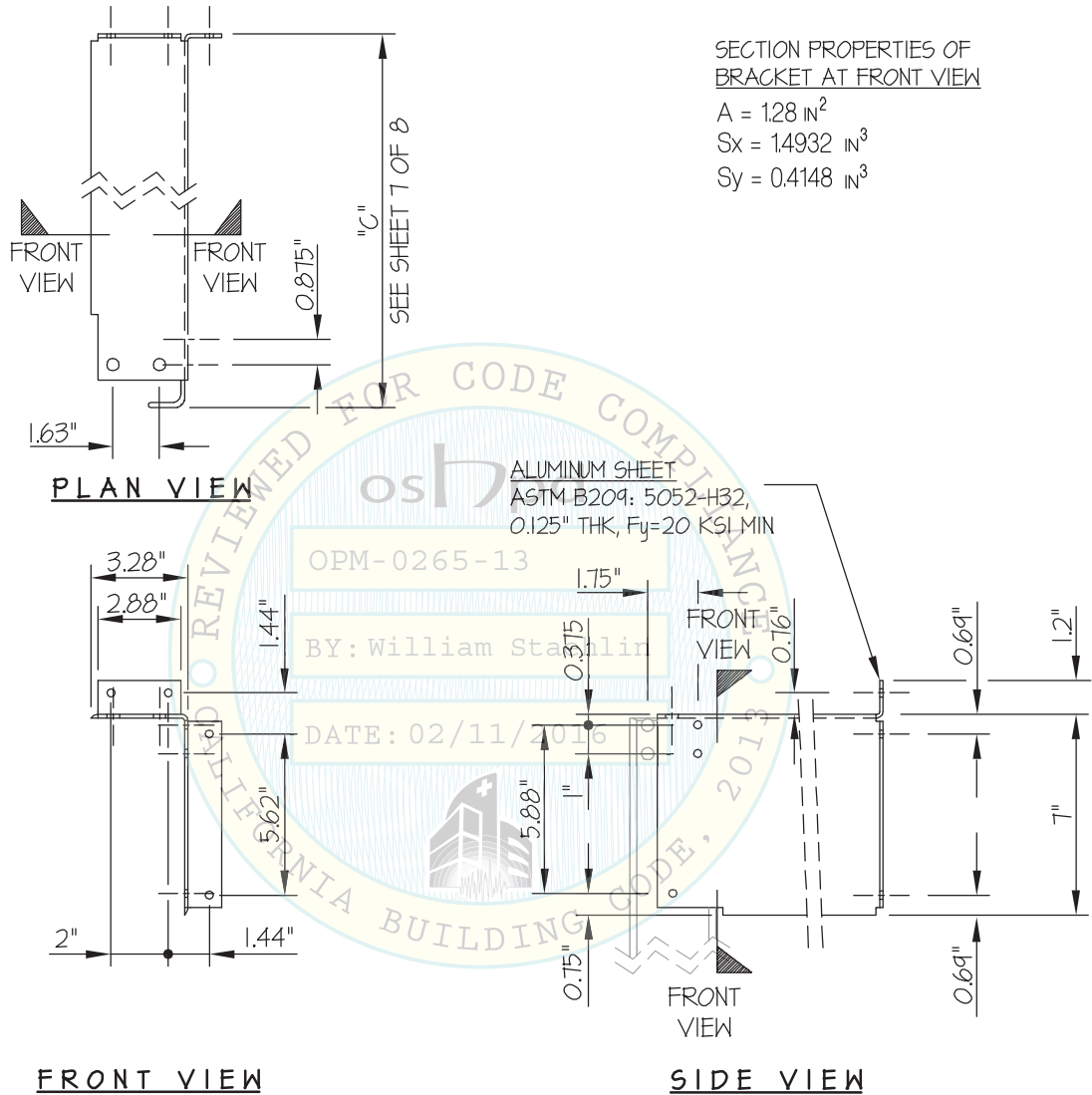
SHEET

9

OF 9 SHEETS

SEISMIC SUPPORTS & ATTACHMENTS

BRACKET DETAILS



Jonathan Roberson
REGISTERED PROFESSIONAL ENGINEER
No. 4197
EXP. 6-30-2016
1/21/16
STRUCTURAL
STATE OF CALIFORNIA