



OFFICE OF STATEWIDE HEALTH PLANNING AND DEVELOPMENT
FACILITIES DEVELOPMENT DIVISION

APPLICATION FOR OSHPD PREAPPROVAL
OF MANUFACTURER'S CERTIFICATION (OPM)

OFFICE USE ONLY
APPLICATION #: OPM-0285-13

OSHPD Preapproval of Manufacturer's Certification (OPM)

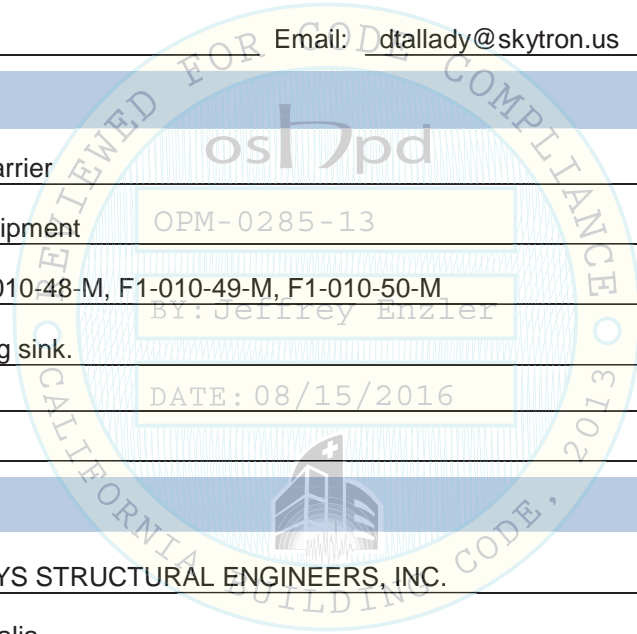
Type: [X] New [] Renewal [] Update to Pre-CBC 2013 OPA Number:

Manufacturer Information

Manufacturer: Skytron
Manufacturer's Technical Representative: Dale Tallady
Mailing Address: P.O. Box 888615, Grand Rapids, MI 49512
Telephone: (800) 759-8766 Email: dtallady@skytron.us

Product Information

Product Name: In Wall Sink Carrier
Product Type: Laboratory Equipment
Product Model Number: F1-010-48-M, F1-010-49-M, F1-010-50-M
General Description: Wall hung sink.



Applicant Information

Applicant Company Name: CYS STRUCTURAL ENGINEERS, INC.
Contact Person: David M. Calia
Mailing Address: 2495 Natomas Park Drive, Suite 650, Sacramento, CA 95833
Telephone: 916-920-2020 Email: davidc@cyseng.com

I hereby agree to reimburse the Office of Statewide Health Planning and Development review fees in accordance with the California Administrative Code, 2013.

Signature of Applicant: David M. Calia Date: 11/11/2015

Title: V.P. of Business Development & Marketing Company Name: CYS Structural Engineers, Inc.

"Access to Safe, Quality Healthcare Environments that Meet California's Diverse and Dynamic Needs"





**OFFICE OF STATEWIDE HEALTH PLANNING AND DEVELOPMENT
FACILITIES DEVELOPMENT DIVISION**

Registered Design Professional Preparing Engineering Recommendations

Company Name: CYS STRUCTURAL ENGINEERS, INC.

Name: David M. Calia California License Number: S5614

Mailing Address: 2495 Natomas Park Drive, Suite 650, Sacramento, CA 95833

Telephone: 916-920-2020 Email: davidc@cyseng.com

OSHPD Special Seismic Certification Preapproval (OSP)

- Special Seismic Certification is preapproved under OSP-
(Separate application for OSP is required)
- Special Seismic Certification is not preapproved

Certification Method(s)

- Testing in accordance with: ICC-ES AC156 FM 1950-10
- Other* (Please Specify): _____

*Use of criteria other than those adopted by the California Building Standards Code, 2013 (CBSC 2013) for component supports and attachments are not permitted. For distribution system, interior partition wall, and suspended ceiling seismic bracings, test criteria other than those adopted in the CBSC 2013 may be used when approved by OSHPD prior to testing.

- Analysis
- Experience Data
- Combination of Testing, Analysis, and/or Experience Data (Please Specify): _____

List of Attachments Supporting the Manufacturer's Certification

- Test Report Drawings Calculations Manufacturer's Catalog
- Other(s) (Please Specify): _____

OFFICE USE ONLY – OSHPD APPROVAL VALID FOR CBC 2013 ONLY

Signature: *Jeffrey Enzler* Date: 08-15-2016

Print Name: Jeffrey Enzler

Title: DSE

Condition of Approval (if applicable): _____

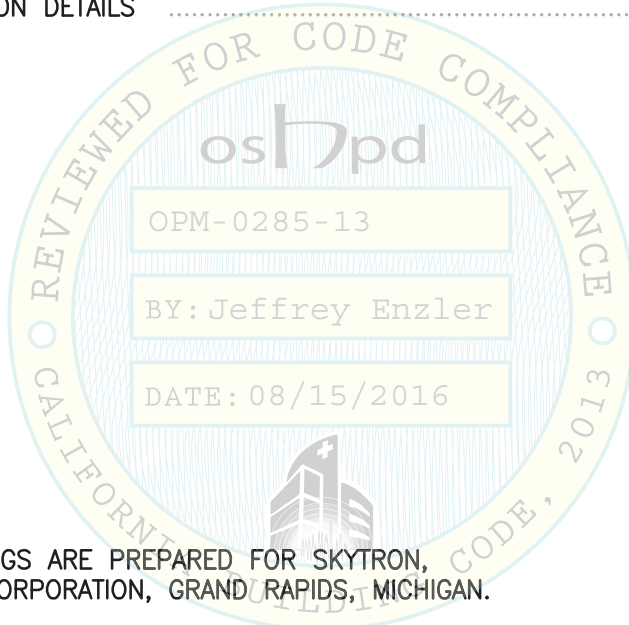
"Access to Safe, Quality Healthcare Environments that Meet California's Diverse and Dynamic Needs"





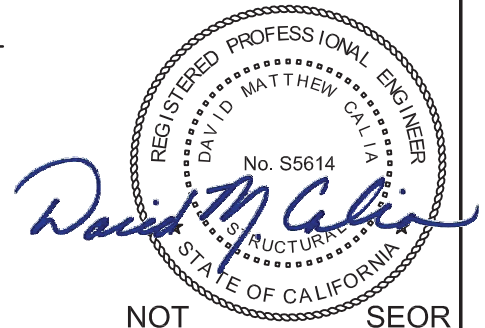
SCRUB SINK
SKYTRON
OPM-0285-13

	PAGE
GENERAL INFORMATION	
TABLE OF CONTENTS	1
GENERAL NOTES	2
DESIGN CRITERIA	3
ABBREVIATIONS	4
SCRUB SINK DIMENSION DRAWINGS	
SCRUB SINK DIMENSIONS & PROPERTIES SCHEDULE	5-6
SINGLE SCRUB SINK	7-8
DOUBLE SCRUB SINK	9-10
TRIPLE SCRUB SINK	11-12
SCRUB SINK CONNECTION DETAILS	13-17



NOTES: THESE DRAWINGS ARE PREPARED FOR SKYTRON, A MICHIGAN CORPORATION, GRAND RAPIDS, MICHIGAN.

1. THE CONTRACTOR & THE INSPECTOR OF RECORD SHALL OBTAIN A COPY OF THIS PRE-APPROVAL FROM THE OSHPD WEBSITE.
2. THIS PRE-APPROVAL COVERS THE ATTACHMENTS & SUPPORT OF THE SCRUB SINKS TO THE STRUCTURE.



NOT SEOR

SHEET TITLE: SHEET INDEX



CYS STRUCTURAL ENGINEERS, INC.

2495 NATOMAS PARK DRIVE, SUITE 650
SACRAMENTO, CA 95833

TEL (916) 920-2020
www.cyseng.com

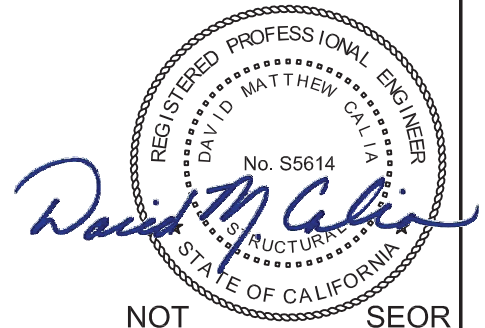
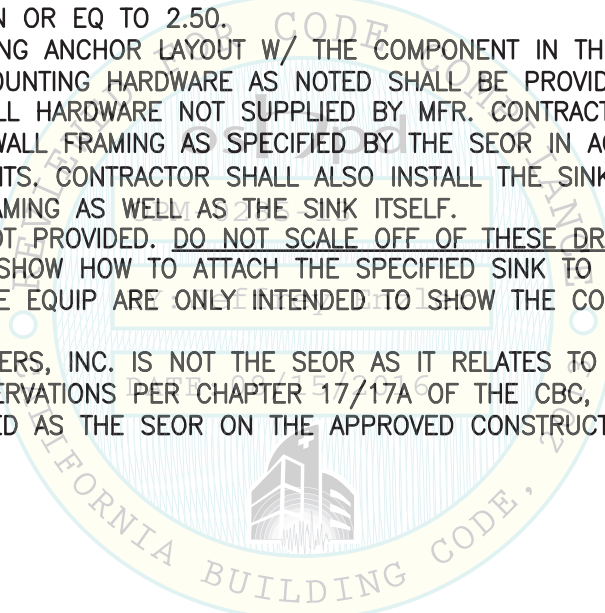
Job No:	15085
Date:	05/24/2016
Page:	1 of 18

L:\Jobs15\15085 MAC Medical - Sink & Chair Rail System\ACAD\STRU\S1_Skytron.dwg Time:Jul27,2016-02:01pm Login:mayerhoferm DimScale:8 LTScale:8



GENERAL NOTES:

1. THIS OSHPD PRE-APPROVAL OF MFR'S CERTIFICATION (OPM) IS BASED ON THE CBC 2013. THE DEMAND (DESIGN FORCES) FOR USE W/ THIS OPM SHALL BE BASED ON THE CBC 2013.
2. THIS OPM PROVIDES SUPPORTS & ATTACHMENT DESIGN & INFORMATION FOR INCORPORATION INTO A CONSTRUCTION DOCUMENT SUBMITTAL TO BE PREPARED BY A REGISTERED DESIGN PROFESSIONAL APPROPRIATELY LICENSED TO DO SO IN THE STATE OF CALIFORNIA & WHOM SHALL FURNISH THE SUBMITTAL TO THE CODE-ENFORCEMENT OFFICIAL FOR APPROVAL & PERMITTING PRIOR TO THE COMMENCEMENT OF CONSTRUCTION.
3. IT IS THE RESPONSIBILITY OF THE SEOR FOR A SITE SPECIFIC PROJECT TO VERIFY:
 - A. THE ADEQUACY OF THE NEW OR EXISTING STRUCTURE TO RESIST THE FORCES & WT SPECIFIED FOR EA COMPONENT IN ADDITION TO ALL OTHER LOADS. PROVIDE & DESIGN SUPPLEMENTARY MEMBERS AS REQ.
 - B. THAT THE INSTALLATION IS IN CONFORMANCE W/ THE 2013 CBC & W/ THE DTLS SHOWN IN THIS PRE-APPROVAL.
 - C. THAT THE SINK'S WT, CG LOCATION & ATTACHMENT HT TO THE MTL STUD WALL FRAMING AGREE W/ THE INFORMATION SHOWN ON THE PRE-APPROVAL DOCUMENTS.
4. THIS PRE-APPROVAL MAY BE USED AT ANY GEOGRAPHICAL LOCATION IN THE STATE OF CALIFORNIA. WHERE S_{DS} IS LESS THAN OR EQ TO 2.50.
5. COORDINATE THE MOUNTING ANCHOR LAYOUT W/ THE COMPONENT IN THE FIELD.
6. SINK COMPONENTS & MOUNTING HARDWARE AS NOTED SHALL BE PROVIDED BY MFR. CONTRACTOR SHALL FURNISH & INSTALL HARDWARE NOT SUPPLIED BY MFR. CONTRACTOR SHALL FURNISH & INSTALL THE MTL STUD WALL FRAMING AS SPECIFIED BY THE SEOR IN ACCORDANCE W/ THESE PRE-APPROVAL DOCUMENTS. CONTRACTOR SHALL ALSO INSTALL THE SINK'S MOUNTING HARDWARE TO THE MTL STUD WALL FRAMING AS WELL AS THE SINK ITSELF.
7. DRAWING SCALES ARE NOT PROVIDED. DO NOT SCALE OFF OF THESE DRAWINGS. THE INTENT OF THESE DRAWINGS IS TO SHOW HOW TO ATTACH THE SPECIFIED SINK TO THE WALL STRUCTURE. THE REPRESENTATIONS OF THE EQUIP ARE ONLY INTENDED TO SHOW THE COORDINATION W/ THE ATTACHMENTS.
8. CYS STRUCTURAL ENGINEERS, INC. IS NOT THE SEOR AS IT RELATES TO VERIFICATION OF SITE CONDITIONS & REQ OBSERVATIONS PER CHAPTER 17/17A OF THE CBC, UNLESS CYS STRUCTURAL ENGINEERS, INC. IS LISTED AS THE SEOR ON THE APPROVED CONSTRUCTION DOCUMENTS.



NOT SEOR

SHEET TITLE: GENERAL NOTES



CYS STRUCTURAL ENGINEERS, INC.

2495 NATOMAS PARK DRIVE, SUITE 650
SACRAMENTO, CA 95833

TEL (916) 920-2020
www.cyseng.com

Job No:	15085
Date:	05/24/2016
Page:	2 of 18

L:\Jobs15\15085 MAC Medical - Sink & Chair Rail System\ACAD\STRU\S1_Skytron.dwg Time:Jul27,2016-02:01pm Login:mayerhoferm DimScale:8 LTScale:8

DESIGN CRITERIA

SUPPORTS & ATTACHMENTS DESIGN FOR ALL EQUIP COMPONENTS IS PER 2013 CBC

ALL EQUIP (UNO)

ASCE 7-10 TABLE 13.5-1
OTHER RIGID COMPONENTS - LOW
DEFORMABILITY MATERIALS & ATTACHMENTS

$$z/h \leq 1.0$$

$$S_{DS} = 2.5$$

$$I_p = 1.5$$

$$C_p = 1.0$$

$$R_p = 1.5$$

$$\Omega_b = 1.5$$

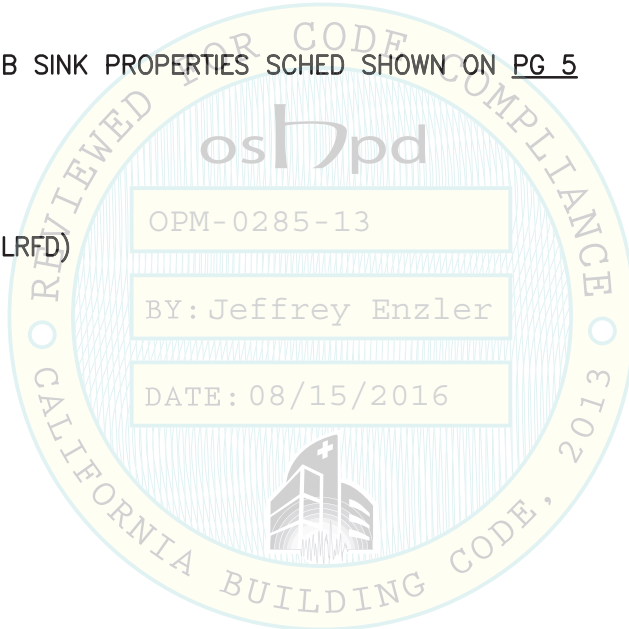
W_p AS NOTED ON SCRUB SINK PROPERTIES SCHED SHOWN ON PG 5

SEISMIC LOADS

ALL EQUIP, UNO

$$F_p = 3.0 W_p \quad (\text{LRFD})$$

$$F_v = 0.50 W_p$$



NOT SEOR

SHEET TITLE: DESIGN CRITERIA



CYS STRUCTURAL ENGINEERS, INC.

2495 NATOMAS PARK DRIVE, SUITE 650
SACRAMENTO, CA 95833

TEL (916) 920-2020
www.cyseng.com

Job No:	15085
Date:	05/24/2016
Page:	3 of 18

L:\Jobs\15085 MAC Medical - Sink & Chair Rail System\ACAD\STRU\S1_Skytron.dwg Time:Jul27,2016-02:02pm Login:mayerhoferm DimScale:8 LTScale:8

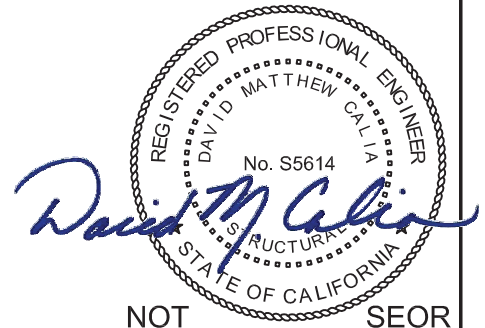
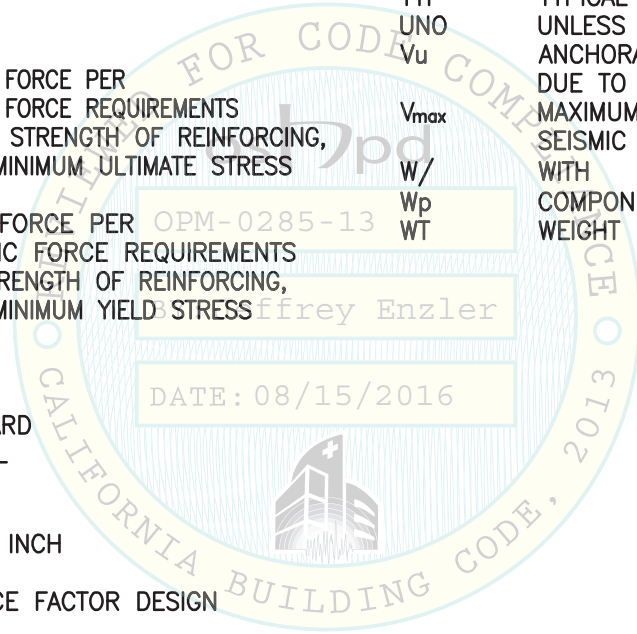
SKYTRON
SURGICAL SCRUB SINK ANCHORAGES



ABBREVIATIONS:

ASCE AMERICAN SOCIETY OF CIVIL ENGINEERS
 ASME AMERICAN SOCIETY OF MECHANICAL ENGINEERS
 ASTM AMERICAN SOCIETY FOR TESTING & MATERIALS
 BOTT BOTTOM
 BTW BETWEEN
 CBC CALIFORNIA BUILDING CODE
 CG CENTER OF GRAVITY
 CLR CLEAR OR CLEARANCE
 CL CENTERLINE
 CONN CONNECTION
 DIA (ϕ) DIAMETER
 DIM DIMENSION
 DTL DETAIL
 EA EACH
 ELEV ELEVATION
 EQ EQUAL
 EQUIP EQUIPMENT
 ES EACH SIDE
 FF FINISHED FLOOR
 F_p HORIZONTAL SEISMIC FORCE PER
 ASCE 7-10 SEISMIC FORCE REQUIREMENTS
 F_u SPECIFIED ULTIMATE STRENGTH OF REINFORCING,
 PSI OR SPECIFIED MINIMUM ULTIMATE STRESS
 OF STEEL, KSI
 F_v VERTICAL SEISMIC FORCE PER
 ASCE 7-10 SEISMIC FORCE REQUIREMENTS
 F_y SPECIFIED YIELD STRENGTH OF REINFORCING,
 PSI OR SPECIFIED MINIMUM YIELD STRESS
 OF STEEL, KSI
 GA GAUGE
 GAL GALLON
 GWB GYPSUM WALL BOARD
 HRS HOT-ROLLED STEEL
 HT HEIGHT
 IN (") INCH
 KSI KIPS PER SQUARE INCH
 LBS POUNDS
 LRFD LOAD & RESISTANCE FACTOR DESIGN
 MAX MAXIMUM
 MFR MANUFACTURER
 MIN MINIMUM
 MTL METAL
 NTS NOT TO SCALE
 NO.(#) NUMBER OR POUND(S)

OPM OSHPD PRE-APPROVAL OF
 MANUFACTURER'S CERTIFICATION
 OPP OPPOSITE
 OSHPD OFFICE OF STATEWIDE HEALTH PLANNING
 & DEVELOPMENT
 PG PAGE
 P_L PLATE
 REQ REQUIRED
 SCHED SCHEDULE
 SDST SELF-DRILLING SELF-TAPPING
 SEOR STRUCTURAL ENGINEER OF RECORD
 SMS SHEET METAL SCREW
 SQ SQUARE
 SS STAINLESS STEEL
 THK THICK OR THICKNESS
 T_u ANCHORAGE TENSION REACTION
 DUE TO SEISMIC FORCE
 TYP TYPICAL
 UNO UNLESS NOTED OTHERWISE
 V_u ANCHORAGE SHEAR REACTION
 DUE TO SEISMIC FORCE
 V_{max} MAXIMUM SHEAR DUE TO
 SEISMIC FORCE
 W/ WITH
 W_p COMPONENT OPERATING-WEIGHT
 WT WEIGHT



NOT SEOR

SHEET TITLE: ABBREVIATIONS



CYS STRUCTURAL ENGINEERS, INC.

2495 NATOMAS PARK DRIVE, SUITE 650
 SACRAMENTO, CA 95833

TEL (916) 920-2020
 www.cyseng.com

Job No:	15085
Date:	05/24/2016
Page:	4 of 18

L:\Jobs15\15085 MAC Medical - Sink & Chair Rail System\ACAD\STRU\S1_Skytron.dwg Time:Jul27,2016-02:02pm Login:mayerhoferm DimScale:8 LTScale:8

SKYTRON
SURGICAL SCRUB SINK ANCHORAGES



SCRUB SINK DIMENSIONS SCHED

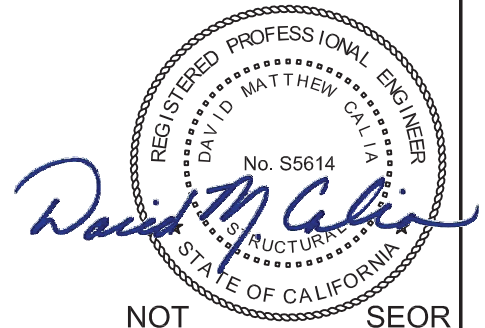
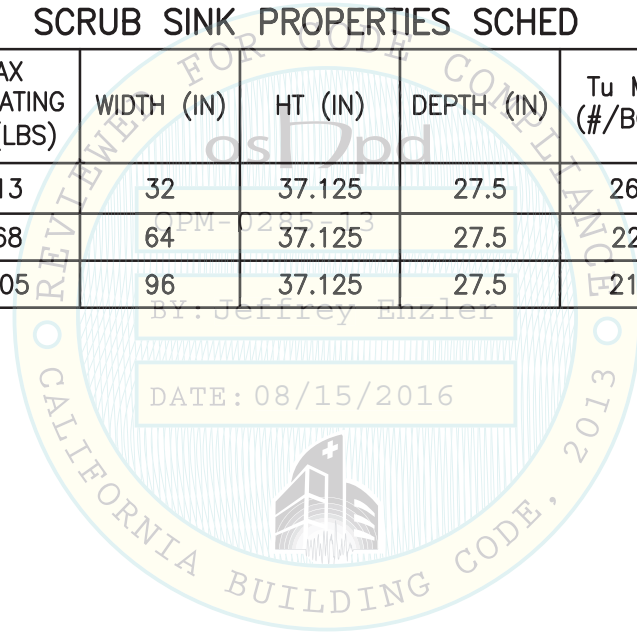
PART NO.	"A" (IN)	"B" (IN)	"C" (IN)	"D" (IN)	"E" (IN)	"F" (IN)	"G" (IN)	"H" (IN)	"J" (IN)	"K" (IN)	"L" (IN)	"M" (IN)	"N" (IN)	"P" (IN)	"Q" (IN)
SS2121-MK	14.9	18.7	11.6	3.5	15.63	2.5	11.88	14.13	14.0	17.63	15.63	-	-	-	-
SS2122-MK	32.0	22.0	12.2	3.5	15.63	2.5	27.88	30.13	29.88	2.88	1.0	31.5	33.5	-	-
SS2123-MK	48.0	19.0	12.3	3.5	15.63	2.5	43.88	46.13	45.88	18.88	13.5	47.5	49.5	15.13	17.13

DIMS SHOWN IN SHADED CELLS INDICATE THE LOCATION OF THE SINK'S CG FILLED W/ WATER.

SCRUB SINK PROPERTIES SCHED

PART NO.	UNIT WT (LBS)	MAX OPERATING WT (LBS)	WIDTH (IN)	HT (IN)	DEPTH (IN)	T _u MAX (#/BOLT)	V _u MAX (#/BOLT)	CAPACITY (GAL)
SS2121-MK	235	413	32	37.125	27.5	260	271	21.02
SS2122-MK	313	668	64	37.125	27.5	221	279	42.04
SS2123-MK	436	1005	96	37.125	27.5	212	290	67.5

DATE: 08/15/2016



NOT SEOR

SHEET TITLE: SCRUB SINK DIMENSIONS & PROPERTIES SCHEDULES



CYS STRUCTURAL ENGINEERS, INC.

2495 NATOMAS PARK DRIVE, SUITE 650
SACRAMENTO, CA 95833

TEL (916) 920-2020
www.cyseng.com

Job No:	15085
Date:	05/24/2016
Page:	5 of 18

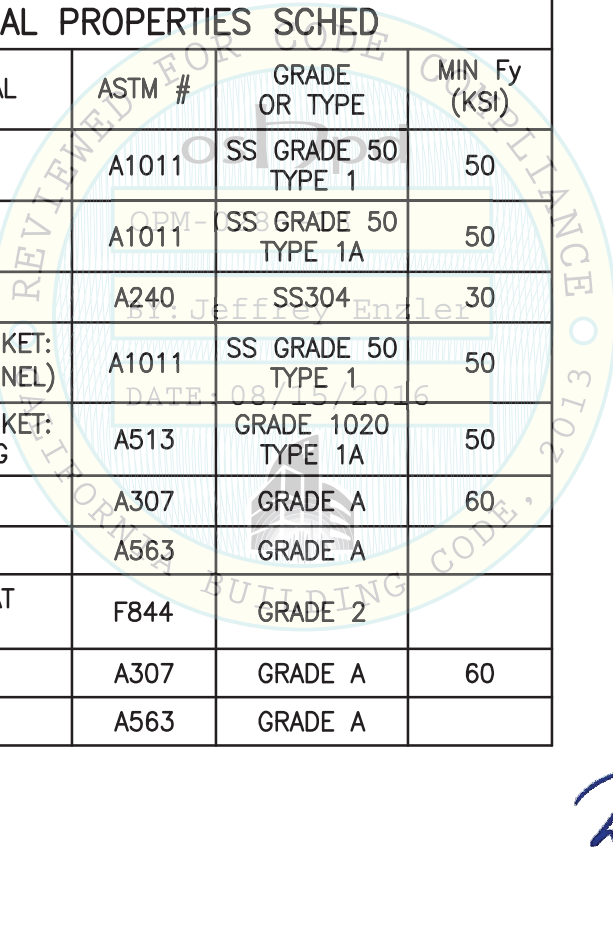
L:\Jobs15\15085 MAC Medical - Sink & Chair Rail System\ACAD\STRU\S1_Skytron.dwg Time:Jul27,2016-02:03pm Login:mayerhoferm DimScale:8 LTScale:8

SKYTRON
SURGICAL SCRUB SINK ANCHORAGES



MATERIAL DIMENSIONS SCHED				
PART NO./ MATERIAL	WIDTH (IN)	LENGTH (IN)		
		SS2121-MK	SS2122-MK	SS2123-MK
TOP CARRIER \mathcal{R}	2	36.5	68.25	100.25
BOTT CARRIER \mathcal{R}	5	36.5	68.25	100.25
"Z" BRACKET	1.92	29	28	28

MATERIAL PROPERTIES SCHED			
PART NO./MATERIAL	ASTM #	GRADE OR TYPE	MIN Fy (KSI)
TOP CARRIER \mathcal{R}	A1011	SS GRADE 50 TYPE 1	50
BOTT CARRIER \mathcal{R}	A1011	SS GRADE 50 TYPE 1A	50
"Z" BRACKET	A240	SS304	30
MAIN SUPPORT BRACKET: 11 GA HRS (U CHANNEL)	A1011	SS GRADE 50 TYPE 1	50
MAIN SUPPORT BRACKET: 16 GA SQ TUBING	A513	GRADE 1020 TYPE 1A	50
$\frac{1}{4}$ " ϕ BOLT	A307	GRADE A	60
$\frac{1}{4}$ " ϕ NUT	A563	GRADE A	
1" ϕ OVERSIZE FLAT WASHER	F844	GRADE 2	
$\frac{3}{8}$ " ϕ BOLT	A307	GRADE A	60
$\frac{3}{8}$ " ϕ NUT	A563	GRADE A	



NOT SEOR

SHEET TITLE: MATERIAL DIMENSIONS & PROPERTIES SCHEDULES



CYS STRUCTURAL ENGINEERS, INC.

2495 NATOMAS PARK DRIVE, SUITE 650
SACRAMENTO, CA 95833

TEL (916) 920-2020
www.cyseng.com

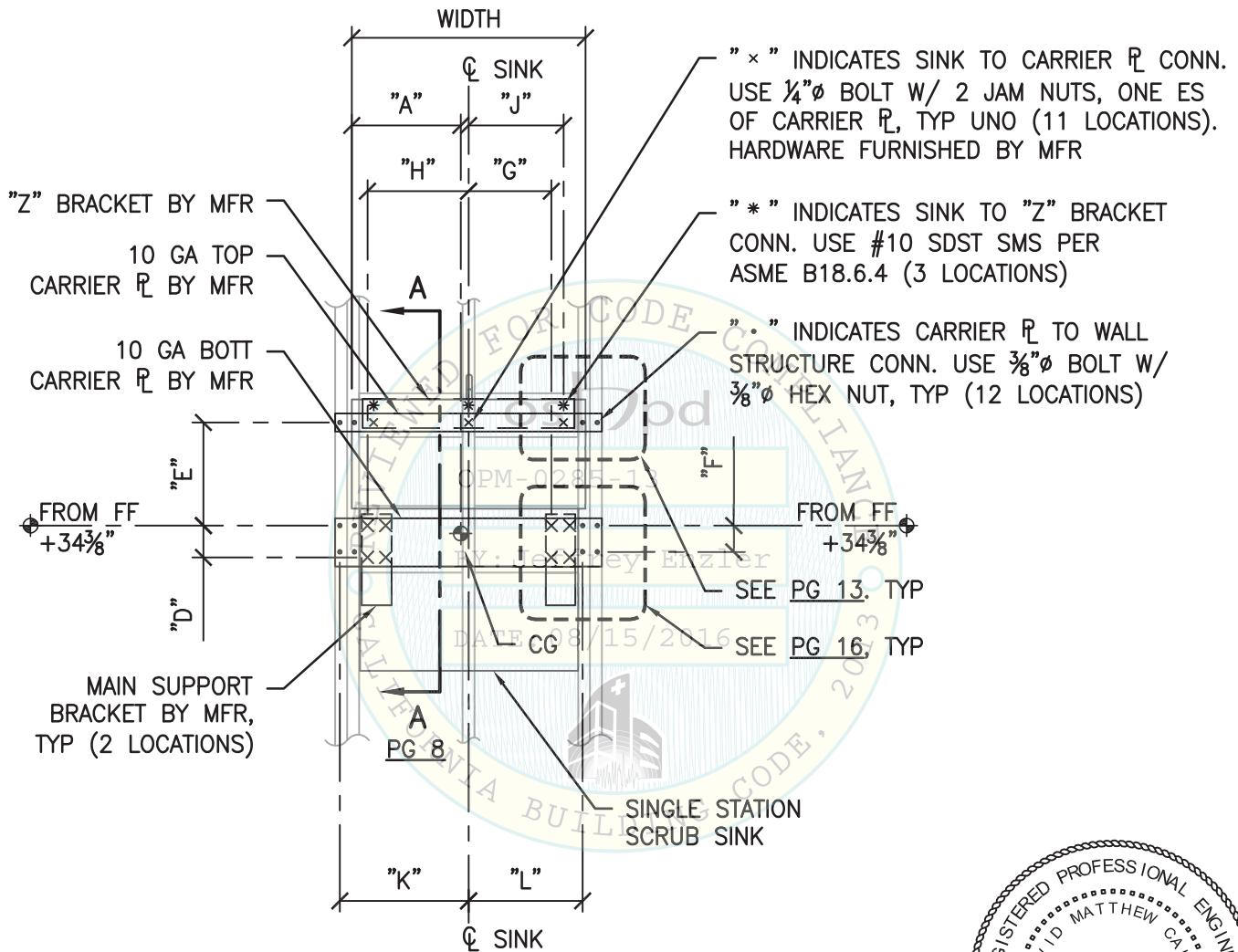
Job No:	15085
Date:	05/24/2016
Page:	6 of 18

L:\Jobs15\15085 MAC Medical - Sink & Chair Rail System\ACAD\STRU\S1_Skytron.dwg Time:Jul27,2016-02:03pm Login:mayerhoferm DimScale:8 LTScale:8

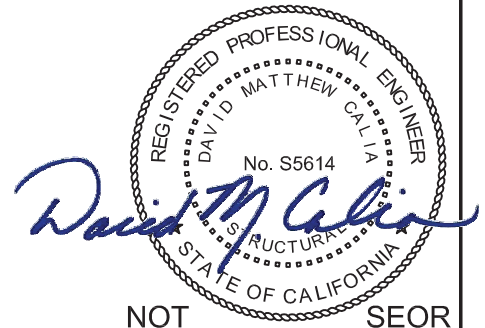
SKYTRON
SURGICAL SCRUB SINK ANCHORAGES



NOTE:
SEE SCHED ON PG 5 FOR DIMS.



**SINGLE STATION SCRUB SINK
BACK ELEV**



NOT SEOR

SHEET TITLE: SINK MODEL SS2121-MK
SINGLE STATION SCRUB SINK - DIMENSION DRAWING



CYS STRUCTURAL ENGINEERS, INC.

2495 NATOMAS PARK DRIVE, SUITE 650
SACRAMENTO, CA 95833

TEL (916) 920-2020
www.cyseng.com

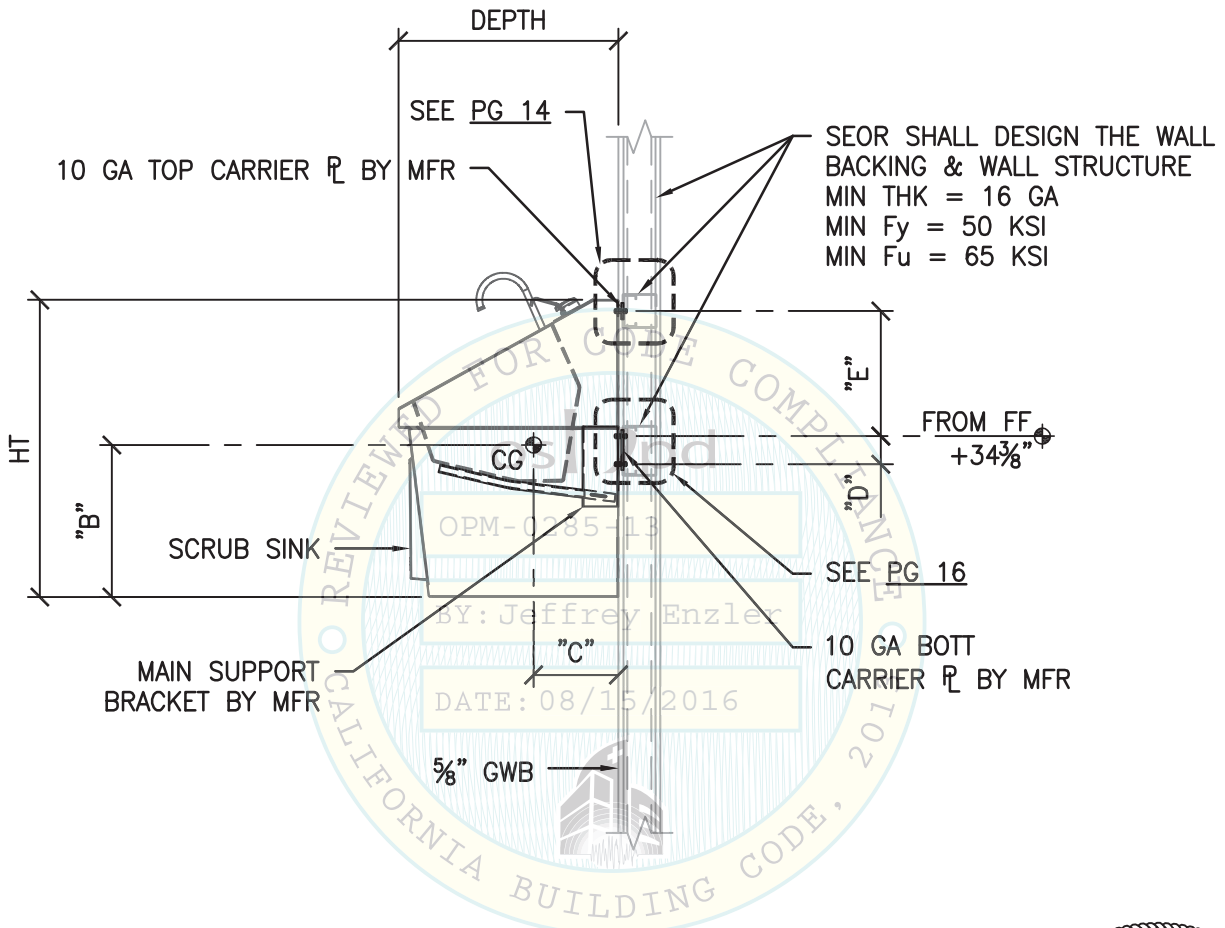
Job No:	15085
Date:	05/24/2016
Page:	7 of 18

L:\Jobs15\15085 MAC Medical - Sink & Chair Rail System\ACAD\STRU\S1_Skytron.dwg Time:Jul27,2016-02:03pm Login:mayerhoferm Dimscale:8 LTScale:8

SKYTRON
SURGICAL SCRUB SINK ANCHORAGES



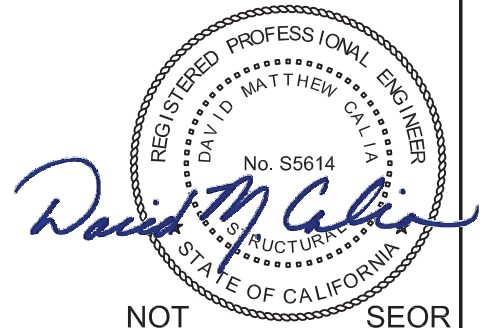
NOTE:
SEE SCHED ON PG 5 FOR DIMS.



SEOR SHALL DESIGN THE WALL
BACKING & WALL STRUCTURE
MIN THK = 16 GA
MIN Fy = 50 KSI
MIN Fu = 65 KSI

FROM FF
+34 3/8"

**SINGLE STATION SCRUB SINK
SECTION A-A**



NOT SEOR

SHEET TITLE: SINK MODEL SS2121-MK
SINGLE STATION SCRUB SINK - DIMENSION DRAWING



CYS STRUCTURAL ENGINEERS, INC.

2495 NATOMAS PARK DRIVE, SUITE 650
SACRAMENTO, CA 95833

TEL (916) 920-2020
www.cyseng.com

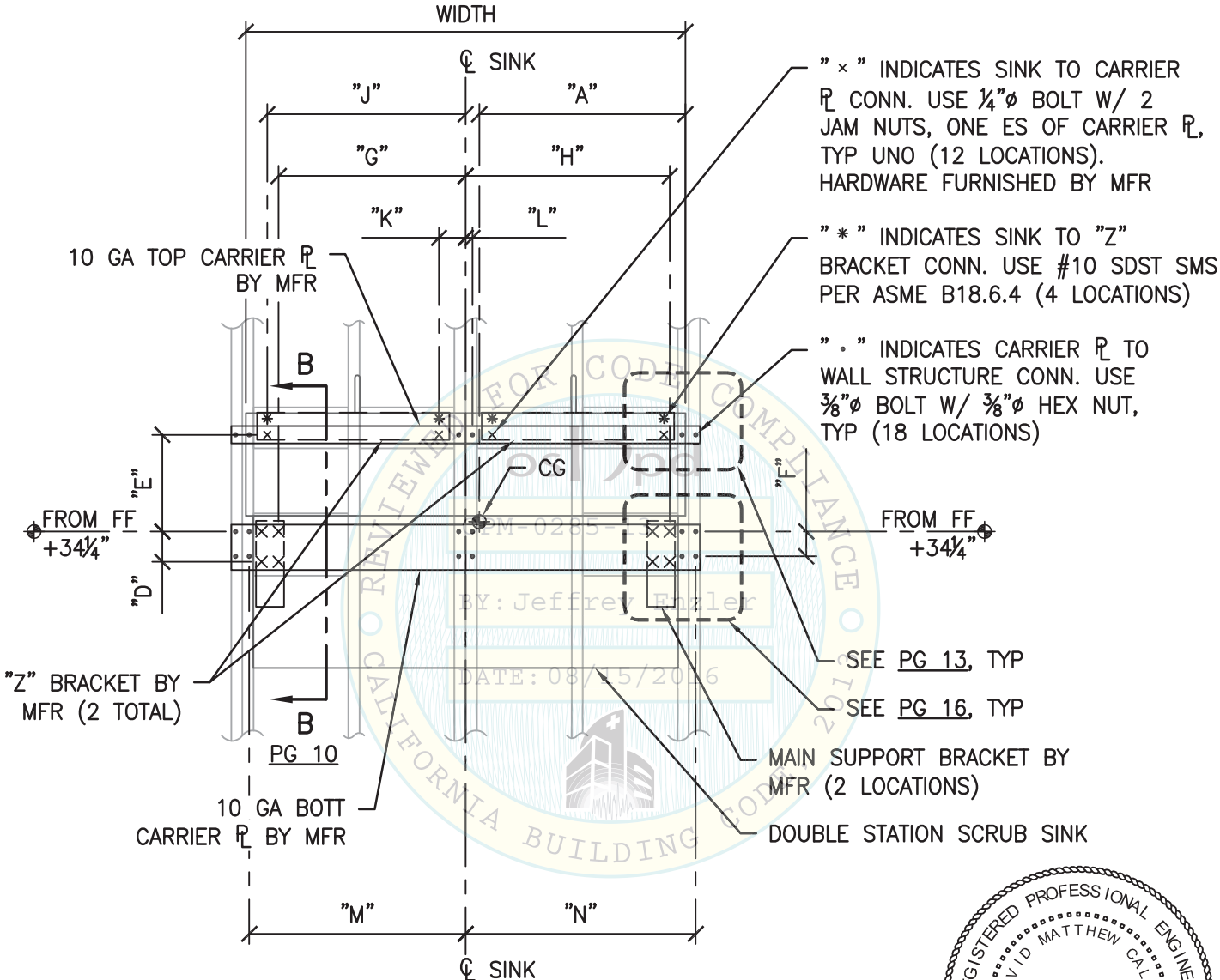
Job No:	15085
Date:	05/24/2016
Page:	8 of 18

L:\Jobs15\15085 MAC Medical - Sink & Chair Rail System\ACAD\STRU\S1_Skytron.dwg Time:Jul27,2016-02:03pm Login:mayerhoferm Dimscale:8 LTScale:8

SKYTRON
SURGICAL SCRUB SINK ANCHORAGES



NOTE:
SEE SCHED ON PG 5 FOR DIMS.



" x " INDICATES SINK TO CARRIER
PL CONN. USE 1/4"Ø BOLT W/ 2
JAM NUTS, ONE ES OF CARRIER PL,
TYP UNO (12 LOCATIONS).
HARDWARE FURNISHED BY MFR

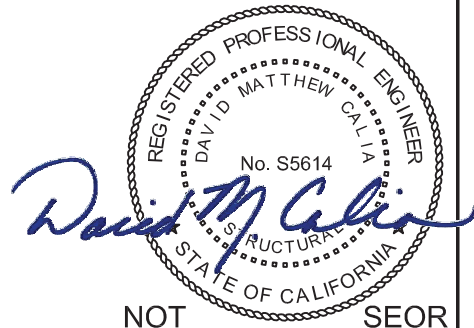
" * " INDICATES SINK TO "Z"
BRACKET CONN. USE #10 SDST SMS
PER ASME B18.6.4 (4 LOCATIONS)

" . " INDICATES CARRIER PL TO
WALL STRUCTURE CONN. USE
3/8"Ø BOLT W/ 3/8"Ø HEX NUT,
TYP (18 LOCATIONS)

SEE PG 13, TYP
SEE PG 16, TYP

MAIN SUPPORT BRACKET BY
MFR (2 LOCATIONS)
DOUBLE STATION SCRUB SINK

**DOUBLE STATION SCRUB SINK
BACK ELEV**



NOT SEOR

SHEET TITLE: SINK MODEL SS2122-MK
DOUBLE STATION SCRUB SINK - DIMENSION DRAWING

CYS STRUCTURAL ENGINEERS, INC.
2495 NATOMAS PARK DRIVE, SUITE 650
SACRAMENTO, CA 95833
TEL (916) 920-2020
www.cyseng.com

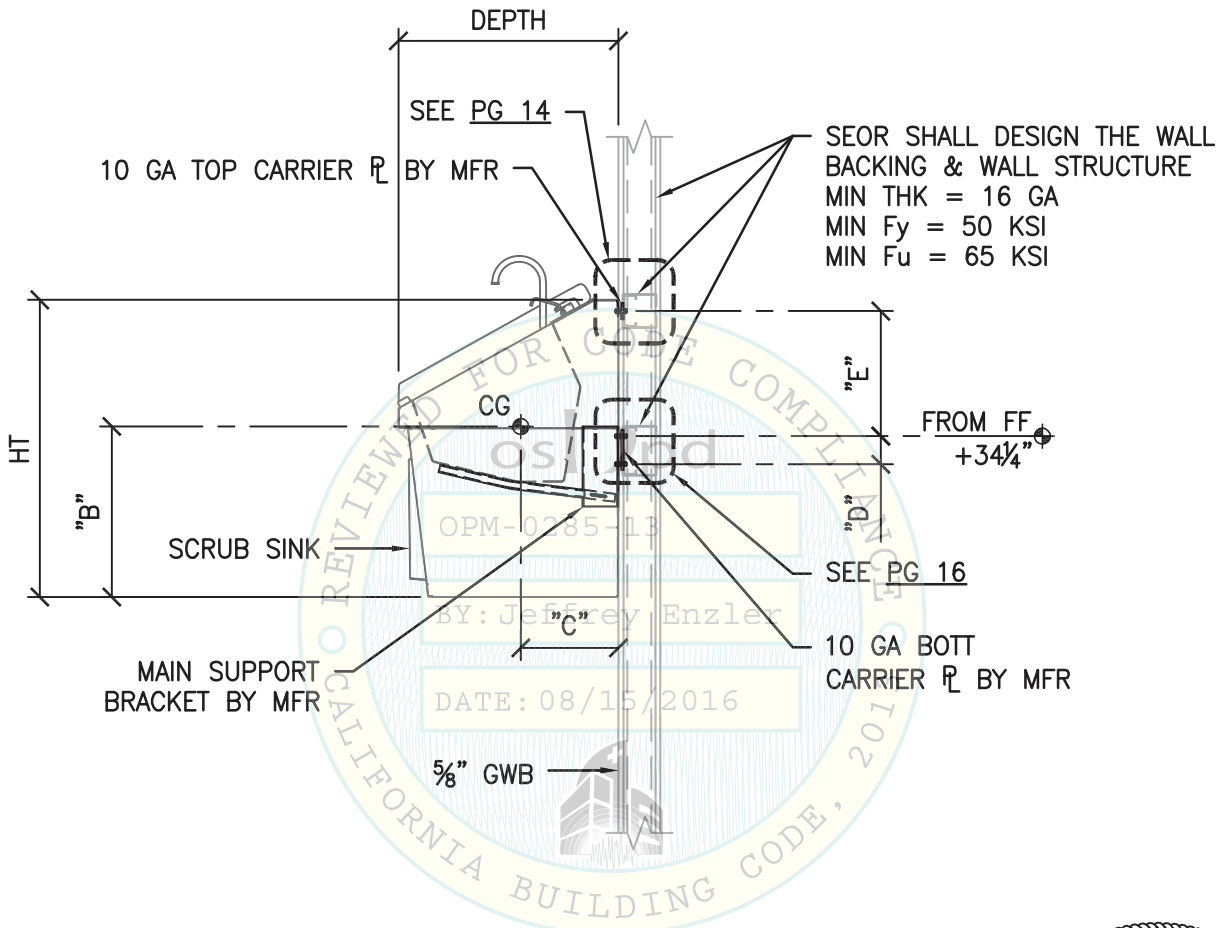
Job No:	15085
Date:	05/24/2016
Page:	9 of 18

L:\Jobs15\15085 MAC Medical - Sink & Chair Rail System\ACAD\STRU\S1_Skytron.dwg Time:Jul27,2016-02:04pm Login:mayerhoferm DimScale:8 LTScale:8

SKYTRON
SURGICAL SCRUB SINK ANCHORAGES



NOTE:
SEE SCHED ON PG 5 FOR DIMS.



**DOUBLE STATION SCRUB SINK
SECTION B-B**

REGISTERED PROFESSIONAL ENGINEER
DAVID MATTHEW CALIA
No. S5614
David M. Calia
STRUCTURAL
STATE OF CALIFORNIA

NOT SEOR

SHEET TITLE: SINK MODEL SS2122-MK
DOUBLE STATION SCRUB SINK - DIMENSION DRAWING



CYS STRUCTURAL ENGINEERS, INC.

2495 NATOMAS PARK DRIVE, SUITE 650
SACRAMENTO, CA 95833

TEL (916) 920-2020
www.cyseng.com

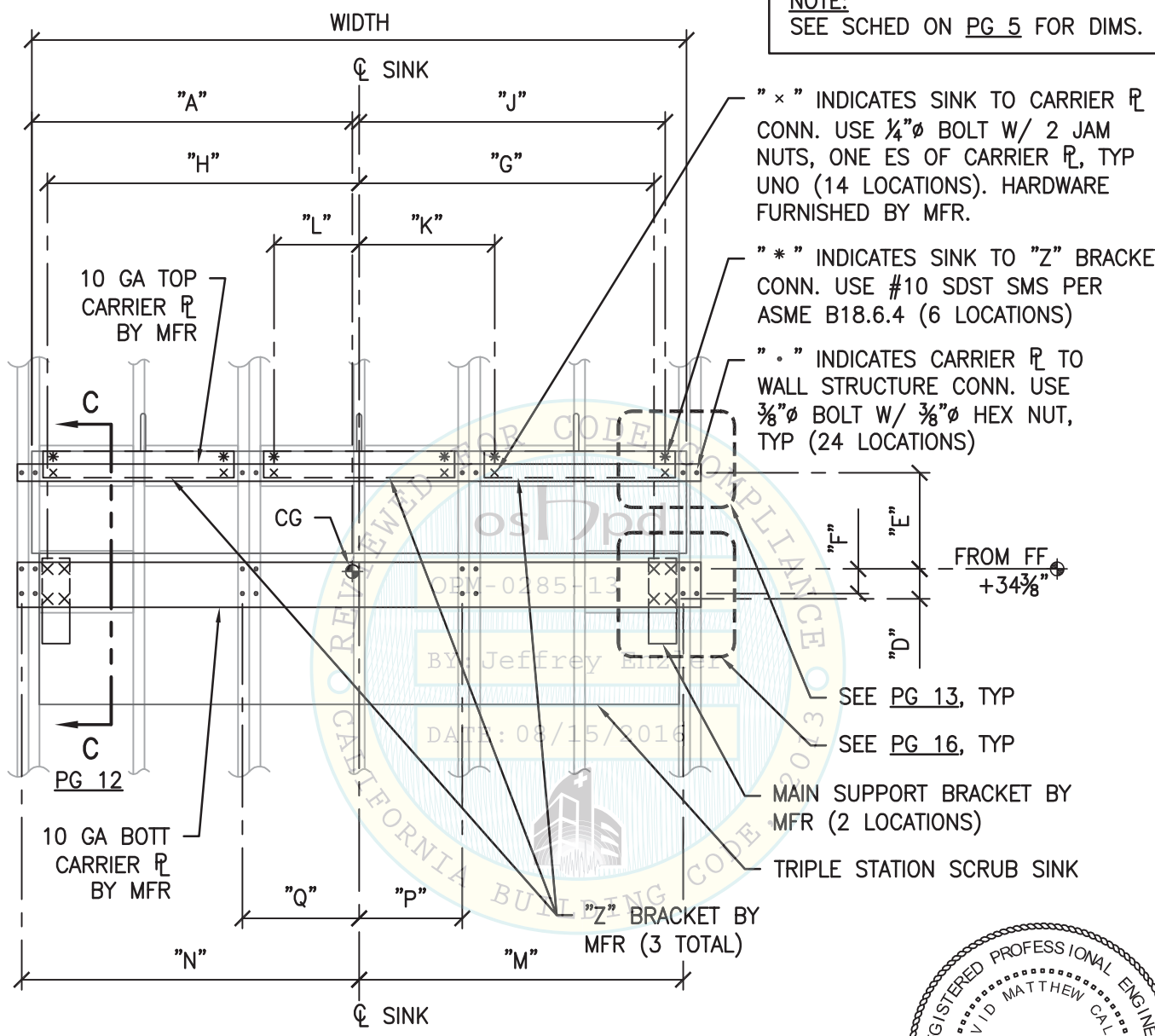
Job No:	15085
Date:	05/24/2016
Page:	10 of 18

L:\Jobs15\15085 MAC Medical - Sink & Chair Rail System\ACAD\STRU\S1_Skytron.dwg Time:Jul27,2016-02:04pm Login:mayerhoferm Dimscale:8 LScale:8

SKYTRON
SURGICAL SCRUB SINK ANCHORAGES



NOTE:
SEE SCHED ON PG 5 FOR DIMS.



" x " INDICATES SINK TO CARRIER \varnothing CONN. USE $\frac{1}{4}$ " \varnothing BOLT W/ 2 JAM NUTS, ONE ES OF CARRIER \varnothing , TYP UNO (14 LOCATIONS). HARDWARE FURNISHED BY MFR.

" * " INDICATES SINK TO "Z" BRACKET CONN. USE #10 SDST SMS PER ASME B18.6.4 (6 LOCATIONS)

" . " INDICATES CARRIER \varnothing TO WALL STRUCTURE CONN. USE $\frac{3}{8}$ " \varnothing BOLT W/ $\frac{3}{8}$ " \varnothing HEX NUT, TYP (24 LOCATIONS)

SEE PG 13, TYP

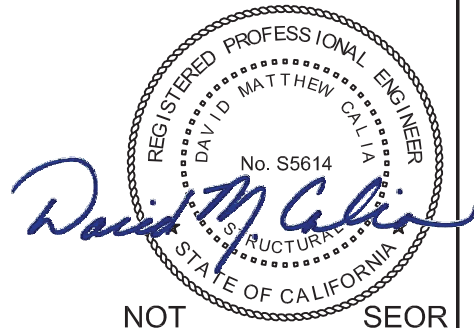
SEE PG 16, TYP

MAIN SUPPORT BRACKET BY MFR (2 LOCATIONS)

TRIPLE STATION SCRUB SINK

"Z" BRACKET BY MFR (3 TOTAL)

**TRIPLE STATION SCRUB SINK
BACK ELEV**



NOT SEOR

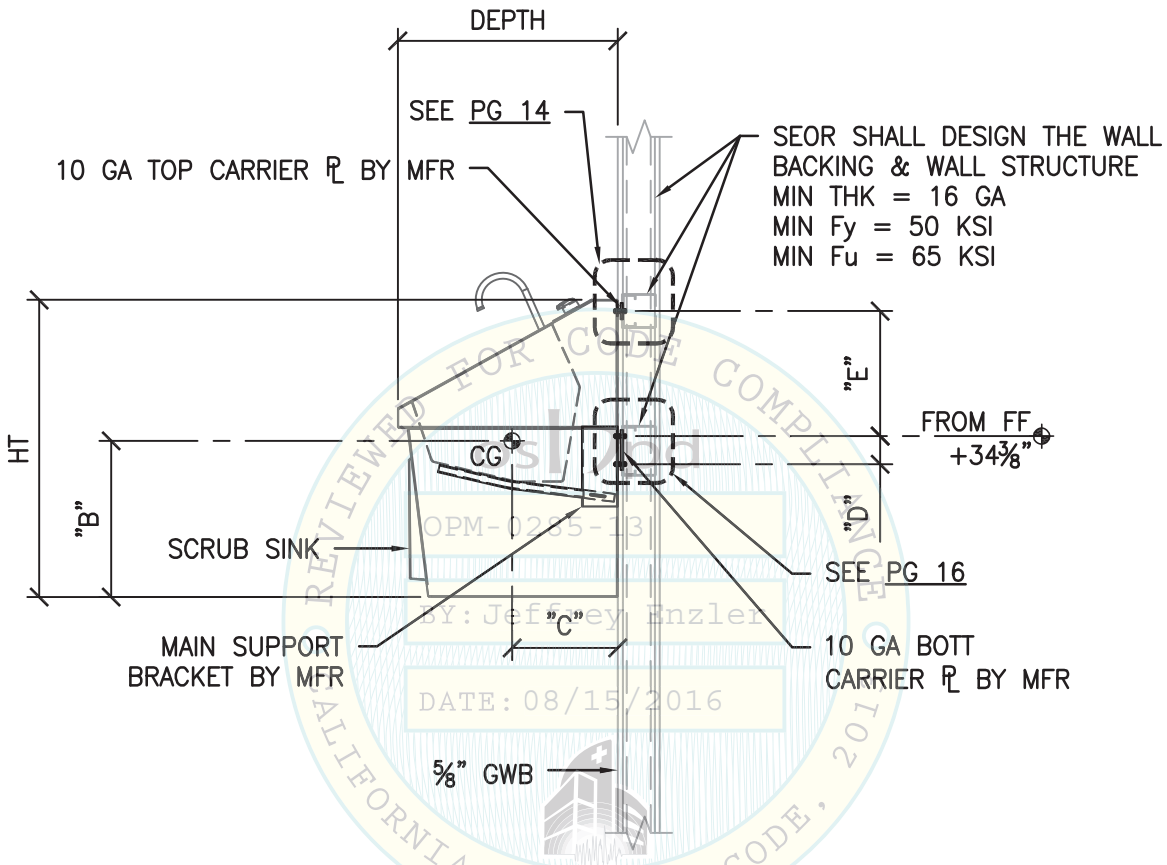
SHEET TITLE: SINK MODEL SS2123-MK
TRIPLE STATION SCRUB SINK - DIMENSION DRAWING

CYS STRUCTURAL ENGINEERS, INC.
2495 NATOMAS PARK DRIVE, SUITE 650
SACRAMENTO, CA 95833
TEL (916) 920-2020
www.cyseng.com

Job No:	15085
Date:	05/24/2016
Page:	11 of 18

L:\Jobs15\15085 MAC Medical - Sink & Chair Rail System\ACAD\STRU\S1_Skytron.dwg Time:Jul27,2016-02:04pm Login:mayerhoferm DimScale:8 LTScale:8

NOTE:
SEE SCHED ON PG 5 FOR DIMS.



**TRIPLE STATION SCRUB SINK
SECTION C-C**

REGISTERED PROFESSIONAL ENGINEER
DAVID MATTHEW CALIA
No. S5614
STRUCTURAL
STATE OF CALIFORNIA

David M. Calia

NOT SEOR

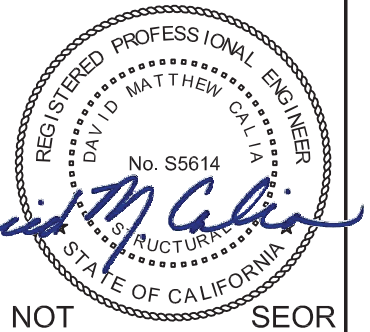
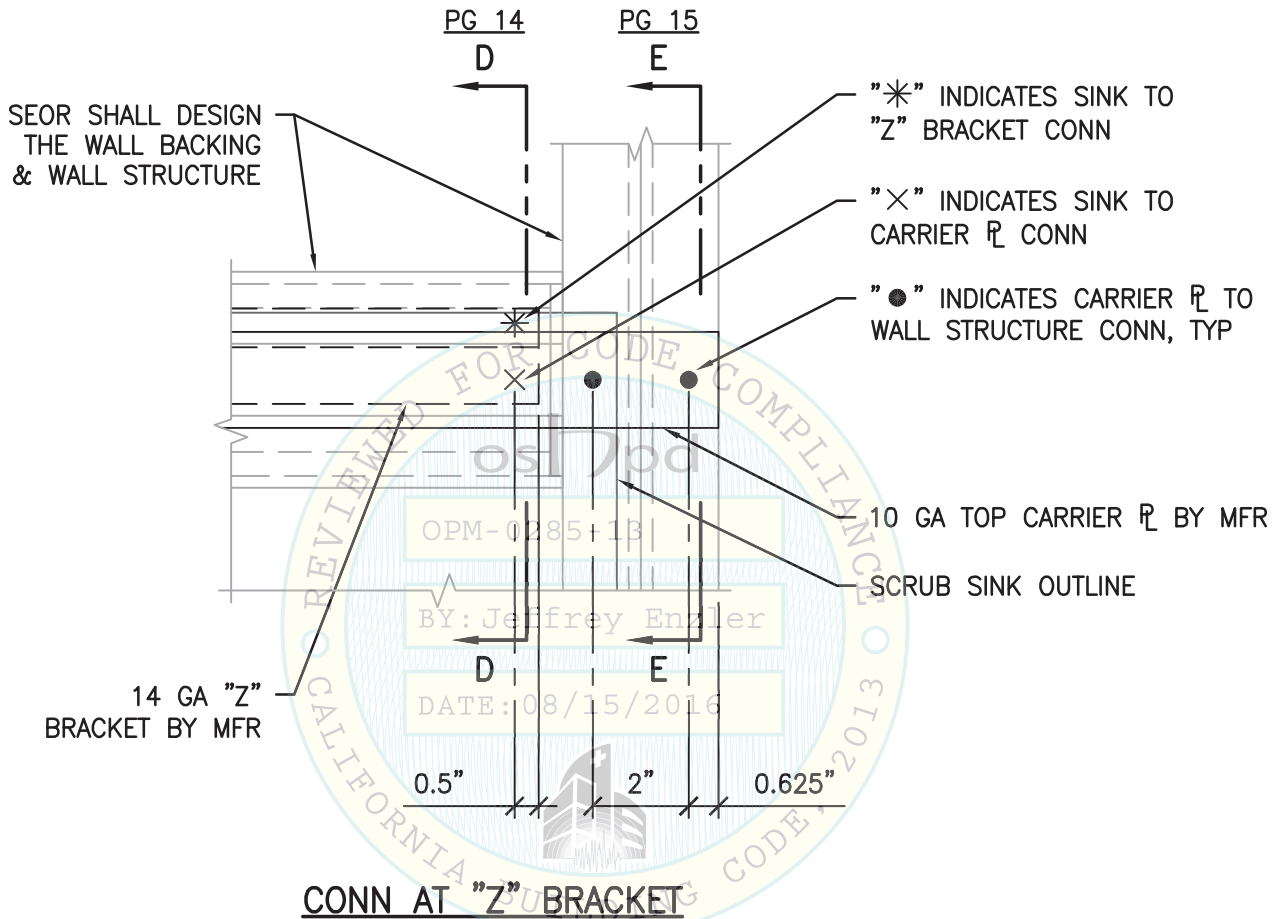
SHEET TITLE: SINK MODEL SS2123-MK
TRIPLE STATION SCRUB SINK - DIMENSION DRAWING

CYS STRUCTURAL ENGINEERS, INC.
2495 NATOMAS PARK DRIVE, SUITE 650
SACRAMENTO, CA 95833
TEL (916) 920-2020
www.cyseng.com

Job No:	15085
Date:	05/24/2016
Page:	12 of 18

L:\Jobs15\15085 MAC Medical - Sink & Chair Rail System\ACAD\STRU\S1_Skytron.dwg Time:Jul27,2016-02:05pm Login:mayerhoferm Dimscale:8 LScale:8

SKYTRON
SURGICAL SCRUB SINK ANCHORAGES



NOT SEOR

SHEET TITLE: SCRUB SINK CONNECTION DETAIL



CYS STRUCTURAL ENGINEERS, INC.

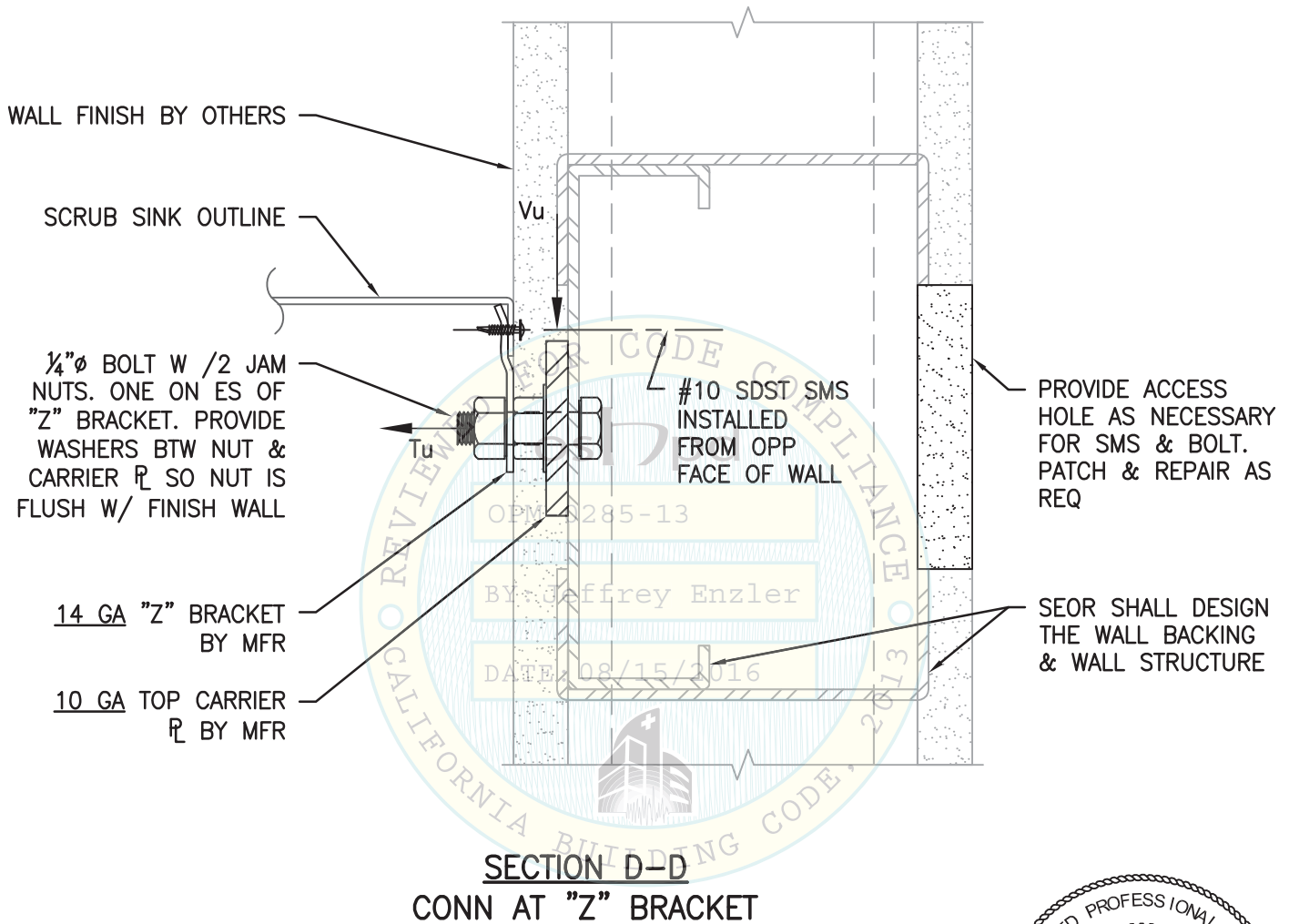
2495 NATOMAS PARK DRIVE, SUITE 650
SACRAMENTO, CA 95833

TEL (916) 920-2020
www.cyseng.com

Job No:	15085
Date:	05/24/2016
Page:	13 of 18

L:\Jobs15\15085 MAC Medical - Sink & Chair Rail System\ACAD\STRU\S1_Skytron.dwg Time:Jul27,2016-02:05pm Login:mayerhoferm DimScale:8 LTScale:8

L:\Jobs15\15085 MAC Medical - Sink & Chair Rail System\ACAD\STRU\S1_Skytron.dwg Time:Jul27,2016-02:05pm Login:mayerhoferm DimScale:8 LScale:8



SECTION D-D
CONN AT "Z" BRACKET

NOT SEOR

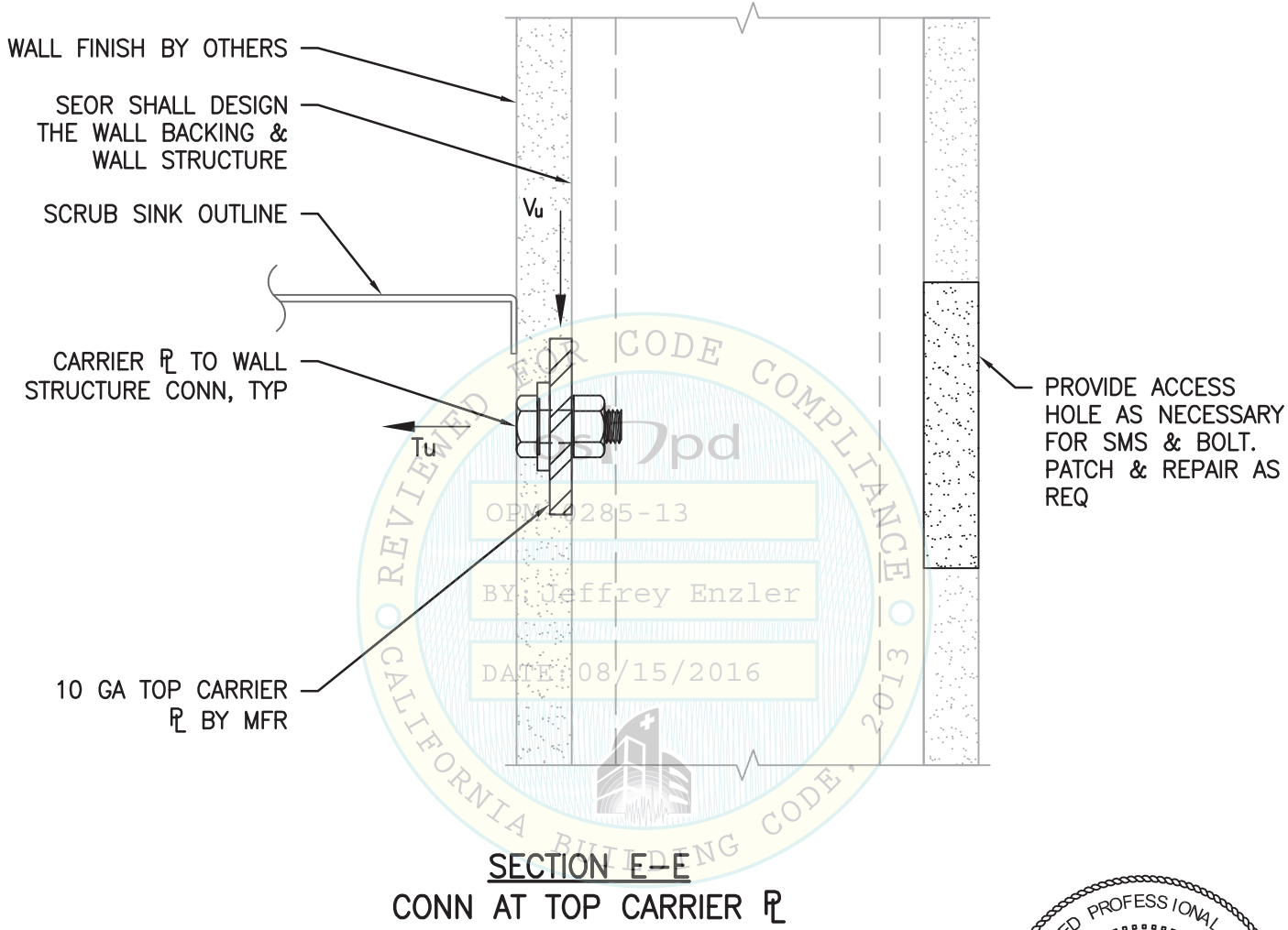
SHEET TITLE: SCRUB SINK CONNECTION DETAIL

	CYS STRUCTURAL ENGINEERS, INC.		Job No:	15085
	2495 NATOMAS PARK DRIVE, SUITE 650		Date:	05/24/2016
	SACRAMENTO, CA 95833		Page:	14 of 18
	TEL (916) 920-2020	www.cyseng.com		

SKYTRON
SURGICAL SCRUB SINK ANCHORAGES



L:\Jobs15\15085 MAC Medical - Sink & Chair Rail System\ACAD\STRU\S1_Skytron.dwg Time:Jul27,2016-02:06pm Login:mayerhoferm Dimscale:8 LScale:8



NOT SEOR

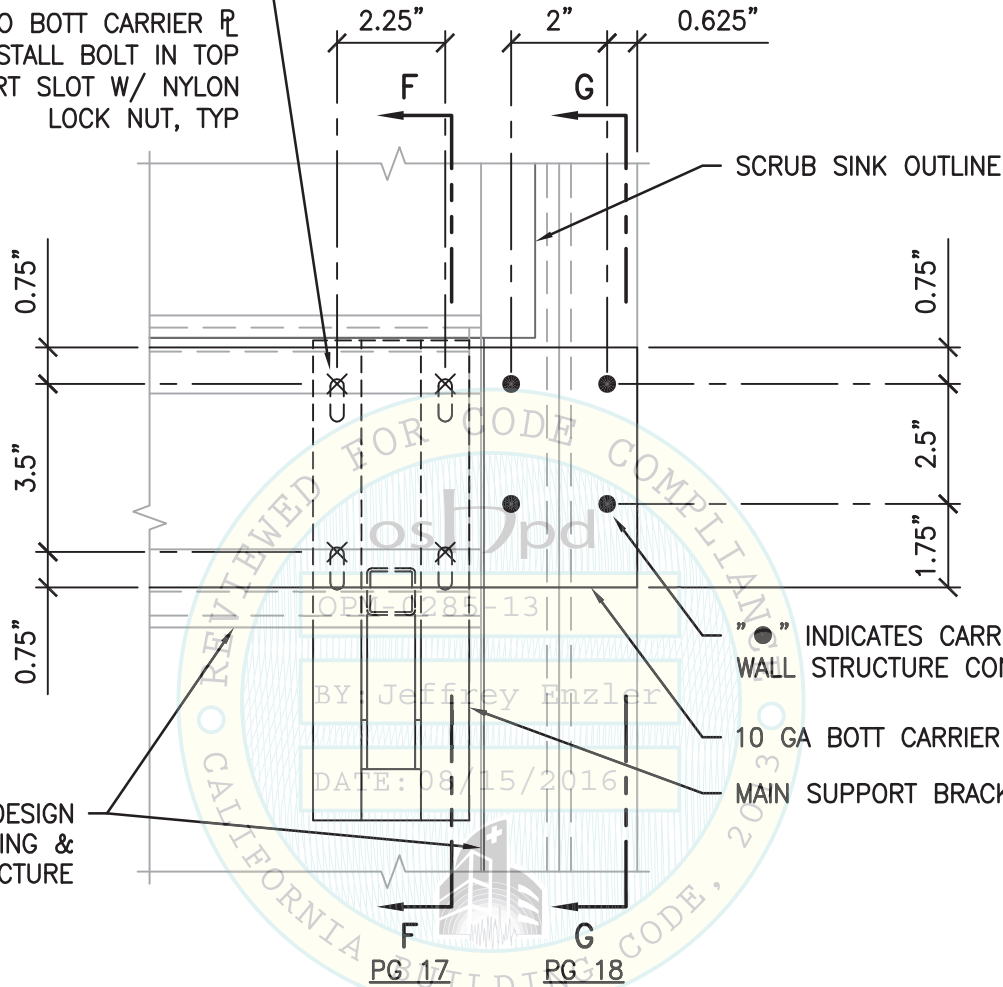
SHEET TITLE: SCRUB SINK CONNECTION DETAIL

<p>CYS STRUCTURAL ENGINEERS, INC. 2495 NATOMAS PARK DRIVE, SUITE 650 SACRAMENTO, CA 95833</p>	TEL (916) 920-2020 www.cyseng.com	Job No: 15085 Date: 05/24/2016 Page: 15 of 18
--	--------------------------------------	---

SKYTRON
SURGICAL SCRUB SINK ANCHORAGES



"X" INDICATES MAIN SUPPORT BRACKET TO BOTT CARRIER PL CONN. INSTALL BOLT IN TOP OF VERT SLOT W/ NYLON LOCK NUT, TYP



"●" INDICATES CARRIER PL TO WALL STRUCTURE CONN, TYP

10 GA BOTT CARRIER PL BY MFR
MAIN SUPPORT BRACKET BY MFR

SEOR SHALL DESIGN THE WALL BACKING & WALL STRUCTURE

**CONN AT MAIN
SUPPORT BRACKET**



NOT SEOR

SHEET TITLE: SCRUB SINK CONNECTION DETAIL



CYS STRUCTURAL ENGINEERS, INC.

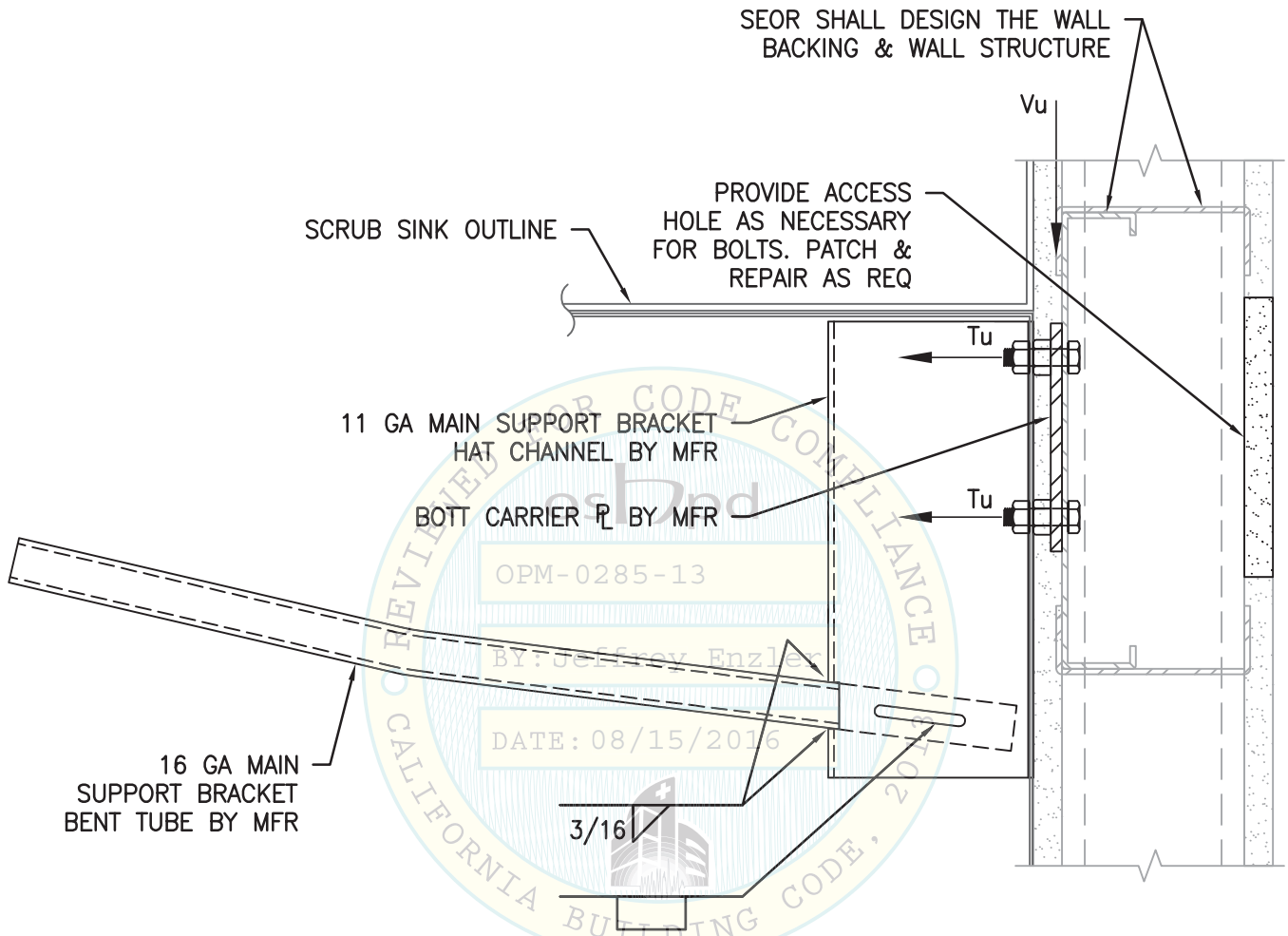
2495 NATOMAS PARK DRIVE, SUITE 650
SACRAMENTO, CA 95833

TEL (916) 920-2020
www.cyseng.com

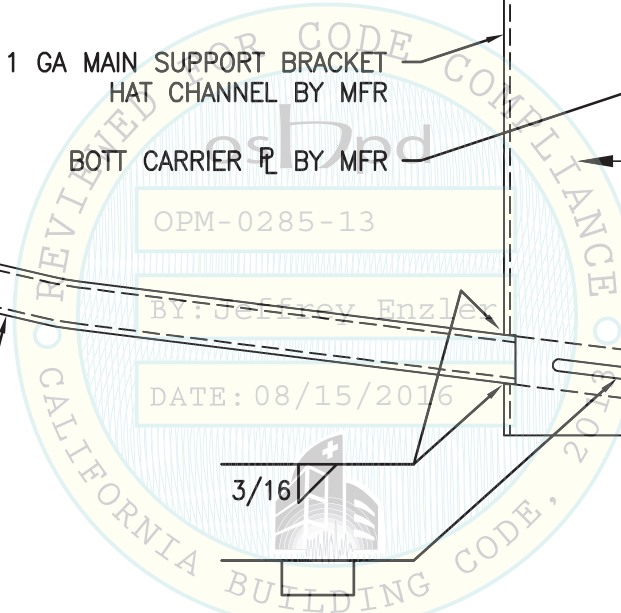
Job No:	15085
Date:	05/24/2016
Page:	16 of 18

L:\Jobs15\15085 MAC Medical - Sink & Chair Rail System\ACAD\STRU\S1_Skytron.dwg Time:Jul27,2016-02:06pm Login:mayerhoferm DimScale:8 LScale:8

L:\Jobs15\15085 MAC Medical - Sink & Chair Rail System\ACAD\STRU\S1_Skytron.dwg Time:Jul27,2016-02:06pm Login:mayerhoferm Dimscale:8 LScale:8



SECTION F-F
CONN AT MAIN SUPPORT BRACKET



REGISTERED PROFESSIONAL ENGINEER
DAVID M. CALIA
No. S5614
STRUCTURAL
STATE OF CALIFORNIA

David M. Calia

NOT SEOR

SHEET TITLE: SCRUB SINK CONNECTION DETAIL

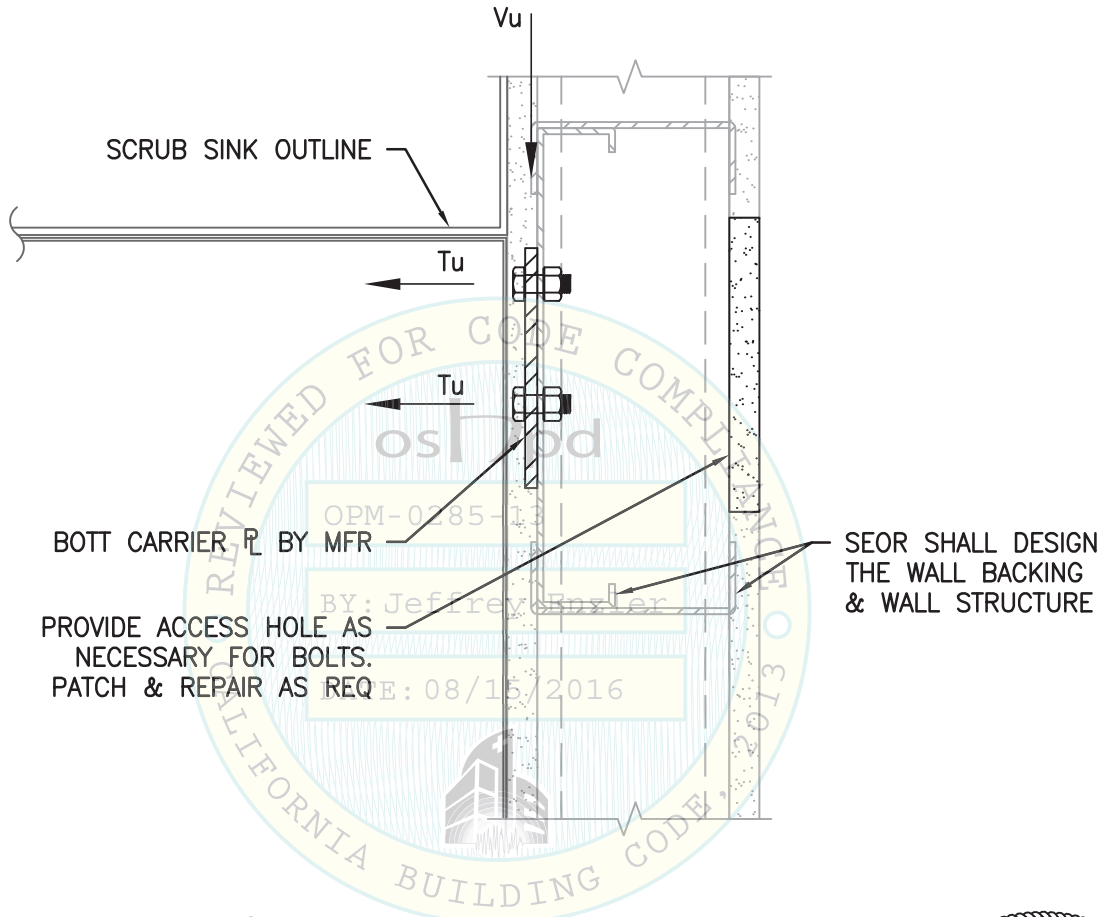


CYS STRUCTURAL ENGINEERS, INC.

2495 NATOMAS PARK DRIVE, SUITE 650
SACRAMENTO, CA 95833

TEL (916) 920-2020
www.cyseng.com

Job No:	15085
Date:	05/24/2016
Page:	17 of 18



SECTION G-G
CONN AT BOTT CARRIER

REGISTERED PROFESSIONAL ENGINEER
DAVID MATTHEW CALIA
No. S5614
STRUCTURAL
STATE OF CALIFORNIA

David M. Calia

NOT SEOR

SHEET TITLE: SCRUB SINK CONNECTION DETAIL



CYS STRUCTURAL ENGINEERS, INC.

2495 NATOMAS PARK DRIVE, SUITE 650
SACRAMENTO, CA 95833

TEL (916) 920-2020
www.cyseng.com

Job No:	15085
Date:	05/24/2016
Page:	18 of 18

L:\Jobs15\15085 MAC Medical - Sink & Chair Rail System\ACAD\STRU\S1_Skytron.dwg Time:Jul27,2016-02:07pm Login:mayerhoferm Dimscale:8 LScale:8