



OFFICE OF STATEWIDE HEALTH PLANNING AND DEVELOPMENT
FACILITIES DEVELOPMENT DIVISION

APPLICATION FOR OSHPD PREAPPROVAL
OF MANUFACTURER'S CERTIFICATION (OPM)

OFFICE USE ONLY

APPLICATION #: OPM-0360-13

OSHPD Preapproval of Manufacturer's Certification (OPM)

Type: ☒ New ☐ Renewal ☐ Update to Pre-CBC 2013 OPA Number: _____

Manufacturer Information

Manufacturer: ICW USA, Inc.

Manufacturer's Technical Representative: Steve Ingram

Mailing Address: 1487 Kingsley Drive, Medford, OR. 97504

Telephone: On File Email: On File

Product Information

Product Name: Titan and Elite Wall Mounts

Product Type: Computer

Product Model Number: UL182EV7-W3-KUS-MD26, ELP5220-WT-KUS-MD26, T2EP-WT2-KWP-MD26, T2P2020-WT2-KWP-MD26 and MDP18WMD-KPW-MD26

General Description: Wall Mount for Monitor, Keyboard and Mouse available with 12", 19", 26" & 36" Tracks

Applicant Information

Applicant Company Name: EASE Co.

Contact Person: Jonathan Roberson, S.E.

Mailing Address: 5877 Pine Ave. Suite 210, Chino Hills, CA. 91709

Telephone: (909) 606-7622 Email: J.Roberson@EASECo.com

I hereby agree to reimburse the Office of Statewide Health Planning and Development review fees in accordance with the California Administrative Code, 2016.

Signature of Applicant:

Date: 6/1/16

Title: Principal Engineer Company Name: EASE Co.

"Access to Safe, Quality Healthcare Environments that Meet California's Diverse and Dynamic Needs"

STATE OF CALIFORNIA – HEALTH AND HUMAN SERVICES AGENCY
OSH-FD-700 (REV 12/16/15)



OSHPD

Page 1 of 2



OFFICE OF STATEWIDE HEALTH PLANNING AND DEVELOPMENT
FACILITIES DEVELOPMENT DIVISION

Registered Design Professional Preparing Engineering Recommendations

Company Name: EASE Co.

Name: Jonathan Roberson, S.E. California License Number: S4197

Mailing Address: 5877 Pine Ave. Suite 210, Chino Hills, CA. 91709

Telephone: 909-606-7622 Email: J.Roberson@EASECo.com

OSHPD Special Seismic Certification Preapproval (OSP)

- ☐ Special Seismic Certification is preapproved under OSP-
(Separate application for OSP is required)
- ☒ Special Seismic Certification is not preapproved

Certification Method(s)

- ☐ Testing in accordance with: ☐ ICC-ES AC156 ☐ FM 1950-16
- ☐ Other* (Please Specify): _____

*Use of criteria other than those adopted by the California Building Standards Code, 2016 (CBSC 2016) for component supports and attachments are not permitted. For distribution system, interior partition wall, and suspended ceiling seismic bracings, test criteria other than those adopted in the CBSC 2016 may be used when approved by OSHPD prior to testing.

- ☒ Analysis
- ☐ Experience Data
- ☐ Combination of Testing, Analysis, and/or Experience Data (Please Specify): _____

List of Attachments Supporting the Manufacturer's Certification

- ☐ Test Report ☒ Drawings ☒ Calculations ☐ Manufacturer's Catalog
- ☐ Other(s) (Please Specify): _____

OFFICE USE ONLY – OSHPD APPROVAL VALID FOR CBC 2016 & ALL PRE-2016 CODE BASED PROJECTS

Signature: Jeffrey Kikumoto Date: 02/23/2017

Print Name: Jeffrey Kikumoto

Title: SSE

Condition of Approval (if applicable): _____

"Access to Safe, Quality Healthcare Environments that Meet California's Diverse and Dynamic Needs"





**EQUIPMENT ANCHORAGE
& SEISMIC ENGINEERING**

5877 Pine Ave, Ste. 210
Chino Hills, CA. 91709
Phn: (909) 606-7622

Office of Statewide Health Planning and Development
PREAPPROVAL OF MANUFACTURER'S CERTIFICATION
OPM-0360-13

THIS PREAPPROVAL CONFORMS TO THE 2016 CALIFORNIA BUILDING CODE

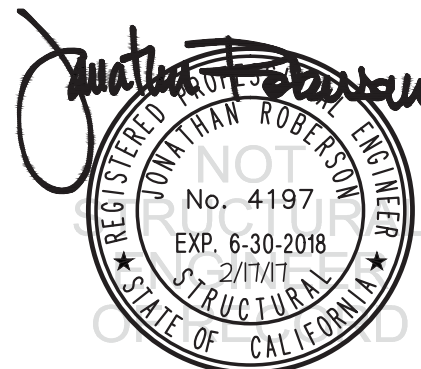
MANUFACTURER: **ICW USA INC.**
EQUIPMENT NAME: **TITAN AND ELITE WALL MOUNTS**

Sheet: 1 of 7

Date: 2/17/17

GENERAL NOTES

1. THIS OSHPD PREAPPROVAL OF MANUFACTURER'S CERTIFICATION (OPM) IS BASED ON THE 2016 CBC, THE DEMANDS (DESIGN FORCES) FOR USE WITH THIS OPM SHALL BE BASED ON THE 2016 CBC.
2. THIS DOCUMENT MAY ONLY BE USED WITH THE EXPRESS WRITTEN CONSENT OF THE MANUFACTURER LISTED ABOVE FOR THE SPECIFIC PROJECT SITE AND INSTALLATION LOCATION. THIS DOCUMENT IS INVALID WITHOUT SUCH CONSENT.
3. THIS PREAPPROVAL CONFORMS TO THE 2016 CALIFORNIA BUILDING CODE.
4. FORCES PER ASCE 7-10 SECTION 13.3.1, EQUATIONS 13.3-1, 13.3-2 & 13.3-3, WHERE $S_{ds} = 1.70$, $a_p = 2.5$, $I_p = 1.5$, $R_p = 2.5$, $z/h \leq 1$.
5. THE DETAILS IN THIS PREAPPROVAL MAY BE USED AT ANY LOCATION IN THE STATE OF CALIFORNIA, WHERE S_{ds} IS NOT GREATER THAN 1.70.
6. ALL DESIGN FORCES SHOWN ON THE DRAWINGS ARE FACTORED LOADS THAT SHALL BE USED FOR STRENGTH DESIGN.
7. SHEET METAL SCREWS SHALL BE TEKS SCREWS BY ITW BUILDEX (ICC ESR-1976).
8. THIS PREAPPROVAL COVERS ONLY THE SUPPORTS AND ATTACHMENTS OF THE EQUIPMENT TO THE STRUCTURE.
9. RESPONSIBILITIES OF THE STRUCTURAL ENGINEER OF RECORD OF THE BUILDING
 - A. PROVIDE SUPPORTING STRUCTURE REQUIRED TO SUPPORT WEIGHTS AND FORCES SHOWN, IN ADDITION TO ALL OTHER LOADS.
 - B. VERIFY THAT THE INSTALLATION IS IN CONFORMANCE WITH THE 2016 CBC AND WITH THE DETAILS SHOWN IN THIS PREAPPROVAL. VERIFY THAT THE ACTUAL EQUIPMENT'S WEIGHT, CG LOCATION, ANCHOR LOCATIONS, ANCHOR DETAILS AND THE MATERIAL AND GAGE OF THE UNIT WHERE ATTACHMENTS ARE MADE AGREE WITH THE INFORMATION SHOWN ON THE PREAPPROVAL DOCUMENTS.
 - C. VERIFY THAT THE COMBINATION OF S_{ds} & z/h RESULT IN SEISMIC FORCES (E_h , E_v) THAT ARE NOT GREATER THAN THE VALUES ON THE DETAILS.
 - D. DESIGN BACKING BARS, STUDS, ETC. WHICH THE UNITS ARE ATTACHED TO AS NOTED ON THE DRAWINGS.



ICW USA INC.

TITAN AND ELITE WALL MOUNTS

DES. **J. ROBERSON**

JOB NO. **11-1532**

DATE **2/17/17**

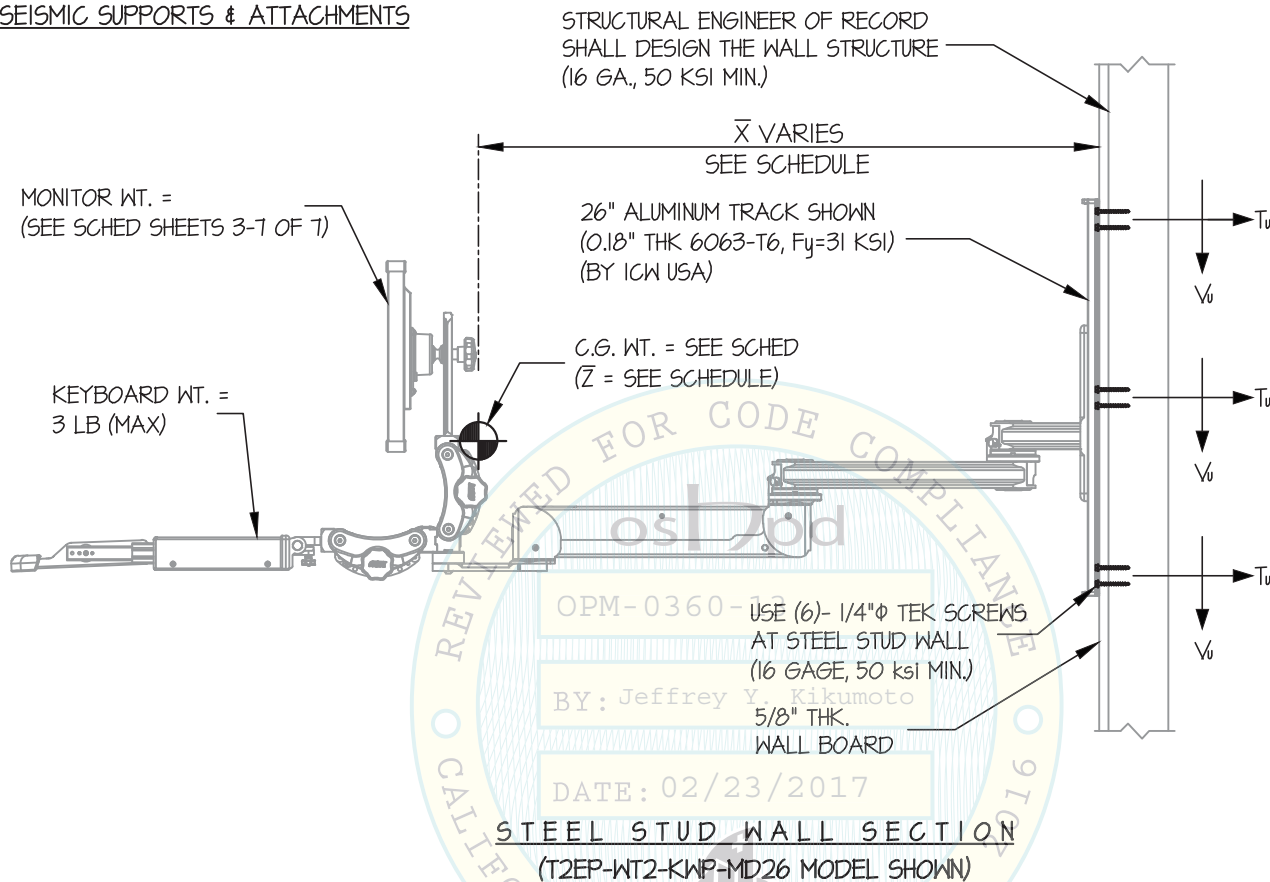
SHEET

2

OF **7** SHEETS

SEISMIC SUPPORTS & ATTACHMENTS

WALL MOUNTED



NOTES:

- FORCES ARE DETERMINED PER 2016 CALIFORNIA BUILDING CODE AND ASCE 7-10
STRENGTH DESIGN IS USED. ($S_{Ds} = 1.70$, $a_p = 2.5$, $I_p = 1.5$, $R_p = 2.5$, $z/h \leq 1$)

$$\text{HORIZONTAL FORCE (Eh)} = 3.06 W_p$$

$$\text{VERTICAL FORCE (Ev)} = 0.34 W_p$$

- CENTER OF GRAVITY (C.G.) AND WEIGHT ARE THE GOVERNING PARAMETERS FOR DESIGN. THIS PREAPPROVAL ENCOMPASSES ALL WEIGHTS UP TO THE MAXIMUM WEIGHT SHOWN.
- STRUCTURAL ENGINEER OF RECORD FOR THE BUILDING SHALL PROVIDE SUPPORT STRUCTURE DESIGNED TO SUPPORT WEIGHTS AND FORCES SHOWN IN COMBINATION WITH ALL OTHER LOADS THAT MAY BE PRESENT.
- SEE GENERAL NOTES: SHEETS 1



ICW USA INC.

DES. J. ROBERSON

SHEET

3

JOB NO. 11-1532

TITAN AND ELITE WALL MOUNTS

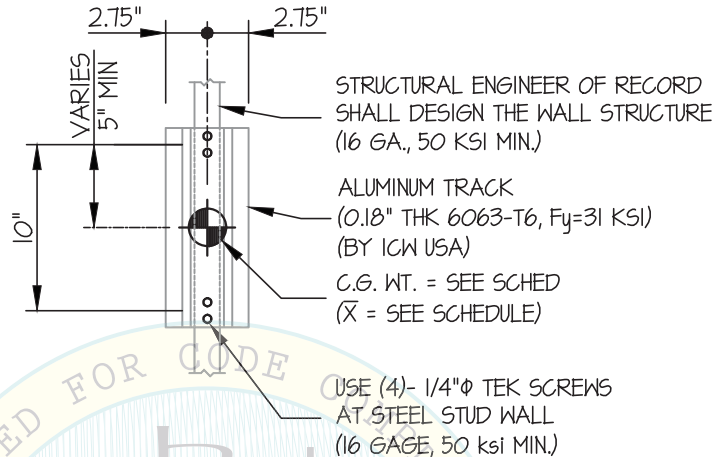
DATE 2/17/17

OF 7 SHEETS

SEISMIC SUPPORTS & ATTACHMENTS

12" TRACK

WALL MOUNTED



ELEVATION AT WALL PLATE

OPM-0360-13

MODEL	MONITOR WEIGHT (LB)	TOTAL LOAD (LB.)	\bar{X} (in.)	(AFW) T_u (lb.)	(AFW) V_u (lb.)	(AW) T_u (lb.)	(AW) V_u (lb.)
UL182EV7-W3-KUS-MD26	32	61	31.57	195	52	87	197
ELP5220-WT-KUS-MD26	28	62	47.97	277	53	88	278
T2EP-WT2-KWP-MD26	28	63	46.99	277	54	90	277
T2P2020-WT2-KPW-MD26	28	60	41.27	237	52	85	238
MDP18WMD-KPW-MD26	35	69	32.18	224	59	98	225



ICW USA INC.

TITAN AND ELITE WALL MOUNTS

DES. J. ROBERSON

JOB NO. 11-1532

DATE 2/17/17

SHEET

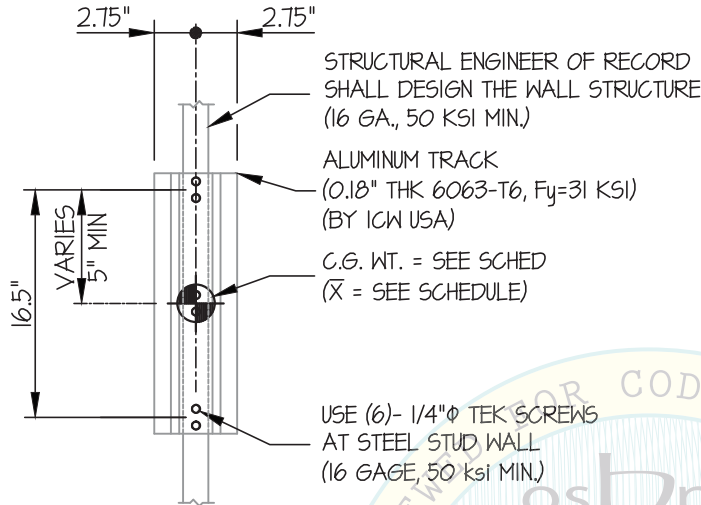
4

OF 7 SHEETS

SEISMIC SUPPORTS & ATTACHMENTS

19" TRACK

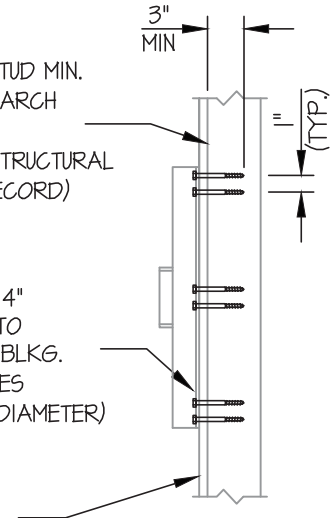
WALL MOUNTED



VERTICAL 4 x STUD MIN.
(DOUGLAS-FIR LARCH
NUMBER 2 MIN.)
(DESIGNED BY STRUCTURAL
ENGINEER OF RECORD)

USE (6)- 1/4" ϕ X 4"
WOOD SCREWS TO
WOOD STUD OR BLKG.
(PRE-DRILL HOLES
TO 70% SHANK DIAMETER)

5/8" THK.
WALL BOARD



ELEVATION AT WALL PLATE

MODEL	MONITOR WEIGHT (LB.)	TOTAL LOAD (LB.)	\bar{X} (in.)	(AFW) T_u (lb.)	(AFW) V_u (lb.)	(AW) T_u (lb.)	(AW) V_u (lb.)
UL182EV7-W3-KUS-MD26	32	61	31.57	121	49	57	138
ELP5220-WT-KUS-MD26	28	62	47.97	171	50	58	187
T2EP-WT2-KWP-MD26	28	63	46.99	170	51	59	187
T2P2020-WT2-KPW-MD26	28	60	41.27	146	49	56	162
MDP18WMD-KPW-MD26	35	69	32.18	139	56	64	158

NOTE:
MIN EDGE DISTANCE = 1"
MIN END DISTANCE = 2"

WOOD STUD WALL SECTION



ICW USA INC.

TITAN AND ELITE WALL MOUNTS

DES. J. ROBERSON

JOB NO. 11-1532

DATE 2/17/17

SHEET

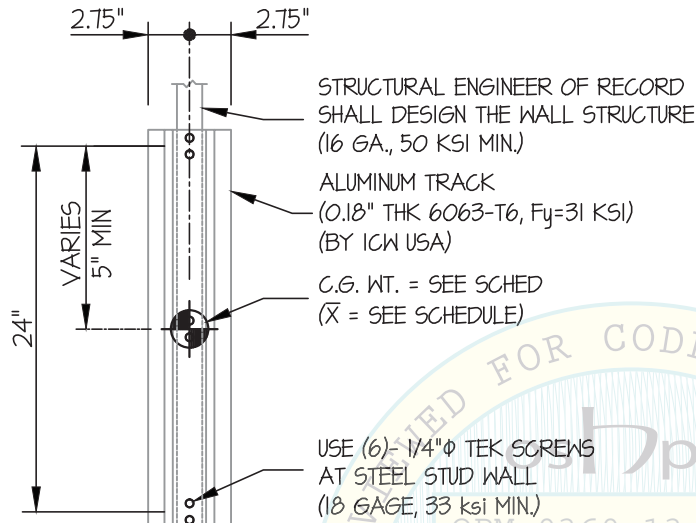
5

OF 7 SHEETS

SEISMIC SUPPORTS & ATTACHMENTS

26" TRACK

WALL MOUNTED



ELEVATION AT WALL PLATE

VERTICAL 4 x STUD MIN. (DOUGLAS-FIR LARCH NUMBER 2 MIN.) (DESIGNED BY STRUCTURAL ENGINEER OF RECORD)

USE (6)- 1/4" ϕ x 4" WOOD SCREWS TO WOOD STUD OR BLKG. (PRE-DRILL HOLES TO 70% SHANK DIAMETER)

5/8" THK. WALL BOARD

NOTE:
MIN EDGE DISTANCE = 1"
MIN END DISTANCE = 2"

WOOD STUD WALL SECTION

MODEL	MONITOR WEIGHT (LB)	TOTAL LOAD (LB)	\bar{X} (in)	(AFW) T_u (lb)	(AFW) V_u (lb)	(AW) T_u (lb)	(AW) V_u (lb)
UL182EV7-W3-KUS-MD26	32	61	31.57	93	49	53	110
ELP5220-WT-KUS-MD26	28	62	47.97	127	50	54	144
T2EP-WT2-KWP-MD26	28	63	46.99	127	51	55	144
T2P2020-WT2-KPW-MD26	28	60	41.27	110	49	52	126
MDP18WMD-KPW-MD26	35	69	32.18	107	56	60	125



ICW USA INC.

DES. J. ROBERSON

SHEET

6

JOB NO. 11-1532

DATE 2/17/17

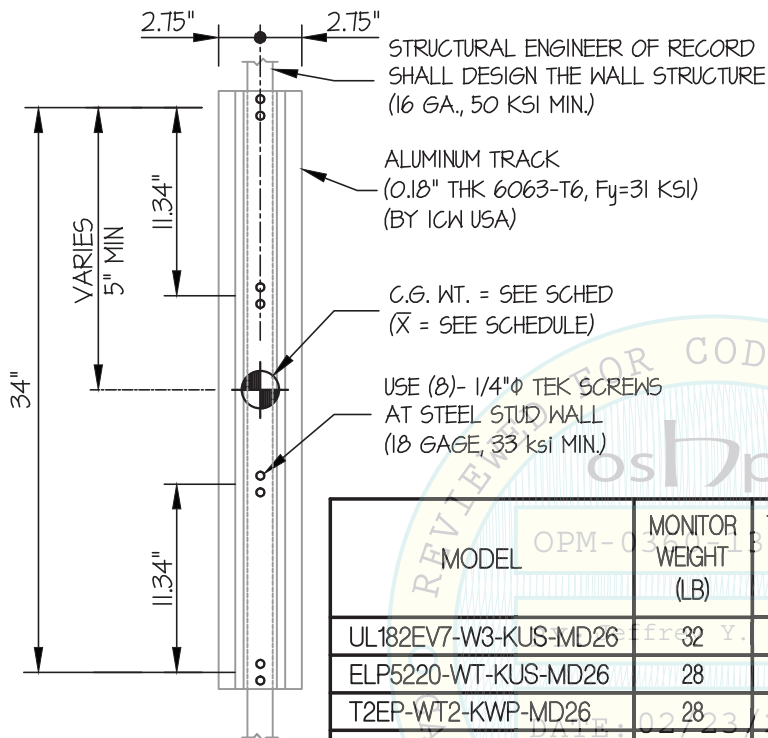
OF 7 SHEETS

TITAN AND ELITE WALL MOUNTS

SEISMIC SUPPORTS & ATTACHMENTS

36" TRACK

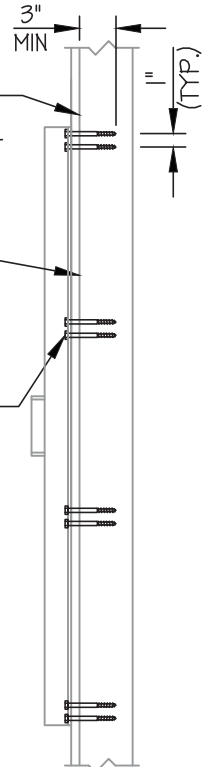
WALL MOUNTED



VERTICAL 4 x STUD MIN. (DOUGLAS-FIR LARCH NUMBER 2 MIN.) (DESIGNED BY STRUCTURAL ENGINEER OF RECORD)

5/8" THK. WALL BOARD

USE (8)- 1/4"Ø x 4" WOOD SCREWS TO WOOD STUD OR BLKG. (PRE-DRILL HOLES TO 70% SHANK DIAMETER)



MODEL	MONITOR WEIGHT (LB)	TOTAL LOAD (LB)	X (in)	(AFW) T _u (lb)	(AFW) V _u (lb)	(AW) T _u (lb)	(AW) V _u (lb)
UL182EV7-W3-KUS-MD26	32	61	31.57	66.9	48	40	91
ELP5220-WT-KUS-MD26	28	62	47.97	91	49	40	115
T2EP-WT2-KWP-MD26	28	63	46.99	91	50	41	116
T2P2020-WT2-KPW-MD26	28	60	41.27	79	47	39	103
MDP18WMD-KPW-MD26	35	69	32.18	77	55	45	104

ELEVATION AT WALL PLATE

NOTE:

MIN EDGE DISTANCE = 1"

MIN END DISTANCE = 2"

WOOD STUD WALL SECTION



ICW USA INC.

DES. J. ROBERSON

SHEET

7

JOB NO. 11-1532

TITAN AND ELITE WALL MOUNTS

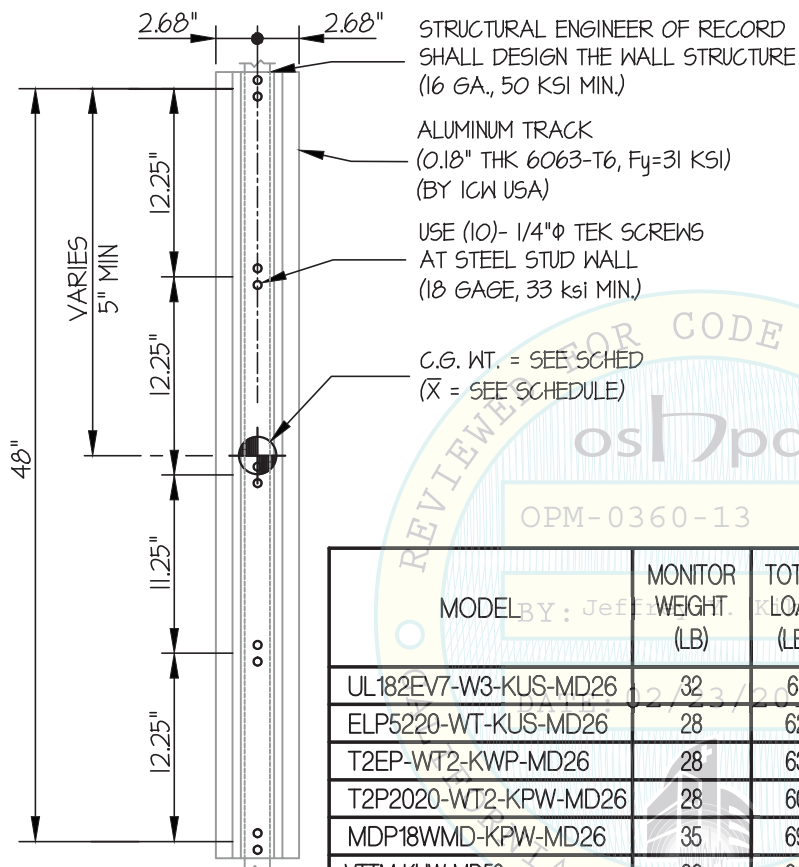
DATE 2/17/17

OF 7 SHEETS

SEISMIC SUPPORTS & ATTACHMENTS

50° TRACK

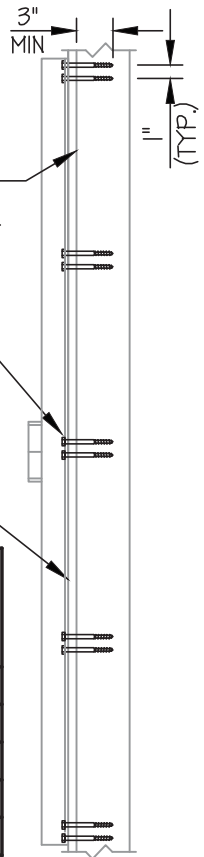
WALL MOUNTED



VERTICAL 4 x STUD MIN. (DOUGLAS-FIR LARCH NUMBER 2 MIN.) (DESIGNED BY STRUCTURAL ENGINEER OF RECORD)

USE (10)- 1/4"Φ x 4" WOOD SCREWS TO WOOD STUD OR BLKG. (PRE-DRILL HOLES TO 70% SHANK DIAMETER)

5/8" THK. WALL BOARD



MODEL	MONITOR WEIGHT (LB)	TOTAL LOAD (LB)	X̄ (in.)	(APW) T _u (lb.)	(APW) V _u (lb.)	(AW) T _u (lb.)	(AW) V _u (lb.)
UL182EV7-W3-KUS-MD26	32	61	31.57	50	48	31	78
ELP5220-WT-KUS-MD26	28	62	47.97	67	49	32	96
T2EP-WT2-KWP-MD26	28	63	46.99	67	50	32	97
T2P2020-WT2-KPW-MD26	28	60	41.27	58	47	31	86
MDP18WMD-KPW-MD26	35	69	32.18	57	54	35	89
VTTM-KUW-MD50	28	84	16.66	48	66	43	88

NOTE:

MIN EDGE DISTANCE = 1"

MIN END DISTANCE = 2"

ELEVATION AT WALL PLATE

WOOD STUD WALL SECTION

