



OFFICE OF STATEWIDE HEALTH PLANNING AND DEVELOPMENT
FACILITIES DEVELOPMENT DIVISION

APPLICATION FOR OSHPD PREAPPROVAL
OF MANUFACTURER'S CERTIFICATION (OPM)

OFFICE USE ONLY
APPLICATION #: OPM-0361-13

OSHPD Preapproval of Manufacturer's Certification (OPM)

Type: [X] New [ ] Renewal [ ] Update to Pre-CBC 2013 OPA Number:

Manufacturer Information

Manufacturer: STEELCASE CORPORATION

Manufacturer's Technical Representative: Michael Abson

Mailing Address: 901 44th Street, Grand Rapids, MI. 49508

Telephone: On File Email: On File

Product Information

Product Name: Universal Storage Units

Product Type: Cabinet

Product Model Number: 6 Shelf Storage Cabinet, 5 Drawer Lateral File (30x24), 5 Drawer Lateral File (42x18) and 3 Drawer Combo Cabinet

General Description: Storage/File Cabinets

Applicant Information

Applicant Company Name: EASE Co.

Contact Person: Jonathan Roberson, S.E.

Mailing Address: 5877 Pine Ave. Suite 210, Chino Hills, CA. 91709

Telephone: (909) 606-7622 Email: J.Roberson@EASECo.com

I hereby agree to reimburse the Office of Statewide Health Planning and Development review fees in accordance with the California Administrative Code, 2016.

Signature of Applicant: [Signature] Date: 6/16/16

Title: Principal Engineer Company Name: EASE Co.

"Access to Safe, Quality Healthcare Environments that Meet California's Diverse and Dynamic Needs"





**OFFICE OF STATEWIDE HEALTH PLANNING AND DEVELOPMENT  
FACILITIES DEVELOPMENT DIVISION**

**Registered Design Professional Preparing Engineering Recommendations**

Company Name: EASE Co.

Name: Jonathan Roberson, S.E. California License Number: S4197

Mailing Address: 5877 Pine Ave. Suite 210, Chino Hills, CA. 91709

Telephone: 909-606-7622 Email: J.Roberson@EASECo.com

**OSHPD Special Seismic Certification Preapproval (OSP)**

- Special Seismic Certification is preapproved under OSP-  
(Separate application for OSP is required)
- Special Seismic Certification is not preapproved

**Certification Method(s)**

- Testing in accordance with:  ICC-ES AC156  FM 1950-16
- Other\* (Please Specify): \_\_\_\_\_

\*Use of criteria other than those adopted by the California Building Standards Code, 2016 (CBSC 2016) for component supports and attachments are not permitted. For distribution system, interior partition wall, and suspended ceiling seismic bracings, test criteria other than those adopted in the CBSC 2016 may be used when approved by OSHPD prior to testing.

- Analysis
- Experience Data
- Combination of Testing, Analysis, and/or Experience Data (Please Specify): \_\_\_\_\_

**List of Attachments Supporting the Manufacturer's Certification**

- Test Report  Drawings  Calculations  Manufacturer's Catalog
- Other(s) (Please Specify): \_\_\_\_\_

**OFFICE USE ONLY – OSHPD APPROVAL VALID FOR CBC 2016 & ALL PRE-2016 CODE BASED PROJECTS**

Signature: *William Staehlin* Date: 05-30-2017

Print Name: William Staehlin

Title: SSE

Condition of Approval (if applicable): \_\_\_\_\_

"Access to Safe, Quality Healthcare Environments that Meet California's Diverse and Dynamic Needs"





**EQUIPMENT ANCHORAGE  
& SEISMIC ENGINEERING**

5877 Pine Ave, Ste. 210  
Chino Hills, CA. 91709  
Phn: (909) 606-7622

Office of Statewide Health Planning and Development  
**PREAPPROVAL OF MANUFACTURER'S CERTIFICATION**  
**OPM-0361-13**

**THIS PREAPPROVAL CONFORMS TO THE 2016 CALIFORNIA BUILDING CODE**

MANUFACTURER: **STEELCASE, INC.**  
EQUIPMENT NAME: **UNIVERSAL STORAGE UNITS**

Sheet: 1 of 8  
Date: 5/22/17

**GENERAL NOTES**

1. THIS OSHPD PREAPPROVAL OF MANUFACTURER'S CERTIFICATION (OPM) IS BASED ON THE 2016 CBC. THE DEMANDS (DESIGN FORCES) FOR USE WITH THIS OPM SHALL BE BASED ON THE 2016 CBC
2. THIS DOCUMENT MAY ONLY BE USED WITH THE EXPRESS WRITTEN CONSENT OF THE MANUFACTURER LISTED ABOVE FOR THE SPECIFIC PROJECT SITE AND INSTALLATION LOCATION. THIS DOCUMENT IS INVALID WITHOUT SUCH CONSENT.
3. THIS PREAPPROVAL CONFORMS TO THE 2016 CALIFORNIA BUILDING CODE WHERE  $S_{ds}$  IS NOT GREATER THAN 0.75 & 0.35. SEE DETAIL FOR APPLICABILITY
4. FORCES PER ASCE 7-10 SECTION 13.3.1, EQUATIONS 13.3-1, 13.3-2 & 13.3-3,  
WHERE  $S_{ds} = 0.75$ ,  $a_p = 1.0$ ,  $I_p = 1.5$ ,  $R_p = 2.5$ ,  $z/h = 0$  AT CONCRETE SLAB. SEE FOLLOWING SHEETS FOR  $\Omega_o$   
WHERE  $S_{ds} = 0.35$ ,  $a_p = 1.0$ ,  $I_p = 1.5$ ,  $R_p = 2.5$ ,  $z/h \leq 1$  AT CONCRETE SLAB ON METAL DECK. SEE FOLLOWING SHEETS FOR  $\Omega_o$ .
5. THIS PREAPPROVAL COVERS ONLY THE SUPPORTS AND ATTACHMENTS OF THE EQUIPMENT TO THE STRUCTURE.
6. ALL DESIGN FORCES SHOWN ON THE DRAWINGS ARE FACTORED LOADS THAT SHALL BE USED FOR STRENGTH DESIGN.
7. CONCRETE SLAB ON METAL DECK DETAIL VALID FOR DEMANDS SHOWN AT ANY ELEVATION IN THE BUILDING. (i.e.  $z/h \leq 1$ )
8. CONCRETE SLAB ON GRADE DETAIL VALID FOR DEMANDS SHOWN AT ANY ELEVATION AT OR BELOW GRADE. (i.e.  $z/h = 0$ )
9. A MANUFACTURER PROVIDED PERMANENT PLAQUE MUST BE AFFIXED ON THE UNIT STATING THE FOLLOWING:  
"WEIGHT OF CONTENTS SHALL NOT EXCEED #### LB". "####" = CONTENT WEIGHT AS SHOWN IN TABLE ON SHEET 4 OF 8, MANUFACTURER TO COORDINATE. VERIFY IN FIELD BEFORE INSTALLATION.

**10. RESPONSIBILITIES OF THE STRUCTURAL ENGINEER OF RECORD OF THE BUILDING**

- A. PROVIDE SUPPORTING STRUCTURE TO SUPPORT WEIGHTS AND FORCES SHOWN IN ADDITION TO ALL OTHER LOADS.
- B. VERIFY THAT THE INSTALLATION IS IN CONFORMANCE WITH THE 2016 CBC AND WITH THE DETAILS, MATERIAL AND GAGE OF THE UNIT WHERE ATTACHMENTS ARE MADE AGREE WITH THE INFORMATION SHOWN ON THE PREAPPROVAL DOCUMENTS.
- C. VERIFY THAT PROJECT SPECIFIC VALUES OF  $S_{ds}$  &  $z/h$  RESULT IN SEISMIC FORCES ( $E_h$ ,  $E_v$ ) THAT DO NOT EXCEED THE VALUES ON THE DETAILS.
- D. VERIFY THAT THE CONCRETE SLAB TO WHICH THE EQUIPMENT IS ANCHORED MEETS THE REQUIREMENTS OF THE APPLICABLE ICC ESR AND THIS OPM.
- E. VERIFY THAT THE ANCHORS ARE AN ADEQUATE DISTANCE FROM ANY SLAB EDGES OR OPENINGS (SEE TYPICAL DETAIL ON SHEET 2).
- F. VERIFY THAT ALL NEW OR EXISTING ANCHORS ARE AN ADEQUATE DISTANCE FROM THE UNIT ATTACHMENTS AND CHECK FOR INTERACTION WHERE OTHER ANCHORS ARE WITHIN 18" OR  $6h_{ef}$  FROM THIS UNIT'S ANCHORS.



### STEELCASE, INC.

### UNIVERSAL STORAGE UNITS

DES. **J. ROBERSON**

JOB NO. **15-1601**

DATE **5/22/17**

SHEET

**2**

OF **8** SHEETS

#### 11. EXPANSION ANCHORS:

A. ATTACHMENT IS TO BE MADE WITH THE ANCHORS LISTED BELOW AND INSTALLED AS DESCRIBED IN THE CORRESPONDING ICC REPORT.

Anchor Diameter	Concrete Type	Min. f'c (psi)	Anchor Type	ICC Report No.	Min. Embed.	Min. Spacing	Min. Edge Dist.	Min. Conc. Thickness	Torque Test	Direct Tension Test
3/8"	Sand Light Weight	3000	Hilti Kwik Bolt TZ	ESR-1917	2"	6.75"	9"	See Detail "A"	25 FT-LB	N/A
3/8"	Normal Weight	3000	Hilti Kwik Bolt TZ	ESR-1917	2"	3"	9"	4"	25 FT-LB	1204 lb

B. THIS PREAPPROVAL ALLOWS FOR UP TO A MAXIMUM OF 2 ADJACENT CONCRETE SLAB EDGES, 9" AWAY MINIMUM (i.e. - CORNER). SEE ADJACENT DETAIL FOR ADDITIONAL MINIMUM ALLOWABLE CONCRETE EDGE DISTANCES.

C. TESTING OF EXPANSION ANCHORS PER 2016 CBC, 1910A.5: TESTING SHALL BE DONE IN THE PRESENCE OF THE SPECIAL INSPECTOR AND A REPORT OF THE TEST RESULTS SHALL BE SUBMITTED TO OSHPD

(i) AFTER AT LEAST 24 HOURS HAVE ELAPSED SINCE INSTALLATION, DIRECT PULL TENSION TEST OR TORQUE TEST AT LEAST 50% OF THE ANCHORS.

(ii) ACCEPTANCE CRITERIA:

- DIRECT TENSION TEST: THE ANCHOR SHOULD HAVE NO OBSERVABLE MOVEMENT AT THE TEST LOAD. A PRACTICAL WAY TO DETERMINE OBSERVABLE MOVEMENT IS THAT THE WASHER BECOMES LOOSE.
- TORQUE TEST: THE APPLICABLE TORQUE MUST BE ACHIEVED WITHIN THE FOLLOWING LIMITS: WEDGE TYPE : 1/2 TURN OF THE NUT

(iii) IF ANY ANCHOR FAILS, TEST ALL ANCHORS.

D. AVOID DAMAGING EXISTING STEEL REINFORCING IN CONCRETE SLAB WHEN INSTALLING CONCRETE EXPANSION ANCHORS.

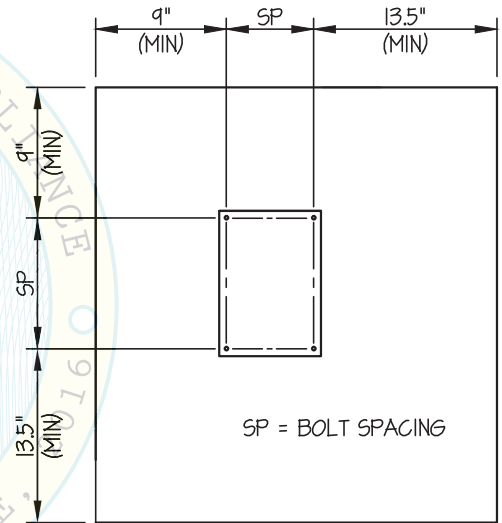
E. PROVIDE FOR FULL THREAD ENGAGEMENT OF NUT & WASHER.

#### 12. BOLTS THROUGH CONCRETE ON METAL DECK

A. BOLTS SHALL BE TORQUED BY 3/4 TURN OF THE NUTS AFTER THE SNUG TIGHT (THE SNUG-TIGHT CONDITION IS DEFINED AS THE TIGHTNESS REQUIRED TO BRING THE CONNECTED PLIES INTO FIRM CONTACT) CONDITION IS ACHIEVED, UNLESS OTHERWISE NOTED.

B. THROUGH BOLT HOLES SHALL BE 1/16" LARGER THAN BOLT SIZE (HOLE SIZE = BOLT SIZE + 1/16) FOR CONCRETE.

C. THROUGH-BOLTS IN CONCRETE SHALL RECEIVE SPECIAL INSPECTION AND TESTING (THROUGH BOLTS WITH STEEL TO STEEL CONNECTION IN TENSION DO NOT REQUIRE TENSION TESTING) IN ACCORDANCE WITH REQUIREMENTS FOR POST-INSTALLED ANCHORS.



TYPICAL CONCRETE EDGE DETAIL



### STEELCASE, INC.

### UNIVERSAL STORAGE UNITS

DES. J. ROBERSON

JOB NO. 15-1601

DATE 5/22/17

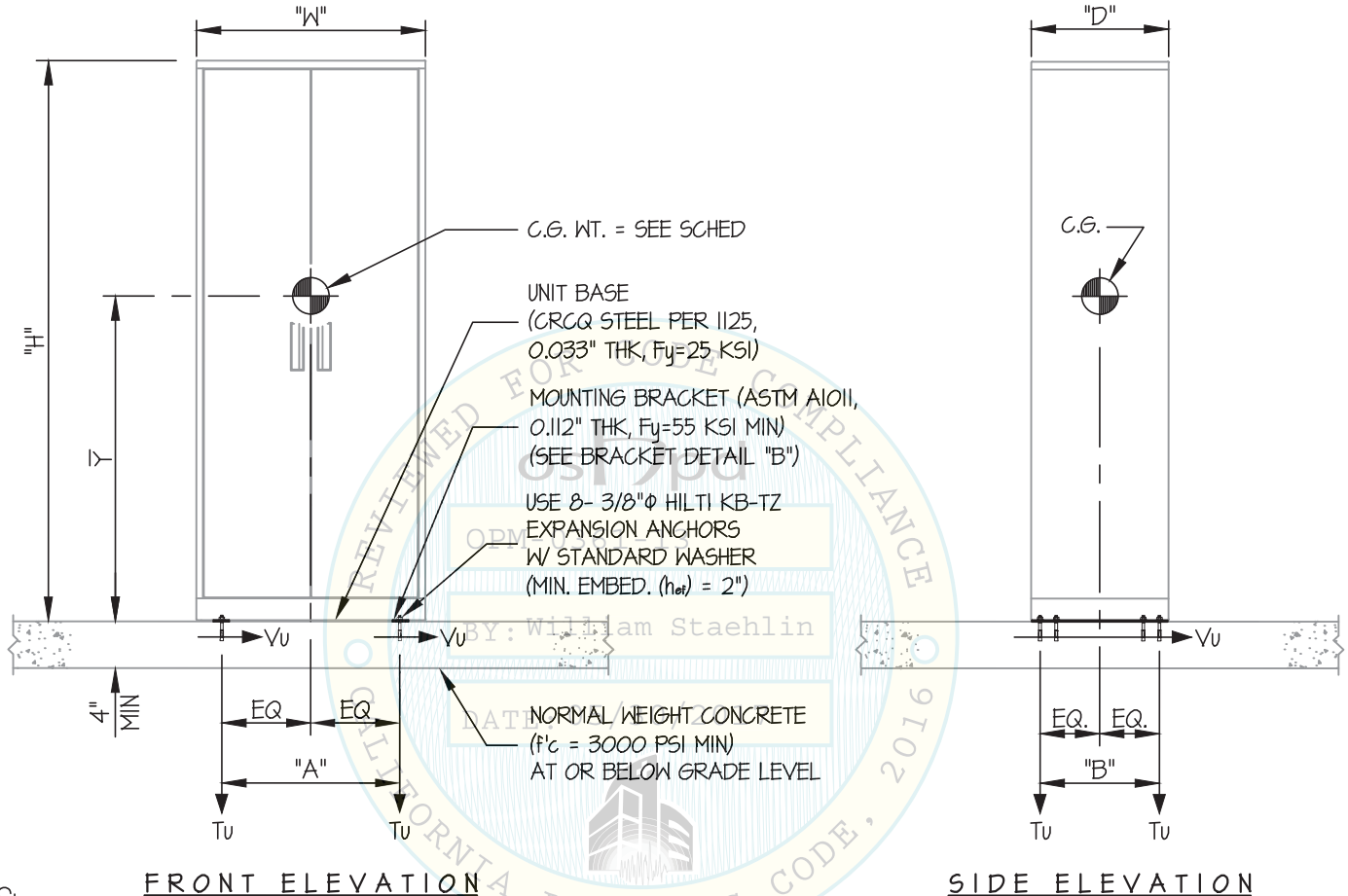
SHEET

# 3

OF 8 SHEETS

SEISMIC SUPPORTS & ATTACHMENTS

CONCRETE SLAB



**NOTES:**

1. FORCES ARE DETERMINED PER 2016 CALIFORNIA BUILDING CODE AND ASCE 7-10

STRENGTH DESIGN IS USED. ( $S_{ds} = 0.75$ ,  $a_p = 10$ ,  $l_p = 15$ ,  $R_p = 2.5$ ,  $\Omega_e = 2.0$ ,  $z/h = 0$ )

HORIZONTAL FORCE ( $E_h$ ) =  $0.338 W_p$

HORIZONTAL FORCE ( $E_{mh}$ ) =  $0.68 W_p$  (FOR CONCRETE ANCHORAGE)

VERTICAL FORCE ( $E_v$ ) =  $0.15 W_p$

2. CENTER OF GRAVITY (C.G.) AND WEIGHT ARE THE GOVERNING PARAMETERS FOR DESIGN. THIS PREAPPROVAL ENCOMPASSES ALL WEIGHTS UP TO THE MAXIMUM WEIGHT SHOWN.

3. STRUCTURAL ENGINEER OF RECORD FOR THE BUILDING SHALL PROVIDE SUPPORT STRUCTURE DESIGNED TO SUPPORT WEIGHTS AND FORCES SHOWN IN COMBINATION WITH ALL OTHER LOADS THAT MAY BE PRESENT.

4. SEE GENERAL NOTES: SHEETS 1 AND 2.



### STEELCASE, INC.

DES. **J. ROBERSON**

SHEET

# 4

### UNIVERSAL STORAGE UNITS

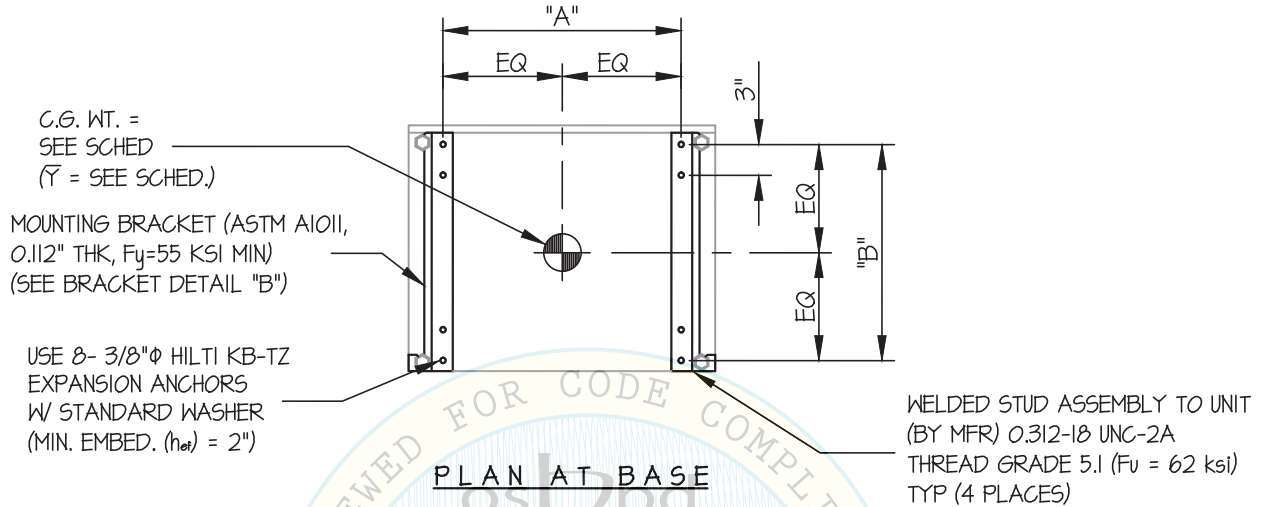
JOB NO. **15-1601**

DATE **5/22/17**

OF **8** SHEETS

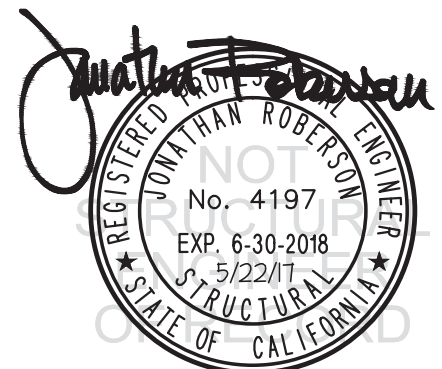
SEISMIC SUPPORTS & ATTACHMENTS

CONCRETE SLAB



UNIT DESCRIPTION	UNIT WEIGHT (lb.)	CONTENT WEIGHT (lb.)	TOTAL WEIGHT (lb.)	"H" (in.)	"W" (in.)	"D" (in.)	$\bar{Y}$ (in.)	"A" (in.)	"B" (in.)	** $T_u$ (lb.)	** $V_u$ (lb.)
6 SHELF STORAGE CABINET	215	807	1022	83.5	30	24	42.2	23.25	21.5	790	400
(30" WIDE) 5 DRAWER LATERAL FILE	190	547	737	65.5	30	24	32.7	23.25	21.5	410	288
(42" WIDE) 5 DRAWER LATERAL FILE	216	620	836	65.5	42	18	33.3	35.3	16.4	630	327
3 DRAWER COMBO CABINET	208	633	841	83.5	42	18	33.6	35.3	16.4	641	329

\*\* VALUES INCLUDE  $\Omega$



### STEELCASE, INC.

### UNIVERSAL STORAGE UNITS

DES. J. ROBERSON

JOB NO. 15-1601

DATE 5/22/17

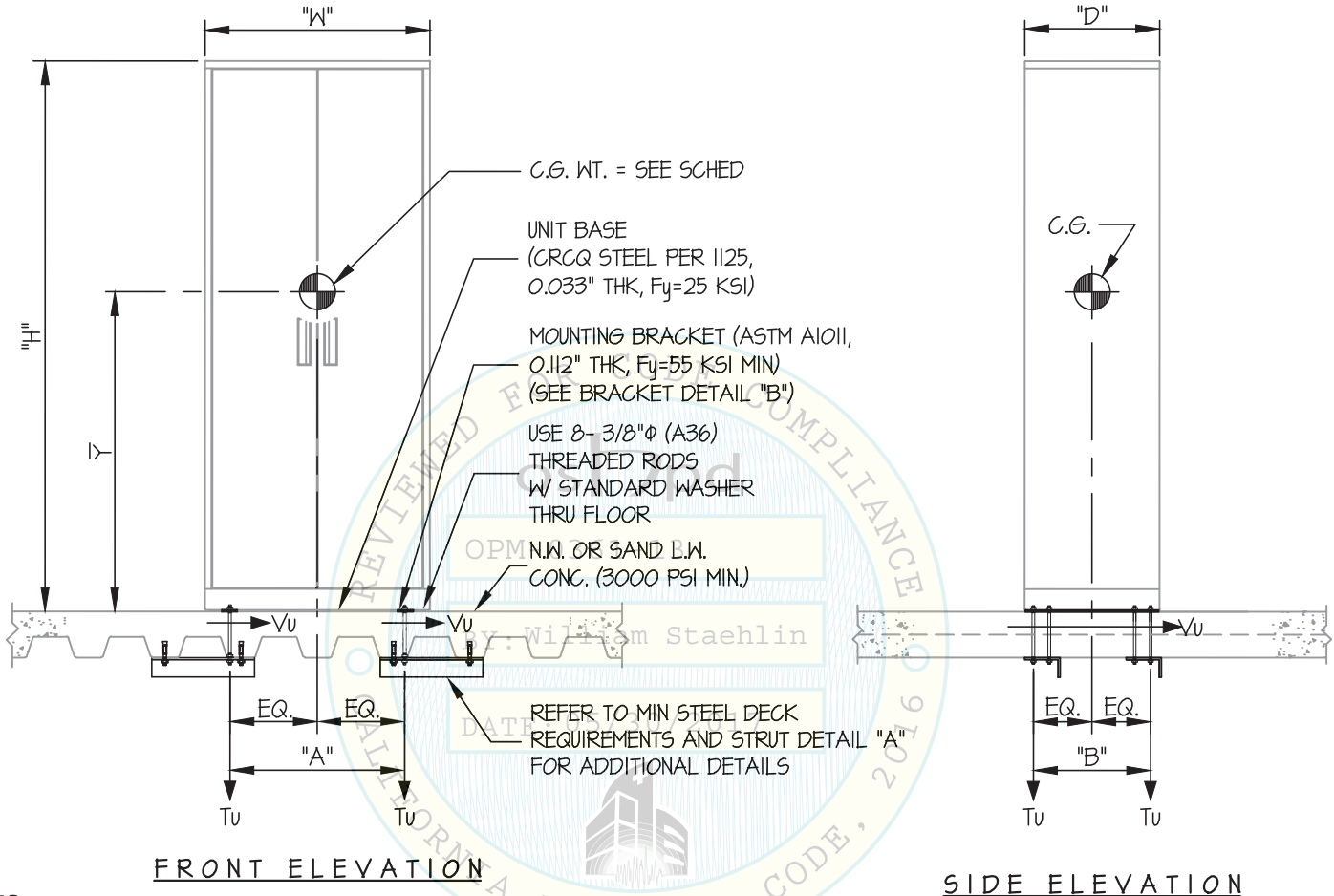
SHEET

# 5

OF 8 SHEETS

SEISMIC SUPPORTS & ATTACHMENTS

CONCRETE SLAB ON METAL DECK



NOTES:

1. FORCES ARE DETERMINED PER 2016 CALIFORNIA BUILDING CODE AND ASCE 7-10.

STRENGTH DESIGN IS USED. ( $S_Ds = 0.35$ ,  $\alpha_p = 1.0$ ,  $l_p = 1.5$ ,  $R_p = 2.5$ ,  $\Omega_o = 2.0$ ,  $z/h \leq 1$ )

HORIZONTAL FORCE ( $E_h$ ) =  $0.252 W_p$

HORIZONTAL FORCE ( $E_{mh}$ ) =  $0.504 W_p$  (FOR CONCRETE ANCHORAGE)

VERTICAL FORCE ( $E_v$ ) =  $0.07 W_p$

2. CENTER OF GRAVITY (C.G.) AND WEIGHT ARE THE GOVERNING PARAMETERS FOR DESIGN. THIS PREAPPROVAL ENCOMPASSES ALL WEIGHTS UP TO THE MAXIMUM WEIGHT SHOWN.

3. STRUCTURAL ENGINEER OF RECORD FOR THE BUILDING SHALL PROVIDE SUPPORT STRUCTURE DESIGNED TO SUPPORT WEIGHTS AND FORCES SHOWN IN COMBINATION WITH ALL OTHER LOADS THAT MAY BE PRESENT.



### STEELCASE, INC.

DES. **J. ROBERSON**

SHEET

# 6

### UNIVERSAL STORAGE UNITS

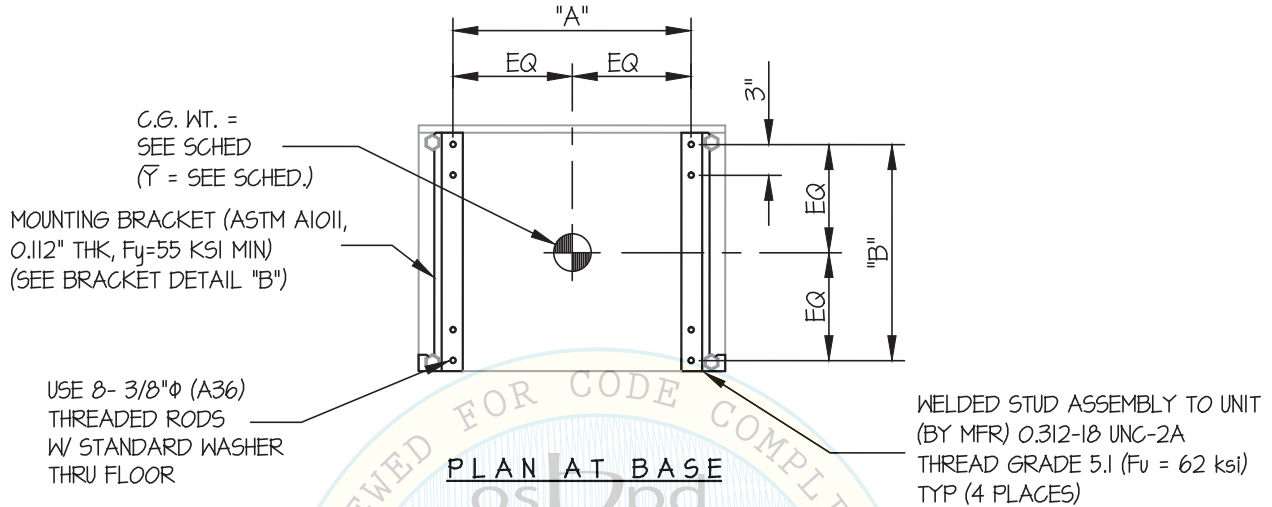
JOB NO. **15-1601**

DATE **5/22/17**

OF **8** SHEETS

SEISMIC SUPPORTS & ATTACHMENTS

CONCRETE SLAB ON METAL DECK



UNIT DESCRIPTION	UNIT WEIGHT (lb.)	CONTENT WEIGHT (lb.)	TOTAL WEIGHT (lb.)	"H" (in.)	"W" (in.)	"D" (in.)	$\bar{Y}$ (in.)	"A" (in.)	"B" (in.)	** T <sub>u</sub> (lb.)	** V <sub>u</sub> (lb.)
6 SHELF STORAGE CABINET	215	807	1022	835	30	24	42.2	23.25	21.5	152	148
(30" WIDE) 5 DRAWER LATERAL FILE	190	547	737	655	30	24	32.7	23.25	21.5	50	107
(42" WIDE) 5 DRAWER LATERAL FILE	216	620	836	655	42	18	33.3	35.3	16.4	118	121
3 DRAWER COMBO CABINET	208	633	841	835	42	18	33.6	35.3	16.4	121	122

\*\* VALUES INCLUDE  $\Omega$





### STEELCASE, INC.

### UNIVERSAL STORAGE UNITS

DES. **J. ROBERSON**

JOB NO. **15-1601**

DATE **5/22/17**

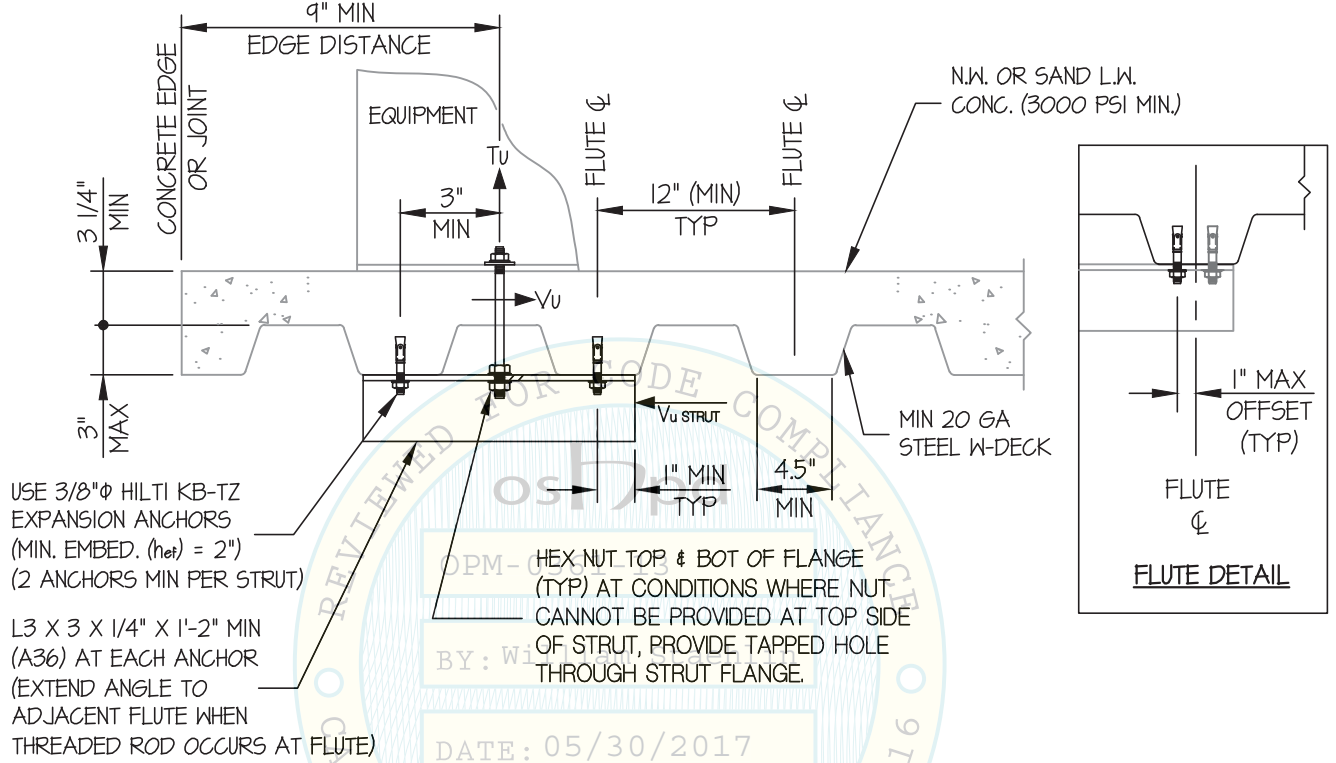
SHEET

**7**

OF **8** SHEETS

SEISMIC SUPPORTS & ATTACHMENTS

CONCRETE DETAILS



MIN STEEL DECK REQUIREMENTS AND STRUT DETAIL (A)



### STEELCASE, INC.

### UNIVERSAL STORAGE UNITS

DES. J. ROBERSON

JOB NO. 15-1601

DATE 5/22/17

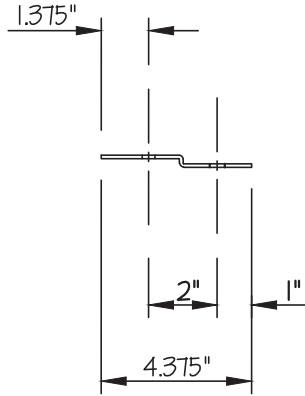
SHEET

# 8

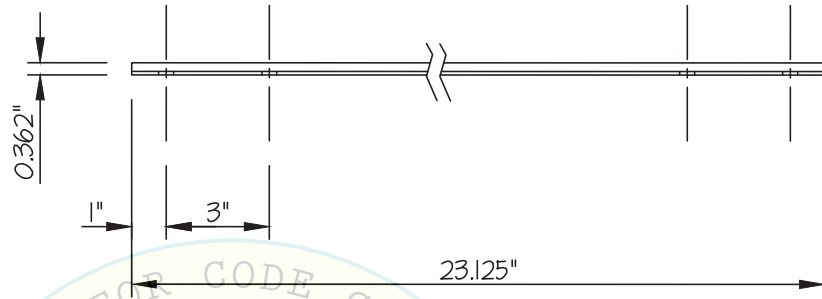
OF 8 SHEETS

SEISMIC SUPPORTS & ATTACHMENTS

BRACKET DETAILS



FRONT ANCHOR BRACKET



SIDE ANCHOR BRACKET

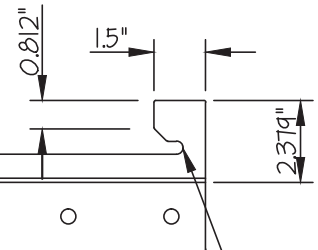
MOUNTING BRACKET (ASTM A1011, SS GR 55, 0.112" THK, Fy=55 KSI MIN) 51-13

BRACKET CLIP

BY: William Staehlin

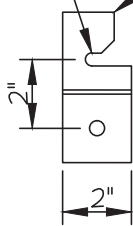
DATE: 05/30/2017

0.435"  $\phi$  HOLES



0.376"  $\phi$  HOLES

0.376"  $\phi$  HOLES



PLAN BRACKET CLIP

PLAN ANCHOR BRACKET

BRACKET DETAIL (B)

