



OFFICE OF STATEWIDE HEALTH PLANNING AND DEVELOPMENT
FACILITIES DEVELOPMENT DIVISION

APPLICATION FOR OSHPD PREAPPROVAL
OF MANUFACTURER'S CERTIFICATION (OPM)

OFFICE USE ONLY
APPLICATION #: OPM 0429-13

OSHPD Preapproval of Manufacturer's Certification (OPM)

Type: [X] New [] Renewal [] Update to Pre-CBC 2013 OPA Number:

Manufacturer Information

Manufacturer: Kimball International on behalf of Kimball Office and National Office Furniture

Manufacturer's Technical Representative: Ricardo Espinosa

Mailing Address: 1600 Royal St., Jasper, IN 47549-1001

Telephone: 812-482-8308 Email: ricardo.espinosa@kimball.com

Product Information

Product Name: KO overhead storage, open shelves & hutches, NOF overhead storage, open shelves & hutches

Product Type: Wood Construction and Sheet Metal Construction, Wall mounted Storage Cabinets

Product Model Number: Configurations for 16" deep max. by 17" high max. by 24" through 72" long;
Backing is steel bar or 3/4" Particleboard

General Description: Overhead Wall Storage Cabinets; Overhead Wall Open Shelves Cabinets & Overhead Wall
Mounted, Desk supported Hutch Cabinets.

Applicant Information

Applicant Company Name: Kimball International on behalf of Kimball Office and National Office Furniture

Contact Person: Ricardo Espinosa

Mailing Address: 1600 Royal St., Jasper, IN 47549-1001

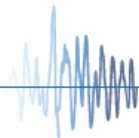
Telephone: 812-482-8308 Email: ricardo.espinosa@kimball.com

I hereby agree to reimburse the Office of Statewide Health Planning and Development review fees in
accordance with the California Administrative Code, 2016.

Signature of Applicant: [Handwritten Signature] Date: 05/11/2017

Title: R&D Engineering Manager Company Name: Kimball International, Inc.

Access to Safe, Quality Healthcare Environments that Meet California's Diverse and Dynamic Needs





OFFICE OF STATEWIDE HEALTH PLANNING AND DEVELOPMENT
FACILITIES DEVELOPMENT DIVISION

Registered Design Professional Preparing Engineering Recommendations

Company Name: ZFA STRUCTURAL ENGINEERS
Name: Mark A Moore, SE California License Number: SE 4443
Mailing Address: 601 Montgomery Street Suite 1450, San Francisco, CA 94111
Telephone: (415)243-4091 x 201 Email: markm@zfa.com; ryanb@zfa.com; mickeyk@zfa.com

OSHPD Special Seismic Certification Preapproval (OSP)

- Special Seismic Certification is preapproved under OSP- (Separate application for OSP is required)
Special Seismic Certification is not preapproved

Certification Method(s)

- Testing in accordance with: ICC-ES AC156 FM 1950-16
Other* (Please Specify):

*Use of criteria other than those adopted by the California Building Standards Code, 2016 (CBSC 2016) for component supports and attachments are not permitted. For distribution system, interior partition wall, and suspended ceiling seismic bracings, test criteria other than those adopted in the CBSC 2016 may be used when approved by OSHPD prior to testing.

- Analysis
Experience Data
Combination of Testing, Analysis, and/or Experience Data (Please Specify):

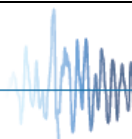
List of Attachments Supporting the Manufacturer's Certification

- Test Report Drawings Calculations Manufacturer's Catalog
Other(s) (Please Specify):

OFFICE USE ONLY - OSHPD APPROVAL VALID FOR CBC 2016 & ALL PRE-2016 CODE BASED PROJECTS

Signature: Jeffrey Kikumoto Date: January 02, 2019
Print Name: Jeffrey Kikumoto
Title: SSE
Condition of Approval (if applicable):

"Access to Safe, Quality Healthcare Environments that Meet California's Diverse and Dynamic Needs"



Equipment Manufacturer: Kimball International <small>KimballOffice NATIONAL KimballHospitality</small>	Kimball International, Inc. on behalf of Kimball Office and National Office Furniture	OPM-0429-13
ZFA STRUCTURAL ENGINEERS 601 Montgomery St. Suite 1450 San Francisco CA, 94111 ph. 415 243 4091 zfa.com	Job No. 34028	Sheet 1 of 8
	Date: May. 19, 2017	
Equipment Type: WALL MOUNT OVERHEAD STORAGE, SHELVES & HUTCHES		

TABLE OF CONTENTS

General Notes	1
MOUNTING OPTION 1 - Metal Construction Body	2, 3
MOUNTING OPTION 2 - Wood Construction Body $H \leq 18.5"$	4, 5
MOUNTING OPTION 3 - Wood Construction Body $H \geq 18.5"$	6, 7
MODEL NUMBERS	8

GENERAL NOTES

1. THIS OSHPD PRE-APPROVAL OF MANUFACTURER'S CERTIFICATION (OPM) IS BASED ON THE CBC 2016. THE DEMAND (DESIGN FORCES) FOR USE WITH THIS OPM SHALL BE BASED ON CBC 2016.
2. FORCES PER ASCE 7-10 SECTION 13.3.1, EQUATIONS 13.3-1, 13.3-2 & 13.3-3, WHERE $S_{Ds} = 2.0$, $a_p = 1.0$, $I_p = 1.5$, $R_p = 2.5$, $z/h \leq 1.0$
3. THIS PRE-APPROVAL CONFORMS TO THE 2016 CALIFORNIA BUILDING CODE.
4. THE DETAILS IN THIS PRE-APPROVAL MAY BE USED AT ANY LOCATION IN THE STATE OF CALIFORNIA, WHERE S_{Ds} IS NOT GREATER THAN 2.0.
5. ALL ANCHOR FORCES SHOWN ON THE DRAWINGS ARE UNFACTORED LOADS THAT SHALL BE USED FOR ALLOWABLE STRESS DESIGN.
6. SHEET METAL SCREWS SHALL BE TEKS SCREWS (ICC ESR-1976). MINIMUM EDGE DISTANCE, SPACING AND EMBEDMENT THROUGH STUDS PER ICC REPORT.
7. THIS PRE-APPROVAL COVERS ONLY THE SUPPORT & ATTACHMENTS OF THE UNIT TO THE STRUCTURE.

RESPONSIBILITIES OF THE STRUCTURAL ENGINEER OF RECORD OF THE BUILDING

8. DESIGN BACKING BARS, WALL STUDS, ETC. WHICH THE UNITS ARE ATTACHED TO AS NOTED ON THE DRAWINGS.
9. THE SEOR SHALL ALSO VERIFY THE ADEQUACY OF THE STRUCTURES (SUCH AS WALLS AND FLOORS) WHICH SUPPORT THE UNITS FOR THE LOADS IMPOSED ON THEM BY THE UNITS AS WELL AS ALL OTHER LOADS.
10. PROVIDE SUPPORTING STRUCTURE REQUIRED TO SUPPORT WEIGHTS AND FORCES SHOWN, IN ADDITION TO ALL OTHER LOADS.
11. VERIFY THAT THE INSTALLATION IS IN CONFORMANCE WITH THE 2016 CBC AND WITH THE DETAILS SHOWN IN THIS PRE-APPROVAL. VERIFY THAT THE ACTUAL EQUIPMENT'S WEIGHT, CG LOCATION, ANCHOR LOCATIONS, ANCHOR DETAILS AND THE MATERIAL AND GAGE OF THE UNIT WHERE ATTACHMENTS ARE MADE AGREE WITH THE INFORMATION SHOWN ON THE PRE-APPROVAL DOCUMENTS
12. VERIFY THAT THE COMBINATION OF S_{Ds} & z/h RESULT IN SEISMIC FORCES (E_h , E_v) THAT ARE NOT GREATER THAN THE VALUES ON THE DETAILS.



ZFA STRUCTURAL ENGINEERS

601 Montgomery St. Suite 1450 | San Francisco CA, 94111 | ph. 415 243 4091 | zfa.com

Job No. 34028

Date: May. 19, 2017

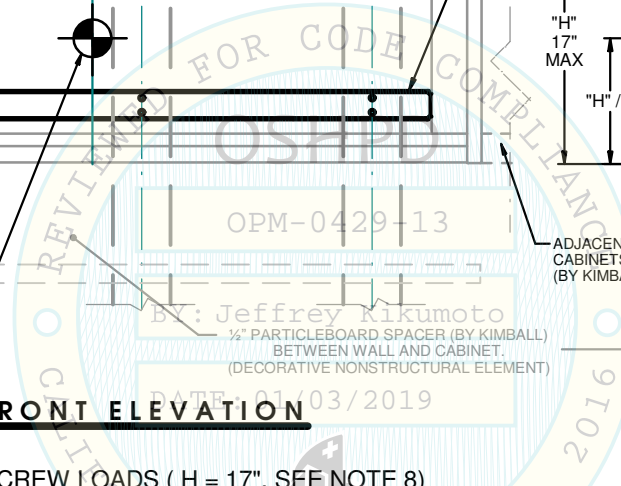
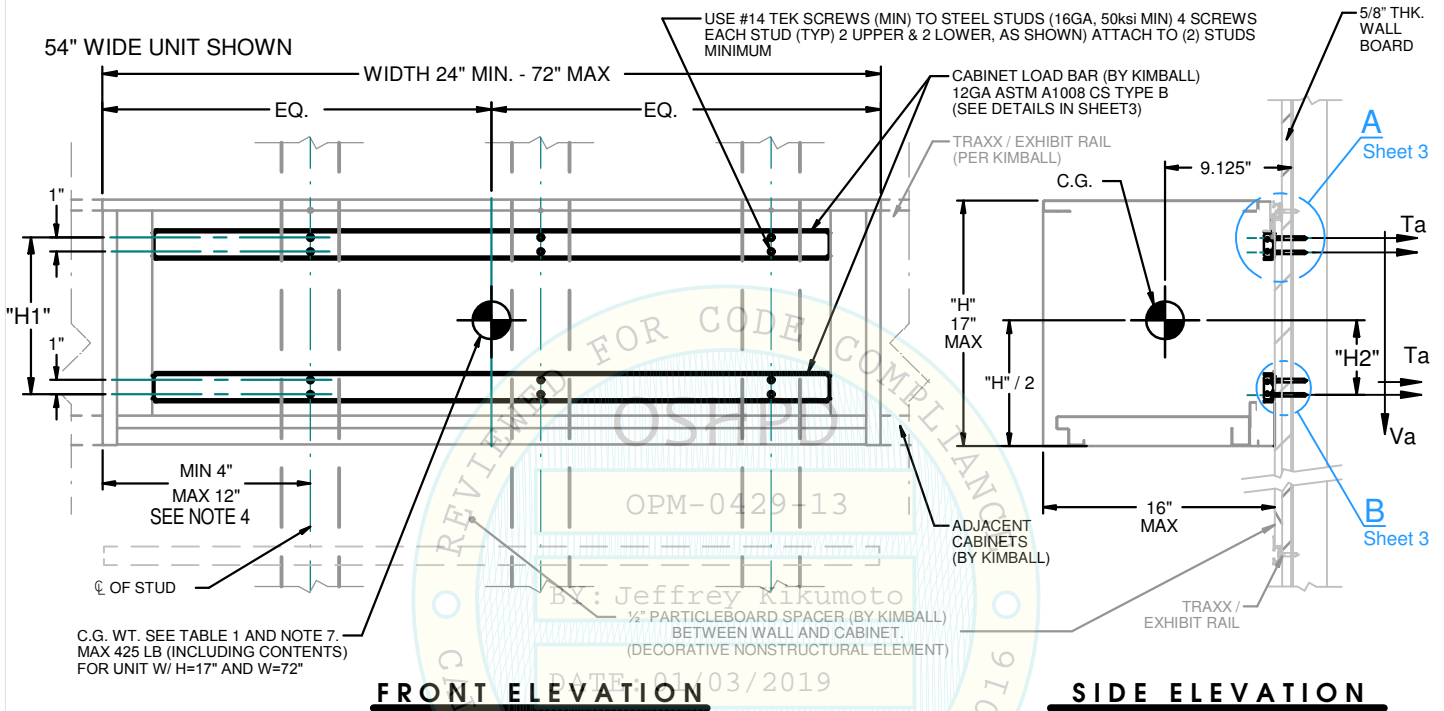
Sheet
2
 of 8

Equipment Type:

WALL MOUNT OVERHEAD STORAGE, SHELVES & HUTCHES

SEISMIC SUPPORTS & ATTACHMENTS – WALL MOUNTED

OPTION1 - Metal Construction Body - Backing is steel bar. See sheet 8 for Model Numbers



DIM "H"

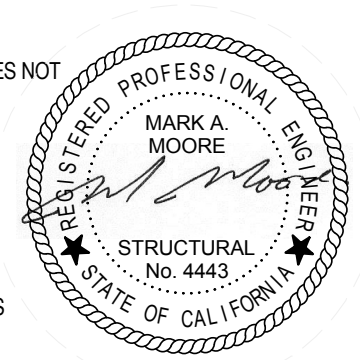
H	H ₁	H ₂
6"	3"	0.7"
9"	3.5"	1.8"
14"	8"	3.6"
15"	9"	4.1"
17"	11"	5.2"

TABLE 1 MAX SCREW LOADS (H = 17", SEE NOTE 8)

CABINET WIDTH (in)	24	30	36	42	48	54	60	66	72
STUDS SPACED OC (IN)	12 16	12 16	12 16 24	12 16 24	12 16 24	12 16 24	12 16 24	12 16 24	12 16 24
WALL STUDS ENGAGED "Z"	2 2	2 2	3 2 2	3 3 2	4 3 2	4 3 2	5 4 3	5 4 3	5 4 3
TOTAL LOADED WEIGHT (LB)	145	180	216	249	283	316	360	391	425
MAX STORAGE WEIGHT (LB)	110	139	169	198	227	256	286	315	344
T _A (ASD) (LB/SCREW)	71 64	95 84	68 106 92	91 68 110	66 87 130	89 109 67	75 91 89	94 109 113	116 127
V _A (ASD) (LB/SCREW)	32 30	42 39	32 49 45	41 33 53	31 41 62	40 50 32	37 47 40	44 54 50	53 73

NOTES:

- SUPPORTS & ATTACHMENTS DESIGN PER THE 2016 CALIFORNIA BUILDING CODE AND ASCE 7-10. ALLOWABLE STRESS DESIGN IS USED. UNFACTORED HORIZONTAL FORCE (E_h) = 1.44 W_p (SDS=2.0, a_p=1.0, I_p=1.5 & R_p=2.5, z/h ≤ 1.0). UNFACTORED VERTICAL FORCE (E_v) = 0.40 W_p
- CENTER OF GRAVITY (C.G.) WEIGHT IS A MAXIMUM. THIS OPM ENCOMPASSES ALL WEIGHTS UP TO THE MAXIMUM WEIGHT SHOWN.
- STRUCTURAL ENGINEER OF RECORD FOR THE BUILDING SHALL PROVIDE SUPPORT STRUCTURE DESIGNED TO SUPPORT WEIGHTS AND FORCES SHOWN, IN ADDITION TO ALL OTHER LOADS.
- STRUCTURAL ENGINEER OF RECORD SHALL DESIGN A WALL BACKING PLATE (16GA, 50KSI MIN) IF THE UNIT DOES NOT ENGAGE AT LEAST "Z" STUDS OR IF THE UNIT EXTENDS LESS THAN 4" OR MORE THAN 12" PAST THE LAST WALL STUD OC. CABINET INSTALLATION MUST BE ADJUSTED TO MAINTAIN THE MIN AND MAX DISTANCE SPECIFIED.
- SEE GENERAL NOTES IN SHEET 1
- ALL SCREWS ARE #14 TEKS SCREWS UNLESS NOTED OTHERWISE
- THE C.G. OF THE UNIT MAY OCCUR AT ANY LOCATION BETWEEN THE WALL STUDS. A BACKING PLATE WILL BE REQUIRED FOR CONDITIONS NOT CONFORMING THE PROVISIONS OF NOTE 4.
- CABINET LOAD IS LIMITED TO THE MAX STORAGE WEIGHT LISTED IN TABLE 1. CABINETS MUST BE LABELED WITH A SIGN STATING THE MAX. STORAGE WEIGHT LIMITATION. TOTAL LOAD INCLUDES ALL UNIT COMPONENTS (DOORS, DRAWERS, ETC.) AND CONTENTS. THE TABLE INCLUDED IN THIS OPM IS A WORST CASE CONDITION.
- INTERMEDIATE SHELVES ARE NOT APPROVED UNLESS NOTED OTHERWISE; SEE NOTE ON SHEET 8.



ZFA STRUCTURAL ENGINEERS

Job No. 34028

Sheet

601 Montgomery St. Suite 1450 | San Francisco CA, 94111 | ph. 415 243 4091 | zfa.com

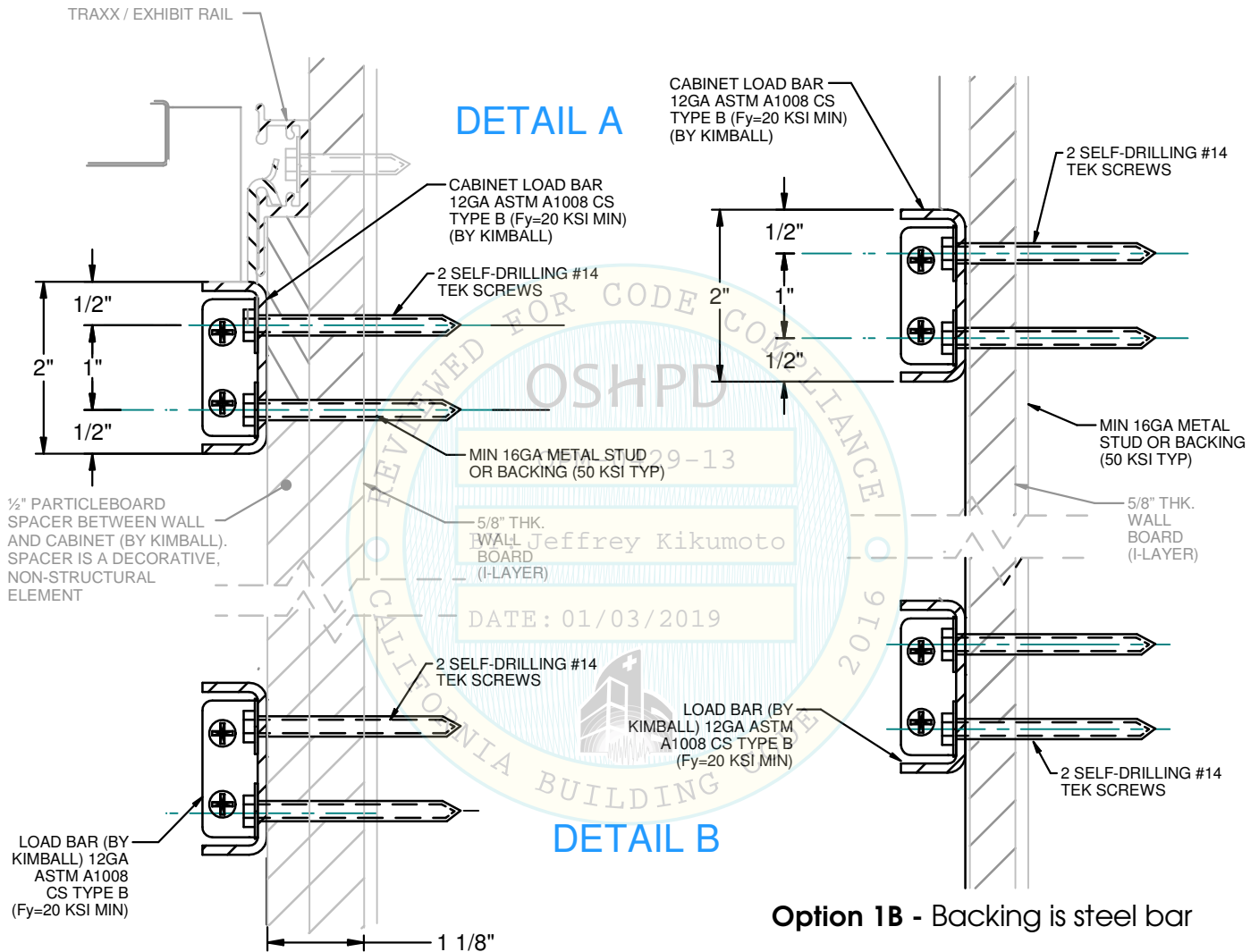
Date: May. 19, 2017

3
of 8

Equipment Type:

WALL MOUNT OVERHEAD STORAGE, SHELVES & HUTCHES

SEISMIC SUPPORTS & ATTACHMENTS - WALL MOUNTED - Option1 - Metal Construction Body

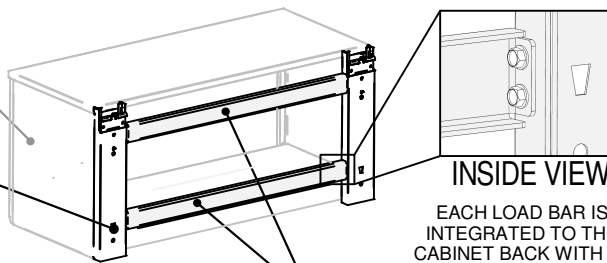


TRAXX/EXHIBIT ASSEMBLY IS NOT CONSIDERED A STRUCTURAL
 ELEMENT, NOR IS IT AN INTEGRAL COMPONENT TO THE
 CABINET ATTACHMENTS.

CABINET BACK VIEW

SHEET METAL
 CABINET BODY

CABINET BACK IS AN
 INTEGRAL PART OF UNIT.
 MATERIAL: 18GA ASTM
 A1008 CS TYPE B
 (Fy=20 KSI MIN)



LOAD BAR (BY KIMBALL)
 PN VARIES BY CABINET LENGTH
 MATERIAL: 12GA ASTM A1008 CS TYPE B (Fy=20 KSI MIN)



ZFA STRUCTURAL ENGINEERS

Job No. 34028

Sheet

Date: May, 19, 2017

4
of 8

601 Montgomery St. Suite 1450 | San Francisco CA, 94111 | ph. 415 243 4091 | zfa.com

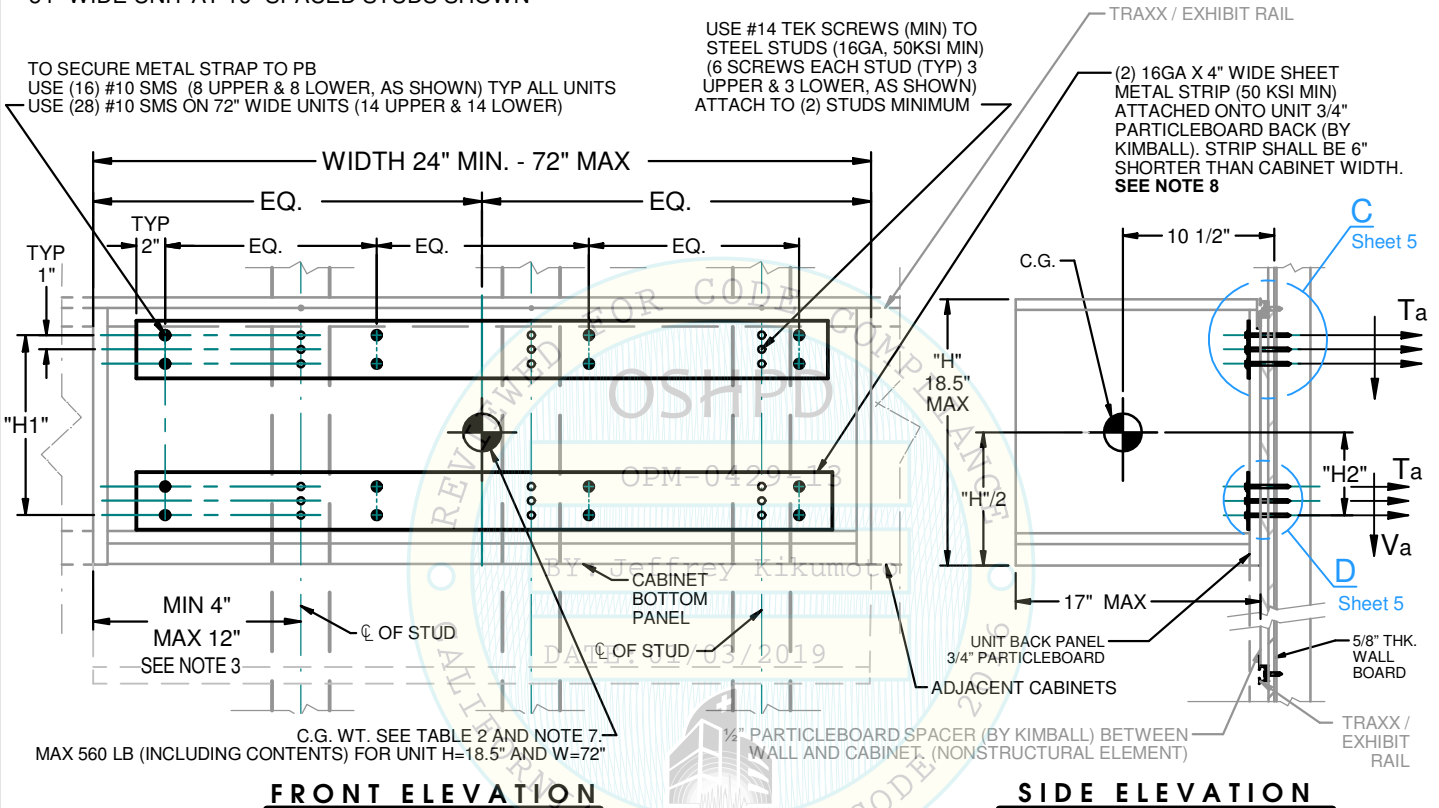
Equipment Type:

WALL MOUNT OVERHEAD STORAGE, SHELVES & HUTCHES

SEISMIC SUPPORTS & ATTACHMENTS – WALL MOUNTED

Option 2 - Wood Construction Body, Backing is GA16 metal strip on 3/4" Particleboard - See sheet 8 for Model Numbers

54" WIDE UNIT AT 16" SPACED STUDS SHOWN



FRONT ELEVATION

SIDE ELEVATION

DIM "H"

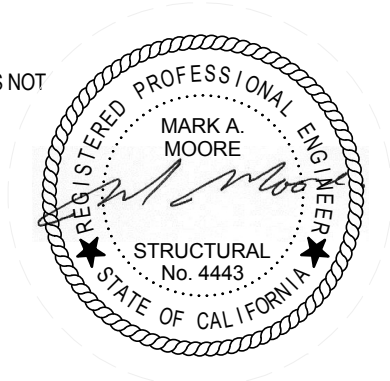
TABLE 2 MAX SCREW LOADS (H = 18.5", SEE NOTE 5)

H	H ₁	H ₂
10"	5"	1.5"
13"	7"	3.1"
14"	8"	3.6"
15"	9"	4.1"
16"	10"	4.6"
17"	11"	5.1"
18.5"	12.5"	5.8"

CABINET WIDTH (in)	24	30	36	42	48	54	60	66	72	
STUDS SPACED OC (IN)	12 16	12 16	12 16 24	12 16 24	12 16 24	12 16 24	12 16 24	12 16 24	12 16 24	
WALL STUDS ENGAGED	2 2	2 2 3	2 3 3 2	4 3 2	4 3 5	4 3 5	5 4 3	5 4 3	5 4 3	
TOTAL LOADED WEIGHT (LB)	196	247	279	337	387	415	456	508	560	
MAX STORAGE WEIGHT (LB)	141	179	217	254	292	330	368	405	443	
T _A (ASD) (LB/SCREW)	65 59	88 78	60 93 81 83	62 100	61 81 120	78 96 57	64 78 78	83 95 102	104 114	
V _A (ASD) (LB/SCREW)	29 27	38 36	27 42	39 37	30 48	28 38 57	35 44 27	31 40 35	39 47 44	47 55

NOTES:

- SEE NOTES 1 TO 3 IN SHEET 2
- 24" STUD SPACING IS NOT PERMITTED FOR 24", 30" AND 54" CABINETS.
- STRUCTURAL ENGINEER OF RECORD SHALL DESIGN A WALL BACKING PLATE (16GA, 50KSI MIN) IF THE UNIT DOES NOT ENGAGE AT LEAST "Z" STUDS OR IF THE UNIT EXTENDS LESS THAN 4" OR MORE THAN 12" PAST THE LAST WALL STUD OC.
- CABINET INSTALLATION MUST BE ADJUSTED TO MAINTAIN MIN AND MAX DISTANCE SPECIFIED.
- CABINET LOAD IS LIMITED TO THE MAX STORAGE WEIGHT LISTED IN TABLE 2. CABINETS MUST BE LABELED WITH A SIGN STATING THE MAX. STORAGE WEIGHT LIMITATION. TOTAL LOAD INCLUDES ALL UNIT ELEMENTS (DOORS, DRAWERS, ETC.) AND CONTENTS. THE TABLE INCLUDED IN THIS OPM IS A WORST CASE CONDITION.
- INTERMEDIATE SHELVES ARE NOT APPROVED UNLESS NOTED OTHERWISE; SEE NOTE ON SHEET 8.
- THE C.G. OF THE UNIT MAY OCCUR AT ANY LOCATION BETWEEN THE WALL STUDS. A BACKING PLATE WILL BE REQUIRED FOR CONDITIONS NOT CONFORMING THE PROVISIONS OF NOTE 5.
- FOR UNITS WITH H=10", USE A 3" WIDE STRAP AND REDUCE SCREW SPACING TO 3/4" MIN.



ZFA STRUCTURAL ENGINEERS

Job No. 34028

Sheet

601 Montgomery St. Suite 1450 | San Francisco CA, 94111 | ph. 415 243 4091 | zfa.com

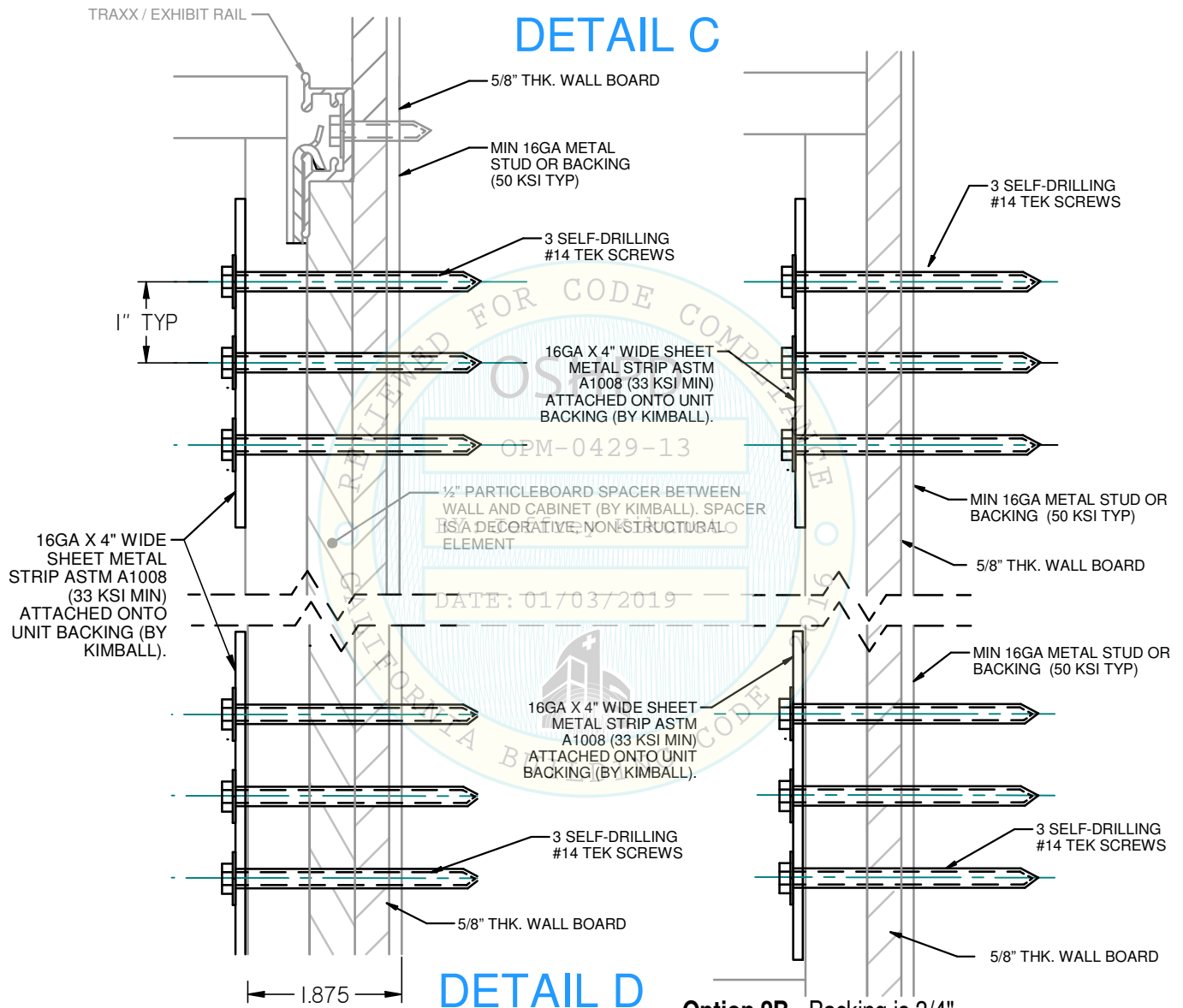
Date: May. 19, 2017

5
of 8

Equipment Type:

WALL MOUNT OVERHEAD STORAGE, SHELVES & HUTCHES

SEISMIC SUPPORTS & ATTACHMENTS - WALL MOUNTED



Option 2A - Backing is 3/4" PB

MOUNTING THROUGH TRAXX / EXHIBIT ASSEMBLY

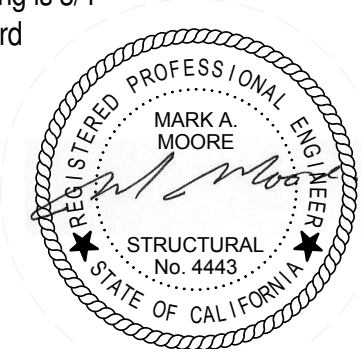
Option 2B - Backing is 3/4" Particleboard

TRAXX/EXHIBIT ASSEMBLY IS NOT CONSIDERED A STRUCTURAL ELEMENT, NOR IS IT AN INTEGRAL COMPONENT TO THE CABINET ATTACHMENTS.

	#10	#12	#14
A'	Max 0.312"	0.312"	0.375"
A'	Min 0.305"	0.305"	0.367"
W	Max 0.340"	0.340"	0.409"
W	Min 0.120"	0.155"	0.190"
H	Max 0.105"	0.139"	0.172"
F	Max 0.414"	0.432"	0.520"
F	Min 0.384"	0.398"	0.480"
U	Max 0.031"	0.039"	0.050"
U	Min 0.019"	0.022"	0.030"

Washer size and thickness typical

TEK SCREW ITW Buildex (ICC ESR-1976)



ZFA STRUCTURAL ENGINEERS

Job No. 34028

Sheet

601 Montgomery St. Suite 1450 | San Francisco CA, 94111 | ph. 415 243 4091 | zfa.com

Date: May. 19, 2017

6
of 8

Equipment Type:

WALL MOUNT OVERHEAD STORAGE, SHELVES & HUTCHES

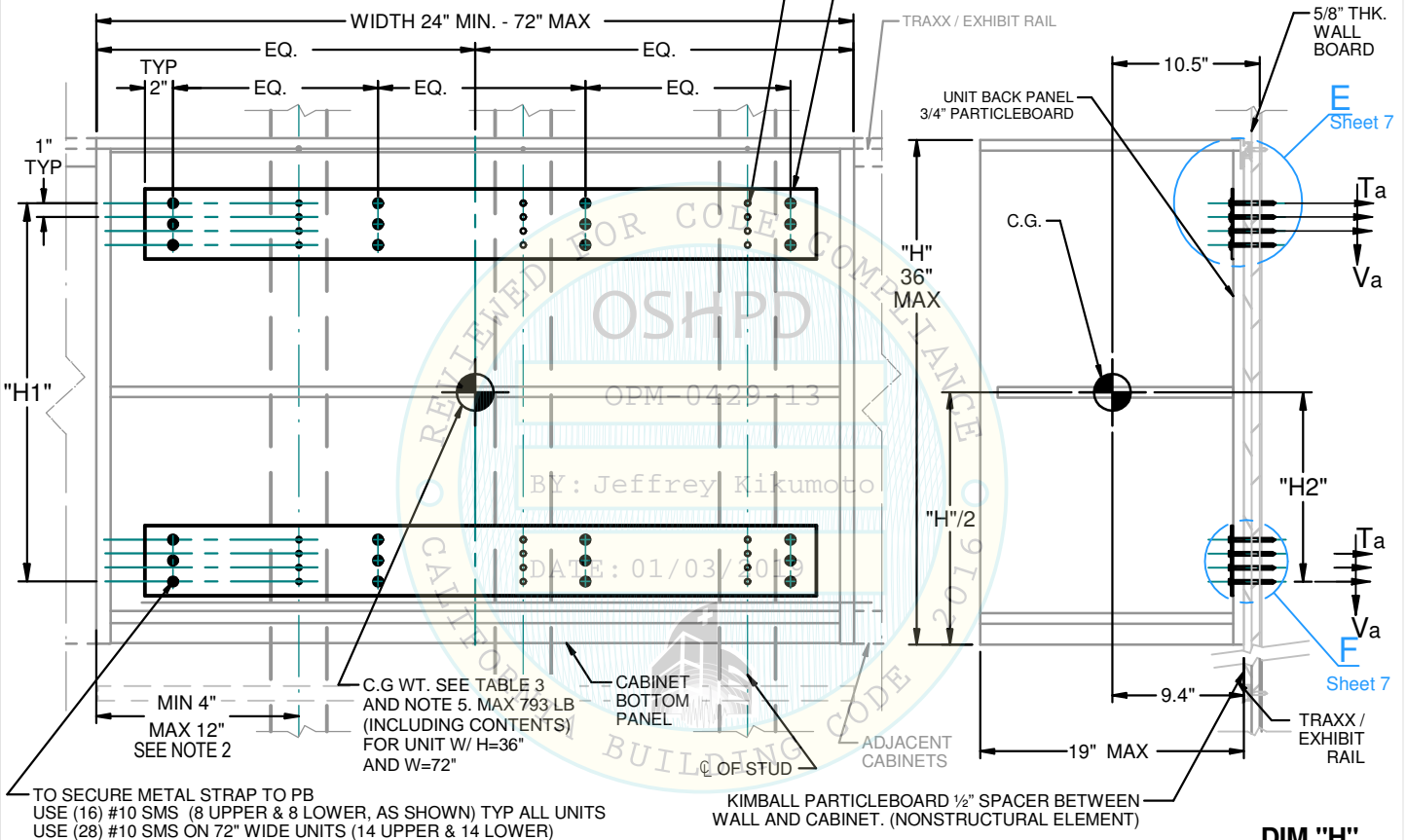
SEISMIC SUPPORTS & ATTACHMENTS – WALL MOUNTED

Option 3 - Wood Construction Body, Backing is GA16 metal strip on 3/4" Particleboard - See sheet 8 for Model Numbers

54" WIDE UNIT SHOWN

USE #14 TEK SCREWS (MIN) TO STEEL STUDS (16GA, 50KSI MIN) (8 SCREWS EACH STUD) (TYP) 4 UPPER & 4 LOWER, AS SHOWN) ATTACH TO (2) STUDS MINIMUM

TWO 16GA X 5" WIDE SHEET METAL STRIP (33 KSI MIN) ATTACHED ONTO UNIT BACKING (BY KIMBALL). PLATE SHALL BE 6" SHORTER THAN CABINET WIDTH



FRONT ELEVATION

SIDE ELEVATION

TABLE 3 MAX SCREW LOADS (H = 36", SEE NOTE 4)

CABINET WIDTH (in)	24	30	36	42	48	54	60	66	72
STUDS SPACED OC (IN)	12 16	12 16	12 16 24	12 16 24	12 16 24	12 16 24	12 16 24	12 16 24	12 16 24
WALL STUDS ENGAGED	2 2	2 2	3 2 2	3 3 2	4 3 2	4 3	5 4 3	5 4 3	5 4 3
TOTAL LOADED WT. (LB)	291	362	403	486	556	590	647	720	793
MAX STORAGE WT. (LB)	200	250	300	350	400	450	500	550	600
Ta (ASD) (LB/SCREW)	51 45	67 59	45 69 59	61 46 74	45 59 88	57 70	42 46 56	56 59 68	73 74 81
Va (ASD) (LB/SCREW)	55 55	42 69	51 46 42	40 33 52	31 41 61	37 47	28 33 42	37 41 50	47 50 58

DIM "H"

H	H ₁	H ₂
20"	11"	5.5"
24"	15"	7.5"
30"	21"	10.5"
33"	24"	12.0"
36"	27"	13.5"

NOTES:

- 24" STUD SPACING IS NOT PERMITTED FOR 24", 30" AND 54"CABINETS.
- STRUCTURAL ENGINEER OF RECORD SHALL DESIGN A BACKING PLATE (16GA, 50KSI MIN) IF THE UNIT DOES NOT ENGAGE AT LEAST "Z" STUDS OR IF THE UNIT EXTENDS LESS THAN 4" OR MORE THAN 12" PAST THE LAST WALL STUD OC. CABINET INSTALLATION MUST BE ADJUSTED TO MAINTAIN THE MIN AND MAX DISTANCE SPECIFIED.
- CABINET LOAD IS LIMITED TO THE MAX STORAGE WEIGHT LISTED IN TABLE 3. CABINETS MUST BE LABELED WITH A SIGN STATING THE MAX. STORAGE WEIGHT LIMITATION. TOTAL LOAD INCLUDES ALL UNIT ELEMENTS (DOORS, DRAWERS, ETC.) AND CONTENTS. THE TABLE INCLUDED IN THIS OPM IS A WORST CASE CONDITION.
- THE C.G OF THE UNIT MAY OCCUR AT ANY LOCATION BETWEEN THE WALL STUDS.



ZFA STRUCTURAL ENGINEERS

Job No. 34028

Sheet

601 Montgomery St. Suite 1450 | San Francisco CA, 94111 | ph. 415 243 4091 | zfa.com

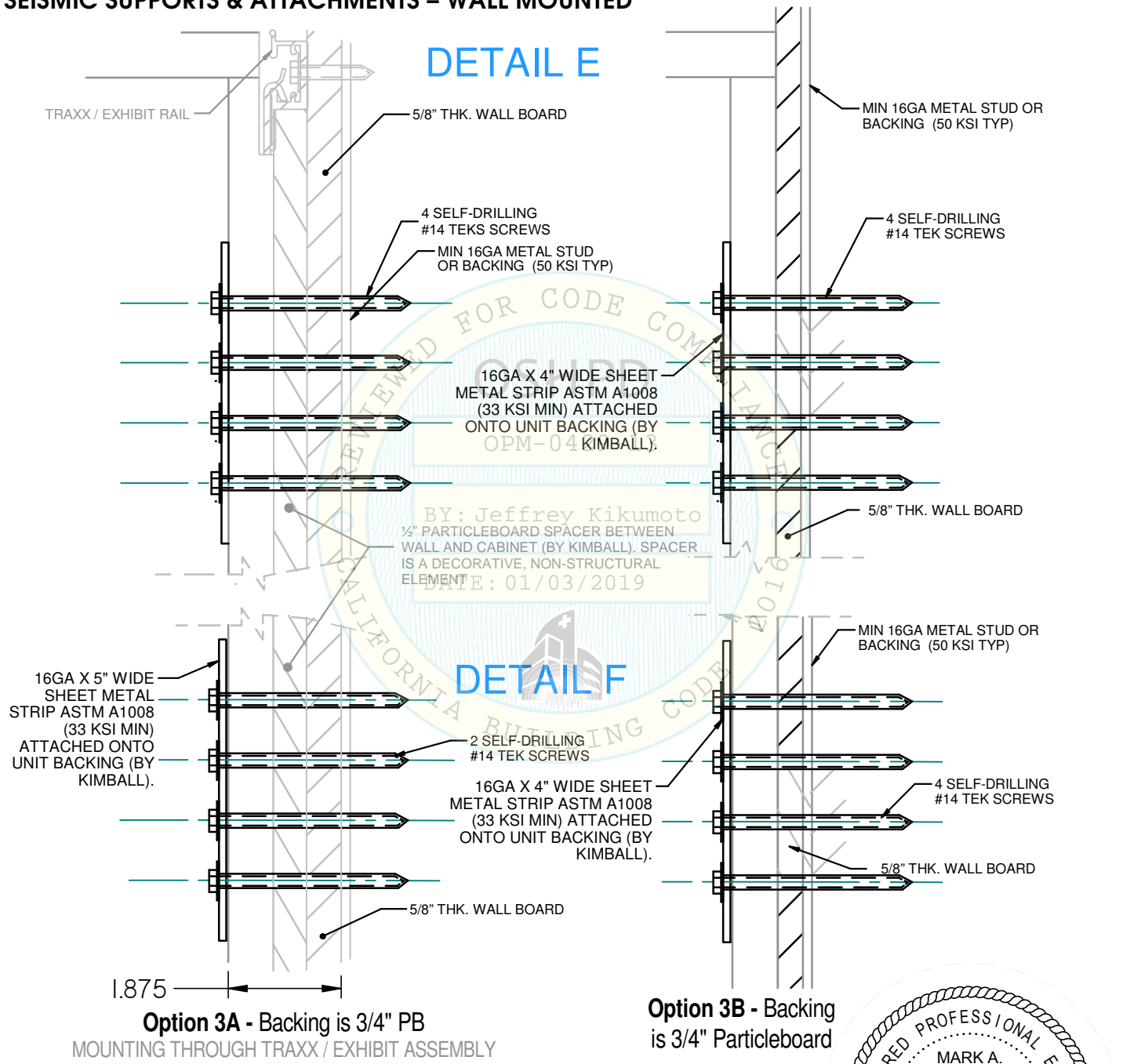
Date: May. 19, 2017

7
of 8

Equipment Type:

WALL MOUNT OVERHEAD STORAGE, SHELVES & HUTCHES

SEISMIC SUPPORTS & ATTACHMENTS – WALL MOUNTED



	#10	#12	#14
A	Max 0.312"	0.312"	0.375"
	Min 0.305"	0.305"	0.367"
W	Max 0.340"	0.340"	0.409"
	Min 0.120"	0.155"	0.190"
H	Max 0.105"	0.139"	0.172"
	Max 0.414"	0.432"	0.520"
F	Min 0.384"	0.398"	0.480"
	Max 0.031"	0.039"	0.050"
U	Min 0.019"	0.022"	0.030"

TEK SCREW ITW Buildex (ICC ESR-1976)

TRAXX/EXHIBIT ASSEMBLY IS NOT CONSIDERED A STRUCTURAL ELEMENT, NOR IS IT AN INTEGRAL COMPONENT TO THE CABINET ATTACHMENTS.

Washer size and thickness typical



Equipment Manufacturer:



Kimball International, Inc. on behalf of Kimball Office and National Office Furniture

OPM-0429-13

ZFA STRUCTURAL ENGINEERS

Job No. 34028

Sheet

601 Montgomery St. Suite 1450 | San Francisco CA, 94111 | ph. 415 243 4091 | zfa.com

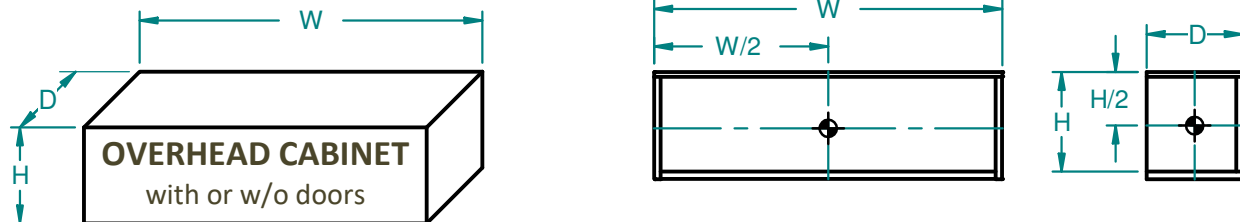
Date: May. 19, 2017

8
of 8

Equipment Type:

WALL MOUNT OVERHEAD STORAGE, SHELVES & HUTCHES

MODEL NUMBERS



TOTAL LOAD INCLUDES ALL UNIT COMPONENTS (DOORS, DRAWERS, ETC.)

Series	Mounting Type	Body	"D" Deep	"W" Width	"H" Height	Back Panel
FOOTPRINT	Op 1	Metal	12, 13, 14, 16	24, 30, 36, 42, 48, 51, 54, 57, 60, 63, 66, 72	6, 9, 14, 15, 17	12 GA
WAVEWORKS	Op 1	Metal	16	30, 36, 42, 48	17	12 GA
WAVEWORKS	Op 2 or 3	Wood	16	30, 36, 42, 48	18, (30)	3/4
DEFINITION	Op 2 or 3	Wood	16	30, 36, 42, 48, 54, 60, 66, 72	18, (20, 30)	3/4
EPIC	Op 2 or 3	Wood	14, 15	30, 36, 42, 48, 54, 60, 66, 72	13, 18	3/4
FOOTPRINT	Op 2 or 3	Wood	14, 15, 16, 17	24, 30, 36, 42, 48, 60, 72	14, 15, 17, (19)	3/4
PRIORITY	Op 2 or 3	Wood	14, 15, 16	30, 36, 42, 48, 54, 60, 72	10, 16, (19, 25, 31, 33)	3/4
ALTERNA	Op 3	Wood	14, 19	30, 36, 42, 48, 54, 60, 72	(24, 36)	3/4

NOTES:

1. OPTION 2 APPLIES TO WOOD BODIED UNITS WITH HEIGHTS 18.5" OR LESS. OPTION 3 APPLIES TO WOOD BODIED UNITS WITH HEIGHTS IN EXCESS OF 18.5"

2. THE SELF WEIGHT OF SHELVING IS INCLUDED FOR WOOD BODIED UNITS WITH HEIGHTS IN EXCESS OF 18.5". FOR ALL OTHER CONDITIONS, INTERMEDIATE SHELVING IS NOT PERMITTED

KIMBALL INTERNATIONAL OVERHEAD PRODUCT PORTFOLIO INCLUDES THOUSANDS OF MODEL NUMBERS WITH THOUSANDS OF POTENTIAL CONFIGURATIONS (E.G. DOOR STYLES, DIMENSIONS, FINISHES, LOCKS, PULLS).

TO ELIMINATE LISTING THOSE THOUSANDS OF MODEL NUMBERS THE FOLLOWING GUIDELINES WILL BE USED.

- ALL MODEL NUMBERS WITHIN THE KIMBALL INTERNATIONAL OVERHEAD PRODUCT PORTFOLIO MEETING THE CRITERIA IN THE SCHEDULE ABOVE, ARE INCLUDED IN THIS OPM. ALL UNITS MUST MEET THE MATERIAL SPECS SPECIFIED IN THE MOUNTING TYPE OPTION
- OVERHEAD CABINETS DIMENSIONS MODIFIED TO ACCOMMODATE BUILDING FEATURES (E.G. COLUMNS, WALLS), ARE ALLOWED IF THE FINAL DIMENSION FALL BETWEEN THE MINIMUM AND MAXIMUM DIMENSIONS IN THE SCHEDULE ABOVE.

