



OFFICE OF STATEWIDE HEALTH PLANNING AND DEVELOPMENT
FACILITIES DEVELOPMENT DIVISION

APPLICATION FOR OSHPD PREAPPROVAL
OF MANUFACTURER'S CERTIFICATION (OPM)

OFFICE USE ONLY

APPLICATION #: OPM-0434-13

OSHPD Preapproval of Manufacturer's Certification (OPM)

Type: [X] New [ ] Renewal [ ] Update to Pre-CBC 2013 OPA Number:

Manufacturer Information

Manufacturer: Kimball International on behalf of Kimball Office and National Office Furniture

Manufacturer's Technical Representative: Ricardo Espinosa

Mailing Address: 1600 Royal St., Jasper, IN 47549-1001

Telephone: 812-482-8308 Email: ricardo.espinosa@kimball.com

Product Information

Product Name: KO Storage Cabinets, NOF Storage Cabinets, Files, Pedestals, Credenzas, Vertical Storage

Product Type: Wood Construction and Sheet Metal Construction. Floor standing, Wall Mounted (Anchoring to the Wall) Storage Cabinets

Product Model Number: Configurations for 30" max deep by 80" max high by 24" through 42" max long;

Backing is steel plate 16GA on 3/4" veneer Particleboard.

Model Numbers KO FOOTPRINT, KO PRIORITY, KO EXTRA, KO DEFINITION, KO FUNDAMANTAL, KO LF, KO STOW, NOF EPIC, NOF WAVEWORKS, NOF FILES, NOF EXTRA

General Description: Storage Cabinets, Files, Pedestals, Credenzas, Vertical Storage

Applicant Information

Applicant Company Name: Kimball International on behalf of Kimball Office and National Office Furniture

Contact Person: Ricardo Espinosa

Mailing Address: 1600 Royal St., Jasper, IN 47549-1001

Telephone: 812-482-8308 Email: ricardo.espinosa@kimball.com

I hereby agree to reimburse the Office of Statewide Health Planning and Development review fees in accordance with the California Administrative Code, 2016.

Signature of Applicant: Ricardo Espinosa Date: 07/11/2017

Title: R&D Engineering Manager Company Name: Kimball International, Inc.

"Access to Safe, Quality Healthcare Environments that Meet California's Diverse and Dynamic Needs"





OFFICE OF STATEWIDE HEALTH PLANNING AND DEVELOPMENT
FACILITIES DEVELOPMENT DIVISION

Registered Design Professional Preparing Engineering Recommendations

Company Name: ZFA STRUCTURAL ENGINEERS
Name: Mark Moore, SE California License Number: S4443
Mailing Address: 601 Montgomery Street Suite 1450, San Francisco, CA 94111
Telephone: (415)243-4091 x 201 Email: markm@zfa.com; ryanb@zfa.com; mickeyk@zfa.com

OSHPD Special Seismic Certification Preapproval (OSP)

- Special Seismic Certification is preapproved under OSP- (Separate application for OSP is required)
Special Seismic Certification is not preapproved

Certification Method(s)

- Testing in accordance with: ICC-ES AC156 FM 1950-16
Other\* (Please Specify):

\*Use of criteria other than those adopted by the California Building Standards Code, 2016 (CBSC 2016) for component supports and attachments are not permitted. For distribution system, interior partition wall, and suspended ceiling seismic bracings, test criteria other than those adopted in the CBSC 2016 may be used when approved by OSHPD prior to testing.

- Analysis
Experience Data
Combination of Testing, Analysis, and/or Experience Data (Please Specify):

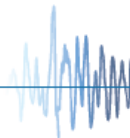
List of Attachments Supporting the Manufacturer's Certification

- Test Report Drawings Calculations Manufacturer's Catalog
Other(s) (Please Specify):

OFFICE USE ONLY - OSHPD APPROVAL VALID FOR CBC 2016 & ALL PRE-2016 CODE BASED PROJECTS

Signature: Sonia Eliseo Date: 1/22/2020
Print Name: Sonia Eliseo
Title: Structural Engineer
Condition of Approval (if applicable):

"Access to Safe, Quality Healthcare Environments that Meet California's Diverse and Dynamic Needs"



SEE SHEET 7 FOR CABINET MODELS INCLUDED IN THIS OPM

## TABLE OF CONTENTS

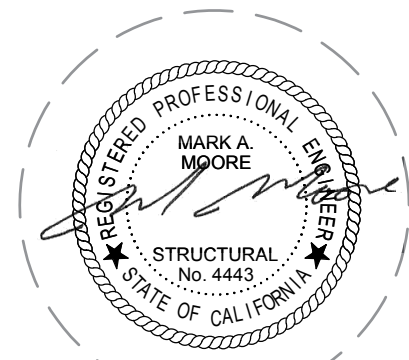
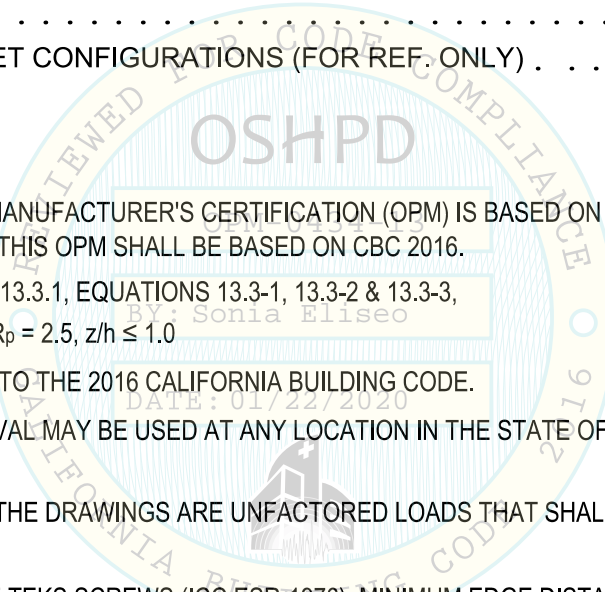
GENERAL NOTES . . . . .	1
TYPE 1 FLOOR STANDING - WALL MOUNTED CABINET DETAILS . . . . .	2
TYPE 2 FLOOR STANDING - WALL MOUNTED CABINET DETAILS . . . . .	3
SEISMIC ATTACHMENT AND DEMAND FORCE SCHEDULE . . . . .	4, 5, 6
MODEL NUMBERS . . . . .	7
APPENDIX - TYPICAL CABINET CONFIGURATIONS (FOR REF. ONLY) . . . . .	8

## GENERAL NOTES

1. THIS OSHPD PRE-APPROVAL OF MANUFACTURER'S CERTIFICATION (OPM) IS BASED ON THE CBC 2016. THE DEMAND (DESIGN FORCES) FOR USE WITH THIS OPM SHALL BE BASED ON CBC 2016.
2. FORCES PER ASCE 7-10 SECTION 13.3.1, EQUATIONS 13.3-1, 13.3-2 & 13.3-3, WHERE  $S_{Ds} = 2.0$ ,  $a_p = 1.0$ ,  $I_p = 1.5$ ,  $R_p = 2.5$ ,  $z/h \leq 1.0$
3. THIS PRE-APPROVAL CONFORMS TO THE 2016 CALIFORNIA BUILDING CODE.
4. THE DETAILS IN THIS PRE-APPROVAL MAY BE USED AT ANY LOCATION IN THE STATE OF CALIFORNIA, WHERE  $S_{Ds}$  IS NOT GREATER THAN 2.0.
5. ALL ANCHOR FORCES SHOWN IN THE DRAWINGS ARE UNFACTORED LOADS THAT SHALL BE USED FOR ALLOWABLE STRENGTH DESIGN.
6. SHEET METAL SCREWS SHALL BE TEKS SCREWS (ICC ESR-1976). MINIMUM EDGE DISTANCE AND SPACING PER ICC REPORT.
7. THIS PRE-APPROVAL COVERS ONLY THE SUPPORTS & ATTACHMENTS OF THE UNIT TO THE STRUCTURE.

### RESPONSIBILITIES OF THE STRUCTURAL ENGINEER OF RECORD (SEOR) OF THE BUILDING:

8. DESIGN BACKING BARS, WALL STUDS, ETC. WHICH THE UNITS ARE ATTACHED TO AS NOTED IN THE DRAWINGS.
9. THE SEOR SHALL ALSO VERIFY THE ADEQUACY OF THE STRUCTURES (SUCH AS WALLS AND FLOORS) WHICH SUPPORT THE UNITS FOR THE LOADS IMPOSED ON THEM BY THE UNITS AS WELL AS ALL OTHER LOADS.
10. PROVIDE SUPPORTING STRUCTURE REQUIRED TO SUPPORT WEIGHTS AND FORCES SHOWN, IN ADDITION TO ALL OTHER LOADS.
11. VERIFY THAT THE INSTALLATION IS IN CONFORMANCE WITH THE 2016 CBC AND WITH THE DETAILS SHOWN IN THIS PRE-APPROVAL. VERIFY THAT THE ACTUAL EQUIPMENT WEIGHT, CG LOCATION, ANCHOR LOCATIONS, ANCHOR DETAILS AND THE MATERIAL AND GAGE OF THE UNIT WHERE ATTACHMENTS ARE MADE AGREE WITH THE INFORMATION SHOWN IN THE PRE-APPROVAL DOCUMENTS.
12. VERIFY THAT THE COMBINATION OF  $S_{Ds}$  &  $z/h$  RESULT IN SEISMIC FORCES ( $E_h$ ,  $E_v$ ) THAT ARE NOT GREATER THAN THE VALUES ON THE DETAILS.



Equipment Manufacturer:



Kimball International, Inc. on behalf of Kimball Office and National Office Furniture

OPM-0434-13

**ZFA STRUCTURAL ENGINEERS**

601 Montgomery St. Suite 1450 | San Francisco CA, 94111 | ph. 415 243 4091 | zfa.com

Job No. 34028

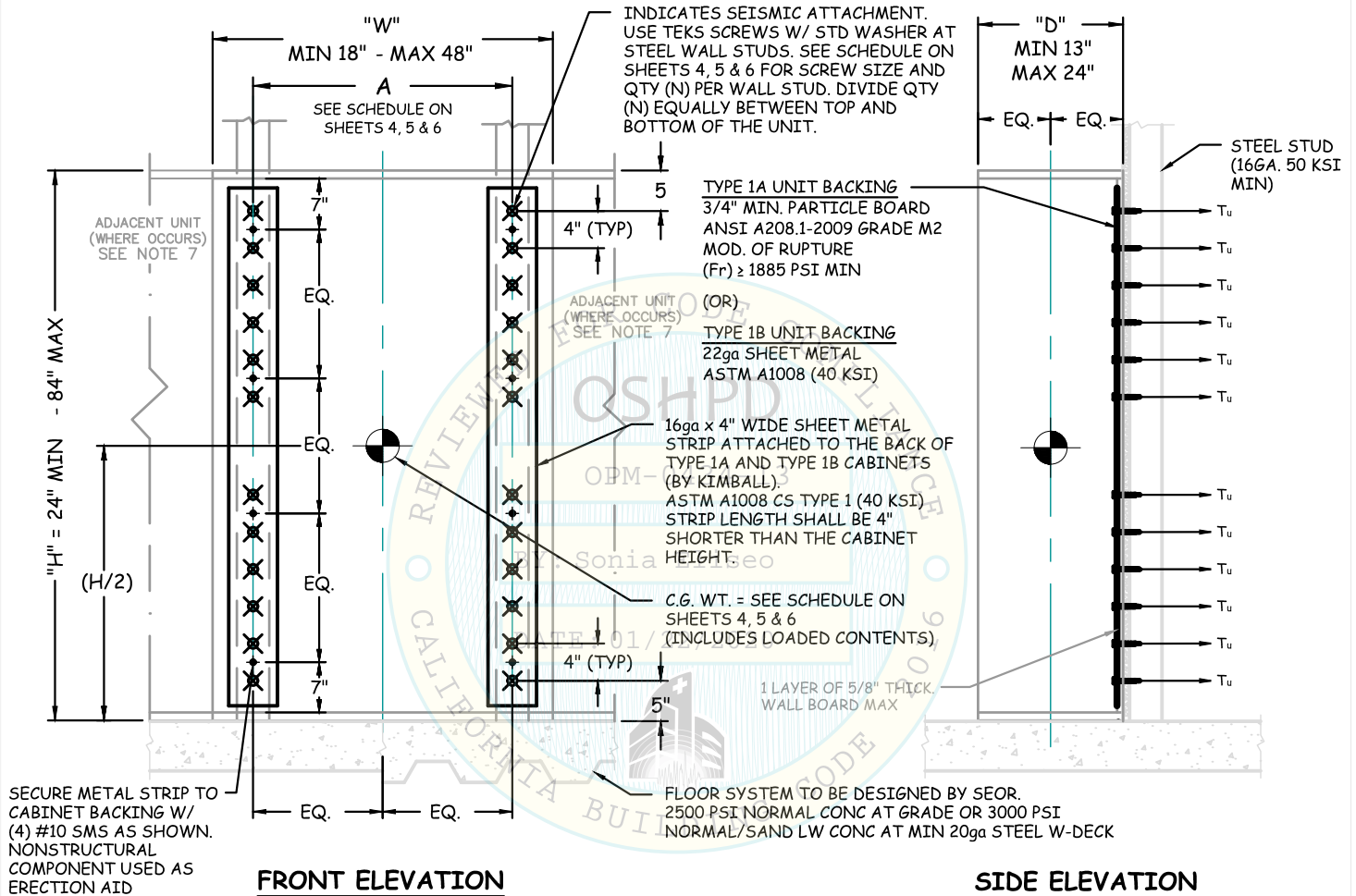
Date: Jul. 11, 2017

Sheet

**2**  
of 8

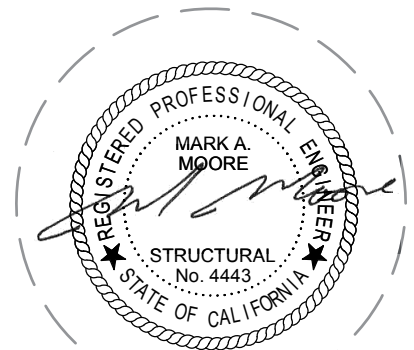
Equipment Type: **KIMBALL & NATIONAL METAL & WOOD FLOOR STANDING - WALL MOUNTED CABINETS - 18-72" Wide, 13-24" Deep, 84" Max Height**

**TYPE 1 FLOOR STANDING - WALL MOUNTED CABINET: SEISMIC SUPPORTS & ATTACHMENTS**



**NOTES:**

- CABINET BACK PANEL IS 3/4" PARTICLEBOARD FOR TYPE 1A CABINETS AND 22ga SHEET METAL FOR TYPE 1B CABINETS. THIS PRE-APPROVAL INCLUDES BOTH TYPES OF BACK PANELS. SEE SHEETS 4, 5 AND 6 FOR SEISMIC ATTACHMENT AND DEMAND FORCE SCHEDULE.
- FORCES ARE DETERMINED PER CBC 2016 AND ASCE 7-10. ALLOWABLE STRESS DESIGN IS USED.
- HORIZONTAL FORCE (Eh) = 1.01 Wp      VERTICAL FORCE (Ev) = 0.28 Wp      (S<sub>DS</sub> = 2.00; a<sub>p</sub> = 1.0; I<sub>p</sub> = 1.5; R<sub>p</sub> = 2.5; z/h ≤ 1.0)
- STRUCTURAL ENGINEER OF RECORD SHALL PROVIDE STRUCTURE TO SUPPORT WEIGHTS AND FORCES SHOWN.
- OUTLINES SHOWN IN THE ATTACHMENT DETAILS ARE GENERIC. THE UNIT CONFIGURATIONS VARY ACCORDING TO ITS FUNCTION AND MAY INCLUDE DRAWERS, SHELVES, AND DIVIDERS IN ANY COMBINATION. CENTER OF GRAVITY WEIGHT IS A MAXIMUM. THIS PRE-APPROVAL ENCOMPASSES ALL WEIGHTS UP TO THE MAXIMUM WEIGHT SHOWN.
- MAXIMUM WEIGHTS LISTED INCLUDE CABINET WEIGHT AND ITS CONTENTS. WEIGHTS SHOWN ARE WORST CASE SCENARIO (I.E. GLASS DOORS OR OTHER HEAVY OPTIONS).
- CABINETS MAY BE INSTALLED ADJACENT TO EACH OTHER. EACH CABINET SHALL HAVE ITS OWN ANCHORING SYSTEM. ADJACENT UNITS MUST BE CENTERED BETWEEN WALL STUDS (SEE THE DIAGRAM ON SHEET 4, 5 AND 6). IF THE LAYOUT REQUIRES PLACING UNITS IN LOCATIONS WHERE IT DOES NOT ENGAGE THE MINIMUM NUMBER OF WALL STUDS SPECIFIED ON SHEETS 4, 5 AND 6, A BACKING PLATE SHALL BE DESIGNED BY THE STRUCTURAL ENGINEER OF RECORD.
- EQUIP. MANUFACTURER MUST DESIGN UNIT TO MAKE C.G. ≤ THE C.G. HEIGHT DIMENSION SHOWN ON "FRONT" ELEVATION.
- SEE GENERAL NOTES FOR ADDITIONAL INFORMATION.



**ZFA STRUCTURAL ENGINEERS**

601 Montgomery St. Suite 1450 | San Francisco CA, 94111 | ph. 415 243 4091 | zfa.com

Job No. 34028

Date: Jul. 11, 2017

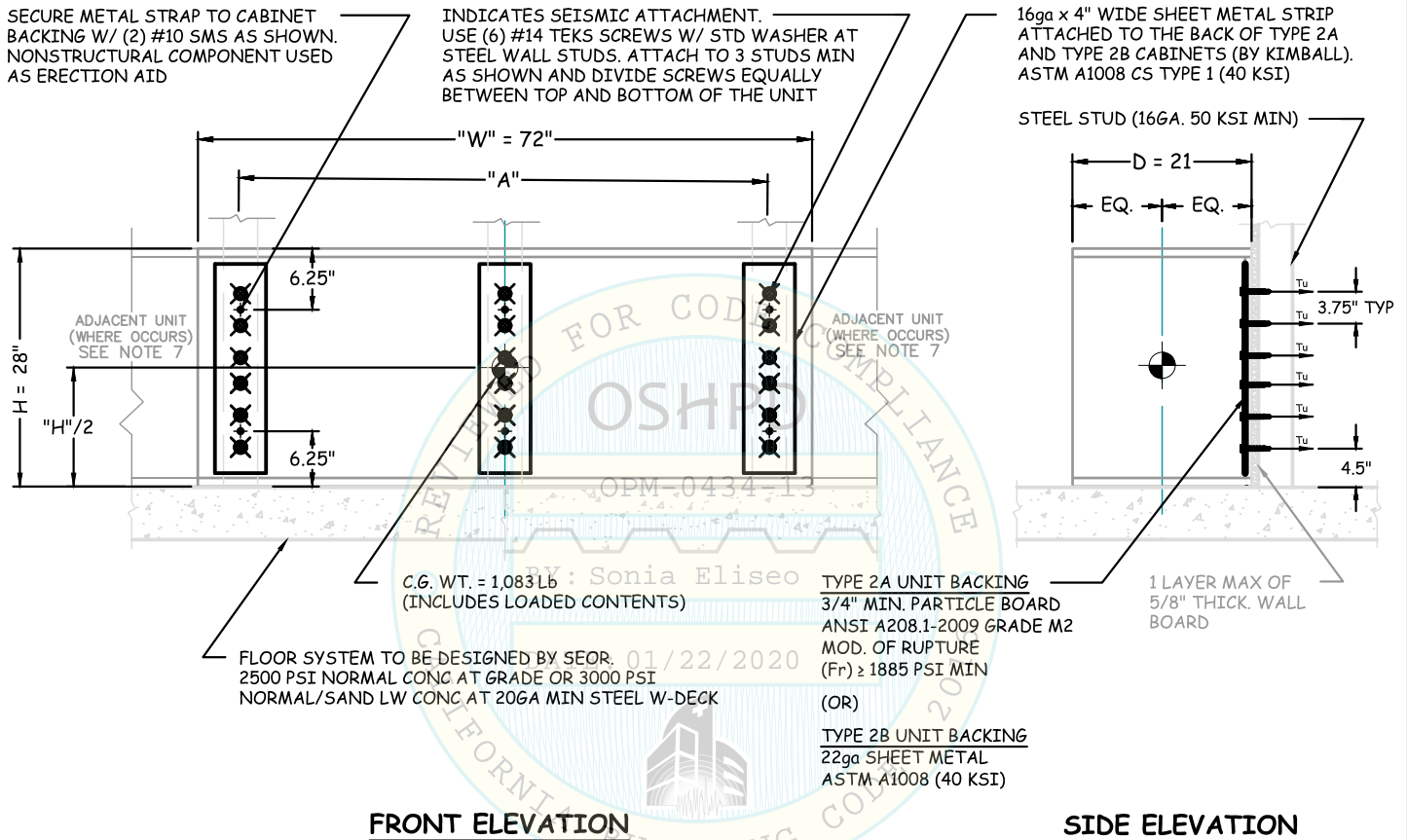
Sheet

**3**

of 8

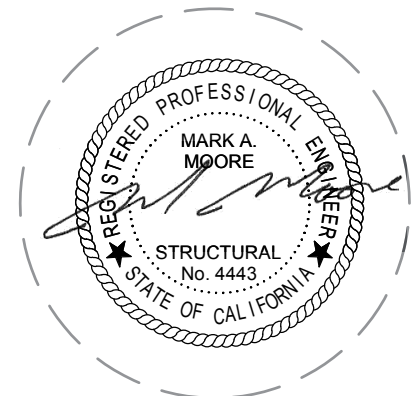
Equipment Type: **KIMBALL & NATIONAL METAL & WOOD FLOOR STANDING -  
WALL MOUNTED CABINETS - 18-72" Wide, 13-24" Deep, 84" Max Height**

**TYPE 2 FLOOR STANDING - WALL MOUNTED CABINET: SEISMIC SUPPORTS & ATTACHMENTS**



**NOTES:**

- CABINET BACK PANEL IS 3/4" PARTICLEBOARD FOR TYPE 2A CABINETS AND 22ga SHEET METAL FOR TYPE 2B CABINETS. THIS PRE-APPROVAL INCLUDES BOTH TYPES OF BACK PANELS. SEE SHEETS 4, 5 AND 6 FOR SEISMIC ATTACHMENT AND DEMAND FORCE SCHEDULE.
- FORCES ARE DETERMINED PER CBC 2016 AND ASCE 7-10. ALLOWABLE STRESS DESIGN IS USED.
- HORIZONTAL FORCE (Eh) = 1.01 Wp      VERTICAL FORCE (Ev) = 0.28 Wp      (Sds = 2.00; ap = 1.0; Ip = 1.5; Rp = 2.5; z/h ≤ 1.0)
- STRUCTURAL ENGINEER OF RECORD SHALL PROVIDE STRUCTURE TO SUPPORT WEIGHTS AND FORCES SHOWN.
- OUTLINES SHOWN IN THE ATTACHMENT DETAILS ARE GENERIC. THE UNIT CONFIGURATIONS VARY ACCORDING TO ITS FUNCTION AND MAY INCLUDE DRAWERS, SHELVES, AND DIVIDERS IN ANY COMBINATION. CENTER OF GRAVITY WEIGHT IS A MAXIMUM. THIS PRE-APPROVAL ENCOMPASSES ALL WEIGHTS UP TO THE MAXIMUM WEIGHT SHOWN.
- MAXIMUM WEIGHTS LISTED INCLUDE CABINET WEIGHT AND ITS CONTENTS. WEIGHTS SHOWN ARE WORST CASE SCENARIO (I.E. GLASS DOORS OR OTHER HEAVY OPTIONS).
- CABINETS MAY BE INSTALLED ADJACENT TO EACH OTHER. EACH CABINET SHALL HAVE ITS OWN ANCHORING SYSTEM. ADJACENT UNITS MUST BE CENTERED BETWEEN WALL STUDS (SEE THE DIAGRAM ON SHEET 4, 5 AND 6). IF THE LAYOUT REQUIRES PLACING UNITS IN LOCATIONS WHERE IT DOES NOT ENGAGE THE MINIMUM NUMBER OF WALL STUDS SPECIFIED ON SHEETS 4, 5 AND 6, A BACKING PLATE SHALL BE DESIGNED BY THE STRUCTURAL ENGINEER OF RECORD.
- EQUIP. MANUFACTURER MUST DESIGN UNIT TO MAKE C.G. ≤ THE C.G. HEIGHT DIMENSION SHOWN ON "FRONT" ELEVATION.
- SEE GENERAL NOTES FOR ADDITIONAL INFORMATION.



# SEISMIC ATTACHMENT AND DEMAND FORCE SCHEDULE



Kimball International, Inc. on behalf of Kimball Office and National Office Furniture

OPM-0434-13

FOR USE WITH TYPE 1 AND TYPE 2 FLOOR STANDING - WALL MOUNTED CABINETS

## ZFA STRUCTURAL ENGINEERS

601 Montgomery St. Suite 1450 | San Francisco CA, 94111 | ph. 415 243 4091 | zfa.com

Job No. 34028

Sheet 4

Date: Jul. 11, 2017

4 of 8

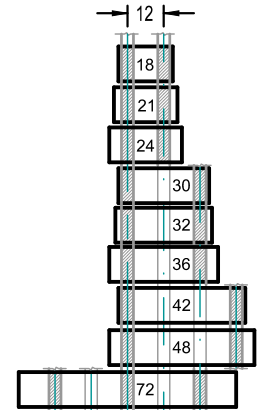
SCHEDULE SHOWS WORST CASE SCENARIO FOR LOADED CABINET. SEE SHEET 7 FOR CABINET MODELS INCLUDED IN THIS OPM

Equipment Type: KIMBALL & NATIONAL METAL & WOOD FLOOR STANDING - WALL MOUNTED CABINETS - 18-72" Wide, 13-24" Deep, 84" Max Height

### WALL STUD SPACED (OC) - 12 INCHES - ALL UNITS SHALL ENGAGE 2 STUDS MIN (72" WIDE UNIT SHALL ENGAGE 3 STUDS)

A	D	W	H - Height 24 (in)					H - Height 28 (in)					H - Height 38 (in)					H - Height 40 (in)					H - Height 42 (in)					H - Height 51 (in)					H - Height 54 (in)																					
			in	in	in	WU	WL	WT	N	Ta	Va	TEK	WU	WL	WT	N	Ta	Va	TEK	WU	WL	WT	N	Ta	Va	TEK	WU	WL	WT	N	Ta	Va	TEK	WU	WL	WT	N	Ta	Va	TEK	WU	WL	WT	N	Ta	Va	TEK							
13	30	69	163	232	4	35	29	#12	74	242	316	4	48	40	#12	104	339	443	4	67	56	#12	109	360	470	4	71	59	#12	115	382	496	4	75	63	#12	157	468	625	6	63	52	#12	148	500	648	6	65	54	#12				
12	16	18	51	118	169	4	40	21	#12	46	144	190	4	45	24	#12	64	201	265	4	62	33	#12	67	214	281	4	66	55	#12	71	227	297	4	70	37	#12	97	278	375	4	88	47	#12	91	297	388	4	91	49	#12			
24	16	30	85	208	293	4	46	37	#12	76	253	329	4	51	41	#12	83	354	437	4	68	55	#12	87	377	464	4	72	58	#12	92	399	491	4	76	62	#12	161	489	650	6	67	55	#12	152	523	675	6	70	57	#12			
24	16	32	91	223	314	4	49	40	#12	81	271	352	4	55	44	#12	89	380	469	4	73	59	#12	94	404	498	4	77	63	#12	98	428	526	4	82	66	#12	172	525	697	6	72	59	#12	162	561	723	6	75	61	#12			
24	16	36	102	253	355	4	55	45	#12	91	308	399	4	62	50	#12	100	431	531	6	55	45	#12	105	458	564	6	58	47	#12	111	486	596	6	62	50	#12	193	595	788	6	82	66	#12	182	636	818	6	85	69	#12			
12	18	24	77	186	263	4	67	33	#12	68	227	295	4	75	37	#12	75	317	392	4	100	49	#12	79	337	416	4	106	52	#12	83	358	441	4	113	56	#14	145	438	583	6	99	49	#12	137	468	605	6	103	51	#12			
24	18	30	96	238	334	4	53	42	#12	103	289	392	4	62	49	#12	93	405	498	4	79	63	#12	98	431	528	6	56	44	#12	103	456	559	6	59	47	#12	181	559	740	6	78	62	#12	171	598	769	6	81	65	#12			
24	18	36	115	289	404	4	64	51	#12	123	352	475	4	75	60	#12	112	492	604	6	64	51	#12	118	524	642	6	68	54	#12	124	555	679	6	72	57	#12	199	680	879	6	93	74	#14	205	727	932	6	99	78	#14			
36	18	42	134	341	475	4	70	60	#12	144	414	558	4	83	70	#12	131	580	711	6	70	60	#12	138	617	755	6	74	63	#12	145	654	798	6	79	67	#12	232	801	1,033	6	102	87	#14	239	856	1,095	8	81	69	#14			
12	24	18	77	186	263	4	84	33	#12	100	226	326	4	104	41	#12	110	316	426	4	136	54	#14	116	336	452	4	144	57	#14	122	358	478	6	101	40	#12	133	436	569	6	121	48	#14	141	466	607	6	129	51	#14			
12	24	24	102	256	358	4	114	45	#12	134	312	446	4	142	56	#14	146	436	582	6	124	49	#14	154	464	618	6	131	52	#14	161	492	653	6	139	55	#14	193	603	796	8	127	50	#14	204	644	848	8	135	53	#14			
24	24	30	128	327	455	4	81	57	#12	167	398	565	5	81	57	#12	183	537	740	6	88	62	#14	194	592	785	6	93	66	#14	202	627	830	6	99	70	#14	221	769	990	8	88	62	#14	234	822	1,056	8	94	67	#14			
24	24	36	153	398	551	4	98	69	#14	200	484	684	5	97	69	#14	219	677	896	6	106	75	#14	231	720	951	6	113	80	#14	242	763	1,005	8	90	63	#14	265	935	1,200	8	107	76	#14	281	1,000	1,281	10	108	65	#14			
36	24	42	179	468	647	4	100	82	#14	203	570	773	5	95	78	#14	225	797	1,022	6	105	86	#14	269	848	1,118	8	86	70	#14	283	899	1,182	8	91	74	#14	309	1,101	1,410	10	87	71	#14	327	1,177	1,504	10	93	76	#14			
36	21	48								192	566	758	5	92	76	#14																																						
48	21	72								220	863	1,083	6	102	91	#14																																						

CABINET POSITION IN RELATION TO WALL STUDS



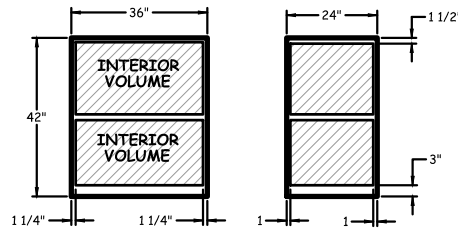
HATCH INDICATES WALL STUDS TO RECEIVE FASTENERS. SEE NOTE 7 ON SHEETS 2 AND 3

WL = MAX WEIGHT OF CONTENTS  
WU = UNIT SELF WEIGHT  
WT = TOTAL MAX WEIGHT LOADED  
N = TEKS SCREW QUANTITY PER STUD  
(DIVIDE QTY EQUALLY BETWEEN TOP AND BOTTOM OF UNIT)

Ta = REQUIRED SCREW STRENGTH IN TENSION (Lb/SCREW)  
Va = REQUIRED SCREW STRENGTH IN SHEAR (Lb/SCREW)

**SAMPLE UNIT MAX WEIGHT CALCULATION:** (SEE FIGURE 1)

DEPTH 24" x WIDTH 36" x HEIGHT 42"  
15.7 CUBIC FT USABLE SPACE (INTERIOR VOLUME) x 50 Lb/CU. FT.\* = 785 Lb  
UNIT WEIGHT \*\* = 242 Lb  
Σ 785 Lb + 242 Lb = 1,027 Lb



TEKS screw in 16ga, 50 KSI min stud		
	#12	#14
TALL	205	261
VALL	130	166
VADJUSTED	118	150

FIGURE 2: TEKS SCREW CAPACITY VALUES



\* per 2016 CBC, Table 1607A.1, footnote n  
\*\* Unit weight includes all applicable items mentioned in note 5, in sheets 2 and 3.



SEISMIC ATTACHMENT AND DEMAND FORCE SCHEDULE

FOR USE WITH TYPE 1 AND TYPE 2 FLOOR STANDING - WALL MOUNTED CABINETS

SCHEDULE SHOWS WORST CASE SCENARIO FOR LOADED CABINET. SEE SHEET 7 FOR CABINET MODELS INCLUDED IN THIS OPM



Kimball International, Inc. on behalf of Kimball Office and National Office Furniture

OPM-0434-13

ZFA STRUCTURAL ENGINEERS

601 Montgomery St. Suite 1450 | San Francisco CA, 94111 | ph. 415 243 4091 | zfa.com

Job No. 34028

Date: Jul. 11, 2017

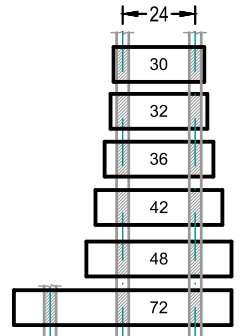
Sheet 6 of 8

Equipment Type: KIMBALL & NATIONAL METAL & WOOD FLOOR STANDING - WALL MOUNTED CABINETS - 18-72" Wide, 13-24" Deep, 84" Max Height

WALL STUD SPACED (OC) - 24 INCHES - ALL UNITS SHALL ENGAGE 2 STUDS MIN (72" WIDE UNIT SHALL ENGAGE 3 STUDS)

Large table with multiple columns for cabinet dimensions (A, D, W) and wall heights (24, 28, 38, 40, 42, 51, 54, 60, 64, 66, 68, 72, 78, 84 inches). Each row contains numerical values for various parameters like weight and screw quantities.

CABINET POSITION IN RELATION TO WALL STUDS



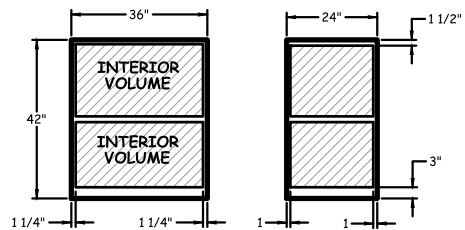
HATCH INDICATES WALL STUDS TO RECEIVE FASTENERS. SEE NOTE 7 ON SHEETS 2 AND 3

- WL = MAX WEIGHT OF CONTENTS
WU = UNIT SELF WEIGHT
WT = TOTAL MAX WEIGHT LOADED
N = TEKS SCREW QUANTITY PER STUD (DIVIDE QTY EQUALLY BETWEEN TOP AND BOTTOM OF UNIT)
Ta = REQUIRED SCREW STRENGTH IN TENSION (Lb/SCREW)
Va = REQUIRED SCREW STRENGTH IN SHEAR (Lb/SCREW)

Table with 4 columns: TEKS screw in 16ga, 50 KSI min stud, #12, #14, and LB/Screw. Rows include TALL, VALL, and VADJUSTED values.

FIGURE 2: TEKS SCREW CAPACITY VALUES

SAMPLE UNIT MAX WEIGHT CALCULATION: (SEE FIGURE 1)
DEPTH 24" x WIDTH 36" x HEIGHT 42"
15.7 CUBIC FT USABLE SPACE (INTERIOR VOLUME) x 50 Lb/CU. FT.\* = 785 Lb
UNIT WEIGHT \*\* = 242 Lb
Σ 785 Lb + 242 Lb = 1,027 Lb



OPM-0434-13: Reviewed for Code Compliance by Sonia Eliseo

\* per 2016 CBC, Table 1607A.1, footnote n
\*\* Unit weight includes all applicable items mentioned in note 5, in sheets 2 and 3.
01/22/2020





Equipment Manufacturer:



Kimball International, Inc. on behalf of Kimball Office and National Office Furniture

OPM-0434-13

**ZFA STRUCTURAL ENGINEERS**

601 Montgomery St. Suite 1450 | San Francisco CA, 94111 | ph. 415 243 4091 | zfa.com

Job No. 34028

Date: Jul. 11, 2017

Sheet

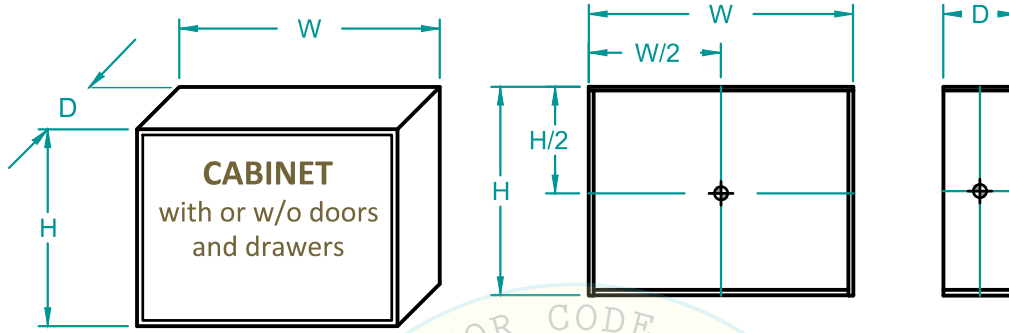
7

of 8

Equipment Type: **KIMBALL & NATIONAL METAL & WOOD FLOOR STANDING - WALL MOUNTED CABINETS - 18-72" Wide, 13-24" Deep, 84" Max Height**

**MODEL NUMBERS**

TOTAL LOAD INCLUDES ALL UNIT COMPONENTS (DOORS, DRAWERS, ETC.)



Series	Mounting Type	Body	"D" Deep	"W" Width	"H" Height	Back Panel
ALTERNA DEFINITION EPIC FOOTPRINT PRIORITY SANCTUARY STOW WAVEWORKS	Type 1A & 2A	Wood	13, 14, 16, 18, 19, 21, 24,	18, 21, 24, 30, 36, 42, 48, 72	24, 28, 38, 40, 42, 51, 54, 60, 64, 66, 68, 72, 78, 84	3/4" particle board
FOOTPRINT FUNDAMENTAL LF SERIES WAVEWORKS	Type 1B & 2B	Metal	13, 14, 16, 18, 19, 21, 24,	18, 21, 24, 30, 36, 42, 48, 72	24, 28, 38, 40, 42, 51, 54, 60, 64, 66, 68, 72, 78, 84	22 ga sheet metal

The Kimball International free standing cabinets product portfolio includes thousands of model numbers with thousands of potential configurations (i.e. door and drawer styles, dimensions, finishes, locks, pulls). To eliminate listing those thousands of model numbers, the following guidelines will be used:

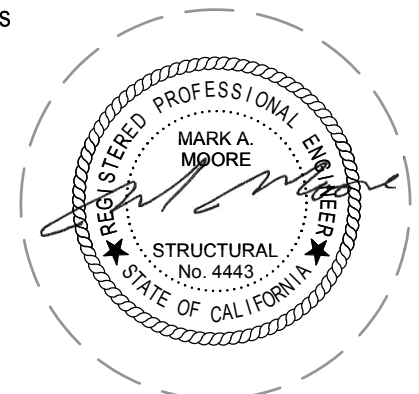
All model numbers within the Kimball International free standing cabinets product portfolio are included in this OPM if the overall unit height, width and depth dimensions are within the values listed in the schedules on sheets 4, 5 and 6.

The cabinet weight, including all accessory options and loaded contents does not exceed the maximum weight listed in the schedules on sheets 4, 5 and 6.

The cabinet backing meets the criteria listed on sheets 2 and 3.

CABINETS MAY BE INSTALLED ADJACENT TO EACH OTHER.

EACH CABINET WILL HAVE ITS OWN SUPPORTS & ATTACHMENTS SYSTEM.



Equipment Manufacturer:



Kimball International, Inc. on behalf of Kimball Office and National Office Furniture

OPM-0434-13

# ZFA STRUCTURAL ENGINEERS

601 Montgomery St. Suite 1450 | San Francisco CA, 94111 | ph. 415 243 4091 | zfa.com

Job No. 34028

Date: Jul. 11, 2017

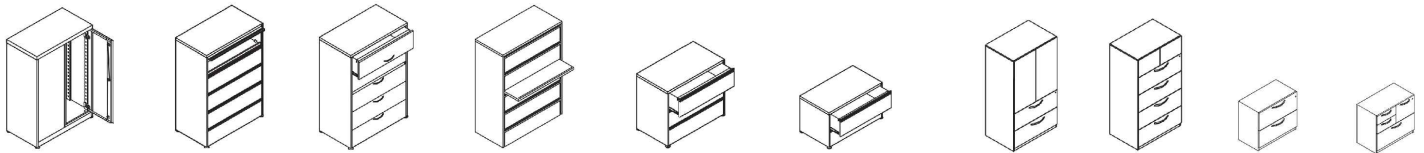
Sheet

8

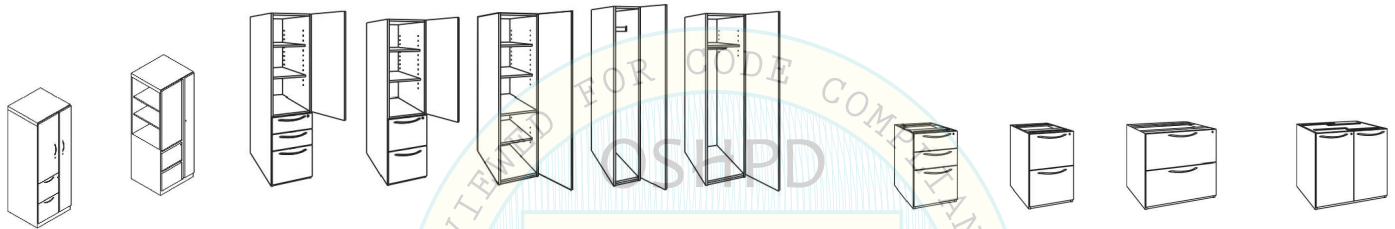
of 8

Equipment Type: KIMBALL & NATIONAL METAL & WOOD FLOOR STANDING - WALL MOUNTED CABINETS - 18-72" Wide, 13-24" Deep, 84" Max Height

## APPENDIX - TYPICAL CABINET CONFIGURATIONS (FOR REFERENCE ONLY)

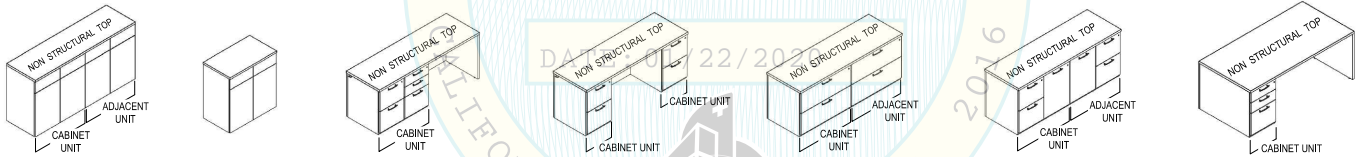


Lateral File Cabinets

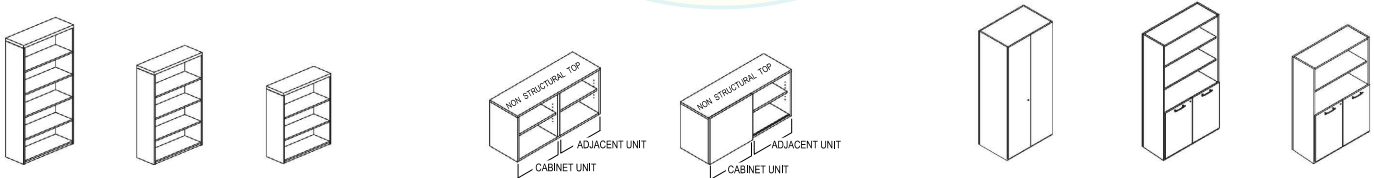


Locker and Wardrobe Cabinets

Pedestal Cabinets



Pedestal Cabinets with worksurfaces



Bookcase Cabinets

The Kimball International free standing cabinets product portfolio includes thousands of model numbers with thousands of potential configurations (i.e. door and drawer styles, dimensions, finishes, locks, pulls). To eliminate listing those thousands of model numbers, the following guidelines will be used:

All model numbers within the Kimball International free standing cabinets product portfolio are included in this OPM if the overall unit height, width and depth dimensions are within the values listed in the schedules on sheets 4, 5 and 6.

The cabinet weight, including all accessory options and loaded contents does not exceed the maximum weight listed in the schedules on sheets 4, 5 and 6.

The cabinet backing meets the criteria listed on sheets 2 and 3.

CABINETS MAY BE INSTALLED ADJACENT TO EACH OTHER.

EACH CABINET WILL HAVE ITS OWN SUPPORTS & ATTACHMENTS SYSTEM.

