



OFFICE OF STATEWIDE HEALTH PLANNING AND DEVELOPMENT
FACILITIES DEVELOPMENT DIVISION

APPLICATION FOR OSHPD PREAPPROVAL OF MANUFACTURER'S CERTIFICATION (OPM)

OFFICE USE ONLY

APPLICATION #: OPM-0438-13

OSHPD Preapproval of Manufacturer's Certification (OPM)

Type: [X] New [ ] Renewal [ ] Update to Pre-CBC 2013 OPA Number:

Manufacturer Information

Manufacturer: Medisafe

Manufacturer's Technical Representative: Neil May

Mailing Address: Twyford Road, Bishop's Stortford, Hertordshire CM23 3LJ, UK

Telephone: +44(0)1279 461641 Email: nmay@medisafeinternational.com

Product Information

Product Name: PCF PRO, PCF S, SISA S (with cabinet)

Product Type: Washer / Sterilizer

Product Model Number: MED 11180, MED 11100 S, MED 11110 S, MED 11120 S, MED 11121UL S, MED 11122 S, MED 11123 S, MED 11130 S, MED 11131 S, MED 11132 S, MED 11133 S, MP 21899, MP 21900, MP 21901, MP 21902, MP 21903

General Description: Medisafe Sonic washer and sterilizer series in various electronic configurations to account for different mains input ranges. Model variants within each product are identical except for label color and switch settings.

Applicant Information

Applicant Company Name: ISAT Seismic Bracing

Contact Person: William V Joerger

Mailing Address: 1020 Crews Road, Suite Q, Matthews NC 28105

Telephone: 510-714-0216 Email: wvjoerger@isatsb.com

I hereby agree to reimburse the Office of Statewide Health Planning and Development review fees in accordance with the California Administrative Code, 2016.

Signature of Applicant: [Signature] Date: 27 July, 2017

Title: Principal Structural Engineer Company Name: ISAT Seismic Bracing

"Access to Safe, Quality Healthcare Environments that Meet California's Diverse and Dynamic Needs"





**OFFICE OF STATEWIDE HEALTH PLANNING AND DEVELOPMENT  
FACILITIES DEVELOPMENT DIVISION**

**Registered Design Professional Preparing Engineering Recommendations**

Company Name: ISAT Seismic Bracing  
Name: William V Joerger California License Number: SE4545  
Mailing Address: 1020 Crews Rd, Matthews NC 28105  
Telephone: 510-714-0216 Email: wvjoerger@isatsb.com

**OSHPD Special Seismic Certification Preapproval (OSP)**

- Special Seismic Certification is preapproved under OSP-  
(Separate application for OSP is required)
- Special Seismic Certification is not preapproved

**Certification Method(s)**

- Testing in accordance with:  ICC-ES AC156  FM 1950-16
- Other\* (Please Specify): Equipment is considered to be rugged. OPM is for anchorage to concrete slabs.

OPM-0438-13

\*Use of criteria other than those adopted by the California Building Standards Code, 2016 (CBSC 2016) for component supports and attachments are not permitted. For distribution system, interior partition wall, and suspended ceiling seismic bracings, test criteria other than those adopted in the CBSC 2016 may be used when approved by OSHPD prior to testing.

- Analysis
- Experience Data
- Combination of Testing, Analysis, and/or Experience Data (Please Specify): \_\_\_\_\_

DATE: 11/07/2017

**List of Attachments Supporting the Manufacturer's Certification**

- Test Report  Drawings  Calculations  Manufacturer's Catalog
- Other(s) (Please Specify): \_\_\_\_\_

**OFFICE USE ONLY – OSHPD APPROVAL VALID FOR CBC 2016 & ALL PRE-2016 CODE BASED PROJECTS**

Signature: *William Staehlin* Date: 11-07-2017  
Print Name: William Staehlin  
Title: SSE  
Condition of Approval (if applicable): \_\_\_\_\_

"Access to Safe, Quality Healthcare Environments that Meet California's Diverse and Dynamic Needs"





# INTERNATIONAL SEISMIC APPLICATION TECHNOLOGY

A Division of Tomarco Contractor Specialties

## Submittal Documents

OPM-0438-13

**OSHPD OPM-0438-13**

BY: William Staehlin

## SUPPORT AND ATTACHMENT CONSTRUCTION DRAWINGS

## WASHERS AND STERILIZERS

## MEDISAFE

ISAT  
1020 Crews Road Suite Q  
Matthews, N.C. 28105  
704-841-4080



*WVJ 26007 17*

FILE NO.: CLT-0617-074

*"Empowered by Experience"*

REV2

OSHPD OPM-0438-13 DWG - i



# OSHPD OPM-0438-13

## MEDISAFE

### DRAWING INDEX

#### INDEX

Cover Page	p i
Index Page	p ii
<u>Drawings for OPM-0438-13</u>	
General Notes	p 1
Attachment Notes	p 2
Medisafe Washers / Sterilizers at Grade	p 3
Medisafe Washers / Sterilizers at Elevated Slab	p 4
Medisafe Washers / Sterilizers Elevations	p 5
Medisafe PCF PRO Washers / Sterilizers Miscellaneous Steel Drawing 1	p 6
Medisafe PCF S and SISA S Washers / Sterilizers Miscellaneous Steel Drawing 2	p 7
Medisafe PCF Pro Brackets	p 8
Medisafe PCF S and SIAS S Brackets	p 9
Medisafe Washers / Sterilizers Equipment Dimensions and Eccentricities	p 10
Medisafe Washers / Sterilizers Anchorage Forces	p 11

OSHPD OPM-0438-13 DWG - ii

## OSHPD OPM-0438-13

MANUFACTURE: MEDISAFE

EQUIPMENT TYPE: WASHERS / STERILIZERS

### GENERAL NOTES:

1. THIS OSHPD PREAPPROVAL OF MANUFACTURER'S CERTIFICATION (OPM) IS BASED ON THE CBC 2016. THE DEMAND (DESIGN FORCES) FOR USE WITH THIS OPM SHALL BE BASED ON THE CBC 2016.
2. SEISMIC CRITERIA USED:  $S_{DS} = 2.5$   $I_p = 1.5$   $a_p = 1.0$   $R_p = 1.5$  (OTHER EQUIPMENT). FOR  $z/h = 0$   $F_{pH} = 1.13$  AND FOR  $z/h \leq 1.0$   $F_{pH} = 3.00$  AND  $F_{pV} = 0.50$ .
3. SUPPORT AND ATTACHMENT FORCES ARE DETERMINED USING ASCE 7-10 CHAPTER 13 "SEISMIC DESIGN REQUIREMENTS FOR NONSTRUCTURAL COMPONENTS". AN OVERSTRENGTH FACTOR  $\Omega_0 = 1.5$  IS USED FOR CONCRETE MATERIALS PER ASCE 7-10 SUPPLEMENT 1 TABLE 13.6-1. LOADS SHOWN ARE STRENGTH DESIGN LOADS PER CBC 2016 SECTION 1605A.2.
4. THIS PREAPPROVAL COVERS ONLY THE SUPPORTS AND ATTACHMENTS OF THE EQUIPMENT TO THE STRUCTURE.
5. STEEL MATERIALS: PLATE 10600 (304-2B-6) STAINLESS STEEL BY MANUFACTURER ( $F_y = 31.2$  KSI), ALL THREAD ROD ASTM F593 CW1 304 STAINLESS STEEL FOR BOLTS AT ELEVATED FLOORS, ANGLE ASTM A36 ( $F_u = 58$  KSI) HOT DIPPED GALVANIZED.
6. CONCRETE SLABS:
  - a. FOR ELEVATED SOLID CONCRETE SLABS: 6" THICKNESS OF NORMAL WEIGHT CONCRETE WITH 3000 PSI MINIMUM STRENGTH.
  - b. METAL DECK: 3" DEEP COMPOSITE STEEL DECK, 20 GAGE MINIMUM, 4 1/2 INCH MINIMUM BOTTOM FLUTE WIDTH AND MINIMUM FLUTE SPACING OF 12", WITH 3 1/4 INCH SAND LIGHT WEIGHT CONCRETE CONCRETE COVER AT 3000 PSI MINIMUM
  - c. FOR SLAB ON GRADE: 6" THICKNESS NORMAL WEIGHT CONCRETE AT 3000 PSI MINIMUM STRENGTH.
7. POST-INSTALLED CONCRETE ANCHORS: HILTI HIT-HY 200 HAS-R (ESR-3187) STAINLESS STEEL 1/2" DIAMETER x 3" EMBEDMENT. DRILL 9/16" DIAMETER x 4 INCH DEEP HOLE; CLEAN HOLE PER MANUFACTURER'S INSTRUCTIONS. FOR ANCHORS INTO THE SOFFIT OF THE METAL DECK USE KWIK BOLT TZ (ESR-1917) 1/2" DIAMETER x 4" MIN. HOLE DEPTH FOR 3 1/4" EFFECTIVE EMBEDMENT WITH 1" MAXIMUM OFFSET FROM THE CENTER OF THE METAL DECK FLUTE. BOTH ARE SUPPLIED BY INSTALLATION CONTRACTOR.
8. EXERCISE DUE CARE WHEN DRILLING POST-INSTALLED ANCHORS TO AVOID DAMAGING CONCRETE REINFORCEMENT OR TENDONS.

OPM-0438-13

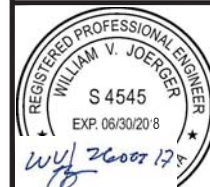
BY: William Staehlin

DATE: 11/07/2017

OPM-0438-13 MEDISAFE WASHERS / STERILIZERS GENERAL NOTES



A Division of Tomarco Contractor Specialties  
International Seismic Application Technology  
1020 Crews Road, Suite Q, Matthews, NC 28105  
704-841-4080 www.isatsb.com



DRAWN BY: WVJ  
DATE: 07/24/17  
REVISED BY: WVJ  
DATE: 10/26/17  
REV NO: 2

SCALE: N.T.S. PAGE: GEN NOTES

OSHPD OPM-0438-13 DWG - 1

**OSHPD OPM-0438-13**

MANUFACTURE: MEDISAFE

EQUIPMENT TYPE: WASHERS / STERILIZERS

**ATTACHMENT NOTES:**

1. THIS OSHPD PREAPPROVAL OF MANUFACTURER'S CERTIFICATION (OPM) IS BASED ON THE CBC 2016. THE DEMAND (DESIGN FORCES) FOR USE WITH THIS OPM SHALL BE BASED ON THE CBC 2016.
2. PERIODIC SPECIAL INSPECTION PER CBC 2016 SECTION 1705A AND TABLE 1705A.3 INCLUDING VERIFICATION OF ANCHOR TYPE, ANCHOR DIMENSIONS, CONCRETE TYPE, CONCRETE COMPRESSIVE STRENGTH, ANCHOR SPACING, EDGE DISTANCES, CONCRETE MEMBER THICKNESS, HOLE DIMENSIONS, ANCHOR EMBEDMENT AND ADHERENCE TO THE MANUFACTURER'S PRINTED INSTALLATION INSTRUCTIONS. IN ADDITION, FOLLOW THE PROVISIONS OF THE 2016 CALIFORNIA BUILDING CODE SECTION 1910A.5.5. FOR ADHESIVE ANCHORS - TENSION TESTING BY THE HYDRAULIC RAM METHOD SHALL USE A TENSION FORCE OF 2500 POUNDS. TENSION TESTING SHALL BE DONE IN THE PRESENCE OF THE SPECIAL INSPECTOR. TORQUE CONTROLLED POST-INSTALLED ANCHORS - TEST USING A CALIBRATED TORQUE WRENCH; 40 FOOT-POUNDS TORQUE SHALL BE ACHIEVED WITHIN ONE-HALF TURN OF THE NUT. TEST 50% OF THE ANCHORS FOR EACH PIECE OF EQUIPMENT. IF ANY ANCHOR FAILS TEST ALL ANCHORS. REPORT OF TEST RESULTS ARE TO BE SUBMITTED TO THE ENFORCEMENT AGENCY. THE SEOR SHALL PROVIDE REMEDIAL ANCHORAGE DETAILS IN THE EVENT THAT AN ANCHOR FAILS TO MEET THE TEST REQUIREMENTS. FOR THROUGH BOLTS MARK THE NUT LOCATION AT SNUG TIGHT CONDITION. INSPECTOR IS TO VERIFY 3/4 TURN.
3. STRENGTH DESIGN WAS USED FOR ANCHOR FORCE CALCULATIONS INCLUDING  $\Omega_0$  PER ACI 318-14 WHERE REQUIRED FOR ATTACHMENT TO CONCRETE.
4. PROVIDE FOR FULL THREAD ENGAGEMENT OF THE NUT AND WASHER.

**RESPONSIBILITIES OF THE STRUCTURAL ENGINEER OF RECORD**

1. CONFIRM THE MATERIAL PROPERTIES AND THICKNESS OF THE CONCRETE SLAB TO WHICH THE EQUIPMENT IS ATTACHED MEETS THE REQUIREMENTS OF THIS OPM.
2. PROVIDE A PLAN FOR INSPECTION OF SUPPORTS AND ATTACHMENTS AND VERIFY ITS IMPLEMENTATION.
3. CONFIRM THE SPECIFIED MINIMUM CONCRETE EDGE DISTANCES ARE MAINTAINED BASED ON THE ACTUAL EQUIPMENT LOCATION. VERIFY THAT EXISTING OR NEW ANCHORS ARE AN ADEQUATE DISTANCE FROM THIS UNIT'S ATTACHMENT.
4. VERIFY THAT THE EXISTING STRUCTURE IS ADEQUATE FOR THE IMPOSED DEAD, LATERAL AND TENSION FORCES SHOWN IN ADDITION TO ALL OTHER LOADS.
5. VERIFY THAT THE INSTALLATION IS IN CONFORMANCE WITH CBC 2016 AND WITH THE OPM-0438-13 DETAILS INCLUDING MATERIALS AND DIMENSIONS OF THE SUPPORT WHERE THE ATTACHMENTS ARE MADE AGREE WITH THE INFORMATION SHOWN.
6. VERIFY THAT THE PROJECT SPECIFIC  $S_{DS}$  AND  $z/h$  VALUES RESULT IN SEISMIC FORCES ( $E_H$  AND  $E_v$ ) DO NOT EXCEED THE VALUES SHOWN IN THESE DETAILS.

OPM-0438-13 MEDISAFE WASHERS / STERILIZERS ATTACHMENT NOTES



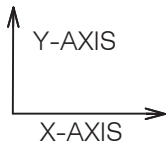
A Division of Tomarco Contractor Specialties  
International Seismic Application Technology  
1020 Crews Road, Suite Q, Matthews, NC 28105  
704-841-4080 www.isatsb.com



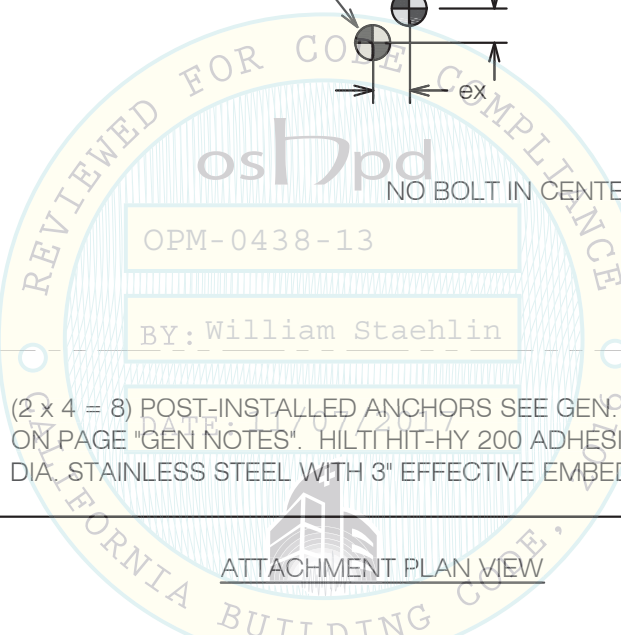
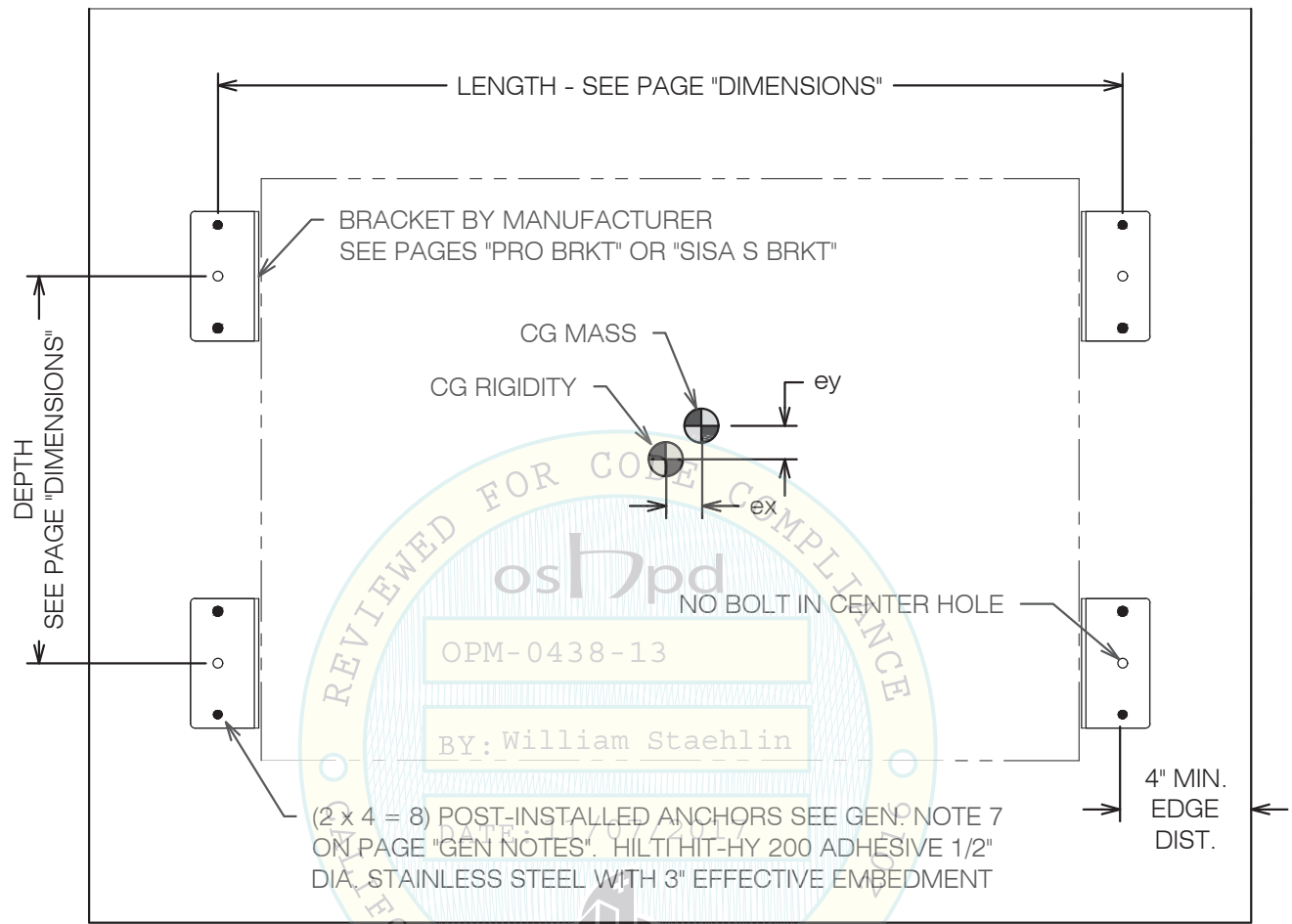
<b>DRAWN BY:</b> WVJ	<b>DATE:</b> 07/24/17
<b>REVISED BY:</b> WVJ	<b>DATE:</b> 10/26/17
<b>REV NO:</b> 2	

<b>SCALE</b> N.T.S.	<b>PAGE</b> ATTACH NOTES
------------------------	-----------------------------

OSHPD OPM-0438-13 DWG - 2



SEE PAGE "DIMENSIONS" FOR ECCENTRICITIES AND "FORCES" FOR ANCHOR FORCES



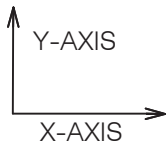
OPM-0438-13  
 BY: William Staehlin

OPM-0438-13 MEDISAFE WASHERS / STERILIZERS AT GRADE

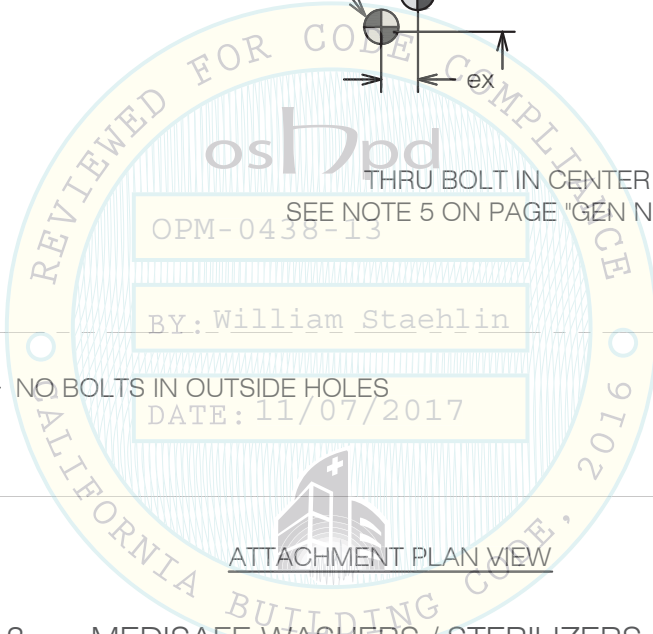
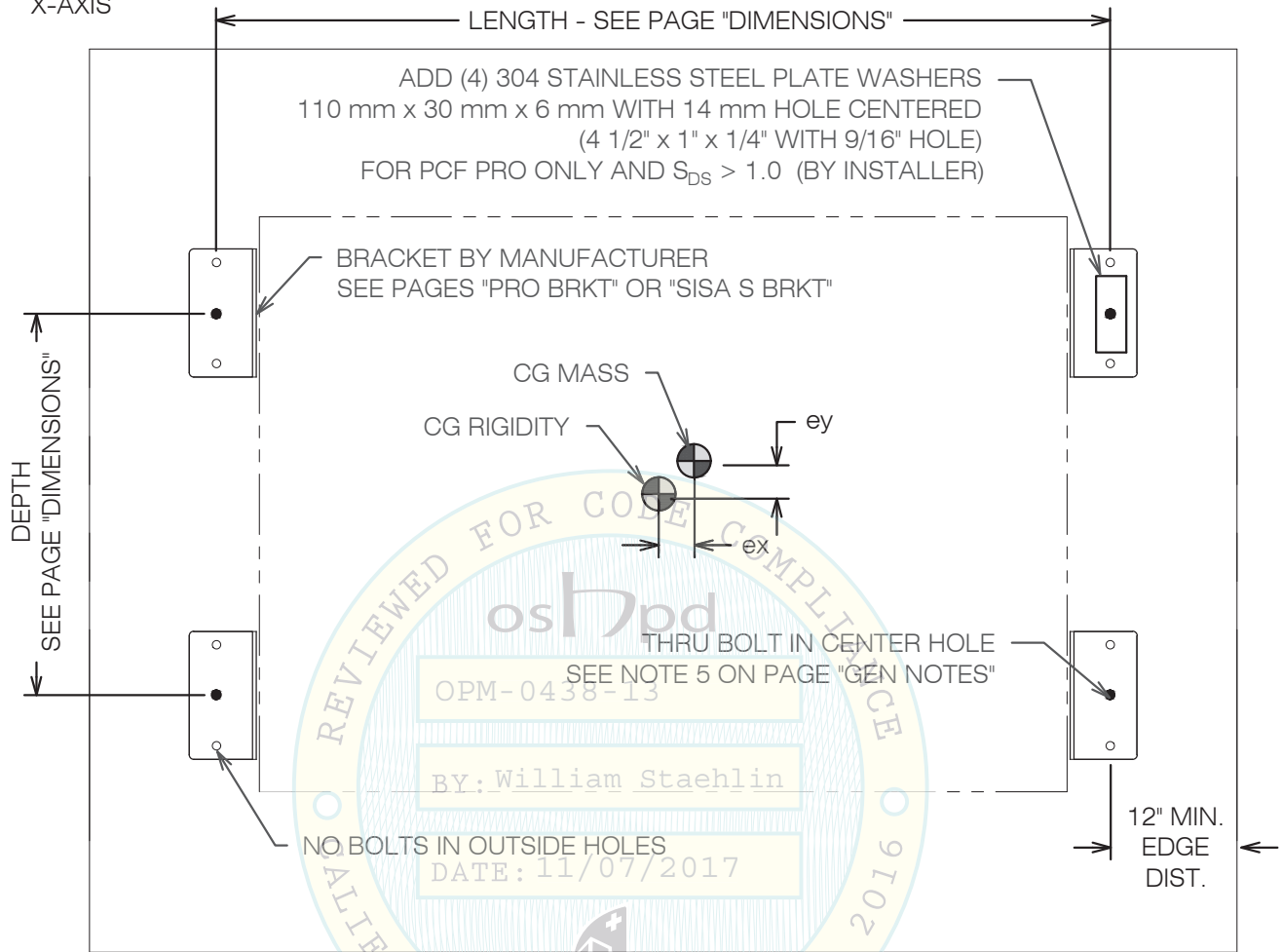


**A Division of Tomarco Contractor Specialties  
 International Seismic Application Technology**  
 1020 Crews Road, Suite Q, Matthews, NC 28105  
 704-841-4080 www.isatsb.com

	DRAWN BY: WVJ	
	DATE: 07/24/17	
	REVISED BY: WVJ	
		DATE: 10/26/17
		REV NO: 2
SCALE	PAGE	
N.T.S.	AT GRADE	



SEE PAGE "DIMENSIONS" FOR ECCENTRICITIES AND "FORCES" FOR ANCHOR FORCES



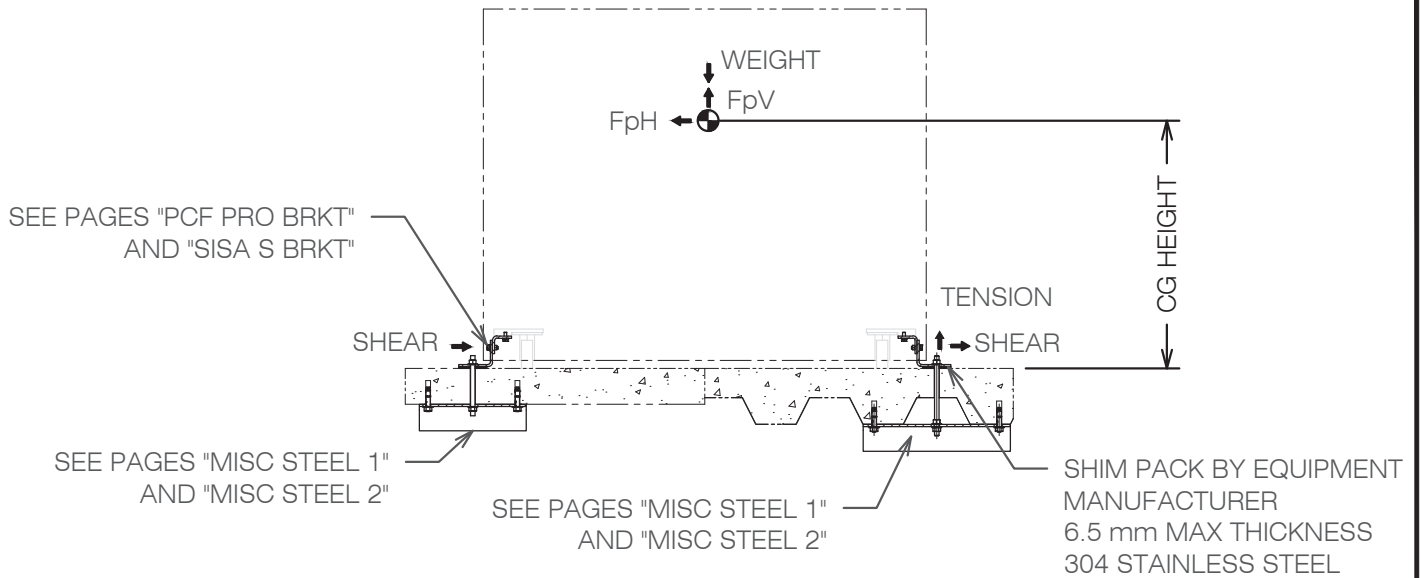
OPM-0438-13  
 BY: William Staehlin  
 DATE: 11/07/2017

OPM-0438-13 MEDISAFE WASHERS / STERILIZERS AT ELEVATED SLAB

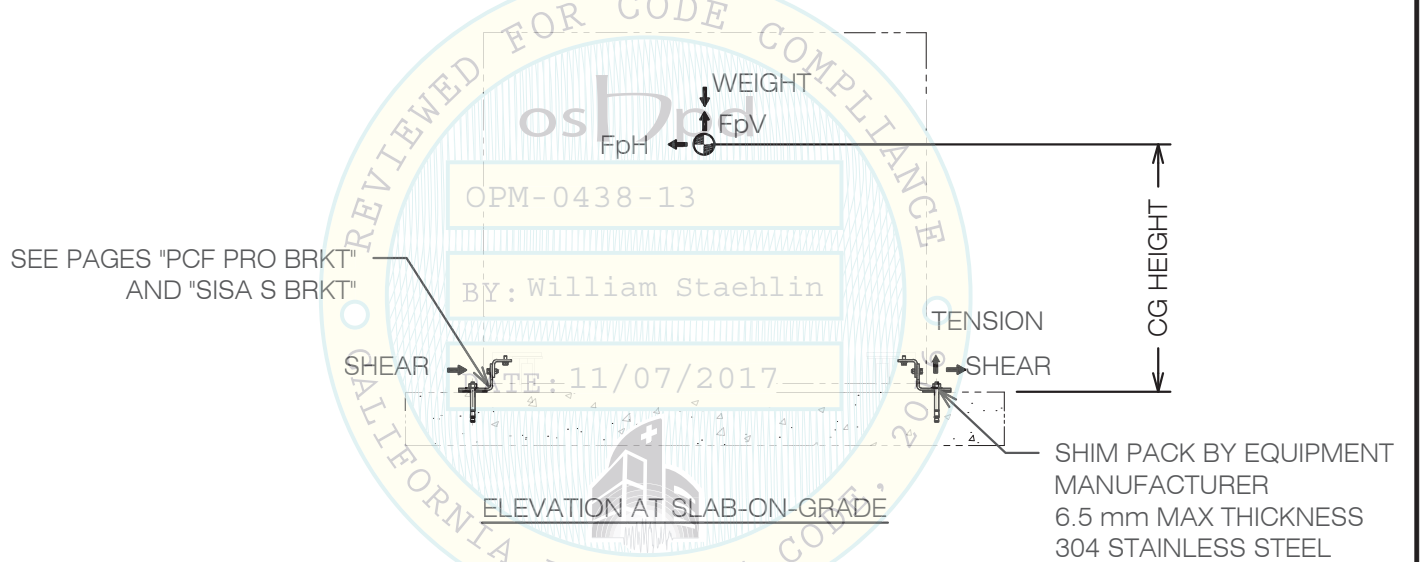
 <b>A Division of Tomarco Contractor Specialties</b> <b>International Seismic Application Technology</b> 1020 Crews Road, Suite Q, Matthews, NC 28105 704-841-4080 www.isatsb.com		
 <i>WVJ 26 Oct 17</i>	<b>DRAWN BY:</b> WVJ <b>DATE:</b> 07/24/17	
	<b>REVISED BY:</b> WVJ <b>DATE:</b> 10/26/17 <b>REV NO:</b> 2	
	<table border="1"> <tr> <td><b>SCALE</b> N.T.S.</td> <td><b>PAGE</b> ELEVATED</td> </tr> </table>	<b>SCALE</b> N.T.S.
<b>SCALE</b> N.T.S.	<b>PAGE</b> ELEVATED	

OSHPD OPM-0438-13 DWG - 4





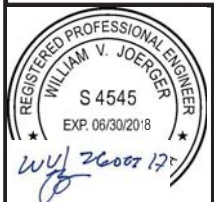
ELEVATION AT ELEVATED SLABS

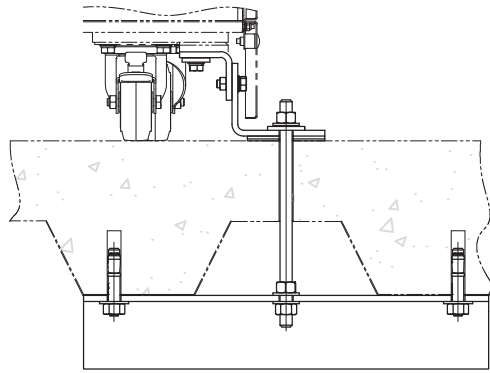


OPM-0438-13 MEDISAFE WASHERS / STERILIZERS EQUIPMENT ELEVATIONS

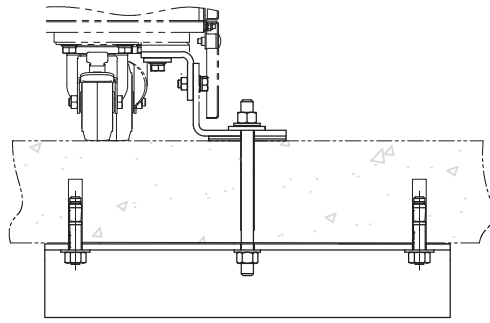


**A Division of Tomarco Contractor Specialties  
International Seismic Application Technology**  
1020 Crews Road, Suite Q, Matthews, NC 28105  
704-841-4080 www.isatsb.com

	DRAWN BY: WVJ	
	DATE: 07/24/17	
	REVISED BY: WVJ	
		DATE: 10/26/17
		REV NO: 2
SCALE N.T.S.	PAGE ELEVATIONS	



DETAIL ANCHOR CENTER OF HIGH FLUTE



DETAIL AT SOLID CONCRETE SLAB

MOUNTING SCREWS HEX HD M8  
ISO4017 SS WITH PLAIN  
WASHER AND SPRING WASHER

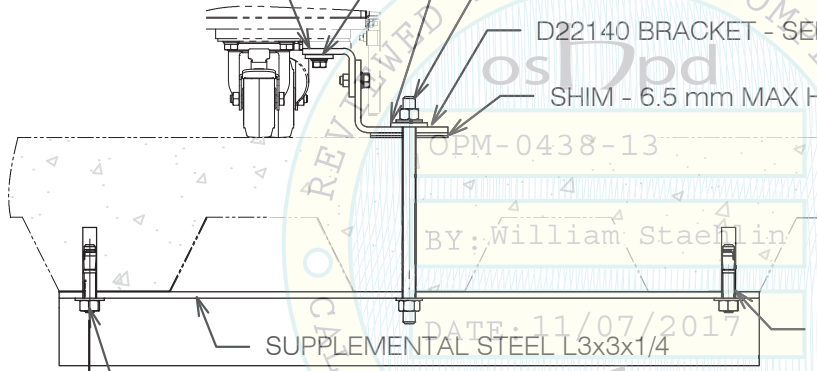
D22138 BRACKET  
SEE PAGE  
"PCF PRO BRKT"

ADD (4) 304 STAINLESS STEEL PLATE WASHERS 110 mm x  
30 mm x 6 mm WITH 14 mm HOLE (4 1/2" x 1" x 1/4" WITH  
9/16" HOLE) FOR PCF PRO ONLY AND  $S_{DS} > 1.0$

(4) 1/2" ASTM F593 CW1 304 STAINLESS STEEL ALL THREAD  
ROD OR THRU BOLTS WITH MATCHING NUTS AND WASHERS.  
DRILL 9/16" HOLES IN CONCRETE. FINGER TIGHTEN NUTS.

D22140 BRACKET - SEE PAGE "PCF PRO BRKT"

SHIM - 6.5 mm MAX HEIGHT



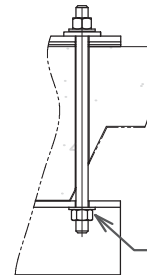
SUPPLEMENTAL STEEL L3x3x1/4

9/16" HOLES  
IN L3 TYP.

1"  
MIN.

NOTE 7 ON PAGE "GEN NOTES"

DETAIL ANCHOR CENTER OF LOW FLUTE  
NOTES APPLY TO ALL SLAB CONFIGURATIONS

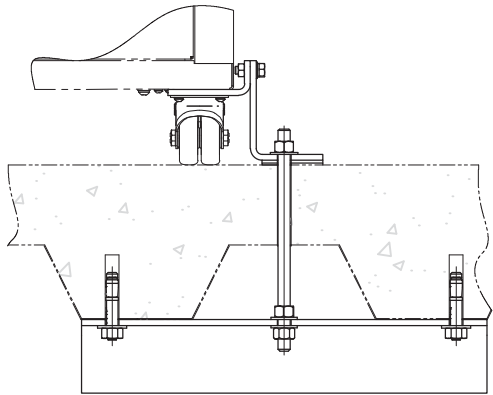


TACK  
WELD NUT

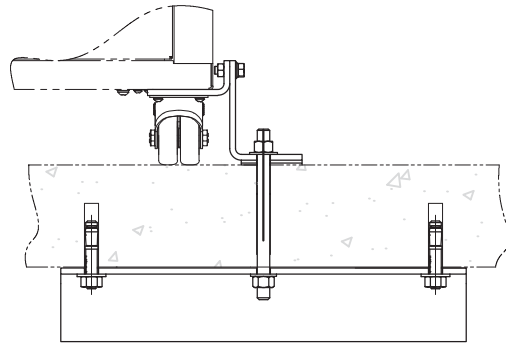
DETAIL ANCHOR AT SIDE OF FLUTE

OPM-0438-13 MEDISAFE PCF PRO WASHERS / STERILIZERS  
MISCELLANEOUS STEEL DRAWING 1

 <b>A Division of Tomarco Contractor Specialties</b> <b>International Seismic Application Technology</b> 1020 Crews Road, Suite Q, Matthews, NC 28105 704-841-4080 www.isatsb.com		
 <i>WVJ 26 Oct 17</i>	<b>DRAWN BY:</b> WVJ <b>DATE:</b> 07/24/17	
	<b>REVISED BY:</b> WVJ <b>DATE:</b> 10/26/17 <b>REV NO:</b> 2	
	<table border="1"> <tr> <td><b>SCALE</b> N.T.S.</td> <td><b>PAGE</b> MISC. STEEL 1</td> </tr> </table>	<b>SCALE</b> N.T.S.
<b>SCALE</b> N.T.S.	<b>PAGE</b> MISC. STEEL 1	



DETAIL ANCHOR CENTER OF HIGH FLUTE



DETAIL AT SOLID CONCRETE SLAB

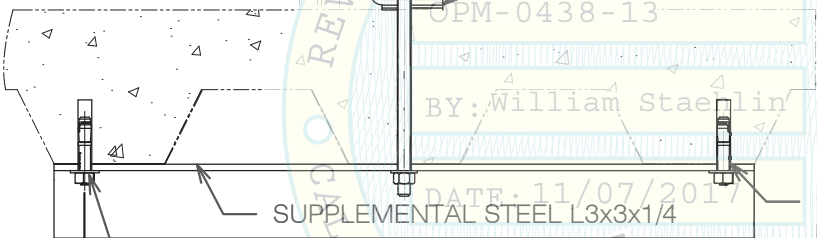
MOUNTING SCREWS HEX HD M8  
ISO4017 SS WITH PLAIN  
WASHER AND SPRING WASHER

D21886 BRACKET  
SEE PAGE  
"SISA S BRKT"

(4) 1/2" ASTM F593 304 STAINLESS STEEL ALL THREAD ROD  
OR THRU BOLTS WITH MATCHING NUTS AND WASHERS.  
DRILL 9/16" HOLES IN CONCRETE. FINGER TIGHTEN NUTS.

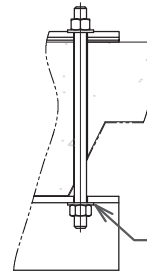
D21887 BACK / D22148 RH FRONT / D22149 LH FRONT  
BRACKETS - SEE PAGE "SISA S BRKT"

SHIM - 6.5 mm MAX HEIGHT



SUPPLEMENTAL STEEL L3x3x1/4

9/16" HOLES  
IN L3-TYP.



TACK  
WELD NUT

1"  
MIN.

NOTE 7 ON PAGE "GEN NOTES"

DETAIL ANCHOR CENTER OF LOW FLUTE  
NOTES APPLY TO ALL SLAB CONFIGURATIONS

DETAIL ANCHOR AT SIDE OF FLUTE

OPM-0438-13 MEDISAFE PCF S AND SISA S WASHERS / STERILIZERS  
MISCELLANEOUS STEEL DRAWING 2



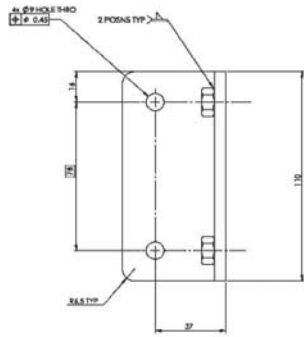
**A Division of Tomarco Contractor Specialties  
International Seismic Application Technology**  
1020 Crews Road, Suite Q, Matthews, NC 28105  
704-841-4080 www.isatsb.com



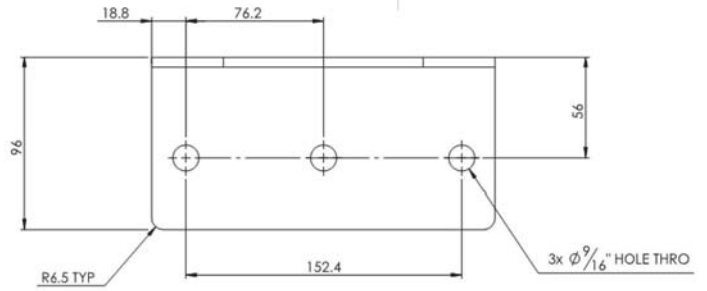
**DRAWN BY:** WVJ  
**DATE:** 07/24/17  
**REVISED BY:** WVJ  
**DATE:** 10/26/17  
**REV NO:** 2

**SCALE** **PAGE**  
N.T.S. MISC. STEEL 2

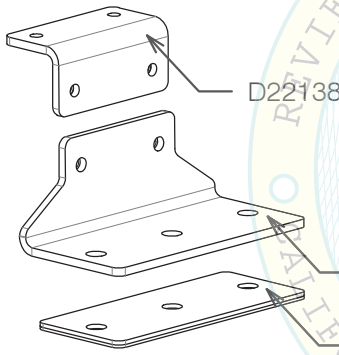
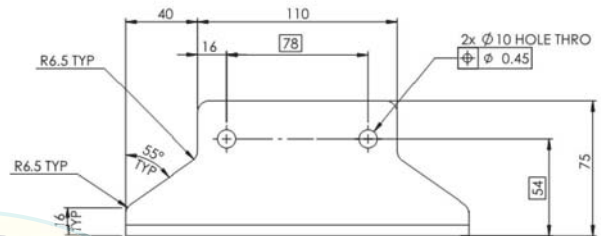
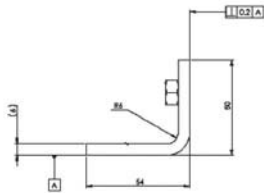
OSHPD OPM-0438-13 DWG - 7



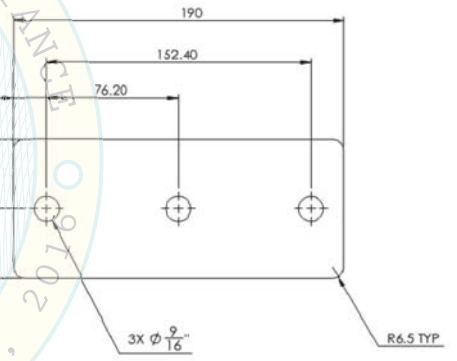
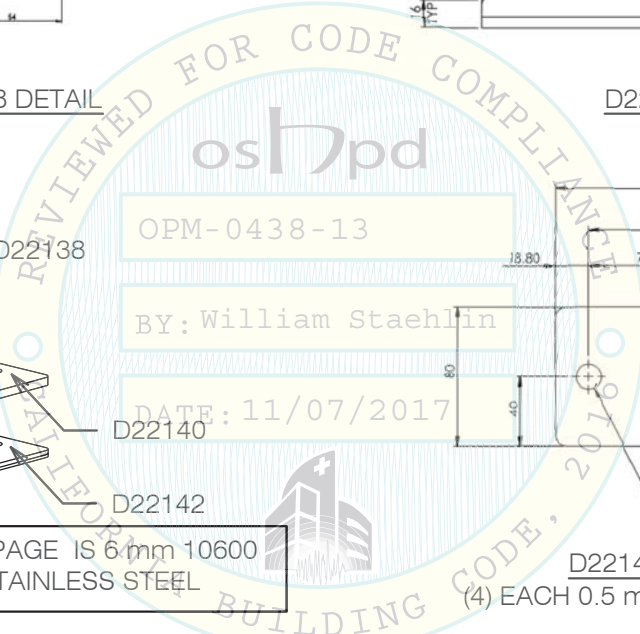
D22138 DETAIL



D22140 DETAIL



ALL MATERIAL THIS PAGE IS 6 mm 10600 (304-2B-6mm) STAINLESS STEEL



D22142 SHIM DETAIL

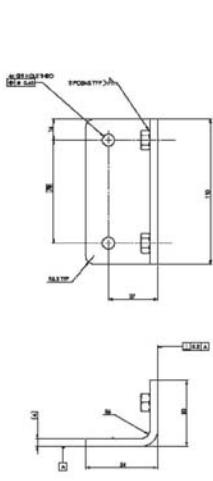
(4) EACH 0.5 mm, 1 mm, 2 mm AND 3 mm

OPM-0438-13 MEDISAFE PCF PRO BRACKETS

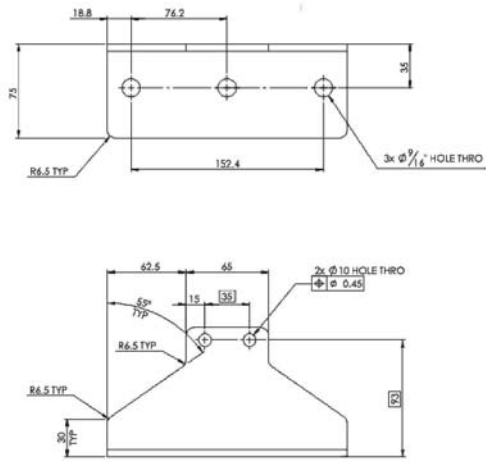


**A Division of Tomarco Contractor Specialties  
International Seismic Application Technology**  
1020 Crews Road, Suite Q, Matthews, NC 28105  
704-841-4080 www.isatsb.com

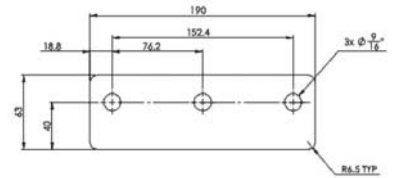
	DRAWN BY: WVJ	
	DATE: 07/24/17	
	REVISED BY: WVJ	DATE: 10/26/17
		REV NO: 2
SCALE	PAGE	
N.T.S.	PCF PRO BRKT	



D21886 DETAIL

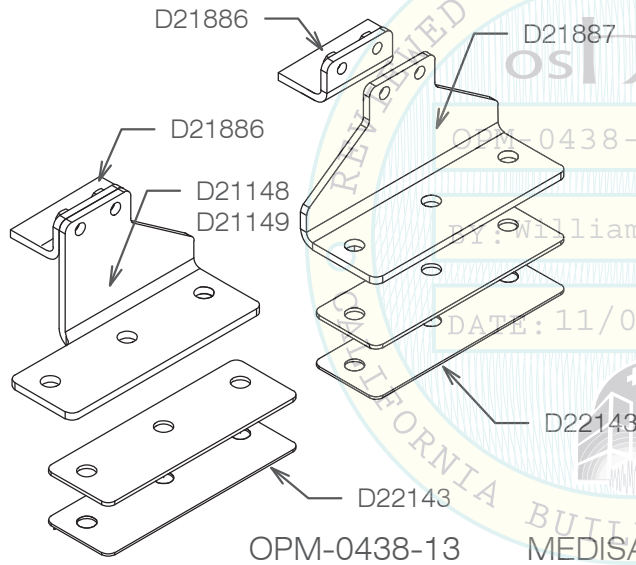


D21887 DETAIL

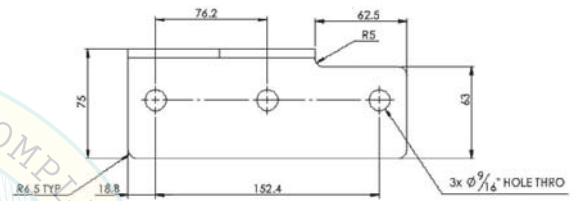


D22142 SHIM DETAIL  
(4) EACH 0.5 mm, 1 mm, 2 mm AND 3 mm

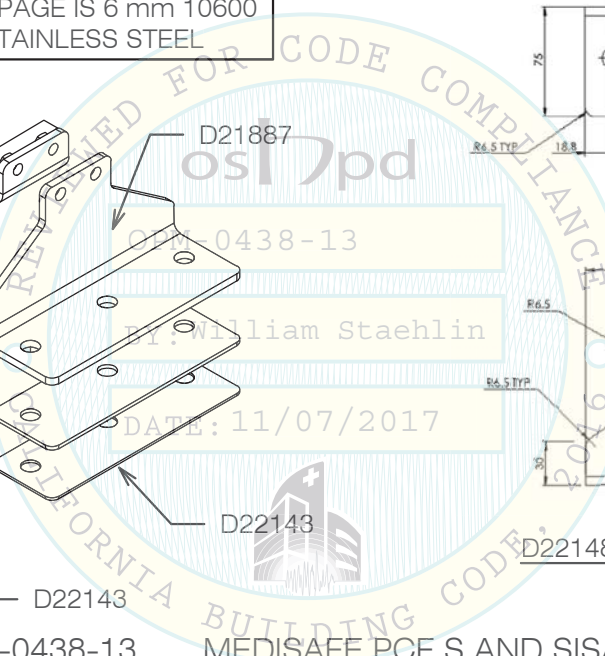
ALL MATERIAL THIS PAGE IS 6 mm 10600 (304-2B-6mm) STAINLESS STEEL



OPM-0438-13 MEDISAFE PCF S AND SISA S BRACKETS



D22148 RH AND D22149 LH DETAIL






**A Division of Tomarco Contractor Specialties  
International Seismic Application Technology**  
1020 Crews Road, Suite Q, Matthews, NC 28105  
704-841-4080 www.isatsb.com

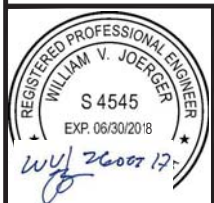
	DRAWN BY: WVJ DATE: 07/24/17	
	REVISED BY: WVJ DATE: 10/26/17 REV NO: 2	
	SCALE N.T.S.	PAGE SISA S BRKT

MEDISAFE WASHERS / STERILIZERS									
Equipment Data					Anchor Dimensions		Equipment Eccentricities		
Model Series	Model	Max. Water Fill	Lid	Weight (lbs)	Length (in)	Depth (in)	ex (in)	ey (in)	ez (in)
PCF S	MED11100 S	NO	---	314.12	37.4	19.45	0.00	0.00	22.55
PCF S	MED11100 S	YES	---	417.56	37.4	19.45	0.12	0.11	24.61
PCF S	MED11110 S	NO	---	314.12	37.4	19.45	0.00	0.00	22.55
PCF S	MED11110 S	YES	---	417.56	37.4	19.45	0.12	0.11	24.61
PCF S	MED11120 S	NO	---	314.12	37.4	19.45	0.00	0.00	22.55
PCF S	MED11120 S	YES	---	417.56	37.4	19.45	0.12	0.11	24.61
PCF S	MED11121 S	NO	---	314.12	37.4	19.45	0.00	0.00	22.55
PCF S	MED11121 S	YES	---	417.56	37.4	19.45	0.12	0.11	24.61
PCF S	MED11121UL S	NO	---	314.12	37.4	19.45	0.00	0.00	22.55
PCF S	MED11121UL S	YES	---	417.56	37.4	19.45	0.12	0.11	24.61
PCF S	MED11122 S	NO	---	314.12	37.4	19.45	0.00	0.00	22.55
PCF S	MED11122 S	YES	---	417.56	37.4	19.45	0.12	0.11	24.61
PCF S	MED11123 S	NO	---	314.12	37.4	19.45	0.00	0.00	22.55
PCF S	MED11123 S	YES	---	417.56	37.4	19.45	0.12	0.11	24.61
SISA S	MP21899	NO	---	149.12	32.32	13.94	0.00	0.00	25.34
SISA S	MP21899	YES	---	200.9	32.32	13.94	0.35	0.21	27.07
SISA S	MP21900	NO	---	149.12	32.32	13.94	0.00	0.00	25.34
SISA S	MP21900	YES	---	200.9	32.32	13.94	0.35	0.21	27.07
SISA S	MP21901	NO	---	149.12	32.32	13.94	0.00	0.00	25.34
SISA S	MP21901	YES	---	200.9	32.32	13.94	0.35	0.21	27.07
SISA S	MP21902	NO	---	149.12	32.32	13.94	0.00	0.00	25.34
SISA S	MP21902	YES	---	200.9	32.32	13.94	0.35	0.21	27.07
PCF PRO	MED11180	NO	UP	973.87	51.97	25.59	0.00	0.00	27.46
PCF PRO	MED11180	NO	DOWN	973.87	51.97	25.59	0.00	0.00	23.16
PCF PRO	MED11180	YES	DOWN	1353.62	51.97	25.59	0.375	0.247	24.33

OPM-0438-13 MEDISAFE WASHERS / STERILIZERS  
EQUIPMENT DIMENSIONS AND ECCENTRICITIES



**A Division of Tomarco Contractor Specialties  
International Seismic Application Technology**  
1020 Crews Road, Suite Q, Matthews, NC 28105  
704-841-4080 www.isatsb.com

	DRAWN BY: WVJ DATE: 07/24/17	
	REVISED BY: WVJ DATE: 10/26/17 REV NO: 2	
	SCALE N.T.S.	PAGE DIMENSIONS

OSHPD OPM-0438-13 DWG - 10

## MEDISAFE WASHERS / STERILIZERS

Equipment Data					Seismic Design Forces at Grade		Seismic Design Forces at Elevated	
Model Series	Model	Max. Water Fill	Lid	Weight	Vu (lbs.)	Tu (lbs.)	Vu (lbs.)	Tu (lbs.)
PCF S	MED11100 S	NO	---	314.12	66	150	353	584
PCF S	MED11100 S	YES	---	417.56	89	220	473	852
PCF S	MED11110 S	NO	---	314.12	66	150	353	584
PCF S	MED11110 S	YES	---	417.56	89	220	473	852
PCF S	MED11120 S	NO	---	314.12	66	150	353	584
PCF S	MED11120 S	YES	---	417.56	89	220	473	852
PCF S	MED11121 S	NO	---	314.12	66	150	353	584
PCF S	MED11121 S	YES	---	417.56	89	220	473	852
PCF S	MED11121UL S	NO	---	314.12	66	150	353	584
PCF S	MED11121UL S	YES	---	417.56	89	220	473	852
PCF S	MED11122 S	NO	---	314.12	66	150	353	584
PCF S	MED11122 S	YES	---	417.56	89	220	473	852
PCF S	MED11123 S	NO	---	314.12	66	150	353	584
PCF S	MED11123 S	YES	---	417.56	89	220	473	852
SISA S	MED21899	NO	---	149.12	31	113	168	428
SISA S	MED21899	YES	---	200.9	44	164	230	616
SISA S	MED21900	NO	---	149.12	31	113	168	428
SISA S	MED21900	YES	---	200.9	44	164	230	616
SISA S	MED21901	NO	---	149.12	31	113	168	428
SISA S	MED21901	YES	---	200.9	44	164	230	616
SISA S	MED21902	NO	---	149.12	31	113	168	428
SISA S	MED21902	YES	---	200.9	44	164	230	616
PCF PRO	MED11180	NO	UP	973.87	205	418	1,096	1,650
PCF PRO	MED11180	NO	DOWN	973.87	205	341	1,096	1,376
PCF PRO	MED11180	YES	DOWN	1353.6	294	508	1,544	2,022

- WEIGHTS AND MOMENTS ARE FACTORED LOADS USING STRENGTH DESIGN AND INCLUDE THE FOLLOWING FACTORS: DL = 0.9, FpH AT GRADE = 1.13, FpH ELEVATED = 3.0 AND FpV = 0.5.
- TABULATED FORCES ARE PER ANCHOR AT STRENGTH DESIGN LEVEL AND INCLUDE A CONCRETE OVERSTRENGTH FACTOR  $\Omega_0 = 1.5$ .

OPM-0438-13      MEDISAFE WASHERS / STERILIZERS ANCHORAGE FORCES



**A Division of Tomarco Contractor Specialties  
International Seismic Application Technology**  
1020 Crews Road, Suite Q, Matthews, NC 28105  
704-841-4080    www.isatsb.com

	DRAWN BY: WVJ	
	DATE: 07/24/17	
	REVISED BY: WVJ	
		DATE: 10/26/17
		REV NO: 2
SCALE N.T.S.	PAGE FORCES	

OSHPD OPM-0438-13 DWG - 11