



OFFICE OF STATEWIDE HEALTH PLANNING AND DEVELOPMENT
FACILITIES DEVELOPMENT DIVISION

APPLICATION FOR OSHPD PREAPPROVAL
OF MANUFACTURER'S CERTIFICATION (OPM)

OFFICE USE ONLY
APPLICATION #: OPM-0439-13

OSHPD Preapproval of Manufacturer's Certification (OPM)

Type: [X] New [] Renewal [] Update to Pre-CBC 2013 OPA Number:

Manufacturer Information

Manufacturer: Medisafe

Manufacturer's Technical Representative: Neil May

Mailing Address: Twyford Road, Bishop's Stortford, Hertordshire CM23 3LJ, UK

Telephone: +44(0)1279 461641 Email: nmay@medisafeinternational.com

Product Information

Product Name: InnoWave PCF, InnoWave Ultra+ with cabinet, InnoWave PRO

Product Type: Washer / Sterilizer

Product Model Number: IW PCF, IW ULTRAPLCAB, IW PRO60

General Description: The sonic washer and sterilizer series (PRO60, PCF, SISA) named and numbered under the Steris InnoWave (IW) brand for the American market. Models are identical to Medisafe counterparts except for label color (for instance IW PRO60 = MED11180).

Applicant Information

Applicant Company Name: ISAT Seismic Bracing

Contact Person: William V Joerger

Mailing Address: 1020 Crews Road, Suite Q, Matthews NC 28105

Telephone: 510-714-0216 Email: wvjoerger@isatsb.com

I hereby agree to reimburse the Office of Statewide Health Planning and Development review fees in accordance with the California Administrative Code, 2016.

Signature of Applicant: [Signature] Date: 27 July, 2017

Title: Principal Structural Engineer Company Name: ISAT Seismic Bracing





**OFFICE OF STATEWIDE HEALTH PLANNING AND DEVELOPMENT
FACILITIES DEVELOPMENT DIVISION**

Registered Design Professional Preparing Engineering Recommendations

Company Name: ISAT Seismic Bracing

Name: William V Joerger California License Number: SE4545

Mailing Address: 1020 Crews Rd, Matthews NC 28105

Telephone: 510-714-0216 Email: wvjoerger@isatsb.com

OSHPD Special Seismic Certification Preapproval (OSP)

- Special Seismic Certification is preapproved under OSP-
(Separate application for OSP is required)
- Special Seismic Certification is not preapproved

Certification Method(s)

- Testing in accordance with: ICC-ES AC156 FM 1950-16
- Other* (Please Specify): Equipment is considered to be rugged. OPM is for anchorage to concrete slabs.

OPM-0439-13

*Use of criteria other than those adopted by the California Building Standards Code, 2016 (CBSC 2016) for component supports and attachments are not permitted. For distribution system, interior partition wall, and suspended ceiling seismic bracings, test criteria other than those adopted in the CBSC 2016 may be used when approved by OSHPD prior to testing.

- Analysis
- Experience Data
- Combination of Testing, Analysis, and/or Experience Data (Please Specify): _____

DATE: 11/07/2017

List of Attachments Supporting the Manufacturer's Certification

- Test Report Drawings Calculations Manufacturer's Catalog
- Other(s) (Please Specify): _____

OFFICE USE ONLY – OSHPD APPROVAL VALID FOR CBC 2016 & ALL PRE-2016 CODE BASED PROJECTS

Signature: *William Staehlin* Date: 11-07-2017

Print Name: William Staehlin

Title: SSE

Condition of Approval (if applicable): _____

"Access to Safe, Quality Healthcare Environments that Meet California's Diverse and Dynamic Needs"





INTERNATIONAL SEISMIC APPLICATION TECHNOLOGY

A Division of Tomarco Contractor Specialties

Submittal Documents

OPM-0439-13

OSHPD OPM-0439-13

BY: William Staehlin

SUPPORT AND ATTACHMENT CONSTRUCTION DRAWINGS

WASHERS AND STERILIZERS

STERIS

ISAT
1020 Crews Road Suite Q
Matthews, N.C. 28105
704-841-4080



WVJ 26007 17

FILE NO.: CLT-0617-075

"Empowered by Experience"

REV2

OSHPD OPM-0439-13 DWG - i



OSHPD OPM-0439-13

STERIS

DRAWING INDEX

INDEX

Cover Page	p i
Index Page	p ii
<u>Drawings for OPM-0439-13</u>	
General Notes	p 1
Attachment Notes	p 2
Steris Washers / Sterilizers at Grade	p 3
Steris Washers / Sterilizers at Elevated Slab	p 4
Steris Washers / Sterilizers Elevations	p 5
Steris PCF PRO Washers / Sterilizers Miscellaneous Steel Drawing 1	p 6
Steris PCF S and SISA S Washers / Sterilizers Miscellaneous Steel Drawing 2	p 7
Steris PCF Pro Brackets	p 8
Steris PCF S and SISA S Brackets	p 9
Steris Washers / Sterilizers Equipment Dimensions and Eccentricities	p 10
Steris Washers / Sterilizers Anchorage Forces	p 11

OSHPD OPM-0439-13 DWG - ii

OSHPD OPM-0439-13

MANUFACTURE: MEDISAFE

EQUIPMENT TYPE: WASHERS / STERILIZERS

GENERAL NOTES:

1. THIS OSHPD PREAPPROVAL OF MANUFACTURER'S CERTIFICATION (OPM) IS BASED ON THE CBC 2016. THE DEMAND (DESIGN FORCES) FOR USE WITH THIS OPM SHALL BE BASED ON THE CBC 2016.
2. SEISMIC CRITERIA USED: $S_{DS} = 2.5$ $I_p = 1.5$ $a_p = 1.0$ $R_p = 1.5$ (OTHER EQUIPMENT). FOR $z/h = 0$ $F_pH = 1.13$ AND FOR $z/h \leq 1.0$ $F_pH = 3.00$ AND $F_pV = 0.50$.
3. SUPPORT AND ATTACHMENT FORCES ARE DETERMINED USING ASCE 7-10 CHAPTER 13 "SEISMIC DESIGN REQUIREMENTS FOR NONSTRUCTURAL COMPONENTS". AN OVERSTRENGTH FACTOR $\Omega_0 = 1.5$ IS USED FOR CONCRETE MATERIALS PER ASCE 7-10 SUPPLEMENT 1 TABLE 13.6-1. LOADS SHOWN ARE STRENGTH DESIGN LOADS PER CBC 2016 SECTION 1605A.2.
4. THIS PREAPPROVAL COVERS ONLY THE SUPPORTS AND ATTACHMENTS OF THE EQUIPMENT TO THE STRUCTURE.
5. STEEL MATERIALS: PLATE 10600 (304-2B-6) STAINLESS STEEL BY MANUFACTURER ($F_y = 31.2$ KSI), ALL THREAD ROD ASTM F593 CW1 304 STAINLESS STEEL FOR BOLTS AT ELEVATED FLOORS, ANGLE ASTM A36 ($F_u = 58$ KSI) HOT DIPPED GALVANIZED.
6. CONCRETE SLABS:
 - a. FOR ELEVATED SOLID CONCRETE SLABS: 6" THICKNESS OF NORMAL WEIGHT CONCRETE WITH 3000 PSI MINIMUM STRENGTH.
 - b. METAL DECK: 3" DEEP COMPOSITE STEEL DECK, 20 GAGE MINIMUM, 4 1/2 INCH MINIMUM BOTTOM FLUTE WIDTH AND MINIMUM FLUTE SPACING OF 12", WITH 3 1/4 INCH SAND LIGHT WEIGHT CONCRETE CONCRETE COVER AT 3000 PSI MINIMUM
 - c. FOR SLAB ON GRADE: 6" THICKNESS NORMAL WEIGHT CONCRETE AT 3000 PSI MINIMUM STRENGTH.
7. POST-INSTALLED CONCRETE ANCHORS FOR SLAB ON GRADE: HILTI HIT-HY 200 HAS-R (ESR-3187) STAINLESS STEEL 1/2" DIAMETER WITH 3" EMBEDMENT. DRILL 9/16" DIAMETER x 4 INCH DEEP HOLE; CLEAN HOLE PER MANUFACTURER'S INSTRUCTIONS. FOR ANCHORS INTO THE SOFFIT OF THE METAL DECK USE KWIK BOLT TZ (ESR-1917) 1/2" DIAMETER x 4" MIN. HOLE DEPTH FOR 3 1/4" EFFECTIVE EMBEDMENT WITH 1" MAXIMUM OFFSET FROM THE CENTER OF THE METAL DECK FLUTE. BOTH ARE SUPPLIED BY INSTALLATION CONTRACTOR.
8. EXERCISE DUE CARE WHEN DRILLING POST-INSTALLED ANCHORS TO AVOID DAMAGING CONCRETE REINFORCEMENT OR TENDONS.



OPM-0439-13 STERIS WASHERS / STERILIZERS GENERAL NOTES

 <p>A Division of Tomarco Contractor Specialties International Seismic Application Technology 1020 Crews Road, Suite Q, Matthews, NC 28105 704-841-4080 www.isatsb.com</p>		
	DRAWN BY: WVJ DATE: 07/24/17	
	REVISED BY: WVJ DATE: 10/26/17 REV NO: 2	
	<table border="1"> <tr> <td>SCALE N.T.S.</td> <td>PAGE GEN NOTES</td> </tr> </table>	SCALE N.T.S.
SCALE N.T.S.	PAGE GEN NOTES	

OSHPD OPM-0439-13 DWG - 1

OSHPD OPM-0439-13

MANUFACTURE: MEDISAFE

EQUIPMENT TYPE: WASHERS / STERILIZERS


ATTACHMENT NOTES:

1. THIS OSHPD PREAPPROVAL OF MANUFACTURER'S CERTIFICATION (OPM) IS BASED ON THE CBC 2016. THE DEMAND (DESIGN FORCES) FOR USE WITH THIS OPM SHALL BE BASED ON THE CBC 2016.
2. PERIODIC SPECIAL INSPECTION PER CBC 2016 SECTION 1705A AND TABLE 1705A.3 INCLUDING VERIFICATION OF ANCHOR TYPE, ANCHOR DIMENSIONS, CONCRETE TYPE, CONCRETE COMPRESSIVE STRENGTH, ANCHOR SPACING, EDGE DISTANCES, CONCRETE MEMBER THICKNESS, HOLE DIMENSIONS, ANCHOR EMBEDMENT AND ADHERENCE TO THE MANUFACTURER'S PRINTED INSTALLATION INSTRUCTIONS. IN ADDITION, FOLLOW THE PROVISIONS OF THE 2016 CALIFORNIA BUILDING CODE SECTION 1910A.5.5. FOR ADHESIVE ANCHORS - TENSION TESTING BY THE HYDRAULIC RAM METHOD SHALL USE A TENSION FORCE OF 2500 POUNDS. TENSION TESTING SHALL BE DONE IN THE PRESENCE OF THE SPECIAL INSPECTOR. TORQUE CONTROLLED POST-INSTALLED ANCHORS - TEST USING A CALIBRATED TORQUE WRENCH; 40 FOOT-POUNDS TORQUE SHALL BE ACHIEVED WITHIN ONE-HALF TURN OF THE NUT. TEST 50% OF THE ANCHORS FOR EACH PIECE OF EQUIPMENT. IF ANY ANCHOR FAILS TEST ALL ANCHORS. REPORT OF TEST RESULTS ARE TO BE SUBMITTED TO THE ENFORCEMENT AGENCY. THE SEOR SHALL PROVIDE REMEDIAL ANCHORAGE DETAILS IN THE EVENT THAT AN ANCHOR FAILS TO MEET THE TEST REQUIREMENTS. FOR THROUGH BOLTS MARK THE NUT LOCATION AT SNUG TIGHT CONDITION. INSPECTOR IS TO VERIFY 3/4 TURN.
3. STRENGTH DESIGN WAS USED FOR ANCHOR FORCE CALCULATIONS INCLUDING Ω_0 PER ACI 318-14 WHERE REQUIRED FOR ATTACHMENT TO CONCRETE.
4. PROVIDE FOR FULL THREAD ENGAGEMENT OF THE NUT AND WASHER.

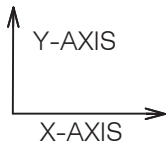
RESPONSIBILITIES OF THE STRUCTURAL ENGINEER OF RECORD

1. CONFIRM THE MATERIAL PROPERTIES AND THICKNESS OF THE CONCRETE SLAB TO WHICH THE EQUIPMENT IS ATTACHED MEETS THE REQUIREMENTS OF THIS OPM.
2. PROVIDE A PLAN FOR INSPECTION OF SUPPORTS AND ATTACHMENTS AND VERIFY ITS IMPLEMENTATION.
3. CONFIRM THE SPECIFIED MINIMUM CONCRETE EDGE DISTANCES ARE MAINTAINED BASED ON THE ACTUAL EQUIPMENT LOCATION. VERIFY THAT EXISTING OR NEW ANCHORS ARE AN ADEQUATE DISTANCE FROM THIS UNIT'S ATTACHMENT.
4. VERIFY THAT THE EXISTING STRUCTURE IS ADEQUATE FOR THE IMPOSED DEAD, LATERAL AND TENSION FORCES SHOWN IN ADDITION TO ALL OTHER LOADS.
5. VERIFY THAT THE INSTALLATION IS IN CONFORMANCE WITH CBC 2016 AND WITH THE OPM-0439-13 DETAILS INCLUDING MATERIALS AND DIMENSIONS OF THE SUPPORT WHERE THE ATTACHMENTS ARE MADE AGREE WITH THE INFORMATION SHOWN.
6. VERIFY THAT THE PROJECT SPECIFIC S_{DS} AND z/h VALUES RESULT IN SEISMIC FORCES (E_h AND E_v) DO NOT EXCEED THE VALUES SHOWN IN THESE DETAILS.

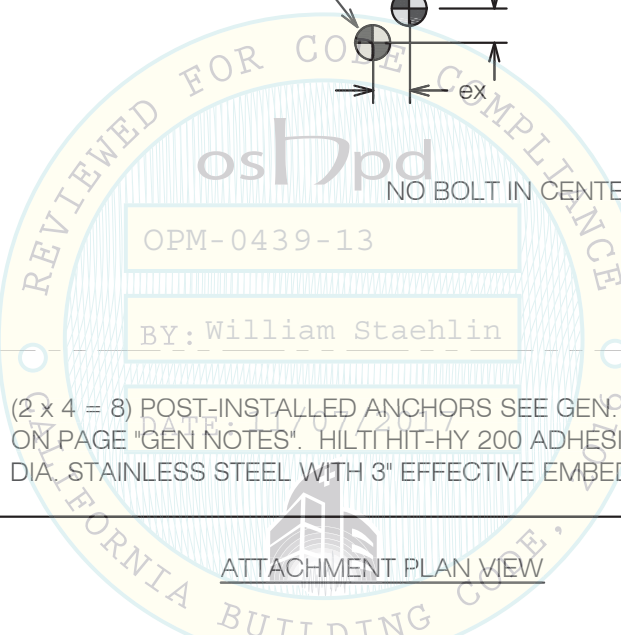
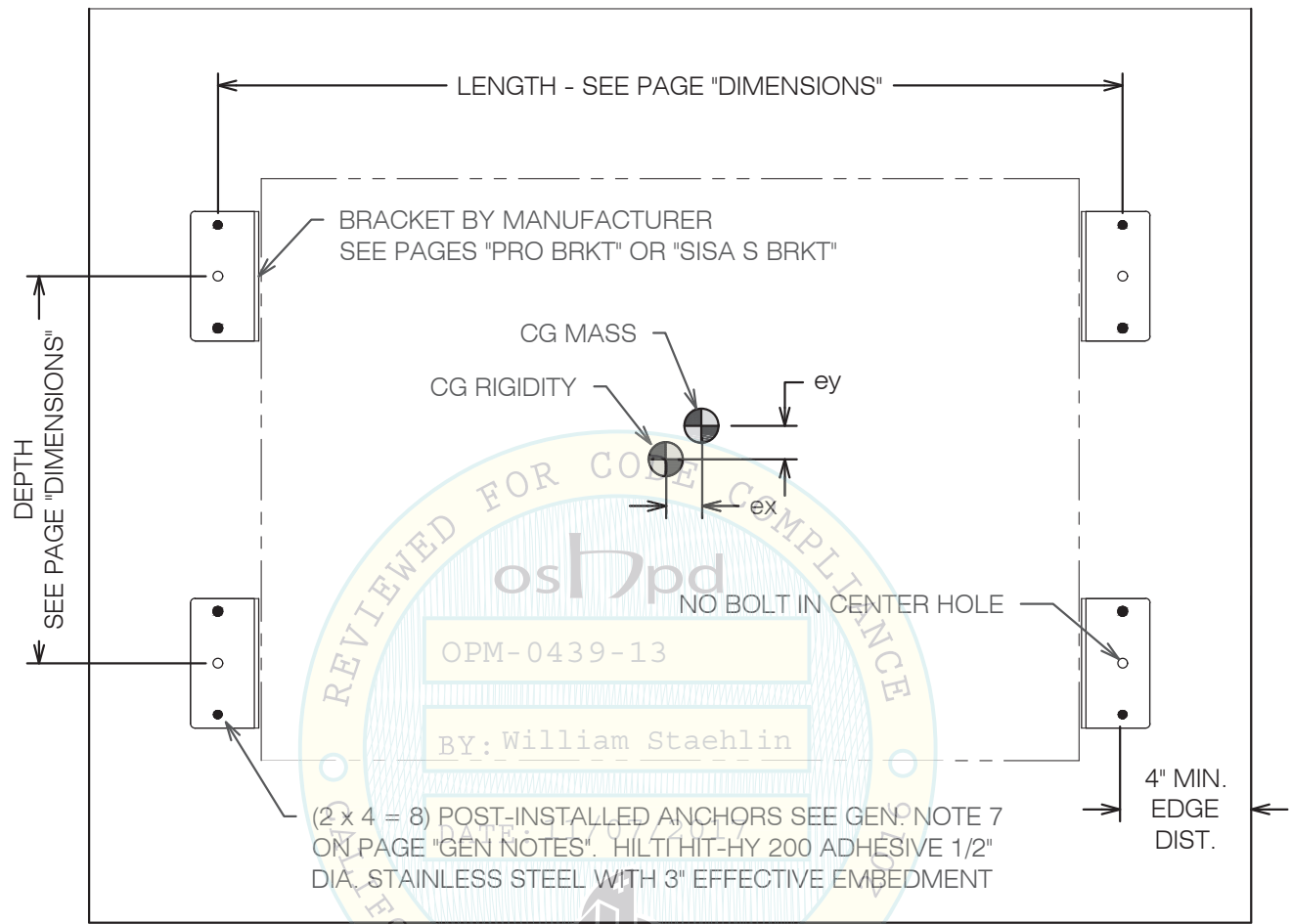
OPM-0439-13 STERIS WASHERS / STERILIZERS ATTACHMENT NOTES

 A Division of Tomarco Contractor Specialties International Seismic Application Technology 1020 Crews Road, Suite Q, Matthews, NC 28105 704-841-4080 www.isatsb.com		
 <i>WVJ 26 Oct 17</i>	DRAWN BY: WVJ DATE: 07/24/17	
	REVISED BY: WVJ DATE: 10/26/17 REV NO: 2	
	<table border="1"> <tr> <td>SCALE N.T.S.</td> <td>PAGE ATTACH NOTES</td> </tr> </table>	SCALE N.T.S.
SCALE N.T.S.	PAGE ATTACH NOTES	

OSHPD OPM-0439-13 DWG - 2



SEE PAGE "DIMENSIONS" FOR ECCENTRICITIES AND "FORCES" FOR ANCHOR FORCES



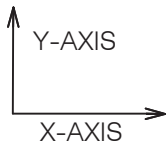
OPM-0439-13
 BY: William Staehlin

OPM-0439-13 STERIS WASHERS / STERILIZERS AT GRADE

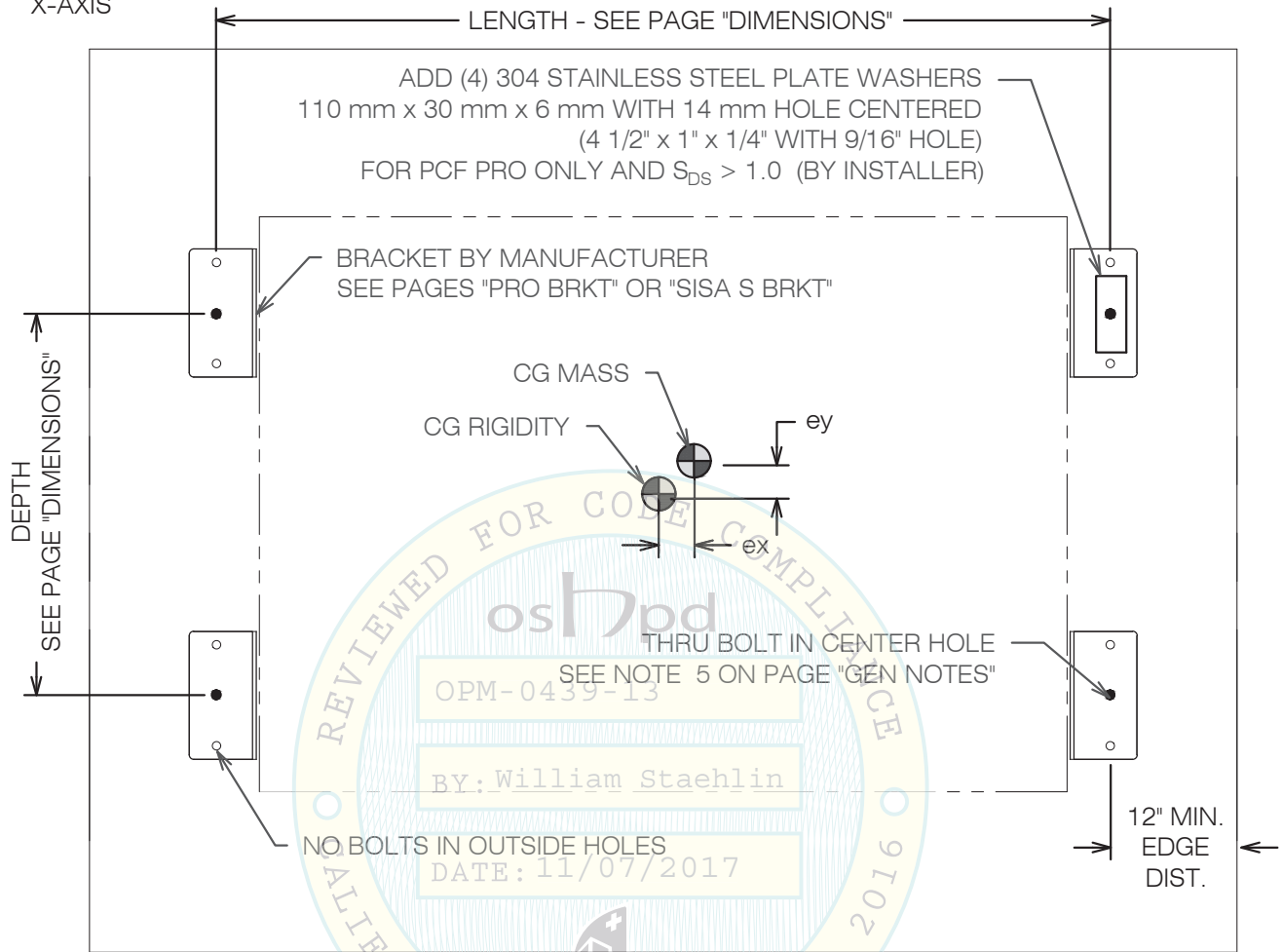


**A Division of Tomarco Contractor Specialties
 International Seismic Application Technology**
 1020 Crews Road, Suite Q, Matthews, NC 28105
 704-841-4080 www.isatsb.com

 <i>WVJ 26 Oct 17</i>	DRAWN BY: WVJ	
	DATE: 07/24/17	
	REVISED BY: WVJ	
		DATE: 10/26/17
		REV NO: 2
SCALE N.T.S.	PAGE AT GRADE	



SEE PAGE "DIMENSIONS" FOR ECCENTRICITIES AND "FORCES" FOR ANCHOR FORCES



ATTACHMENT PLAN VIEW

OPM-0439-13 STERIS WASHERS / STERILIZERS AT ELEVATED SLAB

ISAT

A Division of Tomarco Contractor Specialties
 International Seismic Application Technology
 1020 Crews Road, Suite Q, Matthews, NC 28105
 704-841-4080 www.isatsb.com

	DRAWN BY: WVJ	
	DATE: 07/24/17	
	REVISED BY: WVJ	
DATE: 10/26/17		
REV NO: 2		
SCALE	PAGE	
N.T.S.	ELEVATED	

SEE PAGES "IWPRO60 BRKT" AND "IWPCF BRKT"

SEE PAGES "MISC STEEL 1" AND "MISC STEEL 2"

SEE PAGES "MISC STEEL 1" AND "MISC STEEL 2"

SHIM PACK BY EQUIPMENT MANUFACTURER
6.5 mm MAX THICKNESS
304 STAINLESS STEEL

ELEVATION AT ELEVATED SLABS

SEE PAGES "IWPRO60 BRKT" AND "IWPCF BRKT"

OPM-0439-13

BY: William Staehlin

DATE: 11/07/2017

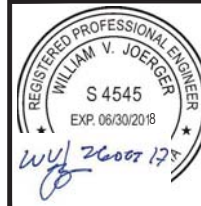
ELEVATION AT SLAB-ON-GRADE

SHIM PACK BY EQUIPMENT MANUFACTURER
6.5 mm MAX THICKNESS
304 STAINLESS STEEL

OPM-0439-13 STERIS WASHERS / STERILIZERS EQUIPMENT ELEVATIONS

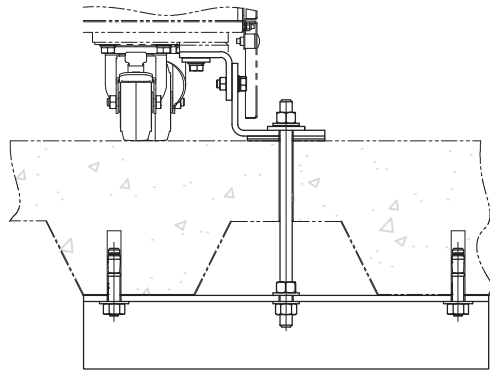


A Division of Tomarco Contractor Specialties
International Seismic Application Technology
1020 Crews Road, Suite Q, Matthews, NC 28105
704-841-4080 www.isatsb.com

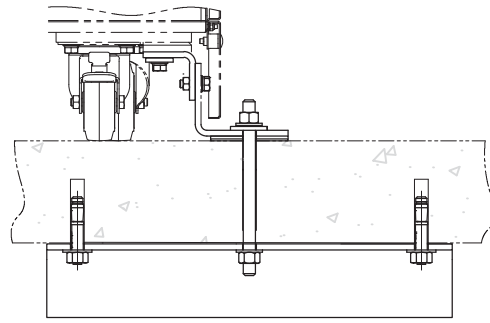


DRAWN BY: WVJ
DATE: 07/24/17
REVISED BY: WVJ
DATE: 10/26/17
REV NO: 2

SCALE: N.T.S. PAGE: ELEVATIONS



DETAIL ANCHOR CENTER OF HIGH FLUTE



DETAIL AT SOLID CONCRETE SLAB

MOUNTING SCREWS HEX HD M8
ISO4017 SS WITH PLAIN
WASHER AND SPRING WASHER

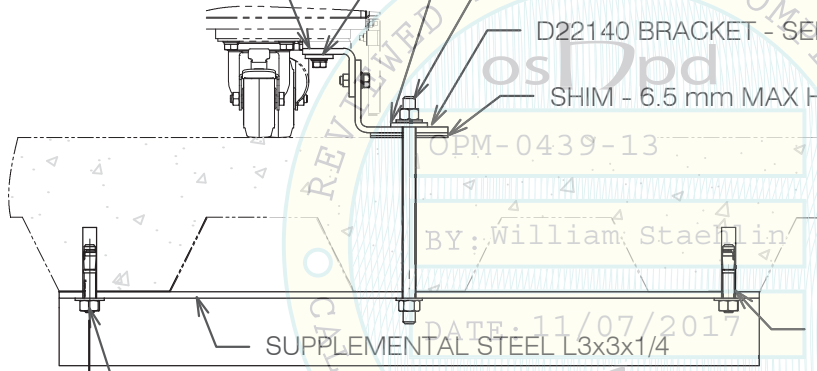
D22138 BRACKET
SEE PAGE
"IWPRO60 BRKT"

ADD (4) 304 STAINLESS STEEL PLATE WASHERS 110 mm x
30 mm x 6 mm WITH 14 mm HOLE (4 1/2" x 1" x 1/4" WITH
9/16" HOLE) FOR PCF PRO ONLY AND $S_{DS} > 1.0$

(4) 1/2" ASTM F593 CW1 304 STAINLESS STEEL ALL THREAD
ROD OR THRU BOLTS WITH MATCHING NUTS AND WASHERS.
DRILL 9/16" HOLES IN CONCRETE. FINGER TIGHTEN NUTS.

D22140 BRACKET - SEE PAGE "IWPRO60 BRKT"

SHIM - 6.5 mm MAX HEIGHT



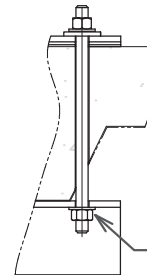
SUPPLEMENTAL STEEL L3x3x1/4

9/16" HOLES
IN L3 TYP.

1"
MIN.

NOTE 7 ON PAGE "GEN NOTES"

DETAIL ANCHOR CENTER OF LOW FLUTE
NOTES APPLY TO ALL SLAB CONFIGURATIONS



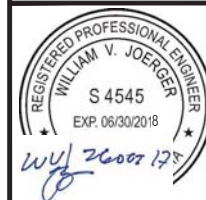
TACK
WELD NUT

DETAIL ANCHOR AT SIDE OF FLUTE

OPM-0439-13 STERIS IWPRO60 WASHERS / STERILIZERS
MISCELLANEOUS STEEL DRAWING 1

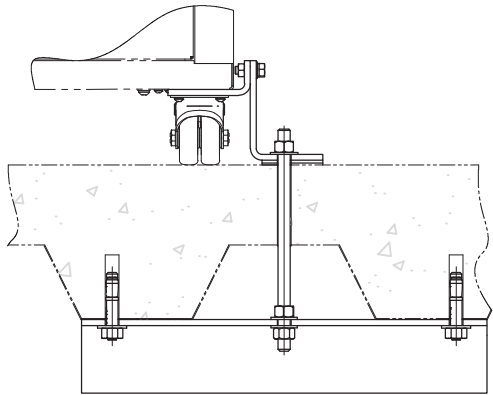


**A Division of Tomarco Contractor Specialties
International Seismic Application Technology**
1020 Crews Road, Suite Q, Matthews, NC 28105
704-841-4080 www.isatsb.com

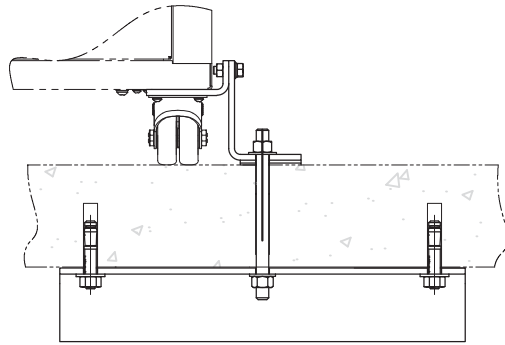


DRAWN BY: WVJ
DATE: 07/24/17
REVISED BY: WVJ
DATE: 10/26/17
REV NO: 2

SCALE **PAGE**
N.T.S. MISC. STEEL 1



DETAIL ANCHOR CENTER OF HIGH FLUTE



DETAIL AT SOLID CONCRETE SLAB

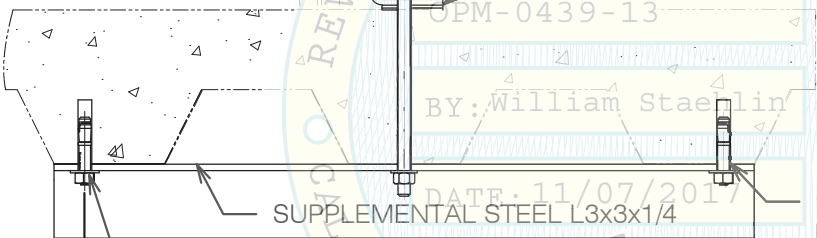
MOUNTING SCREWS HEX HD M8
ISO4017 SS WITH PLAIN
WASHER AND SPRING WASHER

D21886 BRACKET
SEE PAGE
"IWPCF BRKT"

(4) 1/2" ASTM F593 304 STAINLESS STEEL ALL THREAD ROD
OR THRU BOLTS WITH MATCHING NUTS AND WASHERS.
DRILL 9/16" HOLES IN CONCRETE. FINGER TIGHTEN NUTS.

D21887 BACK / D22148 RH FRONT / D22149 LH FRONT
BRACKETS - SEE PAGE "IWPCF BRKT"

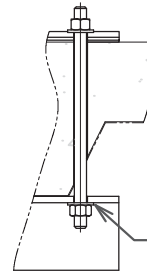
SHIM - 6.5 mm MAX HEIGHT



OPM-0439-13
BY: William Staehlin
DATE: 11/07/2017

SUPPLEMENTAL STEEL L3x3x1/4

9/16" HOLES
IN L3-TYP.



TACK
WELD NUT

1"
MIN.

NOTE 7 ON PAGE "GEN NOTES"

DETAIL ANCHOR CENTER OF LOW FLUTE
NOTES APPLY TO ALL SLAB CONFIGURATIONS

DETAIL ANCHOR AT SIDE OF FLUTE

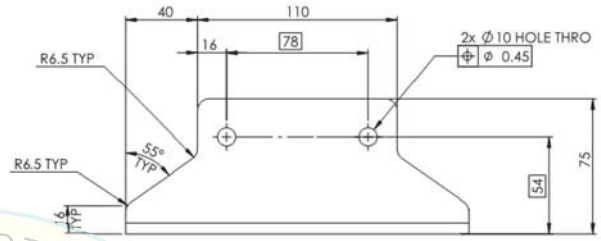
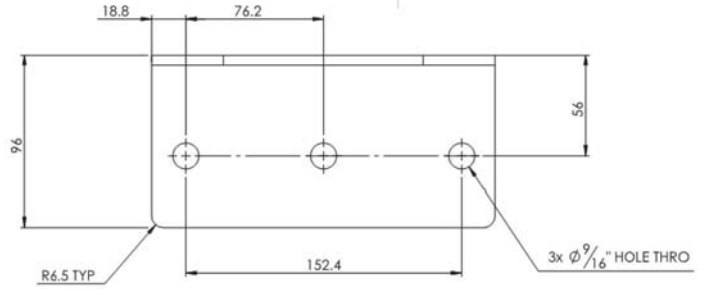
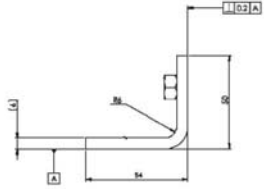
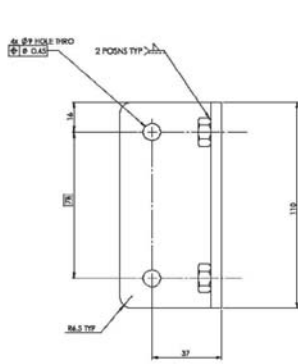
OPM-0439-13 STERIS IWPCF AND IWULTRAPL WASHERS / STERILIZERS
MISCELLANEOUS STEEL DRAWING 2



**A Division of Tomarco Contractor Specialties
International Seismic Application Technology**
1020 Crews Road, Suite Q, Matthews, NC 28105
704-841-4080 www.isatsb.com

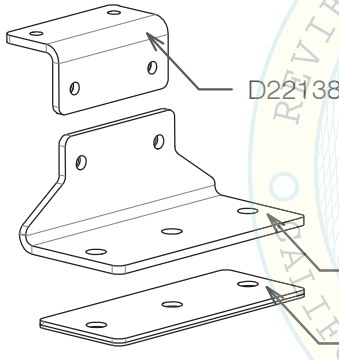
 <i>WVJ 26007 17</i>	DRAWN BY: WVJ DATE: 07/24/17
	REVISED BY: WVJ DATE: 10/26/17 REV NO: 2
	SCALE: N.T.S. PAGE: MISC. STEEL 2

OSHPD OPM-0439-13 DWG - 7



D22138 DETAIL

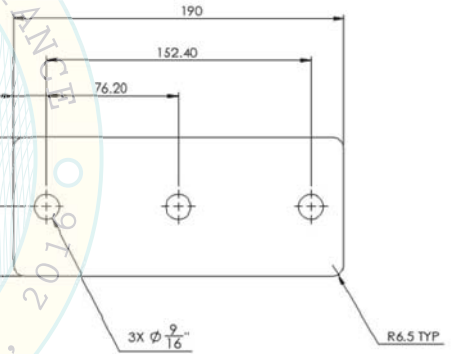
D22140 DETAIL



OPM-0439-13

BY: William Staehlin

DATE: 11/07/2017



D22142 SHIM DETAIL

(4) EACH 0.5 mm, 1 mm, 2 mm AND 3 mm

ALL MATERIAL THIS PAGE IS 6 mm 10600 (304-2B-6mm) STAINLESS STEEL

OPM-0439-13 STERIS IWPRO60 BRACKETS

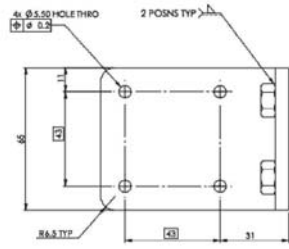


A Division of Tomarco Contractor Specialties
International Seismic Application Technology
1020 Crews Road, Suite Q, Matthews, NC 28105
704-841-4080 www.isatsb.com

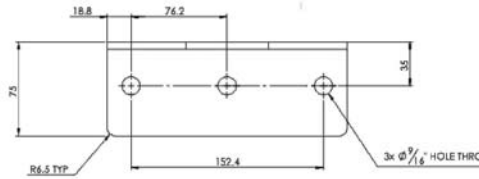


DRAWN BY: WVJ
DATE: 07/24/17
REVISED BY: WVJ
DATE: 10/26/17
REV NO: 2

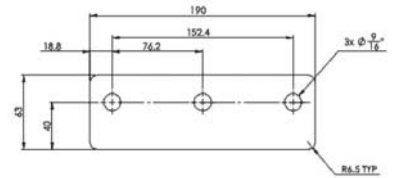
SCALE: N.T.S.
PAGE: IWPRO60 BRKT



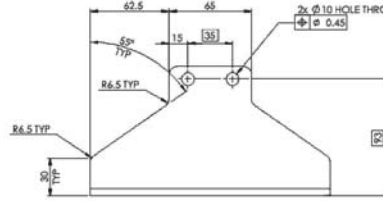
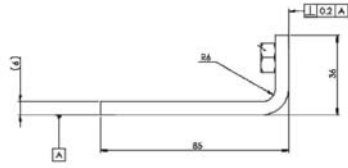
D21886 DETAIL



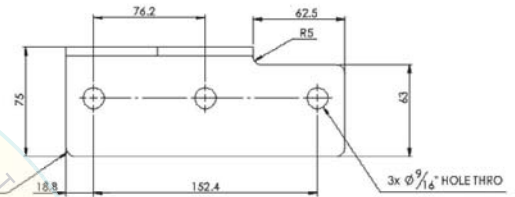
D21887 DETAIL



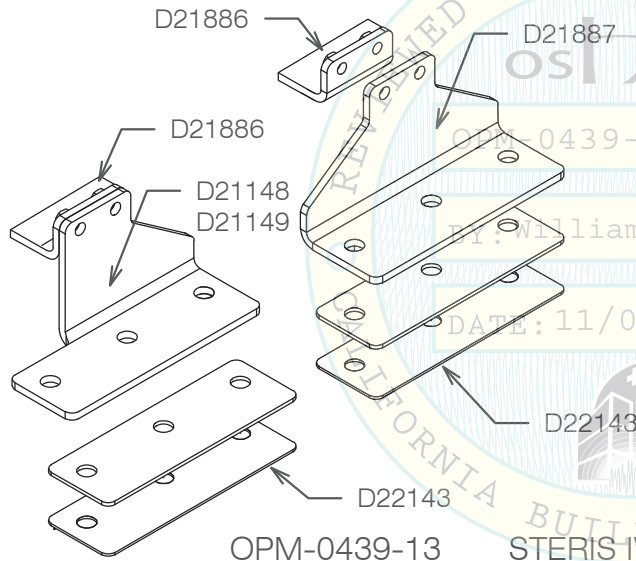
D22142 SHIM DETAIL
(4) EACH 0.5 mm, 1 mm,
2 mm AND 3 mm



ALL MATERIAL THIS PAGE IS 6 mm 10600
(304-2B-6mm) STAINLESS STEEL



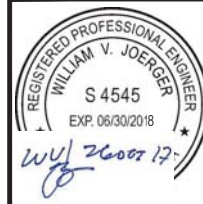
D22148 RH AND D22149 LH DETAIL



OPM-0439-13 STERIS IWPCF AND IWULTRAPL BRACKETS

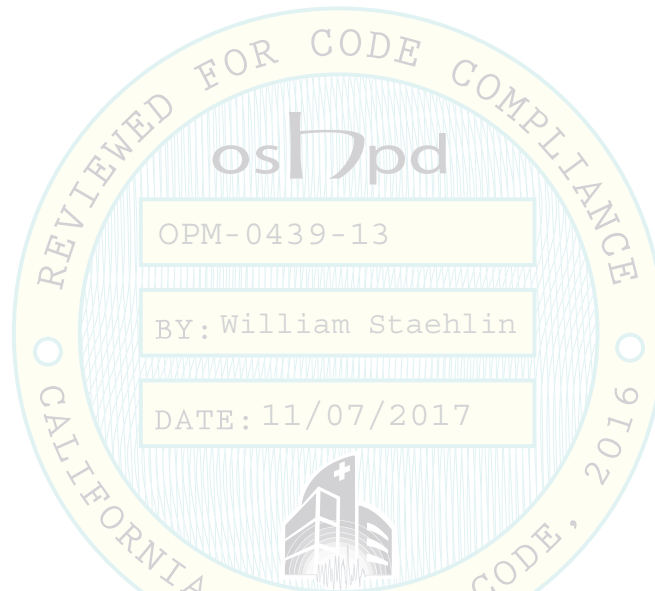


A Division of Tomarco Contractor Specialties
International Seismic Application Technology
1020 Crews Road, Suite Q, Matthews, NC 28105
704-841-4080 www.isatsb.com



DRAWN BY: WVJ DATE: 07/24/17	
REVISED BY: WVJ DATE: 10/26/17 REV NO: 2	
SCALE N.T.S.	PAGE IWPCF BRKT

STERIS WASHERS / STERILERS								
Equipment Data				Anchor Dimensions		Equipment Eccentricities		
Model Series	Max. Water Fill	Lid	Weight	Length (in)	Depth (in)	ex (in)	ey (in)	ez (in)
IWPCF	NO	---	314.12	37.4	19.45	0.00	0.00	22.55
IWPCF	YES	---	417.56	37.4	19.45	0.12	0.11	24.61
IWULTAPL	NO		149.12	32.32	13.94	0.00	0.00	25.34
IWULTAPL	YES		200.9	32.32	13.94	0.35	0.21	27.07
IWPRO60	NO	UP	973.87	51.97	25.59	0.00	0.00	27.46
IWPRO60	NO	DOWN	973.87	51.97	25.59	0.00	0.00	23.16
IWPRO60	YES	DOWN	1353.6	51.97	25.59	0.38	0.25	24.33



OPM-0439-13 STERIS WASHERS / STERILIZERS
EQUIPMENT DIMENSIONS AND ECCENTRICITIES



**A Division of Tomarco Contractor Specialties
International Seismic Application Technology**
1020 Crews Road, Suite Q, Matthews, NC 28105
704-841-4080 www.isatsb.com

 <i>WVJ 26007 17</i>	DRAWN BY: WVJ DATE: 07/24/17	
	REVISED BY: WVJ DATE: 10/26/17 REV NO: 2	
	SCALE N.T.S.	PAGE DIMENSIONS

OSHPD OPM-0439-13 DWG - 10

STERIS WASHERS / STERILIZERS							
Equipment Data				Seismic Design Forces at Grade		Seismic Design Forces at Elevated	
Model Series	Max. Water Fill	Lid	Weight	Vu (lbs.)	Tu (lbs.)	Vu (lbs.)	Tu (lbs.)
IWPCF	NO	---	314.12	66	150	353	584
IWPCF	YES	---	417.56	89	220	473	852
IWULTAPL	NO		149.12	31	113	168	428
IWULTAPL	YES		200.9	44	164	230	616
IWPRO60	NO	UP	973.87	205	418	1,096	1,650
IWPRO60	NO	DOWN	973.87	205	341	1,096	1,376
IWPRO60	YES	DOWN	1353.6	294	508	1,544	2,022

- WEIGHTS AND MOMENTS ARE FACTORED LOADS USING STRENGTH DESIGN AND INCLUDE THE FOLLOWING FACTORS: DL = 0.9, FpH AT GRADE = 1.13, FpH ELEVATED = 3.0 AND FpV = 0.5.
- TABULATED FORCES ARE PER ANCHOR AT STRENGTH DESIGN LEVEL AND INCLUDE A CONCRETE OVERSTRENGTH FACTOR $\Omega_0 = 1.5$.



OPM-0439-13 STERIS WASHERS / STERILIZERS ANCHORAGE FORCES



**A Division of Tomarco Contractor Specialties
International Seismic Application Technology**
1020 Crews Road, Suite Q, Matthews, NC 28105
704-841-4080 www.isatsb.com

	DRAWN BY: WVJ	
	DATE: 07/24/17	
	REVISED BY: WVJ	
		DATE: 10/26/17
		REV NO: 2
SCALE N.T.S.	PAGE FORCES	

OSHPD OPM-0439-13 DWG - 11