



**DEPARTMENT OF HEALTH CARE ACCESS AND INFORMATION
OFFICE OF STATEWIDE HOSPITAL PLANNING AND DEVELOPMENT**

**APPLICATION FOR HCAI PREAPPROVAL OF
MANUFACTURER'S CERTIFICATION (OPM)**

OFFICE USE ONLY

APPLICATION #: OPM-0498

HCAI Preapproval of Manufacturer's Certification (OPM)

Type: New Renewal/Update

Manufacturer Information

Manufacturer: Belimed, Inc

Manufacturer's Technical Representative: Jay Upchurch

Mailing Address: 8351 Palmetto Commerce Parkway, Suite 10, Ladson, SC 29456

Telephone: (843) 216-7424

Email: jay.upchurch@belimed.com

Product Information

Product Name: WD 750 WASHER/DISINFECTOR OPM-0498

Product Type: Washer/Disinfector

Product Model Number: WD 750

BY: Timothy Piland

General Description: Washer/Disinfector for the cleaning and disinfection of medical devices and accessories.

DATE: 04/02/2024

Applicant Information

Applicant Company Name: Belimed, Inc

Contact Person: Jay Upchurch

Mailing Address: 8351 Palmetto Commerce Parkway, Suite 10, Ladson, SC 29456

Telephone: (843) 216-7424

Email: jay.upchurch@belimed.com

Title: Product Manager

"A healthier California where all receive equitable, affordable, and quality health care"

STATE OF CALIFORNIA – HEALTH AND HUMAN SERVICES AGENCY





**DEPARTMENT OF HEALTH CARE ACCESS AND INFORMATION
OFFICE OF STATEWIDE HOSPITAL PLANNING AND DEVELOPMENT**

Registered Design Professional Preparing Engineering Recommendations

Company Name: ISAT SEISMIC BRACING
 Name: Deep Shah California License Number: S5867
 Mailing Address: 14848 Northam Street, La Mirada, CA 90638
 Telephone: (714) 523-1771 Email: dshah@isatsb.com

HCAI Special Seismic Certification Preapproval (OSP)

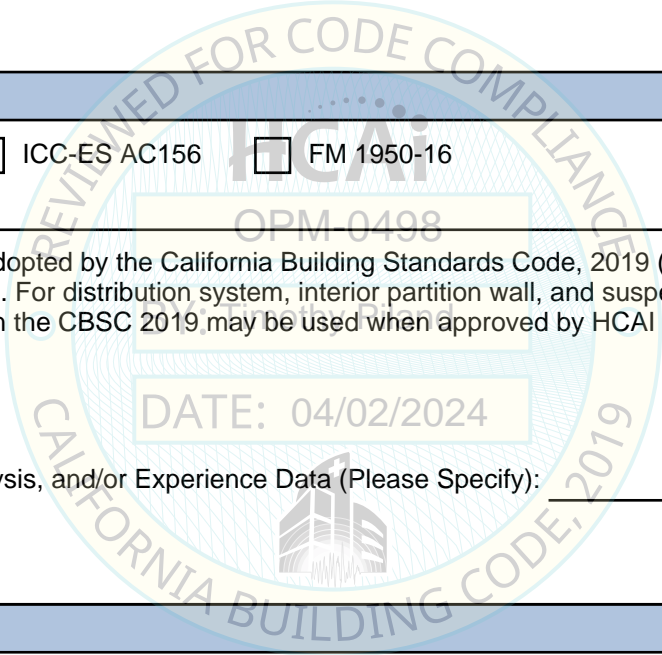
Special Seismic Certification is preapproved under OSP OSP Number: _____

Certification Method

Testing in accordance with: ICC-ES AC156 FM 1950-16
 Other(s) (Please Specify): _____

*Use of criteria other than those adopted by the California Building Standards Code, 2019 (CBSC 2019) for component supports and attachments are not permitted. For distribution system, interior partition wall, and suspended ceiling seismic bracings, test criteria other than those adopted in the CBSC 2019 may be used when approved by HCAI prior to testing.

Analysis
 Experience Data
 Combination of Testing, Analysis, and/or Experience Data (Please Specify): _____



HCAI Approval

Date: 4/2/2024
 Name: Timothy Piland Title: Senior Structural Engineer
 Condition of Approval (if applicable): _____

"A healthier California where all receive equitable, affordable, and quality health care"

STATE OF CALIFORNIA – HEALTH AND HUMAN SERVICES AGENCY





Submittal Documents

OSHPD OPM-0498

OPM-0498

ATTACHMENT OPM DRAWINGS WD750 STERILIZERS

BELIMED



ISAT
14848 Northam Street,
La Mirada, CA 90638
877-999-4728

FILE NO.: CLT-0618-045

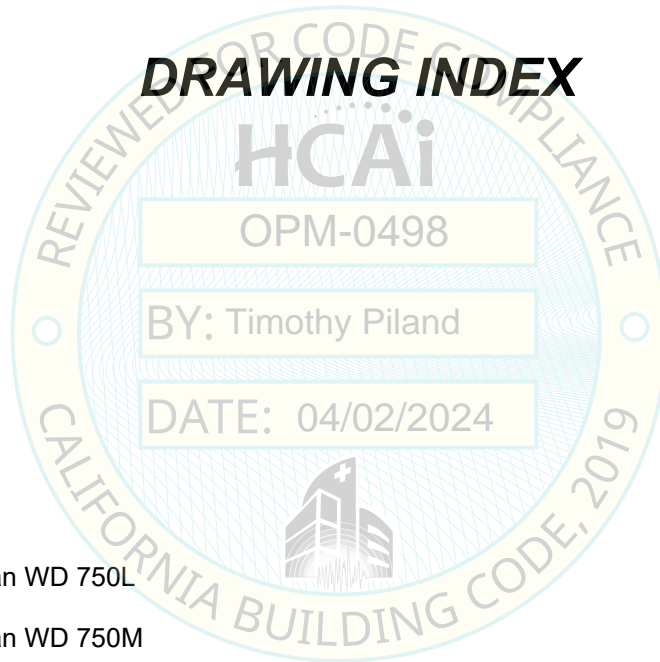
03/22/2024

REV 2



OSHPD OPM-0498

DRAWING INDEX



INDEX

Cover Page	p i
Index Page	p ii
General Notes	p 1
Attachment Notes	p 2
Attachment Layout Plan WD 750L	p 3
Attachment Layout Plan WD 750M	p 4
Attachment Layout Plan WD 750S	p 5
Equipment Anchorage at Grade	p 6
Equipment Anchorage at Elevated Slabs	p 7
Dimensions and Attachment Forces	p 8
Brackets	p 9

FILE NO.: CLT-0618-045

“Empowered by Experience”

Index Rev 2

OSHPD OPM-0498

MANUFACTURE: BELIMED
EQUIPMENT TYPE: STERILIZER

GENERAL NOTES

1. THIS OSHPD PREAPPROVAL OF MANUFACTURER'S CERTIFICATION (OPM) IS BASED ON THE CBC 2019. THE DEMAND (DESIGN FORCES) FOR USE WITH THIS OPM SHALL BE BASED ON THE CBC 2019.
2. SEISMIC CRITERIA USED: $S_{DS} = 2.50$ $I_p = 1.5$ $a_p = 1.0$ $R_p = 1.5$ (OTHER EQUIPMENT) FOR $z/h = 0.0$ $F_pH = 1.13$ AND FOR $z/h \leq 1.0$ $F_pH = 3.00$ AND $F_{pV} = 0.50$.
3. SUPPORT AND ATTACHMENT FORCES ARE DETERMINED USING ASCE 7-16 CHAPTER 13 "SEISMIC DESIGN REQUIREMENTS FOR NONSTRUCTURAL COMPONENTS". AN OVERSTRENGTH FACTOR $\Omega_0 = 1.5$ IS USED FOR CONCRETE ANCHORAGE FORCES PER CBC 2019 SECTION 1617A.1.23. LOADS SHOWN ARE STRENGTH DESIGN LOADS PER CBC 2019 SECTION 1605A.2.
4. THIS PREAPPROVAL COVERS ONLY THE SUPPORTS AND ATTACHMENTS OF THE EQUIPMENT TO THE STRUCTURE.
5. STEEL MATERIALS: PLATE 304 STAINLESS STEEL BY MANUFACTURER ($F_y = 30.0$ KSI PER ASTM A240 TYPE 304), ALL THREAD ROD ASTM F593 CW1 304 STAINLESS STEEL FOR BOLTS AT ELEVATED FLOORS, ANGLE ASTM A35 ($F_u = 58$ KSI) HOT DIPPED GALVANIZED.
6. CONCRETE SLABS:
 - a. FOR ELEVATED SOLID CONCRETE SLABS: 6" MINIMUM THICKNESS OF NORMAL WEIGHT CONCRETE WITH 3000 PSI MINIMUM STRENGTH.
 - b. METAL DECK: 3" DEEP COMPOSITE STEEL DECK, 20 GAGE MINIMUM, 4 1/2" MINIMUM BOTTOM FLUTE WIDTH AND MINIMUM FLUTE SPACING OF 12", WITH 3 1/4" SAND LIGHT WEIGHT OR NORMAL WEIGHT CONCRETE COVER AT 3000 PSI MINIMUM STRENGTH.
 - c. FOR SLAB ON GRADE: 6" THICKNESS NORMAL WEIGHT CONCRETE AT 3000 PSI MINIMUM STRENGTH.
7. POST-INSTALLED CONCRETE ANCHORS: HILTI KWIK BOLT TZ2 (ESR-4266) STAINLESS STEEL 5/8" DIAMETER x 4" EFFECTIVE EMBEDMENT. DRILL 11/16" DIAMETER x 4 3/4" MINIMUM DEEP HOLE; CLEAN HOLE PER MANUFACTURER'S INSTRUCTIONS. FOR ANCHORS INTO THE SOFFIT OF THE METAL DECK USE HILTI KWIK BOLT TZ2 (ESR-4266) 1/2" DIAMETER x 4" HOLE DEPTH, 3 1/4" EFFECTIVE EMBEDMENT WITH 1" MAXIMUM OFFSET FROM THE CENTER OF THE METAL DECK FLUTE. BOTH ARE SUPPLIED BY INSTALLATION CONTRACTOR.
8. EXERCISE DUE CARE WHEN DRILLING POST-INSTALLED ANCHORS TO AVOID DAMAGING CONCRETE REINFORCEMENT OR TENDONS.

DATE: 04/02/2024

OPM-0498 BELIMED WD750 STERILIZER GENERAL NOTES



ISAT
TOTAL SUPPORT
Innovation • Engineering • BIM • Fabrication
A Division of Tomarco Contractor Specialties
International Seismic Application Technology
14848 Northam Street, La Mirada, CA 90638
877-999-4728 www.isatsb.com

	DRAWN BY: WVJ DATE: 06/26/18			
	REVISED BY: ML DATE: 03/20/24 REV NO: 2			
	<table style="width: 100%; border: none;"> <tr> <td style="border: none;">SCALE</td> <td style="border: none;">PAGE</td> </tr> <tr> <td style="border: none;">N.T.S.</td> <td style="border: none;">GEN NOTES</td> </tr> </table>	SCALE	PAGE	N.T.S.
SCALE	PAGE			
N.T.S.	GEN NOTES			

OSHPD OPM-0498

MANUFACTURE: BELIMED
EQUIPMENT TYPE: STERILIZER

ATTACHMENT NOTES:

1. THIS OSHPD PREAPPROVAL OF MANUFACTURER'S CERTIFICATION (OPM) IS BASED ON THE CBC 2019. THE DEMAND (DESIGN FORCES) FOR USE WITH THIS OPM SHALL BE BASED ON THE CBC 2019.
2. PERIODIC SPECIAL INSPECTION PER CBC 2019 SECTION 1705A AND TABLE 1705A.3 INCLUDING VERIFICATION OF ANCHOR TYPE, ANCHOR DIMENSIONS, CONCRETE TYPE, CONCRETE COMPRESSIVE STRENGTH, ANCHOR SPACING, EDGE DISTANCES, CONCRETE MEMBER THICKNESS, HOLE DIMENSIONS, ANCHOR EMBEDMENT AND ADHERENCE TO THE MANUFACTURER'S PRINTED INSTALLATION INSTRUCTIONS. IN ADDITION, FOLLOW THE PROVISIONS OF THE 2019 CALIFORNIA BUILDING CODE SECTION 1910A.5.5 TORQUE CONTROLLED POST-INSTALLED ANCHORS - TEST USING A CALIBRATED TORQUE WRENCH; 60 FOOT-POUNDS TORQUE FOR 5/8" ANCHORS AND 40 FOOT-POUNDS FOR 1/2" ANCHORS SHALL BE ACHIEVED WITHIN ONE-HALF TURN OF THE NUT. TEST 50% OF THE ANCHORS FOR EACH PIECE OF EQUIPMENT. IF ANY ANCHOR FAILS TEST ALL ANCHORS. REPORT OF TEST RESULTS ARE TO BE SUBMITTED TO THE ENFORCEMENT AGENCY. THE SEOR SHALL PROVIDE REMEDIAL ANCHORAGE DETAILS IN THE EVENT THAT AN ANCHOR FAILS TO MEET THE TEST REQUIREMENTS. FOR THROUGH BOLTS MARK THE NUT LOCATION AT SNUG TIGHT CONDITION. INSPECTOR IS TO VERIFY 3/4 TURN.
3. STRENGTH DESIGN WAS USED FOR ANCHOR FORCE CALCULATIONS INCLUDING ϕ PER ACI 318-14 WHERE REQUIRED FOR ATTACHMENT TO CONCRETE.
4. PROVIDE FOR FULL THREAD ENGAGEMENT OF THE NUT AND WASHER.

RESPONSIBILITIES OF THE STRUCTURAL ENGINEER OF RECORD

1. CONFIRM THE MATERIAL PROPERTIES AND THICKNESS OF THE CONCRETE SLAB TO WHICH THE EQUIPMENT IS ATTACHED MEETS THE REQUIREMENTS OF THIS OPM.
2. PROVIDE A PLAN FOR INSPECTION OF SUPPORTS AND ATTACHMENTS AND VERIFY ITS IMPLEMENTATION.
3. CONFIRM THE SPECIFIED MINIMUM CONCRETE EDGE DISTANCES ARE MAINTAINED BASED ON THE ACTUAL EQUIPMENT LOCATION. VERIFY THAT EXISTING OR NEW ANCHORS ARE AN ADEQUATE DISTANCE FROM THIS UNIT'S ATTACHMENT.
4. VERIFY THAT THE EXISTING STRUCTURE IS ADEQUATE FOR THE IMPOSED DEAD, LATERAL AND TENSION FORCES SHOWN IN ADDITION TO ALL OTHER LOADS.
5. VERIFY THAT THE INSTALLATION IS IN CONFORMANCE WITH CBC 2019 AND WITH THE OPM-0498 DETAILS INCLUDING MATERIALS AND DIMENSIONS OF THE SUPPORT WHERE THE ATTACHMENTS ARE MADE AGREE WITH THE INFORMATION SHOWN.
6. VERIFY THAT THE PROJECT SPECIFIC S_{DS} AND z/h VALUES RESULT IN SEISMIC FORCES (E_h AND E_v) DO NOT EXCEED THE VALUES SHOWN IN THESE DETAILS.

OPM-0498 BELIMED WD750 STERILIZER ATTACHMENT NOTES



Innovation • Engineering • BIM • Fabrication

A Division of Tomarco Contractor Specialties

International Seismic Application Technology

14848 Northam Street, La Mirada, CA 90638

877-999-4728 www.isatsb.com

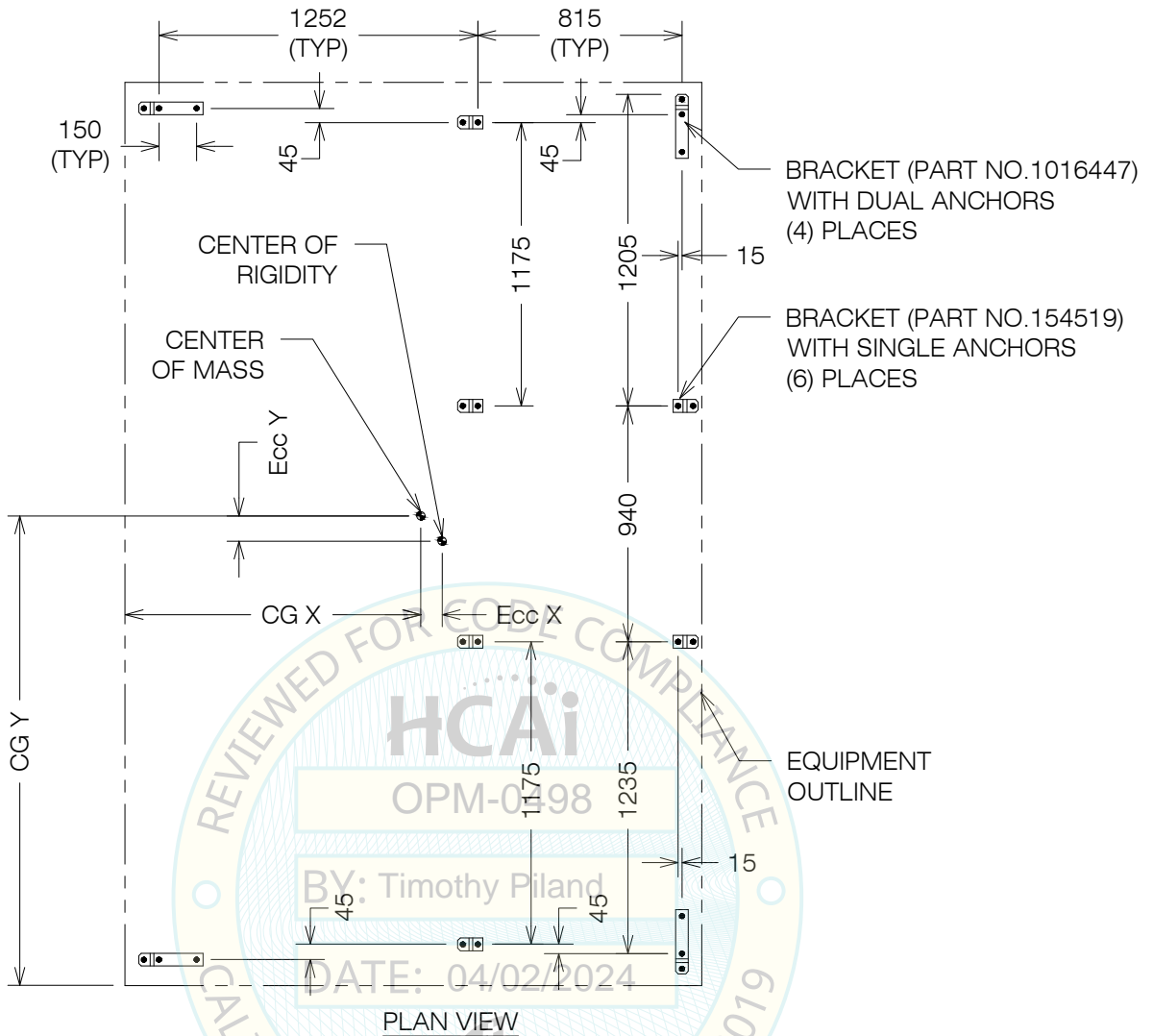


DRAWN BY: WVJ
DATE: 06/26/18

REVISED BY: ML
DATE: 03/20/24
REV NO: 2

SCALE N.T.S.	PAGE ATTACHMENT
------------------------	---------------------------

#230859 OSHPD OPM - 0498 DWG - 2



PLAN VIEW

ANCHORS ARE BY INSTALLATION CONTRACTOR. SEE PAGE "GEN NOTES" NOTE 7 FOR ANCHORS AT GRADE AND PAGE "ELEVATED" FOR ANCHORS AT ELEVATED SLABS. SEE PAGE "BRACKETS" FOR BRACKET DIMENSIONS. ALL DIMENSIONS ARE IN MM.

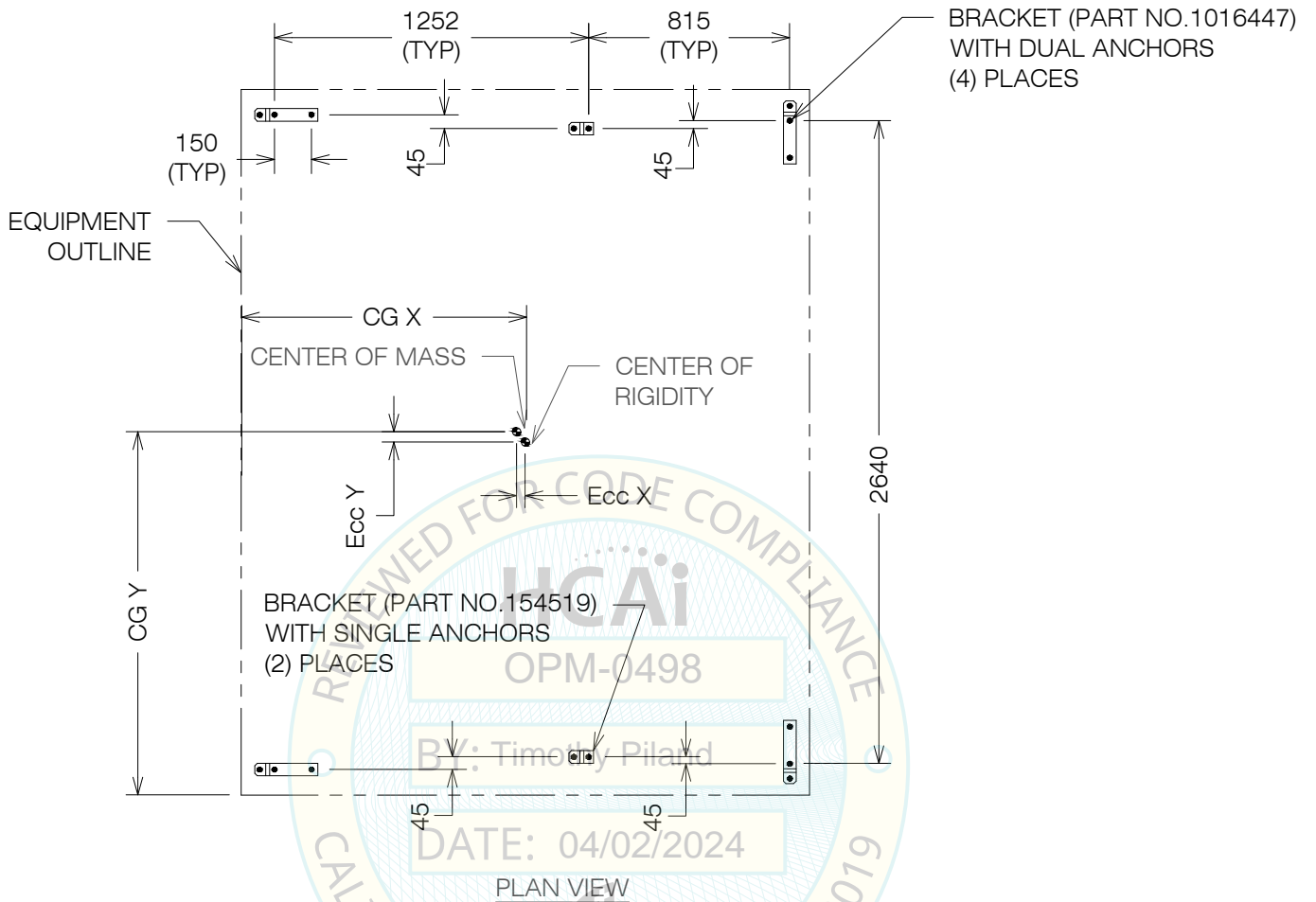
OPM-0498 BELIMED WD750L ATTACHMENT PLAN



ISAT
TOTAL SUPPORT
Innovation • Engineering • BIM • Fabrication
A Division of Tomarco Contractor Specialties
International Seismic Application Technology
14848 Northam Street, La Mirada, CA 90638
877-999-4728 www.isatsb.com

	DRAWN BY: WVJ DATE: 06/26/18	
	REVISED BY: ML DATE: 03/20/24 REV NO: 2	
	<table border="1" style="width: 100%; border-collapse: collapse;"> <tr> <td style="text-align: center;">SCALE N.T.S.</td> <td style="text-align: center;">PAGE WD750L PLAN</td> </tr> </table>	SCALE N.T.S.
SCALE N.T.S.	PAGE WD750L PLAN	

#230859 OSHPD OPM - 0498 DWG - 3



ANCHORS ARE BY INSTALLATION CONTRACTOR. SEE PAGE "GEN NOTES" NOTE 7 FOR ANCHORS AT GRADE AND PAGE "ELEVATED" FOR ANCHORS AT ELEVATED SLABS. SEE PAGE "BRACKETS" FOR BRACKET DIMENSIONS. ALL DIMENSIONS ARE IN MM.

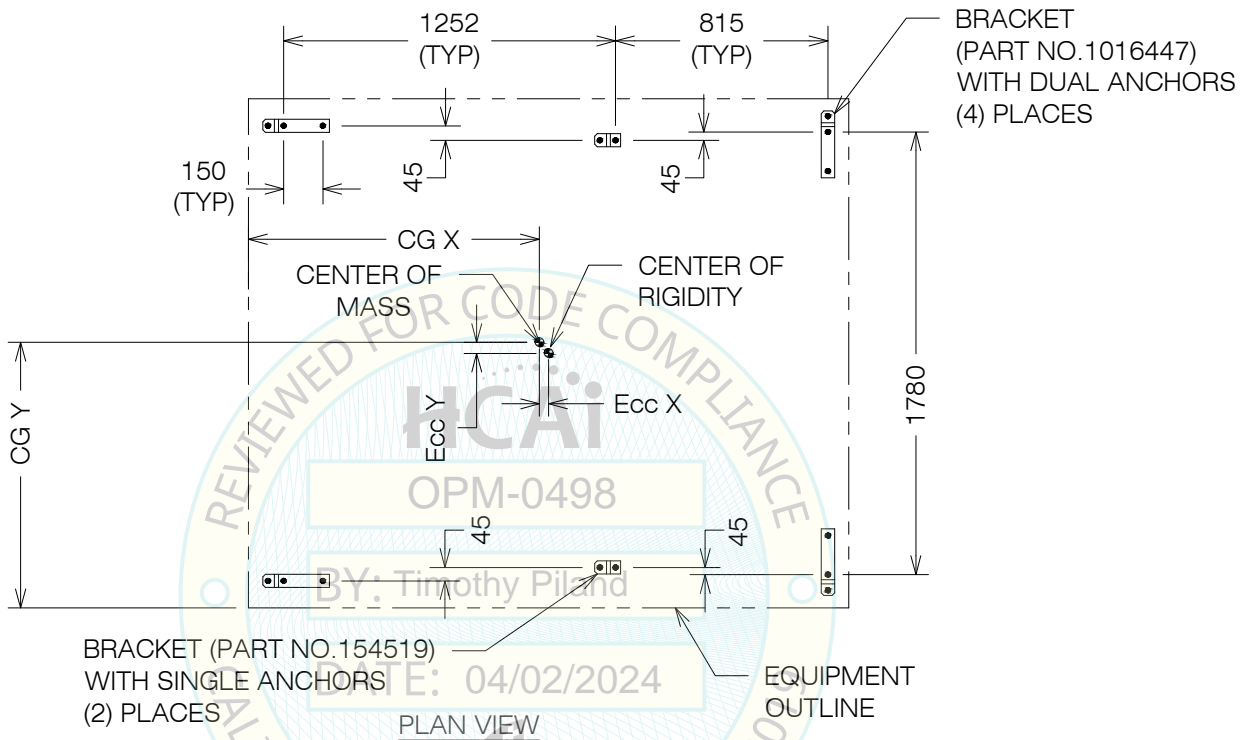
OPM-0498 BELIMED WD750M ATTACHMENT PLAN



ISAT
TOTAL SUPPORT
Innovation • Engineering • BIM • Fabrication
A Division of Tomarco Contractor Specialties
International Seismic Application Technology
14848 Northam Street, La Mirada, CA 90638
877-999-4728 www.isatsb.com

	DRAWN BY: WVJ DATE: 06/26/18	
	REVISED BY: ML DATE: 03/20/24 REV NO: 2	
	<table border="1" style="width: 100%; border-collapse: collapse;"> <tr> <td style="text-align: center;">SCALE N.T.S.</td> <td style="text-align: center;">PAGE WD750M PLAN</td> </tr> </table>	SCALE N.T.S.
SCALE N.T.S.	PAGE WD750M PLAN	

#230859 OSHPD OPM - 0498 DWG - 4



ANCHORS ARE BY INSTALLATION CONTRACTOR. SEE PAGE "GEN NOTES" NOTE 7 FOR ANCHORS AT GRADE AND PAGE "ELEVATED" FOR ANCHORS AT ELEVATED SLABS. SEE PAGE "BRACKETS" FOR BRACKET DIMENSIONS. ALL DIMENSIONS ARE IN MM.

OPM-0498 BELIMED WD750S ATTACHMENT PLAN



ISAT
TOTAL SUPPORT
Innovation • Engineering • BIM • Fabrication
A Division of Tomarco Contractor Specialties
International Seismic Application Technology
14848 Northam Street, La Mirada, CA 90638
877-999-4728 www.isatsb.com

	DRAWN BY: WVJ DATE: 06/26/18	
	REVISED BY: ML DATE: 03/20/24 REV NO: 2	
	SCALE N.T.S.	PAGE WD750S PLAN

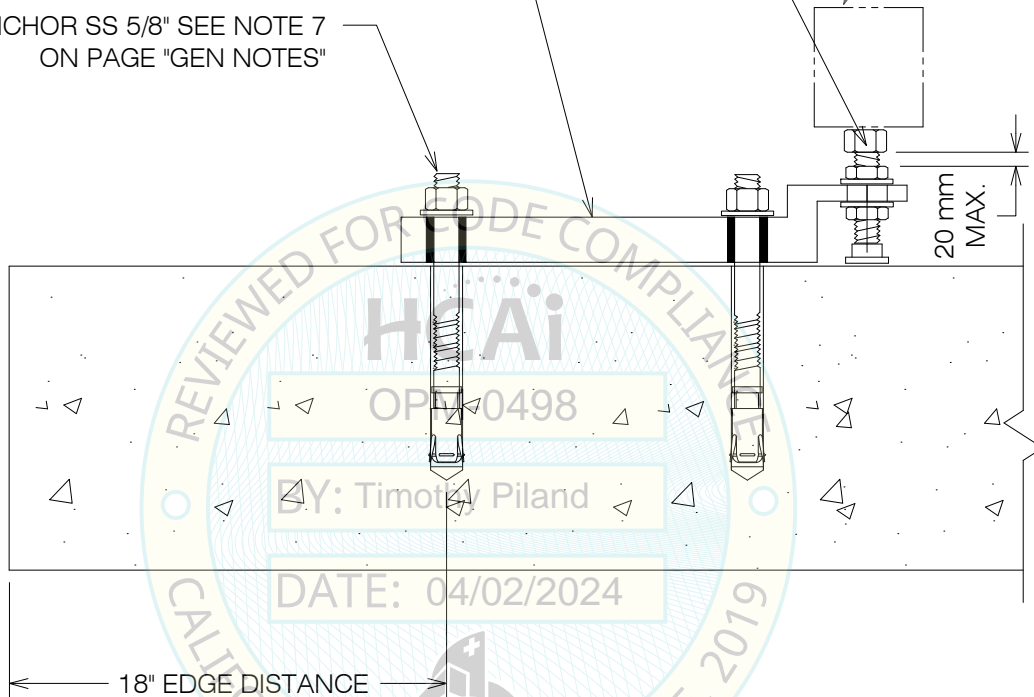
#230859 OSHPD OPM - 0498 DWG - 5

20 mm ADJUSTABLE LEG
F593 CW1 SS
FULLY THREADED INSIDE UNIT

BRACKET BY BELIMED WHERE SHOWN
SEE LAYOUT PLANS FOR PART NUMBER
SEE PAGE "BRACKET" FOR DIMENSIONS
ASTM A240 GRADE 304 STAINLESS STEEL

HILTI ANCHOR SS 5/8" SEE NOTE 7
ON PAGE "GEN NOTES"

EQUIPMENT FRAME



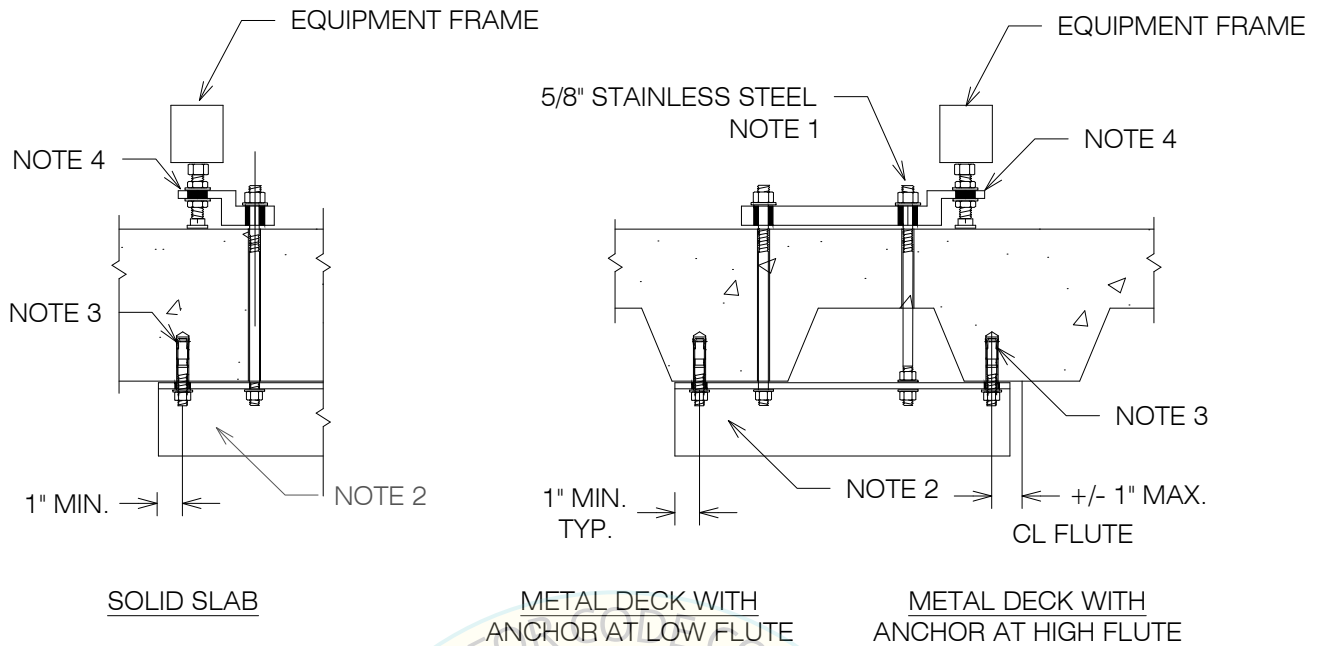
OPM-0498 BELIMED WD750L, WD750M, WD750S
STERILIZER EQUIPMENT ANCHORAGE AT SLAB-ON-GRADE



ISAT
TOTAL SUPPORT
Innovation • Engineering • BIM • Fabrication
A Division of Tomarco Contractor Specialties
International Seismic Application Technology
14848 Northam Street, La Mirada, CA 90638
877-999-4728 www.isatsb.com

	DRAWN BY: WVJ DATE: 06/26/18	
	REVISED BY: ML DATE: 03/20/24 REV NO: 2	
	SCALE N.T.S.	PAGE GRADE

#230859 OSHPD OPM - 0498 DWG - 6



NOTES:

1. DRILL 11/16" HOLE IN THE CONCRETE SLAB TO RECEIVE THE 5/8" ASTM F593 CW1 304 STAINLESS STEEL RODS WITH MATCHING WASHERS AND NUTS. BOLT SHALL BE TORQUED BY 3/4 TURN OF THE NUTS AFTER SNUG TIGHT (THE SNUG TIGHT CONDITION DEFINED AS THE TIGHTNESS REQUIRED TO BRING THE CONNECTED PLIES INTO FIRM CONTACT) CONDITION IS ACHIEVED, UNLESS NOTED OTHERWISE. THROUGH BOLTS IN CONCRETE SHALL RECEIVE SPECIAL INSPECTION AND TESTING (THROUGH BOLTS WITH STEEL TO STEEL CONNECTION IN TENSION DO NOT REQUIRE TENSION TESTING) IN ACCORDANCE WITH REQUIREMENTS FOR POST-INSTALLED ANCHORS.
2. SUPPLEMENTAL ANGLE SHALL BE L3x3x1/4 ASTM A36. DRILL 11/16" HOLES IN ANGLE FOR EQUIPMENT BOLTS. FOR LOCATIONS WHERE A TOP NUT CANNOT BE INSTALLED, DRILL AND TAP THE ANGLE TO RECEIVE THE 5/8" EQUIPMENT ANCHORAGE BOLT.
3. ANCHOR INTO BOTTOM OF SLAB SHALL BE HILTI KWIK BOLT (TZ2 1/2", SEE NOTE 7 ON PAGE "GEN NOTES".
4. BRACKET BY BELIMED WHERE SHOWN SEE LAYOUT PLANS FOR PART NUMBER SEE PAGE "BRACKET" FOR DIMENSIONS ASTM A240 GRADE 304 STAINLESS STEEL. ADJUSTABLE LEG BY BELIMED SHALL BE 20 mm F593 CW1 WITH 20 mm MAXIMUM BETWEEN NUTS.

OPM-0498 BELIMED WD750L, WD750M, WD750S
STERILIZER ATTACHMENT DETAILS AT ELEVATED SLABS



ISAT
TOTAL SUPPORT
Innovation • Engineering • BIM • Fabrication
A Division of Tomarco Contractor Specialties
International Seismic Application Technology
14848 Northam Street, La Mirada, CA 90638
877-999-4728 www.isatsb.com

	DRAWN BY: WVJ DATE: 06/26/18	
	REVISED BY: ML DATE: 03/20/24 REV NO: 2	
	SCALE N.T.S.	PAGE ELEVATED

#230859 OSHPD OPM - 0498 DWG - 7

BELIMED WD750 STERILIZERS DIMENSIONS AND WEIGHTS									
Sterilizer		WD750L-1ST	WD750M-1ST	WD750S-1ST	WD750L-2ST	WD750M-2ST	WD750S-2ST		
Operating Wt	kg [lbs]	2794 [1270]	2440 [1109]	2095 [952]	2794 [1270]	2440 [1109]	2095 [952]		
CG X1	mm [in]	1178 [46]	1154 [45]	1094 [43]	1178 [46]	1154 [45]	1094 [43]		
Ecc X1	mm [in]	2794 [110]	95.5 [4]	35.2 [1]	87.5 [3]	95.5 [4]	35.2 [1]		
CG Y1	mm [in]	1872 [74]	1470 [58]	979 [39]	1872 [74]	1470 [58]	1021 [40]		
Ecc Y1	mm [in]	202 [8]	170 [7]	134 [5]	202 [8]	170 [7]	134 [5]		
CG Z1	mm [in]	1154 [45]	1164 [46]	1195 [47]	1154 [45]	1164 [46]	1195 [47]		

NOTES:

1. CG Z IS THE VERTICAL CENTER OF GRAVITY MEASURED FROM THE FLOOR. CG X AND CG Y ARE THE CENTER OF GRAVITY MEASURED FROM THE CORNER OF THE EQUIPMENT. Ecc X AND Ecc Y IS THE DISTANCE FROM THE CENTER OF MASS TO THE CENTER OF RIGIDITY OF THE BOLT GROUP.

Model	Anchor Type See Page "GEN NOTES" - Note 7	Attachment at Grade				Attachment at Elevated Slab				
		Forces at Grade				Anchor Type Note 3	Forces at Elevated Slab			
		Tu		Vu			Tu		Vu	
		LBF	kN	LBF	kN		LBF	kN	LBF	kN
WD750L-1ST	HILTI KB TZ2 SS 0.625" x 4" EFF. EMBED.	0	0	1236	5.5	0.625" SS ROD	3619	16.1	3867	17.2
WD750M-1ST	HILTI KB TZ2 SS 0.625" x 4" EFF. EMBED.	67	0.3	1169	5.2	0.625" SS ROD	3619	16.1	3867	17.2
WD750S-1ST	HILTI KB TZ2 SS 0.625" x 4" EFF. EMBED.	832	3.7	1034	4.6	0.625" SS ROD	3619	16.1	3867	17.2
WD750L-2ST	HILTI KB TZ2 SS 0.625" x 4" EFF. EMBED.	0	0	1236	5.5	0.625" SS ROD	3619	16.1	3867	17.2
WD750M-2ST	HILTI KB TZ2 SS 0.625" x 4" EFF. EMBED.	67	0.3	1169	5.2	0.625" SS ROD	3619	16.1	3867	17.2
WD750S-2ST	HILTI KB TZ2 SS 0.625" x 4" EFF. EMBED.	832	3.7	1034	4.6	0.625" SS ROD	3619	16.1	3867	17.2

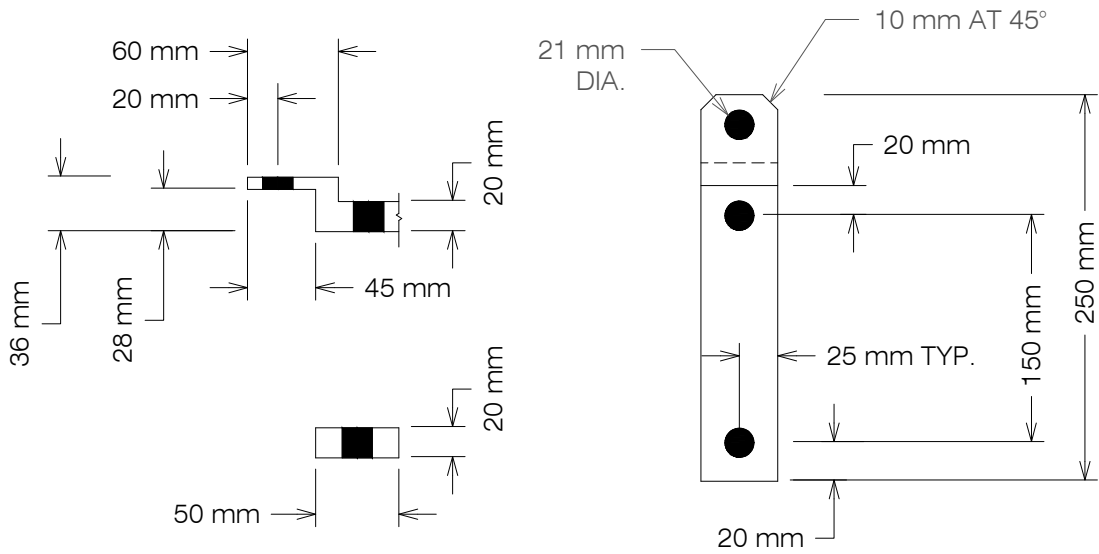
1. Tu AND Vu VALUES INCLUDE AN OVERSTRENGTH FACTOR OF 1.5 PER NOTE 3 OF GENERAL NOTES.
2. FOR INTERACTION CHECKS THE CALCULATED ANCHOR CAPACITY HAS BEEN MULTIPLIED BY 0.75 TO ACCOUNT FOR THE CONCRETE ANCHORAGE CAPACITY REDUCTION FROM ACI 318-14 SECTION 17.2.3.4.4.
3. SEE NOTE 6 ON PAGE "GEN NOTES".

OPM-0498 BELIMED WD750L, WD750M, WD750S
STERILIZER DIMENSIONS AND ANCHORAGE FORCES

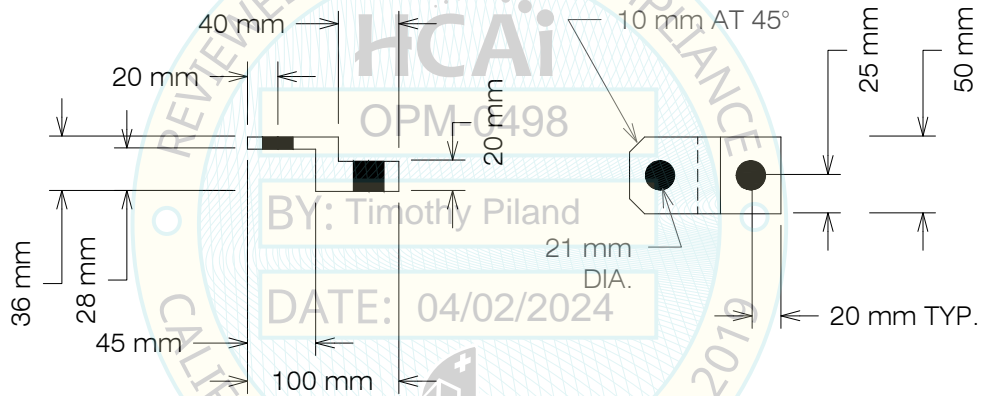


ISAT
TOTAL SUPPORT
Innovation • Engineering • BIM • Fabrication
A Division of Tomarco Contractor Specialties
International Seismic Application Technology
14848 Northam Street, La Mirada, CA 90638
877-999-4728 www.isatsb.com

	DRAWN BY: WVJ	
	DATE: 06/26/18	
	REVISED BY: ML	
DATE: 03/20/24		REV NO: 2
SCALE N.T.S.	PAGE DIMENSIONS	



PART NO. 1016447 304 SS STAINLESS STEEL
(EN 10088-2:2005); FY=30 KSI MINIMUM)



PART NO. 154519 304 SS STAINLESS STEEL
(EN 10088-2:2005); FY=30 KSI MINIMUM)

OPM-0498 BELIMED WD750 MODEL BRACKETS



TOTAL SUPPORT
Innovation • Engineering • BIM • Fabrication
 A Division of Tomarco Contractor Specialties
International Seismic Application Technology
 14848 Northam Street, La Mirada, CA 90638
 877-999-4728 www.isatsb.com

	DRAWN BY: WVJ DATE: 06/26/18	
	REVISED BY: ML DATE: 03/20/24 REV NO: 2	
	SCALE N.T.S.	PAGE BRACKETS