



OFFICE OF STATEWIDE HEALTH PLANNING AND DEVELOPMENT
FACILITIES DEVELOPMENT DIVISION

APPLICATION FOR OSHPD PREAPPROVAL OF
MANUFACTURER'S CERTIFICATION (OPM)

OFFICE USE ONLY

APPLICATION #: OPM-0500

OSHPD Preapproval of Manufacturer's Certification (OPM)

Type: [ ] New [X] Renewal/Update

Manufacturer Information

Manufacturer: Steris Corporation

Manufacturer's Technical Representative: Zachary Miday

Mailing Address: 5960 Heisley Road, Mentor, OH 44060

Telephone: (440) 354-2600

Email: Zachary\_Miday@steris.com

Product Information

Product Name: V-PRO S2 STERILIZER

Product Type: Other Electrical & Mechanical Components

Product Model Number: V-PRO S2

General Description: Sterilizer used to sanitize medical instruments, gowns etc

Applicant Information

Applicant Company Name: EASE LLC.

Contact Person: Tiffany Tonn

Mailing Address: 1515 FAIRVIEW AVE, STE 205, MISSOULA, MT 59801

Telephone: (406) 541-3273

Email: tiffany@easeco.com

Title:

\*Access to Safe, Quality Healthcare Environments that Meet California's Diverse and Dynamic Needs\*

STATE OF CALIFORNIA- HEALTH AND HUMAN SERVICES AGENCY





# OFFICE OF STATEWIDE HEALTH PLANNING AND DEVELOPMENT FACILITIES DEVELOPMENT DIVISION

## Registered Design Professional Preparing Engineering Recommendations

Company Name: EASE LLC

Name: Jonathan Roberson

California License Number: S4197

Mailing Address: 5877 Pine Ave., Suite 210, Chino Hills, CA 91709

Telephone: (909) 606-7622

Email: jon@easeco.com

## OSHDP Special Seismic Certification Preapproval (OSP)

Special Seismic Certification is preapproved under OSP

OSP Number: \_\_\_\_\_

## Certification Method

Testing in accordance with:  ICC-ES AC156  FM 1950-16

Other(s) (Please Specify): \_\_\_\_\_

\*Use of criteria other than those adopted by the California Building Standards Code, 2019 (CBSC 2019) for component supports and attachments are not permitted. For distribution system, interior partition wall, and suspended ceiling seismic bracings, test criteria other than those adopted in the CBSC 2019 may be used when approved by OSHDP prior to testing.

Analysis

Experience Data

Combination of Testing, Analysis, and/or Experience Data (Please Specify): \_\_\_\_\_

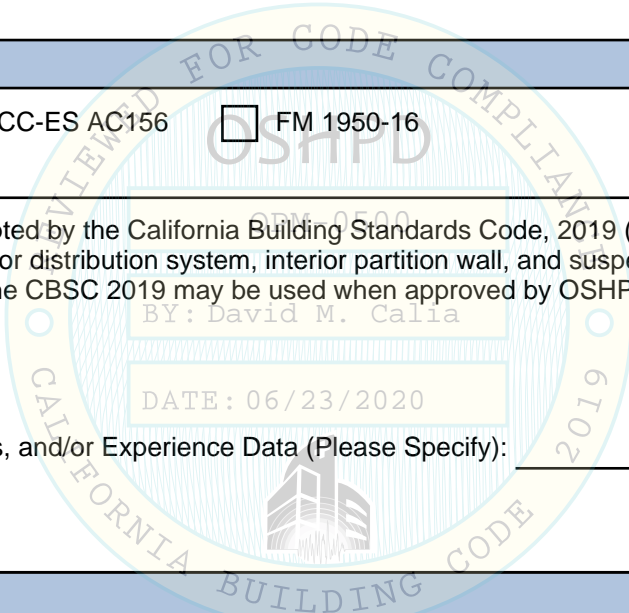
## OSHDP Approval

Date: 6/23/2020

Name: David Calia

Title: Senior Structural Engineer

Condition of Approval (if applicable): \_\_\_\_\_





**EQUIPMENT ANCHORAGE  
& SEISMIC ENGINEERING**

5877 Pine Ave, Ste. 210  
Chino Hills, CA. 91709  
Phn: (909) 606-7622

Office of Statewide Health Planning and Development  
**PREAPPROVAL OF MANUFACTURER'S CERTIFICATION**  
**OPM-0500**

**THIS PREAPPROVAL CONFORMS TO THE 2019 CALIFORNIA BUILDING CODE**

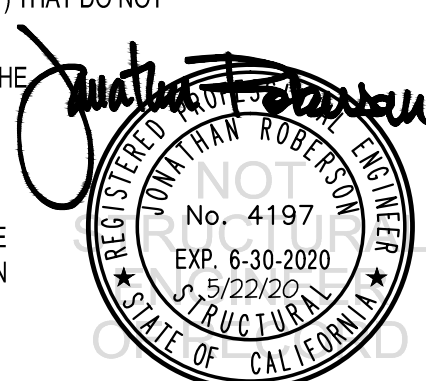
MANUFACTURER: **STERIS CORPORATION**  
EQUIPMENT NAME: **V-PRO S2 STERILIZER**

Sheet: 1 of 8  
Date: 5/22/20

**GENERAL NOTES**

1. THIS OSHPD PREAPPROVAL OF MANUFACTURER'S CERTIFICATION (OPM) IS BASED ON THE 2019 CBC. THE DEMANDS (DESIGN FORCES) FOR USE WITH THIS OPM SHALL BE BASED ON THE 2019 CBC
2. THIS DOCUMENT MAY ONLY BE USED WITH THE EXPRESS WRITTEN CONSENT OF THE MANUFACTURER LISTED ABOVE FOR THE SPECIFIC PROJECT SITE AND INSTALLATION LOCATION. THIS DOCUMENT IS INVALID WITHOUT SUCH CONSENT.
3. THIS PREAPPROVAL CONFORMS TO THE 2019 CALIFORNIA BUILDING CODE WHERE  $S_{ds}$  IS NOT GREATER THAN 1.70 & 2.20. SEE DETAIL FOR APPLICABILITY
4. FORCES PER ASCE 7-16 SECTION 13.3.1, EQUATIONS 13.3-1, 13.3-2 & 13.3-3,  
WHERE  $S_{ds} = 2.20$ ,  $a_p = 1.0$ ,  $I_p = 1.5$ ,  $R_p = 1.5$ ,  $z/h = 0$  AT CONCRETE SLAB. SEE FOLLOWING SHEETS FOR  $\Omega$ .  
WHERE  $S_{ds} = 1.70$ ,  $a_p = 1.0$ ,  $I_p = 1.5$ ,  $R_p = 1.5$ ,  $z/h \leq 1$  AT CONCRETE SLAB ON METAL DECK.  
SEE FOLLOWING SHEETS FOR  $\Omega$ .
5. THIS PREAPPROVAL COVERS ONLY THE SUPPORTS AND ATTACHMENTS OF THE EQUIPMENT TO THE STRUCTURE.
6. ALL DESIGN FORCES SHOWN ON THE DRAWINGS ARE FACTORED LOADS THAT SHALL BE USED FOR STRENGTH DESIGN.
7. CONCRETE SLAB ON METAL DECK DETAIL VALID FOR DEMANDS SHOWN AT ANY ELEVATION IN THE BUILDING. (i.e.  $z/h \leq 1$ )
8. CONCRETE SLAB DETAIL VALID FOR DEMANDS SHOWN AT ANY ELEVATION AT OR BELOW GRADE. (i.e.  $z/h = 0$ )
9. **RESPONSIBILITIES OF THE STRUCTURAL ENGINEER OF RECORD OF THE BUILDING**
  - A. PROVIDE SUPPORTING STRUCTURE TO SUPPORT WEIGHTS AND FORCES SHOWN IN ADDITION TO ALL OTHER LOADS.
  - B. VERIFY THAT THE INSTALLATION IS IN CONFORMANCE WITH THE 2019 CBC AND WITH THE DETAILS, MATERIAL AND GAGE OF THE UNIT WHERE ATTACHMENTS ARE MADE AGREE WITH THE INFORMATION SHOWN ON THE PREAPPROVAL DOCUMENTS.
  - C. VERIFY THAT PROJECT SPECIFIC VALUES OF  $S_{ds}$  &  $z/h$  RESULT IN SEISMIC FORCES ( $E_h$ ,  $E_v$ ) THAT DO NOT EXCEED THE VALUES ON THE DETAILS.
  - D. VERIFY THAT THE CONCRETE SLAB TO WHICH THE EQUIPMENT IS ANCHORED MEETS THE REQUIREMENTS OF THE APPLICABLE ICC ESR REPORT AND THIS OPM.
  - E. VERIFY THAT THE ANCHORS ARE AN ADEQUATE DISTANCE FROM ANY SLAB EDGES OR OPENINGS (SEE TYPICAL DETAIL ON SHEET 2).
  - F. VERIFY THAT ALL NEW OR EXISTING ANCHORS ARE AN ADEQUATE DISTANCE FROM THE UNIT ATTACHMENTS AND CHECK FOR INTERACTION WHERE OTHER ANCHORS ARE WITHIN 18" OR  $6h_{ef}$  FROM THIS UNIT'S ANCHORS.

OPM-0500  
BY: David M. Calia  
DATE: 06/23/2020



## STERIS CORPORATION

### V-PRO S2 STERILIZER

DES. **J. ROBERSON**

JOB NO. **14-2007**

DATE **5/22/20**

SHEET

**2**

OF **8** SHEETS

**10. EXPANSION ANCHORS:**

A. ATTACHMENT IS TO BE MADE WITH THE ANCHORS LISTED BELOW AND INSTALLED AS DESCRIBED IN THE CORRESPONDING ICC REPORT.

Anchor Diameter	Concrete Type	Min. f'c (psi)	Anchor Type	ICC Report No.	Min. Embed.	Min. Spacing	Min. Edge Dist.	Min. Conc. Thickness	Torque Test	Direct Tension Test
3/8"	Sand Light Weight	3000	Hilti Kwik Bolt TZ	ESR-1917	2"	6.75"	12"	See Detail "A"	25 FT-LB	N/A
3/8"	Normal Weight	3000	Hilti Kwik Bolt TZ	ESR-1917	2"	8"	12"	4"	25 FT-LB	1515 lb

B. THIS PREAPPROVAL ALLOWS FOR UP TO A MAXIMUM OF 2 ADJACENT CONCRETE SLAB EDGES, 12" AWAY MINIMUM (i.e. - CORNER). SEE ADJACENT DETAIL FOR ADDITIONAL MINIMUM ALLOWABLE CONCRETE EDGE DISTANCES.

C. TESTING OF EXPANSION ANCHORS PER 2019 CBC, 1910A.5: TESTING SHALL BE DONE IN THE PRESENCE OF THE SPECIAL INSPECTOR AND A REPORT OF THE TEST RESULTS SHALL BE SUBMITTED TO OSHPD

(i) AFTER AT LEAST 24 HOURS HAVE ELAPSED SINCE INSTALLATION, DIRECT PULL TENSION TEST OR TORQUE TEST AT LEAST 50% OF THE ANCHORS.

(ii) ACCEPTANCE CRITERIA:

- DIRECT TENSION TEST: THE ANCHOR SHOULD HAVE NO OBSERVABLE MOVEMENT AT THE TEST LOAD. A PRACTICAL WAY TO DETERMINE OBSERVABLE MOVEMENT IS THAT THE WASHER BECOMES LOOSE.
- TORQUE TEST: THE APPLICABLE TORQUE MUST BE ACHIEVED WITHIN THE FOLLOWING LIMITS: WEDGE TYPE : 1/2 TURN OF THE NUT

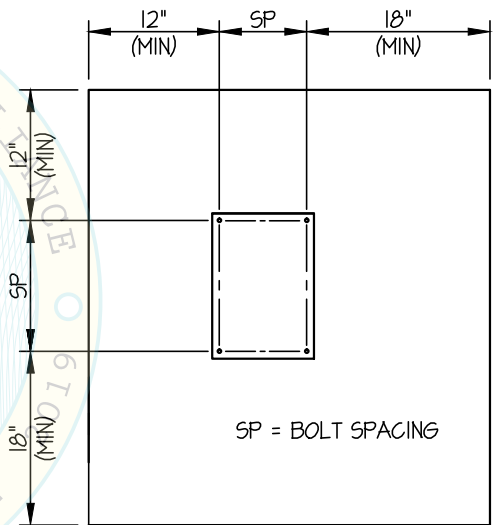
(iii) IF ANY ANCHOR FAILS, TEST ALL ANCHORS.

D. AVOID DAMAGING EXISTING STEEL REINFORCING IN CONCRETE SLAB WHEN INSTALLING CONCRETE EXPANSION ANCHORS.

E. PROVIDE FOR FULL THREAD ENGAGEMENT OF NUT & WASHER.

**11. BOLTS THROUGH CONCRETE ON METAL DECK**

- A. BOLTS SHALL BE TORQUED BY 3/4 TURN OF THE NUTS AFTER THE SNUG TIGHT (THE SNUG-TIGHT CONDITION IS DEFINED AS THE TIGHTNESS REQUIRED TO BRING THE CONNECTED PLIES INTO FIRM CONTACT) CONDITION IS ACHIEVED, UNLESS OTHERWISE NOTED.
- B. THROUGH BOLT HOLES SHALL BE 1/16" LARGER THAN BOLT SIZE (HOLE SIZE = BOLT SIZE + 1/16) FOR CONCRETE.
- C. THROUGH-BOLTS IN CONCRETE SHALL RECEIVE SPECIAL INSPECTION AND TESTING (THROUGH BOLTS WITH STEEL TO STEEL CONNECTION IN TENSION DO NOT REQUIRE TENSION TESTING) IN ACCORDANCE WITH REQUIREMENTS FOR POST-INSTALLED ANCHORS.



TYPICAL CONCRETE EDGE DETAIL



## STERIS CORPORATION

### V-PRO S2 STERILIZER

DES. J. ROBERSON

JOB NO. 14-2007

DATE 5/22/20

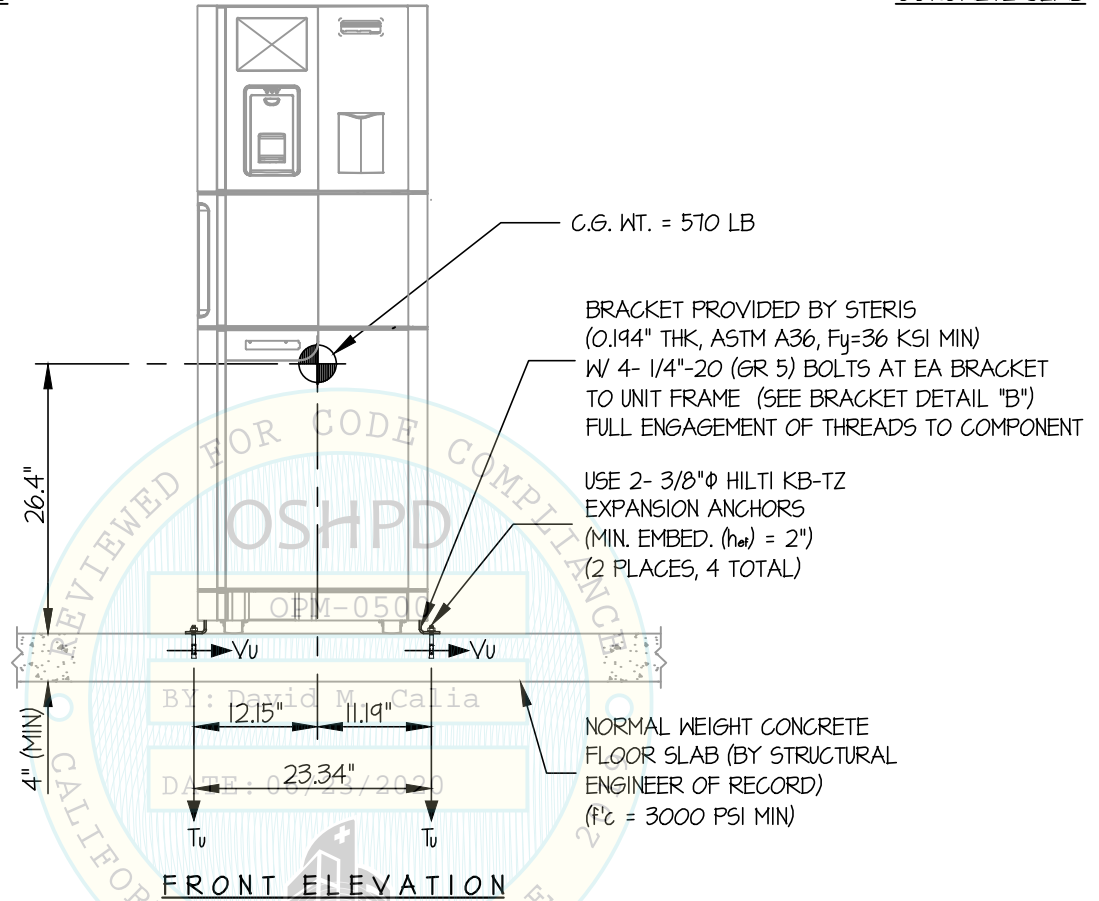
SHEET

3

OF 8 SHEETS

SEISMIC SUPPORTS & ATTACHMENTS

CONCRETE SLAB



T<sub>u</sub> = 816 LB/BOLT (MAX)  
V<sub>u</sub> = 346 LB/BOLT (MAX)  
(VALUES INCLUDE Ω<sub>d</sub>)

**NOTES:**

- FORCES ARE DETERMINED PER 2019 CALIFORNIA BUILDING CODE AND ASCE 7-16 STRENGTH DESIGN IS USED. (S<sub>ds</sub> = 2.20, α<sub>p</sub> = 1.0, I<sub>p</sub> = 1.5, R<sub>p</sub> = 1.5, Ω<sub>e</sub> = 1.5, z/h = 0)

HORIZONTAL FORCE (E<sub>h</sub>) = 0.99 W<sub>p</sub>

HORIZONTAL FORCE (E<sub>mh</sub>) = 1.49 W<sub>p</sub> (FOR CONCRETE ANCHORAGE)

VERTICAL FORCE (E<sub>v</sub>) = 0.44 W<sub>p</sub>

- CENTER OF GRAVITY (C.G.) AND WEIGHT ARE THE GOVERNING PARAMETERS FOR DESIGN. THIS PREAPPROVAL ENCOMPASSES ALL WEIGHTS UP TO THE MAXIMUM WEIGHT SHOWN.
- STRUCTURAL ENGINEER OF RECORD FOR THE BUILDING SHALL PROVIDE SUPPORT STRUCTURE DESIGNED TO SUPPORT WEIGHTS AND FORCES SHOWN IN COMBINATION WITH ALL OTHER LOADS THAT MAY BE PRESENT.
- SEE GENERAL NOTES: SHEETS 1 AND 2



### STERIS CORPORATION

### V-PRO S2 STERILIZER

DES. **J. ROBERSON**

JOB NO. **14-2007**

DATE **5/22/20**

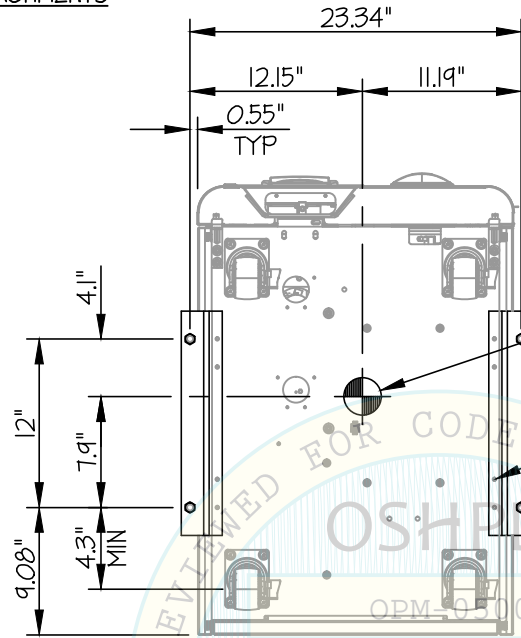
SHEET

**4**

OF **8** SHEETS

SEISMIC SUPPORTS & ATTACHMENTS

CONCRETE SLAB



BRACKET PROVIDED BY STERIS  
(0.194" THK, ASTM A36, F<sub>y</sub>=36 KSI MIN)  
W 4- 1/4"-20 (GR 5) BOLTS AT EA BRACKET  
TO UNIT FRAME (SEE BRACKET DETAIL "B")  
FULL ENGAGEMENT OF THREADS TO COMPONENT

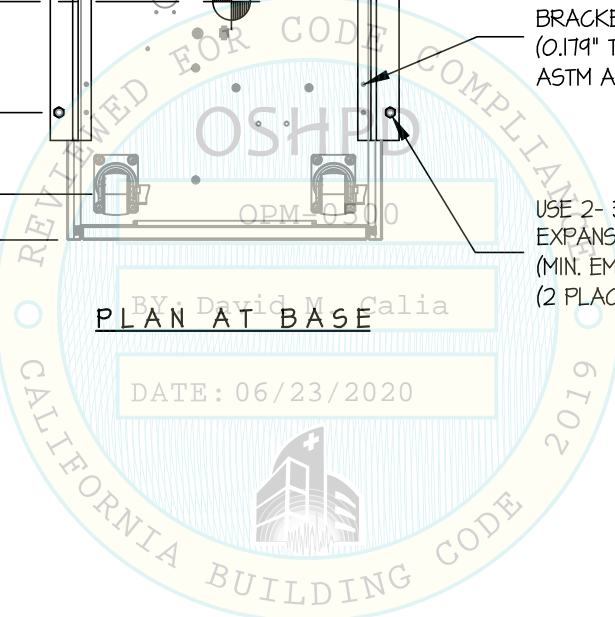
C.G. WT. = 570 LB  
( $\bar{Y}$  = 26.4")

UNIT MATERIAL AT  
BRACKET CONNECTION  
(0.179" THK FRAME  
ASTM A1011, F<sub>y</sub>=30 KSI)

USE 2- 3/8"Ø HILTI KB-TZ  
EXPANSION ANCHORS  
(MIN. EMBED. (h<sub>ef</sub>) = 2")  
(2 PLACES, 4 TOTAL)

By: David M. Calia

DATE: 06/23/2020



## STERIS CORPORATION

### V-PRO S2 STERILIZER

DES. **J. ROBERSON**

JOB NO. **14-2007**

DATE **5/22/20**

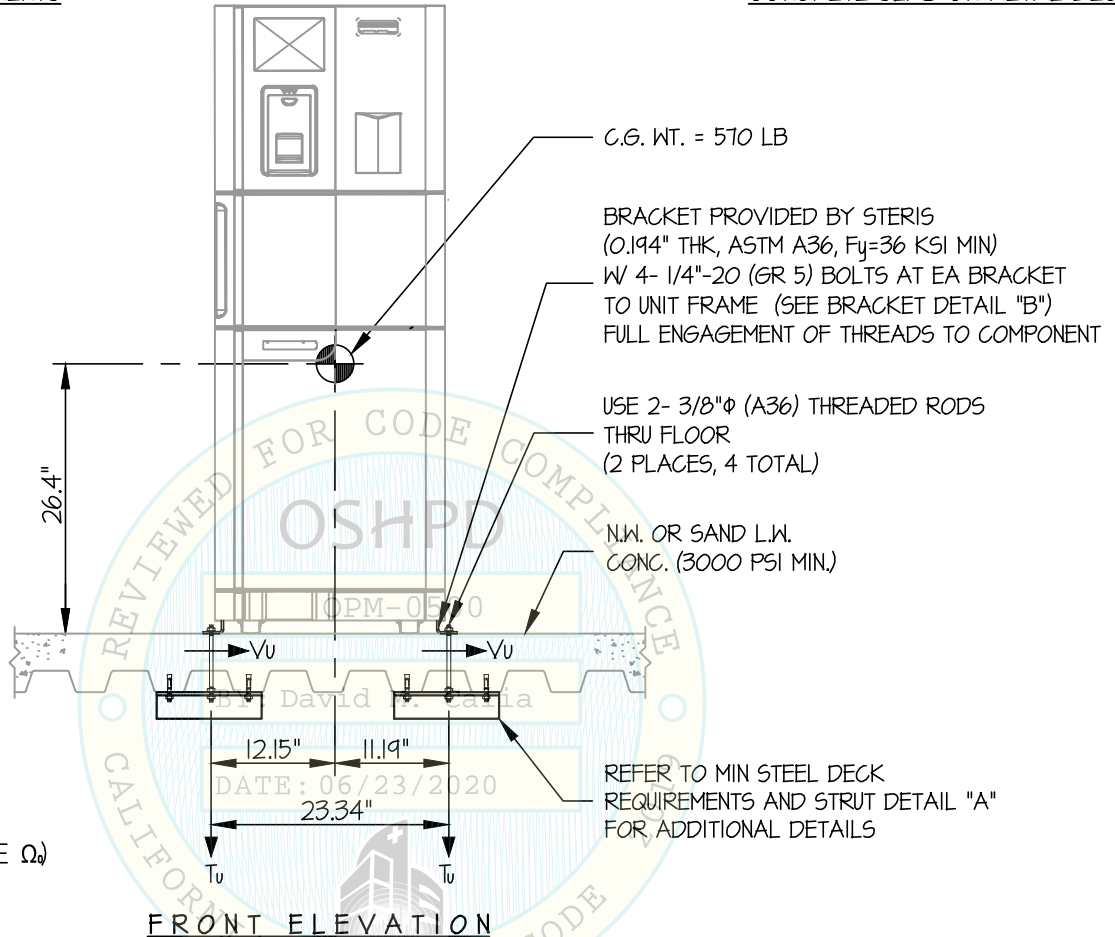
SHEET

**5**

OF **8** SHEETS

SEISMIC SUPPORTS & ATTACHMENTS

CONCRETE SLAB ON METAL DECK



$T_u = 1131 \text{ LB/BOLT (MAX)}$   
 $V_u = 474 \text{ LB/BOLT (MAX)}$   
(VALUES DO NOT INCLUDE  $\Omega$ )

FRONT ELEVATION

**NOTES:**

1. **FORCES ARE DETERMINED PER 2019 CALIFORNIA BUILDING CODE AND ASCE 7-16.**

STRENGTH DESIGN IS USED. ( $S_{ds} = 1.70$ ,  $a_p = 1.0$ ,  $I_p = 1.5$ ,  $R_p = 1.5$ ,  $\Omega_o = 1.5$ ,  $z/h \leq 1$ )

HORIZONTAL FORCE ( $E_h$ ) =  $2.04 W_p$

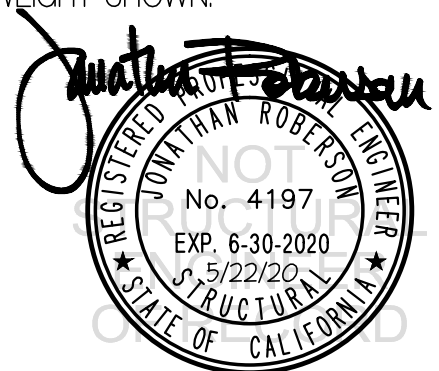
HORIZONTAL FORCE ( $E_{mh}$ ) =  $3.06 W_p$  (FOR CONCRETE ANCHORAGE)

VERTICAL FORCE ( $E_v$ ) =  $0.34 W_p$

2. CENTER OF GRAVITY (C.G.) AND WEIGHT ARE THE GOVERNING PARAMETERS FOR DESIGN. THIS PREAPPROVAL ENCOMPASSES ALL WEIGHTS UP TO THE MAXIMUM WEIGHT SHOWN.

3. STRUCTURAL ENGINEER OF RECORD FOR THE BUILDING SHALL PROVIDE SUPPORT STRUCTURE DESIGNED TO SUPPORT WEIGHTS AND FORCES SHOWN IN COMBINATION WITH ALL OTHER LOADS THAT MAY BE PRESENT.

4. SEE GENERAL NOTES: SHEETS 1 AND 2



## STERIS CORPORATION

### V-PRO S2 STERILIZER

DES. **J. ROBERSON**

JOB NO. **14-2007**

DATE **5/22/20**

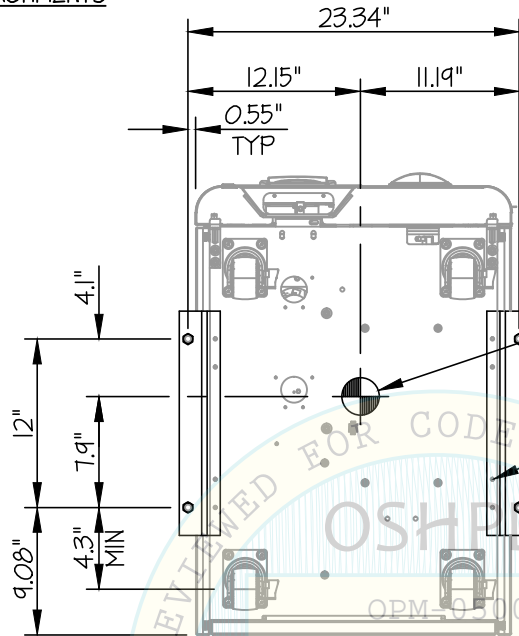
SHEET

**6**

OF **8** SHEETS

SEISMIC SUPPORTS & ATTACHMENTS

CONCRETE SLAB ON METAL DECK



BRACKET PROVIDED BY STERIS  
(0.194" THK, ASTM A36, Fy=36 KSI MIN)  
W/ 4- 1/4"-20 (GR 5) BOLTS AT EA BRACKET  
TO UNIT FRAME (SEE BRACKET DETAIL "B")  
FULL ENGAGEMENT OF THREADS TO COMPONENT

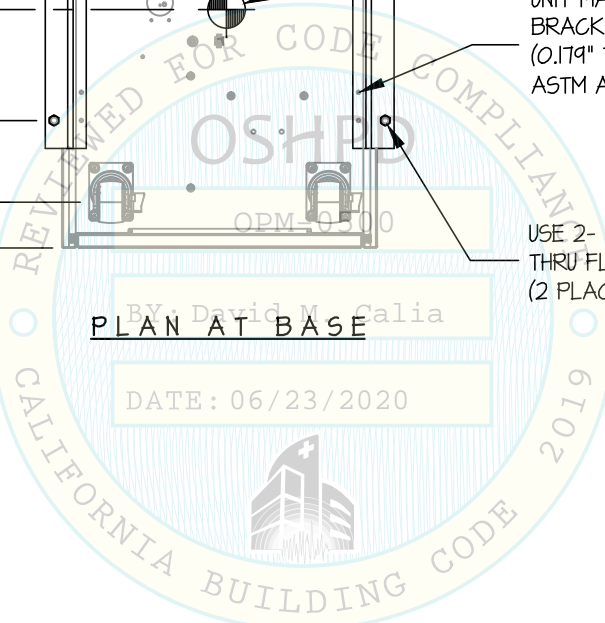
C.G. WT. = 570 LB  
( $\bar{Y}$  = 26.4")

UNIT MATERIAL AT  
BRACKET CONNECTION  
(0.179" THK FRAME  
ASTM A1011, Fy=30 KSI)

USE 2- 3/8"φ (A36) THREADED RODS  
THRU FLOOR  
(2 PLACES, 4 TOTAL)

By: David M. Calia

DATE: 06/23/2020





### STERIS CORPORATION

### V-PRO S2 STERILIZER

DES. J. ROBERSON

JOB NO. 14-2007

DATE 5/22/20

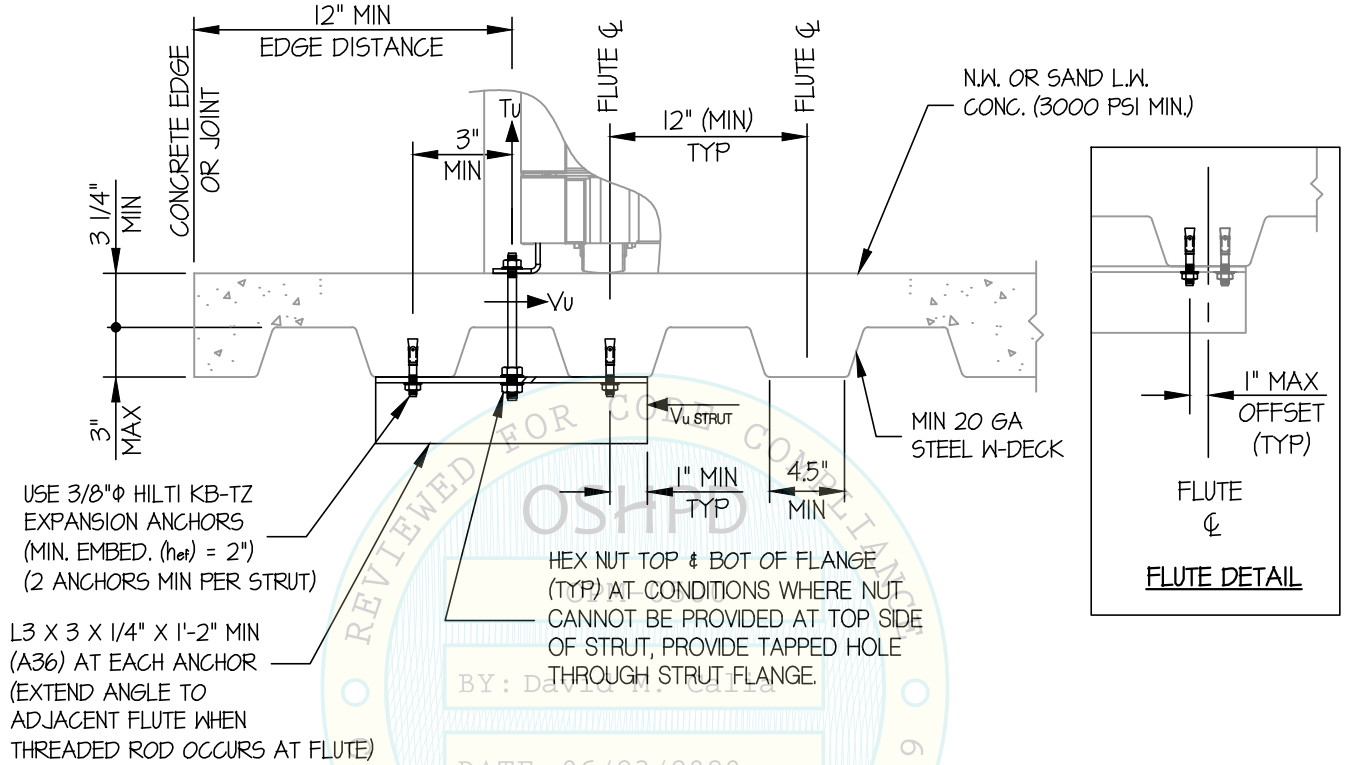
SHEET

7

OF 8 SHEETS

SEISMIC SUPPORTS & ATTACHMENTS

CONCRETE DETAIL



MIN STEEL DECK REQUIREMENTS AND STRUT DETAIL (A)



### STERIS CORPORATION

### V-PRO S2 STERILIZER

DES. J. ROBERSON

JOB NO. 14-2007

DATE 5/22/20

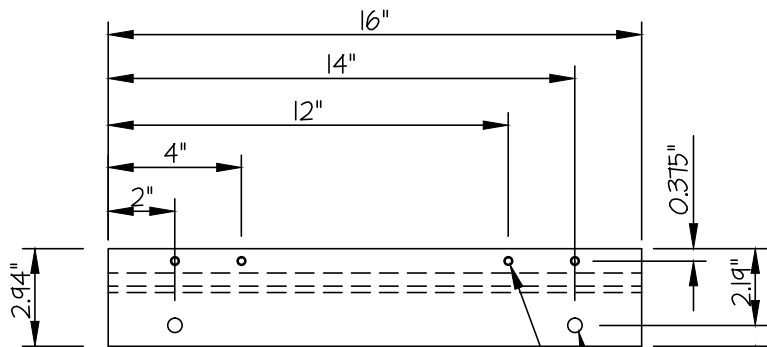
SHEET

# 8

OF 8 SHEETS

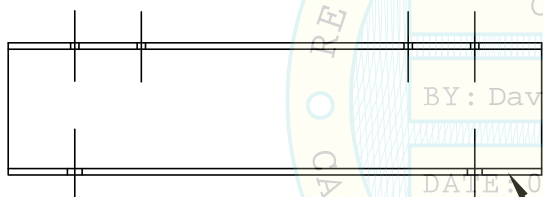
#### SEISMIC SUPPORTS & ATTACHMENTS

#### BRACKET DETAIL



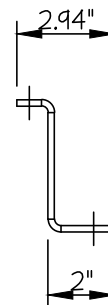
PLAN

- (2)- 7/16"  $\phi$  HOLES
- (4)- 1/4"  $\phi$  TAPPED HOLES



FRONT

BRACKET  
(0.194" THK, ASTM A36, Fy=36 KSI MIN)  
PROVIDED BY STERIS



SIDE

### BRACKET DETAIL (B)

