



DEPARTMENT OF HEALTH CARE ACCESS AND INFORMATION
FACILITIES DEVELOPMENT DIVISION

APPLICATION FOR HCAI PREAPPROVAL OF
MANUFACTURER'S CERTIFICATION (OPM)

OFFICE USE ONLY

APPLICATION #: OPM-0507

HCAI Preapproval of Manufacturer's Certification (OPM)

Type: [] New [X] Renewal/Update

Manufacturer Information

Manufacturer: Belimed, Inc

Manufacturer's Technical Representative: Jay Upchurch

Mailing Address: 8351 Palmetto Commerce Parkway, Suite 10, Ladson, SC 29456

Telephone: (843) 216-7424 Email: jay.upchurch@belimed.com

Product Information

Product Name: MST-H(10.02) 96XHSX and HSXE Sterilizers

Product Type: Sterilizers

Product Model Number: 9612HS1, 9612HS1E, 9615HS1, 9615HS1E, 9618HS1, and 9618HS1E

General Description: MST-H 9 series are medical steam sterilizers with an optional internally mounted steam generator. These sterilizers come in single door and double door configurations.

Applicant Information

Applicant Company Name: Belimed, Inc

Contact Person: Jay Upchurch

Mailing Address: 8351 Palmetto Commerce Parkway, Suite 10, Ladson, SC 29456

Telephone: (843) 216-7424 Email: jay.upchurch@belimed.com

Title: Product Manager

"A healthier California where all receive equitable, affordable, and quality health care"

STATE OF CALIFORNIA - HEALTH AND HUMAN SERVICES AGENCY





DEPARTMENT OF HEALTH CARE ACCESS AND INFORMATION
FACILITIES DEVELOPMENT DIVISION

Registered Design Professional Preparing Engineering Recommendations

Company Name: ISAT SEISMIC BRACING
Name: Deep Shah California License Number: S5867
Mailing Address: 14848 Northam Street, La Mirada, CA 90638
Telephone: (714) 523-1771 Email: dshah@isatsb.com

HCAI Special Seismic Certification Preapproval (OSP)

Special Seismic Certification is preapproved under OSP OSP Number:

Certification Method

Testing in accordance with: ICC-ES AC156 FM 1950-16
Other(s) (Please Specify):

*Use of criteria other than those adopted by the California Building Standards Code, 2022 (CBSC 2022) for component supports and attachments are not permitted. For distribution system, interior partition wall, and suspended ceiling seismic bracings, test criteria other than those adopted in the CBSC 2022 may be used when approved by HCAI prior to testing.

Analysis
Experience Data
Combination of Testing, Analysis, and/or Experience Data (Please Specify):

HCAI Approval

Date: 2/29/2024
Name: Timothy Piland Title: Senior Structural Engineer
Condition of Approval (if applicable):

"A healthier California where all receive equitable, affordable, and quality health care"

STATE OF CALIFORNIA – HEALTH AND HUMAN SERVICES AGENCY





Submittal Documents

OSHPD OPM-0507

**SUPPORT AND ATTACHMENT
CONSTRUCTION DRAWINGS**

DATE: 02/29/2024

**MST-H (10.02) 9-6-X HSX
AND HSXE STERILIZERS**

BELIMED

ISAT
14848 Northam Street,
La Mirada, CA 90638
877-999-4728

FILE NO.: CLT1018-215



02/28/2024



OSHPD OPM-0507

DRAWING INDEX FOR MST-H (10.02) 9-6-X HSX AND HSXE STERILIZERS



BY: Timothy Piland

DATE: 02/29/2024

INDEX

Cover Page	p i
Index Page	p ii
General Notes	p 1
Attachment Notes	p 2
MST-H(10.02) Layout	p 3
Slab-on-Grade Details	p 4
Miscellaneous Steel	p 5
MST-H (10.02) Dimensions	p 6
MST-H (10.02) Anchorage Forces	p 7

FILE NO.: CLT-1018-215

“Empowered by Experience”

OSHPD OPM-0507

MANUFACTURER: BELIMED
EQUIPMENT TYPE: STERILIZER

GENERAL NOTES

1. THIS OSHPD PREAPPROVAL OF MANUFACTURER'S CERTIFICATION (OPM) IS BASED ON THE CBC 2019 THE DEMAND (DESIGN FORCES) FOR USE WITH THIS OPM SHALL BE BASED ON THE CBC 2019
2. SEISMIC CRITERIA USED: FOR MODELS HS1, HS2 AND HS1E WHERE $S_{DS} = 2.25$ $I_p = 1.5$ $a_p = 1.0$ $R_p = 1.5$ (OTHER MECHANICAL COMPONENT) FOR $z/h = 0.0$ $F_pH = 1.01$ AND FOR $z/h \leq 1.0$ $F_pH = 2.70$ AND $F_pV = 0.45$. FOR MODEL HS2E WHERE $S_{DS} = 1.8$, FOR $z/h = 0$ $F_pH = 0.81$, FOR $z/h = 1.0$ $F_pH = 2.16$ AND $F_pV = 0.36$.
3. SUPPORT AND ATTACHMENT FORCES ARE DETERMINED USING ASCE 7-16 CHAPTER 13 "SEISMIC DESIGN REQUIREMENTS FOR NONSTRUCTURAL COMPONENTS". AN OVERSTRENGTH FACTOR $\Omega = 1.5$ IS USED FOR CONCRETE ANCHORAGE FORCES PER CBC 2019 SECTION 1617A.1.23. LOADS SHOWN ARE STRENGTH DESIGN LOADS PER CBC 2019 SECTION 1605A.2
4. THIS PREAPPROVAL COVERS ONLY THE SUPPORTS AND ATTACHMENTS OF THE EQUIPMENT TO THE STRUCTURE.
5. VOIDED
6. STEEL MATERIALS: THROUGH BOLTS AISI A2 STAINLESS STEEL (ULTIMATE TENSILE STRENGTH OF 73.2 KSI [505 MPa]) WITH MATCHING WASHERS AND NUTS. ATTACHMENT BRACKET BY BELIMED EURONORM 1.4301 STAINLESS STEEL WITH A TENSILE STRENGTH OF 75 KSI [520 MPa] AND MINIMUM YIELD STRENGTH OF 39 KSI [270 MPa].
7. CONCRETE SLABS:
 - a. FOR SLAB ON GRADE OR ELEVATED SOLID CONCRETE SLABS: 6" MINIMUM THICKNESS OF NORMAL WEIGHT CONCRETE WITH 3000 PSI MINIMUM STRENGTH.
 - b. METAL DECK: 3" DEEP COMPOSITE STEEL DECK, 20 GAGE MINIMUM WITH FLUTE SPACING OF 12", 4.5 INCH MINIMUM BOTTOM FLUTE WIDTH WITH 3.25" SAND LIGHT WEIGHT OR NORMAL WEIGHT CONCRETE COVER AT 4000 PSI MINIMUM STRENGTH.
8. POST-INSTALLED CONCRETE ANCHORS: HILTI KWIK BOLTS TZ2 (ESR-4266) STAINLESS STEEL 0.625" DIAMETER x 4.75" MINIMUM HOLE DEPTH (4" EFFECTIVE EMBEDMENT) AND 60 FT-LBS INSTALLATION TORQUE. EDGE DISTANCE IS 18" MINIMUM.

OPM-0507 BELIMED MST-H(10.02) 9-6-X HSX AND HSXE STERILIZER
GENERAL NOTES

 ISAT TOTAL SUPPORT <small>Innovation • Engineering • BIM • Fabrication</small> <small>A Division of Tomarco Contractor Specialties</small> International Seismic Application Technology 14848 Northam Street, La Mirada, CA 90638 877-999-4728 www.isatsb.com		
	DRAWN BY: WVJ DATE: 10/29/18	
	REVISED BY: ML DATE: 02/28/24 REV NO: 3	
	<table border="1"><tr><td>SCALE N.T.S.</td><td>PAGE GEN NOTES</td></tr></table>	SCALE N.T.S.
SCALE N.T.S.	PAGE GEN NOTES	

OSHPD OPM - 0507 DWG - 1

OSHPD OPM-0507

MANUFACTURE: BELIMED
EQUIPMENT TYPE: STERILIZER

ATTACHMENT NOTES:

1. REFER TO OPM-0507 DETAILS FOR THE MATERIALS OF CONSTRUCTION AND FASTENER DIMENSIONS.
2. THROUGH BOLT INSTALLATION AND INSPECTION (DETAILS OF THE SUPPLEMENTAL STEEL AND CONNECTIONS TO STRUCTURE ARE SHOWN ON PAGE "MISC STEEL".)
 - a. THROUGH BOLTS ARE TO BE TORQUED BY 3/4 TURN OF THE NUT AFTER SNUG TIGHT CONDITION IS ACHIEVED. SNUG TIGHT CONDITION IS DEFINED AS THE TIGHTNESS REQUIRED TO BRING THE CONNECTED PLIES INTO FIRM CONTACT.
 - b. THROUGH BOLT HOLES SHALL BE 1/16" LARGER THAN THE BOLT SIZE (HOLE SIZE = BOLT SIZE + 1/16") FOR BOTH THE STEEL AND CONCRETE.
 - c. THROUGH BOLTS WITH STEEL-TO-STEEL CONNECTION IN TENSION DO NOT REQUIRE TESTING.
3. FOR POST INSTALLED CONCRETE ANCHORS PERIODIC SPECIAL INSPECTION SHALL BE IN ACCORDANCE WITH CBC 2019 SECTION 1705A AND TABLE 1705A.3 INCLUDING VERIFICATION OF ANCHOR TYPE, ANCHOR DIMENSIONS, CONCRETE TYPE, CONCRETE COMPRESSIVE STRENGTH, ANCHOR SPACING, EDGE DISTANCES, CONCRETE MEMBER THICKNESS, HOLE DIMENSIONS, ANCHOR EMBEDMENT AND ADHERENCE TO THE MANUFACTURER'S PRINTED INSTALLATION INSTRUCTIONS. IN ADDITION, FOLLOW THE PROVISIONS OF THE 2019 CALIFORNIA BUILDING CODE SECTION 1910A.5.5. TORQUE CONTROLLED POST-INSTALLED ANCHORS - TEST USING A CALIBRATED TORQUE WRENCH; 60 FOOT-POUNDS TORQUE FOR 5/8" ANCHORS AND 40 FOOT-POUNDS FOR 1/2" ANCHORS SHALL BE ACHIEVED WITHIN ONE-HALF TURN OF THE NUT. TEST 50% OF THE ANCHORS FOR EACH PIECE OF EQUIPMENT. IF ANY ANCHOR FAILS, TEST ALL ANCHORS. A REPORT OF TEST RESULTS ARE TO BE SUBMITTED TO THE ENFORCEMENT AGENCY. THE SEOR SHALL PROVIDE REMEDIAL ANCHORAGE DETAILS IN THE EVENT THAT AN ANCHOR FAILS TO MEET THE TEST REQUIREMENTS. FOR THROUGH BOLTS MARK THE NUT LOCATION AT SNUG TIGHT CONDITION. INSPECTOR IS TO VERIFY 3/4 TURN.
4. EXERCISE CARE WHEN DRILLING POST-INSTALLED ANCHORS TO AVOID DAMAGING CONCRETE REINFORCEMENT OR
5. PROVIDE FOR FULL THREAD ENGAGEMENT OF NUT AND WASHER.

RESPONSIBILITIES OF THE STRUCTURAL ENGINEER OF RECORD

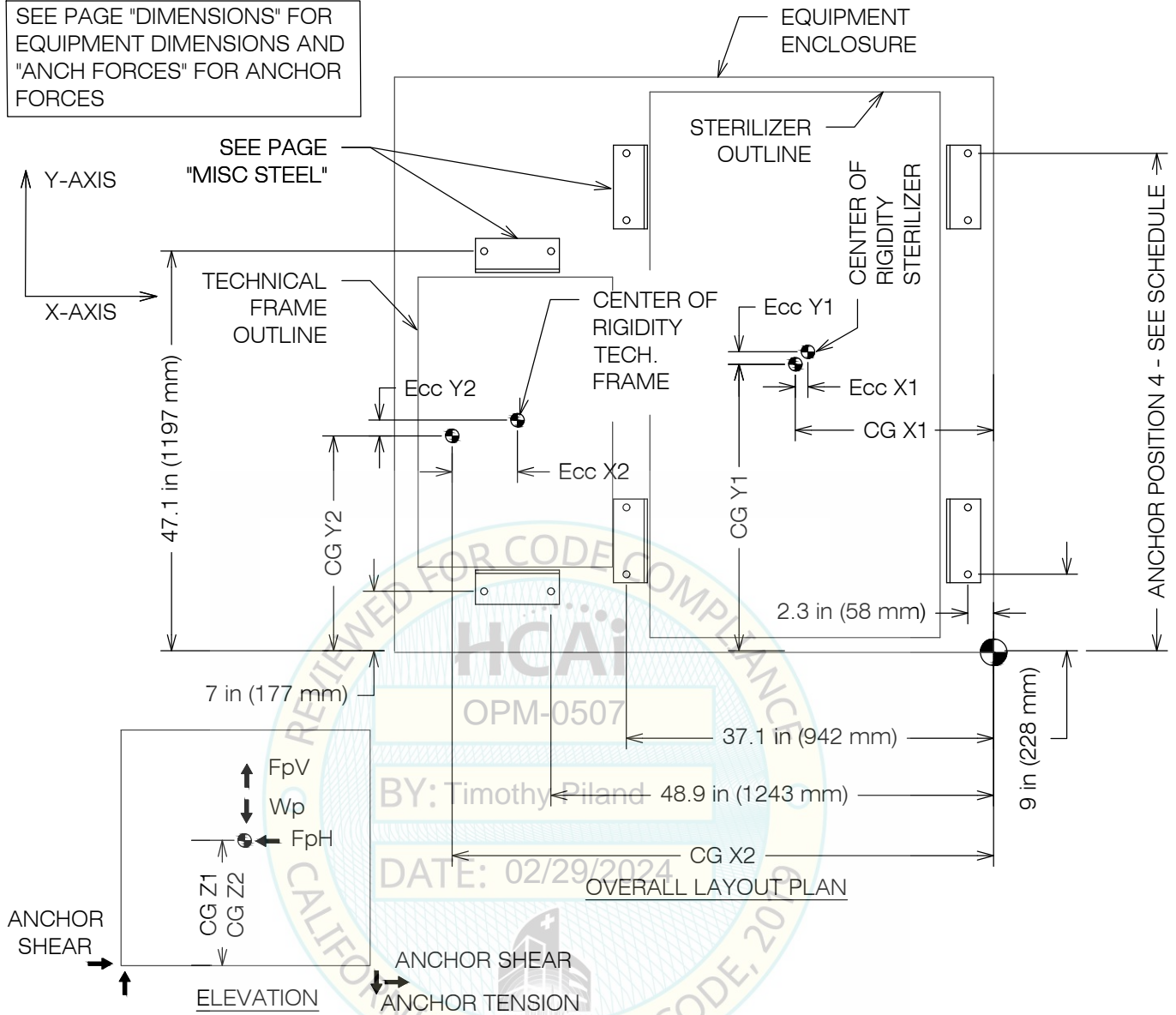
1. CONFIRM THE MINIMUM REQUIREMENTS SPECIFIED IN THIS OPM FOR THE CONCRETE SLAB ARE MET, INCLUDING MATERIAL PROPERTIES AND THICKNESS OF CONCRETE SLAB.
2. PROVIDE A PLAN FOR INSPECTION OF SUPPORTS AND ATTACHMENTS AND VERIFY ITS IMPLEMENTATION.
3. VERIFY THAT THE EXISTING STRUCTURE IS ADEQUATE FOR THE IMPOSED DEAD, LATERAL AND TENSION FORCES SHOWN IN ADDITION TO ALL OTHER LOADS.
4. VERIFY THAT THE INSTALLATION IS IN CONFORMANCE WITH CBC 2019 AND WITH THE OPM-0507 DETAILS.
5. VERIFY THAT THE PROJECT SPECIFIC S_{OS} AND z/h VALUES RESULT IN SEISMIC FORCES (E_H AND E_V) DO NOT EXCEED THE VALUES SHOWN IN THESE DETAILS.

OPM-0507 BELIMED MST-H(10.02) 9-6-X HSX AND 9-6-X HSXE STERILIZER


ATTACHMENT NOTES

 ISAT TOTAL SUPPORT <small>Innovation • Engineering • BIM • Fabrication</small> <small>A Division of Tomarco Contractor Specialties</small> International Seismic Application Technology 14848 Northam Street, La Mirada, CA 90638 877-999-4728 www.isatsb.com		
	DRAWN BY: WVJ DATE: 10/29/18	
	REVISED BY: ML DATE: 02/28/24 REV NO: 3	
	<table border="1" style="width: 100%;"> <tr> <td style="width: 50%;">SCALE N.T.S.</td> <td style="width: 50%;">PAGE ATTACHMENT</td> </tr> </table>	SCALE N.T.S.
SCALE N.T.S.	PAGE ATTACHMENT	

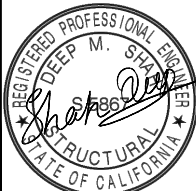
SEE PAGE "DIMENSIONS" FOR EQUIPMENT DIMENSIONS AND "ANCH FORCES" FOR ANCHOR FORCES



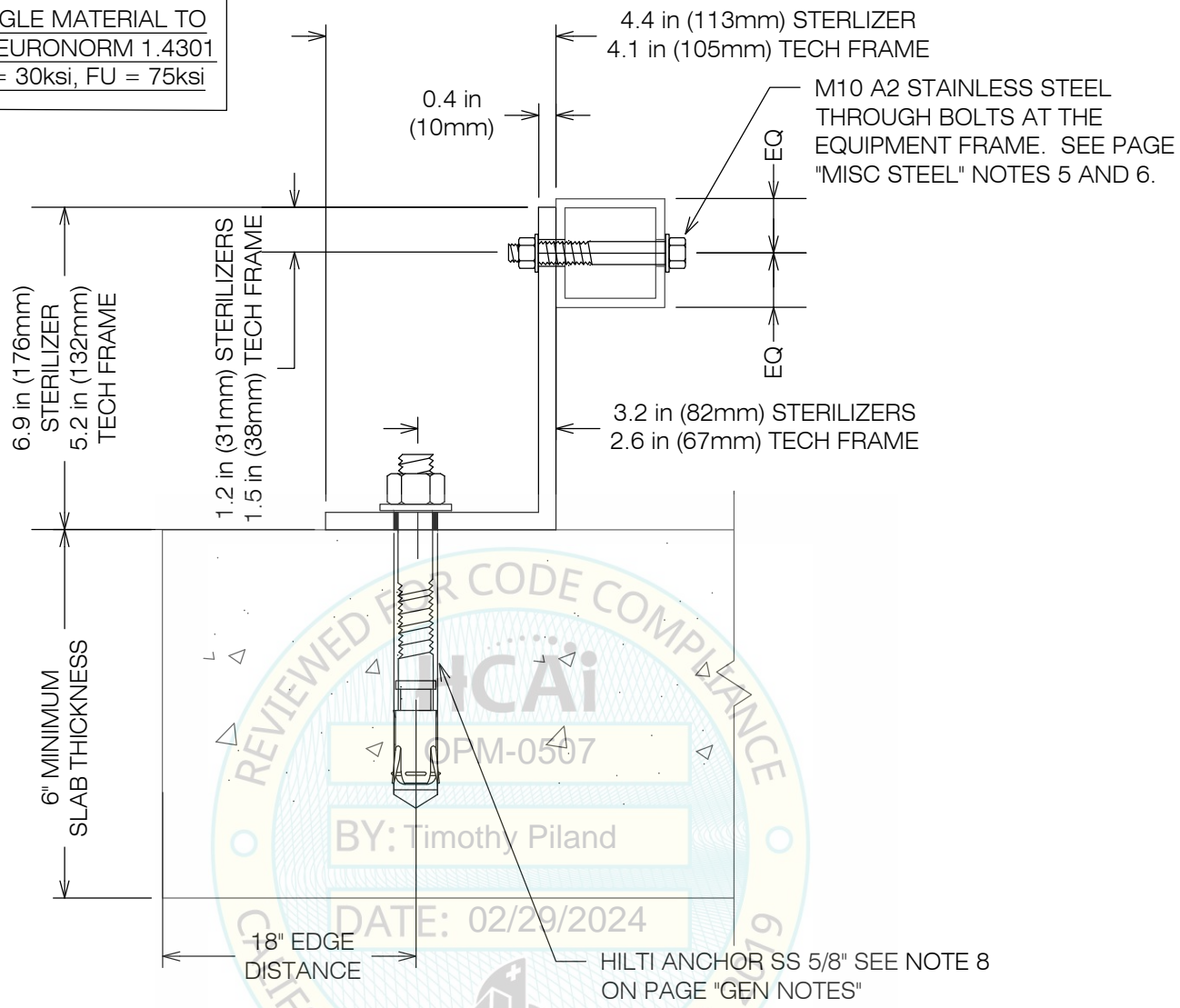
OPM-0507 BELIMED MST-H(10.02) 9-6-X HSX AND 9-6-X HSXE STERILIZER ANCHOR LAYOUT



ISAT
TOTAL SUPPORT
 Innovation • Engineering • BIM • Fabrication
 A Division of Tomarco Contractor Specialties
International Seismic Application Technology
 14848 Northam Street, La Mirada, CA 90638
 877-999-4728 www.isatsb.com

	DRAWN BY: WVJ DATE: 10/29/18	
	REVISED BY: ML DATE: 02/28/24 REV NO: 3	
	SCALE N.T.S.	PAGE MST-H (10.02)

ANGLE MATERIAL TO
BE Euronorm 1.4301
FY = 30ksi, FU = 75ksi

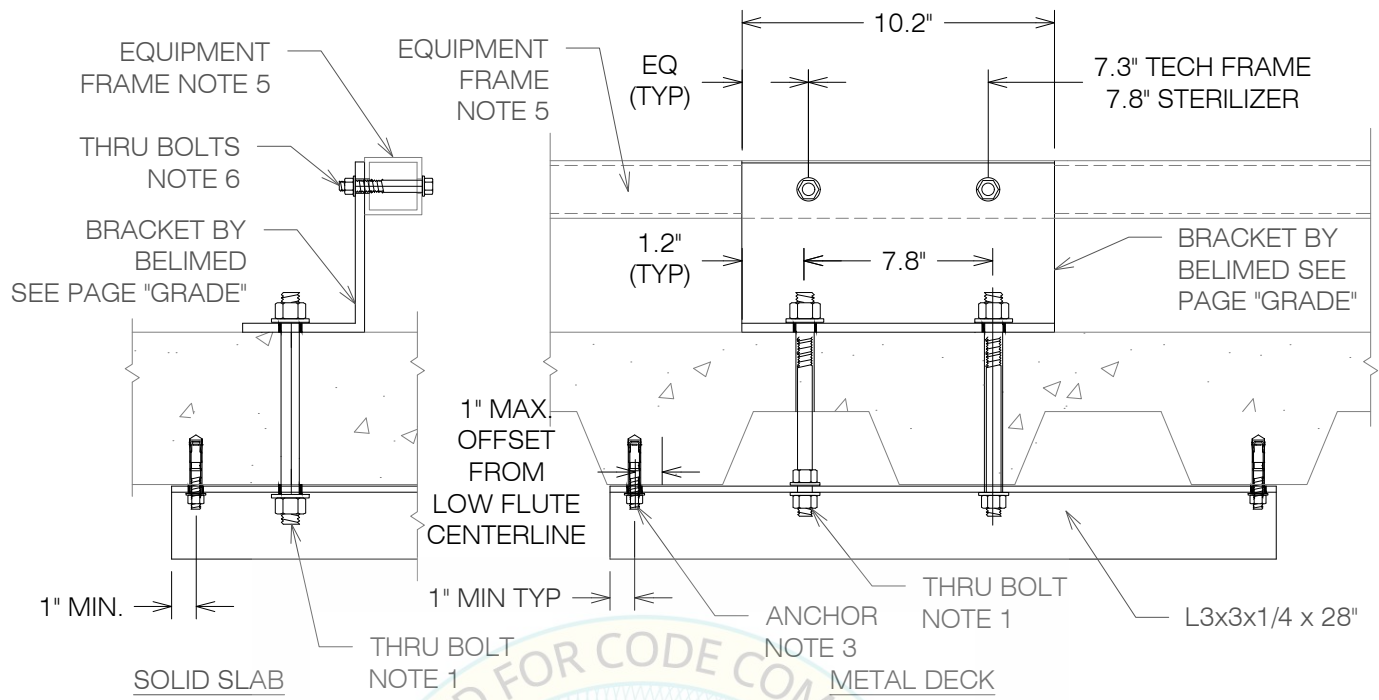


OPM-0507 BELIMED MST-H (10.02) SEISMIC BRACKET ATTACHMENT TO THE EQUIPMENT FRAME FOR LOCATIONS AT SLAB-ON-GRADE



ISAT
TOTAL SUPPORT
Innovation • Engineering • BIM • Fabrication
A Division of Tomarco Contractor Specialties
International Seismic Application Technology
14848 Northam Street, La Mirada, CA 90638
877-999-4728 www.isatsb.com

	DRAWN BY: WVJ DATE: 10/29/18	
	REVISED BY: ML DATE: 02/28/24 REV NO: 3	
	SCALE N.T.S.	PAGE GRADE



NOTES:

1. DRILL 11/16" HOLE IN THE CONCRETE SLAB TO RECEIVE THE 5/8" AISI 304 STAINLESS STEEL RODS (Fy=31.2 KSI, Fu=73.2 KSI) WITH MATCHING WASHERS AND NUTS. MAINTAIN 18" EDGE DISTANCE.
2. FOR LOCATIONS WHERE A TOP NUT CANNOT BE INSTALLED IN THE SUPPLEMENTAL STEEL ANGLE, DRILL AND TAP THE STEEL MATERIAL TO RECEIVE THE 5/8" EQUIPMENT ANCHORAGE BOLT
3. ANCHOR INTO BOTTOM OF SLAB SHALL BE HILTI KWIK BOLT TZ2 (ESR-4266) 1/2" x 4" HOLE DEPTH (3 1/4" EFFECTIVE EMBEDMENT) AND 40 FT-LBS INSTALLATION TORQUE (STAINLESS STEEL) AND 50 FT-LBS INSTALLATION TORQUE (CARBON STEEL)
4. SEE PAGE "GEN NOTES" NOTE 7 FOR CONCRETE SLAB AND METAL DECK REQUIREMENTS.
5. EQUIPMENT FRAME IS 2.4in x 2.4in x 0.2in (60 mm x 60 mm x 5 mm) EURONORM 1.0037 ASTM EQUIVALENT A283 C - A570 GR. 33 (316L STAINLESS STEEL, Fy = 30 KSI MIN, Fu = 75 KSI).
6. THROUGH BOLTS AT THE EQUIPMENT FRAME ARE TO BE M10 A2 STAINLESS STEEL (Fu = 100 KSI). FIELD DRILL 0.563" HOLES IN FRAME AFTER VERTICAL ADJUSTMENT OF THE EQUIPMENT.

**OPM-0507 BELIMED MST-H(10.02) MISCELLANEOUS STEEL
AND ATTACHMENT DETAILS AT ELEVATED SLABS**



ISAT
TOTAL SUPPORT
Innovation • Engineering • BIM • Fabrication
A Division of Tomarco Contractor Specialties
International Seismic Application Technology
14848 Northam Street, La Mirada, CA 90638
877-999-4728 www.isatsb.com

	DRAWN BY: WVJ DATE: 02/26/16	
	REVISED BY: ML DATE: 02/28/24 REV NO: 3	
	SCALE N.T.S.	PAGE MISC. STEEL

OSHPD OPM - 0507 DWG - 5

BELIMED MST-H (10.02) 9-6-X HSX STERILIZERS DIMENSIONS AND WEIGHTS								
Sterilizer		9-6-12 HS1	9-6-15 HS1	9-6-18-HS1	9-6-9 HS2	9-6-12 HS2	9-6-15 HS2	9-6-18-HS2
Operating Wt	lb	3783	4332	4738	4279	4758	5317	5743
CG X1	in	22.2	22.2	22.2	22.2	22.2	22.2	22.2
Ecc X1	in	2.6	2.6	2.6	2.5	2.5	2.5	2.5
CG Y1	in	28.6	34.3	40.1	27.1	33.9	40.0	45.9
Ecc Y1	in	-5.1	-5.5	-5.7	0.0	0.1	0.2	0.1
CG Z1	in	33.6	33.6	33.6	33.7	33.7	33.7	33.7
Anchor Postion 4	in	58.5	70.6	82.8	45.1	58.5	70.6	82.8
Technical Frame		9-6-12 HS1	9-6-15 HS1	9-6-18-HS1	9-6-9 HS2	9-6-12 HS2	9-6-15 HS2	9-6-18-HS2
Operating Wt	lb	463	485	485	463	463	485	485
CG X2	in	60.2	60.0	60.0	60.2	60.2	60.0	60.0
Ecc X2	in	7.5	7.5	7.5	8.9	8.9	8.7	8.7
CG Y2	in	25.3	25.3	25.3	25.3	25.3	25.3	25.3
Ecc Y2	in	-1.7	-1.7	-1.7	-1.7	-1.7	-1.7	-1.7
CG Z2	in	23.0	21.7	21.7	23.0	23.0	21.7	21.7

BELIMED MST-H (10.02) 9-6-X HSXE STERILIZERS WITH STEAM GENERATOR DIMENSIONS AND WEIGHTS								
Sterilizer		9-6-12 HS1E	9-6-15 HS1E	9-6-18-HS1E	9-6-9 HS2E	9-6-12 HS2E	9-6-15 HS2E	9-6-18-HS2E
Operating Wt	lb	4634	5311	5717	5018	5609	6301	6722
CG X1	in	22.8	22.8	22.7	22.6	22.6	22.6	22.6
Ecc X1	in	3.1	3.1	3.1	2.9	3.0	3.0	2.9
CG Y1	in	29.1	33.8	45.9	27.0	33.5	38.7	43.8
Ecc Y1	in	-4.6	-6.0	0.0	0.0	-0.3	-1.1	-2.1
CG Z1	in	41.2	41.3	40.8	39.8	40.0	40.2	39.8
Anchor Postion 4	in	58.5	70.7	82.8	45.1	58.5	70.6	82.8
Technical Frame		9-6-12 HS1E	9-6-15 HS1E	9-6-18-HS1E	9-6-9 HS2E	9-6-12 HS2E	9-6-15 HS2E	9-6-18-HS2E
Operating Wt	lb	463	485	485	463	463	485	485
CG X2	in	60.2	60.0	60.0	60.2	60.2	60.0	60.0
Ecc X2	in	8.9	8.7	8.7	8.9	8.9	8.7	8.7
CG Y2	in	25.3	25.3	25.3	25.3	25.3	25.3	25.3
Ecc Y2	in	-1.7	-1.7	-1.7	-1.7	-1.7	-1.7	-1.7
CG Z2	in	23.0	21.7	21.7	23.0	23.0	21.7	21.7

OPM-0507 BELIMED MST-H(10.02) 9-6-X HSX AND HSXE DIMENSIONS AND WEIGHTS



ISAT
TOTAL SUPPORT
Innovation • Engineering • BIM • Fabrication
A Division of Tomarco Contractor Specialties
International Seismic Application Technology
14848 Northam Street, La Mirada, CA 90638
877-999-4728 www.isatsb.com

	DRAWN BY: WVJ	
	DATE: 10/29/18	
	REVISED BY: ML	
DATE: 02/28/24		PAGE DIMENSIONS
REV NO: 3		
SCALE N.T.S.		

BELIMED MST-H (10.02) 9-6-X HSX STERILIZERS ANCHORAGE FORCES							
Model		Attachment at Grade			Attachment at Elevated Slab		
MST-H (10.02) STERILIZER	S_{DS}	Anchor Type See Page "GEN NOTES" - Note 8	Forces at Grade ⁴		Anchor Type ² Note 2	Forces at Elevated Slab	
			Tu - Lbs	Vu - Lbs		Tu - Lbs	Vu - Lbs
9-6-12 HS1	2.25	HILTI KB TZ SS 0.625" x 4" EFF. EMBED.	1637	737	0.625" SS ROD	3128	1966
9-6-15 HS1	2.25	HILTI KB TZ SS 0.625" x 4" EFF. EMBED.	1616	821	0.625" SS ROD	3141	2190
9-6-18 HS1	2.25	HILTI KB TZ SS 0.625" x 4" EFF. EMBED.	1615	884	0.625" SS ROD	3176	2358
9-6-9 HS2	2.25	HILTI KB TZ SS 0.625" x 4" EFF. EMBED.	2571	1084	0.625" SS ROD	4705	2891
9-6-12 HS2	2.25	HILTI KB TZ SS 0.625" x 4" EFF. EMBED.	2212	1216	0.625" SS ROD	4097	3243
9-6-15 HS2	2.25	HILTI KB TZ SS 0.625" x 4" EFF. EMBED.	2173	1349	0.625" SS ROD	4054	3597
9-6-18 HS2	2.25	HILTI KB TZ SS 0.625" x 4" EFF. EMBED.	2611	1444	0.625" SS ROD	4857	3850
Technical Frame	2.25	HILTI KB TZ SS 0.625" x 3.125" EFF. EMBED.	1024	155	0.625" SS ROD	1837	514

BELIMED MST-H (10.02) 9-6-X HSXE STERILIZERS WITH STEAM GENERATOR ANCHORAGE FORCES							
Model		Attachment at Grade			Attachment at Elevated Slab		
MST-H (10.02) STERILIZER	S_{DS}	Anchor Type See Page "GEN NOTES" - Note 8	Forces at Grade ⁴		Anchor Type ²	Forces at Elevated Slab ⁴	
			Tu - Lbs	Vu - Lbs		Tu - Lbs	Vu - Lbs
9-6-12 HS1E	2.25	HILTI KB TZ SS 0.625" x 4" EFF. EMBED.	2565	968	0.625" SS ROD	4806	2581
9-6-15 HS1E	2.25	HILTI KB TZ SS 0.625" x 4" EFF. EMBED.	2535	1028	0.625" SS ROD	4835	2742
9-6-18 HS1E	2.25	HILTI KB TZ SS 0.625" x 4" EFF. EMBED.	2676	1458	0.625" SS ROD	4965	3888
9-6-9 HS2E	1.8	HILTI KB TZ SS 0.625" x 4" EFF. EMBED.	2847	1044	0.625" SS ROD	5211	2784
9-6-12 HS2E	1.8	HILTI KB TZ SS 0.625" x 4" EFF. EMBED.	2410	1157	0.625" SS ROD	4518	3085
9-6-15 HS2E	1.8	HILTI KB TZ SS 0.625" x 4" EFF. EMBED.	2338	1248	0.625" SS ROD	4463	3328
9-6-18 HS2E	1.8	HILTI KB TZ SS 0.625" x 4" EFF. EMBED.	2222	1248	0.625" SS ROD	4325	3328
Technical Frame	2.25	HILTI KB TZ SS 0.625" x 3.125" EFF. EMBED.	1024	155	0.625" SS ROD	1837	514

1. T_u AND V_u VALUES FOR ANCHORAGE AT GRADE INCLUDES AN OVERSTRENGTH FACTOR OF 1.5 IN ACCORDANCE WITH PAGE "GEN NOTES" - NOTE 3. V_u VALUES FOR ANCHORAGE AT ELEVATED FLOORS INCLUDES AN OVERSTRENGTH FACTOR OF 1.5 IN ACCORDANCE WITH PAGE "GEN NOTES" - NOTE 3. T_u VALUES FOR ANCHORAGE AT ELEVATED FLOORS INCLUDES AN OVERSTRENGTH FACTOR OF 1.0.
2. SEE NOTE 6 ON PAGE "GEN NOTES".
3. SEE TABLE FOR S_{DS} VALUES. $S_{DS} = 2.25$ FOR HS1, HS2, HS1E AND TECHNICAL FRAME WITH F_{pH} GRADE = 1.01 AND F_{pH} ELEVATED = 2.70 AND $F_{pV} = 0.45$. $S_{DS} = 1.8$ FOR HS2E WITH F_{pH} GRADE = 0.81 AND F_{pH} ELEVATED = 2.16 AND $F_{pV} = 0.36$.
4. FORCES ARE STRENGTH DESIGN AND ARE PER ANCHOR BOLT.

OPM-0507 BELIMED MST-H(10.02) 9-6-X HSX AND 9-6-X HSXE ANCHORAGE FORCES



ISAT
TOTAL SUPPORT
Innovation • Engineering • BIM • Fabrication
A Division of Tomarco Contractor Specialties
International Seismic Application Technology
14848 Northam Street, La Mirada, CA 90638
877-999-4728 www.isatsb.com

	DRAWN BY: WVJ	
	DATE: 10/29/18	
	REVISED BY: ML	
		DATE: 02/28/24
		REV NO: 3
SCALE	PAGE	
N.T.S.	ANCH FORCES	

OSHPD OPM - 0507 DWG - 7