



OFFICE OF STATEWIDE HEALTH PLANNING AND DEVELOPMENT
FACILITIES DEVELOPMENT DIVISION

APPLICATION FOR OSHPD PREAPPROVAL OF
MANUFACTURER'S CERTIFICATION (OPM)

OFFICE USE ONLY

APPLICATION #: OPM-0520

OSHPD Preapproval of Manufacturer's Certification (OPM)

Type: ☒ New ☐ Renewal/Update

Manufacturer Information

Manufacturer: Belimed AG

Manufacturer's Technical Representative: Heike Hütterer

Mailing Address: Grienbachstrasse 11, Neustadt, 6302

Telephone: (71) 644-8665

Email: heike.huetterer@belimed.com

Product Information

Product Name: ELD / WTD (14) External

Product Type: Steam Generator / Steam Exchanger

Product Model Number: ELD / WTD 30, ELD / WTD 45, ELD / WTD 60, ELD / WTD 90

General Description: ELD / WTD: The purpose of this pressure device is to generate pure steam for general use for e.g. sterilizers.

Applicant Information

Applicant Company Name: ISAT

Contact Person: William Joerger

Mailing Address: 1020 Crews Rd, Suite Q, Matthews, NC 28105

Telephone: (510) 714-0216

Email: wvjoerger@isatsb.com

Title: Principal Structural Engineer

"Access to Safe, Quality Healthcare Environments that Meet California's Diverse and Dynamic Needs"

STATE OF CALIFORNIA – HEALTH AND HUMAN SERVICES AGENCY

OSHPD



OFFICE OF STATEWIDE HEALTH PLANNING AND DEVELOPMENT FACILITIES DEVELOPMENT DIVISION

Registered Design Professional Preparing Engineering Recommendations

Company Name: ISAT SEISMIC BRACING

Name: WILLIAM JOERGER

California License Number: S4545

Mailing Address: 14848 Northam Street, , La Mirada, CA 90638

Telephone: (877) 999-4728

Email: wvjoerger@isatsb.com

OSHDP Special Seismic Certification Preapproval (OSP)

☐ Special Seismic Certification is preapproved under OSP

OSP Number: _____

Certification Method

Testing in accordance with: ☐ ICC-ES AC156 ☐ FM 1950-16

☐ Other(s) (Please Specify): _____

*Use of criteria other than those adopted by the California Building Standards Code, 2019 (CBSC 2019) for component supports and attachments are not permitted. For distribution system, interior partition wall, and suspended ceiling seismic bracings, test criteria other than those adopted in the CBSC 2019 may be used when approved by OSHDP prior to testing.

☒ Analysis

☐ Experience Data

☐ Combination of Testing, Analysis, and/or Experience Data (Please Specify): _____

OSHDP Approval

Date: 6/30/2021

Name: Haeseong Lim

Title: Senior Structural Engineer

Condition of Approval (if applicable): _____



TOTAL SUPPORT

Innovation • Engineering • BIM • Fabrication

A Division of Tomarco Contractor Specialties

Submittal Documents

OPM-0520-19

OSHDP OPM-0520

DATE: 06/30/2021

ATTACHMENT OPM DRAWINGS ELD/WTD EXTERNAL STEAM GENERATOR / STEAM EXCHANGER

BELIMED

ISAT
1020 Crews Road Suite Q
Matthews, N.C. 28105
704-841-4080



WVJ 06/27/21
jo

FILE NO.: CLT-0818-222

“Empowered by Experience”

REV 4

OSHDP OPM-0520 DWG - i



OSHPD OPM-0520

DRAWING INDEX

DRAWING INDEX

Cover Page

p i

Index Page

p ii

Drawings for OPM-0520

General Notes

p 1

Attachment Notes

p 2

Dimensions and Anchorage Forces

p 3

Belimed ELD / WTD 30 Layout Plan

p 4

Belimed ELD / WTD 30 Elevation

p 5

Belimed ELD / WTD 30 Connections

p 6

Belimed ELD / WTD 30 Welds

p 7

Belimed ELD / WTD 45 Layout Plan

p 8

Belimed ELD / WTD 45 Elevation

p 9

Belimed ELD / WTD 45 Connections

p 10

Belimed ELD / WTD 45 Welds

p 11

Belimed ELD / WTD 60 Layout Plan

p 12

Belimed ELD / WTD 60 Elevation

p 13

Belimed ELD / WTD 60 Connections

p 14

Belimed ELD / WTD 60 Welds

p 15

FILE NO.: CLT-0118-222

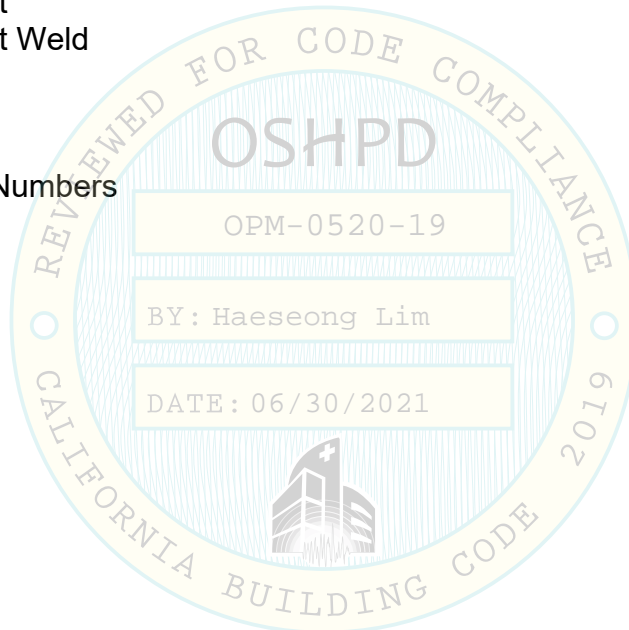
“Empowered by Experience”

Index Rev 4

OSHPD OPM-0520 DWG - ii

DRAWING INDEX (CONTINUED)

| | |
|---------------------------------------|------|
| Belimed ELD / WTD 90 Layout Plan | p 16 |
| Belimed ELD / WTD 90 Elevation | p 17 |
| Belimed ELD / WTD 90 Connections | p 18 |
| Belimed ELD / WTD 90 Welds | p 19 |
| Equipment Anchorage at Grade | p 20 |
| Equipment Anchorage at Elevated Slabs | p 21 |
| S2 Switch Bracket | p 22 |
| S1 Switch Bracket | p 23 |
| Corner Bracket | p 24 |
| Corner Bracket Weld | p 25 |
| Middle Bracket | p 26 |
| Middle Bracket Weld | p 27 |
| SG1 Bracket | p 28 |
| SG2 Bracket | p 29 |
| HSS | p 30 |
| Belimed Part Numbers | p 31 |



OSHDP OPM-0520

MANUFACTURE: BELIMED

EQUIPMENT TYPE: STEAM GENERATOR/STEAM EXCHANGER

GENERAL NOTES

1. THIS OSHDP PREAPPROVAL OF MANUFACTURER'S CERTIFICATION (OPM) IS BASED ON THE CBC 2019. THE DEMAND (DESIGN FORCES) FOR USE WITH THIS OPM SHALL BE BASED ON THE CBC 2019.
2. SEISMIC CRITERIA USED: $S_{DS} = 2.50$ $I_p = 1.5$ $a_p = 1.0$ $R_p = 1.5$ (OTHER MECHANICAL COMPONENT) $z/h = 0.0$
WITH $F_{pH} = 1.13$ AT GRADE OR $z/h \leq 1.0$ WITH $F_{pH} = 3.00$ FOR ELEVATED FLOORS. $F_{pV} = 0.50$.
3. SUPPORT AND ATTACHMENT FORCES ARE DETERMINED USING ASCE 7-16 CHAPTER 13 "SEISMIC DESIGN REQUIREMENTS FOR NONSTRUCTURAL COMPONENTS". AN OVERSTRENGTH FACTOR $\Omega_0 = 2.0$ IS USED FOR CONCRETE ANCHORAGE FORCES PER ASCE 7-16 TABLE 13.6-1. LOADS SHOWN ARE STRENGTH DESIGN LOADS PER ASCE 7-16 SECTION 12.4.3.2.
4. THIS PREAPPROVAL COVERS ONLY THE SUPPORTS AND ATTACHMENTS OF THE EQUIPMENT TO THE STRUCTURE.
5. THIS PREAPPROVAL IS FOR CONCRETE SLAB AT GRADE OR ELEVATED SLABS FOR THE DEMAND LOADS SHOWN WHERE $S_{DS} \leq 2.5$.
6. STEEL MATERIALS: THROUGH BOLTS AISI 304 STAINLESS STEEL (MIN TENSILE STRENGTH OF 73 KSI) WITH MATCHING WASHERS AND NUTS. BRACKETS BY BELIMED EURONORM 1.4301 STAINLESS STEEL WITH A TENSILE STRENGTH OF 73KSI (500 Mpa) AND MINIMUM YIELD STRENGTH OF 28 KSI (195 Mpa, EQUIVALENT TO 304 SS). FRAME MEMBERS ARE FABRICATED FROM EURONORM 1.4301 STAINLESS STEEL EQUIVALENT TO 304 SS.
BOLTS FOR FRAME MATERIALS: 1.4301 (304) WITH TENSILE STRENGTH 102 KSI (700 N/mm²).
7. CONCRETE SLABS:
 - a. FOR SLAB ON GRADE OR ELEVATED SOLID CONCRETE SLABS: 6" MINIMUM THICKNESS OF NORMAL WEIGHT CONCRETE WITH 4000 PSI MINIMUM STRENGTH.
 - b. METAL DECK: 3" DEEP COMPOSITE STEEL DECK, 20 GAGE MINIMUM WITH FLUTE SPACING OF 12", 4.5 INCH MINIMUM BOTTOM FLUTE WIDTH WITH 3.25" SAND LIGHT WEIGHT OR NORMAL WEIGHT CONCRETE COVER AT 4000 PSI MINIMUM STRENGTH.
8. POST-INSTALLED CONCRETE ANCHORS FOR SOLID CONCRETE: HILTI KWIK BOLTS TZ (ESR-1917) STAINLESS STEEL 0.625" DIAMETER x 3.75" MIN HOLE DEPTH (3.125" EFFECTIVE EMBEDMENT), 4" MIN EDGE DISTANCE AND 3.62" MIN SPACING FOR SLAB ON GRADE. HILTI KWIK BOLTS TZ (ESR-1917) STAINLESS STEEL 0.625" DIAMETER x 4.75" MIN HOLE DEPTH (4" EFFECTIVE EMBEDMENT), 16" MIN EDGE DISTANCE AND 3.62" MIN SPACING FOR ELEVATED SOLID SLAB. TORQUE TO 60 FT-LBS. FOR ANCHORS INTO THE SOFFIT OF THE METAL DECK USE HILTI KWIK BOLTS TZ (ESR-1917) CARBON STEEL 0.50" DIAMETER x 2.75" MIN HOLE DEPTH (2" EFFECTIVE EMBEDMENT), 6" MIN EDGE DISTANCE AND 8" MIN SPACING FOR ELEVATED SLABS. TORQUE TO 40 FT-LBS.

OPM-0520 BELIMED ELD AND WTD STEAM GENERATOR/EXCHANGER

GENERAL NOTES



**A Division of Tomarco Contractor Specialties
International Seismic Application Technology**
1020 Crews Road, Suite Q, Matthews, NC 28105
704-841-4080 www.isatsb.com



DRAWN BY: WVJ
DATE: 12/26/18

REVISED BY: KJC
DATE: 01/01/2021
REV NO: 3

SCALE
N.T.S.

PAGE
GEN NOTES

OSHDP OPM-0520 DWG - 1

OSHPD OPM-0520

MANUFACTURE: BELIMED

EQUIPMENT TYPE: STEAM GENERATOR/STEAM EXCHANGER

ATTACHMENT NOTES:

1. REFER TO OPM-0520 DETAILS FOR THE MATERIALS OF CONSTRUCTION AND FASTENER DIMENSIONS.
2. THROUGH BOLT INSTALLATION AND INSPECTION (DETAILS OF THE SUPPLEMENTAL STEEL AND CONNECTIONS TO STRUCTURE ARE SHOWN ON PAGE "ELEVATED".)
 - a. THROUGH BOLTS ARE TO BE TORQUED BY 3/4 TURN OF THE NUT AFTER SNUG TIGHT CONDITION IS ACHIEVED. SNUG TIGHT CONDITION IS DEFINED AS THE TIGHTNESS REQUIRED TO BRING THE CONNECTED PLIES INTO FIRM CONTACT.
 - b. THROUGH BOLT HOLES SHALL BE 1/16" LARGER THAN THE BOLT SIZE (HOLE SIZE = BOLT SIZE + 1/16") FOR BOTH THE STEEL AND CONCRETE.
 - c. THROUGH BOLTS WITH STEEL-TO-STEEL CONNECTION IN TENSION DO NOT REQUIRE TESTING.
3. FOR POST INSTALLED CONCRETE ANCHORS PERIODIC SPECIAL INSPECTION SHALL BE IN ACCORDANCE WITH CBC 2019 SECTION 1705A AND TABLE 1705A.3 INCLUDING VERIFICATION OF ANCHOR TYPE, ANCHOR DIMENSIONS, CONCRETE TYPE, CONCRETE COMPRESSIVE STRENGTH, ANCHOR SPACING, EDGE DISTANCES, CONCRETE MEMBER THICKNESS, TIGHTENING TORQUE, HOLE DIMENSIONS, ANCHOR EMBEDMENT AND ADHERENCE TO THE MANUFACTURER'S PRINTED INSTALLATION INSTRUCTIONS. IN ADDITION, FOLLOW THE PROVISIONS OF THE 2019 CALIFORNIA BUILDING CODE SECTION 1910A.5 BY CONFIRMING THE INSTALLATION TORQUE OF 60 FT-LBS FOR 5/8" BOLTS AND 40 FT-LBS FOR 1/2" BOLTS. TEST 50% OF THE ANCHORS FOR EACH PIECE OF EQUIPMENT. IF ANY FAILS TEST ALL ANCHORS. TESTING AND SPECIAL INSPECTION OF EXPANSION ANCHORS SHALL BE PERFORMED BY AN APPROVED AGENCY EMPLOYED BY THE FACILITY OWNER PER CBC 1704A AND 1910A.5 AND CAC 7-249. A REPORT OF TEST RESULTS IS TO BE SUBMITTED TO THE INSPECTOR OF RECORD, OWNER AND ARCHITECT OR ENGINEER IN RESPONSIBLE CHARGE.
4. EXERCISE DUE CARE WHEN DRILLING POST-INSTALLED ANCHORS TO AVOID DAMAGING CONCRETE REINFORCEMENT OR TENDONS.
5. PROVIDE FOR FULL THREAD ENGAGEMENT OF NUT AND WASHER.

RESPONSIBILITIES OF THE STRUCTURAL ENGINEER OF RECORD

1. CONFIRM THE MINIMUM REQUIREMENTS SPECIFIED IN THIS OPM FOR THE CONCRETE SLAB ARE MET, INCLUDING MATERIAL PROPERTIES AND THICKNESS OF CONCRETE SLAB.
2. PROVIDE A PLAN FOR INSPECTION OF SUPPORTS AND ATTACHMENTS AND VERIFY ITS IMPLEMENTATION.
3. VERIFY THAT THE EXISTING STRUCTURE IS ADEQUATE FOR THE IMPOSED DEAD, LATERAL AND TENSION FORCES SHOWN IN ADDITION TO ALL OTHER LOADS.
4. VERIFY THAT THE INSTALLATION IS IN CONFORMANCE WITH CBC 2019 AND WITH THE OPM-0520 DETAILS.
5. VERIFY THAT THE PROJECT SPECIFIC S_{DS} AND z/h VALUES RESULT IN SEISMIC FORCES (E_h AND E_v) DO NOT EXCEED THE VALUES SHOWN IN THESE DETAILS.

OPM-0520 BELIMED ELD AND WTD STEAM GENERATOR/EXCHANGER
ATTACHMENT NOTES



**A Division of Tomarco Contractor Specialties
International Seismic Application Technology**
1020 Crews Road, Suite Q, Matthews, NC 28105
704-841-4080 www.isatsb.com



DRAWN BY: WVJ
DATE: 12/26/18

REVISED BY: KJC
DATE: 01/01/2021
REV NO: 3

| | |
|------------------------|---------------------------|
| SCALE N.T.S. | PAGE ATTACHMENT |
|------------------------|---------------------------|

OSHPD OPM-0520 DWG - 2

| BELIMED ELD/WTD STEAM GENERATOR/STEAM EXCHANGER DIMENSIONS AND WEIGHTS | | | | | | | | | |
|--|----|--------|--------|--------|--------|--------|--------|--------|--------|
| Steam Generator/ Steam Exchanger | | ELD 30 | ELD 45 | ELD 60 | ELD 90 | WTD 30 | WTD 45 | WTD 60 | WTD 90 |
| Operating Wt | lb | 538 | 666 | 756 | 869 | 560 | 672 | 750 | 827 |
| CG X | in | 14.4 | 14.8 | 14.3 | 15.1 | 14.0 | 14.7 | 14.1 | 14.4 |
| Ecc X | in | -2.4 | -1.9 | -2.1 | -1.3 | -2.4 | -1.8 | -2.1 | -1.8 |
| CG Y | in | 16.0 | 27.0 | 28.9 | 28.3 | 16.0 | 26.1 | 28.9 | 30.0 |
| Ecc Y | in | -1.2 | -0.2 | -5.3 | -4.2 | -1.3 | -0.8 | -5.2 | -4.2 |
| CG Z | in | 22.2 | 22.2 | 21.6 | 21.9 | 22.7 | 22.4 | 21.2 | 21.0 |

CENTER OF GRAVITY (CG) IN THE X AND Y DIMENSIONS IS MEASURED FROM THE LOWER RIGHT CORNER OF THE EQUIPMENT LEG; SEE EQUIPMENT PLAN SHEETS. CG Z IS MEASURED FROM THE FLOOR TO THE VERTICAL CENTER OF GRAVITY.

| Model | Attachment at Grade | | | Attachment at Elevated Slab | | |
|--------|--------------------------------|-----------------|----------|--|-------------------------|----------|
| | Anchor Type | Forces at Grade | | Anchor Type | Forces at Elevated Slab | |
| | See Page "GEN NOTES" - Note 8 | Vu - lbf | Tu - lbf | Note 2 | Vu - lbf | Tu - lbf |
| ELD 30 | HILTI KB ZT SS 0.625" x 3.125" | 421 | 602 | HILTI KB ZT SS 0.625" x 4" / 0.625" SS ROD | 1146 | 1684 |
| ELD 45 | HILTI KB ZT SS 0.625" x 3.125" | 515 | 577 | HILTI KB ZT SS 0.625" x 4" / 0.625" SS ROD | 1396 | 1619 |
| ELD 60 | HILTI KB ZT SS 0.625" x 3.125" | 624 | 639 | HILTI KB ZT SS 0.625" x 4" / 0.625" SS ROD | 1560 | 1755 |
| ELD 90 | HILTI KB ZT SS 0.625" x 3.125" | 667 | 499 | HILTI KB ZT SS 0.625" x 4" / 0.625" SS ROD | 1762 | 1938 |
| WTD 30 | HILTI KB ZT SS 0.625" x 3.125" | 421 | 602 | HILTI KB ZT SS 0.625" x 4" / 0.625" SS ROD | 1146 | 1684 |
| WTD 45 | HILTI KB ZT SS 0.625" x 3.125" | 515 | 577 | HILTI KB ZT SS 0.625" x 4" / 0.625" SS ROD | 1396 | 1619 |
| WTD 60 | HILTI KB ZT SS 0.625" x 3.125" | 624 | 639 | HILTI KB ZT SS 0.625" x 4" / 0.625" SS ROD | 1560 | 1755 |
| WTD 90 | HILTI KB ZT SS 0.625" x 3.125" | 667 | 499 | HILTI KB ZT SS 0.625" x 4" / 0.625" SS ROD | 1762 | 1938 |

1. Tu AND Vu VALUES INCLUDE AN OVERSTRENGTH FACTOR OF 2.0 IN ACCORDANCE WITH ASCE 7-16
2. SEE NOTE 6 OR 8 ON PAGE "GEN NOTES". FOR ANCHORS AT ELEVATED SLAB ON METAL DECK, USE 0.625" SS ROD

OPM-0520 BELIMED ELD AND WTD STEAM GENERATOR/EXCHANGER DIMENSIONS AND ANCHORAGE FORCES



**A Division of Tomarco Contractor Specialties
International Seismic Application Technology**
1020 Crews Road, Suite Q, Matthews, NC 28105
704-841-4080 www.isatsb.com



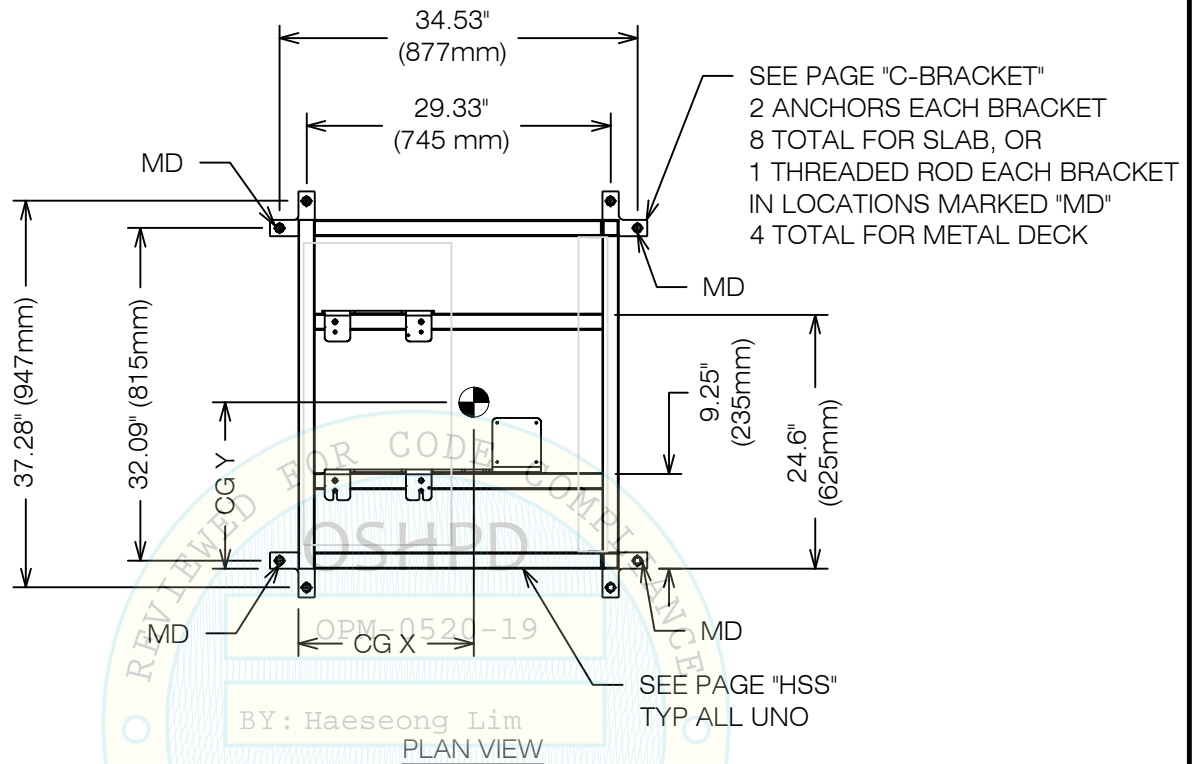
DRAWN BY: WVJ
DATE: 12/26/18

REVISED BY: KJC
DATE: 04/08/2021
REV NO: 4

SCALE
N.T.S.

PAGE
DIMENSIONS

OSHPD OPM-0520 DWG - 3



ANCHORS ARE BY INSTALLATION CONTRACTOR. SEE NOTE 8 ON PAGE "GEN NOTES".
SEE PAGE "SOLID" FOR ANCHORS INTO SOLID CONCRETE AT GRADE OR ELEVATED AND
PAGE "ELEVATED" FOR ANCHORS AT SLAB ON METAL DECK.

OPM-0520 BELIMED ELD 30, WTD 30 STEAM GENERATOR/EXCHANGER
FRAME LAYOUT AND ATTACHMENT PLAN



A Division of Tomarco Contractor Specialties
International Seismic Application Technology
1020 Crews Road, Suite Q, Matthews, NC 28105
704-841-4080 www.isatsb.com



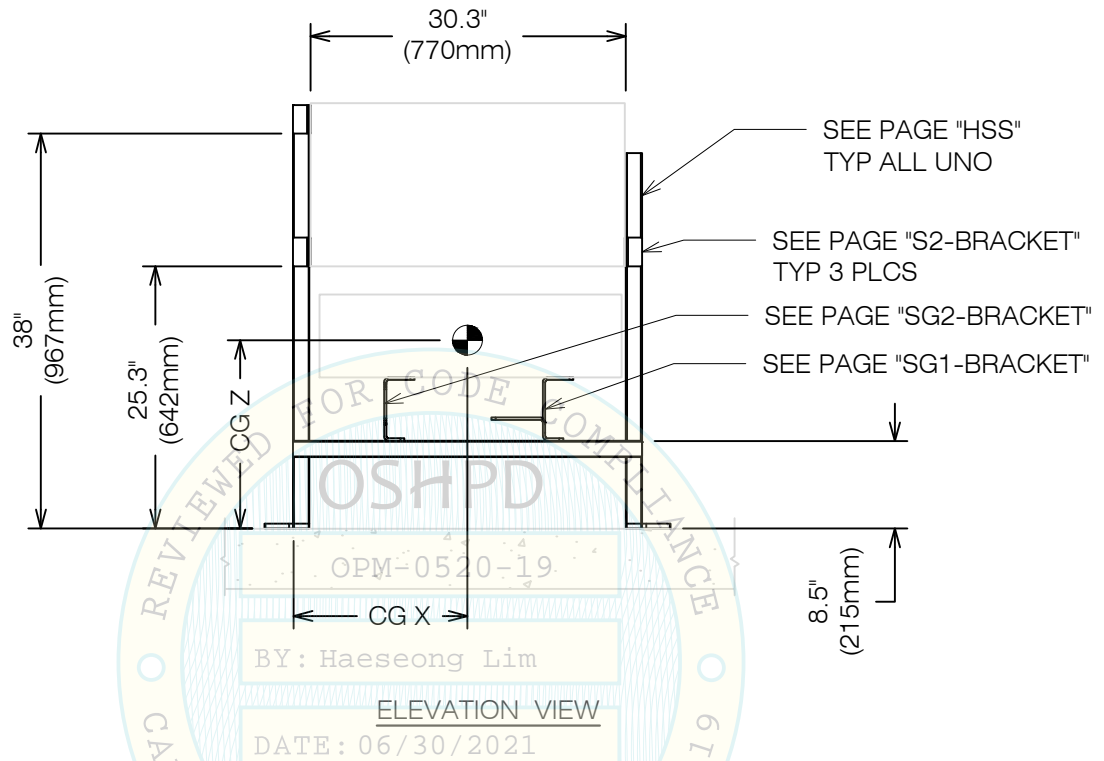
DRAWN BY: WVJ
DATE: 12/26/18

REVISED BY: KJC
DATE: 04/08/2021
REV NO: 4

SCALE
N.T.S.

PAGE
ELD30 PLAN

OSHDPD OPM-0520 DWG - 4



OPM-0520 BELIMED ELD 30, WTD 30 STEAM GENERATOR/EXCHANGER



A Division of Tomarco Contractor Specialties
International Seismic Application Technology
 1020 Crews Road, Suite Q, Matthews, NC 28105
 704-841-4080 www.isatsb.com



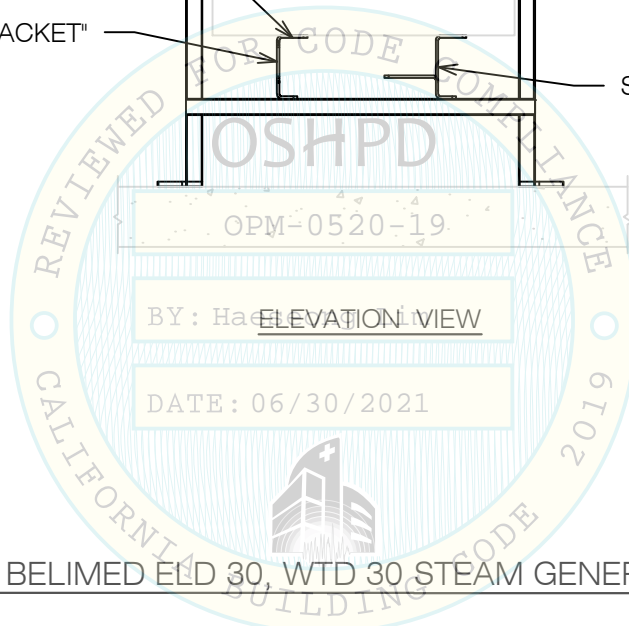
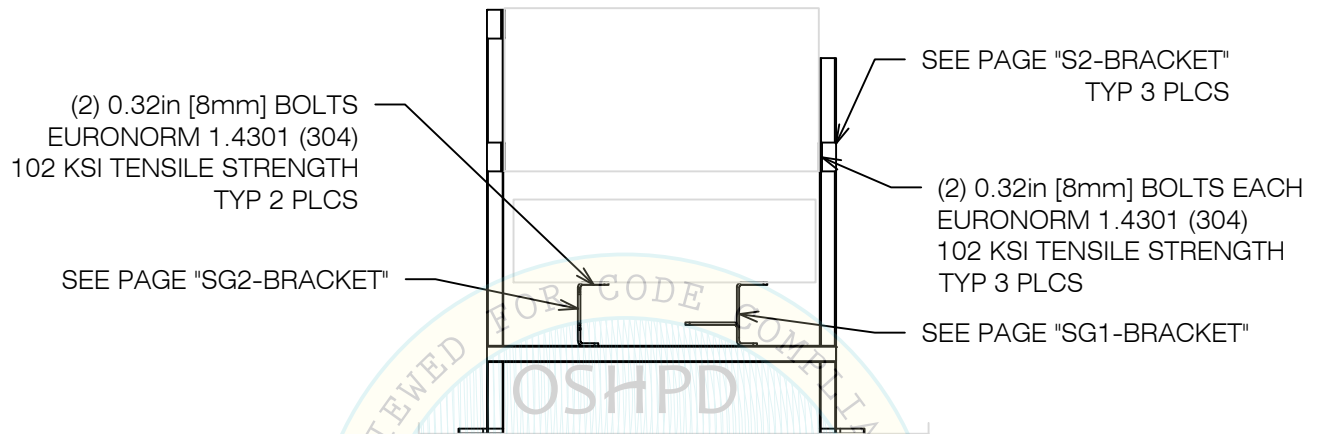
DRAWN BY: WVJ
DATE: 01/01/2021

REVISED BY: KJC
DATE: 04/08/2021
REV NO: 4

SCALE
 N.T.S.

PAGE
 ELD30 ELEV

OSHDP OPM-0520 DWG - 5



OPM-0520 BELIMED ELD 30, WTD 30 STEAM GENERATOR/EXCHANGER



A Division of Tomarco Contractor Specialties
International Seismic Application Technology
 1020 Crews Road, Suite Q, Matthews, NC 28105
 704-841-4080 www.isatsb.com



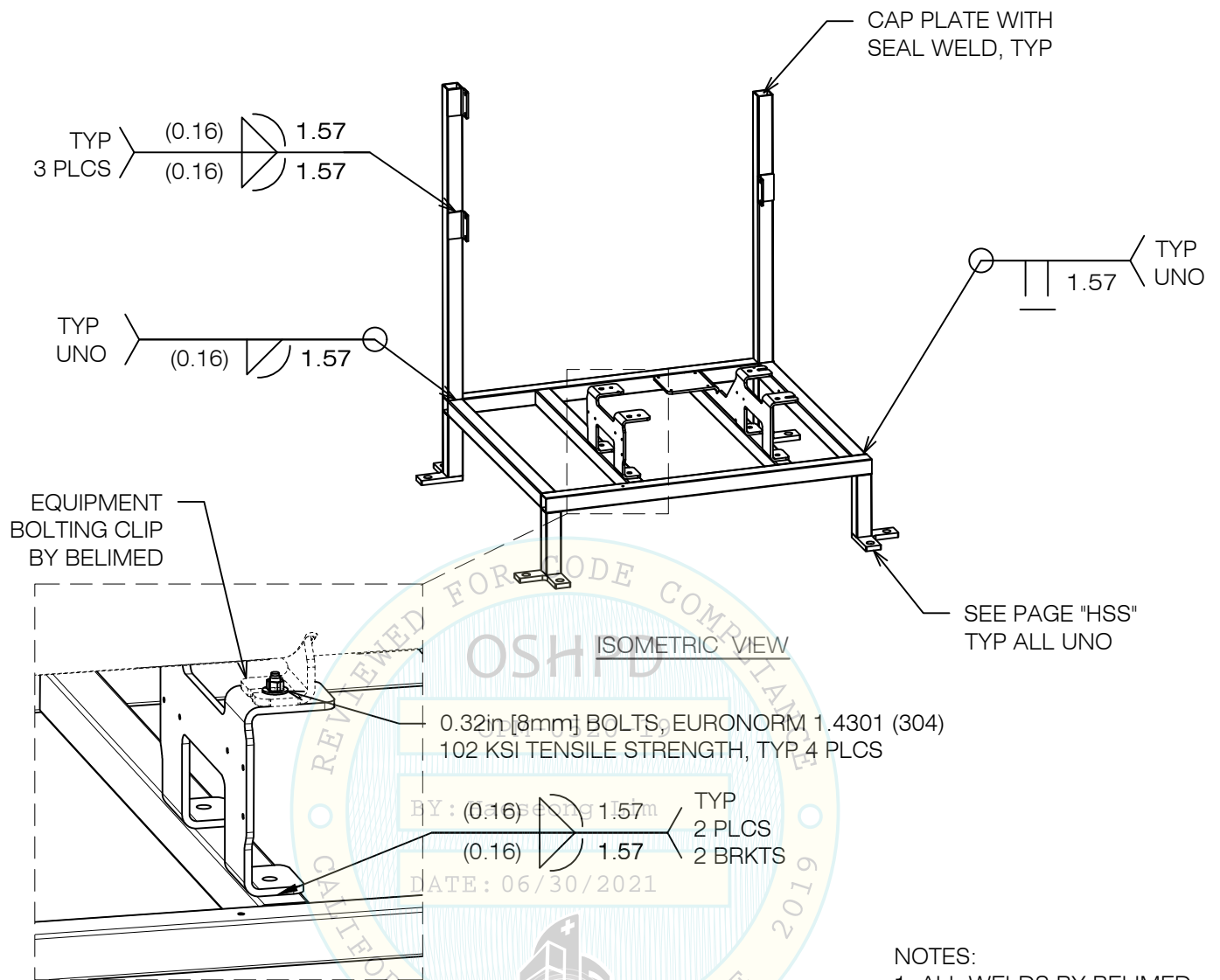
DRAWN BY: WVJ
DATE: 01/01/2021

REVISED BY: KJC
DATE: 04/08/2021
REV NO: 4

SCALE
 N.T.S.

PAGE
 ELD30 CONN

OSHPD OPM-0520 DWG - 6



OPM-0520 BELIMED ELD 30, WTD 30 STEAM GENERATOR/EXCHANGER



**A Division of Tomarco Contractor Specialties
International Seismic Application Technology**
1020 Crews Road, Suite Q, Matthews, NC 28105
704-841-4080 www.isatsb.com

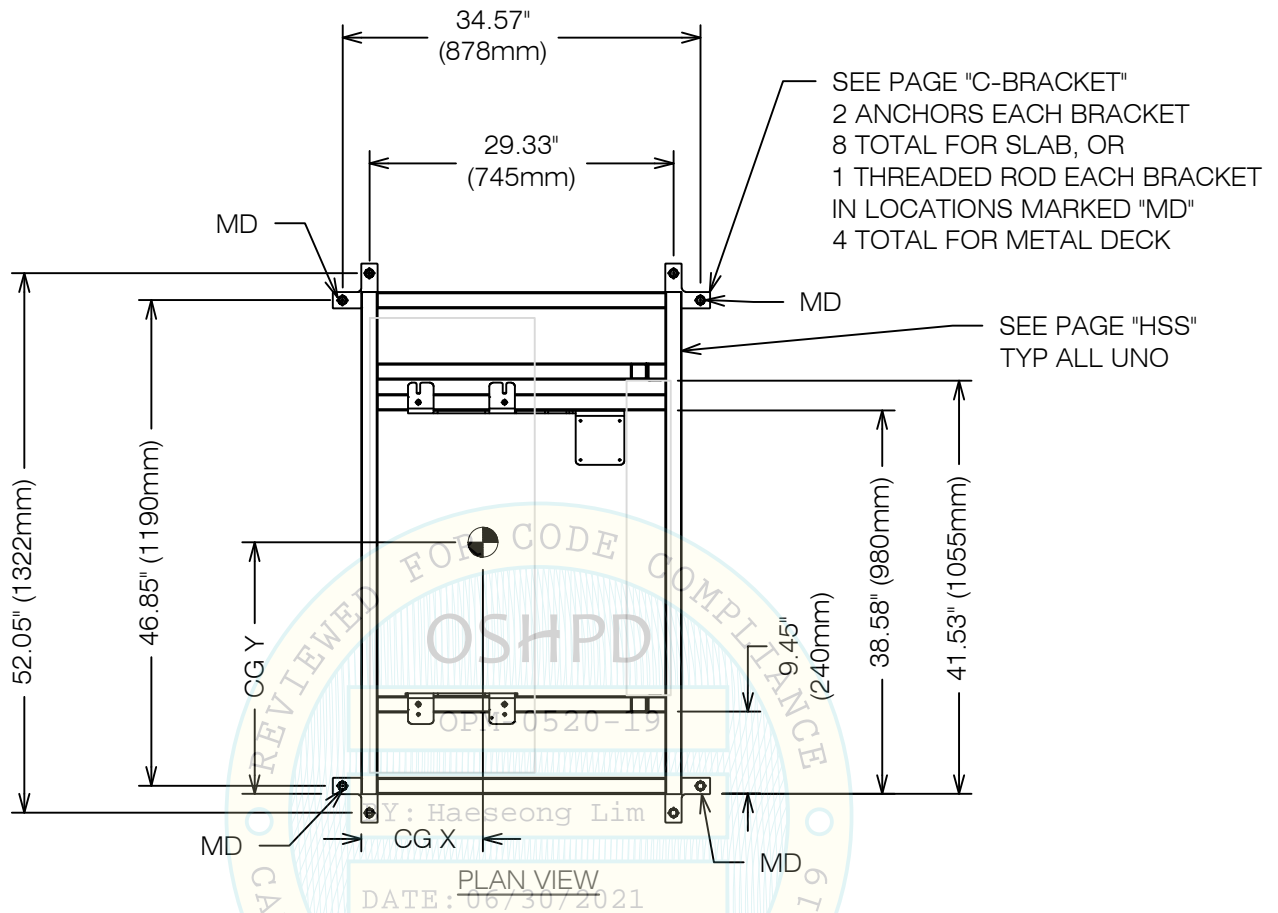


DRAWN BY: WVJ
DATE: 01/01/2021

REVISED BY: KJC
DATE: 04/08/2021
REV NO: 4

SCALE N.T.S. **PAGE** ELD30 WELD

OSHPD OPM-0520 DWG - 7



ANCHORS ARE BY INSTALLATION CONTRACTOR. SEE NOTE 8 ON PAGE "GEN NOTES". SEE PAGE "SOLID" FOR ANCHORS INTO SOLID CONCRETE AT GRADE OR ELEVATED AND PAGE "ELEVATED" FOR ANCHORS AT SLAB ON METAL DECK.

OPM-0520 BELIMED ELD 45, WTD 45 STEAM GENERATOR/EXCHANGER
FRAME LAYOUT AND ATTACHMENT PLAN



A Division of Tomarco Contractor Specialties
International Seismic Application Technology
1020 Crews Road, Suite Q, Matthews, NC 28105
704-841-4080 www.isatsb.com



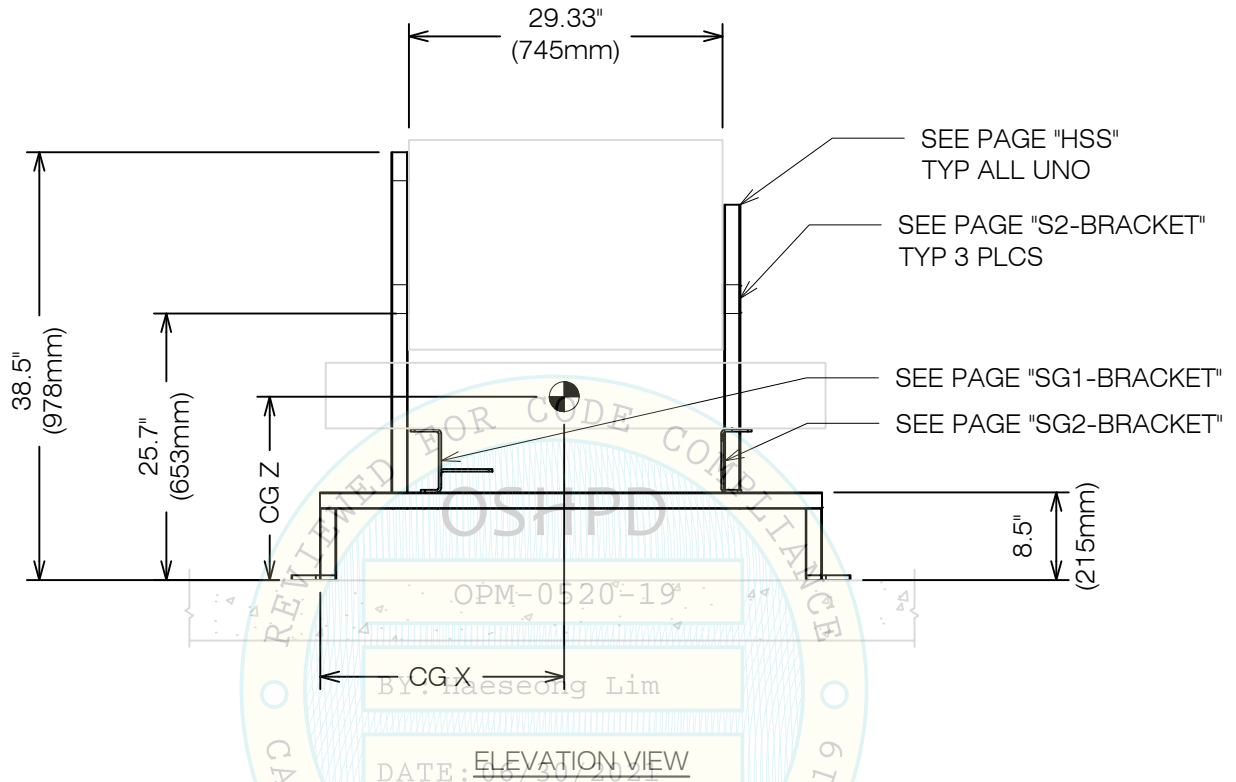
DRAWN BY: WVJ
DATE: 12/26/18

REVISED BY: KJC
DATE: 04/08/2021
REV NO: 4

SCALE
N.T.S.

PAGE
ELD45 PLAN

OSHDPD OPM-0520 DWG - 8



OPM-0520 BELIMED ELD 45, WTD 45 STEAM GENERATOR/EXCHANGER

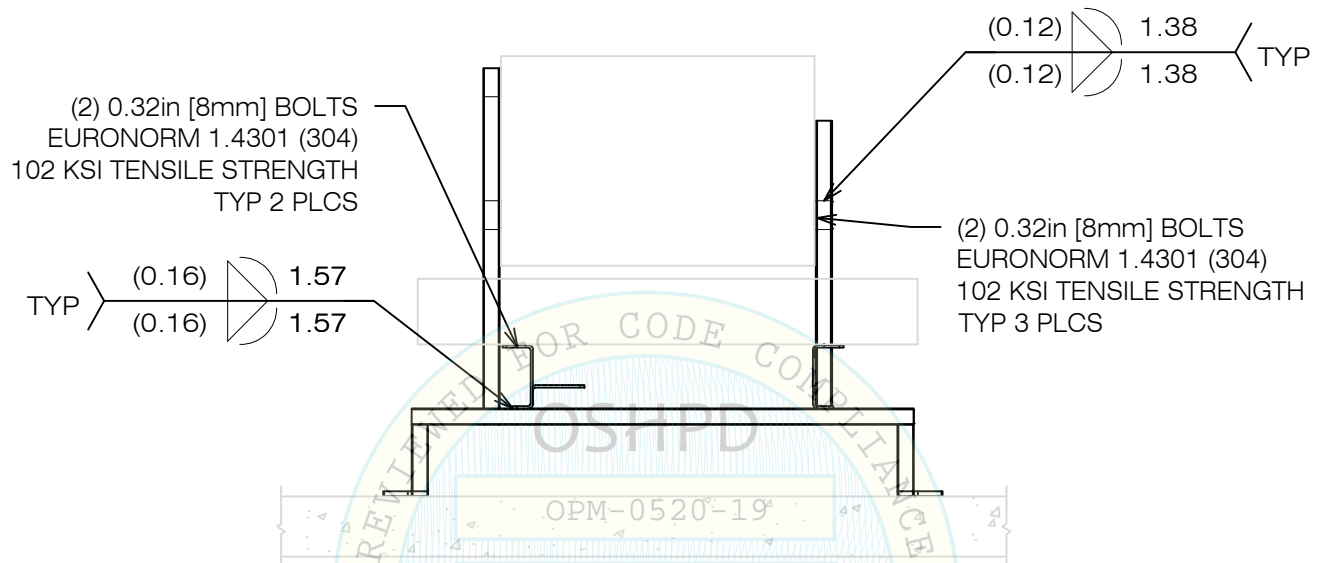


**A Division of Tomarco Contractor Specialties
International Seismic Application Technology**
1020 Crews Road, Suite Q, Matthews, NC 28105
704-841-4080 www.isatsb.com



| | |
|-------------------------|---------------------------|
| DRAWN BY: WVJ | |
| DATE: 01/01/2021 | |
| REVISED BY: KJC | |
| DATE: 04/08/2021 | |
| REV NO: 4 | |
| SCALE N.T.S. | PAGE ELD45 ELEV |

OSHDP OPM-0520 DWG - 9



BY: H ELEVATION VIEW

DATE: 06/30/2021

OPM-0520 BELIMED ELD 45, WTD 45 STEAM GENERATOR/EXCHANGER



**A Division of Tomarco Contractor Specialties
International Seismic Application Technology**
1020 Crews Road, Suite Q, Matthews, NC 28105
704-841-4080 www.isatsb.com



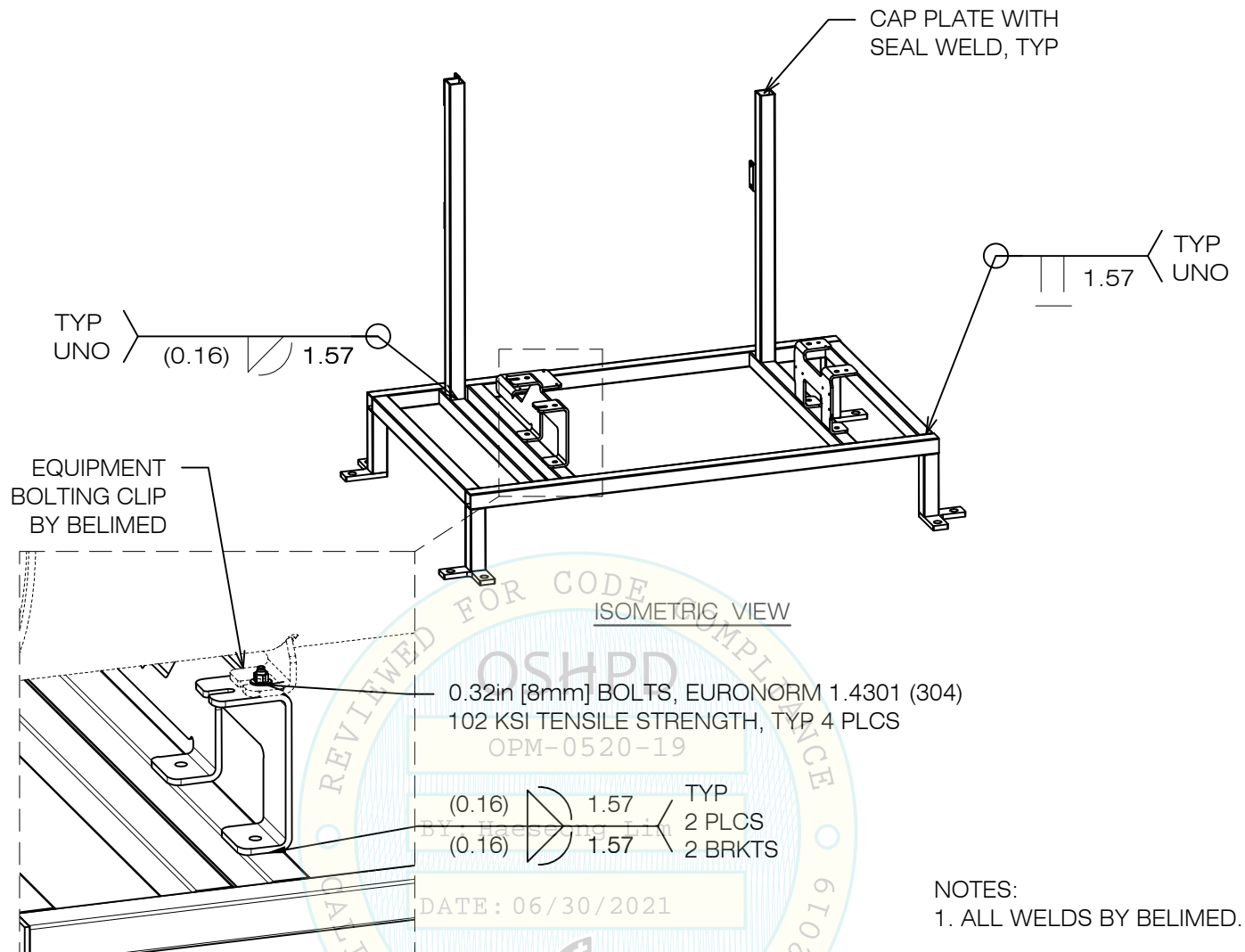
DRAWN BY: WVJ
DATE: 01/01/2021

REVISED BY: KJC
DATE: 04/08/2021
REV NO: 4

SCALE
N.T.S.

PAGE
ELD45 CONN

OSHDP OPM-0520 DWG - 10



OPM-0520 BELIMED ELD 45, WTD 45 STEAM GENERATOR/EXCHANGER



**A Division of Tomarco Contractor Specialties
International Seismic Application Technology**
1020 Crews Road, Suite Q, Matthews, NC 28105
704-841-4080 www.isatsb.com



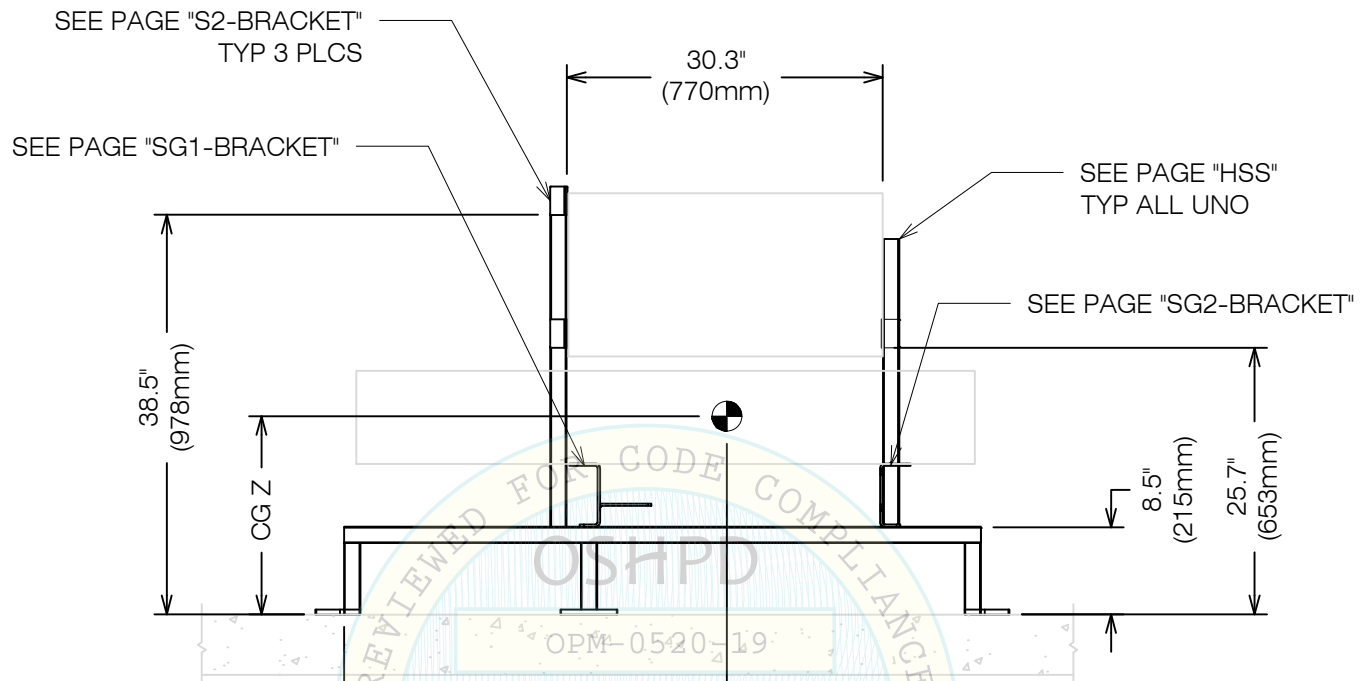
DRAWN BY: WVJ
DATE: 01/01/2021

REVISED BY: KJC
DATE: 04/08/2021
REV NO: 4

SCALE
N.T.S.

PAGE
ELD45 WELD

OSHPD OPM-0520 DWG - 11



BY: Haeseong Lim

ELEVATION VIEW

DATE: 06/30/2021

OPM-0520 BELIMED ELD 60, WTD 60, STEAM GENERATOR/EXCHANGER



**A Division of Tomarco Contractor Specialties
International Seismic Application Technology**
1020 Crews Road, Suite Q, Matthews, NC 28105
704-841-4080 www.isatsb.com



DRAWN BY: WVJ
DATE: 01/01/2021

REVISED BY: KJC
DATE: 04/08/2021
REV NO: 4

SCALE
N.T.S.

PAGE
ELD60 ELEV

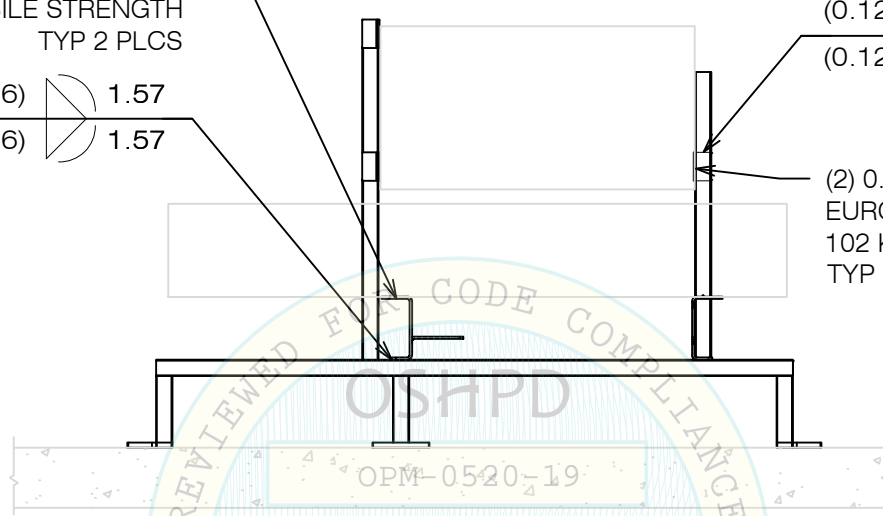
OSHPD OPM-0520 DWG - 13

(2) 0.32in [8mm] BOLTS
EURONORM 1.4301 (304)
102 KSI TENSILE STRENGTH
TYP 2 PLCS

TYP (0.16) 1.57
(0.16) 1.57

(0.12) 1.38
(0.12) 1.38 TYP

(2) 0.32in [8mm] BOLTS
EURONORM 1.4301 (304)
102 KSI TENSILE STRENGTH
TYP 3 PLCS



OPM-0520 BELIMED ELD 60, WTD 60, STEAM GENERATOR/EXCHANGER



A Division of Tomarco Contractor Specialties
International Seismic Application Technology
1020 Crews Road, Suite Q, Matthews, NC 28105
704-841-4080 www.isatsb.com



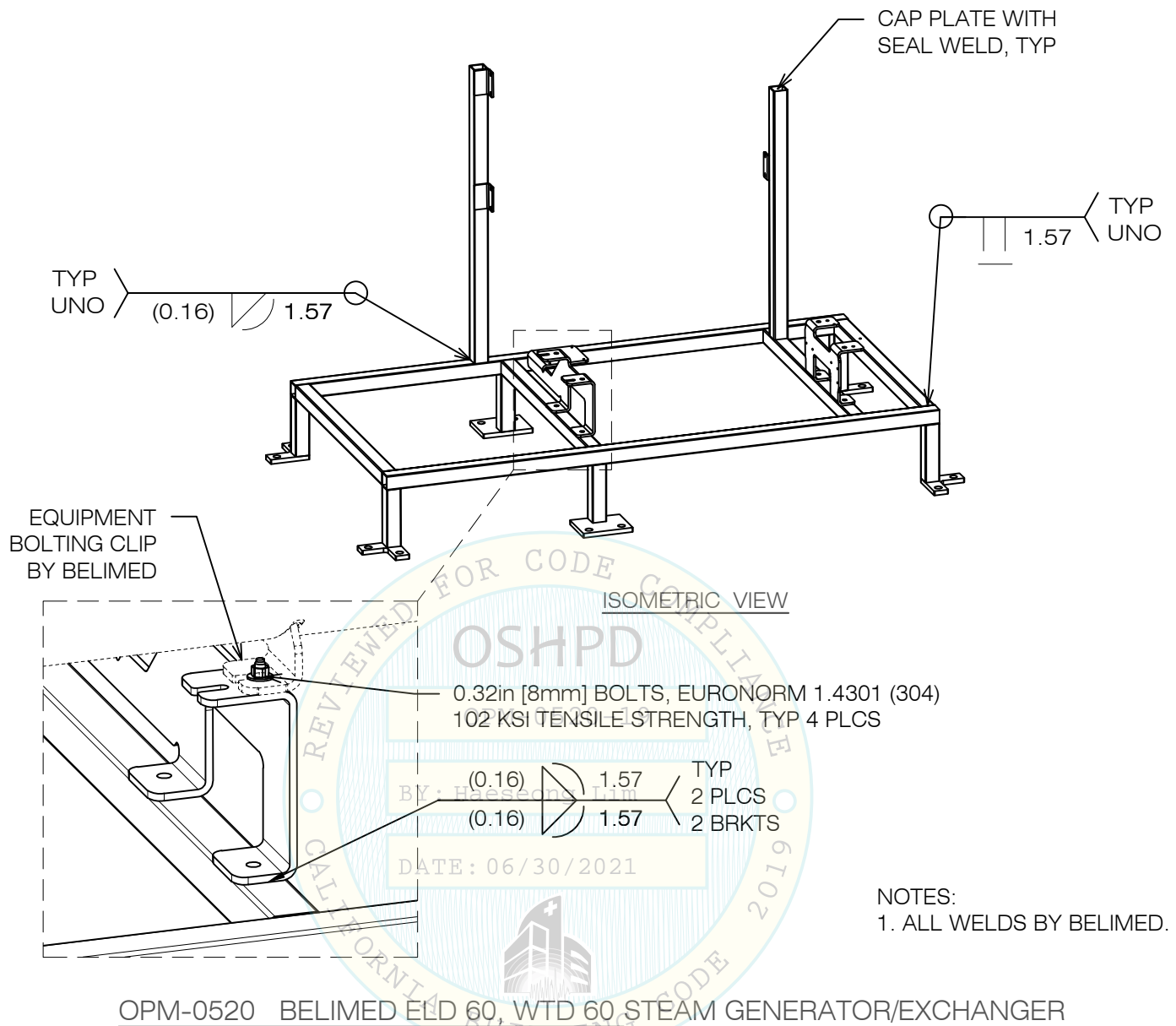
DRAWN BY: WVJ
DATE: 01/01/2021

REVISED BY: KJC
DATE: 04/08/2021
REV NO: 4

SCALE
N.T.S.

PAGE
ELD60 CONN

OSHPD OPM-0520 DWG - 14



OPM-0520 BELIMED ELD 60, WTD 60 STEAM GENERATOR/EXCHANGER



A Division of Tomarco Contractor Specialties
International Seismic Application Technology
1020 Crews Road, Suite Q, Matthews, NC 28105
704-841-4080 www.isatsb.com

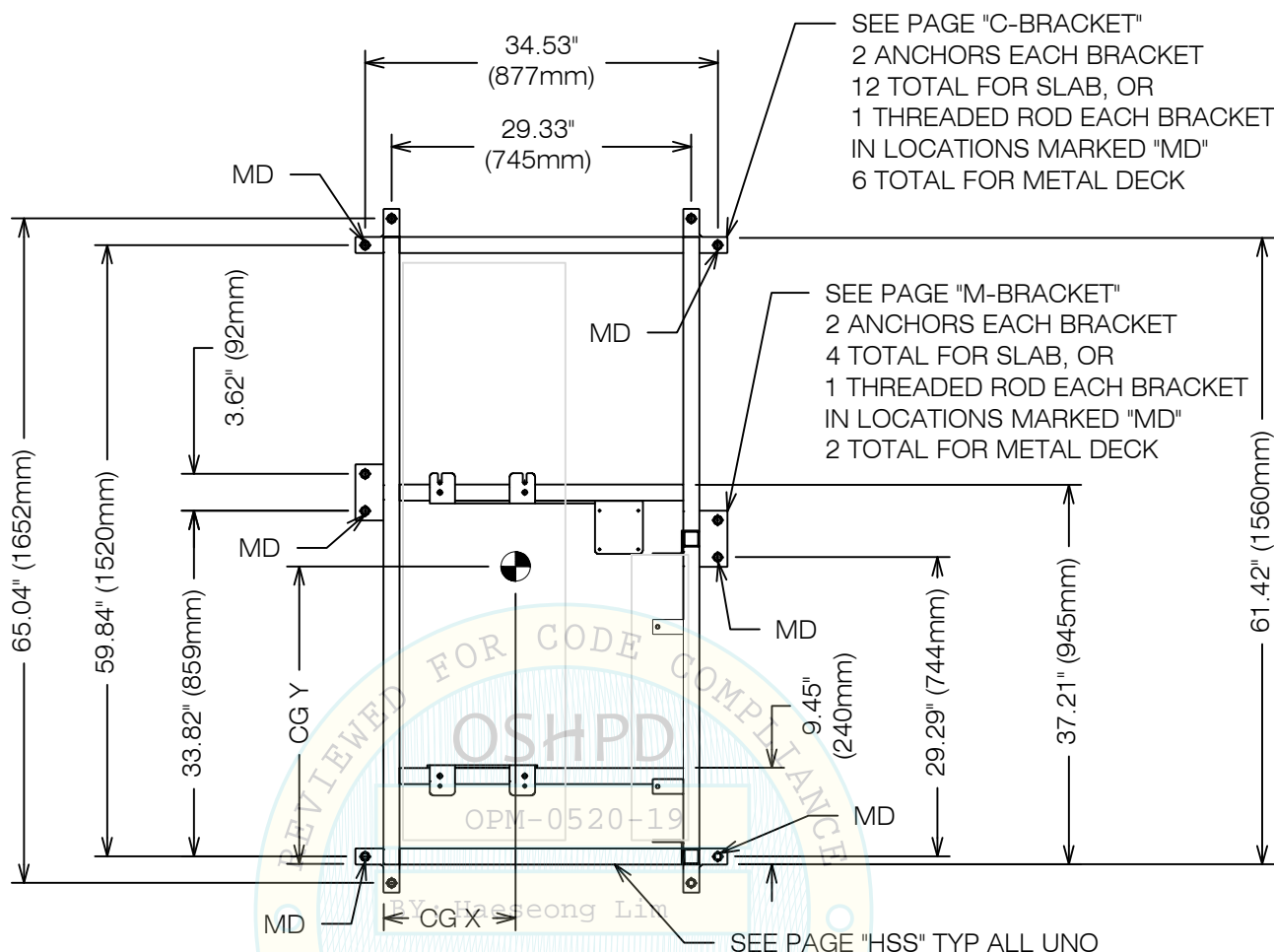


DRAWN BY: WVJ
DATE: 01/01/2021

REVISED BY: KJC
DATE: 04/08/2021
REV NO: 4

SCALE **PAGE**
N.T.S. ELD60 WELD

OSHPD OPM-0520 DWG - 15



PLAN VIEW
DATE: 06/30/2021

ANCHORS ARE BY INSTALLATION CONTRACTOR. SEE NOTE 8 ON PAGE "GEN NOTES". SEE PAGE "SOLID" FOR ANCHORS INTO SOLID CONCRETE AT GRADE OR ELEVATED AND PAGE "ELEVATED" FOR ANCHORS AT SLAB ON METAL DECK.

OPM-0520 BELIMED ELD 90, WTD 90, STEAM GENERATOR
FRAME LAYOUT AND ATTACHMENT PLAN



A Division of Tomarco Contractor Specialties
International Seismic Application Technology
1020 Crews Road, Suite Q, Matthews, NC 28105
704-841-4080 www.isatsb.com



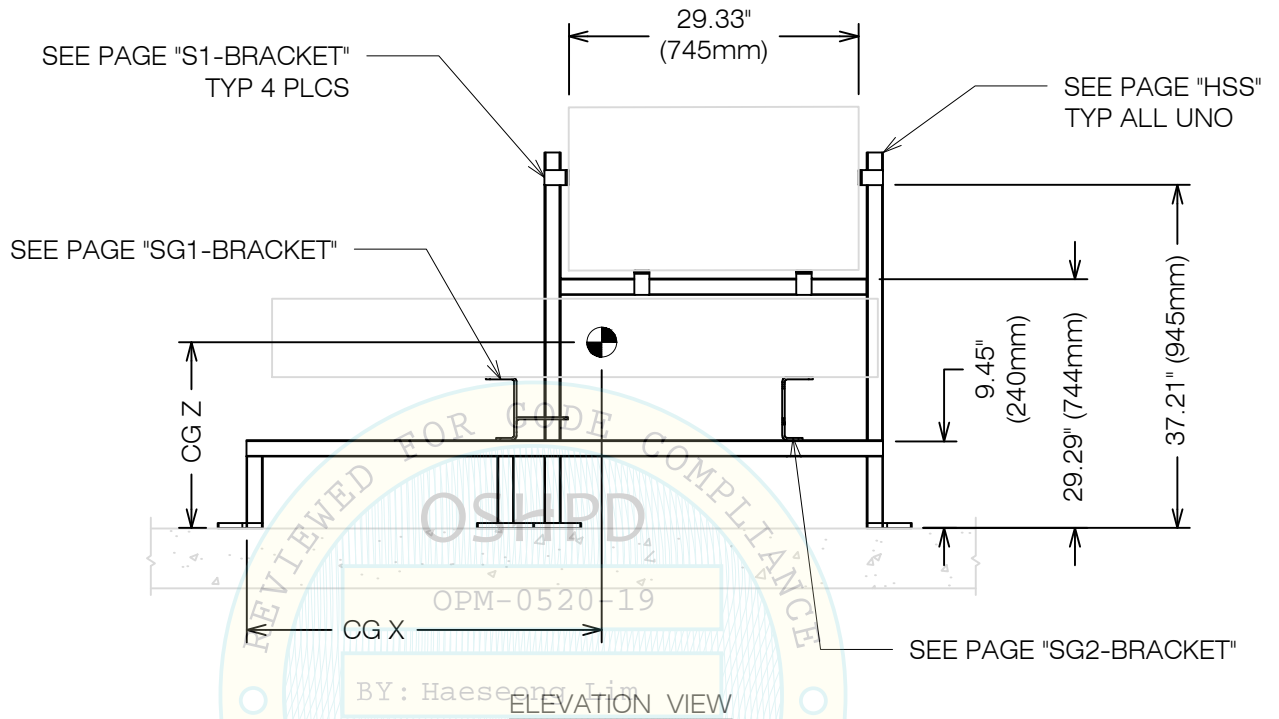
DRAWN BY: WVJ
DATE: 12/26/18

REVISED BY: KJC
DATE: 04/08/2021
REV NO: 4

SCALE
N.T.S.

PAGE
ELD90 PLAN

OSHPD OPM-0520 DWG - 16



OPM-0520 BELIMED ELD 90, WTD 90, STEAM GENERATOR



A Division of Tomarco Contractor Specialties
International Seismic Application Technology
 1020 Crews Road, Suite Q, Matthews, NC 28105
 704-841-4080 www.isatsb.com



DRAWN BY: WVJ
DATE: 12/26/18

REVISED BY: KJC
DATE: 04/08/2021
REV NO: 4

SCALE
 N.T.S.

PAGE
 ELD90 ELEV

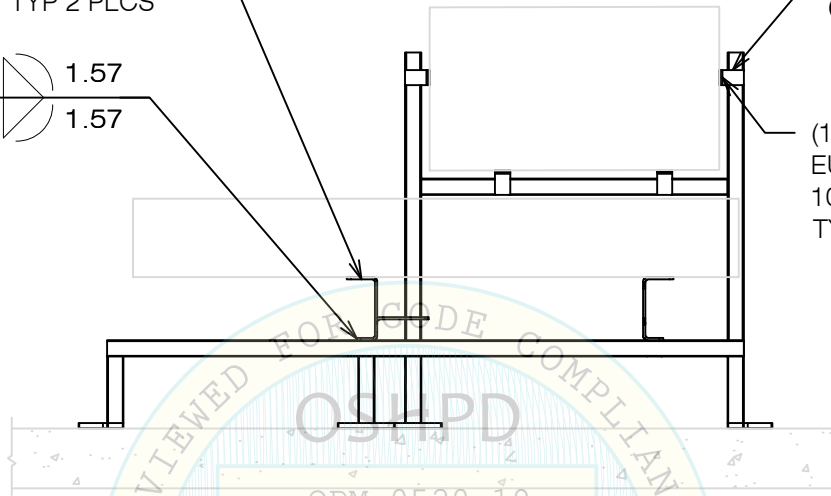
OSHPD OPM-0520 DWG - 17

(2) 0.32in [8mm] BOLTS
EURONORM 1.4301 (304)
102 KSI TENSILE STRENGTH
TYP 2 PLCS

TYP (0.16) 1.57
(0.16) 1.57

(0.12) 1.38
(0.12) 1.38 TYP

(1) 0.32in [8mm] BOLT
EURONORM 1.4301 (304)
102 KSI TENSILE STRENGTH
TYP 4 PLCS



OPM-0520-19

ELEVATION VIEW

BY: Haeseong Lim

DATE: 06/30/2021

OPM-0520 BELIMED ELD 90, WTD 90, STEAM GENERATOR



A Division of Tomarco Contractor Specialties
International Seismic Application Technology
1020 Crews Road, Suite Q, Matthews, NC 28105
704-841-4080 www.isatsb.com



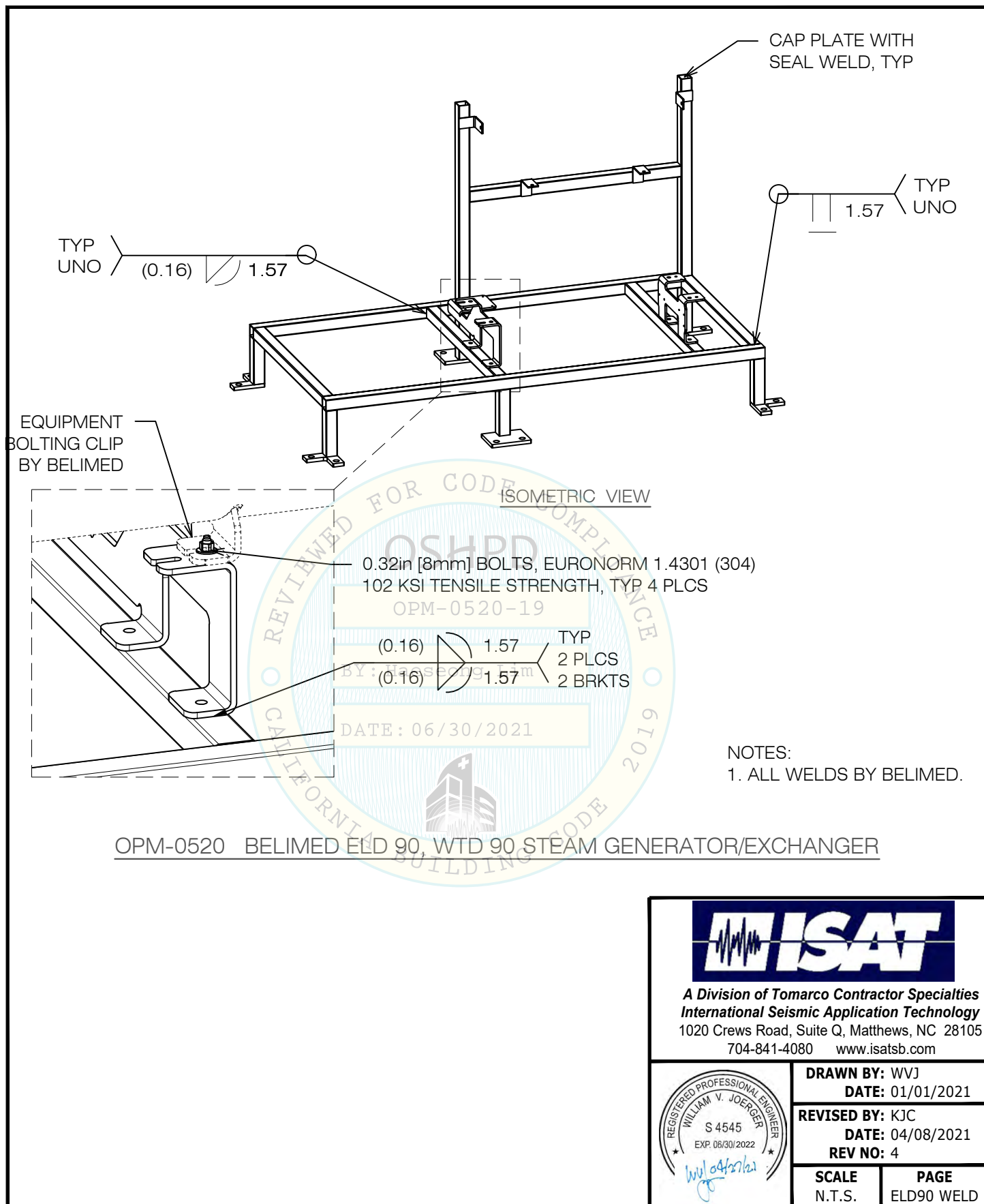
DRAWN BY: WVJ
DATE: 01/01/2021

REVISED BY: WVJ
DATE: 04/08/2021
REV NO: 4

SCALE
N.T.S.

PAGE
ELD90 CONN

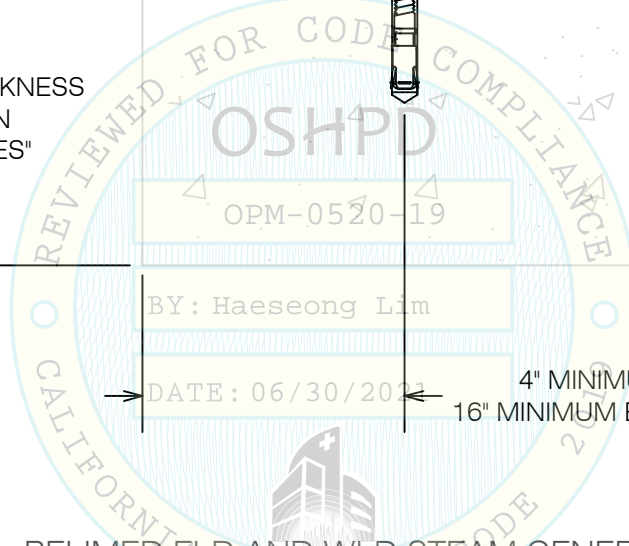
OSHPD OPM-0520 DWG - 18



OSHPD OPM-0520 DWG - 19

HILTI KWIK BOLT TZ ANCHOR SS 5/8" DIAMETER
 SEE NOTE 8 ON PAGE "GEN NOTES"
 3 1/8" MINIMUM EMBEDMENT AT GRADE
 4" MINIMUM EMBEDMENT AT ELEVATED SLABS

MINIMUM SLAB THICKNESS
 SEE NOTE 7 ON
 PAGE "GEN NOTES"



4" MINIMUM EDGE DISTANCE AT GRADE
 16" MINIMUM EDGE DISTANCE AT ELEVATED SLAB

OPM-0520 BELIMED ELD AND WLD STEAM GENERATOR/EXCHANGER
 EQUIPMENT ANCHORAGE AT SOLID CONCRETE SLAB AT GRADE OR ELEVATED



**A Division of Tomarco Contractor Specialties
 International Seismic Application Technology**
 1020 Crews Road, Suite Q, Matthews, NC 28105
 704-841-4080 www.isatsb.com



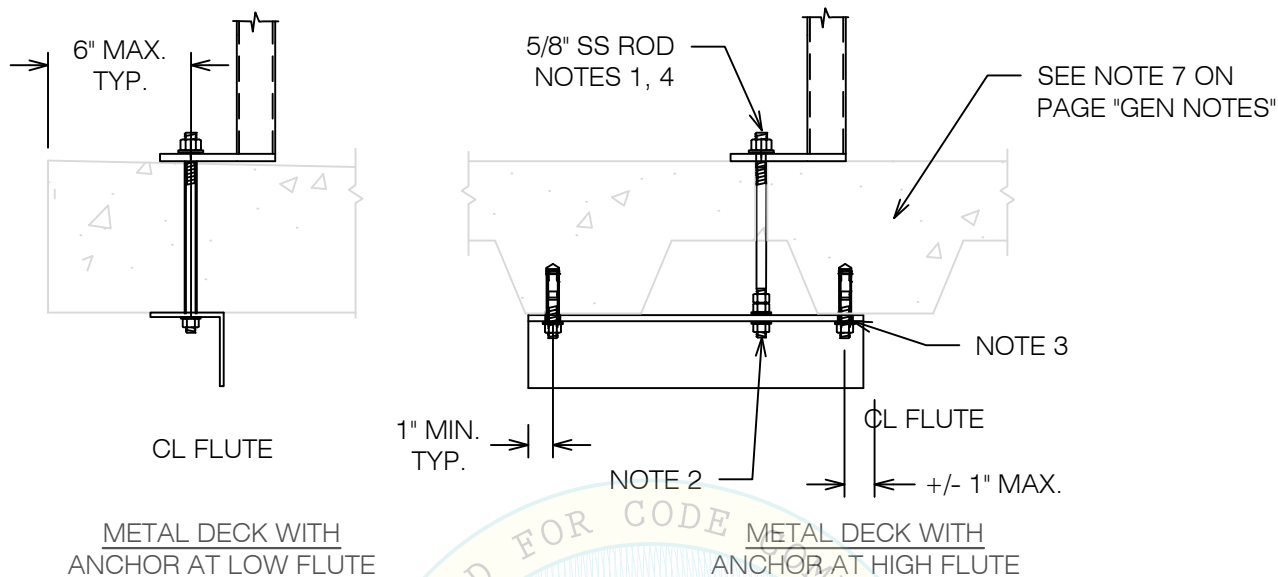
**DRAWN BY: WVJ
 DATE: 12/26/18**

**REVISED BY: KJC
 DATE: 04/08/2021
 REV NO: 4**

**SCALE
 N.T.S.**

**PAGE
 SOLID**

OSHPD OPM-0520 DWG - 20



NOTES:

1. DRILL 11/16" HOLE IN THE CONCRETE SLAB TO RECEIVE THE 5/8" ASTM F593 CW1 304 (Fy = 31.2 KSI) STAINLESS STEEL RODS WITH MATCHING WASHERS AND NUTS.
2. SUPPLEMENTAL ANGLE SHALL BE L3x3x1/4 ASTM A36 (Fy = 36 KSI). DRILL 11/16" HOLES IN ANGLE FOR EQUIPMENT THRU BOLT. HEX NUT TOP AND BOTTOM OF FLANGE (TYP). WHERE NUT CANNOT BE INSTALLED ON TOP OF LEG, PROVIDE TAPPED HOLE THROUGH LEG WITH NUT ON BOTTOM.
3. DRILL 9/16" HOLE IN ANGLE FOR 2 ANCHORS. ANCHOR INTO BOTTOM OF SLAB SHALL BE HILTI KWIK BOLT TZ 1/2", SEE NOTE 8 ON PAGE "GEN NOTES".
4. INSTALL ONLY 1 ANCHOR ROD IN EITHER OF THE AVAILABLE 2 HOLES IN BASEPLATE.

OPM-0520 BELIMED ELD AND WTD STEAM GENERATOR/EXCHANGER
ATTACHMENT DETAILS AT ELEVATED SLAB ON METAL DECK



**A Division of Tomarco Contractor Specialties
International Seismic Application Technology**
1020 Crews Road, Suite Q, Matthews, NC 28105
704-841-4080 www.isatsb.com



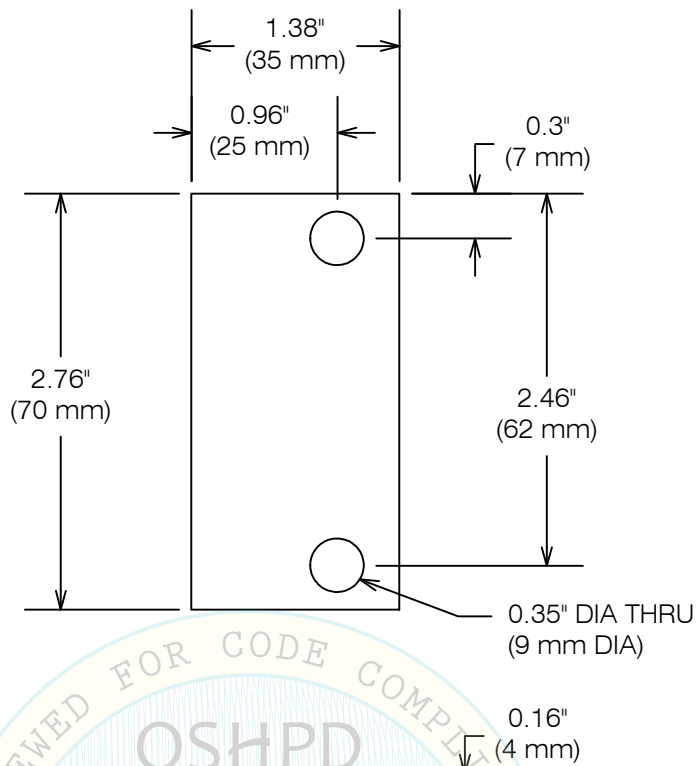
DRAWN BY: WVJ
DATE: 12/26/18

REVISED BY: KJC
DATE: 01/01/2021
REV NO: 3

SCALE
N.T.S.

PAGE
ELEVATED

OSHPD OPM-0520 DWG - 21



PART NO. 000-364-511 EN 1.4301 (304 SS STAINLESS STEEL Fy = 28 KSI)

OPM-0520 BELIMED ELD AND WTD SWITCH BRACKET



A Division of Tomarco Contractor Specialties
International Seismic Application Technology
 1020 Crews Road, Suite Q, Matthews, NC 28105
 704-841-4080 www.isatsb.com



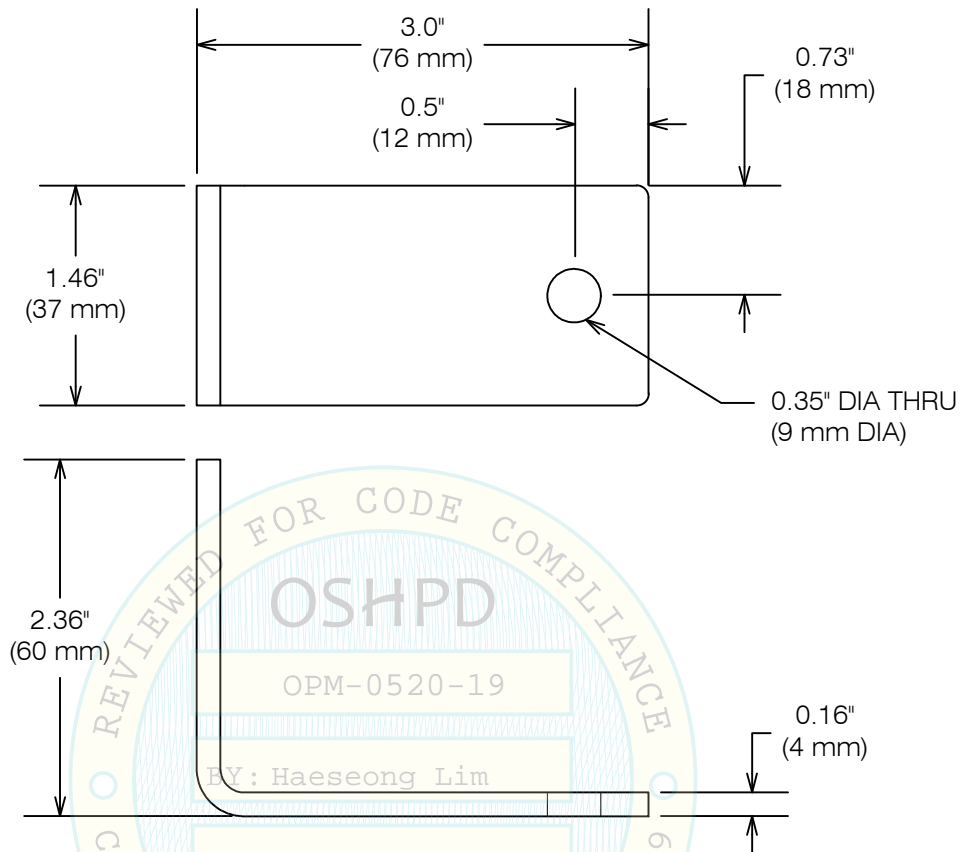
DRAWN BY: WVJ
DATE: 01/01/2021

REVISED BY: KJC
DATE: 01/01/2021
REV NO: 3

SCALE
 N.T.S.

PAGE
 S2-BRACKET

OSHPD OPM-0520 DWG - 22



PART NO. 000-364-656 EN 1.4301 (304 SS STAINLESS STEEL Fy = 28 KSI)

OPM-0520 BELIMED ELD AND WTD SWITCH BRACKET



A Division of Tomarco Contractor Specialties
International Seismic Application Technology
 1020 Crews Road, Suite Q, Matthews, NC 28105
 704-841-4080 www.isatsb.com

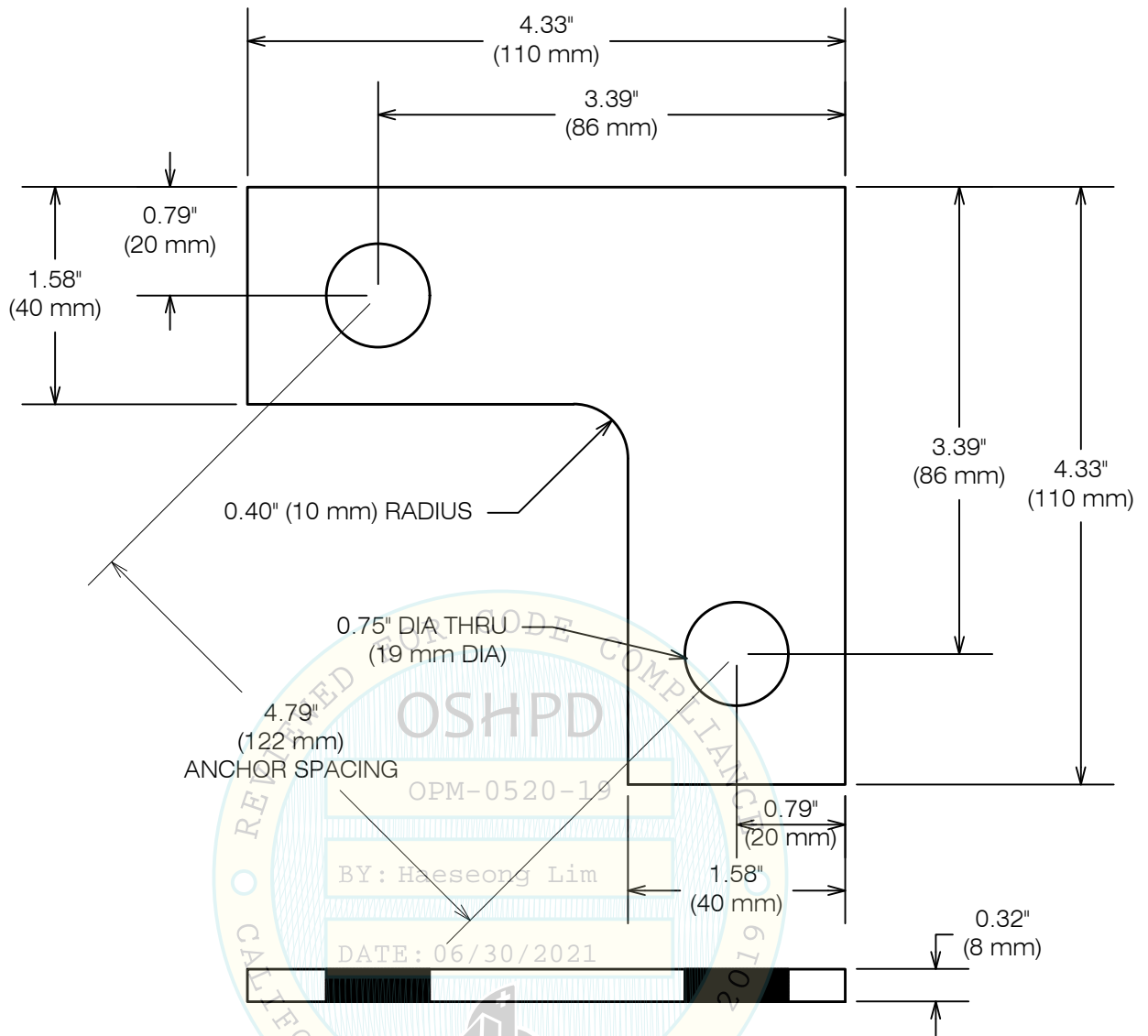


DRAWN BY: WVJ
DATE: 01/01/2021

REVISED BY: KJC
DATE: 01/01/2021
REV NO: 3

SCALE **PAGE**
 N.T.S. S1-BRACKET

OSHPD OPM-0520 DWG - 23



PART NO. 000-364-509 EN 1.4301 (304 SS STAINLESS STEEL Fy = 28 KSI)

OPM-0520 BELIMED ELD AND WTD CORNER BRACKET



A Division of Tomarco Contractor Specialties
International Seismic Application Technology
 1020 Crews Road, Suite Q, Matthews, NC 28105
 704-841-4080 www.isatsb.com



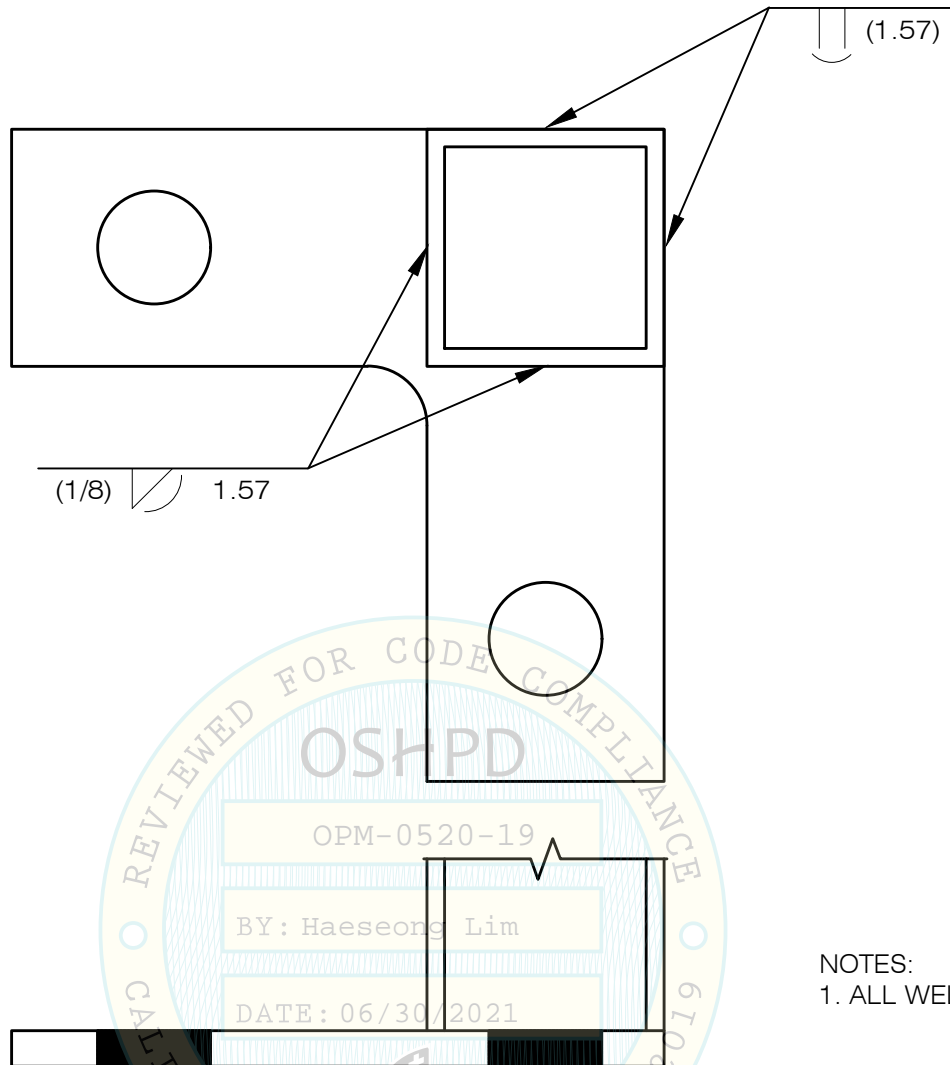
DRAWN BY: WVJ
DATE: 12/26/18

REVISED BY: KJC
DATE: 01/01/2021
REV NO: 3

SCALE
 N.T.S.

PAGE
 C-BRACKET

OSHPD OPM-0520 DWG - 24



NOTES:
1. ALL WELDS BY BELIMED.

PART NO. 000-364-509 EN 1.4301 (304 SS STAINLESS STEEL $F_y = 28$ KSI)

OPM-0520 BELIMED ELD AND WTD CORNER BRACKET WELD



A Division of Tomarco Contractor Specialties
International Seismic Application Technology
1020 Crews Road, Suite Q, Matthews, NC 28105
704-841-4080 www.isatsb.com



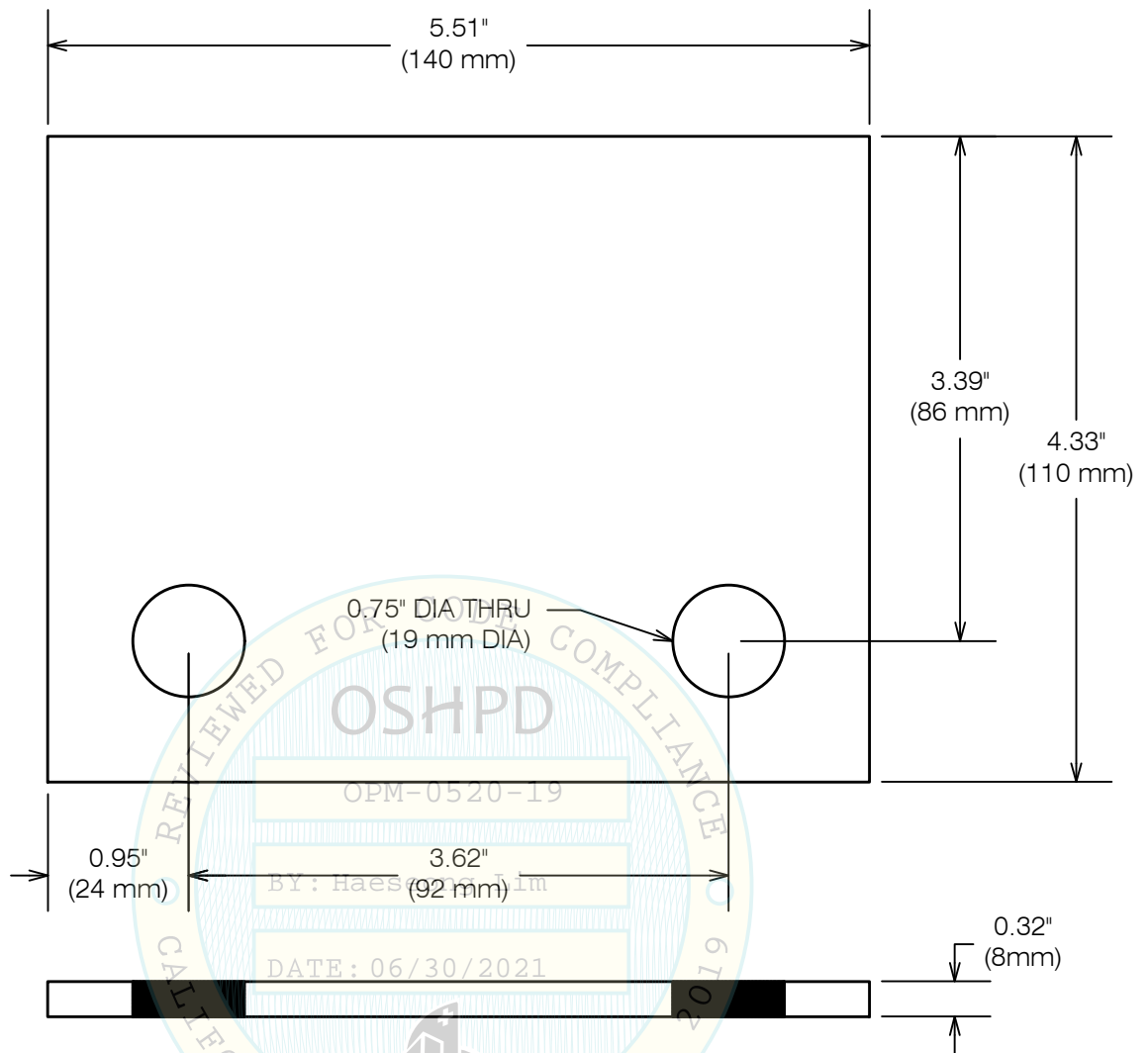
DRAWN BY: WVJ
DATE: 01/01/2021

REVISED BY: KJC
DATE: 01/01/2021
REV NO: 3

SCALE
N.T.S.

PAGE
CW-BRACKET

OSHPD OPM-0520 DWG - 25



PART NO. 000-364-509 EN 1.4301 (304 SS STAINLESS STEEL Fy = 28 KSI)

OPM-0520 BELIMED ELD AND WTD MIDDLE BRACKET



A Division of Tomarco Contractor Specialties
International Seismic Application Technology
 1020 Crews Road, Suite Q, Matthews, NC 28105
 704-841-4080 www.isatsb.com



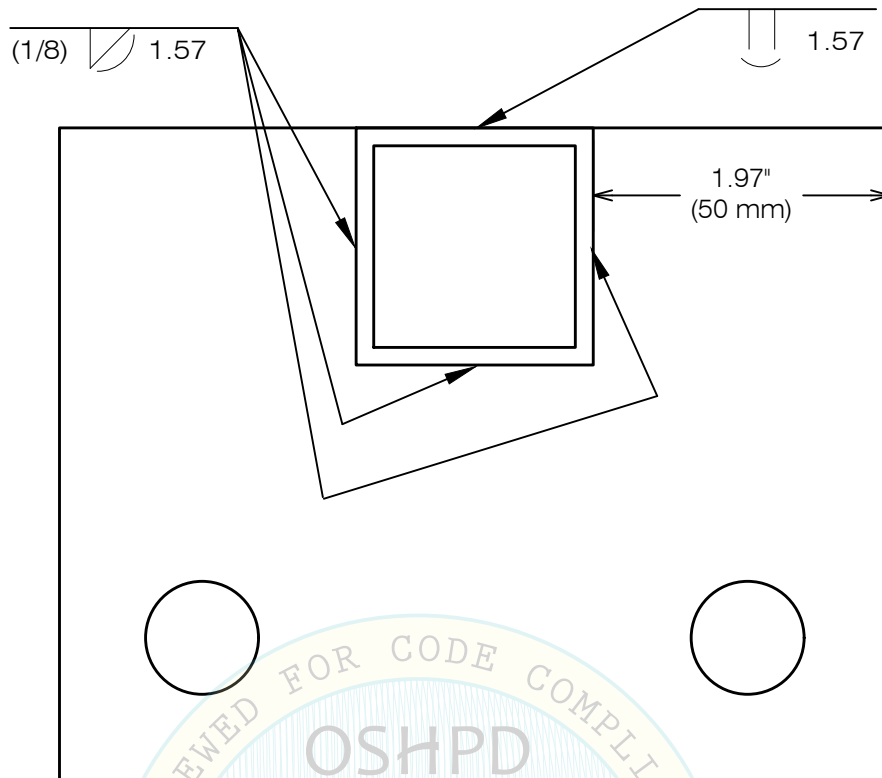
DRAWN BY: WVJ
DATE: 12/26/18

REVISED BY: KJC
DATE: 01/01/2021
REV NO: 3

SCALE
 N.T.S.

PAGE
 M-BRACKET

OSHPD OPM-0520 DWG - 26



OPM-0520-19

BY: Haeseong Lim

DATE: 06/30/2021

NOTES:

1. ALL WELDS BY BELIMED.



PART NO. 000-365-3471 EN 1.4301 (304 SS STAINLESS STEEL $F_y = 28$ KSI)

OPM-0520 BELIMED ELD AND WTD MIDDLE BRACKET WELD



A Division of Tomarco Contractor Specialties
International Seismic Application Technology
 1020 Crews Road, Suite Q, Matthews, NC 28105
 704-841-4080 www.isatsb.com



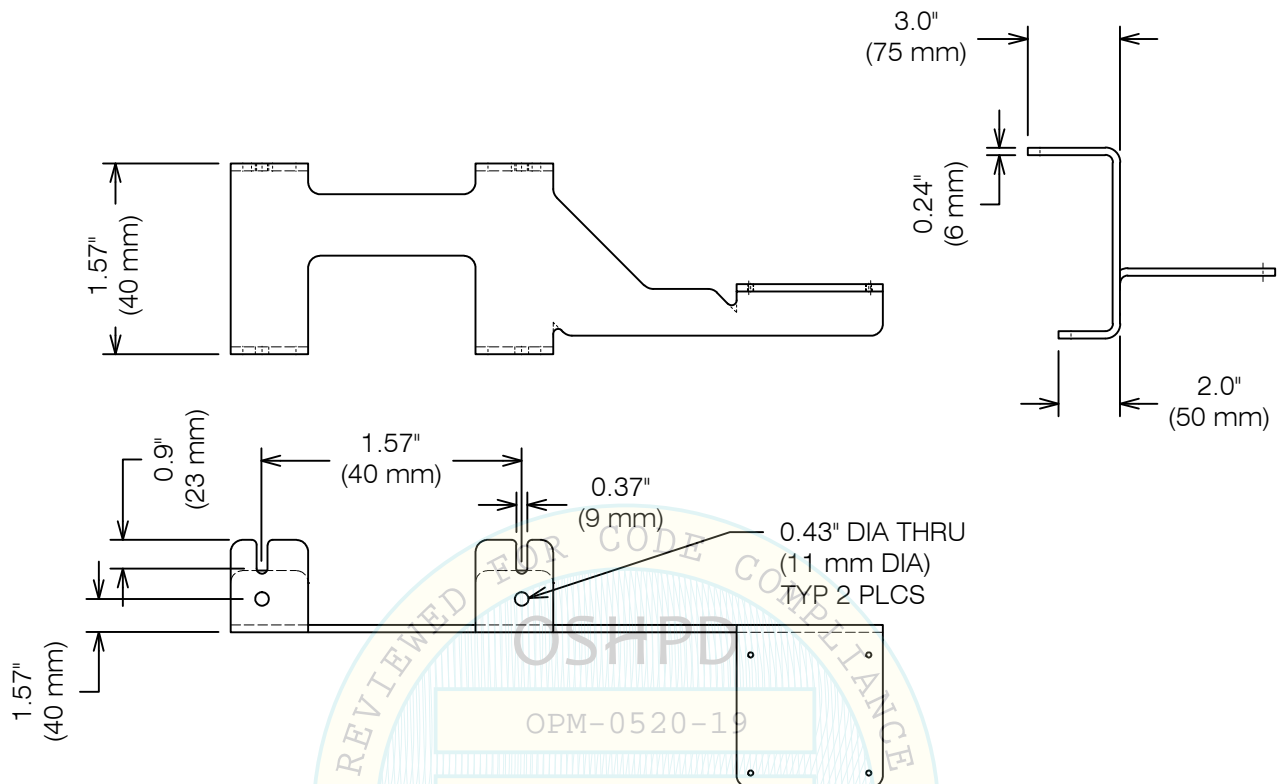
DRAWN BY: WVJ
DATE: 01/01/2021

REVISED BY: KJC
DATE: 01/01/2021
REV NO: 3

SCALE
 N.T.S.

PAGE
 MW-BRACKET

OSHPD OPM-0520 DWG - 27



PART NO. 000-277-290 EN 1.4301 (304 SS STAINLESS STEEL Fy = 28 KSI)

OPM-0520 BELIMED ELD AND WTD SG BRACKET

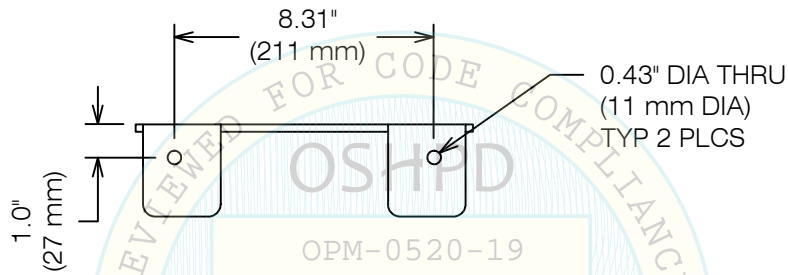
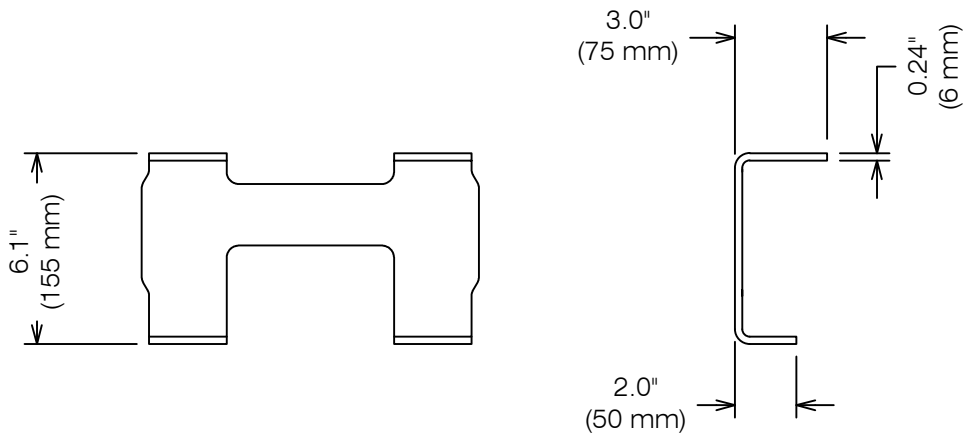


**A Division of Tomarco Contractor Specialties
International Seismic Application Technology**
1020 Crews Road, Suite Q, Matthews, NC 28105
704-841-4080 www.isatsb.com



| | |
|-------------------------|----------------------------|
| DRAWN BY: WVJ | |
| DATE: 01/01/2021 | |
| REVISED BY: WVJ | |
| DATE: 01/01/2021 | |
| REV NO: 3 | |
| SCALE N.T.S. | PAGE SG1 BRACKET |

OSHPD OPM-0520 DWG - 28



PART NO. 000-264-628 EN 1.4301 (304 SS STAINLESS STEEL $F_y = 28$ KSI)

OPM-0520 BELIMED ELD AND WTD SG BRACKET



**A Division of Tomarco Contractor Specialties
International Seismic Application Technology**
1020 Crews Road, Suite Q, Matthews, NC 28105
704-841-4080 www.isatsb.com

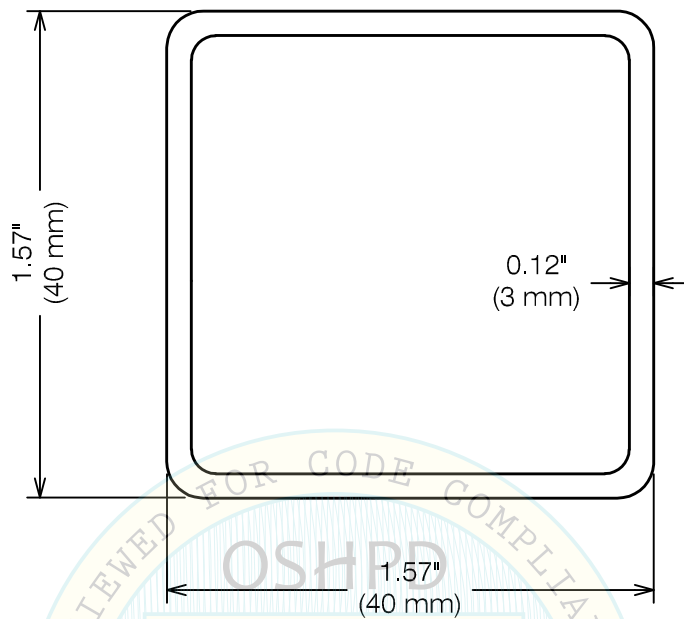


DRAWN BY: WVJ
DATE: 01/01/2021

REVISED BY: KJC
DATE: 01/01/2021
REV NO: 3

SCALE N.T.S. **PAGE** SG2 BRACKET

OSHPD OPM-0520 DWG - 29



OPM-0520-19

BY: Haeseong Lim

SEE PAGE "PART NUMBER" FOR INDIVIDUAL PART NUMBERS

AREA = 0.688 in² DATE: 06/30/2021

ELASTIC SECTION MODULUS = 0.311 in³

MOMENT OF INERTIA = 0.245 in⁴

OPM-0520 BELIMED ELD AND WTD HSS



A Division of Tomarco Contractor Specialties
International Seismic Application Technology
 1020 Crews Road, Suite Q, Matthews, NC 28105
 704-841-4080 www.isatsb.com



DRAWN BY: WVJ
DATE: 01/01/2021

REVISED BY: KJC
DATE: 04/08/2021
REV NO: 4

SCALE
 N.T.S.

PAGE
 HSS

OSHPD OPM-0520 DWG - 30

| BELIMED ELD/WTD STEAM GENERATOR/STEAM EXCHANGER PART NUMBERS | | | | |
|--|------------------------|------------------------|----------------|-----------|
| PART NO | DESCRIPTION | MATERIAL SPECIFICATION | YIELD STRENGTH | THICKNESS |
| 000-364-511 | SWITCH BRACKET, 2 HOLE | EN 1.4301 | 28 KSI | 0.16 in |
| 000-364-656 | SWITCH BRACKET, 1 HOLE | EN 1.4301 | 28 KSI | 0.16 in |
| 000-364-509 | CORNER ANCHOR BRACKET | EN 1.4301 | 28 KSI | 0.32 in |
| 000-365-347 | MIDDLE ANCHOR BRACKET | EN 1.4301 | 28 KSI | 0.32 in |
| 000-277-290 | SG BRACKET 1 | EN 1.4301 | 28 KSI | 0.24 in |
| 000-264-628 | SG BRACKET 2 | EN 1.4301 | 28 KSI | 0.24 in |
| 000-364-461 | 40x40x167 | EN 1.4301 | 28 KSI | 0.12 in |
| 000-364-462 | 40x40x1230 | EN 1.4301 | 28 KSI | 0.12 in |
| 000-364-460 | 40x40x705 | EN 1.4301 | 28 KSI | 0.12 in |
| 000-364-622 | 40x40x855 | EN 1.4301 | 28 KSI | 0.12 in |
| 000-364-641 | 40x40x1560 | EN 1.4301 | 28 KSI | 0.12 in |
| 000-364-652 | 40x40x750 | EN 1.4301 | 28 KSI | 0.12 in |
| 000-365-396 | 40x40x822.5 | EN 1.4301 | 28 KSI | 0.12 in |
| 000-365-411 | 40x40x833.5 | EN 1.4301 | 28 KSI | 0.12 in |

OPM-0520 BELIMED PART NUMBER SUMMARY

DATE: 06/30/2021



A Division of Tomarco Contractor Specialties
International Seismic Application Technology
 1020 Crews Road, Suite Q, Matthews, NC 28105
 704-841-4080 www.isatsb.com



DRAWN BY: WVJ
DATE: 01/01/2021

REVISED BY: KJC
DATE: 04/08/2021
REV NO: 4

SCALE
 N.T.S.

PAGE
 PART NO

OSHPD OPM-0520 DWG - 31