



OFFICE OF STATEWIDE HEALTH PLANNING AND DEVELOPMENT
FACILITIES DEVELOPMENT DIVISION

APPLICATION FOR OSHPD PREAPPROVAL OF
MANUFACTURER'S CERTIFICATION (OPM)

OFFICE USE ONLY

APPLICATION #: OPM-0588

OSHPD Preapproval of Manufacturer's Certification (OPM)

Type: [X] New [] Renewal/Update

Manufacturer Information

Manufacturer: Steris Corporation

Manufacturer's Technical Representative: Zach Miday

Mailing Address: 5900 Heisley Rd., Mentor, OH 44060

Telephone: (440) 392-7688

Email: Zach_Miday@steris.com

Product Information

Product Name: AMSCO 600 Series Pass-Through Sterilizers

Product Type: Other Electrical & Mechanical Components

Product Model Number: 26"x26" Door: 6 STU/39", 8 STU/51", 10 STU/63", 12 STU/75" & 26"x37.5" Door: 9 STU/42", 12 STU/54", 15 STU/66"

General Description: Sterilizer used to sanitize medical instruments, gowns etc between soiled & clean rooms

Applicant Information

Applicant Company Name: EASE LLC.

Contact Person: Tiffany Tonn

Mailing Address: 1515 FAIRVIEW AVE, STE 205, MISSOULA, MT 59801

Telephone: (406) 541-3273

Email: tiffany@easeco.com

Title:

Access to Safe, Quality Healthcare Environments that Meet California's Diverse and Dynamic Needs

STATE OF CALIFORNIA - HEALTH AND HUMAN SERVICES AGENCY





OFFICE OF STATEWIDE HEALTH PLANNING AND DEVELOPMENT FACILITIES DEVELOPMENT DIVISION

Registered Design Professional Preparing Engineering Recommendations

Company Name: EASE LLC

Name: Kevin Paul Burke

California License Number: CE57152

Mailing Address: 5877 Pine Ave., Suite 210, Chino Hills, CA 91709

Telephone: (909) 606-7622

Email: kevin@easeco.com

OSHPD Special Seismic Certification Preapproval (OSP)

Special Seismic Certification is preapproved under OSP

OSP Number: _____

Certification Method

Testing in accordance with: ICC-ES AC156 FM 1950-16

Other(s) (Please Specify): _____

*Use of criteria other than those adopted by the California Building Standards Code, 2019 (CBSC 2019) for component supports and attachments are not permitted. For distribution system, interior partition wall, and suspended ceiling seismic bracings, test criteria other than those adopted in the CBSC 2019 may be used when approved by OSHPD prior to testing.

Analysis

Experience Data

Combination of Testing, Analysis, and/or Experience Data (Please Specify): _____

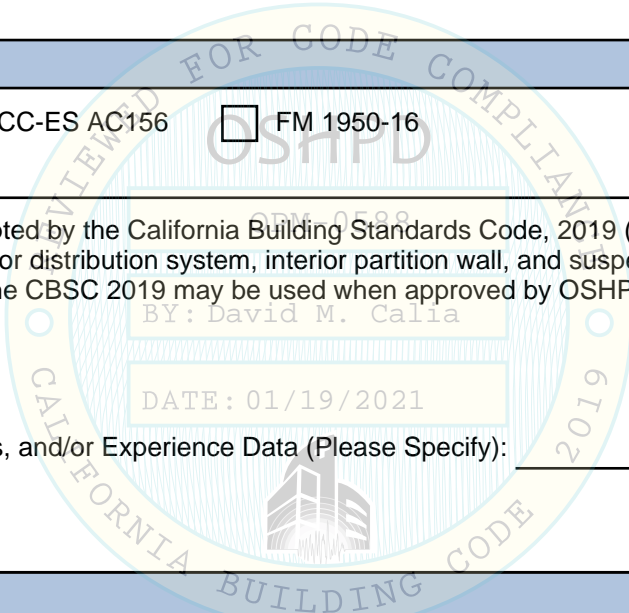
OSHPD Approval

Date: 1/19/2021

Name: David Calia

Title: Senior Structural Engineer

Condition of Approval (if applicable): _____





**EQUIPMENT ANCHORAGE
& SEISMIC ENGINEERING**

5877 Pine Ave, Ste. 210
Chino Hills, CA. 91709
Phn: (909) 606-7622

Office of Statewide Health Planning and Development
PREAPPROVAL OF MANUFACTURER'S CERTIFICATION
OPM-0588

THIS PREAPPROVAL CONFORMS TO THE 2019 CALIFORNIA BUILDING CODE

MANUFACTURER: **STERIS CORPORATION**
EQUIPMENT NAME: **AMSCO 600 PASSTHROUGH CHAMBER**

Sheet: 1 of 12
Date: 1/13/21

GENERAL NOTES

1. THIS OSHPD PREAPPROVAL OF MANUFACTURER'S CERTIFICATION (OPM) IS BASED ON THE 2019 CBC. THE DEMANDS (DESIGN FORCES) FOR USE WITH THIS OPM SHALL BE BASED ON THE 2019 CBC
2. THIS DOCUMENT MAY ONLY BE USED WITH THE EXPRESS WRITTEN CONSENT OF THE MANUFACTURER LISTED ABOVE FOR THE SPECIFIC PROJECT SITE AND INSTALLATION LOCATION. THIS DOCUMENT IS INVALID WITHOUT SUCH CONSENT.
3. THIS PREAPPROVAL CONFORMS TO THE 2019 CALIFORNIA BUILDING CODE WHERE S_{ds} IS NOT GREATER THAN 1.90 & 2.30. SEE DETAIL FOR APPLICABILITY
4. FORCES PER ASCE 7-16 SECTION 13.3.1, EQUATIONS 13.3-1, 13.3-2 & 13.3-3,
WHERE $S_{ds} = 2.30$, $a_p = 1.0$, $I_p = 1.5$, $R_p = 1.0$, $z/h = 0$ AT CONCRETE SLAB .
WHERE $S_{ds} = 1.90$, $a_p = 1.0$, $I_p = 1.5$, $R_p = 1.0$, $z/h \leq 1$ AT CONCRETE SLAB ON METAL DECK SEE FOLLOWING SHEETS FOR Ω .
5. THIS PREAPPROVAL COVERS ONLY THE SUPPORTS AND ATTACHMENTS OF THE EQUIPMENT TO THE STRUCTURE.
6. ALL DESIGN FORCES SHOWN ON THE DRAWINGS ARE FACTORED LOADS THAT SHALL BE USED FOR STRENGTH DESIGN.
7. CONCRETE SLAB ON METAL DECK DETAIL VALID FOR DEMANDS SHOWN AT ANY ELEVATION IN THE BUILDING. (i.e. $z/h \leq 1$)
8. CONCRETE SLAB DETAIL VALID FOR DEMANDS SHOWN AT OR BELOW GRADE. (i.e. $z/h = 0$)

9. RESPONSIBILITIES OF THE STRUCTURAL ENGINEER OF RECORD OF THE BUILDING

- A. PROVIDE SUPPORTING STRUCTURE TO SUPPORT WEIGHTS AND FORCES SHOWN IN ADDITION TO ALL OTHER LOADS.
- B. VERIFY THAT THE INSTALLATION IS IN CONFORMANCE WITH THE 2019 CBC AND WITH THE DETAILS, MATERIAL AND GAGE OF THE UNIT WHERE ATTACHMENTS ARE MADE AGREE WITH THE INFORMATION SHOWN ON THE PREAPPROVAL DOCUMENTS.
- C. VERIFY THAT PROJECT SPECIFIC VALUES OF S_{ds} & z/h RESULT IN SEISMIC FORCES (E_h , E_v) THAT DO NOT EXCEED THE VALUES ON THE DETAILS.
- D. VERIFY THAT THE CONCRETE SLAB TO WHICH THE EQUIPMENT IS ANCHORED MEETS THE REQUIREMENTS OF THE APPLICABLE ICC ESR REPORT. AND THIS OPM.
- E. VERIFY THAT THE ANCHORS ARE AN ADEQUATE DISTANCE FROM ANY SLAB EDGES OR OPENINGS (SEE TYPICAL DETAIL ON SHEET 2).
- F. VERIFY THAT ALL NEW OR EXISTING ANCHORS ARE AN ADEQUATE DISTANCE FROM THE UNIT ATTACHMENTS AND CHECK FOR INTERACTION WHERE OTHER ANCHORS ARE WITHIN 18" OR $6h_{ef}$ FROM THIS UNIT'S ANCHORS.



STERIS CORPORATION

AMSCO 600 PASSTHROUGH CHAMBER

DES. **J. ROBERSON**

JOB NO. **14-2010**

DATE **1/13/21**

SHEET

2

OF **12** SHEETS

10. EXPANSION ANCHORS:

A. ATTACHMENT IS TO BE MADE WITH THE ANCHORS LISTED BELOW AND INSTALLED AS DESCRIBED IN THE CORRESPONDING ICC REPORT.

Anchor Diameter	Concrete Type	Min. f'c (psi)	Anchor Type	ICC Report No.	Min. Embed.	Min. Spacing	Min. Edge Dist.	Min. Conc. Thickness	Torque Test	Direct Tension Test
3/8"	Sand Light Weight	3000	Hilti Kwik Bolt TZ	ESR-1917	2"	6.75"	12"	See Detail "A"	25 FT-LB	N/A
1/2"	Normal Weight	3000	Hilti Kwik Bolt TZ	ESR-1917	2"	8"	12"	4"	40 FT-LB	1605 lb

B. THIS PREAPPROVAL ALLOWS FOR UP TO A MAXIMUM OF 2 ADJACENT CONCRETE SLAB EDGES, 12" AWAY MINIMUM (i.e. - CORNER). SEE ADJACENT DETAIL FOR ADDITIONAL MINIMUM ALLOWABLE CONCRETE EDGE DISTANCES.

C. TESTING AND SPECIAL INSPECTION OF EXPANSION ANCHORS SHALL BE PERFORMED BY AN APPROVED INDEPENDENT AGENCY EMPLOYED BY THE FACILITY OWNER PER CBC 1704A & 1910A.5 AND CAC 7-149. ALL REPORTS SHALL BE SENT TO THE INSPECTOR OF RECORD, OWNER AND THE ARCHITECT OR ENGINEER IN RESPONSIBLE CHARGE.

(i) AFTER AT LEAST 24 HOURS HAVE ELAPSED SINCE INSTALLATION, DIRECT PULL TENSION TEST OR TORQUE TEST AT LEAST 50% OF THE ANCHORS.

(ii) ACCEPTANCE CRITERIA:

- DIRECT TENSION TEST: THE ANCHOR SHOULD HAVE NO OBSERVABLE MOVEMENT AT THE TEST LOAD. A PRACTICAL WAY TO DETERMINE OBSERVABLE MOVEMENT IS THAT THE WASHER BECOMES LOOSE.
- TORQUE TEST: THE APPLICABLE TORQUE MUST BE ACHIEVED WITHIN THE FOLLOWING LIMITS: WEDGE TYPE : 1/2 TURN OF THE NUT

(iii) IF ANY ANCHOR FAILS, TEST ALL ANCHORS.

D. AVOID DAMAGING EXISTING STEEL REINFORCING IN CONCRETE SLAB WHEN INSTALLING CONCRETE EXPANSION ANCHORS.

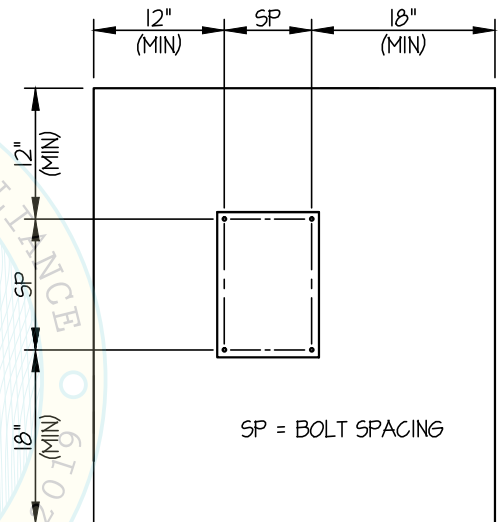
E. PROVIDE FOR FULL THREAD ENGAGEMENT OF NUT & WASHER.

11. BOLTS THROUGH CONCRETE ON METAL DECK

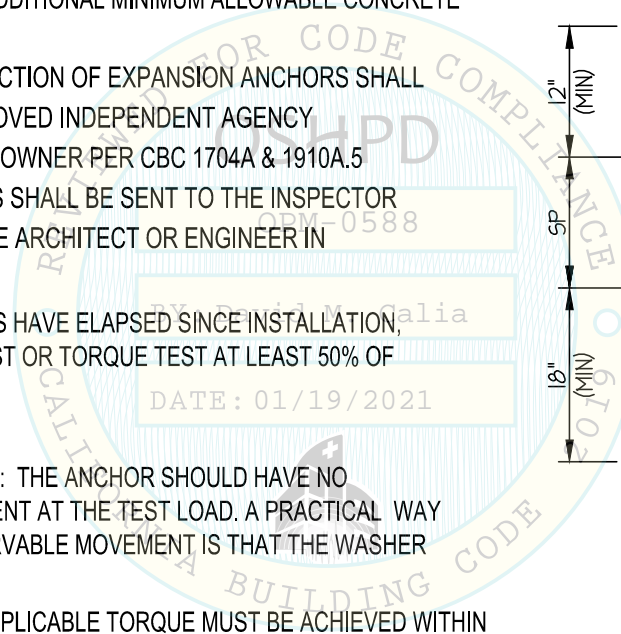
A. BOLTS SHALL BE TORQUED BY 3/4 TURN OF THE NUTS AFTER THE SNUG TIGHT (THE SNUG-TIGHT CONDITION IS DEFINED AS THE TIGHTNESS REQUIRED TO BRING THE CONNECTED PLIES INTO FIRM CONTACT) CONDITION IS ACHIEVED, UNLESS OTHERWISE NOTED.

B. THROUGH BOLT HOLES SHALL BE 1/16" LARGER THAN BOLT SIZE (HOLE SIZE = BOLT SIZE + 1/16) FOR CONCRETE.

C. THROUGH-BOLTS IN CONCRETE SHALL RECEIVE SPECIAL INSPECTION AND TESTING (THROUGH BOLTS WITH STEEL TO STEEL CONNECTION IN TENSION DO NOT REQUIRE TENSION TESTING) IN ACCORDANCE WITH REQUIREMENTS FOR POST-INSTALLED ANCHORS.



TYPICAL CONCRETE EDGE DETAIL



STERIS CORPORATION

DES. **J. ROBERSON**

SHEET

3

AMSCO 600 PASSTHROUGH CHAMBER

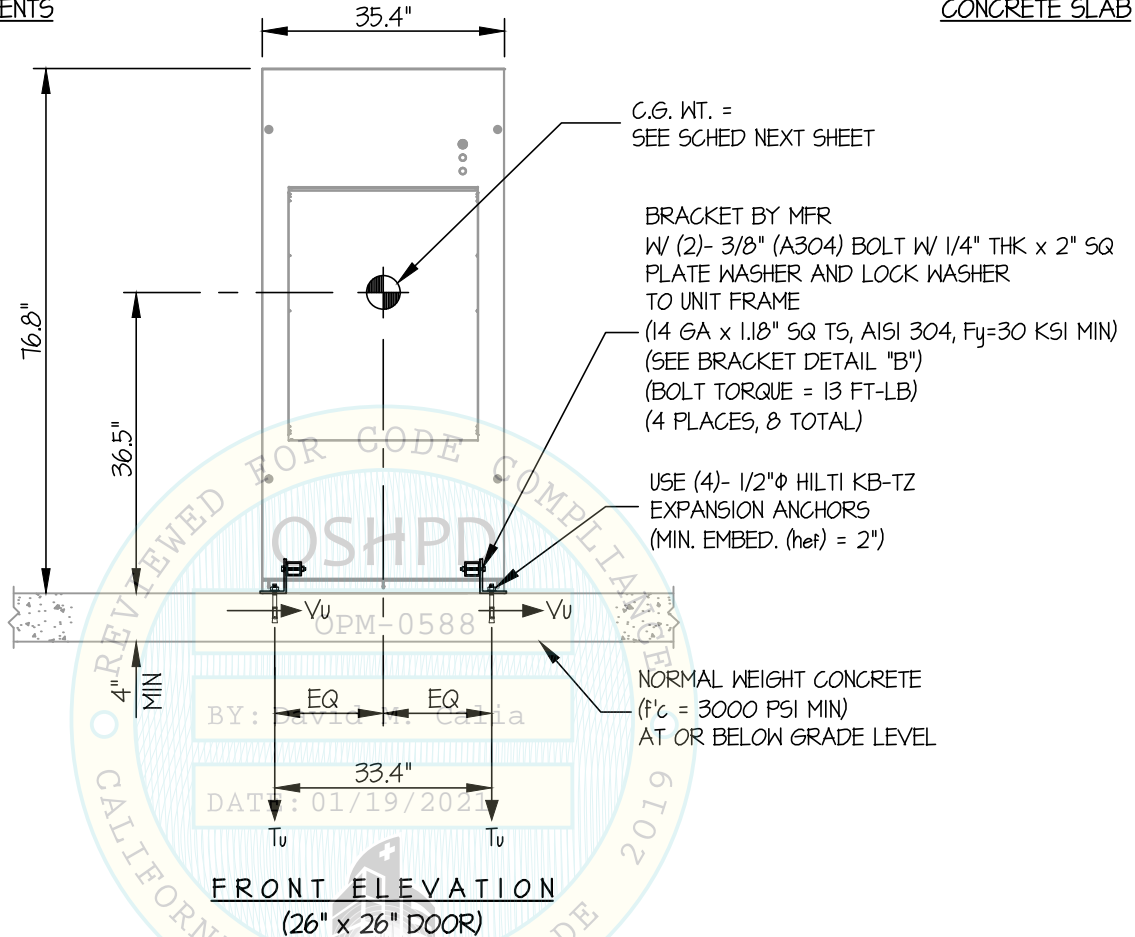
JOB NO. **14-2010**

DATE **1/13/21**

OF **12** SHEETS

SEISMIC SUPPORTS & ATTACHMENTS

CONCRETE SLAB



NOTES:

- FORCES ARE DETERMINED PER 2019 CALIFORNIA BUILDING CODE AND ASCE 7-16**

STRENGTH DESIGN IS USED. ($S_{Ds} = 2.30$, $a_p = 1.0$, $I_p = 1.5$, $R_p = 1.5$, $\Omega_o = 2.0$, $z/h = 0$)

HORIZONTAL FORCE (E_h) = $1.035 W_p$

HORIZONTAL FORCE (E_{mh}) = $2.07 W_p$ (FOR CONCRETE ANCHORAGE)

VERTICAL FORCE (E_v) = $0.46 W_p$

- CENTER OF GRAVITY (C.G.) AND WEIGHT ARE THE GOVERNING PARAMETERS FOR DESIGN. THIS PREAPPROVAL ENCOMPASSES ALL WEIGHTS UP TO THE MAXIMUM WEIGHT SHOWN.
- STRUCTURAL ENGINEER OF RECORD FOR THE BUILDING SHALL PROVIDE SUPPORT STRUCTURE DESIGNED TO SUPPORT WEIGHTS AND FORCES SHOWN IN COMBINATION WITH ALL OTHER LOADS THAT MAY BE PRESENT.
- SEE GENERAL NOTES: SHEET 1 AND 2.



STERIS CORPORATION

AMSCO 600 PASSTHROUGH CHAMBER

DES. J. ROBERSON

JOB NO. 14-2010

DATE 1/13/21

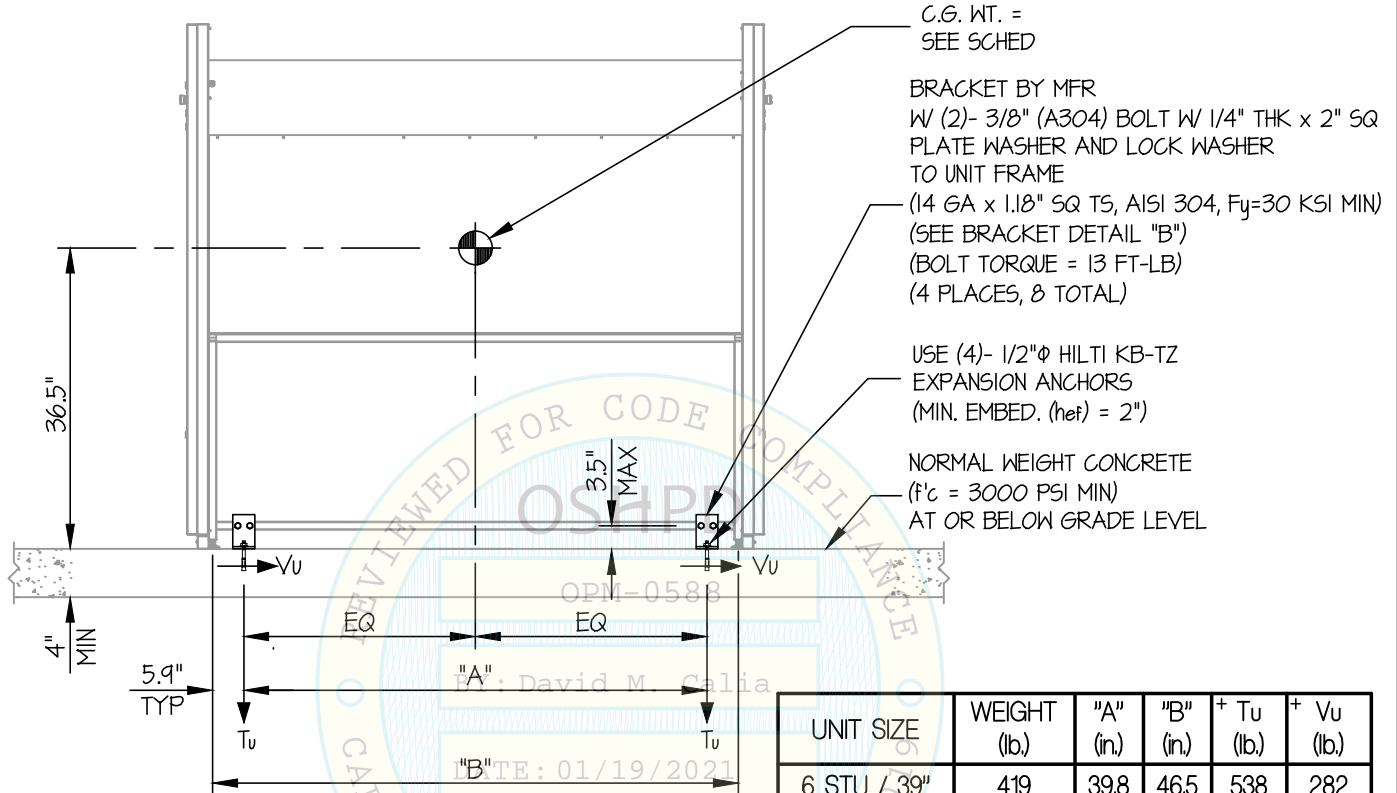
SHEET

4

OF 12 SHEETS

SEISMIC SUPPORTS & ATTACHMENTS

CONCRETE SLAB



C.G. WT. =
SEE SCHED

BRACKET BY MFR
W/ (2)- 3/8" (A304) BOLT W/ 1/4" THK x 2" SQ
PLATE WASHER AND LOCK WASHER
TO UNIT FRAME

(14 GA x 1.18" SQ TS, AISI 304, Fy=30 KSI MIN)
(SEE BRACKET DETAIL "B")
(BOLT TORQUE = 13 FT-LB)
(4 PLACES, 8 TOTAL)

USE (4)- 1/2"φ HILTI KB-TZ
EXPANSION ANCHORS
(MIN. EMBED. (hef) = 2")

NORMAL WEIGHT CONCRETE
(f'c = 3000 PSI MIN)
AT OR BELOW GRADE LEVEL

SIDE ELEVATION
(26" x 26" DOOR)

UNIT SIZE	WEIGHT (lb.)	"A" (in.)	"B" (in.)	+ Tu (lb.)	+ Vu (lb.)
6 STU / 39"	419	39.8	46.5	538	282
8 STU / 51"	452	51.6	58.3	555	304
10 STU / 63"	485	63.4	70.2	578	326
12 STU / 75"	518	75.2	82.0	604	348

+ VALUES INCLUDE Ω_o



STERIS CORPORATION

AMSCO 600 PASSTHROUGH CHAMBER

DES. **J. ROBERSON**

JOB NO. **14-2010**

DATE **1/13/21**

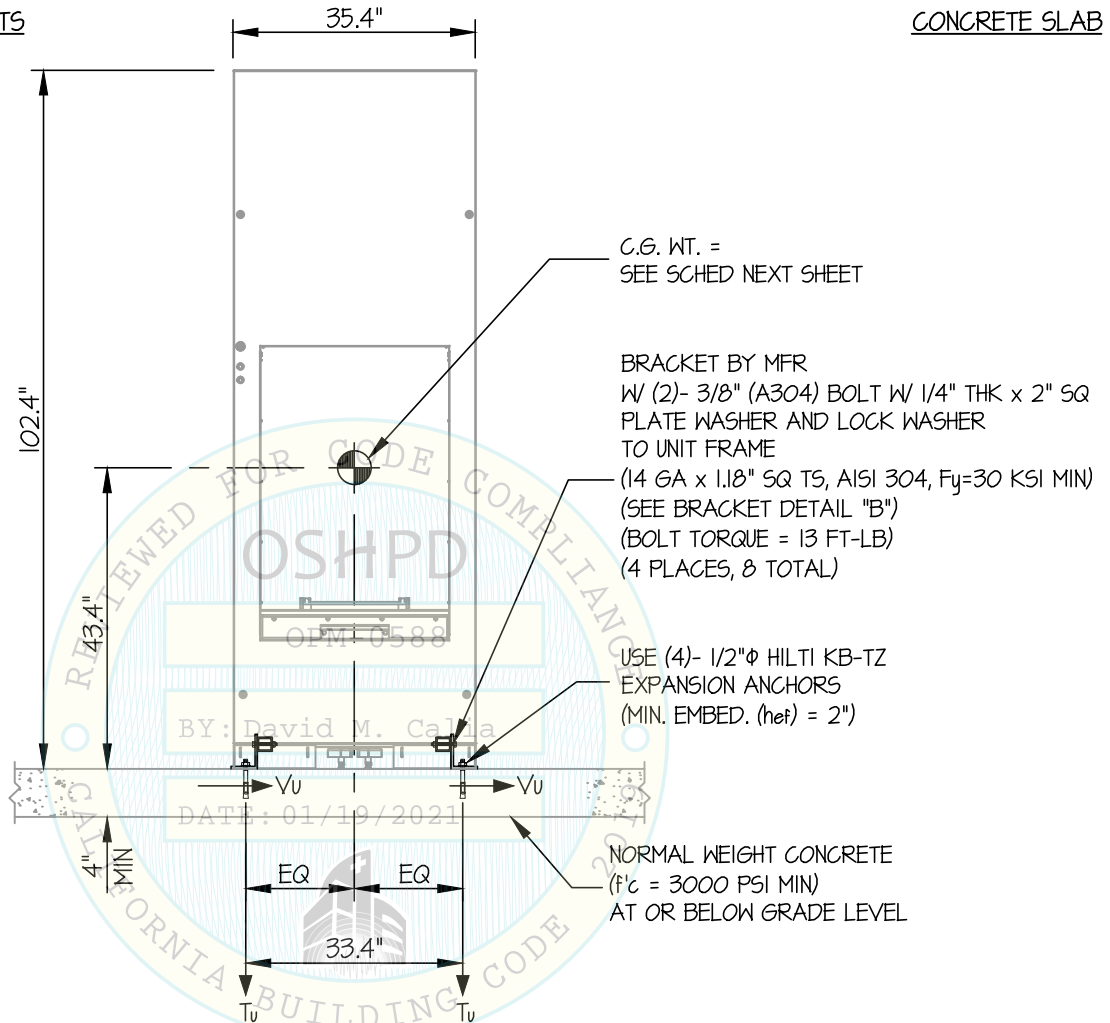
SHEET

5

OF **12** SHEETS

SEISMIC SUPPORTS & ATTACHMENTS

CONCRETE SLAB



FRONT ELEVATION

(26" x 37.5" DOOR)

NOTES:

- FORCES ARE DETERMINED PER 2019 CALIFORNIA BUILDING CODE AND ASCE 7-16 STRENGTH DESIGN IS USED. ($S_{Ds} = 2.30$, $a_p = 1.0$, $l_p = 1.5$, $R_p = 1.5$, $\Omega_o = 2.0$, $z/h = 0$)

HORIZONTAL FORCE (E_h) = 1.035 W_p

HORIZONTAL FORCE (E_{mh}) = 2.07 W_p (FOR CONCRETE ANCHORAGE)

VERTICAL FORCE (E_v) = 0.46 W_p

- CENTER OF GRAVITY (C.G.) AND WEIGHT ARE THE GOVERNING PARAMETERS FOR DESIGN. THIS PREAPPROVAL ENCOMPASSES ALL WEIGHTS UP TO THE MAXIMUM WEIGHT SHOWN.
- STRUCTURAL ENGINEER OF RECORD FOR THE BUILDING SHALL PROVIDE SUPPORT STRUCTURE DESIGNED TO SUPPORT WEIGHTS AND FORCES SHOWN IN COMBINATION WITH ALL OTHER LOADS THAT MAY BE PRESENT.
- SEE GENERAL NOTES: SHEET 1 AND 2.



STERIS CORPORATION

AMSCO 600 PASSTHROUGH CHAMBER

DES. **J. ROBERSON**

JOB NO. **14-2010**

DATE **1/13/21**

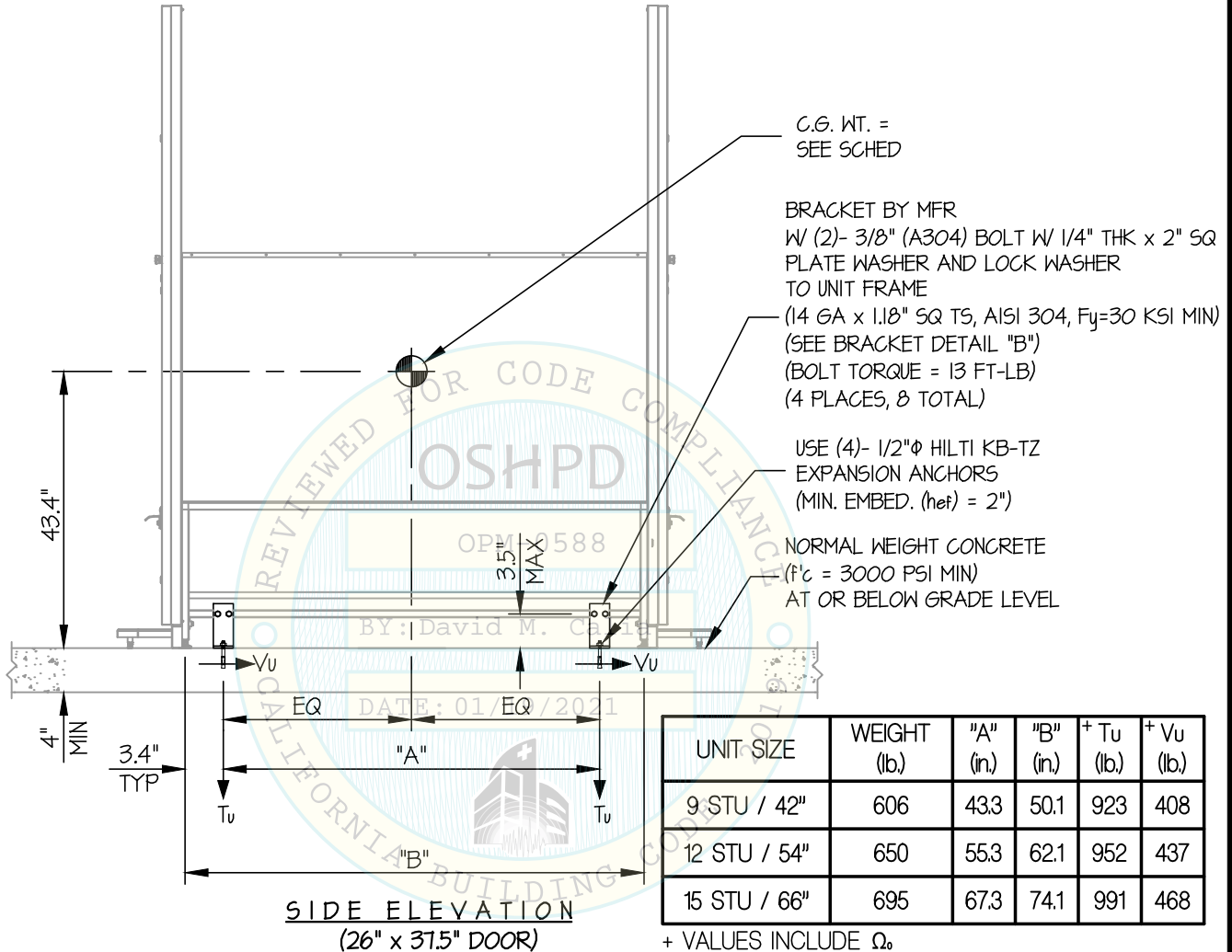
SHEET

6

OF **12** SHEETS

SEISMIC SUPPORTS & ATTACHMENTS

CONCRETE SLAB



Jonathan Roberson

REGISTERED PROFESSIONAL ENGINEER
JONATHAN ROBERSON
No. 4197
EXP. 6-30-2022
1/13/21
STRUCTURAL
STATE OF CALIFORNIA

STERIS CORPORATION

DES. J. ROBERSON

SHEET

7

JOB NO. 14-2010

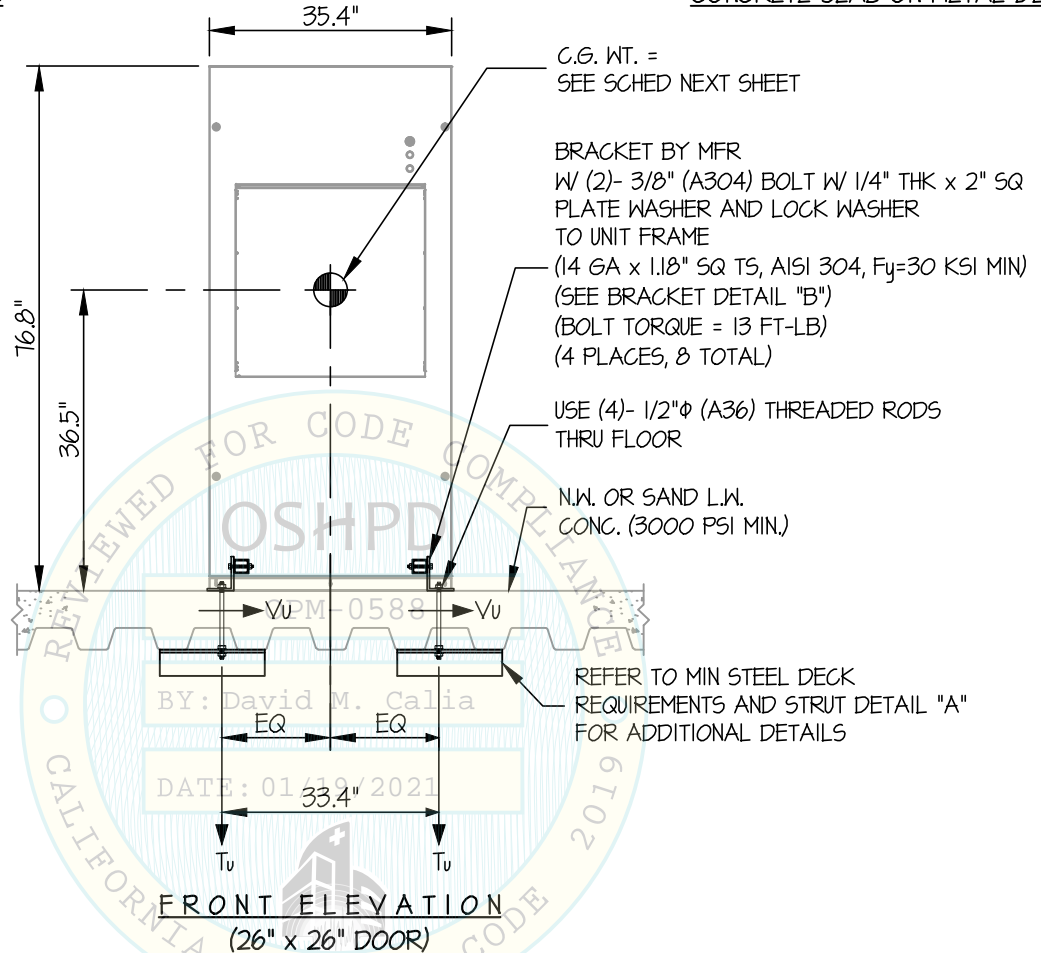
AMSCO 600 PASSTHROUGH CHAMBER

DATE 1/13/21

OF 12 SHEETS

SEISMIC SUPPORTS & ATTACHMENTS

CONCRETE SLAB ON METAL DECK



NOTES:

- FORCES ARE DETERMINED PER 2019 CALIFORNIA BUILDING CODE AND ASCE 7-16.**
STRENGTH DESIGN IS USED. ($S_{DS} = 2.30$, $a_p = 1.0$, $I_p = 1.5$, $R_p = 1.5$, $\Omega_o = 2.0$, $z/h \leq 1$)
HORIZONTAL FORCE (E_h) = 2.76 W_p
HORIZONTAL FORCE (E_{mh}) = 5.52 W_p (FOR CONCRETE ANCHORAGE)
VERTICAL FORCE (E_v) = 0.46 W_p
- CENTER OF GRAVITY (C.G.) AND WEIGHT ARE THE GOVERNING PARAMETERS FOR DESIGN. THIS PREAPPROVAL ENCOMPASSES ALL WEIGHTS UP TO THE MAXIMUM WEIGHT SHOWN.
- STRUCTURAL ENGINEER OF RECORD FOR THE BUILDING SHALL PROVIDE SUPPORT STRUCTURE DESIGNED TO SUPPORT WEIGHTS AND FORCES SHOWN IN COMBINATION WITH ALL OTHER LOADS THAT MAY BE PRESENT.
- SEE GENERAL NOTES: SHEET 1 AND 2.



STERIS CORPORATION

DES. **J. ROBERSON**

SHEET

8

AMSCO 600 PASSTHROUGH CHAMBER

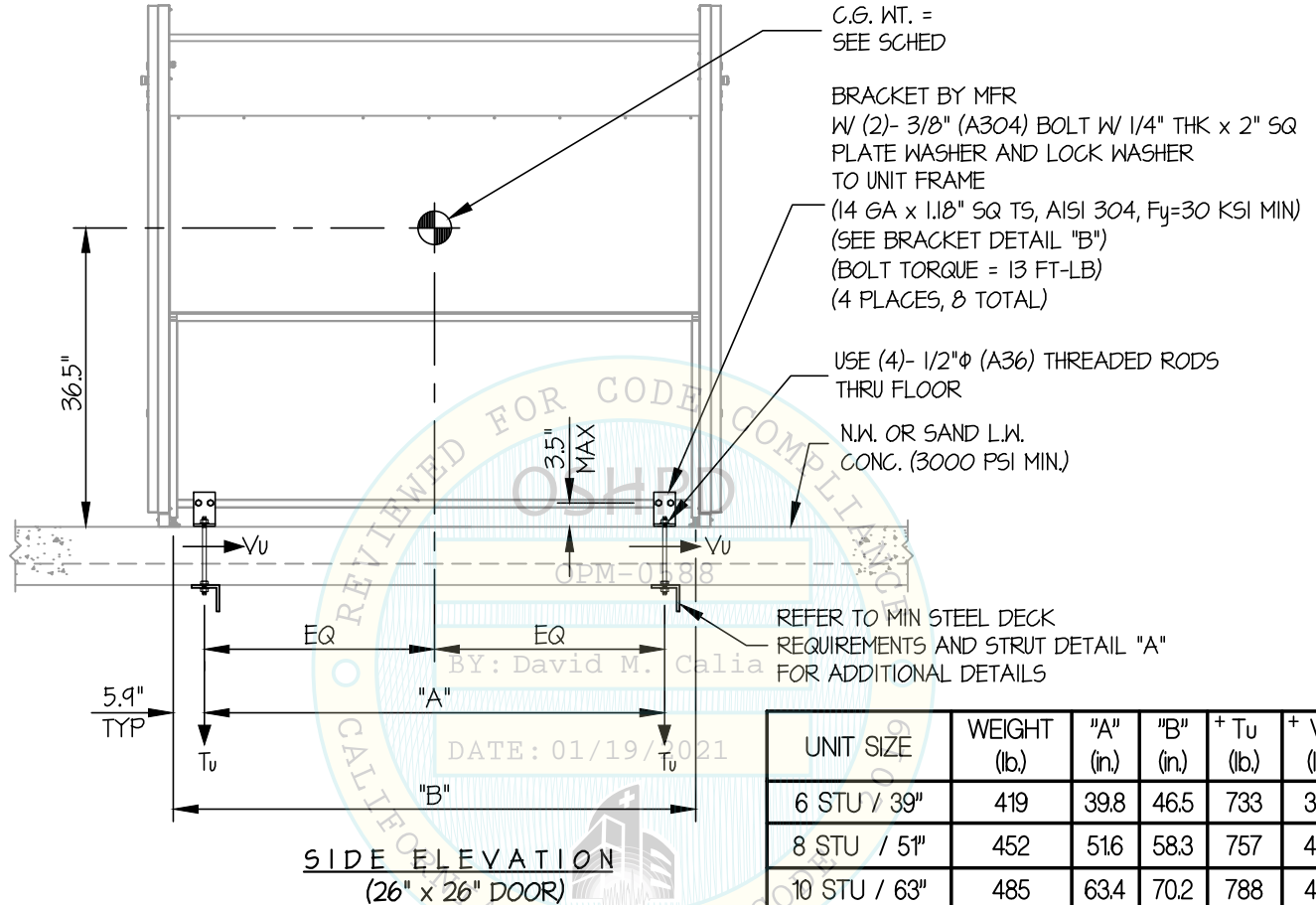
JOB NO. **14-2010**

DATE **1/13/21**

OF **12** SHEETS

SEISMIC SUPPORTS & ATTACHMENTS

CONCRETE SLAB ON METAL DECK



UNIT SIZE	WEIGHT (lb.)	"A" (in.)	"B" (in.)	+ Tu (lb.)	+ Vu (lb.)
6 STU / 39"	419	39.8	46.5	733	376
8 STU / 51"	452	51.6	58.3	757	406
10 STU / 63"	485	63.4	70.2	788	435
12 STU / 75"	518	75.2	82.0	824	465

+ VALUES DO NOT INCLUDE Ω₀



STERIS CORPORATION

DES. J. ROBERSON

SHEET

9

AMSCO 600 PASSTHROUGH CHAMBER

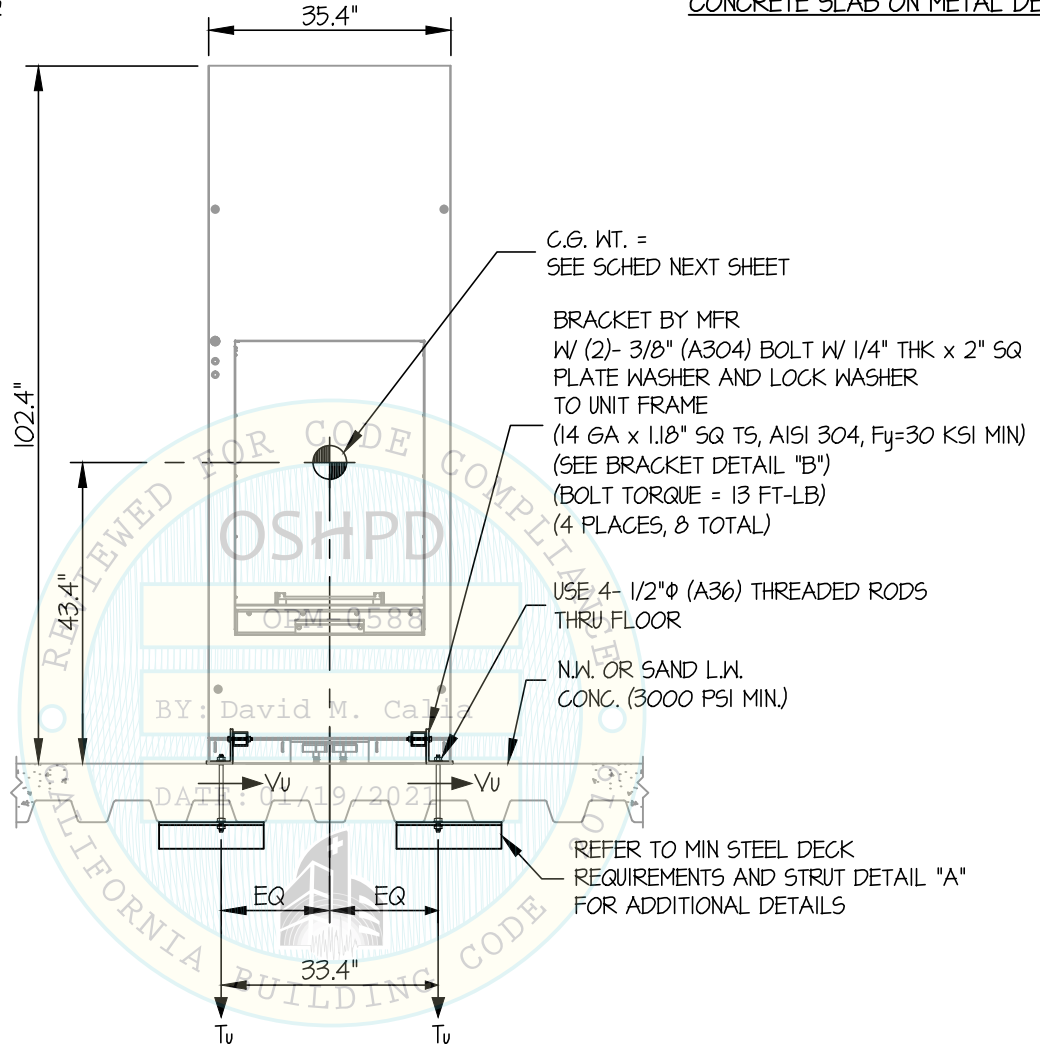
JOB NO. 14-2010

DATE 1/13/21

OF 12 SHEETS

SEISMIC SUPPORTS & ATTACHMENTS

CONCRETE SLAB ON METAL DECK



FRONT ELEVATION

(26" x 31.5" DOOR)

NOTES:

- FORCES ARE DETERMINED PER 2019 CALIFORNIA BUILDING CODE AND ASCE 7-16.

STRENGTH DESIGN IS USED. ($S_{ds} = 1.90$, $a_p = 1.0$, $I_p = 1.5$, $R_p = 1.5$, $\Omega_o = 2.0$, $z/h \leq 1$)

HORIZONTAL FORCE (E_h) = $2.28 W_p$

HORIZONTAL FORCE (E_{mh}) = $4.56 W_p$ (FOR CONCRETE ANCHORAGE)

VERTICAL FORCE (E_v) = $0.38 W_p$

- CENTER OF GRAVITY (C.G.) AND WEIGHT ARE THE GOVERNING PARAMETERS FOR DESIGN. THIS PREAPPROVAL ENCOMPASSES ALL WEIGHTS UP TO THE MAXIMUM WEIGHT SHOWN.
- STRUCTURAL ENGINEER OF RECORD FOR THE BUILDING SHALL PROVIDE SUPPORT STRUCTURE DESIGNED TO SUPPORT WEIGHTS AND FORCES SHOWN IN COMBINATION WITH ALL OTHER LOADS THAT MAY BE PRESENT.
- SEE GENERAL NOTES; SHEET 1 AND 2.



STERIS CORPORATION

AMSCO 600 PASSTHROUGH CHAMBER

DES. **J. ROBERSON**

JOB NO. **14-2010**

DATE **1/13/21**

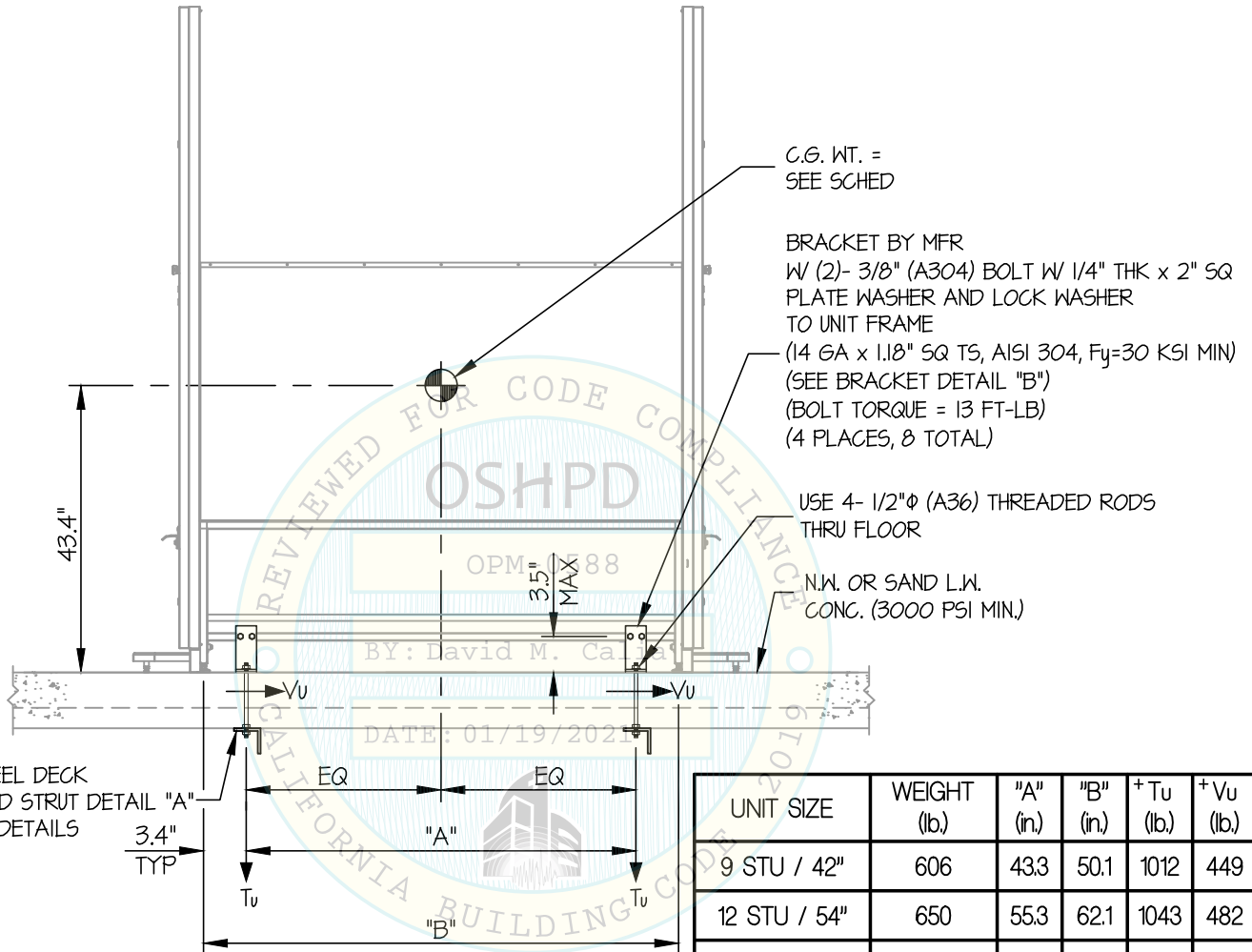
SHEET

10

OF **12** SHEETS

SEISMIC SUPPORTS & ATTACHMENTS

CONCRETE SLAB ON METAL DECK



SIDE ELEVATION
(26" x 37.5" DOOR)

UNIT SIZE	WEIGHT (lb.)	"A" (in.)	"B" (in.)	+ Tu (lb.)	+ Vu (lb.)
9 STU / 42"	606	43.3	50.1	1012	449
12 STU / 54"	650	55.3	62.1	1043	482
15 STU / 66"	695	67.3	74.1	1085	515

+ VALUES DO NOT INCLUDE Ω



STERIS CORPORATION

DES. J. ROBERSON

SHEET

11

AMSCO 600 PASSTHROUGH CHAMBER

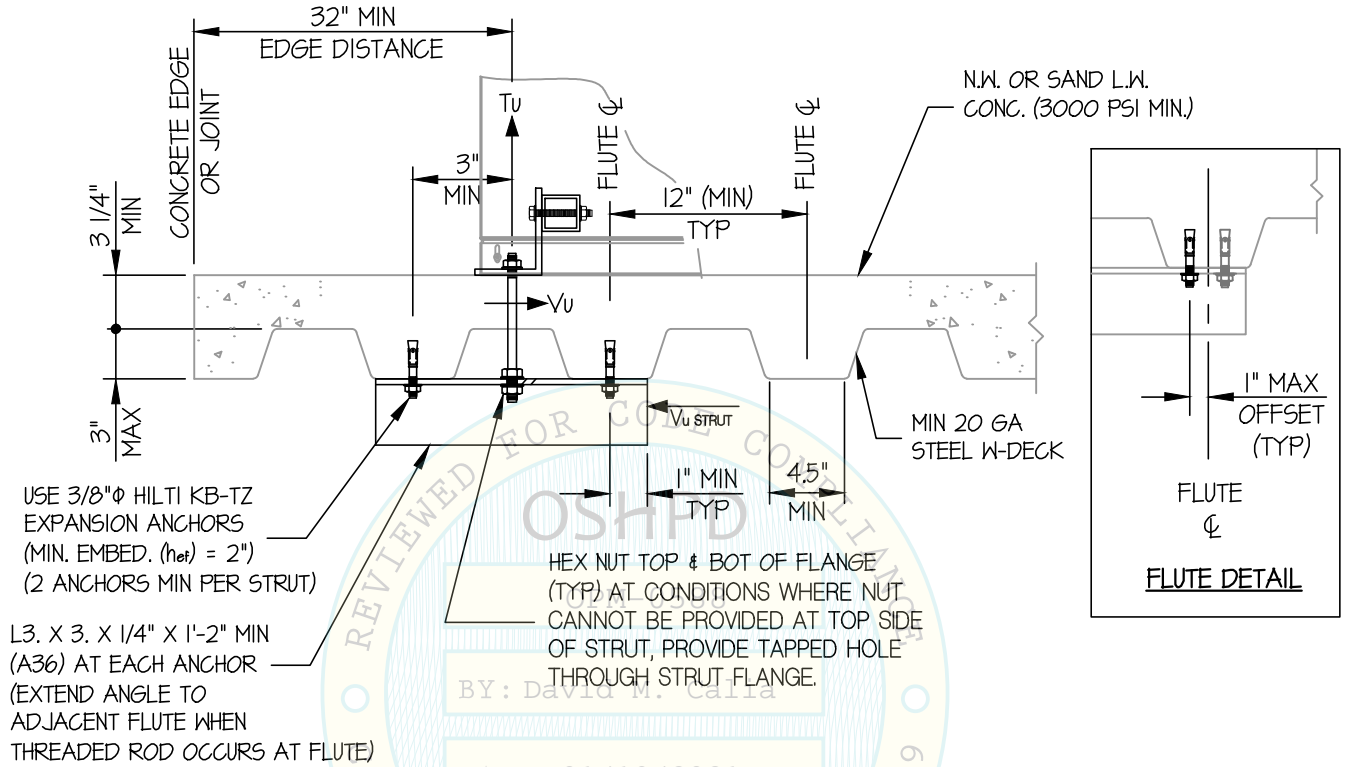
JOB NO. 14-2010

DATE 1/13/21

OF 12 SHEETS

SEISMIC SUPPORTS & ATTACHMENTS

CONCRETE DETAIL



MIN STEEL DECK REQUIREMENTS AND STRUT DETAIL (A)



STERIS CORPORATION

DES. **J. ROBERSON**

SHEET

12

AMSCO 600 PASSTHROUGH CHAMBER

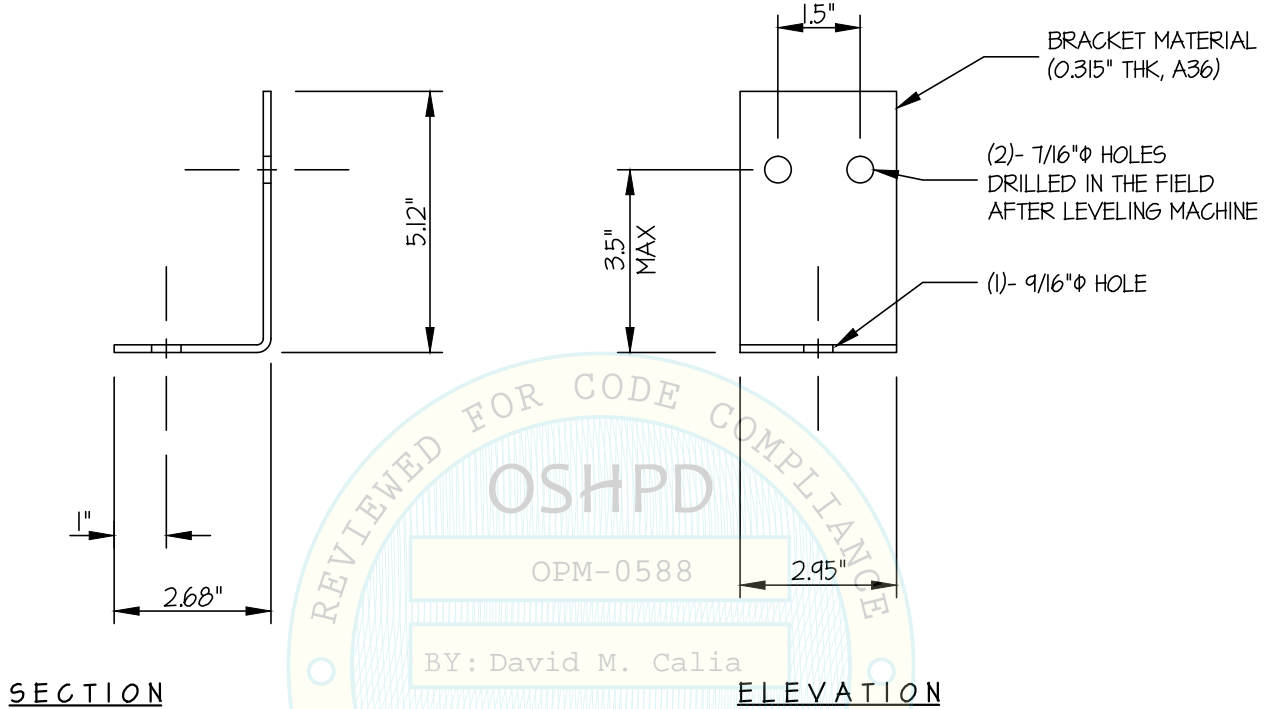
JOB NO. **14-2010**

DATE **1/13/21**

OF **12** SHEETS

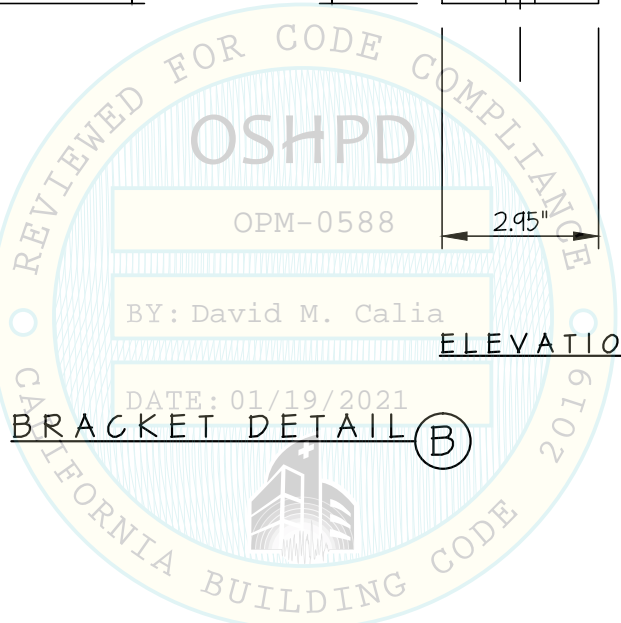
SEISMIC SUPPORTS & ATTACHMENTS

BRACKET DETAIL



SECTION

ELEVATION



BRACKET DETAIL (B)

