



OFFICE OF STATEWIDE HEALTH PLANNING AND DEVELOPMENT
FACILITIES DEVELOPMENT DIVISION

APPLICATION FOR OSHPD PREAPPROVAL OF
MANUFACTURER'S CERTIFICATION (OPM)

OFFICE USE ONLY

APPLICATION #: OPM-0621

OSHPD Preapproval of Manufacturer's Certification (OPM)

Type: [X] New [ ] Renewal/Update

Manufacturer Information

Manufacturer: OFS

Manufacturer's Technical Representative: Donn Mehringer

Mailing Address: 4611 South 400 West, Huntingburg, IN 47542

Telephone: () - Email: dmehringer@ofs.com

Product Information

Product Name: OFS Carolina Mile Marker

Product Type: Upper Cabinet

Product Model Number: Cabinets with product numbers ending UC, UCS, UCD, UCDS, UCDGB, UCDGBS, UCHD, UCHDS, UHCDS, UCL, and UCLS

General Description: Wall mounted upper cabinets

Applicant Information

Applicant Company Name: JENSEN HUGHES

Contact Person: KEVIN DOMMER

Mailing Address: 824 Hinman Avenue, 3N, EVANSTON, IL 60202

Telephone: (847) 349-4497 Email: kdommer@jensenhughes.com

Title: Lead Engineer

\*Access to Safe, Quality Healthcare Environments that Meet California's Diverse and Dynamic Needs\*

STATE OF CALIFORNIA - HEALTH AND HUMAN SERVICES AGENCY





**OFFICE OF STATEWIDE HEALTH PLANNING AND DEVELOPMENT  
FACILITIES DEVELOPMENT DIVISION**

**Registered Design Professional Preparing Engineering Recommendations**

Company Name: JENSEN HUGHES  
Name: Kevin Dommer California License Number: CE89829  
Mailing Address: 475 Bond Street, Suite 120, Lincolnshire, IL 60069  
Telephone: (847) 349-4497 Email: kdommer@jensenhughes.com

**OSHPD Special Seismic Certification Preapproval (OSP)**

Special Seismic Certification is preapproved under OSP OSP Number: \_\_\_\_\_

**Certification Method**

Testing in accordance with:  ICC-ES AC156  FM 1950-16  
 Other(s) (Please Specify): \_\_\_\_\_

\*Use of criteria other than those adopted by the California Building Standards Code, 2019 (CBSC 2019) for component supports and attachments are not permitted. For distribution system, interior partition wall, and suspended ceiling seismic bracings, test criteria other than those adopted in the CBSC 2019 may be used when approved by OSHPD prior to testing.

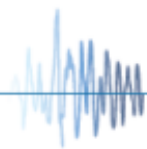
- Analysis
- Experience Data
- Combination of Testing, Analysis, and/or Experience Data (Please Specify): \_\_\_\_\_

**OSHPD Approval**

Date: 6/21/2021  
Name: William Staehlin Title: Senior Structural Engineer  
Condition of Approval (if applicable): \_\_\_\_\_

\*Access to Safe, Quality Healthcare Environments that Meet California's Diverse and Dynamic Needs\*

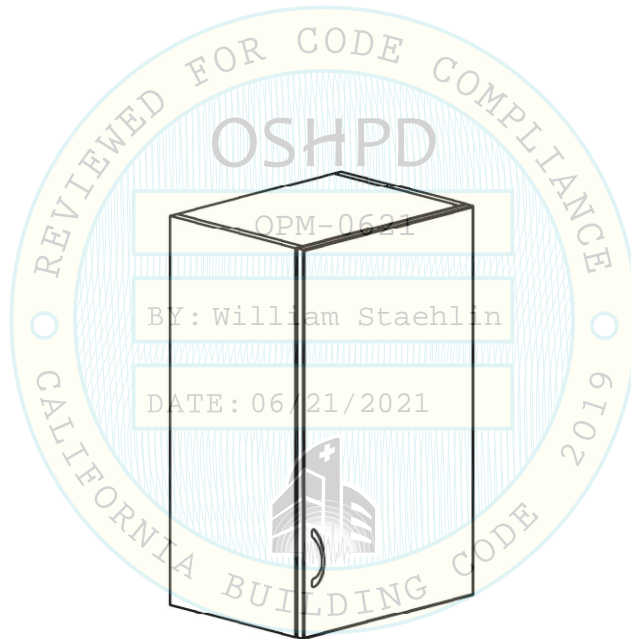
STATE OF CALIFORNIA – HEALTH AND HUMAN SERVICES AGENCY



# OPM-0621 OFS CAROLINA MILE MARKER UPPER CABINETS

EQUIPMENT

ITEMS INCLUDED IN THIS DESIGN INCLUDE OFS CAROLINA MILE MARKER WALL ATTACHED OFS CAROLINA MILE MARKER UPPER CABINETS WITH PRODUCT NUMBERS ENDING IN UC, UCS, UCD, UCDS, UCDGB, UCDGBS, UCHD, UCHDS, UHCDS, UCL, OR UCLS. THE STRUCTURAL ENGINEER OF RECORD MUST VERIFY ALL ITEMS WITH THE SPECIFIED DIMENSIONS AND WEIGHTS INCLUDED IN THE TABLE STARTING ON SHEET 4.



ISOMETRIC VIEW



*Kevin Dommer*  
05/27/2021

<b>OFS CAROLINA MILE MARKER UPPER CABINETS</b>	MANUFACTURER OFS	PROJECT NO 1CMH00005.000	EQUIPMENT OFS CAROLINA MILE MARKER UPPER CABINETS WITH PRODUCT NUMBERS ENDING IN UC, UCS, UCD, UCDS, UCDGB, UCDGBS, UCHD, UCHDS, UHCDS, UCL, OR UCLS.		
	PRODUCT LINE CAROLINA MILE MARKER	DATE 05/27/2021	<p style="font-size: small;">100 Quannapowitt Parkway Suite 401 Wakefield, MA 01880 O: +1 857-259-4968 www.jensenhughes.com</p>		
	EQUIPMENT DESCRIPTION WALL ATTACHED UPPER CABINET	DESIGN CMH			
OPM NUMBER OPM-0621 6/21/2021	SHEET 1 OF 4 OPM-0621: Reviewed for Code Compliance by William Staehlin		3 of 6		

GENERAL NOTES

1. THIS OSHPD PREAPPROVAL OF MANUFACTURER'S CERTIFICATION (OPM) IS BASED ON THE CBC 2019. THE DEMAND FOR USE WITH THIS OPM MUST BE BASED ON THE CBC 2019.
2. SEISMIC DESIGN FORCES ARE PER ASCE 7-16, WHERE:
  - a.  $S_{DS}=2.50$ ;  $a_p=1.0$ ;  $I_p=1.5$ ;  $R_p=2.5$ ;  $z/h \leq 1.0$
  - b. LRFD:  $E_h=1.85W_p$ ;  $E_v=0.51W_p$
  - c. ASD: FACTOR OF 0.7 APPLIED TO LRFD LOADS
3. THE DETAILS IN THIS PREAPPROVAL MAY BE USED AT ANY LOCATION WHERE  $S_{DS} \leq 2.50$  AND  $z/h \leq 1.0$ .
4. ALL SEISMIC SCREW FORCES SHOWN ON THE DRAWINGS ARE UNFACTORED LOADS THAT MUST BE USED FOR ALLOWABLE STRESS DESIGN (ASD).
5. SHEET METAL SCREWS (SMS) MUST CONFORM TO MINIMUM SPACING, EDGE DISTANCE, AND EMBEDMENT THROUGH STUDS PER ESR-2196.
6. THIS PREAPPROVAL COVERS ONLY THE SUPPORTS AND ATTACHMENTS OF THE EQUIPMENT TO THE STRUCTURE. SEE SHEET 3 FOR LIGHT GAUGE STEEL MINIMUM SPECIFICATIONS.
7. THE CENTER OF GRAVITY (DCG, HCG) SHOWN ON THE DRAWINGS IS A MAXIMUM. THIS PREAPPROVAL ENCOMPASSES ALL WEIGHTS UP TO THE MAXIMUM WEIGHT (WT TOTAL) AND CENTER OF GRAVITY (HCG, DCG) SHOWN IN THE TABLE STARTING ON SHEET 4.
8. A SIGN MUST BE POSTED ON ALL CABINETS TO INDICATE THE MAXIMUM MEDIA WEIGHT INSIDE (MEDIA WT INSIDE) AND ON TOP (MEDIA WT TOP) OF THE CABINET AS SHOWN ON THE TABLE STARTING ON SHEET 4.
9. FOR GEOMETRY, WEIGHT, AND SCREW FORCES, SEE THE TABLE STARTING ON SHEET 4.
10. MINIMUM SCREW SPACING MUST BE 3/4" AND MINIMUM EDGE DISTANCE MUST BE 3/8".

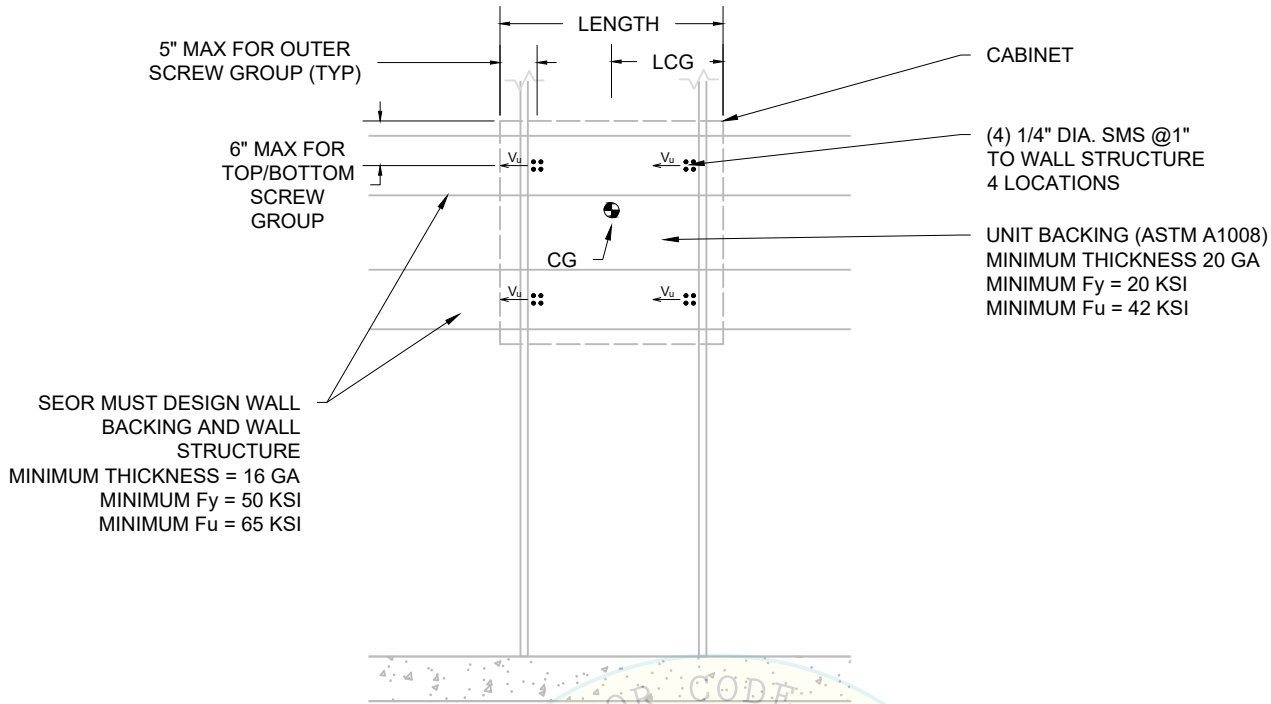
RESPONSIBILITIES OF THE STRUCTURAL ENGINEER OF RECORD (SEOR)

11. DESIGN OF BACKING PLATES AND STUDS TO WHICH THE UNITS ARE ATTACHED, AS NOTED ON THE DRAWINGS.
12. VERIFICATION OF THE ADEQUACY OF THE STRUCTURES WHICH RESIST ALL APPLICABLE LOADS CAUSED BY THE ITEMS HEREIN.
13. DESIGN OF ANY SUPPORTING STRUCTURE REQUIRED TO SUPPORT THE WEIGHTS AND FORCES SHOWN HEREIN, IN ADDITION TO ALL OTHER APPLICABLE LOADS. / 21 / 2021
14. VERIFICATION THAT THE INSTALLATION IS IN CONFORMANCE WITH THE 2019 CBC AND WITH THE DETAILS SHOWN IN THIS DOCUMENT.
15. VERIFICATION THAT THE ACTUAL EQUIPMENT WEIGHT, CENTER OF GRAVITY (CG) LOCATION, ANCHOR LOCATIONS, ANCHOR DETAILS, AND THE MATERIAL AND GAUGE OF THE UNIT WHERE ATTACHMENTS ARE MADE AGREE WITH THE INFORMATION SHOWN IN THE PREAPPROVAL DOCUMENTS.
16. VERIFICATION THAT THE COMBINATION OF  $S_{DS}$  AND  $z/h$  RESULT IN SEISMIC FORCES ( $E_h$  AND  $E_v$ ) THAT ARE NOT GREATER THAN THE VALUES IN THESE GENERAL NOTES.
17. VERIFICATION THAT THE ATTACHMENTS ARE LOCATED AT AN ADEQUATE DISTANCE AWAY FROM ANY END OR EDGE OF METAL STUD.



*Kevin Dommer*  
05/27/2021

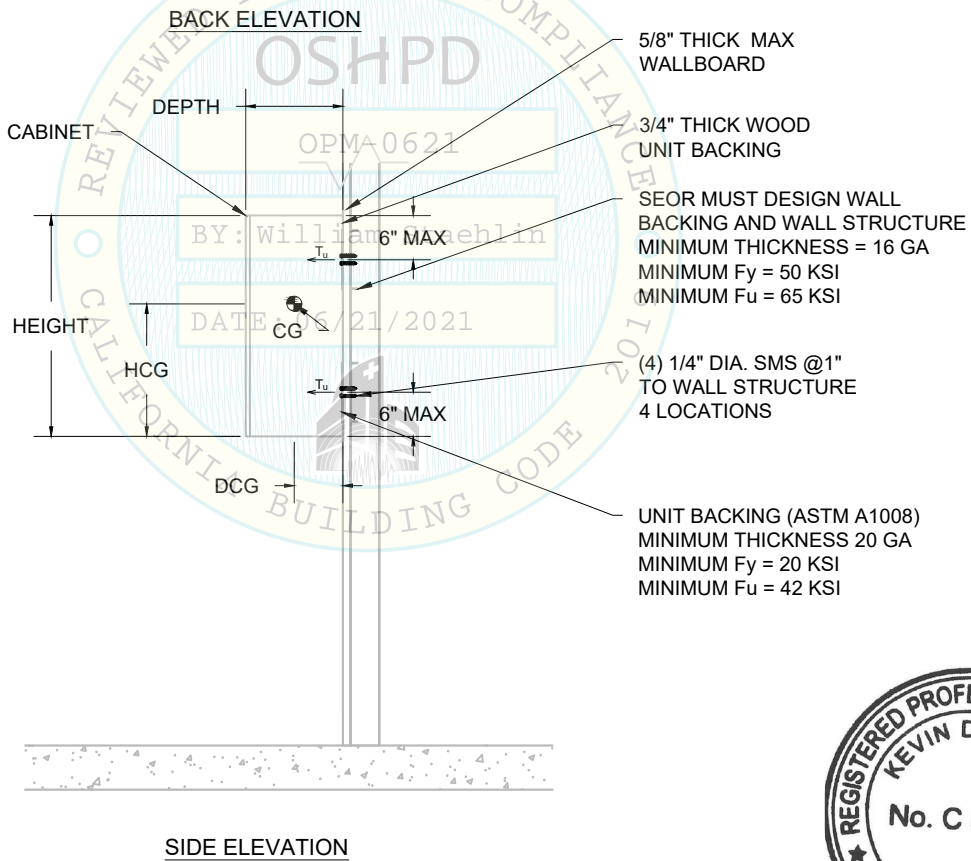
TITLE  <b>OFS CAROLINA MILE MARKER UPPER CABINETS</b>	MANUFACTURER OFS	PROJECT NO 1CMH00005.000	EQUIPMENT  OFS CAROLINA MILE MARKER UPPER CABINETS WITH PRODUCT NUMBERS ENDING IN UC, UCS, UCD, UCDS, UCDBG, UCDBS, UCHD, UCHDS, UHCDS, UCL, OR UCLS.			 <b>JENSEN HUGHES</b> 100 Quannapowitt Parkway Suite 401 Wakefield, MA 01880 O: +1 857-259-4968 www.jensenhughes.com
	PRODUCT LINE CAROLINA MILE MARKER	DATE 05/27/2021				
	EQUIPMENT DESCRIPTION  WALL ATTACHED UPPER CABINET	DESIGN CMH	DRAWN BY CMH	CHECKED BY KPD		
OPM NUMBER OPM-0621 6/21/2021	SHEET 2 OF 4 OPM-0621: Reviewed for Code Compliance by William Staehlin			4 of 6		



SEOR MUST DESIGN WALL BACKING AND WALL STRUCTURE  
 MINIMUM THICKNESS = 16 GA  
 MINIMUM Fy = 50 KSI  
 MINIMUM Fu = 65 KSI

CABINET  
 (4) 1/4" DIA. SMS @1" TO WALL STRUCTURE 4 LOCATIONS  
 UNIT BACKING (ASTM A1008) MINIMUM THICKNESS 20 GA  
 MINIMUM Fy = 20 KSI  
 MINIMUM Fu = 42 KSI

FOR CABINETS WITH SLOPED TOPS, THE HEIGHT REPRESENTS THE HIGHEST POINT OF THE SLOPE



5/8" THICK MAX WALLBOARD  
 3/4" THICK WOOD UNIT BACKING  
 SEOR MUST DESIGN WALL BACKING AND WALL STRUCTURE  
 MINIMUM THICKNESS = 16 GA  
 MINIMUM Fy = 50 KSI  
 MINIMUM Fu = 65 KSI  
 (4) 1/4" DIA. SMS @1" TO WALL STRUCTURE 4 LOCATIONS  
 UNIT BACKING (ASTM A1008) MINIMUM THICKNESS 20 GA  
 MINIMUM Fy = 20 KSI  
 MINIMUM Fu = 42 KSI

- NOTES:
1. UNIT CONSTRUCTED OF 3/4" THICK WOOD BOARDS. SMS TO FASTEN THROUGH STEEL UNIT BACKING, WOOD UNIT BACKING, AND WALLBOARD TO THE STEEL WALL BACKING. THE SUM OF THE THICKNESSES OF THESE ITEMS MUST NOT BE GREATER THAN THE SPECIFIED MAXIMUM TOTAL THICKNESS, MT, OF THE SMS.
  2. A SIGN MUST BE POSTED ON ALL CABINETS TO INDICATE THE MAXIMUM MEDIA WEIGHT ALLOWED INSIDE AND ON TOP OF THE CABINET, AS SHOWN IN THE TABLE ON SHEET 4.



*Kevin Dommer*  
 05/27/2021

<b>TITLE</b> OFS CAROLINA MILE MARKER UPPER CABINETS	<b>MANUFACTURER</b> OFS	<b>PROJECT NO</b> 1CMH00005.000	<b>EQUIPMENT</b> OFS CAROLINA MILE MARKER UPPER CABINETS WITH PRODUCT NUMBERS ENDING IN UC, UCS, UCD, UCDS, UCDBG, UCDBS, UCHD, UCHDS, UHCDS, UCL, OR UCLS.		
	<b>PRODUCT LINE</b> CAROLINA MILE MARKER	<b>DATE</b> 05/27/2021			
	<b>EQUIPMENT DESCRIPTION</b> WALL ATTACHED UPPER CABINET	<b>DESIGN</b> CMH			
<b>OPM NUMBER</b> OPM-0621 6/21/2021	<b>3 OF 4</b> OPM-0621: Reviewed for Code Compliance by William Staehlin			<b>5 of 6</b>	



**CABINET DIMENSIONS, WEIGHTS, AND SCREW FORCES**

ITEM	DIMENSIONS			CENTER OF GRAVITY			WEIGHT				MAX GROUP FORCE	
	LENGTH [in]	DEPTH [in]	HEIGHT [in]	HCG [in]	LCG [in]	DCG [in]	CABINET WT [lb]	MEDIA WT INSIDE [lb]	MEDIA WT TOP [lb]	TOTAL WT [lb]	Tu [lb]	Vu [lb]
MM-121424	12.00	14.00	24.00	14.87	6.00	7.00	45	77	38	160	416	74
MM-151424	15.00	14.00	24.00	14.99	7.50	7.00	48	96	48	192	245	88
MM-181424	18.00	14.00	24.00	15.09	9.00	7.00	50	116	57	223	211	100
MM-211424	21.00	14.00	24.00	15.13	10.50	7.00	55	135	67	257	224	112
MM-241424	24.00	14.00	24.00	15.16	12.00	7.00	60	154	77	291	254	123
MM-271424	27.00	14.00	24.00	15.21	13.50	7.00	63	173	86	322	283	133
MM-301424	30.00	14.00	24.00	15.25	15.00	7.00	65	193	96	353	311	142
MM-331424	33.00	14.00	24.00	15.28	16.50	7.00	68	212	105	385	339	152
MM-361424	36.00	14.00	24.00	15.31	18.00	7.00	70	231	115	416	367	161
MM-121430	12.00	14.00	30.00	18.11	6.00	7.00	50	96	38	185	455	78
MM-151430	15.00	14.00	30.00	18.24	7.50	7.00	53	120	48	221	253	94
MM-181430	18.00	14.00	30.00	18.35	9.00	7.00	55	144	57	257	209	108
MM-211430	21.00	14.00	30.00	18.40	10.50	7.00	60	168	67	295	206	123
MM-241430	24.00	14.00	30.00	18.44	12.00	7.00	65	193	77	334	233	137
MM-271430	27.00	14.00	30.00	18.48	13.50	7.00	68	217	86	371	259	150
MM-301430	30.00	14.00	30.00	18.53	15.00	7.00	70	241	96	406	285	162
MM-331430	33.00	14.00	30.00	18.56	16.50	7.00	73	265	105	443	311	174
MM-361430	36.00	14.00	30.00	18.60	18.00	7.00	75	289	115	479	337	185
MM-121436	12.00	14.00	36.00	21.30	6.00	7.00	55	116	38	209	501	84
MM-151436	15.00	14.00	36.00	21.44	7.50	7.00	58	144	48	250	270	101
MM-181436	18.00	14.00	36.00	21.55	9.00	7.00	60	173	57	291	217	117
MM-211436	21.00	14.00	36.00	21.61	10.50	7.00	65	202	67	334	203	134
MM-241436	24.00	14.00	36.00	21.65	12.00	7.00	70	231	77	378	229	150
MM-271436	27.00	14.00	36.00	21.70	13.50	7.00	73	260	86	419	255	165
MM-301436	30.00	14.00	36.00	21.75	15.00	7.00	75	289	96	459	280	179
MM-331436	33.00	14.00	36.00	21.78	16.50	7.00	78	318	105	501	306	194
MM-361436	36.00	14.00	36.00	21.82	18.00	7.00	80	347	115	541	331	207
MM-121429	12.00	14.00	29.00	17.65	6.00	7.00	45	93	38	176	438	76
MM-151429	15.00	14.00	29.00	17.77	7.50	7.00	48	116	48	212	246	91
MM-181429	18.00	14.00	29.00	17.87	9.00	7.00	50	140	57	247	205	106
MM-211429	21.00	14.00	29.00	17.91	10.50	7.00	55	163	67	285	205	120
MM-241429	24.00	14.00	29.00	17.94	12.00	7.00	60	186	77	323	232	133
MM-271429	27.00	14.00	29.00	17.98	13.50	7.00	63	209	86	358	259	146
MM-301429	30.00	14.00	29.00	18.03	15.00	7.00	65	233	96	393	285	157
MM-331429	33.00	14.00	29.00	18.06	16.50	7.00	68	256	105	429	311	169
MM-361429	36.00	14.00	29.00	18.09	18.00	7.00	70	279	115	464	337	180
MM-121435	12.00	14.00	35.00	20.84	6.00	7.00	50	112	38	201	483	81
MM-151435	15.00	14.00	35.00	20.97	7.50	7.00	53	140	48	241	262	98
MM-181435	18.00	14.00	35.00	21.08	9.00	7.00	55	168	57	281	213	114
MM-211435	21.00	14.00	35.00	21.12	10.50	7.00	60	197	67	323	200	131
MM-241435	24.00	14.00	35.00	21.16	12.00	7.00	65	225	77	366	227	147
MM-271435	27.00	14.00	35.00	21.20	13.50	7.00	68	253	86	407	253	161
MM-301435	30.00	14.00	35.00	21.25	15.00	7.00	70	281	96	446	278	175
MM-331435	33.00	14.00	35.00	21.28	16.50	7.00	73	309	105	487	304	189
MM-361435	36.00	14.00	35.00	21.31	18.00	7.00	75	337	115	527	329	202
MM-121441	12.00	14.00	41.00	23.99	6.00	7.00	55	132	38	225	532	88
MM-151441	15.00	14.00	41.00	24.13	7.50	7.00	58	164	48	270	282	106
MM-181441	18.00	14.00	41.00	24.24	9.00	7.00	60	197	57	315	225	124
MM-211441	21.00	14.00	41.00	24.29	10.50	7.00	65	230	67	362	204	142
MM-241441	24.00	14.00	41.00	24.33	12.00	7.00	70	263	77	410	230	160
MM-271441	27.00	14.00	41.00	24.38	13.50	7.00	73	296	86	455	256	176
MM-301441	30.00	14.00	41.00	24.43	15.00	7.00	75	329	96	500	281	192
MM-331441	33.00	14.00	41.00	24.46	16.50	7.00	78	362	105	545	307	208
MM-361441	36.00	14.00	41.00	24.49	18.00	7.00	80	395	115	589	333	224



*Kevin Dommer*  
05/27/2021

<b>TITLE</b> OFS CAROLINA MILE MARKER UPPER CABINETS  OPM NUMBER OPM-0621 6/21/2021	<b>MANUFACTURER</b> OFS	<b>PROJECT NO</b> 1CMH00005.000	<b>EQUIPMENT</b> OFS CAROLINA MILE MARKER UPPER CABINETS WITH PRODUCT NUMBERS ENDING IN UC, UCS, UCD, UCDS, UCDBG, UCDBGS, UCHD, UCHDS, UHCDS, UCL, OR UCLS.	 100 Quannapowitt Parkway Suite 401 Wakefield, MA 01880 O: +1 857-259-4968 jensenhughes.com 6 of 6	
	<b>PRODUCT LINE</b> CAROLINA MILE MARKER	<b>DATE</b> 05/27/2021	<b>DESIGN</b> CMH		
	<b>EQUIPMENT DESCRIPTION</b> WALL ATTACHED UPPER CABINET	<b>DRAWN BY</b> CMH			<b>CHECKED BY</b> KPD
	<b>SHEET</b> 4 OF 4	OPM-0621: Reviewed for Code Compliance by William Staehlin			