



OFFICE OF STATEWIDE HEALTH PLANNING AND DEVELOPMENT
FACILITIES DEVELOPMENT DIVISION

APPLICATION FOR OSHPD PREAPPROVAL OF
MANUFACTURER'S CERTIFICATION (OPM)

OFFICE USE ONLY

APPLICATION #: OPM-0633

OSHPD Preapproval of Manufacturer's Certification (OPM)

Type: [X] New [ ] Renewal/Update

Manufacturer Information

Manufacturer: OFS

Manufacturer's Technical Representative: Donn Mehringer

Mailing Address: 4611 South 400 West, Huntingburg, IN 47542

Telephone: (812) 630-8198

Email: dmehringer@ofs.com

Product Information

Product Name: OFS Carolina Mile Marker

Product Type: Upper Storage Cabinet

Product Model Number: Products with numbers ending in USCGB and USCGBS

General Description: Wall supported storage cabinets.

Applicant Information

Applicant Company Name: Jensen Hughes

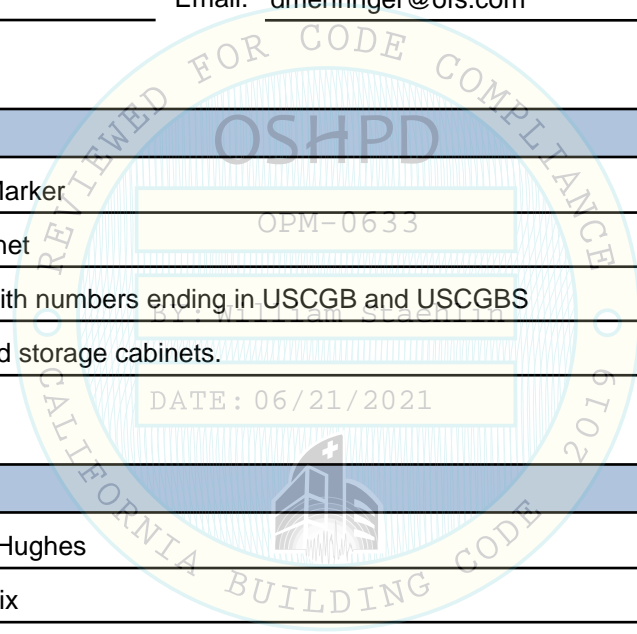
Contact Person: Christopher Hendrix

Mailing Address: 100 Quannapowitt Parkway, Suite 401, Wakefield, MA 01880

Telephone: (857) 259-4968

Email: chendrix@jensenhughes.com

Title: Lead Engineer



\*Access to Safe, Quality Healthcare Environments that Meet California's Diverse and Dynamic Needs\*

STATE OF CALIFORNIA - HEALTH AND HUMAN SERVICES AGENCY





**OFFICE OF STATEWIDE HEALTH PLANNING AND DEVELOPMENT  
FACILITIES DEVELOPMENT DIVISION**

**Registered Design Professional Preparing Engineering Recommendations**

Company Name: JENSEN HUGHES

Name: Kevin Dommer

California License Number: CE89829

Mailing Address: 475 Bond Street, Suite 120, Lincolnshire, IL 60069

Telephone: (847) 349-4497

Email: kdommer@jensenhughes.com

**OSHPD Special Seismic Certification Preapproval (OSP)**

Special Seismic Certification is preapproved under OSP

OSP Number: \_\_\_\_\_

**Certification Method**

Testing in accordance with:  ICC-ES AC156  FM 1950-16

Other(s) (Please Specify): \_\_\_\_\_

\*Use of criteria other than those adopted by the California Building Standards Code, 2019 (CBSC 2019) for component supports and attachments are not permitted. For distribution system, interior partition wall, and suspended ceiling seismic bracings, test criteria other than those adopted in the CBSC 2019 may be used when approved by OSHPD prior to testing.

Analysis

Experience Data

Combination of Testing, Analysis, and/or Experience Data (Please Specify): \_\_\_\_\_

**OSHPD Approval**

Date: 6/21/2021

Name: William Staehlin

Title: Senior Structural Engineer

Condition of Approval (if applicable): \_\_\_\_\_

\*Access to Safe, Quality Healthcare Environments that Meet California's Diverse and Dynamic Needs\*

STATE OF CALIFORNIA – HEALTH AND HUMAN SERVICES AGENCY

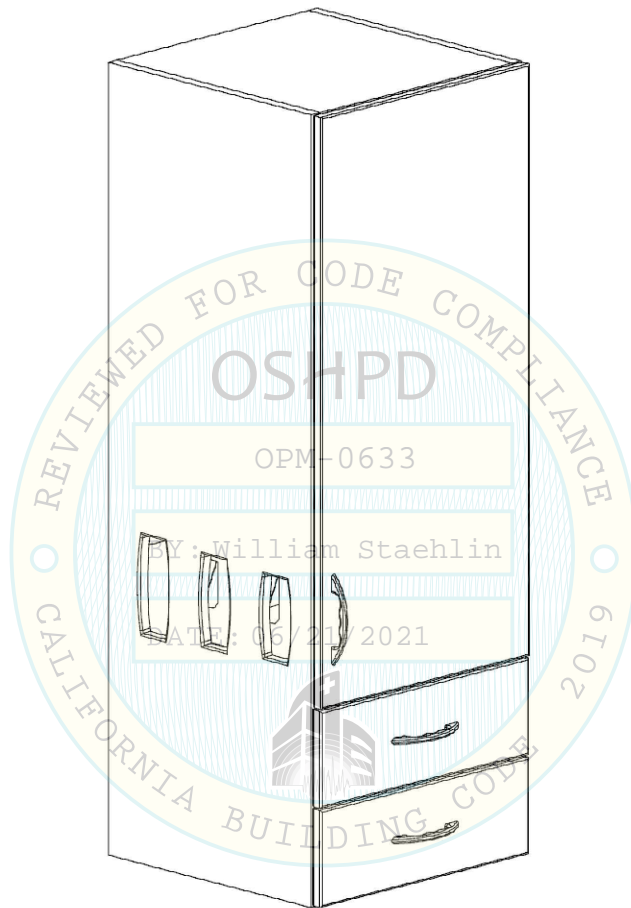


**OSHPD**

# OPM-0633 OFS CAROLINA MILE MARKER UPPER STORAGE CABINETS

EQUIPMENT

ITEMS INCLUDED IN THIS DESIGN INCLUDE OFS CAROLINA MILE MARKER WALL ATTACHED STORAGE CABINETS WITH PRODUCT NUMBERS ENDING IN USCGB OR USCGBS. STRUCTURAL ENGINEER OF RECORD MUST VERIFY ALL ITEMS WITH THE SPECIFIED DIMENSIONS AND WEIGHTS INCLUDED IN THE TABLE STARTING ON SHEET 4.



ISOMETRIC VIEW



*Kevin Dommer*  
05/27/2021

<b>TITLE</b> OFS CAROLINA MILE MARKER UPPER STORAGE CABINETS	<b>MANUFACTURER</b> OFS	<b>PROJECT NO</b> 1CMH00005.000	<b>EQUIPMENT</b> OFS CAROLINA MILE MARKER UPPER STORAGE CABINETS WITH PRODUCT NUMBERS ENDING IN USCGB OR USCGBS.			<b>JENSEN HUGHES</b> 100 Quannapowitt Parkway Suite 401 Wakefield, MA 01880 O: +1 857-259-4968 www.jensenhughes.com
	<b>PRODUCT LINE</b> CAROLINA MILE MARKER	<b>DATE</b> 05/27/2021	<b>DESIGN</b> CMH	<b>DRAWN BY</b> CMH	<b>CHECKED BY</b> KPD	
	<b>EQUIPMENT DESCRIPTION</b> WALL ATTACHED STORAGE CABINET	<b>SHEET</b> 1 OF 5 OPM-0633: Reviewed for Code Compliance by William Staehlin				
<b>OPM NUMBER</b> OPM-0633 6/21/2021						

GENERAL NOTES

1. THIS OSHPD PREAPPROVAL OF MANUFACTURER'S CERTIFICATION (OPM) IS BASED ON THE CBC 2019. THE DEMAND FOR USE WITH THIS OPM MUST BE BASED ON THE CBC 2019.
2. SEISMIC DESIGN FORCES ARE PER ASCE 7-16, WHERE:
  - a.  $S_{DS}=2.50$ ;  $a_p=1.0$ ;  $I_p=1.5$ ;  $R_p=2.5$ ;  $z/h \leq 1.0$
  - b. LRFD:  $E_H=1.85W_p$ ;  $E_V=0.51W_p$
  - c. ASD: FACTOR OF 0.7 APPLIED TO LRFD LOADS
3. THE DETAILS IN THIS PREAPPROVAL MAY BE USED AT ANY LOCATION WHERE  $S_{DS} \leq 2.50$  AND  $z/h \leq 1.0$ .
4. ALL SEISMIC SCREW FORCES SHOWN ON THE DRAWINGS ARE UNFACTORED LOADS THAT MUST BE USED FOR ALLOWABLE STRESS DESIGN (ASD).
5. SHEET METAL SCREWS (SMS) MUST BE ITW BUILDEX TEKS SELF-DRILLING FASTENERS (ESR-1976) OR HILTI SELF-DRILLING AND SELF-PIERCING SCREWS (ESR-2196).
6. SMS MUST CONFORM TO MINIMUM SPACING, EDGE DISTANCE, AND EMBEDMENT THROUGH STUDS PER ESR-1976 OR ESR-2196.
7. THIS PREAPPROVAL COVERS ONLY THE SUPPORTS AND ATTACHMENTS OF THE EQUIPMENT TO THE STRUCTURE. SEE SHEET 4 FOR LIGHT GAUGE STEEL MINIMUM SPECIFICATIONS.
8. THE CENTER OF GRAVITY (DCG, HCG) SHOWN ON THE DRAWINGS IS A MAXIMUM. THIS PREAPPROVAL ENCOMPASSES ALL WEIGHTS UP TO THE MAXIMUM WEIGHT (WT TOTAL) AND CENTER OF GRAVITY (HCG, DCG) SHOWN IN THE TABLE ON SHEET 4.
9. A SIGN MUST BE POSTED ON ALL CABINETS TO INDICATE THE MAXIMUM MEDIA WEIGHT INSIDE (MEDIA WT INSIDE) AND ON TOP (MEDIA WT TOP) OF THE CABINET AS SHOWN ON THE TABLE IN SHEET 4.
10. FOR GEOMETRY, WEIGHT, AND SCREW FORCES, SEE SHEET 4.
11. MINIMUM SCREW SPACING MUST BE 3/4" AND MINIMUM EDGE DISTANCE MUST BE 3/8".

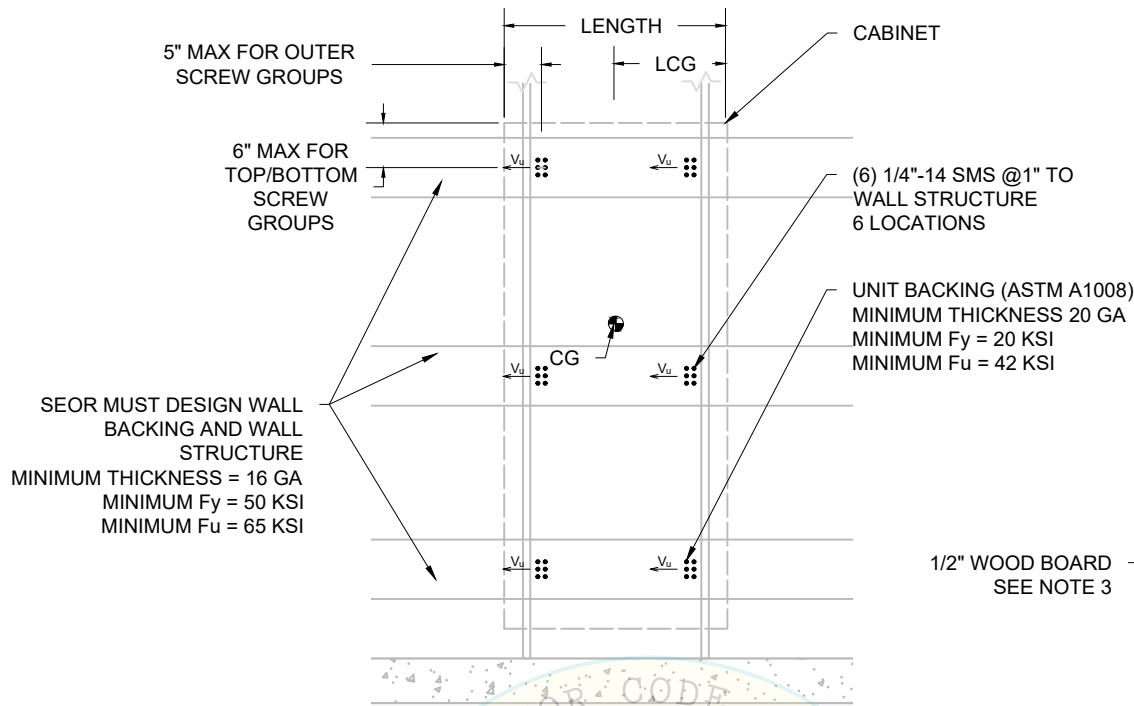
RESPONSIBILITIES OF THE STRUCTURAL ENGINEER OF RECORD (SEOR)

12. DESIGN OF BACKING PLATES AND STUDS TO WHICH THE UNITS ARE ATTACHED, AS NOTED ON THE DRAWINGS.
13. VERIFICATION OF THE ADEQUACY OF THE STRUCTURES WHICH RESIST ALL APPLICABLE LOADS CAUSED BY THE ITEMS HEREIN.
14. DESIGN OF ANY SUPPORTING STRUCTURE REQUIRED TO SUPPORT THE WEIGHTS AND FORCES SHOWN HEREIN, IN ADDITION TO ALL OTHER APPLICABLE LOADS.
15. VERIFICATION THAT THE INSTALLATION IS IN CONFORMANCE WITH THE 2019 CBC AND WITH THE DETAILS SHOWN IN THIS DOCUMENT.
16. VERIFICATION THAT THE ACTUAL EQUIPMENT WEIGHT, CENTER OF GRAVITY (CG) LOCATION, ANCHOR LOCATIONS, ANCHOR DETAILS, AND THE MATERIAL AND GAUGE OF THE UNIT WHERE ATTACHMENTS ARE MADE AGREE WITH THE INFORMATION SHOWN IN THE PREAPPROVAL DOCUMENTS.
17. VERIFICATION THAT THE COMBINATION OF  $S_{DS}$  AND Z/H RESULT IN SEISMIC FORCES ( $E_H$  AND  $E_V$ ) THAT ARE NOT GREATER THAN THE VALUES IN THESE GENERAL NOTES.
18. VERIFICATION THAT THE ATTACHMENTS ARE LOCATED AT AN ADEQUATE DISTANCE AWAY FROM ANY END OR EDGE OF METAL STUD.



*Kevin Dommer*  
05/27/2021

TITLE <b>OFS CAROLINA MILE MARKER UPPER STORAGE CABINETS</b>	MANUFACTURER OFS	PROJECT NO 1CMH00005.000	EQUIPMENT OFS CAROLINA MILE MARKER UPPER STORAGE CABINETS WITH PRODUCT NUMBERS ENDING IN USCGB OR USCGBS.			100 Quannapowitt Parkway Suite 401 Wakefield, MA 01880 O: +1 857-259-4968 www.jensenhughes.com
	PRODUCT LINE CAROLINA MILE MARKER	DATE 05/27/2021				
	EQUIPMENT DESCRIPTION WALL ATTACHED STORAGE CABINET	DESIGN CMH	DRAWN BY CMH	CHECKED BY KPD		
OPM NUMBER OPM-0633 6/21/2021	SHEET 2 OF 5 OPM-0633: Reviewed for Code Compliance by William Staehlin					

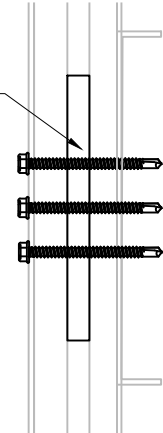


SEOR MUST DESIGN WALL BACKING AND WALL STRUCTURE  
 MINIMUM THICKNESS = 16 GA  
 MINIMUM Fy = 50 KSI  
 MINIMUM Fu = 65 KSI

(6) 1/4"-14 SMS @1" TO WALL STRUCTURE  
 6 LOCATIONS

UNIT BACKING (ASTM A1008)  
 MINIMUM THICKNESS 20 GA  
 MINIMUM Fy = 20 KSI  
 MINIMUM Fu = 42 KSI

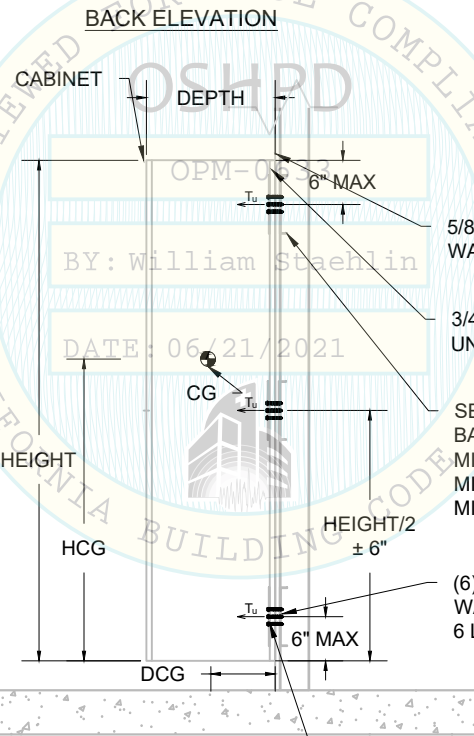
1/2" WOOD BOARD  
 SEE NOTE 3



TYPICAL DETAIL FOR PRODUCTS WITH BACKING THAT IS OFFSET FROM WALL

NOTES:

1. UNIT CONSTRUCTED OF 3/4" THICK WOOD BOARDS. SMS TO FASTEN THROUGH STEEL UNIT BACKING, WOOD UNIT BACKING, AND WALLBOARD TO THE STEEL WALL BACKING. THE SUM OF THE THICKNESSES OF THESE ITEMS MUST NOT BE GREATER THAN THE SPECIFIED MAXIMUM TOTAL THICKNESS, MT, OF THE SMS.
2. A SIGN MUST BE POSTED ON ALL CABINETS TO INDICATE THE MAXIMUM MEDIA WEIGHT ALLOWED INSIDE AND ON TOP OF THE CABINET, AS SHOWN IN THE TABLE ON STARTING ON SHEET 4.
3. FOR CABINETS WITH BACKING OFFSET FROM WALL, SMS WITH APPROPRIATE LENGTH OF LOAD BEARING AREA MUST BE DRILLED THROUGH 1/2" WOOD BOARD IN THE 1/2" GAP BETWEEN BACK OF CABINET AND WALL. BOARD MUST MEET THE MINIMUM EDGE DISTANCE REQUIRED FOR THE SMS AND MUST BE SECURED IN PLACE USING SCREWS, GLUE, OR OTHER MEANS SO THAT IT WILL REMAIN IN PLACE DURING THE INSTALLATION OF THE SMS. SEE DETAIL TO THE RIGHT.
4. FOR CABINETS WITH SLOPED TOPS, THE HEIGHT REPRESENTS THE HIGHEST POINT OF THE SLOPE



5/8" THICK MAX WALLBOARD  
 3/4" THICK WOOD UNIT BACKING

SEOR MUST DESIGN WALL BACKING AND WALL STRUCTURE  
 MINIMUM THICKNESS = 16 GA  
 MINIMUM Fy = 50 KSI  
 MINIMUM Fu = 65 KSI

(6) 1/4"-14 SMS @1" TO WALL STRUCTURE  
 6 LOCATIONS

UNIT BACKING (ASTM A1008)  
 MINIMUM THICKNESS 20 GA  
 MINIMUM Fy = 20 KSI  
 MINIMUM Fu = 42 KSI



*Kevin Dommer*  
 05/27/2021

<b>TITLE</b> OFS CAROLINA MILE MARKER UPPER STORAGE CABINETS	<b>MANUFACTURER</b> OFS	<b>PROJECT NO</b> 1CMH00005.000	<b>EQUIPMENT</b> OFS CAROLINA MILE MARKER UPPER STORAGE CABINETS WITH PRODUCT NUMBERS ENDING IN USCGBS OR USCGBS.	
	<b>PRODUCT LINE</b> CAROLINA MILE MARKER	<b>DATE</b> 05/27/2021		
	<b>EQUIPMENT DESCRIPTION</b> WALL ATTACHED STORAGE CABINET	<b>DESIGN</b> CMH	<b>DRAWN BY</b> CMH	<b>CHECKED BY</b> KPD
<b>OPM NUMBER</b> OPM-0633 6/21/2021	OPM-0633: Reviewed for Code Compliance by William Staehlin			<b>JENSEN HUGHES</b> 100 Quannapowitt Parkway Suite 401 Wakefield, MA 01880 O: +1 857-259-4968 jensenhughes.com

**CABINET DIMENSIONS, WEIGHTS, AND SCREW FORCES**

ITEM	DIMENSIONS			CENTER OF GRAVITY			WEIGHT					MAX FORCES	
	LENGTH [in]	DEPTH [in]	HEIGHT [in]	HCG [in]	LCG [in]	DCG [in]	CABINET WT [lb]	COUNTER WT [lb]	MEDIA WT INSIDE [lb]	MEDIA WT TOP [lb]	TOTAL WT [lb]	Tu [lb]	Vu [lb]
MM-121835	12.00	18.25	35.00	21.53	6.00	9.13	80	12	146	50	288	586	86
MM-151835	15.00	18.25	35.00	21.68	7.50	9.13	63	15	183	62	323	334	104
MM-181835	18.00	18.25	35.00	21.80	9.00	9.13	65	18	220	75	377	282	121
MM-211835	21.00	18.25	35.00	21.88	10.50	9.13	68	21	256	87	432	266	138
MM-241835	24.00	18.25	35.00	21.95	12.00	9.13	70	24	293	100	486	292	153
MM-121838	12.00	18.25	38.00	23.14	6.00	9.13	63	12	159	50	284	611	88
MM-151838	15.00	18.25	38.00	23.27	7.50	9.13	68	15	199	62	344	345	107
MM-181838	18.00	18.25	38.00	23.39	9.00	9.13	70	18	238	75	401	287	125
MM-211838	21.00	18.25	38.00	23.48	10.50	9.13	73	21	278	87	459	269	142
MM-241838	24.00	18.25	38.00	23.52	12.00	9.13	78	24	318	100	520	289	159
MM-121841	12.00	18.25	41.50	25.02	6.00	9.13	65	12	174	50	300	638	90
MM-151841	15.00	18.25	41.50	25.18	7.50	9.13	68	15	217	62	362	353	110
MM-181841	18.00	18.25	41.50	25.30	9.00	9.13	70	18	260	75	423	291	129
MM-211841	21.00	18.25	41.50	25.38	10.50	9.13	73	21	304	87	485	270	147
MM-241841	24.00	18.25	41.50	25.45	12.00	9.13	75	24	347	100	546	283	164
MM-121844	12.00	18.25	44.50	26.60	6.00	9.13	68	12	186	50	316	665	93
MM-151844	15.00	18.25	44.50	26.78	7.50	9.13	70	15	233	62	380	363	113
MM-181844	18.00	18.25	44.50	26.89	9.00	9.13	73	18	279	75	445	297	132
MM-211844	21.00	18.25	44.50	26.98	10.50	9.13	75	21	326	87	509	274	151
MM-241844	24.00	18.25	44.50	27.04	12.00	9.13	78	24	372	100	574	283	170
MM-121847	12.00	18.25	47.50	28.19	6.00	9.13	70	12	199	50	330	691	95
MM-151847	15.00	18.25	47.50	28.36	7.50	9.13	73	15	248	62	399	375	116
MM-181847	18.00	18.25	47.50	28.48	9.00	9.13	75	18	298	75	466	304	136
MM-211847	21.00	18.25	47.50	28.56	10.50	9.13	78	21	348	87	534	279	156
MM-241847	24.00	18.25	47.50	28.64	12.00	9.13	80	24	397	100	601	283	175
MM-121850	12.00	18.25	50.50	29.76	6.00	9.13	73	12	211	50	346	718	98
MM-151850	15.00	18.25	50.50	29.94	7.50	9.13	75	15	264	62	416	386	119
MM-181850	18.00	18.25	50.50	30.05	9.00	9.13	78	18	317	75	488	312	140
MM-211850	21.00	18.25	50.50	30.15	10.50	9.13	80	21	370	87	558	284	160
MM-241850	24.00	18.25	50.50	30.21	12.00	9.13	83	24	422	100	629	284	180
MM-122435	12.00	24.25	35.00	21.71	6.00	12.13	65	16	195	66	342	992	111
MM-152435	15.00	24.25	35.00	21.84	7.50	12.13	68	20	243	83	414	569	135
MM-182435	18.00	24.25	35.00	21.95	9.00	12.13	70	24	292	99	485	481	158
MM-212435	21.00	24.25	35.00	22.02	10.50	12.13	73	28	340	116	557	456	179
MM-242435	24.00	24.25	35.00	22.08	12.00	12.13	75	32	389	133	628	452	199
MM-122438	12.00	24.25	38.00	23.32	6.00	12.13	68	16	211	66	361	1034	114
MM-152438	15.00	24.25	38.00	23.44	7.50	12.13	73	20	264	83	440	586	139
MM-182438	18.00	24.25	38.00	23.55	9.00	12.13	75	24	317	99	515	490	162
MM-212438	21.00	24.25	38.00	23.62	10.50	12.13	78	28	370	116	591	460	185
MM-242438	24.00	24.25	38.00	23.66	12.00	12.13	83	32	422	133	670	454	207
MM-122441	12.00	24.25	41.00	24.93	6.00	12.13	70	16	228	66	380	1075	116
MM-152441	15.00	24.25	41.00	25.07	7.50	12.13	73	20	285	83	461	599	142
MM-182441	18.00	24.25	41.00	25.18	9.00	12.13	75	24	342	99	540	496	166
MM-212441	21.00	24.25	41.00	25.25	10.50	12.13	78	28	399	116	621	462	190
MM-242441	24.00	24.25	41.00	25.31	12.00	12.13	80	32	456	133	700	452	213
MM-122444	12.00	24.25	44.00	26.52	6.00	12.13	73	16	245	66	400	1120	119
MM-152444	15.00	24.25	44.00	26.67	7.50	12.13	75	20	306	83	483	616	145
MM-182444	18.00	24.25	44.00	26.77	9.00	12.13	78	24	367	99	568	507	171
MM-212444	21.00	24.25	44.00	26.85	10.50	12.13	80	28	428	116	652	468	196
MM-242444	24.00	24.25	44.00	26.91	12.00	12.13	83	32	489	133	736	456	220
MM-122447	12.00	24.25	47.00	28.12	6.00	12.13	75	16	261	66	418	1163	123
MM-152447	15.00	24.25	47.00	28.26	7.50	12.13	78	20	326	83	507	635	150
MM-182447	18.00	24.25	47.00	28.37	9.00	12.13	80	24	392	99	595	518	176
MM-212447	21.00	24.25	47.00	28.44	10.50	12.13	83	28	457	116	684	477	202
MM-242447	24.00	24.25	47.00	28.50	12.00	12.13	85	32	522	133	772	461	227
MM-122450	12.00	24.25	50.00	29.69	6.00	12.13	78	16	278	66	438	1210	126
MM-152450	15.00	24.25	50.00	29.84	7.50	12.13	80	20	347	83	530	654	154
MM-182450	18.00	24.25	50.00	29.95	9.00	12.13	83	24	417	99	623	531	181
MM-212450	21.00	24.25	50.00	30.03	10.50	12.13	85	28	486	116	715	485	207
MM-242450	24.00	24.25	50.00	30.08	12.00	12.13	88	32	556	133	808	468	234
MM-121853	12.00	18.25	53.50	31.40	6.00	9.13	70	12	224	50	356	734	100



*Kevin Dommer*  
05/27/2021

TITLE  
**OFS CAROLINA MILE MARKER UPPER STORAGE CABINETS**

OPM NUMBER  
OPM-0633  
6/21/2021

MANUFACTURER  
OFS

PRODUCT LINE  
CAROLINA MILE MARKER

EQUIPMENT DESCRIPTION  
WALL ATTACHED STORAGE CABINET

PROJECT NO  
1CMH00005.000

DATE  
05/27/2021

DESIGN  
CMH

DRAWN BY  
CMH

CHECKED BY  
KPD

SHEET  
4 OF 5

EQUIPMENT  
OFS CAROLINA MILE MARKER UPPER STORAGE CABINETS WITH PRODUCT NUMBERS ENDING IN USCGB OR USCGBS.

**JENSEN HUGHES**

100 Quannapowitt Parkway  
Suite 401  
Wakefield, MA 01880  
O: +1 857-259-4968  
jensenhughes.com

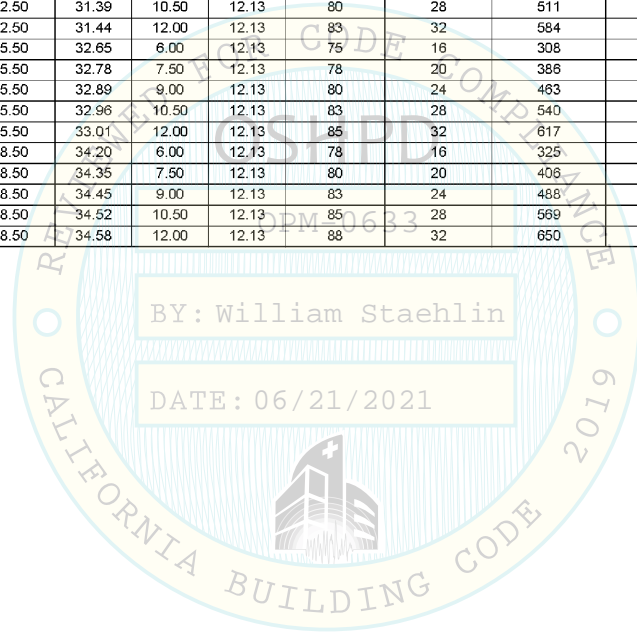
6 of 7

**CABINET DIMENSIONS, WEIGHTS, AND SCREW FORCES (CON'T)**


ITEM	DIMENSIONS			CENTER OF GRAVITY			WEIGHT					MAX FORCES	
	LENGTH [in]	DEPTH [in]	HEIGHT [in]	HCG [in]	LCG [in]	DCG [in]	CABINET WT [lb]	COUNTER WT [lb]	MEDIA WT INSIDE [lb]	MEDIA WT TOP [lb]	TOTAL WT [lb]	Tu [lb]	Vu [lb]
MM-151853	15.00	18.25	53.50	31.56	7.50	9.13	73	15	280	62	430	393	121
MM-181853	18.00	18.25	53.50	31.68	9.00	9.13	75	18	336	75	503	316	143
MM-211853	21.00	18.25	53.50	31.76	10.50	9.13	78	21	392	87	578	287	164
MM-241853	24.00	18.25	53.50	31.83	12.00	9.13	80	24	448	100	651	284	184
MM-121856	12.00	18.25	56.50	32.96	6.00	9.13	73	12	236	50	371	763	103
MM-151856	15.00	18.25	56.50	33.13	7.50	9.13	75	15	295	62	448	405	125
MM-181856	18.00	18.25	56.50	33.24	9.00	9.13	78	18	354	75	525	324	147
MM-211856	21.00	18.25	56.50	33.33	10.50	9.13	80	21	414	87	602	293	168
MM-241856	24.00	18.25	56.50	33.39	12.00	9.13	83	24	473	100	679	286	190
MM-122443	12.00	24.25	43.50	26.35	6.00	12.13	65	16	242	66	389	1091	117
MM-152443	15.00	24.25	43.50	26.47	7.50	12.13	68	20	302	83	473	604	143
MM-182443	18.00	24.25	43.50	26.57	9.00	12.13	70	24	363	99	556	498	169
MM-212443	21.00	24.25	43.50	26.64	10.50	12.13	73	28	423	116	640	462	193
MM-242443	24.00	24.25	43.50	26.69	12.00	12.13	75	32	483	133	723	451	217
MM-122446	12.00	24.25	46.50	27.93	6.00	12.13	68	16	258	66	409	1137	121
MM-152446	15.00	24.25	46.50	28.04	7.50	12.13	73	20	323	83	499	626	148
MM-182446	18.00	24.25	46.50	28.14	9.00	12.13	75	24	388	99	586	512	174
MM-212446	21.00	24.25	46.50	28.21	10.50	12.13	78	28	452	116	674	472	200
MM-242446	24.00	24.25	46.50	28.25	12.00	12.13	83	32	517	133	764	459	225
MM-122449	12.00	24.25	49.50	29.51	6.00	12.13	70	16	275	66	427	1181	124
MM-152449	15.00	24.25	49.50	29.64	7.50	12.13	73	20	344	83	520	643	151
MM-182449	18.00	24.25	49.50	29.74	9.00	12.13	75	24	413	99	611	522	178
MM-212449	21.00	24.25	49.50	29.81	10.50	12.13	78	28	481	116	703	479	205
MM-242449	24.00	24.25	49.50	29.87	12.00	12.13	80	32	550	133	795	462	231
MM-122452	12.00	24.25	52.50	31.08	6.00	12.13	73	16	292	66	447	1228	127
MM-152452	15.00	24.25	52.50	31.22	7.50	12.13	75	20	365	83	542	662	156
MM-182452	18.00	24.25	52.50	31.31	9.00	12.13	78	24	438	99	639	536	184
MM-212452	21.00	24.25	52.50	31.39	10.50	12.13	80	28	511	116	734	488	211
MM-242452	24.00	24.25	52.50	31.44	12.00	12.13	83	32	584	133	831	470	238
MM-122455	12.00	24.25	55.50	32.65	6.00	12.13	75	16	308	66	466	1273	131
MM-152455	15.00	24.25	55.50	32.78	7.50	12.13	78	20	386	83	566	683	160
MM-182455	18.00	24.25	55.50	32.89	9.00	12.13	80	24	463	99	666	549	189
MM-212455	21.00	24.25	55.50	32.96	10.50	12.13	83	28	540	116	767	499	217
MM-242455	24.00	24.25	55.50	33.01	12.00	12.13	85	32	617	133	866	478	245
MM-122458	12.00	24.25	58.50	34.20	6.00	12.13	78	16	325	66	485	1321	134
MM-152458	15.00	24.25	58.50	34.35	7.50	12.13	80	20	406	83	589	704	164
MM-182458	18.00	24.25	58.50	34.45	9.00	12.13	83	24	488	99	694	564	194
MM-212458	21.00	24.25	58.50	34.52	10.50	12.13	85	28	569	116	798	510	223
MM-242458	24.00	24.25	58.50	34.58	12.00	12.13	88	32	650	133	903	487	252

BY: William Staehlin

DATE: 06/21/2021



*Kevin Dommer*  
05/27/2021

TITLE <b>OFS CAROLINA MILE MARKER UPPER STORAGE CABINETS</b>	MANUFACTURER OFS	PROJECT NO 1CMH00005.000	EQUIPMENT OFS CAROLINA MILE MARKER UPPER STORAGE CABINETS WITH PRODUCT NUMBERS ENDING IN USCGB OR USCGBS.	 100 Quannapowitt Parkway Suite 401 Wakefield, MA 01880 O: +1 857-259-4968 W: jensenhughes.com
	PRODUCT LINE CAROLINA MILE MARKER	DATE 05/27/2021		
	EQUIPMENT DESCRIPTION WALL ATTACHED STORAGE CABINET	DESIGN CMH		
OPM NUMBER OPM-0633 6/21/2021	SHEET 5 OF 5 OPM-0633: Reviewed for Code Compliance by William Staehlin			7 of 7