



DEPARTMENT OF HEALTH CARE ACCESS AND INFORMATION
FACILITIES DEVELOPMENT DIVISION

APPLICATION FOR HCAI SPECIAL SEISMIC
CERTIFICATION PREAPPROVAL (OSP)

OFFICE USE ONLY

APPLICATION #: OSP-0107

HCAI Special Seismic Certification Preapproval (OSP)

Type: New Renewal

Manufacturer Information

Manufacturer: Mitsubishi Electric Power Products, Inc.

Manufacturer's Technical Representative: Robert Durbin

Mailing Address: 530 Keystone Drive, Warrendale, PA 15086

Telephone: (724) 778-5217

Email: robert.durbin@meppi.com

Product Information

Product Name: UPS and Batteries

Product Type: UPS

Product Model Number: 9900A, 9900B Series UPS (See Attachment)

General Description: Uninterruptible Power Supply

Mounting Description: Rigid, Floor Mounted

Tested Seismic Enhancements: None

Applicant Information

Applicant Company Name: TRU Compliance, by Structural Integrity Associates, Inc.

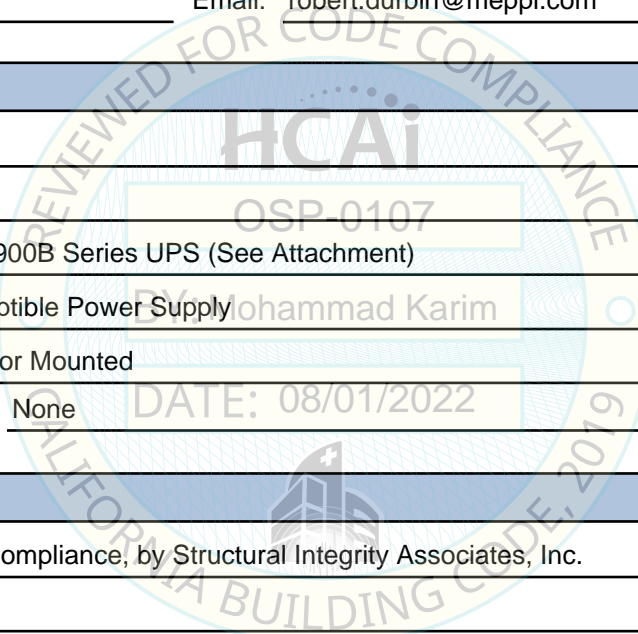
Contact Person: Galen Reid

Mailing Address: 233 SW Wilson Suite 101, Bend, OR 97702

Telephone: (541) 604-7225

Email: greid@structint.com

Title: Director, TRU Compliance





**DEPARTMENT OF HEALTH CARE ACCESS AND INFORMATION
FACILITIES DEVELOPMENT DIVISION**

California Licensed Structural Engineer Responsible for the Engineering and Test Report(s)

Company Name: STRUCTURAL INTEGRITY ASSOCIATES, INC.

Name: Andrew Coughlin California License Number: S6082

Mailing Address: 5215 Hellyer Ave, Suite 101, San Jose, CA 95138-1025

Telephone: (415) 635-8461 Email: acoughlin@structint.com

Certification Method

GR-63-Core ICC-ES AC156 IEEE 344 IEEE 693 NEBS 3

Other (Please Specify): _____

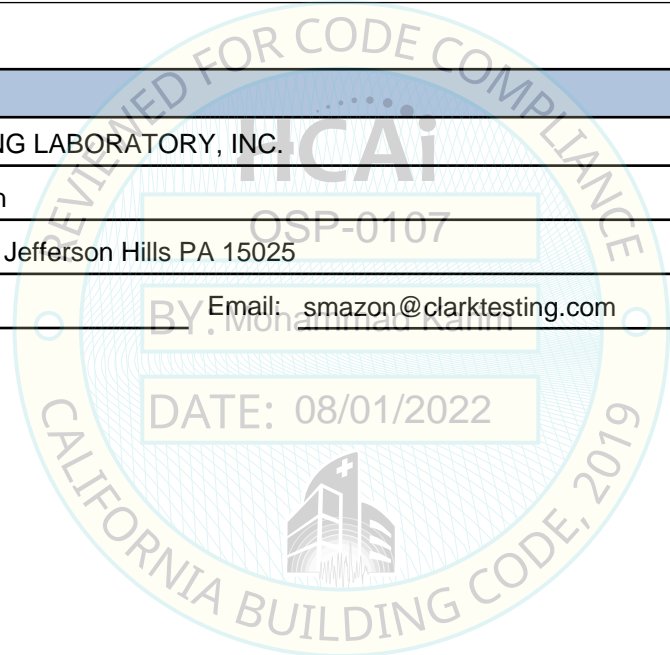
Testing Laboratory

Company Name: CLARK TESTING LABORATORY, INC.

Contact Person: Suzanne Mazon

Mailing Address: 1801 Route 51, Jefferson Hills PA 15025

Telephone: (412) 387-1001 Email: smazon@clarktesting.com





**DEPARTMENT OF HEALTH CARE ACCESS AND INFORMATION
FACILITIES DEVELOPMENT DIVISION**

Seismic Parameters

Design Basis of Equipment or Components (F_p/W_p) = 1.44

SDS (Design spectral response acceleration at short period, g) = 2.0

a_p (Amplification factor) = 1.0

R_p (Response modification factor) = 2.5

Ω_0 (System overstrength factor) = 2.0

I_p (Importance factor) = 1.5

z/h (Height ratio factor) = 1 and 0

Natural frequencies (Hz) = See Attachment

Overall dimensions and weight = See Attachment

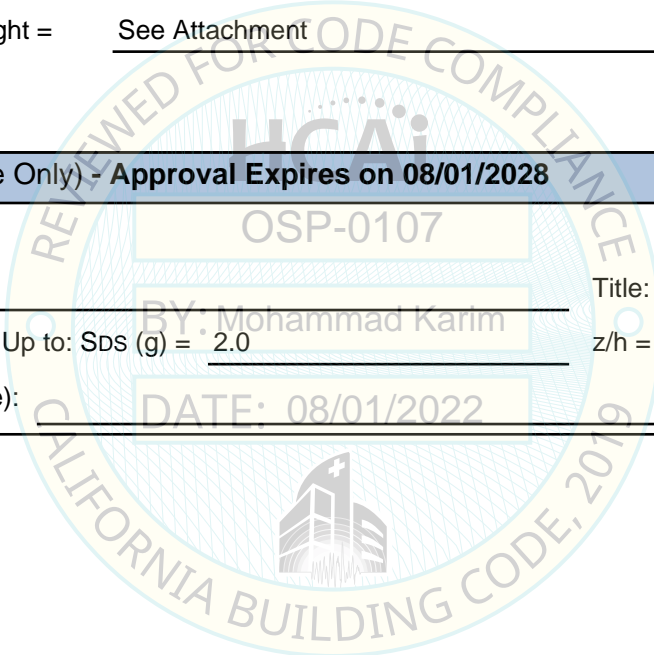
HCAI Approval (For Office Use Only) - Approval Expires on 08/01/2028

Date: 8/1/2022

Name: Mohammad Karim Title: Supervisor, Health Facilities

Special Seismic Certification Valid Up to: SDS (g) = 2.0 z/h = See Above

Condition of Approval (if applicable): DATE: 08/01/2022



SPECIAL SEISMIC CERTIFICATION CERTIFIED COMPONENT MATRIX

2000560-CR-001-R1



Manufacturer: Mitsubishi Electrical Power Products, Inc.	TABLE 1
Model Line: 9900A, 9900B UPS	

Certified Product Construction Summary:
Painted carbon steel enclosure. Certified units must be constructed in compliance with construction standards and detailing at time of testing.

Certified Options Summary:
Input/Output VAC: 480/480

Mounting Configuration:
Base mounted - rigid
Note: Installed mounting configuration must be of similar configuration and equivalent strength and stiffness to those tested.

Building Code: CBC 2019 **Seismic Certification Limits:** $S_{DS} = 2.0g \quad z/h = 1.0$ $I_p = 1.5$
 $S_{DS} = 2.0g \quad z/h = 0.0$

Model Line	Model	Dimensions (in)			Weight (lb)	Notes	UUT
		Depth	Width	Height			
9900A UPS	M9900A-E-080-480-480-N	32.8	27.6	80.6	772		Extrap.
	M9900A-E-080-480-480	32.8	27.6	80.6	772		Extrap.
	99AE-EA0080KA26	32.8	27.6	80.6	772	Same as E-080-480-480 Beige - Factory Label	Extrap.
	99AE-EA0080K	32.8	27.6	80.6	772	Same as E-080-480-480 Beige - Field Label	Extrap.
	99AE-EB0080KA26	32.8	27.6	80.6	772	Same as E-080-480-480 Black - Factory Label	Extrap.
	99AE-EB0080K	32.8	27.6	80.6	772	Same as E-080-480-480 Black - Field Label	Extrap.
	M9900A-A-080-480-480	32.8	27.6	80.6	855		1
	M9900A-E-100-480-480-N	32.8	27.6	80.6	772		Interp.
	M9900A-E-100-480-480	32.8	27.6	80.6	772		Interp.
	99AE-EA0100KA26	32.8	27.6	80.6	772	Same as E-100-480-480 Beige - Factory Label	Interp.
	99AE-EA0100K	32.8	27.6	80.6	772	Same as E-100-480-480 Beige - Field Label	Interp.
	99AE-EB0100KA26	32.8	27.6	80.6	772	Same as E-100-480-480 Black - Factory Label	Interp.
	99AE-EB0100K	32.8	27.6	80.6	772	Same as E-100-480-480 Black - Field Label	Interp.
	M9900A-A-100-480-480	32.8	27.6	80.6	855		Interp.
	M9900A-E-150-480-480-N	32.8	27.6	80.6	860		Interp.
	M9900A-E-150-480-480	32.8	27.6	80.6	860		Interp.

SPECIAL SEISMIC CERTIFICATION CERTIFIED COMPONENT MATRIX

2000560-CR-001-R1



Manufacturer: Mitsubishi Electrical Power Products, Inc.	TABLE 1
Model Line: 9900A, 9900B UPS	

Certified Product Construction Summary:
Painted carbon steel enclosure. Certified units must be constructed in compliance with construction standards and detailing at time of testing.

Certified Options Summary:
Input/Output VAC: 480/480

Mounting Configuration:
Base mounted - rigid
Note: Installed mounting configuration must be of similar configuration and equivalent strength and stiffness to those tested.

Building Code: CBC 2019 **Seismic Certification Limits:** $S_{DS} = 2.0g \quad z/h = 1.0$ $I_p = 1.5$
 $S_{DS} = 2.0g \quad z/h = 0.0$

Model Line	Model	Dimensions (in)			Weight (lb)	Notes	UUT
		Depth	Width	Height			
9900A UPS	99AE-EA0150KA26	32.8	27.6	80.6	860	Same as E-150-480-480 Beige - Factory Label	Interp.
	99AE-EA0150K	32.8	27.6	80.6	860	Same as E-150-480-480 Beige - Field Label	Interp.
	99AE-EB0150KA26	32.8	27.6	80.6	860	Same as E-150-480-480 Black - Factory Label	Interp.
	99AE-EB0150K	32.8	27.6	80.6	860	Same as E-150-480-480 Black - Field Label	Interp.
	M9900A-A-150-480-480	32.8	35.4	80.6	1,160		Interp.
	M9900A-E-160-480-480-N	32.8	27.6	80.6	860		Interp.
	M9900A-E-160-480-480	32.8	27.6	80.6	860		Interp.
	99AE-EA0160KA26	32.8	27.6	80.6	860	Same as E-160-480-480 Beige - Factory Label	Interp.
	99AE-EA0160K	32.8	27.6	80.6	860	Same as E-160-480-480 Beige - Field Label	Interp.
	99AE-EB0160KA26	32.8	27.6	80.6	860	Same as E-160-480-480 Black - Factory Label	Interp.
	99AE-EB0160K	32.8	27.6	80.6	860	Same as E-160-480-480 Black - Field Label	Interp.
	M9900A-E-225-480-480-N	32.8	35.4	80.6	1,080		Interp.
	M9900A-E-225-480-480	32.8	35.4	80.6	1,080		Interp.
	99AE-EA0225KA26	32.8	35.4	80.6	1,080	Same as E-225-480-480 Beige - Factory Label	Interp.
	99AE-EA0225K	32.8	35.4	80.6	1,080	Same as E-225-480-480 Beige - Field Label	Interp.

TRU Compliance, by Structural Integrity Associates, Inc.
844-TRU-0200 | info@trucompliance.com

SPECIAL SEISMIC CERTIFICATION CERTIFIED COMPONENT MATRIX

2000560-CR-001-R1



Manufacturer: Mitsubishi Electrical Power Products, Inc.						TABLE 1	
Model Line: 9900A, 9900B UPS							
Certified Product Construction Summary: Painted carbon steel enclosure. Certified units must be constructed in compliance with construction standards and detailing at time of testing.							
Certified Options Summary: Input/Output VAC: 480/480							
Mounting Configuration: Base mounted - rigid Note: Installed mounting configuration must be of similar configuration and equivalent strength and stiffness to those tested.							
Building Code: CBC 2019						Seismic Certification Limits:	
						$S_{DS} = 2.0g \quad z/h = 1.0$ $S_{DS} = 2.0g \quad z/h = 0.0$	
						$I_p = 1.5$	
Model Line	Model	Dimensions (in)			Weight (lb)	Notes	UUT
		Depth	Width	Height			
9900A UPS	99AE-EB0225KA26	32.8	35.4	80.6	1,080	Same as E-225-480-480 Black - Factory Label	Interp.
	99AE-EB0225K	32.8	35.4	80.6	1,080	Same as E-225-480-480 Black - Field Label	Interp.
	M9900A-A-225-480-480	32.8	35.4	80.6	1,230		Interp.
9900B UPS	M9900B-A-300-480-480	32.7	55.1	80.7	2,360		Interp.
	99B-AA0300KA26	32.7	55.1	80.7	2,360	Same as A-300-480-480 Beige - Factory Label	Interp.
	99B-AA0300K	32.7	55.1	80.7	2,360	Same as A-300-480-480 Beige - Field Label	Interp.
	99B-AB0300KA26	32.7	55.1	80.7	2,360	Same as A-300-480-480 Black - Factory Label	Interp.
	99B-AB0300K	32.7	55.1	80.7	2,360	Same as A-300-480-480 Black - Field Label	Interp.
	M9900B-A-500-480-480	32.7	88.4	80.7	3,605		Interp.
	99B-AA0500KA26	32.7	88.4	80.7	3,605	Same as A-500-480-480 Beige - Factory Label	Interp.
	99B-AA0500K	32.7	88.4	80.7	3,605	Same as A-500-480-480 Beige - Field Label	Interp.
	99B-AB0500KA26	32.7	88.4	80.7	3,605	Same as A-500-480-480 Beige - Factory Label	Interp.
	99B-AB0500K	32.7	88.4	80.7	3,605	Same as A-500-480-480 Beige - Field Label	Interp.

SPECIAL SEISMIC CERTIFICATION CERTIFIED COMPONENT MATRIX

2000560-CR-001-R1



Manufacturer: Mitsubishi Electrical Power Products, Inc.						TABLE 1	
Model Line: 9900A, 9900B UPS							
Certified Product Construction Summary: Painted carbon steel enclosure. Certified units must be constructed in compliance with construction standards and detailing at time of testing.							
Certified Options Summary: Input/Output VAC: 480/480							
Mounting Configuration: Base mounted - rigid Note: Installed mounting configuration must be of similar configuration and equivalent strength and stiffness to those tested.							
Building Code: CBC 2019						Seismic Certification Limits:	
						$S_{DS} = 2.0g \quad z/h = 1.0$ $S_{DS} = 2.0g \quad z/h = 0.0$	
						$I_p = 1.5$	
Model Line	Model	Dimensions (in)			Weight (lb)	Notes	UUT
		Depth	Width	Height			
9900B UPS	M9900B-A-750-480-480	33.0	106.9	80.6	4,470		2
	99B-AA0750KA26	33.0	106.9	80.6	4,470	Same as A-300-480-480 Beige - Factory Label	Interp.
	99B-AA0750K	33.0	106.9	80.6	4,470	Same as A-300-480-480 Beige - Field Label	Interp.
	99B-AB0750KA26	33.0	106.9	80.6	4,470	Same as A-300-480-480 Black - Factory Label	Interp.
	99B-AB0750K	33.0	106.9	80.6	4,470	Same as A-300-480-480 Black - Field Label	Interp.
9900A UPS 65kAIC Rated	M9900A-E-080-480-480-N-65	33.0	27.0	78.5	798		Interp.
	M9900A-E-080-480-A02	33.0	27.0	78.5	798		3
	99AE-EA0080KA16	33.0	27.0	78.5	798	Same as E-080-480-A02 Beige - Factory Label	Interp.
	99AE-EA0080KA02	33.0	27.0	78.5	798	Same as E-080-480-A02 Beige - Field Label	Interp.
	99AE-EB0080KA16	33.0	27.0	78.5	798	Same as E-080-480-A02 Black - Factory Label	Interp.
	99AE-EB0080KA02	33.0	27.0	78.5	798	Same as E-080-480-A02 Black - Field Label	Interp.
	M9900A-A-080-480-480-65	33.0	27.0	78.5	855		Interp.
	M9900A-A-080-480-A02	33.0	27.0	78.5	855		Interp.
	M9900A-E-100-480-480-N-65	33.0	27.0	78.5	772		Interp.
	M9900A-E-100-480-A02	33.0	27.0	78.5	772		Interp.
	99AE-EA0100KA16	33.0	27.0	78.5	772	Same as E-100-480-A02 Beige - Factory Label	Interp.

SPECIAL SEISMIC CERTIFICATION CERTIFIED COMPONENT MATRIX

2000560-CR-001-R1



Manufacturer: Mitsubishi Electrical Power Products, Inc.	TABLE 1
Model Line: 9900A, 9900B UPS	

Certified Product Construction Summary:
Painted carbon steel enclosure. Certified units must be constructed in compliance with construction standards and detailing at time of testing.

Certified Options Summary:
Input/Output VAC: 480/480

Mounting Configuration:
Base mounted - rigid
Note: Installed mounting configuration must be of similar configuration and equivalent strength and stiffness to those tested.

Building Code: CBC 2019 **Seismic Certification Limits:** $S_{DS} = 2.0g$ $z/h = 1.0$ $I_p = 1.5$
 $S_{DS} = 2.0g$ $z/h = 0.0$

Model Line	Model	Dimensions (in)			Weight (lb)	Notes	UUT
		Depth	Width	Height			
9900A UPS 65kAIC Rated	99AE-EA0100KA02	33.0	27.0	78.5	772	Same as E-100-480-A02 Beige - Field Label	Interp.
	99AE-EB0100KA16	33.0	27.0	78.5	772	Same as E-100-480-A02 Black - Factory Label	Interp.
	99AE-EB0100KA02	33.0	27.0	78.5	772	Same as E-100-480-A02 Black - Field Label	Interp.
	M9900A-A-100-480-480-65	33.0	27.0	78.5	855		Interp.
	M9900A-A-100-480-A02	33.0	27.0	78.5	855		Interp.
	M9900A-E-150-480-480-N-65	33.0	27.0	78.5	860		Interp.
	M9900A-E-150-480-A02	33.0	27.0	78.5	860		Interp.
	99AE-EA0150KA16	33.0	27.0	78.5	860	Same as E-150-480-A02 Beige - Factory Label	Interp.
	99AE-EA0150KA02	33.0	27.0	78.5	860	Same as E-150-480-A02 Beige - Field Label	Interp.
	99AE-EB0150KA16	33.0	27.0	78.5	860	Same as E-150-480-A02 Black - Factory Label	Interp.
	99AE-EB0150KA02	33.0	27.0	78.5	860	Same as E-150-480-A02 Black - Field Label	Interp.
	M9900A-A-150-480-480-65	33.0	35.0	78.5	1,160		Interp.
	M9900A-A-150-480-A02	33.0	35.0	78.5	1,160		Interp.
	M9900A-E-160-480-480-N-65	33.0	35.0	78.5	860		Interp.
	M9900A-E-160-480-A02	33.0	35.0	78.5	860		Interp.
	99AE-EA0160KA16	33.0	35.0	78.5	860	Same as E-160-480-A02 Beige - Factory Label	Interp.

SPECIAL SEISMIC CERTIFICATION CERTIFIED COMPONENT MATRIX

2000560-CR-001-R1



Manufacturer: Mitsubishi Electrical Power Products, Inc.						TABLE 1	
Model Line: 9900A, 9900B UPS							
Certified Product Construction Summary: Painted carbon steel enclosure. Certified units must be constructed in compliance with construction standards and detailing at time of testing.							
Certified Options Summary: Input/Output VAC: 480/480							
Mounting Configuration: Base mounted - rigid Note: Installed mounting configuration must be of similar configuration and equivalent strength and stiffness to those tested.							
Building Code: CBC 2019						Seismic Certification Limits:	
						$S_{DS} = 2.0g \quad z/h = 1.0$ $S_{DS} = 2.0g \quad z/h = 0.0$	
						$I_p = 1.5$	
Model Line	Model	Dimensions (in)			Weight (lb)	Notes	UUT
		Depth	Width	Height			
9900A UPS 65kAIC Rated	99AE-EA0160KA02	33.0	35.0	78.5	860	Same as E-160-480-A02 Beige - Field Label	Interp.
	99AE-EB0160KA16	33.0	35.0	78.5	860	Same as E-160-480-A02 Black - Factory Label	Interp.
	99AE-EB0160KA02	33.0	35.0	78.5	860	Same as E-160-480-A02 Black - Field Label	Interp.
	M9900A-E-225-480-480-N-65	33.0	35.0	78.5	1,094		Interp.
	M9900A-E-225-480-A02	33.0	35.0	78.5	1,094		4
	99AE-EA0225KA16	33.0	35.0	78.5	1,094	Same as E-225-480-A02 Beige - Factory Label	Interp.
	99AE-EA0225KA02	33.0	35.0	78.5	1,094	Same as E-225-480-A02 Beige - Field Label	Interp.
	99AE-EB0225KA16	33.0	35.0	78.5	1,094	Same as E-225-480-A02 Black - Factory Label	Interp.
	99AE-EB0225KA02	33.0	35.0	78.5	1,094	Same as E-225-480-A02 Black - Field Label	Interp.
9900B UPS 65 kAIC Rated	M9900B-A-300-480-A02	33.0	35.0	78.5	1,094		Extrap.
	99B-AA0300KA16	33.0	35.0	78.5	1,094	Same as A-300-480-A02 Beige - Factory Label	Extrap.
	99B-AA0300KA02	33.0	35.0	78.5	1,094	Same as A-300-480-A02 Beige - Field Label	Extrap.
	99B-AB0300KA16	33.0	35.0	78.5	1,094	Same as A-300-480-A02 Beige - Factory Label	Extrap.
	99B-AB0300KA02	33.0	35.0	78.5	1,094	Same as A-300-480-A02 Beige - Field Label	Extrap.

TRU Compliance, by Structural Integrity Associates, Inc.
844-TRU-0200 | info@trucompliance.com

SPECIAL SEISMIC CERTIFICATION CERTIFIED COMPONENT MATRIX

2000560-CR-001-R1



Manufacturer: Mitsubishi Electrical Power Products, Inc.	TABLE 1
Model Line: 9900A, 9900B UPS	

Certified Product Construction Summary:
Painted carbon steel enclosure. Certified units must be constructed in compliance with construction standards and detailing at time of testing.

Certified Options Summary:
Input/Output VAC: 480/480

Mounting Configuration:
Base mounted - rigid
Note: Installed mounting configuration must be of similar configuration and equivalent strength and stiffness to those tested.

Building Code: CBC 2019 **Seismic Certification Limits:** $S_{DS} = 2.0g$ $z/h = 1.0$ $I_p = 1.5$
 $S_{DS} = 2.0g$ $z/h = 0.0$

Model Line	Model	Dimensions (in)			Weight (lb)	Notes	UUT
		Depth	Width	Height			
9900B UPS 65 kAIC Rated	M9900B-A-500-480-A02	33.0	35.0	78.5	1,094		Extrap.
	99B-AA0500KA16	33.0	35.0	78.5	1,094	Same as A-500-480-A02 Beige - Factory Label	Extrap.
	99B-AA0500KA02	33.0	35.0	78.5	1,094	Same as A-500-480-A02 Beige - Field Label	Extrap.
	99B-AB0500KA16	33.0	35.0	78.5	1,094	Same as A-500-480-A02 Black - Factory Label	Extrap.
	99B-AB0500KA02	33.0	35.0	78.5	1,094	Same as A-500-480-A02 Black - Field Label	Extrap.
	M9900B-A-750-480-A02	33.0	35.0	78.5	1,094		Extrap.
	99B-AA0750KA16	33.0	35.0	78.5	1,094	Same as A-750-480-A02 Beige - Factory Label	Extrap.
	99B-AA0750KA02	33.0	35.0	78.5	1,094	Same as A-750-480-A02 Beige - Field Label	Extrap.
	99B-AB0750KA16	33.0	35.0	78.5	1,094	Same as A-750-480-A02 Black - Factory Label	Extrap.
	99B-AB0750KA02	33.0	35.0	78.5	1,094	Same as A-750-480-A02 Black - Field Label	Extrap.
	M9900B-A-300-480-A03	33.0	35.0	78.5	1,094		Extrap.
	99B-AA0300KA28	33.0	35.0	78.5	1,094	Same as A-300-480-A03 Beige - Factory Label	Extrap.
	99B-AA0300KA03	33.0	35.0	78.5	1,094	Same as A-300-480-A03 Beige - Field Label	Extrap.
	99B-AB0300KA28	33.0	35.0	78.5	1,094	Same as A-300-480-A03 Black - Factory Label	Extrap.

TRU Compliance, by Structural Integrity Associates, Inc.
844-TRU-0200 | info@trucompliance.com

SPECIAL SEISMIC CERTIFICATION CERTIFIED COMPONENT MATRIX

2000560-CR-001-R1



Manufacturer: Mitsubishi Electrical Power Products, Inc.	TABLE 1
Model Line: 9900A, 9900B UPS	

Certified Product Construction Summary:
Painted carbon steel enclosure. Certified units must be constructed in compliance with construction standards and detailing at time of testing.

Certified Options Summary:
Input/Output VAC: 480/480

Mounting Configuration:
Base mounted - rigid
Note: Installed mounting configuration must be of similar configuration and equivalent strength and stiffness to those tested.

Building Code: CBC 2019 **Seismic Certification Limits:** $S_{DS} = 2.0g \quad z/h = 1.0$ $I_p = 1.5$
 $S_{DS} = 2.0g \quad z/h = 0.0$

Model Line	Model	Dimensions (in)			Weight (lb)	Notes	UUT
		Depth	Width	Height			
9900B UPS 65 kAIC Rated	99B-AB0300KA03	33.0	35.0	78.5	1,094	Same as A-300-480-A03 Black - Field Label	Extrap.
	M9900B-A-500-480-A03	33.0	35.0	78.5	1,094		Extrap.
	99B-AA0500KA28	33.0	35.0	78.5	1,094	Same as A-500-480-A03 Beige - Factory Label	Extrap.
	99B-AA0500KA05	33.0	35.0	78.5	1,094	Same as A-500-480-A03 Beige - Field Label	Extrap.
	99B-AB0500KA28	33.0	35.0	78.5	1,094	Same as A-500-480-A03 Black - Factory Label	Extrap.
	99B-AB0500KA05	33.0	35.0	78.5	1,094	Same as A-500-480-A03 Black - Field Label	Extrap.
	M9900B-A-750-480-A03	33.0	35.0	78.5	1,094		Extrap.
	99B-AA0750KA28	33.0	35.0	78.5	1,094	Same as A-750-480-A03 Beige - Factory Label	Extrap.
	99B-AA0750KA05	33.0	35.0	78.5	1,094	Same as A-750-480-A03 Beige - Field Label	Extrap.
	99B-AB0750KA28	33.0	35.0	78.5	1,094	Same as A-750-480-A03 Black - Factory Label	Extrap.
	99B-AB0750KA05	33.0	35.0	78.5	1,094	Same as A-750-480-A03 Black - Field Label	Extrap.

UNIT UNDER TEST (UUT) SUMMARY SHEET

2000560-CR-001-R1



Manufacturer: Mitsubishi Electrical Power Products, Inc.
Model Line: 9900A UPS

UUT	Unit Description	Report Number	Testing Lab	Year Tested	ISO 17025 Accredited?	S _{DS}	z/h	I _p
1	9900 UPS M9900A-A-080-480-480	EL: 9282 (UUT1)	Clark Testing	2010	YES	2.0	1.0	1.5
						2.0	0.0	
2	9900 UPS M9900B-A-750-480-480	EL: 9282 (UUT2)	Clark Testing	2010	YES	2.0	1.0	1.5
						2.0	0.0	
3	9900 UPS M9900A-E-080-480-A02	JID 17-00404 (UUT 1)	Clark Testing	2017	YES	2.0	1.0	1.5
						2.0	0.0	
4	9900 UPS M9900A-E-225-480-A02	JID 17-00404 (UUT 2)	Clark Testing	2017	YES	2.0	1.0	1.5
						2.0	0.0	

Notes:

UNIT UNDER TEST (UUT) SUMMARY SHEET



2000560-CR-001-R1

Manufacturer: Mitsubishi Electrical Power Products, Inc.	UUT 1
Model Line: 9900A UPS	
Model Number: M9900A-A-080-480-480	
Serial Number: 08-7M72732-07	

Product Construction Summary:
Painted carbon steel enclosure. Certified units must be constructed in compliance with construction standards and detailing at time of testing.

Options/Subcomponent Summary:
Internal components of certified units must be consistent with tested layout and selection.

<i>UUT Properties</i>						
Weight (lb)	Dimension (in)			Lowest Natural Frequency (Hz)		
	Depth	Width	Height	Front-Back	Side-Side	Vertical
855	32.8	27.6	80.6	5.6	5.8	27.9

<i>UUT Highest Passed Seismic Run Information</i>									
Building Code	Test Criteria	S _{DS} (g)	z/h	I _P	A _{FLX-H} (g)	A _{RIG-H} (g)	A _{FLX-V} (g)	A _{RIG-V} (g)	
CBC 2019	ICC-ES AC156	2.0 2.0	1.0 0.0	1.5	3.20	2.40	1.33	0.53	

Test Mounting Details:



Base mounted - rigid with four (4) 1/2" - 13 Grade 5 hex-head bolts with flat washers and lock washers.
A torque of 75 ft-lbs. was used for the 1/2" hardware.
Unit maintained structural integrity and remained functional per manufacturer requirement after shake table test.
Contents were included in testing per operating conditions.

UNIT UNDER TEST (UUT) SUMMARY SHEET

2000560-CR-001-R1



Manufacturer: Mitsubishi Electrical Power Products, Inc.	UUT 2
Model Line: 9900A UPS	
Model Number: M9900B-A-750-480-480 Serial Number: 10-7M73261EG001-01	

Product Construction Summary:
Painted carbon steel enclosure. Certified units must be constructed in compliance with construction standards and detailing at time of testing.

Options/Subcomponent Summary:
Internal components of certified units must be consistent with tested layout and selection.

<i>UUT Properties</i>						
Weight (lb)	Dimension (in)			Lowest Natural Frequency (Hz)		
	Depth	Width	Height	Front-Back	Side-Side	Vertical
4,470	33.0	98.4	80.6	7.7	9.7	26.9

<i>UUT Highest Passed Seismic Run Information</i>									
Building Code	Test Criteria	S _{DS} (g)	z/h	I _P	A _{FLX-H} (g)	A _{RIG-H} (g)	A _{FLX-V} (g)	A _{RIG-V} (g)	
CBC 2019	ICC-ES AC156	2.0	1.0	1.5	3.20	2.40	1.33	0.53	
		2.0	0.0						

Test Mounting Details:



Base mounted - rigid with twelve (12) 5/8" - 11 Grade 5 hex-head bolts with flat washers and lock washers. A torque of 150 ft-lbs was used for the 5/8" hardware. Unit maintained structural integrity and remained functional per manufacturer requirement after shake table test. Contents were included in testing per operating conditions.

UNIT UNDER TEST (UUT) SUMMARY SHEET

2000560-CR-001-R1



Manufacturer: Mitsubishi Electrical Power Products, Inc.	UUT 3
Model Line: 9900A UPS	
Model Number: M9900A-E-080-480-A02 Serial Number: 16-7M85520-04	

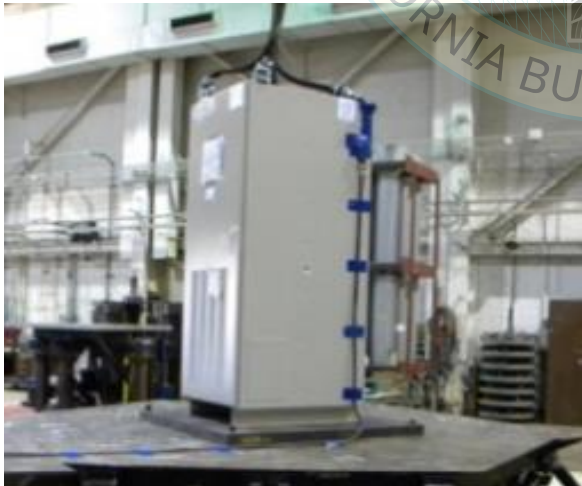
Product Construction Summary:
Painted carbon steel enclosure. Certified units must be constructed in compliance with construction standards and detailing at time of testing.

Options/Subcomponent Summary:
Internal components of certified units must be consistent with tested layout and selection.

<i>UUT Properties</i>						
Weight (lb)	Dimension (in)			Lowest Natural Frequency (Hz)		
	Depth	Width	Height	Front-Back	Side-Side	Vertical
798	33.0	27.0	78.5	6.4	5.3	31.3

<i>UUT Highest Passed Seismic Run Information</i>									
Building Code	Test Criteria	S _{DS} (g)	z/h	I _p	A _{FLX-H} (g)	A _{RIG-H} (g)	A _{FLX-V} (g)	A _{RIG-V} (g)	
CBC 2019	ICC-ES AC156	2.0	1.0	1.5	3.20	2.40	1.33	0.53	
		2.0	0.0						

Test Mounting Details:



Base mounted - rigid with four (4) 1/2" - 13 Grade 5 hex-head bolts, washers, and lock washers.
Unit maintained structural integrity and remained functional per manufacturer requirement after shake table test.
Contents were included in testing per operating conditions.

UNIT UNDER TEST (UUT) SUMMARY SHEET

2000560-CR-001-R1



Manufacturer: Mitsubishi Electrical Power Products, Inc.	UUT 4
Model Line: 9900A UPS	
Model Number: M9900A-E-225-480-A02 Serial Number: 15-7M85166-02	

Product Construction Summary:
Painted carbon steel enclosure. Certified units must be constructed in compliance with construction standards and detailing at time of testing.

Options/Subcomponent Summary:
Internal components of certified units must be consistent with tested layout and selection.

<i>UUT Properties</i>						
Weight (lb)	Dimension (in)			Lowest Natural Frequency (Hz)		
	Depth	Width	Height	Front-Back	Side-Side	Vertical
1,094	33.0	35.0	78.5	5.8	5.7	26.4

<i>UUT Highest Passed Seismic Run Information</i>									
Building Code	Test Criteria	S _{DS} (g)	z/h	I _p	A _{FLX-H} (g)	A _{RIG-H} (g)	A _{FLX-V} (g)	A _{RIG-V} (g)	
CBC 2019	ICC-ES AC156	2.0	1.0	1.5	3.20	2.40	1.33	0.53	
		2.0	0.0						

Test Mounting Details:



Base mounted - rigid with four (4) 1/2" - 13 Grade 5 hex-head bolts, washers, and lock washers.
Unit maintained structural integrity and remained functional per manufacturer requirement after shake table test.
Contents were included in testing per operating conditions.