



DEPARTMENT OF HEALTH CARE ACCESS AND INFORMATION
OFFICE OF STATEWIDE HOSPITAL PLANNING AND DEVELOPMENT

APPLICATION FOR HCAI SPECIAL SEISMIC
CERTIFICATION PREAPPROVAL (OSP)

OFFICE USE ONLY

APPLICATION #: OSP-0248

HCAI Special Seismic Certification Preapproval (OSP)

Type: New Renewal

Manufacturer Information

Manufacturer: Scott Springfield Mfg. Inc.

Manufacturer's Technical Representative: Rae-Ann McLeod

Mailing Address: 2234 Portland Street S.E., Calgary, AB T2G4M6

Telephone: (403) 770-4189

Email: RaeAnn.McLeod@modine.com

Product Information

Product Name: Various (see Attachment)

Product Model Number(s): Various (see Attachment)

Product Category: Air Conditioning Units

Product Sub-Category: Air Conditioning Units - Custom

General Description: Air conditioning unit cabinets with internal and external components as outlined in supporting documentation.

Mounting Description: Base Mounted Rigid

Tested Seismic Enhancements: Seismic enhancements made to the test units and/or modifications required to address anomalies during the tests shall be incorporated into the production units.

Applicant Information

Applicant Company Name: Simpson Gumpertz & Heger

Contact Person: Andrew Appelbaum

Mailing Address: 4695 MacArthur Ct Ste 500, Newport Beach, CA 92660

Telephone: (440) 804-4204

Email: acappelbaum@sgh.com

Title: Senior Consulting Engineer



**DEPARTMENT OF HEALTH CARE ACCESS AND INFORMATION
OFFICE OF STATEWIDE HOSPITAL PLANNING AND DEVELOPMENT**

California Licensed Structural Engineer Responsible for the Engineering and Test Report(s)

Company Name: Simpson Gumpertz & Heger
 Name: Derrick Watkins California License Number: S5257
 Mailing Address: 4695 MacArthur Court, Suite 500, Newport Beach, CA 92660
 Telephone: (858) 997-8985 Email: DAWatkins@sgh.com

Certification Method

GR-63-Core ICC-ES AC156 IEEE 344 IEEE 693 NEBS 3
 Other (Please Specify): _____

Testing Laboratory

Company Name: ENVIRONMENTAL TESTING LABORATORIES, INC. (ETL)
 Contact Person: Paul Little
 Mailing Address: 11034 Indian Trail, Dallas TX 75229-3513
 Telephone: (972) 247-9657 Email: paul@etldallas.com

Company Name: UNIVERSITY OF CALIFORNIA, BERKELEY (PEER)
 Contact Person: Amarnath Kasalanati
 Mailing Address: 325 Davis Hall, Berkeley CA 94720-1729
 Telephone: (510) 642-3437 Email: peer_center@berkeley.edu

Company Name: QUALTECH/CURTISS WRIGHT/TRENTEC
 Contact Person: Marie Nemier
 Mailing Address: 4600 East Tech Drive, Cincinnati OH 45245
 Telephone: (513) 528-7900 Email: mnemier@curtisswright.com





**DEPARTMENT OF HEALTH CARE ACCESS AND INFORMATION
OFFICE OF STATEWIDE HOSPITAL PLANNING AND DEVELOPMENT**

Seismic Parameters

Certified Response Spectral Acceleration Factors:(F_p/W_p)

Horizontal (A Flx-H), $g = \underline{3.09}$ (A Rig-H), $g = \underline{2.08}$
 Vertical (A Flx-V), $g = \underline{1.29}$ (A Rig-V), $g = \underline{0.51}$

SDS (Design spectral response acceleration at short period, g) = 1.93 @ $z/h=0$; 1.93 @ $z/h=1$

H_f (Force amplification height factor) = 1 @ $z/h=0$; 3.5 @ $z/h=1$

R_u (Structure ductility reduction factor) = 1 @ $z/h=0$; 1.3 @ $z/h=1$

I_p (Importance factor) = 1.5

z/h (Height ratio factor) = 0 and 1

HCAI Approval (For Office Use Only) - Approval Expires on 03/17/2032

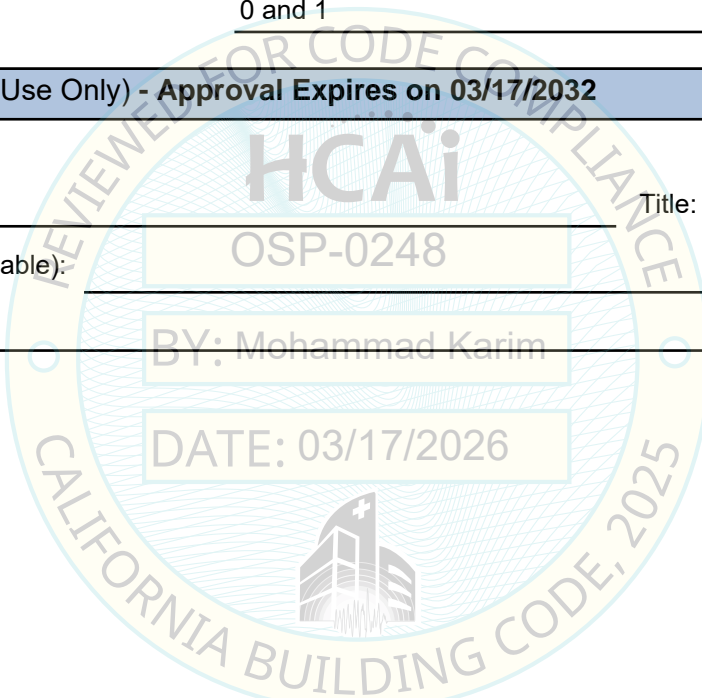
Date: 3/17/2026

Name: Mohammad Karim Title: Supervisor, Health Facilities

Condition of Approval (if applicable): OSP-0248

BY: Mohammad Karim

DATE: 03/17/2026



SPECIAL SEISMIC CERTIFICATION CERTIFIED COMPONENTS



SGH PROJECT NO. 248143.00-SCOT

Manufacture Info		Seismic Parameters						Building Codes	
Manufacturer:	Scott Springfield Mfg., Inc.	S_{ps}	z / h	H_f / R_y	A_{FLX-H}	A_{RIG-H}	A_{FLX-V}	A_{RIG-V}	CBC 2025
Product Type:	Custom Air Handling Units	1.93	1.0	2.69	3.09	2.08	1.29	0.52	ASCE 7-22
Model Line:	Scott Springfield Custom Air Handling Units	1.93	0.0	1.0					

TABLE 1 Enclosure Options

Construction Summary

Units shall be constructed in accordance with Scott Springfield Mfg. typical seismic details. Panel: 2"-4" wall panel thickness with 16ga-galvanized carbon steel walls and galvanized carbon steel liners (see Table 2).

Options Summary

Indoor or outdoor. Units within dimensions listed below certified for configurations shown in attached drawings. With or without splits. With or without corridor vestibule. Seismic bracing per the attached drawings.

Model Line	Model	Dimensions (in)			Weight (lb)	Notes	UUT
		Depth	Width	Height			
Custom Air Handling Units	Enclosures	42	36	30	-		Extrap.
			Extrap.
		98	98	98	4300	UUT: 64 psf	1
			Interp.
		144	144	144	12480	UUT: 87 psf	3
			Interp.
		96	144	144	11400	UUT: 119 psf	2
		Interp.	
	Enclosures - 2 walls (inlet & outlet walls removed)	42	36	30	-		Extrap.
			Extrap.
		144	240	144	15997	UUT: 67 psf 8b seismic braces: angle bracing and straight water coil at inlet; angle bracing at outlet	8b
		144	240	144	18176	UUT: 76 psf 9b seismic braces: EC fanwall at inlet; staggered water coil at outlet (no angle bracing)	9b
		144	240	144	19200	UUT: 80 psf 9a seismic braces: EC fanwall and angle bracing at inlet; staggered water coil and angle bracing at outlet	9a
		144	240	144	20883	UUT: 87 psf 8a seismic braces: angle bracing and straight water coil at inlet; damper wall at outlet	8a
...				

GALV. STEEL LINER;
 22 GA SOLID (S), 18 GA WALL ON RIB
 (WOR), 22 GA WASHDOWN (WD), AND
 22 GA PERFORATED (P) OPTIONS

16 GA GALV. STEEL
 EXTERIOR WALL
 AND ROOF PANELS

1/8" ALUM. CHECKER PLATE FLOOR

C4X5.4 ASTM A36 BASE CHANNEL
 C6X8.2 ASTM A36 BASE CHANNEL
 C8X11.5 ASTM A36 BASE CHANNEL

NOTES:
 1. WALL CASING INSULATION THICKNESS IS 4" MAX.
 2. UNIT BASE CHANNEL HEIGHT IS 8" MAX.
 3. APPROVED COMPONENTS LISTED ABOVE ARE SHOWN
 AS REFERENCE ONLY; THEY CAN BE RE-CONFIGURED
 AS REQUIRED.

4. REFER TO SHEET 7 FOR BRACING REQUIREMENTS

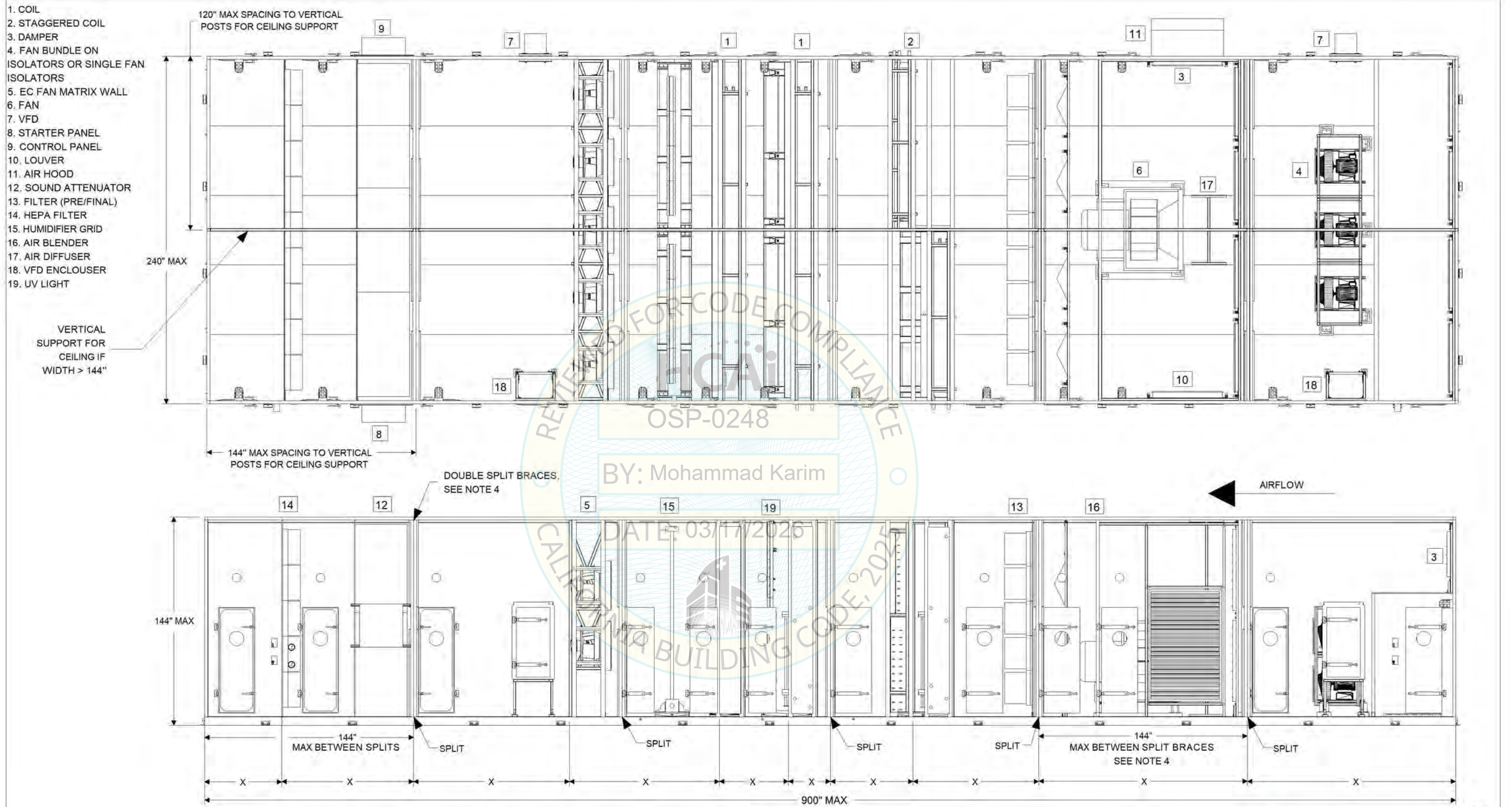
SHEET 1



PROJECT: OSP Seismic Certification

TAG: AHU-A

UNITS: Inches CO: 05252 DWG: M1



- 1. COIL
- 2. STAGGERED COIL
- 3. DAMPER
- 4. FAN BUNDLE ON ISOLATORS OR SINGLE FAN ISOLATORS
- 5. EC FAN MATRIX WALL
- 6. FAN
- 7. VFD
- 8. STARTER PANEL
- 9. CONTROL PANEL
- 10. LOUVER
- 11. AIR HOOD
- 12. SOUND ATTENUATOR
- 13. FILTER (PRE/FINAL)
- 14. HEPA FILTER
- 15. HUMIDIFIER GRID
- 16. AIR BLENDER
- 17. AIR DIFFUSER
- 18. VFD ENCLOUSER
- 19. UV LIGHT

VERTICAL SUPPORT FOR CEILING IF WIDTH > 144"

240" MAX

120" MAX SPACING TO VERTICAL POSTS FOR CEILING SUPPORT

144" MAX SPACING TO VERTICAL POSTS FOR CEILING SUPPORT

DOUBLE SPLIT BRACES. SEE NOTE 4

AIRFLOW

144" MAX

144" MAX BETWEEN SPLITS

SPLIT

SPLIT

SPLIT

SPLIT

144" MAX BETWEEN SPLIT BRACES SEE NOTE 4

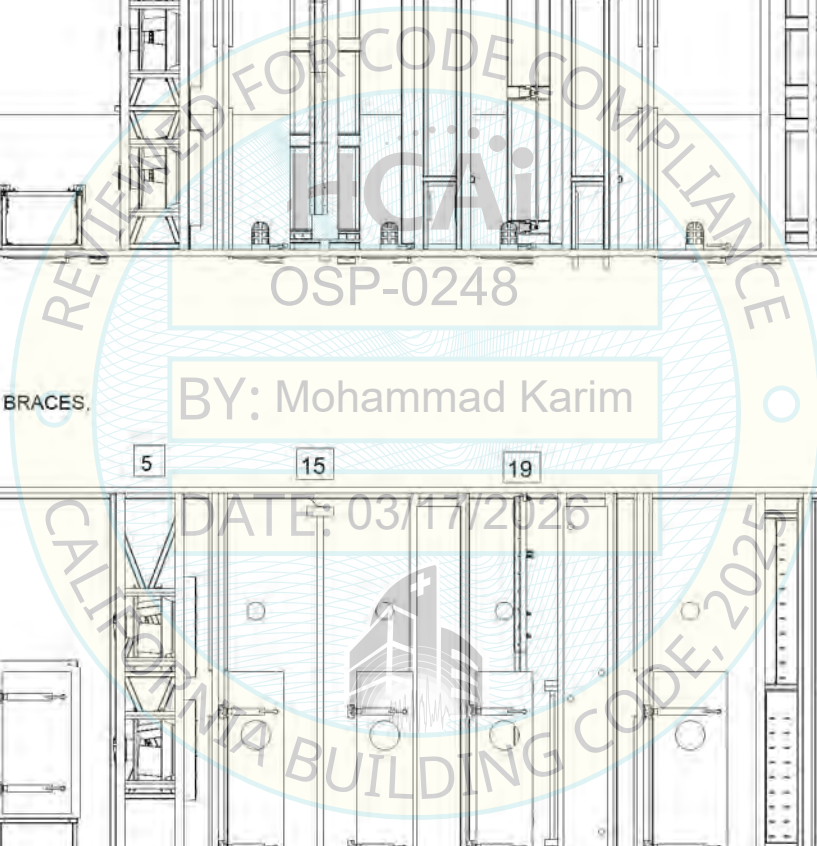
SPLIT

900" MAX

MAX SPACING "X" BETWEEN TRANSVERSE ELEMENTS FASTENED TO FOUR SIDES OF ENCLOSURE (FLOOR, ROOF, AND BOTH SIDEWALLS). REFER TO SHEET 7 FOR LIST OF TRANSVERSE ELEMENTS AND MAX SPACINGS.

- NOTES:
- 1. WALL CASING INSULATION THICKNESS IS 4" MAX.
 - 2. UNIT BASE CHANNEL HEIGHT IS 8" MAX.
 - 3. APPROVED COMPONENTS LISTED ABOVE ARE SHOWN AS REFERENCE ONLY; THEY CAN BE RE-CONFIGURED AS REQUIRED.

4. REFER TO SHEET 7 FOR BRACING REQUIREMENTS



SHEET 2

Scott Springfield
by MODINE

PROJECT: OSP Seismic Certification

TAG: AHU-A

UNITS: Inches CO: 05252 DWG: M1

GALV. STEEL LINER;
22 GA SOLID (S), 18 GA WALL ON RIB
(WOR), 22 GA WASHDOWN (WD), AND
22 GA PERFORATED (P) OPTIONS

16 GA GALV. STEEL
EXTERIOR WALL AND
ROOF PANELS

1/8" ALUM. CHECKER
PLATE FLOOR

C4X5.4 ASTM A36 BASE CHANNEL
C6X8.2 ASTM A36 BASE CHANNEL
C8X11.5 ASTM A36 BASE CHANNEL

NOTES:

- 1. WALL CASING INSULATION THICKNESS IS 4" MAX.
- 2. UNIT BASE CHANNEL HEIGHT IS 8" MAX.
- 3. APPROVED COMPONENTS LISTED ABOVE ARE SHOWN AS REFERENCE ONLY; THEY CAN BE RE-CONFIGURED AS REQUIRED.
- 4. REFER TO SHEET 7 FOR BRACING REQUIREMENTS

03/17/2026

OSP-0248

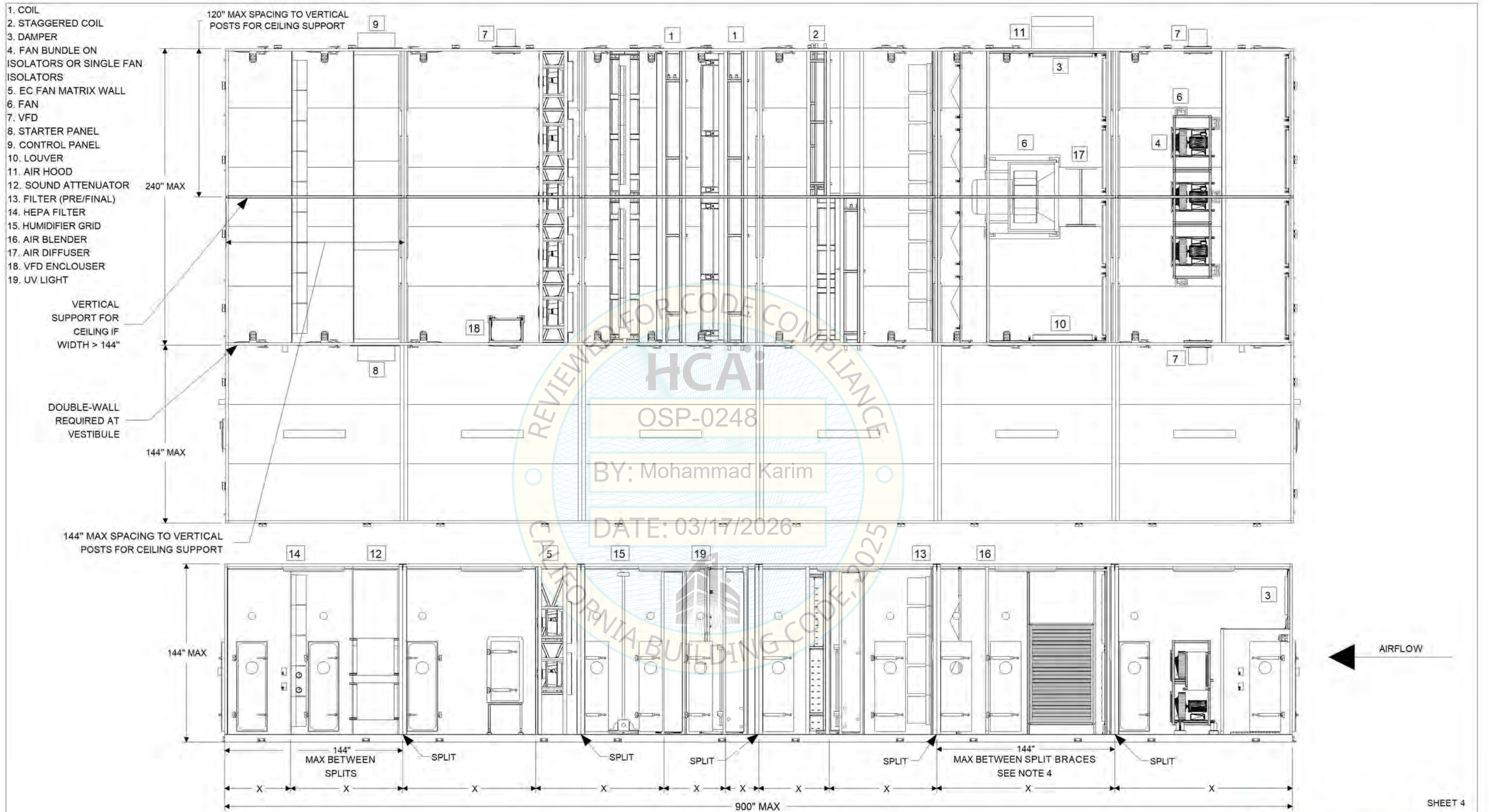
SHEET 3



PROJECT: OSP Seismic Certification

TAG: AHU-B

UNITS: Inches CO: 05252 DWG: M1



- 1. COIL
- 2. STAGGERED COIL
- 3. DAMPER
- 4. FAN BUNDLE ON ISOLATORS OR SINGLE FAN ISOLATORS
- 5. EC FAN MATRIX WALL
- 6. FAN
- 7. VFD
- 8. STARTER PANEL
- 9. CONTROL PANEL
- 10. LOUVER
- 11. AIR HOOD
- 12. SOUND ATTENUATOR
- 13. FILTER (PRE/FINAL)
- 14. HEPA FILTER
- 15. HUMIDIFIER GRID
- 16. AIR BLENDER
- 17. AIR DIFFUSER
- 18. VFD ENCLOUSER
- 19. UV LIGHT

120" MAX SPACING TO VERTICAL POSTS FOR CEILING SUPPORT

240" MAX

VERTICAL SUPPORT FOR CEILING IF WIDTH > 144"

DOUBLE-WALL REQUIRED AT VESTIBULE

144" MAX

144" MAX SPACING TO VERTICAL POSTS FOR CEILING SUPPORT

MAX SPACING "X" BETWEEN TRANSVERSE ELEMENTS FASTENED TO FOUR SIDES OF ENCLOSURE (FLOOR, ROOF, AND BOTH SIDEWALLS). REFER TO SHEET 7 FOR LIST OF TRANSVERSE ELEMENTS AND MAX SPACINGS.

- NOTES:
- 1. WALL CASING INSULATION THICKNESS IS 4" MAX.
 - 2. UNIT BASE CHANNEL HEIGHT IS 8" MAX.
 - 3. APPROVED COMPONENTS LISTED ABOVE ARE SHOWN AS REFERENCE ONLY; THEY CAN BE RE-CONFIGURED AS REQUIRED.
 - 4. REFER TO SHEET 7 FOR BRACING REQUIREMENTS

SHEET 4

Scott Springfield
by MODINE

PROJECT: OSP Seismic Certification

TAG: AHU-B

UNITS: Inches CO: 05252 DWG: M1

GALV. STEEL LINER;
22 GA SOLID (S), 18 GA WALL ON RIB
(WOR), 22 GA WASHDOWN (WD), AND
22 GA PERFORATED (P) OPTIONS

16 GA GALV. STEEL
EXTERIOR WALL
AND ROOF PANELS

1/8" ALUM. CHECKER
PLATE FLOOR

C4X5.4 ASTM A36 BASE CHANNEL
C6X8.2 ASTM A36 BASE CHANNEL
C8X11.5 ASTM A36 BASE CHANNEL

NOTES:

1. WALL CASING INSULATION THICKNESS IS 4" MAX.
2. UNIT BASE CHANNEL HEIGHT IS 8" MAX.
3. APPROVED COMPONENTS LISTED ABOVE ARE SHOWN AS REFERENCE ONLY; THEY CAN BE RE-CONFIGURED AS REQUIRED.
4. REFER TO SHEET 7 FOR BRACING REQUIREMENTS

03/17/2026

OSP-0248

SHEET 5



PROJECT: OSP Seismic Certification

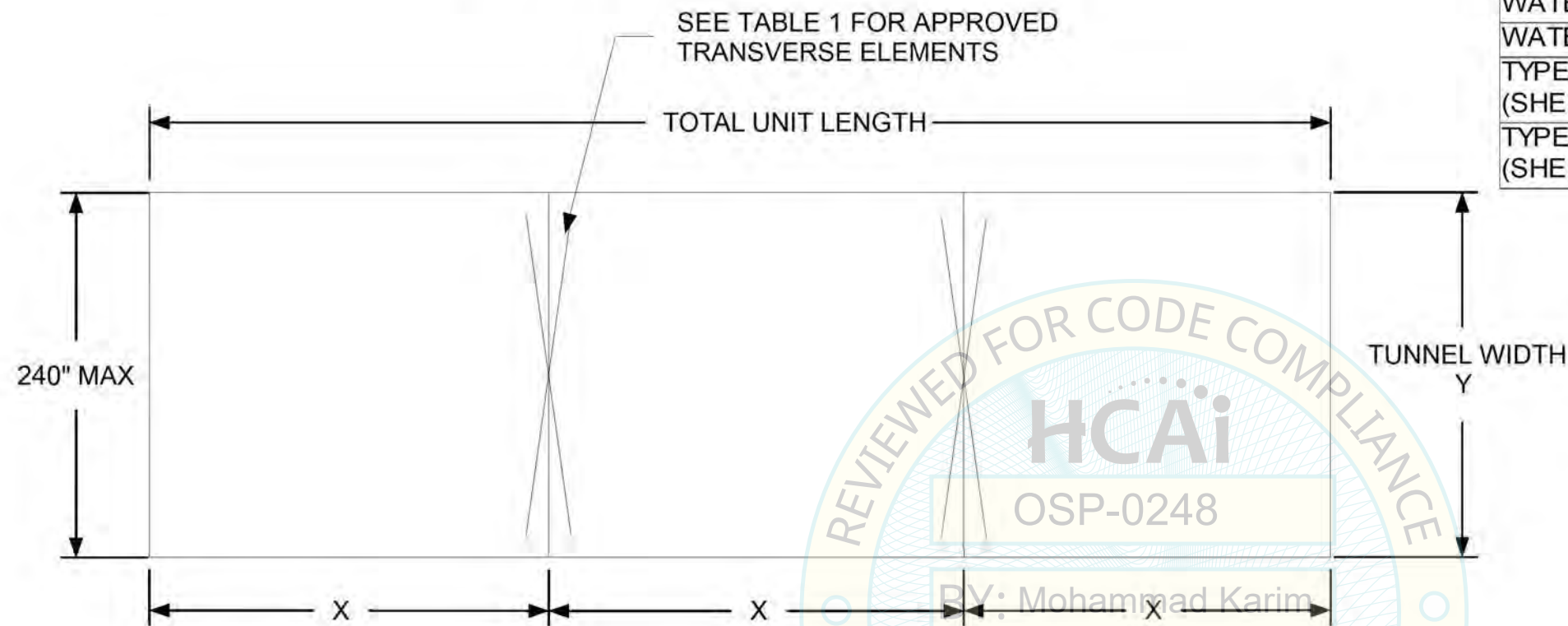
TAG: AHU-C

UNITS: Inches CO: 05252 DWG: M1

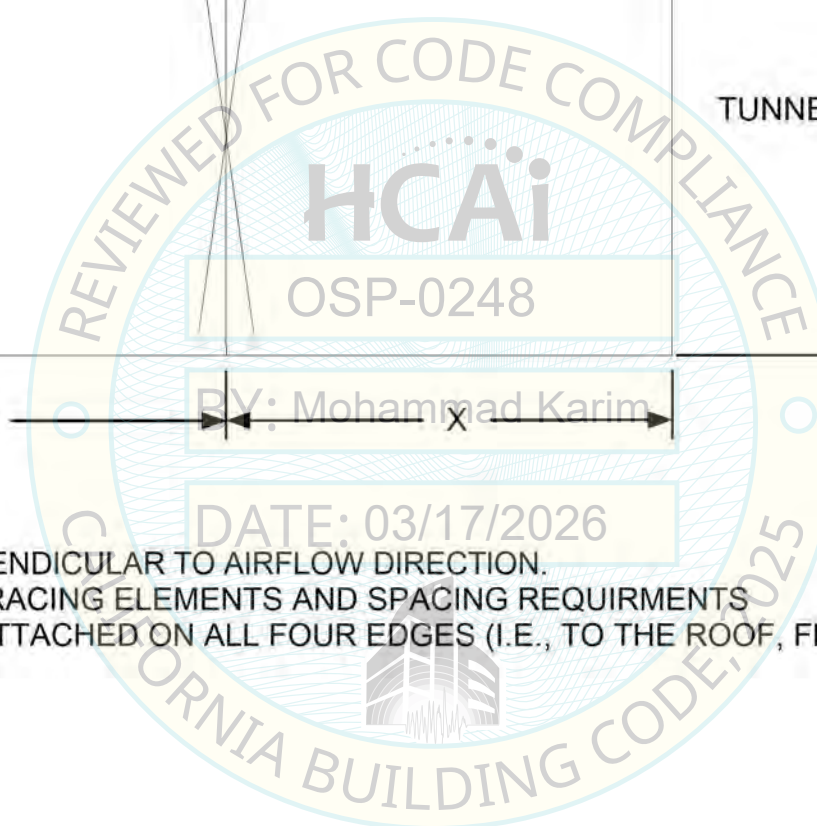
TABLE 1 - APPROVED TRANSVERSE BRACING ELEMENTS

TRANSVERSE ELEMENT TYPE	"X" MAX (IN)	"Y" MAX (IN)
EC FAN MATRIX WALL	72	240
DAMPER / BLENDER WALL	72	240
WATER COIL - STANDARD RACK	72	144
WATER COIL - HEAVY RACK	72	240
TYPE 1 TRANSVERSE BRACING (SHEET 8)	72	144
TYPE 2 TRANSVERSE BRACING (SHEETS 9 THROUGH 11)	72	240

SEISMIC BRACING REQUIREMENTS

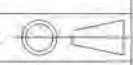


1. TRANSVERSE BRACING IS THE BRACING PERPENDICULAR TO AIRFLOW DIRECTION.
2. SEE TABLE 1 FOR APPROVED TRANSVERSE BRACING ELEMENTS AND SPACING REQUIREMENTS
3. TRANSVERSE BRACING ELEMENTS MUST BE ATTACHED ON ALL FOUR EDGES (I.E., TO THE ROOF, FLOOR, AND TWO SIDEWALLS OF THE ENCLOSURE).



SHEET 7

IF IN DOUBT, ASK

DRAWING STANDARDS ANSI Y14.5M-1982
 THIRD ANGLE 
 DO NOT SCALE


THIS DOCUMENT CONTAINS PROPRIETARY INFORMATION AND MAY NOT BE REPRODUCED OR COPIED WITHOUT THE EXPRESS WRITTEN PERMISSION OF A DULY AUTHORIZED REPRESENTATIVE OF SCOTT SPRINGFIELD MFG. INC. COPYRIGHT 2002 SCOTT SPRINGFIELD MFG. INC. ALL RIGHTS RESERVED

DIMENSIONS ARE IN INCHES

GENERAL TOLERANCES:

DIMENSIONS: +/- 1/32 (0.031) IN
 ANGLES: +/- 1 DEGREE
 BEND RADII: 1/32 (0.031) IN
 ALL DIMENSIONS: O.D.

UNLESS OTHERWISE SPECIFIED

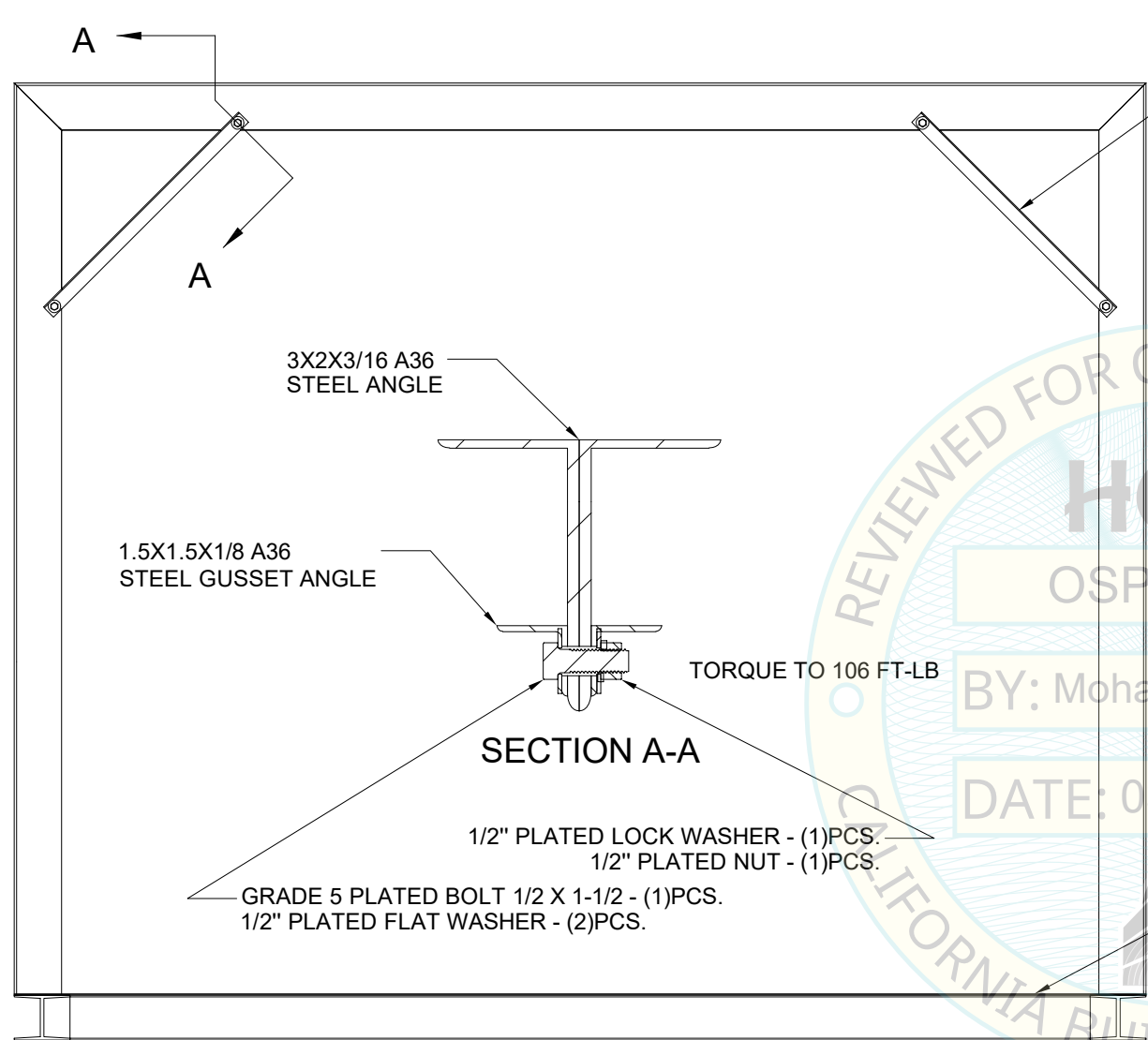


DOCUMENT NAME

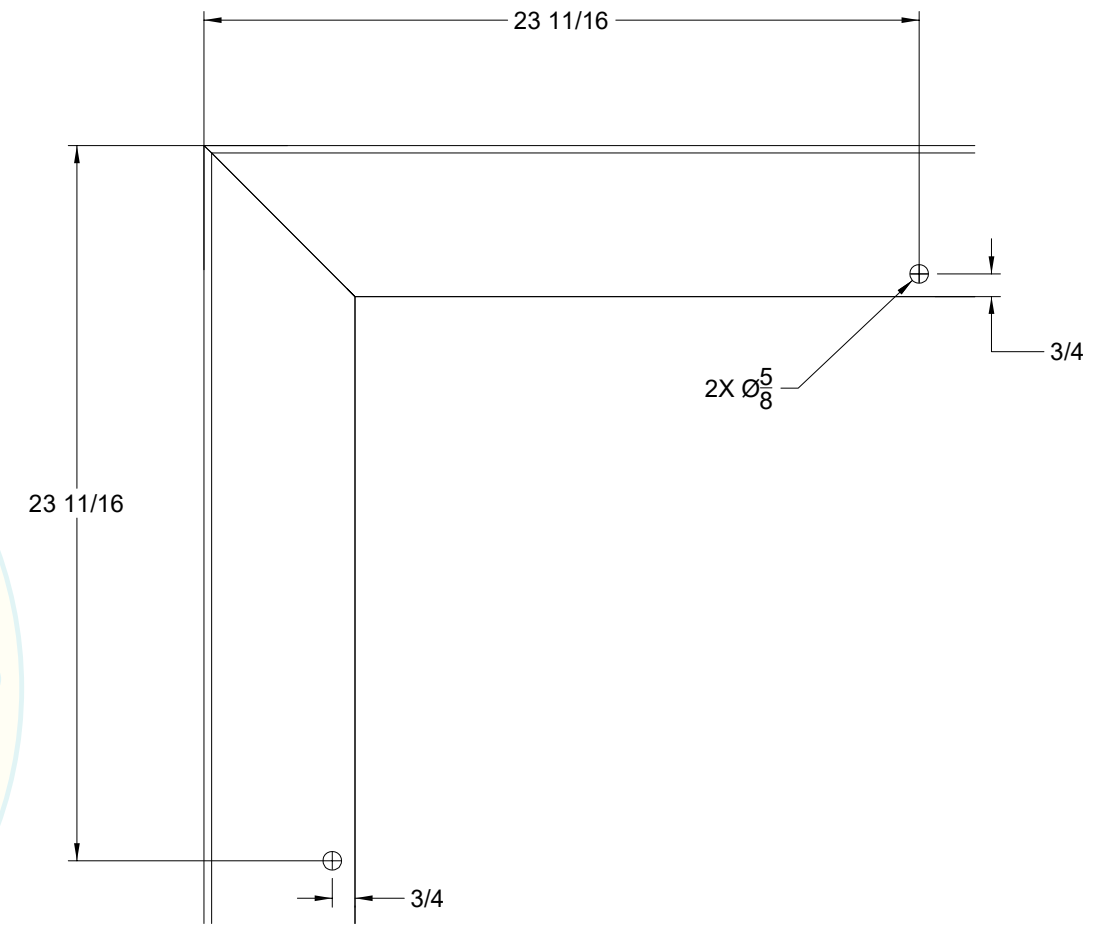
Seismic Brace Requirement

NOTES:

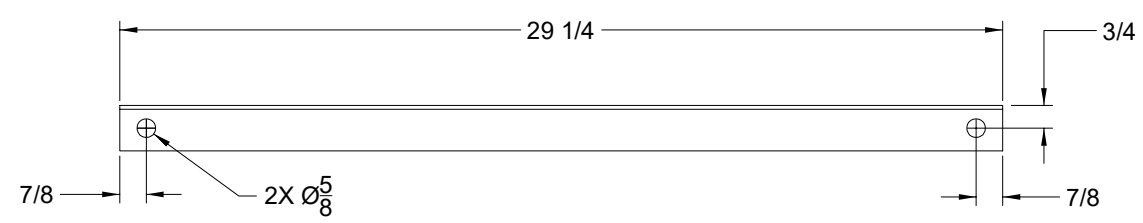
1. REMOVE ALL BURRS AND SHARP EDGES



SEE DRILLING & ANGLE DETAIL

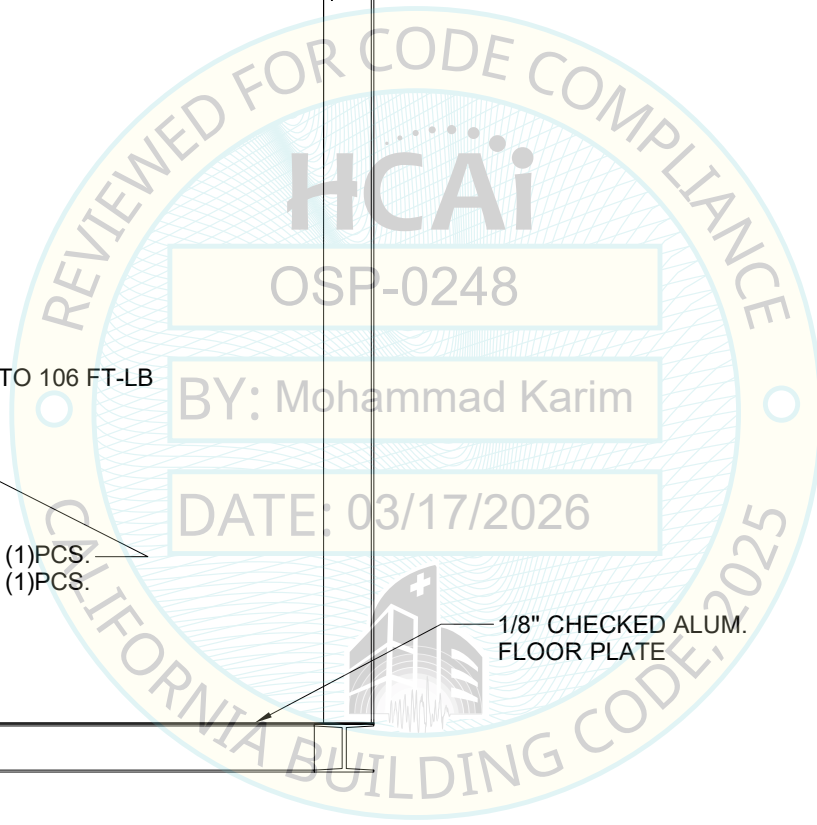


SPLIT ANGLE DRILL POSITION



SPLIT GUSSET ANGLE DETAIL

IF IN DOUBT, ASK



MANUFACTURER ---		DIMENSIONS ARE IN INCHES (UNLESS OTHERWISE SPECIFIED)
MANUFACTURER'S PART NUMBER ---		
CONTROL DOCUMENT ST-08004		GENERAL TOLERANCES:
MATERIAL SPEC. SEE NOTE 2	MATERIAL CODE ---	DIMENSIONS: +/- .XX ± 0.02 IN .XXX ± 0.005 IN
DRAWING STANDARDS ANSI Y14.100-2000		ANGLES: +/- 0.5°
THIRD ANGLE		BEND RADII: 0.031 IN
DO NOT SCALE		ALL DIMENSIONS: O.D. UNLESS OTHERWISE SPECIFIED
THIS DOCUMENT CONTAINS PROPRIETARY INFORMATION AND MAY NOT BE REPRODUCED OR COPIED WITHOUT THE EXPRESS WRITTEN PERMISSION OF A DULY AUTHORIZED REPRESENTATIVE OF SCOTT SPRINGFIELD MFG. INC. COPYRIGHT © 2002 SCOTT SPRINGFIELD MFG INC. ALL RIGHTS RESERVED		FILENAME ---

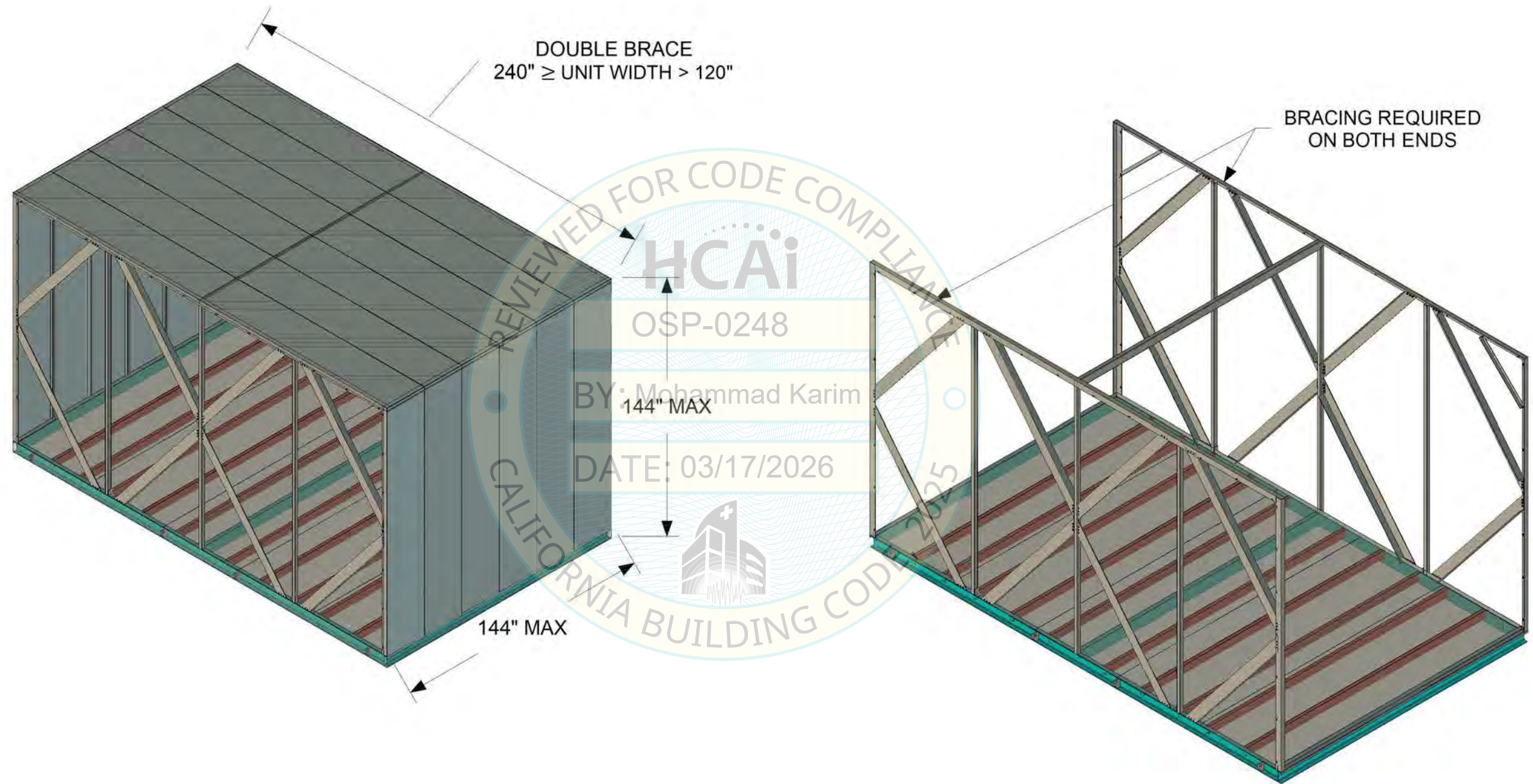
SHEET 8

Scott Springfield Mfg. Inc.

SSM PART NUMBER
--

SSM PART DESCRIPTION
TYPE 1 TRANSVERSE BRACING

SPLIT CROSS BRACING STANDARD



REVIEWED FOR CODE COMPLIANCE
 HCAi
 OSP-0248
 BY: Mohammad Karim
 DATE: 03/17/2026
 CALIFORNIA BUILDING CODE 2025

SHEET 9



DOCUMENT NAME

TYPE 2 TRANSVERSE BRACING

IF IN DOUBT, ASK

DRAWING STANDARDS ANSI
 Y14.5M-1982

THIRD ANGLE

DO NOT SCALE

THIS DOCUMENT CONTAINS PROPRIETARY INFORMATION AND MAY NOT BE REPRODUCED OR COPIED WITHOUT THE EXPRESS WRITTEN PERMISSION OF A DULY AUTHORIZED REPRESENTATIVE OF SCOTT SPRINGFIELD MFG. INC. COPYRIGHT 2002 SCOTT SPRINGFIELD MFG. INC. ALL RIGHTS RESERVED

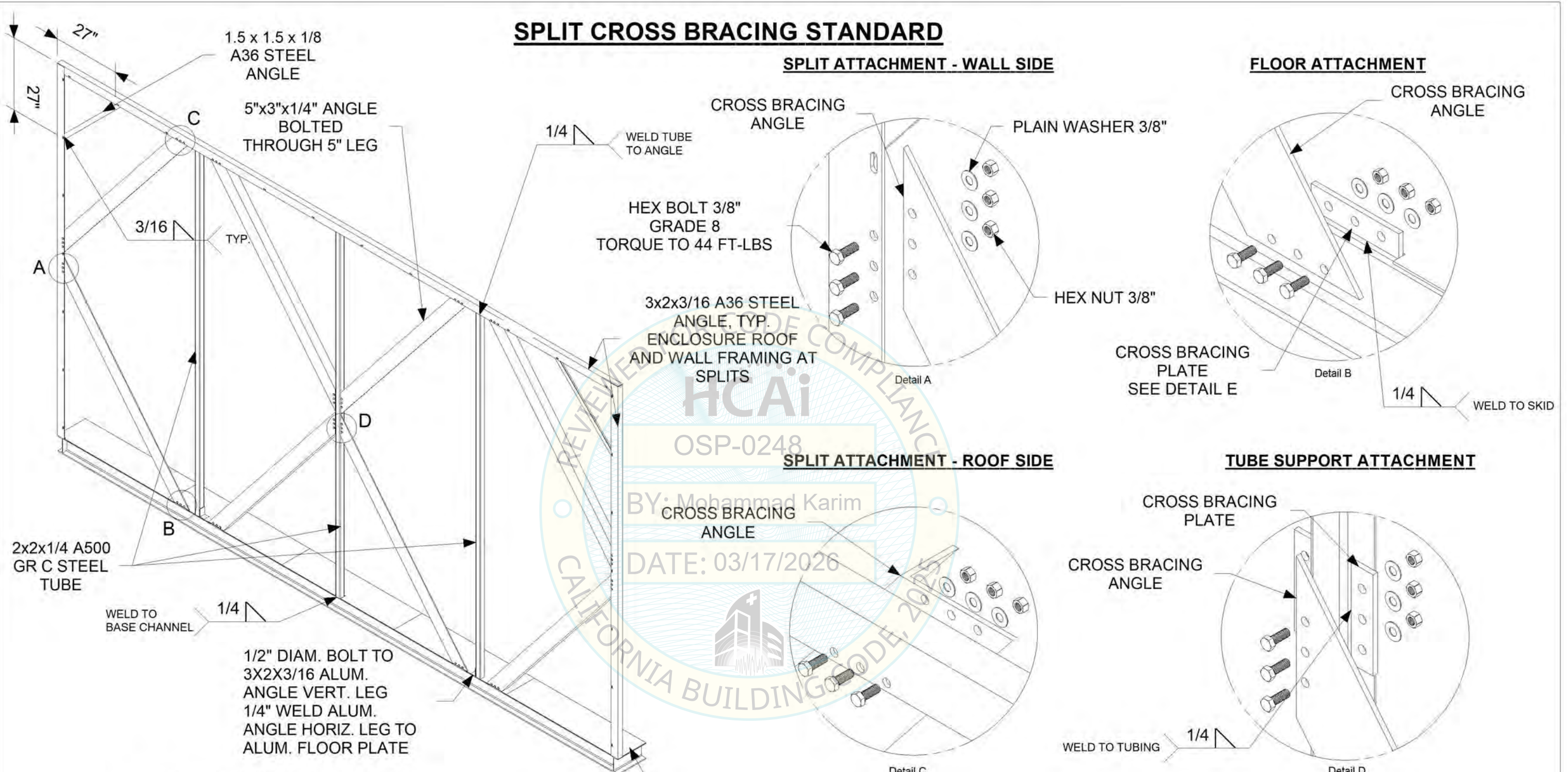
DIMENSIONS ARE IN INCHES

GENERAL TOLERANCES:

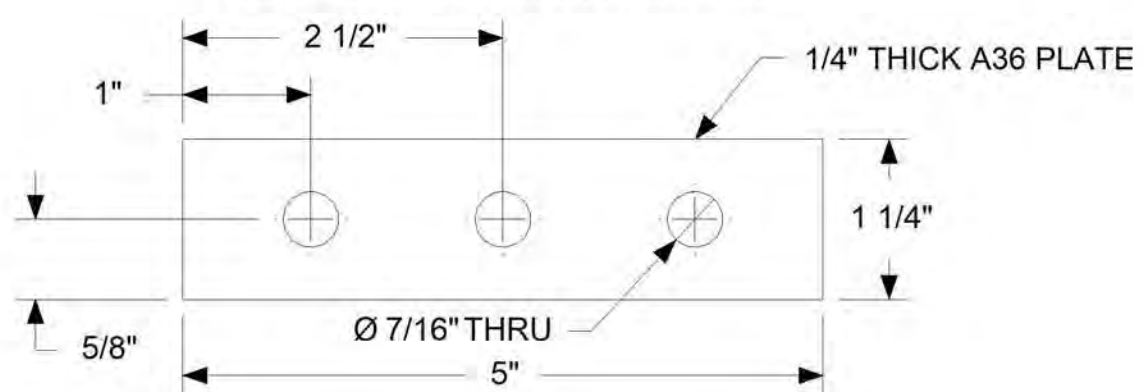
DIMENSIONS: +/- 1/32 (0.031) IN
 ANGLES: +/- 1 DEGREE
 BEND RADII: 1/32 (0.031) IN
 ALL DIMENSIONS: O.D.

UNLESS OTHERWISE SPECIFIED

SPLIT CROSS BRACING STANDARD



DETAIL E - CROSS BRACING PLATE



IF IN DOUBT, ASK

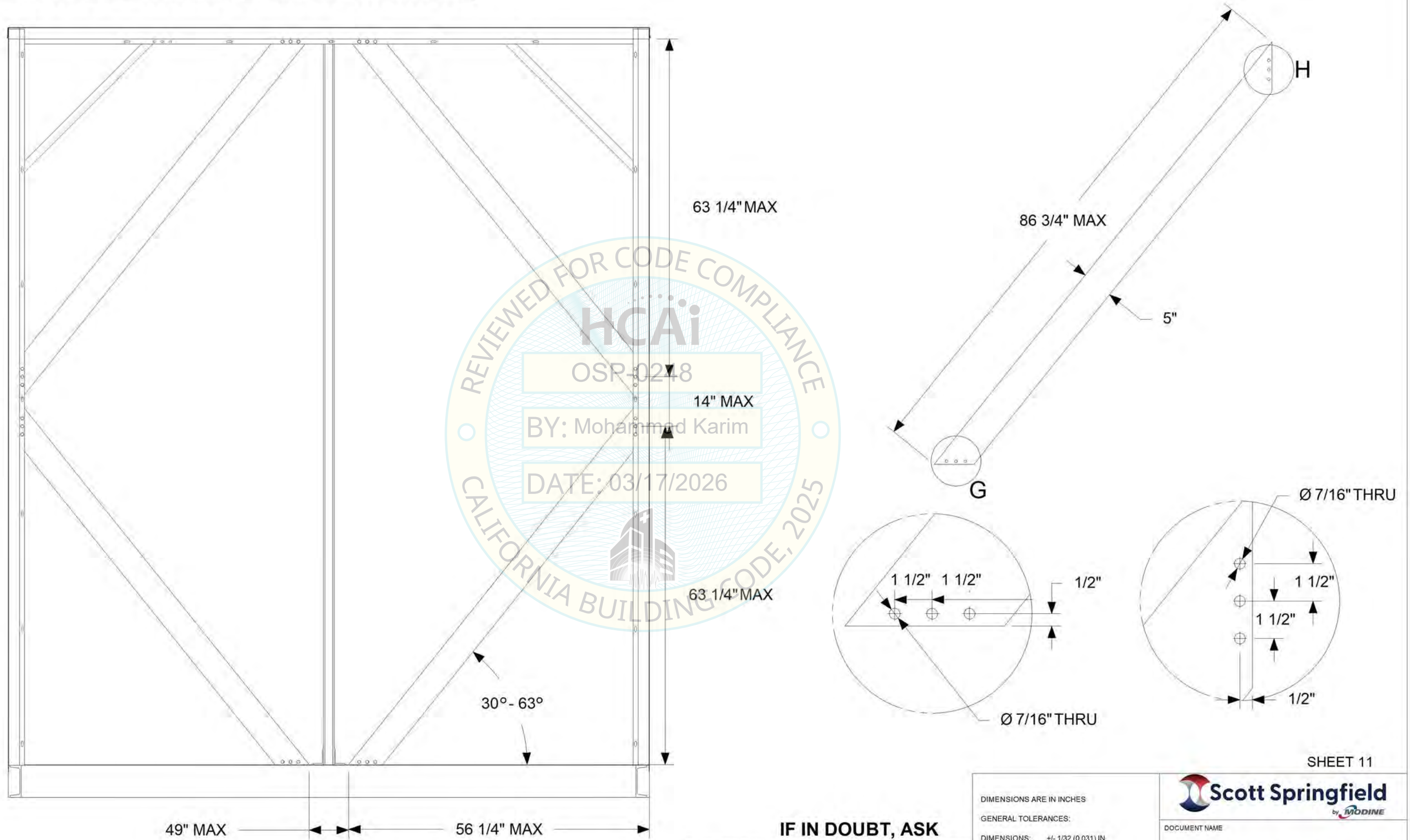
DRAWING STANDARDS ANSI Y14.5M-1982	THIS DOCUMENT CONTAINS PROPRIETARY INFORMATION AND MAY NOT BE REPRODUCED OR COPIED WITHOUT THE EXPRESS WRITTEN PERMISSION OF A DULY AUTHORIZED REPRESENTATIVE OF SCOTT SPRINGFIELD MFG. INC. COPYRIGHT 2002 SCOTT SPRINGFIELD MFG. INC. ALL RIGHTS RESERVED
THIRD ANGLE	
DO NOT SCALE	

DIMENSIONS ARE IN INCHES	
GENERAL TOLERANCES:	
DIMENSIONS:	+/- 1/32 (0.031) IN
ANGLES:	+/- 1 DEGREE
BEND RADII:	1/32 (0.031) IN
ALL DIMENSIONS: O.D.	
UNLESS OTHERWISE SPECIFIED	

SHEET 10

DOCUMENT NAME
TYPE 2 TRANSVERSE BRACING

SPLIT CROSS BRACING SIZING CONDITIONS



REVIEWED FOR CODE COMPLIANCE
HCAi
 OSP-0248
 BY: Mohammed Karim
 DATE: 03/17/2026
 CALIFORNIA BUILDING CODE, 2025

IF IN DOUBT, ASK

DRAWING STANDARDS ANSI Y14.5M-1982
 THIRD ANGLE
 DO NOT SCALE

THIS DOCUMENT CONTAINS PROPRIETARY INFORMATION AND MAY NOT BE REPRODUCED OR COPIED WITHOUT THE EXPRESS WRITTEN PERMISSION OF A DULY AUTHORIZED REPRESENTATIVE OF SCOTT SPRINGFIELD MFG. INC. COPYRIGHT 2002 SCOTT SPRINGFIELD MFG. INC. ALL RIGHTS RESERVED

DIMENSIONS ARE IN INCHES
 GENERAL TOLERANCES:
 DIMENSIONS: +/- 1/32 (0.031) IN
 ANGLES: +/- 1 DEGREE
 BEND RADII: 1/32 (0.031) IN
 ALL DIMENSIONS: O.D.
 UNLESS OTHERWISE SPECIFIED

SHEET 11

DOCUMENT NAME
TYPE 2 TRANSVERSE BRACING

SPECIAL SEISMIC CERTIFICATION CERTIFIED SUBCOMPONENTS

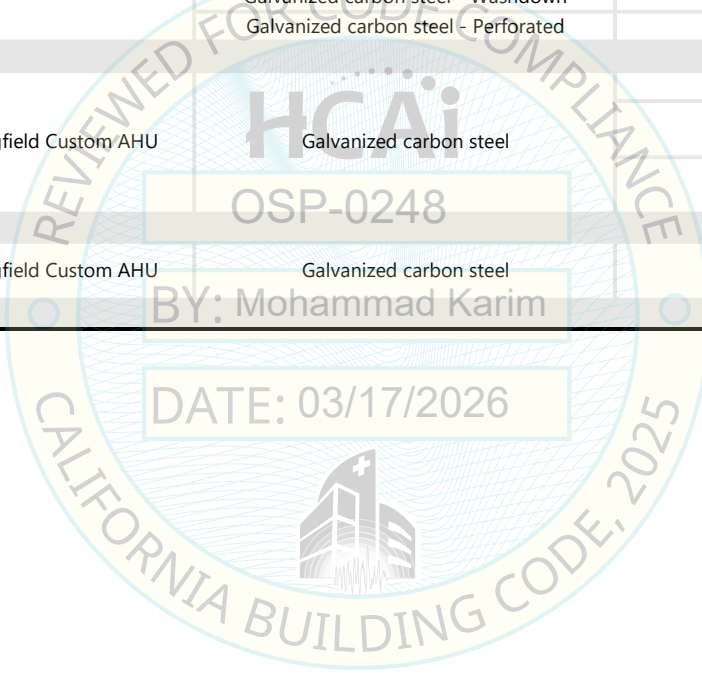


SGH PROJECT NO. 248143.00-SCOT

Manufacture Info		Seismic Parameters						Building Codes	
Manufacturer:	Scott Springfield Mfg., Inc.	S_{DS}	z / h	H_f / R_μ	A_{FLX-H}	A_{RIG-H}	A_{FLX-V}	A_{RIG-V}	CBC 2025
Product Type:	Custom Air Handling Units	1.93	1.0	2.69	3.09	2.08	1.29	0.52	ASCE 7-22
Model Line:	Scott Springfield Custom Air Handling Units	1.93	0.0	1.0					

TABLE 2 Enclosure Options

Component Type	Model	Material	Thickness	UUT
Panel	Scott Springfield Custom AHU	Galvanized carbon steel	2 in.	1, 8, 9
			4 in.	2, 3
Liner	Scott Springfield Custom AHU	Galvanized carbon steel - Solid	22 ga.	2, 3, 9
		Galvanized carbon steel - Wall on rib	18 ga.	2
		Galvanized carbon steel - Washdown	22 ga.	1, 2
		Galvanized carbon steel - Perforated	22 ga.	8
Base Floor	Scott Springfield Custom AHU	Galvanized carbon steel	4 in.	Extrap.
			6 in.	1, 2, 8, 9
			8 in.	3
Walls	Scott Springfield Custom AHU	Galvanized carbon steel	16 ga.	1, 2, 8, 9



SPECIAL SEISMIC CERTIFICATION CERTIFIED SUBCOMPONENTS

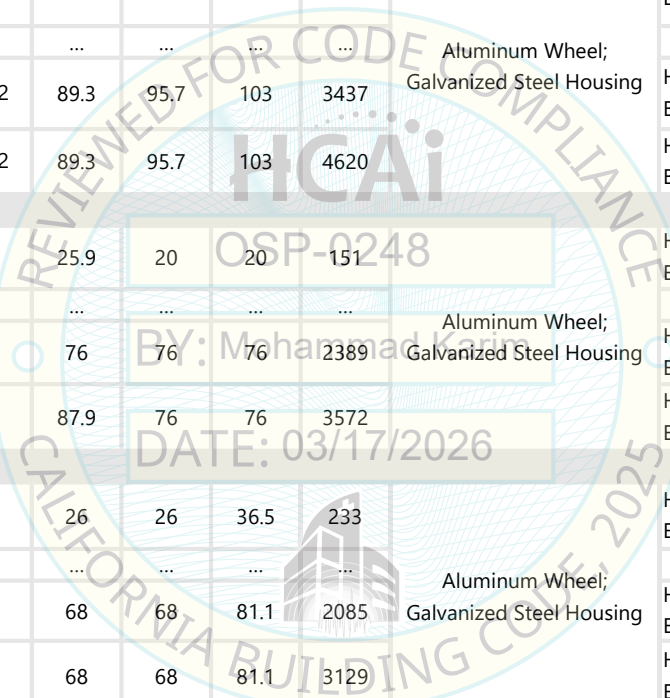


SGH PROJECT NO. 248143.00-SCOT

Manufacture Info		Seismic Parameters						Building Codes	
Manufacturer:	Scott Springfield Mfg., Inc.	S_{DS}	z / h	H_f / R_h	A_{FLX-H}	A_{RIG-H}	A_{FLX-V}	A_{RIG-V}	CBC 2025
Product Type:	Custom Air Handling Units	1.93	1.0	2.69	3.09	2.08	1.29	0.52	ASCE 7-22
Model Line:	Scott Springfield Custom Air Handling Units	1.93	0.0	1.0					

TABLE 3 Fans

Model Line (Manufacturer)	Model	Dimension (in)			Weight (lb)	Description	Notes	UUT
		Depth	Width	Height				
DWDI-AF, Arr. 3, Horizontal Shaft, Belt Drive (Twin City Fans)	BAE-DWDI122	19.8	28.6	23.2	181		HP: 1; BAE-DWDI122 3F THD C1	1
	Aluminum Wheel; Galvanized Steel Housing		Interp.
	BAE-DWDI542	89.3	95.7	103	3437		HP: 20; BAE-DWDI542 3F THD C1	5
	BAE-DWDI542	89.3	95.7	103	4620		HP: 125; BAE-DWDI542 3F THD C1	6
EPQN, Arr. 4, Horizontal Shaft, Direct Drive (Twin City Fans)	EPQN122	25.9	20	20	151		HP: 3; EPQN122 4H C1	1
	Aluminum Wheel; Galvanized Steel Housing		Interp.
	EPQN542	76	76	76	2389		HP: 20; EPQN542 4H C3	4
	EPQN542	87.9	76	76	3572		HP: 125; EPQN542 4H C3	7
EPQN, Arr. 4, Vertical Shaft, Direct Drive (Twin City Fans)	EPQN182	26	26	36.5	233		HP: 5; EPQN182 4V C1	1
	Aluminum Wheel; Galvanized Steel Housing		Interp.
	EPQN490	68	68	81.1	2085		HP: 25; EPQN490 4V C3	3
	EPQN490	68	68	81.1	3129		HP: 100; EPQN490 4V C3	7



SPECIAL SEISMIC CERTIFICATION CERTIFIED SUBCOMPONENTS

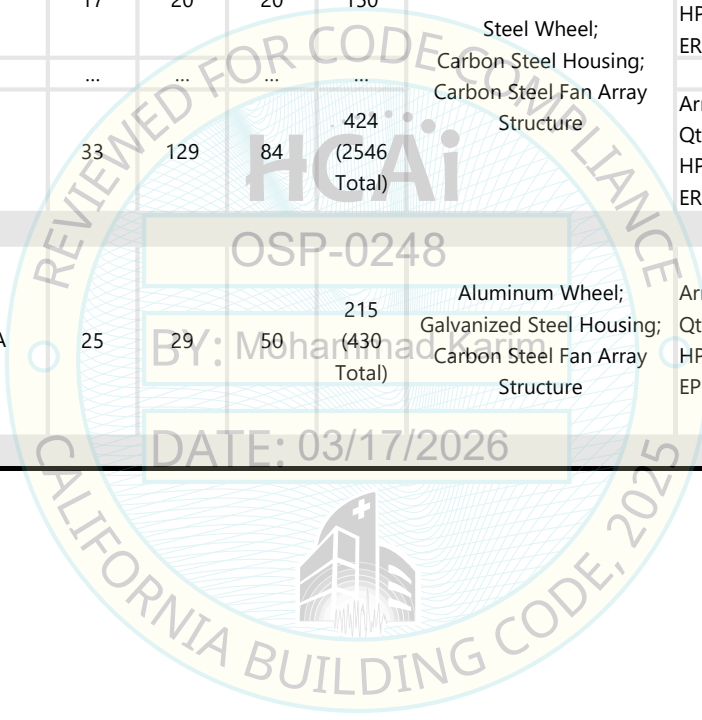


SGH PROJECT NO. 248143.00-SCOT

Manufacture Info		Seismic Parameters						Building Codes	
Manufacturer:	Scott Springfield Mfg., Inc.	S_{DS}	z / h	H_f / R_u	A_{FLX-H}	A_{RIG-H}	A_{FLX-V}	A_{RIG-V}	CBC 2025
Product Type:	Custom Air Handling Units	1.93	1.0	2.69	3.09	2.08	1.29	0.52	ASCE 7-22
Model Line:	Scott Springfield Custom Air Handling Units	1.93	0.0	1.0					

TABLE 4 Fan Walls

Model Line (Manufacturer)	Model	Dimension (in)			Weight (lb)	Material	Notes	UUT
		Depth	Width	Height				
ER##C, Arr. 4, Horizontal Shaft, Direct Drive, Fan Bundle (Ziehl-Abegg)	ER22C	17	20	20	150	Steel Wheel; Carbon Steel Housing; Carbon Steel Fan Array Structure	Arrangement: 1Hx1W; Qty.: 1; HP: 0.5; ER22C-4DM.C7.1R_155394/AS03	1
			Interp.
	ER50C	33	129	84	424 (2546 Total)		Arrangement: 2Hx3W; Qty.: 6; HP: 15; ER50C-4DM.I7.1R_112826/AS03	2
EPFN, Arr. 4, Horizontal Shaft, Direct Drive, Stacked (Twin City Fans)	EPFN122A	25	29	50	215 (430 Total)	Aluminum Wheel; Galvanized Steel Housing; Carbon Steel Fan Array Structure	Arrangement: 2Hx1W; Qty.: 2; HP: 1; EPFN122A 4H C1	8a, 8b



SPECIAL SEISMIC CERTIFICATION CERTIFIED SUBCOMPONENTS

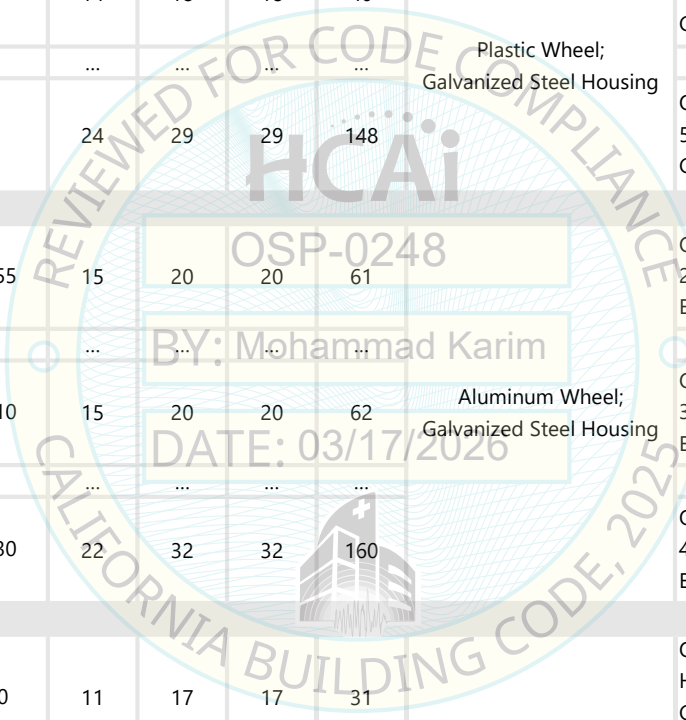


SGH PROJECT NO. 248143.00-SCOT

Manufacture Info		Seismic Parameters						Building Codes	
Manufacturer:	Scott Springfield Mfg., Inc.	S_{DS}	z / h	H_f / R_h	A_{FLX-H}	A_{RIG-H}	A_{FLX-V}	A_{RIG-V}	CBC 2025
Product Type:	Custom Air Handling Units	1.93	1.0	2.69	3.09	2.08	1.29	0.52	ASCE 7-22
Model Line:	Scott Springfield Custom Air Handling Units	1.93	0.0	1.0					

TABLE 5 EC Fan Matrix Walls

Model Line (Manufacturer)	Model	Dimension (in)			Weight (lb)	Material	Notes	UUT
		Depth	Width	Height				
GR##I, EC, Direct Drive, Wall (Ziehl-Abegg)	GR31	14	18	18	40	Plastic Wheel; Galvanized Steel Housing	Qty.: 1; 2.4 kW; GR31IZID.DC.CR_116889/A01	9a, 9b
		Interp.	
	GR56	24	29	29	148		Qty.: 1; 5.2 kW; GR56IZID.GQ.CR_116909/A01	9a, 9b
EG1R, EC, Direct Drive, Wall (ebm-papst)	EG1R240355	15	20	20	61	Aluminum Wheel; Galvanized Steel Housing	Qty.: 1; 2.9 kW; EG1R240355A26_M3G112-GA	9a, 9b
		Interp.	
	EG1R575310	15	20	20	62		Qty.: 1; 3.6 kW; EG1R575310A26_M3G112-GA	
		Interp.	
	EG1R480630	22	32	32	160		Qty.: 1; 4.4 kW; EG1R480630A26_M3G150-NA	9a, 9b
GKHM, EC, Direct Drive, Wall (Rosenberg)	GKHM 280	11	17	17	31	Aluminum Wheel; Galvanized Steel Housing	Qty.: 1; HP: 0.9 kW; GKHM 280-CIB.090.4FF IE MX_N88-28340	9a, 9b
		Interp.	
	GKHM 630	24	32	32	161 (1449 Total)		Qty.: 9; 4.4 kW; GKHM 630-CII.200.6NA IE Gen3_N88-63700	9a, 9b



SPECIAL SEISMIC CERTIFICATION CERTIFIED SUBCOMPONENTS



SGH PROJECT NO. 248143.00-SCOT

Manufacture Info		Seismic Parameters						Building Codes	
Manufacturer:	Scott Springfield Mfg., Inc.	S_{DS}	z / h	H_f / R_h	A_{FLX-H}	A_{RIG-H}	A_{FLX-V}	A_{RIG-V}	CBC 2025
Product Type:	Custom Air Handling Units	1.93	1.0	2.69	3.09	2.08	1.29	0.52	ASCE 7-22
Model Line:	Scott Springfield Custom Air Handling Units	1.93	0.0	1.0					

TABLE 6 Fan Motors

Model Line (Manufacturer)	Model	Dimension (in)			Weight (lb)	Description ¹	Notes	UUT
		Depth	Width	Height				
Horizontal Shaft Fan Motor (Baldor-Reliance)	EM30010				31		0.5 HP	1
			Interp.
	EM3156T				33	230V/46V; 3-phase	1 HP	1
			Interp.
	EM3611T				66		3 HP	1
			Interp.
	EM2524T				270		15 HP Qty. 6	2
			Interp.
	EM2528T				258	230V/460V;3-phase	20 HP	4, 5
...				...			Interp.	
EM2557T-4				1513		125 HP	6, 7	
Vertical Shaft Fan Motor (Baldor-Reliance)	EM30010				33		0.5 HP	Extrap.
			Extrap.
	EM3218T				77	230V/460V;3-phase	5 HP	1
			Interp.
	EM2532T				383		25 HP	3
			Interp.
EM2583T-4				1455		100 HP	7	
Horizontal Shaft Fan Motor (Weg)	00118ET3E143T- W22S				44	230V/460V;3-phase	1 HP Qty. 2	8a, 8b

REVIEWED FOR CODE COMPLIANCE

HCAi

OSP-248

DATE: 03/17/2026

BY: Mohamad Karim

CALIFORNIA BUILDING CODE, 2025

Footnotes

1 - 230/460 motors are dual voltage with no physical differences other than wiring connection to run at alternative voltage

2 - EC fan motors are integrated with each fan unit, see Table 5 for weights and dimensions

SPECIAL SEISMIC CERTIFICATION CERTIFIED SUBCOMPONENTS



SGH PROJECT NO. 248143.00-SCOT

Manufacture Info		Seismic Parameters						Building Codes	
Manufacturer:	Scott Springfield Mfg., Inc.	S_{DS}	z / h	H_f / R_p	A_{FLX-H}	A_{RIG-H}	A_{FLX-V}	A_{RIG-V}	CBC 2025
Product Type:	Custom Air Handling Units	1.93	1.0	2.69	3.09	2.08	1.29	0.52	ASCE 7-22
Model Line:	Scott Springfield Custom Air Handling Units	1.93	0.0	1.0					

TABLE 6 Fan Motors

Model Line (Manufacturer)	Model	Dimension (in)			Weight (lb)	Description ¹	Notes	UUT
		Depth	Width	Height				
GR##I, EC, Direct Drive (Ziehl-Abegg) ²	GR31	14	18	18	40	460V; 3-phase	2.4 kW GR31IZID.DC.CR_116889/A01	9a, 9b
	...							Interp.
	GR56	24	29	29	148	460V;3-phase	5.2 kW GR56IZID.GQ.CR_116909/A01	9a, 9b
EG1R, EC, Direct Drive (ebm-papst) ²	EG1R240355	15	20	20	61	230V; 3-phase	2.9 kW EG1R240355A26_M3G112-GA	9a, 9b
	...							Interp.
	EG1R575310	15	20	20	62	575V; 3-phase	3.6 kW EG1R575310A26_M3G112-GA	9a, 9b
	...							Interp.
	EG1R480630	22	32	32	160	460V; 3-phase	4.4 kW EG1R480630A26_M3G150-NA	9a, 9b
GKHM EC Direct Drive (Rosenberg) ²	GKHM 280	11	17	17	31	230V; 3-phase	0.9 kW GKHM 280-CIB.090.4FF IE MX_N88-28340	9a, 9b
	...							Interp.
	GKHM 630	24	32	32	161	460V; 3-phase	4.4 kW; Qty. 9; GKHM 630-CII.200.6NA IE Gen3_N88-63700	9a, 9b

Footnotes
¹ - 230/460 motors are dual voltage with no physical differences other than wiring connection to run at alternative voltage
² - EC fan motors are integrated with each fan unit; weights and dimensions are the same as listed in Table 5.

SPECIAL SEISMIC CERTIFICATION CERTIFIED SUBCOMPONENTS



SGH PROJECT NO. 248143.00-SCOT

Manufacture Info		Seismic Parameters						Building Codes	
Manufacturer:	Scott Springfield Mfg., Inc.	S_{DS}	z / h	H_f / R_h	A_{FLX-H}	A_{RIG-H}	A_{FLX-V}	A_{RIG-V}	CBC 2025
Product Type:	Custom Air Handling Units	1.93	1.0	2.69	3.09	2.08	1.29	0.52	ASCE 7-22
Model Line:	Scott Springfield Custom Air Handling Units	1.93	0.0	1.0					

TABLE 7 Coils

Model Line (Manufacturer)	Model	Dimension (in) ¹			Weight (lb) ^{1,2,3}	Material ⁵	Notes ⁴	UUT
		Depth	Width	Height				
Water Coil (Heatcraft by Modine)	Coil: 5MQ0601A Rack: None	5	12	12	42	0.625"x0.020" Copper tubes; 0.0060" Copper fins; 304 SS casing	Single coil 1 row; 8 FPI; fin shape A Red Brass MPT 1.5" connection	2
	Interp.
	Coil: 5WH1208B Rack: Standard Rack Design	12.5	48	27	168	0.625"x0.020" Copper tubes; 0.0095" Aluminum fins; Galv. Steel casing	2-high stack staggered mounting (bottom & top); 8 row; 12 FPI; fin shape B Red Brass MPT 1.5" connection	2
	Interp.
	Coil: 5WS0808A Rack: Heavy Rack Design	12.5	103	10.5	257	0.625"x0.020" Copper tubes; 0.0060" Aluminum fins; 304 SS casing	3-high stack staggered mounting (left bottom, right bottom); 8 row; 8 FPI; fin shape A Red Brass MPT 1.5" connection	9a, 9b
	Interp.
	Coil: 5WS0808A Rack: Heavy Rack Design	12.5	192	10.5	466	0.625"x0.020" Copper tubes; 0.0060" Aluminum fins; 304 SS casing	3-high stack mounting (bottom); 8 row; 8 FPI; fin shape A Red Brass MPT 1.5" connection	8a, 8b
	Interp.
Coil: 4WS0806A Rack: Heavy Rack Design	9.0	103	53.75	650	0.500"x0.016" Copper tubes; 0.0060" Aluminum fins; 304 SS casing	3-high stack staggered mounting (right top); 6 row; 8 FPI; fin shape A Red Brass MPT 1.5" connection	9a, 9b	
...	Interp.	
Coil: 5WS0808A Rack: Heavy Rack Design	12.5	103	49.5	989	0.625"x0.020" Copper tubes; 0.0060" Aluminum fins; 304 SS casing	3-high stack staggered mounting (left middle, right middle); 8 row; 8 FPI; fin shape A Red Brass MPT 1.5" connection	9a, 9b	

Footnotes

- 1 - Dimensions and weights provided for single coils
- 2 - Certification limited to maximum total coil stack weight of 6064 lb for heavy rack (three-stack UUT 8: 3817 lb + 1781 lb + 466 lb) and 4520 lb for standard rack (two-stack UUT 3: 2260 lb + 2260 lb)
- 3 - Coil weights include water
- 4 - Coil mounting to staggered and non-staggered stacked racks use the same connection details
- 5 - Minimum water coil certified wall thickness for 0.625" diameter tubes is 0.020". Minimum certified wall thickness for 0.5" diameter tubes is 0.016".

SPECIAL SEISMIC CERTIFICATION CERTIFIED SUBCOMPONENTS



SGH PROJECT NO. 248143.00-SCOT

Manufacture Info		Seismic Parameters						Building Codes	
Manufacturer:	Scott Springfield Mfg., Inc.	S_{DS}	z / h	H_f / R_h	A_{FLX-H}	A_{RIG-H}	A_{FLX-V}	A_{RIG-V}	CBC 2025
Product Type:	Custom Air Handling Units	1.93	1.0	2.69	3.09	2.08	1.29	0.52	ASCE 7-22
Model Line:	Scott Springfield Custom Air Handling Units	1.93	0.0	1.0					

TABLE 7 Coils

Model Line (Manufacturer)	Model	Dimension (in) ¹			Weight (lb) ^{1,2,3}	Material ⁵	Notes ⁴	UUT
		Depth	Width	Height				
Water Coil (Heatcraft by Modine)	Coil: 5WS0808A Rack: Heavy Rack Design	12.5	103	54	1073	0.625"x0.020" Copper tubes; 0.0060" Aluminum fins; 304 SS casing	3-high stack staggered mounting (left top); 8 row; 8 FPI; fin shape A Red Brass MPT 1.5" connection	Interp. 9a, 9b
	Coil: 5WS0808C Rack: Heavy Rack Design	12.5	192	49.5	1781	0.625"x0.020" Copper tubes; 0.0060" Aluminum fins; 304 SS casing	3-high stack mounting (middle); 8 row; 8 FPI; fin shape C Red Brass MPT 1.5" connection	Interp. 8a, 8b
	Coil: 5WD1208B Rack: Standard Rack Design	13	124	54	2260	0.625"x0.020" Copper tubes; 0.0095" Aluminum fins; Galv. steel casing	2-high stack mounting (top and bottom) 8 row; 12 FPI, fin shape B Red Brass MPT 1.5" connection	Interp. 3
	Coil: 5WS1208B Rack: Heavy Rack Design	12.5	192	54	3817	0.625"x0.035" Copper tubes; 0.0160" Aluminum fins; 304 SS casing	3-high stack mounting (top); 8 row; 12 FPI; fin shape B Red Brass MPT 4.0" connection	Interp. 8a, 8b
	Interp.

REVIEWED FOR CODE COMPLIANCE
BY: Mohammad Sami
DATE: 03/17/2026
CALIFORNIA BUILDING CODE, 2025
HCA
OSP-0248

Footnotes

1 - Dimensions and weights provided for single coils

2 - Certification limited to maximum total coil stack weight of 6064 lb for heavy rack (three-stack UUT 8: 3817 lb + 1781 lb + 466 lb) and 4520 lb for standard rack (two-stack UUT 3: 2260 lb + 2260 lb)

3 - Coil weights include water

4 - Coil mounting to staggered and non-staggered stacked racks use the same connection details

5 - Minimum water coil certified wall thickness for 0.625" diameter tubes is 0.020". Minimum certified wall thickness for 0.5" diameter tubes is 0.016".

SPECIAL SEISMIC CERTIFICATION CERTIFIED SUBCOMPONENTS



SGH PROJECT NO. 248143.00-SCOT

Manufacture Info		Seismic Parameters						Building Codes	
Manufacturer:	Scott Springfield Mfg., Inc.	S_{DS}	z / h	H_f / R_h	A_{FLX-H}	A_{RIG-H}	A_{FLX-V}	A_{RIG-V}	CBC 2025
Product Type:	Custom Air Handling Units	1.93	1.0	2.69	3.09	2.08	1.29	0.52	ASCE 7-22
Model Line:	Scott Springfield Custom Air Handling Units	1.93	0.0	1.0					

TABLE 8 Dampers & Louvers

Model Line (Manufacturer)	Model	Dimension (in)			Weight (lb)	Material	Notes	UUT
		Depth	Width	Height				
Dampers ¹ (Tamco)	1000	4	6	6	1			Extrap.
				Extrap.
		4	24	24	16		Opposed Blade	2
		4	24	24	16	Aluminum Frame; Aluminum Blades	Parallel Blade	2
				Interp.
		4	60	36	60		Opposed Blade	1
	9000	4	60	36	60		Parallel Blade	1
					Interp.
			48	75	100		Opposed Blade	8a
		4	6	6	1			Extrap.
					Extrap.
			60	30	50	Aluminum Frame; Aluminum Blades	Opposed Blade	1
	7000	4	48	75	150		Parallel Blade	8a
			6	6	1			Extrap.
				Extrap.	
		4	20	20	8	Aluminum Frame; Aluminum Blades		8a
Louvers (Greenheck)	ESD-435	4	24	36	24	Aluminum Frame; Aluminum Blades	Horizontal Blade	1
		6	24	30	20	Aluminum Frame; Aluminum Blades	Vertical Blade	1
Louvers (Westvent)	XTF-435V	4	12	12	5		Horizontal Blade	8a
				Interp.
		4	48	60	100	Aluminum Frame; Aluminum Blades		8a
				Interp.
		4	60	48	100		Horizontal Blade	8a

Footnotes

1 - Damper actuators included in testing are listed in the electrical components table

SPECIAL SEISMIC CERTIFICATION CERTIFIED SUBCOMPONENTS

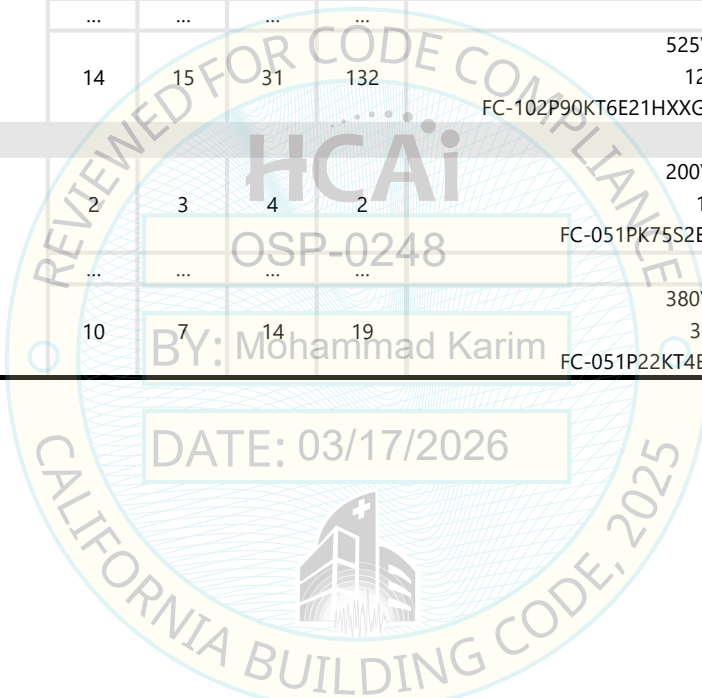


SGH PROJECT NO. 248143.00-SCOT

Manufacture Info		Seismic Parameters						Building Codes	
Manufacturer:	Scott Springfield Mfg., Inc.	S_{DS}	z / h	H_f / R_h	A_{FLX-H}	A_{RIG-H}	A_{FLX-V}	A_{RIG-V}	CBC 2025
Product Type:	Custom Air Handling Units	1.93	1.0	2.69	3.09	2.08	1.29	0.52	ASCE 7-22
Model Line:	Scott Springfield Custom Air Handling Units	1.93	0.0	1.0					

TABLE 9 Variable Frequency Drives (VFDs)

Model Line (Manufacturer)	Model	Dimension (in)			Weight (lb)	Description	UUT
		Depth	Width	Height			
VLT HVAC Drive (Danfoss)	FC-102	9	4	15	11	200V/240V; 1.5 HP; FC-102P1K1T2E21H2XGXXXXXXXAXBXCXXXXDX	1
			Interp.
		14	15	31	132	525V/600V; 125 HP; FC-102P90KT6E21HXXGXXXXXXXAXBXCXXXXDX	3, 8a, 8b
VLT Micro Drive FC-51 (Danfoss)	FC-051	2	3	4	2	200V/240V; 1 HP; FC-051PK75S2E20H3XXCXXXXXXX	1
			Interp.
		10	7	14	19	380V/480V; 30 HP; FC-051P22KT4E20H3BXCXXXXXXX	1



SPECIAL SEISMIC CERTIFICATION CERTIFIED SUBCOMPONENTS

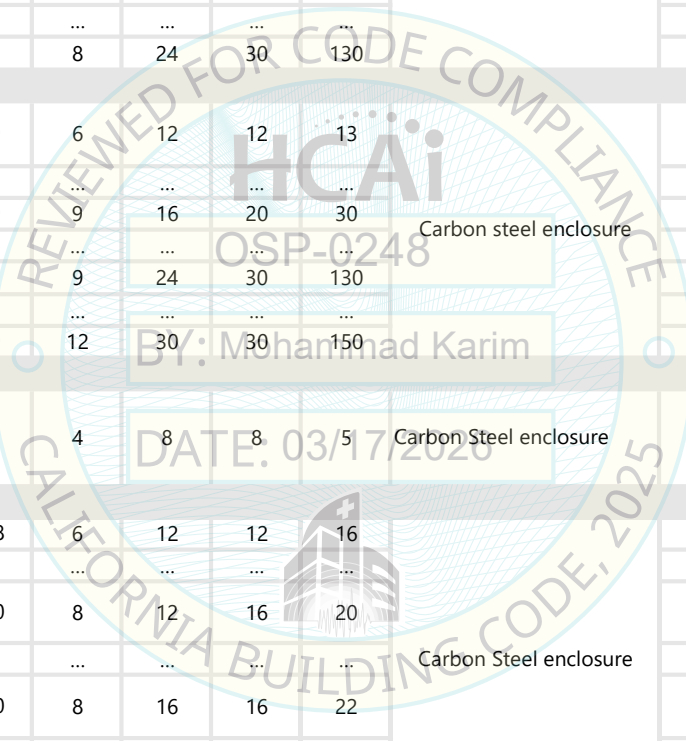


SGH PROJECT NO. 248143.00-SCOT

Manufacture Info		Seismic Parameters						Building Codes	
Manufacturer:	Scott Springfield Mfg., Inc.	S_{DS}	z / h	H_f / R_h	A_{FLX-H}	A_{RIG-H}	A_{FLX-V}	A_{RIG-V}	CBC 2025
Product Type:	Custom Air Handling Units	1.93	1.0	2.69	3.09	2.08	1.29	0.52	ASCE 7-22
Model Line:	Scott Springfield Custom Air Handling Units	1.93	0.0	1.0					

TABLE 10 Control Boxes

Model Line (Manufacturer)	Model	Dimension (in)			Weight (lb)	Material	Notes	UUT
		Depth	Width	Height				
CSD (Hoffman)	CSD12126	6	12	12	13.2	Carbon steel enclosure		Extrap.
			Extrap.
	CSD20168	8	16	20	30			1
			Interp.
	CSD30248	8	24	30	130		2	
AE (Rittal)	AE 1036.500	6	12	12	13	Carbon steel enclosure		8a, 8b
			Interp.
	AE 1045.500	9	16	20	30			1
			Interp.
	AE 1076.500	9	24	30	130			2
		Interp.	
	AE 1073.500	12	30	30	150		1	
JB(Rittal)	JB8018.105	4	8	8	5	Carbon Steel enclosure		8a, 8b, 9a, 9b
WM(Rittal)	WM8017.528	6	12	12	16	Carbon Steel enclosure		9a, 9b
			Interp.
	WM1034.250	8	12	16	20			8a, 8b
			Interp.
	WM1244.250	8	16	16	22			8a, 8b
			Interp.
	WM1073.250	12	30	30	120		9a, 9b	



SPECIAL SEISMIC CERTIFICATION CERTIFIED SUBCOMPONENTS

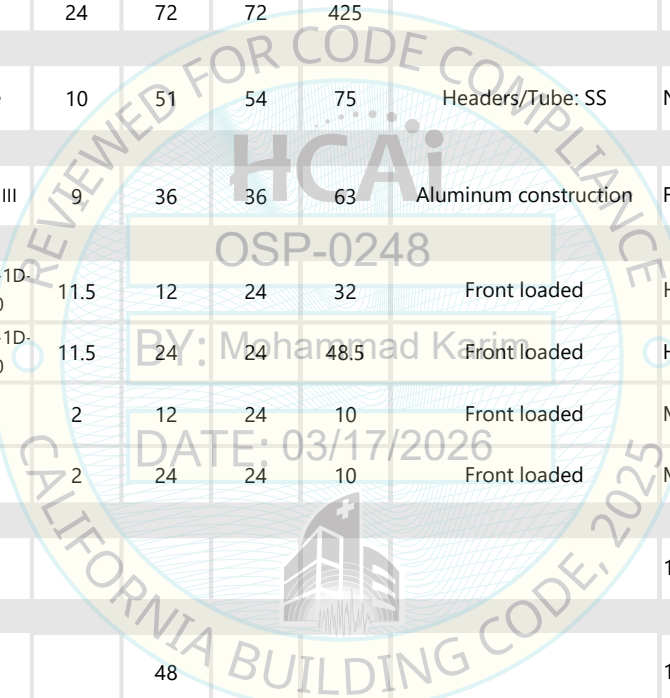


SGH PROJECT NO. 248143.00-SCOT

Manufacture Info		Seismic Parameters						Building Codes	
Manufacturer:	Scott Springfield Mfg., Inc.	S_{DS}	z / h	H_f / R_h	A_{FLX-H}	A_{RIG-H}	A_{FLX-V}	A_{RIG-V}	CBC 2025
Product Type:	Custom Air Handling Units	1.93	1.0	2.69	3.09	2.08	1.29	0.52	ASCE 7-22
Model Line:	Scott Springfield Custom Air Handling Units	1.93	0.0	1.0					

TABLE 11 Miscellaneous

Component (Manufacturer)	Model	Dimension (in)			Weight (lb)	Material	Notes	UUT
		Depth	Width	Height				
Sound Attenuator (Vibro-Acoustics)	RD-ULV-F4	24	36	36	106	Galv. Steel and Fibreglass		1
				Interp.
		24	72	72	425			1
Humidifier Grid (Nortec/Condaair)	Nortec SAM-e	10	51	54	75	Headers/Tube: SS	Nortec acquired by Condaair	2
Air Blender (KEES)	Air Mixer Series III	9	36	36	63	Aluminum construction	Fixed Blade	1
Filter (FARR)	01XH-24Z12Z12-1D-3-C-A-00-0/00	11.5	12	24	32	Front loaded	HEPA	1
	01XH-24Z24Z12-1D-3-C-A-00-0/00	11.5	24	24	48.5	Front loaded	HEPA	1
	49880-005	2	12	24	10	Front loaded	MERV 8	2
	49880-006	2	24	24	10	Front loaded	MERV 8	2
UV Lights (UV Resources)	Hornet						18" max length	2
UV Lights (UVDI)			48				120V/240V	9a, 9b
Transformer (Allen Bradley)	1497-E-BASX-3-N				11.6		250VA transformer with 2 primary, 1 secondary fuse block	1



SPECIAL SEISMIC CERTIFICATION SUMMARY SHEET



SGH PROJECT NO. 248143.00-SCOT

Manufacture Info

Manufacturer: Scott Springfield Mfg., Inc.
Model Line: Scott Springfield Custom Air Handling Units

UUT	Unit Description	Test Report No. (Facility UUT No.)	Test Dates	Testing Laboratory	S.DS	z / h
1	AHU Cabinet	Q1117 (Q1117-01-01-01)	5.9.2011 to 5.11.2011	QualTech NP by Curtiss- Wright	1.93 ---- 1.93	1.0 ---- 0.0
2	AHU Cabinet (multiple configurations, see UUT summary sheet)	PEER-STI/2011-06 (UUT2)	5.16.2011 to 5.18.2011	Pacific Earthquake Engineering Research Center (PEER)	1.93 ---- 1.93	1.0 ---- 0.0
3	AHU Cabinet (multiple configurations, see UUT summary sheet)	PEER-STI/2011-06 (UUT3)	9.20.2011 to 9.21.2011	Pacific Earthquake Engineering Research Center (PEER)	1.93 ---- 1.93	1.0 ---- 0.0
4	Twin City Arr.4 Plenum Horizontal Shaft 542	Q1117 (Q1117-02-01-01)	5.9.2011 to 5.11.2011	Qual Tech NP by Curtiss- Wright	1.93 ---- 1.93	1.0 ---- 0.0
5	Twin City Arr.3 DWDI-AF 542 - 20HP	Q1117 (Q1117-03-01-01)	5.9.2011 to 5.11.2011	Qual Tech NP by Curtiss- Wright	1.93 ---- 1.93	1.0 ---- 0.0
6	Twin City Arr.3 DWDI-542 - 125HP	13199 Rev. 0 (UUT 6)	4.28.2014	Environmental Testing Laboratory (ETL)	2.00 ---- 2.00	1.0 ---- 0.0
7	Fan Skid	13199 Rev. 0 (UUT 7)	4.28.2014	Environmental Testing Laboratory (ETL)	2.00 ---- 2.00	1.0 ---- 0.0
8a	AHU Cabinet (inlet wall removed, with bracing)	SGH 248143-R-1 (UUT 8a)	9.10.2025	Pacific Earthquake Engineering Research Center (PEER)	2.00 ---- 2.00	1.0 ---- 0.0
8b	AHU Cabinet (inlet & outlet wall removed, with bracing)	SGH 248143-R-1 (UUT 8b)	9.15.2025	Pacific Earthquake Engineering Research Center (PEER)	2.00 ---- 2.00	1.0 ---- 0.0
9a	AHU Cabinet (inlet & outlet wall removed, with bracing)	SGH 248143-R-1 (UUT 9a)	9.12.2025	Pacific Earthquake Engineering Research Center (PEER)	2.00 ---- 2.00	1.0 ---- 0.0
9b	AHU Cabinet (inlet & outlet wall removed, without bracing)	SGH 248143-R-1 (UUT 9b)	9.12.2025	Pacific Earthquake Engineering Research Center (PEER)	2.00 ---- 2.00	1.0 ---- 0.0

SPECIAL SEISMIC CERTIFICATION UUT SUMMARY SHEET



SGH PROJECT NO. 248143.00-SCOT

UUT 1 QualTech NP: Q1117 (Facility UUT No. Q1117-01-01-01)

Manufacture Info

Manufacturer: Scott Springfield Mfg., Inc.
Model Line: Scott Springfield Custom Air Handling Units

Product Info

Model No.: N/A
Serial No.: N/A

Construction/Options Summary

Tested with no walls removed. Wall panels 2" thick made of 16ga Galv. carbon steel with galvanized carbon steel liners (22ga washdown (WD) liners) and 2" Rockwool insulation. 6" base floor. Internally isolated fans.

Weight	Dimensions (in)		
	Depth	Width	Height
4,300 lb 64 psf	98	98	98

Lowest Natural Frequency (Hz)		
Front-Back	Side-Side	Vertical
10.9	10.5	>33.3

Building Code
CBC 2025, ASCE 7-22

Test Criteria
ICC-ES AC156-24

UUT Highest Passed Seismic Run					
S.DS	z / h	A _{FLX-H} (g)	A _{RIG-H} (g)	A _{FLX-V} (g)	A _{RIG-V} (g)
1.93	1.0	3.09	2.32	1.29	0.51
1.93	0.0				

Test Mounting Details
Rigid base mounted using twelve (12) 5/8" A325 bolts with standard anchor clips at each end and at 45" o.c. max.
Contents were included in testing per operating conditions.
Unit maintained structural integrity and remained functional per manufacturer requirement after shake table test.

Included Subcomponents		
Comp.	Mfr.	Description
Fan Array + (Motor)	Ziehl-Abegg (Baldor-Reliance)	Fan model: ER22C Mounting: 1Wx1H carbon steel array (EM30010 - 0.5 HP, 230/460V)
Floor-Mount Fan + (Motor)	Twin City (Baldor-Reliance)	EPQN 122 (EM3611T - 3HP 230/460V) EPQN182 (EM3218T - 5HP, 230/460V) BAE-DWDI122 (EM3156T - 1 HP, 230/460V)
Louver	Greenheck	ESD-435 4Dx24Wx36H EVH-602 4Dx24Wx30H
Damper	Tamco	Model 9000 OB 60Wx30H Model 1000 PB 60Wx36H
Sound Attenuator	Vibro-Acoustics	(4) RD-ULV-F4 24Dx36Wx36H RD-ULV-F4 24Dx72Wx72H
Filter	FARR	(3) 01XH-24Z24Z12-1D-3-C-A-00-0/00 01XH-24Z12Z12-1D-3-C-A-00-0/00
Blender	KEES Hoffman	Air Mixer Series III 36Wx36H CSD20168
Ctrl Box	Rittal	AE 1045.500 AE 1073.500
VFD	Danfoss	FC-051 1HP(200/240V) - M1 frame FC-102 1.5HP(200/240V) - A2 frame FC-051 30HP(380/480V) - M5 frame



SPECIAL SEISMIC CERTIFICATION UUT SUMMARY SHEET

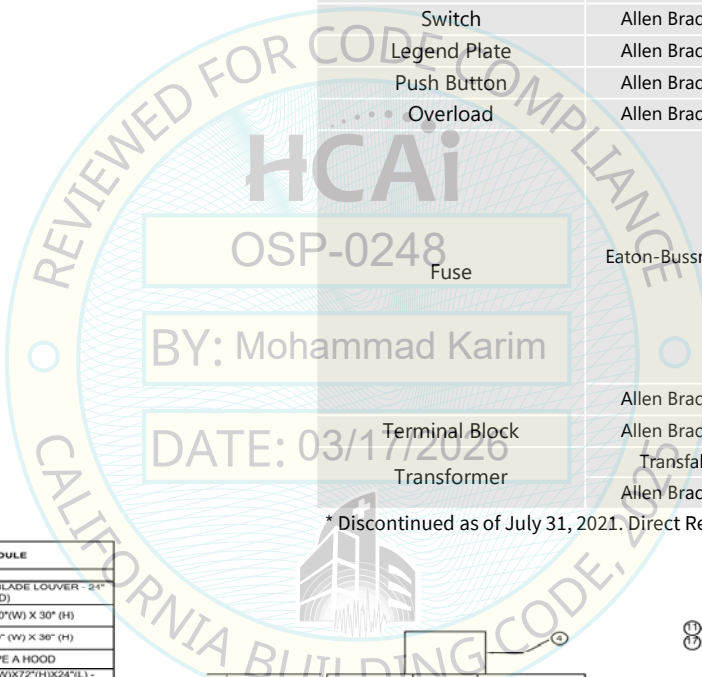


SGH PROJECT NO. 248143.00-SCOT

UUT 1 QualTech NP: Q1117 (Facility UUT No. Q1117-01-01-01)

Included Subcomponents (Continued)

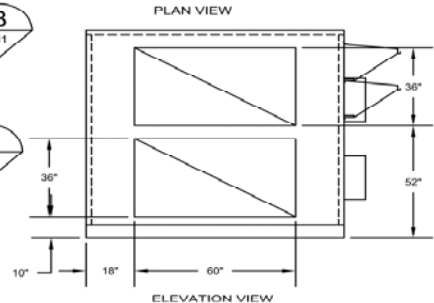
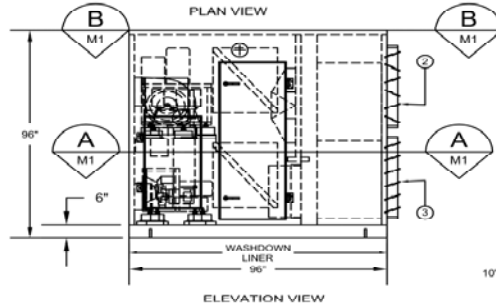
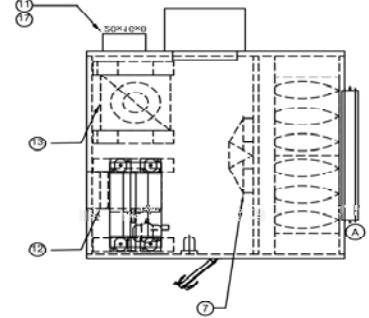
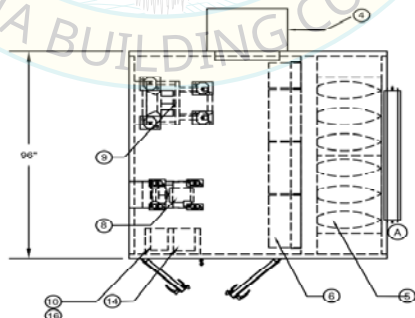
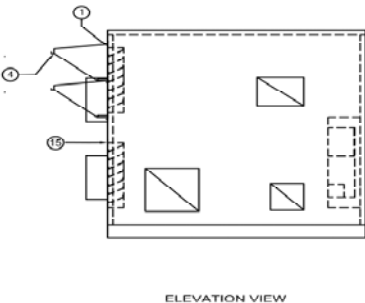
Comp.	Mfr.	Description
Relay	Allen Bradley	700-HLT1U24
Contact	Allen Bradley	100-SA11
Contactor	Allen Bradley	100-C09D10
Current Sensor	ACI	A/ASCS
Damper Actuator	Belimo	NFB24-S
Disconnect	Allen Bradley	194R-NN030P3
Indicating Light	Allen Bradley	800A-L2AR24
		800A-L2AG24
Switch	Allen Bradley	800T-J2A
Legend Plate	Allen Bradley	800T-X511
Push Button	Allen Bradley	800H-CRA16A
Overload	Allen Bradley	193-EED8 *
		KTS-R-3
		KTS-R-5
		KTS-R-10
		KTS-R-15
		H60030-3
		LPJ-15SP
		KTK-R-1-1/2
		KTK-R-2-1/2
	Allen Bradley	1492-FB3J30
	Allen Bradley	1492-PD3263
	Transfab	EXA15020
	Allen Bradley	1497-E-BASX-3-N



Unit Drawings:

TAG	COMPONENT
1	GREENHECK FIXED HORIZONTAL BLADE LOUVER - 24" (W) X 36" (H) X 4" (D)
2	TAMCO 9000 OB DAMPER - 60" (W) X 30" (H)
3	TAMCO 1000 FB DAMPER - 60" (W) X 30" (H)
4	SCOTT SPRINGFIELD TYPE A HOOD
5	VIBROACOUSTIC SILENCER 72" (W) X 72" (H) X 24" (L) - (4-36" (W) X 36" (H) X 24" (L) MODULES)
6	FARR HEPA FILTER BANK - 3 @ 24" X 24" & 1 @ 24" X 12"
7	KEES 36" X 36" AIR BLENDER
8	ZIEHL ARR. 4H PLN - 22CM @ 0.5HP (POWERED BY VFD (TAG #10))
9	TWIN CITY ARR. 4H PLN - 122 @ 3HP (POWERED BY STARTER (TAG #11))
10	DANFOSS VLT MICRODRIVE - 1 HP - M1 FRAME
11	SCOTT SPRINGFIELD - MOTOR STARTER PANEL - 16 X 20 X 8
12	TWIN CITY DWDI 4V ARR 3H 122 @ 1 HP (POWERED BY STARTER (TAG #11))
13	TWIN CITY ARR 4V PLN 182 @ 5 HP (POWERED BY VFD (TAG #14))
14	DANFOSS VLT HVAC - 1.5 HP - A2 FRAME - 11 Lbs.
15	GREENHECK FIXED BLADE VERTICAL LOUVER - 24" (W) X 36" (H) X 4" (D)
16	DANFOSS VLT MICRODRIVE - 30HP - M6 FRAME - 26 Lbs.
17	SCOTT SPRINGFIELD - CONTROL PANEL - 16 X 20 X 8

* Discontinued as of July 31, 2021. Direct Replacement: 193-1EFDB



SPECIAL SEISMIC CERTIFICATION

UUT SUMMARY SHEET



SGH PROJECT NO. 248143.00-SCOT

UUT 2 PEER: PEER-STI/2011-06

Manufacture Info

Manufacturer: Scott Springfield Mfg., Inc.
Model Line: Scott Springfield Custom Air Handling Units

Product Info

Model No.: N/A
Serial No.: N/A

Construction/Options Summary

Tested with 4 walls in place, 3 walls in place (outlet removed), 2 walls in place (side and outlet removed), and 1 wall in place (inlet, outlet, and side removed). Wall panels 4" thick made of 16ga Galv. carbon steel with Galv. carbon steel liners (22ga solid (S), 22ga washdown (WD), and 18ga wall on rib (WOR)), and 4" Rockwool insulation. 6" base floor.

Weight	Dimensions (in)		
	Depth	Width	Height
11,400 lb	96	144	144
119 psf			

Lowest Natural Frequency (Hz)		
Front-Back	Side-Side	Vertical
4.6	8.2	6.5

Building Code
CBC 2025, ASCE 7-22

Test Criteria
ICC-ES AC156-24

UUT Highest Passed Seismic Run					
S.DS	z / h	A _{FLX-H} (g)	A _{RIG-H} (g)	A _{FLX-V} (g)	A _{RIG-V} (g)
1.93	1.0	3.09	2.32	1.29	0.51
1.93	0.0				

Test Mounting Details

Rigid base mounted using twelve (12) 5/8" A325 bolts with standard anchor clips at each end and at 45" o.c. max. Contents were included in testing per operating conditions. Unit maintained structural integrity and remained functional per manufacturer requirement after shake table test.

Included Subcomponents

Comp.	Mfr.	Description
Fan Array + (Motors)	Ziehl-Abegg (Baldor-Reliance)	Fan model: ER50C (6 total) Mounting: 2Hx3W carbon steel array (EM2524T - 15HP, 230/460V - 6 total)
Damper Stagger Stacked Water Coil (Standard Rack Design)	Tamco Heatcraft	(2) Model 1000 Wide Series 24Wx24H 5WH1208B - 48"x27" (4 tot., 2 double stacks)
Water Coil	Heatcraft	5MQ0601A - 12"x12" (single coil)
Ctrl Box	Hoffman Rittal	CSD30248 AE 1076.500
Misc.	UV Resources Nortec	Hornet UV Light - 18" SAM-e humidifier grid - 51" x 54"
Filter	FARR	(4) 49880-0006 (2) 49880-005
Relay Base	Carlo Gavazzi	ZPY08
Relay	Omron	LY2-DC12
Connecting Lug	ABB	OZXA-25
Contactors	Eaton	C25DND330A
Disconnect	ABB	OT125E3P



Test with four walls in place

SPECIAL SEISMIC CERTIFICATION UUT SUMMARY SHEET



SGH PROJECT NO. 248143.00-SCOT

UUT 2 PEER: PEER-STI/2011-06

Additional Photos:

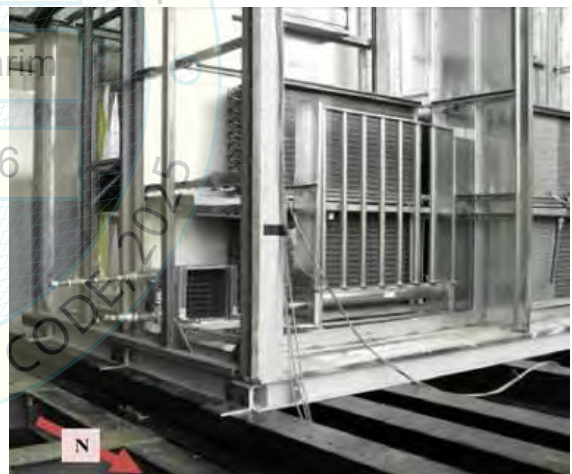


Test with three walls in place

Included Subcomponents (Continued)		
Comp.	Mfr.	Description
Indicating Light	Eaton	E22H3
		E22D24
Light Contact Block	Eaton	E22B2
		E22NS51
Legend Plate	Eaton	E22VBG1
Heater	Eaton	H2012B-3
Overload	Eaton	C306DN3B
Fuse	Mersen	TRS45R
		ATQR1-1/8
	Eaton-Bussmann	AGC-3-R
Fuse Block	Eaton-Bussmann	BM6032SQ
	Mersen	S-8301-1
Transformer	Transfab	60608R
	Hammond	EXA10036
Power Block		EXA35036
	Eaton	BF2G
		16220-3



Test with two walls in place



Test with one wall in place

REVIEWED FOR CODE COMPLIANCE
 CAi
 BY: Mohammad Karim
 DATE: 03/17/2026
 CALIFORNIA BUILDING CODE 2019
 OSP-0248

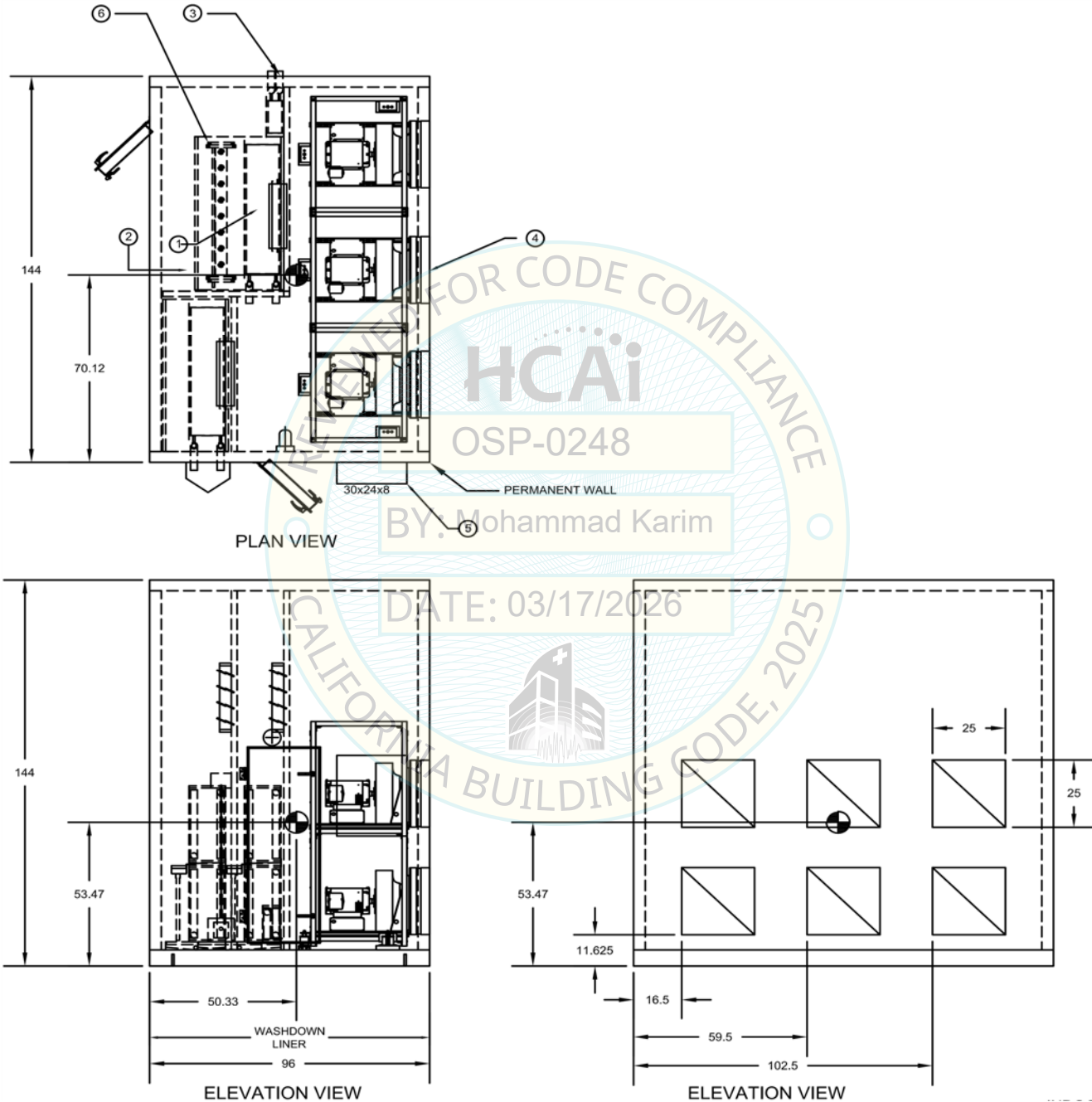
SPECIAL SEISMIC CERTIFICATION UUT SUMMARY SHEET



SGH PROJECT NO. 248143.00-SCOT

UUT 2 PEER: PEER-STI/2011-06

Unit Drawings:



SPECIAL SEISMIC CERTIFICATION UUT SUMMARY SHEET



SGH PROJECT NO. 248143.00-SCOT

UUT 3 PEER: PEER-STI/2011-06

Manufacture Info

Manufacturer: Scott Springfield Mfg., Inc.
Model Line: Scott Springfield Custom Air Handling Units

Product Info

Model No.: N/A
Serial No.: N/A

Construction/Options Summary

Tested with 4 walls in place, 2 walls in place (inlet and outlet removed), and 1 wall in place (inlet, outlet, and side walls removed). Panels 4" thick made of 16ga Galv. carbon steel with 22ga solid (S) Galv. carbon steel liners and 4" Rockwool insulation. 8" base floor. Internally isolated fan.

Weight	Dimensions (in)		
	Depth	Width	Height
12,480 lb	144	144	144
87 psf			

Lowest Natural Frequency (Hz)		
Front-Back	Side-Side	Vertical
6.7	7.0	8.3

Building Code
CBC 2025, ASCE 7-22

Test Criteria
ICC-ES AC156-24

UUT Highest Passed Seismic Run					
S.DS	z / h	A _{FLX-H} (g)	A _{RIG-H} (g)	A _{FLX-V} (g)	A _{RIG-V} (g)
1.93	1.0	3.09	2.32	1.29	0.51
1.93	0.0				

Test Mounting Details

Rigid base mounted using twenty (20) 5/8" A325 bolts with standard anchor clips at each end and at 45" o.c. max.
Contents were included in testing per operating conditions.
Unit maintained structural integrity and remained functional per manufacturer requirement.

Included Subcomponents

Comp.	Mfr.	Description
Floor-Mount	Twin City	EPQN490
Fan + (Motor)	(Baldor-Reliance)	(EM2532T - 25HP, 230/460V)
Stacked Water Coil Rack (Standard Rack Design)	Heatcraft	5WD1208B - 124"x54" (2-stack, top and bottom)
VFD	Danfoss	FC-102; 125 HP; 525V/600V
Damper	Tamco	Model 1000 60Wx30H
Power Block	Cutler-Hammer	16220-3
Fuse	Mersen	62003R
Fuse	Mersen	A6K110R



Test with four walls in place

SPECIAL SEISMIC CERTIFICATION UUT SUMMARY SHEET



SGH PROJECT NO. 248143.00-SCOT

UUT 3 PEER: PEER-STI/2011-06

Additional Photos:



Test with three walls in place



Test with one wall in place



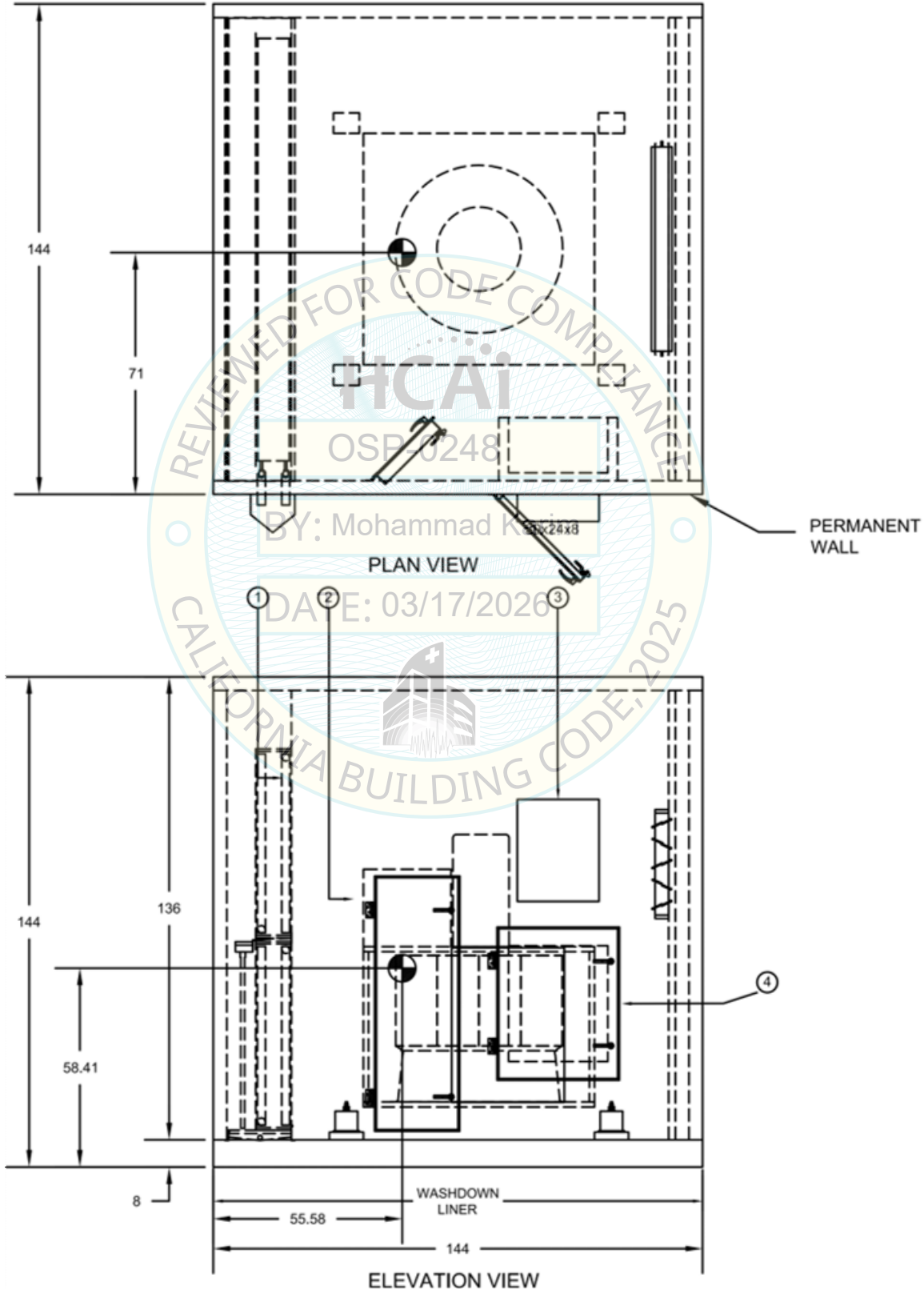
SPECIAL SEISMIC CERTIFICATION UUT SUMMARY SHEET



SGH PROJECT NO. 248143.00-SCOT

UUT 3 PEER: PEER-STI/2011-06

Unit Drawings:



SPECIAL SEISMIC CERTIFICATION UUT SUMMARY SHEET



SGH PROJECT NO. 248143.00-SCOT

UUT 4 QualTech NP: Q1117 (Facility UUT No. Q1117-02-01-01)

Manufacture Info

Manufacturer: Scott Springfield Mfg., Inc.
Model Line: Scott Springfield Custom Air Handling Units

Product Info

Model No.: N/A
Serial No.: N/A

Construction/Options Summary

(1) Carbon steel Twin City Arr.4 Plenum Horizontal Shaft 542 with (1) Baldor 20HP(230/460V).

Weight	Dimensions (in)			Lowest Natural Frequency (Hz)		
	Depth	Width	Height	Front-Back	Side-Side	Vertical
2,359 lb 73 psf	68	68	86	2.2	2.5	3.8

Building Code	Test Criteria	UUT Highest Passed Seismic Run					
		S.DS	z / h	A _{FLX-H} (g)	A _{RIG-H} (g)	A _{FLX-V} (g)	A _{RIG-V} (g)
CBC 2025, ASCE 7-22	ICC-ES AC156-24	1.93	1.0	3.09	2.32	1.29	0.51
		1.93	0.0				

Test Mounting Details

Isolated base mounted on manufacturer provided vibration isolators. Unit maintained structural integrity and remained functional per manufacturer requirement after shake table test.



Included Subcomponents

Comp.	Mfr.	Description
Fan + (Motor)	Twin City (Baldor-Reliance)	EPQN 542 (EM2528T; 20HP; 230/460V)
Contact	Cutler-Hammer	C320KGS3
Contactor	Eaton	C25DNF340A
	Eaton	C25FNF360A
	Eaton	C25FNE350T
Disconnect	ABB	OT80F3
Push Button	Allen Bradley	800H-CRA16A
Heater	Eaton	H2013B-3
Heater	Eaton	H2016B-3
Overload	Eaton	C306GN3B
	Eaton	C306DN3B
Power Block	Eaton	16220-3
Fuse	Mersen	ATQR2
	Mersen	TRS60R
	Mersen	TRS110R
Fuse Block	Eaton-Bussmann	AGC-1-R
	Mersen	60608R
	Eaton-Bussmann	S-8301-1
	Eaton-Bussmann	BM6032SQ

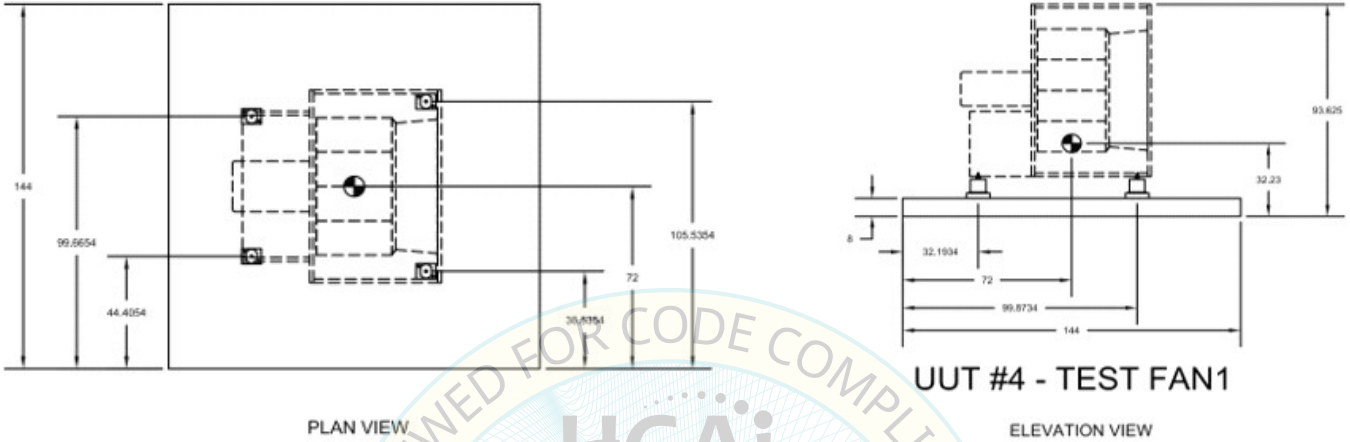
SPECIAL SEISMIC CERTIFICATION UUT SUMMARY SHEET



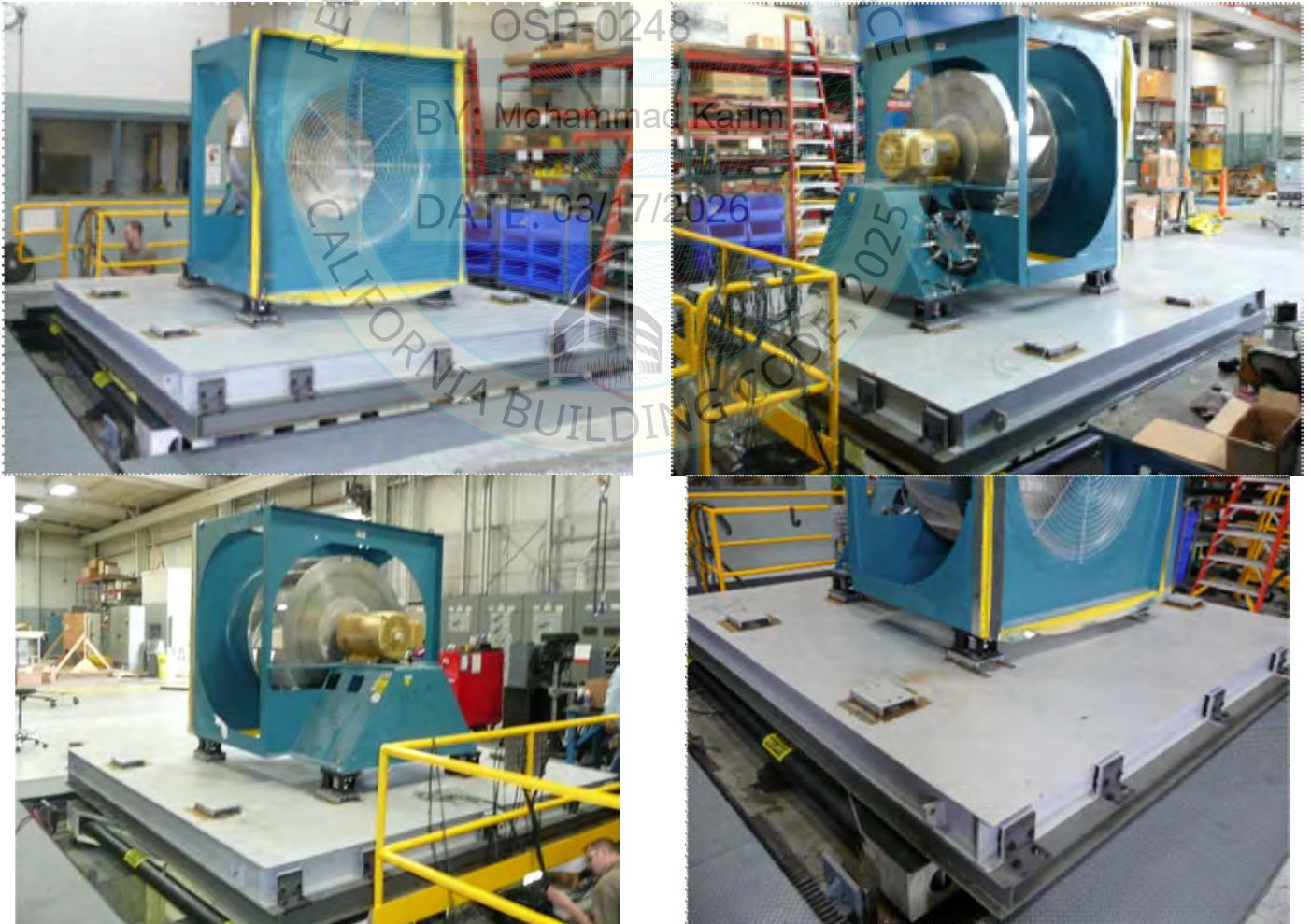
SGH PROJECT NO. 248143.00-SCOT

UUT 4 QualTech NP: Q1117 (Facility UUT No. Q1117-02-01-01)

Unit Drawings:



Additional Photos:



SPECIAL SEISMIC CERTIFICATION UUT SUMMARY SHEET



SGH PROJECT NO. 248143.00-SCOT

UUT 5 QualTech NP: Q1117 (Facility UUT No. Q1117-03-01-01)

Manufacture Info

Manufacturer: Scott Springfield Mfg., Inc.
Model Line: Scott Springfield Custom Air Handling Units

Product Info

Model No.: Fan Skid
Serial No.: N/A

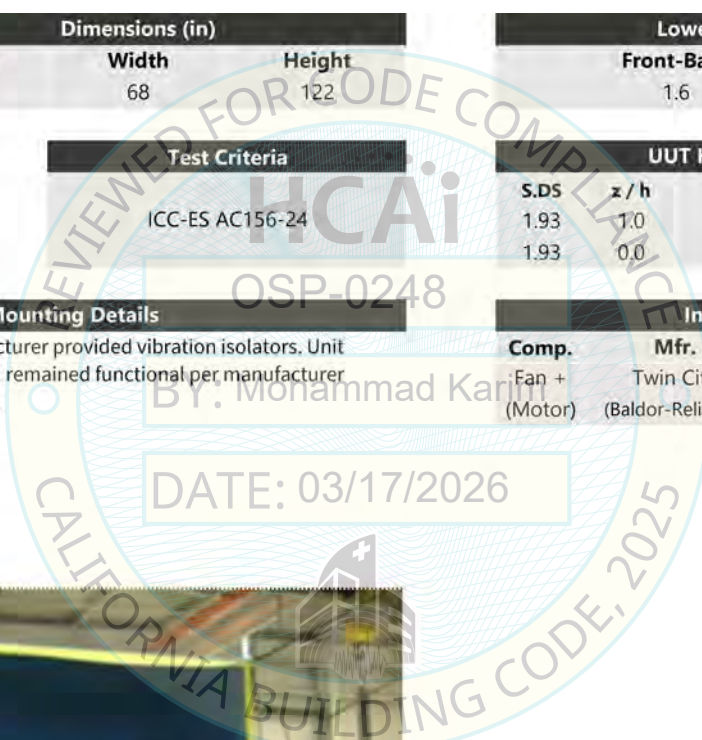
Construction/Options Summary

(1) Carbon steel Twin City Arr.3 DWDI-AF 542 with (1) Baldor 20HP(230/460V).

Weight	Dimensions (in)			Lowest Natural Frequency (Hz)		
	Depth	Width	Height	Front-Back	Side-Side	Vertical
5,796 lb 102 psf	120	68	122	1.6	3.9	6.2

Building Code	Test Criteria	UUT Highest Passed Seismic Run					
CBC 2025, ASCE 7-22	ICC-ES AC156-24	S.DS	z / h	A _{FLX-H} (g)	A _{RIG-H} (g)	A _{FLX-V} (g)	A _{RIG-V} (g)
		1.93	1.0	3.09	2.32	1.29	0.51
		1.93	0.0				

Test Mounting Details	Included Subcomponents		
Isolated base mounted on manufacturer provided vibration isolators. Unit maintained structural integrity and remained functional per manufacturer requirement after shake table test.	Comp.	Mfr.	Description
	Fan + (Motor)	Twin City (Baldor-Reliance)	BAE-DWDI542 (EM2528T; 20HP; 230/460V)



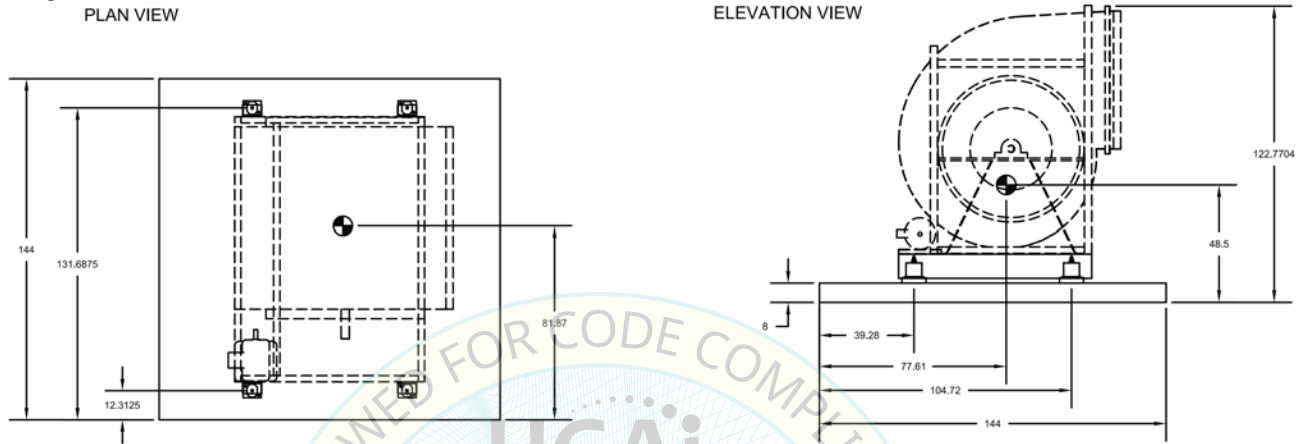
SPECIAL SEISMIC CERTIFICATION UUT SUMMARY SHEET



SGH PROJECT NO. 248143.00-SCOT

UUT 5 QualTech NP: Q1117 (Facility UUT No. Q1117-03-01-01)

Unit Drawings:



Additional Photos:



SPECIAL SEISMIC CERTIFICATION UUT SUMMARY SHEET



SGH PROJECT NO. 248143.00-SCOT

UUT 6 ETL: 13199 Rev. 0

Manufacture Info

Manufacturer: Scott Springfield Mfg., Inc.
Model Line: Scott Springfield Custom Air Handling Units

Product Info

Model No.: Fan Skid
Serial No.: N/A

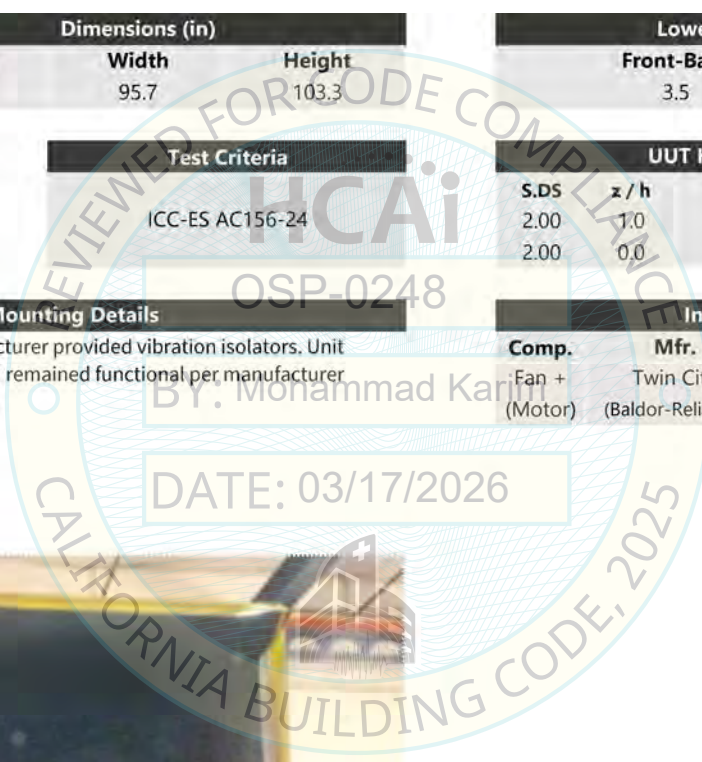
Construction/Options Summary

(1) Carbon steel Twin City Arr.3 DWDI-AF 542 with (1) Baldor 125HP(230/460V).

Weight	Dimensions (in)			Lowest Natural Frequency (Hz)		
	Depth	Width	Height	Front-Back	Side-Side	Vertical
7,910 lb 133 psf	89.3	95.7	103.3	3.5	3	5.4

Building Code	Test Criteria	UUT Highest Passed Seismic Run					
		S.DS	z / h	A _{FLX-H} (g)	A _{RIG-H} (g)	A _{FLX-V} (g)	A _{RIG-V} (g)
CBC 2025, ASCE 7-22	ICC-ES AC156-24	2.00	1.0	3.2	2.4	1.33	0.53
		2.00	0.0				

Test Mounting Details	Included Subcomponents		
	Comp.	Mfr.	Description
Isolated base mounted on manufacturer provided vibration isolators. Unit maintained structural integrity and remained functional per manufacturer requirement after shake table test.	Fan + (Motor)	Twin City (Baldor-Reliance)	BAE-DWDI542 (EM2557T-4; 125HP; 230/460V)



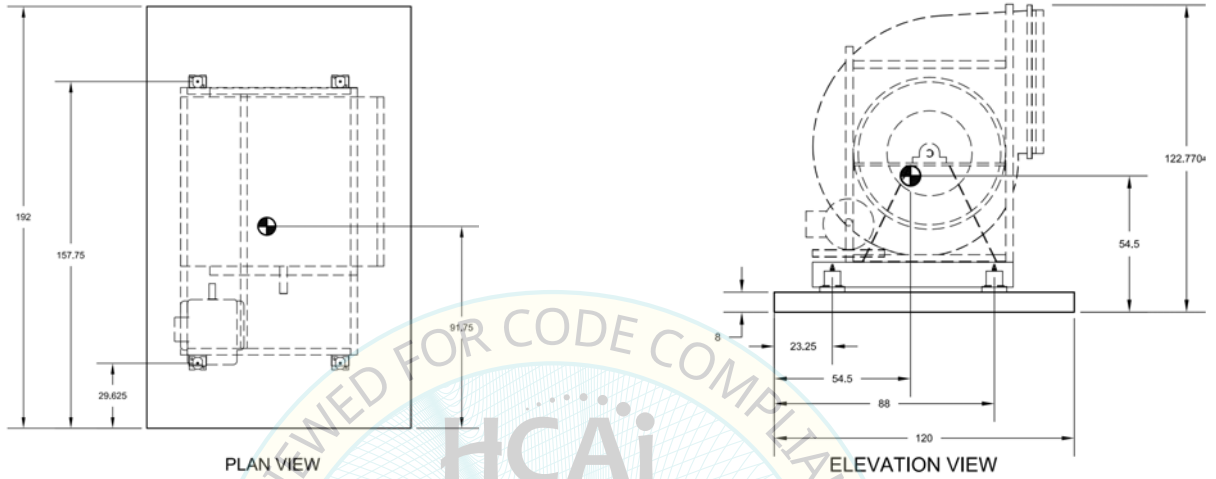
SPECIAL SEISMIC CERTIFICATION UUT SUMMARY SHEET



SGH PROJECT NO. 248143.00-SCOT

UUT 6 ETL: 13199 Rev. 0

Unit Drawings:



Additional Mounting Photos:



Pre-test:



Post-test:



SPECIAL SEISMIC CERTIFICATION UUT SUMMARY SHEET



SGH PROJECT NO. 248143.00-SCOT

UUT 7 ETL: 13199 Rev. 0

Manufacture Info

Manufacturer: Scott Springfield Mfg., Inc.
Model Line: Scott Springfield Custom Air Handling Units

Product Info

Model No.: Fan Skid
Serial No.: N/A

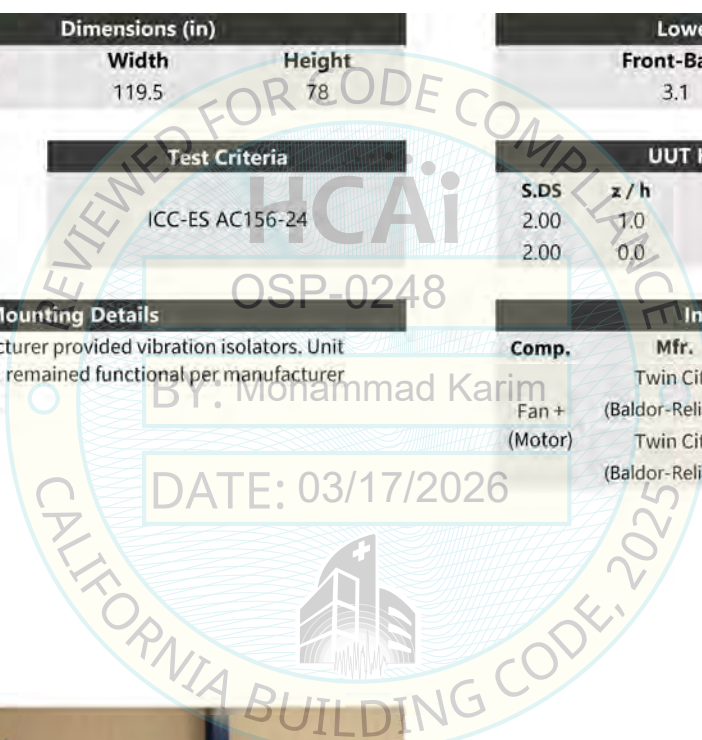
Construction/Options Summary

- (1) Carbon steel Twin City Arr.4 Vertical Shaft 490 with (1) Baldor 100HP(230/460V).
- (1) Carbon steel Twin City Arr.4 Plenum Horizontal Shaft 542 with (1) Baldor 125HP(230/460V).

Weight	Dimensions (in)			Lowest Natural Frequency (Hz)		
	Depth	Width	Height	Front-Back	Side-Side	Vertical
8,790 lb 55 psf	191.5	119.5	78	3.1	3.1	5.4

Building Code	Test Criteria	UUT Highest Passed Seismic Run					
CBC 2025, ASCE 7-22	ICC-ES AC156-24	S.DS	z / h	A _{FLX-H} (g)	A _{RIG-H} (g)	A _{FLX-V} (g)	A _{RIG-V} (g)
		2.00	1.0	3.2	2.4	1.33	0.53
		2.00	0.0				

Test Mounting Details	Included Subcomponents		
Isolated base mounted on manufacturer provided vibration isolators. Unit maintained structural integrity and remained functional per manufacturer requirement after shake table test.	Comp.	Mfr.	Description
	Fan +	Twin City	EPQN490
	(Motor)	(Baldor-Reliance)	(EM2583T-4; 100HP; 230/460V)
		Twin City	BAE-DWDI542
	(Baldor-Reliance)	(EM2557T-4; 125HP; 230/460V)	



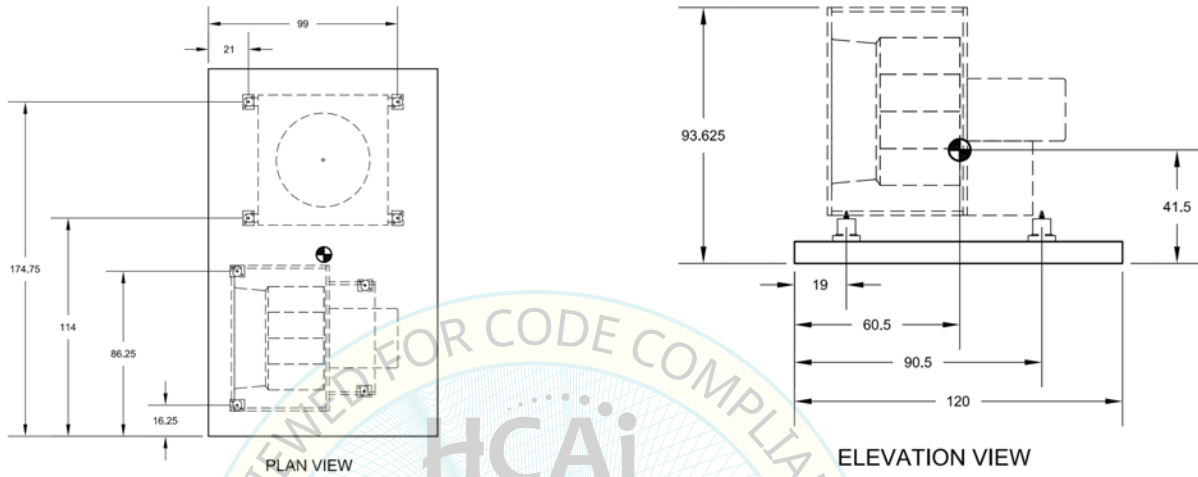
SPECIAL SEISMIC CERTIFICATION UUT SUMMARY SHEET



SGH PROJECT NO. 248143.00-SCOT

UUT 7 ETL: 13199 Rev. 0

Unit Drawings:



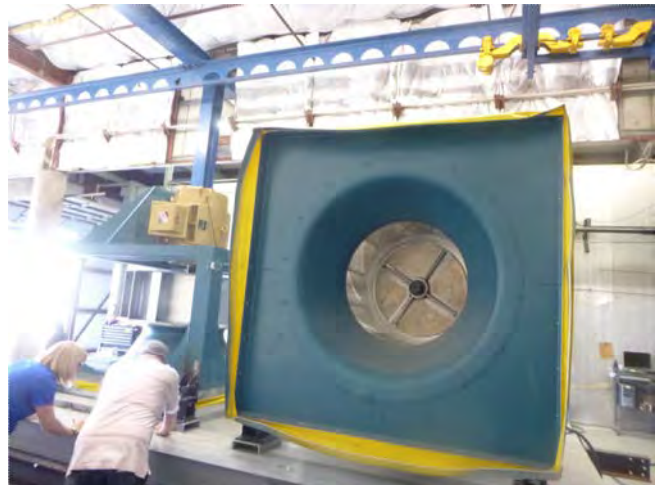
Additional Mounting Photos:



Pre-test:



Post-test:



SPECIAL SEISMIC CERTIFICATION UUT SUMMARY SHEET



SGH PROJECT NO. 248143.00-SCOT

UUT 8a SGH: 248143-R-1

Manufacture Info

Manufacturer: Scott Springfield Mfg., Inc.
Model Line: Scott Springfield Custom Air Handling Units

Product Info

Model No.: N/A
Serial No.: N/A

Construction/Options Summary

8a: Test with damper wall in place at outlet and x-braces in open end adjacent to coils. Wall panels 2" thick made of 16ga Galv. carbon steel with 22ga galvanized carbon steel perforated liners and 2" Rockwool insulation. 6" base floorframing with 1/8" aluminum checker plate. Internally isolated fans.

Weight	Dimensions (in)		
	Depth	Width	Height
20,883 lb 87 psf	144	240	144

Lowest Natural Frequency (Hz)		
Front-Back	Side-Side	Vertical
6.2	8.3	12

Building Code
CBC 2025, ASCE 7-22

Test Criteria
ICC-ES AC156-24

UUT Highest Passed Seismic Run					
S.DS	z / h	A _{FLX-H} (g)	A _{RIG-H} (g)	A _{FLX-V} (g)	A _{RIG-V} (g)
2.00	1.0	3.20	2.15	1.67	0.67
2.00	0.0				

Test Mounting Details
Rigid base mounted with (10) 5/8"-11 UNC heavy hex A325 bolts at 30" o.c. Contents were included in testing per operating conditions. Unit maintained structural integrity and remained functional per manufacturer requirement after shake table test.



Included Subcomponents		
Comp.	Mfr.	Description
Stacked Water Coil Rack (Heavy Rack Design)	Heatcraft	5WS1208B - 192"x54" (3-stack, top)
		5WS0808C - 192"x49.5" (3-stack, middle)
		5WS0808A - 192"x10.5" (3-stack, bottom)
Fan Bundle + (Motors)	Ziehl-Abegg	Fan Model: (2) ER50C Mounting: 1Wx2H carbon steel array
	Baldor-Reliance	2x(EM2513T-5; 15HP; 575V)
Stacked Fans + (motors)	Twin City	Fan Model: (2)EPFN122A Mounting: 1Wx2H carbon steel array
	Weg	2x(00118ET3E143T-W22S; 1HP; 230V/460V)
	Twin City	Fan Model: (2)EPFN300 Mounting: 1Wx2H carbon steel array
Dampers	Tamco	1x(05018ET3H326T-W22; 50HP; 575V)
		1x(05018ET3E326T-W22; 50HP; 230V/460V)
		Model 1000 OB 48Wx75H Model 9000 PB 48Wx75H Model 7000 CW 20Wx20H Model 7000 CW 36Wx36H
Louvers	Westvent	Model 435V 12Wx12H
		Model 435V 48Wx60H
		Model 435V 60Wx48H
VFD	Danfoss	FC-102 125HP - 525V/600V
Control Boxes	Rittal	JB08018.105, WM1244.250, WM1034.250
Fuse Holder	Eaton-Bussmann	T600303CR, JM60030-3CR
Power Block	Lovato	FB01G1P
	Eaton	16220-3

SPECIAL SEISMIC CERTIFICATION UUT SUMMARY SHEET



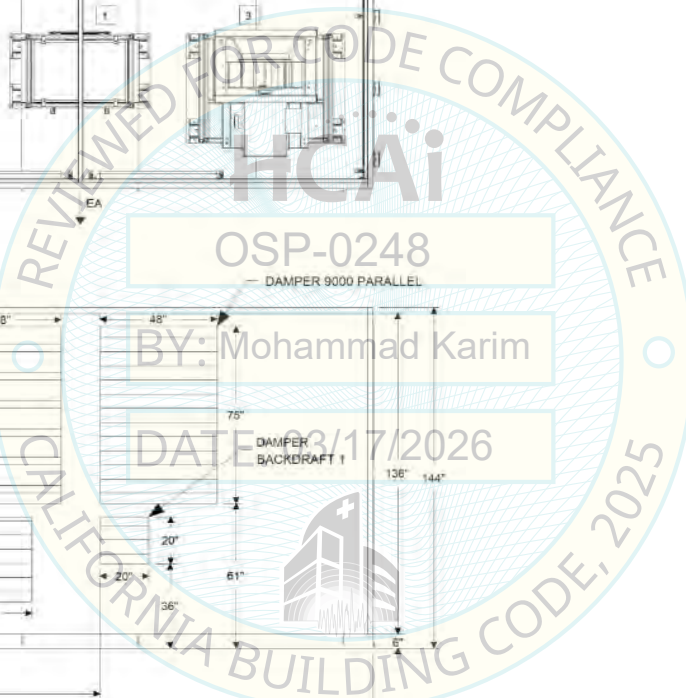
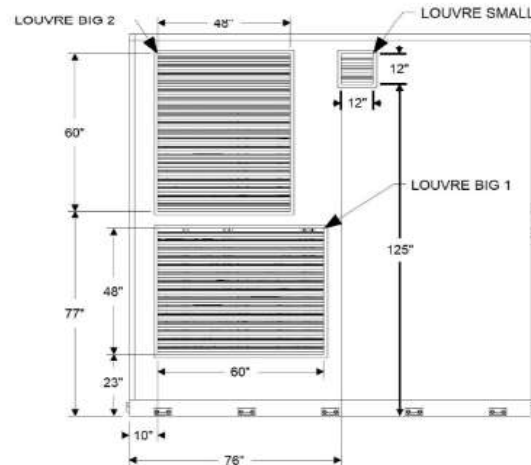
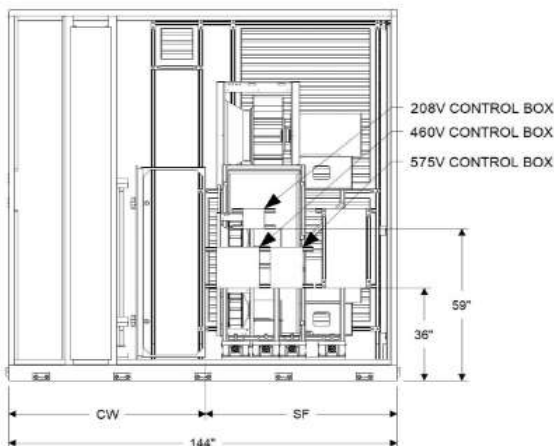
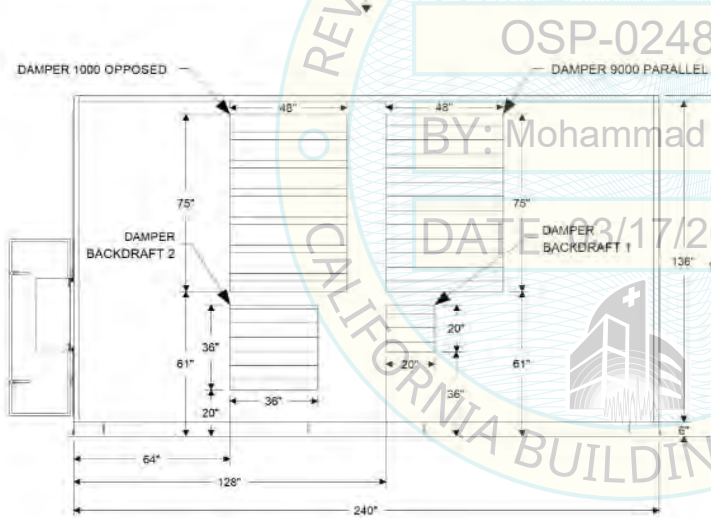
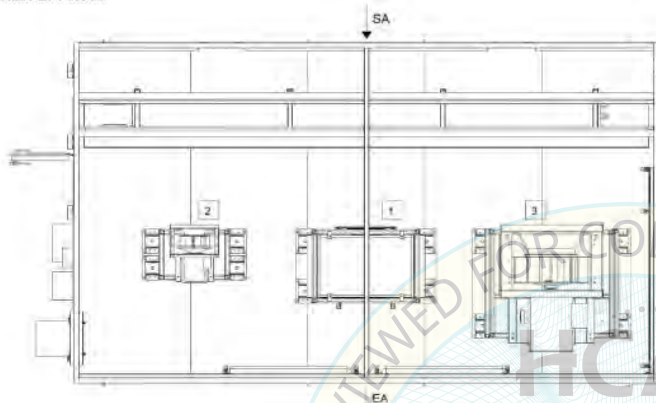
SGH PROJECT NO. 248143.00-SCOT

UUT 8a SGH: 248143-R-1

Unit Drawings:

- 1.2X ER50C-4DM.I7.1R
- 2.2X EPFN122A
- 3.2X EPFN300

Included Subcomponents (Continued)		
Comp.	Mfr.	Description
Wiring / Fuses	Eaton-Bussmann	FNQ-R-1/4, JJS10, KTK-R-1/4
	Littlefuse	JTD15



SPECIAL SEISMIC CERTIFICATION UUT SUMMARY SHEET



SGH PROJECT NO. 248143.00-SCOT

UUT 8b SGH: 248143-R-1

Manufacture Info

Manufacturer: Scott Springfield Mfg., Inc.
Model Line: Scott Springfield Custom Air Handling Units

Product Info

Model No.: N/A
Serial No.: N/A

Construction/Options Summary

8b: Remove damper wall and replace with x-bracing. Wall panels 2" thick made of 16ga Galv. carbon steel with 22ga galvanized carbon steel perforated liners and 2" Rockwool insulation. 6" base floorframing with 1/8" aluminum checker plate. Internally isolated fans.

Weight	Dimensions (in)		
15,997 lb	Depth	Width	Height
67 psf	144	240	144

Lowest Natural Frequency (Hz)		
Front-Back	Side-Side	Vertical
3.3	5.9	7.9

Building Code
CBC 2025, ASCE 7-22

Test Criteria
ICC-ES AC156-24

UUT Highest Passed Seismic Run					
S.DS	z / h	A _{FLX-H} (g)	A _{RIG-H} (g)	A _{FLX-V} (g)	A _{RIG-V} (g)
2.00	1.0	3.20	2.15	1.67	0.67
2.00	0.0				

Test Mounting Details

Rigid base mounted with (10) 5/8"-11 UNC heavy hex A325 bolts at 30" o.c. Contents were included in testing per operating conditions. Unit maintained structural integrity and remained functional per manufacturer requirement after shake table test.



Included Subcomponents

Comp.	Mfr.	Description
Stacked Water Coil Rack (Heavy Rack Design)	Heatcraft	5WS1208B - 192"x54" (3-stack, top)
		5WS0808C - 192"x49.5" (3-stack, middle)
		5WS0808A - 192"x10.5" (3-stack, bottom)
Stacked Fans + (motors)	Twin City	Fan Model: (2)EPFN122A Mounting: 1Wx2H carbon steel array
	Weg	2x(00118ET3E143T-W22S; 1HP; 230V/460V)
Dampers	Tamco	Model 1000 OB 48Wx75H
		Model 9000 PB 48Wx75H
		Model 7000 CW 20Wx20H
		Model 7000 CW 36Wx36H
Louvers	Westvent	Model 435V 12Wx12H
		Model 435V 48Wx60H
		Model 435V 60Wx48H
VFD	Danfoss	FC-102 125HP - 525V/600V
Control Boxes	Rittal	JB08018.105, WM1244.250, WM1034.250
Fuse Holder	Eaton-Bussmann	T600303CR, JM60030-3CR
	Lovato	FB01G1P
Power Block	Eaton	16220-3
Wiring / Fuses	Eaton-Bussmann	FNQ-R-1/4, JJS10, KTK-R-1/4
	Littlefuse	JTD15

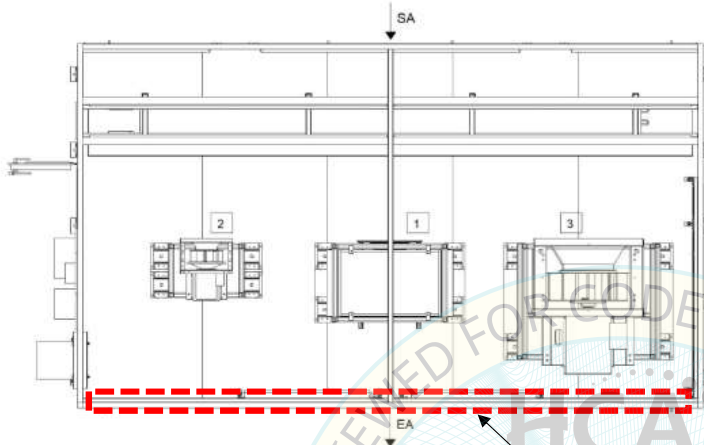
SPECIAL SEISMIC CERTIFICATION UUT SUMMARY SHEET



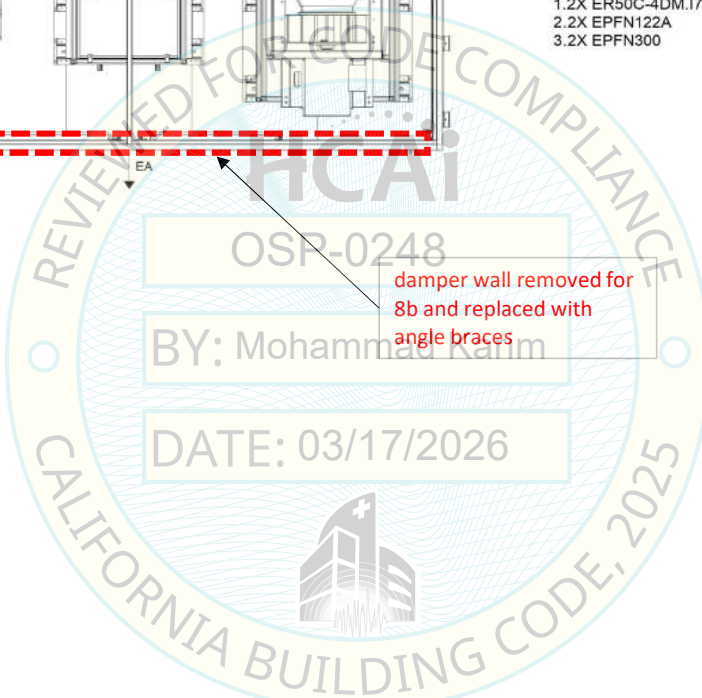
SGH PROJECT NO. 248143.00-SCOT

UUT 8b SGH: 248143-R-1

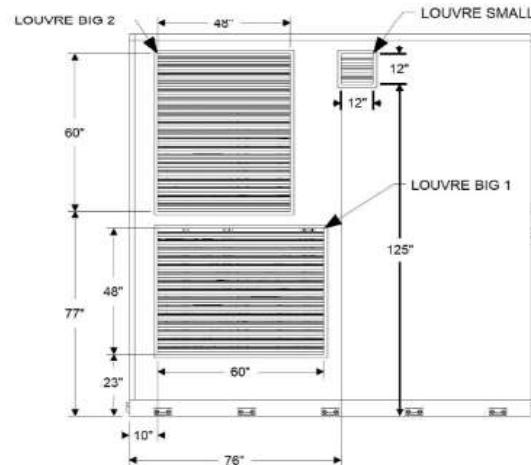
Unit Drawings:



- 1.2X ER50C-4DM.I7.1R
- 2.2X EPFN122A
- 3.2X EPFN300



damper wall removed for
8b and replaced with
angle braces



SPECIAL SEISMIC CERTIFICATION UUT SUMMARY SHEET



SGH PROJECT NO. 248143.00-SCOT

UUT 9a SGH: 248143-R-1

Manufacture Info

Manufacturer: Scott Springfield Mfg., Inc.
Model Line: Scott Springfield Custom Air Handling Units

Product Info

Model No.: N/A
Serial No.: N/A

Construction/Options Summary

9a: Test with 2 walls (sidewalls only) and bracing at inlet and outlet. Wall panels 2" thick made of 16ga Galv. carbon steel with 22ga galvanized carbon steel liners and 2" Rockwool insulation. 6" base floorframing with 1/8" aluminum checker plate. Fans mounted to fan matrix wall.

Weight	Dimensions (in)		
	Depth	Width	Height
19,200 lb	144	240	144
80 psf			

Lowest Natural Frequency (Hz)		
Front-Back	Side-Side	Vertical
7.2	7.9	10.4

Building Code
CBC 2025, ASCE 7-22

Test Criteria
ICC-ES AC156-24

UUT Highest Passed Seismic Run					
S.DS	z / h	A _{FLX-H} (g)	A _{RIG-H} (g)	A _{FLX-V} (g)	A _{RIG-V} (g)
2.00	1.0	3.20	2.15	1.67	0.67
2.00	0.0				

Test Mounting Details

Rigid base mounted with (10) 5/8"-11 UNC heavy hex A325 bolts at 30" o.c.
Contents were included in testing per operating conditions. Unit maintained structural integrity and remained functional per manufacturer requirement after shake table test.



Included Subcomponents		
Comp.	Mfr.	Description
Stagger Stacked Water Coil Rack (Heavy Rack Design)	Heatcraft	(1) 5WS0808A - 103"x54" (top left)
	Heatcraft	(1) 4WS0806A - 103"x54" (top right)
	Heatcraft	(2) 5WS0808A - 103"x49.5" (middle left, middle right)
	Heatcraft	(2) 5WS0808A - 103"x10.5" (bottom left, bottom right)
EC Fans (with integrated motors)	Rosenberg	(9) GKHM 630; 4.4 kW; 460V
	Rosenberg	(1) GKHM 280; 0.9 kW; 230V
	Ziehl-Abegg	(1) GR56; 5.2 kW; 460V
	Ziehl-Abegg	(1) GR31; 2.4 kW; 460V
	ebm-papst	(1) EG1R240355; 2.9 kW; 230V
	ebm-papst	(1) EG1R575310; 3.6 kW; 575V
	ebm-papst	(1) EG1R480630; 4.4 kW; 460V
UV Lights	UVDI	V-MAX Grid 113Wx134H (3) 48" lights, (1) 61" light; 120V / 240V
Control Boxes	Rittal	JB1018.105, WM1244.250, WM1034.250
Door Plunger	Siemens	3SE03-EB06
Fuse Holder	Eaton-Bussmann	T60200-1C, JM60200-3CR
	Lovato	FB01G1P
Power Block	Eaton	16220-3, 16370-3
Wiring / Fuses	Eaton-Bussmann	FNQ-R-25, JJS200, KTK-R-15
	Mersen	AJT200

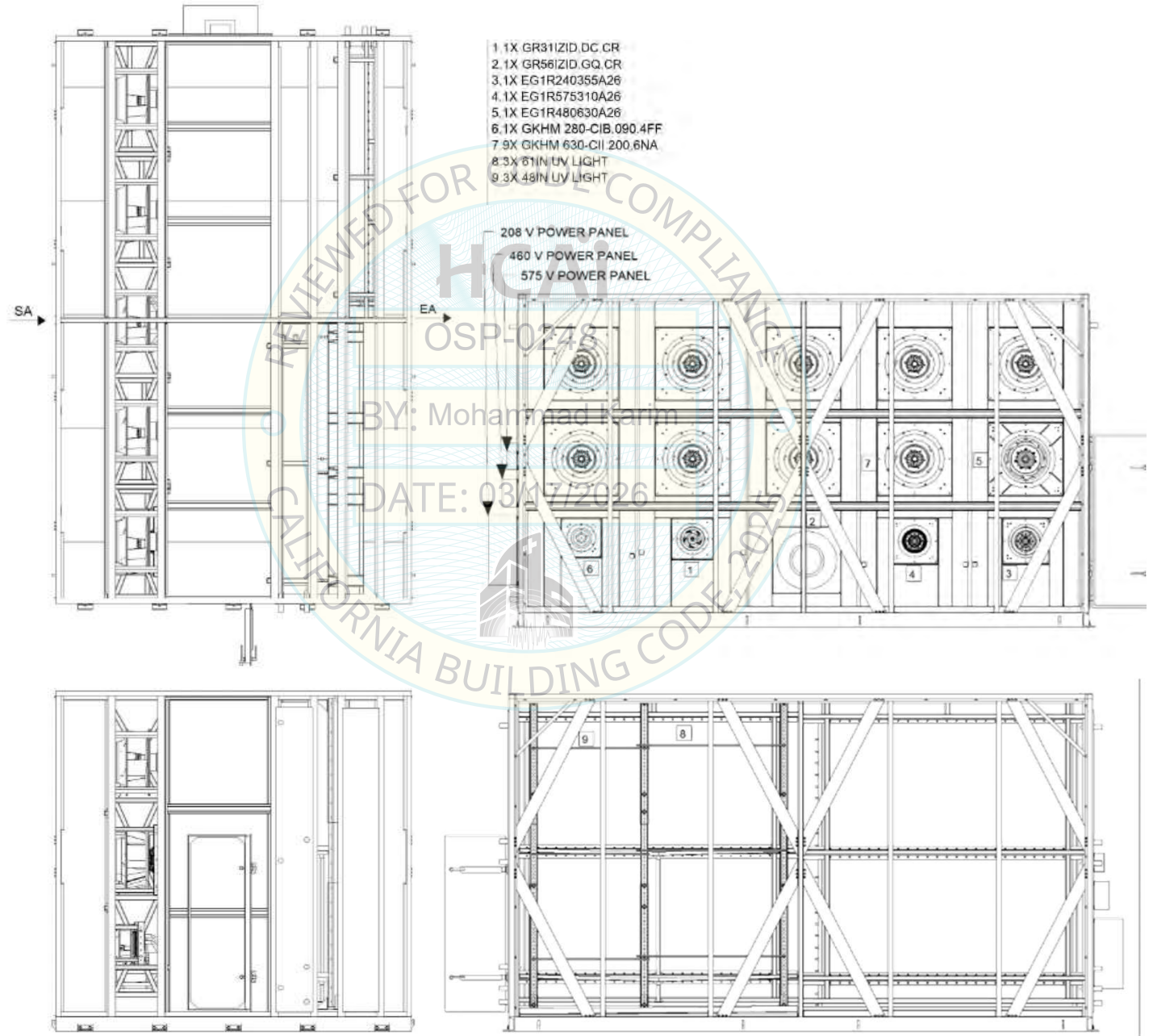
SPECIAL SEISMIC CERTIFICATION UUT SUMMARY SHEET



SGH PROJECT NO. 248143.00-SCOT

UUT 9a SGH: 248143-R-1

Unit Drawings:



SPECIAL SEISMIC CERTIFICATION UUT SUMMARY SHEET



SGH PROJECT NO. 248143.00-SCOT

UUT 9b SGH: 248143-R-1

Manufacture Info

Manufacturer: Scott Springfield Mfg., Inc.
Model Line: Scott Springfield Custom Air Handling Units

Product Info

Model No.: N/A
Serial No.: N/A

Construction/Options Summary

9b: Test with 2 walls and no bracing. Wall panels 2" thick made of 16ga Galv. carbon steel with 22ga galvanized carbon steel liners and 2" Rockwool insulation. 6" base floorframing with 1/8" aluminum checker plate. Fans mounted to fan matrix wall.

Weight	Dimensions (in)		
	Depth	Width	Height
18,176 lb	144	240	144
76 psf			

Lowest Natural Frequency (Hz)		
Front-Back	Side-Side	Vertical
5.1	6.3	8.9

Building Code
CBC 2025, ASCE 7-22

Test Criteria
ICC-ES AC156-24

UUT Highest Passed Seismic Run					
S.DS	z / h	A _{FLX-H} (g)	A _{RIG-H} (g)	A _{FLX-V} (g)	A _{RIG-V} (g)
2.00	1.0	3.20	2.15	1.67	0.67
2.00	0.0				

Test Mounting Details

Rigid base mounted with (10) 5/8"-11 UNC heavy hex A325 bolts at 30" o.c. Contents were included in testing per operating conditions. Unit maintained structural integrity and remained functional per manufacturer requirement after shake table test.



Included Subcomponents

Comp.	Mfr.	Description
Stagger Stacked Water Coil Rack (Heavy Rack Design)	Heatcraft	(1) 5WS0808A - 103"x54" (top left)
	Heatcraft	(1) 4WS0806A - 103"x54" (top right)
	Heatcraft	(2) 5WS0808A - 103"x49.5" (middle left, middle right)
	Heatcraft	(2) 5WS0808A - 103"x10.5" (bottom left, bottom right)
EC Fans (with integrated motors)	Rosenberg	(9) GKHM 630; 4.4 kW; 460V
	Rosenberg	(1) GKHM 280; 0.9 kW; 230V
	Ziehl-Abegg	(1) GR56; 5.2 kW; 460V
	Ziehl-Abegg	(1) GR31; 2.4 kW; 460V
	ebm-papst	(1) EG1R240355; 2.9 kW; 230V
	ebm-papst	(1) EG1R575310; 3.6 kW; 575V
ebm-papst	(1) EG1R480630; 4.4 kW; 460V	
UV Lights	UVDI	V-MAX Grid 113Wx134H (3) 48" lights, (1) 61" light; 120V / 240V
Control Boxes	Rittal	JB1018.105, WM1244.250, WM1034.250
Door Plunger	Siemens	3SE03-EB06
Fuse Holder	Eaton-Bussmann	T60200-1C, JM60200-3CR
	Lovato	FB01G1P
Power Block	Eaton	16220-3, 16370-3
Wiring / Fuses	Eaton-Bussmann	FNQ-R-25, JJS200, KTK-R-15
	Mersen	AJT200

SPECIAL SEISMIC CERTIFICATION UUT SUMMARY SHEET



SGH PROJECT NO. 248143.00-SCOT

UUT 9b SGH: 248143-R-1

Unit Drawings:

