



**OFFICE OF STATEWIDE HEALTH PLANNING AND DEVELOPMENT
FACILITIES DEVELOPMENT DIVISION**

**APPLICATION FOR OSHPD SPECIAL SEISMIC
CERTIFICATION PREAPPROVAL (OSP)**

OFFICE USE ONLY

APPLICATION #: OSP-0343

OSHPD Special Seismic Certification Preapproval (OSP)

Type: New Renewal

Manufacturer Information

Manufacturer: ENERVEX Inc.

Manufacturer's Technical Representative: Steen Hagensen

Mailing Address: 1685 Bluegrass Lakes Parkway, Alpharetta, GA 30004

Telephone: (770) 587-3238

Email: steen@enervex.com

Product Information

Product Name: Exhaust/Smoke Control Fans

Product Type: NA

Product Model Number: RSV Chimney Fans & IPVB Inline Power Venters (for model numbers, see attached)

General Description: Rigid floor mounted RSV chimney fans, ceiling suspended IPVB inline power venters, and rigid wall mounted controls.

Mounting Description: Rigid floor (RSV), ceiling suspended (IPVB), and rigid wall (controls), See Certified Product Tables

Tested Seismic Enhancements: Seismic enhancements made to the test units and/or modifications required to address anomalies during the tests shall be incorporated into the production units.

Applicant Information

Applicant Company Name: Manwill Engineering LLC

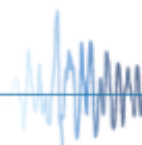
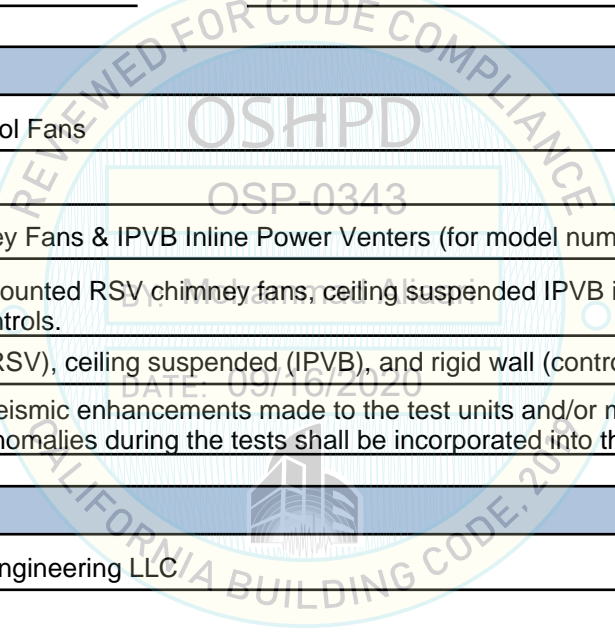
Contact Person: Derek Manwill

Mailing Address: PO Box 1194, Bend, OR 97709

Telephone: (541) 241-2102

Email: derek@manwillSE.com

Title: President





**OFFICE OF STATEWIDE HEALTH PLANNING AND DEVELOPMENT
FACILITIES DEVELOPMENT DIVISION**

California Licensed Structural Engineer Responsible for the Engineering and Test Report(s)

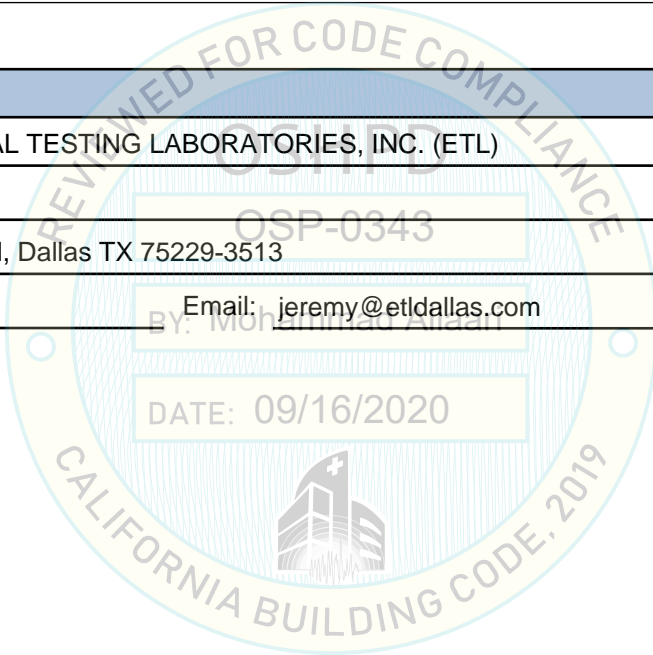
Company Name: MANWILL ENGINEERING LLC
Name: Derek Manwill California License Number: S6266
Mailing Address: PO Box 1194, Bend, OR 97709
Telephone: (541) 241-2102 Email: derek@manwillse.com

Certification Method

GR-63-Core ICC-ES AC156 IEEE 344 IEEE 693 NEBS 3
 Other (Please Specify): _____

Testing Laboratory

Company Name: ENVIRONMENTAL TESTING LABORATORIES, INC. (ETL)
Contact Person: Jeremy Lange
Mailing Address: 11034 Indian Trail, Dallas TX 75229-3513
Telephone: (972) 247-9657 Email: jeremy@etldallas.com





**OFFICE OF STATEWIDE HEALTH PLANNING AND DEVELOPMENT
FACILITIES DEVELOPMENT DIVISION**

Seismic Parameters

Design Basis of Equipment or Components (F_p/W_p) = 1.88

SDS (Design spectral response acceleration at short period, g) = 2.50

a_p (Amplification factor) = 2.5

R_p (Response modification factor) = 6.0

Ω_0 (System overstrength factor) = 2.0

I_p (Importance factor) = 1.5

z/h (Height ratio factor) = 1

Natural frequencies (Hz) = See Attachment 2

Overall dimensions and weight = See Attachments 1 & 2

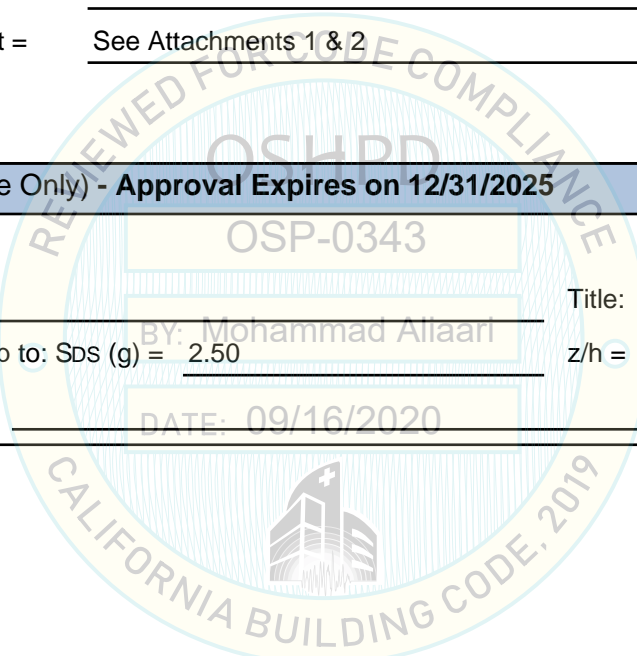
OSHPD Approval (For Office Use Only) - Approval Expires on 12/31/2025

Date: 9/16/2020

Name: Mohammad Aliaari Title: Senior Structural Engineer

Special Seismic Certification Valid Up to: SDS (g) = 2.50 z/h = 1

Condition of Approval (if applicable): DATE: 09/16/2020



ATTACHMENT 1: CERTIFIED COMPONENTS

SPECIAL SEISMIC CERTIFICATION

TABLE 1 - FLOOR MOUNTED

DOCUMENT NO.: 20011CR1.1

| MANUFACTURER: ENERVEX INC. (formerly EXHAUSTO) | | | | | | |
|--|---|-------|--------|-----------------------|---|--------|
| PRODUCT FAMILY: CHIMNEY FANS & POWER VENTERS | | | | | | |
| MODEL NUMBER | DIMENSIONS (in) | | | MAX. WT. (lb) | DESCRIPTION / NOTES | BASIS |
| | DEPTH | WIDTH | HEIGHT | | | |
| RSV Chimney Fan | | | | | | |
| RSV 160 | 12.2 | 12.2 | 9.9 | 28 | | EXTRAP |
| RSV 200 | 15.4 | 15.4 | 11.0 | 47 | | UUT 1 |
| RSV 250 | 19.1 | 19.1 | 13.2 | 60 | | INTERP |
| RSV 315 | 22.9 | 22.9 | 15.0 | 88 | | INTERP |
| RSV 400 | 25.6 | 25.6 | 16.9 | 127 | | INTERP |
| RSV 450 | 25.6 | 25.6 | 23.2 | 155 | | UUT 2 |
| MOUNTING: | Rigid floor mounted. | | | SEISMIC LEVEL: | S _{DS} = 2.50g for z/h = 1 I _p = 1.5 | |
| NOTES: | Building Code: 2019 California Building Code Product Construction: Cast aluminum housing. Backwards curved cast aluminum impeller. Options/Subcomponents: 120V-480V. Available motors and impellers are listed in Table 4. | | | | | |

TABLE 2 - CEILING SUSPENDED

| MANUFACTURER: ENERVEX INC. (formerly EXHAUSTO) | | | | | | |
|--|---|-------|--------|-----------------------|---|--------|
| PRODUCT FAMILY: CHIMNEY FANS & POWER VENTERS | | | | | | |
| MODEL NUMBER | DIMENSIONS (in) | | | MAX. WT. (lb) | DESCRIPTION / NOTES | BASIS |
| | DEPTH | WIDTH | HEIGHT | | | |
| IPVB Inline Power Venter | | | | | | |
| IPVB300 | 47.1 | 22.2 | 21.6 | 109 | | UUT 3 |
| IPVB350 | 51.2 | 25.3 | 24.6 | 118 | | INTERP |
| IPVB400 | 56.8 | 29.2 | 26.3 | 160 | | INTERP |
| IPVB500 | 66.9 | 32.4 | 30.0 | 224 | | UUT 4 |
| MOUNTING: | Ceiling suspended. | | | SEISMIC LEVEL: | S _{DS} = 2.50g for z/h = 1 I _p = 1.5 | |
| NOTES: | Building Code: 2019 California Building Code Product Construction: Stainless steel housing. Backwards inclined cast aluminum impeller. Options/Subcomponents: 120V-480V. Available motors and impellers are listed in Table 5. | | | | | |

TABLE 3 - WALL MOUNTED

| MANUFACTURER: ENERVEX INC. (formerly EXHAUSTO) | | | | | | |
|--|--|-------|--------|-----------------------|---|----------|
| PRODUCT FAMILY: CHIMNEY FANS & POWER VENTERS | | | | | | |
| MODEL NUMBER | DIMENSIONS (in) | | | MAX. WT. (lb) | DESCRIPTION / NOTES | BASIS |
| | DEPTH | WIDTH | HEIGHT | | | |
| Modulating Pressure Control | | | | | | |
| EBC 30 | 4.2 | 14.7 | 11.0 | 9 | NEMA 1 carbon steel | UUT 5,6 |
| Differential Pressure Sensor | | | | | | |
| XTP2 | 3.1 | 3.7 | 6.2 | 0.6 | NEMA 4X polystyrene | UUT 7,8 |
| Relay Box | | | | | | |
| ES 12 | 3.0 | 6.9 | 5.6 | 1.6 | NEMA 12 plastic | UUT 9,10 |
| MOUNTING: | Rigid wall mounted. | | | SEISMIC LEVEL: | S _{DS} = 2.50g for z/h = 1 I _p = 1.5 | |
| NOTES: | Building Code: 2019 California Building Code Construction/Options: Model number uniquely identifies construction, materials, and subcomponents. | | | | | |

ATTACHMENT 1: CERTIFIED SUBCOMPONENTS

SPECIAL SEISMIC CERTIFICATION

TABLE 4 - SUBCOMPONENTS

DOCUMENT NO.: 20011CR1.1

| MANUFACTURER: ENERVEX INC. (formerly EXHAUSTO) | | | | | | |
|---|---|-------|--------|------------------------|--------------------------------|-------------|
| PRODUCT FAMILY: CHIMNEY FANS & POWER VENTERS | | | | | | |
| MODEL NUMBER | DIMENSIONS (in) | | | MAX. WT. (lb) | DESCRIPTION / NOTES | BASIS |
| | DEPTH | WIDTH | HEIGHT | | | |
| Exodraft - Motor | | | | | | |
| 0.15HP | | | | 14 | 120V, 1-phase | UUT 1 |
| ABB - Motor | | | | | | |
| 2HP | | | | 38 | 240/480V, 3-phase | UUT 2 |
| ENERVEX Inc. - Backwards Curved Impeller (cast aluminum) | | | | | | |
| 160 | 6.3 | 6.3 | | 3 | | INTERP |
| 200 | 7.9 | 7.9 | | 5 | | UUT 1 |
| 250 | 9.8 | 9.8 | | 8 | | INTERP |
| 315 | 12.4 | 12.4 | | 11 | | INTERP |
| 400 | 15.7 | 15.7 | | 14 | | INTERP |
| 450 | 17.7 | 17.7 | | 16 | | UUT 2 |
| MOUNTING: | Mounted within rigid floor mounted unit. | | | SEISMIC LEVELS: | $S_{DS} = 2.50g$ for $z/h = 1$ | $I_p = 1.5$ |
| NOTES: | Building Code: 2019 California Building Code Construction/Options: Model number uniquely identifies manufacturer, materials, and configuration of subcomponents. | | | | | |

TABLE 5 - SUBCOMPONENTS

| MANUFACTURER: ENERVEX INC. (formerly EXHAUSTO) | | | | | | |
|---|---|-------|--------|------------------------|--------------------------------|-------------|
| PRODUCT FAMILY: CHIMNEY FANS & POWER VENTERS | | | | | | |
| MODEL NUMBER | DIMENSIONS (in) | | | MAX. WT. (lb) | DESCRIPTION / NOTES | BASIS |
| | DEPTH | WIDTH | HEIGHT | | | |
| Exodraft - Motor | | | | | | |
| 0.5HP | | | | 22 | 120V, 1-phase | UUT 3 |
| ABB - Motor | | | | | | |
| 3HP | | | | 53 | 240/480V, 3-phase | UUT 4 |
| ENERVEX Inc. - Backwards Inclined Impeller (cast aluminum) | | | | | | |
| 300 | | 11.8 | 11.8 | 9 | | UUT 3 |
| 350 | | 13.8 | 13.8 | 13 | | INTERP |
| 400 | | 15.7 | 15.7 | 17 | | INTERP |
| 500 | | 19.7 | 19.7 | 23 | | UUT 4 |
| MOUNTING: | Mounted within ceiling suspended unit. | | | SEISMIC LEVELS: | $S_{DS} = 2.50g$ for $z/h = 1$ | $I_p = 1.5$ |
| NOTES: | Building Code: 2019 California Building Code Construction/Options: Model number uniquely identifies manufacturer, materials, and configuration of subcomponents. | | | | | |

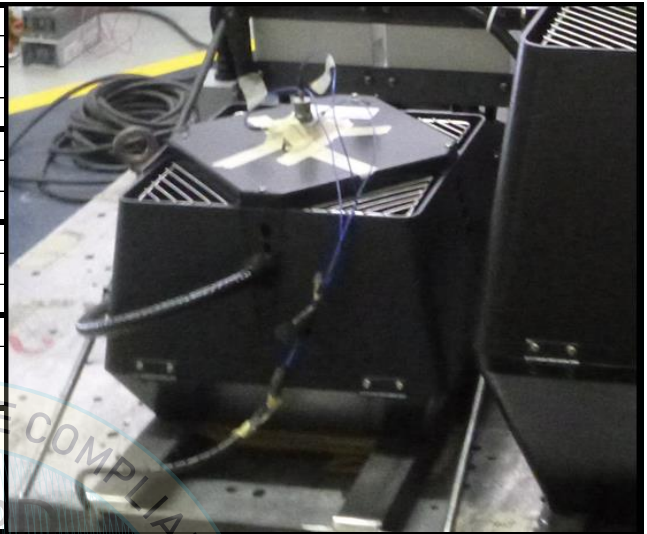
ATTACHMENT 2: UNIT UNDER TEST SUMMARIES

SPECIAL SEISMIC CERTIFICATION

UUT 1

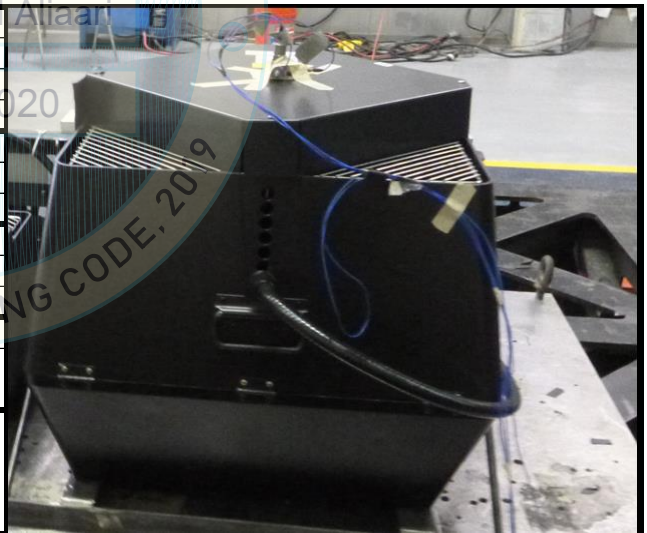
DOCUMENT NO.: 20011CR1.1

| MANUFACTURER: | | ENERVEX INC. (formerly EXHAUSTO) | | | | |
|---|-------|---|------------------------|------------------------|------------------------|------|
| MODEL NUMBER: | | RSV 200 | | | | |
| UNIT FUNCTION: | | CHIMNEY FAN | | | | |
| SERIAL NUMBER: | | N/A | | | | |
| DIMENSIONS (in) | | | WEIGHT (lb) | RES. FREQ. (Hz) | | |
| DEPTH | WIDTH | HEIGHT | | F-B | S-S | V |
| 15.4 | 15.4 | 11.0 | 47 | >33 | >33 | 15.4 |
| CODE & CRITERIA: | | 2019 CBC | | ICC-ES AC156 | | |
| TEST LABORATORY: | | ENVIRONMENTAL TESTING LABORATORY | | | | |
| REPORT & DATE: | | 12706 | | May 13, 2013 | | |
| S _{DS} (g) | z/h | A _{FLX-H} (g) | A _{RIG-H} (g) | A _{FLX-V} (g) | A _{RIG-V} (g) | |
| 2.5 | 1 | 4.00 | 3.00 | 1.68 | 0.68 | |
| IMPORTANCE FACTOR, I_p = 1.5 | | | | | | |
| Unit was full of operating content during the shake table test. Unit maintained structural integrity and remained functional per manufacturer requirement after shake table test. | | | | | | |
| MOUNTING: | | Rigid floor mounted using (4) #10 Grade 8 bolts. | | | | |
| CONSTRUCTION: | | Cast aluminum housing. Backwards curved cast aluminum impeller. | | | | |
| SUBCOMPONENTS: | | Exodraft - motor (0.15HP), ENERVEX Inc. - impeller (200). | | | | |



UUT 2

| MANUFACTURER: | | ENERVEX INC. (formerly EXHAUSTO) | | | | |
|---|-------|---|------------------------|------------------------|------------------------|------|
| MODEL NUMBER: | | RSV 450 | | | | |
| UNIT FUNCTION: | | CHIMNEY FAN | | | | |
| SERIAL NUMBER: | | N/A | | | | |
| DIMENSIONS (in) | | | WEIGHT (lb) | RES. FREQ. (Hz) | | |
| DEPTH | WIDTH | HEIGHT | | F-B | S-S | V |
| 25.6 | 25.6 | 23.2 | 155 | 24.0 | 18.8 | 18.6 |
| CODE & CRITERIA: | | 2019 CBC | | ICC-ES AC156 | | |
| TEST LABORATORY: | | ENVIRONMENTAL TESTING LABORATORY | | | | |
| REPORT & DATE: | | 12706 | | May 13, 2013 | | |
| S _{DS} (g) | z/h | A _{FLX-H} (g) | A _{RIG-H} (g) | A _{FLX-V} (g) | A _{RIG-V} (g) | |
| 2.5 | 1 | 4.00 | 3.00 | 1.68 | 0.68 | |
| IMPORTANCE FACTOR, I_p = 1.5 | | | | | | |
| Unit was full of operating content during the shake table test. Unit maintained structural integrity and remained functional per manufacturer requirement after shake table test. | | | | | | |
| MOUNTING: | | Rigid floor mounted using (4) #10 Grade 8 bolts. | | | | |
| CONSTRUCTION: | | Cast aluminum housing. Backwards curved cast aluminum impeller. | | | | |
| SUBCOMPONENTS: | | ABB - motor (2HP), ENERVEX Inc. - impeller (450). | | | | |



ATTACHMENT 2: UNIT UNDER TEST SUMMARIES

SPECIAL SEISMIC CERTIFICATION

UUT 3

DOCUMENT NO.: 20011CR1.1

| | |
|-----------------------|----------------------------------|
| MANUFACTURER: | ENERVEX INC. (formerly EXHAUSTO) |
| MODEL NUMBER: | IPVB300 |
| UNIT FUNCTION: | INLINE POWER VENTER |
| SERIAL NUMBER: | N/A |

| DIMENSIONS (in) | | | WEIGHT (lb) | RES. FREQ. (Hz) | | |
|-----------------|-------|--------|----------------|-----------------|-----|-----|
| DEPTH | WIDTH | HEIGHT | | F-B | S-S | V |
| 47.1 | 22.2 | 21.6 | 109 | N/A | N/A | N/A |

| | | |
|-----------------------------|----------|--------------|
| CODE & CRITERIA: | 2019 CBC | ICC-ES AC156 |
|-----------------------------|----------|--------------|

| | |
|-------------------------|----------------------------------|
| TEST LABORATORY: | ENVIRONMENTAL TESTING LABORATORY |
|-------------------------|----------------------------------|

| | | |
|---------------------------|-------|--------------|
| REPORT & DATE: | 12706 | May 14, 2013 |
|---------------------------|-------|--------------|

| S _{DS} (g) | z/h | A _{FLX-H} (g) | A _{RIG-H} (g) | A _{FLX-V} (g) | A _{RIG-V} (g) |
|---------------------|-----|------------------------|------------------------|------------------------|------------------------|
| 2.5 | 1 | 4.00 | 3.00 | 1.68 | 0.68 |

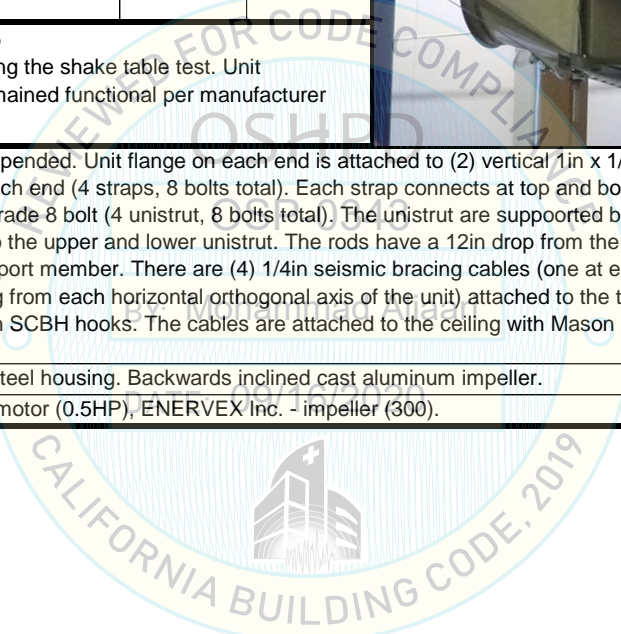
IMPORTANCE FACTOR, I_p = 1.5
 Unit was full of operating content during the shake table test. Unit maintained structural integrity and remained functional per manufacturer requirement after shake table test.



MOUNTING: Ceiling suspended. Unit flange on each end is attached to (2) vertical 1 in x 1/8 in steel straps with (4) 3/8 in Grade 8 bolts on each end (4 straps, 8 bolts total). Each strap connects at top and bottom to horizontal P1000 Unistrut with (1) 3/8 in Grade 8 bolt (4 unistrut, 8 bolts total). The unistrut are supported by (4) 1/2 in A36 threaded rods directly attached to the upper and lower unistrut. The rods have a 12 in drop from the ceiling and are directly attached to the ceiling support member. There are (4) 1/4 in seismic bracing cables (one at each corner angled 45-deg from vertical and 45-deg from each horizontal orthogonal axis of the unit) attached to the threaded rod below the lower unistrut with Mason SCBH hooks. The cables are attached to the ceiling with Mason SCBH hooks and 1/2 in Grade 8 bolts.

CONSTRUCTION: Stainless steel housing. Backwards inclined cast aluminum impeller.

SUBCOMPONENTS: Exodraft - motor (0.5HP), ENERVEX Inc. - impeller (300).



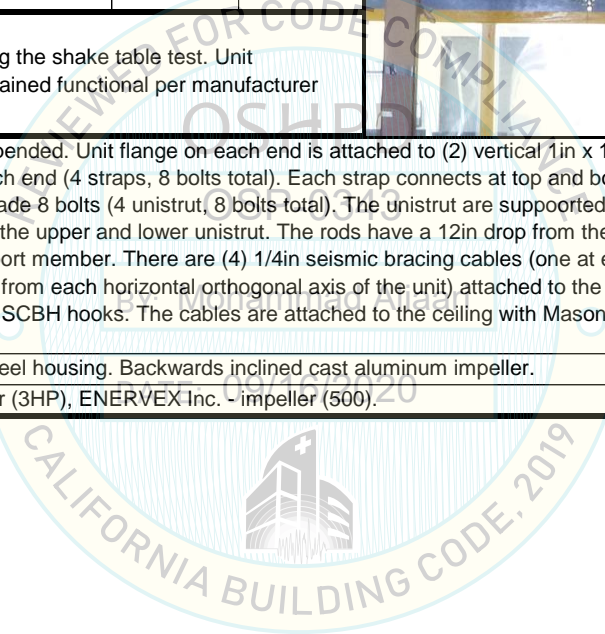
ATTACHMENT 2: UNIT UNDER TEST SUMMARIES

SPECIAL SEISMIC CERTIFICATION

UUT 4

DOCUMENT NO.: 20011CR1.1

| | | | | | | |
|---|--------------|---|------------------------------|------------------------------|------------------------------|----------|
| MANUFACTURER: | | ENERVEX INC. (formerly EXHAUSTO) | | | | |
| MODEL NUMBER: | | IPVB500 | | | | |
| UNIT FUNCTION: | | INLINE POWER VENTER | | | | |
| SERIAL NUMBER: | | N/A | | | | |
| DIMENSIONS (in) | | | WEIGHT (lb) | RES. FREQ. (Hz) | | |
| DEPTH | WIDTH | HEIGHT | | F-B | S-S | V |
| 66.9 | 32.4 | 30.0 | 224 | N/A | N/A | N/A |
| CODE & CRITERIA: | | 2019 CBC | | ICC-ES AC156 | | |
| TEST LABORATORY: | | ENVIRONMENTAL TESTING LABORATORY | | | | |
| REPORT & DATE: | | 12706 | | May 14, 2013 | | |
| S_{Ds} (g) | z/h | A_{FLX-H} (g) | A_{RIG-H} (g) | A_{FLX-V} (g) | A_{RIG-V} (g) | |
| 2.5 | 1 | 4.00 | 3.00 | 1.68 | 0.68 | |
| IMPORTANCE FACTOR, I_p = 1.5 | | | | | | |
| Unit was full of operating content during the shake table test. Unit maintained structural integrity and remained functional per manufacturer requirement after shake table test. | | | | | | |
| MOUNTING: | | Ceiling suspended. Unit flange on each end is attached to (2) vertical 1 in x 1/8in steel straps with (4) 3/8in Grade 8 bolts on each end (4 straps, 8 bolts total). Each strap connects at top and bottom to horizontal P1000 Unistrut with (1) 3/8in Grade 8 bolts (4 unistrut, 8 bolts total). The unistrut are supported by (4) 1/2in A36 threaded rods directly attached to the upper and lower unistrut. The rods have a 12in drop from the ceiling and are directly attached to the ceiling support member. There are (4) 1/4in seismic bracing cables (one at each corner angled 45-deg from vertical and 45-deg from each horizontal orthogonal axis of the unit) attached to the threaded rod below the lower unistrut with Mason SCBH hooks. The cables are attached to the ceiling with Mason SCBH hooks and 1/2in Grade 8 bolts. | | | | |
| CONSTRUCTION: | | Stainless steel housing. Backwards inclined cast aluminum impeller. | | | | |
| SUBCOMPONENTS: | | ABB - motor (3HP), ENERVEX Inc. - impeller (500). | | | | |



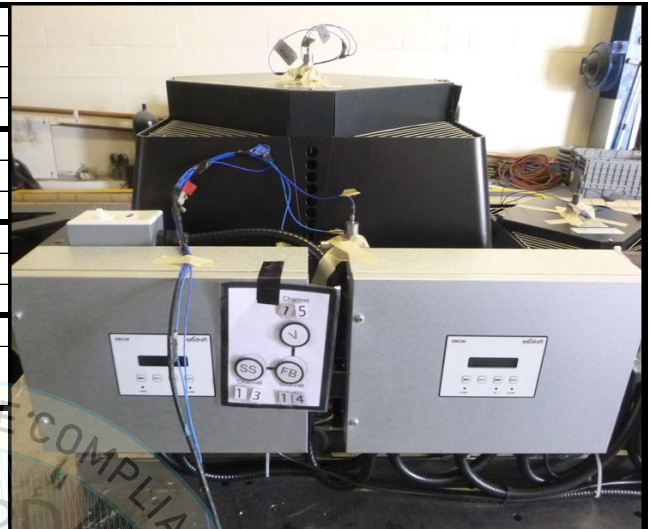
ATTACHMENT 2: UNIT UNDER TEST SUMMARIES

SPECIAL SEISMIC CERTIFICATION

UUT 5 & UUT 6

DOCUMENT NO.: 20011CR1.1

| MANUFACTURER: | | ENERVEX INC. (formerly EXHAUSTO) | | | | |
|---|-------|---|------------------------|------------------------|------------------------|-----|
| MODEL NUMBER: | | EBC 30 | | | | |
| UNIT FUNCTION: | | MODULATING PRESSURE CONTROL | | | | |
| SERIAL NUMBER: | | N/A | | | | |
| DIMENSIONS (in) | | | WEIGHT (lb) | RES. FREQ. (Hz) | | |
| DEPTH | WIDTH | HEIGHT | | F-B | S-S | V |
| 4.2 | 14.7 | 11.0 | 9 | N/A | N/A | N/A |
| CODE & CRITERIA: | | 2019 CBC | | ICC-ES AC156 | | |
| TEST LABORATORY: | | ENVIRONMENTAL TESTING LABORATORY | | | | |
| REPORT & DATE: | | 12706 | | May 13, 2013 | | |
| S _{DS} (g) | z/h | A _{FLX-H} (g) | A _{RIG-H} (g) | A _{FLX-V} (g) | A _{RIG-V} (g) | |
| 2.5 | 1 | 4.00 | 3.00 | 1.68 | 0.68 | |
| IMPORTANCE FACTOR, I_p = 1.5 | | | | | | |
| Unit was full of operating content during the shake table test. Unit maintained structural integrity and remained functional per manufacturer requirement after shake table test. | | | | | | |
| MOUNTING: | | Rigid wall mounted using (4) #10 Grade 8 bolts. | | | | |
| CONSTRUCTION: | | NEMA 1 carbon steel enclosure. | | | | |
| SUBCOMPONENTS: | | Uniquely identified by model number. | | | | |
| TESTING NOTES: | | UUT 5 and UUT 6 are identical. | | | | |



UUT 7 & UUT 8

BY: Mohammad Aliaari

| MANUFACTURER: | | ENERVEX INC. (formerly EXHAUSTO) | | | | |
|---|-------|--|------------------------|------------------------|------------------------|-----|
| MODEL NUMBER: | | XTP2 | | | | |
| UNIT FUNCTION: | | DIFFERENTIAL PRESSURE SENSOR | | | | |
| SERIAL NUMBER: | | N/A | | | | |
| DIMENSIONS (in) | | | WEIGHT (lb) | RES. FREQ. (Hz) | | |
| DEPTH | WIDTH | HEIGHT | | F-B | S-S | V |
| 3.1 | 3.7 | 6.2 | 0.6 | N/A | N/A | N/A |
| CODE & CRITERIA: | | 2019 CBC | | ICC-ES AC156 | | |
| TEST LABORATORY: | | ENVIRONMENTAL TESTING LABORATORY | | | | |
| REPORT & DATE: | | 12706 | | May 13, 2013 | | |
| S _{DS} (g) | z/h | A _{FLX-H} (g) | A _{RIG-H} (g) | A _{FLX-V} (g) | A _{RIG-V} (g) | |
| 2.5 | 1 | 4.00 | 3.00 | 1.68 | 0.68 | |
| IMPORTANCE FACTOR, I_p = 1.5 | | | | | | |
| Unit was full of operating content during the shake table test. Unit maintained structural integrity and remained functional per manufacturer requirement after shake table test. | | | | | | |
| MOUNTING: | | Rigid wall mounted using (4) #8 Grade 8 bolts. | | | | |
| CONSTRUCTION: | | NEMA 4X polystyrene enclosure. | | | | |
| SUBCOMPONENTS: | | Uniquely identified by model number. | | | | |
| TESTING NOTES: | | UUT 7 and UUT 8 are identical. | | | | |



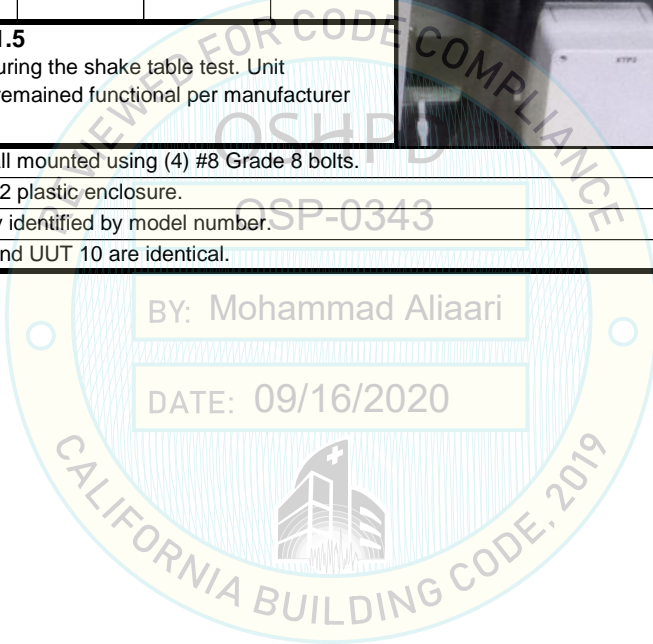
ATTACHMENT 2: UNIT UNDER TEST SUMMARIES

SPECIAL SEISMIC CERTIFICATION

UUT 9 & UUT 10

DOCUMENT NO.: 20011CR1.1

| | | | | | | |
|---|--------------|--|------------------------------|------------------------------|------------------------------|----------|
| MANUFACTURER: | | ENERVEX INC. (formerly EXHAUSTO) | | | | |
| MODEL NUMBER: | | ES 12 | | | | |
| UNIT FUNCTION: | | RELAY BOX | | | | |
| SERIAL NUMBER: | | N/A | | | | |
| DIMENSIONS (in) | | | WEIGHT (lb) | RES. FREQ. (Hz) | | |
| DEPTH | WIDTH | HEIGHT | | F-B | S-S | V |
| 3.0 | 6.9 | 5.6 | 1.6 | N/A | N/A | N/A |
| CODE & CRITERIA: | | 2019 CBC | | ICC-ES AC156 | | |
| TEST LABORATORY: | | ENVIRONMENTAL TESTING LABORATORY | | | | |
| REPORT & DATE: | | 12706 | | May 13, 2013 | | |
| S_{DS} (g) | z/h | A_{FLX-H} (g) | A_{RIG-H} (g) | A_{FLX-V} (g) | A_{RIG-V} (g) | |
| 2.5 | 1 | 4.00 | 3.00 | 1.68 | 0.68 | |
| IMPORTANCE FACTOR, I_p = 1.5 | | | | | | |
| Unit was full of operating content during the shake table test. Unit maintained structural integrity and remained functional per manufacturer requirement after shake table test. | | | | | | |
| MOUNTING: | | Rigid wall mounted using (4) #8 Grade 8 bolts. | | | | |
| CONSTRUCTION: | | NEMA 12 plastic enclosure. | | | | |
| SUBCOMPONENTS: | | Uniquely identified by model number. | | | | |
| TESTING NOTES: | | UUT 9 and UUT 10 are identical. | | | | |



BY: Mohammad Aliaari

DATE: 09/16/2020