



**DEPARTMENT OF HEALTH CARE ACCESS AND INFORMATION  
FACILITIES DEVELOPMENT DIVISION**

**APPLICATION FOR HCAI SPECIAL SEISMIC  
CERTIFICATION PREAPPROVAL (OSP)**

OFFICE USE ONLY

**APPLICATION #: OSP-0432**

**HCAI Special Seismic Certification Preapproval (OSP)**

Type:  New  Renewal

**Manufacturer Information**

Manufacturer: SIEMENS MEDICAL SOLUTIONS USA

Manufacturer's Technical Representative: Michael Zochowski

Mailing Address: 40 Liberty Parkway, Malvern, PA 19355

Telephone: (847) 304-7700

Email: michael.zochowski@siemens-healthineers.com

**Product Information**

Product Name: CT Systems

Product Type: NA

Product Model Number: See Attachment 1, Table 1

General Description: Multiple component systems for the provision of SPECT & Computed Tomography medical diagnostic imaging.

Mounting Description: See Attachment 1, Table 1

Tested Seismic Enhancements: Seismic enhancements made to the test units and/or modifications required to address anomalies during the tests shall be incorporated into the production units.

**Applicant Information**

Applicant Company Name: EASE Co.

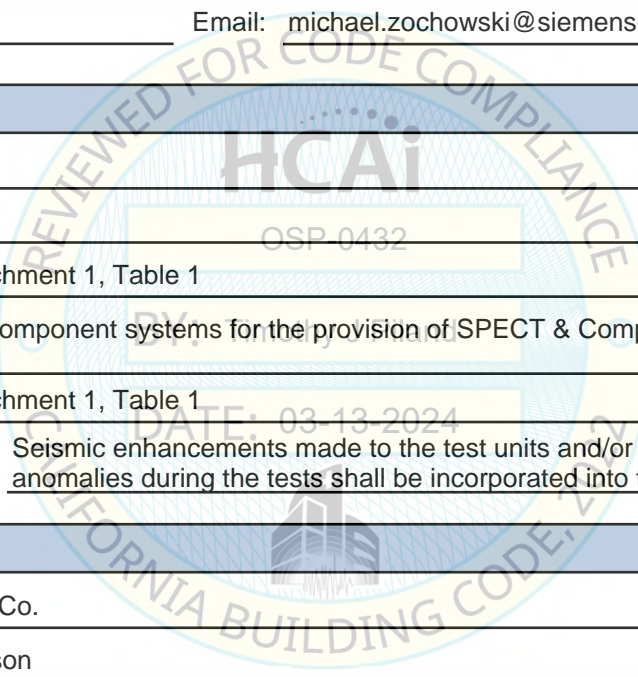
Contact Person: Jonathan Roberson

Mailing Address: 5877 Pine Ave Suite 210, Chino Hills, CA 91709

Telephone: (909) 606-7622

Email: j.roberson@easeco.com

Title: Principal Engineer





**DEPARTMENT OF HEALTH CARE ACCESS AND INFORMATION  
FACILITIES DEVELOPMENT DIVISION**

**California Licensed Structural Engineer Responsible for the Engineering and Test Report(s)**

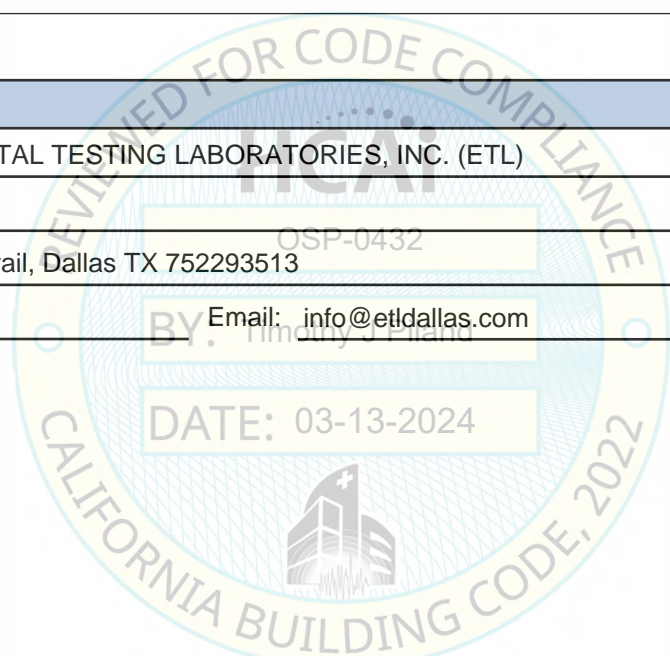
Company Name: EASE LLC  
Name: Jonathan Roberson California License Number: S4197  
Mailing Address: 5877 Pine Ave., Suite 210, Chino Hills, CA 91709  
Telephone: (951) 295-1892 Email: jon@EASECo.com

**Certification Method**

GR-63-Core       ICC-ES AC156       IEEE 344       IEEE 693       NEBS 3  
 Other (Please Specify): \_\_\_\_\_

**Testing Laboratory**

Company Name: ENVIRONMENTAL TESTING LABORATORIES, INC. (ETL)  
Contact Person: Brady Richard  
Mailing Address: 11034 Indian Trail, Dallas TX 752293513  
Telephone: (972) 247-9657 Email: info@etldallas.com



*"A healthier California where all receive equitable, affordable, and quality health care"*



**STATE OF CALIFORNIA – HEALTH AND HUMAN SERVICES AGENCY**



**DEPARTMENT OF HEALTH CARE ACCESS AND INFORMATION  
FACILITIES DEVELOPMENT DIVISION**

**Seismic Parameters**

Design Basis of Equipment or Components ( $F_p/W_p$ ) =	See Attachment 1, Table 1
SDS (Design spectral response acceleration at short period, g) =	2.00
$a_p$ (Amplification factor) =	See Attachment 1
$R_p$ (Response modification factor) =	See Attachment 1
$\Omega_0$ (System overstrength factor) =	See Attachment
$I_p$ (Importance factor) =	1.5
$z/h$ (Height ratio factor) =	1
Natural frequencies (Hz) =	See Attachment
Overall dimensions and weight =	See Attachment

<b>HCAI Approval (For Office Use Only) - Approval Expires on 03/13/2030</b>	
Date: 3/13/2024	OSP-0432
Name: Timothy Piland	Title: Senior Structural Engineer
Special Seismic Certification Valid Up to: SDS (g) = 2.00	$z/h$ = 1
Condition of Approval (if applicable):	DATE: 03-13-2024



**ATTACHMENT 1: SEISMIC CERTIFIED COMPONENTS**

**TABLE 1:**

System Manufacturer		SIEMENS MEDICAL SOLUTIONS USA												
System	Name	Part No.	Name	Part No.										
	Symbia Intevo 16 system	10764804	Symbia T16 system	10275010										
	Symbia Intevo Bold system	11007962	Symbia T6 system	10275009										
	Symbia Intevo 6 system	10764803	Symbia T2 system	10275008										
	Symbia Intevo 2 system	10764802	Symbia T system	10275007										
	Symbia Intevo Excel system	10764801												
COMPONENT	PART NO.	APPROX. DIMENSIONS (IN.)			MAX. WT. (LB.)	MOUNT	BASIS <sup>(1)</sup>	F <sub>p</sub> /W <sub>p</sub>	S <sub>DS</sub>	z/h	a <sub>p</sub>	R <sub>p</sub>	Ω <sub>0</sub>	
		W	D	H										
<b>GANTRIES</b>														
Symbia Intevo 16 Gantry including: • Symbia Intevo NM Gantry • Symbia Intevo 16 CT	10764800 10765214	92.0	53.8	80.4	8195	Floor	UUT-1	2.40	2.0	1	1	1 ½	1 ½	
Symbia Intevo Bold Gantry including: • Symbia Intevo NM Gantry • Symbia Intevo Bold CT	10764800 11218781	92.0	53.8	80.4	8195	Floor	SAME	2.40	2.0	1	1	1 ½	1 ½	
Symbia Intevo Bold Gantry including: • Symbia Intevo NM Gantry • Symbia Intevo Bold CT	10764800 11063022	92.0	53.8	80.4	8195	Floor	SAME	2.40	2.0	1	1	1 ½	1 ½	
Symbia Intevo 6 Gantry including: • Symbia Intevo NM Gantry • Symbia Intevo 6 CT	10764800 10765213	92.0	53.8	80.4	8195	Floor	SAME	2.40	2.0	1	1	1 ½	1 ½	
Symbia Intevo 6 Gantry including: • Symbia Intevo NM Gantry • Symbia Intevo 6 CT	10764800 11063020	92.0	53.8	80.4	8195	Floor	SAME	2.40	2.0	1	1	1 ½	1 ½	
Symbia Intevo Excel Gantry including: • Symbia Intevo NM Gantry • Symbia Intevo 2 CT	10764800 10415136	92.0	53.8	80.4	8195	Floor	INT	2.40	2.0	1	1	1 ½	1 ½	
Symbia Intevo Excel Gantry including: • Symbia Intevo NM Gantry • Symbia Intevo 2 CT	10764800 11063018	92.0	53.8	80.4	8195	Floor	INT	2.40	2.0	1	1	1 ½	1 ½	
Symbia Intevo 2 Gantry including: • Symbia Intevo NM Gantry • Symbia Intevo 2 CT	10764800 10415136	92.0	53.8	80.4	8195	Floor	INT	2.40	2.0	1	1	1 ½	1 ½	

Table continues next page

**ATTACHMENT 1: SEISMIC CERTIFIED COMPONENTS**

**TABLE 1:**

System Manufacturer		SIEMENS MEDICAL SOLUTIONS USA											
System	Name	Part No.	Name	Part No.									
	Symbia Intevo 16 system	10764804	Symbia T16 system	10275010									
	Symbia Intevo Bold system	11007962	Symbia T6 system	10275009									
	Symbia Intevo 6 system	10764803	Symbia T2 system	10275008									
	Symbia Intevo 2 system	10764802	Symbia T system	10275007									
	Symbia Intevo Excel system	10764801											
COMPONENT	PART NO.	APPROX. DIMENSIONS (IN.)			MAX. WT.	MOUNT	BASIS <sup>(1)</sup>	F <sub>p</sub> /W <sub>p</sub>	S <sub>DS</sub>	z/h	a <sub>p</sub>	R <sub>p</sub>	Ω <sub>0</sub>
		W	D	H	(LB.)								
Symbia Intevo 2 Gantry including: • Symbia Intevo NM Gantry • Symbia Intevo 2 CT	10764800 11063018	92.0	53.8	80.4	8195	Floor	INT	2.40	2.0	1	1	1 ½	1 ½
Symbia T16 Gantry including: • Symbia T NM Gantry • Symbia T16 CT	08719200 11062817	92.0	52.5	80.4	7715	Floor	INT	2.40	2.0	1	1	1 ½	1 ½
Symbia T6 Gantry including: • Symbia T NM Gantry • Symbia T6 CT	08719200 11062816	92.0	52.5	80.4	7715	Floor	INT	2.40	2.0	1	1	1 ½	1 ½
SYMBIA T Gantry including: • Symbia T NM Gantry • Symbia T2 CT	08719200 11062815	92.0	52.5	80.4	7715	Floor	UUT-2	2.40	2.0	1	1	1 ½	1 ½
<b>PATIENT TABLES</b>													
Symbia Intevo Front Bed including: • Automated Collimator Change (ACC) • Integrated Collimator Change (ICC) • Automated Quality Control (AQC)	11217013 10765300 11007879 07837722	32.2 28.2 28.2 19.5	105 / 199 24.3 24.3 33.3	21 / 47 4 13.3 2.4	2666 <sup>(2)</sup> 100 462 50	Floor	UUT-3	2.40	2.0	1	1	1 ½	1 ½
Symbia T Front Bed including: • Automated Collimator Change (ACC) • Integrated Collimator Change (ICC) • Automated Quality Control (AQC)	11217012 10765300 11007879 07837722	32.2 28.2 28.2 19.5	105 / 199 24.3 24.3 33.3	21 / 47 4 13.3 2.4	2666 100 462 50	Floor	SAME (as UUT-3)	2.40	2.0	1	1	1 ½	1 ½
Symbia T Front Bed including: • Automated Collimator Change (ACC) • Integrated Collimator Change (ICC) • Automated Quality Control (AQC)	11217013 10765300 11007879 07837722	32.2 28.2 28.2 19.5	97 / 181 24.3 24.3 33.3	27 / 47 4 13.3 2.4	2554 100 462 50	Floor	UUT- C1618-1	2.40	2.0	1	1	1 ½	1 ½

Table continues next page

**ATTACHMENT 1: SEISMIC CERTIFIED COMPONENTS**

**TABLE 1:**

System Manufacturer		SIEMENS MEDICAL SOLUTIONS USA												
System	Name	Part No.	Name	Part No.										
	Symbia Intevo 16 system	10764804	Symbia T16 system	10275010										
	Symbia Intevo Bold system	11007962	Symbia T6 system	10275009										
	Symbia Intevo 6 system	10764803	Symbia T2 system	10275008										
	Symbia Intevo 2 system	10764802	Symbia T system	10275007										
	Symbia Intevo Excel system	10764801												
COMPONENT	PART NO.	APPROX. DIMENSIONS (IN.)			MAX. WT. (LB.)	MOUNT	BASIS <sup>(1)</sup>	F <sub>p</sub> /W <sub>p</sub>	S <sub>DS</sub>	z/h	a <sub>p</sub>	R <sub>p</sub>	Ω <sub>0</sub>	
		W	D	H										
Rear PHS Patient Table w/	11106014	24.5	41.8	30.5 / 38.9	365	Floor	UUT-E1910-1	2.40	2.0	1	1	1 ½	1 ½	
• Siemens Nuclear Acquisition Computer (SNAC) HP RP5820	11366536	3.95	15.0	13.3										
Rear PHS Patient Table w/	11106014	24.5	41.8	30.5 / 38.9	385 <sup>(2)</sup>	Floor	UUT-4	2.40	2.0	1	1	1 ½	1 ½	
• Siemens Nuclear Acquisition Comp. (SNAC) by DTX	10609924	4	15	13.3										
Rear PHS Patient Table w/	11106014	24.5	41.8	30.5 / 8.9	385	Floor	UUT-17	2.40	2.0	1	1	1 ½	1 ½	
• Siemens Nuclear Acquisition Comp. (SNAC) by HP	10765266	4	15	13.3										
Rear PHS Patient Table w/	11106014	24.5	41.8 / 58	30.5 / 38.9	384	Floor	UUT-C1618-2	2.40	2.0	1	1	1 ½	1 ½	
• Siemens Nuclear Acquisition Computer	10609924													
Rear PHS Patient Table w/	11106014	24.5	41.8 / 58	30.5 / 38.9	365	Floor	UUT-D1729-1	2.40	2.0	1	1	1 ½	1 ½	
• Siemens Nuclear Acquisition Computer (SNAC) HP RP5810	11008000	3.95	15.0	13.3										
USER INTERFACE														
Image Control System (ICS) (Tower 10M) by Fujitsu	10498294	8.5	20.5	17.5	50	Floor	UUT-13	1.44	2.0	1	1	2 ½	2	
Image Control System (ICS) (Tower 11M) by Fujitsu	10590813	8.5	20.5	17.5	50	Floor	UUT-5	1.44	2.0	1	1	2 ½	2	
Image Control System (ICS) (Tower 12M) by Fujitsu	10864202	8.5	20.5	17.5	50	Floor	SAME	1.44	2.0	1	1	2 ½	2	
Image Control System (ICS) (Tower 13M) by Fujitsu	11062027	6.9	16.5	15.6	26	Floor	UUT-D1729-2	1.44	2.0	1	1	2 ½	2	
Image Control System (ICS) <sup>(8)</sup> (Tower 14BM) by Fujitsu	11513971	7.1	13.0	14.8	17.7	Floor	UUT-H2319-1	1.44	2.0	1	1	2 ½	2	
Image Reconstruction (IRS) (Tower 10B) by Fujitsu	10498300	8.5	20.5	17.5	47	Floor	UUT-16	1.44	2.0	1	1	2 ½	2	

Table continues next page

**ATTACHMENT 1: SEISMIC CERTIFIED COMPONENTS**

**TABLE 1:**

System Manufacturer		SIEMENS MEDICAL SOLUTIONS USA											
System	Name	Part No.	Name	Part No.									
	Symbia Intevo 16 system	10764804	Symbia T16 system	10275010									
	Symbia Intevo Bold system	11007962	Symbia T6 system	10275009									
	Symbia Intevo 6 system	10764803	Symbia T2 system	10275008									
	Symbia Intevo 2 system	10764802	Symbia T system	10275007									
	Symbia Intevo Excel system	10764801											
COMPONENT	PART NO.	APPROX. DIMENSIONS (IN.)			MAX. WT. (LB.)	MOUNT	BASIS <sup>(1)</sup>	F <sub>p</sub> /W <sub>p</sub>	S <sub>ds</sub>	z/h	a <sub>p</sub>	R <sub>p</sub>	Ω <sub>0</sub>
		W	D	H									
Image Reconstruction (IRS) (Tower 10F) by Fujitsu	10498301	8.5	20.5	17.5	47	Floor	SAME	1.44	2.0	1	1	2 ½	2
Image Reconstruction (IRS) (Tower 10G) by Fujitsu	10498302	8.5	20.5	17.5	47	Floor	UUT-6	1.44	2.0	1	1	2 ½	2
Image Reconstruction (IRS) (Tower 12B) by Fujitsu	10864211	8.5	20.5	17.5	47	Floor	SAME	1.44	2.0	1	1	2 ½	2
Image Reconstruction (IRS) (Tower 12F) by Fujitsu	10864212	8.5	20.5	17.5	47	Floor	SAME	1.44	2.0	1	1	2 ½	2
Image Reconstruction (IRS) (Tower 12G) by Fujitsu	10864213	8.5	20.5	17.5	47	Floor	SAME	1.44	2.0	1	1	2 ½	2
Image Reconstruction (IRS) (Tower 13B) by Fujitsu	11062050	6.9	16.5	15.6	24.5	Floor	UUT-D1729-3	1.44	2.0	1	1	2 ½	2
Image Reconstruction (IRS) (Tower 13F) by Fujitsu	11062051	6.9	16.5	15.6	24.5	Floor	SAME	1.44	2.0	1	1	2 ½	2
Image Reconstruction (IRS) (Tower 13G) by Fujitsu	11062052	6.9	16.5	15.6	25	Floor	UUT-D1729-4	1.44	2.0	1	1	2 ½	2
Image Reconstruction (IRS) (Tower 13P) by Fujitsu	11268053	6.9	16.5	15.6	23.5	Floor	UUT-F2006-1	1.44	2.0	1	1	2 ½	2
Image Reconstruction (IRS) G2	10928210	7	27.5	21.3	50	Floor	UUT-B1518-4	1.44 1.13	2.0 2.5	1 0	1	2 ½	2
Image Reconstruction (IRS) <sup>(8)</sup> (Tower 14B) by Fujitsu	11513973	7.1	13.0	14.8	17.4	Floor	UUT-H2319-2	1.44	2.0	1	1	2 ½	2
Image Reconstruction (IRS) <sup>(8)</sup> (Tower 14F) by Fujitsu	11513974	7.1	13.0	14.8	17.6	Floor	INT	1.44	2.0	1	1	2 ½	2
Image Reconstruction (IRS) <sup>(8)</sup> (Tower 14P) by Fujitsu	11513975	7.1	13.0	14.8	18.8	Floor	UUT-H2319-3	1.44	2.0	1	1	2 ½	2
<b>MISC.</b>													
Control Box	08598885	7.5	7.5	1.5	1.5	CTA	UUT-8	1.44	2.0	1	1	2 ½	2
19" LCD DICOM Monitor by Shenyang Torch-Bigtide Digital Technology Co.	10656056	16.5	3.8	16 / 17.5	20	CTA	UUT-9	1.44	2.0	1	1	2 ½	2

Table continues next page

**ATTACHMENT 1: SEISMIC CERTIFIED COMPONENTS**

**TABLE 1:**

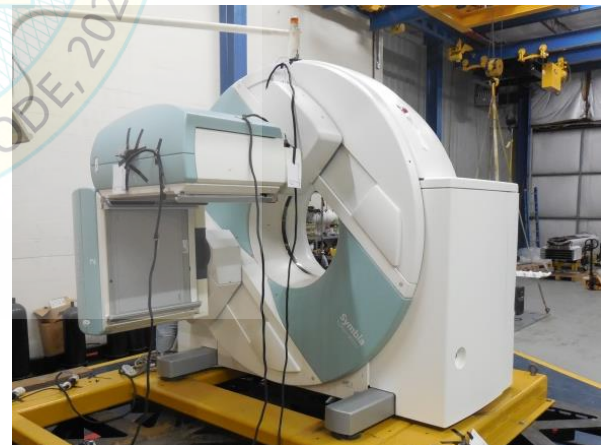
System Manufacturer		SIEMENS MEDICAL SOLUTIONS USA												
System	Name	Part No.	Name	Part No.										
	Symbia Intevo 16 system	10764804	Symbia T16 system	10275010										
	Symbia Intevo Bold system	11007962	Symbia T6 system	10275009										
	Symbia Intevo 6 system	10764803	Symbia T2 system	10275008										
	Symbia Intevo 2 system	10764802	Symbia T system	10275007										
	Symbia Intevo Excel system	10764801												
COMPONENT	PART NO.	APPROX. DIMENSIONS (IN.)			MAX. WT. (LB.)	MOUNT	BASIS <sup>(1)</sup>	F <sub>p</sub> /W <sub>p</sub>	S <sub>DS</sub>	z/h	a <sub>p</sub>	R <sub>p</sub>	Ω <sub>0</sub>	
		W	D	H										
19" LCD DICOM Monitor by Shenyang Torch-Bigtide Digital Technology Co. (DSC1914-D)	11062596	16.5	3.5 / 6 / 9	15.0 to 19.5	17	CTA	UUT-C1618-5	1.44	2.0	1	1	2 ½	2	
HP Keyboard	10266661	18	8	1	1.5	CTA	UTT-14	1.44	2.0	1	1	2 ½	2	
POWER DISTRIBUTION (PDU)														
Line Connection Box (LCB) <sup>(6)</sup>	10165884	29.5	14	31.5	245	Floor	UUT-10	1.44	2.0	1	1	2 ½	2	
Uninterruptable Power Supply (UPS) for Gantry by APC	10119031	5	28	18	124	Floor	UUT-12	1.44	2.0	1	1	2 ½	2	
Uninterruptable Power Supply (UPS) <sup>(8)</sup> by APC	11298558	5	28	17	124.8	Floor	UUT-G2124-1	1.44 1.13	2.0 2.5	1 0	1	2 ½	2	
TrippLite SMART1500SLT UPS	5245316	6.8	13.2	10.2	45	Floor	UUT-A4	1.44	2.0	1	1	2 ½	2	
EATON EX 2200 VA UPS	7735090	5.16	19.29	17.32	70.55	Floor	UUT-A5	1.44	2.0	1	1	2 ½	2	
Mount	<b>FLOOR (RIGID BASE):</b> free-standing, base mounted condition with the component rigidly attached to a supporting structure and no lateral support above the base. <b>CTA (COUNTERTOP ANCHORED)</b> unit is anchored to a counter, desk, or other piece of fixed furniture.													
Notes	<ol style="list-style-type: none"> <li>BASIS:             <ul style="list-style-type: none"> <li>UUT#: Indicates that a test specimen matching these characteristics was tested as part of this testing program.</li> <li>SAME: Model is physically, mechanically &amp; electrically the same as test specimen. Difference is limited to model number, color, software and/or Siemens manufacturing location.</li> <li>INT (Interpolate/Extrapolate): indicates a model that was not specifically tested, and by which seismic certification is established through evaluation of testing of other, similar models in the product line</li> </ul> </li> <li>Patient Bed weight includes all listed options but excludes 400 lb. simulated patient load present during testing.</li> <li>Not Used</li> <li>All components in table are manufactured by Siemens Medical Solutions USA unless otherwise noted.</li> <li>Test specimens included enhancements not found on standard production units. These enhancements are a necessary and essential condition for Seismic Qualification.</li> <li>LCB requires installation of two ¼" diameter hex washer head self-tapping, self-drilling sheet metal screws – one installed at half-height of each side of front cover.</li> <li>Certification applies to components used as part of a Siemens Medical Solutions USA project.</li> <li>Requires Siemens Seismic Restraint Kit P/N: 10432402</li> <li>Requires Siemens Seismic Mounting Kit P/N: 11367240</li> </ol>													



<b>UUT- 1</b>		<b>Symbia Intevo 16 Gantry</b>						
<b>MANUFACTURER:</b>	Siemens Medical Solutions USA							
<b>IDENTIFICATION:</b>	System	10764804						
	Symbia Intevo Gantry	10764800						
	Symbia Intevo 16 CT	10765214						
<b>DESCRIPTION:</b>	Component of Symbia Intevo 16 CT System							
<b>MOUNTING:</b>	Rigid Base (Floor) Mounted using (4) – ¾" dia Gr 8 bolts to interface frame.							
<b>PROPERTIES:</b>								
<b>DIMENSIONS (in.)</b>								
Width	Depth	Height	Weight (lb.)					
92	53.8	80.4	8195					
<b>LOWEST RESONANT FREQUENCY (Hz.)</b>								
Front-Axis	Side-Axis	Vert-Axis						
5.7	3.9	9.6						
<b>SHAKE TABLE TEST PARAMETERS</b>								
	TEST CRITERIA	S <sub>DS</sub> (G)	z/h	I <sub>p</sub>	A <sub>FLX-H</sub> (G)	A <sub>RIG-H</sub> (G)	A <sub>FLX-V</sub> (G)	A <sub>RIG-V</sub> (G)
	ICC-ES AC156	2.0	1.0	1.5	3.20	2.40	1.34	0.54
Unit maintained structural integrity and remained functional per manufacturer requirement								



<b>UUT- 2</b>		<b>Symbia T Gantry</b>						
<b>MANUFACTURER:</b>	Siemens Medical Solutions USA							
<b>IDENTIFICATION:</b>	System	10275007						
	Symbia T NM Gantry	08719200						
	Symbia T2 CT	11062815						
<b>DESCRIPTION:</b>	Component of Symbia T System							
<b>MOUNTING:</b>	Rigid Base (Floor) Mounted using (4) – ¾" dia Gr 8 bolts to interface frame.							
<b>PROPERTIES:</b>								
<b>DIMENSIONS (in.)</b>								
Width	Depth	Height	Weight (lb.)					
92	52.5	80.4	7715					
<b>LOWEST RESONANT FREQUENCY (Hz.)</b>								
Front-Axis	Side-Axis	Vert-Axis						
1.3	4.0	9.5						
<b>SHAKE TABLE TEST PARAMETERS</b>								
	TEST CRITERIA	S <sub>DS</sub> (G)	z/h	I <sub>p</sub>	A <sub>FLX-H</sub> (G)	A <sub>RIG-H</sub> (G)	A <sub>FLX-V</sub> (G)	A <sub>RIG-V</sub> (G)
	ICC-ES AC156	2.0	1.0	1.5	3.20	2.40	1.34	0.54
Unit maintained structural integrity and remained functional per manufacturer requirement								



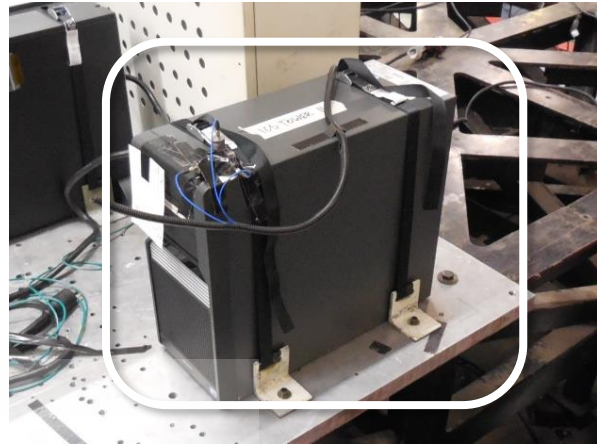
<b>UUT- 3 Symbia Intevo Front Bed</b>								
<b>MANUFACTURER:</b>	Siemens Medical Solutions USA							
<b>IDENTIFICATION:</b>	Model No.: 10609194 (as labeled) 11217013 (as configured)							
<b>DESCRIPTION:</b>	Component of Symbia Intevo Systems							
<b>MOUNTING:</b>	Rigid Base (Floor) Mounted (6) – 3/8" dia Gr 8 bolts threaded into interface frame.							
<b>PROPERTIES:</b>								
<b>DIMENSIONS (in.)</b>				<b>LOWEST RESONANT FREQUENCY (Hz.)</b>				
Width	Depth	Height	Weight (lb.)	Transverse-Axis	Longitudinal-Axis	Vertical-Axis		
32.2	105 min – 199 max	21 min – 47 max	2666 + 400 patient	7.3	33.9	8.8		
<b>SHAKE TABLE TEST PARAMETERS</b>								
	TEST CRITERIA	S <sub>DS</sub> (G)	z/h	I <sub>p</sub>	A <sub>FLX-H</sub> (G)	A <sub>RIG-H</sub> (G)	A <sub>FLX-V</sub> (G)	A <sub>RIG-V</sub> (G)
	ICC-ES AC156	2.0	1.0	1.5	3.20	2.40	1.34	0.54
Unit maintained structural integrity and remained functional per manufacturer requirement								



<b>UUT- 4 Rear PHS (RPHS)</b>								
<b>MANUFACTURER:</b>	Siemens Medical Solutions USA							
<b>IDENTIFICATION:</b>	RPHS Model No.: 11106014 SNAC Model No.: 10609924							
<b>DESCRIPTION:</b>	Component of Symbia Intevo systems							
<b>MOUNTING:</b>	Rigid Base (Floor) Mounted using (8) – 3/8" diam. Allen head cap screws threaded into interface frame							
<b>PROPERTIES:</b>								
<b>DIMENSIONS (in.)</b>				<b>LOWEST RESONANT FREQUENCY (Hz.)</b>				
Width	Depth	Height	Weight (lb.)	Transverse-Axis	Longitudinal-Axis	Vertical-Axis		
24.5	41.8	30.5 min - 38.9max	385 + 400 patient	4.3	28.0	8.9		
<b>SHAKE TABLE TEST PARAMETERS</b>								
	TEST CRITERIA	S <sub>DS</sub> (G)	z/h	I <sub>p</sub>	A <sub>FLX-H</sub> (G)	A <sub>RIG-H</sub> (G)	A <sub>FLX-V</sub> (G)	A <sub>RIG-V</sub> (G)
	ICC-ES AC156	2.0	1.0	1.5	3.20	2.40	1.34	0.54
Unit maintained structural integrity and remained functional per manufacturer requirement								



<b>UUT- 5 Image Control System (ICS) (Tower 11M)</b>									
<b>MANUFACTURER:</b>		Fujitsu							
<b>IDENTIFICATION:</b>		Model No.:		10590813					
<b>DESCRIPTION:</b>		Component of Symbia Intevo & Symbia T Systems							
<b>MOUNTING:</b>		<p>Rigid Base (Floor) Mounted using a strap assembly at front and rear. Each strap assembly consisting of:                      1" wide nylon strap w/ metal cam buckle (50 lb tension / 200 lb WLL) looped through slots in vertical legs of (2) – L2½ x 2½ x ¼ x 0'-2½" brackets positioned snug against unit.</p> <p>Each bracket attached w/ 3/8" diameter Allen Head cap screw threaded into aluminum plate.                      (1 set ea. front &amp; rear, 4 bolts total.)</p>							
<b>PROPERTIES:</b>									
DIMENSIONS (in.)					LOWEST RESONANT FREQUENCY (Hz.)				
Width	Depth	Height	Weight (lb.)	Front-Axis	Side-Axis	Vert-Axis			
8.5	20.5	17.5	50	29.0	38.8	>50			
<b>SHAKE TABLE TEST PARAMETERS</b>									
	TEST CRITERIA	S <sub>DS</sub> (G)	z/h	I <sub>p</sub>	A <sub>FLX-H</sub> (G)	A <sub>RIG-H</sub> (G)	A <sub>FLX-V</sub> (G)	A <sub>RIG-V</sub> (G)	
	ICC-ES AC156	2.0	1.0	1.5	3.20	2.40	1.34	0.54	
Unit maintained structural integrity and remained functional per manufacturer requirement									



<b>UUT- 6 Image Reconstruction System (IRS) (Tower 10G)</b>									
<b>MANUFACTURER:</b>		Fujitsu							
<b>IDENTIFICATION:</b>		Model No.:		10498302					
<b>DESCRIPTION:</b>		Component of Symbia Intevo & Symbia T Systems							
<b>MOUNTING:</b>		<p>Rigid Base (Floor) Mounted using a strap assembly at front and rear. Each strap assembly consisting of:                      1" wide nylon strap w/ metal cam buckle (50 lb tension / 200 lb WLL) looped through slots in vertical legs of (2) – L2½ x 2½ x ¼ x 0'-2½" brackets positioned snug against unit.</p> <p>Each bracket attached w/ 3/8" diameter Allen Head cap screw threaded into aluminum plate.                      (1 set ea. front &amp; rear, 4 bolts total.)</p>							
<b>PROPERTIES:</b>									
DIMENSIONS (in.)					LOWEST RESONANT FREQUENCY (Hz.)				
Width	Depth	Height	Weight (lb.)	Transverse-Axis	Longitudinal-Axis	Vertical-Axis			
8.5	20.5	17.5	47	27.2	16.0	45.0			
<b>SHAKE TABLE TEST PARAMETERS</b>									
	TEST CRITERIA	S <sub>DS</sub> (G)	z/h	I <sub>p</sub>	A <sub>FLX-H</sub> (G)	A <sub>RIG-H</sub> (G)	A <sub>FLX-V</sub> (G)	A <sub>RIG-V</sub> (G)	
	ICC-ES AC156	2.0	1.0	1.5	3.20	2.40	1.34	0.54	
Unit maintained structural integrity and remained functional per manufacturer requirement									



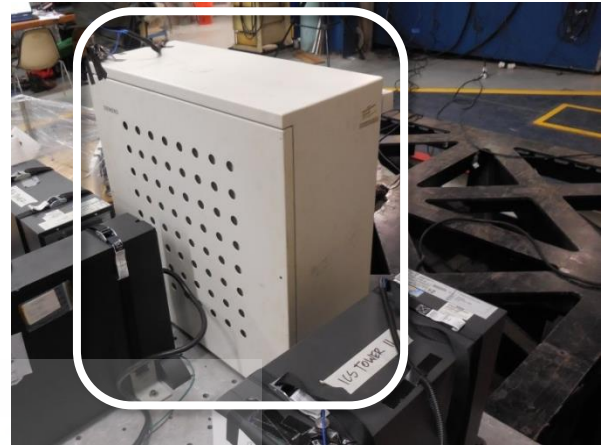
<b>UUT- 8 Control Box</b>								
<b>MANUFACTURER:</b>	Siemens Medical Solutions USA							
<b>IDENTIFICATION:</b>	Model No.: 08598885							
<b>DESCRIPTION:</b>	Component of Symbia Intevo & Symbia T Systems							
<b>MOUNTING:</b>	(2) - 1" x 2" adhesive Velcro strips							
<b>PROPERTIES:</b>								
<b>DIMENSIONS (in.)</b>				<b>LOWEST RESONANT FREQUENCY (Hz.)</b>				
Width	Depth	Height	Weight (lb.)	Front-Axis	Side-Axis	Vert-Axis		
7.5	7.5	1.5	1.5	N/A	N/A	N/A		
<b>SHAKE TABLE TEST PARAMETERS</b>								
	TEST CRITERIA	S <sub>DS</sub> (G)	z/h	I <sub>p</sub>	A <sub>FLX-H</sub> (G)	A <sub>RIG-H</sub> (G)	A <sub>FLX-V</sub> (G)	A <sub>RIG-V</sub> (G)
	ICC-ES AC156	2.0	1.0	1.5	3.20	2.40	1.34	0.54
Unit maintained structural integrity and remained functional per manufacturer requirement								



<b>UUT- 9 19" LCD DICOM Monitor</b> 03-13-2024								
<b>MANUFACTURER:</b>	Shenyang Torch – Bigtide Digital Technology co. LTD							
<b>IDENTIFICATION:</b>	Model No.: 10656056							
<b>DESCRIPTION:</b>	Component of Symbia Intevo & Symbia T Systems							
<b>MOUNTING:</b>	(2) - #10-32 machine screws with 1.25" OD washers and hex nuts into 3/4" plywood sheathing							
<b>PROPERTIES:</b>								
<b>DIMENSIONS (in.)</b>				<b>LOWEST RESONANT FREQUENCY (Hz.)</b>				
Width	Depth	Height	Weight (lb.)	Transverse-Axis	Longitudinal-Axis	Vertical-Axis		
16.5	3.8	16 min to 17.5 max	20	N/A	N/A	N/A		
<b>SHAKE TABLE TEST PARAMETERS</b>								
	TEST CRITERIA	S <sub>DS</sub> (G)	z/h	I <sub>p</sub>	A <sub>FLX-H</sub> (G)	A <sub>RIG-H</sub> (G)	A <sub>FLX-V</sub> (G)	A <sub>RIG-V</sub> (G)
	ICC-ES AC156	2.0	1.0	1.5	3.20	2.40	1.34	0.54
Unit maintained structural integrity and remained functional per manufacturer requirement								

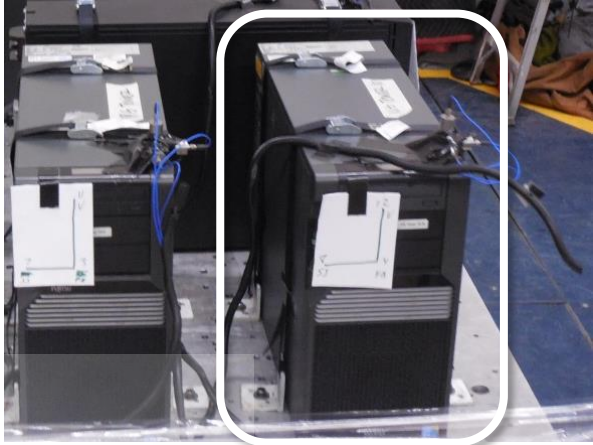



<b>UUT- 10</b>		<b>Line Control Box (LCB)</b>						
<b>MANUFACTURER:</b>	Siemens Medical Solutions USA							
<b>IDENTIFICATION:</b>	Model No.: 10165884							
<b>DESCRIPTION:</b>	Component of Symbia Intevo & Symbia T Systems							
<b>MOUNTING:</b>	Rigid Base (Floor) Mounted using (4) – 3/8" dia Gr 8 bolts							
<b>PROPERTIES:</b>								
<b>DIMENSIONS (in.)</b>								
Width	Depth	Height	Weight (lb.)					
29.5	14	31.5	245					
<b>LOWEST RESONANT FREQUENCY (Hz.)</b>								
Front-Axis	Side-Axis	Vert-Axis						
43.5	24.5	>50						
<b>SHAKE TABLE TEST PARAMETERS</b>								
	TEST CRITERIA	S <sub>DS</sub> (G)	z/h	I <sub>p</sub>	A <sub>FLX-H</sub> (G)	A <sub>RIG-H</sub> (G)	A <sub>FLX-V</sub> (G)	A <sub>RIG-V</sub> (G)
	ICC-ES AC156	2.0	1.0	1.5	3.20	2.40	1.34	0.54
Unit maintained structural integrity and remained functional per manufacturer requirement								





<b>UUT- 12</b>		<b>Uninterruptible Power Supply (UPS) for SPECT</b>						
<b>MANUFACTURER:</b>	APC							
<b>IDENTIFICATION:</b>	Model No. 10119031							
<b>DESCRIPTION:</b>	Component of Symbia Intevo Systems							
<b>MOUNTING:</b>	<p>Rigid Base (Floor) Mounted using a strap assembly at front and rear. Each strap assembly consisting of:                      1" wide nylon strap w/ metal cam buckle (50 lb tension / 200 lb WLL) looped through slots in vertical legs of (2) – L2½ x 2½ x ¼ x 0'-2½" brackets positioned snug against unit.</p> <p>Each bracket attached w/ 3/8" diameter Allen Head cap screw threaded into aluminum plate.                      (1 set ea. front &amp; rear, 4 bolts total.)</p>							
<b>PROPERTIES:</b>								
<b>DIMENSIONS (in.)</b>								
Width	Depth	Height	Weight (lb.)					
5	28	18	124					
<b>LOWEST RESONANT FREQUENCY (Hz.)</b>								
Transverse-Axis	Longitudinal-Axis	Vertical-Axis						
17.2	>50	>50						
<b>SHAKE TABLE TEST PARAMETERS</b>								
	TEST CRITERIA	S <sub>DS</sub> (G)	z/h	I <sub>p</sub>	A <sub>FLX-H</sub> (G)	A <sub>RIG-H</sub> (G)	A <sub>FLX-V</sub> (G)	A <sub>RIG-V</sub> (G)
	ICC-ES AC156	2.0	1.0	1.5	3.20	2.40	1.34	0.54
Unit maintained structural integrity and remained functional per manufacturer requirement								



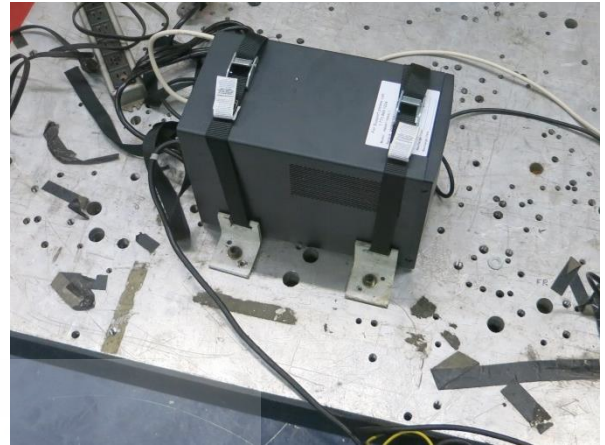
<b>UUT- 13</b>		<b>Image Control System (ICS) (Tower 10M)</b>						
<b>MANUFACTURER:</b>		Fujitsu						
<b>IDENTIFICATION:</b>		Model No. 10498294						
<b>DESCRIPTION:</b>		Component of Symbia Intevo & Symbia T Systems						
<b>MOUNTING:</b>		<p>Rigid Base (Floor) Mounted using a strap assembly at front and rear. Each strap assembly consisting of:                      1" wide nylon strap w/ metal cam buckle (50 lb tension / 200 lb WLL) looped through slots in vertical legs of (2) – L2½ x 2½ x ¼ x 0'-2½" brackets positioned snug against unit.</p> <p>Each bracket attached w/ 3/8" diameter Allen Head cap screw threaded into aluminum plate.                      (1 set ea. front &amp; rear, 4 bolts total.)</p>						
								
<b>PROPERTIES:</b>								
DIMENSIONS (in.)				LOWEST RESONANT FREQUENCY (Hz.)				
Width	Depth	Height	Weight (lb.)	Front-Axis	Side-Axis	Vert-Axis		
8.5	20.5	17.5	50	36.1	18.7	>50		
<b>SHAKE TABLE TEST PARAMETERS</b>								
	TEST CRITERIA	S <sub>DS</sub> (G)	z/h	I <sub>p</sub>	A <sub>FLX-H</sub> (G)	A <sub>RIG-H</sub> (G)	A <sub>FLX-V</sub> (G)	A <sub>RIG-V</sub> (G)
	ICC-ES AC156	2.0	1.0	1.5	3.20	2.40	1.34	0.54
Unit maintained structural integrity and remained functional per manufacturer requirement								

<b>UUT- 14</b>		<b>Keyboard</b>						
<b>MANUFACTURER:</b>		Hewlett Packard						
<b>IDENTIFICATION:</b>		Model No. 10266661						
<b>DESCRIPTION:</b>		Component of Symbia Intevo & Symbia T Systems						
<b>MOUNTING:</b>		(2) - 1" x 3" Velcro strips						
								
<b>PROPERTIES:</b>								
DIMENSIONS (in.)				LOWEST RESONANT FREQUENCY (Hz.)				
Width	Depth	Height	Weight (lb.)	Transverse-Axis	Longitudinal-Axis	Vertical-Axis		
18	8	1	1.5	N/A	N/A	N/A		
<b>SHAKE TABLE TEST PARAMETERS</b>								
	TEST CRITERIA	S <sub>DS</sub> (G)	z/h	I <sub>p</sub>	A <sub>FLX-H</sub> (G)	A <sub>RIG-H</sub> (G)	A <sub>FLX-V</sub> (G)	A <sub>RIG-V</sub> (G)
	ICC-ES AC156	2.0	1.0	1.5	3.20	2.40	1.34	0.54
Unit maintained structural integrity and remained functional per manufacturer requirement								

<b>UUT- 16 Image Reconstruction System (IRS) (Tower 10B)</b>								
<b>MANUFACTURER:</b>		Fujitsu						
<b>IDENTIFICATION:</b>		Model No. 10498300						
<b>DESCRIPTION:</b>		Component Symbia T2 & Symbia T Systems						
<b>MOUNTING:</b>		Rigid Base (Floor) Mounted using a strap assembly at front and rear. Each strap assembly consisting of: 1" wide nylon strap w/ metal cam buckle (50 lb tension / 200 lb WLL) looped through slots in vertical legs of (2) – L2½ x 2½ x ¼ x 0'-2½" brackets positioned snug against unit.  Each bracket attached w/ 3/8" diameter Allen Head cap screw threaded into aluminum plate. (1 set ea. front & rear, 4 bolts total.)						
								
<b>PROPERTIES:</b>								
DIMENSIONS (in.)				Weight (lb.)	LOWEST RESONANT FREQUENCY (Hz.)			
Width	Depth	Height	Front-Axis		Side-Axis	Vert-Axis		
8.5	20.5	17.5	47	45.9	>50	>50		
<b>SHAKE TABLE TEST PARAMETERS</b>								
	TEST CRITERIA	S <sub>DS</sub> (G)	z/h	I <sub>p</sub>	A <sub>FLX-H</sub> (G)	A <sub>RIG-H</sub> (G)	A <sub>FLX-V</sub> (G)	A <sub>RIG-V</sub> (G)
	ICC-ES AC156	2.0	1.0	1.5	3.20	2.40	1.34	0.54
Unit maintained structural integrity and remained functional per manufacturer requirement								

<b>UUT- 17 Rear PHS Patient Table</b>								
<b>MANUFACTURER:</b>		Siemens Medical Solutions USA						
<b>IDENTIFICATION:</b>		Rear PHS Model No.: 11106014						
		SNAC Model No.: 10765266						
<b>DESCRIPTION:</b>		Component of Symbia Intevo & Symbia T systems						
<b>MOUNTING:</b>		Rigid Base (Floor) Mounted using (8) – 3/8" diam. Allen head cap screws threaded into HSS8 x 8 x 3/8 interface frame.						
								
<b>PROPERTIES:</b>								
DIMENSIONS (in.)				Weight (lb.)	LOWEST RESONANT FREQUENCY (Hz.)			
Width	Depth	Height	Transverse-Axis		Longitudinal-Axis	Vertical-Axis		
24.5	41.8	30.5 min - 38.9max	385	10.4	15.5	17.7		
<b>SHAKE TABLE TEST PARAMETERS</b>								
	TEST CRITERIA	S <sub>DS</sub> (G)	z/h	I <sub>p</sub>	A <sub>FLX-H</sub> (G)	A <sub>RIG-H</sub> (G)	A <sub>FLX-V</sub> (G)	A <sub>RIG-V</sub> (G)
	ICC-ES AC156	2.0	1.0	1.5	3.20	2.40	1.34	0.54
Unit maintained structural integrity and remained functional per manufacturer requirement								

<b>UUT- A4</b>		<b>TrippLite SMART1500SLT UPS</b>						
<b>MANUFACTURER:</b>		TrippLite						
<b>IDENTIFICATION:</b>		Model No. 5245316						
<b>DESCRIPTION:</b>		1500 VA UPS						
<b>MOUNTING:</b>		<p>Rigid Base (Floor) Mounted using a strap assembly at front and rear. Each strap assembly consisting of: 1" wide nylon strap w/ metal cam buckle (50 lb tension / 200 lb WLL) looped through slots in vertical legs of (2) – L2½ x 2½ x ¼ x 0'-2½" brackets positioned snug against unit.</p> <p>Each bracket attached w/ 3/8" diameter Allen Head cap screw threaded into aluminum plate. (1 set ea. front &amp; rear, 4 bolts total.)</p>						
<b>PROPERTIES:</b>								
DIMENSIONS (in.)					LOWEST RESONANT FREQUENCY (Hz.)			
Width	Depth	Height	Weight (lb.)	Front-Axis	Side-Axis	Vert-Axis		
6.8	13.2	10.2	45	40.9	46.4	>50		
<b>SHAKE TABLE TEST PARAMETERS</b>								
	TEST CRITERIA	S <sub>DS</sub> (G)	z/h	I <sub>p</sub>	A <sub>FLX-H</sub> (G)	A <sub>RIG-H</sub> (G)	A <sub>FLX-V</sub> (G)	A <sub>RIG-V</sub> (G)
	ICC-ES AC156	2.0	1.0	1.5	3.20	2.40	1.34	0.54
Unit maintained structural integrity and remained functional per manufacturer requirement								



<b>UUT- A5</b>		<b>EATON EX 2200 VA UPS</b>						
<b>MANUFACTURER:</b>		EATON						
<b>IDENTIFICATION:</b>		Model No. 7735090						
<b>DESCRIPTION:</b>		UPS 230V 2 Phase 2200VA 230V 2 Phase Tower configuration						
<b>MOUNTING:</b>		<p>Rigid Base (Floor) Mounted using a strap assembly at front and rear. Each strap assembly consisting of: 1" wide nylon strap w/ metal cam buckle (50 lb tension / 200 lb WLL) looped through slots in vertical legs of (2) – L2½ x 2½ x ¼ x 0'-2½" brackets positioned snug against unit.</p> <p>Each bracket attached w/ 3/8" diameter Allen Head cap screw threaded into aluminum plate. (1 set ea. front &amp; rear, 4 bolts total.)</p>						
<b>PROPERTIES:</b>								
DIMENSIONS (in.)					LOWEST RESONANT FREQUENCY (Hz.)			
Width	Depth	Height	Weight (lb.)	Transverse-Axis	Longitudinal-Axis	Vertical-Axis		
5.16	19.29	17.32	70.55	18.1	39.2	>50		
<b>SHAKE TABLE TEST PARAMETERS</b>								
	TEST CRITERIA	S <sub>DS</sub> (G)	z/h	I <sub>p</sub>	A <sub>FLX-H</sub> (G)	A <sub>RIG-H</sub> (G)	A <sub>FLX-V</sub> (G)	A <sub>RIG-V</sub> (G)
	ICC-ES AC156	2.0	1.0	1.5	3.20	2.40	1.34	0.54
Unit maintained structural integrity and remained functional per manufacturer requirement								





<b>UUT-B1518-4 Image Reconstruction System (IRS) - G2</b>								
<b>MANUFACTURER:</b>		Siemens Medical Solutions USA						
<b>IDENTIFICATION:</b>		Model No.: 10928210						
<b>DESCRIPTION:</b>		Component of SOMATOM SCOPE CT System.						
<b>MOUNTING:</b>		<p>Rigid Base (Floor) Mounted using: 1" wide nylon strap w/ metal cinch (100 lb tension / 200 lb WLL) looped through slots in vertical legs of (2) – L2½ x 2½ x ¼ x 0'-2½" brackets positioned snug against unit.</p> <p>Each bracket attached w/ 3/8" diameter Allen Head cap screw threaded into aluminum plate. (1 set ea. front &amp; rear, 4 bolts total.)</p>						
<b>PROPERTIES:</b>								
DIMENSIONS (in.)					LOWEST RESONANT FREQUENCY (Hz.)			
Width	Depth	Height	Weight (lb.)	Transverse-Axis	Longitudinal-Axis	Vertical-Axis		
7	27.5	21.3	50	25.3	42.3	44.1		
<b>SHAKE TABLE TEST PARAMETERS</b>								
	TEST CRITERIA	S <sub>Ds</sub> (g)	z/h	I <sub>p</sub>	A <sub>FLX-H</sub> (g)	A <sub>RIG-H</sub> (g)	A <sub>FLX-V</sub> (g)	A <sub>RIG-V</sub> (g)
	ICC-ES AC156	2.5 2.0	0 1	1.5	2.50 3.20	1.00 2.40	1.68 1.34	0.68 0.54
Unit maintained structural integrity and remained functional per manufacturer requirement								



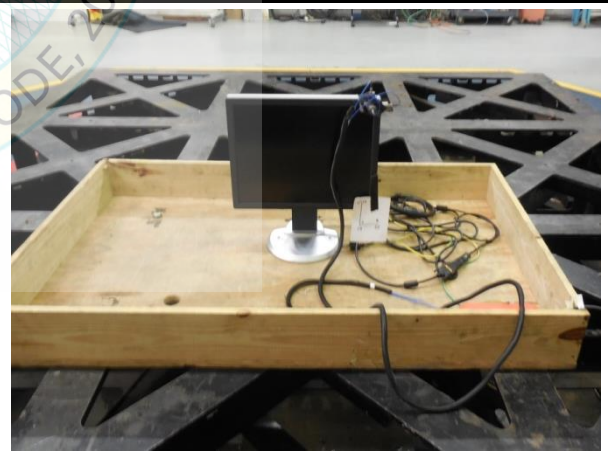
<b>UUT-C1618-1 Symbia Intevo Front Bed</b>								
<b>MANUFACTURER:</b>		Siemens Medical Solutions USA						
<b>IDENTIFICATION:</b>		Model No.: 11217013						
<b>DESCRIPTION:</b>		<p>Component of Symbia Intevo Systems Automated Collimator Change (ACC) Integrated Collimator Change (ICC) Automated Quality Control (AQC)</p>						
<b>MOUNTING:</b>		Rigid Base (Floor) Mounted using (6) – 3/8" dia GR 8 bolts						
<b>PROPERTIES:</b>								
DIMENSIONS (in.)					LOWEST RESONANT FREQUENCY (Hz.)			
Width	Depth	Height	Weight (lb.)	Transverse-Axis	Longitudinal-Axis	Vertical-Axis		
32.2	97 / 181	27 / 47	2554	3.5	18.7	8.7		
<b>SHAKE TABLE TEST PARAMETERS</b>								
	TEST CRITERIA	S <sub>Ds</sub> (g)	z/h	I <sub>p</sub>	A <sub>FLX-H</sub> (g)	A <sub>RIG-H</sub> (g)	A <sub>FLX-V</sub> (g)	A <sub>RIG-V</sub> (g)
	ICC-ES AC156	2.0	1.0	1.5	3.20	2.40	1.34	0.54
Unit maintained structural integrity and remained functional per manufacturer requirement								



UUT-C1618-2 Rear PHS Patient Table w/ Siemens Nuclear Acquisition Computer								
<b>MANUFACTURER:</b>		Siemens Medical Solutions USA						
<b>IDENTIFICATION:</b>		Model No.: 11106014						
<b>DESCRIPTION:</b>		Component of Symbia Intevo systems Rear Patient Handling System (RPHS) w/ Siemens Nuclear Acquisition Computer (SNAC) (10609924)						
<b>MOUNTING:</b>		Rigid Base (Floor) Mounted using (8) – 3/8" dia GR 8 bolts						
<b>PROPERTIES:</b>								
DIMENSIONS (in.)				LOWEST RESONANT FREQUENCY (Hz.)				
Width	Depth	Height	Weight (lb.)	Transverse-Axis	Longitudinal-Axis	Vertical-Axis		
24.5	41.8 / 58	30.5 / 38.9	384	3.5	13.1	8.7		
<b>SHAKE TABLE TEST PARAMETERS</b>								
	TEST CRITERIA	S <sub>Ds</sub> (g)	z/h	I <sub>p</sub>	A <sub>FLX-H</sub> (g)	A <sub>RIG-H</sub> (g)	A <sub>FLX-V</sub> (g)	A <sub>RIG-V</sub> (g)
	ICC-ES AC156	2.0	1.0	1.5	3.20	2.40	1.34	0.54
Unit maintained structural integrity and remained functional per manufacturer requirement								



UUT-C1618-5 19" LCD DICOM Monitor by Shenyang Torch-Bigtide Digital Technology Co. (DSC1914-D)								
<b>MANUFACTURER:</b>		Siemens Medical Solutions USA						
<b>IDENTIFICATION:</b>		Siemens Model No.: 11062596		Shenyang Model No.: DSC1914-D				
<b>DESCRIPTION:</b>								
<b>MOUNTING:</b>		Countertop anchored using (2) – #10 – 32 machine screws with 1.25" OD washers and hex nuts through plywood						
<b>PROPERTIES:</b>								
DIMENSIONS (in.)				LOWEST RESONANT FREQUENCY (Hz.)				
Width	Depth	Height	Weight (lb.)	Front/Back	Side/Side	Vertical-Axis		
16.5	3.5 / 6 / 9	15.0 to 19.5	17	7.7	5.4	8.0		
<b>SHAKE TABLE TEST PARAMETERS</b>								
	TEST CRITERIA	S <sub>Ds</sub> (g)	z/h	I <sub>p</sub>	A <sub>FLX-H</sub> (g)	A <sub>RIG-H</sub> (g)	A <sub>FLX-V</sub> (g)	A <sub>RIG-V</sub> (g)
	ICC-ES AC156	2.0	1.0	1.5	3.20	2.40	1.34	0.54
Unit maintained structural integrity and remained functional per manufacturer requirement								



**UUT- D1729-1 Rear Patient Handling System (RPHS) w/ SNAC**

<b>MANUFACTURER:</b>	Siemens Medical Solutions USA, Inc
<b>IDENTIFICATION:</b>	Model No.: 11106014 (RPHS) / 11008000 (SNAC) Serial No.: N/A (RPHS) / 2UA7111BLN (SNAC)
<b>DESCRIPTION:</b>	Component of Symbia Intevo Systems SNAC: HP Model RP5810 HP Serial No.: 2UA7111BLN Product No.: 1FQ33UC#ABA
<b>MOUNTING:</b>	Rigid Base (Floor) Mounted using (8) – 3/8" diameter ASTM A574 socket head cap screws w/ washers to interface plate.



DIMENSIONS (in.)				LOWEST RESONANT FREQUENCY (Hz.)		
Width	Depth	Height	Weight (lb.)	Side-Axis	Front-Axis	Vertical-Axis
RPHS: 24.5	41.8	30.5 / 38.9	351	12.5	14.8	13.3
SNAC: 3.95	15.0	13.3	14.5			

ICC-ES AC156 SHAKE TABLE TEST PARAMETERS						
S <sub>Ds</sub>	z/h	I <sub>p</sub>	A <sub>FLX-H</sub>	A <sub>RIG-H</sub>	A <sub>FLX-V</sub>	A <sub>RIG-V</sub>
2.0	1	1.5	3.20	2.40	1.34	0.54

Unit maintained structural integrity and remained functional per manufacturer requirement.

**UUT- D1729-2 Image Control System – 13M 03-13-2024**

<b>MANUFACTURER:</b>	Fujitsu
<b>IDENTIFICATION:</b>	Model No.: 11062027 Serial No.: 1113
<b>DESCRIPTION:</b>	Component of Symbia Intevo Systems Fujitsu product W550 (Celsius W550 Power) Model M15W Fujitsu Serial No.: YM8002895
<b>MOUNTING:</b>	Rigid Base (Floor) Mounted using: 1" wide nylon strap w/ metal cam buckle (50 lb tension / 200 lb WLL) looped through slots in vertical legs of (2) – – L2½ x 2 x 1/8 x 0'-2" LLV steel brackets positioned 1/8" (max.) away from side of unit.  Each bracket attached w/ 3/8" diameter A574 socket head cap screw threaded into aluminum plate. (1 set ea. front & rear, 4 bolts total.)



DIMENSIONS (in.)				LOWEST RESONANT FREQUENCY (Hz.)		
Width	Depth	Height	Weight (lb.)	Side-Axis	Front-Axis	Vertical-Axis
6.9	16.5	15.6	26	23.1	>50	>50

ICC-ES AC156 SHAKE TABLE TEST PARAMETERS						
S <sub>Ds</sub>	z/h	I <sub>p</sub>	A <sub>FLX-H</sub>	A <sub>RIG-H</sub>	A <sub>FLX-V</sub>	A <sub>RIG-V</sub>
2.0	1	1.5	3.20	2.40	1.34	0.54

Unit maintained structural integrity and remained functional per manufacturer requirement.

**UUT- D1729-3 Image Reconstruction System – 13B**

<b>MANUFACTURER:</b>	Siemens Medical Solutions USA, Inc
<b>IDENTIFICATION:</b>	Model No.: 11062050 Serial No.: 1102
<b>DESCRIPTION:</b>	Component of Symbia Intevo Systems Fujitsu product W550 (Celsius W550 Power) Model M15W Fujitsu Serial No.: YM8U002762
<b>MOUNTING:</b>	Rigid Base (Floor) Mounted using: 1" wide nylon strap w/ metal cam buckle (50 lb tension / 200 lb WLL) looped through slots in vertical legs of (2) – L2½ x 2 x 1/8 x 0'-2" LLV steel brackets positioned 1/8" (max.) away from side of unit.  Each bracket attached w/ 3/8" diameter A574 socket head cap screw threaded into aluminum plate. (1 set ea. front & rear, 4 bolts total.)



DIMENSIONS (in.)				Weight (lb.)	LOWEST RESONANT FREQUENCY (Hz.)		
Width	Depth	Height	Side-Axis		Front-Axis	Vertical-Axis	
6.9	16.5	15.6	24.5	21.7	>50	>50	

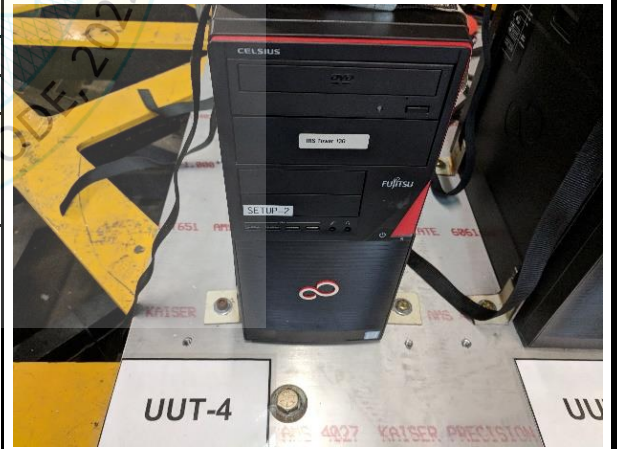
**ICC-ES AC156 SHAKE TABLE TEST PARAMETERS**

S <sub>DS</sub>	z/h	I <sub>p</sub>	A <sub>FLX-H</sub>	A <sub>RIG-H</sub>	A <sub>FLX-V</sub>	A <sub>RIG-V</sub>
2.0	1	1.5	3.20	2.40	1.34	0.54

Unit maintained structural integrity and remained functional per manufacturer requirement.

**UUT- D1729-4 Image Reconstruction System – 13G**

<b>MANUFACTURER:</b>	Siemens Medical Solutions USA, Inc
<b>IDENTIFICATION:</b>	Model No.: 11062052 Serial No.: 1102
<b>DESCRIPTION:</b>	Component of Symbia Intevo Systems Fujitsu product W550 (Celsius W550 Power) Model M15W Fujitsu Serial No.: YM8002757
<b>MOUNTING:</b>	Rigid Base (Floor) Mounted using: 1" wide nylon strap w/ metal cam buckle (50 lb tension / 200 lb WLL) looped through slots in vertical legs of (2) – L2½ x 2 x 1/8 x 0'-2" LLV steel brackets positioned 1/8" (max.) away from side of unit.  Each bracket attached w/ 3/8" diameter A574 socket head cap screw threaded into aluminum plate. (1 set ea. front & rear, 4 bolts total.)



DIMENSIONS (in.)				Weight (lb.)	LOWEST RESONANT FREQUENCY (Hz.)		
Width	Depth	Height	Side-Axis		Front-Axis	Vertical-Axis	
6.9	16.5	15.6	25	25.3	>50	>50	

**ICC-ES AC156 SHAKE TABLE TEST PARAMETERS**

S <sub>DS</sub>	z/h	I <sub>p</sub>	A <sub>FLX-H</sub>	A <sub>RIG-H</sub>	A <sub>FLX-V</sub>	A <sub>RIG-V</sub>
2.0	1	1.5	3.20	2.40	1.34	0.54

Unit maintained structural integrity and remained functional per manufacturer requirement.

**UUT-E1910-1 Rear Patient Handling System (PHS) w/ SNAC**

<b>MANUFACTURER:</b>	Siemens Medical Solutions USA, Inc
<b>IDENTIFICATION:</b>	Model No.: 11106014 (RPHS) / 11366536 (SNAC) Serial No.: N/A (RPHS) / 2UA837245Z (SNAC)
<b>DESCRIPTION:</b>	-Component of the Symbia Intevo and/or Symbia T Systems -SNAC Mounted on the Rear Patient Handling System (PHS) -SNAC Model No: 11366536 Labeled: RP5820 P/N 5LR26UP#ABA Serial No.: 2UA837245Z
<b>MOUNTING:</b>	Rigid Base (Floor) Mounted using (8) – 3/8" diameter ASTM A574 socket head cap screws w/ washers to interface plate.



DIMENSIONS (in.)				LOWEST RESONANT FREQUENCY (Hz.)		
Width	Depth	Height	Weight (lb.)	Side-Axis	Front-Axis	Vertical-Axis
RPHS: 24.5	41.8	30.5 / 38.9	351	12.10	12.07	40.39
SNAC: 3.95	15.0	13.3	13.5			

ICC-ES AC156 SHAKE TABLE TEST PARAMETERS						
S <sub>DS</sub>	z/h	I <sub>p</sub>	A <sub>FLX-H</sub>	A <sub>RIG-H</sub>	A <sub>FLX-V</sub>	A <sub>RIG-V</sub>
2.0	1	1.5	3.20	2.40	1.34	0.54

Unit maintained structural integrity and remained functional per manufacturer requirement.

**UUT-F2006-1 Image Reconstruction System (IRS) 13P**

<b>MANUFACTURER:</b>	Fujitsu
<b>IDENTIFICATION:</b>	Model No.: 11268053 Serial No.: 1616
<b>DESCRIPTION:</b>	- Component of the Symbia Intevo Bold SPECT/CT System.
<b>MOUNTING:</b>	Rigid Base (Floor) Mounted using: 1" wide nylon strap w/ metal cam buckle (50 lb tension / 200 lb WLL) looped through slots in vertical legs of (2) – L2½ x 2 x 1/8 x 0'-2" LLV steel brackets positioned 1/8" (max.) away from side of unit.  Each bracket attached w/ 3/8" diameter A574 socket head cap screw threaded into aluminum plate. (1 set ea. front & rear, 4 bolts total.)

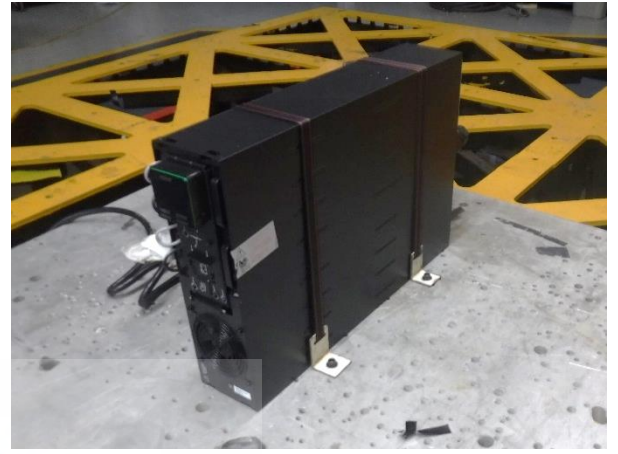


DIMENSIONS (in.)				LOWEST RESONANT FREQUENCY (Hz.)		
Width	Depth	Height	Weight (lb.)	Side-Axis	Front-Axis	Vertical-Axis
6.9	16.5	15.6	23.5	47.24	> 50	> 50

ICC-ES AC156 SHAKE TABLE TEST PARAMETERS						
S <sub>DS</sub>	z/h	I <sub>p</sub>	A <sub>FLX-H</sub>	A <sub>RIG-H</sub>	A <sub>FLX-V</sub>	A <sub>RIG-V</sub>
2.0	1	1.5	3.20	2.40	1.34	0.54

Unit maintained structural integrity and remained functional per manufacturer requirement.

UUT-G2124-1 Uninterruptible Power Supply (UPS)									
MANUFACTURER:		APC							
IDENTIFICATION:		Part No. 11298558 Serial No.: AS2105271841							
DESCRIPTION:		Component of Symbia Intevo Systems OEM Model No.: SMRT5KRMXLW-HW  Requires Siemens Seismic Restraint Kit P/N: 10432402							
MOUNTING:		Rigid Base (Floor) Mounted using a strap assembly at front and rear. Each strap assembly consisting of: 1" wide nylon strap w/ metal cam buckle (50 lb tension / 200 lb WLL) looped through slots in vertical legs of (2) – L2½ x 2½ x ¼ x 0'-2½" brackets positioned snug against unit. Each bracket attached w/ 3/8" diameter Allen Head cap screw threaded into aluminum plate. (1 set ea. front & rear, 4 bolts total.)							
PROPERTIES:									
DIMENSIONS (in.)				LOWEST RESONANT FREQUENCY (Hz.)					
Width	Depth	Height	Weight (lb.)	Transverse-Axis	Longitudinal-Axis	Vertical-Axis			
5	28	17	124.8	15.76	>50	>50			
SHAKE TABLE TEST PARAMETERS / OSP-0432									
	TEST CRITERIA	S <sub>DS</sub> (G)	z/h	I <sub>p</sub>	A <sub>FLX-H</sub> (G)	A <sub>RIG-H</sub> (G)	A <sub>FLX-V</sub> (G)	A <sub>RIG-V</sub> (G)	
	ICC-ES AC156	2.0 2.5	1.0 0.0	1.5	3.20	2.40	1.68	0.68	
Unit maintained structural integrity and remained functional per manufacturer requirement									



UUT-H2319-1 Image Control System (IRS) 14BM									
MANUFACTURER:		Fujitsu							
IDENTIFICATION:		Siemens Label Computer pS20 – ICS14BM Part No.: 11513971 Serial No.: 1027				Fujitsu Label Model No.: 11513952 Serial No.: EICX003816			
DESCRIPTION:		Component of Symbia Intevo Family SPECT/CT System  * Tabulated weight excludes the 5lb weight of the seismic mounting kit, which include 4 brackets and 2 set of straps.							
MOUNTING:		Rigid Base (Floor) Mounted using: 1" wide nylon strap w/ metal cam buckle (700 lb WLL) (p/n 11591134) looped through slots in vertical legs of (2) – L3 x 3 x 1/4 x 0'-3" LLV steel brackets (p/n 1191133) positioned 1/8" (max.) away from side of unit.  Each bracket attached w/ 3/8" diameter A574 socket head cap screw threaded into aluminum plate. (1 set ea. front & rear, 4 bolts total.)							
DIMENSIONS (in.)				LOWEST RESONANT FREQUENCY (Hz.)					
Width	Depth	Height	Weight (lb.)	Side-Axis	Front-Axis	Vertical-Axis			
7.09	12.97	14.76	17.64 *	> 50	> 50	> 50			
ICC-ES AC156 SHAKE TABLE TEST PARAMETERS									
S <sub>ds</sub>	z/h	I <sub>p</sub>	A <sub>FLX-H</sub>	A <sub>RIG-H</sub>	A <sub>FLX-V</sub>	A <sub>RIG-V</sub>			
2.0	1	1.5	3.20	2.40	1.34	0.54			
Unit maintained structural integrity and remained functional per manufacturer requirement.									



**UUT-H2319-2 Image Reconstruction System (IRS) 14B**

<b>MANUFACTURER:</b>	Fujitsu		
<b>IDENTIFICATION:</b>	<u>Siemens Label</u>	<u>Fujitsu Label</u>	
	Computer pS20 – IRS14B Part No.: 11513973 Serial No.: 1003	Model No.: 11513954 Serial No.: EICX003490	
<b>DESCRIPTION:</b>	Component of Symbia Intevo Family SPECT/CT System  * Tabulated weight excludes the 5lb weight of the seismic mounting kit, which include 4 brackets and 2 set of straps.		
<b>MOUNTING:</b>	Rigid Base (Floor) Mounted using: 1" wide nylon strap w/ metal cam buckle (700 lb WLL) (p/n 11591134) looped through slots in vertical legs of (2) – L3 x 3 x 1/4 x 0'-3" LLV steel brackets (p/n 1191133) positioned 1/8" (max.) away from side of unit.  Each bracket attached w/ 3/8" diameter A574 socket head cap screw threaded into aluminum plate. (1 set ea. front & rear, 4 bolts total.)		



DIMENSIONS (in.)				LOWEST RESONANT FREQUENCY (Hz.)		
Width	Depth	Height	Weight (lb.)	Side-Axis	Front-Axis	Vertical-Axis
7.09	12.97	14.76	17.42 *	39.46	7.36	> 50

ICC-ES AC156 SHAKE TABLE TEST PARAMETERS						
S <sub>ds</sub>	z/h	I <sub>p</sub>	A <sub>FLX-H</sub>	A <sub>RIG-H</sub>	A <sub>FLX-V</sub>	A <sub>RIG-V</sub>
2.0	1	1.5	3.20	2.40	1.34	0.54

Unit maintained structural integrity and remained functional per manufacturer requirement.

**UUT-H2319-3 Image Reconstruction System (IRS) 14P**

<b>MANUFACTURER:</b>	Fujitsu		
<b>IDENTIFICATION:</b>	<u>Siemens Label</u>	<u>Fujitsu Label</u>	
	Computer pS20 – IRS14P Part No.: 11513975 Serial No.: 1006	Model No.: 11513957 Serial No.: EICX003533	
<b>DESCRIPTION:</b>	Component of Symbia Intevo Family SPECT/CT System  * Tabulated weight excludes the 5lb weight of the seismic mounting kit, which include 4 brackets and 2 set of straps.		
<b>MOUNTING:</b>	Rigid Base (Floor) Mounted using: 1" wide nylon strap w/ metal cam buckle (700 lb WLL) (p/n 11591134) looped through slots in vertical legs of (2) – L3 x 3 x 1/4 x 0'-3" LLV steel brackets (p/n 1191133) positioned 1/8" (max.) away from side of unit.  Each bracket attached w/ 3/8" diameter A574 socket head cap screw threaded into aluminum plate. (1 set ea. front & rear, 4 bolts total.)		



DIMENSIONS (in.)				LOWEST RESONANT FREQUENCY (Hz.)		
Width	Depth	Height	Weight (lb.)	Side-Axis	Front-Axis	Vertical-Axis
7.09	12.97	14.76	18.74 *	40.47	> 50	> 50

ICC-ES AC156 SHAKE TABLE TEST PARAMETERS						
S <sub>ds</sub>	z/h	I <sub>p</sub>	A <sub>FLX-H</sub>	A <sub>RIG-H</sub>	A <sub>FLX-V</sub>	A <sub>RIG-V</sub>
2.0	1	1.5	3.20	2.40	1.34	0.54

Unit maintained structural integrity and remained functional per manufacturer requirement.