



OFFICE OF STATEWIDE HEALTH PLANNING AND DEVELOPMENT
FACILITIES DEVELOPMENT DIVISION

**APPLICATION FOR OSHPD SPECIAL SEISMIC
CERTIFICATION PREAPPROVAL (OSP)**

OFFICE USE ONLY

APPLICATION #: OSP – 0478 – 10

OSHPD Special Seismic Certification Preapproval (OSP)

Type: New Renewal

Manufacturer Information

Manufacturer: Russell Sigler Inc.

Manufacturer's Technical Representative: Raul Mangiliman

Mailing Address: 229 Littlefield Avenue, Suite 4, South San Francisco, CA 94080

Telephone: 415.330.6624 Email: rmangiliman@siglers.com

Product Information

Product Name: 16TJ Absorption Chiller

Product Type: Chiller

Product Model Number: TSA-16TJ-12E-SF

(List all unique product identification numbers and/or part numbers)

General Description: Single-effect steam-fired absorption chiller.

Mounting Description: Base mounted – neoprene pads

Applicant Information

Applicant Company Name: TRU Compliance, LLC

Contact Person: Derek J. Manwill, S.E.

Mailing Address: 960 SW Disk Dr., Suite 104, Bend, OR 97702

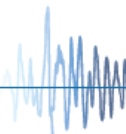
Telephone: 844.878.0200 Email: dmanwill@trucompliance.com

I hereby agree to reimburse the Office of Statewide Health Planning and Development review fees in accordance with the California Administrative Code, 2016.

Signature of Applicant:  Date: 09/07/2016

Title: Vice President Company Name: TRU Compliance, LLC

"Access to Safe, Quality Healthcare Environments that Meet California's Diverse and Dynamic Needs"





**OFFICE OF STATEWIDE HEALTH PLANNING AND DEVELOPMENT
FACILITIES DEVELOPMENT DIVISION**

California Licensed Structural Engineer Responsible for the Engineering and Test Report(s)

Company Name: TRU Compliance, LLC

Name: Derek J. Manwill, S.E. California License Number: S6266

Mailing Address: 960 SW Disk Dr., Suite 104, Bend, OR 97702

Telephone: 844.878.0200 Email: dmanwill@trucompliance.com

Supports and Attachments Preapproval

- Supports and attachments are preapproved under OPM- _____
(Separate application for OSHPD Preapproval of Manufacturer's Certification (OPM) of Supports and attachments is required)
- Supports and attachments are not preapproved

Certification Method

- Testing in accordance with: ICC-ES AC156
- Other (Please Specify): _____

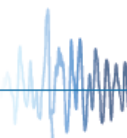
Testing Laboratory

Company Name: UC Berkeley - Pacific Earthquake Engineering Research Center (PEER)

Contact Name: Clement B. Barthes

Mailing Address: 1301 South 46th St., Bldg. 420, Richmond, CA 94804

Telephone: 510.642.3437 Email: Peer_center@berkeley.edu





**OFFICE OF STATEWIDE HEALTH PLANNING AND DEVELOPMENT
FACILITIES DEVELOPMENT DIVISION**

Seismic Parameters

Design in accordance with ASCE 7-10 Chapter 13: Yes No

Design Basis of Equipment or Components (F_p/W_p) = 0.78

S_{DS} (Design spectral response acceleration at short period, g) = 1.3

a_p (In-structure equipment or component amplification factor) = 2.5

R_p (Equipment or component response modification factor) = 2.5

Ω_0 (System overstrength factor) = 2

I_p (Importance factor) = 1.5

z/h (Height factor ratio) = 0

Equipment or Component Natural Frequencies (Hz) = See UUT1 Summary Sheet in Attachment

Overall dimensions and weight (or range thereof) = See Attachments

Equipment or Components @ grade designed in accordance with ASCE 7-10 Chapter 15: Yes No

Design Basis of Equipment or Components (V/W) = _____

S_{DS} (Design spectral response acceleration at short period, g) = _____

S_{D1} (Design spectral response acceleration at 1 second period, g) = _____

R (Response modification coefficient) = _____

Ω_0 (System overstrength factor) = _____

C_d (Deflection amplification factor) = _____

I_p (Importance factor) = 1.5

Height to Center of Gravity above base = _____

Equipment or Component Natural Frequencies (Hz) = _____

Overall dimensions and weight (or range thereof) = _____

Tank(s) designed in accordance with ASME BPVC, 2015: Yes No

List of Attachments Supporting Special Seismic Certification

Test Report(s) Drawings Calculations Manufacturer's Catalog

Other(s) (Please Specify): Attachment A

OSHPD Approval (For Office Use Only) – Approval Expires on December 31, 2022

Signature: 

Date: 9/14/2016

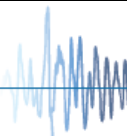
Print Name: M. R. Karim

Title: SHFR

Special Seismic Certification Valid Up to : S_{DS} (g) = 1.3

z/h = 0.0

Condition of Approval (if applicable): _____



UNIT UNDER TEST (UUT) SUMMARY SHEET

TRU PROJECT NO. 16030



<i>Manufacturer:</i>	Russell Sigler Inc.	UUT 1
<i>Model Line:</i>	16TJ	
<i>Model Number:</i>	TSA-16TJ-12E-SF	
		<i>Serial Number:</i> 81787797

Product Construction Summary:
Carbon steel construction.

Options/Subcomponent Summary:
No certified options or accessories other than specific unit configuration.

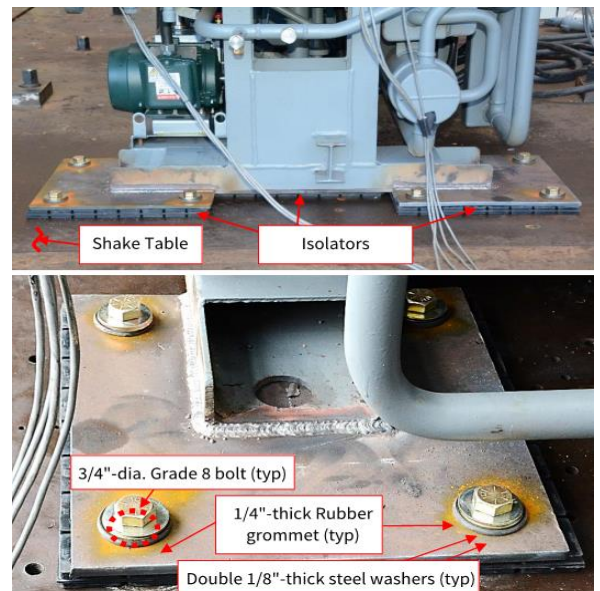
UUT Properties

Weight (lb)	Dimension (in)			Lowest Natural Frequency (Hz)		
	Depth	Width	Height	Front-Back	Side-Side	Vertical
8880	102	51	86	5.8	9.6	6.2

UUT Highest Passed Seismic Run Information

Building Code	Test Criteria	S_{DS} (g)	z/h	I_p	A_{FLX-H} (g)	A_{RIG-H} (g)	A_{FLX-V} (g)	A_{RIG-V} (g)
CBC 2016	ICC-ES AC156	1.3	0.0	1.5	1.30	0.52	0.87	0.35

Test Mounting Details:



Base mounted on (4) 12x16x3/8" A36 steel plates with 22" of 3/16" fillet weld each. Base plates and channel are fully supported by Vibrex ISOCUBE 3/4" thick neoprene pads. Base plates are anchored using (4) 3/4" Grade 8 bolts each. Unit maintained structural integrity and remained functional per manufacturer requirement. Contents were included in testing per operating conditions.