



**DEPARTMENT OF HEALTH CARE ACCESS AND INFORMATION
OFFICE OF STATEWIDE HOSPITAL PLANNING AND DEVELOPMENT**

**APPLICATION FOR HCAI SPECIAL SEISMIC
CERTIFICATION PREAPPROVAL (OSP)**

OFFICE USE ONLY

APPLICATION #: OSP-0537

HCAI Special Seismic Certification Preapproval (OSP)

Type: New Renewal

Manufacturer Information

Manufacturer: Mitsubishi Electric US

Manufacturer's Technical Representative: Jeremy Tidd

Mailing Address: 1240 Satellite Blvd., Suwanee, GA 30024

Telephone: (770) 685-7387

Email: jtidd@hvac.mea.com

Product Information

Product Name: Air Conditioning Units

Product Model Number(s): Varies, see product table

Product Category: Air Conditioning Units

Product Sub-Category: Air Conditioning Units - Split

General Description: HVAC equipment including outdoor units, indoor units, and system branch controllers.

Mounting Description: Several - See Certified Product Tables

Tested Seismic Enhancements: Seismic enhancements made to the test units and/or modifications required to address anomalies during the tests shall be incorporated into the production units.

Applicant Information

Applicant Company Name: Pre Compliance

Contact Person: Katie Braman

Mailing Address: 36 Sw Wall St, Bend, OR 97702

Telephone: (541) 241-2310

Email: Katie@go-pre.com

Title: Principal & Program Manager





**DEPARTMENT OF HEALTH CARE ACCESS AND INFORMATION
OFFICE OF STATEWIDE HOSPITAL PLANNING AND DEVELOPMENT**

California Licensed Structural Engineer Responsible for the Engineering and Test Report(s)

Company Name: PRE COMPLIANCE
Name: Andrew Coughlin California License Number: S6082
Mailing Address: 324 NW Hill St, Bend, OR 97703
Telephone: (415) 635-8461 Email: Andy@go-pre.com

Certification Method

GR-63-Core ICC-ES AC156 IEEE 344 IEEE 693 NEBS 3
 Other (Please Specify): _____

Testing Laboratory

Company Name: ENVIRONMENTAL TESTING LABORATORIES, INC. (ETL)
Contact Person: Jeremy Lange
Mailing Address: 11034 Indian Trail, Dallas TX 75229-3513
Telephone: (972) 247-9657 Email: jeremy@etldallas.com

Company Name: UNIVERSITY OF CALIFORNIA, BERKELEY (PEER)
Contact Person: Amarnath Kasalanati
Mailing Address: 325 Davis Hall, Berkeley CA 94720-1729
Telephone: (510) 642-3437 Email: amarnath1@berkeley.edu

Company Name: QUALTECH/CURTISS WRIGHT/TRENTEC
Contact Person: Adrienne Myers
Mailing Address: 4600 East Tech Drive, Cincinnati OH 45245
Telephone: (513) 528-7900 Email: amyers@curtisswright.com





**DEPARTMENT OF HEALTH CARE ACCESS AND INFORMATION
OFFICE OF STATEWIDE HOSPITAL PLANNING AND DEVELOPMENT**

Seismic Parameters

Certified Response Spectral Acceleration Factors:(F_p/W_p)

Horizontal (A Flx-H), $g = \underline{3.20}$ (A Rig-H), $g = \underline{2.15}$
 Vertical (A Flx-V), $g = \underline{1.41}$ (A Rig-V), $g = \underline{0.56}$

SDS (Design spectral response acceleration at short period, g) = 2.00 at $z/h = 1$, 2.11 at $z/h = 0$

H_f (Force amplification height factor) = 1 @ $z/h = 0$; 3.5 @ $z/h = 1$

R_u (Structure ductility reduction factor) = 1 @ $z/h = 0$; 1.3 @ $z/h = 1$

I_p (Importance factor) = 1.5

z/h (Height ratio factor) = 0 and 1

HCAI Approval (For Office Use Only) - Approval Expires on 03/17/2032

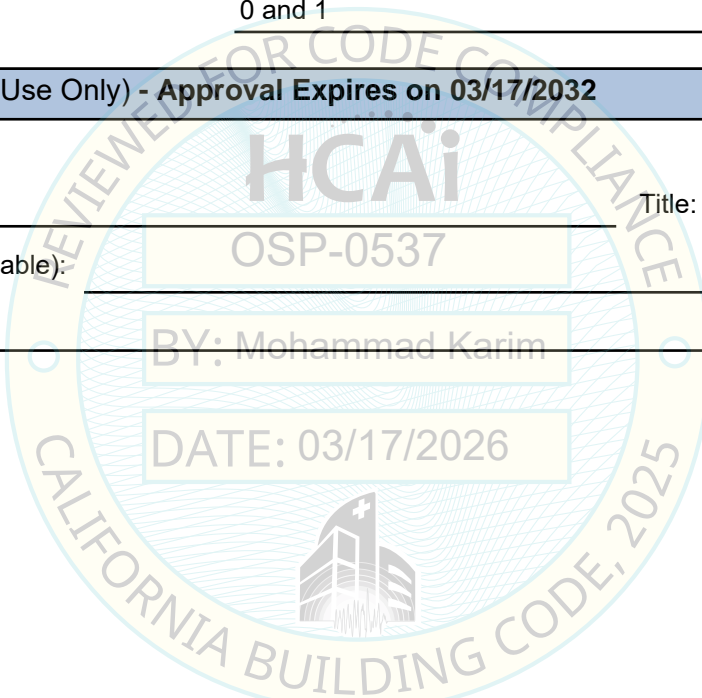
Date: 3/17/2026

Name: Mohammad Karim Title: Supervisor, Health Facilities

Condition of Approval (if applicable): OSP-0537

BY: Mohammad Karim

DATE: 03/17/2026





SPECIAL SEISMIC CERTIFICATION CERTIFIED COMPONENTS

Pre No. CC231014-01-R2

Manufacturer: Mitsubishi Electric Corporation
Product Type: Air Conditioning Units – Split
Model Line: P-Type, S-Type, City Multi Outdoor

Seismic Parameters
 $S_{DS} = 2.00g$ for $z/h=1, R_{\mu}=1.3, H_f=3.5$
 $S_{DS} = 2.11g$ for $z/h=0, R_{\mu}=1.0, H_f=1.0$ $I_p=1.5$

Building Codes
CBC 2025

TABLE 1

Mounting Configuration: Base Mounted - Rigid

Construction Summary

Carbon Steel Cabinet
Construction

Options Summary

PUZ and PUY: Single Phase, 60Hz, 208/230V; Heat pump or cooling only. PUMY, TUMY, MXZ: Three Phase, 60Hz, 208/230V or 460V. Products ending in -BS(Mitsubishi) & -AB(Trane) are not included in tables, but are acceptable for installations as additional letter denotes corrosion resistant coating on coils which does not affect the mass of the unit.

Model Line	Model	Max. Dimensions (in)			Wt. (lb)	Notes	UUT
		D	W	H			
PUZ Outdoor Heat Pump (P-Type) ^{1,2} 24,000 - 42,000 BTU/H	PUZ-A12NKA7	11.6	31.5	23.6	90		1
	PUZ-A12	11.6	31.5	23.6	90	TRUZA012 ASUZA012	Interp.
	PUZ-A18 ³	11.8	31.9	24.8	99	TRUZA018 ASUZA018	Interp.
	PUZ-A24 ³	13	37.4	37.1	151	TRUZA024 ASUZA024	Interp.
	PUZ-A30 ³	13	37.4	37.1	151	TRUZA030 ASUZA030	Interp.
	PUZ-A36 ³	13	37.4	53.2	258	TRUZA036 ASUZA036	Interp.
	PUZ-A36NKA7 ^{3,4}	13	37.4	53.2	258		2
	PUZ-A42 ^{3,4}	13	41.3	52.7	258	TRUZA042 ASUZA042	Extrap.

Notes:
¹Alternate "TR" model number for Trane branded product line. Unit is identical.
²Alternate "AS" model number for American Standard branded product line. Unit is identical.
³Requires seismic enhancement: (1) additional 1/8" x 16.5" x 1" carbon steel flat bar attached to unit with (3) #12-3/4" screws and (1) #14 - 3/4" screw is to be attached above foot.
⁴PUZ-A36NKA7 and PUZ-A42NKA7 vary only in software.

Manufacturer: Mitsubishi Electric Corporation
Product Type: Air Conditioning Units – Split
Model Line: P-Type, S-Type, City Multi Outdoor

Seismic Parameters
 $S_{DS} = 2.00g$ for $z/h=1, R_{\mu}=1.3, H_f=3.5$
 $S_{DS} = 2.11g$ for $z/h=0, R_{\mu}=1.0, H_f=1.0$ $I_p=1.5$

Building Codes
CBC 2025

TABLE 1

Mounting Configuration: Base Mounted - Rigid

Construction Summary

Carbon Steel Cabinet
Construction

Options Summary

PUZ and PUY: Single Phase, 60Hz, 208/230V; Heat pump or cooling only. PUMY, TUMY, MXZ: Three Phase, 60Hz, 208/230V or 460V. Products ending in -BS(Mitsubishi) & -AB(Trane) are not included in tables, but are acceptable for installations as additional letter denotes corrosion resistant coating on coils which does not affect the mass of the unit.

Model Line	Model	Max. Dimensions (in)			Wt. (lb)	Notes	UUT
		D	W	H			
PUZ & SUZ ¹ Outdoor Heat Pump (NL-Type) 24,000 - 60,000 BTU/H	SUZ-AA12NL	11.3	31.5	24.8	99		Extrap.
	PUZ-AK12NL	11.3	31.5	24.8	99		Extrap.
	PUZ-AK18NL	11.3	31.5	24.8	99		Extrap.
	SUZ-AA24NL	14	37.4	24.8	99		Extrap.
	PUZ-AH24NL	14	41.3	52.7	231		Extrap.
	PUZ-AK24NLHZ	14	41.3	52.7	231		53
	PUZ-AH30NL	14	41.3	52.7	231		Interp.
	PUZ-AK30NLHZ	14	41.3	52.7	231		Interp.
	SUZ-AK36NL	14	41.3	52.7	224		Interp.
	PUZ-AK36NL	14	41.3	52.7	224		Interp.
	SUZ-AK36NLHZ	14	41.3	52.7	231		Interp.
	PUZ-AK36NLHZ	14	41.3	52.7	231		Interp.
	PUZ-AK42NL	14	41.3	52.7	224		Interp.
	PUZ-AK42NLHZ	14	41.3	52.7	271		Interp.
	SUZ-AK48NL	14	41.3	52.7	224		Interp.
	PUZ-AK48NL	14	41.3	52.7	224		Interp.
	SUZ-AK48NLHZ	14	41.3	52.7	270		Interp.
	PUZ-AK48NLHZ	14	41.3	52.7	270		54
SUZ-AK60NL	14	41.3	52.7	270		Interp.	
PUZ-AK60NL	14	41.3	52.7	270		55	
Ecodan Air to Water Outdoor Unit 24,000- 48,000BTU/H	WUZ-SA24NMZ	18.9	41.3	40.9	240		68
	WUZ-SA36NMZ	18.9	41.3	40.9	240		Interp.
	WUZ-SA48NMZ	18.9	41.3	40.9	253		69

Notes:

¹PUZ and SUZ models vary only in software. HZ suffix denotes hyper heat option, the same heater used in all models with the hyper heat option.

Manufacturer: Mitsubishi Electric Corporation
Product Type: Air Conditioning Units – Split
Model Line: P-Type, S-Type, City Multi Outdoor

Seismic Parameters

$S_{DS} = 2.00g$ for $z/h=1, R_{\mu}=1.3, H_f=3.5$
 $S_{DS} = 2.11g$ for $z/h=0, R_{\mu}=1.0, H_f=1.0$ $I_p=1.5$

Building Codes

CBC 2025

TABLE 1

Mounting Configuration: Base Mounted - Rigid

Construction Summary

Carbon Steel Cabinet
Construction

Options Summary

PUZ and PUY: Single Phase, 60Hz, 208/230V; Heat pump or cooling only. PUMY, TUMY, MXZ: Three Phase, 60Hz, 208/230V or 460V. Products ending in -BS(Mitsubishi) & -AB(Trane) are not included in tables, but are acceptable for installations as additional letter denotes corrosion resistant coating on coils which does not affect the mass of the unit.

Model Line	Model	Max. Dimensions (in)			Wt. (lb)	Notes	UUT
		D	W	H			
PUY ^{1,2,3} Outdoor Condensers, Cooling Only (P-Type) 12,000 - 42,000 BTU/H	PUY-A12 ⁴	11.8	31.9	24.8	92	TRUYA012 ASUYA012	Interp.
	PUY-AK12NL	11.8	33.8	24.8	99		Interp.
	PUY-A18 ⁴	11.8	31.9	24.8	99	TRUYA018 ASUYA018	Interp.
	PUY-AK18NL	11.8	33.8	24.8	99		Interp.
	PUY-A24 ⁴	13.0	37.4	37.1	151	TRUYA024 ASUYA024	Interp.
	PUY-AH24NL	14.0	37.4	37.1	155		Interp.
	PUY-A30 ⁴	13.0	37.4	37.1	151	TRUYA030 ASUYA030	Interp.
	PUY-AH30NL	14.0	37.4	37.1	155		Interp.
	PUY-A36 ⁴	13.0	41.3	52.7	258	TRUYA036 ASUYA036	Interp.
	PUY-AK36NL	14.0	41.3	52.7	224		Interp.
	PUY-A42 ⁴	13.0	41.3	52.7	258	TRUYA042 ASUYA042	Interp.
	PUY-AK42NL	14.0	41.3	52.7	224		Interp.
	PUY-AK48NL	14.0	41.3	52.7	265		Interp.
	PUY-AK60NL	14.0	41.3	52.7	265		Interp.

Notes:
¹Alternate "TR" model number for Trane branded product line. Unit is identical.
²Alternate "AS" model number for American Standard branded product line. Unit is identical.
³PUY is a depopulated PUZ unit.
⁴Requires seismic enhancement: (1) additional 1/8" x 16.5" x 1" carbon steel flat bar attached to unit with (3) #12-3/4" screws and (1) #14 - 3/4" screw is to be attached above foot.



SPECIAL SEISMIC CERTIFICATION CERTIFIED COMPONENTS

Pre No. CC231014-01-R2

Manufacturer: Mitsubishi Electric Corporation
Product Type: Air Conditioning Units – Split
Model Line: P-Type, S-Type, City Multi Outdoor

Seismic Parameters
 $S_{DS} = 2.00g$ for $z/h=1, R_{\mu}=1.3, H_f=3.5$
 $S_{DS} = 2.11g$ for $z/h=0, R_{\mu}=1.0, H_f=1.0$ $I_p=1.5$

Building Codes
CBC 2025

TABLE 1

Mounting Configuration: Base Mounted - Rigid

Construction Summary

Carbon Steel Cabinet
Construction

Options Summary

PUZ and PUY: Single Phase, 60Hz, 208/230V; Heat pump or cooling only. PUMY, TUMY, MXZ: Three Phase, 60Hz, 208/230V or 460V. Products ending in -BS(Mitsubishi) & -AB(Trane) are not included in tables, but are acceptable for installations as additional letter denotes corrosion resistant coating on coils which does not affect the mass of the unit.

Model Line	Model	Max. Dimensions (in)			Wt. (lb)	Notes	UUT
		D	W	H			
MXZ ^{1,5,6} City Multi M-Type Heat Pump Air Conditioners 36,000 - 60,000 BTU/H	MXZ-SM36NAM-U1	13	37.4	52.7	269	NTXMSM36A142	Extrap.
	MXZ-SM36NAMHZ-U1	13	41.3	52.7	277	NTXMSH36A142	Extrap.
	MXZ-SM42NAMHZ-U1	13	41.3	52.7	277	NTXMSH42A152	Extrap.
	MXZ-SM48NAMHZ-U1	13	41.3	52.7	277	NTXMSH48A152	Extrap.
	MXZ-SM48NAM-U1	13	37.4	52.7	287	NTXMSM48A182	Extrap.
	MXZ-SM60NAM-U1	13	37.4	53.2	306	NTXMSM60A182	Extrap.
MXZ ^{1,7} City Multi TAM-Type Heat Pump Air Conditioners 72,000 - 120,000 BTU/H	MXZ-SM72TAM-U1	18	41.0	65.3	431	NTXMSM72	Extrap.
	MXZ-SM96TAM-U1	18	41.0	65.3	431	NTXMSM96	Extrap.
	MXZ-SM120TAM-U1	18	41.0	65.3	431	NTXMSM120	43
MXZ City Multi NL-Type Heat Pump Air Conditioners ⁸ 24,000 - 60000 BTU/H	MXZ-SM36NL	14	41.3	52.7	250		50
	MXZ-SM36NLHZ	14	41.3	52.7	283		Interp.
	MXZ-SM42NLHZ	14	41.3	52.7	283		Interp.
	MXZ-SM48NL	14	41.3	52.7	283		Interp.
	MXZ-SM48NLHZ	14	41.3	52.7	283		52
	MXZ-SM60NL	14	41.3	52.7	278		51

Notes:

- ¹Alternate "TR" model number for Trane branded product line. Unit is identical.
- ⁵PUMY-P###NKMU1 units are same as extrapolated MXZ-SM###NAM-U1 except for software.
- ⁶PUMY-HP###NKMU1/TUMYH0##1AK41NA are identical to extrapolated MXZ-SM###NAMHZ-U1.
- ⁷MXZ-SM120TAM is same as extrapolated MXZ-SM###TAM except for software.
- ⁸HZ suffix denotes hyper heat option, the same heater used in all models with the hyper heat option.

Manufacturer: Mitsubishi Electric Corporation
Product Type: Air Conditioning Units – Split
Model Line: P-Type, S-Type, City Multi Outdoor

Seismic Parameters
 $S_{DS} = 2.00g$ for $z/h=1, R_{\mu}=1.3, H_f=3.5$
 $S_{DS} = 2.11g$ for $z/h=0, R_{\mu}=1.0, H_f=1.0$ $I_p=1.5$

Building Codes
CBC 2025

TABLE 1

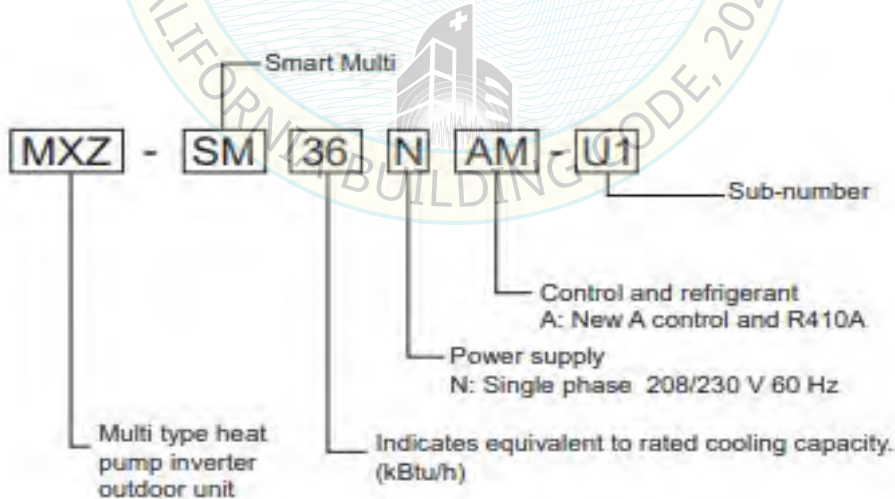
Nomenclature

FOR REFERENCE ONLY

P-Series ODU		T	R	U	Z	A	0	1	2	1	L	A	8	0	N	A
1	2	3	4	5	6	7	8	9	10	11	12	13	14	15		
Brand Name	Configuration	Unit Type	Unit Type	Capacity (Btu/h)	Capacity (Btu/h)	Capacity (Btu/h)	Capacity (Btu/h)	Voltage	Chasis Generation	Controls	Generation Code	Futhure Use	Coil Coating	Minor Design		
P = Mitsubishi TR = Trane	U:Single Outdoor	Z:Heat Pump Y: Cooling Only	A: Standard H: Hyper heat	012: 12,000 018: 18,000 024: 24,000 030: 30,000 036: 36,000 042: 42,000				0:115V, 1ph 1: 208/230V, 1ph	K: Previous Generation H: Current Generation	A: A Control	7th Generation 8th Generation		N: Standard B: BS Salt Protection	A: 1st Gen B: 2nd Gen		
		AS: American Standard														

BY: Mohammad Karim

DATE: 03/17/2026



Manufacturer: Mitsubishi Electric Corporation
Product Type: Air Conditioning Units – Split
Model Line: P-Type, S-Type, City Multi Outdoor

Seismic Parameters	
$S_{DS} = 2.00g$ for $z/h=1, R_{\mu}=1.3, H_f=3.5$	$I_p=1.5$
$S_{DS} = 2.11g$ for $z/h=0, R_{\mu}=1.0, H_f=1.0$	

Building Codes
CBC 2025

TABLE 1

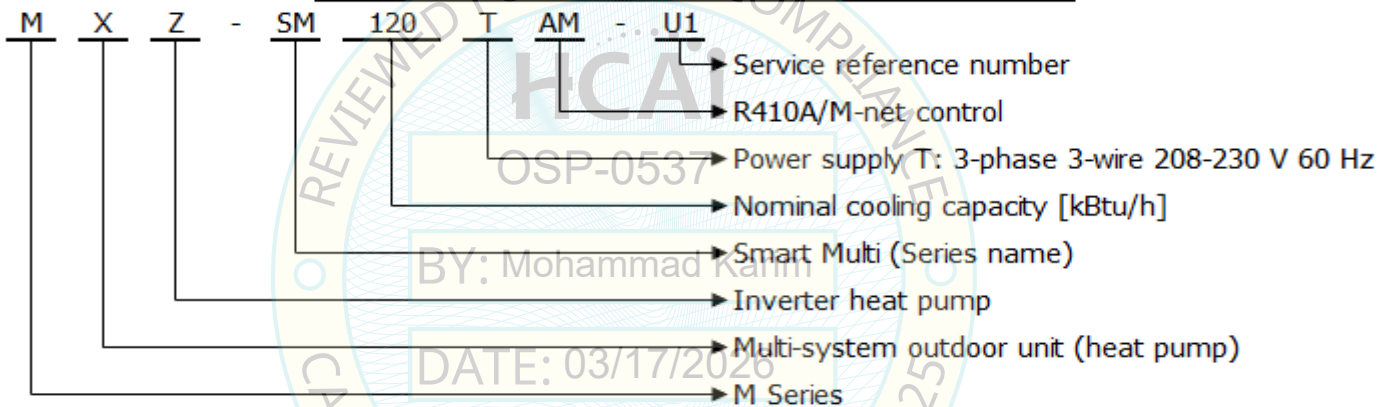
Nomenclature

FOR REFERENCE ONLY

MXZ City Multi TAM- Type Heat Pump Air Conditioners

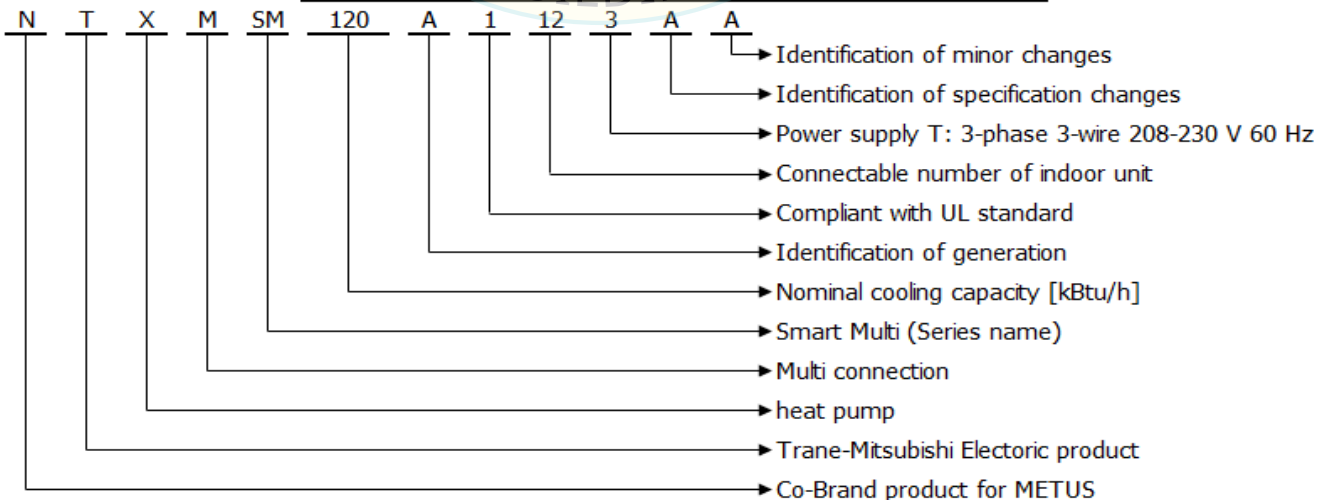
Detail of Model Name:

Mitsubishi Electric Model Nomenclature



Alternate model number for Trane branded product line. Unit is identical.

Trane/Mitsubishi Electric Model Nomenclature



Manufacturer: Mitsubishi Electric Corporation
Product Type: Air Conditioning Units – Split
Model Line: P-Type, S-Type, City Multi Outdoor

Seismic Parameters
 $S_{DS} = 2.00g$ for $z/h=1, R_{\mu}=1.3, H_f=3.5$
 $S_{DS} = 2.11g$ for $z/h=0, R_{\mu}=1.0, H_f=1.0$ $I_p=1.5$

Building Codes
CBC 2025

TABLE 1

Nomenclature

FOR REFERENCE ONLY

Model Name (City Multi Outdoor)

City Multi ODU	<u>T</u>	<u>U</u>	<u>R</u>	<u>Y</u>	<u>P</u>	<u>1</u>	<u>5</u>	<u>8</u>	<u>2</u>	<u>A</u>	<u>L</u>	<u>4</u>	<u>0</u>	<u>A</u>	<u>N</u>	
	1	2	3	4	5	6	7	8	9	10	11	12	13	14	15	
Digit #1	=	Brand Name								Digit #9	=	Voltage				
	T	Trane									3	= 208V/3P/60hz				
Digit #2	=	Configuration									4	= 460v/3P/60hz				
	U	Air Cooled									1	= 208v/1p/60hz				
	Q	Water Cooled								Digit #10	=	Modules				
Digit #3	=	Unit Type									A	= Single				
	H	Heat pump									B	= Double				
	R	Heat Recovery									C	= Triple				
	M	Single Phase HP								Digit #11	=	Generation Code				
Digit #4	=	Inverter Compressor									K	= 7th Generation				
	Y										L	= 8th Generation				
											N	= 9th Generation				
Digit #5	=	Performance								Digit #12	=	Refrigerant				
	P	Standard Efficiency									4	= R410a				
	H	Hyper Heat								Digit #13	=	Major Change				
	E	High Efficiency									0	= 1st Gen				
Digit #6,7,8	=	Capacity (Btu/h)									1	= 2nd Gen				
	072	= 72,000									2	= 3rd Gen				
	120	= 120,000								Digit #14	=	Minor Change				
	144	= 144,000									A	= 1st Gen				
	168	= 168,000									B	= 2nd Gen				
	192	= 192,000								Digit #15	=	Coil Coating				
	216	= 216,000									N	= Standard no coating				
											B	= BS Salt Protection				



Manufacturer: Mitsubishi Electric Corporation
Product Type: Air Conditioning Units – Split
Model Line: P-Type, S-Type, City Multi Outdoor

Seismic Parameters **Building Codes**

$S_{DS} = 2.00g$ for $z/h=1, R_{\mu}=1.3, H_f=3.5$ $I_p=1.5$ **CBC 2025**
 $S_{DS} = 2.11g$ for $z/h=0, R_{\mu}=1.0, H_f=1.0$

TABLE 1 Nomenclature

FOR REFERENCE ONLY

M	U	Z	GX	09	N	L	H	Z	
Family	Type	Application	System series	Capacity	Input voltage	Refrigerant	Additional features		Generation
M = M-Series mini-split S = S-Series mini-split	U = Outdoor unit	Y = Cooling only Z = Heat pump	FX GX JX HX WX AA AK	in kBTU/H	W = 115V, 1 phase N = 230V, 1 phase	L = R454B	H = Base pan heater	Z = H2i" Hyper-Heating	Blank, 2, 3, etc...

P	U	Z	AK	12	N	L	H	Z	
Family	Type	Application	Chassis Generation	Capacity	Input voltage	Refrigerant	Additional features		Generation
P = P-Series mini-split	U = Outdoor unit	Y = Cooling only Z = Heat pump	AH AK	in kBTU/H	N = 230V, 1 phase	L = R454B	H = Base pan heater	Z = H2i" Hyper-Heating	Blank, 2, 3, etc...

M	X	Z	SM	36	N	L	H	Z	
Family	Type	Application	System series	Capacity	Input voltage	Refrigerant	Additional features		Generation
M = M-series mini-split	X = Multi-zone outdoor unit	Y = Cooling only Z = Heat pump	SM	in kBTU/H	N = 230V, 1 phase T = 230V, 3 phase	L = R454B	H = Base pan heater	Z = H2i" Hyper-Heating	Blank, 2, 3, etc...

M	X	Z	2D	20	N	L	H	Z	
Family	Type	Application	Number of ports + model gen.	Capacity	Input voltage	Refrigerant	Additional features		Generation
M = M-series mini-split	X = Multi-zone outdoor unit	Z = Heat pump	2D 3D 4D 5D	in kBTU/H	N = 230V, 1 phase	L = R454B	H = Base pan heater	Z = H2i" Hyper-Heating	Blank, 2, 3, etc...



SPECIAL SEISMIC CERTIFICATION CERTIFIED COMPONENTS

Pre No. CC231014-01-R2

Manufacturer: Mitsubishi Electric Corporation
Product Type: Air Conditioning Units – Split
Model Line: P-Type, S-Type, City Multi Outdoor

Seismic Parameters
 $S_{DS} = 2.00g$ for $z/h=1, R_{\mu}=1.3, H_f=3.5$
 $S_{DS} = 2.11g$ for $z/h=0, R_{\mu}=1.0, H_f=1.0$ $I_p=1.5$

Building Codes
CBC 2025

TABLE 2

Mounting Configuration: Base Mounted - Rigid

Construction Summary

Carbon Steel Cabinet
Construction

Options Summary

PQRY, PQHY, PURY, and PUHY: 208/230V Single Phase, 208/230V 3 Phase, and 460V 3 Phase Heat Pump and Heat Recovery
 Products ending in -BS (Mitsubishi) & -AB(Trane) are not included in tables, but are acceptable for installations as additional letter denotes corrosion resistant coating on coils which does not affect the mass of the unit.

Model Line	Model	Max. Dimensions (in)			Wt. (lb)	Notes	UUT
		D	W	H			
PQRY/PQHY ^{1,2} Outdoor Heat Recovery/Heat Pump	PQRY-P72TLMU-A	21.7	34.7	43.3	380	TQRYP0723AL41AN	29
	PQRY-P72	21.7	34.7	43.3	404	TQRYP072	Interp.
	PQHY-P72	21.7	34.7	43.3	408	TQHYP072	Interp.
	PQRY-P96	21.7	34.7	43.3	380	TQRYP096	Interp.
	PQHY-P96	21.7	34.7	43.3	408	TQHYP096	Interp.
	PQRY-P120	21.7	34.7	43.3	404	TQRYP120	Interp.
	PQHY-P120	21.7	34.7	43.3	408	TQHYP120	Interp.
	PQRY-P144	21.7	34.7	57.1	505	TQRYP144	Interp.
	PQHY-P144	21.7	34.7	57.1	508	TQHYP144	Interp.
	PQRY-P168	21.7	34.7	57.1	505	TQRYP168	Interp.
	PQHY-P168	21.7	34.7	57.1	508	TQHYP168	Interp.
	PQRY-P192	21.7	34.7	57.1	505	TQRYP192	Interp.
	PQHY-P192	21.7	34.7	57.1	508	TQHYP192	Interp.
	PQRY-P216	21.7	34.7	57.1	571	TQRYP216	Interp.
	PQHY-P216	21.7	34.7	57.1	574	TQHYP216	Interp.
	PQRY-P240	21.7	34.7	57.1	571	TQRYP240	Interp.
	PQHY-P240	21.7	34.7	57.1	574	TQHYP240	Interp.
		PQHY-P240YLMU-A	21.7	34.7	57.1	574	TQHYP2404AL41AN

Notes:

¹Alternate model number for Trane branded product line. Unit is identical.

²PQRY/PQHY-P###TLMU-A are same as interpolated PQRY/PQHY-P###-A1 except for software.

Manufacturer: Mitsubishi Electric Corporation
Product Type: Air Conditioning Units – Split
Model Line: P-Type, S-Type, City Multi Outdoor

Seismic Parameters	Building Codes
$S_{DS} = 2.00g$ for $z/h=1, R_{\mu}=1.3, H_f=3.5$ $S_{DS} = 2.11g$ for $z/h=0, R_{\mu}=1.0, H_f=1.0$	$I_p=1.5$ CBC 2025

TABLE 2

Mounting Configuration: Base Mounted - Rigid

Construction Summary

Carbon Steel Cabinet Construction

Options Summary

PQRY, PQHY, PURY, and PUHY: 208/230V Single Phase, 208/230V 3 Phase, and 460V 3 Phase Heat Pump and Heat Recovery
 Products ending in -BS (Mitsubishi) & -AB(Trane) are not included in tables, but are acceptable for installations as additional letter denotes corrosion resistant coating on coils which does not affect the mass of the unit.

Model Line	Model	Max. Dimensions (in)			Wt. (lb)	Notes	UUT
		D	W	H			
PUHY/PURY ¹ Outdoor Heat Recovery Heat Pump Air Source	PUHY-P72TLMU-A	29.2	36.3	64.9	435		31
	PUHY-P72	29.2	36.3	71.6	503	TUHYP072	Interp.
	PURY-P72	29.2	36.3	71.6	516	TURYP072	Interp.
	PURY-HP72	29.2	49.3	71.0	644	TURYH072	Interp.
	PURY-EP72	29.2	36.3	71.6	552	TURYE072	Interp.
	PUHY-HP72	29.2	49.3	71.0	644	TUHYH072	Interp.
	PUHY-EP72	29.2	36.3	71.6	545	TUHYE072	Interp.
	PUHY-P96	29.2	49.3	71.0	532	TUHYP096	Interp.
	PURY-P96	29.2	36.3	71.6	611	TURYP096	Interp.
	PURY-EP96	29.2	48.8	71.6	649	TURYE096	Interp.
	PURY-HP96	29.2	48.8	71.6	697	TURYH096	Interp.
	PUHY-HP96	29.2	49.3	71.6	688	TUHYH096	Interp.
	PUHY-EP96	29.2	48.8	71.6	657	TUHYH096	Interp.
	PUHY-P120	29.2	48.8	71.6	706	TUHYP120	Interp.
	PURY-P120	29.2	48.8	65.0	633	TURYP120	Interp.
	PURY-EP120	29.2	49.9	71.6	657	TURYE120	Interp.
	PUHY-EP120	29.2	49.3	71.6	668	TUHYE120	Interp.
	PURY-HP120	29.2	49.3	71.6	697	TURYH120	Interp.
	PUHY-HP120	29.2	48.8	71.6	691	TUHYH120	Interp.
	PUHY-P144	29.2	72.5	65.0	706	TUHYP144	Interp.
PUHY-P144 ²	29.2	48.8	65.0	870	TUHYP144	Interp.	
PURY-P144	29.2	98.6	71.6	682	TURYP144	Interp.	
PURY-HP144 ²	29.2	48.9	72.6	1,228	TURYH144	Interp.	
PURY-EP144	29.2	48.9	73.6	715	TURYE144	Interp.	
PUHY-HP144	29.2	48.9	74.6	715	TUHYH144	Interp.	

Notes:
¹Alternate model number for Trane branded product lines. Unit is identical.
²Nominal capacity can be achieved by using a single module or multiple modules of smaller capacity. Unit shows option for multiple modules inline to achieve identical nominal capacity.

Manufacturer: Mitsubishi Electric Corporation
Product Type: Air Conditioning Units – Split
Model Line: P-Type, S-Type, City Multi Outdoor

Seismic Parameters	Building Codes
$S_{DS} = 2.00g$ for $z/h=1, R_{\mu}=1.3, H_f=3.5$	CBC 2025
$S_{DS} = 2.11g$ for $z/h=0, R_{\mu}=1.0, H_f=1.0$	

$I_p=1.5$

TABLE 2

Mounting Configuration: Base Mounted - Rigid

Construction Summary

Carbon Steel Cabinet Construction

Options Summary

PQRY, PQHY, PURY, and PUHY: 208/230V Single Phase, 208/230V 3 Phase, and 460V 3 Phase Heat Pump and Heat Recovery
 Products ending in -BS (Mitsubishi) & -AB(Trane) are not included in tables, but are acceptable for installations as additional letter denotes corrosion resistant coating on coils which does not affect the mass of the unit.

Model Line	Model	Max. Dimensions (in)			Wt. (lb)	Notes	UUT
		D	W	H			
PUHY/PURY ¹ Outdoor Heat Recovery Heat Pump Air Source	PUHY-EP144	29.2	48.9	75.6	715	TUHYE144	Interp.
	PUHY-P168	29.2	68.9	65.0	743	TUHYP168	Interp.
	PURY-P168YLMU-A	29.2	65.0	68.9	702		32
	PURY-P168	29.2	68.9	71.6	774	TURYP168	Interp.
	PURY-EP168	29.2	68.9	71.6	807	TURYE168	Interp.
	PUHY-EP168TNU-A	29.2	68.9	71.6	741		33
	PUHY-P192 ²	29.2	105.1	65.0	1,174	TUHYP192	Interp.
	PURY-P192 ²	29.2	97.8	71.6	1,222	TURYP192	Interp.
	PUHY-HP192	29.2	68.9	71.6	745	TUHYH192	Interp.
	PUHY-HP192 ²	29.2	98.6	71.6	1,376	TUHYH192	Interp.
	PURY-HP192	29.2	68.9	71.6	745	TURYH192	Interp.
	PURY-EP192	29.2	68.9	71.6	873	TURYE192	Interp.
	PURY-EP192 ²	29.2	97.8	71.6	1,298	TURYE192	Interp.
	PUHY-EP192	29.2	68.9	71.6	745	TUHYE192	Interp.
	PUHY-EP192TNU-A	29.2	68.9	71.6	745		34
	PUHY-EP192 ²	29.2	97.8	71.6	1,314	TUHYE192	Interp.
	PUHY-P216 ²	29.2	117	65.0	1,238	TUHYP216	Interp.
	PURY-P216 ²	29.2	97.8	71.6	1,244	TURYP216	Interp.
	PUHY-EP216	29.2	68.9	71.6	904	TUHYE216	Interp.
	PUHY-EP216 ²	29.2	97.8	71.6	1,325	TUHYE216	Interp.
	PURY-EP216	29.2	68.9	71.6	873	TURYE216	Interp.
	PURY-EP216	29.2	97.8	71.6	1,306	TURYE216	Interp.
	PUHY-P240 ²	29.2	137.8	65.0	1,412	TUHYP240	Interp.
	PURY-P240 ²	29.2	97.8	71.6	1,266	TURYP240	Interp.
PUHY-HP240 ²	29.2	98.6	71.6	1,382	TUHYH240	Interp.	

Notes:
¹Alternate model number for Trane branded product lines. Unit is identical.
²Nominal capacity can be achieved by using a single module or multiple modules of smaller capacity. Unit shows option for multiple modules inline to achieve identical nominal capacity.

Manufacturer: Mitsubishi Electric Corporation
Product Type: Air Conditioning Units – Split
Model Line: P-Type, S-Type, City Multi Outdoor

Seismic Parameters	Building Codes
$S_{DS} = 2.00g$ for $z/h=1, R_{\mu}=1.3, H_f=3.5$ $S_{DS} = 2.11g$ for $z/h=0, R_{\mu}=1.0, H_f=1.0$	$I_p=1.5$ CBC 2025

TABLE 2

Mounting Configuration: Base Mounted - Rigid

Construction Summary

Carbon Steel Cabinet Construction

Options Summary

PQRY, PQHY, PURY, and PUHY: 208/230V Single Phase, 208/230V 3 Phase, and 460V 3 Phase Heat Pump and Heat Recovery
 Products ending in -BS (Mitsubishi) & -AB(Trane) are not included in tables, but are acceptable for installations as additional letter denotes corrosion resistant coating on coils which does not affect the mass of the unit.

Model Line	Model	Max. Dimensions (in)			Wt. (lb)	Notes	UUT
		D	W	H			
PUHY/PURY ¹ Outdoor Heat Recovery Heat Pump Air Source	PURY-HP240 ²	29.2	98.6	71.6	1,394	TURYH240	Interp.
	PUHY-EP240	29.2	68.9	71.6	904	TUHYE240	Interp.
	PUHY-EP240 ²	29.2	97.8	71.6	1,336	TUHYE240	Interp.
	PURY-EP240	29.2	68.9	71.6	873	TURYE240	Interp.
	PURY-EP240TNU-A	29.2	68.9	71.6	873		38
	PURY-EP240 ²	29.2	97.8	71.6	1,314	TURYE240	Interp.
	PUHY-EP240YNU-A	29.2	68.9	71.6	887		39
	PUHY-P264 ²	29.2	141.1	65.0	1,642	TUHYP264	Interp.
	PURY-P264 ²	29.2	97.8	71.6	1,315	TURYP264	Interp.
	PUHY-EP264 ²	29.2	134	71.6	1,859	TUHYE264	Interp.
	PURY-EP264 ²	29.2	97.8	71.6	1,372	TURYE264	Interp.
	PUHY-P288 ²	29.2	153.3	71.6	1,706	TUHYP288	Interp.
	PURY-P288 ²	29.2	97.8	71.6	1,364	TURYP288	Interp.
	PUHY-EP288 ²	29.2	134	71.6	1,870	TUHYE288	Interp.
	PURY-EP288 ²	29.2	97.8	71.6	1,430	TURYE288	Interp.
	PUHY-P312 ²	29.2	174	65.0	1,880	TUHYP312	Interp.
	PURY-P312 ²	29.2	117.7	71.6	1,456	TURYP312	Interp.
	PUHY-EP312 ²	29.2	134	71.6	1,881	TUHYE312	Interp.
	PURY-EP312 ²	29.2	117.7	71.6	1,522	TURYE312	Interp.
	PUHY-P336 ²	29.2	174	65.0	1,899	TUHYP336	Interp.
	PURY-P336 ²	29.2	137.8	71.6	1,548	TURYP336	Interp.
	PUHY-EP336 ²	29.2	146.6	71.6	1,993	TUHYE336	Interp.
	PURY-EP336 ²	29.2	137.8	71.6	1,614	TURYE336	Interp.
	PUHY-EP360 ²	29.2	146.6	71.6	2,004	TUHYE360	Interp.
PUHY-P360 ²	29.2	206.7	71.6	2,118	TUHYP360	Interp.	

Notes:
¹Alternate model number for Trane branded product lines. Unit is identical.
²Nominal capacity can be achieved by using a single module or multiple modules of smaller capacity. Unit shows option for multiple modules inline to achieve identical nominal capacity.

Manufacturer: Mitsubishi Electric Corporation
Product Type: Air Conditioning Units – Split
Model Line: P-Type, S-Type, City Multi Outdoor

Seismic Parameters
 $S_{DS} = 2.00g$ for $z/h=1, R_{\mu}=1.3, H_f=3.5$
 $S_{DS} = 2.11g$ for $z/h=0, R_{\mu}=1.0, H_f=1.0$ $I_p=1.5$

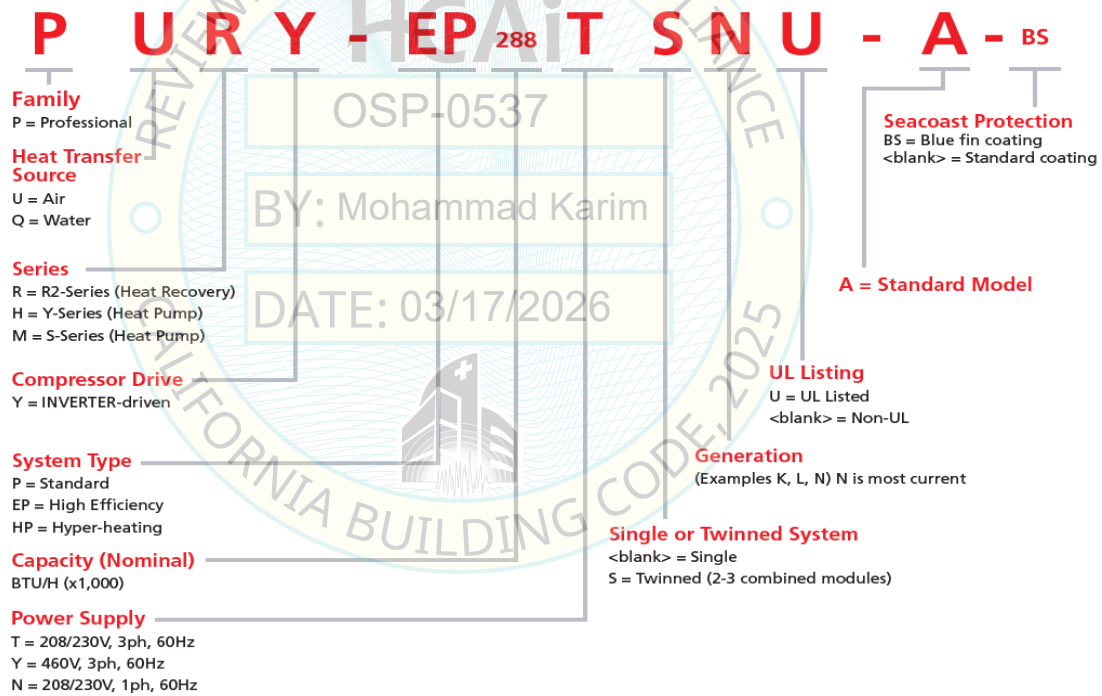
Building Codes
CBC 2025

TABLE 2

Nomenclature

FOR REFERENCE ONLY

CITY MULTI® Outdoor Unit Model Number Reference Guide



Note: A to A1 designates tuning to meet AHRI 12-30-21 for capacity of EP72-EP168, units are identical.

Manufacturer: Mitsubishi Electric Corporation
Product Type: Air Conditioning Units – Split
Model Line: P-Type, S-Type, City Multi Outdoor

Seismic Parameters
 $S_{DS} = 2.00g$ for $z/h=1, R_{\mu}=1.3, H_f=3.5$
 $S_{DS} = 2.11g$ for $z/h=0, R_{\mu}=1.0, H_f=1.0$ $I_p=1.5$

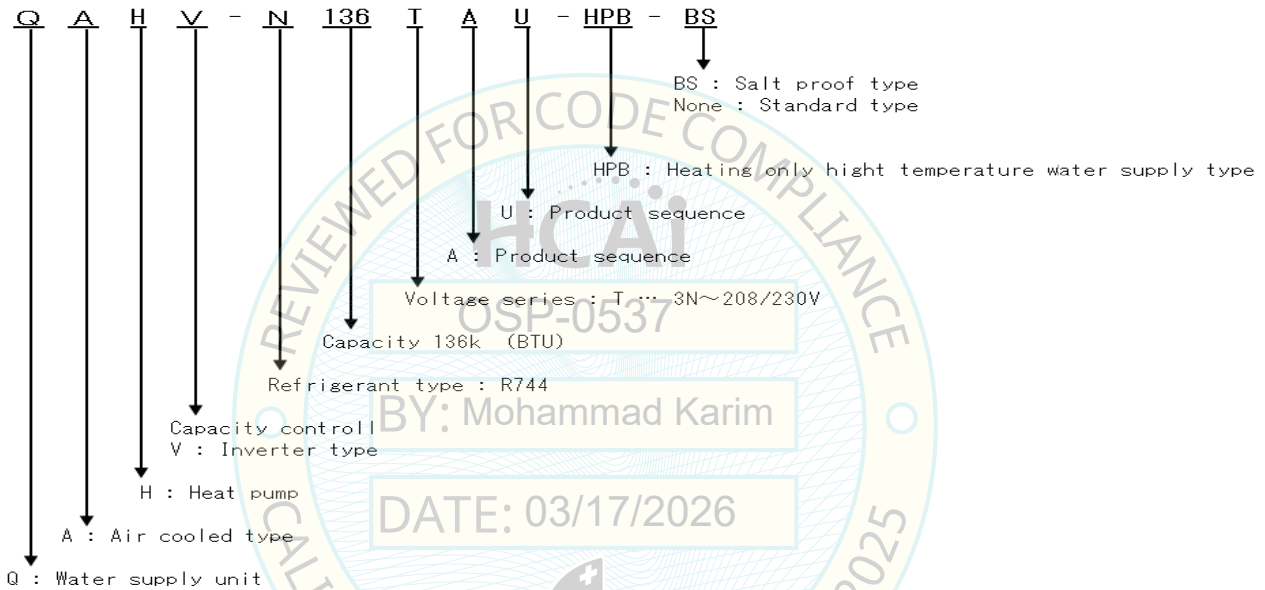
Building Codes
CBC 2025

TABLE 2

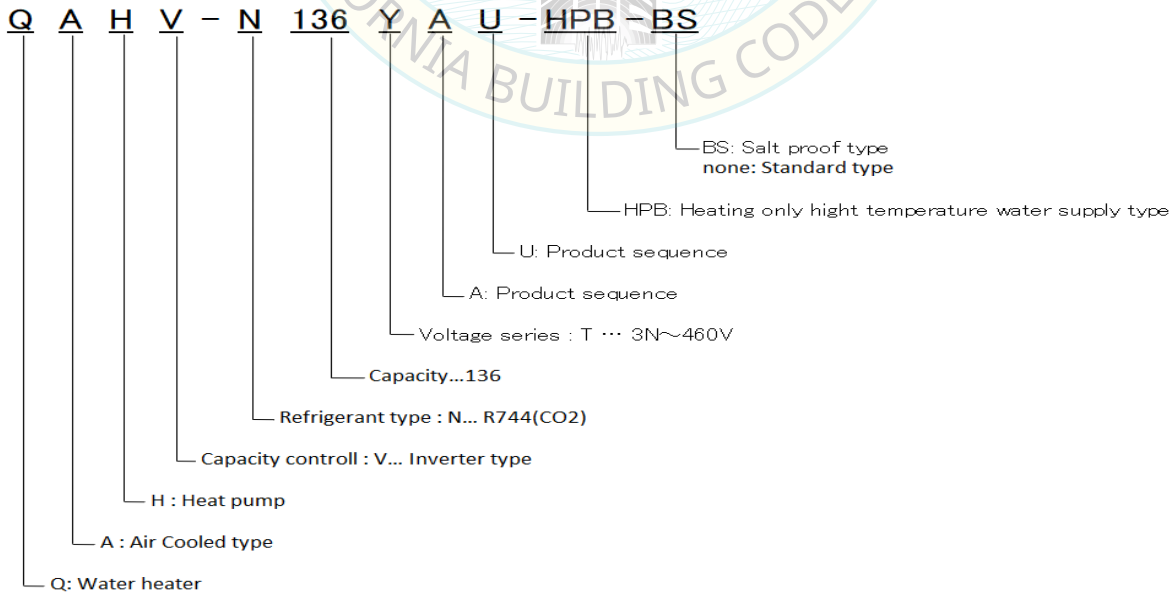
Nomenclature

FOR REFERENCE ONLY

1. Explanation of model name [Detail of model name]



2. Model Name





SPECIAL SEISMIC CERTIFICATION CERTIFIED COMPONENTS

Pre No. CC231014-01-R2

Manufacturer: Mitsubishi Electric Corporation
Product Type: Air Conditioning Units – Split
Model Line: P-Type, S-Type, City Multi Outdoor

Seismic Parameters
 $S_{DS} = 2.00g$ for $z/h=1, R_{\mu}=1.3, H_f=3.5$
 $S_{DS} = 2.11g$ for $z/h=0, R_{\mu}=1.0, H_f=1.0$ $I_p=1.5$

Building Codes
CBC 2025

TABLE 2

Nomenclature

FOR REFERENCE ONLY

P	K	A	AL	12	N	L	
Family	Type	Application	System series	Capacity	Input voltage	Refrigerant	Generation
P = P-Series mini-split	K = Wall-mounted	A = Indoor unit	AA AE AK AL	in kBTU/H	N = 230V, 1 phase	L = R454B	Blank, 2, 3, etc...
	E = Horizontal Ducted	AD = Horizontal-ducted indoor unit (PEAD)	AA/BA/CA (intelli-HEAT*)				
	C = Floor-mounted						
	L = Ceiling Cassette						
	V = Multi-position Air Handler						
A = intelli-HEAT*							

Manufacturer: Mitsubishi Electric Corporation
Product Type: Air Conditioning Units – Split
Model Line: P-Type, S-Type, City Multi Outdoor

Seismic Parameters **Building Codes**

$S_{DS} = 2.00g$ for $z/h=1, R_{\mu}=1.3, H_f=3.5$ $I_p=1.5$ **CBC 2025**
 $S_{DS} = 2.11g$ for $z/h=0, R_{\mu}=1.0, H_f=1.0$

TABLE 3 **Mounting Configuration: Ceiling Suspended - Rigid and Cable Braced**

Construction Summary

Carbon steel casing

Options Summary

PAC-SJ42TM-E multifunction casement accessory, certified for PLFY and PLA units

Model Line	Model	Max. Dimensions (in)			Wt. (lb)	Notes	UUT
		D	W	H			
PEAD Horizontal Ducted ^{1,2}	PEAD-A09	29	39.4	9	58	TPEADA009	Extrap.
	PEAD-A12	29	39.4	9	58	TPEADA012	Extrap.
	PEAD-A12AA7	29	39.4	9	58		3
	PEAD-A15	28.9	28.9	9.9	62	TPEADA015	Interp.
	PEAD-A18	28.9	28.9	9.9	62	TPEADA018	Interp.
	PEAD-A24	28.9	28.9	9.9	73	TPEADA024	Interp.
	PEAD-A30	28.9	28.9	9.9	73	TPEADA030	Interp.
	PEAD-A36	28.9	28.9	9.9	91	TPEADA036	Interp.
	PEAD-A42A	29	59	14	91	TPEADA042	Interp.
	PEAD-A42AA7	29	59	14	91		4
PEAD-AA Horizontal Ducted ³	PEAD-AA09NL	28.9	35.4	9.9	58		58
	PEAD-AA15NL	28.9	35.4	9.9	60		Interp.
	PEAD-AA18NL	28.9	35.4	9.9	60		Interp.
	PEAD-AA24NL	28.9	43.3	9.9	67		Interp.
	PEAD-AA30NL	28.9	43.3	9.9	67		Interp.
	PEAD-AA36NL	28.9	55.2	9.9	82		Interp.
	PEAD-AA42NL	28.9	55.2	9.9	86		59
PMFY Indoor Ceiling Cassette 1-Way ²	PMFY-P06NBMU-E	32.0	15.6	9.2	38		15
	PMFY-P06	32.0	15.6	9.2	38	TPMFYP006	Interp.
	PMFY-P08	32.0	15.6	9.2	38	TPMFYP008	Interp.
	PMFY-P12	32.0	15.6	9.2	38	TPMFYP012	Interp.
	PMFY-P15	32.0	15.6	9.2	38	TPMFYP015	Interp.
	PMFY-P15NBMU-E	32.0	15.6	9.2	38		16

¹Requires seismic enhancements: (4) #12 self-tapping screws, (1) #14 self-tapping screw, and (1) additional washer in each mounting bracket.

²Alternate "TR" model number for Trane branded product line. Unit is identical.

³Requires seismic enhancements: (4) #14-3/4" self-tapping screws in each mounting bracket.



SPECIAL SEISMIC CERTIFICATION CERTIFIED COMPONENTS

Pre No. CC231014-01-R2

Manufacturer: Mitsubishi Electric Corporation
Product Type: Air Conditioning Units – Split
Model Line: P-Type, S-Type, City Multi Outdoor

Seismic Parameters
 $S_{DS} = 2.00g$ for $z/h=1, R_{\mu}=1.3, H_f=3.5$
 $S_{DS} = 2.11g$ for $z/h=0, R_{\mu}=1.0, H_f=1.0$ $I_p=1.5$

Building Codes
CBC 2025

TABLE 3

Mounting Configuration: Ceiling Suspended - Rigid and Cable Braced

Construction Summary

Carbon steel casing

Options Summary

PAC-SJ42TM-E multifunction casement accessory, certified for PLFY and PLA units

Model Line	Model	Max. Dimensions (in)			Wt. (lb)	Notes	UUT
		D	W	H			
PLFY Indoor Ceiling Cassette 4-Way ¹	PLFY-P05	22.4	22.4	8.2	42	TPLFYP005	Extrap.
	PLFY-EP06	33.1	33.1	10.2	46	TPLFYP006E	Extrap.
	PLFY-P08	22.4	22.4	8.2	42	TPLFYP008F	Extrap.
	PLFY-EP08	33.1	33.1	10.2	46	TPLFYP008E	Extrap.
	PLFY-P12NBMU-E	33.1	33.1	10.2	49		17
	PLFY-P12NFMU-E	22.4	22.4	8.2	76	UUT: Tested with PAC-SJ41TM-E accessory	12
	PLFY-P12	33.1	33.1	10.2	46	TPLFYP012F	Interp.
	PLFY-EP12	33.1	33.1	10.2	46	TPLFYP012E	Interp.
	PLFY-P15	22.4	22.4	8.2	42	TPLFYP015F	Interp.
	PLFY-EP15	33.1	33.1	10.2	46	TPLFYP015E	Interp.
	PLFY-P18	22.4	22.4	8.2	42	TPLFYP018F	Interp.
	PLFY-EP18	33.1	33.1	10.2	46	TPLFYP018E	Interp.
	PLFY-P24	22.4	22.4	8.2	46		Interp.
	PLFY-EP24	33.1	33.1	11.8	55	TPLFYP024E	Interp.
	PLFY-P30	22.4	22.4	8.2	51		Interp.
	PLFY-EP30	33.1	33.1	11.8	55	TPLFYP030E	Interp.
	PLFY-P36	22.4	22.4	8.2	51		Interp.
	PLFY-EP36	33.1	33.1	11.8	55	TPLFYP036E	Interp.
	PLFY-EP48	22.4	22.4	8.2	55	TPLFYP048E	Interp.
	PLFY-P48	33.1	33.1	11.8	55		Interp.
PLFY-P48NEMU-E	33.1	33.1	11.8	55	UUT: 60 lb with PLP40EAU Grill	18	

¹Alternate "TR" model number for Trane branded product line. Unit is identical.

Manufacturer: Mitsubishi Electric Corporation
Product Type: Air Conditioning Units – Split
Model Line: P-Type, S-Type, City Multi Outdoor

Seismic Parameters	Building Codes
$S_{DS} = 2.00g$ for $z/h=1, R_{\mu}=1.3, H_f=3.5$ $S_{DS} = 2.11g$ for $z/h=0, R_{\mu}=1.0, H_f=1.0$	$I_p=1.5$ CBC 2025

TABLE 3 Mounting Configuration: Ceiling Suspended - Rigid and Cable Braced

Construction Summary

Carbon steel casing

Options Summary

PAC-SJ42TM-E multifunction casement accessory, certified for PLFY and PLA units

Model Line	Model	Max. Dimensions (in)			Wt. (lb)	Notes	UUT
		D	W	H			
PLA Indoor Ceiling Cassette 4-Way ^{1,2,3,4}	PLA-A12	33.1	33.1	10.2	49	TPLA0A012 APLA0A012	Interp.
	PLA-AE12NL	33.1	33.1	10.2	49		Interp.
	PLA-A18	33.1	33.1	10.2	49	TPLA0A018 APLA0A018	Interp.
	PLA-AE18NL	33.1	33.1	10.2	49		Interp.
	PLA-A24	33.1	33.1	10.2	51	TPLA0A024 APLA0A024	Interp.
	PLA-AE24NL	33.1	33.1	11.8	57		Interp.
	PLA-A30	33.1	33.1	10.2	51	TPLA0A030 APLA0A030	Interp.
	PLA-AE24NL	33.1	33.1	11.8	57		Interp.
	PLA-A36	33.1	33.1	11.8	55	TPLA0A036 APLA0A036	Interp.
	PLA-AE36NL	33.1	33.1	11.8	57		Interp.
	PLA-A42	33.1	33.1	11.8	55	TPLA0A042 APLA0A042	Interp.
	PLA-A42BA	33.1	33.1	11.8	55		19
	PLA-AE42NL	33.1	33.1	11.8	57		Interp.
	PLA-AE48NL	33.1	33.1	11.8	62	UUT weight includes decorative cover	60

¹Alternate "TR" model number for Trane branded product line. Unit is identical.
²Alternate "AS" model number for American Standard branded product line. Unit is identical.
³PLFY equivalent to interpolated PLA except for software and branding.
⁴PLA-AE###NL, identical to PLA-A## other than software and addition of refrigerant leak sensor. Sensor identical in all capacities.

Manufacturer: Mitsubishi Electric Corporation
Product Type: Air Conditioning Units – Split
Model Line: P-Type, S-Type, City Multi Outdoor

Seismic Parameters

$S_{DS} = 2.00g$ for $z/h=1, R_{\mu}=1.3, H_f=3.5$
 $S_{DS} = 2.11g$ for $z/h=0, R_{\mu}=1.0, H_f=1.0$ $I_p=1.5$

Building Codes

CBC 2025

TABLE 3 **Mounting Configuration: Ceiling Suspended - Rigid and Cable Braced**

Construction Summary

Carbon steel casing

Options Summary

PAC-SJ42TM-E multifunction casement accessory, certified for PLFY and PLA units

Model Line	Model	Max. Dimensions (in)			Wt. (lb)	Notes	UUT
		D	W	H			
PEFY-WL Indoor Concealed ¹	PEFY-WL06NMAU-A	28.8	27.6	9.8	48		48
	PEFY-WL06NMAU-A	28.8	27.6	9.8	48	TPEFYW006	Interp.
	PEFY-WL08	28.8	31.5	9.8	48	TPEFYW008	Interp.
	PEFY-WL12	28.8	31.5	9.8	48	TPEFYW012	Interp.
	PEFY-WL15	28.8	35.6	9.8	55	TPEFYW015	Interp.
	PEFY-WL18	28.8	43.4	9.8	67	TPEFYW018	Interp.
	PEFY-WL24	28.8	43.4	9.8	67	TPEFYW024	Interp.
	PEFY-WL27	28.8	43.4	9.8	67	TPEFYW027	Interp.
	PEFY-WL30	28.8	43.4	9.8	67	TPEFYW030	Interp.
	PEFY-WL36	28.8	55.1	9.8	82	TPEFYW036	Interp.
	PEFY-WL48	28.8	63.0	9.8	96	TPEFYW048	Interp.
	PEFY-WL48NMAU-A	28.8	63.0	9.8	96		49
	PVA/PVfy ^{1,2,3}	PVfy-P12AMU-E	50.3	17.0	21.6	117	Tested with heater accessory
PVfy-P12		50.3	17.0	21.6	113	TPVfyP012	Interp.
PVfy-L12		50.3	17.0	21.6	113		Interp.
PVA-A12		50.3	17.0	21.6	113	TPVA0A012 APVA0A012	Interp.
PVA-AA12		50.3	17.0	21.6	113		Interp.
PVfy-P18		50.3	17.0	21.6	113	TPVfyP018	Interp.
PVfy-L18		50.3	17.0	21.6	113		Interp.
PVA-A18		50.3	17.0	21.6	113	TPVA0A018 APVA0A018	Interp.
PVA-AA18		50.3	17.0	21.6	113		Interp.
PVfy-P24		50.3	17.0	21.6	141	TPVfyP024	Interp.
PVfy-L24		50.3	17.0	21.6	141		Interp.

¹Alternate "TR" model number for Trane branded product line. Unit is identical.
²Alternate "AS" model number for American Standard branded product line. Unit is identical.
³PVfy-L##, identical to PVfy-P other than software and addition of refrigerant leak sensor. Sensor identical in all capacities.

Manufacturer: Mitsubishi Electric Corporation
Product Type: Air Conditioning Units – Split
Model Line: P-Type, S-Type, City Multi Outdoor

Seismic Parameters	Building Codes
$S_{DS} = 2.00g$ for $z/h=1, R_{\mu}=1.3, H_f=3.5$ $S_{DS} = 2.11g$ for $z/h=0, R_{\mu}=1.0, H_f=1.0$	$I_p=1.5$ CBC 2025

TABLE 3 Mounting Configuration: Ceiling Suspended - Rigid and Cable Braced

Construction Summary

Carbon steel casing

Options Summary

PAC-SJ42TM-E multifunction casement accessory, certified for PLFY and PLA units

Model Line	Model	Max. Dimensions (in)			Wt. (lb)	Notes	UUT
		D	W	H			
PVA/PV FY ^{1,2}	PVA-A24	54.3	21.0	21.6	141	TPVA0A024 APVA0A024	Interp.
	PVA-AA24	54.3	21.0	21.6	141		Interp.
	PV FY-P30	54.3	21.0	21.3	141	TPV FY P030	Interp.
	PV FY-L30	54.3	21.0	21.3	141		Interp.
	PVA-A30	54.3	21.0	21.6	141	TPVA0A030 APVA0A030	Interp.
	PVA-AA30	54.3	21.0	21.6	141		Interp.
	PV FY-P36	50.3	17.0	21.6	141	TPV FY P024	Interp.
	PV FY-L36	50.3	17.0	21.6	141		Interp.
	PVA-A36	54.3	21.0	21.6	172	TPVA0A024 APVA0A024	Interp.
	PVA-AA36	54.3	21.0	21.6	172		Interp.
	PVA-A42	54.3	21.0	21.6	172	TPVA0A030 APVA0A030	Interp.
	PVA-AA42	54.3	21.0	21.6	172		Interp.
	PV FY-L42	59.5	25.0	21.6	172		Interp.
	PV FY-P48	59.5	25.0	21.6	172	TPV FY P048	Interp.
	PV FY-L48	59.5	25.0	21.6	172		Interp.
	PVA-AA48	59.5	25.0	21.6	172		Interp.
	PV FY-P54	59.5	25.0	21.6	172	TPV FY P048	Interp.
	PV FY-L54	59.5	25.0	21.6	201.5		Interp.
	PV FY-P54NAMU-E	59.5	25.0	21.6	227	Tested with heater accessory	24
	PVA-AA60	59.5	25.0	21.6	176		Interp.
PV FY-L54NAMU	59.5	25.0	21.6	201.5	Tested with refrigerant sensor	61	

¹Alternate "TR" model number for Trane branded product line. Unit is identical.
²Alternate "AS" model number for American Standard branded product line. Unit is identical.

Manufacturer: Mitsubishi Electric Corporation
Product Type: Air Conditioning Units – Split
Model Line: P-Type, S-Type, City Multi Outdoor

Seismic Parameters	Building Codes
$S_{DS} = 2.00g$ for $z/h=1, R_{\mu}=1.3, H_f=3.5$ $S_{DS} = 2.11g$ for $z/h=0, R_{\mu}=1.0, H_f=1.0$	$I_p=1.5$ CBC 2025

TABLE 3 Mounting Configuration: Ceiling Suspended - Rigid and Cable Braced

Construction Summary

Carbon steel casing

Options Summary

PAC-SJ42TM-E multifunction casement accessory, certified for PLFY and PLA units

Model Line	Model	Max. Dimensions (in)			Wt. (lb)	Notes	UUT
		D	W	H			
PCA ^{1,2,3,4}	PCA-A24	26.8	47.5	9.1	71	TPCA0A024 APCA0A024	Extrap.
	PCA-AK24NL	26.8	47.5	9.1	71	UUT: 69.5 lb	56
	PCA-A24KA7	26.8	50.4	9.1	71		9
	PCA-A30	26.8	50.4	9.1	71	TPCA0A030 APCA0A030	Interp.
	PCA-AK30NL	26.8	50.4	9.1	71		Interp.
	PCA-A36	26.8	63.0	9.1	79	TPCA0A036 APCA0A036	Interp.
	PCA-AK36NL	26.8	63.0	9.1	88		Interp.
	PCA-A42	26.8	63.0	9.1	88	TPCA0A042 APCA0A042	Interp.
	PCA-AK42NL	26.8	63.0	9.1	88		Interp.
	PCA-A42KA7	26.8	63.0	9.1	88		37
	PCA-AK42NL	27.0	63.0	9.1	88		57
	Lossnay Energy Recovery Ventilator - RVX2	LGH-F300RVX2	40.0	34.9	13.1	75	
LGH-F380RVX2		37.6	35.8	15.9	90		Interp.
LGH-F470RVX2		39.5	45.1	15.9	110		Interp.
LGH-F600RVX2		48.5	45.1	15.9	123		Interp.
LGH-F940RVX2		39.5	45.1	31.8	225		Interp.
Lossnay Energy Recovery Ventilator - RVXT ^{1,5}	LGH-F41200RVX2	48.5	45.1	31.8	351		63
	LGH-F940RVXT	65.1	78.75	19.7	393	TLGHF0940RVXT02A	Extrap.
	LGH-F1200RVXT	65.1	78.75	19.7	393	TLGHF1200RVXT02A	Extrap.
	LGH-F1500RVXT	65.1	78.75	19.7	393	UUT: TLGHF1500RVXT02A	64

¹Alternate "TR" model number for Trane branded product line. Unit is identical.
²Alternate "AS" model number for American Standard branded product line. Unit is identical.
³Requires seismic enhancement: (3) 1/4" x 3/4" hex head self tapping screws added to each mounting bracket.
⁴PCA-AK##NL identical to PCA-A##KA7 other than software and addition of refrigerant leak sensor. Sensor identical in all capacities.
⁵Models identical other than software.

Manufacturer: Mitsubishi Electric Corporation
Product Type: Air Conditioning Units – Split
Model Line: P-Type, S-Type, City Multi Outdoor

Seismic Parameters
 $S_{DS} = 2.00g$ for $z/h=1, R_{\mu}=1.3, H_f=3.5$
 $S_{DS} = 2.11g$ for $z/h=0, R_{\mu}=1.0, H_f=1.0$ $I_p=1.5$

Building Codes
CBC 2025

TABLE 3 **Nomenclature**
FOR REFERENCE ONLY

T	R	U	Z	A	5	6	0	1	2	1	L	A	8	0	A
1	2	3	4	5	6	7	8	9	10	11	12	13	14	15	
Brand Name	Configuration	Indoor Description	Indoor Description	Indoor Description	Indoor Description	Capacity (Btu/h)	Capacity (Btu/h)	Capacity (Btu/h)	Voltage	Chasis Generation	Controls	Generation Code	Futhure Use	Minor Design	
TR = Trane AS: American St	P: P Series	KA0A: Wall Mounted CA0A: Ceiling Suspended LA0A: Cassette VA0A: Vertical Ducted EADA: Horizontal Ducted				012: 12,000 018: 18,000 024: 24,000 030: 30,000 036: 36,000 042: 42,000			0:115V, 1ph 1: 208/230V, 1ph	K: Previous Generation H: Current Generation	A: A Control	7th Generation 8th Generation	0 1	A: 1st Gen B: 2nd Gen	

Model Name (City Multi Indoor)

City Multi IDU

I **P** **K** **E** **Y** **P** **0** **2** **4** **B** **M** **1** **4** **0** **A**

1 2 3 4 5 6 7 8 9 10 11 12 13 14 15

DATE: 03/17/2026

Digit #1 = Brand Name
T = Trane

Digit #2 = Model Family
P = Packaged AC

Digit #3 = Application
K = Wall Mounted
L = Ceiling Recessed 4-way
M = Ceiling Recessed 1-way
C = Ceiling Suspended
E = Ceiling Concealed Ducted
F = Floor Standing
V = Multi-position Air Handler
W = Hydronic Heat Exchanger

Digit #4,5,6 = Unit Type
FYP = Indoor Unit

Digit #7,8,9 = Capacity (Btu/h)
006 = 6,000
008 = 8,000
012 = 12,000
015 = 15,000
018 = 18,000
024 = 24,000
027 = 27,000
030 = 30,000
036 = 36,000
048 = 48,000
054 = 54,000
072 = 72,000
096 = 96,000
120 = 1,200CFM

Digit #10,11 = Configuration
BM = Small cabinet (Wall mounted, 1 way cassette)
HM = Medium cabinet (wall mounted)
KM = Large cabinet (Wall mounted, ceiling suspended)
EM = 33" x 33"
FM = 24" x 24"
MS = Low Profile
MA = Medium Static
MH = High Static
RE = Recessed
CS = Console
AM = Air Handler
OA = All fresh type
AF = DOAS w/o Reheat
AR = DOAS with Reheat
AU = Hydro HEX unit
BU = Hydro HEX with booster

Digit #12 = Voltage
1 = 208-230v/1p/60hz

Digit #13 = Refrigerant
4 = R410a

Digit #14 = Hold for Future
0 = 1st Gen
1 = 2nd Gen
2 = 3rd Gen

Digit #15 = Minor Design Sequence
A = Original model
B = First revision
C = 2nd Revision



Manufacturer: Mitsubishi Electric Corporation
Product Type: Air Conditioning Units – Split
Model Line: P-Type, S-Type, City Multi Outdoor

Seismic Parameters
 $S_{DS} = 2.00g$ for $z/h=1, R_{\mu}=1.3, H_f=3.5$
 $S_{DS} = 2.11g$ for $z/h=0, R_{\mu}=1.0, H_f=1.0$ $I_p=1.5$

Building Codes
CBC 2025

TABLE 3 Nomenclature

FOR REFERENCE ONLY

P	K	A	AL	12	N	L	
Family	Type	Application	System series	Capacity	Input voltage	Refrigerant	Generation
P = P-Series mini-split	K = Wall-mounted	A = Indoor unit	AA AE AK AL	in kBTU/H	N = 230V, 1 phase	L = R454B	Blank, 2, 3, etc...
	E = Horizontal Ducted	AD = Horizontal-ducted indoor unit (PEAD)	AA/BA/CA (intelli-HEAT*)				
	C = Floor-mounted						
	L = Ceiling Cassette						
	V = Multi-position Air Handler						
A = intelli-HEAT*							

Manufacturer: Mitsubishi Electric Corporation
Product Type: Air Conditioning Units – Split
Model Line: P-Type, S-Type, City Multi Outdoor

Seismic Parameters
 $S_{DS} = 2.00g$ for $z/h=1, R_{\mu}=1.3, H_f=3.5$
 $S_{DS} = 2.11g$ for $z/h=0, R_{\mu}=1.0, H_f=1.0$ $I_p=1.5$

Building Codes
CBC 2025

TABLE 4

Mounting Configuration: Ceiling Suspended - Rigid and Cable Braced

Construction Summary

Carbon steel casing

Options Summary

BC Controllers: Single, Main, and Small to Large Capacity.

Model Line	Model	Max. Dimensions (in)			Wt. (lb)	Notes	UUT
		D	W	H			
BC Controllers: Single BC	CMB-P105NU-G	17.0	25.6	11.2	72		25
	CMB-P106	17.0	25.6	11.2	76		Interp.
	CMB-P108	17.0	25.6	11.2	84		Interp.
	CMB-P1010	17.0	25.6	11.2	94		Interp.
	CMB-P1013	17.0	43.3	11.2	126		Interp.
	CMB-P1016	17.0	43.3	11.2	138		Interp.
BC Controllers: Sub BC	CMB-P104	17.0	25.5	11.2	62		Interp.
	CMB-P108	17.0	25.5	11.2	82		Interp.
	CMB-P1016	17.0	43.3	11.2	136		Interp.
BC Controllers: Main BC	CMB-P108	20.5	43.8	11.4	122		Interp.
	CMB-P1010	20.5	43.8	11.4	132		Interp.
	CMB-P1013	20.5	43.8	11.4	148		Interp.
	CMB-P1016NU-HA	20.5	43.8	11.4	162		26
BC Controllers: Small Capacity ¹	CMB-P104NU-J1	16.0	25.0	10.0	56		35
	CMB-P104	16.0	25.0	10.0	56	TCMBG0104	Interp.
	CMB-P106	16.0	25.0	10.0	62	TCMBG0106	Interp.
	CMB-P108	16.0	25.0	10.0	82	TCMBG0108	Interp.
BC Controllers: Medium Capacity ¹	CMB-P108	21.5	35.9	10.0	82	TCMBM0108	Interp.
	CMB-P1012	21.5	35.9	10.0	131	TCMBG1012	Interp.
BC Controllers: Large Capacity ¹	CMB-P1012	22.0	45	10.0	131	TCMBM1012	Interp.
	CMB-P1016	22.0	45	10.0	144.5	TCMBG1016	Interp.
	CMB-P1016NU-KA1	22.0	45	10.0	114.5		36
Hybrid VRF Main BC ^{2,3}	CMB-WP108NU-AB	59.9	24.3	11.0	109	TCMBM0108VB11N4	Extrap
	CMB-WP1016NU-AB	70.0	24.3	11.0	135	TCMBM01016VB11N4	Extrap
	CMB-WP108NU-AA	59.9	24.3	11.0	204	TCMBM0108VA11N4, Tested	46
	CMB-WP1016NU-AA	70.0	24.3	11.0	236	TCMBM01016VA11N4	47

Notes:

¹Alternate "TR" model number for Trane branded product line. Unit is identical.

²CMB-WP####NU-AB is a depopulated CMB-WP####NU-AA.

³Alternate model number for Trane branded product line. Unit is identical.

Manufacturer: Mitsubishi Electric Corporation
Product Type: Air Conditioning Units – Split
Model Line: P-Type, S-Type, City Multi Outdoor

Seismic Parameters
 $S_{DS} = 2.00g$ for $z/h=1, R_{\mu}=1.3, H_f=3.5$
 $S_{DS} = 2.11g$ for $z/h=0, R_{\mu}=1.0, H_f=1.0$ $I_p=1.5$

Building Codes
CBC 2025

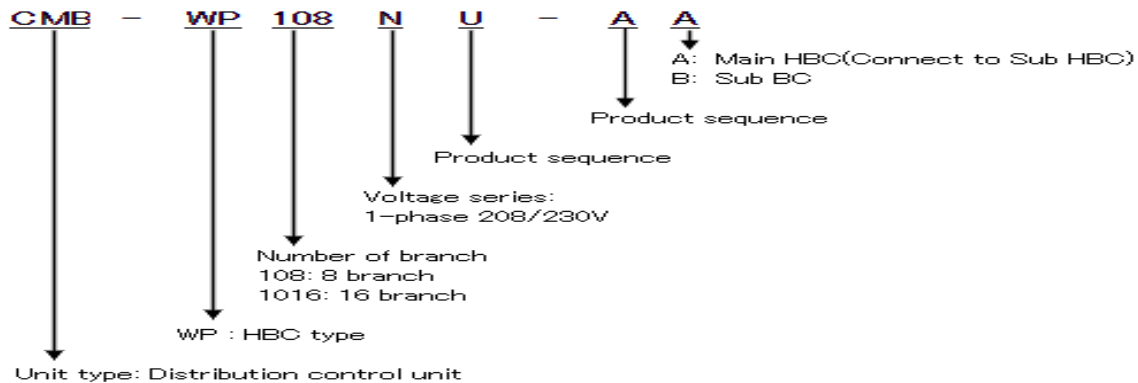
TABLE 4 Nomenclature FOR REFERENCE ONLY

Model Name (City Multi BC)

City Multi Branch Controller

Digit #	Character	Description	Digit #	Character	Description
1	T	Brand Name	10	H	Unit Application
2	C	Trane	11	A	Single J1
3	M	Model Family	12	I	JA1 Main
4	E	Branch Controller	13	I	KA1 Main
5	M	Unit Type	14	N	KB1 Sub
6	0	Main	15	1	Voltage
7	1	Sub	16	1	208v/1p/60hz
8	0	Single	17	K	Generation Code
9	8	# of Branches	18	L	7th Generation
10	4	4 branches	19	N	8th Generation
11	5	5 branches	20	N	9th Generation
12	6	6 branches	21	4	Refrigerant
13	8	8 branches	22	4	R410a
14	10	10 branches	23	A	Internal Service Digit
15	12	12 branches	24	A	1st revision
16	16	16 branches	25	B	2nd Revision

Note: Digit 16 is an internal digit and is not shown on product



Manufacturer: Mitsubishi Electric Corporation
Product Type: Air Conditioning Units – Split
Model Line: P-Type, S-Type, City Multi Outdoor

Seismic Parameters

$S_{DS} = 2.00g$ for $z/h=1, R_{\mu}=1.3, H_f=3.5$
 $S_{DS} = 2.11g$ for $z/h=0, R_{\mu}=1.0, H_f=1.0$ $I_p=1.5$

Building Codes

CBC 2025

TABLE 5 **Mounting Configuration: Wall Mounted - Rigid**

Construction Summary

Plastic covers on carbon steel enclosures

Options Summary

PKFY and PKA: 208/230V, heat pump and cooling only

Model Line	Model	Max. Dimensions (in)			Wt. (lb)	Notes	UUT
		D	W	H			
PKFY Indoor Wall Mounted ¹ (P Series)	PKFY-P04	8.9	30.4	11.6	22	TPKFYP004	Extrap.
	PKFY-P04NLMU-E	9.3	30.4	11.8	23.5		40
	PKFY-P06	8.9	32.1	11.6	22	TPKFYP006	Interp.
	PKFY-P06NBMU-E	8.9	32.1	11.6	22		7
	PKFY-P08	9.8	35.4	11.6	29	TPKFYP008	Interp.
	PKFY-P12	9.8	35.4	11.6	29	TPKFYP012	Interp.
	PKFY-P15	9.8	35.4	11.6	29	TPKFYP015	Interp.
	PKFY-P18	9.8	35.4	11.6	29	TPKFYP0018	Interp.
	PKFY-P18NLMU-E	9.3	35.4	11.8	28	TPKFYP018LM140A	41
	PKFY-P24	11.6	46.1	14.4	46	TPKFYP024	Interp.
	PKFY-P30	11.6	46.1	14.4	46	TPKFYP030	Interp.
PKFY Indoor Wall Mounted (L Series)	PKFY-L04NLMU-A	9.3	30.5	11.8	24		Extrap.
	PKFY-L06NLMU-A	9.3	30.5	11.8	24		Extrap.
	PKFY-L08NLMU-A	9.3	30.5	11.8	24		Extrap.
	PKFY-L12NLMU-A	9.3	30.5	11.8	24		Extrap.
	PKFY-L15NLMU-A	9.3	35.4	11.8	24		Extrap.
	PKFY-L18NLMU-A	9.3	35.4	11.8	24		65
	PKFY-L24NKMU-A	11.6	46.1	14.4	44.5		Interp.
	PKFY-L30NKMU-A	11.6	46.1	14.4	44.5		66

¹Alternate "TR" model number for Trane branded product line. Unit is identical.

Manufacturer: Mitsubishi Electric Corporation
Product Type: Air Conditioning Units – Split
Model Line: P-Type, S-Type, City Multi Outdoor

Seismic Parameters

$S_{DS} = 2.00g$ for $z/h=1, R_{\mu}=1.3, H_f=3.5$
 $S_{DS} = 2.11g$ for $z/h=0, R_{\mu}=1.0, H_f=1.0$ $I_p=1.5$

Building Codes

CBC 2025

TABLE 5 **Mounting Configuration: Wall Mounted - Rigid**

Construction Summary

Plastic covers on carbon steel enclosures

Options Summary

PKFY and PKA: 208/230V, heat pump and cooling only

Model Line	Model	Max. Dimensions (in)			Wt. (lb)	Notes	UUT
		D	W	H			
PKA ^{1,2} Indoor Wall Mounted	PKA-A12 ³	9.8	35.4	11.6	29	TPKA0A012 APKA0A012	Interp.
	PKA-AL12NL ⁴	9.3	35.4	11.8	28		Interp.
	PKA-A18 ³	9.8	35.4	11.6	29	TPKA0A018 APKA0A018	Interp.
	PKA-AL18NL ⁴	9.3	35.4	11.8	28		Interp.
	PKA-A24 ³	11.6	46.1	14.4	46	TPKA0A024 APKA0A024	Interp.
	PKA-AK24NL ⁴	11.6	46.1	14.4	46		Interp.
	PKA-A30 ³	11.6	46.1	14.4	46	TPKA0A030 APKA0A030	Interp.
	PKA-AK30NL ⁴	11.6	46.1	14.4	46		Interp.
	PKA-A36 ³	11.6	46.1	14.4	46	TPKA0A036 APKA0A036	Interp.
	PKA-AK36NL ⁴	11.6	46.1	14.4	46		Interp.
	PKA-A36KA ³	11.6	46.1	14.4	46		8
Hydrobox Indoor Unit	ERSF-NM6E	14.2	20.9	31.5	112.5		70

¹Alternate "TR" model number for Trane branded product line. Unit is identical.
²Alternate "AS" model number for American Standard branded product line. Unit is identical.
³PKA-A is depopulated version of PKFY-P.
⁴PKA-AL and PKA-AK is depopulated version of PKFY-L.

Manufacturer: Mitsubishi Electric Corporation
Product Type: Air Conditioning Units – Split
Model Line: P-Type, S-Type, City Multi Outdoor

Seismic Parameters
 $S_{DS} = 2.00g$ for $z/h=1, R_u=1.3, H_f=3.5$
 $S_{DS} = 2.11g$ for $z/h=0, R_u=1.0, H_f=1.0$ $I_p=1.5$

Building Codes
CBC 2025

TABLE 5 Nomenclature FOR REFERENCE ONLY

T	R	U	Z	A			0	1	2	1	L	A	8	0	A
1		2	3	4	5	6	7	8	9	10	11	12	13	14	15
Brand Name	Configuration	Indoor Description	Indoor Description	Indoor Description	Indoor Description	Capacity (Btu/h)	Capacity (Btu/h)	Capacity (Btu/h)	Voltage	Chasis Generation	Controls	Generation Code	Futhure Use	Minor Design	
TR = Trane AS: American St	P: P Series	KA0A: Wall Mounted CA0A: Ceiling Suspended LA0A: Cassette VA0A: Vertical Ducted EADA: Horizontal Ducted				012: 12,000 018: 18,000 024: 24,000 030: 30,000 036: 36,000 042: 42,000			0: 115V, 1ph 1: 208/230V, 1ph	K: Previous Generation H: Current Generation	A: A Control	7th Generation 8th Generation	0 1	A: 1st Gen B: 2nd Gen	

Model Name (City Multi Indoor)

City Multi IDU

I *P* *K* *E* *Y* *P* *0* *2* *4* *B* *M* *I* *4* *0* *A*
 1 2 3 4 5 6 7 8 9 10 11 12 13 14 15

- Digit #1 = Brand Name
T = Trane
- Digit #2 = Model Family
P = Packaged AC
- Digit #3 = Application
K = Wall Mounted
L = Ceiling Recessed 4-way
M = Ceiling Recessed 1-way
C = Ceiling Suspended
E = Ceiling Concealed Ducted
F = Floor Standing
V = Multi-position Air Handler
W = Hydronic Heat Exchanger
- Digit #4,5,6 = Unit Type
FYP = Indoor Unit
- Digit #7,8,9 = Capacity (Btu/h)
006 = 6,000
008 = 8,000
012 = 12,000
015 = 15,000
018 = 18,000
024 = 24,000
027 = 27,000
030 = 30,000
036 = 36,000
048 = 48,000
054 = 54,000
072 = 72,000
096 = 96,000
120 = 1,200CFM
- Digit #10,11 = Configuration
BM = Small cabinet (Wall mounted, 1 way cassette)
FM = Medium cabinet (wall mounted)
KM = Large cabinet (Wall mounted, ceiling suspended)
EM = 33" x 33"
FM = 24" x 24"
MS = Low Profile
MA = Medium Static
MH = High Static
RE = Recessed
CS = Console
AM = Air Handler
OA = All fresh type
AF = DOAS w/o Reheat
AR = DOAS with Reheat
AU = Hydro HEX unit
BU = Hydro HEX with booster
- Digit #12 = Voltage
1 = 208-230v/1p/60hz
- Digit #13 = Refrigerant
4 = R410a
- Digit #14 = Hold for Future
0 = 1st Gen
1 = 2nd Gen
2 = 3rd Gen
- Digit #15 = Minor Design Sequence
A = Original model
B = First revision
C = 2nd Revision



UUT	Model	Test Report	Test Date	Test Laboratory	S _{DS}	z/h	R _μ	H _f	I _p
1	PUZ-A12NKA7	1700802-TR-001, Rev.01	7/27/2017	Pacific Earthquake Engineering Research Center (PEER)	2.00 2.50	1 0	1.3 1.0	3.5 1.0	1.5
2	PUZ-A36NKA7	1700802-TR-001, Rev.01	7/28/2017	Pacific Earthquake Engineering Research Center (PEER)	2.00 2.50	1 0	1.3 1.0	3.5 1.0	1.5
3	PEAD-A12AA7	1700802-TR-001, Rev.01	7/27/2017	Pacific Earthquake Engineering Research Center (PEER)	2.00 2.50	1 0	1.3 1.0	3.5 1.0	1.5
4	PEAD-A42AA7	1700802-TR-001, Rev.01	7/28/2017	Pacific Earthquake Engineering Research Center (PEER)	2.00 2.50	1 0	1.3 1.0	3.5 1.0	1.5
5	PUMY-P60NKMU1	1700802-TR-001, Rev.01	7/27/2017	Pacific Earthquake Engineering Research Center (PEER)	2.00 2.50	1 0	1.3 1.0	3.5 1.0	1.5
6	PUMY-P48NHMU	Q0028.00 (UUT-5)	7/19/2010	Curtiss Wright Trentec	2.00 2.37	1 0	1.3 1.0	3.5 1.0	1.5
7	PKFY-P06NBMU-E	Q0028.00 (UUT-14)	7/19/2010	Curtiss Wright Trentec	2.00 2.50	1 0	1.3 1.0	3.5 1.0	1.5
8	PKA-A36KA	Q0028.00 (UUT-13)	7/19/2010	Curtiss Wright Trentec	2.00 2.50	1 0	1.3 1.0	3.5 1.0	1.5
9	PCA-A24KA7	15152,Rev.0 (UUT4)		Environmental Testing Laboratory (ETL)	2.00 2.50	1 0	1.3 1.0	3.5 1.0	1.5
UUT 10 Omitted DATE: 03/17/2026									
11	MVZ-A36AA7 & PAC-AH001-1	15152,Rev.0 (UUT3)	1/30/2019	Environmental Testing Laboratory (ETL)	2.00 2.50	1 0	1.3 1.0	3.5 1.0	1.5
12	PLFY-P12NFMU-E	15152,Rev.0 (UUT6)	1/30/2019	Environmental Testing Laboratory (ETL)	2.00 2.50	1 0	1.3 1.0	3.5 1.0	1.5
13	PAC-AH001-1	15152,Rev.0 (UUT1)	1/30/2019	Environmental Testing Laboratory (ETL)	2.00 2.50	1 0	1.3 1.0	3.5 1.0	1.5
14	PAC-AH001-1	15152,Rev.0 (UUT2)	1/30/2019	Environmental Testing Laboratory (ETL)	2.00 2.50	1 0	1.3 1.0	3.5 1.0	1.5
15	PMFY-P06NBMU-E	Q1619.0	2/23/2016	Curtiss Wright Trentec	2.90 3.15	1 0	1.3 1.0	3.5 1.0	1.5
16	PMFY-P15NBMU-E	Q1619.0	2/23/2016	Curtiss Wright Trentec	2.90 3.15	1 0	1.3 1.0	3.5 1.0	1.5
17	PLFY-P12NBMU-E	Q0028.00 (UUT-7)	7/19/2010	Curtiss Wright Trentec	2.00 2.37	1 0	1.3 1.0	3.5 1.0	1.5
18	PLFY-P48NEMU-E	Q1653.00 (UUT-26)	8/24/2016	Curtiss Wright Trentec	3.00 3.28	1 0	1.3 1.0	3.5 1.0	1.5
19	PLA-A42BA	Q0028.00 (UUT-10)	7/19/2010	Curtiss Wright Trentec	2.00 2.61		1.3 1.0	3.5 1.0	1.5

Notes:

UUT	Model	Test Report	Test Date	Test Laboratory	S _{DS}	z/h	R _μ	H _f	I _p
20	PEFY-P06NMSU-E	Q0028.00 (UUT-6)	7/19/2010	Curtiss Wright Trentec	2.00 2.37	1 0	1.3 1.0	3.5 1.0	1.5
21	PEFY-P96NMHU-E	Q0028.00 (UUT-1)	7/19/2010	Curtiss Wright Trentec	2.00 2.37	1 0	1.3 1.0	3.5 1.0	1.5
22	PEFY-AF1200CFMR	Q0028.00 (UUT-3)	7/19/2010	Curtiss Wright Trentec	2.00 2.11	1 0	1.3 1.0	3.5 1.0	1.5
23	PVFY-P12AMU-E	Q1619.0 (UUT-19)	2/23/2016	Curtiss Wright Trentec	2.85 3.15	1 0	1.3 1.0	3.5 1.0	1.5
24	PVFY-P54AMUE-E	Q1619.0 (UUT-20)	2/23/2016	Curtiss Wright Trentec	2.85 3.15	1 0	1.3 1.0	3.5 1.0	1.5
25	CMB-P105NU-G	Q0028.00 (UUT-9)	7/19/2010	Curtiss Wright Trentec	2.00 2.60	1 0	1.3 1.0	3.5 1.0	1.5
26	CMP-P1016NU-HA	Q0028.00 (UUT-12)	7/19/2010	Curtiss Wright Trentec	2.00 2.50	1 0	1.3 1.0	3.5 1.0	1.5
UUT 27 and UUT 28 Omitted									
29	PQRY-P72TLMU-A	Q1619.0 (UUT-24)	2/23/2016	Curtiss Wright Trentec	2.75 3.15	1 0	1.3 1.0	3.5 1.0	1.5
30	PQHY-P240YLMU-A	Q1619.0 (UUT-25)	2/23/2016	Curtiss Wright Trentec	2.60 2.85	1 0	1.3 1.0	3.5 1.0	1.5
31	PUHY-P72TLMU-A	Q1619.0 (UUT-22)	2/23/2016	Curtiss Wright Trentec	2.75 3.15	1 0	1.3 1.0	3.5 1.0	1.5
32	PURY-P168YLMU-A	Q1619.0 (UUT-23)	2/23/2016	Curtiss Wright Trentec	2.75 3.15	1 0	1.3 1.0	3.5 1.0	1.5
33	PURY-EP168TNU-A	15373,Rev.1	7/24/2019	Environmental Testing Laboratory (ETL)	2.00 2.50	1 0	1.3 1.0	3.5 1.0	1.5
34	PUHY-EP192TNU-A	15373,Rev.1	7/24/2019	Environmental Testing Laboratory (ETL)	2.00 2.50	1 0	1.3 1.0	3.5 1.0	1.5
35	CMB-P104NU-J1	15373,Rev.1	7/24/2019	Environmental Testing Laboratory (ETL)	2.00 2.50	1 0	1.3 1.0	3.5 1.0	1.5
36	CMB-P1016NU-KA1	15373,Rev.1	7/24/2019	Environmental Testing Laboratory (ETL)	2.00 2.50	1 0	1.3 1.0	3.5 1.0	1.5
37	PCA-A42KA7	15373,Rev.1	7/24/2019	Environmental Testing Laboratory (ETL)	2.00 2.50	1 0	1.3 1.0	3.5 1.0	1.5
38	PURY-EP240TNU-A	2000559-TR-001-R0 (UUT1)	3/30/2022	Environmental Testing Laboratory (ETL)	2.00 2.50	1 0	1.3 1.0	3.5 1.0	1.5
39	PUHY-EP240YNU-A	2000559-TR-001-R0 (UUT2)	3/30/2022	Environmental Testing Laboratory (ETL)	2.00 2.50	1 0	1.3 1.0	3.5 1.0	1.5

Notes:

UUT	Model	Test Report	Test Date	Test Laboratory	S _{DS}	z/h	R _μ	H _f	I _p
40	PKFY-P04NLMU-E	2000559-TR-001-R0 (UUT3)	3/30/2022	Environmental Testing Laboratory (ETL)	2.00 2.50	1 0	1.3 1.0	3.5 1.0	1.5
41	TPKFYP018LM140A	2000559-TR-001-R0 (UUT4)	3/30/2022	Environmental Testing Laboratory (ETL)	2.00 2.50	1 0	1.3 1.0	3.5 1.0	1.5
42	TUMYH0361AK41NA	2000559-TR-001-R0 (UUT5)	3/30/2022	Environmental Testing Laboratory (ETL)	2.00 2.50	1 0	1.3 1.0	3.5 1.0	1.5
43	MXZ-SM120TAM	2000667-TR-001-R0	8/10/2022	Environmental Testing Laboratory (ETL)	2.00 2.50	1 0	1.3 1.0	3.5 1.0	1.5
44	QAHV-N136TAU-HPB-B5	TR231014-01-R0	10/26/2023	Environmental Testing Laboratory (ETL)	2.00 2.50	1 0	1.3 1.0	3.5 1.0	1.5
45	QAHV-N136YAU-HPB-B5	TR231014-01-R0	10/26/2023	Environmental Testing Laboratory (ETL)	2.00 2.50	1 0	1.3 1.0	3.5 1.0	1.5
46	TCMBM0108VA11N4	TR231014-01-R0	10/26/2023	Environmental Testing Laboratory (ETL)	2.00 2.50	1 0	1.3 1.0	3.5 1.0	1.5
47	CMB-WP1016NU-AA	TR231014-01-R0	10/26/2023	Environmental Testing Laboratory (ETL)	2.00 2.50	1 0	1.3 1.0	3.5 1.0	1.5
48	PEFY-WL06NMAU-A	TR231014-01-R0	10/26/2023	Environmental Testing Laboratory (ETL)	2.00 2.50	1 0	1.3 1.0	3.5 1.0	1.5
49	PEFY-WL48NMAU-A	TR231014-02-R0	5/6/2024	Environmental Testing Laboratory (ETL)	2.00 2.50	1 0	1.3 1.0	3.5 1.0	1.5
50	MXZ-SM36NL	TR251686-01-R0 (UUT1)	8/19/2025	Environmental Testing Laboratory (ETL)	2.00 2.50	1 0	1.3 1.0	3.5 1.0	1.5
51	MXZ-SM60NL	TR251686-01-R0 (UUT2)	8/19/2025	Environmental Testing Laboratory (ETL)	2.00 2.50	1 0	1.3 1.0	3.5 1.0	1.5
52	MXZ-SM48NLHZ	TR251686-01-R0 (UUT3)	8/19/2025	Environmental Testing Laboratory (ETL)	2.00 2.50	1 0	1.3 1.0	3.5 1.0	1.5
53	PUZ-AK24NLHZ	TR251686-01-R0 (UUT4)	8/19/2025	Environmental Testing Laboratory (ETL)	2.00 2.50	1 0	1.3 1.0	3.5 1.0	1.5
54	PUZ-AK48NLHZ	TR251686-01-R0 (UUT5)	8/19/2025	Environmental Testing Laboratory (ETL)	2.00 2.50	1 0	1.3 1.0	3.5 1.0	1.5
55	PUZ-AK60NL	TR251686-01-R0 (UUT6)	8/21/2025	Environmental Testing Laboratory (ETL)	2.00 2.50	1 0	1.3 1.0	3.5 1.0	1.5
56	PCA-AK24NL	TR251686-01-R0 (UUT7)	8/20/2025	Environmental Testing Laboratory (ETL)	2.00 2.50	1 0	1.3 1.0	3.5 1.0	1.5
57	PCA-AK42NL	TR251686-01-R0 (UUT8)	8/20/2025	Environmental Testing Laboratory (ETL)	2.00 2.50	1 0	1.3 1.0	3.5 1.0	1.5
58	PEAD-AA09NL	TR251686-01-R0 (UUT9)	8/20/2025	Environmental Testing Laboratory (ETL)	2.00 2.50	1 0	1.3 1.0	3.5 1.0	1.5

Notes:

UUT 1

Test Report# 1700802-TR-001, Rev.01

Manufacturer: Mitsubishi Electric Corporation
Model Line: P-Type & City Multi Units
Model Number: PUZ-A12NKA7
Serial Number: 75U01748C
Product Type: Air Conditioning Unit - Split

Highest Passed Test Level								
S _{DS}	z/h	R _μ	H _f	I _p	A _{flx-h}	A _{rig-h}	A _{flx-v}	A _{rig-v}
2.00	1.0	1.3	3.5	1.5	3.20	2.15	1.67	0.67
2.50	0.0	1.0	1.0					

Dimensions/Weights			
Depth (in)	Width (in)	Height (in)	Weight (lbs.)
11.6	31.5	23.6	90

Lowest Natural Frequency (Hz)		
Front-Back	Side-Side	Vertical
11.79	9.75	>33.3

Building Codes
CBC 2025

Test Criteria
ICC-ES AC156-24

Construction/Option Summary
Carbon steel housing

UUT Mounting Details:



Rigid base mounted with (4) 1/2" dia. SAE grade 8 bolts with washers at the mounting feet.
 Unit maintained structural integrity and remained operational per manufacturer requirement following shake table test.
 All contents were included in the unit per operating conditions.

UUT 2

Test Report# 1700802-TR-001, Rev.01

Manufacturer: Mitsubishi Electric Corporation
Model Line: P-Type & City Multi Units
Model Number: PUZ-A36NKA7
Serial Number: 63U01108B
Product Type: Air Conditioning Unit - Split

Highest Passed Test Level								
S _{DS}	z/h	R _μ	H _f	I _p	A _{flx-h}	A _{rig-h}	A _{flx-v}	A _{rig-v}
2.00	1.0	1.3	3.5	1.5	3.20	2.15	1.67	0.67
2.50	0.0	1.0	1.0					

Dimensions/Weights			
Depth (in)	Width (in)	Height (in)	Weight (lbs.)
13.0	37.4	53.2	258

Lowest Natural Frequency (Hz)		
Front-Back	Side-Side	Vertical
5.82	5.72	>33.3

Building Codes
CBC 2025

Test Criteria
ICC-ES AC156-24

Construction/Option Summary
Carbon steel housing

UUT Mounting Details:



Rigid base mounted with (4) 1/2" dia. SAE grade 8 bolts with washers at the mounting feet. An additional 1/8" x 16.5" x 1" carbon steel flat bar attached with three (3) #12 - 3/4" screws and one (1) #14 - 3/4" screw is to be attached above foot.

Unit maintained structural integrity and remained operational per manufacturer requirement following shake table test. All contents were included in the unit per operating conditions.

UUT 3

Test Report# 1700802-TR-001, Rev.01

Manufacturer: Mitsubishi Electric Corporation
Model Line: P-Type & City Multi Units
Model Number: PEAD-A12AA7
Serial Number: 76R00303
Product Type: Air Conditioning Unit - Split

Highest Passed Test Level								
S _{DS}	z/h	R _μ	H _f	I _p	A _{flx-h}	A _{rig-h}	A _{flx-v}	A _{rig-v}
2.00	1.0	1.3	3.5	1.5	3.20	2.15	1.67	0.67
2.50	0.0	1.0	1.0					

Dimensions/Weights			
Depth (in)	Width (in)	Height (in)	Weight (lbs.)
29.0	39.4	9.0	58

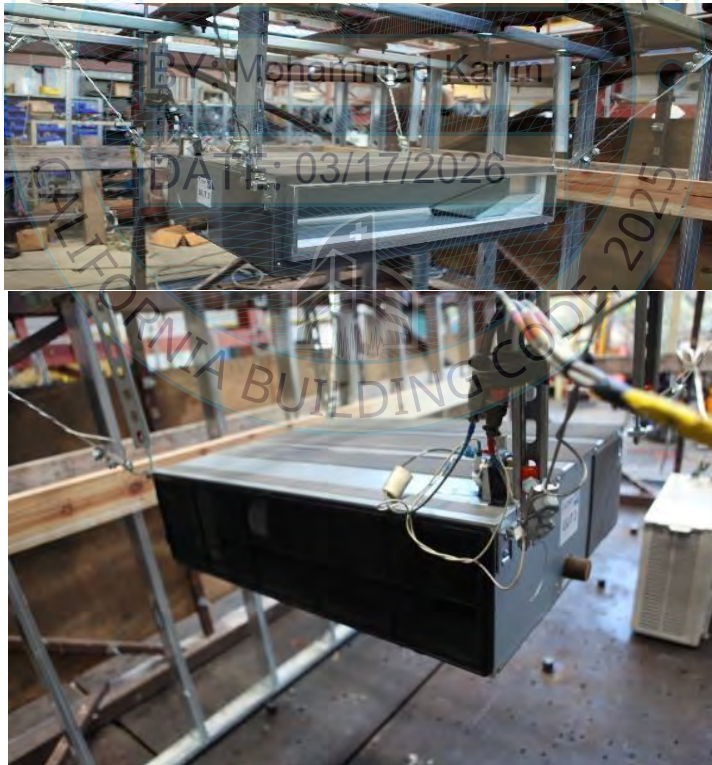
Lowest Natural Frequency (Hz)		
Front-Back	Side-Side	Vertical
N/A	N/A	N/A

Building Codes
CBC 2025

Test Criteria
ICC-ES AC156-24

Construction/Option Summary
Carbon steel housing

UUT Mounting Details:



The unit was ceiling suspended using (4) 3/8" A36 threaded rod (16" drop) with (2) Mason UCC rod stiffeners each and (4) 1/8" diagonal cable braces with Mason SCB-1/SCBH-1 clips at each end. Unit maintained structural integrity and remained operational per manufacturer requirement following shake table test. All contents were included in the unit per operating conditions.

UUT 4

Test Report# 1700802-TR-001, Rev.01

Manufacturer: Mitsubishi Electric Corporation
Model Line: P-Series & City Multi Units
Model Number: PEAD-A42AA7
Serial Number: 75R00189
Product Type: Air Conditioning Unit - Split

Highest Passed Test Level								
S _{DS}	z/h	R _μ	H _f	I _p	A _{flx-h}	A _{rig-h}	A _{flx-v}	A _{rig-v}
2.00	1.0	1.3	3.5	1.5	3.20	2.15	1.67	0.67
2.50	0.0	1.0	1.0					

Dimensions/Weights			
Depth (in)	Width (in)	Height (in)	Weight (lbs.)
29.0	55.1	9.9	91

Lowest Natural Frequency (Hz)		
Front-Back	Side-Side	Vertical
N/A	N/A	N/A

Building Codes
CBC 2025

Test Criteria
ICC-ES AC156-24

Construction/Option Summary
Carbon steel housing

UUT Mounting Details:



The unit was ceiling suspended using (4) 3/8" A36 threaded rod (16" drop) with (2) Mason UCC rod stiffeners each and (4) 1/8" diagonal cable braces with Mason SCB-1/SCBH-1 clips at each end. The brackets will be attached using four (4) #12 self-tapping screws, 1 #14 self-tapping screw, and one additional washer as part of all future construction.

Unit maintained structural integrity and remained operational per manufacturer requirement following shake table test. All contents were included in the unit per operating conditions.

UUT 5

Test Report# 1700802-TR-001, Rev.01

Manufacturer: Mitsubishi Electric Corporation
Model Line: P-Type & City Multi Outdoor Units
Model Number: PUMY-P60NKMU1
Serial Number: 63U01949B
Product Type: Air Conditioning Unit - Split

Highest Passed Test Level								
S _{DS}	z/h	R _μ	H _f	I _p	A _{flx-h}	A _{rig-h}	A _{flx-v}	A _{rig-v}
2.00	1.0	1.3	3.5	1.5	3.20	2.15	1.67	0.67
2.50	0.0	1.0	1.0					

Dimensions/Weights			
Depth (in)	Width (in)	Height (in)	Weight (lbs.)
13.0	41.3	52.7	306

Lowest Natural Frequency (Hz)		
Front-Back	Side-Side	Vertical
7.3	4.2	>33.3

Building Codes	Test Criteria	Construction/Option Summary
CBC 2025	ICC-ES AC156-24	Carbon steel housing

UUT Mounting Details:



Rigid base mounted with (4) 1/2" dia. SAE grade 8 bolts with washers at the mounting feet. An additional 1/8" x 16.5" x 1" carbon steel flat bar attached with three (3) #12 - 3/4" screws and one (1) #14 - 3/4" screw is to be attached above foot.

Unit maintained structural integrity and remained operational per manufacturer requirement following shake table test. All contents were included in the unit per operating conditions.

UUT 6

Test Report# Q0028.00 (UUT-5)

Manufacturer: Mitsubishi Electric Corporation
Model Line: P-Type & S-Type A/C Units
Model Number: PUMY-P48NHMU
Serial Number: N/A
Product Type: Air Conditioning Unit - Split

Highest Passed Test Level								
S _{DS}	z/h	R _μ	H _f	I _p	A _{flx-h}	A _{rig-h}	A _{flx-v}	A _{rig-v}
2.00	1.0	1.3	3.5	1.5	3.20	2.15	1.67	0.67
2.50	0.0	1.0	1.0					

Dimensions/Weights			
Depth (in)	Width (in)	Height (in)	Weight (lbs.)
13.2	37.4	53.2	287

Lowest Natural Frequency (Hz)		
Front-Back	Side-Side	Vertical
3.7	6.2	>33.3

Building Codes
CBC 2025

Test Criteria
ICC-ES AC156-24

Construction/Option Summary
Carbon steel housing

UUT Mounting Details:



Rigid base mounted with (4) 3/8" dia. SAE grade 5 bolts with washers.
 Unit maintained structural integrity and remained operational per manufacturer requirement following shake table test.
 All contents were included in the unit per operating conditions.

UUT 7

Test Report# Q0028.00 (UUT-14)

Manufacturer: Mitsubishi Electric Corporation
Model Line: P-Type & City Multi Indoor Wall Units
Model Number: PKFY-P06NBMU-E
Serial Number: N/A
Product Type: Air Conditioning Unit - Split

Highest Passed Test Level									
S_{DS}	z/h	R_{μ}	H_f	I_p	A_{flx-h}	A_{rig-h}	A_{flx-v}	A_{rig-v}	
2.00	1.0	1.3	3.5	1.5	3.20	2.15	1.67	0.67	
2.50	0.0	1.0	1.0						

Dimensions/Weights			
Depth (in)	Width (in)	Height (in)	Weight (lbs.)
8.9	32.1	11.6	22

Lowest Natural Frequency (Hz)		
Front-Back	Side-Side	Vertical
N/A	N/A	N/A

Building Codes	Test Criteria	Construction/Option Summary
CBC 2025	ICC-ES AC156-24	Plastic enclosure

UUT Mounting Details:



UUT's backing plate, unit wall mounted-rigid, was secured to test fixture with five (5) #10 bolts. Test unit clips into manufacturer provided backing plate.
 Unit maintained structural integrity and remained operational per manufacturer requirement following shake table test.
 All contents were included in the unit per operating conditions.

UUT 8

Test Report# Q0028.00 (UUT-13)

Manufacturer: Mitsubishi Electric Corporation
Model Line: P-Type & City Multi Indoor Wall Units
Model Number: PKA-A36KA
Serial Number: N/A
Product Type: Air Conditioning Unit - Split

Highest Passed Test Level									
S_{DS}	z/h	R_{μ}	H_f	I_p	A_{flx-h}	A_{rig-h}	A_{flx-v}	A_{rig-v}	
2.00	1.0	1.3	3.5	1.5	3.20	2.15	1.67	0.67	
2.50	0.0	1.0	1.0						

Dimensions/Weights			
Depth (in)	Width (in)	Height (in)	Weight (lbs.)
11.6	46.1	14.4	46

Lowest Natural Frequency (Hz)		
Front-Back	Side-Side	Vertical
N/A	N/A	N/A

Building Codes	Test Criteria	Construction/Option Summary
CBC 2025	ICC-ES AC156-24	Plastic enclosure

UUT Mounting Details:



BY: Mohammad Karim

DATE: 03/17/2026

UUT's backing plate, unit wall mounted-rigid, was secured to test fixture with five (5) #10 bolts. Test unit clips into manufacturer provided backing plate.
 Unit maintained structural integrity and remained operational per manufacturer requirement following shake table test.
 All contents were included in the unit per operating conditions.

UUT 9

Test Report# 15152, Rev.0 (UUT 4)

Manufacturer: Mitsubishi Electric Corporation
Model Line: P-Type and S-Type A/C Units
Model Number: PCA-A24KA7
Serial Number: N/A
Product Type: Air Conditioning Unit - Split

Highest Passed Test Level								
S _{DS}	z/h	R _μ	H _f	I _p	A _{flx-h}	A _{rig-h}	A _{flx-v}	A _{rig-v}
2.00	1.0	1.3	3.5	1.5	3.20	2.15	1.67	0.67
2.50	0.0	1.0	1.0					

Dimensions/Weights			
Depth (in)	Width (in)	Height (in)	Weight (lbs.)
26.8	50.4	9.1	71

Lowest Natural Frequency (Hz)		
Front-Back	Side-Side	Vertical
N/A	N/A	N/A

Building Codes
CBC 2025

Test Criteria
ICC-ES AC156-24

Construction/Option Summary
Carbon steel and plastic enclosure

UUT Mounting Details:



Ceiling suspended rigid using (4) 3/8" A307 hanger rods w/ rod stiffeners (Drop=16-20"), (4) 3/32" diagonal cable braces w/ Mason SCB- 0/SCBH-0 clips, (24) 3/8" nuts, (8) 3/8" square washers, (16) 3/8" flat washers, & (16) 3/8" locking washers.

Unit maintained structural integrity and remained operational per manufacturer requirement following shake table test. All contents were included in the unit per operating conditions.

UUT 11

Test Report# 15152, Rev.0 (UUT3)

Manufacturer: Mitsubishi Electric Corporation
Model Line: LEV AHU Controller
Model Number: MVZ-A36AA7 and PAC-AH001-1
Serial Number: 91G0034
Product Type: Air Conditioning Unit - Split

Highest Passed Test Level									
S _{DS}	z/h	R _μ	H _f	I _p	A _{flx-h}	A _{rig-h}	A _{flx-v}	A _{rig-v}	
2.00	1.0	1.3	3.5	1.5	3.20	2.15	1.67	0.67	
2.50	0.0	1.0	1.0						

Dimensions/Weights			
Depth (in)	Width (in)	Height (in)	Weight (lbs.)
4.7	12.8	19.5	11.5

Lowest Natural Frequency (Hz)		
Front-Back	Side-Side	Vertical
N/A	N/A	N/A

Building Codes
CBC 2025

Test Criteria
ICC-ES AC156-24

Construction/Option Summary
MVZ-A36AA7: Galvanized steel PAC-AH001-1: Sheet metal enclosure

UUT Mounting Details:



↑
MVZ Unit

↑
MVZ Unit

UUT 11 was mounted onto a VAV box. Total weight of VAV and LEV was 172.5. LEV unit mounted to VAV box with (4) #14 x 1" self tapping screws. VAV unit suspended using (4) 3/8" A307 hanger rods w/ rod stiffeners (Drop=16-20"), (4) 3/32" diagonal cable braces w/ Mason SCB 0/SCBH-0 clips, (24) 3/8" nuts, (16) washers, (16) 3/8" locking washers, & (16) square washers. Test Report 15152 states dimension and weight including MVZ- A36AA7. It was used for mounting purposes only. Total weight 172.5 lbs. Total dimensions 21.6" x 21" x 54.25".
 Unit maintained structural integrity and remained operational per manufacturer requirement following shake table test. All contents were included in the unit per operating conditions.

UUT 12

Test Report# 15152, Rev.0 (UUT6)

Manufacturer: Mitsubishi Electric Corporation
Model Line: P-Series & City Multi Units
Model Number: PLFY-P12NFMU-E
Serial Number: N/A
Product Type: Air Conditioning Unit - Split

Highest Passed Test Level								
S _{DS}	z/h	R _μ	H _f	I _p	A _{flx-h}	A _{rig-h}	A _{flx-v}	A _{rig-v}
2.00	1.0	1.3	3.5	1.5	3.20	2.15	1.67	0.67
2.50	0.0	1.0	1.0					

Dimensions/Weights			
Depth (in)	Width (in)	Height (in)	Weight (lbs.)
22.4	22.4	8.2	76

Lowest Natural Frequency (Hz)		
Front-Back	Side-Side	Vertical
N/A	N/A	N/A

Building Codes	Test Criteria	Construction/Option Summary
CBC 2025	ICC-ES AC156-24	Galvanized steel construction

UUT Mounting Details:



Ceiling suspended rigid using (4) 3/8" A307 hanger rods w/ rod stiffeners (Drop=16-20"), (8) 3/32" diagonal cable braces w/ Mason SCB- 0/SCBH-0 clips, (16) 3/8" flat washers, (16) Locking washers, (16) Square washers, & (20) 3/8" nuts.

Unit maintained structural integrity and remained operational per manufacturer requirement following shake table test. All contents were included in the unit per operating conditions.

UUT 13

Test Report# 15152, Rev.0 (UUT1)

Manufacturer: Mitsubishi Electric Corporation
Model Line: LEV AHU Controller
Model Number: PAC-AH001-1
Serial Number: 91G00324
Product Type: Air Conditioning Unit - Split

Highest Passed Test Level								
S _{DS}	z/h	R _μ	H _f	I _p	A _{flx-h}	A _{rig-h}	A _{flx-v}	A _{rig-v}
2.00	1.0	1.3	3.5	1.5	3.20	2.15	1.67	0.67
2.50	0.0	1.0	1.0					

Dimensions/Weights			
Depth (in)	Width (in)	Height (in)	Weight (lbs.)
4.7	12.8	19.5	11.5

Lowest Natural Frequency (Hz)		
Front-Back	Side-Side	Vertical
N/A	N/A	N/A

Building Codes	Test Criteria	Construction/Option Summary
CBC 2025	ICC-ES AC156-24	Sheet metal enclosure

UUT Mounting Details:



Wall mounted - rigid: Using (4) 1/4" lag bolts.

Unit maintained structural integrity and remained operational per manufacturer requirement following shake table test.
 All contents were included in the unit per operating conditions.

UUT 14

Test Report# 15152, Rev.0 (UUT2)

Manufacturer: Mitsubishi Electric Corporation
Model Line: LEV AHU Controller
Model Number: PAC-AH001-1
Serial Number: 91G00324
Product Type: Air Conditioning Unit - Split

Highest Passed Test Level								
S _{DS}	z/h	R _μ	H _f	I _p	A _{flx-h}	A _{rig-h}	A _{flx-v}	A _{rig-v}
2.00	1.0	1.3	3.5	1.5	3.20	2.15	1.67	0.67
2.50	0.0	1.0	1.0					

Dimensions/Weights			
Depth (in)	Width (in)	Height (in)	Weight (lbs.)
4.7	12.8	19.5	11.5

Lowest Natural Frequency (Hz)		
Front-Back	Side-Side	Vertical
N/A	N/A	N/A

Building Codes	Test Criteria	Construction/Option Summary
CBC 2025	ICC-ES AC156-24	Sheet metal enclosure

UUT Mounting Details:



Wall mounted - isolated: Using (4) 1/4" lags bolts. The aluminum plate was secured to four (4) Mason SLR-A-310 isolators.

Unit maintained structural integrity and remained operational per manufacturer requirement following shake table test. All contents were included in the unit per operating conditions.

UUT 15

Test Report# Q1619.0

Manufacturer: Mitsubishi Electric Corporation
Model Line: P-Series & City Multi Units
Model Number: PMFY-P06NBMU-E
Serial Number: N/A
Product Type: Air Conditioning Unit - Split

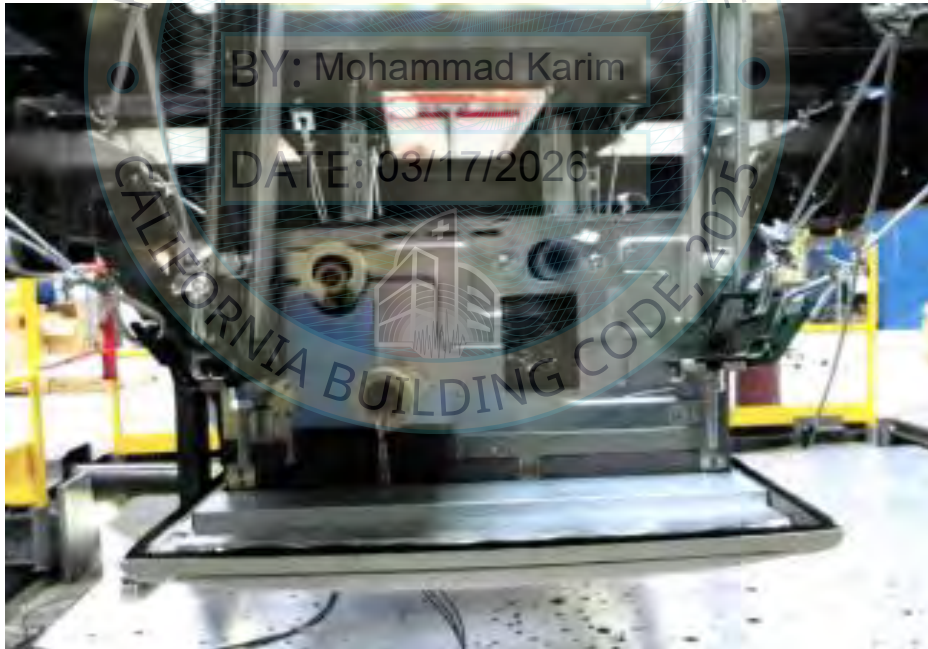
Highest Passed Test Level								
S_{DS}	z/h	R_{μ}	H_f	I_p	A_{flx-h}	A_{rig-h}	A_{flx-v}	A_{rig-v}
2.90	1.0	1.3	3.5	1.5	4.64	3.12	2.11	0.85
3.15	0.0	1.0	1.0					

Dimensions/Weights			
Depth (in)	Width (in)	Height (in)	Weight (lbs.)
32.0	15.6	9.2	38

Lowest Natural Frequency (Hz)		
Front-Back	Side-Side	Vertical
N/A	N/A	N/A

Building Codes	Test Criteria	Construction/Option Summary
CBC 2025	ICC-ES AC156-24	Galvanized steel

UUT Mounting Details:



UUT suspended with four (4) -3/8" rods with stiffeners. Each corner has two (2) 1/8"Ø cable braces. Unit maintained structural integrity and remained operational per manufacturer requirement following shake table test. All contents were included in the unit per operating conditions.

UUT 16

Test Report# Q1619.0

Manufacturer: Mitsubishi Electric Corporation
Model Line: P-Type & City Multi Units
Model Number: PMFY-P15NBMU-E
Serial Number: N/A
Product Type: Air Conditioning Unit - Split

Highest Passed Test Level								
S _{DS}	z/h	R _μ	H _f	I _p	A _{flx-h}	A _{rig-h}	A _{flx-v}	A _{rig-v}
2.90	1.0	1.3	3.5	1.5	4.64	3.12	2.11	0.85
3.15	0.0	1.0	1.0					

Dimensions/Weights			
Depth (in)	Width (in)	Height (in)	Weight (lbs.)
32.0	15.6	9.2	38

Lowest Natural Frequency (Hz)		
Front-Back	Side-Side	Vertical
N/A	N/A	N/A

Building Codes	Test Criteria	Construction/Option Summary
CBC 2025	ICC-ES AC156-24	Galvanized steel

UUT Mounting Details:



UUT suspended with four (4) 3/8" rods with stiffeners. Each corner has two (2) 1/8"Ø cable braces. Unit maintained structural integrity and remained operational per manufacturer requirement following shake table test. All contents were included in the unit per operating conditions.

UUT 17

Test Report# Q0028.00 (UUT-7)

Manufacturer: Mitsubishi Electric Corporation
Model Line: P-Type & City Multi Units
Model Number: PLFY-P12NBMU-E
Serial Number: N/A
Product Type: Air Conditioning Unit - Split

Highest Passed Test Level								
S _{DS}	z/h	R _μ	H _f	I _p	A _{flx-h}	A _{rig-h}	A _{flx-v}	A _{rig-v}
2.00	1.0	1.3	3.5	1.5	3.20	2.15	1.58	0.63
2.37	0.0	1.0	1.0					

Dimensions/Weights			
Depth (in)	Width (in)	Height (in)	Weight (lbs.)
33.1	33.1	10.2	49

Lowest Natural Frequency (Hz)		
Front-Back	Side-Side	Vertical
N/A	N/A	N/A

Building Codes	Test Criteria	Construction/Option Summary
CBC 2025	ICC-ES AC156-24	Galvanized steel

UUT Mounting Details:



BY: Mohammad Karim

DATE: 03/17/2026

UUT ceiling suspended with 3/8" Ø cable braces per corner (8 total).

Unit maintained structural integrity and remained operational per manufacturer requirement following shake table test.

All contents were included in the unit per operating conditions.

UUT 18

Test Report# Q1653.00 (UUT-26)

Manufacturer: Mitsubishi Electric Corporation
Model Line: P-Type & City Multi Units
Model Number: PLFY-P48NEMU-E
Serial Number: N/A
Product Type: Air Conditioning Unit - Split

Highest Passed Test Level								
S _{DS}	z/h	R _μ	H _f	I _p	A _{flx-h}	A _{rig-h}	A _{flx-v}	A _{rig-v}
3.00	1.0	1.3	3.5	1.5	4.80	3.23	2.19	0.88
3.28	0.0	1.0	1.0					

Dimensions/Weights			
Depth (in)	Width (in)	Height (in)	Weight (lbs.)
33.1	33.1	11.8	60

Lowest Natural Frequency (Hz)		
Front-Back	Side-Side	Vertical
N/A	N/A	N/A

Building Codes	Test Criteria	Construction/Option Summary
CBC 2025	ICC-ES AC156-24	Galvanized steel, PLP-40EAY Grill

UUT Mounting Details:



UUT ceiling suspended with four (4) 3/8"Ø rods with stiffeners. Each corner had two (2) 1/8"Ø cable braces (8 total). Unit maintained structural integrity and remained operational per manufacturer requirement following shake table test. All contents were included in the unit per operating conditions.

UUT 19

Test Report# Q0028.00 (UUT-10)

Manufacturer: Mitsubishi Electric Corporation
Model Line: P-Type & City Multi Units
Model Number: PLA-A42BA
Serial Number: N/A
Product Type: Air Conditioning Unit - Split

Highest Passed Test Level								
S _{DS}	z/h	R _μ	H _f	I _p	A _{flx-h}	A _{rig-h}	A _{flx-v}	A _{rig-v}
2.00	1.0	1.3	3.5	1.5	3.20	2.15	1.74	0.7
2.61	0.0	1.0	1.0					

Dimensions/Weights			
Depth (in)	Width (in)	Height (in)	Weight (lbs.)
33.1	33.1	11.8	55

Lowest Natural Frequency (Hz)		
Front-Back	Side-Side	Vertical
N/A	N/A	N/A

Building Codes	Test Criteria	Construction/Option Summary
CBC 2025	ICC-ES AC156-24	Galvanized steel

UUT Mounting Details:



UUT ceiling suspended with four (4) 3/8"Ø rods with stiffeners. Each corner had two (2) 1/8"Ø cable braces (8 total). Unit maintained structural integrity and remained operational per manufacturer requirement following shake table test. All contents were included in the unit per operating conditions.

UUT 20

Test Report# Q0028.00 (UUT-6)

Manufacturer: Mitsubishi Electric Corporation
Model Line: P-Type & City Multi Units
Model Number: PEFY-P06NMSU-E
Serial Number: N/A
Product Type: Air Conditioning Unit - Split

Highest Passed Test Level								
S _{DS}	z/h	R _μ	H _f	I _p	A _{flx-h}	A _{rig-h}	A _{flx-v}	A _{rig-v}
2.00	1.0	1.3	3.5	1.5	3.20	2.15	1.58	0.63
2.37	0.0	1.0	1.0					

Dimensions/Weights			
Depth (in)	Width (in)	Height (in)	Weight (lbs.)
27.6	31.1	7.9	42

Lowest Natural Frequency (Hz)		
Front-Back	Side-Side	Vertical
N/A	N/A	N/A

Building Codes	Test Criteria	Construction/Option Summary
CBC 2025	ICC-ES AC156-24	Galvanized steel

UUT Mounting Details:



BY: Mohammad Karim

DATE: 03/17/2026

Ceiling suspended with 1/2" Ø hanger rods and (2) 1/8" Ø cable braces per corner (8 total).
 Unit maintained structural integrity and remained operational per manufacturer requirement following shake table test.
 All contents were included in the unit per operating conditions.

UUT 21

Test Report# Q0028.00 (UUT-1)

Manufacturer: Mitsubishi Electric Corporation
Model Line: P-Type & City Multi Units
Model Number: PEFY-P96NMHU-E
Serial Number: N/A
Product Type: Air Conditioning Unit - Split

Highest Passed Test Level								
S_{DS}	z/h	R_{μ}	H_f	I_p	A_{flx-h}	A_{rig-h}	A_{flx-v}	A_{rig-v}
2.00	1.0	1.3	3.5	1.5	3.20	2.15	1.58	0.63
2.37	0.0	1.0	1.0					

Dimensions/Weights			
Depth (in)	Width (in)	Height (in)	Weight (lbs.)
44.1	49.2	18.6	221

Lowest Natural Frequency (Hz)		
Front-Back	Side-Side	Vertical
N/A	N/A	N/A

Building Codes	Test Criteria	Construction/Option Summary
CBC 2025	ICC-ES AC156-24	Galvanized steel

UUT Mounting Details:



UUT ceiling suspended with four (4) 3/8"Ø rods with stiffeners. Each corner had two (2) 1/8"Ø cable braces (8 total). Unit maintained structural integrity and remained operational per manufacturer requirement following shake table test. All contents were included in the unit per operating conditions.

UUT 22

Test Report# Q0028.00 (UUT-3)

Manufacturer: Mitsubishi Electric Corporation
Model Line: P-Type & S-Type A/C Units
Model Number: PEFY-AF1200CFMR
Serial Number: N/A
Product Type: Air Conditioning Unit - Split

Highest Passed Test Level								
S _{DS}	z/h	R _μ	H _f	I _p	A _{flx-h}	A _{rig-h}	A _{flx-v}	A _{rig-v}
2.00	1.0	1.3	3.5	1.5	3.20	2.15	1.41	0.56
2.11	0.0	1.0	1.0					

Dimensions/Weights			
Depth (in)	Width (in)	Height (in)	Weight (lbs.)
55.1	49.3	18.6	309

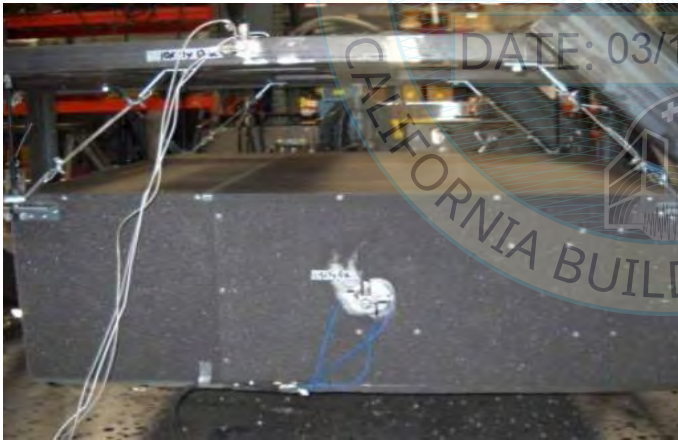
Lowest Natural Frequency (Hz)		
Front-Back	Side-Side	Vertical
N/A	N/A	N/A

Building Codes	Test Criteria	Construction/Option Summary
CBC 2025	ICC-ES AC156-24	Galvanized steel

UUT Mounting Details:

BY: Mohammad Karim

DATE: 03/17/2026



UUT ceiling suspended with four (4) 1/2"Ø rods with stiffeners. Each corner had two (2) 1/8"Ø cable braces (8 total). Unit maintained structural integrity and remained operational per manufacturer requirement following shake table test. All contents were included in the unit per operating conditions.

UUT 23

Test Report# Q1619.0 (UUT-19)

Manufacturer: Mitsubishi Electric Corporation
Model Line: P-Type & City Multi Units
Model Number: PVFY-P12NAMU-E
Serial Number: N/A
Product Type: Air Conditioning Unit - Split

Highest Passed Test Level								
S _{DS}	z/h	R _μ	H _f	I _p	A _{flx-h}	A _{rig-h}	A _{flx-v}	A _{rig-v}
2.85	1.0	1.3	3.5	1.5	4.56	3.06	2.11	0.85
3.15	0.0	1.0	1.0					

Dimensions/Weights			
Depth (in)	Width (in)	Height (in)	Weight (lbs.)
50.3	17.0	21.6	117

Lowest Natural Frequency (Hz)		
Front-Back	Side-Side	Vertical
N/A	N/A	N/A

Building Codes
CBC 2025

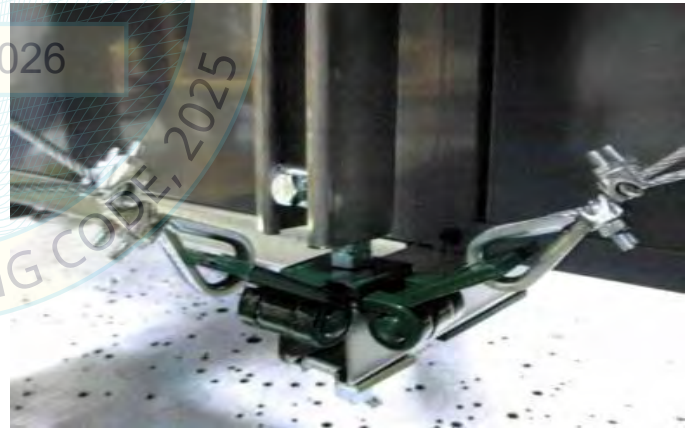
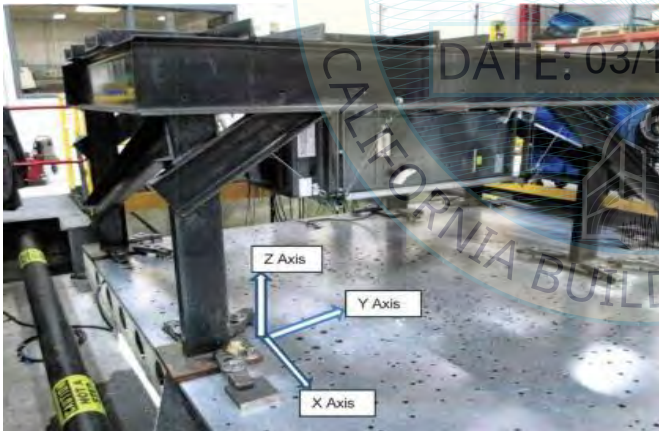
Test Criteria
ICC-ES AC156-24

Construction/Option Summary
Galvanized steel

UUT Mounting Details:

BY: Mohammad Karim

DATE: 03/17/2026



P1000 Unistrut platform with P1356 fittings was ceiling suspended with 3/8" Ø hanger rods, rod stiffeners, and (2) 1/8" Ø cable braces per corner (8 total).
 Unit maintained structural integrity and remained operational per manufacturer requirement following shake table test.
 All contents were included in the unit per operating conditions.

SPECIAL SEISMIC CERTIFICATION UUT SUMMARY

UUT 24

Test Report# Q1619.00 (UUT-20)

Manufacturer: Mitsubishi Electric Corporation
Model Line: P-Type & S-Type A/C Units
Model Number: PVFY-P54AMUE-E
Serial Number: N/A
Product Type: Air Conditioning Unit - Split

Highest Passed Test Level								
S _{DS}	z/h	R _μ	H _f	I _p	A _{flx-h}	A _{rig-h}	A _{flx-v}	A _{rig-v}
2.85	1.0	1.3	3.5	1.5	4.56	3.06	2.11	0.85
3.15	0.0	1.0	1.0					

Dimensions/Weights			
Depth (in)	Width (in)	Height (in)	Weight (lbs.)
59.9	25.0	21.6	227

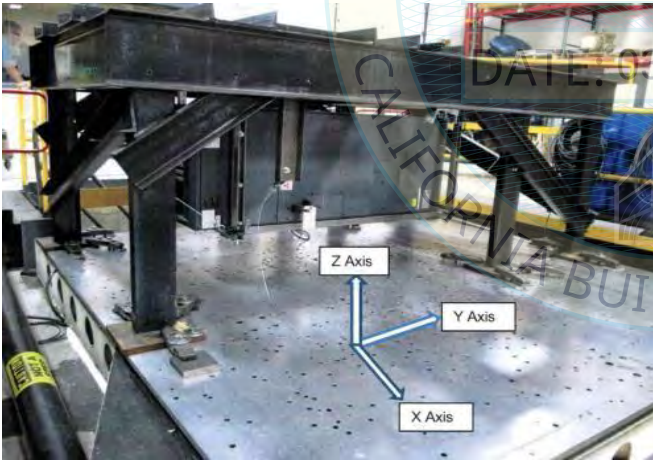
Lowest Natural Frequency (Hz)		
Front-Back	Side-Side	Vertical
N/A	N/A	N/A

Building Codes	Test Criteria	Construction/Option Summary
CBC 2025	ICC-ES AC156-24	Galvanized steel

UUT Mounting Details:

BY: Mohammad Karim

DATE: 03/17/2026



P1000 Unistrut platform with P1356 fittings was ceiling suspended with 3/8" ø hanger rods, rod stiffeners, and (2) 1/8" ø cable braces per corner (8 total).

Unit maintained structural integrity and remained operational per manufacturer requirement following shake table test. All contents were included in the unit per operating conditions.

UUT 25

Test Report# Q0028.00 (UUT-9)

Manufacturer: Mitsubishi Electric Corporation
Model Line: P-Type & City Multi Units
Model Number: CMB-P105NU-G
Serial Number: N/A
Product Type: Air Conditioning Unit - Split

Highest Passed Test Level								
S_{DS}	z/h	R_{μ}	H_f	I_p	A_{flx-h}	A_{rig-h}	A_{flx-v}	A_{rig-v}
2.00	1.0	1.3	3.5	1.5	3.20	2.15	1.74	0.7
2.60	0.0	1.0	1.0					

Dimensions/Weights			
Depth (in)	Width (in)	Height (in)	Weight (lbs.)
17.0	25.6	11.2	72

Lowest Natural Frequency (Hz)		
Front-Back	Side-Side	Vertical
N/A	N/A	N/A

Building Codes	Test Criteria	Construction/Option Summary
CBC 2025	ICC-ES AC156-24	Galvanized steel

UUT Mounting Details:



Suspended with 1/2" \varnothing hanger rods and (2) 1/8" \varnothing cable braces per corner (8 total).
 Unit maintained structural integrity and remained operational per manufacturer requirement following shake table test.
 All contents were included in the unit per operating conditions.

UUT 26

Test Report# Q0028.00 (UUT-12)

Manufacturer: Mitsubishi Electric Corporation
Model Line: P-Type, S-Type, & City Multi
Model Number: CMP-P1016NU-HA
Serial Number: N/A
Product Type: Air Conditioning Unit - Split

Highest Passed Test Level								
S _{DS}	z/h	R _μ	H _f	I _p	A _{flx-h}	A _{rig-h}	A _{flx-v}	A _{rig-v}
2.00	1.0	1.3	3.5	1.5	3.20	2.15	1.67	0.67
2.50	0.0	1.0	1.0					

Dimensions/Weights			
Depth (in)	Width (in)	Height (in)	Weight (lbs.)
20.5	43.8	11.4	162

Lowest Natural Frequency (Hz)		
Front-Back	Side-Side	Vertical
N/A	N/A	N/A

Building Codes
CBC 2025

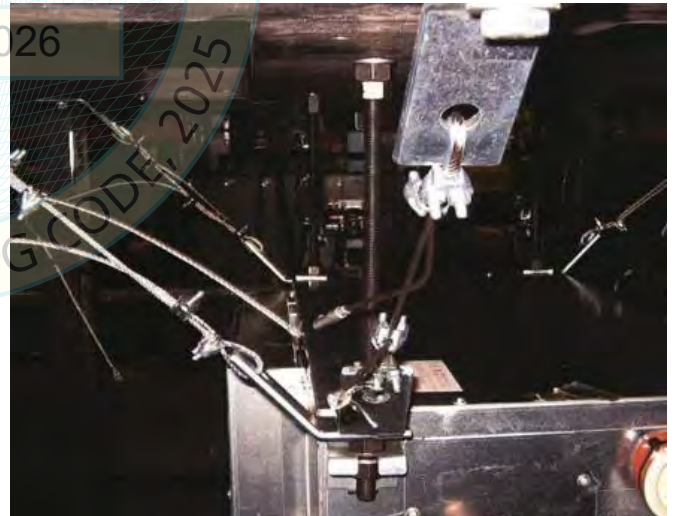
Test Criteria
ICC-ES AC156-24

Construction/Option Summary
Carbon steel

UUT Mounting Details:

BY: Mohammad Karim

DATE: 03/17/2026



UUT was ceiling suspended with 1/2" ø hanger rod and (2) 3/8" ø cable braces per corner (8 total). Unit maintained structural integrity and remained operational per manufacturer requirement following shake table test. All contents were included in the unit per operating conditions.

UUT 29

Test Report# Q1619.0 (UUT-24)

Manufacturer: Mitsubishi Electric Corporation
Model Line: P-Type & City Multi Outdoor Units
Model Number: PQRY-P72TLMU-A
Serial Number: N/A
Product Type: Air Conditioning Unit - Split

Highest Passed Test Level								
S _{DS}	z/h	R _μ	H _f	I _p	A _{flx-h}	A _{rig-h}	A _{flx-v}	A _{rig-v}
2.75	1.0	1.3	3.5	1.5	4.40	2.96	2.11	0.85
3.15	0.0	1.0	1.0					

Dimensions/Weights			
Depth (in)	Width (in)	Height (in)	Weight (lbs.)
21.7	34.7	43.3	380

Lowest Natural Frequency (Hz)		
Front-Back	Side-Side	Vertical
>33.3	26.2	>33.3

Building Codes
CBC 2025

Test Criteria
ICC-ES AC156-24

Construction/Option Summary
Galvanized steel

UUT Mounting Details:



Unit base mounted - rigid with four (4) 3/8" A307 bolts with flat and lock washers (tightened snug tight).
 Unit maintained structural integrity and remained operational per manufacturer requirement following shake table test.
 All contents were included in the unit per operating conditions.

SPECIAL SEISMIC CERTIFICATION UUT SUMMARY

UUT 30

Test Report# Q1619.0 (UUT-25)

Manufacturer: Mitsubishi Electric Corporation
Model Line: P-Type & City Multi Outdoor Units
Model Number: PQHY-P240YLMU-A
Serial Number: N/A
Product Type: Air Conditioning Unit - Split

Highest Passed Test Level								
S _{DS}	z/h	R _μ	H _f	I _p	A _{flx-h}	A _{rig-h}	A _{flx-v}	A _{rig-v}
2.60	1.0	1.3	3.5	1.5	4.16	2.8	1.9	0.76
2.85	0.0	1.0	1.0					

Dimensions/Weights			
Depth (in)	Width (in)	Height (in)	Weight (lbs.)
21.7	34.7	57.1	574

Lowest Natural Frequency (Hz)		
Front-Back	Side-Side	Vertical
5.8	31.2	14.6

Building Codes
CBC 2025

Test Criteria
ICC-ES AC156-24

Construction/Option Summary
Galvanized steel

UUT Mounting Details:



UUT base mounted - rigid with four (4) 1/2" A307 bolts, flat washer, and lock washer (tightened snug tight). Unit maintained structural integrity and remained operational per manufacturer requirement following shake table test. All contents were included in the unit per operating conditions.

UUT 31

Test Report# Q1619.0 (UTT-22)

Manufacturer: Mitsubishi Electric Corporation
Model Line: P-Type & City Multi Outdoor Units
Model Number: PUHY-P72TLMU-A
Serial Number: N/A
Product Type: Air Conditioning Unit - Split

Highest Passed Test Level									
S_{DS}	z/h	R_{μ}	H_f	I_p	A_{flx-h}	A_{rig-h}	A_{flx-v}	A_{rig-v}	
2.75	1.0	1.3	3.5	1.5	4.40	2.96	2.11	0.85	
3.15	0.0	1.0	1.0						

Dimensions/Weights			
Depth (in)	Width (in)	Height (in)	Weight (lbs.)
29.2	36.3	64.9	435

Lowest Natural Frequency (Hz)		
Front-Back	Side-Side	Vertical
6.8	>33.3	>33.3

Building Codes	Test Criteria	Construction/Option Summary
CBC 2025	ICC-ES AC156-24	Carbon steel

UUT Mounting Details:



Base mounted - rigid with four (4) 1/2" A307 bolts, flat washer, and lock washer.

Unit maintained structural integrity and remained operational per manufacturer requirement following shake table test.
 All contents were included in the unit per operating conditions.

UUT 32

Test Report# Q1619.0 (UUT-23)

Manufacturer: Mitsubishi Electric Corporation
Model Line: P-Type & City Multi Outdoor Units
Model Number: PURY-P168YLMU-A
Serial Number: N/A
Product Type: Air Conditioning Unit - Split

Highest Passed Test Level								
S _{DS}	z/h	R _μ	H _f	I _p	A _{flx-h}	A _{rig-h}	A _{flx-v}	A _{rig-v}
2.75	1.0	1.3	3.5	1.5	4.40	2.96	2.11	0.85
3.15	0.0	1.0	1.0					

Dimensions/Weights			
Depth (in)	Width (in)	Height (in)	Weight (lbs.)
29.2	65.0	68.9	702

Lowest Natural Frequency (Hz)		
Front-Back	Side-Side	Vertical
>33.3	6.0	>33.3

Building Codes	Test Criteria	Construction/Option Summary
CBC 2025	ICC-ES AC156-24	Carbon steel

UUT Mounting Details:



UUT base mounted - rigid with six (6) 1/2" ø A307 bolts with 1.063" OD flat and lock washers (tightened snug tight). Unit maintained structural integrity and remained operational per manufacturer requirement following shake table test. All contents were included in the unit per operating conditions.

UUT 33

Test Report# 15373, Rev.1

Manufacturer: Mitsubishi Electric Corporation
Model Line: P-Type & City Multi Outdoor Units
Model Number: PURY-EP168TNU-A
Serial Number: 83W00017
Product Type: Air Conditioning Unit - Split

Highest Passed Test Level								
S _{DS}	z/h	R _μ	H _f	I _p	A _{flx-h}	A _{rig-h}	A _{flx-v}	A _{rig-v}
2.00	1.0	1.3	3.5	1.5	3.20	2.15	1.67	0.67
2.50	0.0	1.0	1.0					

Dimensions/Weights			
Depth (in)	Width (in)	Height (in)	Weight (lbs.)
29.2	68.9	71.6	741

Lowest Natural Frequency (Hz)		
Front-Back	Side-Side	Vertical
8.3	5.8	>33.3

Building Codes
CBC 2025

Test Criteria
ICC-ES AC156-24

Construction/Option Summary
Carbon steel

UUT Mounting Details:



UUT 33 was base mounted rigid with six (6) 1/2"-13 grade 8 bolts with flat washers. Unit maintained structural integrity and remained operational per manufacturer requirement following shake table test. All contents were included in the unit per operating conditions.

UUT 34

Test Report# 15373, Rev.1

Manufacturer: Mitsubishi Electric Corporation
Model Line: P-Type & City Multi Outdoor Units
Model Number: PUHY-EP-192TNU-A
Serial Number: 93P00001
Product Type: Air Conditioning Unit - Split

Highest Passed Test Level								
S _{DS}	z/h	R _μ	H _f	I _p	A _{flx-h}	A _{rig-h}	A _{flx-v}	A _{rig-v}
2.00	1.0	1.3	3.5	1.5	3.20	2.15	1.67	0.67
2.50	0.0	1.0	1.0					

Dimensions/Weights			
Depth (in)	Width (in)	Height (in)	Weight (lbs.)
29.2	68.9	71.6	744.5

Lowest Natural Frequency (Hz)		
Front-Back	Side-Side	Vertical
8.10	5.99	>33.3

Building Codes
CBC 2025

Test Criteria
ICC-ES AC156-24

Construction/Option Summary
Carbon steel

UUT Mounting Details:



UUT 34 was base mounted rigid with six (6) 1/2"-13 grade 8 bolts with flat washers. Unit maintained structural integrity and remained operational per manufacturer requirement following shake table test. All contents were included in the unit per operating conditions.

UUT 35

Test Report# 15373, Rev.1

Manufacturer: Mitsubishi Electric Corporation
Model Line: P-Type & S-Type AC Units
Model Number: CMB-P104NU-J1
Serial Number: 83W00016
Product Type: Air Conditioning Unit - Split

Highest Passed Test Level								
S _{DS}	z/h	R _μ	H _f	I _p	A _{flx-h}	A _{rig-h}	A _{flx-v}	A _{rig-v}
2.00	1.0	1.3	3.5	1.5	3.20	2.15	1.67	0.67
2.50	0.0	1.0	1.0					

Dimensions/Weights			
Depth (in)	Width (in)	Height (in)	Weight (lbs.)
16.0	25.0	10.0	56

Lowest Natural Frequency (Hz)		
Front-Back	Side-Side	Vertical
N/A	N/A	N/A

Building Codes
CBC 2025

Test Criteria
ICC-ES AC156-24

Construction/Option Summary
Carbon steel

UUT Mounting Details:



Ceiling suspended rigid using (4) 3/8" ø A307 hanger rods w/ rod stiffeners (Drop=16-20"), (4) 3/32" ø diagonal cable braces w/ Mason SCB 0/SCBH-0 clips, (12) 3/8" nuts, (8) 3/8" square washers provide by manufacturer in mounting kit.

Unit maintained structural integrity and remained operational per manufacturer requirement following shake table test. All contents were included in the unit per operating conditions.

SPECIAL SEISMIC CERTIFICATION UUT SUMMARY

UUT 36

Test Report# 15373, Rev.1

Manufacturer: Mitsubishi Electric Corporation
Model Line: P-Type & City Multi Outdoor Units
Model Number: CMB-P1016NU-KA1
Serial Number: N/A
Product Type: Air Conditioning Unit - Split

Highest Passed Test Level								
S _{DS}	z/h	R _μ	H _f	I _p	A _{flx-h}	A _{rig-h}	A _{flx-v}	A _{rig-v}
2.00	1.0	1.3	3.5	1.5	3.20	2.15	1.67	0.67
2.50	0.0	1.0	1.0					

Dimensions/Weights			
Depth (in)	Width (in)	Height (in)	Weight (lbs.)
22.0	45.0	10.0	144.5

Lowest Natural Frequency (Hz)		
Front-Back	Side-Side	Vertical
N/A	N/A	N/A

Building Codes
CBC 2025

Test Criteria
ICC-ES AC156-24

Construction/Option Summary
Carbon steel

UUT Mounting Details:



Ceiling suspended rigid using (4) 3/8" A307 hanger rods w/ rod stiffeners (Drop=16-20"), (4) 3/32" diagonal cable braces w/ Mason SCB 0/SCBH-0 clips, (12) 3/8" nuts, (8) 3/8" square washers provide by manufacturer in mounting kit.

Unit maintained structural integrity and remained operational per manufacturer requirement following shake table test. All contents were included in the unit per operating conditions.

SPECIAL SEISMIC CERTIFICATION UUT SUMMARY

UUT 37

Test Report# 15373, Rev.1

Manufacturer: Mitsubishi Electric Corporation
Model Line: P-Type & City Multi Outdoor Units
Model Number: PCA-A42KA7
Serial Number: 8YM00587
Product Type: Air Conditioning Unit - Split

Highest Passed Test Level									
S _{DS}	z/h	R _μ	H _f	I _p	A _{flx-h}	A _{rig-h}	A _{flx-v}	A _{rig-v}	
2.00	1.0	1.3	3.5	1.5	3.20	2.15	1.67	0.67	
2.50	0.0	1.0	1.0						

Dimensions/Weights			
Depth (in)	Width (in)	Height (in)	Weight (lbs.)
26.8	63.0	9.1	87.5

Lowest Natural Frequency (Hz)		
Front-Back	Side-Side	Vertical
N/A	N/A	N/A

Building Codes	Test Criteria	Construction/Option Summary
CBC 2025	ICC-ES AC156-24	Carbon steel and plastic

UUT Mounting Details:



Ceiling suspended rigid using (4) 3/8" A307 hanger rods w/ rod stiffeners (Drop=16-20"), (4) 3/32" diagonal cable braces w/ Mason SC 0/SCBH-0 clips, (12) 3/8" nuts, (4) 3/8" square washers and (4) 3/8" round flat washers. Unit maintained structural integrity and remained operational per manufacturer requirement following shake table test. All contents were included in the unit per operating conditions.

SPECIAL SEISMIC CERTIFICATION UUT SUMMARY

UUT 38

Test Report# 2000559-TR-001-R0(UUT1)

Manufacturer: Mitsubishi Electric Corporation
Model Line: P-Type & S-Type AC Units
Model Number: PURY-EP240TNU-A
Serial Number: 04W00025
Product Type: Air Conditioning Unit - Split

Highest Passed Test Level								
S _{DS}	z/h	R _μ	H _f	I _p	A _{flx-h}	A _{rig-h}	A _{flx-v}	A _{rig-v}
2.00	1.0	1.3	3.5	1.5	3.20	2.15	1.67	0.67
2.50	0.0	1.0	1.0					

Dimensions/Weights			
Depth (in)	Width (in)	Height (in)	Weight (lbs.)
29.2	68.9	71.6	872.5

Lowest Natural Frequency (Hz)		
Front-Back	Side-Side	Vertical
5.39	22.58	>33.3

Building Codes
CBC 2025

Test Criteria
ICC-ES AC156-24

Construction/Option Summary
Carbon steel and plastic

UUT Mounting Details:



UUT base mounted - rigid with six (6) 3/8" Grade 8 bolts with washers and torqued to 25 ft-lbs.
 Unit maintained structural integrity and remained operational per manufacturer requirement following shake table test.
 All contents were included in the unit per operating conditions.

SPECIAL SEISMIC CERTIFICATION UUT SUMMARY

UUT 39

Test Report# 2000559-TR-001-R0(UUT2)

Manufacturer: Mitsubishi Electric Corporation
Model Line: P-Type & S-Type AC Units
Model Number: PUHY-EP240YNU-A
Serial Number: 9YW00008
Product Type: Air Conditioning Unit - Split

Highest Passed Test Level								
S _{DS}	z/h	R _μ	H _f	I _p	A _{flx-h}	A _{rig-h}	A _{flx-v}	A _{rig-v}
2.00	1.0	1.3	3.5	1.5	3.20	2.15	1.67	0.67
2.50	0.0	1.0	1.0					

Dimensions/Weights			
Depth (in)	Width (in)	Height (in)	Weight (lbs.)
29.3	68.9	71.6	887

Lowest Natural Frequency (Hz)		
Front-Back	Side-Side	Vertical
4.88	8.06	12.58

Building Codes
CBC 2025

Test Criteria
ICC-ES AC156-24

Construction/Option Summary
Carbon steel and plastic

UUT Mounting Details:



UUT base mounted - rigid with six (6) 3/8" Grade 8 bolts with washers and torqued to 25 ft-lbs.
 Unit maintained structural integrity and remained operational per manufacturer requirement following shake table test.
 All contents were included in the unit per operating conditions.

UUT 40

Test Report# 2000559-TR-001-R0 (UUT3)

Manufacturer: Mitsubishi Electric Corporation
Model Line: P-Type & S-Type AC Units
Model Number: PKFY-P04NLMU-E
Serial Number: 13M00058
Product Type: Air Conditioning Unit - Split

Highest Passed Test Level								
S_{DS}	z/h	R_{μ}	H_f	I_p	A_{flx-h}	A_{rig-h}	A_{flx-v}	A_{rig-v}
2.00	1.0	1.3	3.5	1.5	3.20	2.15	1.67	0.67
2.50	0.0	1.0	1.0					

Dimensions/Weights			
Depth (in)	Width (in)	Height (in)	Weight (lbs.)
9.3	30.4	11.8	23.5

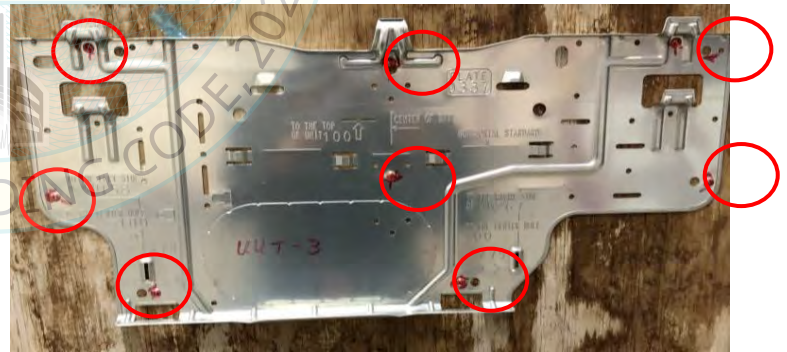
Lowest Natural Frequency (Hz)		
Front-Back	Side-Side	Vertical
N/A	N/A	N/A

Building Codes	Test Criteria	Construction/Option Summary
CBC 2025	ICC-ES AC156-24	Carbon steel and plastic

UUT Mounting Details:

BY: Mohammad Karim

DATE: 03/17/2026



UUT wall mounted - rigid with six (8) #10 self tapping screws. Wall unit attaches to mounting plate (shown above) at the highlighted locations.

Unit maintained structural integrity and remained operational per manufacturer requirement following shake table test. All contents were included in the unit per operating conditions.

UUT 20

Test Report# 2000559-TR-001-R0 (UUT4)

Manufacturer: Mitsubishi Electric Corporation
Model Line: P-Type & S-Type AC Units
Model Number: TPKFY-P018LM140A
Serial Number: N/A
Product Type: Air Conditioning Unit - Split

Highest Passed Test Level								
S _{DS}	z/h	R _μ	H _f	I _p	A _{flx-h}	A _{rig-h}	A _{flx-v}	A _{rig-v}
2.00	1.0	1.3	3.5	1.5	3.20	2.15	1.67	0.67
2.50	0.0	1.0	1.0					

Dimensions/Weights			
Depth (in)	Width (in)	Height (in)	Weight (lbs.)
9.3	35.4	11.8	28

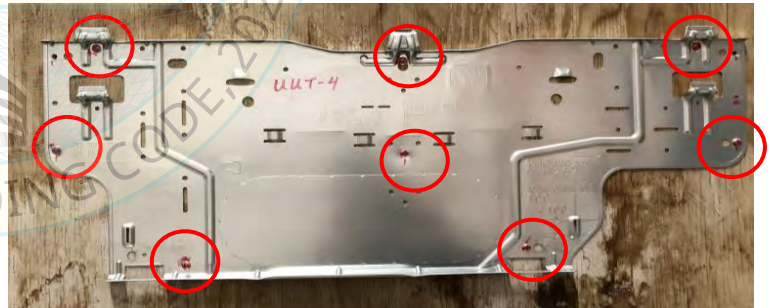
Lowest Natural Frequency (Hz)		
Front-Back	Side-Side	Vertical
N/A	N/A	N/A

Building Codes	Test Criteria	Construction/Option Summary
CBC 2025	ICC-ES AC156-24	Carbon steel and plastic

UUT Mounting Details:

BY: Mohammad Karim

DATE: 03/17/2026



UUT wall mounted - rigid with six (8) #10 self tapping screws. Wall unit attaches to mounting plate (shown above) at the highlighted locations.

Unit maintained structural integrity and remained operational per manufacturer requirement following shake table test. All contents were included in the unit per operating conditions.

UUT 42

Test Report# 2000559-TR-001-R0(UUT5)

Manufacturer: Mitsubishi Electric Corporation
Model Line: P-Type & S-Type AC Units
Model Number: TUMYH0361AK41NA
Serial Number: 14U0017377SM77
Product Type: Air Conditioning Unit - Split

Highest Passed Test Level								
S _{DS}	z/h	R _μ	H _f	I _p	A _{flx-h}	A _{rig-h}	A _{flx-v}	A _{rig-v}
2.00	1.0	1.3	3.5	1.5	3.20	2.15	1.67	0.67
2.50	0.0	1.0	1.0					

Dimensions/Weights			
Depth (in)	Width (in)	Height (in)	Weight (lbs.)
13.0	41.3	52.7	276.5

Lowest Natural Frequency (Hz)		
Front-Back	Side-Side	Vertical
4.61	4.49	12.03

Building Codes
CBC 2025

Test Criteria
ICC-ES AC156-24

Construction/Option Summary
Carbon steel and plastic

UUT Mounting Details:



UUT base mounted - rigid with four (4) 3/8" Grade 8 bolts with respective washers torque to 25 ft-lbs. Unit maintained structural integrity and remained operational per manufacturer requirement following shake table test. All contents were included in the unit per operating conditions.

UUT 43

Test Report# 2000667-TR-001-R0 (UUT43)

Manufacturer: Mitsubishi Electric Corporation
Model Line: P-Type, S-Type & City Multi Outdoor
Model Number: MXZ-SM120TAM
Serial Number: N/A
Product Type: Air Conditioning Unit - Split

Highest Passed Test Level									
S _{DS}	z/h	R _μ	H _f	I _p	A _{flx-h}	A _{rig-h}	A _{flx-v}	A _{rig-v}	
2.00	1.0	1.3	3.5	1.5	3.20	2.15	1.67	0.67	
2.50	0.0	1.0	1.0						

Dimensions/Weights			
Depth (in)	Width (in)	Height (in)	Weight (lbs.)
18.0	41.0	65.3	431

Lowest Natural Frequency (Hz)		
Front-Back	Side-Side	Vertical
4.37	6.74	30.96

Building Codes
CBC 2025

Test Criteria
ICC-ES AC156-24

Construction/Option Summary
Carbon steel frame and enclosure

UUT Mounting Details:



UUT43 was base mounted - rigid using four (4) 3/8" grade 8 bolts and washers. Two (2) mounting brackets on the condenser side; torqued to 25ft-lbs.
 Unit maintained structural integrity and remained operational per manufacturer requirement following shake table test.
 All contents were included in the unit per operating conditions.

UUT 44

Test Report# TR231014-01-R0

Manufacturer: Mitsubishi Electric Corporation
Model Line: P-Type, S-Type & City Multi Outdoor
Model Number: QAHV-N136TAU-HPB-BS
Serial Number: 26W00070
Product Type: Air Conditioning Unit - Split

Highest Passed Test Level									
S _{DS}	z/h	R _μ	H _f	I _p	A _{flx-h}	A _{rig-h}	A _{flx-v}	A _{rig-v}	
2.00	1.0	1.3	3.5	1.5	3.20	2.15	1.67	0.67	
2.50	0.0	1.0	1.0						

Dimensions/Weights			
Depth (in)	Width (in)	Height (in)	Weight (lbs.)
48.1	29.9	70.0	889.5

Lowest Natural Frequency (Hz)		
Front-Back	Side-Side	Vertical
5.8	9.5	39.2

Building Codes
CBC 2025

Test Criteria
ICC-ES AC156-24

Construction/Option Summary
Carbon steel enclosure

UUT Mounting Details:



UUT mounted to fixture on shake table with four (4) Grade 8 5/8" bolts with washers.
 Unit maintained structural integrity and remained operational per manufacturer requirement following shake table test.
 All contents were included in the unit per operating conditions.

UUT 45

Test Report# TR231014-01-R0

Manufacturer: Mitsubishi Electric Corporation
Model Line: P-Type, S-Type & City Multi Outdoor
Model Number: QAHV-N136YAU-HPB-BS
Serial Number: 21W00006
Product Type: Air Conditioning Unit - Split

Highest Passed Test Level									
S_{DS}	z/h	R_{μ}	H_f	I_p	A_{flx-h}	A_{rig-h}	A_{flx-v}	A_{rig-v}	
2.00	1.0	1.3	3.5	1.5	3.20	2.15	1.67	0.67	
2.50	0.0	1.0	1.0						

Dimensions/Weights			
Depth (in)	Width (in)	Height (in)	Weight (lbs.)
48.1	29.9	70.0	931

Lowest Natural Frequency (Hz)		
Front-Back	Side-Side	Vertical
5.5	9.0	19.2

Building Codes	Test Criteria	Construction/Option Summary
CBC 2025	ICC-ES AC156-24	Carbon steel enclosure

UUT Mounting Details:



UUT mounted to fixture on shake table with four (4) Grade 8 5/8" bolts with washers.
 Unit maintained structural integrity and remained operational per manufacturer requirement following shake table test.
 All contents were included in the unit per operating conditions.

SPECIAL SEISMIC CERTIFICATION UUT SUMMARY

UUT 46

Test Report# TR231014-01-R0

Manufacturer: Mitsubishi Electric Corporation
Model Line: P-Type, S-Type & City Multi Outdoor
Model Number: TCMBM0108VA11N4
Serial Number: 21W000037GGU05
Product Type: Air Conditioning Unit - Split

Highest Passed Test Level									
S _{DS}	z/h	R _μ	H _f	I _p	A _{flx-h}	A _{rig-h}	A _{flx-v}	A _{rig-v}	
2.00	1.0	1.3	3.5	1.5	3.20	2.15	1.67	0.67	
2.50	0.0	1.0	1.0						

Dimensions/Weights			
Depth (in)	Width (in)	Height (in)	Weight (lbs.)
59.9	24.3	11.1	204

Lowest Natural Frequency (Hz)		
Front-Back	Side-Side	Vertical
N/A	N/A	N/A

Building Codes	Test Criteria	Construction/Option Summary
CBC 2025	ICC-ES AC156-24	Carbon steel

UUT Mounting Details:



Unit mounted with four(4) 1/2" threaded rod, stiffeners, channel washers, nuts and Mason SCB/SCBH-1 Braces (8). Unit maintained structural integrity and remained operational per manufacturer requirement following shake table test. All contents were included in the unit per operating conditions.

Model Branding Note: Trane branded unit tested TCMBM0108VA11N4. Identical unit branded Mitsubishi model number is CMB-WP108NU-AA. See Table 4 for all alternate branding model numbers.

UUT 47

Test Report# TR231014-01-R0

Manufacturer: Mitsubishi Electric Corporation
Model Line: P-Type, S-Type & City Multi Outdoor
Model Number: CMB-WP1016NU-AA
Serial Number: 21W00004
Product Type: Air Conditioning Unit - Split

Highest Passed Test Level									
S_{DS}	z/h	R_{μ}	H_f	I_p	A_{flx-h}	A_{rig-h}	A_{flx-v}	A_{rig-v}	
2.00	1.0	1.3	3.5	1.5	3.20	2.15	1.67	0.67	
2.50	0.0	1.0	1.0						

Dimensions/Weights			
Depth (in)	Width (in)	Height (in)	Weight (lbs.)
70.0	24.3	11.0	236

Lowest Natural Frequency (Hz)		
Front-Back	Side-Side	Vertical
N/A	N/A	N/A

Building Codes	Test Criteria	Construction/Option Summary
CBC 2025	ICC-ES AC156-24	Carbon steel

UUT Mounting Details:

BY: Mohammad Karim

DATE: 03/17/2026



Unit mounted with four (4) 1/2" threaded rod, stiffeners, channel washers, nuts and Mason SCB/SCBH-1 Braces (8). Unit maintained structural integrity and remained operational per manufacturer requirement following shake table test. All contents were included in the unit per operating conditions.

SPECIAL SEISMIC CERTIFICATION UUT SUMMARY

UUT 48

Test Report# TR231014-01-R0

Manufacturer: Mitsubishi Electric Corporation
Model Line: P-Type, S-Type & City Multi Outdoor
Model Number: PEFY-WL06NMAU-A
Serial Number: 33R00037
Product Type: Air Conditioning Unit - Split

Highest Passed Test Level									
S _{DS}	z/h	R _μ	H _f	I _p	A _{flx-h}	A _{rig-h}	A _{flx-v}	A _{rig-v}	
2.00	1.0	1.3	3.5	1.5	3.20	2.15	1.67	0.67	
2.50	0.0	1.0	1.0						

Dimensions/Weights			
Depth (in)	Width (in)	Height (in)	Weight (lbs.)
28.8	27.6	9.8	47.5

Lowest Natural Frequency (Hz)		
Front-Back	Side-Side	Vertical
N/A	N/A	N/A

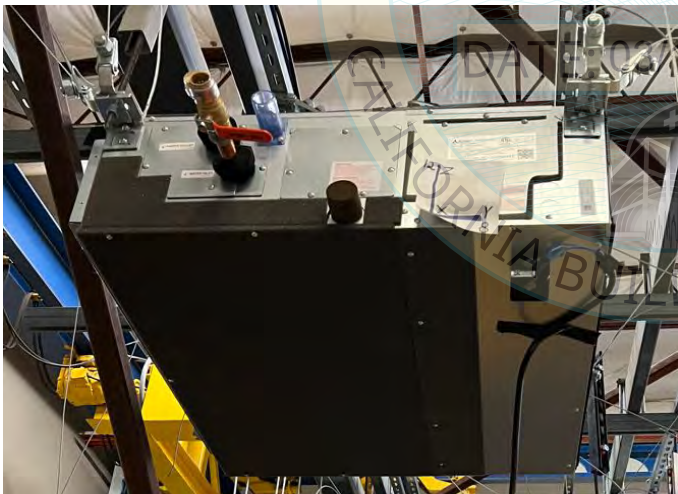
Building Codes
CBC 2025

Test Criteria
ICC-ES AC156-24

Construction/Option Summary
Carbon steel

UUT Mounting Details:

BY: Mohammad Karim



Unit mounted four (4) 3/8" threaded rod, stiffeners, channel washers, nuts and Mason SCB/SCBH-0 Braces (8).
 Unit maintained structural integrity and remained operational per manufacturer requirement following shake table test.
 All contents were included in the unit per operating conditions.

UUT 49

Test Report# TR231014-02-R0

Manufacturer: Mitsubishi Electric Corporation
Model Line: P-Type, S-Type & City Multi Outdoor
Model Number: PEFY-WL48NMAU-A
Serial Number: 36R00027
Product Type: Air Conditioning Unit - Split

Highest Passed Test Level									
S _{DS}	z/h	R _μ	H _f	I _p	A _{flx-h}	A _{rig-h}	A _{flx-v}	A _{rig-v}	
2.00	1.0	1.3	3.5	1.5	3.20	2.15	1.67	0.67	
2.50	0.0	1.0	1.0						

Dimensions/Weights			
Depth (in)	Width (in)	Height (in)	Weight (lbs.)
28.8	63.0	9.8	96

Lowest Natural Frequency (Hz)		
Front-Back	Side-Side	Vertical
N/A	N/A	N/A

Building Codes
CBC 2025

Test Criteria
ICC-ES AC156-24

Construction/Option Summary
Carbon steel

UUT Mounting Details:

BY: Mohammad Karim

DATE: 03/17/2026



Two Mason SCB/SCBH-0 Braces per hanging rod.

Unit mounted four (4) 3/8" threaded rod, stiffeners, channel washers, nuts and Mason SCB/SCBH-0 Braces (8). Unit maintained structural integrity and remained operational per manufacturer requirement following shake table test. All contents were included in the unit per operating conditions.

UUT 50

Test Report# TR251686-01-R1 (UUT1)

Manufacturer: Mitsubishi Electric Corporation
Model Line: P-Type, S-Type, City Multi Outdoor
Model Number: MXZ-SM36NL
Serial Number: 41U0095677RM32
Product Type: Air Conditioning Unit - Split

Highest Passed Test Level									
S _{DS}	z/h	R _μ	H _f	I _p	A _{flx-h}	A _{rig-h}	A _{flx-v}	A _{rig-v}	
2.00	1.0	1.3	3.5	1.5	3.20	2.15	1.67	0.67	
2.50	0.0	1.0	1.0						

Dimensions/Weights			
Depth (in)	Width (in)	Height (in)	Weight (lbs.)
14.0	41.3	52.7	252

Lowest Natural Frequency (Hz)		
Front-Back	Side-Side	Vertical
6.93	4.85	29.13

Building Codes
CBC 2025

Test Criteria
ICC-ES AC156-24

Construction/Option Summary
Carbon steel, R454B Refrigerant

UUT Mounting Details:



UUT 50 base mounted rigid with four (4) 3/8" Grade 8 bolts with washers.
 Unit maintained structural integrity and remained operational per manufacturer requirement following shake table test.
 All contents were included in the unit per operating conditions.

UUT 51

Test Report# TR251686-01-R1 (UUT2)

Manufacturer: Mitsubishi Electric Corporation
Model Line: P-Type, S-Type, City Multi Outdoor
Model Number: MXZ-SM60NL
Serial Number: 42U0225777RS30
Product Type: Air Conditioning Unit - Split

Highest Passed Test Level									
S _{DS}	z/h	R _μ	H _f	I _p	A _{flx-h}	A _{rig-h}	A _{flx-v}	A _{rig-v}	
2.00	1.0	1.3	3.5	1.5	3.20	2.15	1.67	0.67	
2.50	0.0	1.0	1.0						

Dimensions/Weights			
Depth (in)	Width (in)	Height (in)	Weight (lbs.)
14.0	41.3	52.7	282.5

Lowest Natural Frequency (Hz)		
Front-Back	Side-Side	Vertical
6.86	4.48	>33.3

Building Codes
CBC 2025

Test Criteria
ICC-ES AC156-24

Construction/Option Summary
Carbon steel, R454B Refrigerant

UUT Mounting Details:



UUT 51 base mounted rigid with four (4) 3/8" Grade 8 bolts with washers.
 Unit maintained structural integrity and remained operational per manufacturer requirement following shake table test.
 All contents were included in the unit per operating conditions.

UUT 52

Test Report# TR251686-01-R1 (UUT3)

Manufacturer: Mitsubishi Electric Corporation
Model Line: P-Type, S-Type, City Multi Outdoor
Model Number: MXZ-SM48NLHZ
Serial Number: 41U0135677RP36
Product Type: Air Conditioning Unit - Split

Highest Passed Test Level								
S _{DS}	z/h	R _μ	H _f	I _p	A _{flx-h}	A _{rig-h}	A _{flx-v}	A _{rig-v}
2.00	1.0	1.3	3.5	1.5	3.20	2.15	1.67	0.67
2.50	0.0	1.0	1.0					

Dimensions/Weights			
Depth (in)	Width (in)	Height (in)	Weight (lbs.)
14.0	41.3	52.7	283

Lowest Natural Frequency (Hz)		
Front-Back	Side-Side	Vertical
6.52	4.15	18.21

Building Codes
CBC 2025

Test Criteria
ICC-ES AC156-24

Construction/Option Summary
Carbon steel, R454B Refrigerant

UUT Mounting Details:



UUT 52 base mounted rigid with four (4) 3/8" Grade 8 bolts with washers.
 Unit maintained structural integrity and remained operational per manufacturer requirement following shake table test.
 All contents were included in the unit per operating conditions.

UUT 53

Test Report# TR251686-01-R1 (UUT3)

Manufacturer: Mitsubishi Electric Corporation
Model Line: P-Type, S-Type, City Multi Outdoor
Model Number: PUZ-AK24NLHZ
Serial Number: 42U009907H1LA1
Product Type: Air Conditioning Unit - Split

Highest Passed Test Level								
S _{DS}	z/h	R _μ	H _f	I _p	A _{flx-h}	A _{rig-h}	A _{flx-v}	A _{rig-v}
2.00	1.0	1.3	3.5	1.5	3.20	2.15	1.67	0.67
2.50	0.0	1.0	1.0					

Dimensions/Weights			
Depth (in)	Width (in)	Height (in)	Weight (lbs.)
14.0	41.3	52.7	231.5

Lowest Natural Frequency (Hz)		
Front-Back	Side-Side	Vertical
7.99	5.02	>33.3

Building Codes	Test Criteria	Construction/Option Summary
CBC 2025	ICC-ES AC156-24	Carbon steel, R454B Refrigerant

UUT Mounting Details:



UUT 53 base mounted rigid with four (4) 3/8" Grade 8 bolts with washers.
 Unit maintained structural integrity and remained operational per manufacturer requirement following shake table test.
 All contents were included in the unit per operating conditions.

SPECIAL SEISMIC CERTIFICATION UUT SUMMARY

UUT 54

Test Report# TR251686-01-R1 (UUT4)

Manufacturer: Mitsubishi Electric Corporation
Model Line: P-Type, S-Type, City Multi Outdoor
Model Number: PUZ-AK48NLHZ
Serial Number: 42U0000617H1N58
Product Type: Air Conditioning Unit - Split

Highest Passed Test Level								
S _{DS}	z/h	R _μ	H _f	I _p	A _{flx-h}	A _{rig-h}	A _{flx-v}	A _{rig-v}
2.00	1.0	1.3	3.5	1.5	3.20	2.15	1.67	0.67
2.50	0.0	1.0	1.0					

Dimensions/Weights			
Depth (in)	Width (in)	Height (in)	Weight (lbs.)
14.0	41.3	52.7	269.5

Lowest Natural Frequency (Hz)		
Front-Back	Side-Side	Vertical
7.67	4.74	>33.3

Building Codes
CBC 2025

Test Criteria
ICC-ES AC156-24

Construction/Option Summary
Carbon steel, R454B Refrigerant

UUT Mounting Details:



UUT 54 base mounted rigid with four (4) 3/8" Grade 8 bolts with washers.
 Unit maintained structural integrity and remained operational per manufacturer requirement following shake table test.
 All contents were included in the unit per operating conditions.

UUT 55

Test Report# TR251686-01-R1 (UUT6)

Manufacturer: Mitsubishi Electric Corporation
Model Line: P-Type, S-Type, City Multi Outdoor
Model Number: PUZ-AK60NL
Serial Number: 4ZU0000617H1M58
Product Type: Air Conditioning Unit - Split

Highest Passed Test Level									
S_{DS}	z/h	R_{μ}	H_f	I_p	A_{flx-h}	A_{rig-h}	A_{flx-v}	A_{rig-v}	
2.00	1.0	1.3	3.5	1.5	3.20	2.15	1.67	0.67	
2.50	0.0	1.0	1.0						

Dimensions/Weights			
Depth (in)	Width (in)	Height (in)	Weight (lbs.)
14.0	41.3	52.7	270

Lowest Natural Frequency (Hz)		
Front-Back	Side-Side	Vertical
3.62	6.79	32.44

Building Codes
CBC 2025

Test Criteria
ICC-ES AC156-24

Construction/Option Summary
Carbon steel, R454B Refrigerant

UUT Mounting Details:



UUT 55 base mounted rigid with four (4) 3/8" Grade 8 bolts with washers.
 Unit maintained structural integrity and remained operational per manufacturer requirement following shake table test.
 All contents were included in the unit per operating conditions.

UUT 56

Test Report# TR251686-01-R1 (UUT7)

Manufacturer: Mitsubishi Electric Corporation
Model Line: P-Type, S-Type & City Multi Outdoor
Model Number: PCA-AK24NL
Serial Number: 51M0003765TQC0
Product Type: Air Conditioning Unit - Split

Highest Passed Test Level									
S _{DS}	z/h	R _μ	H _f	I _p	A _{flx-h}	A _{rig-h}	A _{flx-v}	A _{rig-v}	
2.00	1.0	1.3	3.5	1.5	3.20	2.15	1.67	0.67	
2.50	0.0	1.0	1.0						

Dimensions/Weights			
Depth (in)	Width (in)	Height (in)	Weight (lbs.)
27.0	47.5	9.1	69.5

Lowest Natural Frequency (Hz)		
Front-Back	Side-Side	Vertical
N/A	N/A	N/A

Building Codes
CBC 2025

Test Criteria
ICC-ES AC156-24

Construction/Option Summary
Carbon steel and plastic

UUT Mounting Details:



UUT 56 ceiling mounted - rigid with four (4) A36 3/8" threaded rod with rod stiffeners and two (2) Mason UCC seismic rod clamps on each rod. Eight (8) Mason cable braces SCB/SCBH-0 with 3/32" diameter cable used, two (2) per rod. Rod attached to bracket with two (2) 3/8 nuts and two strut washers. Unit maintained structural integrity and remained operational per manufacturer requirement following shake table test. All contents were included in the unit per operating conditions.

UUT 56

Test Report# TR251686-01-R1 (UUT7)

Seismic Modification

Modifications were made to UUT 56 prior to seismic test. Three (3) hex head self-drilling screws $\frac{1}{4}$ " x $\frac{3}{4}$ " were added to each bracket, shown below in Figure 1. Additionally, two plastic zip ties were used in addition to the manufacturers provided nylon ties on the fan screen, shown in Figure 2. Manufacturer provided shown in blue, additional plastic zip ties shown in red.



Figure 1

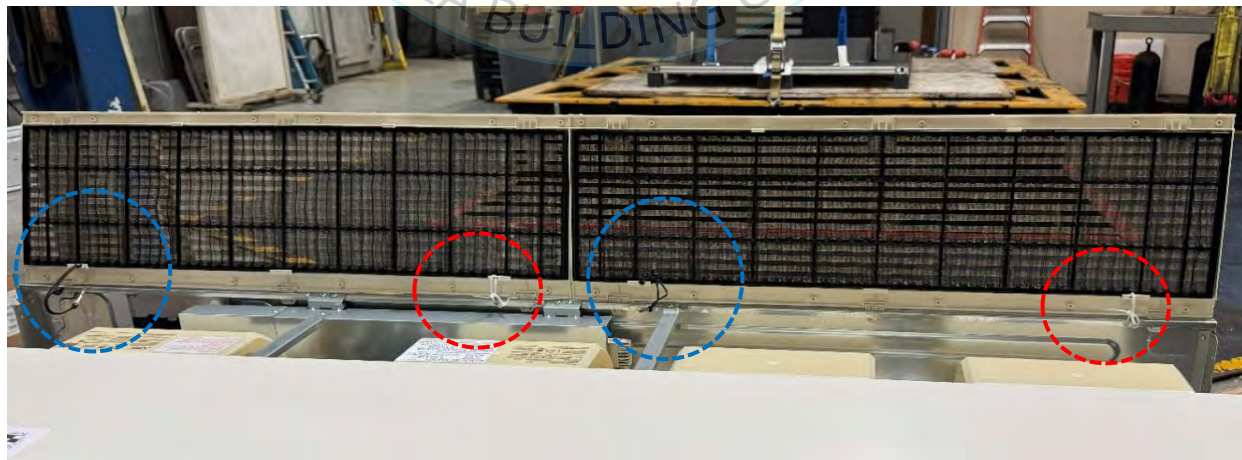


Figure 2

SPECIAL SEISMIC CERTIFICATION UUT SUMMARY

UUT 57

Test Report# TR251686-01-R1 (UUT8)

Manufacturer: Mitsubishi Electric Corporation
Model Line: P-Type, S-Type & City Multi Outdoor
Model Number: PCA-AK42NL
Serial Number: 55M0024665TQC3
Product Type: Air Conditioning Unit - Split

Highest Passed Test Level									
S _{DS}	z/h	R _μ	H _f	I _p	A _{flx-h}	A _{rig-h}	A _{flx-v}	A _{rig-v}	
2.00	1.0	1.3	3.5	1.5	3.20	2.15	1.67	0.67	
2.50	0.0	1.0	1.0						

Dimensions/Weights			
Depth (in)	Width (in)	Height (in)	Weight (lbs.)
27.0	63.0	9.1	88

Lowest Natural Frequency (Hz)		
Front-Back	Side-Side	Vertical
N/A	N/A	N/A

Building Codes
CBC 2025

Test Criteria
ICC-ES AC156-24

Construction/Option Summary
Carbon steel and plastic

UUT Mounting Details:



UUT 57 ceiling mounted - rigid with four (4) A36 3/8" threaded rod with rod stiffeners and two (2) Mason UCC seismic rod clamps on each rod. Eight (8) Mason cable braces SCB/SCBH-0 with 3/32" diameter cable used, two (2) per rod. Rod attached to bracket with two (2) 3/8 nuts and two strut washers. Unit maintained structural integrity and remained operational per manufacturer requirement following shake table test. All contents were included in the unit per operating conditions.

UUT 57

Test Report# TR251686-01-R1 (UUT8)

Seismic Modification

Modifications were made to UUT 57 prior to seismic test. Three (3) hex head self-drilling screws $\frac{1}{4}$ " x $\frac{3}{4}$ " were added to each bracket, shown below in Figure 1. Additionally, two plastic zip ties were used in addition to the manufacturers provided nylon ties on the fan screen, shown in Figure 2. Manufacturer provided shown in blue, additional plastic zip ties shown in red.



Figure 1

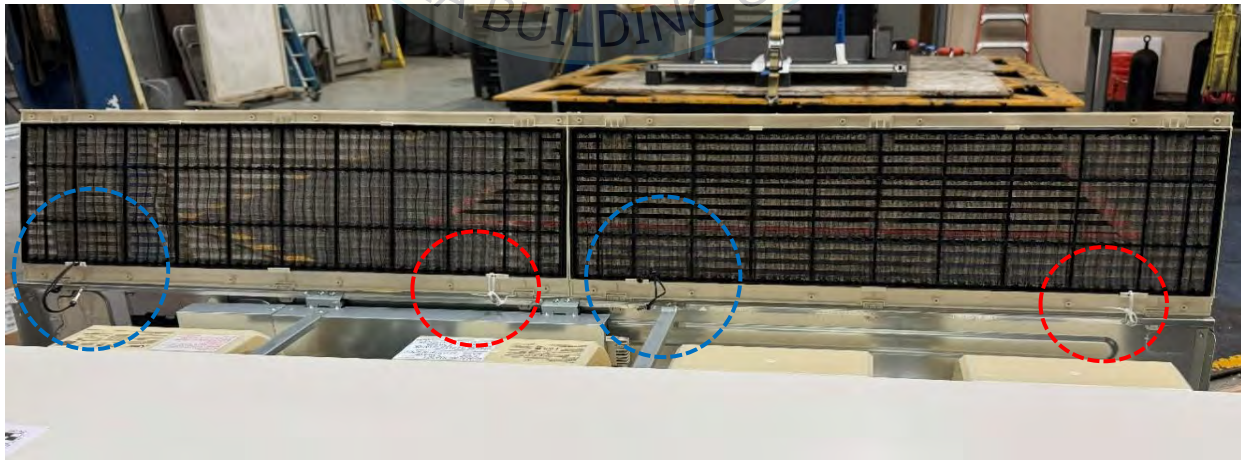


Figure 2

SPECIAL SEISMIC CERTIFICATION UUT SUMMARY

UUT 58

Test Report# TR251686-01-R1 (UUT9)

Manufacturer: Mitsubishi Electric Corporation
Model Line: P-Type, S-Type & City Multi Outdoor
Model Number: PEAD-AA09NL
Serial Number: 53R0050330P315
Product Type: Air Conditioning Unit - Split

Highest Passed Test Level									
S _{DS}	z/h	R _μ	H _f	I _p	A _{flx-h}	A _{rig-h}	A _{flx-v}	A _{rig-v}	
2.00	1.0	1.3	3.5	1.5	3.20	2.15	1.67	0.67	
2.50	0.0	1.0	1.0						

Dimensions/Weights			
Depth (in)	Width (in)	Height (in)	Weight (lbs.)
28.9	35.4	9.9	58

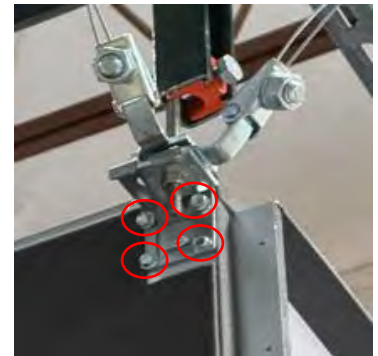
Lowest Natural Frequency (Hz)		
Front-Back	Side-Side	Vertical
N/A	N/A	N/A

Building Codes
CBC 2025

Test Criteria
ICC-ES AC156-24

Construction/Option Summary
Carbon Steel

UUT Mounting Details:



UUT 58 ceiling mounted - rigid with four (4) A36 3/8" threaded rod with rod stiffeners and two (2) Mason UCC seismic rod clamps on each rod. Eight (8) Mason cable braces SCB/SCBH-0 with 3/32" diameter cable used, two (2) per rod. Rod attached to bracket with two (2) 3/8 nuts and two strut washers.

Each mounting bracket was modified with the addition of four (4) #14-3/4" self drilling screws added. Unit maintained structural integrity and remained operational per manufacturer requirement following shake table test.

UUT 59

Test Report# TR251686-01-R1 (UUT10)

Manufacturer: Mitsubishi Electric Corporation
Model Line: P-Type, S-Type & City Multi Outdoor
Model Number: PEAD-AA42NL
Serial Number: 51R00109
Product Type: Air Conditioning Unit - Split

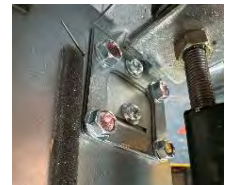
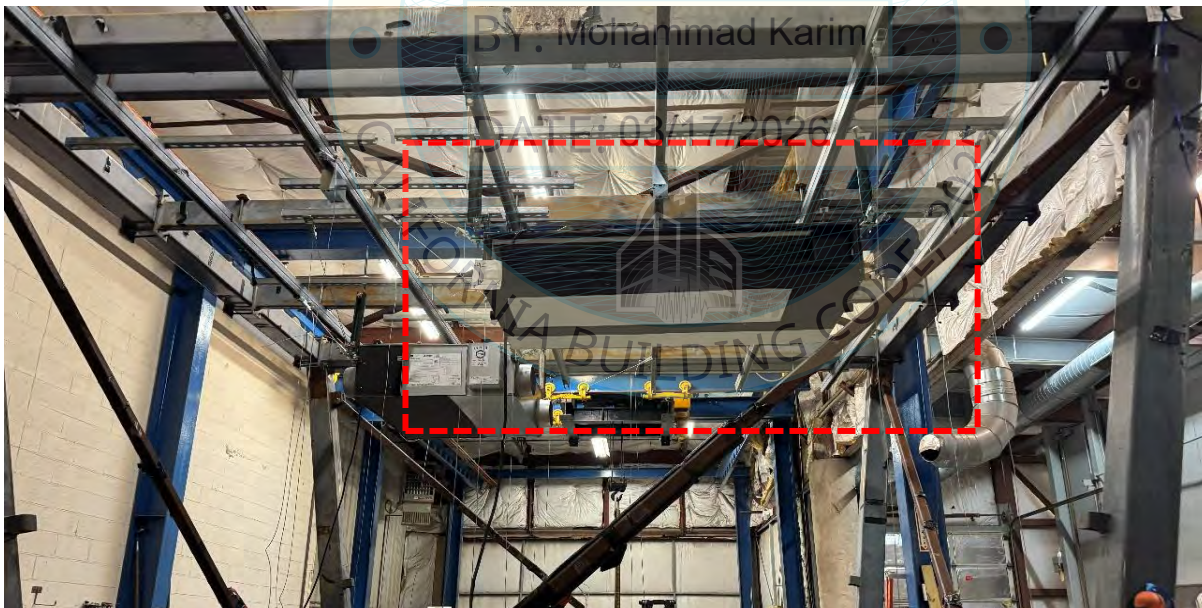
Highest Passed Test Level									
S_{DS}	z/h	R_{μ}	H_f	I_p	A_{flx-h}	A_{rig-h}	A_{flx-v}	A_{rig-v}	
2.00	1.0	1.3	3.5	1.5	3.20	2.15	1.67	0.67	
2.50	0.0	1.0	1.0						

Dimensions/Weights			
Depth (in)	Width (in)	Height (in)	Weight (lbs.)
28.9	55.2	9.9	86

Lowest Natural Frequency (Hz)		
Front-Back	Side-Side	Vertical
N/A	N/A	N/A

Building Codes	Test Criteria	Construction/Option Summary
CBC 2025	ICC-ES AC156-24	Carbon Steel

UUT Mounting Details:



UUT 59 ceiling mounted - rigid with four (4) A36 3/8" threaded rod with rod stiffeners and two (2) Mason UCC seismic rod clamps on each rod. Eight (8) Mason cable braces SCB/SCBH-0 with 3/32" diameter cable used, two (2) per rod. Rod attached to bracket with two (2) 3/8 nuts and two strut washers.

Each mounting bracket was modified with the addition of four (4) #14-3/4" self drilling screws added. Unit maintained structural integrity and remained operational per manufacturer requirement following shake table test. All contents were included in the unit per operating conditions.

SPECIAL SEISMIC CERTIFICATION UUT SUMMARY

UUT 60

Test Report# TR251686-01-R1 (UUT11)

Manufacturer: Mitsubishi Electric Corporation
Model Line: P-Type, S-Type & City Multi Outdoor
Model Number: PLA-AE48NL
Serial Number: 51M0001765TQA6
Product Type: Air Conditioning Unit - Split

Highest Passed Test Level									
S _{DS}	z/h	R _μ	H _f	I _p	A _{flx-h}	A _{rig-h}	A _{flx-v}	A _{rig-v}	
2.00	1.0	1.3	3.5	1.5	3.20	2.15	1.67	0.67	
2.50	0.0	1.0	1.0						

Dimensions/Weights			
Depth (in)	Width (in)	Height (in)	Weight (lbs.)
33.1	33.1	11.8	62

Lowest Natural Frequency (Hz)		
Front-Back	Side-Side	Vertical
N/A	N/A	N/A

Building Codes
CBC 2025

Test Criteria
ICC-ES AC156-24

Construction/Option Summary
Carbon steel and plastic and cassette cover PN: EH19-MPAS-LB

UUT Mounting Details:



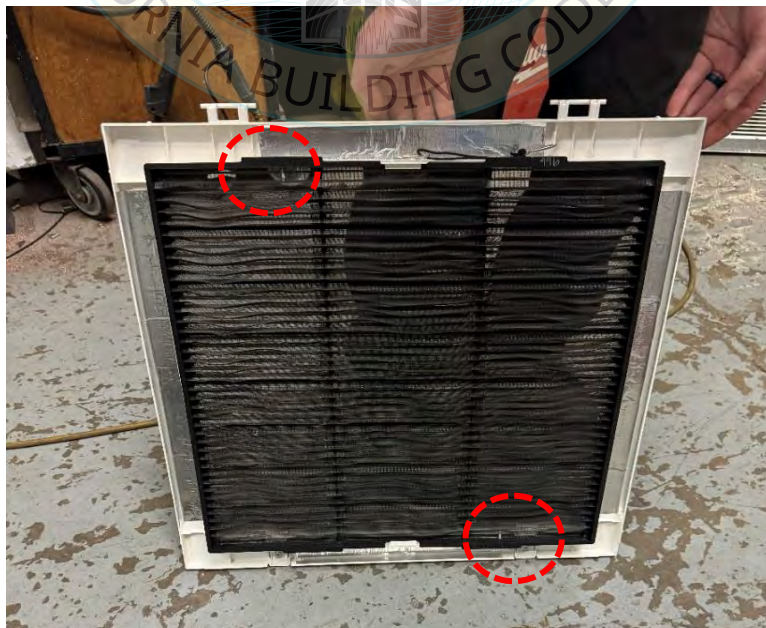
UUT 60 ceiling mounted - rigid with four (4) A36 3/8" threaded rod with rod stiffeners and two (2) Mason UCC seismic rod clamps on each rod. Eight (8) Mason cable braces SCB/SCBH-0 with 3/32" diameter cable used, two (2) per rod. Rod attached to bracket with two (2) 3/8 nuts and two strut washers. Unit maintained structural integrity and remained operational per manufacturer requirement following shake table test. All contents were included in the unit per operating conditions.

UUT 60

Test Report# TR251686-01-R1 (UUT11)

Seismic Modifications:

An additional lanyard was added to cover. These lanyards are in the cover kit provided by the manufacturer. The second lanyard was added to the right side. Additionally Two (2) Tekes #8 - 3/4" flat head self drilling screw was added to hold the filter into the cover.



UUT 61

Test Report# TR251686-01-R1 (UUT12)

Manufacturer: Mitsubishi Electric Corporation
Model Line: P-Type, S-Type & City Multi Outdoor
Model Number: PVFY-L54NAMU-A
Serial Number: 56N0020132P134
Product Type: Air Conditioning Unit - Split

Highest Passed Test Level									
S _{DS}	z/h	R _μ	H _f	I _p	A _{flx-h}	A _{rig-h}	A _{flx-v}	A _{rig-v}	
2.00	1.0	1.3	3.5	1.5	3.20	2.15	1.67	0.67	
2.50	0.0	1.0	1.0						

Dimensions/Weights			
Depth (in)	Width (in)	Height (in)	Weight (lbs.)
59.5	25	21.6	201.5

Lowest Natural Frequency (Hz)		
Front-Back	Side-Side	Vertical
N/A	N/A	N/A

Building Codes	Test Criteria	Construction/Option Summary
CBC 2025	ICC-ES AC156-24	Carbon Steel

UUT Mounting Details:



UUT 61 ceiling mounted - rigid with four (4) A36 1/2" threaded rod with rod stiffeners and two (2) Mason UCC seismic rod clamps on each rod. Eight (8) Mason cable braces SCB/SCBH-1 with 1/8" diameter cable used, two (2) per rod. P1000 Unistrut platform with P1356 fittings was attached to unit with two(2) #14 - 1" Teks on short side and four (4) on the long side, spaced roughly every 12". Image of the frame is shown on the next page. Unit maintained structural integrity and remained operational per manufacturer requirement following shake table test. All contents were included in the unit per operating conditions.

UUT 61

Test Report# TR251686-01-R1 (UUT12)

Unistrut Frame Details:

The air handler was mounted to a frame made of Unistrut and was attached to the base of the unit as shown in the image below.



UUT 62

Test Report# TR251686-01-R1 (UUT13)

Manufacturer: Mitsubishi Electric Corporation
Model Line: P-Type, S-Type & City Multi Outdoor
Model Number: LGH-F300RVX2-E
Serial Number: 24070133546174
Product Type: Air Conditioning Unit - Split

Highest Passed Test Level									
S _{DS}	z/h	R _μ	H _f	I _p	A _{flx-h}	A _{rig-h}	A _{flx-v}	A _{rig-v}	
2.00	1.0	1.3	3.5	1.5	3.20	2.15	1.67	0.67	
2.50	0.0	1.0	1.0						

Dimensions/Weights			
Depth (in)	Width (in)	Height (in)	Weight (lbs.)
40.0	34.9	13.1	75

Lowest Natural Frequency (Hz)		
Front-Back	Side-Side	Vertical
N/A	N/A	N/A

Building Codes
CBC 2025

Test Criteria
ICC-ES AC156-24

Construction/Option Summary
Carbon steel

UUT Mounting Details:



Through bolts M5-Class 8 hex head with washer and nut

UUT 62 ceiling mounted - rigid with four (4) A36 1/2" threaded rod with rod stiffeners and two (2) Mason UCC seismic rod clamps on each rod. Eight (8) Mason cable braces SCB/SCBH-1 with 1/8" diameter cable used, two (2) per rod. Rod attached to bracket with two (2) 1/2" nuts and two strut washers. Three of the four mounting brackets was modified with the addition a through bolt. A M5 Class 8 hex head with washer and nut was used at these locations. The corner with the control panel was not modified with the additional through bold as there was not access due to the control panel.

Unit maintained structural integrity and remained operational per manufacturer requirement following shake table test.

UUT 63

Test Report# TR251686-01-R1 (UUT14)

Manufacturer: Mitsubishi Electric Corporation
Model Line: P-Type, S-Type & City Multi Outdoor
Model Number: LGH-F1200RVX2-E
Serial Number: 24030015546179
Product Type: Air Conditioning Unit - Split

Highest Passed Test Level									
S_{DS}	z/h	R_{μ}	H_f	I_p	A_{flx-h}	A_{rig-h}	A_{flx-v}	A_{rig-v}	
2.00	1.0	1.3	3.5	1.5	3.20	2.15	1.67	0.67	
2.50	0.0	1.0	1.0						

Dimensions/Weights			
Depth (in)	Width (in)	Height (in)	Weight (lbs.)
48.5	45.1	31.8	351

Lowest Natural Frequency (Hz)		
Front-Back	Side-Side	Vertical
N/A	N/A	N/A

Building Codes	Test Criteria	Construction/Option Summary
CBC 2025	ICC-ES AC156-24	Carbon Steel

UUT Mounting Details:



Four (4) #14 - 3/4 self drilling screws added to each bracket



Channel washers notched to fit on mounting bracket.

UUT 63 ceiling mounted - rigid with four (4) A36 1/2" threaded rod with rod stiffeners and two (2) Mason UCC seismic rod clamps on each rod. Eight (8) Mason cable braces SCB/SCBH-1 with 1/8" diameter cable used, two (2) per rod. Rod attached to mounting bracket on unit with two (2) 1/2" nuts and two strut washers. Unit maintained structural integrity and remained operational per manufacturer requirement following shake table test. All contents were included in the unit per operating conditions.

SPECIAL SEISMIC CERTIFICATION UUT SUMMARY

UUT 64

Test Report# TR251686-01-R1 (UUT16)

Manufacturer: Mitsubishi Electric Corporation
Model Line: P-Type, S-Type & City Multi Outdoor
Model Number: TLGHF1500RVXT02A
Serial Number: 25040009546187
Product Type: Air Conditioning Unit - Split

Highest Passed Test Level									
S _{DS}	z/h	R _μ	H _f	I _p	A _{flx-h}	A _{rig-h}	A _{flx-v}	A _{rig-v}	
2.00	1.0	1.3	3.5	1.5	3.20	2.15	1.67	0.67	
2.50	0.0	1.0	1.0						

Dimensions/Weights			
Depth (in)	Width (in)	Height (in)	Weight (lbs.)
65.1	78.8	19.7	393

Lowest Natural Frequency (Hz)		
Front-Back	Side-Side	Vertical
N/A	N/A	N/A

Building Codes
CBC 2025

Test Criteria
ICC-ES AC156-24

Construction/Option Summary
Carbon steel

UUT Mounting Details:



UUT 64 ceiling mounted - rigid with six (6) A36 1/2" threaded rod with rod stiffeners and two (2) Mason UCC seismic rod clamps on each rod. Eight (8) Mason cable braces SCB/SCBH-1 with 1/8" diameter cable used, two (2) per corner rods. Rod attached to mounting bracket on unit with two (2) 1/2" nuts and two strut washers. Unit maintained structural integrity and remained operational per manufacturer requirement following shake table test. All contents were included in the unit per operating conditions.

UUT 65

Test Report# TR251686-01-R1 (UUT17)

Manufacturer: Mitsubishi Electric Corporation
Model Line: P-Type, S-Type & City Multi Outdoor
Model Number: PKFY-L18NLMU-A
Serial Number: 53M0016465TQLF
Product Type: Air Conditioning Unit - Split

Highest Passed Test Level									
S _{DS}	z/h	R _μ	H _f	I _p	A _{flx-h}	A _{rig-h}	A _{flx-v}	A _{rig-v}	
2.00	1.0	1.3	3.5	1.5	3.20	2.15	1.67	0.67	
2.50	0.0	1.0	1.0						

Dimensions/Weights			
Depth (in)	Width (in)	Height (in)	Weight (lbs.)
9.3	35.4	11.8	24

Lowest Natural Frequency (Hz)		
Front-Back	Side-Side	Vertical
N/A	N/A	N/A

Building Codes

CBC 2025

Test Criteria

ICC-ES AC156-24

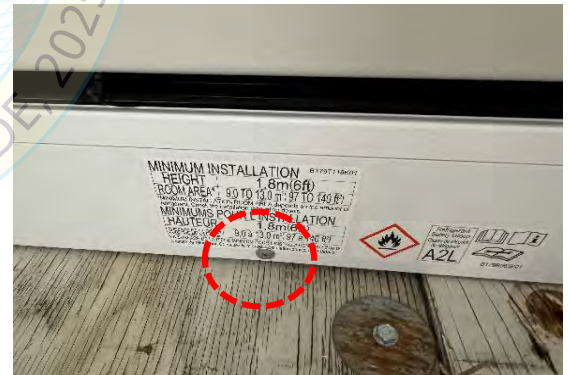
Construction/Option Summary

Carbon steel and plastic

UUT Mounting Details:

BY: Mohammad Karim

DATE: 03/17/2026



UUT 67 wall mounted rigid. The mounting plate was attached to the wall with six (6) #8 x 1-1/4" coarse wood screws. Additionally a #7 - 1/2" Teks screw was added to the bottom of the unit. Unit maintained structural integrity and remained operational per manufacturer requirement following shake table test. All contents were included in the unit per operating conditions.

UUT 66

Test Report# TR251686-01-R1 (UUT18)

Manufacturer: Mitsubishi Electric Corporation
Model Line: P-Type, S-Type & City Multi Outdoor
Model Number: PKFY-L30NKMU-A
Serial Number: 54M0010365TQLP
Product Type: Air Conditioning Unit - Split

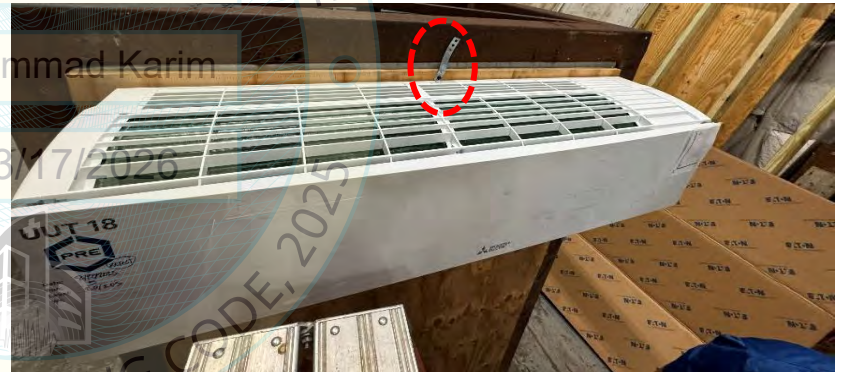
Highest Passed Test Level									
S_{DS}	z/h	R_{μ}	H_f	I_p	A_{flx-h}	A_{rig-h}	A_{flx-v}	A_{rig-v}	
2.00	1.0	1.3	3.5	1.5	3.20	2.15	1.67	0.67	
2.50	0.0	1.0	1.0						

Dimensions/Weights			
Depth (in)	Width (in)	Height (in)	Weight (lbs.)
11.6	46.1	14.4	44.5

Lowest Natural Frequency (Hz)		
Front-Back	Side-Side	Vertical
N/A	N/A	N/A

Building Codes	Test Criteria	Construction/Option Summary
CBC 2025	ICC-ES AC156-24	Carbon steel and plastic

UUT Mounting Details:



UUT 66 wall mounted rigid. The mounting plate was mounted to wall with six (6) #8 x 1-1/4" coarse wood screws. A 6" piece of perforated metal hanger strap was attached at the top of the unit. The metal strap was secured to the wall plate with a (1) #8 x 1" wood screw then threaded through the top of the unit, through an existing opening, and then secured to the wall with #8 wood screw. Additionally a (1) #7-1/2" Teks screw was add to the bottom of the unit. Unit maintained structural integrity and remained operational per manufacturer requirement following shake table test. All contents were included in the unit per operating conditions.

SPECIAL SEISMIC CERTIFICATION UUT SUMMARY

UUT 67

Test Report# TR251686-01-R1 (UUT19)

Manufacturer: Mitsubishi Electric Corporation
Model Line: P-Type, S-Type & City Multi Outdoor
Model Number: CAHV-R136YAU
Serial Number: 54W00086
Product Type: Air Conditioning Unit - Split

Highest Passed Test Level								
S_{DS}	z/h	R_{μ}	H_f	I_p	A_{flx-h}	A_{rig-h}	A_{flx-v}	A_{rig-v}
2.00	1.0	1.3	3.5	1.5	3.20	2.15	1.67	0.67
2.50	0.0	1.0	1.0					

Dimensions/Weights			
Depth (in)	Width (in)	Height (in)	Weight (lbs.)
29.2	68.9	64.9	836

Lowest Natural Frequency (Hz)		
Front-Back	Side-Side	Vertical
7.82	7.93	N/A

Building Codes
CBC 2025

Test Criteria
ICC-ES AC156-24

Construction/Option Summary
Carbon Steel

UUT Mounting Details:



UUT 67 base mounted-rigid with six (6) 1/2" Grade 8 bolts and washers, 3 per each side (long side of unit). Unit maintained structural integrity and remained operational per manufacturer requirement following shake table test. All contents were included in the unit per operating conditions.

UUT 68

Test Report# TR251686-01-R1 (UUT20)

Manufacturer: Mitsubishi Electric Corporation
Model Line: P-Type, S-Type & City Multi Outdoor
Model Number: WUZ-SA24NMZ
Serial Number: 5C00001777GL51
Product Type: Air Conditioning Unit - Split

Highest Passed Test Level									
S _{DS}	z/h	R _μ	H _f	I _p	A _{flx-h}	A _{rig-h}	A _{flx-v}	A _{rig-v}	
2.00	1.0	1.3	3.5	1.5	3.20	2.15	1.67	0.67	
2.50	0.0	1.0	1.0						

Dimensions/Weights			
Depth (in)	Width (in)	Height (in)	Weight (lbs.)
18.9	41.3	40.9	240

Lowest Natural Frequency (Hz)		
Front-Back	Side-Side	Vertical
5.12	6.90	25.11

Building Codes
CBC 2025

Test Criteria
ICC-ES AC156-24

Construction/Option Summary
Carbon Steel

UUT Mounting Details:



UUT 68 base mounted rigid with four (4) 1/2" Grade 8 bolts with washers.
 Unit maintained structural integrity and remained operational per manufacturer requirement following shake table test.
 All contents were included in the unit per operating conditions.

UUT 69

Test Report# TR251686-01-R1 (UUT21)

Manufacturer: Mitsubishi Electric Corporation
Model Line: P-Type, S-Type & City Multi Outdoor
Model Number: WUZ-SA48NMZ
Serial Number: 5C00000677GP51
Product Type: Air Conditioning Unit - Split

Highest Passed Test Level									
S_{DS}	z/h	R_{μ}	H_f	I_p	A_{flx-h}	A_{rig-h}	A_{flx-v}	A_{rig-v}	
2.00	1.0	1.3	3.5	1.5	3.20	2.15	1.67	0.67	
2.50	0.0	1.0	1.0						

Dimensions/Weights			
Depth (in)	Width (in)	Height (in)	Weight (lbs.)
18.9	41.3	40.9	253

Lowest Natural Frequency (Hz)		
Front-Back	Side-Side	Vertical
9.57	10.91	15.67

Building Codes	Test Criteria	Construction/Option Summary
CBC 2025	ICC-ES AC156-24	Carbon steel

UUT Mounting Details:



UUT 69 base mounted rigid with four (4) 1/2" Grade 8 bolts with washers.
 Unit maintained structural integrity and remained operational per manufacturer requirement following shake table test.
 All contents were included in the unit per operating conditions.

UUT 70

Test Report# TR251686-01-R1 (UUT22)

Manufacturer: Mitsubishi Electric Corporation
Model Line: P-Type, S-Type & City Multi Outdoor
Model Number: ERSF-NM6E
Serial Number: 5E00002477QD31
Product Type: Air Conditioning Unit - Split

Highest Passed Test Level									
S_{DS}	z/h	R_{μ}	H_f	I_p	A_{flx-h}	A_{rig-h}	A_{flx-v}	A_{rig-v}	
2.00	1.0	1.3	3.5	1.5	3.20	2.15	1.67	0.67	
2.50	0.0	1.0	1.0						

Dimensions/Weights			
Depth (in)	Width (in)	Height (in)	Weight (lbs.)
14.2	20.9	31.5	112.5

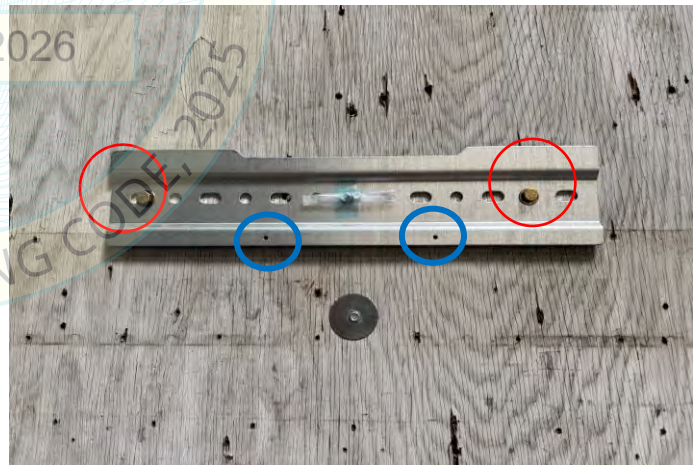
Lowest Natural Frequency (Hz)		
Front-Back	Side-Side	Vertical
N/A	N/A	N/A

Building Codes
CBC 2025

Test Criteria
ICC-ES AC156-24

Construction/Option Summary
Cabon Steel Enclosure

UUT Mounting Details:



UUT 70 was wall mounted - rigid using manufacturer provided mounting plate. The plate with bolted to the wall with two 1/4" hex bolts (circled in red). The unit was placed on the bracket and then secured to the bracket through the back of the enclosure with screws provided in the manufacture's mounting kit. The blue holes show these attachment locations.

Unit maintained structural integrity and remained operational per manufacturer requirement following shake table test. All contents were included in the unit per operating conditions.