



DEPARTMENT OF HEALTH CARE ACCESS AND INFORMATION
OFFICE OF STATEWIDE HOSPITAL PLANNING AND DEVELOPMENT

APPLICATION FOR HCAI SPECIAL SEISMIC
CERTIFICATION PREAPPROVAL (OSP)

OFFICE USE ONLY

APPLICATION #: OSP-0614

HCAI Special Seismic Certification Preapproval (OSP)

Type: ☐ New ☒ Renewal

Manufacturer Information

Manufacturer: Philips Medical Systems DMC GmbH

Manufacturer's Technical Representative: Ming Xiao

Mailing Address: Roentgenstrasse 24, Hamburg, N/A 22335

Telephone: (49403) 497-1230 Email: Ming.Xiao@Philips.com

Product Information

Product Name: DigitalDiagnost C90 and Radiography 7300 C

Product Model Number(s): See attachment

Product Category: Fluoroscopy and Radiography Systems

Product Sub-Category: NA

General Description: Multiple component digital radiography and fluoroscopy medical diagnostic imaging system.

Mounting Description: Several - See Certified Product Tables -

Tested Seismic Enhancements: Seismic enhancements made to the test units and/or modifications required to address anomalies during the tests shall be incorporated into the production units.

Applicant Information

Applicant Company Name: W.E. Gundy & Associates, Inc.

Contact Person: Travis Soppe

Mailing Address: 1199 Shoreline Drive Suite 310, Boise, ID 83702

Telephone: (208) 342-5989 Email: tsoppe@wegai.com

Title: President



**DEPARTMENT OF HEALTH CARE ACCESS AND INFORMATION
OFFICE OF STATEWIDE HOSPITAL PLANNING AND DEVELOPMENT**

California Licensed Structural Engineer Responsible for the Engineering and Test Report(s)

Company Name: W.E. GUNDY & ASSOCIATES INC.

Name: Travis Soppe

California License Number: S6115

Mailing Address: P.O. Box 9121, Boise, ID 83707

Telephone: (208) 342-5989

Email: tsoppe@wegai.com

Certification Method

☐ GR-63-Core

☒ ICC-ES AC156

☐ IEEE 344

☐ IEEE 693

☐ NEBS 3

☐ Other (Please Specify): _____

Testing Laboratory

Company Name: ENVIRONMENTAL TESTING LABORATORIES, INC. (ETL)

Contact Person: Jeremy Lange

Mailing Address: 11034 Indian Trail, Dallas TX 75229-3513

Telephone: (972) 247-9657

Email: jeremy@etldallas.com

Company Name: IABG TEST LABORATORY

Contact Person: Steffen Roedling

Mailing Address: Einsteinstrasse 20, Ottobrunn Bavaria 85521

Telephone: (49896) 088-2052

Email: roedling@iabg.de



DEPARTMENT OF HEALTH CARE ACCESS AND INFORMATION
OFFICE OF STATEWIDE HOSPITAL PLANNING AND DEVELOPMENT

Seismic Parameters

Design Basis of Equipment or Components (F_p/W_p) = See Attachments

SDS (Design spectral response acceleration at short period, g) = 2.00, $z/h = 1.0$ and 2.50, $z/h = 0$

a_p (Amplification factor) = Multiple, see attachment

R_p (Response modification factor) = Multiple, see attachment

Ω_0 (System overstrength factor) = See Attachment

I_p (Importance factor) = 1.5

z/h (Height ratio factor) = 1 and 0

Natural frequencies (Hz) = See Attachment

Overall dimensions and weight = See Attachment

HCAI Approval (For Office Use Only) - Approval Expires on 02/19/2031

Date: 2/19/2025

Name: Mohammad Karim

Title: Supervisor, Health Facilities

Special Seismic Certification Valid Up to: SDS (g) = 2.0

$z/h =$ 1

Condition of Approval (if applicable):


Table 1	PHILIPS MEDICAL SYSTEMS DMC GmbH SPECIAL SEISMIC CERTIFICATION CERTIFIED SYSTEM AND COMPONENTS					 W.E. GUNDY & ASSOCIATES, INC. STRUCTURAL & EARTHQUAKE ENGINEERING			
Systems:	DigitalDiagnost C90 Radiography 7300 C				Manufacturer: Philips Medical Systems DMC GmbH				
System Component ¹	Philips Part Number	Dimensions (in)			Weight (lb)	Mounting	UUT ⁴		
		Width	Length	Height					
Ceiling Suspension CSM Product Family									
Ceiling Suspension CSM3 (Short) Version: Comfort Move (2D)	9890-010-87703	31.0	92.8	45.5-110.7	532	ceiling	UUT _w -2		
Ceiling Suspension CSM3 (Short) Version: Comfort Move (2D / 3D)	9890-010-87703	31.0	92.8	45.5-110.7	532	ceiling	Interpolated		
Ceiling Suspension CSM3 (Long) Version: Comfort Move (2D)	9890-010-87703	31.0	159.0	45.5-110.7	577	ceiling	UUT _w -1		
Ceiling Suspension CSM3 (Long) Version: Comfort Move (2D / 3D)	9890-010-87703	31.0	159.0	45.5-110.7	577	ceiling	Interpolated		
Ceiling Suspension CSM3 (Short) Version: Comfort Position (2D / 3D)	9890-010-87703	31.0	92.8	45.5-110.7	577	ceiling	Interpolated		
Ceiling Suspension CSM3 (Long) Version: Comfort Position (2D / 3D)	9890-010-87703	31.0	159.0	45.5-110.7	622	ceiling	Interpolated		
Ceiling Suspension CSM3 (Long) Version: Comfort Position (3D)	9890-010-87703	31.0	159.0	45.5-110.7	622	ceiling	UUT _v -1		
Digital Table TH Product Family									
Table TH2 Wifi Detector	9848-600-02222	33.5	94.5	20.8-36.4	612 ²	floor	UUT _y -1		
Table TH2 Fixed Detector	9848-600-02222	33.5	94.5	20.8-36.4	615 ²	floor	UUT _y -2		
Table TH2 Wifi Detector	9848-600-02222	33.5	94.5	20.8-36.4	603 ²	floor	UUT _w -3		
¹ All components are manufactured by Philips Medical Systems DMC GmbH unless noted in (). The part numbers listed uniquely identify the type of component, manufacturer, and material of construction for each sub-component within the tested units. ² Table TH2 weights listed do not include 560lb UUT _y -1/2 and 660lb UUT _w -3 simulated patient weight used during the seismic tests. ³ The "a" designation indicates differences in color and software for the identified access point configuration. ⁴ The units were tested at different times and the subscripts on the UUT's reference the following seismic certification test reports: v = TA-B-005165-V2 / w = TAB3-PB-19-020-V1 / x = TAF4-PB-18-082-V1 / y = SQ13-1703-01 / z = SQ13-1701-01									
SEISMIC CERTIFICATION LIMITS									
System Component	Code	S _{DS} (g)	z / h	I _p	a _p	R _p	Ω ₀	F _p / W _p	
Ceiling Suspension CSM	CBC 2022	2.0	1.0	1.50	2.5	2.5	2.0	3.60	
		2.5	0					1.50	
Digital Table TH	CBC 2022	2.0	1.0	1.50	1.0	1.5	1.5	2.40	
		2.5	0					1.13	



Table 1	PHILIPS MEDICAL SYSTEMS DMC GmbH SPECIAL SEISMIC CERTIFICATION CERTIFIED SYSTEM AND COMPONENTS					 W.E. GUNDY & ASSOCIATES, INC. STRUCTURAL & EARTHQUAKE ENGINEERING		
	Systems: DigitalDiagnost C90 Radiography 7300 C		Manufacturer: Philips Medical Systems DMC GmbH					
System Component ¹		Philips Part Number	Dimensions (in)			Weight (lb)	Mounting	UUT ⁴
			Width	Length	Height			
Vertical Stand VS Product Family								
Vertical Stand 2 VS2 Non-Tilting - Fixed Detector		9897-010-01411	28.3	60.6	82.7	326	floor/wall	UUT _x -2A
Vertical Stand 2 VS2 Non-Tilting - Wifi Detector		9897-010-01411	28.3	60.6	82.7	326	floor/wall	UUT _x -2B
Vertical Stand 2 VS2 Tilting - Fixed Detector		9897-010-01411	23.5	35.5	81.9	562	floor/wall	interpolated
Vertical Stand 2 VS2 Tilting - Wifi Detector		9897-010-01411	23.5	35.5	81.9	562	floor/wall	UUT _z -8
Power Distribution								
M-Cabinet CXA		9890-010-88393	19.2	27.6	39.0	236	floor	UUT _y -4
User Interface and Miscelaneous								
AWS-2X PC (ADVANTECH)		4512-201-11781	8.5	10.9	17.6	33	floor	UUT _w -4
WIFI Access Point (ARUBA)		4512 201 12191	5.9	5.9	2.8	1	wall	UUT _x -4
WIFI Access Point (ARUBA)		4512 201 1219a ³ 4512 201 1220a ³	5.9	5.9	2.8	1	wall	same
¹ All components are manufactured by Philips Medical Systems DMC GmbH unless noted in (). The part numbers listed uniquely identify the type of component, manufacturer, and material of construction for each sub-component within the tested units. ² Table TH2 weights listed do not include 560lb UUTy-1/2 and 660lb UUTw-3 simulated patient weight used during the seismic tests. ³ The "a" designation indicates differences in color and software for the identified access point configuration. ⁴ The units were tested at different times and the subscripts on the UUT's reference the following seismic certification test reports: v = TA-B-005165-V2 / w = TAB3-PB-19-020-V1 / x = TAF4-PB-18-082-V1 / y = SQ13-1703-01 / z = SQ13-1701-01								
SEISMIC CERTIFICATION LIMITS								
System Component	Code	S _{DS} (g)	z / h	I _P	a _P	R _P	Ω ₀	F _P / W _P
Vertical Stand VS	CBC 2022	2.0	1.0	1.50	1.0	1.5	1.5	2.40
		2.5	0					1.13
M-Cabinet CXA	CBC 2022	2.0	1.0	1.50	2.5	6.0	2.0	1.50
		2.5	0					1.13
AWS-2X PC	CBC 2022	2.0	1.0	1.50	1.0	2.5	2.0	1.44
		2.5	0					1.13
WIFI Access Point	CBC 2022	2.0	1.0	1.50	1.0	2.5	2.0	1.44
		2.5	0					1.13

Table 2	PHILIPS MEDICAL SYSTEMS DMC GmbH SPECIAL SEISMIC CERTIFICATION CERTIFIED SUBCOMPONENTS					
Systems:	DigitalDiagnost C90 Radiography 7300 C		Manufacturer: Philips Medical Systems DMC GmbH			
Subcomponent	Philips Part Number ¹	Dimensions (in)			Weight (lb)	UUT ²
		Width	Length	Height		
Vertical Stand VS Subcomponent Matrix						
Portable Detector Skyplate Small (pixium 2430 EZ)	9897 010 00843	9.5	1.2	1.0	4	UUT _x -2B
	9897 010 0084a	9.5	1.2	1.0	4	interpolated
	4598 013 7483a	9.5	1.2	1.0	4	interpolated
	4512 134 7330a	9.5	1.2	1.0	4	interpolated
Portable Detector Skyplate Large (pixium 3543 EZ)	4598 012 4298a	13.8	16.9	1.0	7	interpolated
	4512 134 7214a	13.8	16.9	1.0	7	interpolated
	9897 010 0083a	13.8	16.9	1.0	7	interpolated
	9897 010 0268a	13.8	16.9	1.0	7	interpolated
	9897 010 02681	13.8	16.9	1.0	7	UUT _z -8
Fixed Detector (pixium 4343RCE)	4598 009 40141	20.0	19.4	2.0	44	UUT _x -2A
	4598 009 4014a	20.0	19.4	2.0	44	same
	4598 009 4015a	20.0	19.4	2.0	44	same
Digital Table TH / ProxiDiagnost Stand Subcomponent Matrix						
Portable Detector Skyplate Large (pixium 3543 EZ)	4598-012-42982	13.8	16.9	1.0	7	UUT _w -3
	4598-012-4298a	13.8	16.9	1.0	7	interpolated
	4598-134-7214a	13.8	16.9	1.0	7	interpolated
	9897 010 0268a	13.8	16.9	1.0	7	interpolated
	9897 010 02681	13.8	16.9	1.0	7	UUT _y -1
Fixed Detector (pixium 4343RCE)	4598-009-40141	20.0	19.4	2.0	44	UUT _y -2
	4598-009-4014a	20.0	19.4	2.0	44	same
	4598-009-4015a	20.0	19.4	2.0	44	same
¹ "a" designation in Philips part number indicates differences in color, software, ect. for the identified subcomponent. ² The units were tested at different times and the subscripts on the UUT's reference the following seismic certification test reports: w = TAB3-PB-19-020-V1 x = TAF4-PB-18-082-V1 y = SQ13-1703-01 z = SQ13-1701-01						

UUT_v-1

UNIT UNDER TEST (UUT) SUMMARY SHEET



Mounting Details: Rails and connecting parts of the system bolt to the unistrut grid at 27" on center with 2-M10 bolts torqued at 60ft-lbs at each location for a total of 24 bolts. The unistrut grid consisted of MURPO#150969 MPR-41/82/2.0 H-Profiles (Unistrut P1001 equivalent) anchored with 2 - M10 bolts with clamping claws (MURPO 157219) at each intersection to the ceiling fixture framing spaced at 23.6" on center.



Manufacturer: Philips Medical Systems DMC GmbH

Component: Ceiling Suspension CSM3 (Long) Version: Comfort Position (3D)

Model / Serial Number: 9890-010-87703 / 2486104

UUT Function: Digital system for making X-ray exposures of the body.

UUT Description: DigitalDiagnost C90 and Radiography 7300 C ceiling suspension system - long rail

Test Location: IABG mbH, Germany

Test Date: July 2024

Report: TA-B-005165-V3

UUT PROPERTIES

Weight (lb)	Dimensions (inches)			Natural Frequency (Hz)		
	Width	Depth	Height	FB	SS	V
622	31.0"	159.0"	71.9"	NA	NA	NA

The CS system moves laterally, rotates, and extends up and down to accomodate different patients and procedures. The system was tested in the normal operating position with the system horizontally centered, no rotation, and with an extension of 26.4" making the tested height = 71.9".

SEISMIC TEST PARAMETERS

Building Code / Test Criteria	S _{DS} (g)	z / h	I _P	A _{FLX-H} (g)	A _{RIG-H} (g)	A _{FLX-V} (g)	A _{RIG-V} (g)
CBC 2022 / ICC-ES AC156	2.00	1.0	1.5	3.20	2.40		
	2.50	0.0	1.5			1.67	0.67

Note: The unit was full of contents during testing and remained fuctional before and after the ICC-ES AC156 test. The unit maintained structural integrity during and after the ICC-ES AC156 Test.

UUT_w-1

UNIT UNDER TEST (UUT) SUMMARY SHEET



Mounting Details: Rails and connecting parts of the system bolt to the unistrut grid at 25.6" on center with 2-M10 bolts torqued at 30ft-lbs at each location for a total of 24 bolts. The unistrut grid consisted of MURPO#150969 MPR-41/82/2.0 H-Profiles (Unistrut P1001 equivalent) anchored with 2 - M10 bolts with clamping claws (MURPO 157219) at each intersection to the ceiling fixture framing spaced at 23.6" on center.



Manufacturer: Philips Medical Systems DMC GmbH

Component: Ceiling Suspension CSM3 (Long) Version: Comfort Move

Model / Serial Number: 9890-010-87703 / 19 000005

UUT Function: Digital system for making X-ray exposures of the body.

UUT Description: DigitalDiagnost C90 and Radiography 7300 C ceiling suspension system - long rail

Test Location: IABG mbH, Germany

Test Date: February 2019

Report: TAB3-PB-19-020-V1

UUT PROPERTIES

Weight (lb)	Dimensions (inches)			Natural Frequency (Hz)		
	Width	Depth	Height	FB	SS	V
577	31.0"	159.0"	45.5" - 110.7"	NA	NA	NA

The CS system moves laterally, rotates, and extends up and down to accomodate different patients and procedures. The system was tested in the normal operating position with the system horizontally centered, no rotation, and with an extension of 26.4" making the tested height = 71.9".

SEISMIC TEST PARAMETERS

Building Code / Test Criteria	S _{DS} (g)	z / h	I _p	A _{FLX-H} (g)	A _{RIG-H} (g)	A _{FLX-V} (g)	A _{RIG-V} (g)
CBC 2022 / ICC-ES AC156	2.00	1.0	1.5	3.20	2.40		
	2.50	0.0	1.5			1.67	0.67

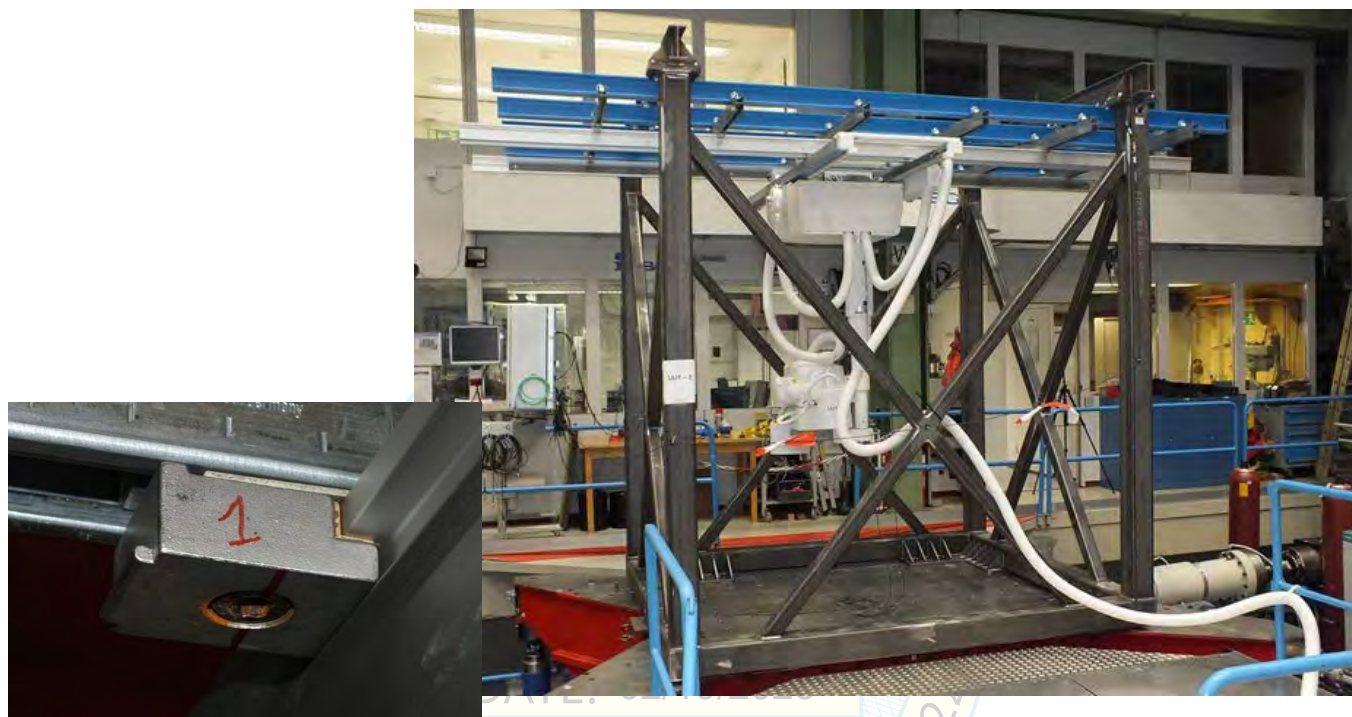
Note: The unit was full of contents during testing and remained fuctional before and after the ICC-ES AC156 test. The unit maintained structural integrity during and after the ICC-ES AC156 Test.

UUT_w-2

UNIT UNDER TEST (UUT) SUMMARY SHEET



Mounting Details: Rails and connecting parts of the system bolt to the unistrut grid at 25.6" on center with 2-M10 bolts torqued at 30ft-lbs at each location for a total of 24 bolts. The unistrut grid consisted of MURPO#150969 MPR-41/82/2.0 H-Profiles (Unistrut P1001 equivalent) anchored with 2 - M10 bolts with clamping claws (MURPO 157219) at each intersection to the ceiling fixture framing spaced at 23.6" on center.



Manufacturer: Philips Medical Systems DMC GmbH

Component: Ceiling Suspension CSM3 (Short) Version: Comfort Move

Model / Serial Number: 9890-010-87703 / 19 000001

UUT Function: Digital system for making X-ray exposures of the body.

UUT Description: DigitalDiagnost C90 and Radiography 7300 C ceiling suspension system - short rail

Test Location: IABG mbH, Germany

Test Date: February 2019

Report: TAB3-PB-19-020-V1

UUT PROPERTIES

Weight (lb)	Dimensions (inches)			Natural Frequency (Hz)		
	Width	Depth	Height	FB	SS	V
532	31.0"	92.8"	45.5" - 110.7"	NA	NA	NA

The CS system moves laterally, rotates, and extends up and down to accommodate different patients and procedures. The system was tested in the normal operating position with the system horizontally centered, no rotation, and with an extension of 26.4" making the tested height = 71.9".

SEISMIC TEST PARAMETERS

Building Code / Test Criteria	S _{DS} (g)	z / h	I _p	A _{FLX-H} (g)	A _{RIG-H} (g)	A _{FLX-V} (g)	A _{RIG-V} (g)
CBC 2022 / ICC-ES AC156	2.00	1.0	1.5	3.20	2.40		
	2.50	0.0	1.5			1.67	0.67

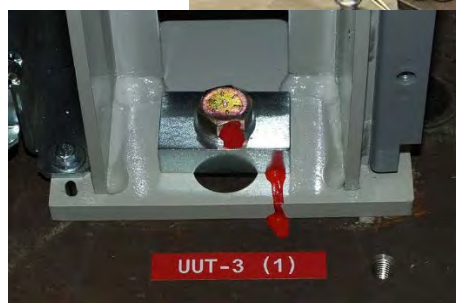
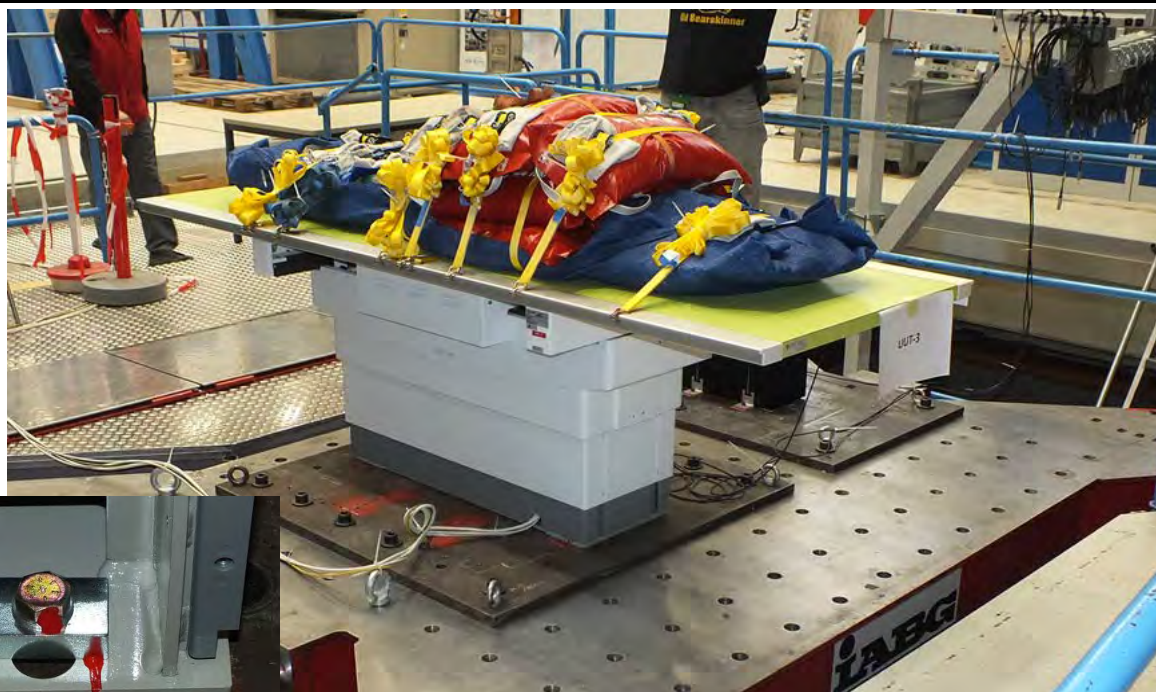
Note: The unit was full of contents during testing and remained functional before and after the ICC-ES AC156 test. The unit maintained structural integrity during and after the ICC-ES AC156 Test.

UUT_w-3

UNIT UNDER TEST (UUT) SUMMARY SHEET



Mounting Details: Rigid floor mounted with 4 - 1/2" grade 8 bolts torqued to 110ft-lbs with 2 x 1 x 0.625" plate washers.



DATE: 02/19/2025

Manufacturer: Philips Medical Systems DMC GmbH

Component: Table TH2 - Wifi Detector **Model / Serial Number:** 9848-600-02222 / 19020008

UUT Function: Motorized patient table and detector system used for X-Ray imaging.

UUT Description: DigitalDiagnost C90 and Radiography 7300 C patient table with installed detector: Wifi Pixium 3543 EZ - 4598-012-42982

Test Location: IABG mbH, Germany **Test Date:** February 2019 **Report:** TAB3-PB-19-020-V1

UUT PROPERTIES

Weight (lb) with Patient	Dimensions (inches)			Natural Frequency (Hz)		
	Width	Depth	Height	FB	SS	V
1,263	33.5"	94.5"	20.8 - 36.4"	4.0	3.0	7.3

The patient table moves laterally both ways and vertically to accommodate different patients and procedures. The system was tested in the normal operating position with the table horizontally centered, a table top height of 29.3", and a total simulated patient weight of 660lbs.

SEISMIC TEST PARAMETERS

Building Code / Test Criteria	S _{DS} (g)	z / h	I _P	A _{FLX-H} (g)	A _{RIG-H} (g)	A _{FLX-V} (g)	A _{RIG-V} (g)
CBC 2022 / ICC-ES AC156	2.00	1.0	1.5	3.20	2.40		
	2.50	0.0	1.5			1.67	0.67

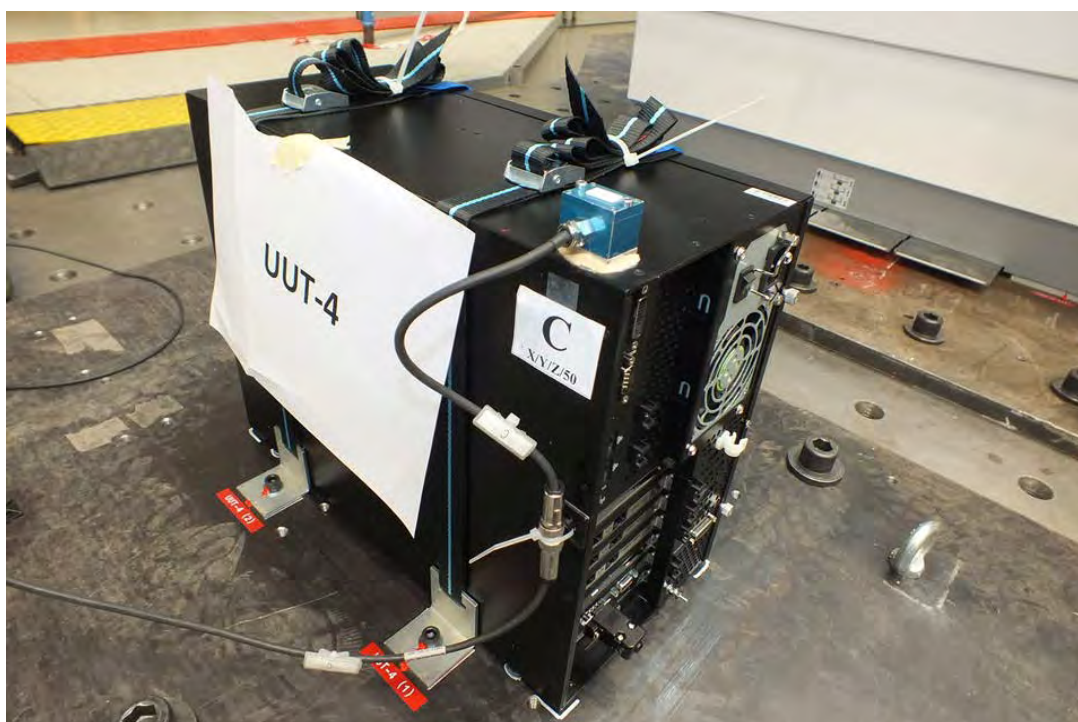
Note: The unit was full of contents during testing and remained functional before and after the ICC-ES AC156 test. The unit maintained structural integrity during and after the ICC-ES AC156 Test.

UUT_w-4

UNIT UNDER TEST (UUT) SUMMARY SHEET



Mounting Details: Rigid floor mounting using Phillips provided seismic restraint kit 4512-134-74741. Seismic restraint kit include a hand tightend cam buckle strap (450lb WLL) looped thru angle brackets on each side of the unit. The angle brackets are attached to the table with individual 3/8" grade 8 bolts.



Manufacturer: ADVANTECH

Component: AWS-2X PC User Interface **Model / Serial Number:** 4512-201-11781 / KSE0149757

UUT Function: Computational processing for image system.

UUT Description: DigitalDiagnost C90 and Radiography 7300 C user interface PC

Test Location: IABG mbH, Germany **Test Date:** February 2019 **Report:** TAB3-PB-19-020-V1

UUT PROPERTIES

Weight (lb) with Patient	Dimensions (inches)			Natural Frequency (Hz)		
	Width	Depth	Height	FB	SS	V
33	8.5"	10.9"	17.6"	> 33	28.1	>33

SEISMIC TEST PARAMETERS

Building Code / Test Criteria	S _{DS} (g)	z / h	I _P	A _{FLX-H} (g)	A _{RIG-H} (g)	A _{FLX-V} (g)	A _{RIG-V} (g)
CBC 2022 / ICC-ES AC156	2.00	1.0	1.5	3.20	2.40		
	2.50	0.0	1.5			1.67	0.67

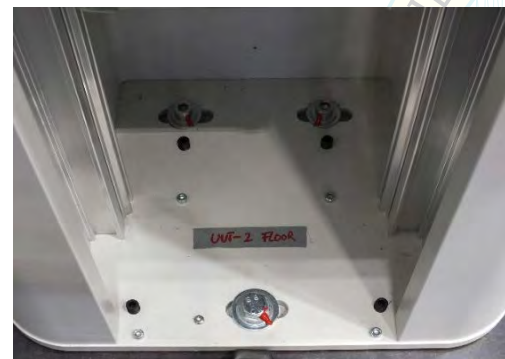
Note: The unit was full of contents during testing and remained functional before and after the ICC-ES AC156 test. The unit maintained structural integrity during and after the ICC-ES AC156 Test.

UUT_x-2A

UNIT UNDER TEST (UUT) SUMMARY SHEET



Mounting Details: Floor/wall mount with 2 - M10 grade 8.8 bolts / washers torqued at 36ft-lb and 1 - M12 grade 8.8 bolt / washer torqued at 62ft-lb to the floor and 2 - M10 grade 10.9 bolts / washers torqued at 53ft-lb to the wall fixture. Electrical box mounted to wall fixture with 4 - M6 grade 8.8 bolts / washer torqued to 10ft-lb.



Manufacturer: Philips Medical Systems DMC GmbH

Component: Vertical Stand VS2 - Fixed Detector

Model / Serial Number: 9897 010 01411

UUT Function: Vertical X-Ray imaging system

UUT Description: Component of DigitalDiagnost C90 and Radiography 7300 C system with fixed detector (Pixium TX4343RCE - 4598 009 40141) and electrical box (4598-012-06871).

Test Location: IABG mbH, Germany

Test Date: February 2018

Report: TAF4-PB-18-082-V1

UUT PROPERTIES

Weight (lb)	Dimensions (inches)			Natural Frequency (Hz)		
	Width	Depth	Height	FB	SS	V
326	28.3"	60.6"	82.7"	> 33	28.9	> 33

SEISMIC TEST PARAMETERS

Building Code / Test Criteria	S _{DS} (g)	z / h	I _P	A _{FLX-H} (g)	A _{RIG-H} (g)	A _{FLX-V} (g)	A _{RIG-V} (g)
CBC 2022 / ICC-ES AC156	2.00	1.0	1.5	3.20	2.40		
	2.50	0.0	1.5			1.67	0.67

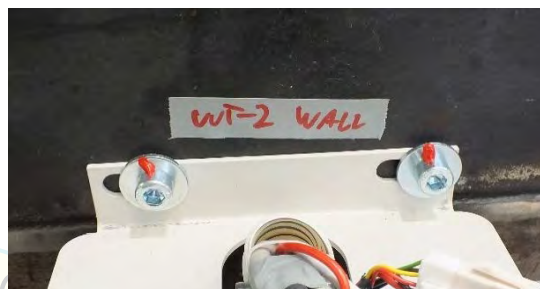
Note: The unit was full of contents during testing and remained functional before and after the ICC-ES AC156 test. The unit maintained structural integrity during and after the ICC-ES AC156 Test.

UUT_x-2B

UNIT UNDER TEST (UUT) SUMMARY SHEET



Mounting Details: Floor/wall mount with 2 - M10 grade 8.8 bolts / washers torqued at 36ft-lb and 1 - M12 grade 8.8 bolt / washer torqued at 62ft-lb to the floor and 2 - M10 grade 10.9 bolts / washers torqued at 53ft-lb to the wall fixture. Electrical box mounted to wall fixture with 4 - M6 grade 8.8 bolts / washer torqued to 10ft-lb.



Manufacturer: Philips Medical Systems DMC GmbH

Component: Vertical Stand VS2 - Wifi Detector

Model / Serial Number: 9897 010 01411

UUT Function: Vertical X-Ray imaging system

UUT Description: Component of DigitalDiagnost C90 and Radiography 7300 C System with wifi detector (Pixium 2430EZ - 9897 010 00843) and electrical box (4598-012-06871).

Test Location: IABG mbH, Germany

Test Date: February 2018

Report: TAF4-PB-18-082-V1

UUT PROPERTIES

Weight (lb)	Dimensions (inches)			Natural Frequency (Hz)		
	Width	Depth	Height	FB	SS	V
326	28.3"	60.6"	82.7"	> 33	29.0	> 33

SEISMIC TEST PARAMETERS

Building Code / Test Criteria	S _{DS} (g)	z / h	I _P	A _{FLX-H} (g)	A _{RIG-H} (g)	A _{FLX-V} (g)	A _{RIG-V} (g)
CBC 2022 / ICC-ES AC156	2.00	1.0	1.5	3.20	2.40		
	2.50	0.0	1.5			1.67	0.67

Note: The unit was full of contents during testing and remained functional before and after the ICC-ES AC156 test. The unit maintained structural integrity during and after the ICC-ES AC156 Test.

UUT_x-4

UNIT UNDER TEST (UUT) SUMMARY SHEET



Mounting Details: Wall mount with 4 - size 3 wood screws.



Manufacturer: ARUBA

Component: WIFI Access Point

Model / Serial Number: 4512 201 12191

UUT Function: WIFI Module

UUT Description: Component of DigitalDiagnost C90 and Radiography 7300 C System

Test Location: IABG mbH, Germany

Test Date: February 2018

Report: TAF4-PB-18-082-V1

UUT PROPERTIES

Weight (lb)	Dimensions (inches)			Natural Frequency (Hz)		
	Width	Depth	Height	FB	SS	V
1	5.9"	5.9"	2.8"	NA	NA	NA

SEISMIC TEST PARAMETERS

Building Code / Test Criteria	S _{DS} (g)	z / h	I _p	A _{FLX-H} (g)	A _{RIG-H} (g)	A _{FLX-V} (g)	A _{RIG-V} (g)
CBC 2022 / ICC-ES AC156	2.00	1.0	1.5	3.20	2.40		
	2.50	0.0	1.5			1.67	0.67

Note: The unit was full of contents during testing and remained functional before and after the ICC-ES AC156 test. The unit maintained structural integrity during and after the ICC-ES AC156 Test.

UUT_y-1

UNIT UNDER TEST (UUT) SUMMARY SHEET



Mounting Details: Rigid floor mounted with 4 - 1/2" grade 8 bolts torqued at 40ft-lb with 3.5" x 1.5" x 1/2" plate washers.



Manufacturer: Philips Medical Systems DMC GmbH

Component: Table TH2 - Wifi Detector **Model / Serial Number:** 9848-600-02222 / 16000193

UUT Function: Motorized patient table and dectector system used for X-Ray imaging.

UUT Description: DigitalDiagnost C90 and Radiography 7300 C patient table with installed dectector: Wifi Pixium 3543 EZ - 9897-010-02681.

Test Location: Environmental Testing Laboratory, Dallas, Texas

Test Date: January 2017

Report: SQ13-1703-01

UUT PROPERTIES

Weight (lb) with Patient	Dimensions (inches)			Natural Fequency (Hz)		
	Width	Depth	Height	FB	SS	V
1,172	33.5"	94.5"	20.8 - 36.4"	3.7	20.4	7.2

The patient table moves laterally both ways and vertically to accommodate different patients and procedures. The system was tested in the normal operating position with the table horizontally centered, a table top height of 30", and a total simulated patient weight of 560lbs.

SEISMIC TEST PARAMETERS

Building Code / Test Criteria	S _{DS} (g)	z / h	I _P	A _{FLX-H} (g)	A _{RIG-H} (g)	A _{FLX-V} (g)	A _{RIG-V} (g)
CBC 2022 / ICC-ES AC156	2.00	1.0	1.5	3.20	2.40		
	2.50	0.0	1.5			1.67	0.67

Note: The unit was full of contents during testing and remained fuctional before and after the ICC-ES AC156 test. The unit maintained structural integrity during and after the ICC-ES AC156 Test.

UUT_y-2

UNIT UNDER TEST (UUT) SUMMARY SHEET



Mounting Details: Rigid floor mounted with 4 - 1/2" grade 8 bolts torqued at 40ft-lb with 3.5" x 1.5" x 1/2" plate washers.



DATE: 02/19/2025

Manufacturer: Philips Medical Systems DMC GmbH

Component: Table TH2 - Fixed Detector **Model / Serial Number:** 9848-600-02222 / 16020429

UUT Function: Motorized patient table and dectector system used for X-Ray imaging.

UUT Description: DigitalDiagnost C90 and Radiography 7300 C patient table with fixed dectector: Pixium 4343RCE 4598-009-40141

Test Location: Environmental Testing Laboratory, Dallas, Texas

Test Date: January 2017

Report: SQ13-1703-01

UUT PROPERTIES

Weight (lb) with Patient	Dimensions (inches)			Natural Fequency (Hz)		
	Width	Depth	Height	FB	SS	V
1,175	33.5"	94.5"	20.8 - 36.4"	3.2	12	7.2

The patient table moves laterally both ways and vertically to accommodate different patients and procedures. The system was tested in the normal operating position with the table horizontally centered, a table top height of 30", and a total simulated patient weight of 560lbs.

SEISMIC TEST PARAMETERS

Building Code / Test Criteria	S _{DS} (g)	z / h	I _P	A _{FLX-H} (g)	A _{RIG-H} (g)	A _{FLX-V} (g)	A _{RIG-V} (g)
CBC 2022 / ICC-ES AC156	2.00	1.0	1.5	3.20	2.40		
	2.50	0.0	1.5			1.67	0.67

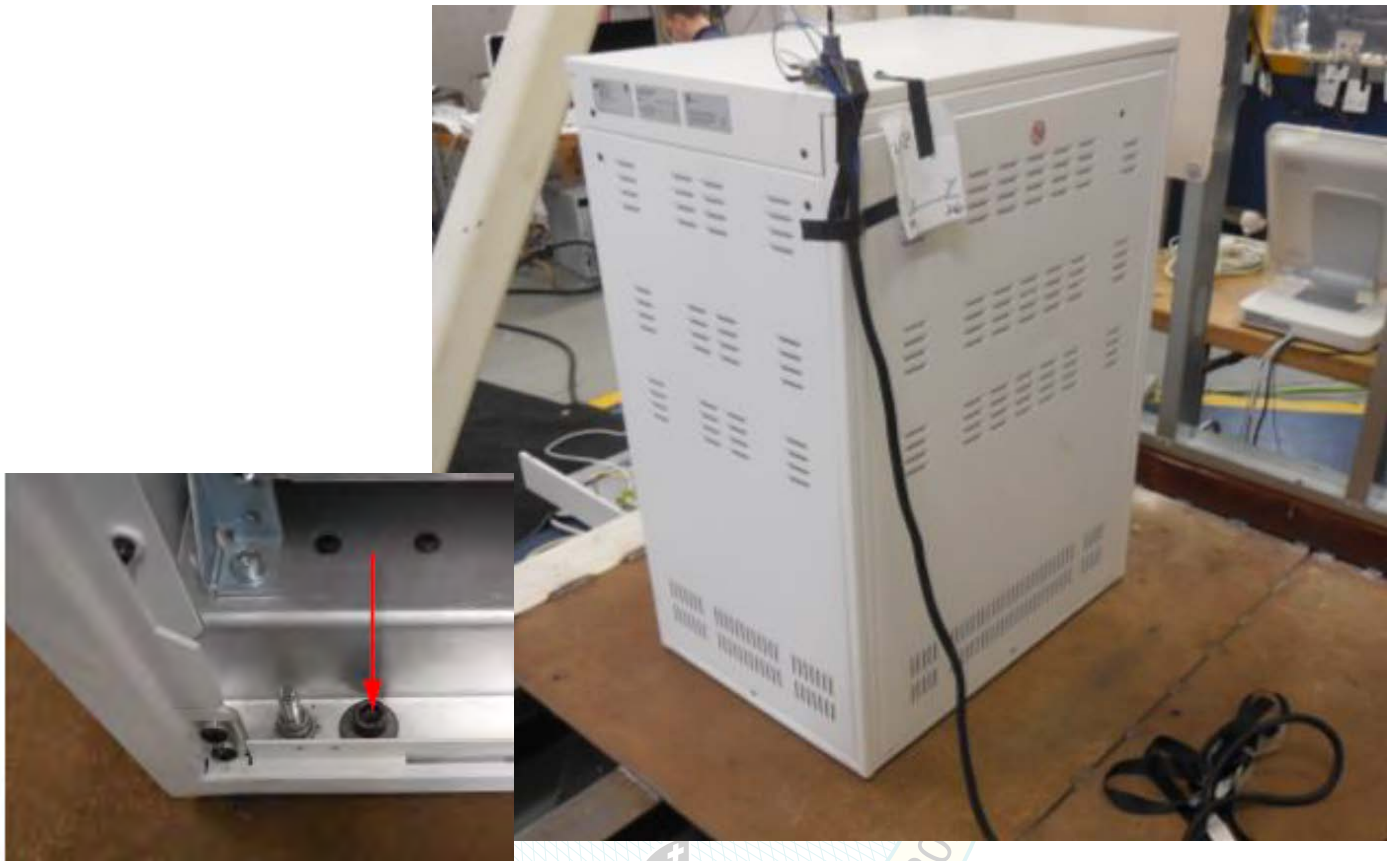
Note: The unit was full of contents during testing and remained fuctional before and after the ICC-ES AC156 test. The unit maintained structural integrity during and after the ICC-ES AC156 Test.

UUT_y-4

UNIT UNDER TEST (UUT) SUMMARY SHEET



Mounting Details: Rigid floor mounted with 4 - 3/8" A574 bolts with washers



Manufacturer: Philips Medical Systems DMC GmbH

Component: M-Cabinet CXA

Model / Serial Number: 9890-010-88393 / 16230001

UUT Function: X-Ray generator for Radiography System

UUT Description: Component of DigitalDiagnost C90 and Radiography 7300 C System

Test Location: Environmental Testing Laboratory, Dallas, Texas

Test Date: January 2017

Report: SQ13-1703-01

UUT PROPERTIES

Weight (lb)	Dimensions (inches)			Natural Frequency (Hz)		
	Width	Depth	Height	FB	SS	V
236	19.2"	27.6"	39"	10.8	9.0	23.2

SEISMIC TEST PARAMETERS

Building Code / Test Criteria	S _{DS} (g)	z / h	I _p	A _{FLX-H} (g)	A _{RIG-H} (g)	A _{FLX-V} (g)	A _{RIG-V} (g)
CBC 2022 / ICC-ES AC156	2.00	1.0	1.5	3.20	2.40		
	2.50	0.0	1.5			1.67	0.67

Note: The unit was full of contents during testing and remained functional before and after the ICC-ES AC156 test. The unit maintained structural integrity during and after the ICC-ES AC156 Test.

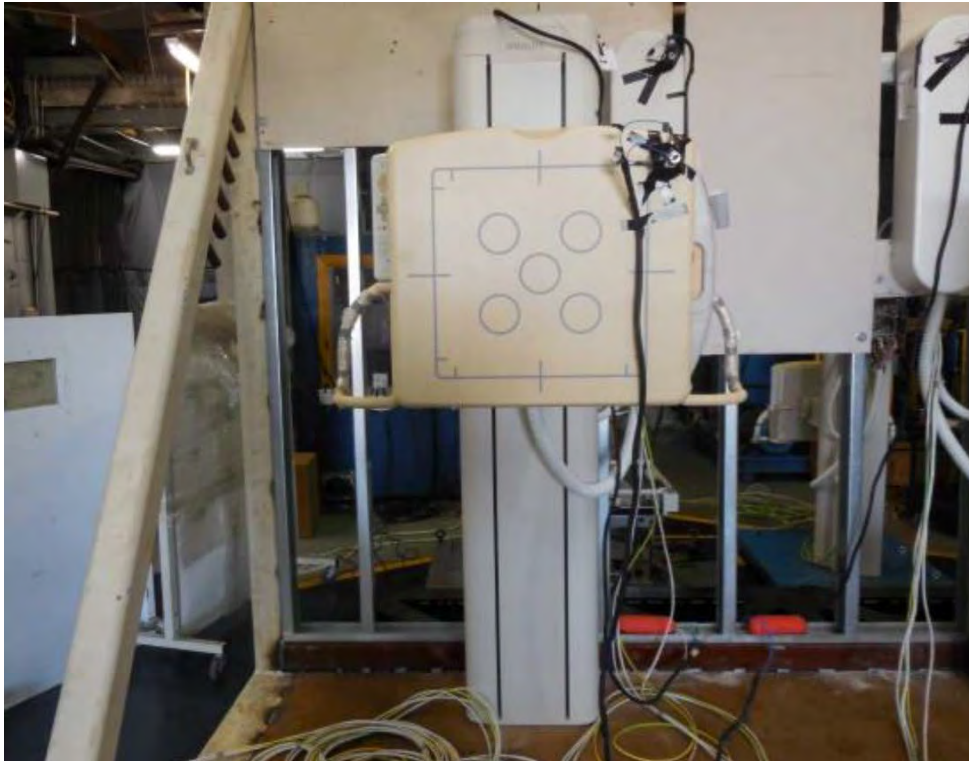
UUT_{z-8}

UNIT UNDER TEST (UUT) SUMMARY SHEET



Note: Modifications required for unit to pass seismic test. All modifications incorporated in Phillips seismic kit 4512-201-12241.

Mounting Details: Rigid floor / wall mounted with 3 - 1/2" grade 5 bolts torqued at 40ft-lbs to the floor and 4 - 3/8" grade 2 bolts torqued at 17ft-lbs to 16 ga. steel backing plate on the wall



Manufacturer: Philips Medical Systems DMC GmbH

Component: Vertical Stand 2 VS2 - Wifi Detector **Model / Serial Number:** 9897-010-01411 / 16000012

UUT Function: Vertical X-Ray imaging system.

UUT Description: Component of DigitalDiagnost C90 and Radiography 7300 C System with wifi detector (Pixium 3543EZ - 9897 010 02681) and electrical box (4598-012-06641).

Test Location: Environmental Testing Laboratory, Dallas, Texas

Test Date: January 2017

Report: SQ13-1701-01

UUT PROPERTIES

Weight (lb)	Dimensions (inches)			Natural Frequency (Hz)		
	Width	Depth	Height	FB	SS	V
562	23.5"	35.5"	81.9"	10.2	4.2	6.1

SEISMIC TEST PARAMETERS

Building Code / Test Criteria	S _{DS} (g)	z / h	I _p	A _{FLX-H} (g)	A _{RIG-H} (g)	A _{FLX-V} (g)	A _{RIG-V} (g)
CBC 2022 / ICC-ES AC156	2.00	1.0	1.5	3.20	2.40		
	2.50	0.0	1.5			1.67	0.67

Note: The unit was full of contents during testing and remained functional before and after the ICC-ES AC156 test. The unit maintained structural integrity during and after the ICC-ES AC156 Test.