



OFFICE OF STATEWIDE HEALTH PLANNING AND DEVELOPMENT
FACILITIES DEVELOPMENT DIVISION

APPLICATION FOR OSHPD SPECIAL SEISMIC CERTIFICATION PREAPPROVAL (OSP)

OFFICE USE ONLY

APPLICATION #: OSP-0657

OSHPD Special Seismic Certification Preapproval (OSP)

Type: [] New [X] Renewal

Manufacturer Information

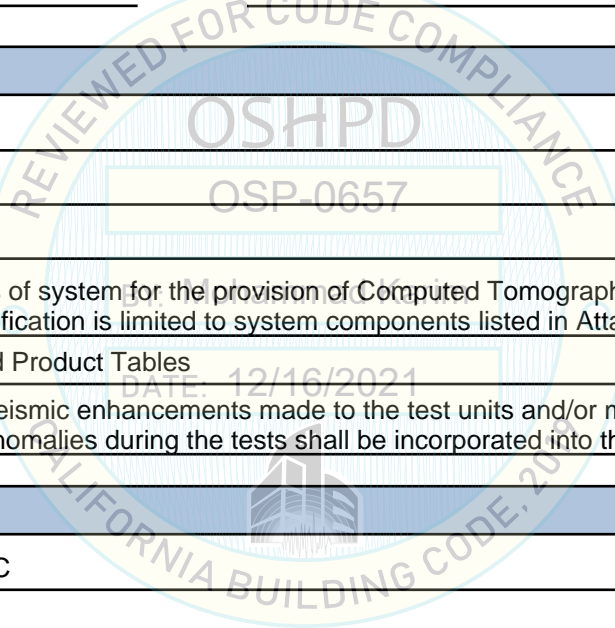
Manufacturer: Philips Healthcare
Manufacturer's Technical Representative: Charles Qi
Mailing Address: 258 Zhong Yuan Road, Suzhou Industrial Park, Jiangsu Province 215024, China
Telephone: Email: chao.qi@philips.com

Product Information

Product Name: CT Systems
Product Type: NA
Product Model Number: Incisive CT
General Description: Components of system for the provision of Computed Tomography medical diagnostic imaging. Seismic certification is limited to system components listed in Attachment 1 Table 1.
Mounting Description: See Certified Product Tables
Tested Seismic Enhancements: Seismic enhancements made to the test units and/or modifications required to address anomalies during the tests shall be incorporated into the production units.

Applicant Information

Applicant Company Name: EASE LLC
Contact Person: Jonathan Roberson
Mailing Address: 5877 Pine Ave Suite 210, Chino Hills, CA 91709
Telephone: (909) 622-7622 Email: j.roberson@easeco.com
Title: Principal Engineer





**OFFICE OF STATEWIDE HEALTH PLANNING AND DEVELOPMENT
FACILITIES DEVELOPMENT DIVISION**

California Licensed Structural Engineer Responsible for the Engineering and Test Report(s)

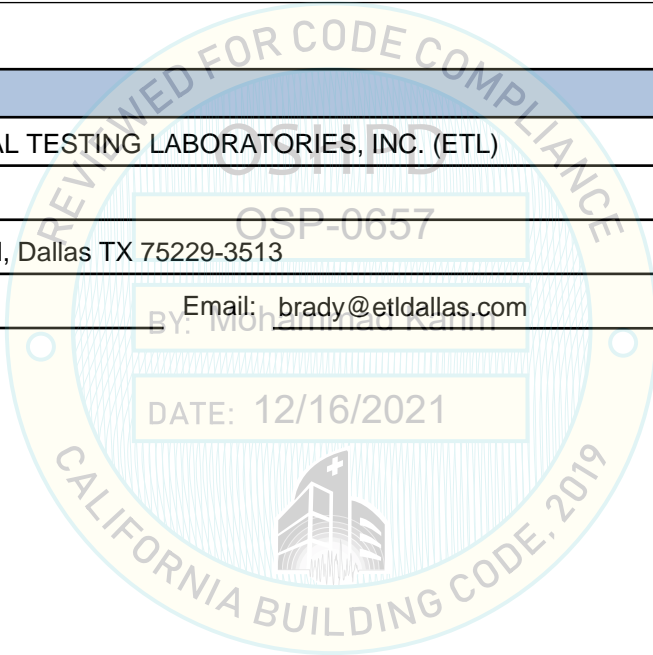
Company Name: EASE
Name: Jonathan Roberson California License Number: S4197
Mailing Address: 5877 Pine Ave., Suite 210, Chino Hills, CA 91709
Telephone: (951) 295-1892 Email: jon@EASECo.com

Certification Method

GR-63-Core ICC-ES AC156 IEEE 344 IEEE 693 NEBS 3
 Other (Please Specify): _____

Testing Laboratory

Company Name: ENVIRONMENTAL TESTING LABORATORIES, INC. (ETL)
Contact Person: Brady Richard
Mailing Address: 11034 Indian Trail, Dallas TX 75229-3513
Telephone: (972) 247-9657 Email: brady@etldallas.com





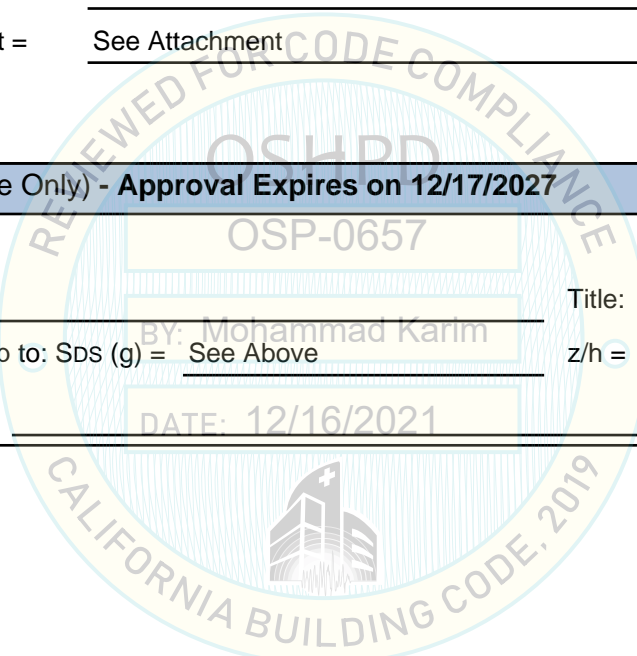
**OFFICE OF STATEWIDE HEALTH PLANNING AND DEVELOPMENT
FACILITIES DEVELOPMENT DIVISION**

Seismic Parameters

Design Basis of Equipment or Components (F_p/W_p) =	See Attachment 1, Table 1
SDS (Design spectral response acceleration at short period, g) =	2.0 ($z/h = 1$); 2.5 ($z/h = 0$)
a_p (Amplification factor) =	See Attachment 1, Table 1
R_p (Response modification factor) =	See Attachment 1, Table 1
Ω_0 (System overstrength factor) =	See Attachment
I_p (Importance factor) =	1.5
z/h (Height ratio factor) =	1 and 0
Natural frequencies (Hz) =	See Attachment
Overall dimensions and weight =	See Attachment

OSHPD Approval (For Office Use Only) - Approval Expires on 12/17/2027

Date:	12/16/2021		
Name:	Mohammad Karim	Title:	Supervisor, Health Facilities
Special Seismic Certification Valid Up to: SDS (g) =	See Above	$z/h =$	See Above
Condition of Approval (if applicable):			



ATTACHMENT 1: SEISMIC CERTIFIED COMPONENTS

TABLE 1:

Manufacturer		PHILIPS HEALTHCARE												
System		Incisive CT												
COMPONENT	MODEL NUMBER	APPROX. DIMENSIONS (IN.)			MAX. WT. (LB.)	MOUNT	BASIS ^[1]	F _P /W _P	S _{DS}	z/h	a _P	R _P	Ω ₀	
		W	D	H										
GANTRY														
Gantry	^[2] 459800860321	91.9	38.3	77.0	4737	Rigid Base	UUT-2002-1	2.40 1.13	2.0 2.5	1 0	1	1 ½	2	
Gantry (2cm DMS)	^[2] 459801882282	91.9	38.3	77.0	4573	Rigid Base	UUT-2101-1	2.40 1.13	2.0 2.5	1 0	1	1 ½	2	
PATIENT TABLES														
Patient Couch	^[3] 459800845141	27.6	102.1 – 178.0	23 – 40.5	769 ^[4]	Rigid Base	UUT-2001-2	2.40 1.13	2.0 2.5	1 0	1	1 ½	2	
Patient Couch (Bariatric)	^[5] 459801857121	20.3	102.5 – 216.5	19.3 – 41.5	1403 ^[6]	Rigid Base	UUT-2101-2	2.40 1.13	2.0 2.5	1 0	1	1 ½	2	
CONSOLES														
Console	^[7] 459801540241	8.5	21.7	17.5	53	Rigid Base	UUT-2001-4	1.44 1.13	2.0 2.5	1 0	1	2 ½	2	
Console (Standard)	^[7] 459801856851	8.5	21.7	17.5	53	Rigid Base	INT	1.44 1.13	2.0 2.5	1 0	1	2 ½	2	
Console (High Performance)	^[7] 459801856861	8.5	21.7	17.5	53	Rigid Base	UUT-2101-3	1.44 1.13	2.0 2.5	1 0	1	2 ½	2	
POWER DISTRIBUTION														
PDU	459801194311	23.3	30.3	32.5	800	Rigid Base	UUT-2001-6	1.44 1.13	2.0 2.5	1 0	1	2 ½	2	
UPS	^[8] 459800849611	3.3	16.5	16.9	37.5	Rigid Base	UUT-2001-3	1.44 1.13	2.0 2.5	1 0	1	2 ½	2	
USER INTERFACE														
CT Box	^[9] 459800940671	13.4	4.7	1.8	2.2	Countertop Anchored	UUT-2001-5	1.44 1.13	2.0 2.5	1 0	1	2 ½	2	
CT Box	^[9] 459800940675	13.4	4.7	1.8	2.2	Countertop Anchored	UUT-2002-2	1.44 1.13	2.0 2.5	1 0	1	2 ½	2	
CT Box	^[9] 459800940676	13.4	4.7	1.8	2.2	Countertop Anchored	UUT-2101-4	1.44 1.13	2.0 2.5	1 0	1	2 ½	2	

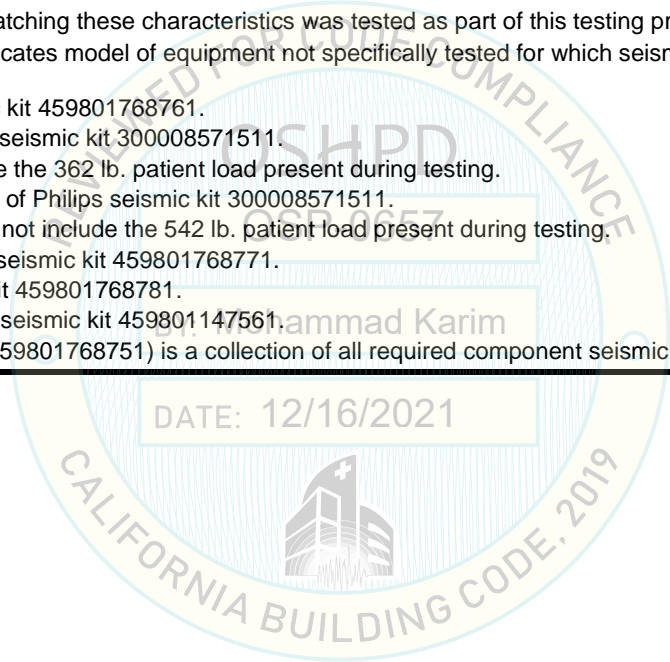
continued next page

ATTACHMENT 1: SEISMIC CERTIFIED COMPONENTS

ATTACHMENT PAGE | 2 OF 2

TABLE 1:

<i>Manufacturer</i>	PHILIPS HEALTHCARE
<i>System</i>	Incisive CT
<i>Mount</i>	<u>Rigid Base</u> : free-standing, base-mounted configuration with the component rigidly attached to a supporting structure and no lateral support above the base. <u>Countertop Anchored</u> : unit is anchored to a counter, desk, or other piece of rigid fixed furniture.
<i>Notes</i>	<p>1. <u>BASIS</u>:</p> <ul style="list-style-type: none"> • UUT - ### - #: Indicates that a unit matching these characteristics was tested as part of this testing program. • INT (Interpolated or Extrapolated) indicates model of equipment not specifically tested for which seismic qualification is established through testing of similar models in the product line. <p>2. Gantry requires use of Philips seismic kit 459801768761.</p> <p>3. Patient Couch requires use of Philips seismic kit 300008571511.</p> <p>4. Patient Couch weight does not include the 362 lb. patient load present during testing.</p> <p>5. Patient Couch (Bariatric) requires use of Philips seismic kit 300008571511.</p> <p>6. Patient Couch (Bariatric) weight does not include the 542 lb. patient load present during testing.</p> <p>7. Consoles each require use of Philips seismic kit 459801768771.</p> <p>8. UPS requires use of Philips seismic kit 459801768781.</p> <p>9. CT Boxes each require use of Philips seismic kit 459801147561.</p> <p>10. Incisive CT system seismic kit (P/N: 459801768751) is a collection of all required component seismic kits.</p>



UUT-2001-2 Patient Couch						
Manufacturer:		Philips Healthcare (Suzhou) Co., Ltd.				
Identification:		Part No. CT128PGA200 (as labeled) Part No. 459800845141 (as configured) Serial No. 19007				
Description:		Component of Incisive CT System <u>Patient Couch</u> Patient Load of 362 lbs is not included in the weight listed below. Requires the use of Philips Seismic Kit 300008571511 which contains mounting hardware.				
Mounting:		Rigid Base (Floor) mounted using (6) – 5/8" dia. SAE J429 Grade 5 bolts w/ 1/8" thk 0.75" x 1.25" Steel Washer, Nylon 6/6 NAS1515-H12H Washer, and 1/8" thk 0.75" x 1.25" Steel Washer. *Tested Depth 150.5 in and Height 37 in				
Dimensions [in]				Lowest Resonant Frequency [Hz]		
Width	Depth	Height	Weight [lb]	Front - Axis	Side - Axis	Vert - Axis
27.6	102.1 – 178.0*	23 – 40.5*	769	30.53	3.51	6.53
ICC-ES AC156 Shake Table Test Parameters						Code: 2019 CBC
S _{DS} [G]	z/h	I _p	A _{FLX-H} [G]	A _{RIg-H} [G]	A _{FLX-V} [G]	A _{RIg-V} [G]
2.0 2.5	1 0	1.5	3.20	2.40	1.68	0.68
Unit satisfied AC156 requirements for structural integrity and manufacturer requirements for functionality after AC156 test.						



UUT-2001-3 UPS						
Manufacturer:		Emerson Network Power Co., Ltd				
Identification:		Part No.: GXT4-1000RT230 (as labeled) Part No. 459800849611 (as configured) Serial No.: 1716000490AFBF3				
Description:		Component of Incisive CT System <u>Uninterrupted Power Supply (UPS)</u> Weight includes external mounting bracket hardware Requires the use of Philips Seismic Kit 459801768781 which contains mounting hardware.				
Mounting:		Rigid Base (Floor) mounted using (4) – M8 Class 8.8 bolts w/ Philips supplied brackets				
Dimensions [in]				Lowest Resonant Frequency [Hz]		
Width	Depth	Height	Weight [lb]	Front - Axis	Side - Axis	Vert - Axis
3.3	16.5	16.9	37.5	>50	19.24	>50
ICC-ES AC156 SHAKE TABLE TEST PARAMETERS						CODE: 2019 CBC
S _{DS} [G]	z/h	I _p	A _{FLX-H} [G]	A _{RIg-H} [G]	A _{FLX-V} [G]	A _{RIg-V} [G]
2.0 2.5	1 0	1.5	3.20	2.40	1.68	0.68
Unit satisfied AC156 requirements for structural integrity and manufacturer requirements for functionality after AC156 test.						



UUT-2001-4 Console							
<i>Manufacturer:</i>		Hewlett Packard (HP) & Philips Healthcare (Suzhou) Co., Ltd.					
<i>Identification:</i>		Part No.: 459801540241 Serial No.: 4CV843W2BY					
<i>Description:</i>		Component of Incisive CT System <u>Console</u> Weight excludes external mounting bracket hardware Requires the use of Philips Seismic Kit 459801768771 which contains mounting hardware.					
<i>Mounting:</i>		<u>Rigid Base (Floor) mounted</u> using (4) – M8 Class 8.8 bolts w/ Philips supplied brackets					
Dimensions [in]				Lowest Resonant Frequency [Hz]			
Width	Depth	Height	Weight [lb]	Front - Axis	Side - Axis	Vert - Axis	
8.5	21.7	17.5	53	40.71	20.32	15.54	
ICC-ES AC156 Shake Table Test Parameters							Code: 2019 CBC
S _{DS} [G]	z/h	I _p	A _{FLX-H} [G]	A _{RIG-H} [G]	A _{FLX-V} [G]	A _{RIG-V} [G]	
2.0 2.5	1 0	1.5	3.20	2.40	1.68	0.68	
Unit satisfied AC156 requirements for structural integrity and manufacturer requirements for functionality after AC156 test.							



UUT-2001-5 CT Box							
<i>Manufacturer:</i>		Grayhill Electronics (Shenzhen) Co., Ltd					
<i>Identification:</i>		Part No.: 459800940671 Serial No.: None					
<i>Description:</i>		Component of Incisive CT System <u>CT Control Box</u> Weight excludes dual lock mounting strips Requires the use of Philips Seismic Kit 459801147561 which contains mounting hardware.					
<i>Mounting:</i>		<u>Countertop Anchored mounted</u> using (2) – 1 in x 4 in strips of 3M Dual Lock					
Dimensions [in]				Lowest Resonant Frequency [Hz]			
Width	Depth	Height	Weight [lb]	Side - Axis	Front - Axis	Vert - Axis	
13.4	4.7	1.8	2.2	>50	>50	15.51	
ICC-ES AC156 Shake Table Test Parameters							Code: 2019 CBC
S _{DS} [G]	z/h	I _p	A _{FLX-H} [G]	A _{RIG-H} [G]	A _{FLX-V} [G]	A _{RIG-V} [G]	
2.0 2.5	1 0	1.5	3.20	2.40	1.68	0.68	
Unit satisfied AC156 requirements for structural integrity and manufacturer requirements for functionality after AC156 test.							



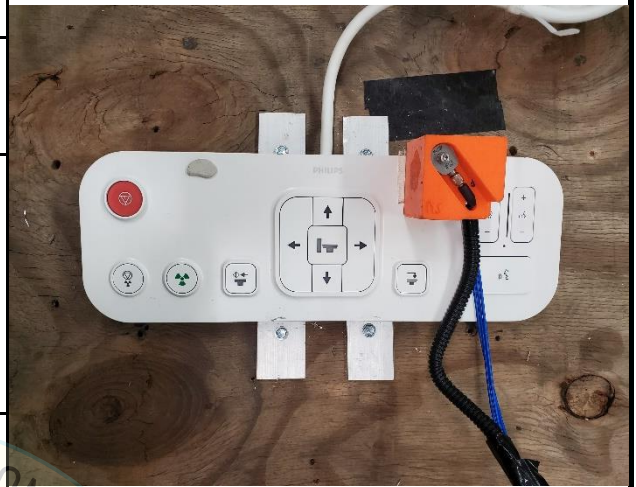
UUT-2001-6 PDU							
<i>Manufacturer:</i>		CETC ECRIEPOWER (ANHUI) CO., LTD					
<i>Identification:</i>		Part No.: CT-PDU-115kVA (as labeled) Part No.: 459801194311 (as configured) Serial No.: 00432					
<i>Description:</i>		Component of Incisive CT System <u>Isolation transformer, power distribution unit (PDU)</u> Weight includes external mounting bracket hardware					
<i>Mounting:</i>		<u>Rigid Base (Floor) mounted</u> using (6) – 3/8" dia. SAE J429 Grade 5 bolts w/ washer and Philips standard production external brackets					
Dimensions [in]				Lowest Resonant Frequency [Hz]			
Width	Depth	Height	Weight [lb]	Front - Axis	Side - Axis	Vert-Axis	
23.3	30.3	32.5	800	26.57	20.73	>50	
ICC-ES AC156 Shake Table Test Parameters							Code: 2019 CBC
S _{DS} [G]	z/h	I _p	A _{FLX-H} [G]	A _{RIG-H} [G]	A _{FLX-V} [G]	A _{RIG-V} [G]	
2.0 2.5	1 0	1.5	3.20	2.40	1.68	0.68	
Unit satisfied AC156 requirements for structural integrity and manufacturer requirements for functionality after AC156 test.							



UUT-2002-1 Gantry							
<i>Manufacturer:</i>		Philips Healthcare (Suzhou) Co., Ltd.					
<i>Identification:</i>		Part No.: CT128PGA100 (as labeled) 459800860321 (as configured) Serial No.: 19101					
<i>Description:</i>		Component of Incisive CT System Requires the use of Philips Seismic Kit 459801768761 which contains mounting electrical isolation hardware					
<i>Mounting:</i>		<u>Rigid Base (Floor) mounted</u> using (8) – 5/8" dia. SAE J429 Grade 5 bolts w/ 1/8" thk 0.75" x 1.25" Steel Washer, Nylon 6/6 NAS1515-H12H Washer, and 1/8" thk 0.75" x 1.25" Steel Washer.					
Dimensions [in]				Lowest Resonant Frequency [Hz]			
Width	Depth	Height	Weight [lb]	Side - Axis	Front - Axis	Vert - Axis	
91.9	38.3	77.0	4737	5.41	7.06	21.47	
ICC-ES AC156 Shake Table Test Parameters							Code: 2019 CBC
S _{DS} [G]	z/h	I _p	A _{FLX-H} [G]	A _{RIG-H} [G]	A _{FLX-V} [G]	A _{RIG-V} [G]	
2.0 2.5	1 0	1.5	3.20	2.40	1.68	0.68	
Unit satisfied AC156 requirements for structural integrity and manufacturer requirements for functionality after AC156 test.							





UUT-2002-2 CT Box							
<i>Manufacturer:</i>		Grayhill Electronics (Shenzhen) Co., Ltd					
<i>Identification:</i>		Part No.: 459800940675 Serial No.: None					
<i>Description:</i>		Component of Incisive CT System <u>CT Control Box</u> Weight excludes mounting bracket Requires the use of Philips Seismic Kit 459801147561 which contains mounting hardware.					
<i>Mounting:</i>		<u>Countertop Anchored mounted</u> using (2) – 1 in x 6 in strips of 6061-T6 Aluminum with (4) #10 Tek screws					
Dimensions [in]				Lowest Resonant Frequency [Hz]			
Width	Depth	Height	Weight [lb]	Side - Axis	Front - Axis	Vert - Axis	
13.4	4.7	1.8	2.2	36.70	36.63	38.09	
ICC-ES AC156 Shake Table Test Parameters							Code: 2019 CBC
S _{DS} [G]	z/h	I _p	A _{FLX-H} [G]	A _{RIG-H} [G]	A _{FLX-V} [G]	A _{RIG-V} [G]	
2.0	1	1.5	3.20	2.40	1.68	0.68	
2.5	0						
Unit satisfied AC156 requirements for structural integrity and manufacturer requirements for functionality after AC156 test.							



UUT-2101-1 Gantry (2cm DMS)							
<i>Manufacturer:</i>		Philips Healthcare (Suzhou) Co., Ltd.					
<i>Identification:</i>		Part No.: 459801882282 (as configured) Model No.: CT128PGA100 (as labeled) Serial No.: 19101					
<i>Description:</i>		Component of Incisive CT System <u>CT Gantry</u> - Contains new 2cm DMS compared to previously approved Gantry (UUT-2002-1). Gantry is configured as part number 459801882282. - Includes added screw to retain mylar collar which will be included in certified unit. - Requires the use of Philips seismic kit 459801768761 which contains specified washers.					
<i>Mounting:</i>		<u>Rigid Base (Floor) mounted</u> using (8) – 5/8" dia. SAE J429 Grade 5 bolts w/ 1/8" thk 0.75" x 1.25" Steel Washer, Nylon 6/6 NAS1515-H12H Washer, and 1/8" thk 0.75" x 1.25" Steel Washer.					
Dimensions [in]				Lowest Resonant Frequency [Hz]			
Width	Depth	Height	Weight [lb]	Side - Axis	Front - Axis	Vert - Axis	
91.9	38.3	77.0	4573	7.22	6.95	16.29	
ICC-ES AC156 Shake Table Test Parameters							Code: 2019 CBC
S _{DS} [G]	z/h	I _p	A _{FLX-H} [G]	A _{RIG-H} [G]	A _{FLX-V} [G]	A _{RIG-V} [G]	
2.0	1	1.5	3.20	2.40	1.68	0.68	
2.5	0						
Unit satisfied AC156 requirements for structural integrity and manufacturer requirements for functionality after AC156 test.							



UUT-2101-2 Patient Couch (Bariatric)							
Manufacturer: Philips Healthcare (Suzhou) Co., Ltd.							
Identification: Part No.: 459801857121 Serial No.: SC001							
Description: Component of Incisive CT System <u>Patient Couch (Bariatric)</u> - Model: Noah WP_M - Patient Load of 542 lbs is not included in the weight listed below. Requires the use of Philips seismic kit 300008571511 which contains specified washers. *Tested Depth = 150.5" and Height = 37"							
Mounting: Rigid Base (Floor) mounted using (6) – 5/8" dia. SAE J429 Grade 5 bolts w/ 1/8" thk 0.75" x 1.75" Steel Washer, Nylon 6/6 NAS1515-H12H Washer, and 1/8" thk 0.75" x 1.75" Steel Washer.							
Dimensions [in]				Lowest Resonant Frequency [Hz]			
Width	Depth	Height	Weight [lb]	Front - Axis	Side - Axis	Vert - Axis	
20.3	102.5 – 216.5*	19.3 – 41.5*	1403	2.60	10.23	5.53	
ICC-ES AC156 Shake Table Test Parameters							Code: 2019 CBC
S _{DS} [G]	z/h	I _p	A _{FLX-H} [G]	A _{RIg-H} [G]	A _{FLX-V} [G]	A _{RIg-V} [G]	
2.0	1	1.5	3.20	2.40	1.68	0.68	
2.5	0						
Unit satisfied AC156 requirements for structural integrity and manufacturer requirements for functionality after AC156 test.							

UUT-2101-3 Console (High Performance)							
Manufacturer: Hewlett Packard (HP) & Philips Healthcare (Suzhou) Co., Ltd.							
Identification: Part No.: 459801856861 Serial No.: 4CE11622F5							
Description: Component of Incisive CT System <u>Console (High Performance)</u> Weight excludes external mounting bracket hardware Requires the use of Philips Seismic Kit 459801768771 which contains mounting hardware.							
Mounting: Rigid Base (Floor) mounted using 3/8" dia. SAE J429 Grade 5 bolts w/ Philips supplied brackets							
Dimensions [in]				Lowest Resonant Frequency [Hz]			
Width	Depth	Height	Weight [lb]	Front - Axis	Side - Axis	Vert - Axis	
8.5	21.7	17.5	53	23.77	44.64	10.33	
ICC-ES AC156 Shake Table Test Parameters							Code: 2019 CBC
S _{DS} [G]	z/h	I _p	A _{FLX-H} [G]	A _{RIg-H} [G]	A _{FLX-V} [G]	A _{RIg-V} [G]	
2.0	1	1.5	3.20	2.40	1.68	0.68	
2.5	0						
Unit satisfied AC156 requirements for structural integrity and manufacturer requirements for functionality after AC156 test.							

UUT-2101-4 CT Box						
<i>Manufacturer:</i>		Grayhill Electronics (Shenzhen) Co., Ltd for Philips Healthcare (Suzhou) Co., Ltd				
<i>Identification:</i>		Part No.: 459800940676 Serial No.: 000006				
<i>Description:</i>		Component of Incisive CT System <u>CT Control Box</u> Weight excludes Dual Lock mounting strips Requires the use of Philips Seismic Kit 459801147561 which contains mounting strips				
<i>Mounting:</i>		<u>Countertop Anchored mounted</u> using (2) – 1 in x 3 in 3M Dual Lock Strips P/N: SJ3560				
Dimensions [in]				Lowest Resonant Frequency [Hz]		
Width	Depth	Height	Weight [lb]	Side - Axis	Front - Axis	Vert - Axis
13.4	4.7	1.8	2.2	>50	44.20	14.86
ICC-ES AC156 Shake Table Test Parameters						Code: 2019 CBC
S _{Ds} [G]	z/h	I _p	A _{FLEX-H} [G]	A _{RIG-H} [G]	A _{FLEX-V} [G]	A _{RIG-V} [G]
2.0 2.5	1 0	1.5	3.20	2.40	1.68	0.68
Unit satisfied AC156 requirements for structural integrity and manufacturer requirements for functionality after AC156 test.						

