



**OFFICE OF STATEWIDE HEALTH PLANNING AND DEVELOPMENT  
FACILITIES DEVELOPMENT DIVISION**

**APPLICATION FOR OSHPD SPECIAL SEISMIC  
CERTIFICATION PREAPPROVAL (OSP)**

OFFICE USE ONLY

**APPLICATION #: OSP-0659**

**OSHPD Special Seismic Certification Preapproval (OSP)**

Type:  New  Renewal

**Manufacturer Information**

Manufacturer: Online Power Inc.

Manufacturer's Technical Representative: Sherri Shahsavari

Mailing Address: 14000 South Broadway St., Los Angeles, CA 90061

Telephone: (323) 720-4125

Email: sherris@onlinepower.com

**Product Information**

Product Name: UPS and Batteries

Product Type: UPS

Product Model Number: Power Wave 4

General Description: Uninterruptible Power Supply (UPS) and Maintenance Bypass Cabinet (MBC)

Mounting Description: Rigid, Floor Mounted

Tested Seismic Enhancements: None

DATE: 03/26/2021

**Applicant Information**

Applicant Company Name: TRU Compliance by, Structural Integrity Associates, Inc.

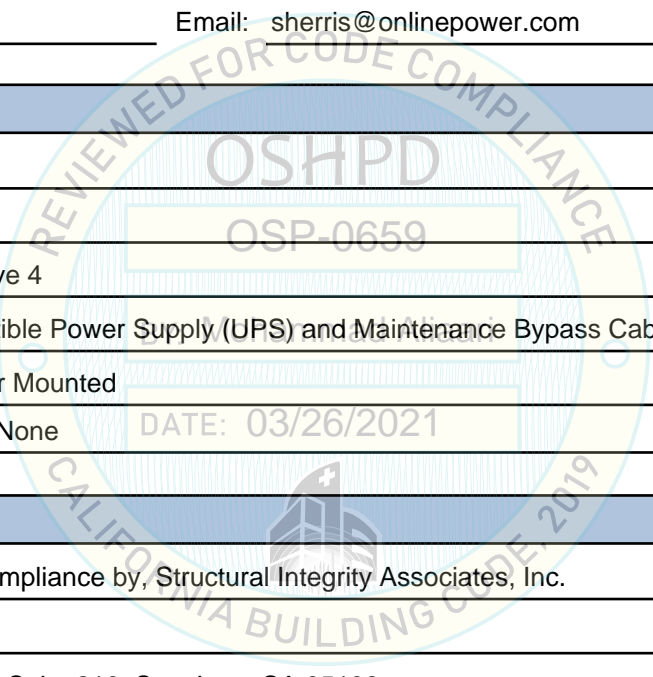
Contact Person: Galen Reid

Mailing Address: 5215 Hellyer Ave., Suite 210, San Jose, CA 95138

Telephone: (541) 604-7225

Email: greid@structint.com

Title: Manager





**OFFICE OF STATEWIDE HEALTH PLANNING AND DEVELOPMENT  
FACILITIES DEVELOPMENT DIVISION**

**California Licensed Structural Engineer Responsible for the Engineering and Test Report(s)**

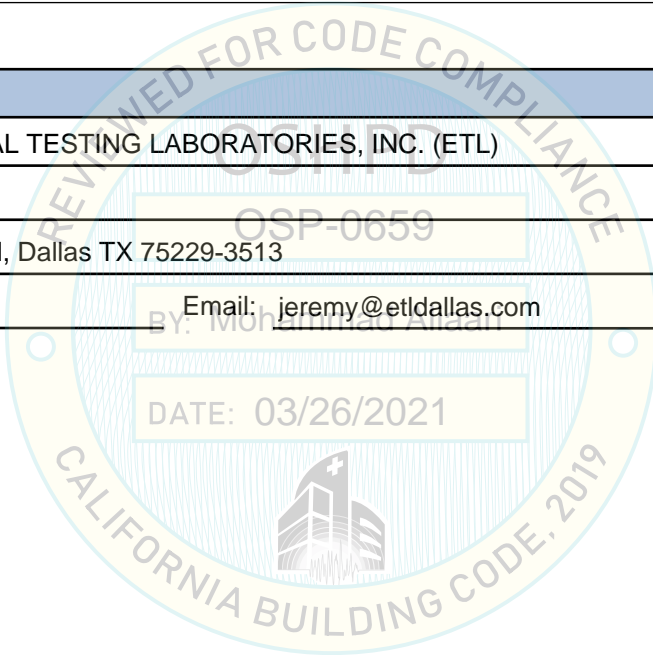
Company Name: STRUCTURAL INTEGRITY ASSOCIATES, INC.  
Name: Andrew Coughlin California License Number: S6082  
Mailing Address: 5215 Hellyer Ave, Suite 101, San Jose, CA 95138-1025  
Telephone: (415) 635-8461 Email: acoughlin@structint.com

**Certification Method**

GR-63-Core       ICC-ES AC156       IEEE 344       IEEE 693       NEBS 3  
 Other (Please Specify): \_\_\_\_\_

**Testing Laboratory**

Company Name: ENVIRONMENTAL TESTING LABORATORIES, INC. (ETL)  
Contact Person: Jeremy Lange  
Mailing Address: 11034 Indian Trail, Dallas TX 75229-3513  
Telephone: (972) 247-9657 Email: jeremy@etldallas.com





**OFFICE OF STATEWIDE HEALTH PLANNING AND DEVELOPMENT  
FACILITIES DEVELOPMENT DIVISION**

**Seismic Parameters**

Design Basis of Equipment or Components ( $F_p/W_p$ ) = 0.72

SDS (Design spectral response acceleration at short period, g) = 1.60

$a_p$  (Amplification factor) = 1.0

$R_p$  (Response modification factor) = 2.5

$\Omega_0$  (System overstrength factor) = 2.0

$I_p$  (Importance factor) = 1.5

$z/h$  (Height ratio factor) = 0

Natural frequencies (Hz) = See Attachment

Overall dimensions and weight = See Attachment

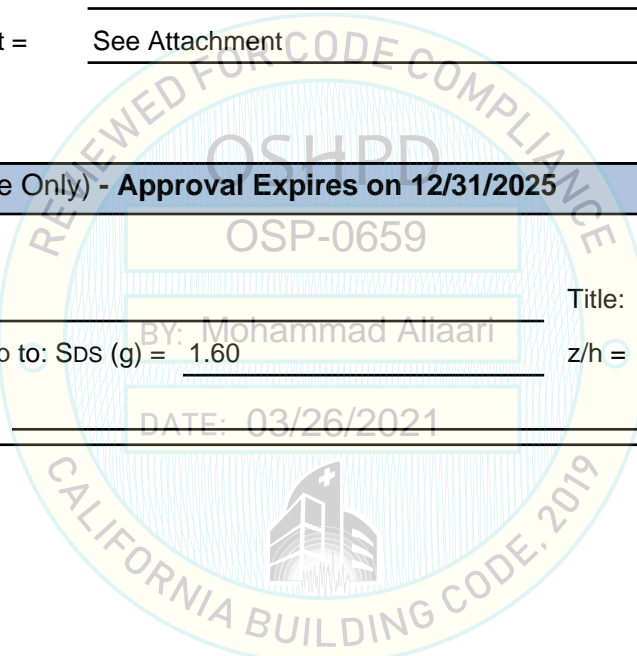
**OSHPD Approval (For Office Use Only) - Approval Expires on 12/31/2025**

Date: 3/26/2021

Name: Mohammad Aliaari Title: Senior Structural Engineer

Special Seismic Certification Valid Up to: SDS (g) = 1.60 z/h = 0

Condition of Approval (if applicable): DATE: 03/26/2021



# SPECIAL SEISMIC CERTIFICATION CERTIFIED COMPONENT MATRIX

2000232-CR-001-R1



<b>Manufacturer:</b> Online Power Inc.	<b>TABLE 1</b>
<b>Model Line:</b> Power Wave 4	

**Certified Product Construction Summary:**  
**Base & Top:** 12 GA. carbon steel, **Back & Sides:** 14 GA. carbon steel, **Doors:** 16 GA. carbon steel.

**Certified Options Summary:**  
 Input/Output voltage: 480Y/277 OR 208Y/120

**Mounting Configuration:**  
 Base mounted - rigid  
 Note: Installed mounting configuration must be of similar configuration and equivalent strength and stiffness to those tested.

**Building Code:** CBC 2019      **Seismic Certification Limits:**  $S_{DS} = 1.6g$     $z/h = 0.0$        $I_p = 1.5$

Model Line	Model	Dimensions (in)			Weight (lb)	Notes	UUT
		Depth	Width	Height			
Power Wave 4 (Cabinet Type A)	SV-PW010B05ATT3-BT	31.5	40.7	63	925		Extrap.
	SV-PW020B05ATT3-BT	31.5	40.7	63	1168		Extrap.
	SV-PW030B05ATT3-BT	31.5	40.7	63	1345		Extrap.
	SV-PW040B05ATT3-BT	31.5	40.7	63	1499		Extrap.
	SV-PW050B05ATT3-BT	31.5	40.7	63	1610		Extrap.
	SV-PW010H05ATT3-BT	31.5	40.7	63	925		Extrap.
	SV-PW020H05ATT3-BT	31.5	40.7	63	1168		Extrap.
	SV-PW030H05ATT3-BT	31.5	40.7	63	1345		Extrap.
	SV-PW040H05ATT3-BT	31.5	40.7	63	1499		Extrap.
	SV-PW050H05ATT3-BT	31.5	40.7	63	1610		Extrap.
	SV-PW010B09ATT3-BT	31.5	40.7	63	925		Extrap.
	SV-PW020B09ATT3-BT	31.5	40.7	63	1168		Extrap.
	SV-PW030B09ATT3-BT	31.5	40.7	63	1345		Extrap.
	SV-PW040B09ATT3-BT	31.5	40.7	63	1499		Extrap.
	SV-PW050B09ATT3-BT	31.5	40.7	63	1610		Extrap.
	SV-PW010H09ATT3-BT	31.5	40.7	63	925		Extrap.
	SV-PW020H09ATT3-BT	31.5	40.7	63	1168		Extrap.
	SV-PW030H09ATT3-BT	31.5	40.7	63	1345		Extrap.
	SV-PW040H09ATT3-BT	31.5	40.7	63	1499		Extrap.
	SV-PW050H09ATT3-BT	31.5	40.7	63	1610		Extrap.
	SV-PW010B05ATT3	31.5	40.7	63	925		Extrap.
	SV-PW020B05ATT3	31.5	40.7	63	1168		Extrap.
	SV-PW030B05ATT3	31.5	40.7	63	1345		Extrap.
	SV-PW040B05ATT3	31.5	40.7	63	1499		Extrap.

# SPECIAL SEISMIC CERTIFICATION CERTIFIED COMPONENT MATRIX

2000232-CR-001-R1



<b>Manufacturer:</b> Online Power Inc.	<b>TABLE 1</b>
<b>Model Line:</b> Power Wave 4	

**Certified Product Construction Summary:**  
**Base & Top:** 12 GA. carbon steel, **Back & Sides:** 14 GA. carbon steel, **Doors:** 16 GA. carbon steel.

**Certified Options Summary:**  
 Input/Output voltage: 480Y/277 OR 208Y/120

**Mounting Configuration:**  
 Base mounted - rigid  
 Note: Installed mounting configuration must be of similar configuration and equivalent strength and stiffness to those tested.

**Building Code:** CBC 2019      **Seismic Certification Limits:**  $S_{DS} = 1.6g$     $z/h = 0.0$        $I_p = 1.5$

Model Line	Model	Dimensions (in)			Weight (lb)	Notes	UUT
		Depth	Width	Height			
Power Wave 4 (Cabinet Type A)	SV-PW050B05ATT3	31.5	40.7	63	1610		Extrap.
	SV-PW060B05ATT3	31.5	40.7	63	1737		Extrap.
	SV-PW010H05ATT3	31.5	40.7	63	925		Extrap.
	SV-PW020H05ATT3	31.5	40.7	63	1168		Extrap.
	SV-PW030H05ATT3	31.5	40.7	63	1345		Extrap.
	SV-PW040BH05ATT3	31.5	40.7	63	1499		Extrap.
	SV-PW050H05ATT3	31.5	40.7	63	1610		Extrap.
	SV-PW060H05ATT3	31.5	40.7	63	1737		Extrap.
	SV-PW010B09ATT3	31.5	40.7	63	925		Extrap.
	SV-PW020B09ATT3	31.5	40.7	63	1168		Extrap.
	SV-PW030B09ATT3	31.5	40.7	63	1345		Extrap.
	SV-PW040B09ATT3	31.5	40.7	63	1499		Extrap.
	SV-PW050B09ATT3	31.5	40.7	63	1610		Extrap.
	SV-PW060B09ATT3	31.5	40.7	63	1737		Extrap.
	SV-PW010H09ATT3	31.5	40.7	63	925		Extrap.
	SV-PW020H09ATT3	31.5	40.7	63	1168		Extrap.
	SV-PW030H09ATT3	31.5	40.7	63	1345		Extrap.
	SV-PW040BH09ATT3	31.5	40.7	63	1499		Extrap.
	SV-PW050H09ATT3	31.5	40.7	63	1610		Extrap.
	SV-PW060H09ATT3	31.5	40.7	63	1751		1
	SV-HP010B05ATT3	31.5	40.7	63	925		Interp.
	SV-HP020B05ATT3	31.5	40.7	63	1168		Interp.
	SV-HP030B05ATT3	31.5	40.7	63	1345		Interp.
	SV-HP040B05ATT3	31.5	40.7	63	1499		Interp.

# SPECIAL SEISMIC CERTIFICATION CERTIFIED COMPONENT MATRIX

2000232-CR-001-R1



<b>Manufacturer:</b> Online Power Inc.	<b>TABLE 1</b>
<b>Model Line:</b> Power Wave 4	

**Certified Product Construction Summary:**  
**Base & Top:** 12 GA. carbon steel, **Back & Sides:** 14 GA. carbon steel, **Doors:** 16 GA. carbon steel.

**Certified Options Summary:**  
 Input/Output voltage: 480Y/277 OR 208Y/120

**Mounting Configuration:**  
 Base mounted - rigid  
 Note: Installed mounting configuration must be of similar configuration and equivalent strength and stiffness to those tested.

**Building Code:** CBC 2019      **Seismic Certification Limits:**  $S_{DS} = 1.6g$     $z/h = 0.0$        $I_p = 1.5$

Model Line	Model	Dimensions (in)			Weight (lb)	Notes	UUT
		Depth	Width	Height			
Power Wave 4 (Cabinet Type A)	SV-HP050B05ATT3	31.5	40.7	63	1610		Interp.
	SV-HP060B05ATT3	31.5	40.7	63	1737		Interp.
	SV-HP010H05ATT3	31.5	40.7	63	925		Interp.
	SV-HP020H05ATT3	31.5	40.7	63	1168		Interp.
	SV-HP030H05ATT3	31.5	40.7	63	1345		Interp.
	SV-HP040H05ATT3	31.5	40.7	63	1499		Interp.
	SV-HP050H05ATT3	31.5	40.7	63	1610		Interp.
	SV-HP060H05ATT3	31.5	40.7	63	1737		Interp.
	SV-HP010B09ATT3	31.5	40.7	63	925		Interp.
	SV-HP020B09ATT3	31.5	40.7	63	1168		Interp.
	SV-HP030B09ATT3	31.5	40.7	63	1345		Interp.
	SV-HP040B09ATT3	31.5	40.7	63	1499		Interp.
	SV-HP050B09ATT3	31.5	40.7	63	1610		Interp.
	SV-HP060B09ATT3	31.5	40.7	63	1737		Interp.
	SV-HP010H09ATT3	31.5	40.7	63	925		Interp.
	SV-HP020H09ATT3	31.5	40.7	63	1168		Interp.
	SV-HP030H09ATT3	31.5	40.7	63	1345		Interp.
	SV-HP040H09ATT3	31.5	40.7	63	1499		Interp.
	SV-HP050H09ATT3	31.5	40.7	63	1610		Interp.
	SV-HP060H09ATT3	31.5	40.7	63	1737		Interp.
	SV-HP010B05ATT3-BT	31.5	40.7	63	925		Interp.
	SV-HP020B05ATT3-BT	31.5	40.7	63	1168		Interp.
	SV-HP030B05ATT3-BT	31.5	40.7	63	1345		Interp.
	SV-HP040B05ATT3-BT	31.5	40.7	63	1499		Interp.



# SPECIAL SEISMIC CERTIFICATION CERTIFIED COMPONENT MATRIX

2000232-CR-001-R1



<b>Manufacturer:</b> Online Power Inc.	<b>TABLE 1</b>
<b>Model Line:</b> Power Wave 4	

**Certified Product Construction Summary:**  
**Base & Top:** 12 GA. carbon steel, **Back & Sides:** 14 GA. carbon steel, **Doors:** 16 GA. carbon steel.

**Certified Options Summary:**  
 Input/Output voltage: 480Y/277 OR 208Y/120

**Mounting Configuration:**  
 Base mounted - rigid  
 Note: Installed mounting configuration must be of similar configuration and equivalent strength and stiffness to those tested.

**Building Code:** CBC 2019      **Seismic Certification Limits:**  $S_{DS} = 1.6g$     $z/h = 0.0$        $I_P = 1.5$

Model Line	Model	Dimensions (in)			Weight (lb)	Notes	UUT
		Depth	Width	Height			
Power Wave 4 (Cabinet Type A)	SV-HP050B05ATT3-BT	31.5	40.7	63	1610		Interp.
	SV-HP010H05ATT3-BT	31.5	40.7	63	925		Interp.
	SV-HP020H05ATT3-BT	31.5	40.7	63	1168		Interp.
	SV-HP030H05ATT3-BT	31.5	40.7	63	1345		Interp.
	SV-HP040H05ATT3-BT	31.5	40.7	63	1499		Interp.
	SV-HP050H05ATT3-BT	31.5	40.7	63	1610		Interp.
	SV-HP010B09ATT3-BT	31.5	40.7	63	925		Interp.
	SV-HP020B09ATT3-BT	31.5	40.7	63	1168		Interp.
	SV-HP030B09ATT3-BT	31.5	40.7	63	1345		Interp.
	SV-HP040B09ATT3-BT	31.5	40.7	63	1499		Interp.
	SV-HP050B09ATT3-BT	31.5	40.7	63	1610		Interp.
	SV-HP010H09ATT3-BT	31.5	40.7	63	925		Interp.
	SV-HP020H09ATT3-BT	31.5	40.7	63	1168		Interp.
	SV-HP030H09ATT3-BT	31.5	40.7	63	1345		Interp.
	SV-HP040H09ATT3-BT	31.5	40.7	63	1499		Interp.
	SV-HP050H09ATT3-BT	31.5	40.7	63	1610		Interp.
Power Wave 4 (Cabinet Type B)	SV-PW060B05ATT3-BT	31.5	62.4	63	1737		Interp.
	SV-PW080B05ATT3	31.5	62.4	63	1961		Interp.
	SV-PW100B05ATT3	31.5	62.4	63	2669		Interp.
	SV-PW120B05ATT3	31.5	62.4	63	2823		Interp.
	SV-PW060H05ATT3-BT	31.5	62.4	63	1737		Interp.
	SV-PW080H05ATT3	31.5	62.4	63	1961		Interp.
	SV-PW100H05ATT3	31.5	62.4	63	2669		Interp.
	SV-PW120H05ATT3	31.5	62.4	63	3223		Interp.

TRU Compliance, by Structural Integrity Associates, Inc.  
 844-TRU-0200 | info@trucompliance.com

# SPECIAL SEISMIC CERTIFICATION CERTIFIED COMPONENT MATRIX

2000232-CR-001-R1



<b>Manufacturer:</b> Online Power Inc.	<b>TABLE 1</b>
<b>Model Line:</b> Power Wave 4	

**Certified Product Construction Summary:**  
**Base & Top:** 12 GA. carbon steel, **Back & Sides:** 14 GA. carbon steel, **Doors:** 16 GA. carbon steel.

**Certified Options Summary:**  
 Input/Output voltage: 480Y/277 OR 208Y/120

**Mounting Configuration:**  
 Base mounted - rigid  
 Note: Installed mounting configuration must be of similar configuration and equivalent strength and stiffness to those tested.

**Building Code:** CBC 2019      **Seismic Certification Limits:**  $S_{DS} = 1.6g$   $z/h = 0.0$        $I_p = 1.5$

Model Line	Model	Dimensions (in)			Weight (lb)	Notes	UUT
		Depth	Width	Height			
Power Wave 4 (Cabinet Type B)	SV-PW160H05ATT3	31.5	62.4	63	3317		Interp.
	SV-PW060H09ATT3-BT	31.5	62.4	63	1737		Interp.
	SV-PW080H09ATT3	31.5	62.4	63	1961		Interp.
	SV-PW100H09ATT3	31.5	62.4	63	2669		Interp.
	SV-PW120H09ATT3	31.5	62.4	63	2823		Interp.
	SV-PW160H09ATT3	31.5	62.4	63	3317		Interp.
	SV-PW060B09ATT3-BT	31.5	62.4	63	1737		Interp.
	SV-PW080B09ATT3	31.5	62.4	63	1961		Interp.
	SV-PW100B09ATT3	31.5	62.4	63	2669		Interp.
	SV-PW120B09ATT3	31.5	62.4	63	3223		Interp.
	SV-HP060B05ATT3-BT	31.5	62.4	63	1737		Interp.
	SV-HP080B05ATT3	31.5	62.4	63	1961		Interp.
	SV-HP100B05ATT3	31.5	62.4	63	2669		Interp.
	SV-HP120B05ATT3	31.5	62.4	63	3223		Interp.
	SV-HP060H05ATT3-BT	31.5	62.4	63	1737		Interp.
	SV-HP080H05ATT3	31.5	62.4	63	1961		Interp.
	SV-HP100H05ATT3	31.5	62.4	63	2669		Interp.
	SV-HP120H05ATT3	31.5	62.4	63	2823		Interp.
	SV-HP160H05ATT3	31.5	62.4	63	3317		Interp.
	SV-HP060H09ATT3	31.5	62.4	63	1737		Interp.
	SV-HP080H09ATT3	31.5	62.4	63	1961		Interp.
	SV-HP100H09ATT3	31.5	62.4	63	2669		Interp.
	SV-HP120H09ATT3	31.5	62.4	63	2823		Interp.
	SV-HP060B09ATT3-BT	31.5	62.4	63	1737		Interp.



# SPECIAL SEISMIC CERTIFICATION CERTIFIED COMPONENT MATRIX

2000232-CR-001-R1



<b>Manufacturer:</b> Online Power Inc. <b>Model Line:</b> Power Wave 4	<b>TABLE 1</b>
---	----------------

**Certified Product Construction Summary:**  
**Base & Top:** 12 GA. carbon steel, **Back & Sides:** 14 GA. carbon steel, **Doors:** 16 GA. carbon steel.

**Certified Options Summary:**  
 Input/Output voltage: 480Y/277 OR 208Y/120

**Mounting Configuration:**  
 Base mounted - rigid  
 Note: Installed mounting configuration must be of similar configuration and equivalent strength and stiffness to those tested.

**Building Code: CBC 2019**      **Seismic Certification Limits:**       $S_{DS} = 1.6g$        $z/h = 0.0$        $I_p = 1.5$

Model Line	Model	Dimensions (in)			Weight (lb)	Notes	UUT
		Depth	Width	Height			
Power Wave 4 (Cabinet Type B)	SV-HP080B09ATT3	31.5	62.4	63	1961		Interp.
	SV-HP100B09ATT3	31.5	62.4	63	2669		Interp.
	SV-HP120B09ATT3	31.5	62.4	63	2823		Interp.
	SV-HP160H09ATT3	31.5	62.4	63	3750.5		2

# SPECIAL SEISMIC CERTIFICATION CERTIFIED COMPONENT MATRIX



2000232-CR-001-R1

<b>Manufacturer:</b> Online Power Inc.	<b>TABLE 2</b>
<b>Model Line:</b> Power Wave-MBC	

**Certified Product Construction Summary:**  
**Base & Top:** 12 GA. carbon steel, **Back & Sides:** 14 GA. carbon steel, **Doors:** 16 GA. carbon steel.

**Certified Options Summary:**  
 Input/Output voltage: 480Y/277 OR 208Y/120

**Mounting Configuration:**  
 Base mounted - rigid  
 Note: Installed mounting configuration must be of similar configuration and equivalent strength and stiffness to those tested.

**Building Code:** CBC 2019      **Seismic Certification Limits:**  $S_{DS} = 1.6g$   $z/h = 0.0$        $I_p = 1.5$

Model Line	Model	Dimensions (in)			Weight (lb)	Notes	UUT
		Depth	Width	Height			
PowerWave Maintenance Bypass Cabinet (MBC) Cabinet Type C	SV-NP010H0900I3-BT	31.5	28.75	63	526.5		3
	SV-NP020H0900I3-BT	31.5	28.75	63	558		Interp.
	SV-NP030H0900I3-BT	31.5	28.75	63	558		Interp.
	SV-NP040H0900I3-BT	31.5	28.75	63	558		Interp.
	SV-NP050H0900I3-BT	31.5	28.75	63	790		Interp.
	SV-NP060H0900I3-BT	31.5	28.75	63	790		Interp.
	SV-NP080H0900I3-BT	31.5	28.75	63	950		Interp.
	SV-NP100H0900I3-BT	31.5	28.75	63	950		Interp.
	SV-NP120H0900I3-BT	31.5	28.75	63	950		Interp.
	SV-NP160H0900I3-BT	31.5	28.75	63	950		Interp.
	SV-NP010H0500I3-BT	31.5	28.75	63	496		Interp.
	SV-NP020H0500I3-BT	31.5	28.75	63	558		Interp.
	SV-NP030H0500I3-BT	31.5	28.75	63	558		Interp.
	SV-NP040H0500I3-BT	31.5	28.75	63	558		Interp.
	SV-NP050H0500I3-BT	31.5	28.75	63	790		Interp.
	SV-NP060H0500I3-BT	31.5	28.75	63	790		Interp.
	SV-NP080H0500I3-BT	31.5	28.75	63	950		Interp.
	SV-NP100H0500I3-BT	31.5	28.75	63	950		Interp.
	SV-NP120H0500I3-BT	31.5	28.75	63	950		Interp.
	SV-NP160H0500I3-BT	31.5	28.75	63	950		Interp.
	SV-NP010B0900I3-BT	31.5	28.75	63	496		Interp.
	SV-NP020B0900I3-BT	31.5	28.75	63	558		Interp.
	SV-NP030B0900I3-BT	31.5	28.75	63	558		Interp.
	SV-NP040B0900I3-BT	31.5	28.75	63	558		Interp.

TRU Compliance, by Structural Integrity Associates, Inc.

844-TRU-0200 | info@trucompliance.com

# SPECIAL SEISMIC CERTIFICATION CERTIFIED COMPONENT MATRIX



2000232-CR-001-R1

<b>Manufacturer:</b> Online Power Inc.	<h2>TABLE 2</h2>
<b>Model Line:</b> Power Wave-MBC	

**Certified Product Construction Summary:**  
**Base & Top:** 12 GA. carbon steel, **Back & Sides:** 14 GA. carbon steel, **Doors:** 16 GA. carbon steel.

**Certified Options Summary:**  
Input/Output voltage: 480Y/277 OR 208Y/120

**Mounting Configuration:**  
Base mounted - rigid  
Note: Installed mounting configuration must be of similar configuration and equivalent strength and stiffness to those tested.

**Building Code:** CBC 2019      **Seismic Certification Limits:**  $S_{DS} = 1.6g$   $z/h = 0.0$        $I_p = 1.5$

Model Line	Model	Dimensions (in)			Weight (lb)	Notes	UUT
		Depth	Width	Height			
Maintenance Bypass Cabinet (MBC) Cabinet Type C	SV-NP050B0900I3-BT	31.5	28.75	63	790		Interp.
	SV-NP060B0900I3-BT	31.5	28.75	63	790		Interp.
	SV-NP080B0900I3-BT	31.5	28.75	63	950		Interp.
	SV-NP010B0500I3-BT	31.5	28.75	63	496		Interp.
	SV-NP020B0500I3-BT	31.5	28.75	63	558		Interp.
	SV-NP030B0500I3-BT	31.5	28.75	63	558		Interp.
	SV-NP040B0500I3-BT	31.5	28.75	63	558		Interp.
	SV-NP050B0500I3-BT	31.5	28.75	63	790		Interp.
	SV-NP060B0500I3-BT	31.5	28.75	63	790		Interp.
	SV-NP080B0500I3-BT	31.5	28.75	63	946		4

# SPECIAL SEISMIC CERTIFICATION CERTIFIED SUBCOMPONENT MATRIX

2000232-CR-001-R1



<b>Manufacturer:</b> Online Power Inc.		<b>Table Description:</b> Transformers			<b>TABLE 3</b>	
<b>Model Line:</b> Power Wave 4						
<b>Building Code:</b> CBC 2019		<b>Seismic Certification Limits:</b> $S_{DS} = 1.6 g$ $z/h = 0.0$			$I_p = 1.5$	
Component Type	Manufacturer	Model	Description	Notes	UUT	
Input Transformer	Online Power Inc.	ST-103A3-208360-9A	10 kva, 6 pulse, 208/120V, AL Winding	95 lbs	Extrap.	
		ST-103A3-360480-9A	10 kva, 6 pulse, 480/277V, AL Winding	66 lbs	Extrap.	
		ST-103IP-360360-9A	10 kva, 12 pulse, 208/120V, AL Winding	138 lbs	Extrap.	
		ST-103IP-480360-9A2(Y)	10 kva, 12 pulse, 480/277V, AL Winding	119 lbs	Extrap.	
		ST-203A3-208360-9A	20 kva, 6 pulse, 208/120V, AL Winding	141 lbs	Extrap.	
		ST-203A3-360480-9AP10	20 kva, 6 pulse, 480/277V, AL Winding	103 lbs	Extrap.	
		ST-203IP-360360-9A2	20 kva, 12 pulse, 208/120V, AL Winding	189 lbs	Extrap.	
		ST-203IP-480360-9A2Y	20 kva, 12 pulse, 480/277V, AL Winding	1557 lbs	Extrap.	
		ST-303A3-208360-9A	30 kva, 6 pulse, 208/120V, AL Winding	196 lbs	Extrap.	
		ST-303A3-360480-9A	30 kva, 6 pulse, 480/277V, AL Winding	141lbs	Extrap.	
		ST-303IP-360360-9A	30 kva, 12 pulse, 208/120V, AL Winding	276 lbs	Extrap.	
		ST-303IP-480360-9A	30 kva, 12 pulse, 480/277V, AL Winding	215 lbs	Extrap.	
		ST-403A3-208360-9AY	40 kva, 6 pulse, 208/120V, AL Winding	298 lbs	Extrap.	
		ST-403A3-360480-9A	40 kva, 6 pulse, 480/277V, AL Winding	161 lbs	Extrap.	
		ST-403IP-360360-9AY	40 kva, 12 pulse, 208/120V, AL Winding	346 lbs	Extrap.	
		ST-403IP-480360-9A2Y	40 kva, 12 pulse, 480/277V, AL Winding	259 lbs	Extrap.	
		ST-503A3-208360-9A	50 kva, 6 pulse, 208/120V, AL Winding	302 lbs	Extrap.	
		ST-503A3-360480-9AY	50 kva, 6 pulse, 480/277V, AL Winding	183 lbs	Extrap.	
		ST-503IP-360360-9A2	50 kva, 12 pulse, 208/120V, AL Winding	393 lbs	Extrap.	
		ST-503IP-480360-9AY	50 kva, 12 pulse, 480/277V, AL Winding	289 lbs	Extrap.	
ST-603A3-208360-9A	60 kva, 6 pulse, 208/120V, AL Winding	278 lbs	Extrap.			
ST-603A3-360480-9A	60 kva, 6 pulse, 480/277V, AL Winding	294 lbs	Extrap.			
ST-603IP-360360-9A(12P)	60 kva, 12 pulse, 208/120V, AL Winding	449 lbs	Extrap.			

TRU Compliance, by Structural Integrity Associates, Inc.

844-TRU-0200 | info@trucompliance.com

# SPECIAL SEISMIC CERTIFICATION CERTIFIED SUBCOMPONENT MATRIX

2000232-CR-001-R1



<b>Manufacturer:</b> Online Power Inc. <b>Model Line:</b> Power Wave 4		<b>Table Description:</b> Transformers			<b>TABLE 3</b>	
<b>Building Code:</b> CBC 2019		<b>Seismic Certification Limits:</b> $S_{DS} = 1.6g$ $z/h = 0.0$			$I_p = 1.5$	
Component Type	Manufacturer	Model	Description	Notes	UUT	
Input Transformer	Online Power Inc.	ST-603IP-480360-9A(12P)	60 kva, 12 pulse, 480/277V, AL Winding	449 lbs	1	
		ST-803IP-360360-9AY	80 kva, 12 pulse, 208/120V, AL Winding	536 lbs	Interp.	
		ST-803IP-480360-9AY(12P)	80 kva, 12 pulse, 480/277V, AL Winding	426 lbs	Interp.	
		ST-104IP-360360-9AY	100 kva, 12 pulse, 208/120V, AL Winding	728 lbs	Interp.	
		ST-104IP-480360-9AP10	100 kva, 12 pulse, 480/277V, AL Winding	505 lbs	Interp.	
		ST-124IP-360360-9A2	120 kva, 12 pulse, 208/120V, AL Winding	734 lbs	Interp.	
		ST-124IP-480360-9A2Y(12P)	120 kva, 12 pulse, 480/277V, AL Winding	602 lbs	Interp.	
		ST-164IP-208360-9A2Y	160 kva, 12 pulse, 208/120V, AL Winding	875 lbs	Interp.	
Output Transformer	Online Power Inc.	ST-164IP-480360-9A2	160 kva, 12 pulse, 480/277V, AL Winding	666 lbs	2	
		ST-103I3-208120-9A	10 kva, 6 pulse, 208/120V, AL Winding	178 lbs	Extrap.	
		ST-103I3-208277-9A2	10 kva, 6 pulse, 480/277V, AL Winding	175 lbs	Extrap.	
		ST-103I3-208120-9A	10 kva, 12 pulse, 208/120V, AL Winding	178 lbs	Extrap.	
		ST-103I3-208277-9A2	10 kva, 12 pulse, 480/277V, AL Winding	175 lbs	Extrap.	
		ST-203I3-208120-9A	20 kva, 6 pulse, 208/120V, AL Winding	231 lbs	Extrap.	
		ST-203I3-208277-9A2	20 kva, 6 pulse, 480/277V, AL Winding	237 lbs	Extrap.	
		ST-203I3-208120-9A	20 kva, 12 pulse, 208/120V, AL Winding	175 lbs	Extrap.	
		ST-203I3-208277-9A2	20 kva, 12 pulse, 480/277V, AL Winding	237 lbs	Extrap.	
		ST-303I3-208060-9A2	30 kva, 6 pulse, 208/120V, AL Winding	316 lbs	Extrap.	
		ST-303I3-208277-9A2	30 kva, 6 pulse, 480/277V, AL Winding	313 lbs	Extrap.	
		ST-303I3-208060-9A2	30 kva, 12 pulse, 208/120V, AL Winding	316 lbs	Extrap.	
		ST-303I3-208277-9A2	30 kva, 12 pulse, 480/277V, AL Winding	313 lbs	Extrap.	
		ST-403I3-208060-9A	40 kva, 6 pulse, 208/120V, AL Winding	446 lbs	Extrap.	
ST-403I3-208277-9A	40 kva, 6 pulse, 480/277V, AL Winding	417 lbs	Extrap.			

TRU Compliance, by Structural Integrity Associates, Inc.

844-TRU-0200 | info@trucompliance.com

# SPECIAL SEISMIC CERTIFICATION CERTIFIED SUBCOMPONENT MATRIX

2000232-CR-001-R1



<b>Manufacturer:</b> Online Power Inc. <b>Model Line:</b> Power Wave 4		<b>Table Description:</b> Transformers			<b>TABLE 3</b>	
<b>Building Code:</b> CBC 2019		<b>Seismic Certification Limits:</b> $S_{DS} = 1.6g$ $z/h = 0.0$			$I_p = 1.5$	
Component Type	Manufacturer	Model	Description	Notes	UUT	
Output Transformer	Online Power Inc.	ST-403I3-208060-9A	40 kva, 12 pulse, 208/120V, AL Winding	446 lbs	Extrap.	
		ST-403I3-208277-9A	40 kva, 12 pulse, 480/277V, AL Winding	417 lbs	Extrap.	
		ST-503I3-208060-9A	50 kva, 6 pulse, 208/120V, AL Winding	460 lbs	Extrap.	
		ST-503I3-208277-9A	50 kva, 6 pulse, 480/277V, AL Winding	429 lbs	Extrap.	
		ST-503I3-208060-9A	50 kva, 12 pulse, 208/120V, AL Winding	460 lbs	Extrap.	
		ST-503I3-208277-9A	50 kva, 12 pulse, 480/277V, AL Winding	429 lbs	Extrap.	
		ST-603I3-208120-9A2	60 kva, 6 pulse, 208/120V, AL Winding	503 lbs	Extrap.	
		ST-603I3-208277-9A2	60 kva, 6 pulse, 480/277V, AL Winding	488 lbs	Extrap.	
		ST-603I3-208120-9A2	60 kva, 12 pulse, 208/120V, AL Winding	503 lbs	Extrap.	
		ST-603I3-208277-9A2	60 kva, 12 pulse, 480/277V, AL Winding	503 lbs	1	
		ST-803I3-208208-9AM10	80 kva, 12 pulse, 208/120V, AL Winding	728 lbs	Interp.	
		ST-803I3-208277-9AP10S	80 kva, 12 pulse, 480/277V, AL Winding	726 lbs	Interp.	
		ST-104I3-208208-9AS	100 kva, 12 pulse, 208/120V, AL Winding	866 lbs	Interp.	
		ST-104I3-208277-9A2S	100 kva, 12 pulse, 480/277V, AL Winding	840 lbs	Interp.	
		ST-124I3-208060-9A	120 kva, 12 pulse, 208/120V, AL Winding	990 lbs	Interp.	
		ST-124I3-208277-9A	120 kva, 12 pulse, 480/277V, AL Winding	913 lbs	Interp.	
		ST-164I3-208120-9A	160 kva, 12 pulse, 208/120V, AL Winding	1215 lbs	Interp.	
ST-164I3-208277-9AS	160 kva, 12 pulse, 480/277V, AL Winding	1215 lbs	2			



# SPECIAL SEISMIC CERTIFICATION CERTIFIED SUBCOMPONENT MATRIX

2000232-CR-001-R1



<b>Manufacturer:</b> Online Power Inc. <span style="float: right;"><b>Table Description:</b> Choke</span>		<b>TABLE 4</b>			
<b>Model Line:</b> Power Wave 4					
<b>Building Code:</b> CBC 2019		<b>Seismic Certification Limits:</b> $S_{DS} = 1.6g$ $z/h = 0.0$		$I_p = 1.5$	
Component Type	Manufacturer	Model	Description	Notes	UUT
Inv Choke	Online Power Inc.	ST-103INVC-A	10 kva, 6 pulse, 12 pulse	24 lbs	Extrap.
		ST-203INVC-AM23	20 kva, 6 pulse, 12 pulse	29 lbs	Extrap.
		ST-303INVC-A	30 kva, 6 pulse, 12 pulse	51 lbs	Extrap.
		ST-403INVC-A	40 kva, 6 pulse, 12 pulse	53 lbs	Extrap.
		ST-503INVC-A	50 kva, 6 pulse, 12 pulse	68 lbs	Extrap.
		ST-603INVC-A	60 kva, 6 pulse, 12 pulse	86 lbs	1
		ST-803INVC-A	80 kva, 12 pulse	106 lbs	Interp.
		ST-104INVC-8A	100 kva, 12 pulse	128 lbs	Interp.
		ST-124INVC-A	120 kva, 12 pulse	179 lbs	Interp.
		ST-164INVC-AM7	160 kva, 12 pulse	181 lbs	2
Input Choke	Online Power Inc.	ST-103RC-A	10 kva, 6 pulse	33 lbs	Extrap.
		ST-103C3-063103-A-40	10 kva, 12 pulse	26 lbs	Extrap.
		ST-203RC-A	20 kva, 6 pulse; 40 kva, 12 pulse	46 lbs	Extrap.
		ST-103RC-AS	20 kva, 12 pulse	35 lbs	Extrap.
		ST-303RC-A	30 kva, 6 pulse; 60 kva, 12 pulse	55 lbs	Extrap.
		ST-153RC-A	30 kva, 12 pulse	60 lbs	Extrap.
		ST-403RC-A	40 kva, 6 pulse; 80 kva, 12 pulse	79 lbs	Extrap.
		ST-503RC-A	50 kva, 6 pulse; 100 kva, 12 pulse	79 lbs	Extrap.
		ST-253INVC-A	50 kva, 12 pulse	80 lbs	Extrap.
		ST-603RC-A	60 kva, 6 pulse; 120 kva, 12 pulse	95 lbs	1
ST-164IPC-A	160 kva, 12 pulse	106 lbs	2		

# SPECIAL SEISMIC CERTIFICATION CERTIFIED SUBCOMPONENT MATRIX

2000232-CR-001-R1



<b>Manufacturer:</b> Online Power Inc.	<b>Table Description:</b> Circuit Breakers	<b>TABLE 5</b>
<b>Model Line:</b> Power Wave 4		

<b>Building Code:</b> CBC 2019	<b>Seismic Certification Limits:</b> $S_{DS} = 1.6g$ $z/h = 0.0$	$I_p = 1.5$
--------------------------------	--	-------------

Component Type	Manufacturer	Model	Description	Notes	UUT
Circuit Breakers	ABB Inc.	XT1HU3020AFF000XXX	3 POLE 20A, MCCB, 4lbs		Extrap.
		XT1HU3030AFF000XXX	3 POLE 30A, MCCB, 4lbs		Extrap.
		XT1HU3040AFF000XXX	3 POLE 40A, MCCB, 4lbs		Extrap.
		XT1HU3060AFF000XXX	3 POLE 60A, MCCB, 4lbs		Extrap.
		XT1HU3080AFF000XXX	3 POLE 80A, MCCB, 4lbs		Extrap.
		XT1HU3100AFF000XXX	3 POLE 100A, MCCB, 4lbs		Extrap.
		XT1HU3125AFF000XXX	3 POLE 125A, MCCB, 4lbs		Extrap.
		XT1SU3015AFF000XXX	3 POLE 15A, MCCB, 4lbs		Extrap.
		XT1SU3020AFF000XXX	3 POLE 20A, MCCB, 4lbs		1, 3
		XT1SU3025AFF000XXX	3 POLE 25A, MCCB, 4lbs		Interp.
		XT1SU3030AFF000XXX	3 POLE 30A, MCCB, 4lbs		1, 3
		XT1SU3035AFF000XXX	3 POLE 35A, MCCB, 4lbs		Interp.
		XT1SU3040AFF000XXX	3 POLE 40A, MCCB, 4lbs		3
		XT1SU3045AFF000XXX	3 POLE 45A, MCCB, 4lbs		Interp.
		XT1SU3050AFF000XXX	3 POLE 50A, MCCB, 4lbs		Interp.
		XT1SU3060AFF000XXX	3 POLE 60A, MCCB, 4lbs		Interp.
		XT1SU3070AFF000XXX	3 POLE 70A, MCCB, 4lbs		Interp.
		XT1SU3080AFF000XXX	3 POLE 80A, MCCB, 4lbs		Interp.
		XT1SU3090AFF000XXX	3 POLE 90A, MCCB, 4lbs		Interp.
		XT1SU3100AFF000XXX	3 POLE 100A, MCCB, 4lbs		Interp.
XT1SU3125AFF000XXX	3 POLE 125A, MCCB, 4lbs		Interp.		
XT2NU3050AFF000XXX	3 POLE 50A, MCCB, 5lbs		1		
XT3NU3080AFF000XXX	3 POLE 80A, MCCB, 7lbs		Interp.		

# SPECIAL SEISMIC CERTIFICATION CERTIFIED SUBCOMPONENT MATRIX

2000232-CR-001-R1



<b>Manufacturer:</b> Online Power Inc. <span style="float: right;"><b>Table Description:</b> Circuit Breakers</span>		<b>TABLE 5</b>			
<b>Model Line:</b> Power Wave 4					
<b>Building Code:</b> CBC 2019		<b>Seismic Certification Limits:</b> $S_{DS} = 1.6g$ $z/h = 0.0$		$I_p = 1.5$	
Component Type	Manufacturer	Model	Description	Notes	UUT
Circuit Breakers	ABB Inc.	XT3NU3125AFF000XXX	3 POLE 125A, MCCB, 7lbs		Interp.
		XT3NU3200AFF000XXX	3 POLE 200A, MCCB, 7lbs		2
		XT4HU3150AFF000XXX	3 POLE 150A, MCCB, 9lbs		Interp.
		XT4HU3175AFF000XXX	3 POLE 175A, MCCB, 9lbs		Interp.
		XT4HU3200AFF000XXX	3 POLE 200A, MCCB, 9lbs		Interp.
		XT4HU3225AFF000XXX	3 POLE 225A, MCCB, 9lbs		Interp.
		XT4HU3250AFF000XXX	3 POLE 250A, MCCB, 9lbs		Interp.
		XT4NU3150AFF000XXX	3 POLE 150A, MCCB, 9lbs		Interp.
		XT4NU3175AFF000XXX	3 POLE 175A, MCCB, 9lbs		Interp.
		XT4NU3200AFF000XXX	3 POLE 200A, MCCB, 9lbs		2, 4
		XT4NU3225AFF000XXX	3 POLE 225A, MCCB, 9lbs		4
		XT4NU3250AFF000XXX	3 POLE 250A, MCCB, 9lbs		2
		S201-C20	1 POLE 20A, MCCB, 1lb		3
		SU204M-K20	4 POLE 20A, MCCB, 1lb		3
		XT1SU4125AFF000XXX	4 POLE 125A, MCCB, 6lbs		Interp.
		XT1SU4060AFF000XXX	4 POLE 60A, MCCB, 6lbs		Interp.
		XT1SU4030AFF000XXX	4 POLE 30A, MCCB, 6lbs		3
		T5N300TW-A	2 POLE 300A, MCCB, 6lbs		2
		XT1SU3020AFF000XXX +KXTAAXCQYFP	3 POLE 20A, W/AUX, MCCB, 6lbs		1
		T5N300TW	3 POLE 300A, W/AUX, MCCB, 6lbs		2
T5N600BW	2 POLE 300A, MCCB, 6lbs		2		
T5N400TW	3 POLE 400A, MCCB, 6lbs		2		

# SPECIAL SEISMIC CERTIFICATION CERTIFIED SUBCOMPONENT MATRIX

2000232-CR-001-R1



<b>Manufacturer:</b> Online Power Inc. <b>Model Line:</b> Power Wave 4		<b>Table Description:</b> Electrical Accessories		<b>TABLE 6</b>	
<b>Building Code:</b> CBC 2019		<b>Seismic Certification Limits:</b> $S_{DS} = 1.6g$ $z/h = 0.0$		$I_p = 1.5$	
Component Type	Manufacturer	Model	Description	Notes	UUT
Terminal Block	Dinkle	DK10	DIN Rail Terminal Blocks, Screw Connection, M4, 600V, 60A		3
		DK16	DIN Rail Terminal Blocks, Screw Connection, M5, 600V, 100A		Interp.
		DK35	DIN Rail Terminal Blocks, Screw Connection, M6, 600V, 150A		Interp.
		DK50	DIN Rail Terminal Blocks, Screw Connection, M6, 600V, 150A		4
		DK95	DIN Rail Terminal Blocks, Screw Connection, M8, 600V, 230A		4
		DK150	DIN Rail Terminal Blocks, Screw Connection, M10, 600V, 275A		Interp.
		DK240	DIN Rail Terminal Blocks, Screw Connection, M10, 600V, 370A		4
Fuse Holder	Mersen	USM1	Fuse Holder 1 Pole, 600V, 30A, DIN Rail		3, 4
Fuse	Little Fuse	FLQ1/2	0.5A 500VAC, TYPE SLO-BLO		3, 4
Transient Voltage Suppressor	FERRAZ	ST4803PYG	TVSS 480Y/277V 3PH WYE		3, 4
		ST2083PYG	TVSS 208Y/120V 3PH WYE		Interp.
Control Transformer	MCI	4-49-6611	XRMR, Supply, 50 VA, 60 HZ, PRI, 120/208V		3, 4
Bypass Switch	EPC	N40 US13779-01	SW, B/P, 4P, 600V, 50A, 5 AUX SW		Interp.
		A200 US13681-01	SW, B/P, 4P, 600V, 200A, 5 AUX SW		4
		N125 US13680-01	SW, B/P, 4P, 600V, 125A, 5 AUX SW		3



# UNIT UNDER TEST (UUT) SUMMARY SHEET

2000232-CR-001-R1



<b>Manufacturer:</b> Online Power Inc.	<b>UUT 1</b>
<b>Model Line:</b> Power Wave 4	
<b>Model Number:</b> SV-PW060H09ATT3 <b>Serial Number:</b> N/A	

**Product Construction Summary:**  
**Base & Top:** 12GA. Carbon steel, **Back & Sides:** 14GA. Carbon steel, **Doors:** 16 GA. Carbon steel.

**Options/Subcomponent Summary:**  
**Input Transformer:** ST-603IP-480360-9A(12P), **Output Transformer:** ST-603I3-208277-9A2, **Inv Choke:** ST-603INVC-A, **Input Choke:** ST-603RC-A, **Circuit Breakers:** XT1SU3020AFF000XXX, XT1SU3030AFF000XXX, XT2NU3050AFF000XXX, XT11SU3020AFF000XXX+KXTAAXCQYFP

**UUT Properties**

Weight (lb)	Dimension (in)			Lowest Natural Frequency (Hz)		
	Depth	Width	Height	Front-Back	Side-Side	Vertical
1751	31.5	40.7	63	13.6	11.0	16.0

**UUT Highest Passed Seismic Run Information**

Building Code	Test Criteria	S <sub>DS</sub> (g)	z/h	I <sub>P</sub>	A <sub>FLX-H</sub> (g)	A <sub>RIG-H</sub> (g)	A <sub>FLX-V</sub> (g)	A <sub>RIG-V</sub> (g)
CBC 2019	ICC-ES AC156	1.6	0.0	1.5	1.60	0.64	1.07	0.43

**Test Mounting Details:**



Base Mounted Rigid: Ten (10) 5/8" Grade 5 bolts.  
 Unit maintained structural integrity and remained functional per manufacturer requirement after shake table test.  
 Contents were included in testing per operating conditions.



# UNIT UNDER TEST (UUT) SUMMARY SHEET

2000232-CR-001-R1



<b>Manufacturer:</b> Online Power Inc.	<b>UUT 2</b>
<b>Model Line:</b> Power Wave 4	
<b>Model Number:</b> SV-HP160H09ATT3 <b>Serial Number:</b> N/A	

**Product Construction Summary:**  
**Base & Top:** 12GA. Carbon steel, **Back & Sides:** 14GA. Carbon steel, **Doors:** 16 GA. Carbon steel.

**Options/Subcomponent Summary:**  
**Input Transformer:** ST-164IP-480360-9A2, **Output Transformer:** ST-164I3-208277-9AS, **Inv. Choke:** ST-164INVC-AM7, **Input Choke:** ST-164IPC-A, **Circuit Breakers:** XT3NU3200AFF000XXX, XT4NU3200AFF000XXX, XT4NU3250AFF000XXX, T5N300TW-A, T5N300TW, T5N600BW, T5N400TW.

**UUT Properties**

Weight (lb)	Dimension (in)			Lowest Natural Frequency (Hz)		
	Depth	Width	Height	Front-Back	Side-Side	Vertical
3750.5	31.5	62.4	63	10.2	8.1	>33

**UUT Highest Passed Seismic Run Information**

Building Code	Test Criteria	S <sub>DS</sub> (g)	z/h	I <sub>P</sub>	A <sub>FLX-H</sub> (g)	A <sub>RIG-H</sub> (g)	A <sub>FLX-V</sub> (g)	A <sub>RIG-V</sub> (g)
CBC 2019	ICC-ES AC156 03/26/2021	1.62	0.0	1.5	1.60	0.64	1.07	0.43

**Test Mounting Details:**



Base Mounted Rigid: Ten (10) 5/8" Grade 5 bolts.  
 Unit maintained structural integrity and remained functional per manufacturer requirement after shake table test.  
 Contents were included in testing per operating conditions.

# UNIT UNDER TEST (UUT) SUMMARY SHEET

2000232-CR-001-R1



<b>Manufacturer:</b> Online Power Inc.	<b>UUT 3</b>
<b>Model Line:</b> Maintenance Bypass Cabinet	
<b>Model Number:</b> SV-NP010H090013-BT <b>Serial Number:</b> N/A	

**Product Construction Summary:**  
**Base & Top:** 12GA. Carbon steel, **Back & Sides:** 14GA. Carbon steel, **Doors:** 16 GA. Carbon steel.

**Options/Subcomponent Summary:**  
**Circuit Breakers:** XT1SU3020AFF000XXX, XT1SU3030AFF000XXX, XT1SU3040AFF000XXX, ST201M-C20 or ST201-C20, SU204M-K20, XT1SU4030AFF000XXX, **Terminal Block:** DK10, **Fuse Holder:** USM1I, **Fuse:** FLQ1/2, **Voltage Suppressor:** ST4803PYG, **Control Transformer:** 4-49-6611, **Bypass Switch:** N125 US13680-01.

**UUT Properties**

Weight (lb)	Dimension (in)			Lowest Natural Frequency (Hz)		
	Depth	Width	Height	Front-Back	Side-Side	Vertical
526.5	31.5	28.75	63	20.6	11.0	>33

**UUT Highest Passed Seismic Run Information**

Building Code	Test Criteria	S <sub>DS</sub> (g)	z/h	I <sub>P</sub>	A <sub>FLX-H</sub> (g)	A <sub>RIG-H</sub> (g)	A <sub>FLX-V</sub> (g)	A <sub>RIG-V</sub> (g)
CBC 2019	ICC-ES AC156	1.6	0.0	1.5	1.60	0.64	1.07	0.43

**Test Mounting Details:**



Base Mounted Rigid: Ten (10) 5/8" Grade 5 bolts.  
 Unit maintained structural integrity and remained functional per manufacturer requirement after shake table test.  
 Contents were included in testing per operating conditions.

# UNIT UNDER TEST (UUT) SUMMARY SHEET

2000232-CR-001-R1



<b>Manufacturer:</b> Online Power Inc.	<b>UUT 4</b>
<b>Model Line:</b> Maintenance Bypass Cabinet	
<b>Model Number:</b> SV-NP080B050013-BT <b>Serial Number:</b> N/A	

**Product Construction Summary:**  
**Base & Top:** 12GA. Carbon steel, **Back & Sides:** 14GA. Carbon steel, **Doors:** 16 GA. Carbon steel.

**Options/Subcomponent Summary:**  
**Circuit Breakers:** XT4NU3200AFF000XXX, XT4NU3225AFF000XXX, **Terminal Block:** DK50, DK95, DK240, **Fuse Holder:** USM1I, **Fuse:** FLQ1/2, **Voltage Suppressor:** ST4803PYG, **Control Transformer:** 4-49-6611, **Bypass Switch:** A200 US13681-01.

**UUT Properties**

Weight (lb)	Dimension (in)			Lowest Natural Frequency (Hz)		
	Depth	Width	Height	Front-Back	Side-Side	Vertical
946	31.5	28.75	63	17.9	13.2	25.0

**UUT Highest Passed Seismic Run Information**

Building Code	Test Criteria	S <sub>DS</sub> (g)	z/h	I <sub>p</sub>	A <sub>FLX-H</sub> (g)	A <sub>RIG-H</sub> (g)	A <sub>FLX-V</sub> (g)	A <sub>RIG-V</sub> (g)
CBC 2019	ICC-ES AC156	1.6	0.0	1.5	1.60	0.64	1.07	0.43

**Test Mounting Details:**



Base Mounted Rigid: Ten (10) 5/8" Grade 5 bolts.  
 Unit maintained structural integrity and remained functional per manufacturer requirement after shake table test.  
 Contents were included in testing per operating conditions.