



DEPARTMENT OF HEALTH CARE ACCESS AND INFORMATION
OFFICE OF STATEWIDE HOSPITAL PLANNING AND DEVELOPMENT

**APPLICATION FOR HCAI SPECIAL SEISMIC
CERTIFICATION PREAPPROVAL (OSP)**

OFFICE USE ONLY

APPLICATION #: OSP-0704

HCAI Special Seismic Certification Preapproval (OSP)

Type: New Renewal

Manufacturer Information

Manufacturer: Otis Elevator Company

Manufacturer's Technical Representative: John Kleine

Mailing Address: 1500 OTIS Way, Florence, SC 29501

Telephone: (843) 432-4134

Email: john.kleine@otis.com

Product Information

Product Name: Global Control System (GCS1) Controller Assemblies

Product Model Number(s): See Attachment 1, Tables 1 & 2

Product Category: Elevator Equipment

Product Sub-Category: Elevator Controllers

General Description: Elevator controller assemblies that receive dispatch commands, control elevator car floor movement, and contain elevator motor drive and brake electronics.

Mounting Description: Base Mounted Rigid

Tested Seismic Enhancements: Seismic enhancements made to the test units and/or modifications required to address anomalies during the tests shall be incorporated into the production units.

Applicant Information

Applicant Company Name: EASE LLC

Contact Person: Jonathan Roberson

Mailing Address: 5877 Pine Ave., Suite 210, Chino Hills, CA 91709

Telephone: (909) 606-7622

Email: jon@EASECo.com

Title: Principal Engineer



**DEPARTMENT OF HEALTH CARE ACCESS AND INFORMATION
OFFICE OF STATEWIDE HOSPITAL PLANNING AND DEVELOPMENT**

California Licensed Structural Engineer Responsible for the Engineering and Test Report(s)

Company Name: EASE LLC

Name: Jonathan Roberson California License Number: S4197

Mailing Address: 5877 Pine Ave., Suite 210, Chino Hills, CA 91709

Telephone: (951) 295-1892 Email: jon@EASECo.com

Certification Method

- GR-63-Core
- ICC-ES AC156
- IEEE 344
- IEEE 693
- NEBS 3
- Other (Please Specify): _____

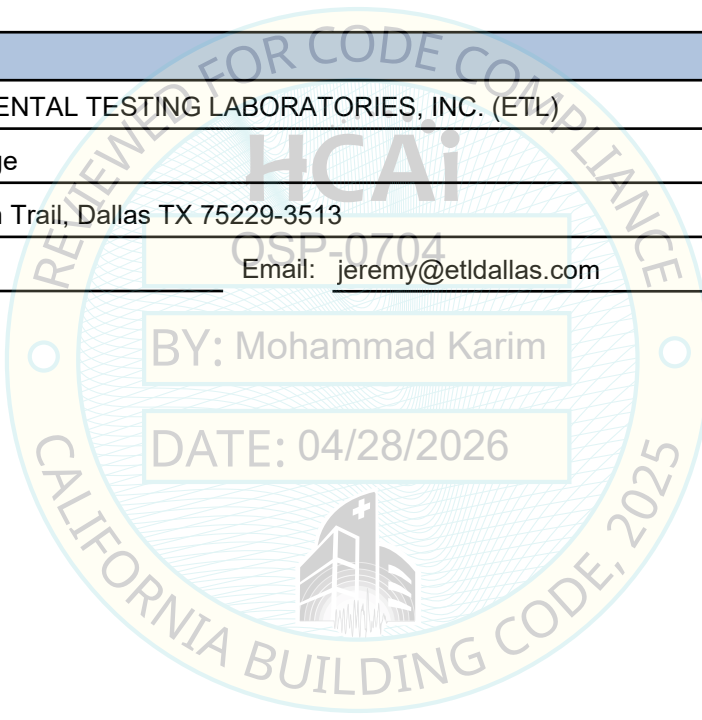
Testing Laboratory

Company Name: ENVIRONMENTAL TESTING LABORATORIES, INC. (ETL)

Contact Person: Jeremy Lange

Mailing Address: 11034 Indian Trail, Dallas TX 75229-3513

Telephone: (972) 247-9657 Email: jeremy@etldallas.com





**DEPARTMENT OF HEALTH CARE ACCESS AND INFORMATION
OFFICE OF STATEWIDE HOSPITAL PLANNING AND DEVELOPMENT**

Seismic Parameters

Certified Response Spectral Acceleration Factors:(Fp/Wp)

Horizontal	(A Flx-H), g=	<u>3.20</u>	(A Rig-H), g=	<u>2.15</u>
Vertical	(A Flx-V), g=	<u>1.68</u>	(A Rig-V), g=	<u>0.68</u>

SDS (Design spectral response acceleration at short period, g) = 2.00 @z/h=1 and 2.50@z/h=0

Hf (Force amplification height factor) = 1 @ z/h = 0; 3.5 @ z/h = 1

Ru (Structure ductility reduction factor) = 1 @ z/h = 0; 1.3 @ z/h = 1

Ip (Importance factor) = 1.5

z/h (Height ratio factor) = 0 and 1

HCAI Approval (For Office Use Only) - Approval Expires on 04/28/2032

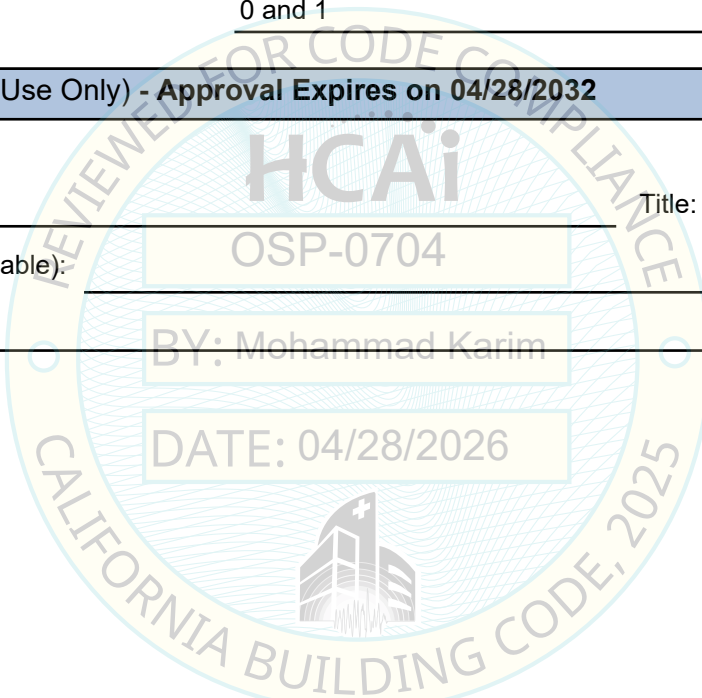
Date: 4/28/2026

Name: Mohammad Karim Title: Supervisor, Health Facilities

Condition of Approval (if applicable): OSP-0704

BY: Mohammad Karim

DATE: 04/28/2026



ATTACHMENT 1: CERTIFIED COMPONENTS

ATTACHMENT PAGE | 1 OF 3

TABLE 1:

BUILDING CODE: 2025 CBC

Manufacturer		OTIS Elevator Company				Seismic Parameters		
Product Line		GLOBAL CONTROL SYSTEM (GCS)				S _{DS} = 2.0g at z/h = 1 R _μ = 1.3; H _f = 3.5		
Product Type		Elevator Components				S _{DS} = 2.5g at z/h = 0 R _μ = 1.0; H _f = 1.0		
COMPONENT	MODEL NO.	DIMENSIONS (IN.)			APPROX. WT. (LB.)	MOUNT	BASIS [1]	
		W	D	H				
GCS Controller Assembly (480 VAC) w/ Elevator Controller, Brake, 60A Drive & Transformer Box (Empty)	ABA21310AD4 [3][4]	40.9	13.6	69.5	544	Rigid Base	UUT-2101-3 UUT-2502-3	
GCS Controller Assembly (208 VAC) w/ Elevator Controller, Brake, 60A Drive & Transformer Box (Empty)	ABA21310AD32 [3][4]	40.9	13.6	69.5	589	Rigid Base	INT	
GCS Controller Assembly (480 VAC) w/ Elevator Controller, Brake, 60A Drive & Transformer Box (26.2kVA; 208 VAC to 480 VAC).	ABA21310AD10 [3][4]	40.9	13.6	69.5	654	Rigid Base	UUT-2101-4	
GCS Controller Assembly (208 VAC) w/ Elevator Controller, Brake, 60A Drive & Transformer Box (26.2kVA; 208 VAC to 480 VAC).	ABA21310AD [3][4]	40.9	13.6	69.5	699	Rigid Base	UUT-2502-1	
GCS Controller Assembly (480 VAC) w/ Elevator Controller, Brake, & Transformer Box (Empty) [5]	ABA21310AD5 [3][4]	40.9	13.6	69.5	403	Rigid Base	UUT-2101-5 UUT-2502-2	
GCS 412A Drive 120A	AAA21305DD1	20.9	9.5	53.6	269	Rigid Base	UUT-2101-6 UUT-2502-4	
Mount	RIGID BASE: free-standing, base-mounted tower configuration with the component rigidly attached to a supporting structure and no lateral support above the base.							
Notes	<ol style="list-style-type: none"> BASIS: <ul style="list-style-type: none"> UUT#: Indicates that a test specimen matching these characteristics was tested. See Attachment 2. INT (Interpolated or Extrapolated): indicates a model not specifically tested, by which seismic qualification was established through evaluation of testing of similar models in the product line Special Seismic Certification is limited to subcomponents listed in Table 2 and those tested subcomponents meeting exceptions of CBC §1705A.14.3.1 Configurations determined by subcomponents listed in Table 2. Requires use of seismic kits: P/N AEB21305BN439 and P/N: AFA21305BL406. For use with separate GCS 412A Drive 120A. 							

ATTACHMENT 1: CERTIFIED COMPONENTS

TABLE 2: Seismic Certified Subcomponents

SUBCOMPONENT	MANUFACTURER	PART NO.	DESCRIPTION	BASIS
CONTROLLER ASSEMBLY	OTIS	AEB21305BN	Elevator Controller Assembly	UUT-2101-3, UUT-2101-4 UUT-2101-5, UUT-2502-1, UUT-2502-2, UUT-2502-3
Power Supplies				
24VDC Switching Power Supply	Siemens	AAA621AT14	Adjustable 24VDC Switching Power Supply; 240W; 85V to 264V Input; Enclosed Frame	UUT-2101-3, UUT-2101-4 UUT-2101-5
24VDC Switching Power Supply	Meanwell	AAA621AT49	Adjustable 24VDC Switching Power Supply; 120W; 85V to 264V Input; Enclosed Frame	UUT-2502-1
24VDC Switching Power Supply	Meanwell	AAA621AT48	Adjustable 24VDC Switching Power Supply; 240W; 90V to 264V Input; Enclosed Frame	UUT-2502-2, UUT-2502-3
12VDC Switching Power Supply	Cosel	AAA621AN22	12VDC Switching Power Supply; 15.6W; 85V to 264V Input; Enclosed Frame	UUT-2101-4 , UUT-2101-5
Batteries				
12V Battery (7AH)	Leoch	AAA718E14	12V; 7AH; Sealed Lead Acid Battery	UUT-2101-3, UUT-2101-4 UUT-2101-5
12V Battery (5AH)	Vision	AAA718E25	12V; 5AH	UUT-2502-1, UUT-2502-2, UUT-2502-3
12V Battery (5AH)	Powersonic	AAA718E25	12V; 4.5AH; Sealed Lead Acid Battery	UUT-1, UUT-2, UUT-3
12V Battery (4AH)	Leoch	AAA718E3	12V; 4AH; Sealed Lead Acid Battery	UUT-2101-3, UUT-2101-4 UUT-2101-5
BRAKE BOX ASSEMBLY	OTIS	AFA21305BL	Brake Assembly	UUT-2101-3, UUT-2101-4 UUT-2101-5, UUT-2502-1, UUT-2502-2, UUT-2502-3
Power Distribution Transformers				
480VAC Transformer Rating: 1.0kVA	Grand Transformer	AAA225MV1	Transformer Primary: 440-480VAC; 50/60Hz; 3Ø; Rating: 1.0kVA	UUT-2101-3
480VAC Transformer Rating: 1.0kVA	Pacific Transformer	AAA225MV1	Primary: 440-480VAC; 50/60Hz; 3Ø; Rating: 1.0kVA; Control system power	UUT-2502-3
480VAC Transformer Rating: 1.65kVA	Grand Transformer	AAA225MV5	Transformer Primary: 440-480VAC; 50/60Hz; 3Ø; Rating: 1.65kVA	UUT-2101-4, UUT-2101-5
480VAC Transformer Rating: 1.65kVA	Pacific Transformer	AAA225MV5	Primary: 440-480VAC; 50/60Hz; 3Ø; Rating: 1.65kVA; Control system power	UUT-2502-2
208VAC Transformer Rating: 1.0kVA	Pacific Transformer	AAA225MV2	Primary: 208-240VAC; 50/60Hz; 3Ø; Rating: 1.0kVA; Control system power	INT

ATTACHMENT 1: CERTIFIED COMPONENTS

TABLE 2: Seismic Certified Subcomponents

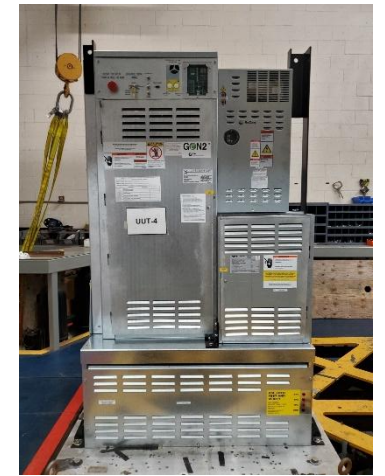
SUBCOMPONENT	MANUFACTURER	PART NO.	DESCRIPTION	BASIS
208VAC Transformer Rating: 1.65kVA	Pacific Transformer	AAA225MV6	Primary: 208-240VAC; 50/60Hz; 3Ø; Rating: 1.65kVA; Control system power	UUT-2502-1
TRANSFORMER BOX ASSEMBLIES / UPSTAND BOXES				
TRANSFORMER BOX ASSEMBLY	Otis	AEA21305BR1	Empty transformer box upstand (Upstand Box)	UUT-2101-3, UUT-2101-5
TRANSFORMER BOX ASSEMBLY	Otis	AAA374AFL3	Empty transformer box upstand (Upstand Box)	UUT-2502-2, UUT-2502-3
TRANSFORMER BOX ASSEMBLY	Otis	AEA21305BR4	Transformer Box Assembly w/ Transformer	UUT-2101-4, UUT-2502-1
Building Power Transformer (208V to 480V)	Grand Transformer	ABA225LY3	Transformer: Primary 208-240VAC, Secondary 480VAC, Power: 26.2kVA transformer	UUT-2101-4
Building Power Transformer (208V to 480V)	Pacific Transformer	ABA225LY3	Transformer: Primary 208-240VAC, Secondary 480VAC, Power: 26.2kVA transformer	UUT-2502-1
Fuse (70A, 600V)	Mersen	AAA375BZ68	70 Amp; 600V; Time Delay Fuse	UUT-2101-4
Fuse(60A, 600V)	LittleFuse	AAA375BZ67	60 Amp; 600V; Time Delay Fuse	UUT-2502-1
Fuse(60A, 600V)	Mersen	AAA375BZ67	60 Amp; 600V; Time Delay Fuse	UUT-2502-1
DRIVE ASSEMBLIES				
60A R3 REGEN DRIVE (480V)	Otis	KCA21310ABR5	Drive Assembly Volt: 480Vac; Output Current: 32A rms	UUT-2101-3 UUT-2101-4 UUT-2502-3
60A R3 REGEN DRIVE (208V)	Otis	KCA21310ABR6	Drive Assembly Volt: 208Vac; Output Current: 32A rms	UUT-2502-1
GCS 412A Drive 120A (480V)	Otis	GDA21310EC2	Drive Assembly Volt: 480Vac; Output Current: 60A rms with floor mount kit	UUT-2101-6
GCS 412A Drive 120A (480V)	Otis	GEA21310EC2	Drive Assembly Volt: 480Vac; Output Current: 60A rms with floor mount kit	UUT-2502-4
FLOOR MOUNT KIT	Otis	ABA471LJ1	floor mount kit for 120A Drive assembly	UUT-2101-6 UUT-2502-4
Notes	1. BASIS:			
	<ul style="list-style-type: none"> • UUT#: Indicates that a test specimen matching these characteristics was tested as part of this testing program. 			
	2. Certification in this table is limited to the listed subcomponents when installed as part of a complete assembly of the components defined in Table 1.			

ATTACHMENT 2: TEST SPECIMEN SUMMARY

UUT-2101-3 GCS Controller Assembly 480VAC 60A								
<i>Manufacturer:</i> OTIS Elevator Company								
<i>Identification:</i> Model No.: ABA21310AD4 Serial No.: 4920FSP825J1								
<i>Description:</i> GCS Controller Assembly (480 VAC) w/ Elevator Controller, Brake, 60A Drive & Transformer Box (Empty)								
Includes the following sub-components:								
Item	Manufacturer			Part No.				
60A R3 REGEN DRIVE (480V) (S/N: CGJABR0520350027)	Otis			KCA21310ABR5				
BRAKE BOX ASSEMBLY	Otis			AFA21305BL				
Transformer Primary: 480VAC; 50/60Hz; 3Ø; Rating: 1.0kVA	Grand Transformer			AAA225MV1				
CONTROLLER ASSEMBLY	Otis			AEB21305BN				
Adjustable 24VDC Switching Power Supply	Siemens			AAA621AT14				
12V; 7AH; Sealed Lead Acid Battery (Qty 4)	Leoch			AAA718E14				
12V; 4AH; Sealed Lead Acid Battery	Leoch			AAA718E3				
TRANSFORMER BOX ASSEMBLY (Empty Box Only)	Otis			AEA21305BR1				
SEISMIC KITS:	Otis			AEB21305BN439 & AFA21305BL406				
<i>Mounting:</i> Rigid Base (Floor) mounted using (4) – 1/2" dia. SAE J429 Grade 5 Hex Head Bolts w/ Standard Washers through (2) mounting brackets P/N: AAA316HJR3								
Dimensions [in]				Lowest Resonant Frequency [Hz]				
Width	Depth	Height	Weight [lb]	Front - Axis	Side - Axis	Vert - Axis		
40.9	13.6	69.5	543.5	11.48	16.36	>50		
ICC-ES AC156 (24) 2nd Edition Test Parameters								Building Code: 2025 CBC
S _{DS} (g)	z/h	R _μ	H _f	I _p	A _{FLEX-H} (g)	A _{RIG-H} (g)	A _{FLEX-V} (g)	A _{RIG-V} (g)
2.00	1	1.3	3.5	1.5	3.20	2.40	1.68	0.68
2.50	0	1.0	1.0					
Unit satisfied AC156 requirements for structural integrity and manufacturer requirements for functionality after AC156 test.								



UUT-2101-4 GCS Controller Assembly 208VAC 60A								
<i>Manufacturer:</i> OTIS Elevator Company								
<i>Identification:</i> Model No.: ABA21310AD10 Serial No.: 4920FSP825J2								
<i>Description:</i> GCS Controller Assembly (480 VAC) w/ Elevator Controller, Brake, 60A Drive & Transformer Box (26.2kVA; 208 VAC to 480 VAC).								
Includes the following sub-components:								
Item	Manufacturer			Part No.				
60A R3 REGEN DRIVE (480V) (S/N: CGJABR0520350024)	Otis			KCA21310ABR5				
BRAKE BOX ASSEMBLY	Otis			AFA21305BL				
Transformer Primary: 480VAC; 50/60Hz; 3Ø; Rating: 1.65kVA	Grand Transformer			AAA225MV5				
CONTROLLER ASSEMBLY	Otis			AEB21305BN				
Adjustable 24VDC Switching Power Supply	Siemens			AAA621AT14				
12VDC Switching Power Supply	Cosel			AAA621AN22				
12V; 7AH; Sealed Lead Acid Battery (Qty 4)	Leoch			AAA718E14				
12V; 4AH; Sealed Lead Acid Battery	Leoch			AAA718E3				
TRANSFORMER BOX ASSEMBLY	Otis			AEA21305BR4				
Building Power Transformer (primary 208A to secondary 480 V)	Grand Transformer			ABA225LY3				
Fuse (70A, 600V)	Mersen			AAA375BZ68				
Seismic Kits:	Otis			AEB21305BN439 & AFA21305BL406				
<i>Mounting:</i> Rigid Base (Floor) mounted with (4) 1/2" dia. SAE J429 GR 5 Hex Bolts w/ Washers through (2) mounting brackets P/N: AAA316HJR3								
Dimensions [in]				Lowest Resonant Frequency [Hz]				
Width	Depth	Height	Weight [lb]	Front - Axis	Side - Axis	Vert - Axis		
40.9	13.6	69.5	654	10.84	20.77	12.63		
ICC-ES AC156 (24) 2nd Edition Test Parameters								Building Code: 2025 CBC
S _{DS} (g)	z/h	R _μ	H _f	I _p	A _{FLEX-H} (g)	A _{RIG-H} (g)	A _{FLEX-V} (g)	A _{RIG-V} (g)
2.00	1	1.3	3.5	1.5	3.20	2.40	1.68	0.68
2.50	0	1.0	1.0					
Unit satisfied AC156 requirements for structural integrity and manufacturer requirements for functionality after AC156 test.								



ATTACHMENT 2: TEST SPECIMEN SUMMARY

UUT-2101-5 GCS Controller Assembly 480VAC 120A								
<i>Manufacturer:</i> OTIS Elevator Company								
<i>Identification:</i> Model No.: ABA21310AD5 Serial No.: 4920FSP825J3								
<i>Description:</i> GCS Controller Assembly (480 VAC) w/ Elevator Controller, Brake, & Transformer Box (Empty)								
Includes the following sub-components:								
Item	Manufacturer		Part No.					
BRAKE BOX ASSEMBLY	Otis		AFA21305BL					
Transformer Primary: 480VAC; 50/60Hz; 3Ø; Rating: 1.65kVA	Grand Transformer		AAA225MV5					
CONTROLLER ASSEMBLY	Otis		AEB21305BN					
Adjustable 24VDC Switching Power Supply	Siemens		AAA621AT14					
12VDC Switching Power Supply	Cosel		AAA621AN22					
12V; 7AH; Sealed Lead Acid Battery (Qty 4)	Leoch		AAA718E14					
12V; 4AH; Sealed Lead Acid Battery	Leoch		AAA718E3					
TRANSFORMER BOX ASSEMBLY (Empty Box Only)	Otis		AEA21305BR1					
120 AMP DRIVE (480V) (Mounted separately as UUT-2101-6)	Otis		GDA21310EC2					
<i>Seismic Kits:</i>			Otis AEB21305BN439 & AFA21305BL406					
<i>Mounting:</i> Rigid Base (Floor) mounted using (4) – 1/2" dia. SAE J429 Grade 5 Hex Head Bolts w/ Standard Washers through (2) mounting brackets P/N: AAA316HJR3								
Dimensions [in]				Lowest Resonant Frequency [Hz]				
Width	Depth	Height	Weight [lb]	Front - Axis	Side - Axis	Vert - Axis		
40.9	13.6	69.5	376.5	19.54	14.52	>50		
ICC-ES AC156 (24) 2nd Edition Test Parameters								Building Code: 2025 CBC
S _{DS} (g)	z/h	R _μ	H _r	I _p	A _{FLX-H} (g)	A _{RI-G} (g)	A _{FLX-V} (g)	A _{RI-G} (g)
2.00	1	1.3	3.5	1.5	3.20	2.40	1.68	0.68
2.50	0	1.0	1.0					
Unit satisfied AC156 requirements for structural integrity and manufacturer requirements for functionality after AC156 test.								



UUT-2101-6 GCS 412A Drive 120A								
<i>Manufacturer:</i> OTIS Elevator Company								
<i>Identification:</i> Model No.: AAA21305DD1 Serial No.: CGJEC-0220250027								
<i>Description:</i> GCS 412A Drive 120A. Component of OTIS GCS Elevator Controllers								
Includes the following sub-components:								
Item	Manufacturer		Part No.					
DRIVE BOX Model: OVFR02A-412 (480VAC)	Otis		GDA21310EC2					
FLOOR MOUNT KIT	Otis		ABA471LJ1					
This unit is a separately mounted 120A drive that is part of the GCS controller assembly of UUT-2101-5.								
<i>Mounting:</i> Rigid Base (Floor) mounted using (4) – 1/2" dia. SAE J429 Grade 5 Hex Head Bolts w/ Standard Washers through floor mount P/N: ABA471LJ1								
Dimensions [in]				Lowest Resonant Frequency [Hz]				
Width	Depth	Height	Weight [lb]	Front - Axis	Side - Axis	Vert - Axis		
20.9	9.5	53.6	269	14.36	10.03	12.73		
ICC-ES AC156 (24) 2nd Edition Test Parameters								Building Code: 2025 CBC
S _{DS} (g)	z/h	R _μ	H _r	I _p	A _{FLX-H} (g)	A _{RI-G} (g)	A _{FLX-V} (g)	A _{RI-G} (g)
2.00	1	1.3	3.5	1.5	3.20	2.40	1.68	0.68
2.50	0	1.0	1.0					
Unit satisfied AC156 requirements for structural integrity and manufacturer requirements for functionality after AC156 test.								



ATTACHMENT 2: TEST SPECIMEN SUMMARY

UUT-2502-1 GCS Controller Assembly (208 VAC) 60A w/ Transformer								
<i>Manufacturer:</i> OTIS Elevator Company								
<i>Identification:</i> Model No.: ABA21310AD* Serial No.: 3625FPM100J9								
<i>Description:</i> Otis GCS Elevator Controller Assembly (Config No. PM100J9).								
*This is a custom configured unit combining Model No. ABA21310AD32, with a 26.2 KVA 208-to-480VAC transformer. Includes the following sub-components:								
Item				Manufacturer	Part No.			
60A R3 REGEN DRIVE (208V)				Otis	KCA21310ABR6			
BRAKE BOX ASSEMBLY				Otis	AFA21305BL			
Transformer Primary: 208VAC; 50/60Hz; 3Ø; Rating: 1.65kVA				Pacific Transformer	AAA225MV6			
CONTROLLER ASSEMBLY					AEB21305BN			
Adjustable 24VDC Switching Power Supply 120W				Meanwell	AAA621AT49			
12V; 5AH; Sealed Lead Acid Battery (Qty 4)				Vision	AAA718E25			
12V; 4.5AH; Sealed Lead Acid Battery				Powersonic	AAA718E25			
TRANSFORMER BOX ASSEMBLY				Otis	AEA21305BR4			
Building power xfmr (26.2 KVA prim. 208-240V, sec 480V)				Pacific Transformer	ABA225LY3			
Fuse (60A, 600V)				Mersen	AAA375BZ67			
Fuse (60A, 600V)				LittleFuse	AAA375BZ67			
Seismic Kits:	Otis			AEB21305BN439 & AFA21305BL406				
<i>Mounting:</i> Rigid Base (Floor) mounted using (4) – 1/2" dia. SAE J429 Grade 5 bolts w/ std. washers through (2) mounting brackets.								
Dimensions [in]				Lowest Resonant Frequency [Hz]				
Width	Depth	Height	Weight [lb]	Front - Axis	Side - Axis	Vert - Axis		
40.9	13.6	69.5	698.5	9.69	21.63	>50		
ICC-ES AC156 (24) 2nd Edition Test Parameters								Building Code: 2025 CBC
S _{DS} (g)	z/h	R _μ	H _f	I _p	A _{FLX-H} (g)	A _{RIG-H} (g)	A _{FLX-V} (g)	A _{RIG-V} (g)
2.0	1	1.3	3.5	1.5	3.20	2.40	1.74	0.70
2.6	0	1	1					
Unit satisfied AC156 requirements for structural integrity and manufacturer requirements for functionality after AC156 test.								



UUT-2502-2 GCS Controller Assembly (480 VAC) for use with 120A Drive w/ Transformer Box (Empty)								
<i>Manufacturer:</i> OTIS Elevator Company								
<i>Identification:</i> Model No.: ABA21310AD5 Serial No.: 3625FPM100J9C								
<i>Description:</i> Otis GCS Elevator Controller Assembly (Config No. PM100J9C).								
Includes the following sub-components:								
Item				Manufacturer	Part No.			
BRAKE BOX ASSEMBLY				Otis	AFA21305BL			
Transformer Primary: 480VAC; 50/60Hz; 3Ø; Rating: 1.65kVA				Pacific Transformer	AAA225MV5			
CONTROLLER ASSEMBLY				Otis	AEB21305BN			
Adjustable 24VDC Switching Power Supply 240W				Meanwell	AAA621AT48			
12V; 5AH;				Vision	AAA718E25			
12V; 4.5AH; Sealed Lead Acid Battery				Powersonic	AAA718E25			
TRANSFORMER BOX ASSEMBLY (Empty Box Only)				Otis	AAA374AFL3			
120 AMP DRIVE (480V) (Mounted separately as UUT-2502-4)				Otis	GEA21310EC2			
Seismic Kits:	Otis			AEB21305BN439 & AFA21305BL406				
<i>Mounting:</i> Rigid Base (Floor) mounted using (4) – 1/2" dia. SAE J429 Grade 5 bolts w/ std. washers through (2) mounting brackets								
Dimensions [in]				Lowest Resonant Frequency [Hz]				
Width	Depth	Height	Weight [lb]	Front - Axis	Side - Axis	Vert - Axis		
40.9	13.6	69.5	403	11.91	23.03	14.88		
ICC-ES AC156 (24) 2nd Edition Test Parameters								Building Code: 2025 CBC
S _{DS} (g)	z/h	R _μ	H _f	I _p	A _{FLX-H} (g)	A _{RIG-H} (g)	A _{FLX-V} (g)	A _{RIG-V} (g)
2.0	1	1.3	3.5	1.5	3.20	2.40	1.74	0.70
2.6	0	1	1					
Unit satisfied AC156 requirements for structural integrity and manufacturer requirements for functionality after AC156 test.								



ATTACHMENT 2: TEST SPECIMEN SUMMARY

UUT-2502-3 GCS Controller Assembly (480 VAC) 60A Drive w/ Transformer Box (Empty)								
<i>Manufacturer:</i> OTIS Elevator Company								
<i>Identification:</i> Model No.: ABA21310AD4 Serial No.: 3625FPM100J9A								
<i>Description:</i> Otis GCS Elevator Controller Assembly (Configuration No. PM100J9A).								
Includes the following sub-components:								
Description			Manufacturer		Part No.			
60A R3 REGEN DRIVE (480V)			Otis		KCA21310ABR5			
BRAKE BOX ASSEMBLY			Otis		AFA21305BL			
Transformer Primary: 480VAC; 50/60Hz; 3Ø; Rating: 1.0kVA			Pacific Transformer		AAA225MV1			
CONTROLLER ASSEMBLY			Otis		AEB21305BN			
Adjustable 24VDC Switching Power Supply 240W			Meanwell		AAA621AT48			
12V; 5AH;			Vision		AAA718E25			
12V; 4.5AH; Sealed Lead Acid Battery			Powersonic		AAA718E25			
TRANSFORMER BOX ASSEMBLY (Empty Box Only)			Otis		AAA374AFL3			
Seismic Kits:			Otis		AEB21305BN439 & AFA21305BL406			
<i>Mounting:</i> Rigid Base (Floor) mounted using (4) – 1/2" dia. SAE J429 Grade 5 bolts w/ std. washers through (2) mounting brackets.								
Dimensions [in]				Lowest Resonant Frequency [Hz]				
Width	Depth	Height	Weight [lb]	Front - Axis	Side - Axis	Vert - Axis		
40.9	13.6	69.5	468	9.53	21.05	>50		
ICC-ES AC156 (24) 2nd Edition Test Parameters								Building Code: 2025 CBC
S _{DS} (g)	z/h	R _μ	H _f	I _p	A _{FLX-H} (g)	A _{RIg-H} (g)	A _{FLX-V} (g)	A _{RIg-V} (g)
2.0	1	1.3	3.5	1.5	3.20	2.40	1.74	0.70
2.6	0	1	1					
Unit satisfied AC156 requirements for structural integrity and manufacturer requirements for functionality after AC156 test.								



UUT-2502-4 GCS 412A Drive 120A (480 VAC)								
<i>Manufacturer:</i> OTIS Elevator Company								
<i>Identification:</i> Model: No. AAA21305DD1								
<i>Description:</i> GCS 412A Drive 120A (Config No. PM100J9M). Component of Otis GCS Elevator Controller Assembly								
Includes the following sub-components:								
Description			Manufacturer		Part No.			
DRIVE BOX Model: OVFR02A-412 (480VAC)			Otis		GEA21310EC2			
FLOOR MOUNT KIT			Otis		ABA471LJ1			
This unit is a separately mounted 120A drive that is part of the GCS controller assembly of UUT-2502-2.								
<i>Mounting:</i> Rigid Base (Floor) mounted using (4) – 1/2" dia. SAE J429 Grade 5 Hex Head Bolts w/ Standard Washers through floor mount P/N: ABA471LJ								
Dimensions [in]				Lowest Resonant Frequency [Hz]				
Width	Depth	Height	Weight [lb]	Front - Axis	Side - Axis	Vert - Axis		
20.9	9.5	53.6	266.5	7.74	7.5	25.65		
ICC-ES AC156 (24) 2nd Edition Test Parameters								Building Code: 2025 CBC
S _{DS} (g)	z/h	R _μ	H _f	I _p	A _{FLX-H} (g)	A _{RIg-H} (g)	A _{FLX-V} (g)	A _{RIg-V} (g)
2.0	1	1.3	3.5	1.5	3.20	2.40	1.74	0.70
2.6	0	1	1					
Unit satisfied AC156 requirements for structural integrity and manufacturer requirements for functionality after AC156 test.								



ATTACHMENT 3: TEST SUMMARY

ATTACHMENT PAGE | 1 OF 1

UUT	REPORT NUMBER	TEST DATE	TEST FACILITY	REPORT UUT
2101-3	SQ10210101	Feb 8-12, 2021	Environmental Testing Laboratory, Inc.	3
2101-4				4
2101-5				5
2101-6				6
2502-1	SQ10250201	Oct 13-15, 2025	Environmental Testing Laboratory, Inc.	1
2502-2				2
2502-3				3
2502-4				4

