



**OFFICE OF STATEWIDE HEALTH PLANNING AND DEVELOPMENT
FACILITIES DEVELOPMENT DIVISION**

**APPLICATION FOR OSHPD SPECIAL SEISMIC
CERTIFICATION PREAPPROVAL (OSP)**

OFFICE USE ONLY

APPLICATION #: OSP-0707

OSHPD Special Seismic Certification Preapproval (OSP)

Type: New Renewal

Manufacturer Information

Manufacturer: Schneider Electric, Monterrey Design Center

Manufacturer's Technical Representative: José Muñiz

Mailing Address: Via de la Innovacion 408, Parque PIIT, Apodaca, NL 66628

Telephone: +52 812 326-9328

Email: Jose.Muniz@se.com

Product Information

Product Name: Panelboards

Product Type: Power Distribution Units

Product Model Number: Galaxy Remote Power Panel (GRPP)

General Description: _____

Mounting Description: Rigid, Floor/Wall Mounted or Floor/Back-to-Back Mounted

Tested Seismic Enhancements: None

BY: Mohammad Karim

DATE: 07/23/2021

Applicant Information

Applicant Company Name: Structural Integrity Associates, Inc.

Contact Person: Galen Reid

Mailing Address: 233 SW Wilson Ave Suite 101, Bend, OR 97702

Telephone: (541) 604-7225

Email: greid@structint.com

Title: Manager, TRU Compliance





**OFFICE OF STATEWIDE HEALTH PLANNING AND DEVELOPMENT
FACILITIES DEVELOPMENT DIVISION**

California Licensed Structural Engineer Responsible for the Engineering and Test Report(s)

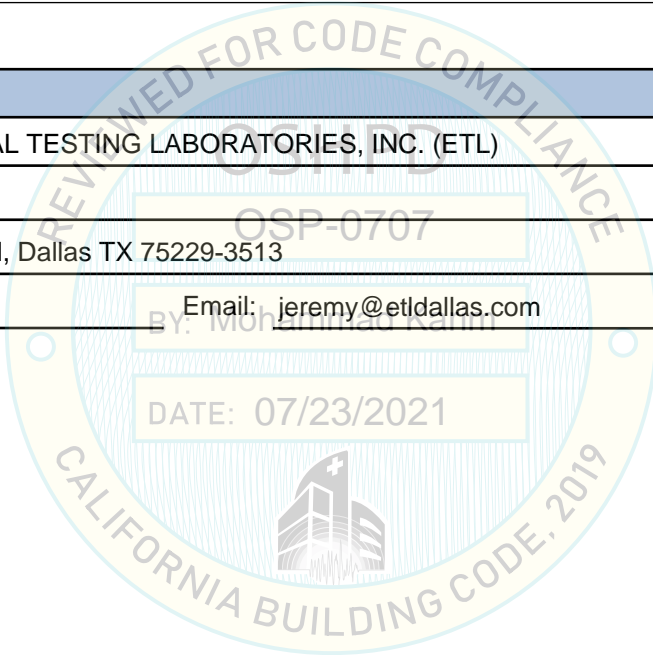
Company Name: STRUCTURAL INTEGRITY ASSOCIATES, INC.
Name: Andrew Coughlin California License Number: S6082
Mailing Address: 5215 Hellyer Ave, Suite 101, San Jose, CA 95138-1025
Telephone: (415) 635-8461 Email: acoughlin@structint.com

Certification Method

GR-63-Core ICC-ES AC156 IEEE 344 IEEE 693 NEBS 3
 Other (Please Specify): _____

Testing Laboratory

Company Name: ENVIRONMENTAL TESTING LABORATORIES, INC. (ETL)
Contact Person: Jeremy Lange
Mailing Address: 11034 Indian Trail, Dallas TX 75229-3513
Telephone: (972) 247-9657 Email: jeremy@etldallas.com





**OFFICE OF STATEWIDE HEALTH PLANNING AND DEVELOPMENT
FACILITIES DEVELOPMENT DIVISION**

Seismic Parameters

Design Basis of Equipment or Components (F_p/W_p) = 1.23

SDS (Design spectral response acceleration at short period, g) = 1.64

a_p (Amplification factor) = 2.5

R_p (Response modification factor) = 6.0

Ω_0 (System overstrength factor) = 2.0

I_p (Importance factor) = 1.5

z/h (Height ratio factor) = 1

Natural frequencies (Hz) = See Attachment

Overall dimensions and weight = See Attachment

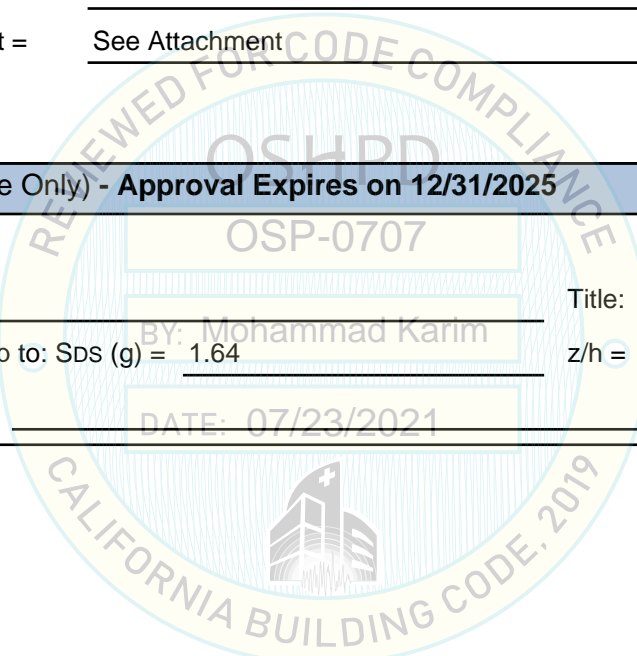
OSHPD Approval (For Office Use Only) - Approval Expires on 12/31/2025

Date: 7/23/2021

Name: Mohammad Karim Title: Supervisor, Health Facilities

Special Seismic Certification Valid Up to: SDS (g) = 1.64 z/h = 1

Condition of Approval (if applicable): DATE: 07/23/2021



SPECIAL SEISMIC CERTIFICATION CERTIFIED SUBCOMPONENT MATRIX

2000771-CR-001-R0



Manufacturer:	Schneider Electric	Table Description:	Circuit Breakers	TABLE 3
Model Line:	Galaxy Remote Power Panel (GRPP)			

Building Code: CBC 2019 **Seismic Certification Limits:** $S_{DS} = 1.64 g$ $z/h = 1.0$ $I_p = 1.5$

Component Type	Manufacturer	Model	Description	Notes	UUT	
Main Circuit Breakers	Schneider Electric (Square D)	JGF36250U33X	J-Frame, 3Poles, 600V, 250A, 80%		1, 3	
		JGF36250CU33X	J-Frame, 3Poles, 600V, 250A, 100%		Interp.	
		LGF36400U33X	L-Frame, 3Poles, 600V, 400A, 80%		Interp.	
		LGF36400CU33X	L-Frame, 3Poles, 600V, 400A, 100%		2, 4	
Branch Breakers		QOB110	10A, 1 pole			1, 3
		...	1 pole/ 2 pole/ 3 pole			Interp.
		QOB3100	100A, 3 pole			Interp.
		QO115VH	15A, 1 pole			Interp.
		...	1 pole/ 2 pole/ 3 pole			Interp.
		QOB3100VH	100A, 3 pole			1, 3
		EDB14015	15A, 1 pole			2, 4
		...	1 pole/ 2 pole/ 3 pole			Interp.
EDB34100	100A, 3 pole			2, 4		

UNIT UNDER TEST (UUT) SUMMARY SHEET

2000771-CR-001-R0



Manufacturer: Schneider Electric	UUT 1
Model Line: Galaxy Remote Power Panel (GRPP)	
Model Number: GRPPNQ84 Serial Number: N/A	

Product Construction Summary:
NEMA Type 1 painted carbon steel enclosure.

Options/Subcomponent Summary:
NQ Panelboard: NQ, 3Phase, 84Poles, 240V, 400A - NQM384L4CS, **Main Circuit Breakers:** J-Frame, 3Poles, 600V, 250A, 80% - JGF36250U33X, **Branch Breakers:** 10A, 1 pole - Q0B110, 100A, 3 pole - QOB3100VH, **Surge Suppressor (TVSS):** HWA, 208Y/120V, 3Ph, 100kA - TVS2HWA10X, **HMI:** 7-in DISPLAY - 0N-9582RPP, **Power Supply:** PCB ASSY RPP POWER SUPPLY - 0P9460AA, **Hostboard PCBA:** PCB ASSY RPP HOST BOARD - 0P9461AA, **BCPM:** Power meter, 4x21-100A, spacing 3/4 - BCPMA084S, **CT:** CT, Split-Core, 300A:0.333VAC - LVCT00302S; All products are Square D

UUT Properties						
Weight (lb)	Dimension (in)			Lowest Natural Frequency (Hz)		
	Depth	Width	Height	Front-Back	Side-Side	Vertical
329.0	12.0	24.0	84.0	9.43	14.34	9.00

UUT Highest Passed Seismic Run Information								
Building Code	Test Criteria	S _{DS} (g)	z/h	I _p	A _{FLX-H} (g)	A _{RIG-H} (g)	A _{FLX-V} (g)	A _{RIG-V} (g)
CBC 2019	ICC-ES AC156 (2018)	1.83	1.0	1.5	2.93	2.20	1.22	0.49

Test Mounting Details:



Base & Wall Mounted Rigid: Wall - (4) 3/8" Grade 5 bolts, Base - (4) 1/2" Grade 5 bolts.
 Unit maintained structural integrity and remained functional per manufacturer requirement after shake table test.
 Contents were included in testing per operating conditions.

UNIT UNDER TEST (UUT) SUMMARY SHEET



2000771-CR-001-R0

Manufacturer: Schneider Electric	UUT 2
Model Line: Galaxy Remote Power Panel (GRPP)	
Model Number: GRPPNF89 Serial Number: N/A	

Product Construction Summary:
NEMA Type 1 painted carbon steel enclosure.

Options/Subcomponent Summary:
NF Panelboard: NF, 3Phase, 42Poles, 480V, 400A - NFOM342L4CITD, **Main Circuit Breakers:** L-Frame, 3Poles, 600V, 400A, 100% - LGF36400CU33X, **Branch Breakers:** 15A, 1 pole - EDB14015, 100A, 3 pole - EDB34100, **HMI:** 7-in DISPLAY - 0N-9582RPP, **Power Supply:** PCB ASSY RPP POWER SUPPLY - 0P9460AA, **Hostboard PCBA:** PCB ASSY RPP HOST BOARD - 0P9461AA, **BCPM:** Power meter, 4x21-100A, spacing 1in - BCPMA184S, **CT:** CT, Split-Core, 300A:0.333VAC - LVCT00302S ; *All products are Square D*

UUT Properties

Weight (lb)	Dimension (in)			Lowest Natural Frequency (Hz)		
	Depth	Width	Height	Front-Back	Side-Side	Vertical
391.5	12.0	24.0	89.0	9.45	11.81	40.95

UUT Highest Passed Seismic Run Information

Building Code	Test Criteria	S _{DS} (g)	z/h	I _P	A _{FLX-H} (g)	A _{RIG-H} (g)	A _{FLX-V} (g)	A _{RIG-V} (g)
CBC 2019	ICC-ES AC156 (2018)	1.83	1.0	1.5	2.93	2.20	1.22	0.49

Test Mounting Details:



Base & Wall Mounted Rigid: Wall - (4) 3/8" Grade 5 bolts, Base - (4) 1/2" Grade 5 bolts.
Unit maintained structural integrity and remained functional per manufacturer requirement after shake table test.
Contents were included in testing per operating conditions.

UNIT UNDER TEST (UUT) SUMMARY SHEET

2000771-CR-001-R0



Manufacturer: Schneider Electric	UUT 3
Model Line: Galaxy Remote Power Panel (GRPP)	
Model Number: GRPPNQ84 Serial Number: N/A	


Product Construction Summary:
(2) NEMA Type 1 painted carbon steel enclosures bolted together back-to-back.

Options/Subcomponent Summary:
NQ Panelboard: NQ, 3Phase, 84Poles, 240V, 400A - NQM384L4CS, **Main Circuit Breakers:** J-Frame, 3Poles, 600V, 250A, 80% - JGF36250U33X, **Branch Breakers:** 10A, 1 pole - Q0B110, 100A, 3 pole - QOB3100VH, **Surge Suppressor (TVSS):** HWA, 277Y/480V, 3Ph, 100kA - TVS4HWA10X, **HMI:** 7-in DISPLAY - 0N-9582RPP, **Power Supply:** PCB ASSY RPP POWER SUPPLY - 0P9460AA, **Hostboard PCBA:** PCB ASSY RPP HOST BOARD - 0P9461AA, **BCPM:** Power meter, 2x21-100A, spacing 1in - BCPMA142S, CT: CT, Split-Core, 300A:0.333VAC - LVCT00302S; All products are Square D

UUT Properties						
Weight (lb)	Dimension (in)			Lowest Natural Frequency (Hz)		
	Depth	Width	Height	Front-Back	Side-Side	Vertical
695.5	24.0	24.0	84.0	10.87	10.93	9.20

UUT Highest Passed Seismic Run Information								
Building Code	Test Criteria	S _{DS} (g)	z/h	I _p	A _{FLX-H} (g)	A _{RIG-H} (g)	A _{FLX-V} (g)	A _{RIG-V} (g)
CBC 2019	ICC-ES AC156 (2018)	1.64	1.0	1.5	2.62	1.97	1.10	0.44

Test Mounting Details:



Base Mounted Rigid with (6) 1/2" Grade 5 bolts, enclosure to enclosure - (6) 1/2" Grade 5 bolts.
 Unit maintained structural integrity and remained functional per manufacturer requirement after shake table test.
 Contents were included in testing per operating conditions.

UNIT UNDER TEST (UUT) SUMMARY SHEET

2000771-CR-001-R0



Manufacturer: Schneider Electric	UUT 4
Model Line: Galaxy Remote Power Panel (GRPP)	
Model Number: GRPPNF89 Serial Number: N/A	

Product Construction Summary:
(2) NEMA Type 1 painted carbon steel enclosures bolted together back-to-back.

Options/Subcomponent Summary:
IP2X Panelboard: NQ, 3Phase, 42Poles, 240V, 400A with IP2X covers - NQM342L4CEFS, **Main Circuit Breakers:** L-Frame, 3Poles, 600V, 400A, 100% - LGF36400CU33X, **Branch Breakers:** 15A, 1 pole - EDB14015, 100A, 3 pole - EDB34100, **HMI:** 7-in DISPLAY - 0N-9582RPP, **Power Supply:** PCB ASSY RPP POWER SUPPLY - 0P9460AA, **Hostboard PCBA:** PCB ASSY RPP HOST BOARD - 0P9461AA, **BCPM:** Power meter, 4x21-100A, spacing 1in - BCPMA184S, **CT:** CT, Split-Core, 300A:0.333VAC - LVCT00302S; All products are Square D

UUT Properties						
Weight (lb)	Dimension (in)			Lowest Natural Frequency (Hz)		
	Depth	Width	Height	Front-Back	Side-Side	Vertical
710.0	24.0	24.0	89.0	9.3	14.6	>33.3

UUT Highest Passed Seismic Run Information									
Building Code	Test Criteria	S _{DS} (g)	z/h	I _p	A _{FLX-H} (g)	A _{RIG-H} (g)	A _{FLX-V} (g)	A _{RIG-V} (g)	
CBC 2019	ICC-ES AC156 (2018)	1.64	1.0	1.5	2.62	1.97	1.10	0.44	

Test Mounting Details:



Base Mounted Rigid with (6) 1/2" Grade 5 bolts, enclosure to enclosure - (6) 1/2" Grade 5 bolts.
 Unit maintained structural integrity and remained functional per manufacturer requirement after shake table test.
 Contents were included in testing per operating conditions.