



**OFFICE OF STATEWIDE HEALTH PLANNING AND DEVELOPMENT
FACILITIES DEVELOPMENT DIVISION**

**APPLICATION FOR OSHPD SPECIAL SEISMIC
CERTIFICATION PREAPPROVAL (OSP)**

OFFICE USE ONLY

APPLICATION #: OSP-0708

OSHPD Special Seismic Certification Preapproval (OSP)

Type: New Renewal

Manufacturer Information

Manufacturer: Eaton Power Distribution & Controls Assemblies Division

Manufacturer's Technical Representative: Eddie Wilkie

Mailing Address: 175 Vista Boulevard, Arden, NC 28704

Telephone: (828) 651-0707

Email: EddieWilkie@Eaton.com

Product Information

Product Name: Industrial Control Panels

Product Type: Variable Frequency Drives and Starters

Product Model Number: See Product Range Summary

General Description: Enclosed control assembly. Mohammad Karim

Mounting Description: Rigid, Floor Mounted

Tested Seismic Enhancements: None

DATE: 07/29/2021

Applicant Information

Applicant Company Name: ISAT

Contact Person: Bill Joerger

Mailing Address: 401 NW Marlborough Ave, Portland, OR 97210

Telephone: (510) 714-0216

Email: wvjoerger@sonic.net

Title: Principal Structural Engineer





**OFFICE OF STATEWIDE HEALTH PLANNING AND DEVELOPMENT
FACILITIES DEVELOPMENT DIVISION**

California Licensed Structural Engineer Responsible for the Engineering and Test Report(s)

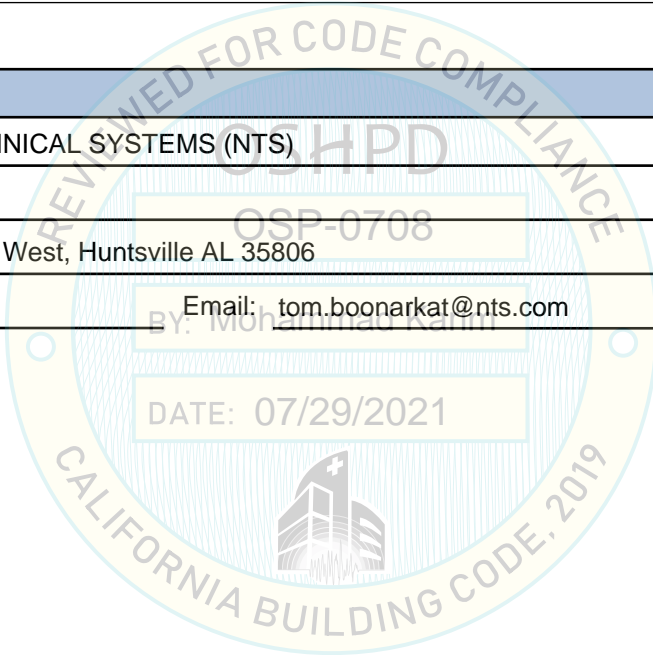
Company Name: ISAT SEISMIC BRACING
Name: WILLIAM JOERGER California License Number: S4545
Mailing Address: 14848 Northam Street, La Mirada, CA 90638
Telephone: (714) 920-6066 Email: wvjoerger@isatsb.com

Certification Method

GR-63-Core ICC-ES AC156 IEEE 344 IEEE 693 NEBS 3
 Other (Please Specify): _____

Testing Laboratory

Company Name: NATIONAL TECHNICAL SYSTEMS (NTS)
Contact Person: Tom Boonarkat
Mailing Address: 7800 Highway 20 West, Huntsville AL 35806
Telephone: (256) 716-4520 Email: tom.boonarkat@nts.com





**OFFICE OF STATEWIDE HEALTH PLANNING AND DEVELOPMENT
FACILITIES DEVELOPMENT DIVISION**

Seismic Parameters

Design Basis of Equipment or Components (F_p/W_p) = 1.29

SDS (Design spectral response acceleration at short period, g) = 1.72

a_p (Amplification factor) = 2.5

R_p (Response modification factor) = 6.0

Ω_0 (System overstrength factor) = 2.0

I_p (Importance factor) = 1.5

z/h (Height ratio factor) = 1

Natural frequencies (Hz) = See Attachment

Overall dimensions and weight = See Attachment

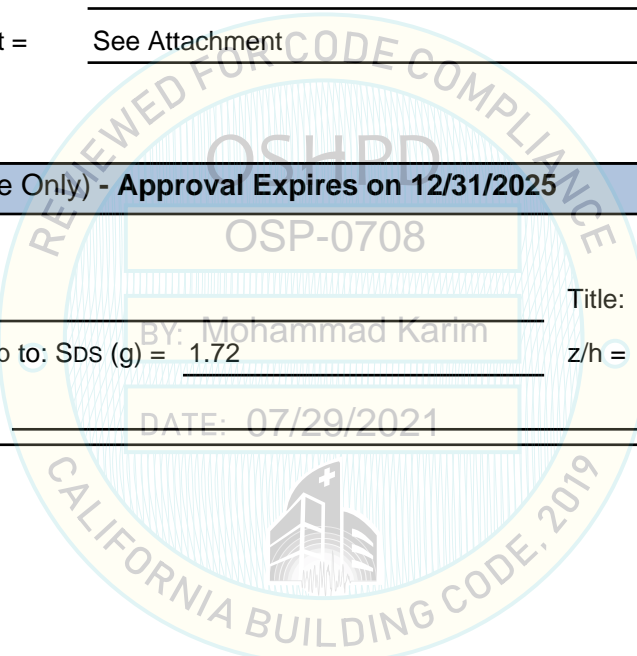
OSHPD Approval (For Office Use Only) - Approval Expires on 12/31/2025

Date: 7/29/2021

Name: Mohammad Karim Title: Supervisor, Health Facilities

Special Seismic Certification Valid Up to: SDS (g) = 1.72 z/h = 1

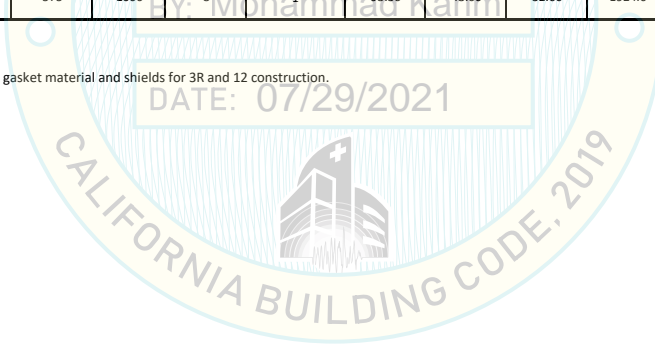
Condition of Approval (if applicable): DATE: 07/29/2021



Special Seismic Certification
Certified Components
Manufacturer: Eaton Corporation
Product Line: Enclosed Control Eaton Assemblies
Certified Mounting: Floor

Panel Descriptions	Enclosed VFD Model Line	Model	Maximum Voltage (V)	Power (HP-Max)	Enclosure Model	Enclosure Environmental Rating*	Height (in.)	Width (in.)	Depth (in.)	Wgt (lbs)	C.G. Height (in)	S _{DS} (g)	F _p /W _p	Max Tension	UUT Status
Metal floor standing enclosures containing VFD, protection and switching components*	EGS,EGF,EHB,CFX,SVX	EGF2404C1300310000	575	250	DX	1	83.00	31.00	26.00	950.0	35.7	1.72	1.29	743	Interpolated
	EGS,EGF,EHB,CFX,SVX	EGF2404C2300310000	575	250	DX	12	83.00	31.00	26.00	950.0	35.5	1.72	1.29	739	Interpolated
	EGS,EGF,EHB,CFX,SVX	EGF2404C3300310000	575	250	DX	3R	89.70	31.00	27.50	1024.0	37.7	1.72	1.29	833	15
	EGS,EGF,EHB,CFX,SVX	EGF3024A112AC20000	575	250	EX	1	93.50	40.00	36.00	1628.0	38.1	1.72	1.29	1034	Interpolated
	EGS,EGF,EHB,CFX,SVX	EGF3024A212AC20000	575	250	EX	12	93.50	40.00	36.00	1628.0	38.2	1.72	1.29	1036	11
	EGS,EGF,EHB,CFX,SVX	EGF3024A312AC20000	575	250	EX	3R	94.00	40.00	38.50	1728.0	38.2	1.72	1.29	1082	Interpolated
	EGS,EGF,EHB,CFX,SVX	EGF3024A11LGB20000	575	250	FX	1	93.50	48.00	36.00	1625.0	41.9	1.72	1.29	993	Interpolated
	EGS,EGF,EHB,CFX,SVX	EGF3024A21LGB20000	575	250	FX	12	93.50	48.00	36.00	1625.0	41.9	1.72	1.29	993	Interpolated
	EGS,EGF,EHB,CFX,SVX	EGF3024A31LGB20000	575	250	FX	3R	94.00	48.00	38.50	1772.0	44.7	1.72	1.29	1134	12
	EGP,CPX	CPX25064AA	575	1000	8	1	93.50	48.00	32.00	1924.0	33.5	1.72	1.29	974	13

* - Enclosure material is carbon steel, and overall construction is common. Differences include gasket material and shields for 3R and 12 construction.



Special Seismic Certification

Certified Components

Manufacturer: Eaton Corporation brand labeled JCI

Product Line: Enclosed Control JCI/Eaton Assemblies

Certified Mounting: Floor

Panel Descriptions	Enclosed VFD Model Line	Model	Maximum Voltage (V)	Power (HP)	Enclosure Model	Enclosure Environmental Rating*	Height (in.)	Width (in.)	Depth (in.)	Wgt (lbs)	C.G. Height (in)	S _{DS} (g)	F _p /W _p	Max Tension	UUT Status
Metal floor standing enclosures containing VFD, protection and switching components*	VS3-	VS3-200-C-N1D-0	575	250	DX	1	83.00	31.00	26.00	950.0	35.7	1.72	1.29	743	Interpolated
	VS3-	VS3-200-C-N2D-0	575	250	DX	12	83.00	31.00	26.00	950.0	35.5	1.72	1.29	739	Interpolated
	VS3-	VS3-200-C-N3D-0	575	250	DX	3R	89.70	31.00	27.50	1024.0	37.7	1.72	1.29	833	15
	VS3-	VS3-250-C-N1B-3	575	250	EX	1	93.50	40.00	36.00	1628.0	38.1	1.72	1.29	1034	Interpolated
	VS3-	VS3-250-C-N2B-3	575	250	EX	12	93.50	40.00	36.00	1628.0	38.2	1.72	1.29	1036	11
	VS3-	VS3-250-C-N3B-3	575	250	EX	3R	94.00	40.00	38.50	1728.0	38.2	1.72	1.29	1082	Interpolated
	VS3-	VS3-250-C-N1B-3	575	250	FX	1	93.50	48.00	36.00	1625.0	41.9	1.72	1.29	993	Interpolated
	VS3-	VS3-250-C-N2B-3	575	250	FX	12	93.50	48.00	36.00	1625.0	41.9	1.72	1.29	993	Interpolated
	VS3-	VS3-250-C-N3B-3	575	250	FX	3R	94.00	48.00	38.50	1772.0	44.7	1.72	1.29	1134	12

* - Enclosure material is carbon steel, and overall construction is common. Differences include gasket material and shields for 3R and 12 construction.

DATE: 07/29/2021



Special Seismic Certification
Certified Subcomponents
Manufacturer: Eaton Corporation
Product Line: Enclosed Control Eaton Assemblies
Subcomponent: Variable Frequency Drives

VFD Model	Model	Frame Size	Volts (V)	Power (HP)	Current (A)	Height (in.)	Width (in.)	Depth (in.)	Weight (lbs.)	Component Mounting	UUT Status
DH1-324D8	DH1	1	230V	1.0	4.8	12.9	6.0	7.9	14.3	Flange	Extrapolated
DH1-326D6	DH1	1	230V	1.5	6.6	12.9	6.0	7.9	14.3	Flange	Extrapolated
DH1-327D8	DH1	1	230V	2.0	7.8	12.9	6.0	7.9	14.3	Flange	Extrapolated
DH1-32011	DH1	1	230V	3.0	11	12.9	6.0	7.9	14.3	Flange	Extrapolated
DH1-32012	DH1	1	230V	3.0	12	12.9	6.0	7.9	14.3	Flange	Extrapolated
DH1-343D3	DH1	1	480V	1.5	3.3	12.9	6.0	7.9	14.3	Flange	Extrapolated
DH1-344D3	DH1	1	480V	2.0	4.3	12.9	6.0	7.9	14.3	Flange	Extrapolated
DH1-345D6	DH1	1	480V	3.0	5.6	12.9	6.0	7.9	14.3	Flange	Extrapolated
DH1-347D6	DH1	1	480V	5.0	7.6	12.9	6.0	7.9	14.3	Flange	Extrapolated
DG1-349D0	DG1	1	480V	7.5	9	12.9	6.0	7.9	14.3	Flange	Extrapolated
DH1-34012	DH1	1	480V	7.5	12	12.9	6.0	7.9	14.3	Flange	Extrapolated
DH1-354D5	DH1	1	575V	3.0	4.5	12.9	6.0	7.9	14.3	Flange	Extrapolated
DH1-357D5	DH1	1	575V	5.0	7.5	12.9	6.0	7.9	14.3	Flange	Extrapolated
DH1-35010	DH1	1	575V	7.5	10	12.9	6.0	7.9	14.3	Flange	Extrapolated
SVXF07A1-2	SVX	4	230V	0.8	3.7/4.8	12.9	5.0	7.5	11.0	Flange	Extrapolated
SPXF07A1-2	SPX	4	230V	0.8	3.7/4.8	12.9	5.0	7.5	11.0	Flange	Extrapolated
SVX001A1-2	SVX	4	230V	1.0	4.8/6.5	12.9	5.0	7.5	11.0	Flange	Extrapolated
SPX001A1-2	SPX	4	230V	1.0	4.8/6.5	12.9	5.0	7.5	11.0	Flange	Extrapolated
SVXF15A1-2	SVX	4	230V	1.5	6.6/7.8	12.9	5.0	7.5	11.0	Flange	Extrapolated
SPXF15A1-2	SPX	4	230V	1.5	6.6/7.8	12.9	5.0	7.5	11.0	Flange	Extrapolated
SVX002A1-2	SVX	4	230V	2.0	7.8/11	12.9	5.0	7.5	11.0	Flange	Extrapolated
SPX002A1-2	SPX	4	230V	2.0	7.8/11	12.9	5.0	7.5	11.0	Flange	Extrapolated
SVX003A1-2	SVX	4	230V	3.0	11/12.5	12.9	5.0	7.5	11.0	Flange	Extrapolated
SPX003A1-2	SPX	4	230V	3.0	11/12.5	12.9	5.0	7.5	11.0	Flange	Extrapolated
SVX001A1-4	SVX	4	480V	1.0	2.2/3.3	12.9	5.0	7.5	11.0	Flange	Extrapolated
SPX001A1-4	SPX	4	480V	1.0	2.2/3.3	12.9	5.0	7.5	11.0	Flange	Extrapolated
SVXF15A1-4	SVX	4	480V	1.5	3.3/4.3	12.9	5.0	7.5	11.0	Flange	Extrapolated
SPXF15A1-4	SPX	4	480V	1.5	3.3/4.3	12.9	5.0	7.5	11.0	Flange	Extrapolated
SVX002A1-4	SVX	4	480V	2.0	4.3/5.6	12.9	5.0	7.5	11.0	Flange	Extrapolated
SPX002A1-4	SPX	4	480V	2.0	4.3/5.6	12.9	5.0	7.5	11.0	Flange	Extrapolated
SVX003A1-4	SVX	4	480V	3.0	5.6/7.6	12.9	5.0	7.5	11.0	Flange	Extrapolated
SPX003A1-4	SPX	4	480V	3.0	5.6/7.6	12.9	5.0	7.5	11.0	Flange	Extrapolated
SVX005A1-4	SVX	4	480V	5.0	7.6	12.9	5.0	7.5	11.0	Flange	Extrapolated
SPX005A1-4	SPX	4	480V	5.0	7.6	12.9	5.0	7.5	11.0	Flange	Extrapolated
DG1-323D7	DG1	1	230V	0.8	3.7/4.8	12.9	6.0	7.9	14.3	Flange	Extrapolated
DG1-324D8	DG1	1	230V	1.0	4.8/6.6	12.9	6.0	7.9	14.3	Flange	Extrapolated
DG1-326D6	DG1	1	230V	1.5	6.6/7.8	12.9	6.0	7.9	14.3	Flange	Extrapolated
DG1-327D8	DG1	1	230V	2.0	7.8/11	12.9	6.0	7.9	14.3	Flange	Extrapolated
DG1-32011	DG1	1	230V	3.0	11	12.9	6.0	7.9	14.3	Flange	Extrapolated
DG1-342D2	DG1	1	480V	1.0	2.2	12.9	6.0	7.9	14.3	Flange	Extrapolated
DG1-343D3	DG1	1	480V	1.5	3.3	12.9	6.0	7.9	14.3	Flange	Extrapolated
DG1-344D3	DG1	1	480V	2.0	4.3	12.9	6.0	7.9	14.3	Flange	Extrapolated
DG1-345D6	DG1	1	480V	3.0	5.6	12.9	6.0	7.9	14.3	Flange	Extrapolated
DG1-347D6	DG1	1	480V	5.0	7.6	12.9	6.0	7.9	14.3	Flange	Extrapolated
DG1-353D3	DG1	1	575V	2.0	3.3/4.5	12.9	6.0	7.9	14.3	Flange	Extrapolated
DG1-354D5	DG1	1	575V	3.0	4.5/7.5	12.9	6.0	7.9	14.3	Flange	Extrapolated
DG1-357D5	DG1	1	575V	5.0	7.5/10	12.9	6.0	7.9	14.3	Flange	Extrapolated
SVX004A1-2	SVX	5	230V	5.0	17.5	16.5	5.7	8.4	17.9	Flange	Extrapolated
SPX004A1-2	SPX	5	230V	5.0	17.5	16.5	5.7	8.4	17.9	Flange	Extrapolated
SVX005A1-2	SVX	5	230V	5.0	17.5/25	16.5	5.7	8.4	17.9	Flange	Extrapolated
SPX005A1-2	SPX	5	230V	5.0	17.5/25	16.5	5.7	8.4	17.9	Flange	Extrapolated
SVX007A1-2	SVX	5	230V	7.5	25/31	16.5	5.7	8.4	17.9	Flange	Extrapolated
SPX007A1-2	SPX	5	230V	7.5	25/31	16.5	5.7	8.4	17.9	Flange	Extrapolated
SVX007A1-4	SVX	5	480V	7.5	12/16	16.5	5.7	8.4	17.9	Flange	Extrapolated
SPX007A1-4	SPX	5	480V	7.5	12/16	16.5	5.7	8.4	17.9	Flange	Extrapolated
SVX010A1-4	SVX	5	480V	10.0	16/23	16.5	5.7	8.4	17.9	Flange	Extrapolated
SPX010A1-4	SPX	5	480V	10.0	16/23	16.5	5.7	8.4	17.9	Flange	Extrapolated
SVX015A1-4	SVX	5	480V	15.0	23/31	16.5	5.7	8.4	17.9	Flange	Extrapolated
SPX015A1-4	SPX	5	480V	15.0	23/31	16.5	5.7	8.4	17.9	Flange	Extrapolated
DG1-32017	DG1	2	230V	5.0	12.5/25	16.5	6.6	9.6	23.4	Flange	Extrapolated
DG1-32025	DG1	2	230V	7.5	25/31	16.5	6.6	9.6	23.4	Flange	Extrapolated
DG1-34012	DG1	2	480V	7.5	12/16	16.5	6.6	9.6	23.4	Flange	Extrapolated
DG1-34016	DG1	2	480V	10.0	16/23	16.5	6.6	9.6	23.4	Flange	Extrapolated
DG1-34023	DG1	2	480V	15.0	23/31	16.5	6.6	9.6	23.4	Flange	Extrapolated
DG1-35010	DG1	2	575V	7.5	10/13	16.5	6.6	9.6	23.4	Flange	Extrapolated
DG1-35013	DG1	2	575V	10.0	13/18	16.5	6.6	9.6	23.4	Flange	Extrapolated
DG1-35018	DG1	2	575V	15.0	18/22	16.5	6.6	9.6	23.4	Flange	Extrapolated
DG1-32012	DG1	2	230V	5.0	12.5/17.5	16.5	6.6	9.6	23.4	Flange	Extrapolated
DH1-32017	DH1	2	230V	5.0	17.5	16.5	6.6	9.6	23.4	Flange	Extrapolated
DH1-32025	DH1	2	230V	7.5	25	16.5	6.6	9.6	23.4	Flange	Extrapolated
DH1-32031	DH1	2	230V	10.0	31	16.5	6.6	9.6	23.4	Flange	Extrapolated
DH1-34016	DH1	2	480V	10.0	16	16.5	6.6	9.6	23.4	Flange	Extrapolated
DH1-34023	DH1	2	480V	15.0	23	16.5	6.6	9.6	23.4	Flange	Extrapolated
DH1-34031	DH1	2	480V	20.0	31	16.5	6.6	9.6	23.4	Flange	Extrapolated
DH1-35013	DH1	2	575V	10.0	13	16.5	6.6	9.6	23.4	Flange	Extrapolated
DH1-35018	DH1	2	575V	15.0	18	16.5	6.6	9.6	23.4	Flange	Extrapolated
DH1-35022	DH1	2	575V	20.0	22	16.5	6.6	9.6	23.4	Flange	Extrapolated
SVX010A1-2	SVX	6	230V	10.0	31/48	22.0	7.7	9.3	40.8	Flange	Extrapolated
SPX010A1-2	SPX	6	230V	10.0	31/48	22.0	7.7	9.3	40.8	Flange	Extrapolated
SVX015A1-2	SVX	6	230V	15.0	48/61	22.0	7.7	9.3	40.8	Flange	Extrapolated

Continued on next page

Special Seismic Certification
Certified Subcomponents
Manufacturer: Eaton Corporation
Product Line: Enclosed Control Eaton Assemblies
Subcomponent: Variable Frequency Drives

VFD Model	Model	Frame Size	Volts (V)	Power (HP)	Current (A)	Height (in.)	Width (in.)	Depth (in.)	Weight (lbs.)	Component Mounting	UUT Status
SPX015A1-2	SPX	6	230V	15.0	48/61	22.0	7.7	9.3	40.8	Flange	Extrapolated
SVX020A1-4	SVX	6	480V	20.0	31/38	22.0	7.7	9.3	40.8	Flange	Extrapolated
SPX020A1-4	SPX	6	480V	20.0	31/38	22.0	7.7	9.3	40.8	Flange	Extrapolated
SVX025A1-4	SVX	6	480V	25.0	38/46	22.0	7.7	9.3	40.8	Flange	Extrapolated
SPX025A1-4	SPX	6	480V	25.0	38/46	22.0	7.7	9.3	40.8	Flange	Extrapolated
SVX030A1-4	SVX	6	480V	30.0	46/61	22.0	7.7	9.3	40.8	Flange	Extrapolated
SPX030A1-4	SPX	6	480V	30.0	46/61	22.0	7.7	9.3	40.8	Flange	Extrapolated
SVX002A1-5	SVX	6	575V	2.0	3.3/4.5	22.0	7.7	9.3	40.8	Flange	Extrapolated
SPX002A1-5	SPX	6	575V	2.0	3.3/4.5	22.0	7.7	9.3	40.8	Flange	Extrapolated
SVX003A1-5	SVX	6	575V	3.0	4.5/7.5	22.0	7.7	9.3	40.8	Flange	Extrapolated
SPX003A1-5	SPX	6	575V	3.0	4.5/7.5	22.0	7.7	9.3	40.8	Flange	Extrapolated
SVX005A1-5	SVX	6	575V	5.0	7.5/10	22.0	7.7	9.3	40.8	Flange	Extrapolated
SPX005A1-5	SPX	6	575V	5.0	7.5/10	22.0	7.7	9.3	40.8	Flange	Extrapolated
SVX007A1-5	SVX	6	575V	7.5	10/13.5	22.0	7.7	9.3	40.8	Flange	Extrapolated
SPX007A1-5	SPX	6	575V	7.5	10/13.5	22.0	7.7	9.3	40.8	Flange	Extrapolated
SVX010A1-5	SVX	6	575V	10.0	13.5/18	22.0	7.7	9.3	40.8	Flange	Extrapolated
SPX010A1-5	SPX	6	575V	10.0	13.5/18	22.0	7.7	9.3	40.8	Flange	Extrapolated
SVX015A1-5	SVX	6	575V	15.0	18/22	22.0	7.7	9.3	40.8	Flange	Extrapolated
SPX015A1-5	SPX	6	575V	15.0	18/22	22.0	7.7	9.3	40.8	Flange	Extrapolated
SVX020A1-5	SVX	6	575V	20.0	22/27	22.0	7.7	9.3	40.8	Flange	Extrapolated
SPX020A1-5	SPX	6	575V	20.0	22/27	22.0	7.7	9.3	40.8	Flange	Extrapolated
SVX025A1-5	SVX	6	575V	25.0	27/34	22.0	7.7	9.3	40.8	Flange	Extrapolated
SPX025A1-5	SPX	6	575V	25.0	27/34	22.0	7.7	9.3	40.8	Flange	Extrapolated
DG1-32031	DG1	3	230V	10.0	31/48	22.0	8.1	10.4	49.8	Flange	Extrapolated
DG1-32048	DG1	3	230V	15.0	48/61	22.0	8.1	10.4	49.8	Flange	Extrapolated
DG1-34031	DG1	3	480V	20.0	31/38	22.0	8.1	10.4	49.8	Flange	Extrapolated
DG1-34038	DG1	3	480V	25.0	38/46	22.0	8.1	10.4	49.8	Flange	Extrapolated
DG1-34046	DG1	3	480V	30.0	46/61	22.0	8.1	10.4	49.8	Flange	Extrapolated
DG1-35022	DG1	3	575V	20.0	22/27	22.0	8.1	10.4	49.8	Flange	Extrapolated
DG1-35027	DG1	3	575V	25.0	27/34	22.0	8.1	10.4	49.8	Flange	Extrapolated
DG1-35034	DG1	3	575V	30.0	34/41	22.0	8.1	10.4	49.8	Flange	Extrapolated
DH1-32048	DH1	3	230V	15.0	48	22.0	8.1	10.4	49.8	Flange	Extrapolated
DH1-32061	DH1	3	230V	20.0	61	22.0	8.1	10.4	49.8	Flange	Extrapolated
DH1-34038	DH1	3	480V	25.0	38	22.0	8.1	10.4	49.8	Flange	Extrapolated
DH1-34046	DH1	3	480V	30.0	46	22.0	8.1	10.4	49.8	Flange	Extrapolated
DH1-34061	DH1	3	480V	40.0	61	22.0	8.1	10.4	49.8	Flange	Extrapolated
DH1-35027	DH1	3	575V	25.0	27	22.0	8.1	10.4	49.8	Flange	Extrapolated
DH1-35034	DH1	3	575V	30.0	34	22.0	8.1	10.4	49.8	Flange	Extrapolated
DH1-35041	DH1	3	575V	40.0	41	22.0	8.1	10.4	49.8	Flange	Extrapolated
DG1-32061	DG1	4	230V	20.0	61/75	24.8	9.4	11.6	77.6	Flange	Extrapolated
SVX020A1-2	SVX	7	230V	20.0	61/75	25.6	10.6	10.1	77.6	Flange	Extrapolated
SPX020A1-2	SPX	7	230V	20.0	61/75	25.6	10.6	10.1	77.6	Flange	Extrapolated
DG1-32075	DG1	4	230V	25.0	75/88	24.8	9.4	11.6	77.6	Flange	Extrapolated
SVX025A1-2	SVX	7	230V	25.0	75/88	25.6	10.6	10.1	77.6	Flange	Extrapolated
SPX025A1-2	SPX	7	230V	25.0	75/88	25.6	10.6	10.1	77.6	Flange	Extrapolated
DG1-32088	DG1	4	230V	30.0	88/114	24.8	9.4	11.6	77.6	Flange	Extrapolated
SVX030A1-2	SVX	7	230V	30.0	88/114	25.6	10.6	10.1	77.6	Flange	Extrapolated
SPX030A1-2	SPX	7	230V	30.0	88/114	25.6	10.6	10.1	77.6	Flange	Extrapolated
DG1-34061	DG1	4	480V	40.0	61/72	24.8	9.4	11.6	77.6	Flange	Extrapolated
SVX040A1-4	SVX	7	480V	40.0	61/72	25.6	10.6	10.1	77.6	Flange	Extrapolated
SPX040A1-4	SPX	7	480V	40.0	61/72	25.6	10.6	10.1	77.6	Flange	Extrapolated
DG1-34072	DG1	4	480V	50.0	72/87	24.8	9.4	11.6	77.6	Flange	Extrapolated
SVX050A1-4	SVX	7	480V	50.0	72/87	25.6	10.6	10.1	77.6	Flange	Extrapolated
SPX050A1-4	SPX	7	480V	50.0	72/87	25.6	10.6	10.1	77.6	Flange	Extrapolated
DG1-34087	DG1	4	480V	60.0	87/105	24.8	9.4	11.6	77.6	Flange	Extrapolated
SVX060A1-4	SVX	7	480V	60.0	87/105	25.6	10.6	10.1	77.6	Flange	Extrapolated
SPX060A1-4	SPX	7	480V	60.0	87/105	25.6	10.6	10.1	77.6	Flange	Extrapolated
SVX030A1-5	SVX	7	575V	30.0	34/41	25.6	10.6	10.1	77.6	Flange	Extrapolated
SPX030A1-5	SPX	7	575V	30.0	34/41	25.6	10.6	10.1	77.6	Flange	Extrapolated
DG1-35041	DG1	4	575V	40.0	41/52	24.8	9.4	11.6	77.6	Flange	Extrapolated
SVX040A1-5	SVX	7	575V	40.0	41/52	25.6	10.6	10.1	77.6	Flange	Extrapolated
SPX040A1-5	SPX	7	575V	40.0	41/52	25.6	10.6	10.1	77.6	Flange	Extrapolated
DG1-35052	DG1	4	575V	50.0	52/62	24.8	9.4	11.6	77.6	Flange	Extrapolated
DG1-35062	DG1	4	575V	60.0	62/80	24.8	9.4	11.6	77.6	Flange	Extrapolated
DH1-32075	DH1	4	230V	25.0	75	24.8	9.4	11.6	77.6	Flange	Extrapolated
DH1-32088	DH1	4	230V	30.0	88	24.8	9.4	11.6	77.6	Flange	Extrapolated
DH1-32114	DH1	4	230V	40.0	114	24.8	9.4	11.6	77.6	Flange	Extrapolated
DH1-34072	DH1	4	480V	50.0	72	24.8	9.4	11.6	77.6	Flange	Extrapolated
DH1-34087	DH1	4	480V	60.0	87	24.8	9.4	11.6	77.6	Flange	Extrapolated
DH1-34105	DH1	4	480V	75.0	105	24.8	9.4	11.6	77.6	Flange	Extrapolated
DH1-35052	DH1	4	575V	50.0	52	24.8	9.4	11.6	77.6	Flange	Extrapolated
DH1-35062	DH1	4	575V	60.0	62	24.8	9.4	11.6	77.6	Flange	Extrapolated
DH1-35080	DH1	4	575V	75.0	80	24.8	9.4	11.6	77.6	Flange	Extrapolated
SVX040A1-2	SVX	8	230V	40.0	114/140	32.8	14.0	13.4	127.8	Flange	Extrapolated
SPX040A1-2	SPX	8	230V	40.0	114/140	32.8	14.0	13.4	127.8	Flange	Extrapolated
SVX050A1-2	SVX	8	230V	50.0	140/170	32.8	14.0	13.4	127.8	Flange	Extrapolated
SPX050A1-2	SPX	8	230V	50.0	140/170	32.8	14.0	13.4	127.8	Flange	Extrapolated
SVX060A1-2	SVX	8	230V	60.0	170/205	32.8	14.0	13.4	127.8	Flange	Extrapolated
SPX060A1-2	SPX	8	230V	60.0	170/205	32.8	14.0	13.4	127.8	Flange	Extrapolated
SVX075A1-4	SVX	8	480V	75.0	105/140	32.8	14.0	13.4	127.8	Flange	Extrapolated

Continued on next page

Special Seismic Certification
Certified Subcomponents
Manufacturer: Eaton Corporation
Product Line: Enclosed Control Eaton Assemblies
Subcomponent: Variable Frequency Drives

VFD Model	Model	Frame Size	Volts (V)	Power (HP)	Current (A)	Height (in.)	Width (in.)	Depth (in.)	Weight (lbs.)	Component Mounting	UUT Status
SPX075A1-4	SPX	8	480V	75.0	105/140	32.8	14.0	13.4	127.8	Flange	Extrapolated
SVX100A1-4	SVX	8	480V	100.0	140/170	32.8	14.0	13.4	127.8	Flange	Extrapolated
SPX100A1-4	SPX	8	480V	100.0	140/170	32.8	14.0	13.4	127.8	Flange	Extrapolated
SVX125A1-4	SVX	8	480V	125.0	170/205	32.8	14.0	13.4	127.8	Flange	Extrapolated
SPX125A1-4	SPX	8	480V	125.0	170/205	32.8	14.0	13.4	127.8	Flange	Extrapolated
SVX050A1-5	SVX	8	575V	50.0	52/62	32.8	14.0	13.4	127.8	Flange	Extrapolated
SPX050A1-5	SPX	8	575V	50.0	52/62	32.8	14.0	13.4	127.8	Flange	Extrapolated
SVX060A1-5	SVX	8	575V	60.0	62/80	32.8	14.0	13.4	127.8	Flange	Extrapolated
SPX060A1-5	SPX	8	575V	60.0	62/80	32.8	14.0	13.4	127.8	Flange	Extrapolated
SVX075A1-5	SVX	8	575V	75.0	80/100	32.8	14.0	13.4	127.8	Flange	Extrapolated
SPX075A1-5	SPX	8	575V	75.0	80/100	32.8	14.0	13.4	127.8	Flange	Extrapolated
DG1-32114	DG1	5	230V	40.0	114/143	35.0	11.3	13.4	154.3	Flange	Extrapolated
DG1-32143	DG1	5	230V	50.0	143/170	35.0	11.3	13.4	154.3	Flange	Extrapolated
DG1-32170	DG1	5	230V	60.0	170/211	35.0	11.3	13.4	154.3	Flange	Extrapolated
DG1-34105	DG1	5	480V	75.0	105/140	35.0	11.3	13.4	154.3	Flange	Extrapolated
DG1-34140	DG1	5	480V	100.0	140/170	35.0	11.3	13.4	154.3	Flange	Extrapolated
DG1-34170	DG1	5	480V	125.0	170/205	35.0	11.3	13.4	154.3	Flange	Extrapolated
DG1-35080	DG1	5	575V	75.0	80/100	35.0	11.3	13.4	154.3	Flange	Extrapolated
DG1-35100	DG1	5	575V	100.0	100/125	35.0	11.3	13.4	154.3	Flange	Extrapolated
DG1-35125	DG1	5	575V	125.0	125/144	35.0	11.3	13.4	154.3	Flange	Extrapolated
DH1-32143	DH1	5	230V	50.0	143	35.0	11.3	13.4	154.3	Flange	Extrapolated
DH1-32170	DH1	5	230V	60.0	170	35.0	11.3	13.4	154.3	Flange	Extrapolated
DH1-32211	DH1	5	230V	75.0	211	35.0	11.3	13.4	154.3	Flange	Extrapolated
DH1-34140	DH1	5	480V	100.0	140	35.0	11.3	13.4	154.3	Flange	Extrapolated
DH1-34170	DH1	5	480V	125.0	170	35.0	11.3	13.4	154.3	Flange	Extrapolated
DH1-34205	DH1	5	480V	150.0	205	35.0	11.3	13.4	154.3	Flange	Extrapolated
DH1-35100	DH1	5	575V	100.0	100	35.0	11.3	13.4	154.3	Flange	Extrapolated
DH1-35125	DH1	5	575V	125.0	125	35.0	11.3	13.4	154.3	Flange	Extrapolated
DH1-35144	DH1	5	575V	150.0	144	35.0	11.3	13.4	154.3	Flange	Extrapolated
DG1-32211	DG1	6	230V	75.0	211/248	34.0	19.1	14.6	281.3	Flange	Extrapolated
DG1-32248	DG1	6	230V	100.0	248/312	34.0	19.1	14.6	281.3	Flange	Extrapolated
DG1-34205	DG1	6	480V	150.0	205/245	34.0	19.1	14.6	281.3	Flange	Extrapolated
DG1-34245	DG1	6	480V	200.0	245/310	34.0	19.1	14.6	281.3	Flange	11,12,15
DG1-35144	DG1	6	575V	150.0	144/208	34.0	19.1	14.6	281.3	Flange	Interpolated
DG1-35208	DG1	6	575V	200.0	208/250	34.0	19.1	14.6	281.3	Flange	Interpolated
DH1-32261	DH1	6	230V	100.0	261	34.0	19.1	14.6	281.3	Flange	Interpolated
DH1-32312	DH1	6	230V	125.0	312	34.0	19.1	14.6	281.3	Flange	Interpolated
DH1-34261	DH1	6	480V	200.0	2245	34.0	19.1	14.6	281.3	Flange	Interpolated
DH1-34310	DH1	6	480V	250.0	310	34.0	19.1	14.6	281.3	Flange	Interpolated
DH1-35208	DH1	6	575V	200.0	208	34.0	19.1	14.6	281.3	Flange	Interpolated
DH1-35250	DH1	6	575V	250.0	250	34.0	19.1	14.6	281.3	Flange	Interpolated
SVX075A1-2	SVX	9	230V	75.0	205/261	45.3	18.8	14.3	321.9	Back Panel	Interpolated
SPX075A1-2	SPX	9	230V	75.0	205/261	45.3	18.8	14.3	321.9	Back Panel	Interpolated
SVX100A1-2	SVX	9	230V	100.0	261	45.3	18.8	14.3	321.9	Back Panel	Interpolated
SPX100A1-2	SPX	9	230V	100.0	261	45.3	18.8	14.3	321.9	Back Panel	Interpolated
SVX100A1-5	SVX	9	575V	100.0	100/125	45.3	18.8	14.3	321.9	Back Panel	Interpolated
SPX100A1-5	SPX	9	575V	100.0	100/125	45.3	18.8	14.3	321.9	Back Panel	Interpolated
SVX125A1-5	SVX	9	575V	125.0	125/144	45.3	18.8	14.3	321.9	Back Panel	Interpolated
SPX125A1-5	SPX	9	575V	125.0	125/144	45.3	18.8	14.3	321.9	Back Panel	Interpolated
SVX150A1-5	SVX	9	575V	150.0	144/170	45.3	18.8	14.3	321.9	Back Panel	Interpolated
SPX150A1-5	SPX	9	575V	150.0	144/170	45.3	18.8	14.3	321.9	Back Panel	Interpolated
SVX175A1-5	SVX	9	575V	175.0	170/208	45.3	18.8	14.3	321.9	Back Panel	Interpolated
SPX175A1-5	SPX	9	575V	175.0	170/208	45.3	18.8	14.3	321.9	Back Panel	Interpolated
SVX150A1-4	SVX	9	480V	150.0	205	45.3	18.8	14.3	321.9	Back Panel	Interpolated
SPX150A1-4	SPX	9	480V	150.0	205	45.3	18.8	14.3	321.9	Back Panel	Interpolated
SVX200A1-4	SVX	9	480V	200.0	245	45.3	18.8	14.3	321.9	Back Panel	Interpolated
SPX200A1-4	SPX	9	480V	200.0	245	45.3	18.8	14.3	321.9	Back Panel	13

Special Seismic Certification

Certified Subcomponents

Manufacturer: Eaton Corporation brand labeled JCI

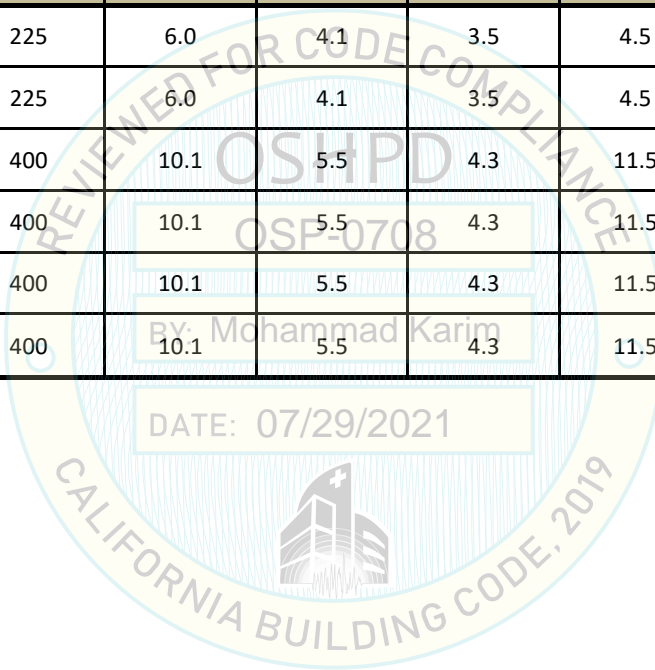
Product Line: Enclosed Control JCI Assemblies

Subcomponent: Variable Frequency Drives

VFD Model	Model Line	Size	Volts (V)	Power (HP)	Current (A)	Height (in.)	Width (in.)	Depth (in.)	Weight (lbs.)	Component Mounting	UUT Status
VS3D752	VS3	1	230V	1.0	4.8	12.9	6.0	7.9	14.3	Flange	Extrapolated
VS31D12	VS3	1	230V	1.5	6.6	12.9	6.0	7.9	14.3	Flange	Extrapolated
VS31D52	VS3	1	230V	2.0	7.8	12.9	6.0	7.9	14.3	Flange	Extrapolated
VS32D22	VS3	1	230V	3.0	11	12.9	6.0	7.9	14.3	Flange	Extrapolated
VS33D02	VS3	1	230V	3.0	12	12.9	6.0	7.9	14.3	Flange	Extrapolated
VS31D14	VS3	1	480V	1.5	3.3	12.9	6.0	7.9	14.3	Flange	Extrapolated
VS31D54	VS3	1	480V	2.0	4.3	12.9	6.0	7.9	14.3	Flange	Extrapolated
VS32D24	VS3	1	480V	3.0	5.6	12.9	6.0	7.9	14.3	Flange	Extrapolated
VS33D74	VS3	1	480V	5.0	7.6	12.9	6.0	7.9	14.3	Flange	Extrapolated
VS35D54	VS3	1	480V	7.5	12	12.9	6.0	7.9	14.3	Flange	Extrapolated
VS30035	VS3	1	575V	3.0	4.5	12.9	6.0	7.9	14.3	Flange	Extrapolated
VS30055	VS3	1	575V	5.0	7.5	12.9	6.0	7.9	14.3	Flange	Extrapolated
VS37D55	VS3	1	575V	7.5	10	12.9	6.0	7.9	14.3	Flange	Extrapolated
VS33D72	VS3	2	230V	5.0	17.5	16.5	6.6	9.6	23.4	Flange	Extrapolated
VS35D52	VS3	2	230V	7.5	25	16.5	6.6	9.6	23.4	Flange	Extrapolated
VS37D52	VS3	2	230V	10.0	31	16.5	6.6	9.6	23.4	Flange	Extrapolated
VS37D54	VS3	2	480V	10.0	16	16.5	6.6	9.6	23.4	Flange	Extrapolated
VS30114	VS3	2	480V	15.0	23	16.5	6.6	9.6	23.4	Flange	Extrapolated
VS30154	VS3	2	480V	20.0	31	16.5	6.6	9.6	23.4	Flange	Extrapolated
VS30105	VS3	2	575V	10.0	13	16.5	6.6	9.6	23.4	Flange	Extrapolated
VS30155	VS3	2	575V	15.0	18	16.5	6.6	9.6	23.4	Flange	Extrapolated
VS30205	VS3	2	575V	20.0	22	16.5	6.6	9.6	23.4	Flange	Extrapolated
VS30152	VS3	3	230V	15.0	48	22.0	8.1	10.4	49.8	Flange	Extrapolated
VS30202	VS3	3	230V	20.0	61	22.0	8.1	10.4	49.8	Flange	Extrapolated
VS30254	VS3	3	480V	25.0	38	22.0	8.1	10.4	49.8	Flange	Extrapolated
VS30304	VS3	3	480V	30.0	46	22.0	8.1	10.4	49.8	Flange	Extrapolated
VS30404	VS3	3	480V	40.0	61	22.0	8.1	10.4	49.8	Flange	Extrapolated
VS30255	VS3	3	575V	25.0	27	22.0	8.1	10.4	49.8	Flange	Extrapolated
VS30305	VS3	3	575V	30.0	34	22.0	8.1	10.4	49.8	Flange	Extrapolated
VS30405	VS3	3	575V	40.0	41	22.0	8.1	10.4	49.8	Flange	Extrapolated
VS30252	VS3	4	230V	25.0	75	24.8	9.4	11.6	77.6	Flange	Extrapolated
VS30302	VS3	4	230V	30.0	88	24.8	9.4	11.6	77.6	Flange	Extrapolated
VS30402	VS3	4	230V	40.0	114	24.8	9.4	11.6	77.6	Flange	Extrapolated
VS30504	VS3	4	480V	50.0	72	24.8	9.4	11.6	77.6	Flange	Extrapolated
VS30604	VS3	4	480V	60.0	87	24.8	9.4	11.6	77.6	Flange	Extrapolated
VS30754	VS3	4	480V	75.0	105	24.8	9.4	11.6	77.6	Flange	Extrapolated
VS30505	VS3	4	575V	50.0	52	24.8	9.4	11.6	77.6	Flange	Extrapolated
VS30605	VS3	4	575V	60.0	62	24.8	9.4	11.6	77.6	Flange	Extrapolated
VS30755	VS3	4	575V	75.0	80	24.8	9.4	11.6	77.6	Flange	Extrapolated
VS30502	VS3	5	230V	50.0	143	35.0	11.3	13.4	154.3	Flange	Extrapolated
VS30602	VS3	5	230V	60.0	170	35.0	11.3	13.4	154.3	Flange	Extrapolated
VS30752	VS3	5	230V	75.0	211	35.0	11.3	13.4	154.3	Flange	Extrapolated
VS31004	VS3	5	480V	100.0	140	35.0	11.3	13.4	154.3	Flange	Extrapolated
VS31254	VS3	5	480V	125.0	170	35.0	11.3	13.4	154.3	Flange	Extrapolated
VS31504	VS3	5	480V	150.0	205	35.0	11.3	13.4	154.3	Flange	Extrapolated
VS31005	VS3	5	575V	100.0	100	35.0	11.3	13.4	154.3	Flange	Extrapolated
VS31255	VS3	5	575V	125.0	125	35.0	11.3	13.4	154.3	Flange	Extrapolated
VS31505	VS3	5	575V	150.0	144	35.0	11.3	13.4	154.3	Flange	Extrapolated
VS31002	VS3	6	230V	100.0	261	34.0	19.1	14.6	281.3	Flange	Extrapolated
VS31252	VS3	6	230V	125.0	312	34.0	19.1	14.6	281.3	Flange	Extrapolated
VS32505	VS3	6	575V	250.0	250	34.0	19.1	14.6	281.3	Flange	Extrapolated
VS32504	VS3	6	480V	250.0	310	34.0	19.1	14.6	281.3	Flange	Extrapolated
VS32005	VS3	6	575V	200.0	208	34.0	19.1	14.6	281.3	Flange	Extrapolated
VS32004	VS3	6	480V	200.0	261	34.0	19.1	14.6	281.3	Flange	11,12,15

Special Seismic Certification
Certified Subcomponents
Manufacturer: Eaton Corporation
Product Line: Enclosed Control Eaton Assemblies
Subcomponent: Circuit Protection

Model	Description	Frame Size	Current (A)	Height (in)	Width (in)	Depth (in)	Weight (lbs.)	Material	Component Mounting	UUT Status
F	CB	F	225	6.0	4.1	3.5	4.5	Molded plastic, copper, steel	Bolted	Extrapolated
PD2	CB	2	225	6.0	4.1	3.5	4.5	Molded plastic, copper, steel	Bolted	Extrapolated
KDC3400	CB	K	400	10.1	5.5	4.3	11.5	Molded plastic, copper, steel	Bolted	11,12,15
PD3	CB	3	400	10.1	5.5	4.3	11.5	Molded plastic, copper, steel	Bolted	Interpolated
K	CB	K	400	10.1	5.5	4.3	11.5	Molded plastic, copper, steel	Bolted	Interpolated
HKD3400	CB	K	400	10.1	5.5	4.3	11.5	Molded plastic, copper, steel	Bolted	13



**Special Seismic Certification
Certified Subcomponents**

Manufacturer: Eaton Corporation

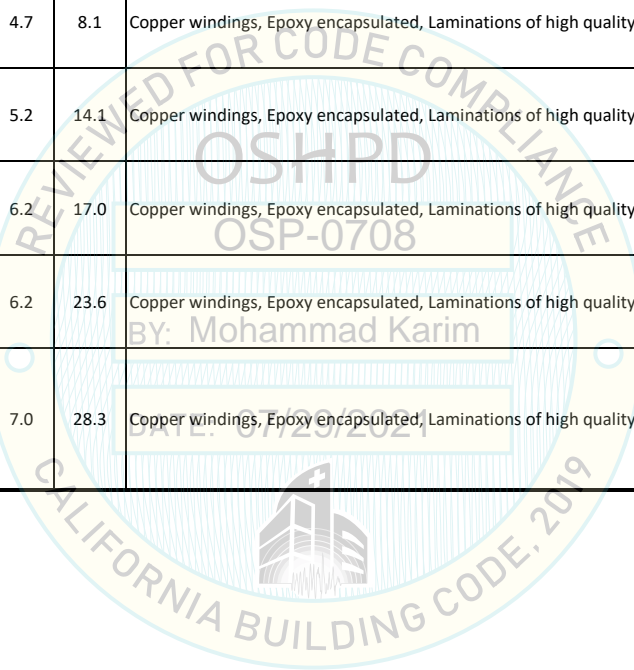
Product Line: Enclosed Control Eaton Assemblies

Subcomponent: Contactors

Model	Current (A)	Frame	Height (in)	Width (in)	Depth (in)	Weight (lbs.)	Material	Component Mounting	UUT Status
XTCE040D	63	D	4.7	2.2	5.8	2.4	Molded plastic, copper, steel	Bolted	Extrapolated
XTCE050D	80	D	4.7	2.2	5.8	2.4	Molded plastic, copper, steel	Bolted	Extrapolated
XTCE065D	88	D	4.7	2.2	5.8	2.4	Molded plastic, copper, steel	Bolted	Extrapolated
XTCE072D	88	D	4.7	2.2	5.8	2.4	Molded plastic, copper, steel	Bolted	Extrapolated
XTCE080F	125	F	6.7	4.4	6.3	4.6	Molded plastic, copper, steel	Bolted	Extrapolated
XTCE095F	125	F	6.7	4.4	6.3	4.6	Molded plastic, copper, steel	Bolted	Extrapolated
XTCE115G	180	G	6.7	4.4	6.3	4.6	Molded plastic, copper, steel	Bolted	15
XTCE150G	225	G	6.7	4.4	6.3	4.6	Molded plastic, copper, steel	Bolted	Interpolated
XTCE170G	225	G	6.7	4.4	6.3	4.6	Molded plastic, copper, steel	Bolted	Interpolated
XTCE185H	250	H	7.5	6.3	6.2	7.1	Molded plastic, copper, steel	Bolted	Interpolated
XTCE225H	250	H	7.5	6.3	6.2	7.1	Molded plastic, copper, steel	Bolted	Interpolated
XTCE185L	225	L	7.4	6.3	8.2	14.3	Molded plastic, copper, steel	Bolted	Interpolated
XTCE225L	250	L	7.4	6.3	8.2	14.3	Molded plastic, copper, steel	Bolted	Interpolated
XTCE250L	350	L	7.4	6.3	8.2	14.3	Molded plastic, copper, steel	Bolted	Interpolated
XTCE350L	350	L	7.4	6.3	8.2	14.3	Molded plastic, copper, steel	Bolted	Interpolated
XTCE400M	450	M	8.6	7.1	8.5	18.0	Molded plastic, copper, steel	Bolted	Interpolated
XTCE500M	550	M	8.6	7.1	8.5	18.0	Molded plastic, copper, steel	Bolted	Interpolated
XTCE300M	350	M	8.6	7.1	8.5	18.0	Molded plastic, copper, steel	Bolted	11,12,13

Soecial Seismic Certification
Certified Subcomponents
Manufacturer: Eaton Corporation
Product Line: Enclosed Control Eaton Assemblies
Subcomponent: Control Power Transformers

CPT Model	Power (VA)	Voltage (VAC) and Description	Height (in)	Width (in)	Depth (in)	Weight (lbs)	Material	Component Mounting	UUT Status
C0050	50	Primary: 550/575/600 Secondary: 110/115/120	3.5	5.0	5.5	2.9	Copper windings, Epoxy encapsulated, Laminations of high quality silicon steel	Bolted	Extrapolated
C0150	150	Primary: 200/220/440, 208/230/460, 240/480 Secondary: 23/110, 24/115, 25/120	3.8	4.0	4.7	8.1	Copper windings, Epoxy encapsulated, Laminations of high quality silicon steel	Bolted	Extrapolated
C0250	250	Primary: 200/220/440, 208/230/460, 240/480 Secondary: 23/110, 24/115, 25/120	5.5	5.2	5.2	14.1	Copper windings, Epoxy encapsulated, Laminations of high quality silicon steel	Bolted	Extrapolated
C0350	350	Primary: 200/220/440, 208/230/460, 240/480 Secondary: 23/110, 24/115, 25/120	5.7	5.2	6.2	17.0	Copper windings, Epoxy encapsulated, Laminations of high quality silicon steel	Bolted	11,12
C0500	500	Primary: 200/220/440, 208/230/460, 240/480 Secondary: 23/110, 24/115, 25/120	5.7	5.2	6.2	23.6	Copper windings, Epoxy encapsulated, Laminations of high quality silicon steel	Bolted	15
C0750	750	Primary: 240 x 480, 230 x 460, 220 x 440 with jumpers and Two-Pole fuse block for Rejection-type fuses Secondary: 120/115/110	5.0	4.0	7.0	28.3	Copper windings, Epoxy encapsulated, Laminations of high quality silicon steel	Bolted	13



**Special Seismic Certification
Certified Subcomponents**

Manufacturer: TCI

Product Line: Enclosed Control Eaton Assemblies

Subcomponent: Filters

Model	Current (A)	Width (in)	Height (in)	Depth (in)	Wt (lbs.)	Component Mounting	UUT Status
HGP0040AW0C0000	52	17	30.75	11.5	125	Bolted	Extrapolated
HGP0050AW0C0000	65	17	30.75	11.5	135	Bolted	Extrapolated
HGP0060AW0C0000	77	17	30.75	11.5	140	Bolted	Extrapolated
HGP0075AW0C0000	96	17	30.75	11.5	145	Bolted	Extrapolated
HGP0100AW0C0000	124	17	56	11.5	205	Bolted	Extrapolated
HGP0125AW0C0000	156	17	56	13.13	225	Bolted	Extrapolated
HGP0150AW0C0000	180	17	56	13.13	265	Bolted	15
HGP0200AW0C0000	240	17	67	13.5	350	Bolted	12
HGP0250AW0C0000	302	17	67	13.5	360	Bolted	13
HGP0300AW0C0000	361	17.31	67	14.5	490	Bolted	Interpolated
HGP0350AW0C0000	414	41.21	40	20.53	640	Bolted	Interpolated
HGP0400AW0C0000	477	41.21	40	20.53	690	Bolted	11



**Special Seismic Certification
Certified Subcomponents**

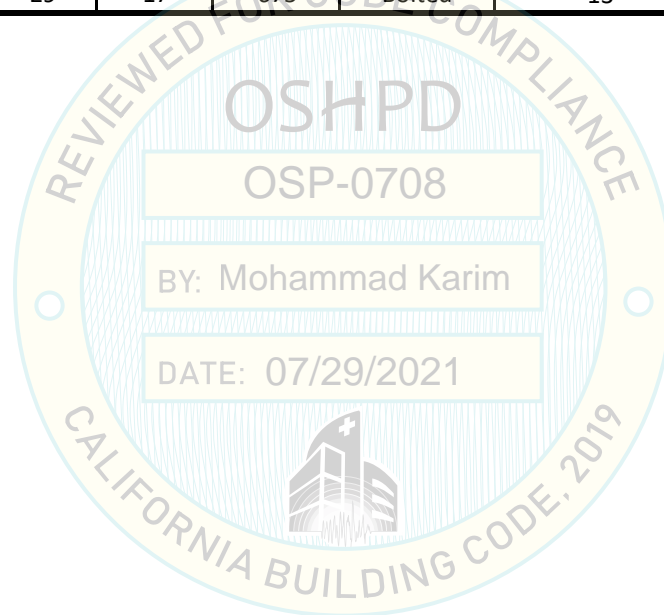
Manufacturer: Norlake

Product Line: Enclosed Control Eaton Assemblies

Subcomponent: Power Transformer Assy

Model	Voltage (V)	Current (A)	Width (in)	Height (in)	Depth (in)	Wt. (lbs)	Component Mounting	UUT Status
42-6370-A250 ¹	480V	361	27.5	29	17	675	Bolted	13

1- Specific model certified.



Special Seismic Certification
Certified Subcomponents
Manufacturer: Eaton Corporation
Product Line: Enclosed Control Eaton Assemblies
Subcomponent: Rectifier Assy

Model	Size (Hp)	Height (in.)	Width (in.)	Depth (in.)	Weight (lbs.)	Component Mounting	UUT Status
CPXRECT-FR9X ¹	250	6.2	12.0	9.3	10	Bolted	13

1- Specific model certified.



UUT 11 (Unit Under Test) Summary Sheet

Manufacturer: Eaton

Model Number: EGF3024A212AC20000

Product Construction Summary:

NEMA Type 12 Enclosure, mild carbon steel. Size EX enclosure.

Options/Component Summary:

DG1 SERIES VFD, 250HP, 302A, 480V W/PASSIVE FILTER

UUT Properties (As Tested)

Weight (lbs.)	Dimensions (inches)			Lowest Natural Frequency (Hz)		
	Width	Depth	Height	Front-Back	Side-Side	Vertical
1628	40.00	36.00	93.50	6.5	6.7	>33

Seismic Test Parameters

Building Code	Test Criteria	C.G.-Height (in.)	S _{Ds} (g)	z/h	I _p	A _{Fix-H}	A _{Rig-H}	A _{Fix-V}	A _{Rig-V}
CBC 2019	ICC-ES AC156	52.1	2.28	1	1.5	3.65	2.74	1.53	0.62

UUT maintained structural integrity and functionality as observed in post test inspection and operation checks.



UUT 11 was mounted to a rigid frame with (6) 1/2" bolts (Grade 5). The steel frame (carbon steel) was welded to the shake table.

PR111727

UUT 12 (Unit Under Test) Summary Sheet

Manufacturer: Eaton

Model Number: EGF3024A31LGB20000

Product Construction Summary:

NEMA type 3R enclosure, mild carbon steel. SIZE FX enclosure.

Options/Component Summary:

DG1 SERIES VFD, 250HP, 302A, 480V W/PASSIVE FILTER

UUT Properties (As Tested)

Weight (lbs.)	Dimensions (inches)			Lowest Natural Frequency (Hz)		
	Width	Depth	Height	Front-Back	Side-Side	Vertical
1772	48.00	38.50	94.00	6.5	9.5	>33

Seismic Test Parameters

Building Code	Test Criteria	C.G.-Height (in.)	S_{DS} (g)	z/h	I_p	A_{Fix-H}	A_{Rig-H}	A_{Fix-V}	A_{Rig-V}
CBC 2019	ICC-ES AC156	51.2	2.28	1	1.5	3.65	2.74	1.53	0.62

UUT maintained structural integrity and functionality as observed in post test inspection and operation checks.



UUT 12 was mounted to a rigid frame with (6) 1/2" bolts (Grade 5). The steel frame (carbon steel) was welded to the shake table.

UUT 13 (Unit Under Test) Summary Sheet

Manufacturer: Eaton

Model Number: CPX25064AA

Product Construction Summary:

NEMA type 1 enclosure, mild carbon steel. Size 8 enclosure.

Options/Component Summary:

CPX SERIES VFD, 250HP, 302A, 480V W/18 PULSE CLEAN POWER IN TYPE 1 SIZE 8 ENCLOSURE

UUT Properties (As Tested)

Weight (lbs.)	Dimensions (inches)			Lowest Natural Frequency (Hz)		
	Width	Depth	Height	Front-Back	Side-Side	Vertical
1924	48.00	32.00	93.50	4	6	25

Seismic Test Parameters

Building Code	Test Criteria	C.G.-Height (in.)	Sds (g)	z/h	Ip	Aflx-H	Arig-H	Aflx-V	Arig-V
CBC 2019	ICC-ES AC156	33.5	1.79	1	1.5	2.86	2.15	1.20	0.48

UUT maintained structural integrity and functionality as observed in post test inspection and operation checks.



UUT 13 was mounted to a rigid frame with (5) 1/2" bolts (Grade 5). The steel frame (carbon steel) was welded to the shake table.

PR123928

UUT 15 (Unit Under Test) Summary Sheet

Manufacturer: Eaton

Model Number: EGF2404C330031000D

Product Construction Summary:

NEMA type 3R enclosure, mild carbon steel. Size DX enclosure.

Options/Component Summary:

DG1 SERIES VFD, 200HP, 240A, 480V W/PASSIVE FILTER

UUT Properties (As Tested)

Weight (lbs.)	Dimensions (inches)			Lowest Natural Frequency (Hz)		
	Width	Depth	Height	Front-Back	Side-Side	Vertical
1024	31.00	26.00	83.00	3.5	5.2	27

Seismic Test Parameters

Building Code	Test Criteria	C.G.-Height (in.)	S_{DS} (g)	z/h	I_p	A_{Flx-H}	A_{Rig-H}	A_{Flx-V}	A_{Rig-V}
CBC 2019	ICC-ES AC156	44.2	1.72	1	1.5	2.75	2.06	1.15	0.46

UUT maintained structural integrity and functionality as observed in post test inspection and operation checks.



UUT 15 was mounted to a rigid frame with (8) 3/8" bolts (Grade 5). The steel frame (carbon steel) was welded to the shake table.

PR111727