



**OFFICE OF STATEWIDE HEALTH PLANNING AND DEVELOPMENT
FACILITIES DEVELOPMENT DIVISION**

**APPLICATION FOR OSHPD SPECIAL SEISMIC
CERTIFICATION PREAPPROVAL (OSP)**

OFFICE USE ONLY

APPLICATION #: OSP-0713

OSHPD Special Seismic Certification Preapproval (OSP)

Type: New Renewal

Manufacturer Information

Manufacturer: Schneider Electric

Manufacturer's Technical Representative: Scott Littler

Mailing Address: 330 Weakley Lane, Smyrna, TN 37167

Telephone: (615) 267-9407

Email: Scott.Littler@se.com

Product Information

Product Name: Industrial Control Panels

Product Type: Building Automation and Security Systems

Product Model Number: Digital Power Panels

General Description: Wall Mounted UL508A Power Metering & Control Panels - 600V & below

Mounting Description: Rigid, Wall Mounted

Tested Seismic Enhancements: None

DATE: 09/03/2021

Applicant Information

Applicant Company Name: Structural Integrity Associates, Inc.

Contact Person: Galen Reid

Mailing Address: 233 SW Wilson Ave Suite 101, Bend, OR 97702

Telephone: (541) 604-7225

Email: greid@structint.com

Title: Manager, TRU Compliance





**OFFICE OF STATEWIDE HEALTH PLANNING AND DEVELOPMENT
FACILITIES DEVELOPMENT DIVISION**

California Licensed Structural Engineer Responsible for the Engineering and Test Report(s)

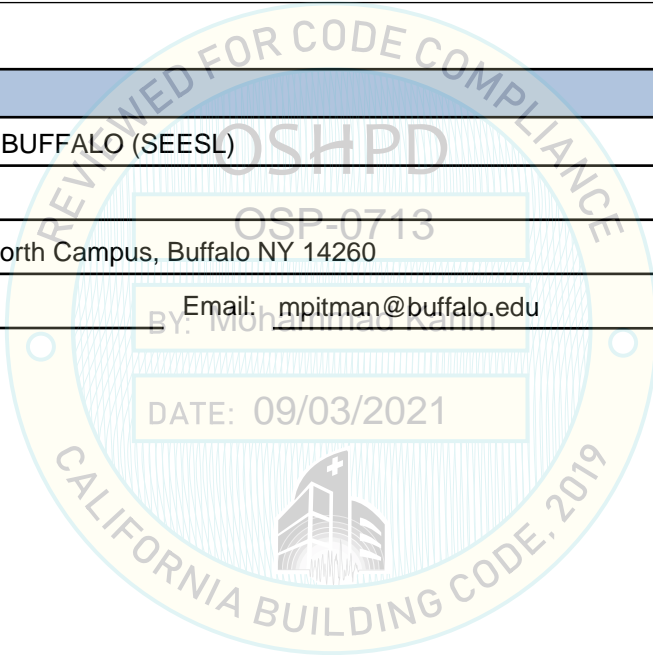
Company Name: STRUCTURAL INTEGRITY ASSOCIATES, INC.
Name: Andrew Coughlin California License Number: S6082
Mailing Address: 5215 Hellyer Ave, Suite 101, San Jose, CA 951381025
Telephone: (415) 635-8461 Email: acoughlin@structint.com

Certification Method

GR-63-Core ICC-ES AC156 IEEE 344 IEEE 693 NEBS 3
 Other (Please Specify): _____

Testing Laboratory

Company Name: UNIVERSITY OF BUFFALO (SEESL)
Contact Person: Mark C. Pittman
Mailing Address: 212 Ketter Hall, North Campus, Buffalo NY 14260
Telephone: (716) 645-4377 Email: mpitman@buffalo.edu





**OFFICE OF STATEWIDE HEALTH PLANNING AND DEVELOPMENT
FACILITIES DEVELOPMENT DIVISION**

Seismic Parameters

Design Basis of Equipment or Components (F_p/W_p) = 1.55 (SDS = 2.06); 1.20 (SDS = 2.66)

SDS (Design spectral response acceleration at short period, g) = 2.06 (z/h = 1.0); 2.66 (z/h = 0.0)

a_p (Amplification factor) = 2.5

R_p (Response modification factor) = 6.0

Ω_0 (System overstrength factor) = 2.0

I_p (Importance factor) = 1.5

z/h (Height ratio factor) = 1 and 0

Natural frequencies (Hz) = See Attachment

Overall dimensions and weight = See Attachment

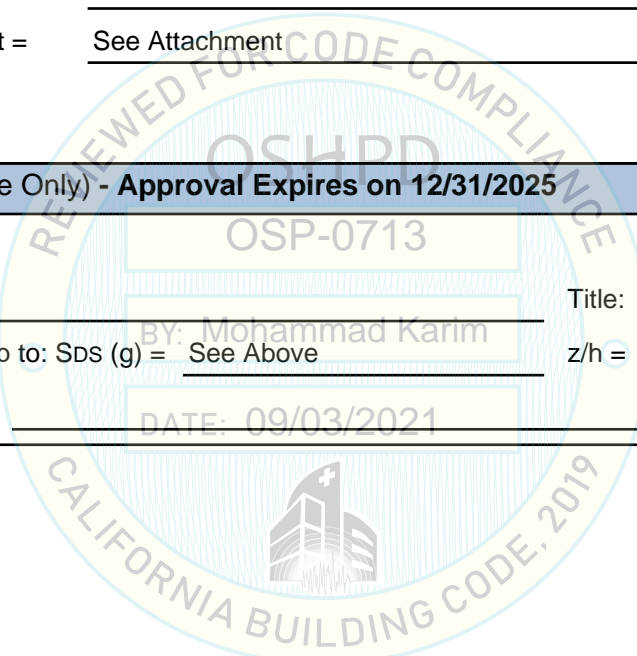
OSHPD Approval (For Office Use Only) - Approval Expires on 12/31/2025

Date: 9/3/2021

Name: Mohammad Karim Title: Supervisor, Health Facilities

Special Seismic Certification Valid Up to: SDS (g) = See Above z/h = See Above

Condition of Approval (if applicable): DATE: 09/03/2021



SPECIAL SEISMIC CERTIFICATION CERTIFIED SUBCOMPONENT MATRIX

2100568-CR-001-R0



Manufacturer: Schneider Electric Model Line: Digital Power Panels		Table Description: Subcomponents			TABLE 2	
Building Code: CBC 2019		Seismic Certification Limits:			$S_{DS} = 2.06g$ $z/h = 1.0$ $S_{DS} = 2.66g$ $z/h = 0.0$	
					$I_P = 1.5$	
Component Type	Manufacturer	Model	Description	Notes	UUT	
Enclosures	Saginaw Control & Engineering	SCE-20EL1608LP	NEMA 12, Carbon Steel Enclosure	9"D x 16"W x 20"H - 40 lbs.	4	
		SCE-*	Interp.	
		SCE-36EL3612LP	NEMA 12, Carbon Steel Enclosure	13"D x 36"W x 36"H - 150 lbs.	5	
Power Meters	Schneider Electric	METSEPM5563RD	PM5563 Power Meter	1 lb.	5	
		PM8244	PM8244 Power Meter w/ Remote Display	1.2 lbs.	4	
		METSEION95030	ION9000 Power Meter	3.5 lbs.	5	
		1 - 4.5 lbs.	Interp.	
		S7650T0C0B6E0A0A	ION7650 Transducer Meter	4.5 lbs.	5	
Control Power Transformers	Schneider Electric	9070T100D32	100VA w/o fuses; Class 9070	5.5 lbs.	4	
		9070T*	100VA - 500VA w/o fuses; Class 9070	5.5 - 18 lbs.	Interp.	
		9070T500D50	500VA w/o fuses; Class 9070	18 lbs.	5	
Voltage Transformer	Schneider Electric	460R-288	Voltage Transformer 2.4:1 Ratio	8.5 lbs.	5	
Power Supplies	Schneider Electric	ABL7 RE2402	48W, 24VDC	1 lb.	5	
	PULS	ML50.100	50W, 1PH, 24VDC	1 lb.	5	
	IDEC	PS5R-A24	7.5W, 24VDC	1 lb.	4	
	Phoenix Contact	2866763	24VDC, 240W	2.5 lbs.	5	
UPS	Sola	SDU500-A	500VA, 120VAC Line & Load	10.6 lbs.	5	
Circuit Breaker	Schneider Electric	24442	1A, 2P Multi9 - C60 Circuit Breaker	<1 lb.	4	
Display	Powerlogic	S765RD	Remote Display Touchscreen	1 lb.	5	
Fusible Disconnect Switch	Bussman	CCP-3-30CC	Load Break 3P Fusible Disconnect Switch	<1 lb.	5	
		CCP-1-30CC	Load Break 1P Fusible Disconnect Switch	<1 lb.	4,5	
		CCP-3-30CC	Load Break 3P Fusible Disconnect Switch	<1 lb.	5	
Shorting Block	Bussman	KUXSC8S2644	8-Pole Screw Type Shorting Block	<1 lb.	4	

SPECIAL SEISMIC CERTIFICATION CERTIFIED SUBCOMPONENT MATRIX

2100568-CR-001-R0



Manufacturer: Schneider Electric Model Line: Digital Power Panels		Table Description: Subcomponents			TABLE 2	
Building Code: CBC 2019		Seismic Certification Limits:			$S_{DS} = 2.06 g \quad z/h = 1.0$ $S_{DS} = 2.66 g \quad z/h = 0.0$	
					$I_p = 1.5$	
Component Type	Manufacturer	Model	Description	Notes	UUT	
Relays	Sola	SDUCFRELAYCARD	Dry Contact Relay for SDU Series UPS	<1 lb.	5	
	Phoenix Contact	2967086	Relay Module, PLC-BSC 120UC/21-21	<1 lb.	5	
	Schneider Electric	RPM42F7	120VAC, 15A, 250 VAC Power, Plug-in Relay	<1 lb.	5	
		RPM32BD	24VDC; 15A, 250VAC Power, Plug-in Relay	<1 lb.	4	
		8501RS44V20	Plug-in Relay, Type R, 1 HP	<1 lb.	4	
		8501RS14V20	Plug-in Relay, Type R, 0.5 HP	<1 lb.	4	
Terminal Jumper	Phoenix Contact	3030213	Terminal Jumper 10 Pole	<1 lb.	4,5	
Voltage Transducer	Phoenix Contact	2906242	DC to DC Voltage Transducer	<1 lb.	5	
Fuses	Bussman	FNQ-R-7	7A Class CC Rejection Type Fuse	<1 lb.	5	
		FNQ-R-3	3A Class CC Rejection Type Fuse	<1 lb.	5	
		FNQ-R-5	5A Class CC Rejection Type Fuse	<1 lb.	4,5	
		LP-CC-2	2A Class CC Rejection Type Fuse	<1 lb.	5	
		FNQ-R-1	1A Class CC Rejection Type Fuse	<1 lb.	4	
		FNQ-R-3/4	0.75A Class CC Rejection Type Fuse	<1 lb.	4	
Fuse Holders	Bussman	CHCC2DU	2P Modular Fuse Holder	<1 lb.	4,5	
		CHCC1DU	1P Modular Fuse Holder	<1 lb.	5	
Terminal Blocks	Phoenix Contact	3211867	Ground Terminal Block	<1 lb.	4,5	
		3211799	Single Tier Terminal Block	<1 lb.	4,5	
		3209604	Two Tier Terminal Block	<1 lb.	4,5	

UNIT UNDER TEST (UUT) SUMMARY SHEET

2100568-CR-001-R0



Manufacturer: Schneider Electric	UUT 4
Model Line: Digital Power Panels	
Model Number: 9761E8000R1Z Serial Number: 42371407-278	


Product Construction Summary:
Carbon steel enclosure

Options/Subcomponent Summary:
Enclosure: SCE-20EL1608LP; **Power Meter:** PM8244; **CPT:** 9070T100D32; **Power Supply:** PS5R-A24; **Circuit Breaker:** 24442;
Fusible Disconnect: CCP-1-30CC; **Shorting Block:** KUXSC8S2644; **Relays:** RPM32BD, 8501RS44V20, 8501RS14V20; **Terminal Jumper:** 3030213; **Fuses:** FNQ-R-1, FNQ-R-5, FNQ-R-3/4; **Fuse Holder:** CHCC2DU; **Terminal Blocks:** 3211799, 3209604, 3211867

UUT Properties						
Weight (lb)	Dimension (in)			Lowest Natural Frequency (Hz)		
	Depth	Width	Height	Front-Back	Side-Side	Vertical
49	9	16	20	N/A	N/A	N/A

UUT Highest Passed Seismic Run Information									
Building Code	Test Criteria	S _{DS} (g)	z/h	I _P	A _{FLX-H} (g)	A _{RIG-H} (g)	A _{FLX-V} (g)	A _{RIG-V} (g)	
CBC 2019	ICC-ES AC156 (2020)	2.06	1.0	1.5	3.3	2.47	1.77	0.71	
		2.66	0.0						

Test Mounting Details:



UUT was rigid wall mounted to the test fixture using (4) 3/8" bolts through the back of the panel.
 Unit maintained structural integrity and remained functional per manufacturer requirement after shake table test.
 Contents were included in testing per operating conditions.

