



**DEPARTMENT OF HEALTH CARE ACCESS AND INFORMATION
FACILITIES DEVELOPMENT DIVISION**

**APPLICATION FOR HCAI SPECIAL SEISMIC
CERTIFICATION PREAPPROVAL (OSP)**

OFFICE USE ONLY

APPLICATION #: OSP-0770

HCAI Special Seismic Certification Preapproval (OSP)

Type: New Renewal

Manufacturer Information

Manufacturer: ABB Industrial Solutions

Manufacturer's Technical Representative: Mike Di Lillo

Mailing Address: 700 Avenue Thomas, St-Jean-sur-Richelieu, QC J2X2M9

Telephone: (450) 357-8756

Email: mike.dilillo@ca.abb.com

Product Information

Product Name: Panelboards

Product Type: Panelboards

Product Model Number: Various (See Attachment)

General Description: Modular Metering equipment including Lug Modules, Main-Breaker Modules, Switch Modules, Meter-Modules (Hot and Cold Metering).

Mounting Description: Rigid, Wall Mounted

Tested Seismic Enhancements: Seismic enhancements made to the test units and/or modifications required to address anomalies during the tests shall be incorporated into the production units.

Applicant Information

Applicant Company Name: TRU Compliance, by Structural Integrity Associates

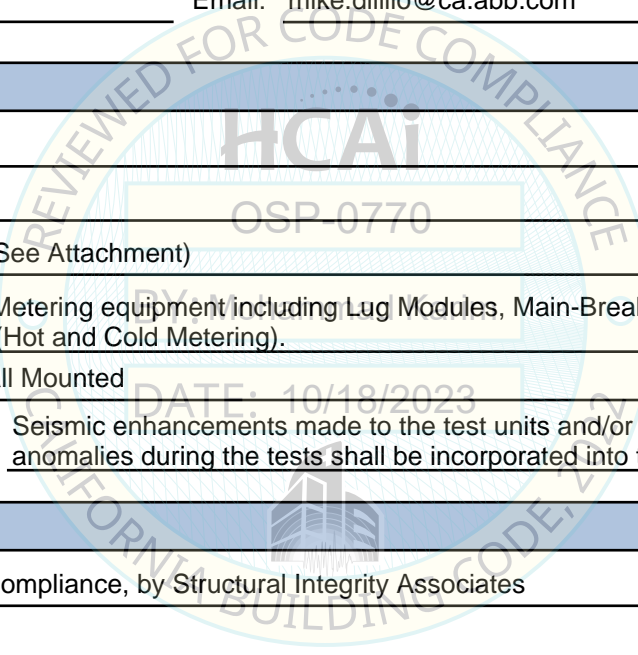
Contact Person: Daniel Zentner

Mailing Address: 233 SW Wilson Ave, Suite 101, Bend, OR 97702

Telephone: (541) 292-5839

Email: dzentner@structint.com

Title: Program Manager





**DEPARTMENT OF HEALTH CARE ACCESS AND INFORMATION
FACILITIES DEVELOPMENT DIVISION**

California Licensed Structural Engineer Responsible for the Engineering and Test Report(s)

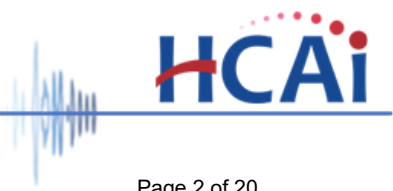
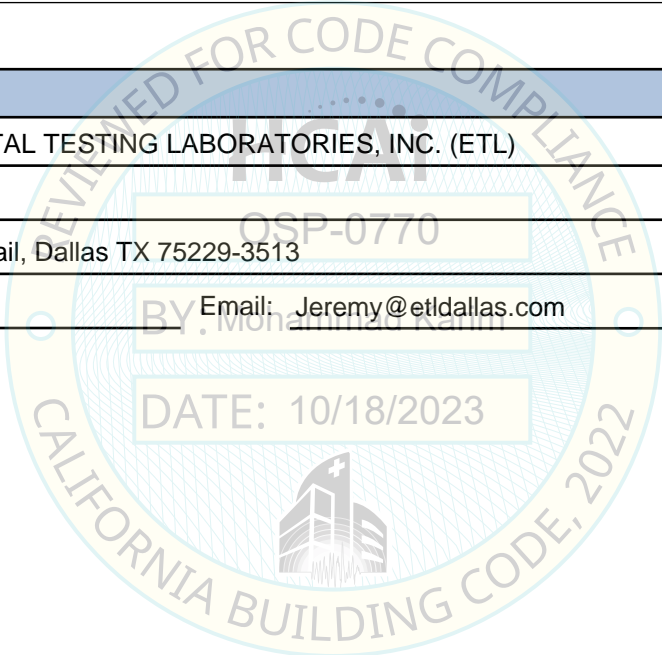
Company Name: STRUCTURAL INTEGRITY ASSOCIATES, INC.
Name: LACHEZAR HANDZHIYSKI California License Number: S6515
Mailing Address: 5215 Hellyer Avenue, Suite 210, San Jose, CA 95138
Telephone: (669) 437-0200 Email: Lhandzhiyski@StructInt.com

Certification Method

GR-63-Core ICC-ES AC156 IEEE 344 IEEE 693 NEBS 3
 Other (Please Specify): _____

Testing Laboratory

Company Name: ENVIRONMENTAL TESTING LABORATORIES, INC. (ETL)
Contact Person: Jeremy Lange
Mailing Address: 11034 Indian Trail, Dallas TX 75229-3513
Telephone: (972) 247-9657 Email: Jeremy@etldallas.com





**DEPARTMENT OF HEALTH CARE ACCESS AND INFORMATION
FACILITIES DEVELOPMENT DIVISION**

Seismic Parameters

Design Basis of Equipment or Components (F_p/W_p) = 1.50 (z/h = 1), 1.125 (z/h = 0)

SDS (Design spectral response acceleration at short period, g) = 2.0 at z/h=1, 2.5 at z/h=0

a_p (Amplification factor) = 2.5

R_p (Response modification factor) = 6

Ω_0 (System overstrength factor) = 2.0

I_p (Importance factor) = 1.5

z/h (Height ratio factor) = 1 and 0

Natural frequencies (Hz) = See Attachment

Overall dimensions and weight = See Attachment

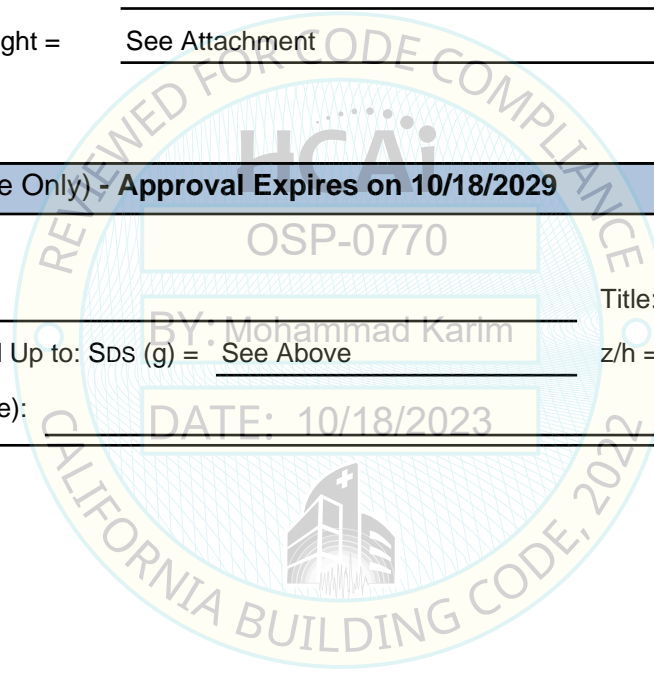
HCAI Approval (For Office Use Only) - Approval Expires on 10/18/2029

Date: 10/18/2023

Name: Mohammad Karim Title: Supervisor, Health Facilities

Special Seismic Certification Valid Up to: SDS (g) = See Above z/h = See Above

Condition of Approval (if applicable): DATE: 10/18/2023



SPECIAL SEISMIC CERTIFICATION CERTIFIED COMPONENT MATRIX

2100749-CR-001-R1



Manufacturer: ABB Industrial Solutions	TABLE 1
Model Line: RELIAMOD	

Certified Product Construction Summary:
 Lug Modules: 16 ga, 12 ga & 10 ga Carbon Steel Enclosure
 Main-Breaker Modules: 16ga, 14 ga, 12 ga & 10 ga Carbon Steel Enclosure
 Switch Modules: 16 ga, 14 ga, 12 ga & 10 ga Carbon Steel Enclosure

Certified Options Summary:
 Lug Modules: 400A to 2400A, 1PH/3W & 3PH/4W, 100kA IC Rating
 Main-Breaker Modules: 400A to 2000A, 1PH/3W & 3PH/4W, 65kA to 100kA IC Rating, with and without Integral Pullbox
 Switch Modules: 400A to 800A, 1PH/3W & 3PH/4W, 100kA IC Rating, with and without Integral Pullbox

Mounting Configuration:
 Wall mounted - rigid
 Note: Installed mounting must be of similar configuration and equivalent strength and stiffness to those tested.

Building Code: CBC 2022 **Seismic Certification Limits:** $S_{DS} = 2.0g$ $z/h = 1.0$ $I_p = 1.5$
 $S_{DS} = 2.5g$ $z/h = 0.0$

Model Line	Model	Dimensions (in)			Weight (lbs.)	Notes	UUT
		Depth	Width	Height			
Main-Module ¹ (Lugs)	RMM_L4R	6.5	13.5	48.0	90	400A MLO	Extrap.
	RMM_L6R	6.5	16.5	48.0	100	600A MLO	Extrap.
	RMM_L8R	11.2	20.1	48.0	140	800A MLO	Extrap.
	RMM_L12R	11.2	20.1	48.0	140	1200A MLO	Extrap.
	RMM_L16R	18.0	33.0	61.0	285	1600A MLO	Extrap.
	RMM_L20R	18.0	33.0	61.0	285	2000A MLO	Extrap.
	RMM_L24R	18.0	33.0	61.0	290	2400A MLO	Extrap.
	RMM_L12RFTL	12.0	29.0	61.0	220	1200A MLO FT	Extrap.
	RMM_L16RFTL	18.0	33.0	61.0	310	1600A MLO FT	Extrap.
	RMM_L20RFTL	18.0	33.0	61.0	310	2000A MLO FT	Extrap.
RMM_L24RFTL	18.0	33.0	61.0	325	2400A MLO FT	Extrap.	
Main-Module (Breakers)	RMM_BL4R	11.2	20.1	48.0	140	400A MCB	Extrap.
	RMM_BH4R	11.2	20.1	48.0	140		Extrap.
	RMM_BL6R	11.2	20.1	48.0	140	600A MCB	Extrap.
	RMM_BH6R	11.2	20.1	48.0	140		Extrap.
	RMM_BL8R	11.2	20.1	48.0	160	800A MCB	Extrap.
	RMM_BH8R	11.2	20.1	48.0	160		Extrap.
	RMM_BL10R	11.2	20.1	48.0	180	1000A MCB	Extrap.
	RMM_BH10R	11.2	20.1	48.0	180		Extrap.
	RMM_BL12R	11.2	20.1	48.0	180	1200A MCB	Extrap.
	RMM_BH12R	11.2	20.1	48.0	180		Extrap.
RMM_BEL4R	11.3	20.1	60.5	215	400A MCB EUSERC	Interp.	
RMM_BEH4R	11.3	20.1	60.5	215		Interp.	

Notes:
 1. Lugs are depopulated version of breakers

SPECIAL SEISMIC CERTIFICATION CERTIFIED COMPONENT MATRIX

2100749-CR-001-R1



Manufacturer: ABB Industrial Solutions	TABLE 1
Model Line: RELIAMOD	

Certified Product Construction Summary:
 Lug Modules: 16 ga, 12 ga & 10 ga Carbon Steel Enclosure
 Main-Breaker Modules: 16ga, 14 ga, 12 ga & 10 ga Carbon Steel Enclosure
 Switch Modules: 16 ga, 14 ga, 12 ga & 10 ga Carbon Steel Enclosure

Certified Options Summary:
 Lug Modules: 400A to 2400A, 1PH/3W & 3PH/4W, 100kA IC Rating
 Main-Breaker Modules: 400A to 2000A, 1PH/3W & 3PH/4W, 65kA to 100kA IC Rating, with and without Integral Pullbox
 Switch Modules: 400A to 800A, 1PH/3W & 3PH/4W, 100kA IC Rating, with and without Integral Pullbox

Mounting Configuration:
 Wall mounted - rigid
 Note: Installed mounting must be of similar configuration and equivalent strength and stiffness to those tested.

Building Code: CBC 2022 **Seismic Certification Limits:** $S_{DS} = 2.0g$ $z/h = 1.0$ $I_p = 1.5$
 $S_{DS} = 2.5g$ $z/h = 0.0$

Model Line	Model	Dimensions (in)			Weight (lbs.)	Notes	UUT
		Depth	Width	Height			
Main-Module (Breakers)	RMM_BEL6R	11.3	25.0	60.5	232	600A MCB EUSERC	Interp.
	RMM_BEH6R	11.3	25.0	60.5	232		Interp.
	RMM3BEH6R	11.3	25.0	60.5	232	600A MCB w/ integrated pull-box	2a
	RMM_BEL8R	11.3	25.0	60.5	260	800A MCB EUSERC	Extrap.
	RMM_BEH8R	11.3	25.0	60.5	260		Extrap.
	RMM_BEL10R	12.0	33.4	60.5	330	1000A MCB EUSERC	Extrap.
	RMM_BEH10R	12.0	33.4	60.5	330		Extrap.
	RMM_BEL12R	12.0	33.4	60.5	330	1200A MCB EUSERC	Extrap.
	RMM_BEH12R	12.0	33.4	60.5	330		Extrap.
	RMM_BB14R	15.0	25.0	57.0	500	1400A Bottom Feed	Extrap.
	RMM_BB16R	15.0	25.0	57.0	500	1600A Bottom Feed	Extrap.
	RMM_BT14R	15.0	25.0	59.0	510	1400A Top Feed	Extrap.
	RMM_BT16R	15.0	25.0	59.0	510	1600A Top Feed	Extrap.
	RMM_BB14RL	24.0	38.0	60.5	750	1400A Bottom feed - 6 ports	Extrap.
	RMM_BB16RL	24.0	38.0	60.5	750	1600A Bottom feed - 6 ports	Extrap.
	RMM_BB20RL	24.0	38.0	60.5	750	2000A Bottom feed - 6 ports	Extrap.
	RMM_BT14RL	24.0	38.0	60.5	750	1400A Top feed - 6 ports	Extrap.
	RMM_BT16RL	24.0	38.0	60.5	750	1600A Top feed - 6 ports	Extrap.
	RMM_BT20RL	24.0	38.0	60.5	750	2000A Top feed - 6 ports	Extrap.
	RMM_BB14RCLL	24.0	38.0	60.5	798	1400A Comp Lug	Interp.
RMM_BB16RCLL	24.0	38.0	60.5	798	1600A Comp Lug	Interp.	
RMM3BB16RCLL	24.0	38.0	60.5	798	1600A Breaker Comp Lug	1a	
RMM_BB20RCLL	24.0	38.0	60.5	798	2000A Comp Lug	Interp.	

SPECIAL SEISMIC CERTIFICATION CERTIFIED COMPONENT MATRIX

2100749-CR-001-R1



Manufacturer: ABB Industrial Solutions	TABLE 1
Model Line: RELIAMOD	

Certified Product Construction Summary:
 Lug Modules: 16 ga, 12 ga & 10 ga Carbon Steel Enclosure
 Main-Breaker Modules: 16ga, 14 ga, 12 ga & 10 ga Carbon Steel Enclosure
 Switch Modules: 16 ga, 14 ga, 12 ga & 10 ga Carbon Steel Enclosure

Certified Options Summary:
 Lug Modules: 400A to 2400A, 1PH/3W & 3PH/4W, 100kA IC Rating
 Main-Breaker Modules: 400A to 2000A, 1PH/3W & 3PH/4W, 65kA to 100kA IC Rating, with and without Integral Pullbox
 Switch Modules: 400A to 800A, 1PH/3W & 3PH/4W, 100kA IC Rating, with and without Integral Pullbox

Mounting Configuration:
 Wall mounted - rigid
 Note: Installed mounting must be of similar configuration and equivalent strength and stiffness to those tested.

Building Code: CBC 2022 **Seismic Certification Limits:** $S_{DS} = 2.0 g$ $z/h=1.0$ $I_p = 1.5$
 $S_{DS} = 2.5 g$ $z/h=0.0$

Model Line	Model	Dimensions (in)			Weight (lbs.)	Notes	UUT
		Depth	Width	Height			
Main-Module (Switches)	RMM_F4R	11.2	20.1	48.0	160	400A MFS	Interp.
	RMM_F6R	12.7	20.1	55.0	235	600A MFS	Interp.
	RMM_F8R	12.7	20.1	55.0	265	800A MFS	Interp.
	RMM_F4RCLL	11.2	20.1	60.7	240	400A EUSERC MFS	Interp.
	RMM_F6RCLL	12.8	24.5	65.0	310	600A EUSERC MFS	Interp.
	RMM_F8RCLL	12.8	24.5	65.0	350	800A EUSERC MFS	Interp.
	RMM3FE8RCLL	12.8	24.5	65.0	350	800A MFS w/ integrated pull-box	3a

SPECIAL SEISMIC CERTIFICATION CERTIFIED COMPONENT MATRIX

2100749-CR-001-R1



Manufacturer: ABB Industrial Solutions	TABLE 2
Model Line: RELIAMOD	

Certified Product Construction Summary:
14 ga, 15 ga & 16 ga Carbon Steel Enclosure

Certified Options Summary:
Cold-Metering: 125A & 225A Socket, 1 to 6 stack, 4, 5 & 7 Jaw Ring-type Socket, 22kA to 100kA IC Rating, 800A 1PH/3PH & 1200A 1PH/3PH Hor. Busway Amp.
Hot-Metering Std.: 125A & 225A Socket, 2 to 6 stack, 4 Jaw Ring-type, 5 Jaw Ringless, 5 Jaw Ringless + Horn bypass Socket, 22kA to 100kA IC Rating, 800A 1PH/3PH & 1200A 1PH/3PH Hor. Busway Amp.
Hot-Metering Lever Bypass: 225A & 400A Socket, 1 to 4 stack, 5 & 7 Jaw Ringless Socket, 65kA to 100kA IC Rating, 800A 1PH/3PH & 1200A 1ph/3PH Hor. Busway Amp.

Mounting Configuration:
Wall mounted - rigid
Note: Installed mounting must be of similar configuration and equivalent strength and stiffness to those tested.

Building Code: CBC 2022 **Seismic Certification Limits:** $S_{DS} = 2.0g$ $z/h = 1.0$ $I_p = 1.5$
 $S_{DS} = 2.5g$ $z/h = 0.0$

Model Line	Model	Dimensions (in)			Weight (lbs.)	Notes	UUT
		Depth	Width	Height			
Meter-Module (Hot-Metering Std.)	RMS__212H_	9.8	13.8	45.3	110	125A HOT, 100kA IC	Extrap.
	RMS__312H_	9.8	13.8	45.3	115		Extrap.
	RMS__412H_	9.8	13.8	54.3	135		Extrap.
	RMS__512H_	9.8	13.8	63.3	155		Extrap.
	RMS__612H_	9.8	13.8	72.3	175		Extrap.
	RMS__212L_	9.0	13.3	46.5	103	125A HOT, 22kA IC	Interp.
	RMS__312L_	9.0	13.3	46.5	108		Interp.
	RMS__412L_	9.0	13.3	55.5	123		Interp.
	RMS__512L_	9.0	13.3	64.5	138		Interp.
	RMS__612L_	9.0	13.3	73.5	154		Interp.
	RMS212612LRLR	9.0	13.3	70.5	151		2c
	RMS__222H_	9.5	18.0	58.0	185	225A HOT, 100kA IC	Interp.
	RMS__322H_	9.5	18.0	58.0	190		Interp.
	RMS__422H_	9.5	18.0	70.0	225		Interp.
	RMS__522H_	9.5	18.0	82.0	254		Interp.
	RMS212522HRLR	9.5	18.0	82.0	254		3c
	RMS__222L_	9.5	18.0	60.0	180	225A HOT, 22kA IC	Extrap.
	RMS__322L_	9.5	18.0	60.0	185		Extrap.
	RMS__422L_	9.5	18.0	72.0	220		Extrap.
	RMS__522L_	9.5	18.0	84.0	250		Extrap.

SPECIAL SEISMIC CERTIFICATION CERTIFIED COMPONENT MATRIX

2100749-CR-001-R1



Manufacturer: ABB Industrial Solutions	TABLE 2
Model Line: RELIAMOD	

Certified Product Construction Summary:
14 ga, 15 ga & 16 ga Carbon Steel Enclosure

Certified Options Summary:
Cold-Metering: 125A & 225A Socket, 1 to 6 stack, 4, 5 & 7 Jaw Ring-type Socket, 22kA to 100kA IC Rating, 800A 1PH/3PH & 1200A 1PH/3PH Hor. Busway Amp.
Hot-Metering Std.: 125A & 225A Socket, 2 to 6 stack, 4 Jaw Ring-type, 5 Jaw Ringless, 5 Jaw Ringless + Horn bypass Socket, 22kA to 100kA IC Rating, 800A 1PH/3PH & 1200A 1PH/3PH Hor. Busway Amp.
Hot-Metering Lever Bypass: 225A & 400A Socket, 1 to 4 stack, 5 & 7 Jaw Ringless Socket, 65kA to 100kA IC Rating, 800A 1PH/3PH & 1200A 1ph/3PH Hor. Busway Amp.

Mounting Configuration:
Wall mounted - rigid
Note: Installed mounting must be of similar configuration and equivalent strength and stiffness to those tested.

Building Code: CBC 2022 **Seismic Certification Limits:** $S_{DS} = 2.0g$ $z/h = 1.0$ $I_p = 1.5$
 $S_{DS} = 2.5g$ $z/h = 0.0$

Model Line	Model	Dimensions (in)			Weight (lbs.)	Notes	UUT
		Depth	Width	Height			
Meter-Module (Hot-Metering Lever Bypass)	RMS__122CHLB_	10.0	19.4	51.1	170	225A HOT, 100kA IC	Interp.
	RMS__222CHLB_	10.0	19.4	51.1	200		Interp.
	RMS__322CHLB_	10.0	19.4	68.1	255		Interp.
	RMS__422CHLB_	10.0	19.4	82.3	304		Interp.
	RMS312422CHLBR	10.0	19.4	82.3	304	400A HOT, 65kA IC	1c
	RMS__140CHLBRB	11.1	23.1	42.3	180		Extrap.
	RMS__240CHLBRB	11.1	23.1	70.3	270		Extrap.
	RMS__140CHLBR	11.1	19.9	51.1	195		400A HOT, 100kA IC
Meter-Module (Cold-Metering)	RMSC__312H_	9.1	14.0	45.3	115	125A HOT, 100kA IC	Extrap.
	RMSC__412H_	9.1	14.0	54.5	135		Extrap.
	RMSC__612H_	9.1	14.0	72.5	170		Extrap.
	RMSC__312L_	8.0	13.3	45.3	100	125A HOT, 22kA IC	Extrap.
	RMSC__612L_	8.0	13.3	72.5	145		Extrap.
	RMSC__122H_	9.1	18.1	34.0	130	225A HOT, 100kA IC	Extrap.
	RMSC__322H_	9.1	18.1	58.0	190		Extrap.
	RMSC__422H_	9.1	18.1	70.0	215		Extrap.
	RMSC__122L_	9.1	18.1	32.0	125	225A HOT, 22kA IC	Extrap.
	RMSC__322L_	9.1	18.1	56.0	175		Extrap.

SPECIAL SEISMIC CERTIFICATION CERTIFIED COMPONENT MATRIX

2100749-CR-001-R1



Manufacturer: ABB Industrial Solutions	Table Description: Accessories	TABLE 3
Model Line: RELIAMOD		

Building Code: CBC 2022 **Seismic Certification Limits:** $S_{DS} = 2.0g$ $z/h = 1.0$ $I_p = 1.5$
 $S_{DS} = 2.5g$ $z/h = 0.0$

Model Line (Manufacturer)	Model	Dimension (in)			Weight (lbs.)	Material	Notes	UUT
		Depth	Width	Height				
SPD ¹ (ABB)	RMM_1SURGE	10.0	15.0	25.0	76	16 ga Carbon Steel Enclosure	130kA IC	Interp.
	RMM_2SURGE	12.8	15.0	25.0	83		200kA IC	Interp.
	RMM_3SURGE	12.8	15.0	25.0	83		300kA IC	Interp.
	RMM33SURGE	12.8	15.0	25.0	83		300kA IC	1b
Pull-Box ² (ABB)	RMM_P4R	7.6	16.8	43.0	80	16 ga Carbon Steel Enclosure	400A	Interp.
	RMM_P8R	11.7	25.0	50.2	140		800A	Interp.
	RMM_P12R	11.8	33.0	54.4	180		1200A	Interp.
Elbow ¹ (ABB)	RELBOW312N3R	5.3	12.0	25.0	64	16 ga Carbon Steel Enclosure	12"	2b
	RELBOW316N3R	5.3	16.0	25.0	84		16"	3b
Spacer ¹ (ABB)	RSPACER3127	7.0	5.3	25.0	40	16 ga Carbon Steel Enclosure		Interp.
Adapter ¹ (ABB)	RADAPTOR312LEFT	7.0	6.0	30.0	45	16 ga Carbon Steel Enclosure	Adapter (Left)	Interp.
	RADAPTOR312RIGHT	7.0	6.0	30.0	45		Adapter (Right)	Interp.

Notes:
1. SPDs, Spacers, and Adapters are interpolated based on the 300kA SPD tested in UUT1b and the Elbows tested in UUT2b and UUT3b. All of these accessories use similar construction and mounting. The 300kA SPD is the heaviest accessory and the Elbows are the most seismically vulnerable.
2. The Pull-Boxes are not modular and are attached individually to the walls. They are interpolated based on the modular Pull-Boxes integrated into the tested Main-Modules (Table 1). The modular Pull-Boxes are heavier, larger, and more seismically vulnerable.

SPECIAL SEISMIC CERTIFICATION CERTIFIED SUBCOMPONENT MATRIX

2100749-CR-001-R1



Manufacturer: ABB Industrial Solutions	Table Description: Beakers and Switches	TABLE 4
Model Line: RELIAMOD		

Building Code: CBC 2022 **Seismic Certification Limits:** $S_{DS} = 2.0 g$ $z/h = 1.0$ $I_p = 1.5$
 $S_{DS} = 2.5 g$ $z/h = 0.0$

Component Type	Manufacturer	Model	Description	Notes	UUT	
Breaker	ABB	THQL	Breakers with Load Connectors	Weight: 1 lbs.	2c	
		TEY		Weight: 2 lbs.	Interp.	
		A1		Weight: 1.5 lbs.	Interp.	
		A2		Weight: 2 lbs.	Interp.	
		XT3		Weight: 7 lbs.	3c	
		XT4		Weight: 9 lbs.	3c	
		XT5		Breaker with Load or Line Connectors	Weight: 12 lbs.	Interp.
		XT6		Breakers with Line Connectors	Weight: 27 lbs.	2a
		XT7			Weight: 66 lbs.	3a
T8	Weight: 160 lbs.	1a				
Switches	ABB	XT5	Switches	400A	Interp.	
		XT6		600A	2a	
		XT7		800A	3a	

UNIT UNDER TEST (UUT) SUMMARY SHEET

2100749-CR-001-R1



Manufacturer: ABB Industrial Solutions

Model Line: RELIAMOD

UUT	Unit Description	Report Number	Testing Lab	Year Tested	ISO 17025 Accredited?	S _{DS}	z/h	I _P
1a	RMM3BB16RCLL (1600A Breaker Comp Lug)	2100749-TR-001	Environmental Testing Lab (ETL)	2022	Yes	2.0 2.5	1.0 0.0	1.5
1b	RMM33SURGE (300kA SPD)	2100749-TR-001	Environmental Testing Lab (ETL)	2022	Yes	2.0 2.5	1.0 0.0	1.5
1c	RMS312422CHLBR (225A XT LVBP, hot-metering, 4-gang)	2100749-TR-001	Environmental Testing Lab (ETL)	2022	Yes	2.0 2.5	1.0 0.0	1.5
2a	RMM3BEH6R (600A MCB w/ integrated pull-box)	2100749-TR-001	Environmental Testing Lab (ETL)	2022	Yes	2.0 2.5	1.0 0.0	1.5
2b	RELBOW312N3R (12-inch elbow)	2100749-TR-001	Environmental Testing Lab (ETL)	2022	Yes	2.0 2.5	1.0 0.0	1.5
2c	RMS212612LRRLR (THQL, hot-metering, 6-gang)	2100749-TR-001	Environmental Testing Lab (ETL)	2022	Yes	2.0 2.5	1.0 0.0	1.5
3a	RMM3FE8RCLL (800A MFS w/ integrated pull-box)	2100749-TR-001	Environmental Testing Lab (ETL)	2022	Yes	2.0 2.5	1.0 0.0	1.5
3b	RELBOW316N3R (16-inch elbow)	2100749-TR-001	Environmental Testing Lab (ETL)	2022	Yes	2.0 2.5	1.0 0.0	1.5
3c	RMS212522HRLR (225A XT, hot-metering, 5-gang)	2100749-TR-001	Environmental Testing Lab (ETL)	2022	Yes	2.0 2.5	1.0 0.0	1.5

Notes:

UNIT UNDER TEST (UUT) SUMMARY SHEET

2100749-CR-001-R1



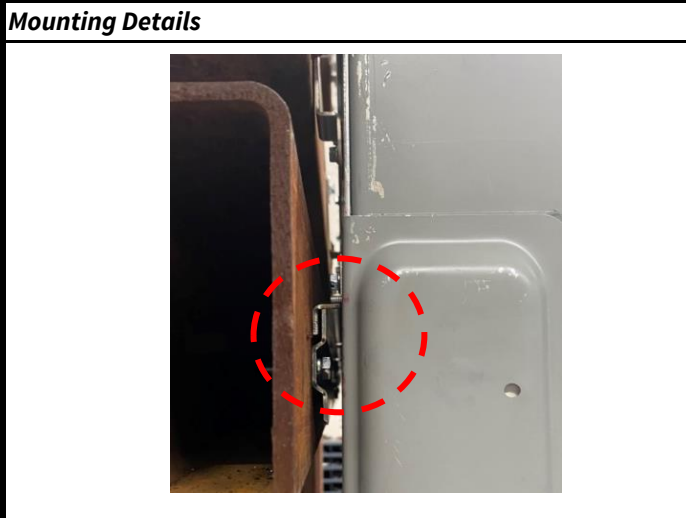
Manufacturer:	ABB Industrial Solutions	UUT 1a
Model Line:	RELIAMOD	
Model Number:	RMM3BB16RCLL (1600A Breaker Comp Lug)	
Serial Number:	N/A	
Test Report:		2100749-TR-001

UUT Properties						
Weight (lbs.)	Dimension (in)			Lowest Natural Frequency (Hz)		
	Depth	Width	Height	Front-Back	Side-Side	Vertical
798	24.0	38.0	60.5	N/A	N/A	N/A

UUT Highest Passed Seismic Run Information								
Building Code	Test Criteria	S _{DS} (g)	z/h	I _P	A _{FLX-H} (g)	A _{RIG-H} (g)	A _{FLX-V} (g)	A _{RIG-V} (g)
CBC 2022	ICC-ES AC156	2.0	1.0	1.5	3.20	2.40	1.67	0.67
		2.5	0.0					

Product Construction Summary:	Test Mounting Details:
Main-Breaker Modules: 12 ga Carbon Steel Enclosure and 10 ga Carbon Steel Cover; 3-PHASE	

Options/Subcomponent Summary:		
Description	Mfr.	Part Number
Breaker	ABB	T8



UUT1 was wall mounted - rigid to a wall fixture. The mounting brackets (1 large [Serial No.: 2100303422P7] and 2 Small [Serial No.: 2100303422P3]) were mounted to the wall fixture using twelve (12) 5/16" Grade 5 bolts and lock washers. UUT1a was mounted to the wall fixture using six (6) Grade 5 bolts, flat and lock washers. Unit maintained structural integrity and remained functional per manufacturer requirement after shake table test. Contents were included in testing per operating conditions.

UNIT UNDER TEST (UUT) SUMMARY SHEET

2100749-CR-001-R1



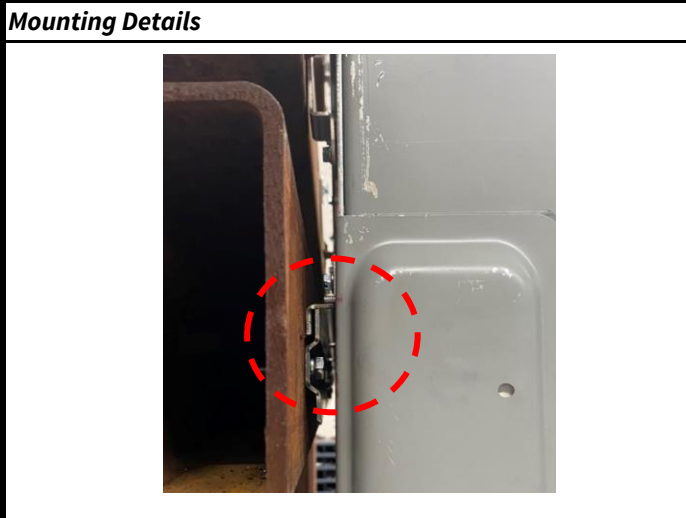
Manufacturer: ABB Industrial Solutions	UUT 1b
Model Line: RELIAMOD	
Model Number: RMM33SURGE (300kA SPD)	
Serial Number: N/A	
Test Report: 2100749-TR-001	

UUT Properties						
Weight (lbs.)	Dimension (in)			Lowest Natural Frequency (Hz)		
	Depth	Width	Height	Front-Back	Side-Side	Vertical
83	12.8	15.0	25.0	N/A	N/A	N/A

UUT Highest Passed Seismic Run Information								
Building Code	Test Criteria	S _{DS} (g)	z/h	I _P	A _{FLX-H} (g)	A _{RIG-H} (g)	A _{FLX-V} (g)	A _{RIG-V} (g)
CBC 2022	ICC-ES AC156	2.0	1.0	1.5	3.20	2.40	1.67	0.67
		2.5	0.0					

Product Construction Summary: 16 ga Carbon Steel Enclosure and Cover; 3-PHASE	Test Mounting Details:
---	-------------------------------

Options/Subcomponent Summary:	
Description	Part Number
N/A	N/A



UUT1 was wall mounted - rigid to a wall fixture. The mounting brackets (1 large [Serial No.: 2100303422P7] and 2 Small [Serial No.: 2100303422P3]) were mounted to the wall fixture using twelve (12) 5/16" Grade 5 bolts and lock washers.

UUT1b was mounted to the wall fixture using four (4) Grade 5 bolts, flat and lock washers.

Unit maintained structural integrity and remained functional per manufacturer requirement after shake table test. Contents were included in testing per operating conditions.

UNIT UNDER TEST (UUT) SUMMARY SHEET

2100749-CR-001-R1



Manufacturer:	ABB Industrial Solutions	UUT 1c
Model Line:	RELIAMOD	
Model Number:	RMS312422CHLBR (225A XT LVBP, hot-metering, 4-gang)	
Serial Number:	N/A	
Test Report:		2100749-TR-001

UUT Properties

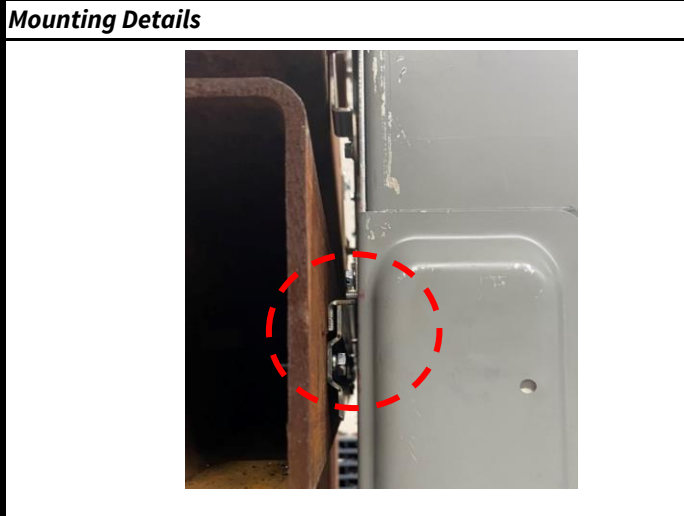
Weight (lbs.)	Dimension (in)			Lowest Natural Frequency (Hz)		
	Depth	Width	Height	Front-Back	Side-Side	Vertical
304	10.0	19.4	82.3	N/A	N/A	N/A

UUT Highest Passed Seismic Run Information

Building Code	Test Criteria	S _{DS} (g)	z/h	I _P	A _{FLX-H} (g)	A _{RIG-H} (g)	A _{FLX-V} (g)	A _{RIG-V} (g)
CBC 2022	ICC-ES AC156	2.0	1.0	1.5	3.20	2.40	1.67	0.67
		2.5	0.0					

Product Construction Summary:	Test Mounting Details:
15 ga Carbon Steel Enclosure and 16 ga Carbon Steel Cover; 3-PHASE-IN, 3-PHASE-OUT	

Options/Subcomponent Summary:	
Description	Part Number
N/A	N/A



UUT1 was wall mounted - rigid to a wall fixture. The mounting brackets (1 large [Serial No.: 2100303422P7] and 2 Small [Serial No.: 2100303422P3]) were mounted to the wall fixture using twelve (12) 5/16" Grade 5 bolts and lock washers.

UUT1c was mounted to the wall fixture using four (4) Grade 5 bolts, flat and lock washers.

Unit maintained structural integrity and remained functional per manufacturer requirement after shake table test. Contents were included in testing per operating conditions.

UNIT UNDER TEST (UUT) SUMMARY SHEET

2100749-CR-001-R1



Manufacturer:	ABB Industrial Solutions	UUT 2a
Model Line:	RELIAMOD	
Model Number:	RMM3BEH6R (600A MCB w/ integrated pull-box)	
Serial Number:	N/A	
Test Report:		2100749-TR-001

UUT Properties						
Weight (lbs.)	Dimension (in)			Lowest Natural Frequency (Hz)		
	Depth	Width	Height	Front-Back	Side-Side	Vertical
232	11.3	25.0	60.5	N/A	N/A	N/A

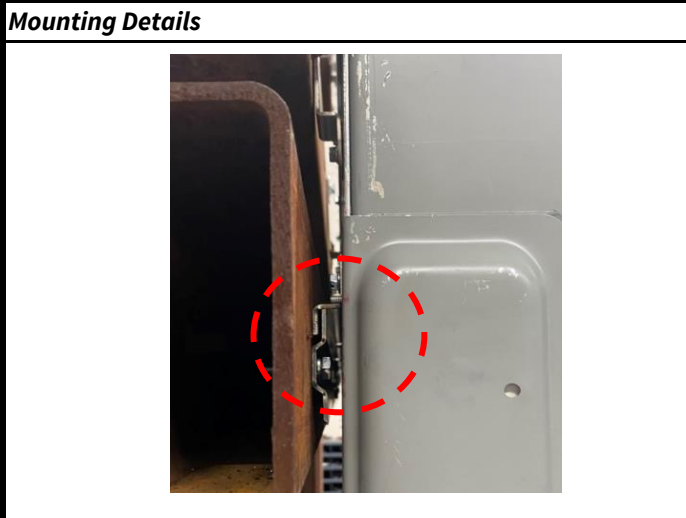
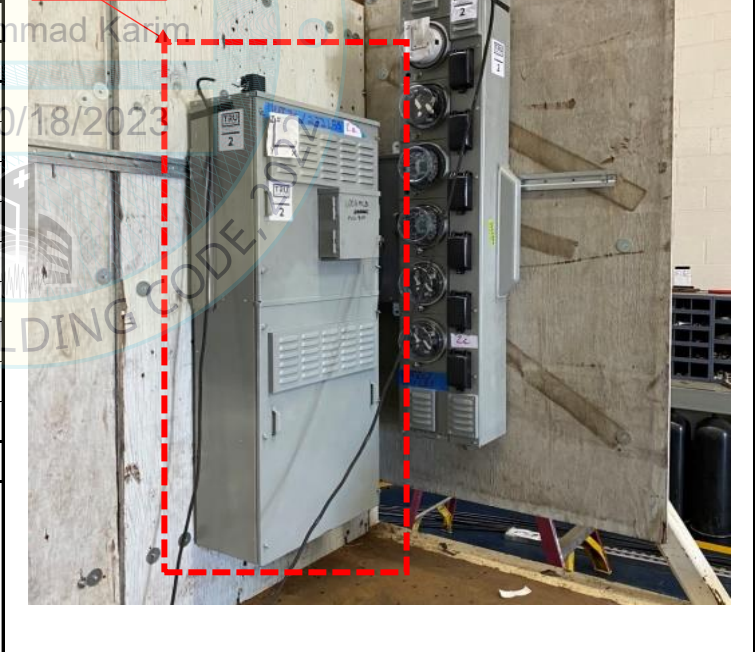
UUT Highest Passed Seismic Run Information								
Building Code	Test Criteria	S _{DS} (g)	z/h	I _P	A _{FLX-H} (g)	A _{RIG-H} (g)	A _{FLX-V} (g)	A _{RIG-V} (g)
CBC 2022	ICC-ES AC156	2.0	1.0	1.5	3.20	2.40	1.67	0.67
		2.5	0.0					

Product Construction Summary:
Main-Breaker Modules: 14 ga Carbon Steel Enclosure and 10 ga Carbon Steel Cover; 3-PHASE

Test Mounting Details:

Options/Subcomponent Summary:

Description	Mfr.	Part Number
Breaker	ABB	XT6
Switches	ABB	XT6



UUT2 was wall mounted - rigid to a wall fixture. The mounting brackets (2 large [Serial No.: 2100303422P7]) were mounted to the wall fixture using eleven (11) 5/16" Grade 5 bolts and lock washers. UUT2a was mounted to the wall fixture using four (4) Grade 5 bolts, flat and lock washers. Unit maintained structural integrity and remained functional per manufacturer requirement after shake table test. Contents were included in testing per operating conditions.

UNIT UNDER TEST (UUT) SUMMARY SHEET

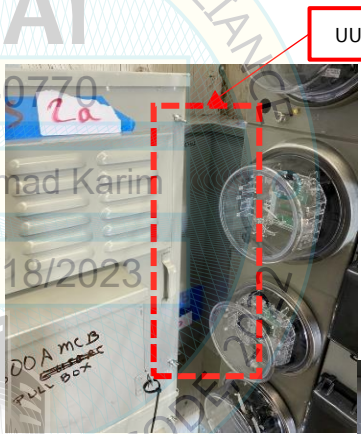
2100749-CR-001-R1



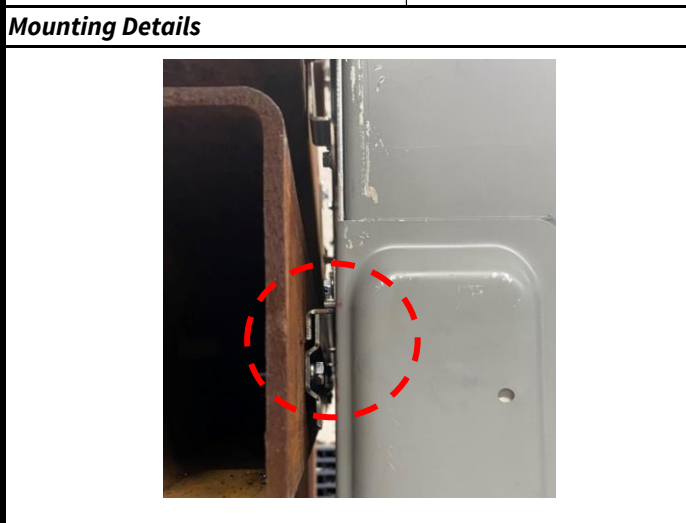
Manufacturer: ABB Industrial Solutions	UUT 2b
Model Line: RELIAMOD	
Model Number: RELBOW312N3R (12-inch elbow)	
Serial Number: N/A	
Test Report: 2100749-TR-001	

UUT Properties						
Weight (lbs.)	Dimension (in)			Lowest Natural Frequency (Hz)		
	Depth	Width	Height	Front-Back	Side-Side	Vertical
64	5.3	12.0	25.0	N/A	N/A	N/A


UUT Highest Passed Seismic Run Information								
Building Code	Test Criteria	S _{DS} (g)	z/h	I _P	A _{FLX-H} (g)	A _{RIG-H} (g)	A _{FLX-V} (g)	A _{RIG-V} (g)
CBC 2022	ICC-ES AC156	2.0	1.0	1.5	3.20	2.40	1.67	0.67
		2.5	0.0					

Product Construction Summary: 16 ga Carbon Steel Enclosure and Cover; 3-PHASE	Test Mounting Details: 
---	--

Options/Subcomponent Summary:	
Description	Part Number
N/A	N/A



UUT2 was wall mounted - rigid to a wall fixture. The mounting brackets (2 large [Serial No.: 2100303422P7]) were mounted to the wall fixture using eleven (11) 5/16" Grade 5 bolts and lock washers. UUT2b was mounted to the wall fixture using four (4) Grade 5 bolts, flat and lock washers. Unit maintained structural integrity and remained functional per manufacturer requirement after shake table test. Contents were included in testing per operating conditions.



UNIT UNDER TEST (UUT) SUMMARY SHEET

2100749-CR-001-R1



Manufacturer:	ABB Industrial Solutions	UUT 2c
Model Line:	RELIAMOD	
Model Number:	RMS212612LRLR (THQL, hot-metering, 6-gang)	
Serial Number:	N/A	
Test Report:		2100749-TR-001

UUT Properties

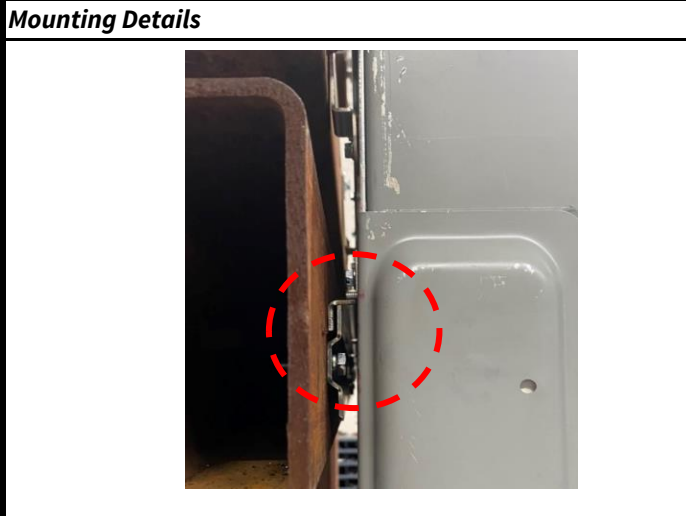
Weight (lbs.)	Dimension (in)			Lowest Natural Frequency (Hz)		
	Depth	Width	Height	Front-Back	Side-Side	Vertical
151	9.0	13.3	70.5	N/A	N/A	N/A

UUT Highest Passed Seismic Run Information

Building Code	Test Criteria	S _{DS} (g)	z/h	I _P	A _{FLX-H} (g)	A _{RIG-H} (g)	A _{FLX-V} (g)	A _{RIG-V} (g)
CBC 2022	ICC-ES AC156	2.0	1.0	1.5	3.20	2.40	1.67	0.67
		2.5	0.0					

Product Construction Summary:	Test Mounting Details:
16 ga Carbon Steel Enclosure and Cover; 3-PHASE-IN, 1-PHASE-OUT	

Options/Subcomponent Summary:		
Description	Mfr.	Part Number
Breaker	ABB	THQL



UUT2 was wall mounted - rigid to a wall fixture. The mounting brackets (2 large [Serial No.: 2100303422P7]) were mounted to the wall fixture using eleven (11) 5/16" Grade 5 bolts and lock washers. UUT2c was mounted to the wall fixture using two (2) Grade 5 bolts, flat and lock washers. Unit maintained structural integrity and remained functional per manufacturer requirement after shake table test. Contents were included in testing per operating conditions.

UNIT UNDER TEST (UUT) SUMMARY SHEET

2100749-CR-001-R1



Manufacturer:	ABB Industrial Solutions	UUT 3a
Model Line:	RELIAMOD	
Model Number:	RMM3FE8RCLL (800A MFS w/ integrated pull-box)	
Serial Number:	N/A	
Test Report:		2100749-TR-001

UUT Properties						
Weight (lbs.)	Dimension (in)			Lowest Natural Frequency (Hz)		
	Depth	Width	Height	Front-Back	Side-Side	Vertical
350	12.8	24.5	65.0	N/A	N/A	N/A

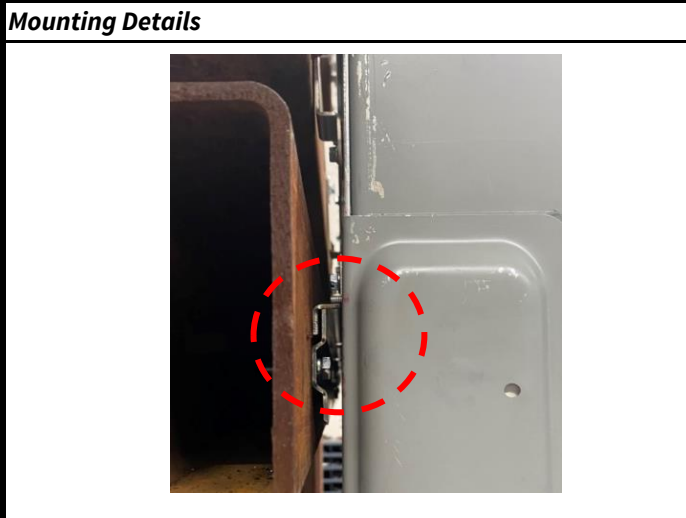
UUT Highest Passed Seismic Run Information								
Building Code	Test Criteria	S _{DS} (g)	z/h	I _P	A _{FLX-H} (g)	A _{RIG-H} (g)	A _{FLX-V} (g)	A _{RIG-V} (g)
CBC 2022	ICC-ES AC156	2.0	1.0	1.5	3.20	2.40	1.67	0.67
		2.5	0.0					

Product Construction Summary:
Main-Breaker Modules: 14 ga Carbon Steel Enclosure and 10 ga Carbon Steel Cover; 3-PHASE



Options/Subcomponent Summary:

Description	Mfr.	Part Number
Breaker	ABB	XT7
Switches	ABB	XT7



UUT3 was wall mounted - rigid to a wall fixture. The mounting brackets (2 large [Serial No.: 2100303422P7]) were mounted to the wall fixture using eleven (11) 5/16" Grade 5 bolts and lock washers. UUT3a was mounted to the wall fixture using four (4) Grade 5 bolts, flat and lock washers. Unit maintained structural integrity and remained functional per manufacturer requirement after shake table test. Contents were included in testing per operating conditions.

UNIT UNDER TEST (UUT) SUMMARY SHEET

2100749-CR-001-R1



Manufacturer: ABB Industrial Solutions	UUT 3b
Model Line: RELIAMOD	
Model Number: RELBOW316N3R (16-inch elbow)	
Serial Number: N/A	
Test Report: 2100749-TR-001	

UUT Properties						
Weight (lbs.)	Dimension (in)			Lowest Natural Frequency (Hz)		
	Depth	Width	Height	Front-Back	Side-Side	Vertical
84	5.3	16.0	25.0	N/A	N/A	N/A

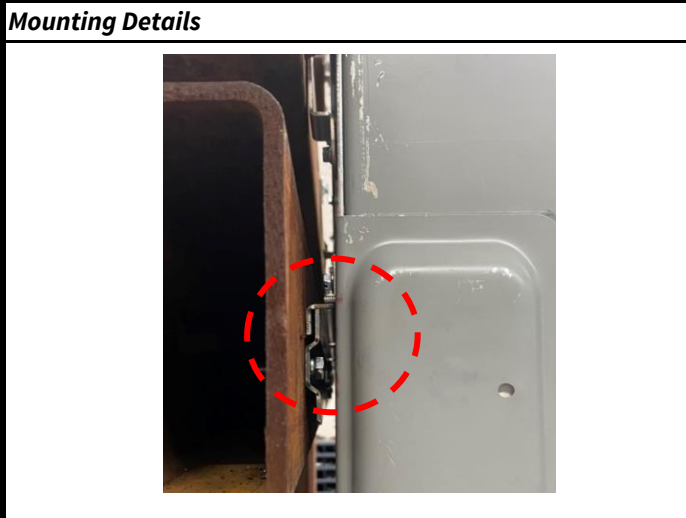
UUT Highest Passed Seismic Run Information								
Building Code	Test Criteria	S _{DS} (g)	z/h	I _p	A _{FLX-H} (g)	A _{RIG-H} (g)	A _{FLX-V} (g)	A _{RIG-V} (g)
CBC 2022	ICC-ES AC156	2.0	1.0	1.5	3.20	2.40	1.67	0.67
		2.5	0.0					

Product Construction Summary:
16 ga Carbon Steel Enclosure and Cover; 3-PHASE

Test Mounting Details:

Options/Subcomponent Summary:

Description	Part Number
N/A	N/A



UUT3 was wall mounted - rigid to a wall fixture. The mounting brackets (2 large [Serial No.: 2100303422P7]) were mounted to the wall fixture using eleven (11) 5/16" Grade 5 bolts and lock washers. UUT3b was mounted to the wall fixture using four (4) Grade 5 bolts, flat and lock washers. Unit maintained structural integrity and remained functional per manufacturer requirement after shake table test. Contents were included in testing per operating conditions.

UNIT UNDER TEST (UUT) SUMMARY SHEET

2100749-CR-001-R1



Manufacturer:	ABB Industrial Solutions	UUT 3c
Model Line:	RELIAMOD	
Model Number:	RMS212522HRLR (225A XT, hot-metering, 5-gang)	
Serial Number:	N/A	
Test Report:		2100749-TR-001

UUT Properties

Weight (lbs.)	Dimension (in)			Lowest Natural Frequency (Hz)		
	Depth	Width	Height	Front-Back	Side-Side	Vertical
254	9.5	18.0	82.0	N/A	N/A	N/A

UUT Highest Passed Seismic Run Information

Building Code	Test Criteria	S _{DS} (g)	z/h	I _P	A _{FLX-H} (g)	A _{RIG-H} (g)	A _{FLX-V} (g)	A _{RIG-V} (g)
CBC 2022	ICC-ES AC156	2.0	1.0	1.5	3.20	2.40	1.67	0.67
		2.5	0.0					

Product Construction Summary:	Test Mounting Details:
16 ga Carbon Steel Enclosure and Cover; 3-PHASE-IN, 1-PHASE-OUT	

Options/Subcomponent Summary:		
Description	Mfr.	Part Number
Breakers	ABB	XT3, XT4

Mounting Details	
<p>UUT3 was wall mounted - rigid to a wall fixture. The mounting brackets (2 large [Serial No.: 2100303422P7]) were mounted to the wall fixture using eleven (11) 5/16" Grade 5 bolts and lock washers. UUT3c was mounted to the wall fixture using four (4) Grade 5 bolts, flat and lock washers. Unit maintained structural integrity and remained functional per manufacturer requirement after shake table test. Contents were included in testing per operating conditions.</p>	<p>TRU Compliance, by Structural Integrity Associates, Inc. 844-TRU-0200 info@trucompliance.com</p>