



DEPARTMENT OF HEALTH CARE ACCESS AND INFORMATION
FACILITIES DEVELOPMENT DIVISION

APPLICATION FOR HCAI SPECIAL SEISMIC
CERTIFICATION PREAPPROVAL (OSP)

OFFICE USE ONLY

APPLICATION #: OSP-0771

HCAI Special Seismic Certification Preapproval (OSP)

Type: New Renewal

Manufacturer Information

Manufacturer: LS ELECTRIC CO., LTD.

Manufacturer's Technical Representative: Namki Lee

Mailing Address: LS Tower, 127, LS-ro, Dongan-gu, Anyang-si, Republic of Korea, Gyeonggi-, Do 14119

Telephone: (415) 508-8585

Email: nlee@ls-electric.com

Product Information

Product Name: Industrial Control Panels

Product Type: Variable Frequency Drives and Starters

Product Model Number: H100 VFD & SP100 VFD BYPASS

General Description: IP20/UL Open and UL Type 1 variable frequency drives with or without bypass.

Mounting Description: Rigid or Flexible, Wall Mounted

Tested Seismic Enhancements: None

Applicant Information

Applicant Company Name: Manwill Engineering LLC

Contact Person: Derek Manwill

Mailing Address: PO Box 1194, Bend, OR 97709

Telephone: (541) 241-2102

Email: derek@manwillse.com

Title: President

"A healthier California where all receive equitable, affordable, and quality healthcare"

STATE OF CALIFORNIA – HEALTH AND HUMAN SERVICES AGENCY





**DEPARTMENT OF HEALTH CARE ACCESS AND INFORMATION
FACILITIES DEVELOPMENT DIVISION**

California Licensed Structural Engineer Responsible for the Engineering and Test Report(s)

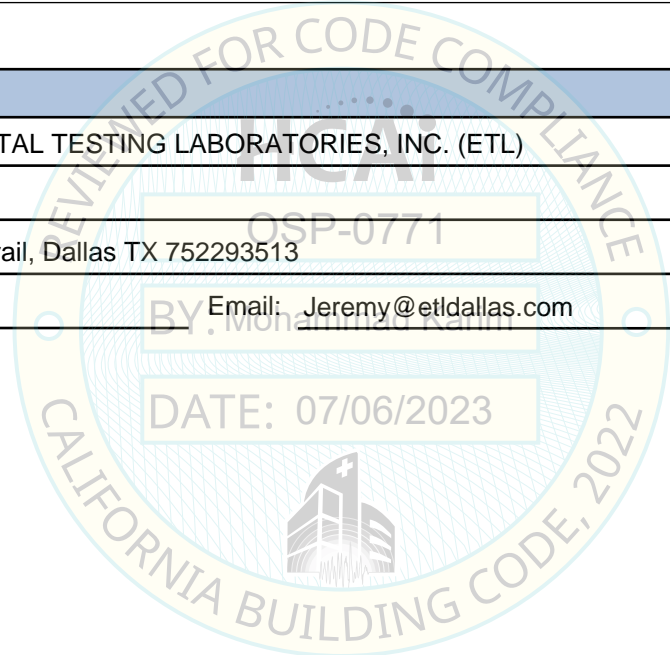
Company Name: MANWILL ENGINEERING LLC
Name: Derek Manwill California License Number: S6266
Mailing Address: PO Box 1194, Bend, OR 97709
Telephone: (541) 241-2102 Email: derek@manwillse.com

Certification Method

GR-63-Core ICC-ES AC156 IEEE 344 IEEE 693 NEBS 3
 Other (Please Specify): _____

Testing Laboratory

Company Name: ENVIRONMENTAL TESTING LABORATORIES, INC. (ETL)
Contact Person: Jeremy Lange
Mailing Address: 11034 Indian Trail, Dallas TX 752293513
Telephone: (972) 247-9657 Email: Jeremy@etldallas.com



"A healthier California where all receive equitable, affordable, and quality healthcare"

STATE OF CALIFORNIA – HEALTH AND HUMAN SERVICES AGENCY





**DEPARTMENT OF HEALTH CARE ACCESS AND INFORMATION
FACILITIES DEVELOPMENT DIVISION**

Seismic Parameters

Design Basis of Equipment or Components (F_p/W_p) = 4.50 (Flexible, SDS=2.0g, z/h=1), 1.13 (Rigid, SDS=2.5g, z/h=0)

SDS (Design spectral response acceleration at short period, g) = 2.00 (z/h=1), 2.50 (z/h=0)

a_p (Amplification factor) = 2.5

R_p (Response modification factor) = 2.0 (Flexible), 6.0 (Rigid)

Ω_0 (System overstrength factor) = 2.0

I_p (Importance factor) = 1.5

z/h (Height ratio factor) = 1 and 0

Natural frequencies (Hz) = See Attachment

Overall dimensions and weight = See Attachment

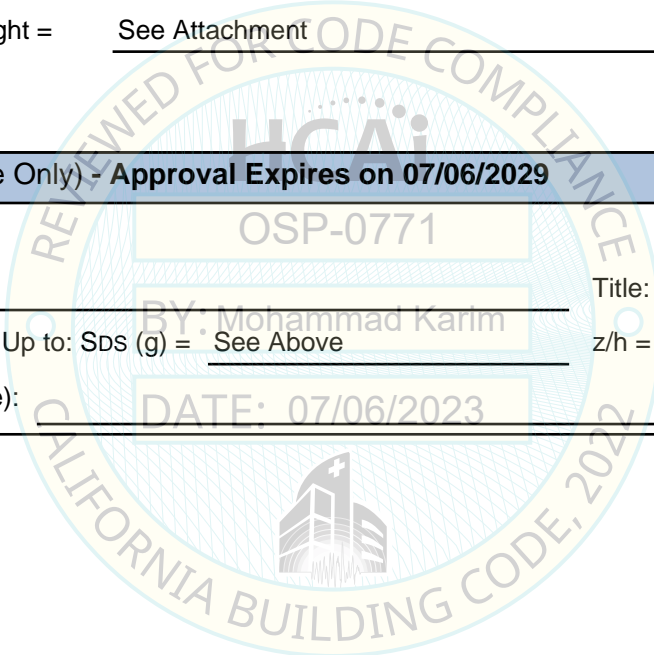
HCAI Approval (For Office Use Only) - Approval Expires on 07/06/2029

Date: 7/6/2023

Name: Mohammad Karim Title: Supervisor, Health Facilities

Special Seismic Certification Valid Up to: SDS (g) = See Above z/h = See Above

Condition of Approval (if applicable): DATE: 07/06/2023



"A healthier California where all receive equitable, affordable, and quality healthcare"



ATTACHMENT 1: CERTIFIED COMPONENTS

SPECIAL SEISMIC CERTIFICATION

TABLE 1

DOCUMENT NO.: 17101CR1.0

MANUFACTURER: LS ELECTRIC CO., LTD.						
PRODUCT FAMILY: H100 VFD & SP100 VFD BYPASS						
MODEL NUMBER	DIMENSIONS (in)			MAX. WT. (lb)	DESCRIPTION / NOTES	BASIS
	DEPTH	WIDTH	HEIGHT			
H100 VFD						
LSLV0008H100-2CENN	7.1	6.3	10.5	7.3	0.75kW, 200Vac, Type 1 Conduit	EXTRAP
LSLV0008H100-2CENN+FL	7.1	6.3	10.5	7.3	0.75kW, 200Vac, Type 1, Flange	EXTRAP
LSLV0008H100-2CONN	7.1	6.3	9.1	7.3	0.75kW, 200Vac, Open	EXTRAP
LSLV0008H100-2CONN+FL	7.1	6.3	9.1	7.3	0.75kW, 200Vac, Open, Flange	EXTRAP
LSLV0008H100-4CEFN	7.1	6.3	10.5	7.3	0.75kW, 400Vac, Type 1 Conduit	EXTRAP
LSLV0008H100-4CEFN+FL	7.1	6.3	10.5	7.3	0.75kW, 400Vac, Type 1, Flange	EXTRAP
LSLV0008H100-4COFN	7.1	6.3	9.1	7.3	0.75kW, 400Vac, Open	EXTRAP
LSLV0008H100-4COFN+FL	7.1	6.3	9.1	7.3	0.75kW, 400Vac, Open, Flange	EXTRAP
LSLV0015H100-2CENN	7.1	6.3	10.5	7.3	1.5kW, 200Vac, Type 1 Conduit	EXTRAP
LSLV0015H100-2CENN+FL	7.1	6.3	10.5	7.3	1.5kW, 200Vac, Type 1, Flange	EXTRAP
LSLV0015H100-2CONN	7.1	6.3	9.1	7.3	1.5kW, 200Vac, Open	EXTRAP
LSLV0015H100-2CONN+FL	7.1	6.3	9.1	7.3	1.5kW, 200Vac, Open, Flange	EXTRAP
LSLV0015H100-4CEFN	7.1	6.3	10.5	7.3	1.5kW, 400Vac, Type 1 Conduit	EXTRAP
LSLV0015H100-4CEFN+FL	7.1	6.3	10.5	7.3	1.5kW, 400Vac, Type 1, Flange	EXTRAP
LSLV0015H100-4COFN	7.1	6.3	9.1	7.3	1.5kW, 400Vac, Open	EXTRAP
LSLV0015H100-4COFN+FL	7.1	6.3	9.1	7.3	1.5kW, 400Vac, Open, Flange	EXTRAP
LSLV0022H100-2CENN	7.1	6.3	10.5	7.3	2.2kW, 200Vac, Type 1 Conduit	EXTRAP
LSLV0022H100-2CENN+FL	7.1	6.3	10.5	7.3	2.2kW, 200Vac, Type 1, Flange	EXTRAP
LSLV0022H100-2CONN	7.1	6.3	9.1	7.3	2.2kW, 200Vac, Open	EXTRAP
LSLV0022H100-2CONN+FL	7.1	6.3	9.1	7.3	2.2kW, 200Vac, Open, Flange	EXTRAP
LSLV0022H100-4CEFN	7.1	6.3	10.5	7.3	2.2kW, 400Vac, Type 1 Conduit	EXTRAP
LSLV0022H100-4CEFN+FL	7.1	6.3	10.5	7.3	2.2kW, 400Vac, Type 1, Flange	EXTRAP
LSLV0022H100-4COFN	7.1	6.3	9.1	7.3	2.2kW, 400Vac, Open	EXTRAP
LSLV0022H100-4COFN+FL	7.1	6.3	9.1	7.3	2.2kW, 400Vac, Open, Flange	EXTRAP
LSLV0037H100-2CENN	7.1	6.3	10.5	7.3	3.7kW, 200Vac, Type 1 Conduit	EXTRAP
LSLV0037H100-2CENN+FL	7.1	6.3	10.5	7.3	3.7kW, 200Vac, Type 1, Flange	EXTRAP
LSLV0037H100-2CONN	7.1	6.3	9.1	7.3	3.7kW, 200Vac, Open	EXTRAP
LSLV0037H100-2CONN+FL	7.1	6.3	9.1	7.3	3.7kW, 200Vac, Open, Flange	EXTRAP
LSLV0037H100-4CEFN	7.1	6.3	10.5	7.3	3.7kW, 400Vac, Type 1 Conduit	EXTRAP
LSLV0037H100-4CEFN+FL	7.1	6.3	10.5	7.3	3.7kW, 400Vac, Type 1, Flange	EXTRAP
LSLV0037H100-4COFN	7.1	6.3	9.1	7.3	3.7kW, 400Vac, Open	EXTRAP
LSLV0037H100-4COFN+FL	7.1	6.3	9.1	7.3	3.7kW, 400Vac, Open, Flange	EXTRAP
LSLV0055H100-2CENN	7.1	6.3	10.5	7.3	5.5kW, 200Vac, Type 1 Conduit	EXTRAP
LSLV0055H100-2CENN+FL	7.1	6.3	10.5	7.3	5.5kW, 200Vac, Type 1, Flange	EXTRAP
LSLV0055H100-2CONN	7.1	6.3	9.1	7.3	5.5kW, 200Vac, Open	EXTRAP
LSLV0055H100-2CONN+FL	7.1	6.3	9.1	7.3	5.5kW, 200Vac, Open, Flange	EXTRAP
LSLV0055H100-4CEFN	7.1	6.3	10.5	7.3	5.5kW, 400Vac, Type 1 Conduit	EXTRAP
LSLV0055H100-4CEFN+FL	7.1	6.3	10.5	7.3	5.5kW, 400Vac, Type 1, Flange	EXTRAP
LSLV0055H100-4COFN	7.1	6.3	9.1	7.3	5.5kW, 400Vac, Open	EXTRAP
LSLV0055H100-4COFN+FL	7.1	6.3	9.1	7.3	5.5kW, 400Vac, Open, Flange	EXTRAP
LSLV0075H100-2CENN	7.1	6.3	10.5	7.3	7.5kW, 200Vac, Type 1 Conduit	EXTRAP
LSLV0075H100-2CENN+FL	7.1	6.3	10.5	7.3	7.5kW, 200Vac, Type 1, Flange	EXTRAP

NOTES: Table continues on the next page. Additional notes, information, and seismic parameters are shown at the end of the table.

ATTACHMENT 1: CERTIFIED COMPONENTS

SPECIAL SEISMIC CERTIFICATION

TABLE 1 (continued)

DOCUMENT NO.: 17101CR1.0

MANUFACTURER: LS ELECTRIC CO., LTD.						
PRODUCT FAMILY: H100 VFD & SP100 VFD BYPASS						
MODEL NUMBER	DIMENSIONS (in)			MAX. WT. (lb)	DESCRIPTION / NOTES	BASIS
	DEPTH	WIDTH	HEIGHT			
H100 VFD (continued)						
LSLV0075H100-2CONN	7.1	6.3	9.1	7.3	7.5kW, 200Vac, Open	EXTRAP
LSLV0075H100-2CONN+FL	7.1	6.3	9.1	7.3	7.5kW, 200Vac, Open, Flange	EXTRAP
LSLV0075H100-4CEFN	7.1	6.3	10.5	7.3	7.5kW, 400Vac, Type 1 Conduit	EXTRAP
LSLV0075H100-4CEFN+FL	7.1	6.3	10.5	7.3	7.5kW, 400Vac, Type 1, Flange	EXTRAP
LSLV0075H100-4COFN	7.1	6.3	9.1	7.3	7.5kW, 400Vac, Open	EXTRAP
LSLV0075H100-4COFN+FL	7.1	6.3	9.1	7.3	7.5kW, 400Vac, Open, Flange	EXTRAP
LSLV0110H100-2CENN	7.1	6.3	10.5	7.5	11kW, 200Vac, Type 1 Conduit	EXTRAP
LSLV0110H100-2CENN+FL	7.1	6.3	10.5	7.5	11kW, 200Vac, Type 1, Flange	EXTRAP
LSLV0110H100-2CONN	7.1	6.3	9.1	7.5	11kW, 200Vac, Open	EXTRAP
LSLV0110H100-2CONN+FL	7.1	6.3	9.1	7.5	11kW, 200Vac, Open, Flange	EXTRAP
LSLV0110H100-4CEFN	7.1	6.3	10.5	7.5	11kW, 400Vac, Type 1 Conduit	EXTRAP
LSLV0110H100-4CEFN+FL	7.1	6.3	10.5	7.5	11kW, 400Vac, Type 1, Flange	EXTRAP
LSLV0110H100-4COFN	7.1	6.3	9.1	7.5	11kW, 400Vac, Open	EXTRAP
LSLV0110H100-4COFN+FL	7.1	6.3	9.1	7.5	11kW, 400Vac, Open, Flange	EXTRAP
LSLV0150H100-2CENN	8.1	7.1	12.8	10.1	15kW, 200Vac, Type 1 Conduit	EXTRAP
LSLV0150H100-2CENN+FL	8.1	7.1	12.8	10.1	15kW, 200Vac, Type 1, Flange	EXTRAP
LSLV0150H100-2CONN	8.1	7.1	11.4	10.1	15kW, 200Vac, Open	EXTRAP
LSLV0150H100-2CONN+FL	8.1	7.1	11.4	10.1	15kW, 200Vac, Open, Flange	EXTRAP
LSLV0150H100-4CEFN	8.1	7.1	12.8	10.1	15kW, 400Vac, Type 1 Conduit	EXTRAP
LSLV0150H100-4CEFN+FL	8.1	7.1	12.8	10.1	15kW, 400Vac, Type 1, Flange	EXTRAP
LSLV0150H100-4COFN	8.1	7.1	11.4	10.1	15kW, 400Vac, Open	EXTRAP
LSLV0150H100-4COFN+FL	8.1	7.1	11.4	10.1	15kW, 400Vac, Open, Flange	EXTRAP
LSLV0185H100-4CEFN	8.1	7.1	12.8	10.6	18.5kW, 400Vac, Type 1 Conduit	EXTRAP
LSLV0185H100-4CEFN+FL	8.1	7.1	12.8	10.6	18.5kW, 400Vac, Type 1, Flange	EXTRAP
LSLV0185H100-4COFN	8.1	7.1	11.4	10.6	18.5kW, 400Vac, Open	EXTRAP
LSLV0185H100-4COFN+FL	8.1	7.1	11.4	10.6	18.5kW, 400Vac, Open, Flange	EXTRAP
LSLV0008H100-2CENN+DI	8.1	6.3	18.8	12.0	0.75kW, 200Vac, Type 1 Disconnect	EXTRAP
LSLV0015H100-2CENN+DI	8.1	6.3	18.8	12.0	1.5kW, 200Vac, Type 1 Disconnect	EXTRAP
LSLV0022H100-2CENN+DI	8.1	6.3	18.8	12.0	2.2kW, 200Vac, Type 1 Disconnect	EXTRAP
LSLV0037H100-2CENN+DI	8.1	6.3	18.8	12.0	3.7kW, 200Vac, Type 1 Disconnect	EXTRAP
LSLV0055H100-2CENN+DI	8.1	6.3	18.8	12.0	5.5kW, 200Vac, Type 1 Disconnect	EXTRAP
LSLV0075H100-2CENN+DI	8.1	6.3	18.8	12.0	7.5kW, 200Vac, Type 1 Disconnect	EXTRAP
LSLV0110H100-2CENN+DI	8.1	6.3	18.8	12.0	11kW, 200Vac, Type 1 Disconnect	EXTRAP
LSLV0008H100-4CEFN+DI	9.2	6.3	22.3	13.0	0.75kW, 400Vac, Type 1 Disconnect	EXTRAP
LSLV0015H100-4CEFN+DI	9.2	6.3	22.3	13.0	1.5kW, 400Vac, Type 1 Disconnect	EXTRAP
LSLV0022H100-4CEFN+DI	9.2	6.3	22.3	13.0	2.2kW, 400Vac, Type 1 Disconnect	EXTRAP
LSLV0037H100-4CEFN+DI	9.2	6.3	22.3	13.0	3.7kW, 400Vac, Type 1 Disconnect	EXTRAP
LSLV0055H100-4CEFN+DI	9.2	6.3	22.3	13.0	5.5kW, 400Vac, Type 1 Disconnect	EXTRAP
LSLV0075H100-4CEFN+DI	9.2	6.3	22.3	13.0	7.5kW, 400Vac, Type 1 Disconnect	EXTRAP
LSLV0110H100-4CEFN+DI	9.2	6.3	22.3	13.0	11kW, 400Vac, Type 1 Disconnect	EXTRAP
LSLV0150H100-2CENN+DI	9.2	7.1	23.0	15.0	15kW, 200Vac, Type 1 Disconnect	EXTRAP
LSLV0185H100-2CENN	8.8	8.7	15.1	15.7	18.5kW, 200Vac, Type 1 Conduit	EXTRAP

NOTES: Table continues on the next page. Additional notes, information, and seismic parameters are shown at the end of the table.

ATTACHMENT 1: CERTIFIED COMPONENTS

SPECIAL SEISMIC CERTIFICATION

TABLE 1 (continued)

DOCUMENT NO.: 17101CR1.0

MANUFACTURER: LS ELECTRIC CO., LTD.						
PRODUCT FAMILY: H100 VFD & SP100 VFD BYPASS						
MODEL NUMBER	DIMENSIONS (in)			MAX. WT. (lb)	DESCRIPTION / NOTES	BASIS
	DEPTH	WIDTH	HEIGHT			
H100 VFD (continued)						
LSLV0185H100-2CENN+FL	8.8	8.7	15.1	15.7	18.5kW, 200Vac, Type 1, Flange	EXTRAP
LSLV0185H100-2CONN	8.8	8.7	13.8	15.7	18.5kW, 200Vac, Open	EXTRAP
LSLV0185H100-2CONN+FL	8.8	8.7	13.8	15.7	18.5kW, 200Vac, Open, Flange	EXTRAP
LSLV0185H100-4CEFN+DI	9.2	7.1	24.6	16.0	18.5kW, 400Vac, Type 1 Disconnect	EXTRAP
LSLV0220H100-4COFN	8.8	8.7	13.8	16.5	22kW, 400Vac, Open	EXTRAP
LSLV0220H100-4COFN+FL	8.8	8.7	13.8	16.5	22kW, 400Vac, Open, Flange	EXTRAP
LSLV0300H100-4COFN	8.8	8.7	13.8	16.5	30kW, 400Vac, Open	EXTRAP
LSLV0300H100-4COFN+FL	8.8	8.7	13.8	16.5	30kW, 400Vac, Open, Flange	EXTRAP
LSLV0220H100-4CEFN	8.8	8.7	15.1	17.0	22kW, 400Vac, Type 1 Conduit	EXTRAP
LSLV0220H100-4CEFN+FL	8.8	8.7	15.1	17.0	22kW, 400Vac, Type 1, Flange	EXTRAP
LSLV0300H100-4CEFN	8.8	8.7	15.1	17.0	30kW, 400Vac, Type 1 Conduit	EXTRAP
LSLV0300H100-4CEFN+FL	8.8	8.7	15.1	21.0	30kW, 400Vac, Type 1, Flange	UUT 5
LSLV0220H100-4CEFN+DI	9.2	8.7	28.3	22.0	22kW, 400Vac, Type 1 Disconnect	INTERP
LSLV0300H100-4CEFN+DI	9.2	8.7	28.3	22.0	30kW, 400Vac, Type 1 Disconnect	INTERP
LSLV0150H100-4CEFN+DI	9.2	7.1	24.6	24.0	15kW, 400Vac, Type 1 Disconnect	UUT 2
LSLV0185H100-2CENN+DI	9.2	8.7	23.0	30.0	18.5kW, 200Vac, Type 1 Disconnect	UUT 3
LSLV0370H100-4COFD+FL	11.2	10.8	17.7	57.3	37kW, 400Vac, Open, Flange	INTERP
LSLV0370H100-4COND+FL	11.2	10.8	17.7	57.3	37kW, 400Vac, Open, Flange	INTERP
LSLV0370H100-4COFD	11.2	10.8	17.7	57.3	37kW, 400Vac, Open	INTERP
LSLV0370H100-4COND	11.2	10.8	17.7	57.3	37kW, 400Vac, Open	INTERP
LSLV0370H100-4CEFD	11.2	10.8	20.5	60.0	37kW, 400Vac, Type 1 Conduit	UUT 6
LSLV0370H100-4CEND	11.2	10.8	20.5	63.0	37kW, 400Vac, Type 1 Conduit	INTERP
LSLV0370H100-4CEFD+DI	11.2	10.8	32.7	70.0	37kW, 400Vac, Type 1 Disconnect	INTERP
LSLV0370H100-4CEND+DI	11.2	10.8	32.7	70.0	37kW, 400Vac, Type 1 Disconnect	INTERP
LSLV0450H100-4COFD	11.2	12.1	20.1	75.0	45kW, 400Vac, Open	UUT 7
LSLV0450H100-4CEFD	11.2	12.1	23.6	85.0	45kW, 400Vac, Type 1 Conduit	INTERP
LSLV0450H100-4CEND	11.2	12.1	23.6	85.0	45kW, 400Vac, Type 1 Conduit	INTERP
LSLV0550H100-4CEFD	11.2	12.1	23.6	85.0	55kW, 400Vac, Type 1 Conduit	INTERP
LSLV0550H100-4CEND	11.2	12.1	23.6	85.0	55kW, 400Vac, Type 1 Conduit	INTERP
LSLV0750H100-4COND+FL	12.8	12.1	21.7	92.0	75kW, 400Vac, Open, Flange	UUT 9
LSLV0450H100-4COFD+FL	11.2	12.1	20.1	94.8	45kW, 400Vac, Open, Flange	INTERP
LSLV0450H100-4COND	11.2	12.1	20.1	94.8	45kW, 400Vac, Open	INTERP
LSLV0450H100-4COND+FL	11.2	12.1	20.1	94.8	45kW, 400Vac, Open, Flange	INTERP
LSLV0550H100-4COFD	11.2	12.1	20.1	94.8	55kW, 400Vac, Open	INTERP
LSLV0550H100-4COFD+FL	11.2	12.1	20.1	94.8	55kW, 400Vac, Open, Flange	INTERP
LSLV0550H100-4COND	11.2	12.1	20.1	94.8	55kW, 400Vac, Open	INTERP
LSLV0550H100-4COND+FL	11.2	12.1	20.1	94.8	55kW, 400Vac, Open, Flange	INTERP
LSLV0750H100-4COND	12.8	12.1	21.7	94.8	75kW, 400Vac, Open	INTERP
LSLV0900H100-4COND	12.8	12.1	21.7	94.8	90kW, 400Vac, Open	INTERP
LSLV0900H100-4COND+FL	12.8	12.1	21.7	94.8	90kW, 400Vac, Open, Flange	INTERP
LSLV0450H100-4CEFD+DI	11.2	12.1	35.9	95.0	45kW, 400Vac, Type 1 Disconnect	INTERP
LSLV0450H100-4CEND+DI	11.2	12.1	35.9	95.0	45kW, 400Vac, Type 1 Disconnect	INTERP

NOTES: Table continues on the next page. Additional notes, information, and seismic parameters are shown at the end of the table.

ATTACHMENT 1: CERTIFIED COMPONENTS

SPECIAL SEISMIC CERTIFICATION

TABLE 1 (continued)

DOCUMENT NO.: 17101CR1.0

MANUFACTURER: LS ELECTRIC CO., LTD.							
PRODUCT FAMILY: H100 VFD & SP100 VFD BYPASS							
MODEL NUMBER	DIMENSIONS (in)			MAX. WT. (lb)	DESCRIPTION / NOTES	BASIS	
	DEPTH	WIDTH	HEIGHT				
H100 VFD (continued)							
LSLV0550H100-4CEFD+DI	11.2	12.1	35.9	95.0	55kW, 400Vac, Type 1 Disconnect	INTERP	
LSLV0550H100-4CEND+DI	11.2	12.1	35.9	95.0	55kW, 400Vac, Type 1 Disconnect	INTERP	
LSLV0750H100-4CEND	12.8	12.1	27.0	104.0	75kW, 400Vac, Type 1 Conduit	INTERP	
LSLV0900H100-4CEND	12.8	12.1	27.0	104.0	90kW, 400Vac, Type 1 Conduit	UUT 10	
LSLV0750H100-4CEND+DI	12.2	12.1	38.6	120.0	75kW, 400Vac, Type 1 Disconnect	INTERP	
LSLV0900H100-4CEND+DI	12.2	12.1	38.6	121.0	90kW, 400Vac, Type 1 Disconnect	UUT 11	
SP100 VFD Bypass							
LSLV0075SP100-2CEND3	7.1	6.2	29.5	34.0	7.5kW, 200Vac	UUT 1	
LSLV0055SP100-2CEND3	7.1	6.2	29.5	38.0	5.5kW, 200Vac	INTERP	
LSLV0055SP100-4CEFD3	7.1	6.2	29.5	38.0	5.5kW, 400Vac	INTERP	
LSLV0075SP100-4CEFD3	7.1	6.2	29.5	38.0	7.5kW, 400Vac	INTERP	
LSLV0110SP100-4CEFD3	7.1	6.2	29.5	38.0	11kW, 400Vac	INTERP	
LSLV0110SP100-2CEND3	8.9	7.8	39.3	78.0	11kW, 200Vac	INTERP	
LSLV0150SP100-2CEND3	8.9	7.8	39.3	78.0	15kW, 200Vac	INTERP	
LSLV0150SP100-4CEFD3	8.9	7.8	39.3	78.0	15kW, 400Vac	INTERP	
LSLV0185SP100-4CEFD3	8.9	7.8	39.3	78.0	18.5kWp, 400Vac	INTERP	
LSLV0185SP100-2CEND3	10.0	9.4	44.6	93.0	18.5kWp, 200Vac	INTERP	
LSLV0220SP100-4CEFD3	10.0	9.4	44.6	93.0	22kW, 400Vac	INTERP	
LSLV0300SP100-4CEFD3	10.0	9.4	44.6	107.0	30kW, 400Vac	UUT 4	
LSLV0370SP100-4CEND3	12.0	12.9	57.5	159.0	37kW, 400Vac	INTERP	
LSLV0450SP100-4CEND3	12.0	12.9	57.5	182.0	45kW, 400Vac	INTERP	
LSLV0550SP100-4CEND3	12.0	12.9	57.5	182.0	55kW, 400Vac	UUT 8	
MOUNTING: Rigid mounted to rigid or vibration isolation mounted wall.				SEISMIC LEVELS:		$S_{DS} = 2.0g$ for $z/h = 1$ $S_{DS} = 2.5g$ for $z/h = 0$	$I_p = 1.5$
NOTES:							
Product Construction: IP20/UL Open or UL Type 1 enclosure (Type 1 is achieved with conduit, disconnect, or bypass).							
Options/Subcomponents: Voltage: 208/230V (nominal 200V) or 460V (nominal 400V). Available subcomponents are listed in Table 2.							
Nomenclature: See Attachment 3 for nomenclature description.							

ATTACHMENT 1: CERTIFIED SUBCOMPONENTS

SPECIAL SEISMIC CERTIFICATION

TABLE 2 - SUBCOMPONENTS

DOCUMENT NO.: 17101CR1.0

MANUFACTURER: LS ELECTRIC CO., LTD.						
PRODUCT FAMILY: H100 VFD & SP100 VFD BYPASS						
MANUFACTURER AND MODEL NUMBER	DIMENSIONS (in)			MAX. WT. (lb)	DESCRIPTION / NOTES	BASIS
	DEPTH	WIDTH	HEIGHT			
LS Electric - Disconnect Modules						
64160028	6.2	9.8	9.7	7.3	0.75kW-2, HFR1-H100	EXTRAP
64160029	6.2	9.8	9.7	7.3	1.5kW-2, HFR2-H100	EXTRAP
64160030	6.2	9.8	9.7	7.3	2.2kW-2, HFR3-H100	EXTRAP
64160031	6.2	9.8	9.7	7.3	3.7kW-2, HFR4-H100	EXTRAP
64160032	6.2	9.8	9.7	7.3	5.5kW-2, HFR5-H100	EXTRAP
64160033	6.2	9.8	9.7	7.3	7.5kW-2, HFR6-H100	EXTRAP
64160034	6.2	9.8	9.7	8.8	11kW-2, HFR7-H100	EXTRAP
64160037	6.2	11.4	13.2	12.4	0.75kW-4, HFRA-H100	EXTRAP
64160038	6.2	11.4	13.2	12.4	1.5kW-4, HFRB-H100	EXTRAP
64160039	6.2	11.4	13.2	12.4	2.2kW-4, HFRC-H100	EXTRAP
64160040	6.2	11.4	13.2	12.4	3.7kW-4, HFRD-H100	EXTRAP
64160041	6.2	11.4	13.2	12.4	5.5kW-4, HFRE-H100	EXTRAP
64160042	6.2	11.4	13.2	12.4	7.5kW-4, HFRF-H100	EXTRAP
64160043	6.2	11.4	13.2	12.4	11kW-4, HFRG-H100	EXTRAP
64160044	6.2	11.4	13.2	13.0	15kW-4, HFRH-H100	UUT 2
64160045	6.2	11.4	13.2	13.0	18.5kW-4, HFRI-H100	INTERP
64160035	7.0	9.8	11.6	13.5	15kW-2, HFR8-H100	INTERP
64160036	8.5	10.9	12.3	15.0	18.5kW-2, HFR9-H100	UUT 3
64160046	8.5	11.4	14.5	15.0	22kW-4, HFRJ-H100	INTERP
64160047	8.5	11.4	14.5	15.0	30kW-4, HFRK-H100	INTERP
64160048	10.7	13.4	15.0	20.9	37kW-4, HFRL-H100	INTERP
64160049	12.6	13.4	15.8	23.6	45kW-4, HFRM-H100	INTERP
64160050	12.6	13.4	15.8	23.6	55kW-4, HFRN-H100	INTERP
64160051	12.6	14.4	16.9	26.9	75kW-4, HFRO-H100	INTERP
64160052	12.6	14.4	16.9	26.9	90kW-4, HFRP-H100	UUT 11
LS Electric - Capacitor PCB						
10120003822	3.5	5.8		<1	LSLV-S100,055-4	EXTRAP
10120003824	3.5	5.8		<1	LSLV-S100,075-4	EXTRAP
10120003821	3.5	5.8		1.1	LSLV-S100,055-2	UUT 1
10120003823	3.5	5.8		1.1	LSLV-S100,075-2	INTERP
10120003825	3.5	5.8		1.1	LSLV-S100,110-2	INTERP
10120003826	3.5	5.8		1.5	LSLV-S100,110-4	UUT 2
10120003827	3.9	6.6		1.8	LSLV-S100,150-2	UUT 3
10120003828	3.9	6.6		2.1	LSLV-S100,150-4	INTERP
10120003830	3.9	6.6		2.1	LSLV-S100,185-4	INTERP
10120003831	4.7	7.9		3.0	LSLV-S100,220-4	UUT 4,5
Metasol - Contactor						
13370032	3.5	2.7	3.3	1.2	MC-40a AC24V 60Hz SCREW	UUT 1
13390032	4.7	3.1	4.2	2.3	MC-65a AC24V 60Hz SCREW	INTERP
13620002	5.1	4.7	6.2	5.3	MC-130a AC24V 50/60Hz SCREW	UUT 4
13640002	5.1	4.7	6.2	5.3	MC-150a AC24V 50/60Hz SCREW	UUT 8
NOTES: Table continues on the next page. Additional notes, information, and seismic parameters are shown at the end of the table.						

ATTACHMENT 1: CERTIFIED SUBCOMPONENTS

SPECIAL SEISMIC CERTIFICATION

TABLE 2 - SUBCOMPONENTS (continued)

DOCUMENT NO.: 17101CR1.0

MANUFACTURER: LS ELECTRIC CO., LTD.						
PRODUCT FAMILY: H100 VFD & SP100 VFD BYPASS						
MANUFACTURER AND MODEL NUMBER	DIMENSIONS (in)			MAX. WT. (lb)	DESCRIPTION / NOTES	BASIS
	DEPTH	WIDTH	HEIGHT			
Kosed - DC Reactors						
22910000872	2.8	2.6	2.3	2.5	26.3A, 0.81mH, 055SP100-2	EXTRAP
22910000873	2.8	2.6	2.3	2.5	13.2A, 3.7mH, 055SP100-4	EXTRAP
22910000875	3.1	3.0	2.6	3.6	16.9A, 3.2mH, 075SP100-4	EXTRAP
22910000876	3.1	3.0	2.6	3.6	52A, 0.6mH, 110SP100-2	EXTRAP
22910000874	3.1	3.0	2.6	3.9	34.9A, 0.79mH, 075SP100-2	UUT 1
22910000877	3.1	3.0	2.6	4.1	27.6A, 2.4mH, 110SP100-4	INTERP
22910000882	3.0	5.3	2.6	5.6	32A, 1.4mH, 150SP100-4	INTERP
22910000881	3.0	5.3	2.6	6.1	64A, 0.44mH, 150SP100-2	INTERP
22910000883	3.0	5.3	2.6	6.2	40.7A, 1.15mH, 185SP100-4	INTERP
22910000888	3.0	5.3	2.6	6.3	49A, 1mH, 220SP100-4	INTERP
22910000887	3.0	5.3	2.6	6.7	83.8A, 0.35mH, 185SP100-2	INTERP
22910000889	3.0	6.7	2.6	9.2	62.2A, 0.6mH, 300SP100-4	UUT 4
22910000751	3.8	5.1	3.3	9.6	LSLV0300S100-4,92A,0.51mH	UUT 6
22910000752	3.8	6.3	3.3	16.0	LSLV0370S100-4,115A,0.42mH	UUT 7
22910000753	3.8	6.3	3.3	16.0	LSLV0450S100-4,135A,0.35mH	UUT 8
22910000754	3.8	6.3	3.7	18.0	LSLV0550S100-4,185A,0.26mH	UUT 9
22910000755	3.8	7.5	3.7	23.0	LSLV0750S100-4,218A,0.22mH	UUT 10,11
Huawei - Main Capacitor						
08810002699	5.1	3.0	3.1	4.1	400V,6800UF	UUT 7
08810002700	5.1	3.0	3.1	4.1	400V,5600UF	UUT 6
08810002701	5.1	3.0	3.1	4.1	400V,8200UF	UUT 8
08810002699	5.1	3.0	3.1	8.3	400V,6800UF	UUT 10,11
08810002700	5.1	3.0	3.1	8.3	400V,5600UF	UUT 9
LS Electric - Manual Motor Starter						
7051044	3.9	1.8	3.9	<1	MMS-32H 8A	EXTRAP
7051046	3.9	1.8	3.9	<1	MMS-32H 13A	EXTRAP
7051047	3.9	1.8	3.9	<1	MMS-32H 17A	EXTRAP
7051048	3.9	1.8	3.9	<1	MMS-32H 22A	EXTRAP
7051050	3.9	1.8	3.9	<1	MMS-32H 32A	EXTRAP
7051051	3.9	1.8	3.9	<1	MMS-32H 40A	UUT 1
7061018	5.5	2.2	5.7	2.2	MMS-63H 50A	INTERP
7071018	6.5	2.8	6.7	4.9	MMS-32H 75A	INTERP
7070019	6.5	2.8	6.7	4.9	MMS-100H 90A	UUT 3
LS Electric - Circuit Breakers						
02070354UL	6.5	4.1	4.4	3.7	UTS150L MCP 40A 3P UL	UUT 2
02070355UL	6.5	4.1	4.4	3.7	UTS150L MCP 50A 3P UL	INTERP
02070356UL	6.5	4.1	4.4	3.7	UTS150L MCP 60A 3P UL	INTERP
02070358UL	6.5	4.1	4.4	3.7	UTS150L MCP 80A 3P UL	INTERP
02070368UL	6.5	4.1	4.4	3.7	UTS150L MCP 100A 3P UL	UUT 4
02070369UL	6.5	4.1	4.4	3.7	UTS150L MCP 150A 3P UL	UUT 8
02070459UL	6.5	4.1	4.4	3.7	UTS150L MCP 125A 3P UL	INTERP
02090226UL	6.5	4.1	4.4	3.7	UTS150L MCP 175A 3P UL	INTERP
NOTES: Table continues on the next page. Additional notes, information, and seismic parameters are shown at the end of the table.						

ATTACHMENT 1: CERTIFIED SUBCOMPONENTS
SPECIAL SEISMIC CERTIFICATION
TABLE 2 - SUBCOMPONENTS (continued)
DOCUMENT NO.: 17101CR1.0

MANUFACTURER: LS ELECTRIC CO., LTD.						
PRODUCT FAMILY: H100 VFD & SP100 VFD BYPASS						
MANUFACTURER AND MODEL NUMBER	DIMENSIONS (in)			MAX. WT. (lb)	DESCRIPTION / NOTES	BASIS
	DEPTH	WIDTH	HEIGHT			
LS Electric - Circuit Breakers (continued)						
02090228UL	6.5	4.1	4.4	3.7	UTS150L MCP 225A 3P UL	UUT 11
Wabash - Transformers						
73016296006	3.1	3.8	2.2	4.2	Power trans, CL100K05-000-VXC	UUT 1,4,8
LS Electric - EMC Filter						
9710000540	3.7	8.2		1.6	LSLV0300S100-4,42UH	UUT 6
9710000541	3.9	8.4		2.2	LSLV0370/0450S100-4,34UH	UUT 7
LS Electric - Power PCB						
10120004346	5.9	4.9		<1	LSLV-S100,0300-4	UUT 6
10120004553	8.3	6.1		1.7	LSLV-H100,0055-2	INTERP
10120004554	8.3	6.1		1.7	LSLV-H100,0075-2	UUT 1
10120004555	8.3	6.1		1.7	LSLV-H100,0110-2	INTERP
10120004556	10.6	6.9		1.7	LSLV-H100,0150-2	INTERP
10120004558	8.3	6.1		1.7	LSLV-H100,0055-4	INTERP
10120004559	8.3	6.1		1.7	LSLV-H100,0075-4	INTERP
10120004560	8.3	6.1		1.7	LSLV-H100,0110-4	INTERP
10120004561	10.6	6.9		2.1	LSLV-H100,0150-4	UUT 2
10120004562	10.6	6.9		2.1	LSLV-H100,0185-4	INTERP
10120004557	12.7	8.4		2.4	LSLV-H100,0185-2	UUT 3
10120004563	12.7	8.4		2.5	LSLV-H100,0220-4	INTERP
10120004564	12.7	8.4		2.5	LSLV-H100,0300-4	UUT 4,5
LS Electric - OL Detectors						
38060132	2.6	2.8	3.0	<1	GMP60-T 6A 220V 1c[N]	UUT 4,8
38060133	2.6	2.8	3.0	<1	GMP60-T 30A 220V 1c[N]	INTERP
38060134	2.6	2.8	3.0	<1	GMP60-T 60A 220V 1c[N]	UUT 1
Honeywell - Thermal Overload Devices						
6110000126	2.9	1.4	2.6	<1	GCB PART,GCP-32ANM5A	UUT 1,4,8
Osada - Terminal Blocks						
10060001237	2.0	4.9	1.4	<1	OK-060-6P,6P	UUT 1,4
10060002056	2.4	7.4	1.6	<1	OK-0100S-6P,6P	UUT 8
LS Electric - Auxiliary Contact						
83361634001	0.5	2.8	2.7	<1	UA-1,1A1B	UUT 1,4,8
LS Electric - Interlock Unit						
83411634001	0.5	3.3	3.2	<1	UR-02,MC-6aR~150aR	UUT 1,4,8
Infineon - PIM/IGBT						
08910000855	1.8	4.2	0.8	<1	PIM,FP35R12KT4,1200V,35A,B	EXTRAP
08910000856	1.8	4.2	0.8	<1	PIM,FP50R12KT4,1200V,50A,B	UUT 2
08910000858	2.4	4.8	0.8	<1	PIM,FP100R12KT4,1200V,100A,B	UUT 4,5
Fuji - PIM/IGBT						
8910000851	1.8	4.2	0.8	<1	PIM,7MBR75VP060-50,600V	UUT 1
8910000852	1.8	4.2	0.8	<1	PIM,7MBR100VP060-50,600V	INTERP
8910000853	2.4	4.8	0.8	<1	PIM,7MBR150VR060-50,600V	UUT 3
8910001102	2.4	4.8	0.7	<1	IGBT,6MBI150VB-120-50-M,1200V	UUT 6

NOTES: Table continues on the next page. Additional notes, information, and seismic parameters are shown at the end of the table.

ATTACHMENT 1: CERTIFIED SUBCOMPONENTS

SPECIAL SEISMIC CERTIFICATION

TABLE 2 - SUBCOMPONENTS (continued)

DOCUMENT NO.: 17101CR1.0

MANUFACTURER: LS ELECTRIC CO., LTD.						
PRODUCT FAMILY: H100 VFD & SP100 VFD BYPASS						
MANUFACTURER AND MODEL NUMBER	DIMENSIONS (in)			MAX. WT. (lb)	DESCRIPTION / NOTES	BASIS
	DEPTH	WIDTH	HEIGHT			
Fuji - PIM/IGBT (continued)						
8910001101	2.4	5.9	0.7	<1	IGBT,2MBI225VN-120-50-M,1200V	UUT 8,9
8910001100	2.4	5.9	0.7	<1	IGBT,2MBI300VN-120-50-M,1200V	UUT 10,11
LS Electric - Main Power Assembly						
10120004553	8.3	6.1		<1	LSLV0008~0055H100-2	EXTRAP
10120004554	8.3	6.1		<1	LSLV0075H100-2	UUT 1
10120004555	8.3	6.1		<1	LSLV0110H100-2	INTERP
10120004556	10.6	6.9		<1	LSLV0150H100-2	INTERP
10120004557	12.7	8.4		<1	LSLV0185H100-2	UUT 3
10120004558	8.3	6.1		<1	LSLV0008~0055H100-4	INTERP
10120004559	8.3	6.1		<1	LSLV0075H100-4	INTERP
10120004560	8.3	6.1		<1	LSLV0110H100-4	INTERP
10120004561	10.6	6.9		<1	LSLV0150H100-4	UUT 2
10120004562	10.6	6.9		<1	LSLV0185H100-4	INTERP
10120004563	12.7	8.4		<1	LSLV0220H100-4	INTERP
10120004564	12.7	8.4		<1	LSLV0300H100-4	UUT 4,5
LS Electric - Control PCB						
10120004581	3.1	2.3		<1	LSLV-H100,0370~0900-4	UUT 6-11
LS Electric - Main PCB						
10120004566	7.5	5.4		<1	LSLV-H100,0370-4	UUT 6
10120004567	5.8	5.4		<1	LSLV-H100,0450-4	UUT 7
10120004568	5.8	5.4		<1	LSLV-H100,0550-4	UUT 8
10120004569	6.1	5.8		<1	LSLV-H100,0750-4	UUT 9
10120004580	6.1	5.8		<1	LSLV-H100,0900-4	UUT 10,11
LS Electric - Gate Drive						
10120006332	2.4	3.9		<1	LSLV-H100,0450~0750-4	UUT 7-9
10120006333	2.4	3.9		<1	LSLV-H100,0900-4	UUT 10,11
LS Electric - Input PCB						
10120003803	1.9	6.0		<1	LSLV-S100,055/075-2	UUT 1
10120003804	2.0	6.8		<1	LSLV-S100,110-2	INTERP
10120003805	3.0	8.2		<1	LSLV-S100,150-2	UUT 3
10120003806	3.3	4.5		<1	LSLV-S100,055/075-4	INTERP
10120003807	3.9	5.6		<1	LSLV-S100,110/150-4	UUT 2
10120003808	4.1	6.2		<1	LSLV-S100,185/220-4	UUT 4,5
LS Electric - CT PCB						
10120004349	1.9	5.4	1.1	<1	LSLV-S100,0370-4	UUT 7
10120004361	1.9	5.4	1.1	<1	LSLV-S100,0450-4	UUT 8
LS Electric - Snubber PCB						
10120004347	1.7	2.1	1.2	<1	LSLV-S100,0300~0450-4	UUT 6-8
10120004353	1.3	4.2	1.2	<1	LSLV-S100,0550/0750-4	UUT 9-11
LS Electric - Fan SMPS						
10120004352	2.4	6.3		<1	-S100,0550/0750-4	UUT 9-11

NOTES: Table continues on the next page. Additional notes, information, and seismic parameters are shown at the end of the table.

ATTACHMENT 1: CERTIFIED SUBCOMPONENTS

SPECIAL SEISMIC CERTIFICATION

TABLE 2 - SUBCOMPONENTS (continued)

DOCUMENT NO.: 17101CR1.0

MANUFACTURER: LS ELECTRIC CO., LTD.						
PRODUCT FAMILY: H100 VFD & SP100 VFD BYPASS						
MANUFACTURER AND MODEL NUMBER	DIMENSIONS (in)			MAX. WT. (lb)	DESCRIPTION / NOTES	BASIS
	DEPTH	WIDTH	HEIGHT			
Sanrex - Diode Module						
08960001321	1.0	3.7	1.2	<1	DD100KB160,1600V,100A,B	UUT 9-11
08960001322	2.0	4.3	0.7	<1	DF150AC160,1600V,150A,B	UUT 6,7
08960001323	2.0	4.3	0.7	<1	DF200AC160,1600V,200A,B	UUT 8
LS Electric - I/O CPU						
10120004549	4.0	4.5		<1	SV-H100,5.5~30kW	UUT 1-5
10120004550	4.7	5.1		<1	SV-H100,37~90kW	UUT 6-11
LS Electric - I/O TB						
10120004551	1.9	3.9		<1	SV-H100,5.5~90kW	UUT 1-11
LS Electric - Cover Power						
64626294114	3.5	6.3	2.0	<1	055/075/110H100-2/4	UUT 1
64626294117	5.3	7.0	2.0	<1	150H100-2/4, 185H100-4	UUT 2
64626294120	7.3	8.6	2.0	<1	185H100-2, 220/300H100-4	UUT 3-5
64626294123	7.6	10.7	1.5	<1	370H100-4,VF7929012	UUT 6
64626294126	9.4	12.7	1.5	<1	450/550H100-4,VF7929015	UUT 7,8
64626294129	10.8	12.8	1.5	<1	750/900H100-4,VF7929018	UUT 9-11
LS Electric - Terminal Block						
62776224001	1.6	10.6	2.4	1.7	LSLV0300S100-4	UUT 6
62776224002	2.2	12.4	1.6	2.1	LSLV0370/0450S100-4	UUT 8
62776224004	2.2	12.4	1.6	2.1	LSLV0370/0450S100-4	UUT 7
62776224003	3.1	12.4	1.7	2.5	LSLV0550S100-4	UUT 9
62776224005	3.1	12.4	1.7	2.5	LSLV0750S100-4	UUT 10,11
DCC - Fan						
7760000244	2.4	2.4	1.0	<1	F6025X24B0-AH-PC,DC24V	UUT 1
Nidec - Fans						
7760000172	3.6	3.6	1.5	<1	V35131-51LS,DC24V,92SQ*38MM	UUT 3-8
7760000299	2.8	2.8	1.0	<1	D08A-24TS2 15(K),DC24V	UUT 2
NMB - Fan						
7760000272	4.7	4.7	1.5	<1	12038VA-24P-EL-01,DC24V	UUT 9-11
Shizuki - Snubber Capacitor						
8810002338	1.8	1.9	1.5	<1	UB12X185JM5XSA,DC1200V	UUT 6-11
LS Electric - Capacitor Bank						
50826224001	6.1	8.9	5.1	6.2	LSLV0300S100-4,VF8073049	UUT 6
50826224002	6.1	10.9	5.2	6.3	LSLV0370S100-4,VF8073050	UUT 7
50826224004	6.1	10.9	5.2	6.4	LSLV0450S100-4,VF8073087	UUT 8
50826224003	6.1	10.9	7.8	11.4	LSLV0550S100-4,VF8073051	UUT 9
50826224005	6.1	10.9	7.8	12.2	LSLV0750S100-4,VF8073088	UUT 10,11
LS Electric - Busbar						
70226225012	3.3	4.6	3.3	<1	IGBT,LSLV0300S100-4	UUT 6
70226224037	1.5	12.1	2.9	<1	P1P2,LSLV0300S100-4,	UUT 6
70226224038	2.7	11.0	8.8	<1	LSLV0370/0450S100-4	UUT 7,8
70226224039	1.6	13.6	4.1	<1	P1P2,LSLV0370/0450S100-4	UUT 7,8
70226224036	3.5	9.3	3.4	<1	RST,LSLV0300S100-4	INTERP

NOTES: Table continues on the next page. Additional notes, information, and seismic parameters are shown at the end of the table.

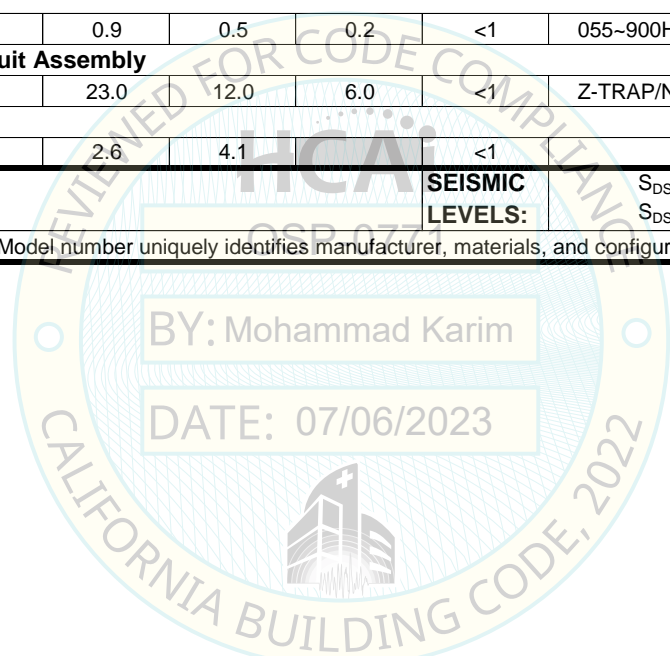
ATTACHMENT 1: CERTIFIED SUBCOMPONENTS

SPECIAL SEISMIC CERTIFICATION

TABLE 2 - SUBCOMPONENTS (continued)

DOCUMENT NO.: 17101CR1.0

MANUFACTURER: LS ELECTRIC CO., LTD.						
PRODUCT FAMILY: H100 VFD & SP100 VFD BYPASS						
MANUFACTURER AND MODEL NUMBER	DIMENSIONS (in)			MAX. WT. (lb)	DESCRIPTION / NOTES	BASIS
	DEPTH	WIDTH	HEIGHT			
LS Electric - Busbar (continued)						
70226224035	2.3	5.4	7.9	1.0	LSLV0300S100-4	UUT 6
70226224040	3.9	11.8	15.3	2.0	LSLV0550/0750S100-4	UUT 9-11
LS Electric - Busbar Diode						
70216225048	1.4	0.5	2.3	<1	LSLV0300~0450S100-4	UUT 6,7
LS Electric - LED Bar						
63466295001	0.9	0.5	0.2	<1	055~900H100,VF7925601	UUT 1-11
LS Electric - Noise Filter Circuit Assembly						
77026236100	23.0	12.0	6.0	<1	Z-TRAP/N-FILTER 400V	UUT 6-11
LS Electric - LCD Keypad						
11040002604	2.6	4.1		<1		UUT 1-11
MOUNTING: Mounted within unit.				SEISMIC LEVELS:	$S_{DS} = 2.0g$ for $z/h = 1$ $S_{DS} = 2.5g$ for $z/h = 0$	$I_p = 1.5$
NOTES: Construction/Options: Model number uniquely identifies manufacturer, materials, and configuration of subcomponents.						



BY: Mohammad Karim

DATE: 07/06/2023

ATTACHMENT 2: TESTING SUMMARY

SPECIAL SEISMIC CERTIFICATION

TEST UNITS

DOCUMENT NO.: 17101CR1.0

UUT	MODEL NUMBER	DIMENSIONS (in)			WEIGHT (lb)	RES. FREQ. (Hz)			TEST RUNS
		DEPTH	WIDTH	HEIGHT		F-B	S-S	V	
UUT 1	LSLV0075SP100-2CEND3	7.1	6.2	29.5	34	N/A	N/A	N/A	1 & 2
UUT 2	LSLV0150H100-4CEFN+DI	9.2	7.1	24.6	24	N/A	N/A	N/A	1 & 2
UUT 3	LSLV0185H100-2CENN+DI	9.2	8.7	23.0	30	N/A	N/A	N/A	1 & 2
UUT 4	LSLV0300SP100-4CEFD3	10.0	9.4	44.6	107	N/A	N/A	N/A	1 & 2
UUT 5	LSLV0300H100-4CEFN+FL	8.8	8.7	15.1	21	N/A	N/A	N/A	1 & 2
UUT 6	LSLV0370H100-4CEFD	11.2	10.8	20.5	60	N/A	N/A	N/A	1 & 2
UUT 7	LSLV0450H100-4COFD	11.2	12.1	20.1	75	N/A	N/A	N/A	1 & 2
UUT 8	LSLV0550SP100-4CEND3	12.0	12.9	57.5	182	N/A	N/A	N/A	1 & 2
UUT 9	LSLV0750H100-4COND+FL	12.8	12.1	21.7	92	N/A	N/A	N/A	1 & 2
UUT 10	LSLV0900H100-4CEND	12.8	12.1	27.0	104	N/A	N/A	N/A	1 & 2
UUT 11	LSLV0900H100-4CEND+DI	12.2	12.1	38.6	121	N/A	N/A	N/A	1 & 2

TEST RUNS

RUN DESCRIPTION:	RUN 1 - RIGID				
TESTED UNITS:	UUT 1 - UUT 11 (listed with 'a' in summaries)				
CODE & CRITERIA:	2022 CBC, ICC-ES AC156				
TEST LABORATORY:	ENVIRONMENTAL TESTING LABORATORY				
REPORT:	17101TR1.0, Rev. 0 (dated 06/23/23), tested on 12/11/2019				
S_{DS} (g)	z/h	A_{FLX-H} (g)	A_{RIG-H} (g)	A_{FLX-V} (g)	A_{RIG-V} (g)
2.0	1	3.20	2.40	1.68	0.68
2.5	0				
MOUNTING & NOTES:					
Test fixture was rigid mounted to the table. All UUTs were rigid wall mounted to the fixture (see individual UUT Summaries for details).					
RUN DESCRIPTION:	RUN 2 - ISOLATED				
TESTED UNITS:	UUT 1 - UUT 11 (listed with 'b' in summaries)				
CODE & CRITERIA:	2022 CBC, ICC-ES AC156				
TEST LABORATORY:	ENVIRONMENTAL TESTING LABORATORY				
REPORT:	17101TR1.0, Rev. 0 (dated 06/23/23), tested on 12/11/2019				
S_{DS} (g)	z/h	A_{FLX-H} (g)	A_{RIG-H} (g)	A_{FLX-V} (g)	A_{RIG-V} (g)
2.0	1	3.20	2.40	1.68	0.68
2.5	0				
MOUNTING & NOTES:					
Test fixture was mounted to table using (4) Mason SSLFHC spring isolators. All UUTs were rigid wall mounted to the fixture (see individual UUT Summaries for details).					



ATTACHMENT 2: UNIT UNDER TEST SUMMARIES

SPECIAL SEISMIC CERTIFICATION

UUT 1a - RIGID

DOCUMENT NO.: 17101CR1.0

MANUFACTURER:		LS ELECTRIC CO., LTD.				
MODEL NUMBER:		LSLV0075SP100-2CEND3				
UNIT FUNCTION:		VARIABLE FREQUENCY DRIVE				
SERIAL NUMBER:		N/A				
DIMENSIONS (in)			WEIGHT (lb)	RES. FREQ. (Hz)		
DEPTH	WIDTH	HEIGHT		F-B	S-S	V
7.1	6.2	29.5	34	N/A	N/A	N/A
CODE & CRITERIA:		2022 CBC, ICC-ES AC156				
TEST LABORATORY:		ENVIRONMENTAL TESTING LABORATORY				
REPORT:		17101TR1.0, Rev. 0 (dated 06/23/23), tested on 12/11/2019				
S _{DS} (g)	z/h	A _{FLX-H} (g)	A _{RIG-H} (g)	A _{FLX-V} (g)	A _{RIG-V} (g)	
2.0	1	3.20	2.40	1.68	0.68	
2.5	0					
IMPORTANCE FACTOR, I_p = 1.5						
Unit was full of operating content during the shake table test. Unit maintained structural integrity and remained functional per manufacturer requirement after shake table test.						
MOUNTING:		Wall mounted using (4) #10 wood screws. Test fixture was rigid mounted to the table.				
CONSTRUCTION:		Carbon steel and plastic construction.				
SUBCOMPONENTS:		LS Electric - H100 Open VFD (LSLV0075H100-2CONN), LS Electric - capacitor PCB (10120003821), Metasol - contactor (13370032), Kosed - DC reactors (22910000874), LS Electric - manual motor starter (7051051), Wabash - transformer (73016296006), LS Electric - power PCB (10120004554), LS Electric - OL detector (38060134), Honeywell - thermal overload device (6110000126), Osada - terminal block (10060001237), LS Electric - auxiliary contact (83361634001), LS Electric - interlock unit (83411634001), Fuji - PIM/IGBT (8910000851), LS Electric - main power assembly (10120004554), LS Electric - input PCB (10120003803), LS Electric - I/O CPU (10120004549), LS Electric - I/O TB (10120004551), LS Electric - cover power (64626294114), DCC - fan (7760000244), LS Electric - LED bar (63466295001), LS Electric - LCD keypad (11040002604)				
TESTING NOTES:		N/A				



UUT 1b - ISOLATED

MANUFACTURER:		LS ELECTRIC CO., LTD.				
MODEL NUMBER:		LSLV0075SP100-2CEND3				
UNIT FUNCTION:		VARIABLE FREQUENCY DRIVE				
SERIAL NUMBER:		N/A				
DIMENSIONS (in)			WEIGHT (lb)	RES. FREQ. (Hz)		
DEPTH	WIDTH	HEIGHT		F-B	S-S	V
7.1	6.2	29.5	34	N/A	N/A	N/A
CODE & CRITERIA:		2022 CBC, ICC-ES AC156				
TEST LABORATORY:		ENVIRONMENTAL TESTING LABORATORY				
REPORT:		17101TR1.0, Rev. 0 (dated 06/23/23), tested on 12/11/2019				
S _{DS} (g)	z/h	A _{FLX-H} (g)	A _{RIG-H} (g)	A _{FLX-V} (g)	A _{RIG-V} (g)	
2.0	1	3.20	2.40	1.68	0.68	
2.5	0					
IMPORTANCE FACTOR, I_p = 1.5						
Unit was full of operating content during the shake table test. Unit maintained structural integrity and remained functional per manufacturer requirement after shake table test.						
MOUNTING:		Wall mounted using (4) #10 wood screws. Test fixture was mounted to table using (4) Mason SSLFHC spring isolators.				
TESTING NOTES:		UUT is the same physical unit as the rigid mounted UUT 1a. Only fixture mounting varies.				



ATTACHMENT 2: UNIT UNDER TEST SUMMARIES

SPECIAL SEISMIC CERTIFICATION

UUT 2a - RIGID

DOCUMENT NO.: 17101CR1.0

MANUFACTURER:		LS ELECTRIC CO., LTD.				
MODEL NUMBER:		LSLV0150H100-4CEFN+DI				
UNIT FUNCTION:		VARIABLE FREQUENCY DRIVE				
SERIAL NUMBER:		N/A				
DIMENSIONS (in)			WEIGHT (lb)	RES. FREQ. (Hz)		
DEPTH	WIDTH	HEIGHT		F-B	S-S	V
9.2	7.1	24.6	24	N/A	N/A	N/A
CODE & CRITERIA:		2022 CBC, ICC-ES AC156				
TEST LABORATORY:		ENVIRONMENTAL TESTING LABORATORY				
REPORT:		17101TR1.0, Rev. 0 (dated 06/23/23), tested on 12/11/2019				
S _{DS} (g)	z/h	A _{FLX-H} (g)	A _{RIG-H} (g)	A _{FLX-V} (g)	A _{RIG-V} (g)	
2.0	1	3.20	2.40	1.68	0.68	
2.5	0					
IMPORTANCE FACTOR, I_p = 1.5						
Unit was full of operating content during the shake table test. Unit maintained structural integrity and remained functional per manufacturer requirement after shake table test.						
MOUNTING:		Wall mounted using (6) #10 wood screws. Test fixture was rigid mounted to the table.				
CONSTRUCTION:		Carbon steel and plastic construction.				
SUBCOMPONENTS:		LS Electric - disconnect modules (64160044), LS Electric - capacitor PCB (10120003826), LS Electric - circuit breaker (02070354UL), LS Electric - power PCB (10120004561), Infineon - PIM/IGBT (08910000856), LS Electric - main power assembly (10120004561), LS Electric - input PCB (10120003807), LS Electric - I/O CPU (10120004549), LS Electric - I/O TB (10120004551), LS Electric - cover power (64626294117), Nidec - fan (7760000299), LS Electric - LED bar (63466295001), LS Electric - LCD keypad (11040002604)				
TESTING NOTES:		N/A				



UUT 2b - ISOLATED

MANUFACTURER:		LS ELECTRIC CO., LTD.				
MODEL NUMBER:		LSLV0150H100-4CEFN+DI				
UNIT FUNCTION:		VARIABLE FREQUENCY DRIVE				
SERIAL NUMBER:		N/A				
DIMENSIONS (in)			WEIGHT (lb)	RES. FREQ. (Hz)		
DEPTH	WIDTH	HEIGHT		F-B	S-S	V
9.2	7.1	24.6	24	N/A	N/A	N/A
CODE & CRITERIA:		2022 CBC, ICC-ES AC156				
TEST LABORATORY:		ENVIRONMENTAL TESTING LABORATORY				
REPORT:		17101TR1.0, Rev. 0 (dated 06/23/23), tested on 12/11/2019				
S _{DS} (g)	z/h	A _{FLX-H} (g)	A _{RIG-H} (g)	A _{FLX-V} (g)	A _{RIG-V} (g)	
2.0	1	3.20	2.40	1.68	0.68	
2.5	0					
IMPORTANCE FACTOR, I_p = 1.5						
Unit was full of operating content during the shake table test. Unit maintained structural integrity and remained functional per manufacturer requirement after shake table test.						
MOUNTING:		Wall mounted using (6) #10 wood screws. Test fixture was mounted to table using (4) Mason SSLFHC spring isolators.				
TESTING NOTES:		UUT is the same physical unit as the rigid mounted UUT 2a. Only fixture mounting varies.				



ATTACHMENT 2: UNIT UNDER TEST SUMMARIES

SPECIAL SEISMIC CERTIFICATION

UUT 3a - RIGID

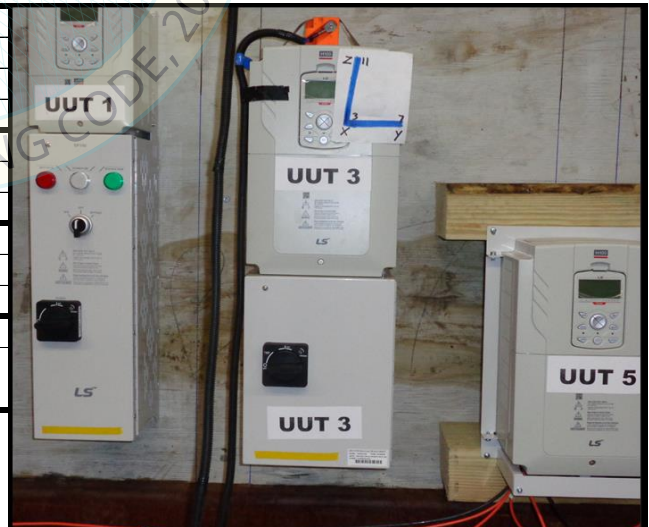
DOCUMENT NO.: 17101CR1.0

MANUFACTURER:		LS ELECTRIC CO., LTD.				
MODEL NUMBER:		LSLV0185H100-2CENN+DI				
UNIT FUNCTION:		VARIABLE FREQUENCY DRIVE				
SERIAL NUMBER:		N/A				
DIMENSIONS (in)			WEIGHT (lb)	RES. FREQ. (Hz)		
DEPTH	WIDTH	HEIGHT		F-B	S-S	V
9.2	8.7	23.0	30	N/A	N/A	N/A
CODE & CRITERIA:		2022 CBC, ICC-ES AC156				
TEST LABORATORY:		ENVIRONMENTAL TESTING LABORATORY				
REPORT:		17101TR1.0, Rev. 0 (dated 06/23/23), tested on 12/11/2019				
S _{DS} (g)	z/h	A _{FLX-H} (g)	A _{RIG-H} (g)	A _{FLX-V} (g)	A _{RIG-V} (g)	
2.0	1	3.20	2.40	1.68	0.68	
2.5	0					
IMPORTANCE FACTOR, I_p = 1.5						
Unit was full of operating content during the shake table test. Unit maintained structural integrity and remained functional per manufacturer requirement after shake table test.						
MOUNTING:		Wall mounted using (6) #10 wood screws. Test fixture was rigid mounted to the table.				
CONSTRUCTION:		Carbon steel and plastic construction.				
SUBCOMPONENTS:		LS Electric - disconnect modules (64160036), LS Electric - capacitor PCB (10120003827), LS Electric - manual motor starter (7070019), LS Electric - power PCB (10120004557), Fuji - PIM/IGBT (8910000853), LS Electric - main power assembly (10120004557), LS Electric - input PCB (10120003805), LS Electric - I/O CPU (10120004549), LS Electric - I/O TB (10120004551), LS Electric - cover power (64626294120), Nidec - fan (7760000172), LS Electric - LED bar (63466295001), LS Electric - LCD keypad (11040002604)				
TESTING NOTES:		N/A				



UUT 3b - ISOLATED

MANUFACTURER:		LS ELECTRIC CO., LTD.				
MODEL NUMBER:		LSLV0185H100-2CENN+DI				
UNIT FUNCTION:		VARIABLE FREQUENCY DRIVE				
SERIAL NUMBER:		N/A				
DIMENSIONS (in)			WEIGHT (lb)	RES. FREQ. (Hz)		
DEPTH	WIDTH	HEIGHT		F-B	S-S	V
9.2	8.7	23.0	30	N/A	N/A	N/A
CODE & CRITERIA:		2022 CBC, ICC-ES AC156				
TEST LABORATORY:		ENVIRONMENTAL TESTING LABORATORY				
REPORT:		17101TR1.0, Rev. 0 (dated 06/23/23), tested on 12/11/2019				
S _{DS} (g)	z/h	A _{FLX-H} (g)	A _{RIG-H} (g)	A _{FLX-V} (g)	A _{RIG-V} (g)	
2.0	1	3.20	2.40	1.68	0.68	
2.5	0					
IMPORTANCE FACTOR, I_p = 1.5						
Unit was full of operating content during the shake table test. Unit maintained structural integrity and remained functional per manufacturer requirement after shake table test.						
MOUNTING:		Wall mounted using (6) #10 wood screws. Test fixture was mounted to table using (4) Mason SSLFHC spring isolators.				
TESTING NOTES:		UUT is the same physical unit as the rigid mounted UUT 3a. Only fixture mounting varies.				



ATTACHMENT 2: UNIT UNDER TEST SUMMARIES

SPECIAL SEISMIC CERTIFICATION

UUT 4a - RIGID

DOCUMENT NO.: 17101CR1.0

MANUFACTURER:		LS ELECTRIC CO., LTD.				
MODEL NUMBER:		LSLV0300SP100-4CEFD3				
UNIT FUNCTION:		VARIABLE FREQUENCY DRIVE				
SERIAL NUMBER:		N/A				
DIMENSIONS (in)			WEIGHT (lb)	RES. FREQ. (Hz)		
DEPTH	WIDTH	HEIGHT		F-B	S-S	V
10.0	9.4	44.6	107	N/A	N/A	N/A
CODE & CRITERIA:		2022 CBC, ICC-ES AC156				
TEST LABORATORY:		ENVIRONMENTAL TESTING LABORATORY				
REPORT:		17101TR1.0, Rev. 0 (dated 06/23/23), tested on 12/11/2019				
S _{DS} (g)	z/h	A _{FLX-H} (g)	A _{RIG-H} (g)	A _{FLX-V} (g)	A _{RIG-V} (g)	
2.0	1	3.20	2.40	1.68	0.68	
2.5	0					
IMPORTANCE FACTOR, I_p = 1.5						
Unit was full of operating content during the shake table test. Unit maintained structural integrity and remained functional per manufacturer requirement after shake table test.						
MOUNTING:		Wall mounted using (4) #10 wood screws. Test fixture was rigid mounted to the table.				
CONSTRUCTION:		Carbon steel and plastic construction.				
SUBCOMPONENTS:		LS Electric - H100 Open VFD (LSLV0300H100-4COFN), LS Electric - capacitor PCB (10120003831), Metasol - contactor (13620002), Kosed - DC reactors (22910000889), LS Electric - circuit breaker (02070368UL), Wabash - transformer (73016296006), LS Electric - power PCB (10120004564), LS Electric - OL detector (38060132), Honeywell - thermal overload device (6110000126), Osada - terminal block (10060001237), LS Electric - auxiliary contact (83361634001), LS Electric - interlock unit (83411634001), Infineon - PIM/IGBT (08910000858), LS Electric - main power assembly (10120004564), LS Electric - input PCB (10120003808), LS Electric - I/O CPU (10120004549), LS Electric - I/O TB (10120004551), LS Electric - cover power (64626294120), Nidec - fan (7760000172), LS Electric - LED bar (63466295001), LS Electric - LCD keypad (11040002604)				
TESTING NOTES:		N/A				



UUT 4b - ISOLATED

MANUFACTURER:		LS ELECTRIC CO., LTD.				
MODEL NUMBER:		LSLV0300SP100-4CEFD3				
UNIT FUNCTION:		VARIABLE FREQUENCY DRIVE				
SERIAL NUMBER:		N/A				
DIMENSIONS (in)			WEIGHT (lb)	RES. FREQ. (Hz)		
DEPTH	WIDTH	HEIGHT		F-B	S-S	V
10.0	9.4	44.6	107	N/A	N/A	N/A
CODE & CRITERIA:		2022 CBC, ICC-ES AC156				
TEST LABORATORY:		ENVIRONMENTAL TESTING LABORATORY				
REPORT:		17101TR1.0, Rev. 0 (dated 06/23/23), tested on 12/11/2019				
S _{DS} (g)	z/h	A _{FLX-H} (g)	A _{RIG-H} (g)	A _{FLX-V} (g)	A _{RIG-V} (g)	
2.0	1	3.20	2.40	1.68	0.68	
2.5	0					
IMPORTANCE FACTOR, I_p = 1.5						
Unit was full of operating content during the shake table test. Unit maintained structural integrity and remained functional per manufacturer requirement after shake table test.						
MOUNTING:		Wall mounted using (4) #10 wood screws. Test fixture was mounted to table using (4) Mason SSLFHC spring isolators.				
TESTING NOTES:		UUT is the same physical unit as the rigid mounted UUT 4a. Only fixture mounting varies.				



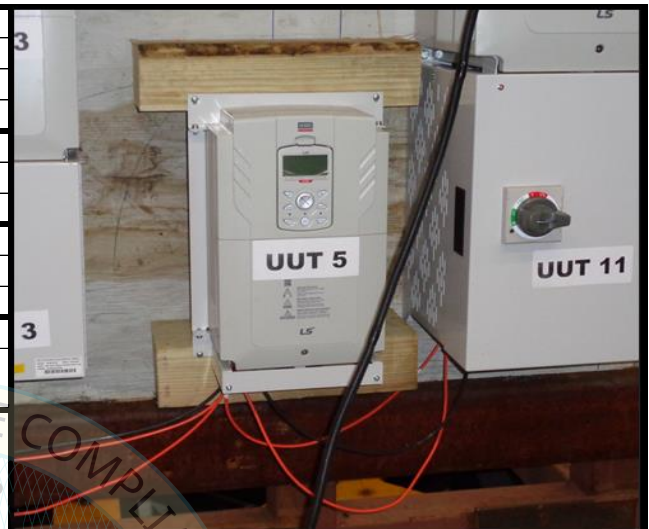
ATTACHMENT 2: UNIT UNDER TEST SUMMARIES

SPECIAL SEISMIC CERTIFICATION

UUT 5a - RIGID

DOCUMENT NO.: 17101CR1.0

MANUFACTURER:		LS ELECTRIC CO., LTD.				
MODEL NUMBER:		LSLV0300H100-4CEFN+FL				
UNIT FUNCTION:		VARIABLE FREQUENCY DRIVE				
SERIAL NUMBER:		N/A				
DIMENSIONS (in)			WEIGHT (lb)	RES. FREQ. (Hz)		
DEPTH	WIDTH	HEIGHT		F-B	S-S	V
8.8	8.7	15.1	21	N/A	N/A	N/A
CODE & CRITERIA:		2022 CBC, ICC-ES AC156				
TEST LABORATORY:		ENVIRONMENTAL TESTING LABORATORY				
REPORT:		17101TR1.0, Rev. 0 (dated 06/23/23), tested on 12/11/2019				
S _{DS} (g)	z/h	A _{FLX-H} (g)	A _{RIG-H} (g)	A _{FLX-V} (g)	A _{RIG-V} (g)	
2.0	1	3.20	2.40	1.68	0.68	
2.5	0					
IMPORTANCE FACTOR, I_p = 1.5						
Unit was full of operating content during the shake table test. Unit maintained structural integrity and remained functional per manufacturer requirement after shake table test.						
MOUNTING:		Wall mounted using (4) #10 wood screws. Test fixture was rigid mounted to the table.				
CONSTRUCTION:		Carbon steel and plastic construction.				
SUBCOMPONENTS:		LS Electric - capacitor PCB (10120003831), LS Electric - power PCB (10120004564), Infineon - PIM/IGBT (08910000858), LS Electric - main power assembly (11040002616), LS Electric - input PCB (10120003808), LS Electric - I/O CPU (10120004549), LS Electric - I/O TB (10120004551), LS Electric - cover power (64626294120), Nidec - fan (7760000172), LS Electric - LED bar (63466295001), LS Electric - LCD keypad (11040002604)				
TESTING NOTES:		N/A				



UUT 5b - ISOLATED

MANUFACTURER:		LS ELECTRIC CO., LTD.				
MODEL NUMBER:		LSLV0300H100-4CEFN+FL				
UNIT FUNCTION:		VARIABLE FREQUENCY DRIVE				
SERIAL NUMBER:		N/A				
DIMENSIONS (in)			WEIGHT (lb)	RES. FREQ. (Hz)		
DEPTH	WIDTH	HEIGHT		F-B	S-S	V
8.8	8.7	15.1	21	N/A	N/A	N/A
CODE & CRITERIA:		2022 CBC, ICC-ES AC156				
TEST LABORATORY:		ENVIRONMENTAL TESTING LABORATORY				
REPORT:		17101TR1.0, Rev. 0 (dated 06/23/23), tested on 12/11/2019				
S _{DS} (g)	z/h	A _{FLX-H} (g)	A _{RIG-H} (g)	A _{FLX-V} (g)	A _{RIG-V} (g)	
2.0	1	3.20	2.40	1.68	0.68	
2.5	0					
IMPORTANCE FACTOR, I_p = 1.5						
Unit was full of operating content during the shake table test. Unit maintained structural integrity and remained functional per manufacturer requirement after shake table test.						
MOUNTING:		Wall mounted using (4) #10 wood screws. Test fixture was mounted to table using (4) Mason SSLFHC spring isolators.				
TESTING NOTES:		UUT is the same physical unit as the rigid mounted UUT 5a. Only fixture mounting varies.				



ATTACHMENT 2: UNIT UNDER TEST SUMMARIES

SPECIAL SEISMIC CERTIFICATION

UUT 6a - RIGID

DOCUMENT NO.: 17101CR1.0

MANUFACTURER:		LS ELECTRIC CO., LTD.				
MODEL NUMBER:		LSLV0370H100-4CEFD				
UNIT FUNCTION:		VARIABLE FREQUENCY DRIVE				
SERIAL NUMBER:		N/A				
DIMENSIONS (in)			WEIGHT (lb)	RES. FREQ. (Hz)		
DEPTH	WIDTH	HEIGHT		F-B	S-S	V
11.2	10.8	20.5	60	N/A	N/A	N/A
CODE & CRITERIA:		2022 CBC, ICC-ES AC156				
TEST LABORATORY:		ENVIRONMENTAL TESTING LABORATORY				
REPORT:		17101TR1.0, Rev. 0 (dated 06/23/23), tested on 12/11/2019				
S _{DS} (g)	z/h	A _{FLX-H} (g)	A _{RIG-H} (g)	A _{FLX-V} (g)	A _{RIG-V} (g)	
2.0	1	3.20	2.40	1.68	0.68	
2.5	0					
IMPORTANCE FACTOR, I_p = 1.5						
Unit was full of operating content during the shake table test. Unit maintained structural integrity and remained functional per manufacturer requirement after shake table test.						
MOUNTING:		Wall mounted using (4) 1/4-in lag bolts. Test fixture was rigid mounted to the table.				
CONSTRUCTION:		Carbon steel and plastic construction.				
SUBCOMPONENTS:		Kosed - DC reactors (22910000751), Huawei - main capacitor (08810002700), LS Electric - EMC filter (9710000540), LS Electric - power PCB (10120004346), Fuji - PIM/IGBT (8910001102), LS Electric - control PCB (10120004581), LS Electric - main PCB (10120004566), LS Electric - snubber PCB (10120004347), Sanrex - diode module (08960001322), LS Electric - I/O CPU (10120004550), LS Electric - I/O TB (10120004551), LS Electric - cover power (64626294123), LS Electric - terminal block (62776224001), Nidec - fan (7760000172), Shizuki - snubber capacitor (8810002338), LS Electric - capacitor bank (50826224001), LS Electric - busbar (70226224035, 70226224037, 70226225012), LS Electric - busbar diode (70216225048), LS Electric - LED bar (63466295001), LS Electric - noise filter circuit assembly (77026236100), LS Electric - LCD keypad (11040002604)				
TESTING NOTES:		N/A				



UUT 6b - ISOLATED

MANUFACTURER:		LS ELECTRIC CO., LTD.				
MODEL NUMBER:		LSLV0370H100-4CEFD				
UNIT FUNCTION:		VARIABLE FREQUENCY DRIVE				
SERIAL NUMBER:		N/A				
DIMENSIONS (in)			WEIGHT (lb)	RES. FREQ. (Hz)		
DEPTH	WIDTH	HEIGHT		F-B	S-S	V
11.2	10.8	20.5	60	N/A	N/A	N/A
CODE & CRITERIA:		2022 CBC, ICC-ES AC156				
TEST LABORATORY:		ENVIRONMENTAL TESTING LABORATORY				
REPORT:		17101TR1.0, Rev. 0 (dated 06/23/23), tested on 12/11/2019				
S _{DS} (g)	z/h	A _{FLX-H} (g)	A _{RIG-H} (g)	A _{FLX-V} (g)	A _{RIG-V} (g)	
2.0	1	3.20	2.40	1.68	0.68	
2.5	0					
IMPORTANCE FACTOR, I_p = 1.5						
Unit was full of operating content during the shake table test. Unit maintained structural integrity and remained functional per manufacturer requirement after shake table test.						
MOUNTING:		Wall mounted using (4) 1/4-in lag bolts. Test fixture was mounted to table using (4) Mason SSLFHC spring isolators.				
TESTING NOTES:		UUT is the same physical unit as the rigid mounted UUT 6a. Only fixture mounting varies.				



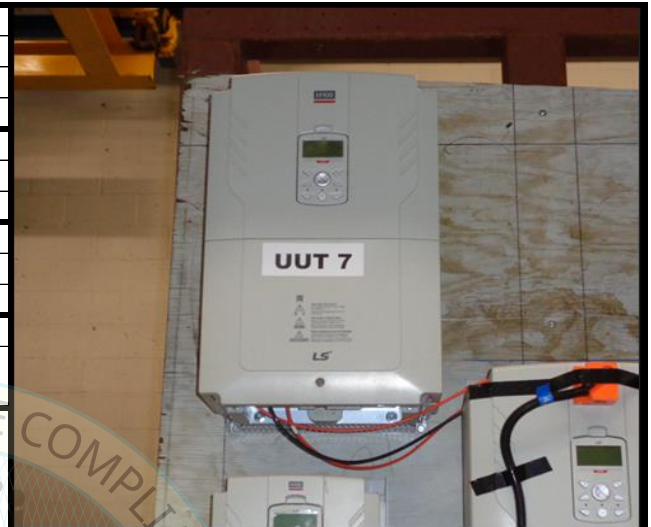
ATTACHMENT 2: UNIT UNDER TEST SUMMARIES

SPECIAL SEISMIC CERTIFICATION

UUT 7a - RIGID

DOCUMENT NO.: 17101CR1.0

MANUFACTURER:		LS ELECTRIC CO., LTD.				
MODEL NUMBER:		LSLV0450H100-4COFD				
UNIT FUNCTION:		VARIABLE FREQUENCY DRIVE				
SERIAL NUMBER:		N/A				
DIMENSIONS (in)			WEIGHT (lb)	RES. FREQ. (Hz)		
DEPTH	WIDTH	HEIGHT		F-B	S-S	V
11.2	12.1	20.1	75	N/A	N/A	N/A
CODE & CRITERIA:		2022 CBC, ICC-ES AC156				
TEST LABORATORY:		ENVIRONMENTAL TESTING LABORATORY				
REPORT:		17101TR1.0, Rev. 0 (dated 06/23/23), tested on 12/11/2019				
S _{DS} (g)	z/h	A _{FLX-H} (g)	A _{RIG-H} (g)	A _{FLX-V} (g)	A _{RIG-V} (g)	
2.0	1	3.20	2.40	1.68	0.68	
2.5	0					
IMPORTANCE FACTOR, I_p = 1.5						
Unit was full of operating content during the shake table test. Unit maintained structural integrity and remained functional per manufacturer requirement after shake table test.						
MOUNTING:		Wall mounted using (4) 1/4-in lag bolts. Test fixture was rigid mounted to the table.				
CONSTRUCTION:		Carbon steel and plastic construction.				
SUBCOMPONENTS:		Kosed - DC reactors (22910000752), Huawei - main capacitor (08810002699), LS Electric - EMC filter (9710000541), LS Electric - control PCB (10120004581), LS Electric - main PCB (10120004567), LS Electric - gate drive (10120006332), LS Electric - CT PCB (10120004349), LS Electric - snubber PCB (10120004347), Sanrex - diode module (08960001322), LS Electric - I/O CPU (10120004550), LS Electric - I/O TB (10120004551), LS Electric - cover power (64626294126), LS Electric - terminal block (62776224004), Nidec - fan (7760000172), Shizuki - snubber capacitor (8810002338), LS Electric - capacitor bank (50826224002), LS Electric - busbar (70226224038, 70226224039), LS Electric - busbar diode (70216225048), LS Electric - LED bar (63466295001), LS Electric - noise filter circuit assembly (77026236100), LS Electric - LCD keypad (11040002604)				
TESTING NOTES:		N/A				



UUT 7b - ISOLATED

MANUFACTURER:		LS ELECTRIC CO., LTD.				
MODEL NUMBER:		LSLV0450H100-4COFD				
UNIT FUNCTION:		VARIABLE FREQUENCY DRIVE				
SERIAL NUMBER:		N/A				
DIMENSIONS (in)			WEIGHT (lb)	RES. FREQ. (Hz)		
DEPTH	WIDTH	HEIGHT		F-B	S-S	V
11.2	12.1	20.1	75	N/A	N/A	N/A
CODE & CRITERIA:		2022 CBC, ICC-ES AC156				
TEST LABORATORY:		ENVIRONMENTAL TESTING LABORATORY				
REPORT:		17101TR1.0, Rev. 0 (dated 06/23/23), tested on 12/11/2019				
S _{DS} (g)	z/h	A _{FLX-H} (g)	A _{RIG-H} (g)	A _{FLX-V} (g)	A _{RIG-V} (g)	
2.0	1	3.20	2.40	1.68	0.68	
2.5	0					
IMPORTANCE FACTOR, I_p = 1.5						
Unit was full of operating content during the shake table test. Unit maintained structural integrity and remained functional per manufacturer requirement after shake table test.						
MOUNTING:		Wall mounted using (4) 1/4-in lag bolts. Test fixture was mounted to table using (4) Mason SSLFHC spring isolators.				
TESTING NOTES:		UUT is the same physical unit as the rigid mounted UUT 7a. Only fixture mounting varies.				



ATTACHMENT 2: UNIT UNDER TEST SUMMARIES

SPECIAL SEISMIC CERTIFICATION

UUT 8a - RIGID

DOCUMENT NO.: 17101CR1.0

MANUFACTURER:	LS ELECTRIC CO., LTD.
MODEL NUMBER:	LSLV0550SP100-4CEND3
UNIT FUNCTION:	VARIABLE FREQUENCY DRIVE
SERIAL NUMBER:	N/A

DIMENSIONS (in)			WEIGHT (lb)	RES. FREQ. (Hz)		
DEPTH	WIDTH	HEIGHT		F-B	S-S	V
12.0	12.9	57.5	182	N/A	N/A	N/A

CODE & CRITERIA: 2022 CBC, ICC-ES AC156

TEST LABORATORY: ENVIRONMENTAL TESTING LABORATORY

REPORT: 17101TR1.0, Rev. 0 (dated 06/23/23), tested on 12/11/2019

S _{DS} (g)	z/h	A _{FLX-H} (g)	A _{RIG-H} (g)	A _{FLX-V} (g)	A _{RIG-V} (g)
2.0	1	3.20	2.40	1.68	0.68
2.5	0				

IMPORTANCE FACTOR, I_p = 1.5
 Unit was full of operating content during the shake table test. Unit maintained structural integrity and remained functional per manufacturer requirement after shake table test.



MOUNTING: Wall mounted using (4) 5/16-in lag bolts. Test fixture was rigid mounted to the table.

CONSTRUCTION: Carbon steel and plastic construction.

SUBCOMPONENTS: LS Electric - H100 Open VFD (LSLV0550H100-4COND), Metasol - contactor (13640002), Kosed - DC reactors (22910000753), Huawei - main capacitor (08810002701), LS Electric - circuit breaker (02070369UL), Wabash - transformer (73016296006), LS Electric - OL detector (38060132), Honeywell - thermal overload device (6110000126), Osada - terminal block (10060002056), LS Electric - auxiliary contact (83361634001), LS Electric - interlock unit (83411634001), Fuji - PIM/IGBT (8910001101), LS Electric - control PCB (10120004581), LS Electric - main PCB (10120004568), LS Electric - gate drive (10120006332), LS Electric - CT PCB (10120004361), LS Electric - snubber PCB (10120004347), Sanrex - diode module (08960001323), LS Electric - I/O CPU (10120004550), LS Electric - I/O TB (10120004551), LS Electric - cover power (64626294126), LS Electric - terminal block (62776224002), Nidec - fan (7760000172), Shizuki - snubber capacitor (8810002338), LS Electric - capacitor bank (50826224004), LS Electric - busbar (70226224038, 70226224039), LS Electric - LED bar (63466295001), LS Electric - noise filter circuit assembly (77026236100), LS Electric - LCD keypad (11040002604)

TESTING NOTES: N/A

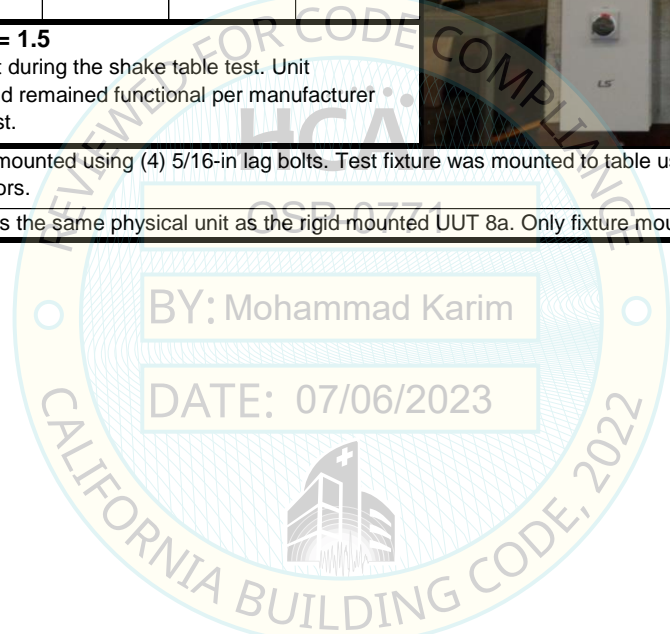
ATTACHMENT 2: UNIT UNDER TEST SUMMARIES

SPECIAL SEISMIC CERTIFICATION

UUT 8b - ISOLATED

DOCUMENT NO.: 17101CR1.0

MANUFACTURER:		LS ELECTRIC CO., LTD.				
MODEL NUMBER:		LSLV0550SP100-4CEND3				
UNIT FUNCTION:		VARIABLE FREQUENCY DRIVE				
SERIAL NUMBER:		N/A				
DIMENSIONS (in)			WEIGHT	RES. FREQ. (Hz)		
DEPTH	WIDTH	HEIGHT	(lb)	F-B	S-S	V
12.0	12.9	57.5	182	N/A	N/A	N/A
CODE & CRITERIA:		2022 CBC, ICC-ES AC156				
TEST LABORATORY:		ENVIRONMENTAL TESTING LABORATORY				
REPORT:		17101TR1.0, Rev. 0 (dated 06/23/23), tested on 12/11/2019				
S_{DS} (g)	z/h	A_{FLX-H} (g)	A_{RIG-H} (g)	A_{FLX-V} (g)	A_{RIG-V} (g)	
2.0	1	3.20	2.40	1.68	0.68	
2.5	0					
IMPORTANCE FACTOR, I_p = 1.5						
Unit was full of operating content during the shake table test. Unit maintained structural integrity and remained functional per manufacturer requirement after shake table test.						
MOUNTING:		Wall mounted using (4) 5/16-in lag bolts. Test fixture was mounted to table using (4) Mason SSLFHC spring isolators.				
TESTING NOTES:		UUT is the same physical unit as the rigid mounted UUT 8a. Only fixture mounting varies.				



ATTACHMENT 2: UNIT UNDER TEST SUMMARIES

SPECIAL SEISMIC CERTIFICATION

UUT 9a - RIGID

DOCUMENT NO.: 17101CR1.0

MANUFACTURER:		LS ELECTRIC CO., LTD.				
MODEL NUMBER:		LSLV0750H100-4COND+FL				
UNIT FUNCTION:		VARIABLE FREQUENCY DRIVE				
SERIAL NUMBER:		N/A				
DIMENSIONS (in)			WEIGHT (lb)	RES. FREQ. (Hz)		
DEPTH	WIDTH	HEIGHT		F-B	S-S	V
12.8	12.1	21.7	92	N/A	N/A	N/A
CODE & CRITERIA:		2022 CBC, ICC-ES AC156				
TEST LABORATORY:		ENVIRONMENTAL TESTING LABORATORY				
REPORT:		17101TR1.0, Rev. 0 (dated 06/23/23), tested on 12/11/2019				
S _{DS} (g)	z/h	A _{FLX-H} (g)	A _{RIG-H} (g)	A _{FLX-V} (g)	A _{RIG-V} (g)	
2.0	1	3.20	2.40	1.68	0.68	
2.5	0					
IMPORTANCE FACTOR, I_p = 1.5						
Unit was full of operating content during the shake table test. Unit maintained structural integrity and remained functional per manufacturer requirement after shake table test.						
MOUNTING:		Wall mounted using (4) 5/16-in lag bolts. Test fixture was rigid mounted to the table.				
CONSTRUCTION:		Carbon steel and plastic construction.				
SUBCOMPONENTS:		Kosed - DC reactors (22910000754), Huawei - main capacitor (08810002700), Fuji - PIM/IGBT (8910001101), LS Electric - control PCB (10120004581), LS Electric - main PCB (10120004569), LS Electric - gate drive (10120006332), LS Electric - snubber PCB (10120004353), LS Electric - fan SMPS (10120004352), Sanrex - diode module (08960001321), LS Electric - I/O CPU (10120004550), LS Electric - I/O TB (10120004551), LS Electric - cover power (64626294129), LS Electric - terminal block (62776224003), NMB - fan (7760000272), Shizuki - snubber capacitor (8810002338), LS Electric - capacitor bank (50826224003), LS Electric - busbar (70226224040), LS Electric - LED bar (63466295001), LS Electric - noise filter circuit assembly (77026236100), LS Electric - LCD keypad (11040002604)				
TESTING NOTES:		N/A				



UUT 9b - ISOLATED

MANUFACTURER:		LS ELECTRIC CO., LTD.				
MODEL NUMBER:		LSLV0750H100-4COND+FL				
UNIT FUNCTION:		VARIABLE FREQUENCY DRIVE				
SERIAL NUMBER:		N/A				
DIMENSIONS (in)			WEIGHT (lb)	RES. FREQ. (Hz)		
DEPTH	WIDTH	HEIGHT		F-B	S-S	V
12.8	12.1	21.7	92	N/A	N/A	N/A
CODE & CRITERIA:		2022 CBC, ICC-ES AC156				
TEST LABORATORY:		ENVIRONMENTAL TESTING LABORATORY				
REPORT:		17101TR1.0, Rev. 0 (dated 06/23/23), tested on 12/11/2019				
S _{DS} (g)	z/h	A _{FLX-H} (g)	A _{RIG-H} (g)	A _{FLX-V} (g)	A _{RIG-V} (g)	
2.0	1	3.20	2.40	1.68	0.68	
2.5	0					
IMPORTANCE FACTOR, I_p = 1.5						
Unit was full of operating content during the shake table test. Unit maintained structural integrity and remained functional per manufacturer requirement after shake table test.						
MOUNTING:		Wall mounted using (4) 5/16-in lag bolts. Test fixture was mounted to table using (4) Mason SSLFHC spring isolators.				
TESTING NOTES:		UUT is the same physical unit as the rigid mounted UUT 9a. Only fixture mounting varies.				



ATTACHMENT 2: UNIT UNDER TEST SUMMARIES

SPECIAL SEISMIC CERTIFICATION

UUT 10a - RIGID

DOCUMENT NO.: 17101CR1.0

MANUFACTURER:		LS ELECTRIC CO., LTD.				
MODEL NUMBER:		LSLV0900H100-4CEND				
UNIT FUNCTION:		VARIABLE FREQUENCY DRIVE				
SERIAL NUMBER:		N/A				
DIMENSIONS (in)			WEIGHT (lb)	RES. FREQ. (Hz)		
DEPTH	WIDTH	HEIGHT		F-B	S-S	V
12.8	12.1	27.0	104	N/A	N/A	N/A
CODE & CRITERIA:		2022 CBC, ICC-ES AC156				
TEST LABORATORY:		ENVIRONMENTAL TESTING LABORATORY				
REPORT:		17101TR1.0, Rev. 0 (dated 06/23/23), tested on 12/11/2019				
S _{DS} (g)	z/h	A _{FLX-H} (g)	A _{RIG-H} (g)	A _{FLX-V} (g)	A _{RIG-V} (g)	
2.0	1	3.20	2.40	1.68	0.68	
2.5	0					
IMPORTANCE FACTOR, I_p = 1.5						
Unit was full of operating content during the shake table test. Unit maintained structural integrity and remained functional per manufacturer requirement after shake table test.						
MOUNTING:		Wall mounted using (4) 5/16-in lag bolts. Test fixture was rigid mounted to the table.				
CONSTRUCTION:		Carbon steel and plastic construction.				
SUBCOMPONENTS:		Kosed - DC reactors (22910000755), Huawei - main capacitor (08810002699), Fuji - PIM/IGBT (8910001100), LS Electric - control PCB (10120004581), LS Electric - main PCB (10120004580), LS Electric - gate drive (10120006333), LS Electric - snubber PCB (10120004353), LS Electric - fan SMPS (10120004352), Sanrex - diode module (08960001321), LS Electric - I/O CPU (10120004550), LS Electric - I/O TB (10120004551), LS Electric - cover power (64626294129), LS Electric - terminal block (62776224005), NMB - fan (7760000272), Shizuki - snubber capacitor (8810002338), LS Electric - capacitor bank (50826224005), LS Electric - busbar (70226224040), LS Electric - LED bar (63466295001), LS Electric - noise filter circuit assembly (77026236100), LS Electric - LCD keypad (11040002604)				
TESTING NOTES:		N/A				



UUT 10b - ISOLATED

MANUFACTURER:		LS ELECTRIC CO., LTD.				
MODEL NUMBER:		LSLV0900H100-4CEND				
UNIT FUNCTION:		VARIABLE FREQUENCY DRIVE				
SERIAL NUMBER:		N/A				
DIMENSIONS (in)			WEIGHT (lb)	RES. FREQ. (Hz)		
DEPTH	WIDTH	HEIGHT		F-B	S-S	V
12.8	12.1	27.0	104	N/A	N/A	N/A
CODE & CRITERIA:		2022 CBC, ICC-ES AC156				
TEST LABORATORY:		ENVIRONMENTAL TESTING LABORATORY				
REPORT:		17101TR1.0, Rev. 0 (dated 06/23/23), tested on 12/11/2019				
S _{DS} (g)	z/h	A _{FLX-H} (g)	A _{RIG-H} (g)	A _{FLX-V} (g)	A _{RIG-V} (g)	
2.0	1	3.20	2.40	1.68	0.68	
2.5	0					
IMPORTANCE FACTOR, I_p = 1.5						
Unit was full of operating content during the shake table test. Unit maintained structural integrity and remained functional per manufacturer requirement after shake table test.						
MOUNTING:		Wall mounted using (4) 5/16-in lag bolts. Test fixture was mounted to table using (4) Mason SSLFHC spring isolators.				
TESTING NOTES:		UUT is the same physical unit as the rigid mounted UUT 10a. Only fixture mounting varies.				



ATTACHMENT 2: UNIT UNDER TEST SUMMARIES

SPECIAL SEISMIC CERTIFICATION

UUT 11a - RIGID

DOCUMENT NO.: 17101CR1.0

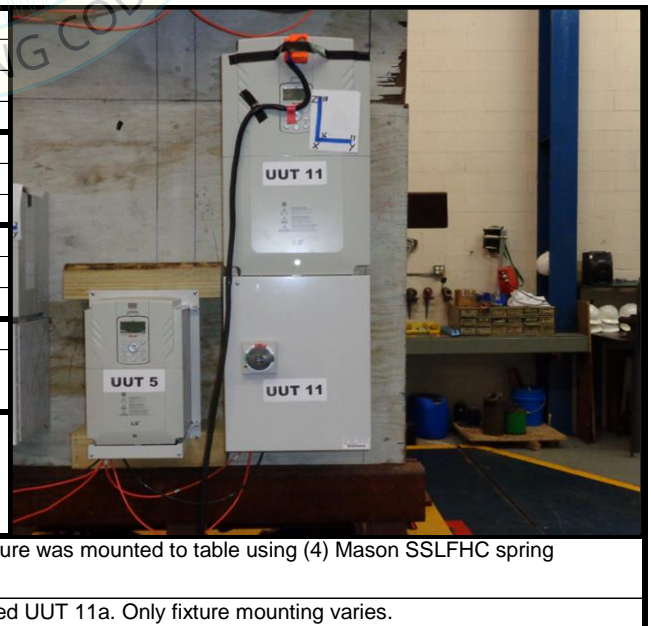
MANUFACTURER:		LS ELECTRIC CO., LTD.				
MODEL NUMBER:		LSLV0900H100-4CEND+DI				
UNIT FUNCTION:		VARIABLE FREQUENCY DRIVE				
SERIAL NUMBER:		N/A				
DIMENSIONS (in)			WEIGHT (lb)	RES. FREQ. (Hz)		
DEPTH	WIDTH	HEIGHT		F-B	S-S	V
12.2	12.1	38.6	121	N/A	N/A	N/A
CODE & CRITERIA:		2022 CBC, ICC-ES AC156				
TEST LABORATORY:		ENVIRONMENTAL TESTING LABORATORY				
REPORT:		17101TR1.0, Rev. 0 (dated 06/23/23), tested on 12/11/2019				
S _{DS} (g)	z/h	A _{FLX-H} (g)	A _{RIG-H} (g)	A _{FLX-V} (g)	A _{RIG-V} (g)	
2.0	1	3.20	2.40	1.68	0.68	
2.5	0					
IMPORTANCE FACTOR, I_p = 1.5						
Unit was full of operating content during the shake table test. Unit maintained structural integrity and remained functional per manufacturer requirement after shake table test.						
MOUNTING:		Wall mounted using (6) 5/16-in lag bolts. Test fixture was rigid mounted to the table.				
CONSTRUCTION:		Carbon steel and plastic construction.				
SUBCOMPONENTS:		LS Electric - disconnect modules (64160052), Kosed - DC reactors (22910000755), Huawei - main capacitor (08810002699), LS Electric - circuit breaker (02090228UL), Fuji - PIM/IGBT (8910001100), LS Electric - control PCB (10120004581), LS Electric - main PCB (10120004580), LS Electric - gate drive (10120006333), LS Electric - snubber PCB (10120004353), LS Electric - fan SMPS (10120004352), Sanrex - diode module (08960001321), LS Electric - I/O CPU (10120004550), LS Electric - I/O TB (10120004551), LS Electric - cover power (64626294129), LS Electric - terminal block (62776224005), NMB - fan (7760000272), Shizuki - snubber capacitor (8810002338), LS Electric - capacitor bank (50826224005), LS Electric - busbar (70226224040), LS Electric - LED bar (63466295001), LS Electric - noise filter circuit assembly (77026236100), LS Electric - LCD keypad (11040002604)				
TESTING NOTES:		N/A				



UUT 11b - ISOLATED

DOCUMENT NO.: 17101CR1.0

MANUFACTURER:		LS ELECTRIC CO., LTD.				
MODEL NUMBER:		LSLV0900H100-4CEND+DI				
UNIT FUNCTION:		VARIABLE FREQUENCY DRIVE				
SERIAL NUMBER:		N/A				
DIMENSIONS (in)			WEIGHT (lb)	RES. FREQ. (Hz)		
DEPTH	WIDTH	HEIGHT		F-B	S-S	V
12.2	12.1	38.6	121	N/A	N/A	N/A
CODE & CRITERIA:		2022 CBC, ICC-ES AC156				
TEST LABORATORY:		ENVIRONMENTAL TESTING LABORATORY				
REPORT:		17101TR1.0, Rev. 0 (dated 06/23/23), tested on 12/11/2019				
S _{DS} (g)	z/h	A _{FLX-H} (g)	A _{RIG-H} (g)	A _{FLX-V} (g)	A _{RIG-V} (g)	
2.0	1	3.20	2.40	1.68	0.68	
2.5	0					
IMPORTANCE FACTOR, I_p = 1.5						
Unit was full of operating content during the shake table test. Unit maintained structural integrity and remained functional per manufacturer requirement after shake table test.						
MOUNTING:		Wall mounted using (6) 5/16-in lag bolts. Test fixture was mounted to table using (4) Mason SSLFHC spring isolators.				
TESTING NOTES:		UUT is the same physical unit as the rigid mounted UUT 11a. Only fixture mounting varies.				



ATTACHMENT 3: MODEL NOMENCLATURE

SPECIAL SEISMIC CERTIFICATION

H100 VFD

DOCUMENT NO.: 17101CR1.0

DIGIT:	1	2	3	4	5	6	7	8	9	10	11	12	13	14	15	16	17	18	19	20	21	-	-	-	-	-	-	-	-
SAMPLE:	L	S	L	V	0	9	0	0	H	1	0	0	-	4	C	E	N	D	+	D	I	-	-	-	-	-	-	-	-
DIGIT	DIGIT DESCRIPTION										CODES	DEFINITIONS																	
1-4	Product Type Prefix										LSLV																		
5-8	Power Rating										0008	0.75kW (1hp)																	
											0015	1.5kW (2hp)																	
											0022	2.2kW (3hp)																	
											0037	3.7kW (5hp)																	
											0055	5.5kW (7.5hp)																	
											0075	7.5kW (10hp)																	
											0110	11kW (15hp)																	
											0150	15kW (20hp)																	
											0185	18.5kW (25hp)																	
											0220	22kW (30hp)																	
											0300	30kW (40hp)																	
											0370	37kW (50hp)																	
											0450	45kW (60hp)																	
											0550	55kW (75hp)																	
0750	75kW (100hp)																												
0900	90kW (125hp)																												
9-13	Series Name										H100-																		
14	Input Voltage										2	200Vac (nominal), 3-Phase, 60Hz																	
											4	400Vac (nominal), 3-Phase, 60Hz																	
15	LCD Keypad										C																		
16	UL Type										O	UL Open																	
											E	UL Type 1 (conduit option unless '+DI' is present at end)																	
											F	Built-in EMC Filter (only available for 460Vac up to 55kW)																	
17	EMC Filter										N	No EMC filter (only option for 200Vac, 400Vac 37kW - 90kW)																	
											D	Built-in dc Reactor (only available for 400Vac, 37kW - 90kW)																	
18	Reactor Type										N	Non dc Reactor																	
											[blank]	No additional options if blank																	
19-21	Additional Options										+DI	Disconnect module																	
											+FL	Flange mount																	

ATTACHMENT 3: MODEL NOMENCLATURE

SPECIAL SEISMIC CERTIFICATION

SP100 VFD Bypass

DOCUMENT NO.: 17101CR1.0

DIGIT:	1	2	3	4	5	6	7	8	9	10	11	12	13	14	15	16	17	18	19	20	-	-	-	-	-	-	-	-	-	-
SAMPLE:	L	S	L	V	0	5	5	0	S	P	1	0	0	-	4	C	E	N	D	3	-	-	-	-	-	-	-	-	-	
DIGIT	DIGIT DESCRIPTION		CODES	DEFINITIONS																										
1-4	Product Type Prefix		LSLV																											
5-8	Power Rating		0055	5.5kW (7.5hp)																										
			0075	7.5kW (10hp)																										
			0110	11kW (15hp)																										
			0150	15kW (20hp)																										
			0185	18.5kW (25hp)																										
			0220	22kW (30hp)																										
			0300	30kW (40hp)																										
			0370	37kW (50hp)																										
			0450	45kW (60hp)																										
			0550	55kW (75hp)																										
9-14	Series Name		SP100-																											
15	Input Voltage		2	200Vac (nominal), 3-Phase, 60Hz																										
			4	400Vac (nominal), 3-Phase, 60Hz																										
16	LCD Keypad		C																											
17	Enclosure		E	UL Type 1																										
18	EMC Filter		F	Built-in EMC Filter (only available for 400Vac up to 30kW)																										
			N	No EMC filter																										
19	Reactor Type		D	DC Link Reactor																										
20	Communication Options		3	3 Contactor Type																										

