



**CALIFORNIA**  
RURAL HEALTH TRANSFORMATION

# Information Session: CaIRHT 2026 Grants

Jennifer Hernandez  
Director, California Rural Health Transformation

July 1, 2026



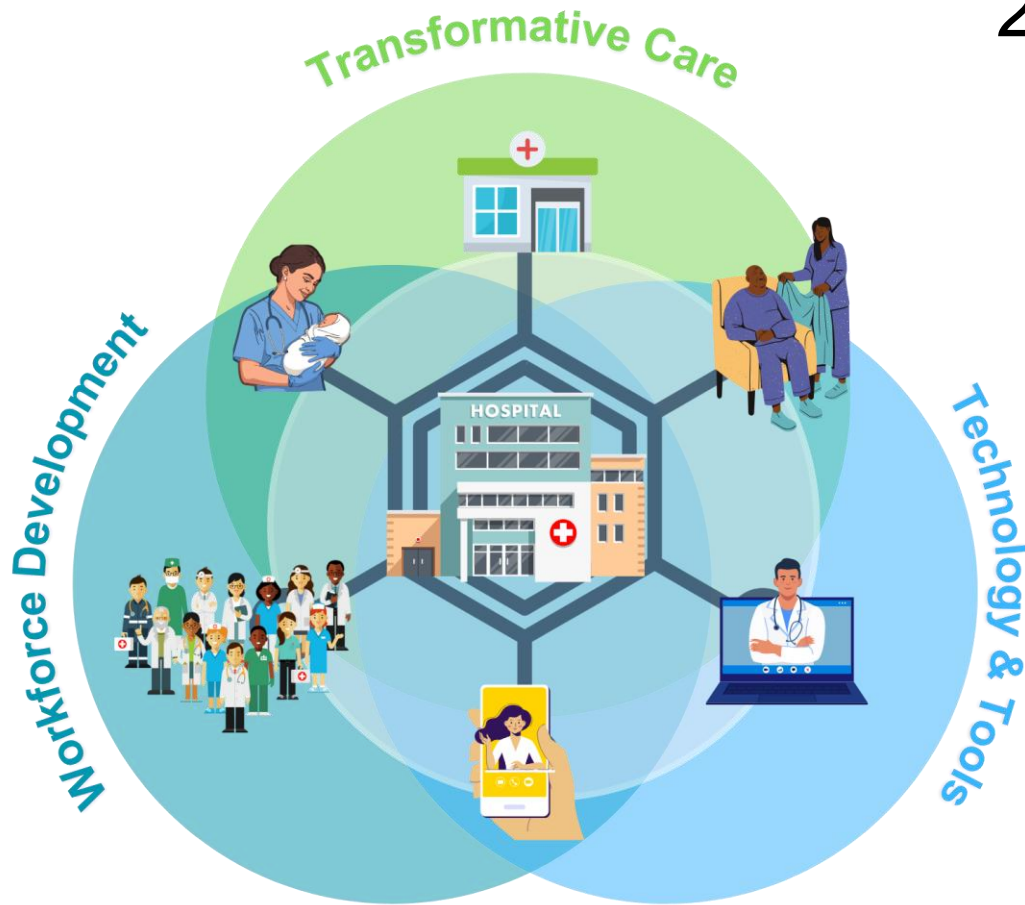
# Agenda

- Welcome
- CalRHT Program Overview
- 2026 Grants
- Timeline
- What's Next

*The CalRHT program is supported by the Centers for Medicare & Medicaid Services (CMS) of the U.S. Department of Health and Human Services (HHS) as part of a financial assistance award totaling \$233,639,308.46 with 100 percent funded by CMS/HHS. The contents are those of CalRHT and do not necessarily represent the official views of, nor an endorsement, by CMS/HHS, or the U.S. Government.*

# CalRHT Program

2026 – 2031



The California Rural Health Transformation (CalRHT) program vision is a **connected, resilient rural health system** in which every rural Californian can access timely, person-centered primary, maternal, specialty, chronic condition, and behavioral health care close to home, **supported by a sustainable workforce, modern technology and data infrastructure.**

CalRHT will expand regional care collaboratives and partnerships; apply evidence-based care; deploy tools that work in low resource settings; and invest in local readiness and health care services.

# Open Applications



**CALIFORNIA**  
RURAL HEALTH TRANSFORMATION



# Accelerator Partners

FUNDING AVAILABLE – BUDGET PERIOD 1

# \$39M

Up to \$8M per award • 5-25 organizations or partners



## WHO'S ELIGIBLE

Organizations or regional partnerships implementing evidence-based care, telehealth, interoperability, and workforce alignment.

### APPLICATION TYPE

Rolling

### KEY DATES

Grant Guide available: early-July | Application opens: mid-July

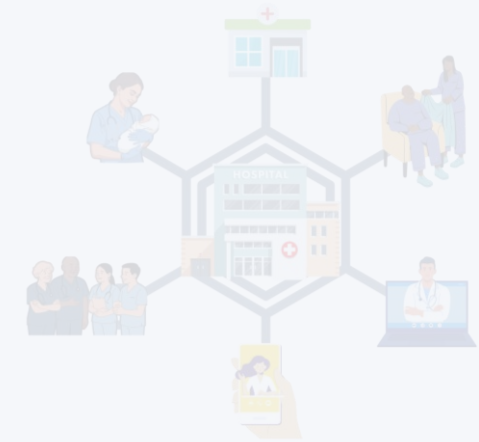


# Accelerator Partners

FUNDING AVAILABLE – BUDGET PERIOD 1

# \$39M

Up to \$8M per award • 5-25 organizations or partners



## WHO'S ELIGIBLE

Organizations or regional partnerships implementing evidence-based care, telehealth, interoperability, and workforce alignment.

**APPLICATION TYPE**  
Rolling

## KEY DATES

Grant Guide available: early-July | Application opens: mid-July



## APPLICATION TYPE, EXPLAINED

APPLICATION TYPE

# Rolling

### WHAT "ROLLING" MEANS

Applications are accepted and reviewed continuously, on an ongoing basis, rather than during a single fixed window.

### What this means for applicants



#### No single deadline

Submit application as soon as you're ready – there's no need to wait for a fixed cycle.



#### Reviewed as received

Applications are evaluated in the order they come in, not all at once after a deadline.



#### Apply early

Funding can be awarded before the window closes, so earlier applications have an advantage.

# Workforce Development Recruitment, Retention and Relocation

FUNDING AVAILABLE – BUDGET PERIOD 1

# \$54M

For up to 40 organizations



## WHO'S ELIGIBLE

Regional collaborations, facilities and organizations with their existing rural health workforce and recruiting new health workforce.

## APPLICATION TYPE

Fixed

## KEY DATES

Grant Guide: early-July | Application opens: mid-July | Closes 30 days after opening



# Rural Provider Recruitment, Retention and Relocation

FUNDING AVAILABLE – BUDGET PERIOD 1

# \$54M

For up to 40 organizations



## WHO'S ELIGIBLE

Regional collaborations, facilities and organizations with their existing rural health workforce and recruiting new health workforce.

## APPLICATION TYPE

**Fixed**

## KEY DATES

Grant Guide: early-July | Application opens: mid-July | Closes 30 days after opening



## APPLICATION TYPE, EXPLAINED

APPLICATION TYPE

# Fixed

### WHAT "FIXED" MEANS

Standard application and review process with an open and close date.

### What this means for applicants



#### Fixed application dates

The RFA will remain open for a minimum of 30 days. Specific close date(s) will be provided once the RFA is released.



#### Reviewed collectively

Applications will be reviewed collectively after the submission deadline.



#### Evaluation

Funding decisions are made upon comprehensive evaluation of all applications.

# EHR Modernization Grants

FUNDING AVAILABLE – BUDGET PERIOD 1

# \$11.6M

Up to 18 grants • \$2M maximum award



## WHO'S ELIGIBLE

Hospitals, clinics, tribal entities and other provider service sites in rural areas.

### APPLICATION TYPE

Rolling

### KEY DATES

Grant Guide: early-July | Application opens: mid-July

# CalRHT Program Grants

## Key Dates



### Applications

Summer 2026

- Begin release of Request for Applications



### Selection

Summer 2026

- CalRHT awardees submitted for CMS review
- HCAI announcements of CalRHT awardee selection



### CMS Review

Summer – Fall 2026

- CMS authorizes fund use for grant subawards
- HCAI verifies award eligibility



### Grant Funding

Summer – Fall 2026

- CalRHT begins disbursement of grants
- Awardees must use funds by Sep 30, 2027



# Next Steps

- Review the Grant Guides and Request for Applications as soon as they are released
- Begin preparing application materials
- Establish a Unique Entity Identifier (UEI) in <https://sam.gov/> if not already complete
- Confirm your <https://sam.gov/> registration is up-to-date
- Visit the CalRHT webpage (<https://hcai.ca.gov/rural-health/calrht>) for current information and to sign up for the CalRHT mailing list
- Participate in engagement opportunities, including webinars and office hours
- Ask questions:
  - Call 888-CAL-RHTP
  - Submit inquiries to [Info@calruralhealth.org](mailto:Info@calruralhealth.org)



**Thank You!**