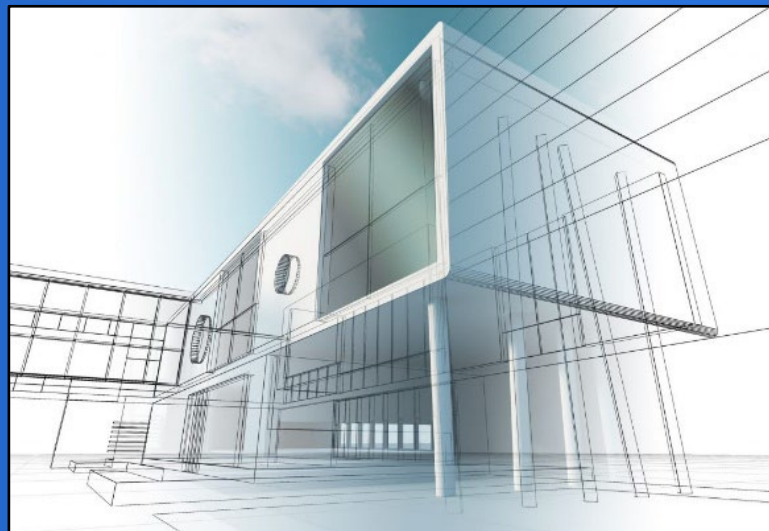


# HBSB Codes and Processes Committee 2027 Triennial Code Cycle update and timeline July 9, 2026



# OSHPD 2027 Timeline and HBSB Meetings

## DUE TO CBSC

**Feb 2027 CBSC  
Coordinating Council  
meeting**

**May 2027  
Submit all Parts of T-24**

## HCAI/OSHPD INTERNAL TIMELINE

**June – September 2026 identify code changes**

**September 2026 OSHPD DD & DDC review/approve**

## REVIEW BY HBSB/COMMITTEES

**Aug. 26, 2026 (Struct & Non-Struct) CAC, CBC Vol. 2 and CEBC**

**Oct. 15, 2026 (Codes & Processes) CAC, CBC Vol. 1, CEnC, CMC and CPC**

**Dec. 9-10, 2026 HBSB Full Board meeting**

# ACTION ITEMS

- Review Updated Reference Standards
- Attend National Codes and Standards committees
- Assess New/Recent Legislation
- Ongoing list of T-24 questions, clarifications
  - [regsunit@hcai.ca.gov](mailto:regsunit@hcai.ca.gov)
- Stakeholder outreach
- Coordinate with state agencies (DSA & SFM)

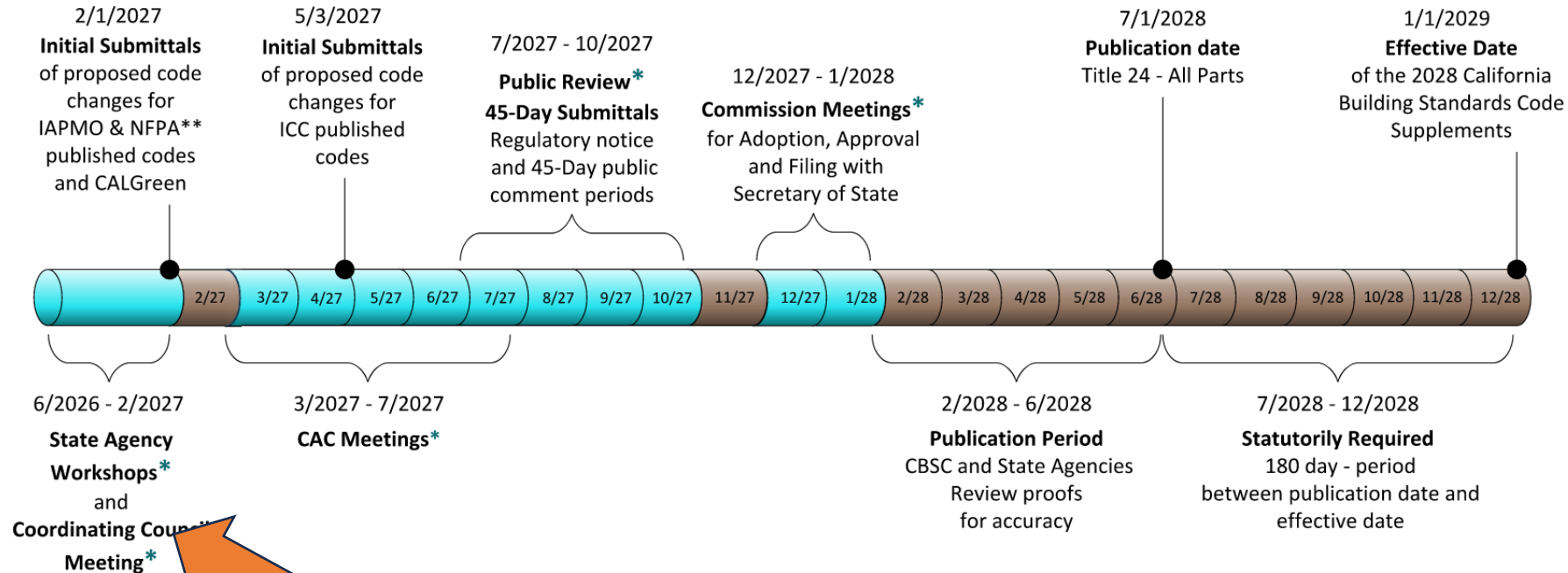


# 2027 Triennial Code Adoption Cycle

2028 California Building Standards Code, Title 24  
Effective January 1, 2029

## California Building Standards Commission

\*Public Participation Opportunity



### Code Advisory Committees (CAC):

SDLF – Structural Design / Lateral Forces  
PEME – Plumbing, Electrical, Mechanical & Energy  
HF – Health Facilities  
GREEN – Green Building  
BFO – Building, Fire & Other  
ACCESS – Accessibility

### Model Code Publishers:

ICC – International Code Council  
IAPMO – International Association of Plumbing and Mechanical Officials  
NFPA – National Fire Protection Association  
\*\*NEC resubmittal if necessary



dgs.ca.gov/BSC  
(916) 263-0916

Rev. 03/2026

All dates are subject to change

- May 2027 Submit all Parts to CBSC

- Publication July 1, 2028

- Effective Date: Jan 1, 2029

- [2027 Intervening Cycle](#)

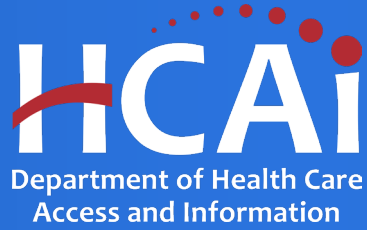
## **SUBSCRIBE TO CBSC'S MAILING LIST**

Stay in touch with CBSC and receive meeting and public comment period notices, information bulletins, quarterly newsletters and more! Add your email address to our mailing list by visiting [DGS' govDelivery Subscription Service](#) webpage. After submitting your email, be sure to select the "CBSC Communications" topic on the next page. View our [Privacy Policy](#) for more information.

[www.dgs.ca.gov/BSC/Contact](http://www.dgs.ca.gov/BSC/Contact)

CBSC Rulemaking page

<https://www.dgs.ca.gov/BSC/Rulemaking/2025-Intervening-Cycle>



# California Administrative Code, Part 1

## Potential Code Changes

# Miscellaneous Items

- Updating selected definitions to align with other parts of the code
- Various editorial fixes

## AB 130 Items Carrying Over

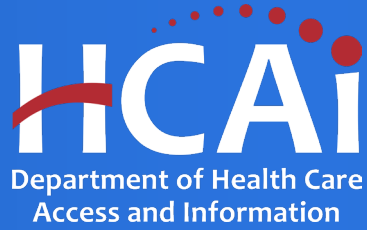
- 7-119(c)(9) Add Outpatient Behavioral Health Observation Units to services that require Patient Safety Risk Assessments

# Chapter 7

- Clarify roles of geotechnical reports versus pre-submittal meetings when locking in applicable code cycles
- Confirm primary structural engineer review of structural component shop drawings
- Coordinate administrative requirements for healthcare facilities with proposed 2027 California Energy Code revisions
- Clarifying relationship between local approvals and final permit applications
- Clarifying time frames required for completing plan review applications
- Clarify office acceptance of changes to TIO programs

# Chapter 7, con't

- Clarify requirements between structural tests vs structural special inspections
- Provide requirements for project close-out procedures and documents
- Connect requirements for contracted work shown on approved documents with a Notice of Violation as described in CBC Section 114 and Stop Work Order in CBC Section 115.
- Clarifying and defining IOR roles, responsibilities, and duties:
  - Reporting IOR availability in applications to hospitals and DPORs
  - Update distribution lists for field records and verified reports
  - Clarify procedures for replacing IOR or IOR firms
  - Accounting for disruptions to deliveries of final verified reports
  - Standardize IOR-completed deviation notices
  - Update language regarding fees for participating in IOR program



# California Building Code, Part 2 Vol. 1

## Potential Code Changes

# Miscellaneous code changes

- Chapters 5, 7, 6, 9,10,17 – Coordinate SFM amendments that impact I-2 facilities
- Provide proper code pointers from OSHPD 1 and 5 facilities to OSHPD 3 psychology clinics as appropriate
- Editorial, grammatical, organizational changes throughout

# Chapter 1224 [OSHPPD 1]

- Pharmacy:
  - Adjust location of eye wash stations
  - Determine appropriate location of staff support areas
  - Complete coordination with new BOP terminology and reference documents
- Central Sterile Supply
  - Update terminology with national FGI standards for types of spaces
  - Confirm if new standards are needed to align with revised AORN standards

# Chapter 1224 [OSHPPD 1]

- Imaging:
  - Provide interventional imaging with a Class 2 option and remove default to Class 3/Hybrid OR
  - Clarify imaging equipment rooms may not open directly into restricted areas/rooms
  - Clarify conditions when doors and alcoves in control rooms may be omitted
  - Coordinate size of cardiac cath procedure rooms with Title 22 requirements
  - Align MRI requirement for gauss lines with updated CAR and FGI standards

# Chapter 1224 [OSHDPD 1]

- Consider specifying requirements for a triage area in an OB unit
- Consider adding requirements for protective environment rooms for Special Oncology Units
- Consider the possibility of a combination AIR and PE room
- Identify med gas outlet requirements in a Fast Track Room in the ED
- Adjust door width from ambulance bay to trauma room to align with FGI standards
- Determine if additional changes are needed for trauma rooms in comprehensive EDs
- Balancing a proposed requirement for ICU's to have an on-call room(s) in small and rural hospitals

# Chapter 1224 [OSHPD 1]

- Clarifying language for helipads on parking structures in OSHPD jurisdiction
- Rightsizing nurse call requirements in support areas
- Defining what constitutes a “building” in the code, and how those buildings are broken into smaller units with fire walls
- Add a provision for sleeping furniture for a parent or visitor in pediatric ICU rooms

# 1224 AB-130 Items Carrying Over

- Definitions: Revised definition of lounge chair to support proposed outpatient behavioral health regulations
- 1224.4.11.2.2: Pharmacy and central sterile flooring shall be able to withstand wet cleaning
- 1224.15.2.3: Surgical space furnishings shall be able to withstand wet cleaning and inhibit mold growth
- 1224.15.3.2: Align the surgical supervisor's office requirements with those requirements for the obstetrical service space (currently permitted to be shared)
- 1224.17.3: Make specimen collection facilities in hospitals optional for inpatient use

# 1224 AB-130 Items Carrying Over, cont.

- 1224.28.4.7: Allow interventional imaging's reading room to be in a remote location within the hospital
- 1224.33.2.2: Allow EDs to use mobile devices for documentation
- 1224.33.2.7.1: Aligning patient station requirements with proposed outpatient behavioral health regulations
- 1224.39.6.4.4: Requiring a 1:6 toilet room to patient station ratio in outpatient observation units in units that do not provide individual patient toilet rooms
- 1224.39.7: Proposed requirements for Outpatient Behavioral Health Observation Units

# Chapter 1225 [OSHDPD 2]

- Verify Title 22 requirements for special treatment programs within OSHDPD 2 facilities
- Incorporate Title 22 requirements for pharmacies and other drug distribution spaces
- Provide requirements for elevators in SNFs; 1225 currently silent
- Editorial, grammatical, organizational changes throughout

# Chapter 1226 [OSHPD 3]

- Clarify and/or provide code pointers from 1224 and 1228 to psychology clinics in 1226
- Further specify which clinic types may use an existing allowance that permits a waiting room to share the patient toilet room in clinics with three or less exam/treatment rooms

## 1226 AB-130 Items Carrying Over

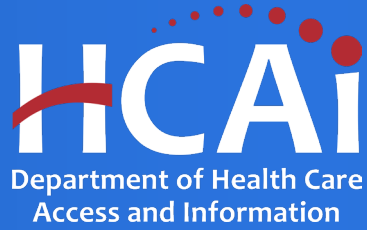
- 1226.4.7.3: Applying minimum STC ratings in partitions to all clinic types

# Chapter 1228 [OSHDPD 5]

- Determine if further clarifications regarding Chemical Dependency Recovery Hospitals are needed.
- Require that doors at patient rooms and central bathing facilities must be anti-barricade or swing outward.
- Determine if the required AIR room anteroom for psych facilities should be optional
- Consider if dining areas may be open to the corridor
- Right-size requirements for employee support spaces (ie: dressing rooms)
- Correct and clarify referenced requirements for pediatric psychiatric units
- Specifically allow dialysis services to be located within APH's

# 1228 AB-130 Items Carrying Over

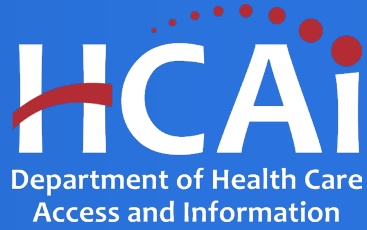
- 1228.4.20: Allow lockable cabinets in activity, dining, recreation, and consultation rooms as long as they are addressed in PSRA's and are anti-ligature



# California Existing Building Code, Part 10 Potential Code Changes

# Part 10 Items

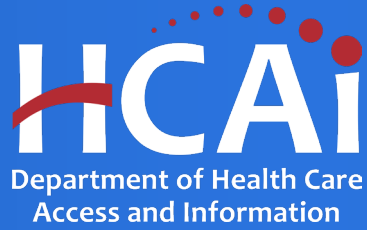
- Miscellaneous editorial corrections
- Limit the area of removal and reinstallation of existing finishes (i.e., ceilings) to 20% before requiring full compliance (coordination with Part 1 CAC)



# California Electrical Code, Part 3

## Potential code changes

### (Previously heard)



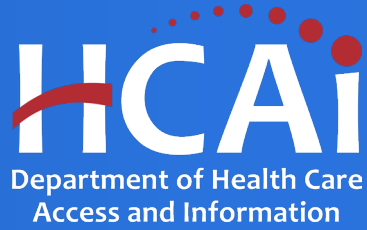
# California Mechanical Code, Part 4 Potential Code Changes

# Part 4 – California Mechanical Code

- Combination AIIR/PE
- Interior noise criteria for mechanical systems
- Pharmacy compounding cooling – essential power
- Outside air calculation – coordinate with 170
- Hydronic piping flexible connection
- Table 4-A updates
- Adopt ASHRAE 170 2025 edition

# Part 4 – California Mechanical Code

- Ventilation rates for NICU treatment room
- Steam piping welding procedures and qualification of welders
- Coordinate OSHPD amendments for ASHRAE 170 onsite fuel supply
- Coordinate Telecommunications room requirements with FGI/NFPA
- Unoccupied turndown requirements for determining occupancy
- Coordinate hazardous exhaust requirements in Chapter 4
- Coordinate Central Sterile Processing with Table 4-A and 1224



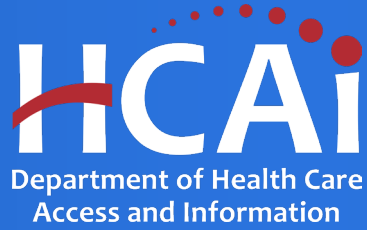
# California Plumbing Code, Part 5 Potential Code Changes

# Part 5 – California Plumbing Code

- Update sensitive rooms requiring special precautions for waste piping
- Move handwashing requirements to chapter 4
- AAMI ST108 requirements for water quality in sterile processing
- Plumbing fixture counts for staff to use FTE's
- Water balance requirements for domestic hot water recirculation
- Hot water branch length based on volume
- Domestic water valve requirements from each fixture to group

# Part 5 – California Plumbing Code

- Evaluate Appendix M water demand calculator for use in Healthcare
- Chapter 11 PVC/ABS amendments to align for subsoil drainage
- Clinic exception for utility sink where clinical sink required
- Revise Cast room scrub sink requirement only for orthopedic work
- Evaluate FGI single source tepid water supply (70-80F)



# California Energy Code, Part 6 HCAI Coordination w/ CEnC

# Part 6 – CEC – Healthcare Proposals

- Healthcare Prototype Enhancements
  - Modifications to the current Healthcare Hospital Prototype
  - New prototype for Skilled Nursing Facilities (SNF)
- Healthcare Exceptions
  - Shut-off and Reset Controls
  - Space Conditioning Zone Controls
  - Fan Control
  - Alterations

<https://title24stakeholders.com/measures/2028-cycle/>

# Proposed Code Change - HVAC

## New Construction

- Modify or remove exceptions for healthcare buildings for new construction requirements in sections 120.2(e), 140.4(d), and 140.4(m).
  - 120.2(e) Shut-off and reset controls for space-conditioning systems. New healthcare requirement to reset to the minimum occupied or unoccupied turndown air flow allowance
  - 140.4(d) Space-conditioning zone controls. New healthcare specific provision to limit volume of air to zone or mixed zone to not exceed minimum allowable levels – limiting simultaneous heating and cooling or VAV to reduce cooled air before reheating
  - 140.4 (m) Fan control. At least two stage fan control for DX > 65 kBtu/h, variable speed fans for VAV systems

# Proposed Code Change Update - Alterations

1. The following blanket exception will be removed.

Existing Buildings – Alterations Exception to Section 141.0: Alterations to healthcare facilities are not required to comply with this Section.

2. Healthcare facilities are required to meet the subsections identified in the table below.

3. The Exceptions will be added to all other individual subsections that are not listed in this table

Section	Requirement	Description
141.0(b)1.A - Roof and Ceiling Insulation	Mandatory	Minimum levels for roof insulation
141.0(b)1.D - Fan Energy Index (FEI)	Mandatory	Achieving a FEI of 1.0 for constant air volume systems and 0.95 for variable air volume systems
141.0(b)1.E- Exterior Windows	Mandatory	Requires replacement windows do not exceed a maximum U-factor of 0.58
141.0(b)2.B- Altered Roof	Prescriptive	Solar reflectance and minimum insulation requirements during roof replacement
141.0(b)2F – New Lighting System	Prescriptive	Spaces with lighting systems installed for the first time shall meet the requirements of Sections 110.9, 130.0, 130.1, 130.2, 130.4, 140.3(c), 140.6 and 140.7.
141.0(b)2I - Altered indoor lighting systems	Prescriptive	Replacement lighting must meet certain lighting power density requirements