

2024 Hospital Seismic Performance Report

AB 1882

AB 1882 Purpose – Services and Performance Ratings

Assembly Bill 1882 requires each general acute care hospital operator to annually report the structural and non-structural performance ratings for each individual hospital building used for providing care, and services housed in each. Hospital operators are responsible to provide their report to specific public entities and hospital stakeholders until seismic compliance is achieved for all buildings.

This document includes a brief explanation of Structural and Non-structural Performance Ratings, along with details about services offered by the hospital. Additionally, it outlines the specific entities and stakeholders to whom the facility is required to submit the report. Furthermore, the document contains the facilities' site plan, building numbers and names, and a comprehensive table detailing the ratings of acute care services housed within each building.

Structural and Non-structural Performance Ratings: The Structural Performance Category (SPC) of a hospital building, akin to bones and muscles in the human body, signifies its primary strength and stability, ranging from the strongest SPC-5 to the weakest SPC-1. Non-structural Performance Category (NPC), like organs in the human body, includes systems and equipment vital for daily operations, rated from functional NPC-5 to system risk to life NPC-1. Both SPC and NPC are crucial, collectively defining a hospital's effectiveness and quality of care.

Acute Care Services: General acute care services are grouped into four categories:

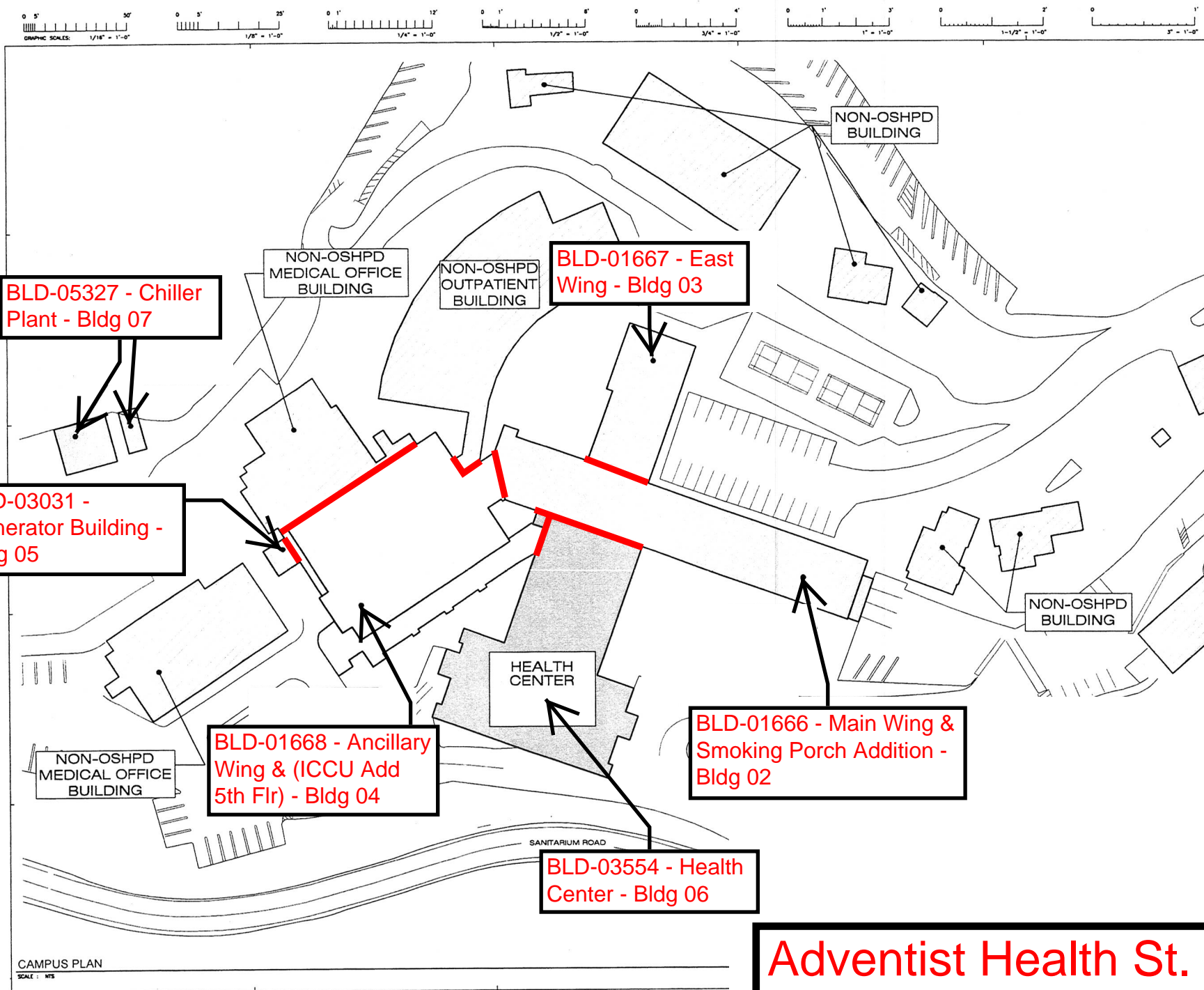
- Required clinical services: Nursing, Surgery, Anesthesia, Imaging, Laboratory, Pharmacy, Dietetic
- Required support services: Administration, Environmental Services, General Stores, Linen, Morgue
- Supplemental services – optional services requiring special licensure: Critical Care, Emergency, Pediatric, Psychiatric, Obstetric, Rehabilitation, Skilled Nursing, others
- Infrastructure – buildings that provide utilities and support circulation: Central Plants, canopies, corridor buildings, tunnels, skybridges

Report Distribution: Hospitals are required to issue reports to the following organizations and stakeholders:

- Local county board of supervisors
- Local city council, if applicable
- Any labor union representing employees working in buildings not fully conforming
- Special district or joint power agencies providing fire and emergency medical services district, if applicable
- Department of Health Care Access and Information
- Board of directors of the hospital
- Local office of emergency services or equivalent
- Office of Emergency Services
- Medical health operational area coordinator

10366 Adventist Health St. Helena

| Bldg Num | Bldg Name | Applicable Year | Nursing Med Surg | Surgical | Anesthesia PACU | Clinical Lab | Imaging Radiological Diagnostic Imaging | Pharmacy | Dietetic | Administrative | Sterile Processing | General Storage | Morgue | Employee Dressing | Housekeeping EVS | Laundry Linen | Special Procedures | ICU CCU PICU | Burn Unit | Neonatal Intensive Care Unit | Pediatric Adolescent Nursing Unit | Psychiatric Nursing | Obstetrics Perinatal Unit | Emergency | Nuclear Medicine | Rehabilitation Therapy | Physical Rehabilitation Nursing Unit | Renal Dialysis | Respiratory | Intermediate Care | Outpatient Services | Skilled Nursing Unit | Central Plant Utility Bldg | Canopies Corridor Buildings Tunnels | Non GAC Uses | |
|---------------------------|-------------------------------------|-----------------|------------------|----------|-----------------|--------------|---|----------|----------|----------------|--------------------|-----------------|--------|-------------------|------------------|---------------|--------------------|--------------|-----------|------------------------------|-----------------------------------|---------------------|---------------------------|-----------|------------------|------------------------|--------------------------------------|----------------|-------------|-------------------|---------------------|----------------------|----------------------------|-------------------------------------|------------------|---|
| BLD-01666 | Main Wing & Smoking Porch Addition | 2024 | X | | | | | X | | X | | X | X | X | X | X | | | | | | X | | X | | X | X | | X | | X | | | | | SPC: 2 NPC: 2 This building does not significantly jeopardize life, but may not be repaired.. |
| BLD-01667 | East Wing | 2024 | | | | | | | | | X | X | | X | X | | | | | | | X | X | | | | | | | | | | | | | SPC: 2 NPC: 2 This building does not significantly jeopardize life, but may not be repaired.. |
| BLD-01668 | Ancillary Wing & (ICCU Add 5th Flr) | 2024 | | X | X | X | X | | | X | | X | | X | X | X | X | X | | | | | | | X | | | | | | | | | | | SPC: 4 NPC: 2 |
| BLD-03031 | Generator Building | 2024 | | | | | | | | | | | | | | | | | | | | | | | | | | | | | | X | | | SPC: 4 NPC: 2 | |
| BLD-03554 | Health Center | 2024 | | | | | | | X | X | | X | | X | X | X | | | | | | | | | | | | | | | | | | | | SPC: 2 NPC: 2 This building does not significantly jeopardize life, but may not be repaired.. |
| BLD-05327 | Chiller Plant | 2024 | | | | | | | | | | | | | | | | | | | | | | | | | | | | | | X | | | | SPC: 5s NPC: 4 |



General Acute Care Hospital Building Services – Glossary

| Service Category | Description |
|--|--|
| <u>Basic Clinical Services</u> | <u>Required for hospital licensure</u> |
| Nursing - General Medical/Surgical | <p>General inpatient nursing bed units.</p> <ul style="list-style-type: none"> Includes post-intensive care or transitional care/telemetry units Excludes specialty nursing units |
| Surgical | <p>Surgery Department -</p> <ul style="list-style-type: none"> Includes patient preparation unit and operating rooms Hybrid operating rooms (in-room CT, MRI, other intraoperative surgery modalities) |
| Anesthesia, Post Anesthesia Care Unit | Post surgery recovery unit |
| Clinical Laboratory | Laboratory services |
| Imaging, Radiological/Diagnostic Imaging | X-Ray, Fluoroscopy, CT, MRI, Ultrasound, Mammography |
| Pharmacy | <p>Main Pharmacy</p> <ul style="list-style-type: none"> Excludes in-unit medication rooms |
| Dietetic | <p>Patient meal preparation kitchen, servery & dining</p> <ul style="list-style-type: none"> Includes emergency food storage location Excludes snack bars, unit food storage & break rooms |

| <u>Basic Support Services</u> | <u>Required for hospital operations</u> |
|--|--|
| Administration | Main hospital administration location <ul style="list-style-type: none"> Excludes department administration |
| Sterile Processing | Main instrument sterilization, reprocessing and sterile storage |
| General Storage | Main Materials Management single location <ul style="list-style-type: none"> Includes loading dock, gas storage and similar general storage locations Excludes unit and specialty storage uses |
| Morgue | Includes morgue, autopsy, pathology and body holding. Not required for all facilities. |
| Employee Dressing | Locker rooms |
| Housekeeping/Environmental Services | Main Environmental Services Office location |
| Laundry/Linen | Laundry, or Main Linen Storage location if using offsite laundry services |
| <u>Supplemental Services</u> | <u>Optional clinical services</u> |
| Special Procedures | Cardiac Catheterization Labs, Interventional Radiology, Angiography |
| Intensive Care/Coronary Care/Pediatric ICU | Critical care inpatient nursing units for general, cardiovascular or pediatric patients |

| | |
|--------------------------------------|---|
| Burn Unit | Specialized inpatient critical care unit with specialized capability to treat burns |
| Neonatal Intensive Care Unit (NICU) | Specialized intensive care unit for newborns |
| Pediatric/Adolescent Nursing Unit | Principal bed type for Children's' Hospital or specialized unit if in a general acute care hospital |
| Psychiatric Nursing | Specialized inpatient unit for acute psychiatric patients |
| Obstetrics/Perinatal Unit | <p>Specialized inpatient units for birthing.</p> <ul style="list-style-type: none"> Includes labor rooms, delivery rooms, C-Section rooms, post-partum rooms, Labor, Delivery and Recovery Rooms (LDR's), Labor, Delivery, Recovery & Post-Partum Rooms (LDRP's) and well-baby nurseries |
| Emergency | <p>Emergency Departments</p> <ul style="list-style-type: none"> Includes Trauma Rooms |
| Nuclear Medicine | Specialized inpatient and outpatient imaging and cardiac testing |
| Rehabilitation Therapy | <p>Therapy services for inpatients and outpatients</p> <ul style="list-style-type: none"> Includes Physical Therapy (PT), Occupational Therapy (OT) and Speech Therapy |
| Physical Rehabilitation Nursing Unit | Specialized inpatient unit for Acute Rehabilitation patients with therapy to support return to normal daily living |

| | |
|-------------------------------------|---|
| Renal Dialysis | <p>Centralized inpatient/outpatient unit for providing dialysis care.</p> <ul style="list-style-type: none"> Excludes bedside dialysis care |
| Respiratory Care | Respiratory Care department's main office and specialized storage |
| Intermediate Care | <p>Specialized long-term inpatient care for developmentally disabled persons or those not requiring skilled nursing. Uncommon in general acute care hospitals</p> |
| Outpatient Services | Unspecified licensed outpatient services provided in a hospital building |
| Skilled Nursing Care | Post-acute long term skilled nursing units |
| <u>Infrastructure</u> | <u>Support for site operations</u> |
| Central Plan/Utility Buildings | <p>Buildings providing principal utility origination</p> <ul style="list-style-type: none"> Includes central plants, boiler, electrical and chiller buildings, utility yards, bulk oxygen vessels, pump houses, etc. Includes main computer server rooms Excludes distributed utility closets |
| Canopies/Corridor Buildings/Tunnels | <p>Hospital buildings supporting circulation. Includes</p> <ul style="list-style-type: none"> structurally free-standing canopies buildings that only house connecting corridors underground tunnels <p>Excludes:</p> <ul style="list-style-type: none"> Canopies attached to other structures Corridors in buildings with other occupiable uses |