

# 2023 Hospital Seismic Performance Report

## AB 1882

### **AB 1882 Purpose – Services and Performance Ratings**

Assembly Bill 1882 requires each general acute care hospital operator to annually report the structural and non-structural performance ratings for each individual hospital building used for providing care, and services housed in each. Hospital operators are responsible to provide their report to specific public entities and hospital stakeholders until seismic compliance is achieved for all buildings.

This document includes a brief explanation of Structural and Non-structural Performance Ratings, along with details about services offered by the hospital. Additionally, it outlines the specific entities and stakeholders to whom the facility is required to submit the report. Furthermore, the document contains the facilities' site plan, building numbers and names, and a comprehensive table detailing the ratings of acute care services housed within each building.

**Structural and Non-structural Performance Ratings:** The Structural Performance Category (SPC) of a hospital building, akin to bones and muscles in the human body, signifies its primary strength and stability, ranging from the strongest SPC-5 to the weakest SPC-1. Non-structural Performance Category (NPC), like organs in the human body, includes systems and equipment vital for daily operations, rated from functional NPC-5 to system risk to life NPC-1. Both SPC and NPC are crucial, collectively defining a hospital's effectiveness and quality of care.

**Acute Care Services:** General acute care services are grouped into four categories:

- Required clinical services: Nursing, Surgery, Anesthesia, Imaging, Laboratory, Pharmacy, Dietetic
- Required support services: Administration, Environmental Services, General Stores, Linen, Morgue
- Supplemental services – optional services requiring special licensure: Critical Care, Emergency, Pediatric, Psychiatric, Obstetric, Rehabilitation, Skilled Nursing, others
- Infrastructure – buildings that provide utilities and support circulation: Central Plants, canopies, corridor buildings, tunnels, skybridges

**Report Distribution:** Hospitals are required to issue reports to the following organizations and stakeholders:

- Local county board of supervisors
- Local city council, if applicable
- Any labor union representing employees working in buildings not fully conforming
- Special district or joint power agencies providing fire and emergency medical services district, if applicable
- Department of Health Care Access and Information
- Board of directors of the hospital
- Local office of emergency services or equivalent
- Office of Emergency Services
- Medical health operational area coordinator

## 11090 Emanuel Medical Center

Bldg Num	Bldg Name	Applicable Year	Nursing Med Surg	Surgical	Anesthesia PACU	Clinical Lab	Imaging Radiological Diagnostic Imaging	Pharmacy	Dietetic	Administrative	Sterile Processing	General Storage	Morgue	Employee Dressing	Housekeeping EVS	Laundry Linen	Special Procedures	ICU CCU PICU	Burn Unit	Neonatal Intensive Care Unit	Pediatric Adolescent Nursing Unit	Psychiatric Nursing	Obstetrics Perinatal Unit	Emergency	Nuclear Medicine	Rehabilitation Therapy	Physical Rehabilitation Nursing Unit	Renal Dialysis	Respiratory	Intermediate Care	Outpatient Services	Skilled Nursing Unit	Central Plant Utility Bldg	Canopies Corridor Buildings Tunnels	Non GAC Uses	
<a href="#">BLD-01604</a>	Main Building - East Wing	2023			X														X			X														SPC: 2 NPC: 2 This building does not significantly jeopardize life, but may not be repaired..
<a href="#">BLD-01605</a>	Main Building - West Wing	2023	X							X		X		X	X	X										X										SPC: 2 NPC: 2 This building does not significantly jeopardize life, but may not be repaired..
<a href="#">BLD-01606</a>	Mental Health Addition	2023								X																										SPC: 2 NPC: 2 This building does not significantly jeopardize life, but may not be repaired..
<a href="#">BLD-01607</a>	Critical Care Addition	2023	X														X																			SPC: 2 NPC: 2 This building does not significantly jeopardize life, but may not be repaired..
<a href="#">BLD-01608</a>	Diagnostic Imaging/ ER Emergenc.	2023					X																													SPC: 4 NPC: 2
<a href="#">BLD-01609</a>	Nursing Unit Addition	2023	X			X		X																				X	X							SPC: 4 NPC: 2

## 11090 Emanuel Medical Center

Bldg Num	Bldg Name	Applicable Year	Nursing Med Surg	Surgical	Anesthesia PACU	Clinical Lab	Imaging Radiological Diagnostic Imaging	Pharmacy	Dietetic	Administrative	Sterile Processing	General Storage	Morgue	Employee Dressing	Housekeeping EVS	Laundry Linen	Special Procedures	ICU CCU PICU	Burn Unit	Neonatal Intensive Care Unit	Pediatric Adolescent Nursing Unit	Psychiatric Nursing	Obstetrics Perinatal Unit	Emergency	Nuclear Medicine	Rehabilitation Therapy	Physical Rehabilitation Nursing Unit	Renal Dialysis	Respiratory	Intermediate Care	Outpatient Services	Skilled Nursing Unit	Central Plant Utility Bldg	Canopies Corridor Buildings Tunnels	Non GAC Uses	
<a href="#">BLD-01610</a>	Engineering Addition	2023																														X			SPC: 4 NPC: 2	
<a href="#">BLD-01611</a>	Central Supply Addition	2023									X																								SPC: 4 NPC: 2	
<a href="#">BLD-01612</a>	Central Plant Addition	2023																														X			SPC: 4 NPC: 2	
<a href="#">BLD-01613</a>	O.R. / G.I. Addition	2023		X																										X					SPC: 5 NPC: 2	
<a href="#">BLD-01614</a>	Walk-In Freezer	2023							X																									Walk in Freezer	SPC: 5 NPC: 2	
<a href="#">BLD-01615</a>	Dietary Addition	2023							X																										SPC: 5 NPC: 2	

## 11090 Emanuel Medical Center

Bldg Num	Bldg Name	Applicable Year	Nursing Med Surg	Surgical	Anesthesia PACU	Clinical Lab	Imaging Radiological Diagnostic Imaging	Pharmacy	Dietetic	Administrative	Sterile Processing	General Storage	Morgue	Employee Dressing	Housekeeping EVS	Laundry Linen	Special Procedures	ICU CCU PICU	Burn Unit	Neonatal Intensive Care Unit	Pediatric Adolescent Nursing Unit	Psychiatric Nursing	Obstetrics Perinatal Unit	Emergency	Nuclear Medicine	Rehabilitation Therapy	Physical Rehabilitation Nursing Unit	Renal Dialysis	Respiratory	Intermediate Care	Outpatient Services	Skilled Nursing Unit	Central Plant Utility Bldg	Canopies Corridor Buildings Tunnels	Non GAC Uses	
<a href="#">BLD-01616</a>	Surgery Addition	2023		X																																SPC: 5 NPC: 2
<a href="#">BLD-01617</a>	Utility Tunnel	2023																															X			SPC: N/A NPC: 2
<a href="#">BLD-01618</a>	Exit Passage Way	2023																															X			SPC: 2 NPC: 2 This building does not significantly jeopardize life, but may not be repaired..
<a href="#">BLD-03229</a>	Cardio Vascular Surgery Addition	2023					X										X								X											SPC: 5 NPC: 4
<a href="#">BLD-03230</a>	ED Addition - North West Tower	2023	X										X					X						X												SPC: 5 NPC: 4
<a href="#">BLD-03231</a>	Obstetrics Expansion	2023																					X													SPC: 5 NPC: 4

## 11090 Emanuel Medical Center

Bldg Num	Bldg Name	Applicable Year	Nursing Med Surg	Surgical	Anesthesia PACU	Clinical Lab	Imaging Radiological Diagnostic Imaging	Pharmacy	Dietetic	Administrative	Sterile Processing	General Storage	Morgue	Employee Dressing	Housekeeping EVS	Laundry Linen	Special Procedures	ICU CCU PICU	Burn Unit	Neonatal Intensive Care Unit	Pediatric Adolescent Nursing Unit	Psychiatric Nursing	Obstetrics Perinatal Unit	Emergency	Nuclear Medicine	Rehabilitation Therapy	Physical Rehabilitation Nursing Unit	Renal Dialysis	Respiratory	Intermediate Care	Outpatient Services	Skilled Nursing Unit	Central Plant Utility Bldg	Canopies Corridor Buildings Tunnels	Non GAC Uses	
<a href="#">BLD-03232</a>	Oxygen Tank Yard	2023																														X			SPC: N/A NPC: 2	
<a href="#">BLD-03690</a>	Exit Passage Way - Part II	2023																															X		SPC: 2 NPC: 2 This building does not significantly jeopardize life, but may not be repaired..	
<a href="#">BLD-03691</a>	Exit Passage Way - Part III	2023																															X		SPC: 2 NPC: 2 This building does not significantly jeopardize life, but may not be repaired..	
<a href="#">BLD-03813</a>	Exit Passage Way - Part IV	2023																															X		SPC: 2 NPC: 2 This building does not significantly jeopardize life, but may not be repaired..	



# Emanuel Medical Center Facility No. 11090

10/25/2021

BLD-03230 - ED Addition  
- North West Tower -  
Bldg 17

BLD-01609 - Nursing Unit  
Addition - Bldg 06

BLD-01608 - Diagnostic  
Imaging / ER Emergency  
- Bldg 05

BLD-03231 - Obstetrics  
Expansion - Bldg 16

BLD-03229 - Cardio  
Vascular Surgery Addition  
- Bldg 16

BLD-01613 - O.R. / G.I.  
Addition - Bldg 10

BLD-01611 - Central  
Supply Addition - Bldg 08

BLD-01616 - Surgery  
Addition - Bldg 13

BLD-01604 - Main Building -  
East Wing - Bldg 01

BLD-01615 - Dietary  
Addition - Bldg 12

BLD-01614 - Walk-In  
Freezer - Bldg 11

BLD-01617 - Utility Tunnel  
- Bldg 14

BLD-01607 - Critical Care  
Addition - Bldg 04

BLD-01610 - Engineering  
Addition - Bldg 07

BLD-01612 Central Plant  
Addition - Bldg 09

BLD-01618 - Exit Passage  
Way - Bldg 15

BLD-03813 - Exit Passage  
Way - Part IV - Bldg 15C

BLD-03691 - Exit Passage  
Way - Part III - Bldg 15B

BLD-03690 - Exit Passage  
Way - Part II - Bldg 15A

BLD-01606 - Mental  
Health Addition - Bldg 03

BLD-01605 - Main  
Building - West Wing -  
Bldg 02

CENTRAL SUPPLY ADD.  
1985  
BUILDING 1  
HS840013

ER WAITING  
1985  
BUILDING 5a  
OSHPO NO. SS041841-50

NURSING UNIT ADDITION  
1975  
BUILDING 5  
OSHPO NO. H00200

OBSTETRICS  
2001  
BUILDING 16  
HS-020139

MAIN BLDG - EAST WING  
1966  
BUILDING 1  
OSHPO NO. N/A

MAIN BLDG - WEST WING  
1966  
BUILDING 2  
OSHPO NO. N/A

CENTRAL SUPPLY ADD.  
1985  
BUILDING  
HS840013

O.R. ADDITION  
1994  
BUILDING 8a  
OSHPO NO. HS932008

O.R./GI LAB ADDITION  
1994  
BUILDING 13  
OSHPO NO. HS932008

CRITICAL CARE (1)  
1971  
BUILDING 2  
OSHPO NO. N/A

DIETARY ADDITION  
1997  
BUILDING 12  
HS941121

DIETARY ADDITION  
1985  
BUILDING 11  
HS941121

ENG. ADDITION  
1985  
BUILDING 7  
OSA NO. 1166

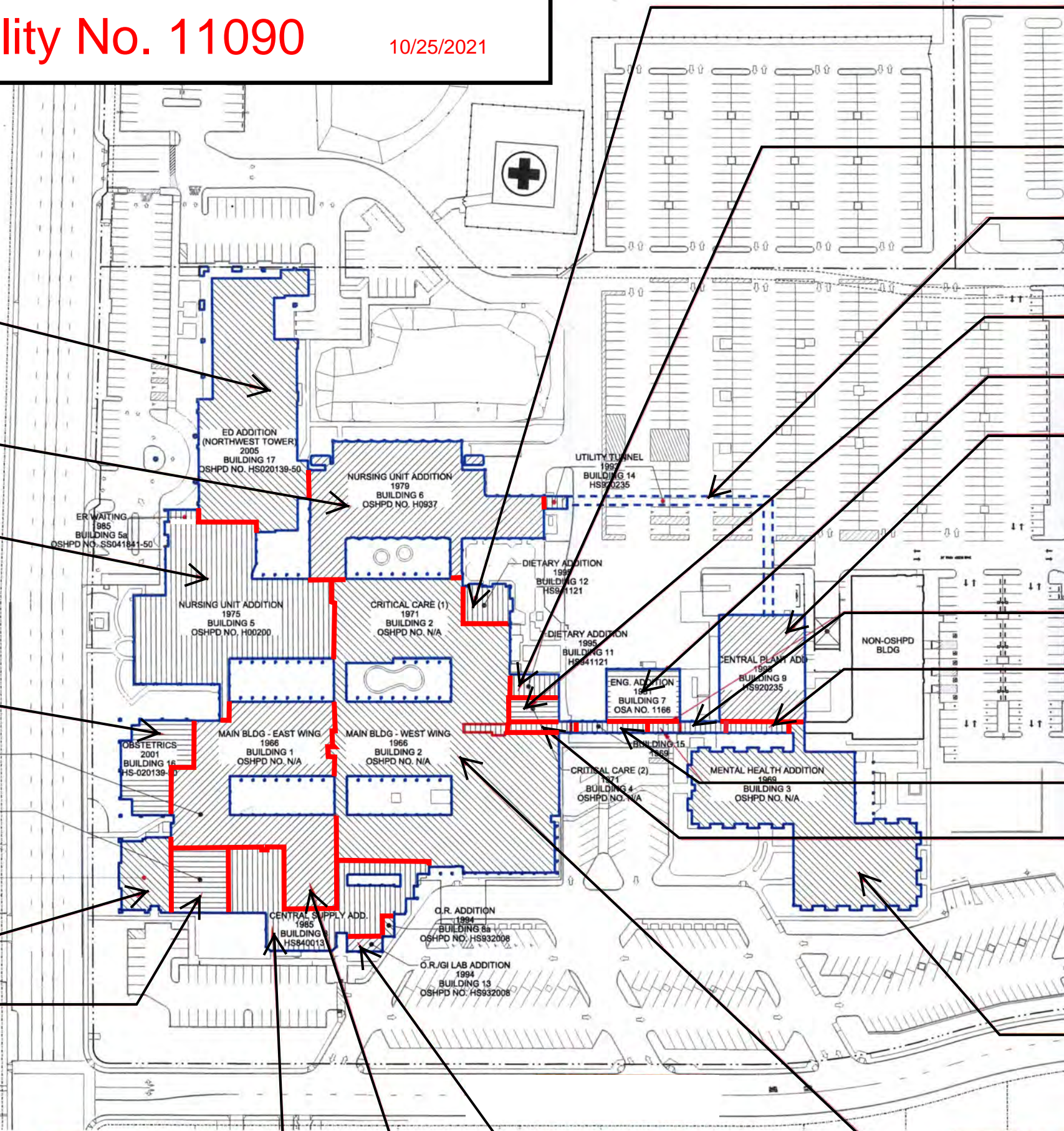
CRITICAL CARE (2)  
1971  
BUILDING 4  
OSHPO NO. N/A

CENTRAL PLANT ADD.  
1985  
BUILDING 9  
HS920235

MENTAL HEALTH ADDITION  
1969  
BUILDING 3  
OSHPO NO. N/A

NON-OSHPO  
BLDG

UTILITY TUNNEL  
1987  
BUILDING 14  
HS920235





## General Acute Care Hospital Building Services – Glossary

Service Category	Description
<b><u>Basic Clinical Services</u></b>	<b><u>Required for hospital licensure</u></b>
Nursing - General Medical/Surgical	General inpatient nursing bed units. <ul style="list-style-type: none"> <li>Includes post-intensive care or transitional care/telemetry units</li> <li>Excludes specialty nursing units</li> </ul>
Surgical	Surgery Department - <ul style="list-style-type: none"> <li>Includes patient preparation unit and operating rooms</li> <li>Hybrid operating rooms (in-room CT, MRI, other intraoperative surgery modalities)</li> </ul>
Anesthesia, Post Anesthesia Care Unit	Post surgery recovery unit
Clinical Laboratory	Laboratory services
Imaging, Radiological/Diagnostic Imaging	X-Ray, Fluoroscopy, CT, MRI, Ultrasound, Mammography
Pharmacy	Main Pharmacy <ul style="list-style-type: none"> <li>Excludes in-unit medication rooms</li> </ul>
Dietetic	Patient meal preparation kitchen, servery & dining <ul style="list-style-type: none"> <li>Includes emergency food storage location</li> <li>Excludes snack bars, unit food storage &amp; break rooms</li> </ul>

<b><u>Basic Support Services</u></b>	<b><u>Required for hospital operations</u></b>
Administration	Main hospital administration location <ul style="list-style-type: none"> <li>Excludes department administration</li> </ul>
Sterile Processing	Main instrument sterilization, reprocessing and sterile storage
General Storage	Main Materials Management single location <ul style="list-style-type: none"> <li>Includes loading dock, gas storage and similar general storage locations</li> <li>Excludes unit and specialty storage uses</li> </ul>
Morgue	Includes morgue, autopsy, pathology and body holding. Not required for all facilities.
Employee Dressing	Locker rooms
Housekeeping/Environmental Services	Main Environmental Services Office location
Laundry/Linen	Laundry, or Main Linen Storage location if using offsite laundry services
<b><u>Supplemental Services</u></b>	<b><u>Optional clinical services</u></b>
Special Procedures	Cardiac Catheterization Labs, Interventional Radiology, Angiography
Intensive Care/Coronary Care/Pediatric ICU	Critical care inpatient nursing units for general, cardiovascular or pediatric patients



Burn Unit	Specialized inpatient critical care unit with specialized capability to treat burns
Neonatal Intensive Care Unit (NICU)	Specialized intensive care unit for newborns
Pediatric/Adolescent Nursing Unit	Principal bed type for Children's' Hospital or specialized unit if in a general acute care hospital
Psychiatric Nursing	Specialized inpatient unit for acute psychiatric patients
Obstetrics/Perinatal Unit	<p>Specialized inpatient units for birthing.</p> <ul style="list-style-type: none"> <li>Includes labor rooms, delivery rooms, C-Section rooms, post-partum rooms, Labor, Delivery and Recovery Rooms (LDR's), Labor, Delivery, Recovery &amp; Post-Partum Rooms (LDRP's) and well-baby nurseries</li> </ul>
Emergency	<p>Emergency Departments</p> <ul style="list-style-type: none"> <li>Includes Trauma Rooms</li> </ul>
Nuclear Medicine	Specialized inpatient and outpatient imaging and cardiac testing
Rehabilitation Therapy	<p>Therapy services for inpatients and outpatients</p> <ul style="list-style-type: none"> <li>Includes Physical Therapy (PT), Occupational Therapy (OT) and Speech Therapy</li> </ul>
Physical Rehabilitation Nursing Unit	Specialized inpatient unit for Acute Rehabilitation patients with therapy to support return to normal daily living

Renal Dialysis	<p>Centralized inpatient/outpatient unit for providing dialysis care.</p> <ul style="list-style-type: none"> <li>Excludes bedside dialysis care</li> </ul>
Respiratory Care	Respiratory Care department's main office and specialized storage
Intermediate Care	<p>Specialized long-term inpatient care for developmentally disabled persons or those not requiring skilled nursing. Uncommon in general acute care hospitals</p>
Outpatient Services	Unspecified licensed outpatient services provided in a hospital building
Skilled Nursing Care	Post-acute long term skilled nursing units
<b><u>Infrastructure</u></b>	<b><u>Support for site operations</u></b>
Central Plan/Utility Buildings	<p>Buildings providing principal utility origination</p> <ul style="list-style-type: none"> <li>Includes central plants, boiler, electrical and chiller buildings, utility yards, bulk oxygen vessels, pump houses, etc.</li> <li>Includes main computer server rooms</li> <li>Excludes distributed utility closets</li> </ul>
Canopies/Corridor Buildings/Tunnels	<p>Hospital buildings supporting circulation. Includes</p> <ul style="list-style-type: none"> <li>structurally free-standing canopies</li> <li>buildings that only house connecting corridors</li> <li>underground tunnels</li> </ul> <p>Excludes:</p> <ul style="list-style-type: none"> <li>Canopies attached to other structures</li> <li>Corridors in buildings with other occupiable uses</li> </ul>