

“IOR Certification Code/Plans Questions” Part 1 Architectural



Architectural



Code

- Class A 10 Questions
- Class B 12 Questions



Sample Architecture Question

In Hospitals, which one of the following is not required to be included within a dressing room for a nuclear medicine space?

- a) nurse call station
- b) seat or bench
- c) mirror
- d) provisions for hanging clothes

• **How to look for the response?**



• Sample #2- The question indicates nuclear medicine space

INDEX

HOSPITALS – SUPPORT SERVICES	
Administrative space	1224.21
Central sterile supply	1224.22
Employee dressing rooms and lockers	1224.25
Housekeeping rooms	1224.26
Laundry	1224.27
Morgue and autopsy facilities	1224.24
Storage	1224.23
HOSPITALS – SUPPLEMENTAL SERVICES	
Emergency service	1224.33
Intensive care units	1224.29
Intermediate-care service space	1224.38
Nuclear medicine	1224.34
Obstetrical facilities (perinatal unit space)	1224.32
Outpatient service space	1224.39
Pediatric and adolescent unit	1224.30
Psychiatric nursing unit	1224.31
Rehabilitation therapy department	1224.35
Renal dialysis service space (acute and chronic)	1224.36
Respiratory therapy service space	1224.37
Skilled nursing service space	1224.40
Social service space	1224.41
Supplemental surgery services	1224.28
HOTEL (or MOTEL) (definition) 202	
HURRICANE-PRONE REGIONS (see WIND LOADS) 202	
HURRICANE SHELTER (see STORM SHELTER)	
HURRICANE SHUTTERS	1609.2
HYDROGEN FUEL GAS ROOMS	421, Table 509
HYPERBARIC FACILITIES	425

AT THE CHAPTER 1224

INTERIOR ENVIRONMENT

1224.33.4.5 On-call room(s). Provisions shall be made to accommodate on-call sleeping room(s) for physicians and/or medical staff within the Emergency Department.

1224.33.4.6 Police and press room. Provisions shall be made to accommodate police briefing/debriefing and press releases. This may be located outside the Emergency Department.

1224.33.5 Other space considerations.

1224.33.5.1 Observation units. Observation rooms for the monitoring of patients up to 24 hours may be provided as a distinct unit within the emergency department. If provided the unit shall have the following:

1. Handwashing stations shall be provided in each patient room and for each four treatment stations, and for each major fraction thereof. These shall be uniformly distributed to provide equal access from each patient station. Handwashing stations shall be directly accessible to nurse stations and patient care areas.
2. Each patient station shall have a minimum of 120 square feet (11.15 m²) of clear floor area including space at each bedside for visitors and provision for visual privacy from casual observation by other patients and visitors.
3. One toilet room shall be provided for each six treatment stations and for each major fraction thereof.
4. An administrative center/nurse station, in compliance with Section 1224.4.4.2, positioned to allow staff to observe each patient care station or room.
5. A nourishment area in compliance with Section 1224.4.4.5.

1224.34 NUCLEAR MEDICINE

1224.34.1 General. If nuclear medicine is provided, the following shall be provided:

1224.34.1.1 Radiation protection. A certified physicist shall specify the type, location and amount of radiation protection to be installed in accordance with final approved department layout and equipment selection. Radiation protection requirements shall be incorporated into the construction documents and comply with Chapter 31C and the requirements of California Radiation Control Regulations, California Code of Regulations, Title 17, Division 1, Chapter 5, and Subchapter 4.

1224.34.1.2 Nuclear medicine room. Shall be sized to accommodate the equipment and a gurney.

When provided, the following facilities shall meet the requirements below:

1224.34.1.2.1 Scintigraphy (Gamma Camera) Facilities. Shall include the following:

1. Scanner room. The scanner room shall provide a minimum clearance of 4 feet (1218 mm) at each side and the foot of the table.
2. Handwashing stations shall be provided throughout the gamma camera suite at locations of patient contact and at locations where radiopharmaceutical materials are handled, prepared, or disposed of.

1224.34.1.2.2 Positron Emission Tomography (PET). Shall include the following:

1. Scanner room shall provide a minimum clearance of 4 feet (1218 mm) at each side and the foot of the table. Additional space shall be provided when PET is combined with CT, and include compliance with Section 1224.18.3 and shielding requirements in Section 1224.34.1.1.
2. Cyclotron room. Where radiopharmaceuticals are prepared on-site, a cyclotron shall be provided. Cyclotron facilities shall be located in access-restricted areas. Shielding requirements for cyclotron facilities shall comply with Section 1224.34.1.1.
3. Control room. A control room shall be provided with a full direct view of the patient in the PET scanner.
4. Patient uptake/cool-down room. A shielded room with access to a dedicated patient toilet, to accommodate radioactive waste, and lavatory shall be provided.
5. Handwashing stations shall be provided throughout the PET suite at locations of patient contact and at locations where radiopharmaceutical materials are handled, prepared, or disposed of.
6. Pre-procedure patient care and recovery area shall be provided to accommodate at least two stretchers. This area shall comply with Section 1224.34.2.6.
7. Computer equipment room shall be provided in support of the equipment provided.
8. Contaminated (hot) soiled holding shall be provided and operationally integrated to minimize incidental exposure to ionizing radiation.

1224.34.1.2.3 Single-Photon Emission Computed Tomography (SPECT) Facilities. When provided shall include the following:

1. Scanner room. Scanner room shall provide a minimum clearance of 4 feet (1218 mm) at each side and the foot of the table.

INTERIOR ENVIRONMENT

2. Control room. A control room shall be provided with a full direct view of the patient in the SPECT scanner.
3. Computer equipment room shall be provided in support of the equipment provided.
4. Handwashing stations shall be provided throughout the SPECT suite at locations of patient contact and at locations where radiopharmaceutical materials are handled, prepared, or disposed.

1224.34.1.3 Radiopharmacy. If radiopharmaceutical preparation is performed, an area adequate to house a radiopharmacy shall be provided with appropriate shielding. This area shall include adequate space for storage of radionuclides, chemicals for preparation, dose calibrators, and record keeping. If preprepared materials are used, storage and calculation area may be considerably smaller than that for on-site preparation. Space shall provide adequately for dose calibration, quality assurance, and record keeping. The area may still require shielding from other portions of the facilities.

1224.34.2 Support areas for nuclear medicine services. Nuclear medicine area when operated separately from the imaging department shall provide the following:

1224.34.2.1 Entrance. Space shall be adequate to permit entry of gurneys, beds, and able to accommodate imaging equipment, electronic consoles, and if present, computer terminals.

1224.34.2.2 Cleanup. Provisions for cleanup shall be located within the service space and be readily accessible. They shall include a service sink or floor receptacle as well as storage space for equipment and supplies.

1224.34.2.3 Consultation. A consultation area may be provided.

1224.34.2.4 Waiting. Waiting areas shall be provided out of traffic, under staff control. If the department is routinely used for outpatients and inpatients at the same time, separate waiting areas shall be provided with screening or visual privacy between the waiting areas.

1224.34.2.5 Dose administration area. Provide a dose administration area that is immediately accessible to the preparation area. Since as much as several hours may elapse for the dose to take effect, the area shall provide for visual privacy from other areas.

1224.34.2.6 Pre-procedure/holding area. A pre-procedure/holding area for patients on gurneys or beds shall be provided out of traffic and under control of staff and may be combined with the dose administration area with visual privacy between the areas.

1224.34.2.7 Patient dressing rooms. Patient dressing rooms shall be immediately accessible to the waiting area and procedure rooms. Each dressing room shall include a seat or bench, a mirror, and provisions for hanging patients' clothing and for securing valuables.

In Hospitals, which one of the following is not required to be included within a dressing room for a nuclear medicine space?

1224.34.2.7 Patient dressing rooms. Patient dressing rooms shall be immediately accessible to the waiting area and procedure rooms. Each dressing room shall include a seat or bench, a mirror, and provisions for hanging patients' clothing and for securing valuables.



Response:

- a) nurse call station
- b) seat or bench
- c) mirror
- d) provisions for hanging clothes



Plan

- Class A 13 Questions
- Class B 7 Questions



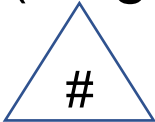
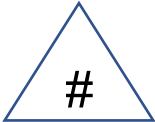
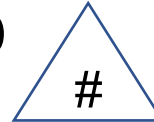
Architectural Plan Questions

- Let's analyze the questions with the correct responses...
- How to read/interpret the question
- How to arrive to a response (sometimes it is easy, sometimes it is not easy)
- Remember: Plans are not perfect. And this is why Request For Information (RFI) exist during construction



Table of contents

- Drawing Content (Original set, RFI, ASI, ACD)

- delta symbol RFI  ASI  ACD 
RFI# ASI# ACD#

- Depending on the size and complexity of the project
- the information provided on the fire and life safety drawings **should provide a clear description of how the project complies with the various provisions of the CBC.** Some of the general information for the project may also appear on the drawing title sheet.
- Also, much of the specific information will be contained in the body of drawing details and schedules.



Table of contents

DESIGNATOR	NAME
	Cover Sheet
G	General
H	Hazardous Materials
V	Survey / Mapping
B	Geotechnical
C	Civil
L	Landscape
S	Structural
A	Architectural
I	Interiors
Q	Equipment
F	Fire Protection
P	Plumbing

D	Process
M	Mechanical
E	Electrical
W	Distributed Energy
T	Telecommunications
R	Resource
X	Other Disciplines
Z	Contractor / Shop Drawings
O	Operations



Sheet Types

DESIGNATOR	NAME
0	General: Symbol legend, abbreviations, general notes
1	Plans
2	Elevations
3	Sections
4	Large Scale Drawings: plans, elevations, sections (NOT details)
5	Details
6	Schedules and Diagrams
7	User Defined
8	User Defined
9	3D drawings: isometric, perspective, photos



MASTER DRAWING INDEX:

C-0 COVER SHEET
G1.01 GENERAL NOTES/CODE ANALYSIS/LEGENDS
G1.02 U.L. ASSEMBLIES
G1.03 U.L. ASSEMBLIES

C-0 COVER SHEET
G1.01 GENERAL NOTES/CODE ANALYSIS/LEGENDS
G1.02 U.L. ASSEMBLIES
G1.03 U.L. ASSEMBLIES

ARCHITECTURAL PLANS

A0.01 ARCHITECTURAL SITE PLAN
A0.51 SITE DETAILS
L1.01 LIFE SAFETY PLAN - 1ST FLOOR, OVERALL
L1.01A LIFE SAFETY PLAN - 1ST FLOOR, PART A
L1.01B LIFE SAFETY PLAN - 1ST FLOOR, PART B
L1.02 LIFE SAFETY PLAN - 2ND FLOOR, OVERALL
L1.02A LIFE SAFETY PLAN - 2ND FLOOR, PART A
L1.02B LIFE SAFETY PLAN - 2ND FLOOR, PART B
A1.00A OVERALL FLOOR PLAN - 1ST FLOOR
A1.00B OVERALL FLOOR PLAN - 2ND FLOOR
A1.01A DIMENSION PLAN - 1ST FLOOR, PART A
A1.01B DIMENSION PLAN - 1ST FLOOR, PART B
A1.02A DIMENSION PLAN - 2ND FLOOR, PART A
A1.02B DIMENSION PLAN - 2ND FLOOR, PART B
A1.51A NOTED PLAN - 1ST FLOOR, PART A
A1.51B NOTED PLAN - 1ST FLOOR, PART B
A1.52A NOTED PLAN - 2ND FLOOR, PART A
A1.52B NOTED PLAN - 2ND FLOOR, PART B
A1.81A EQUIPMENT PLAN - 1ST FLOOR, PART A
A1.81B EQUIPMENT PLAN - 1ST FLOOR, PART B
A1.82A EQUIPMENT PLAN - 2ND FLOOR, PART A
A1.82B EQUIPMENT PLAN - 2ND FLOOR, PART B
A2.01 ENLARGED PLANS & ELEVATIONS
A2.02 ENLARGED PLANS & ELEVATIONS
A2.21 ENLARGED PLANS: TOILETS
A2.22 ENLARGED PLANS & ELEVATIONS
A2.61 VERTICAL TRANSPORT: STAIRWELLS
A2.71 VERTICAL TRANSPORT: ELEVATORS
A3.01A CEILING PLAN - 1ST FLOOR, PART A
A3.01B CEILING PLAN - 1ST FLOOR, PART B
A3.02A CEILING PLAN - 2ND FLOOR, PART A
A3.02B CEILING PLAN - 2ND FLOOR, PART B
A3.51 CEILING DETAILS
A4.01 ROOF PLAN
A4.51 ROOF DETAILS
A5.01 EXTERIOR ELEVATIONS
A5.02 EXTERIOR ELEVATIONS - ENLARGED
A5.03 EXTERIOR ELEVATIONS - ENLARGED
A6.00 BUILDING SECTION
A6.20 INTERIOR WALL TYPES/DETAILS
A6.21 WALL SECTIONS
A6.22 WALL SECTIONS
A6.23 WALL SECTIONS
A6.24 WALL SECTIONS
A6.25 WALL SECTIONS
A6.26 WALL SECTIONS
A6.51 GENERAL DETAILS
A6.52 GENERAL DETAILS
A6.53 GENERAL DETAILS
A6.54 GENERAL DETAILS
A6.55 GENERAL DETAILS
A6.56 GENERAL DETAILS
A7.01 DOOR SCHEDULE
A7.02 WINDOW ELEVATIONS
A7.51 DOOR DETAILS
A7.52 WINDOW DETAILS
A8.01 CASEWORK ELEVATIONS
A8.02 CASEWORK ELEVATIONS
A8.03 CASEWORK ELEVATIONS
A8.51 CASEWORK DETAILS
A8.52 CASEWORK DETAILS
A8.53 CASEWORK DETAILS
F1.01A FURNISHING PLAN - 1ST FLOOR, PART A
F1.01B FURNISHING PLAN - 1ST FLOOR, PART B
F1.02A FURNISHING PLAN - 2ND FLOOR, PART A
F1.02B FURNISHING PLAN - 2ND FLOOR, PART B
F2.01A PATTERN PLAN - 1ST FLOOR, PART A
F2.01B PATTERN PLAN - 1ST FLOOR, PART B
F2.02A PATTERN PLAN - 2ND FLOOR, PART A
F2.02B PATTERN PLAN - 2ND FLOOR, PART B

KITCHEN PLANS

FS1.1 KITCHEN EQUIPMENT
FS1.2 KITCHEN PLUMBING
FS1.3 KITCHEN ELECTRICAL
FS1.4 KITCHEN VENTILATION

STRUCTURAL PLANS

S1.0 GENERAL NOTES
S1.1 FOUNDATION PLAN: PART A
S1.2 FOUNDATION PLAN: PART B
S2.1 FOUNDATION SECTIONS & DETAILS
S2.2 FOUNDATION SECTIONS & DETAILS
S2.3 FOUNDATION SECTIONS & DETAILS
S3.1 SECOND FLOOR FRAMING PLAN: PART A
S3.2 SECOND FLOOR FRAMING PLAN: PART B
S3.3 ROOF FRAMING PLAN: PART A
S3.4 ROOF FRAMING PLAN: PART B
S4.1 FRAMING SECTIONS & DETAILS
S4.2 FRAMING SECTIONS & DETAILS
S4.3 FRAMING SECTIONS & DETAILS
S4.4 EXTERIOR STUD WALL ELEVATIONS & DETAILS
S5.1 CRACK/COLUMN SCHEDULE & DETAILS
S5.2 FRAME ELEVATIONS
S5.3 FRAME ELEVATIONS
S5.8 BEAM/COLUMN CONNECTIONS

MECHANICAL PLANS

M0.01 HVAC SCHEDULES
M0.02 HVAC SCHEDULES
M0.03 HVAC SCHEDULES
M0.04 HVAC VENTILATION TABLE
M0.05 HVAC VENTILATION TABLE
M0.06 HVAC VENTILATION TABLE
M0.07 HVAC VENTILATION TABLE
M2.01 HVAC NEW CONSTRUCTION-1st FLOOR: PART A
M2.02 HVAC PIPING-1st FLOOR: PART A
M2.03 HVAC NEW CONSTRUCTION-1st FLOOR: PART B
M2.04 HVAC PIPING-1st FLOOR: PART B
M2.05 ROOF PLAN: PART A
M2.06 ROOF PLAN: PART B
M2.07 LARGE SCALE MECHANICAL ROOM
M2.08 LARGE SCALE SECTIONS
M3.01 HVAC CONTROLS
M3.02 HVAC CONTROLS
M4.01 HVAC DETAILS
M4.02 HVAC DETAILS
M5.01 HVAC DETAILS
M5.02 HVAC DETAILS
M6.01 HVAC NEW CONSTRUCTION-2nd FLOOR: PART A
M6.02 HVAC PIPING-2nd FLOOR: PART A
M6.03 HVAC NEW CONSTRUCTION-2nd FLOOR: PART B
M6.04 HVAC PIPING-2nd FLOOR: PART B

PLUMBING PLANS

P0.01 PLUMBING SCHEDULES
P0.02 SITE PLAN: PLUMBING
P1.01 UNDERGROUND PLUMBING-1st FLOOR: PART A
P1.02 UNDERGROUND PLUMBING-1st FLOOR: PART B
P1.01 PLUMBING-1st FLOOR: PART A
P1.02 PLUMBING-1st FLOOR: PART B
P1.03 PLUMBING-2nd FLOOR: PART A
P1.04 PLUMBING-2nd FLOOR: PART B
P1.05 PLUMBING-ROOF: PART A
P1.06 PLUMBING-ROOF: PART B
P2.01 MEDICAL GAS-1st FLOOR: PART A
P2.02 MEDICAL GAS-1st FLOOR: PART B
P2.03 MEDICAL GAS-2nd FLOOR: PART A
P2.04 MEDICAL GAS-2nd FLOOR: PART B
P3.01 LARGE SCALE PLUMBING: MECHANICAL ROOM
P3.02 LARGE SCALE PLUMBING: KITCHEN
P4.01 PLUMBING RISERS
P5.01 PLUMBING DETAILS
P5.02 PLUMBING DETAILS

ELECTRICAL PLANS

E0.01 ELECTRICAL INDEX & SCHEDULES
E0.02 ELECTRICAL LEGENDS
E0.03 ELECTRICAL EQUIPMENT CONNECTION SCHEDULES
E0.04 ELECTRICAL EQUIPMENT SCHEDULES
E1.01 ELECTRICAL-SITE PLAN
E2.01 LIGHTING-1st FLOOR: PART A
E2.02 LIGHTING-1st FLOOR: PART B
E2.03 LIGHTING-2nd FLOOR: PART A
E2.04 LIGHTING-2nd FLOOR: PART B
E3.01 POWER-1st FLOOR: PART A
E3.02 POWER-1st FLOOR: PART B
E3.03 POWER-2nd FLOOR: PART A
E3.04 POWER-2nd FLOOR: PART B
E4.01 SYSTEMS-1st FLOOR: PART A
E4.02 SYSTEMS-1st FLOOR: PART B
E4.03 SYSTEMS-2nd FLOOR: PART A
E4.04 SYSTEMS-2nd FLOOR: PART B
E5.01 ELECTRICAL-ROOF: PART A
E5.02 ELECTRICAL-ROOF: PART B
E6.01 LARGE SCALE ELECTRICAL
E6.02 LARGE SCALE ELECTRICAL
E7.01 ELECTRICAL POWER DISTRIBUTION: RISER
E7.02 ELECTRICAL POWER DISTRIBUTION: NORMAL ONE LINE DIAGRAM
E7.03 ELECTRICAL POWER DISTRIBUTION: ESSENTIAL ONE LINE DIAGRAM
E7.04 ELECTRICAL POWER DISTRIBUTION: ESSENTIAL ONE LINE DIAGRAM
E8.01 TELECOMMUNICATION DETAILS
E9.01 ELECTRICAL DETAILS
E9.02 ELECTRICAL PANELBOARD SCHEDULES: NORMAL SYSTEM
E9.03 ELECTRICAL PANELBOARD SCHEDULES: ESSENTIAL SYSTEM

FIRE SPRINKLER PLAN

FP-1 COVER SHEET
FP-2 FIRST FLOOR PART A PIPING PLAN
FP-3 FIRST FLOOR PART B PIPING PLAN
FP-4 FIRST FLOOR PART A RCP
FP-5 FIRST FLOOR PART B RCP
FP-6 SECOND FLOOR FIRE SPRINKLER PIPING PLAN
FP-7 SECOND FLOOR RCP

SEISMIC RESTRAINT

SR-01 SEISMIC RESTRAINT ARCHITECTURAL DETAIL
SR A2 SEISMIC RESTRAINT ARCHITECTURAL DETAIL
SR A3 SEISMIC RESTRAINT ARCHITECTURAL DETAIL
SR A4 SEISMIC RESTRAINT ARCHITECTURAL DETAIL
SR A5 SEISMIC RESTRAINT ARCHITECTURAL DETAIL
SR A6 SEISMIC RESTRAINT ARCHITECTURAL DETAIL
SR A7 SEISMIC RESTRAINT ARCHITECTURAL DETAIL
SR A8 SEISMIC RESTRAINT ARCHITECTURAL DETAIL
SR A9 SEISMIC RESTRAINT ARCHITECTURAL DETAIL
SR A10 SEISMIC RESTRAINT ARCHITECTURAL DETAIL
SR A11 SEISMIC RESTRAINT ARCHITECTURAL DETAIL
SR A12 SEISMIC RESTRAINT ARCHITECTURAL DETAIL
SR G1 SEISMIC RESTRAINT GENERAL DETAIL
SR M1 SEISMIC RESTRAINT MECHANICAL DETAIL
SR M2 SEISMIC RESTRAINT MECHANICAL DETAIL
SR M3 SEISMIC RESTRAINT MECHANICAL DETAIL
SR M4 SEISMIC RESTRAINT MECHANICAL DETAIL
SR M5 SEISMIC RESTRAINT MECHANICAL DETAIL
SR E1 SEISMIC RESTRAINT ELECTRICAL DETAIL
SR E2 SEISMIC RESTRAINT ELECTRICAL DETAIL
SR E3 SEISMIC RESTRAINT ELECTRICAL DETAIL
SR P1 SEISMIC RESTRAINT PLUMBING DETAIL

MASTER DRAWING INDEX:

ARCHITECTURAL PLANS

AD.01	ARCHITECTURAL SITE PLAN
AD.51	SITE DETAILS
LS1.01	LIFE SAFETY PLAN - 1ST FLOOR, OVERALL
LS1.01A	LIFE SAFETY PLAN - 1ST FLOOR, PART A
LS1.01B	LIFE SAFETY PLAN - 1ST FLOOR, PART B
LS1.02	LIFE SAFETY PLAN - 2ND FLOOR, OVERALL
LS1.02A	LIFE SAFETY PLAN - 2ND FLOOR, PART A
LS1.02B	LIFE SAFETY PLAN - 2ND FLOOR, PART B
A1.00A	OVERALL FLOOR PLAN - 1ST FLOOR
A1.00B	OVERALL FLOOR PLAN - 2ND FLOOR
A1.01A	DIMENSION PLAN - 1ST FLOOR, PART A
A1.01B	DIMENSION PLAN - 1ST FLOOR, PART B
A1.02A	DIMENSION PLAN - 2ND FLOOR, PART A
A1.02B	DIMENSION PLAN - 2ND FLOOR, PART B
A1.51A	NOTED PLAN - 1ST FLOOR, PART A
A1.51B	NOTED PLAN - 1ST FLOOR, PART B
A1.52A	NOTED PLAN - 2ND FLOOR, PART A
A1.52B	NOTED PLAN - 2ND FLOOR, PART B
A1.81A	EQUIPMENT PLAN - 1ST FLOOR, PART A
A1.81B	EQUIPMENT PLAN - 1ST FLOOR, PART B
A1.82A	EQUIPMENT PLAN - 2ND FLOOR, PART A
A1.82B	EQUIPMENT PLAN - 2ND FLOOR, PART B
A2.01	ENLARGED PLANS & ELEVATIONS
A2.02	ENLARGED PLANS & ELEVATIONS
A2.21	ENLARGED PLANS: TOILETS
A2.22	ENLARGED PLANS & ELEVATIONS
A2.61	VERTICAL TRANSPORT: STAIRWELLS
A2.71	VERTICAL TRANSPORT: ELEVATORS
A3.01A	CEILING PLAN - 1ST FLOOR, PART A
A3.01B	CEILING PLAN - 1ST FLOOR, PART B
A3.02A	CEILING PLAN - 2ND FLOOR, PART A
A3.02B	CEILING PLAN - 2ND FLOOR, PART B
A3.51	CEILING DETAILS
A4.01	ROOF PLAN
A4.51	ROOF DETAILS
A5.01	EXTERIOR ELEVATIONS
A5.02	EXTERIOR ELEVATIONS - ENLARGED
A5.03	EXTERIOR ELEVATIONS - ENLARGED
A6.00	BUILDING SECTION
A8.20	INTERIOR WALL TYPES/DETAILS
A8.21	WALL SECTIONS
A8.22	WALL SECTIONS
A8.23	WALL SECTIONS
A8.24	WALL SECTIONS
A8.25	WALL SECTIONS
A8.26	WALL SECTIONS
A8.27	WALL SECTIONS
A8.51	GENERAL DETAILS
A8.52	GENERAL DETAILS
A8.53	GENERAL DETAILS
A8.54	GENERAL DETAILS
A8.55	GENERAL DETAILS
A8.56	GENERAL DETAILS
A7.01	DOOR SCHEDULE
A7.02	WINDOW ELEVATIONS
A7.51	DOOR DETAILS
A7.52	WINDOW DETAILS
A8.01	CASEWORK ELEVATIONS
A8.02	CASEWORK ELEVATIONS
A8.03	CASEWORK ELEVATIONS
A8.51	CASEWORK DETAILS
A8.52	CASEWORK DETAILS
A8.53	CASEWORK DETAILS
F1.01A	FURNISHING PLAN - 1ST FLOOR, PART A
F1.01B	FURNISHING PLAN - 1ST FLOOR, PART B
F1.02A	FURNISHING PLAN - 2ND FLOOR, PART A
F1.02B	FURNISHING PLAN - 2ND FLOOR, PART B
F2.01A	PATTERN PLAN - 1ST FLOOR, PART A
F2.01B	PATTERN PLAN - 1ST FLOOR, PART B
F2.02A	PATTERN PLAN - 2ND FLOOR, PART A
F2.02B	PATTERN PLAN - 2ND FLOOR, PART B

C-0 COVER SHEET

01.01	GENERAL NOTES/ANALYSIS/LEGENDS
01.02	UL ASSEMBLES
01.03	UL ASSEMBLES

KITCHEN PLANS

FS1.1	KITCHEN EQUIPMENT
FS1.2	KITCHEN PLUMBING
FS1.3	KITCHEN ELECTRICAL
FS1.4	KITCHEN VENTILATION

ELECTRICAL PLANS

ED.01	ELECTRICAL INDEX & SCHEDULES
ED.02	ELECTRICAL LEGENDS
ED.03	ELECTRICAL EQUIPMENT CONNECTION SCHEDULES
ED.04	ELECTRICAL EQUIPMENT SCHEDULES
ED.05	ELECTRICAL-SITE PLAN
ED.01	LIGHTING-1st FLOOR: PART A
ED.02	LIGHTING-1st FLOOR: PART B
ED.03	LIGHTING-2nd FLOOR: PART A
ED.04	LIGHTING-2nd FLOOR: PART B
ED.01	POWER-1st FLOOR: PART A
ED.02	POWER-1st FLOOR: PART B
ED.03	POWER-2nd FLOOR: PART A
ED.04	POWER-2nd FLOOR: PART B
ED.01	SYSTEMS-1st FLOOR: PART A
ED.02	SYSTEMS-1st FLOOR: PART B
ED.03	SYSTEMS-2nd FLOOR: PART A
ED.04	SYSTEMS-2nd FLOOR: PART B
ED.01	ELECTRICAL-ROOF: PART A
ED.02	ELECTRICAL-ROOF: PART B
ED.01	LARGE SCALE ELECTRICAL
ED.02	LARGE SCALE ELECTRICAL
ED.01	ELECTRICAL POWER DISTRIBUTION: RISER
ED.02	ELECTRICAL POWER DISTRIBUTION: NORMAL ONE LINE DIAGRAM
ED.03	ELECTRICAL POWER DISTRIBUTION: ESSENTIAL ONE LINE DIAGRAM
ED.04	TELECOMMUNICATION DETAILS
ED.02	ELECTRICAL DETAILS
ED.01	ELECTRICAL PANELBOARD SCHEDULES: NORMAL SYSTEM
ED.02	ELECTRICAL PANELBOARD SCHEDULES: ESSENTIAL SYSTEM
ED.03	ELECTRICAL PANELBOARD SCHEDULES: ESSENTIAL SYSTEM

STRUCTURAL PLANS

SD.01	GENERAL NOTES
S1.1	FOUNDATION PLAN: PART A
S1.2	FOUNDATION PLAN: PART B
S2.1	FOUNDATION SECTIONS & DETAILS
S2.2	FOUNDATION SECTIONS & DETAILS
S2.3	FOUNDATION SECTIONS & DETAILS
S3.1	SECOND FLOOR FRAMING PLAN: PART A
S3.2	SECOND FLOOR FRAMING PLAN: PART B
S3.3	ROOF FRAMING PLAN: PART A
S3.4	ROOF FRAMING PLAN: PART B
S4.1	FRAMING SECTIONS & DETAILS
S4.2	FRAMING SECTIONS & DETAILS
S4.3	FRAMING SECTIONS & DETAILS
S4.4	EXTERIOR STUD WALL ELEVATIONS & DETAILS
S5.1	GRAVITY COLLUM: SCHEDULE & DETAILS
S5.2	FRAME ELEVATIONS
S5.3	FRAME ELEVATIONS
S5.8	BEAM/COLUMN CONNECTIONS

MECHANICAL PLANS

M0.01	HVAC SCHEDULES
M0.02	HVAC SCHEDULES
M0.03	HVAC SCHEDULES
M0.04	HVAC VENTILATION TABLE
M0.05	HVAC VENTILATION TABLE
M0.06	HVAC VENTILATION TABLE
M0.07	HVAC VENTILATION TABLE
M2.01	HVAC NEW CONSTRUCTION-1st FLOOR: PART A
M2.02	HVAC PIPING-1st FLOOR: PART A
M2.03	HVAC NEW CONSTRUCTION-1st FLOOR: PART B
M2.04	HVAC PIPING-1st FLOOR: PART B
M2.05	ROOF PLAN: PART A
M2.06	ROOF PLAN: PART B
M2.07	LARGE SCALE MECHANICAL ROOM
M2.08	LARGE SCALE SECTIONS
M3.01	HVAC CONTROLS
M3.02	HVAC CONTROLS
M4.01	HVAC DETAILS
M4.02	HVAC DETAILS
M5.01	HVAC DETAILS
M5.02	HVAC DETAILS
M6.01	HVAC NEW CONSTRUCTION-2nd FLOOR: PART A
M6.02	HVAC PIPING-2nd FLOOR: PART A
M6.03	HVAC NEW CONSTRUCTION-2nd FLOOR: PART B
M6.04	HVAC PIPING-2nd FLOOR: PART B

PLUMBING PLANS

P0.01	PLUMBING SCHEDULES
P0.02	SITE PLAN: PLUMBING
P1.01	UNDERGROUND PLUMBING-1st FLOOR: PART A
P1.02	UNDERGROUND PLUMBING-1st FLOOR: PART B
P1.01	PLUMBING-1st FLOOR: PART A
P1.02	PLUMBING-1st FLOOR: PART B
P1.03	PLUMBING-2nd FLOOR: PART A
P1.04	PLUMBING-2nd FLOOR: PART B
P1.05	PLUMBING-ROOF: PART A
P1.06	PLUMBING-ROOF: PART B
P2.01	MEDICAL GAS-1st FLOOR: PART A
P2.02	MEDICAL GAS-1st FLOOR: PART B
P2.03	MEDICAL GAS-2nd FLOOR: PART A
P2.04	MEDICAL GAS-2nd FLOOR: PART B
P3.01	LARGE SCALE PLUMBING: MECHANICAL ROOM
P3.02	LARGE SCALE PLUMBING: KITCHEN
P4.01	PLUMBING RISERS
P5.01	PLUMBING DETAILS
P5.02	PLUMBING DETAILS

FS1.1	KITCHEN EQUIPMENT
FS1.2	KITCHEN PLUMBING
FS1.3	KITCHEN ELECTRICAL
FS1.4	KITCHEN VENTILATION

What to remember

- Notes
- Key Words
- Typical Details
- General Notes
- Look into all the disciplines



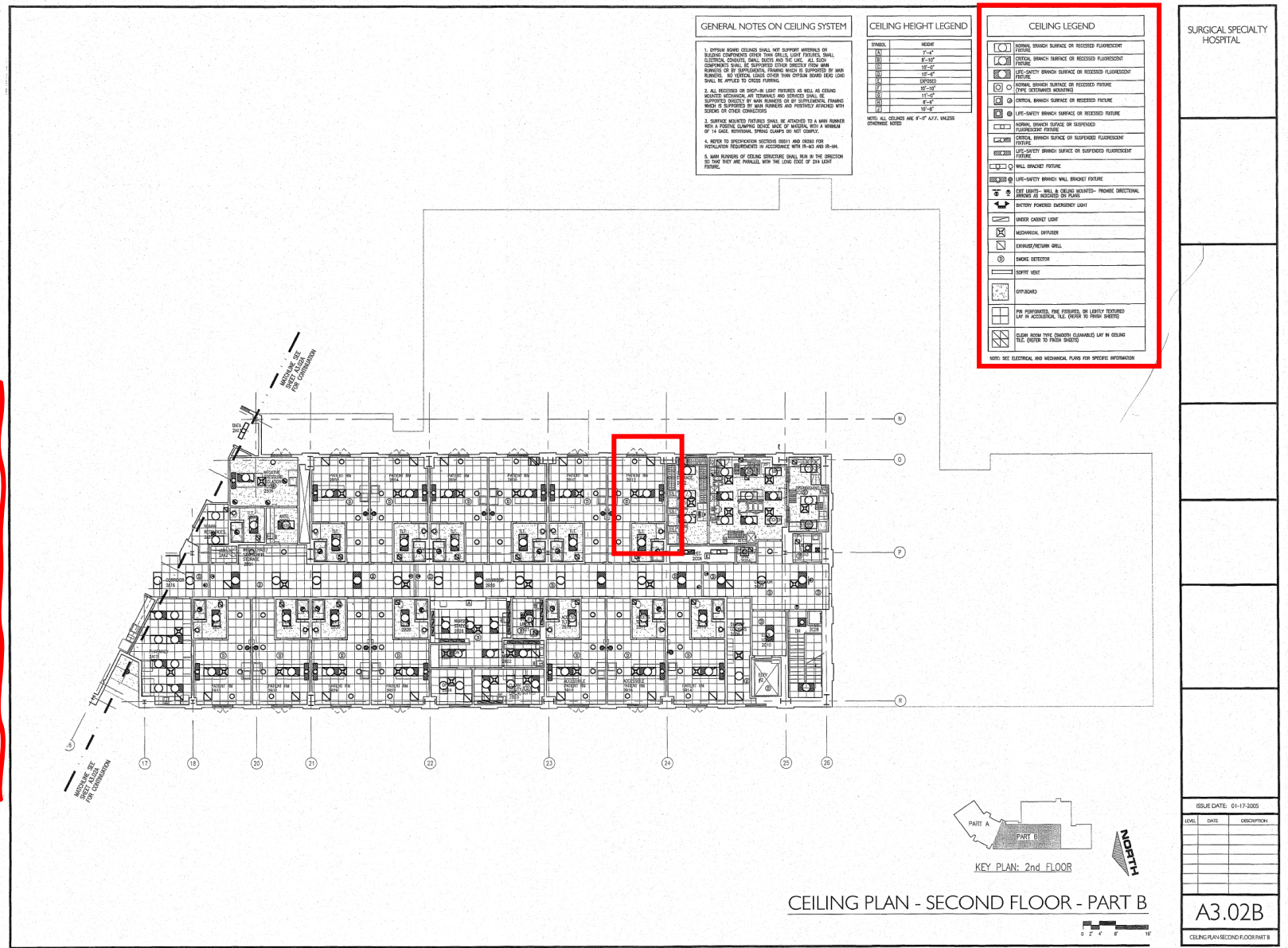
Example #1



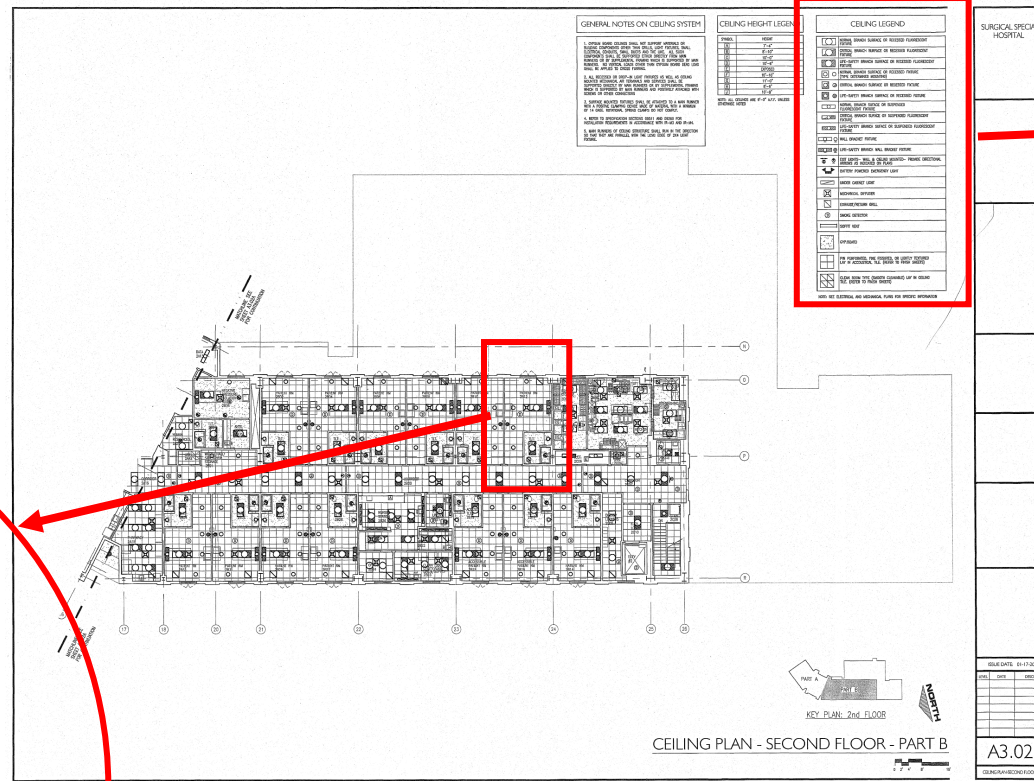
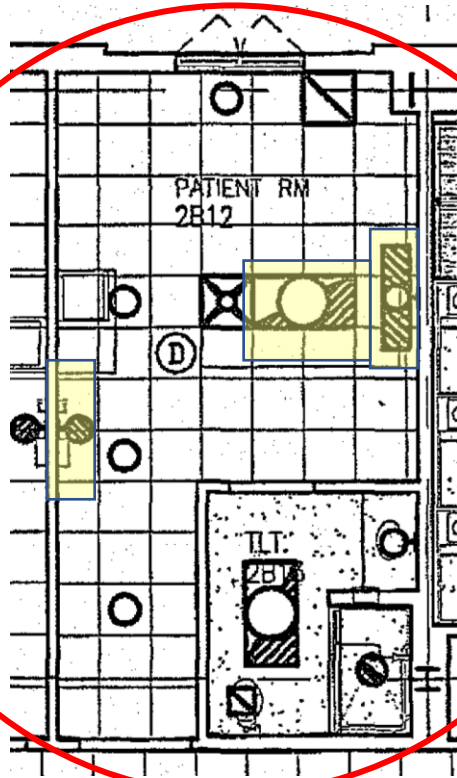
What is the total number of luminaries connected to the emergency electrical system located within patient room 2B12?

What do you need to look for: 2B12 and find it in the electrical sheet because you need to look also for the legend Identify the emergency/critical light fixture.

Note: **2B12** location is on the 2nd floor.



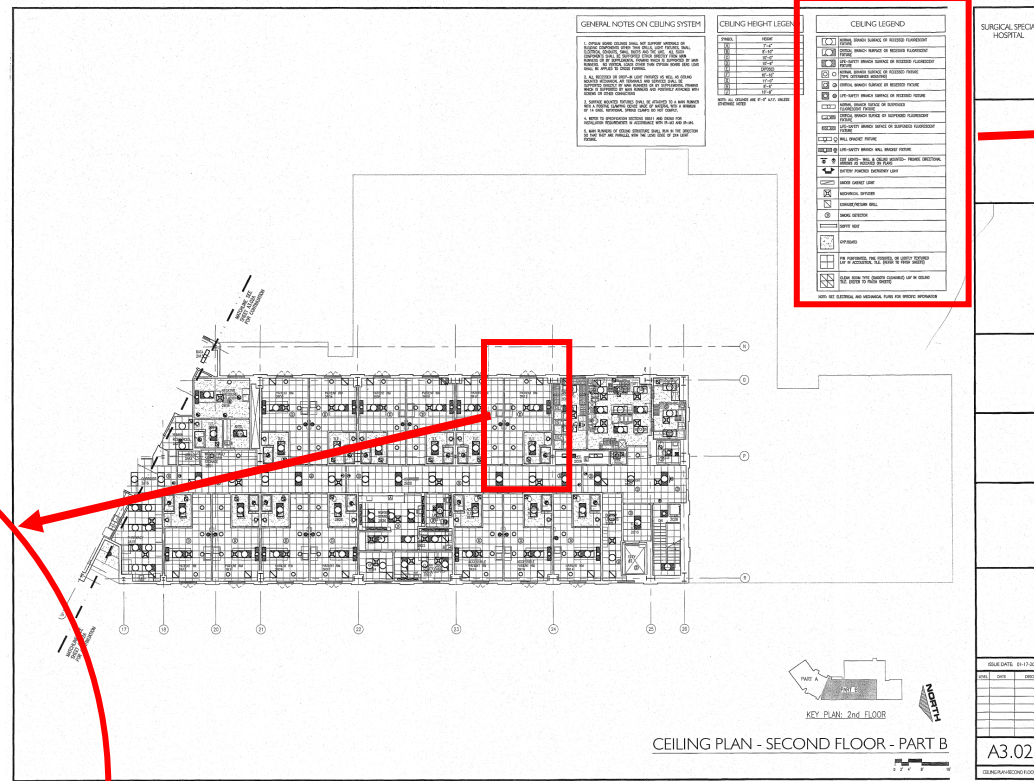
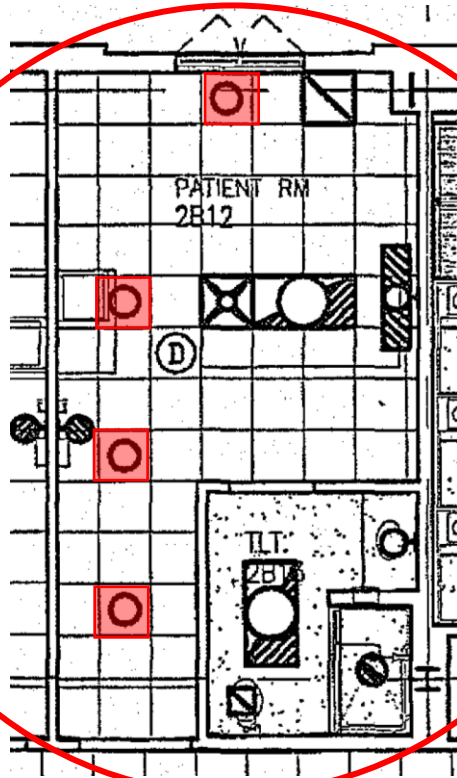
What is the total number of luminaries connected to the emergency electrical system located within patient room 2B12?



CEILING LEGEND	
	NORMAL BRANCH SURFACE OR RECESSED FLUORESCENT FIXTURE
	CRITICAL BRANCH SURFACE OR RECESSED FLUORESCENT FIXTURE
	LIFE-SAFETY BRANCH SURFACE OR RECESSED FLUORESCENT FIXTURE
	NORMAL BRANCH SURFACE OR RECESSED FIXTURE (TYPE DETERMINES MOUNTING)
	CRITICAL BRANCH SURFACE OR RECESSED FIXTURE
	LIFE-SAFETY BRANCH SURFACE OR RECESSED FIXTURE
	NORMAL BRANCH SURFACE OR SUSPENDED FLUORESCENT FIXTURE
	CRITICAL BRANCH SURFACE OR SUSPENDED FLUORESCENT FIXTURE
	LIFE-SAFETY BRANCH SURFACE OR SUSPENDED FLUORESCENT FIXTURE
	WALL BRACKET FIXTURE
	LIFE-SAFETY BRANCH WALL BRACKET FIXTURE

Ceiling Legend: Find the Critical Light Fixture Symbols
In 2B12 see which Light Fixture there are

What is the total number of luminaries connected to the emergency electrical system located within patient room 2B12?

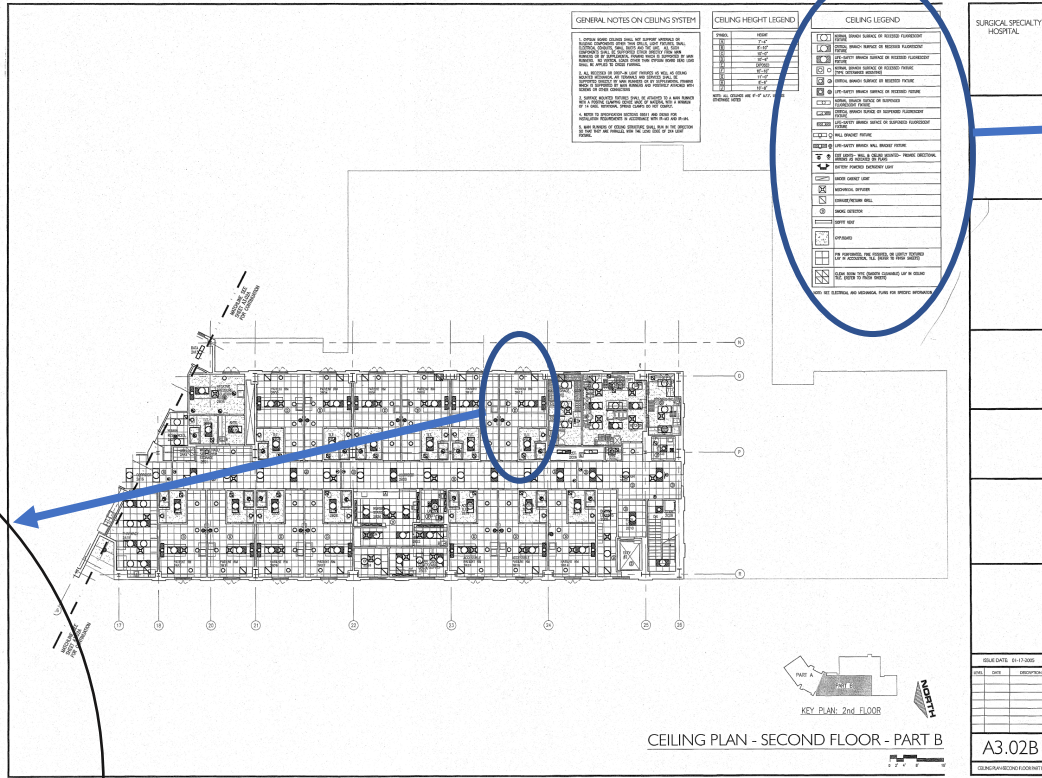
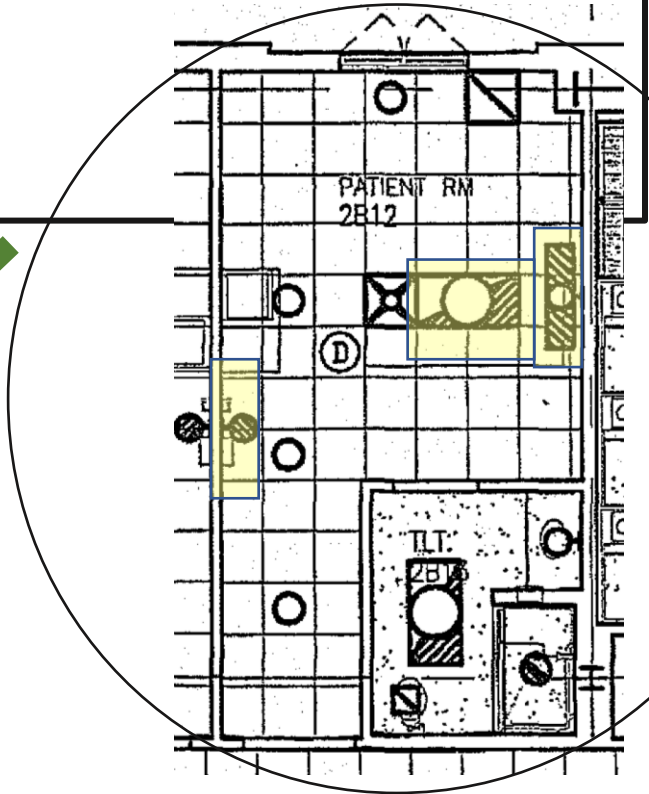


CEILING LEGEND	
	NORMAL BRANCH SURFACE OR RECESSED FLUORESCENT FIXTURE
	CRITICAL BRANCH SURFACE OR RECESSED FLUORESCENT FIXTURE
	LIFE-SAFETY BRANCH SURFACE OR RECESSED FLUORESCENT FIXTURE
	NORMAL BRANCH SURFACE OR RECESSED FIXTURE (TYPE DETERMINES MOUNTING)
	CRITICAL BRANCH SURFACE OR RECESSED FIXTURE
	LIFE-SAFETY BRANCH SURFACE OR RECESSED FIXTURE
	NORMAL BRANCH SURFACE OR SUSPENDED FLUORESCENT FIXTURE
	CRITICAL BRANCH SURFACE OR SUSPENDED FLUORESCENT FIXTURE
	LIFE-SAFETY BRANCH SURFACE OR SUSPENDED FLUORESCENT FIXTURE
	WALL BRACKET FIXTURE
	LIFE-SAFETY BRANCH WALL BRACKET FIXTURE

In the ceiling plan, there are also other light fixtures. Those are normal. Not part of the question

What is the total number of luminaries connected to the emergency electrical system located within patient room 2B12?

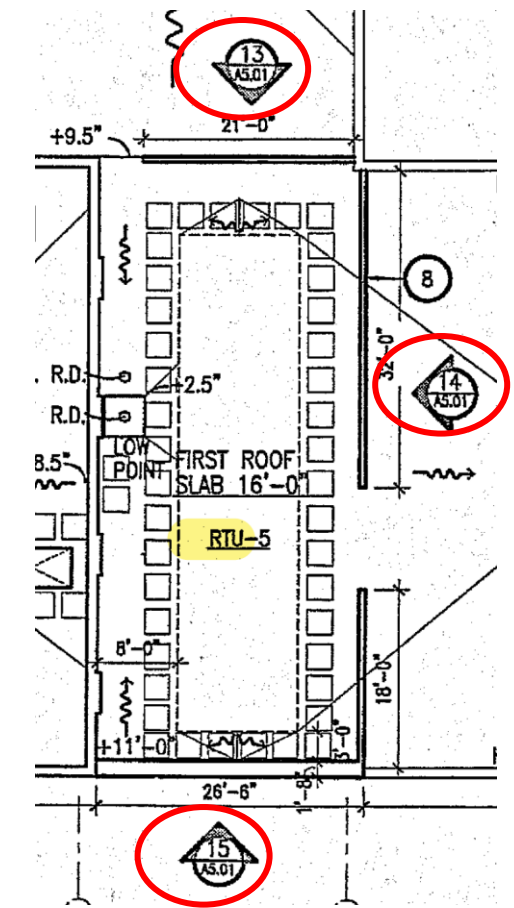
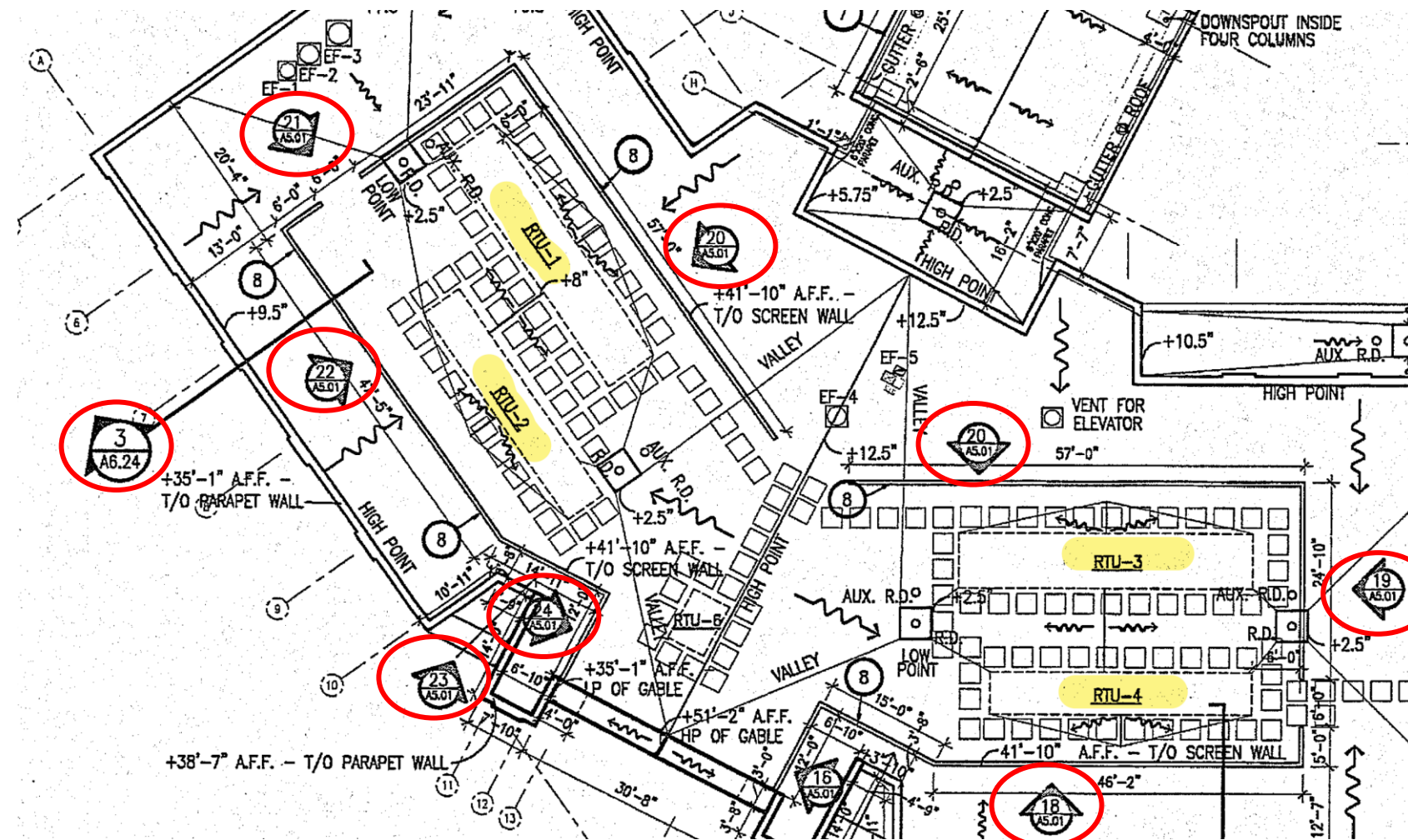
- A. 1
- B. 2
- C. 3
- D. 4



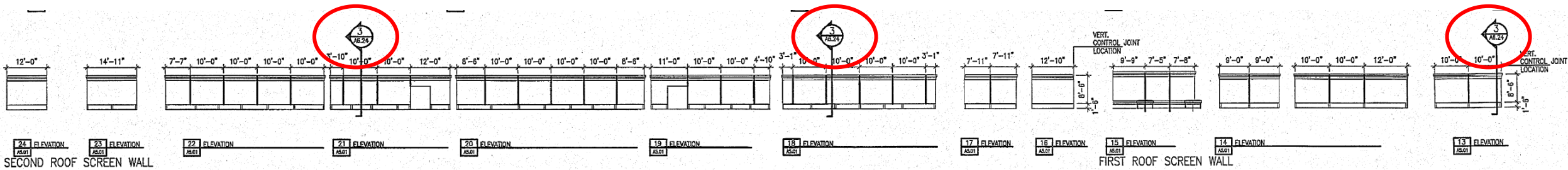
CEILING LEGEND	
	NORMAL BRANCH SURFACE OR RECESSED FLUORESCENT FIXTURE
	CRITICAL BRANCH SURFACE OR RECESSED FLUORESCENT FIXTURE
	LIFE-SAFETY BRANCH SURFACE OR RECESSED FLUORESCENT FIXTURE
	NORMAL BRANCH SURFACE OR RECESSED FIXTURE (TYPE DETERMINES MOUNTING)
	CRITICAL BRANCH SURFACE OR RECESSED FIXTURE
	LIFE-SAFETY BRANCH SURFACE OR RECESSED FIXTURE
	NORMAL BRANCH SURFACE OR SUSPENDED FLUORESCENT FIXTURE
	CRITICAL BRANCH SURFACE OR SUSPENDED FLUORESCENT FIXTURE
	LIFE-SAFETY BRANCH SURFACE OR SUSPENDED FLUORESCENT FIXTURE
	WALL BRACKET FIXTURE
	LIFE-SAFETY BRANCH WALL BRACKET FIXTURE

Example #2

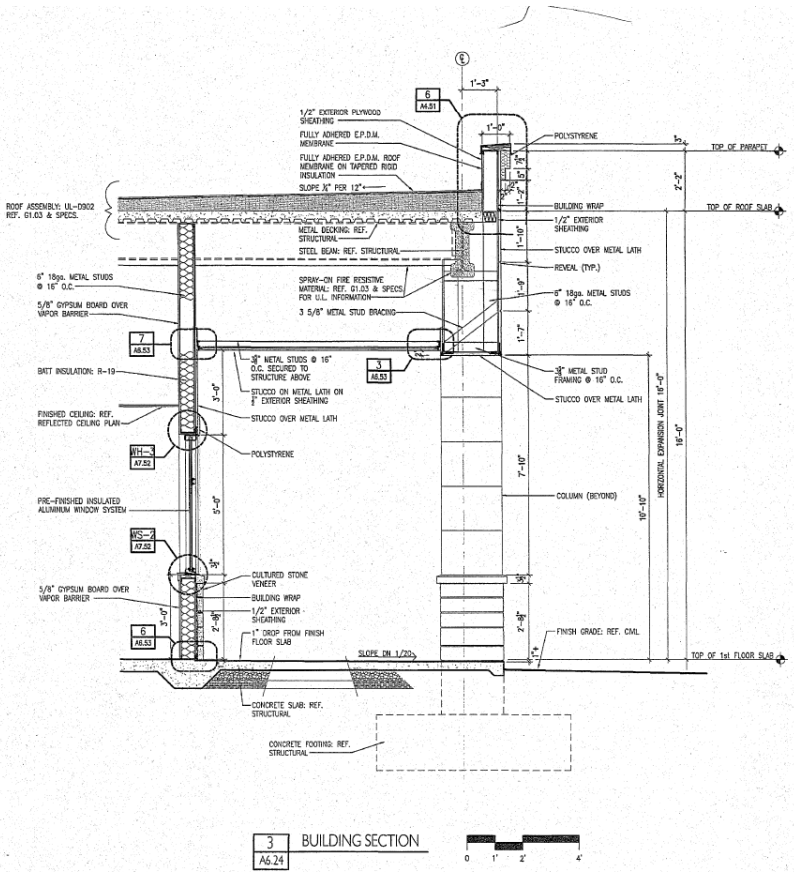




How can you find the detail?
 Maybe by looking on callout detail
 from exterior elevations or sections?



Is 3/A6.24 the right detail?

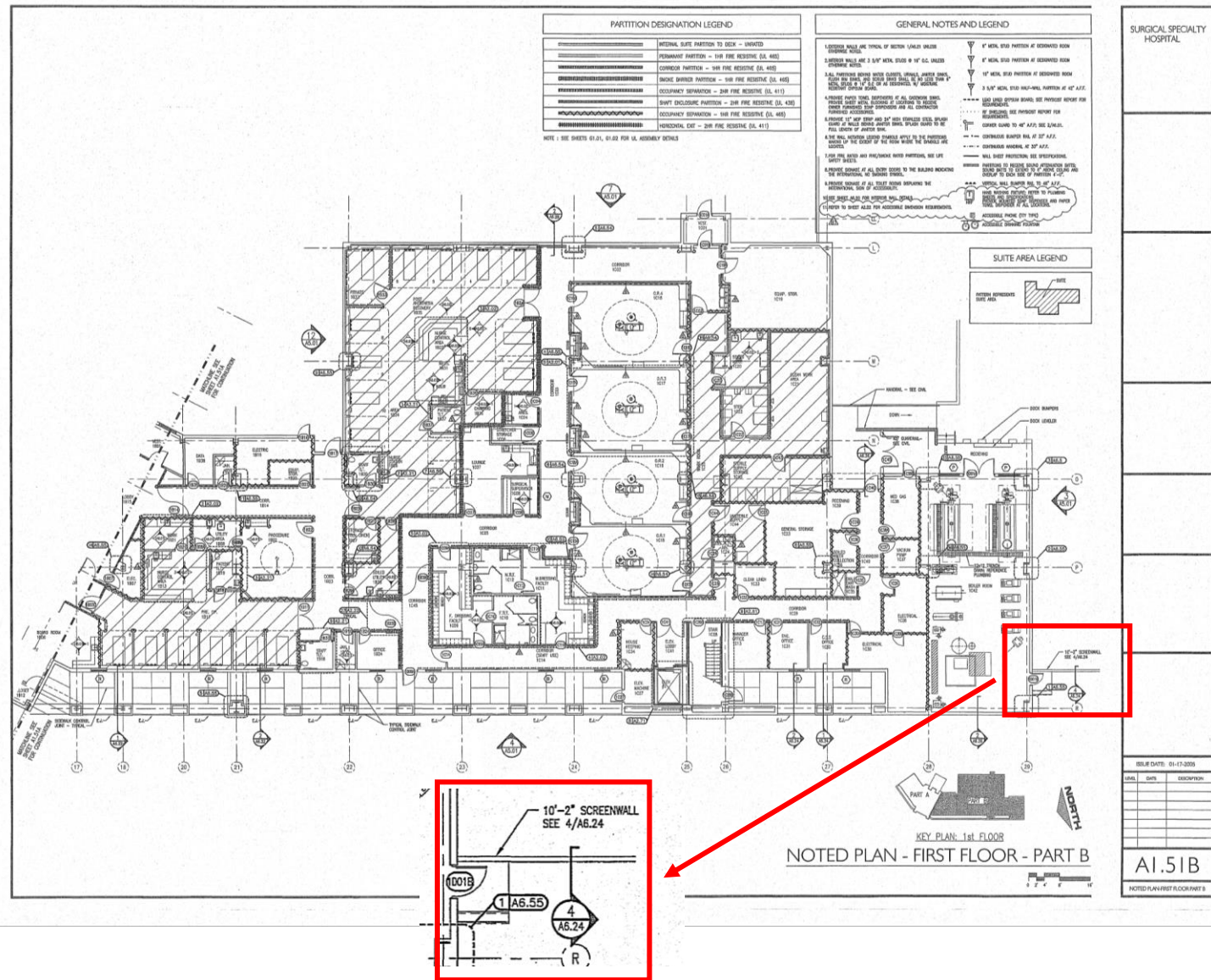


No

The exterior screen wall framing surrounding RTU equipment at the roof shall have a built up finish in the following order:

- A. building wrap, stucco over metal lath
- B. 1/2" exterior sheathing, building wrap, stucco over metal lath.
- C. 5/8" WP gypsum, building wrap, stucco over metal lath
- D. 3/4" cementitious board, plaster finish

Options:
Look into all the drawings for a call out like this

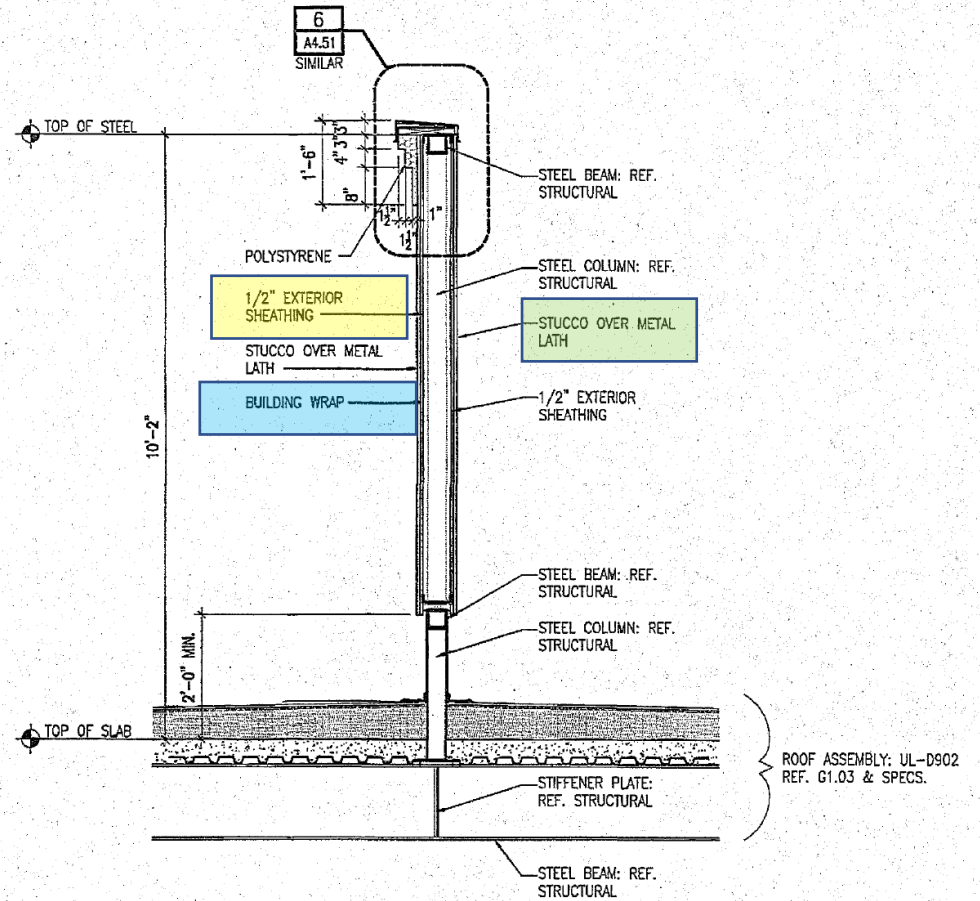


The exterior screen wall framing surrounding RTU equipment at the roof shall have a built up finish in the following order:

- A. building wrap, stucco over metal lath
- B. 1/2" exterior sheathing, building wrap, stucco over metal lath.
- C. 5/8" WP gypsum, building wrap, stucco over metal lath
- D. 3/4" cementitious board, plaster finish



Then, you are finally into the detail and you can see the actual sequence of installation



1 ROOF SCREEN WALL
A6.24



Example #3

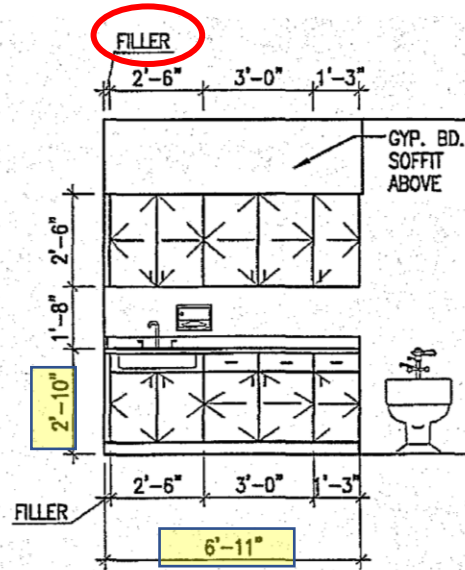


Soiled Utility Room 2B21
lower casework is _____
high and _____ long.

- A. 2'-10", 6'-9"
- B. 2'-10", 6'-11"
- C. 3'-0", 7'-0"
- D. None of the above

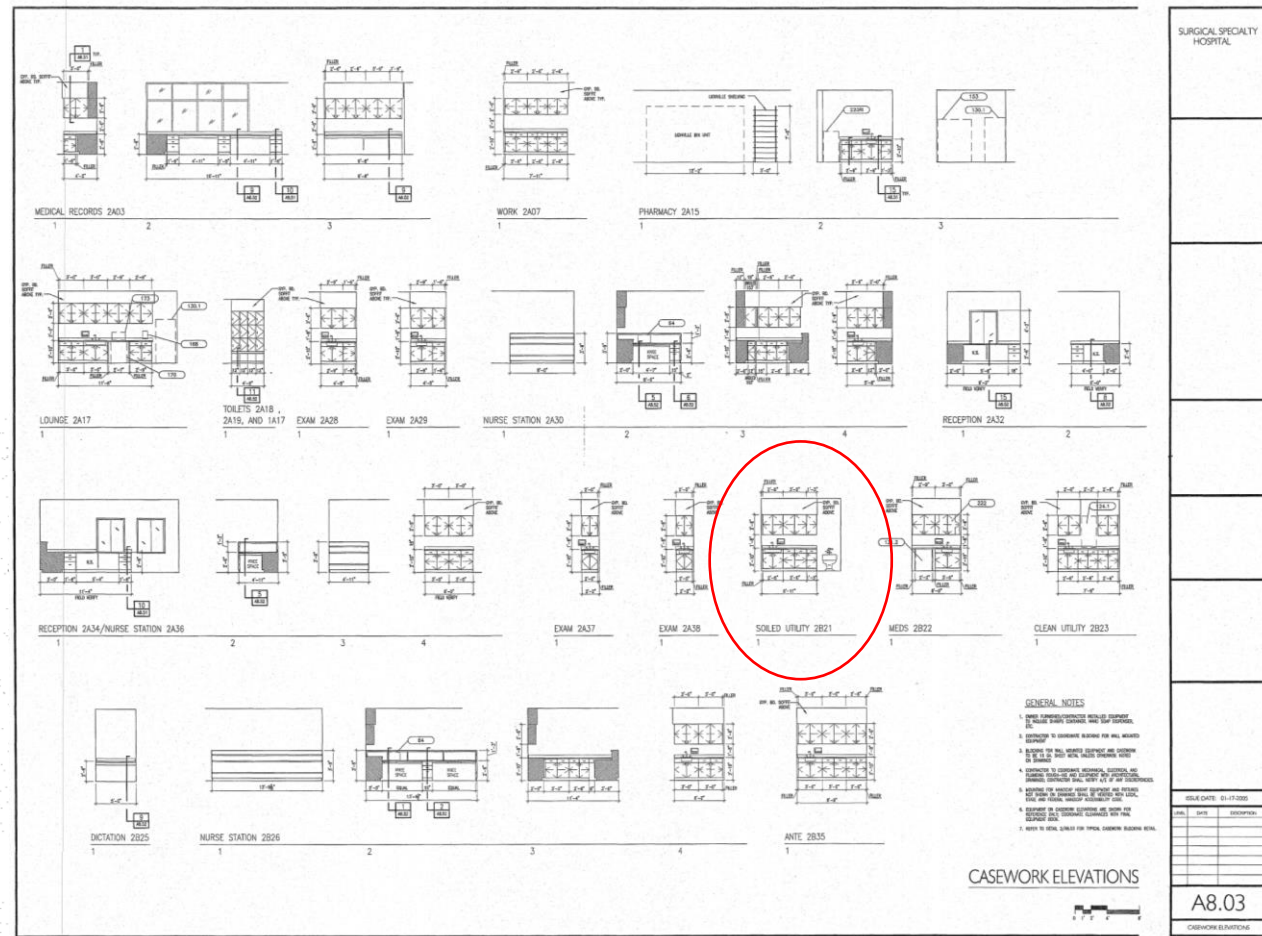


Once you found the elevation, look for dimension of casework.



SOILED UTILITY 2B21

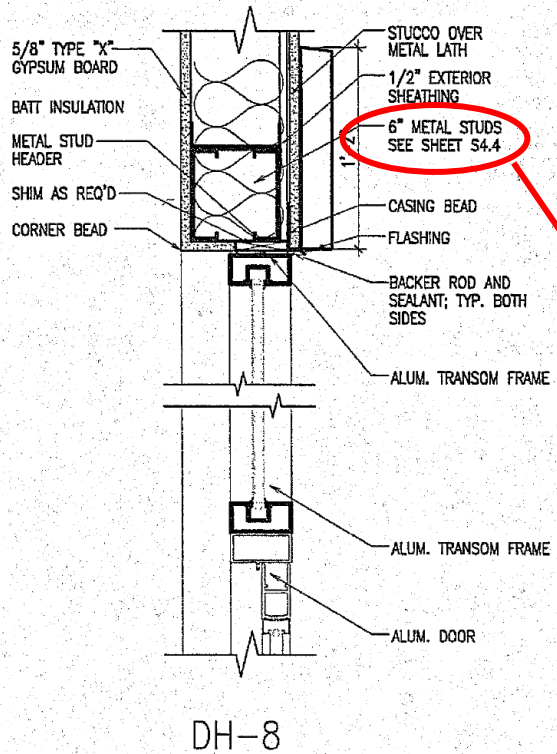
1



Example #4



The framed header assembly for door No. 1B03B shall consist of _____.



DOOR NUMBER	TYPE	WIDTH	HEIGHT 6'-8"	HEIGHT 7'-0"	PAIR	ALUMINUM	HOLLOW METAL	SOLID CORE WOOD	HOLLOW CORE WOOD	WOOD W/ PLASTIC	TEMPERED GLASS	INSULATED GLASS	WIRED GLASS	DOUBLE EGRESS	SOLID WOOD BI-FOLD	20 MINUTE LABEL	B LABEL 1 HR	C LABEL 45 MIN.	B LABEL 1 1/2 H	"S" SMOKE SEAL	TYPE	HOLLOW METAL	ALUMINUM	WOOD	HEAD	JAMB	SILL	PROVIDE DRY CONTACT IF FRAME-COORDINATE W/ THRESHOLD	3/4" UNDERCUT	HARDWARE SET NUMBER	DOOR NUMBER	ACCESSORIES		
1A01A	D3	3'-8"																															3 TIED INTO FIRE ALARM 4 MAGNETIC LOCK 5 ELECTRIC STRIKE 6 AUTOMATIC OPERATION 7 CARD READER - COORD. WITH SECURITY 8 LIGHT SEALS 9 REMOTE LOCK RELEASE	
1B03B	D1	3'-8"																							DH8	DJ2A	DS1			1	1B03B	3	6 WEATHERSTRIP	
1B03C	NL	4'-0"																																

Then go to Door Details (A7.51 from Master Drawing Index).
 Look for DH-8 for Head detail.
 Look also for the Width of the door (3'-8")

This information directs you to S4.4

HEAD DETAILS



The framed header assembly for door No. 1B03B shall consist of _____.

- A. 2-6" x 18 ga. studs with 2-6" x 18 ga. Tracks
- B. 2-4" x 18 ga. studs with 2-4" x 18 ga. Tracks
- C. 2-6" x 18 ga. studs with 3-6" x 18 ga. Tracks
- D. 2-4" x 18 ga. studs with 3-4" x 18 ga. tracks



Now that you are on S4.4, look for the Header Schedule.

HEADER SCHEDULE			
ROUGH OPENING	MEMBERS	BUILT-UP SECTION	NOTES
0'-0" TO 6'-4"	2-6", 18 Ga STUDS W/2-6", 18 Ga TRACKS		
6'-5" TO 8'-4"	2-6", 18 Ga STUDS W/2-6", 18 Ga TRACKS		
8'-5" TO 13'-0"	2-6", 18 Ga STUDS W/3-6", 14 Ga TRACKS		

NOTE:
1.) ALL MEMBERS TO HAVE 33 KSI YIELD STRENGTH.
2.) TRACK SECTIONS TO HAVE 1 1/4" LEG MIN.
3.) STUD SECTIONS HAVE 1 5/8" FLANGES, TYP. U.N.O.
4.) FASTEN EACH TRACK W/2-#1 SCREWS @ 16"c/c FOR BUILT-UP SECTION.

② HEADER SCHEDULE



Example #5



According to the plan, the ceiling finish within work room 1C25 shall be _____.

What do you need to look for?
Ceiling Plans. Go to Master Drawing Index and you will find Ceiling Plans

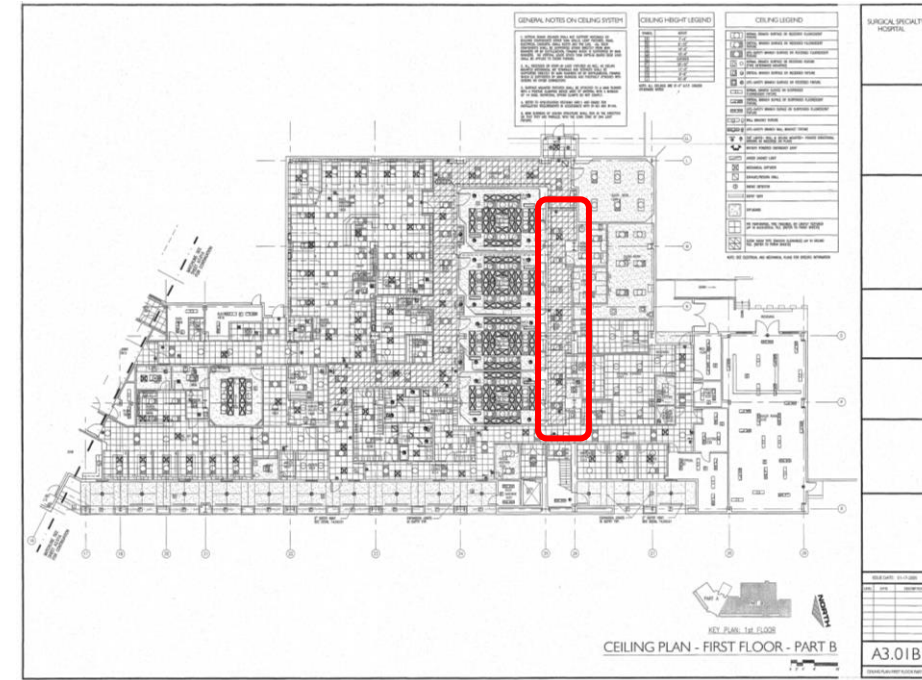
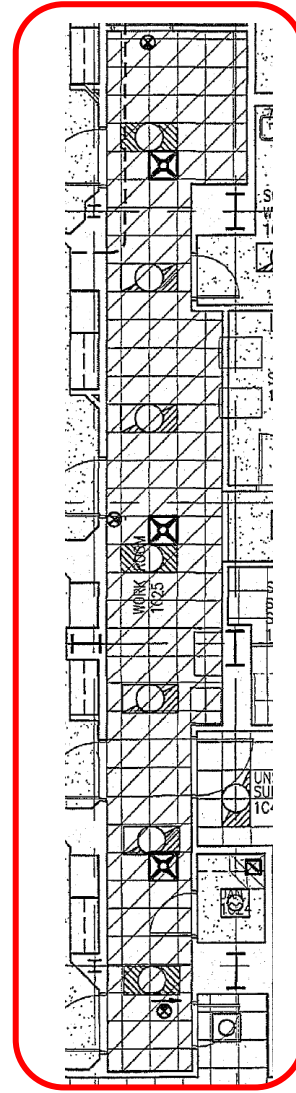
- A3.01A CEILING PLAN - 1ST FLOOR, PART A
- A3.01B CEILING PLAN - 1ST FLOOR, PART B
- A3.02A CEILING PLAN - 2ND FLOOR, PART A
- A3.02B CEILING PLAN - 2ND FLOOR, PART B

The image shows a detailed architectural drawing sheet for the Surgical Specialty Hospital. It includes several key sections:

- CODE ANALYSIS:** Lists applicable codes such as ASCE 7-10, ASCE 7-16, and ASCE 7-22, along with their respective sections.
- GENERAL NOTES:** Contains 24 numbered notes detailing construction requirements, material specifications, and coordination instructions.
- MASTER DRAWING INDEX:** A large table listing all drawings in the set, including their titles, sheet numbers, and dates. A red box highlights the 'CEILING PLAN' entries.
- ABBREVIATIONS:** A table defining symbols and abbreviations used throughout the drawings.
- MATERIAL DESIGNATIONS:** A table listing various materials and their designations, such as concrete, steel, and masonry.
- CONSULTANTS:** A list of the project's consultants, including the architect and other specialized firms.

According to the plan, the ceiling finish within work room 1C25 shall be _____.

Then, you need to find 1C25.
You can navigate to any floor plans to find them.
For example, you could use the Ceiling Plans.
And you will find 1C25 on A3.01B

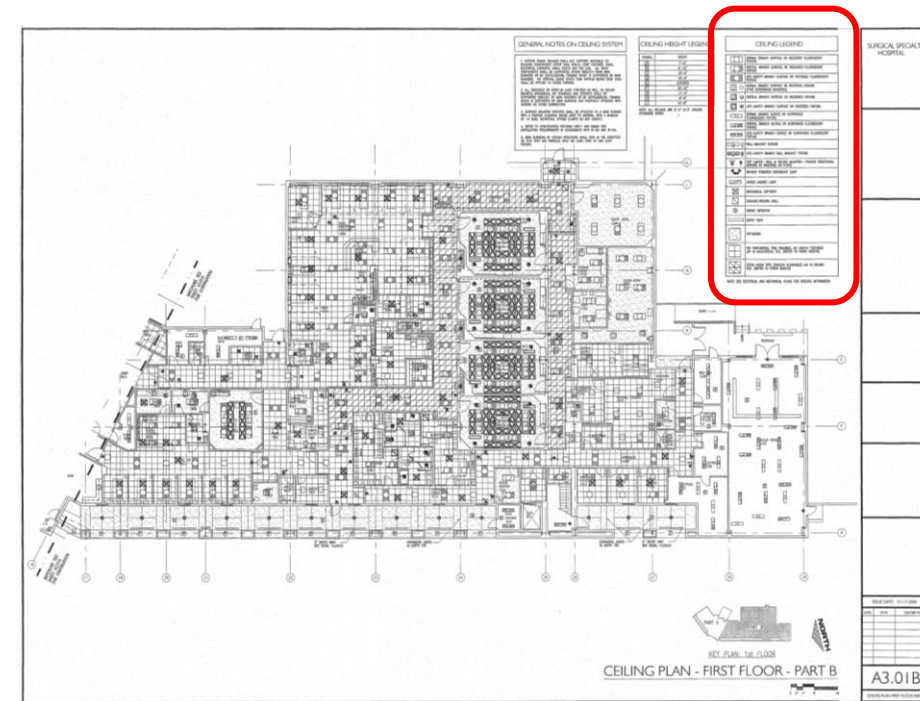


According to the plan, the ceiling finish within work room 1C25 shall be _____.

In the same drawing, you can find the Ceiling Legend.

CEILING LEGEND	
	NORMAL BRANCH SURFACE OR RECESSED FLUORESCENT FIXTURE
	CRITICAL BRANCH SURFACE OR RECESSED FLUORESCENT FIXTURE
	LIFE-SAFETY BRANCH SURFACE OR RECESSED FLUORESCENT FIXTURE
	NORMAL BRANCH SURFACE OR RECESSED FIXTURE (TYPE DETERMINES MOUNTING)
	CRITICAL BRANCH SURFACE OR RECESSED FIXTURE
	LIFE-SAFETY BRANCH SURFACE OR RECESSED FIXTURE
	NORMAL BRANCH SURFACE OR SUSPENDED FLUORESCENT FIXTURE
	CRITICAL BRANCH SURFACE OR SUSPENDED FLUORESCENT FIXTURE
	LIFE-SAFETY BRANCH SURFACE OR SUSPENDED FLUORESCENT FIXTURE
	WALL BRACKET FIXTURE
	LIFE-SAFETY BRANCH WALL BRACKET FIXTURE
	EXIT LIGHTS- WALL & CEILING MOUNTED- PROVIDE DIRECTIONAL ARROWS AS INDICATED ON PLANS
	BATTERY POWERED EMERGENCY LIGHT
	UNDER CABINET LIGHT
	MECHANICAL DIFFUSER
	EXHAUST/RETURN GRILL
	SMOKE DETECTOR
	SOFFIT VENT
	GYP. BOARD
	PIN PERFORATED, FINE FISSURED, OR LIGHTLY TEXTURED LAY IN ACOUSTICAL TILE. (REFER TO FINISH SHEETS)
	CLEAN ROOM TYPE (SMOOTH CLEANABLE) LAY IN CEILING TILE. (REFER TO FINISH SHEETS)

NOTE: SEE ELECTRICAL AND MECHANICAL PLANS FOR SPECIFIC INFORMATION










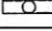
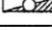
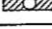
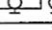
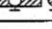

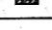
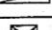

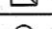
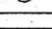
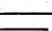

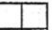
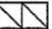
According to the plan, the ceiling finish within work room 1C25 shall be _____.

- A. pin perforated tile
- B. lightly textured tile
- C. smooth cleanable gypsum board
- D. smooth cleanable lay in tile

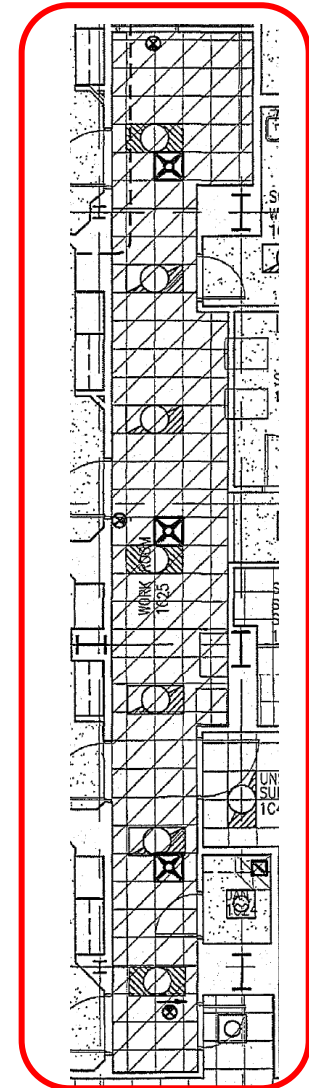
Now, put together the information you found...



 CLEAN ROOM TYPE (SMOOTH CLEANABLE) LAY IN CEILING TILE. (REFER TO FINISH SHEETS)

CEILING LEGEND	
	NORMAL BRANCH SURFACE OR RECESSED FLUORESCENT FIXTURE
	CRITICAL BRANCH SURFACE OR RECESSED FLUORESCENT FIXTURE
	LIFE-SAFETY BRANCH SURFACE OR RECESSED FLUORESCENT FIXTURE
	NORMAL BRANCH SURFACE OR RECESSED FIXTURE (TYPE DETERMINES MOUNTING)
	CRITICAL BRANCH SURFACE OR RECESSED FIXTURE
	LIFE-SAFETY BRANCH SURFACE OR RECESSED FIXTURE
	NORMAL BRANCH SURFACE OR SUSPENDED FLUORESCENT FIXTURE
	CRITICAL BRANCH SURFACE OR SUSPENDED FLUORESCENT FIXTURE
	LIFE-SAFETY BRANCH SURFACE OR SUSPENDED FLUORESCENT FIXTURE
	WALL BRACKET FIXTURE
	LIFE-SAFETY BRANCH WALL BRACKET FIXTURE
	EXIT LIGHTS- WALL & CEILING MOUNTED- PROVIDE DIRECTIONAL ARROWS AS INDICATED ON PLANS
	BATTERY POWERED EMERGENCY LIGHT
	UNDER CABINET LIGHT
	MECHANICAL DIFFUSER
	EXHAUST/RETURN GRILL
	SMOKE DETECTOR
	SOFFIT VENT
	GYP. BOARD
	PIN PERFORATED, FINE FISSURED, OR LIGHTLY TEXTURED LAY IN ACCOUSTICAL TILE. (REFER TO FINISH SHEETS)
	CLEAN ROOM TYPE (SMOOTH CLEANABLE) LAY IN CEILING TILE. (REFER TO FINISH SHEETS)

NOTE: SEE ELECTRICAL AND MECHANICAL PLANS FOR SPECIFIC INFORMATION



Homework

Homework #1

What is the minimum clear
Opening height for knee space at
the countertop in Room 1A16?

2' – 0 1/2"

2' – 6"

2' – 10"

5' – 0"

Homework #2

The floor finish for the operating
room is _____.

A. Carpet

B. sheet vinyl

C. resin

D. none of the above



See you at Part 2

Send your Homework Responses to:

OSHPD.fddisu@oshpd.ca.gov



Q&A

