

## Part 2



# Homework

## Homework #1

What is the minimum clear  
Opening height for knee space at  
the countertop in Room 1A16?

- A. 2' – 0 ½"
- B. 2' – 6"
- C. 2' – 10"
- D. 5' – 0"

## Homework #2

The floor finish for the operating  
room is \_\_\_\_\_.

- A. Carpet
- B. sheet vinyl
- C. resin
- D. none of the above



# Resolution

## Homework #1

What is the minimum clear  
Opening height for knee space at  
the countertop in Room 1A16?

- A. 2' – 0 ½"
- B. 2' – 6"
- C. 2' – 10"
- D. 5' – 0"

## Homework #2

The floor finish for the operating  
room is \_\_\_\_\_.

- A. Carpet
- B. sheet vinyl
- C. resin
- D. none of the above



What is the minimum clear  
Opening height for knee space at  
the countertop in Room 1A16?

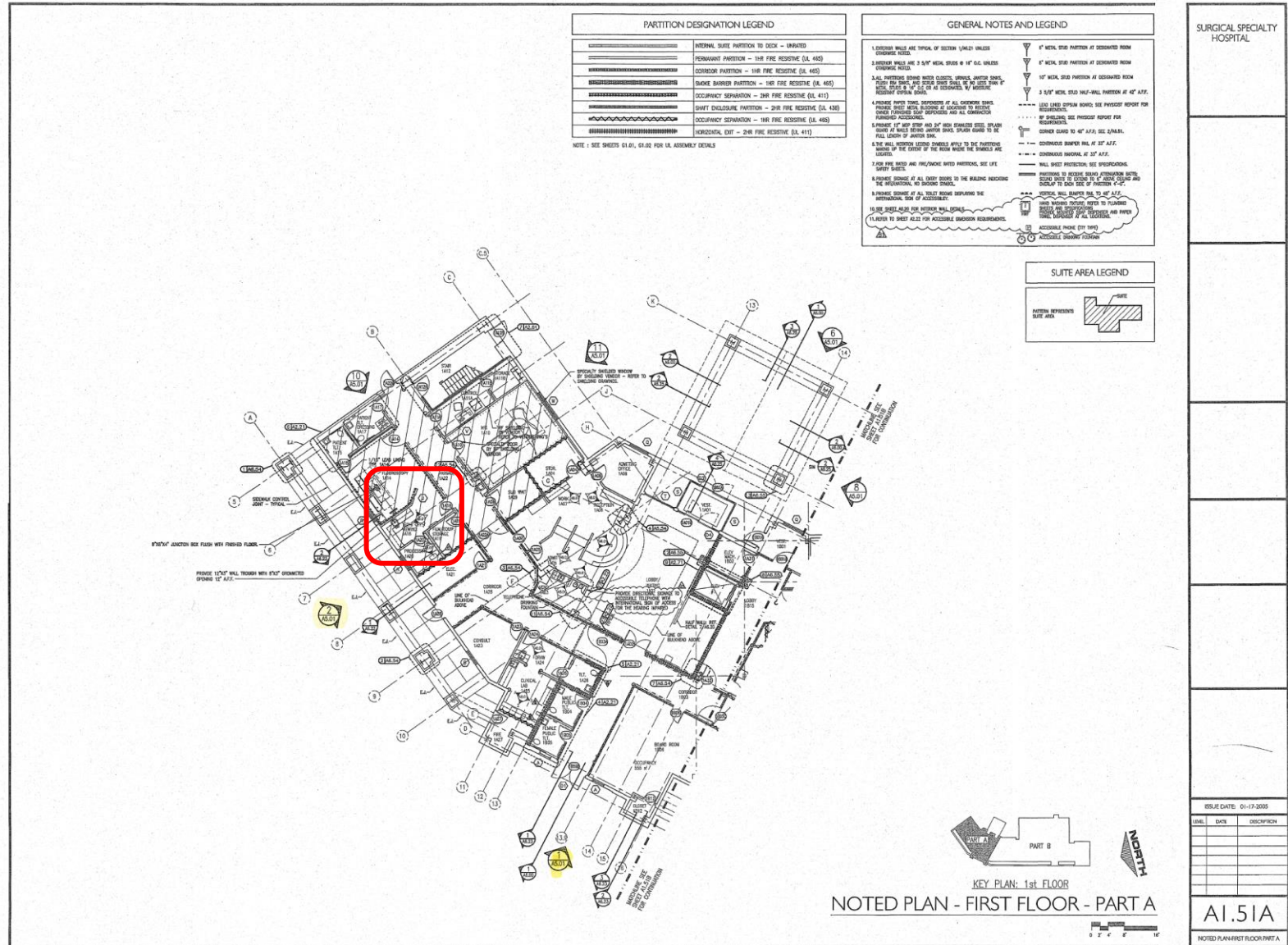
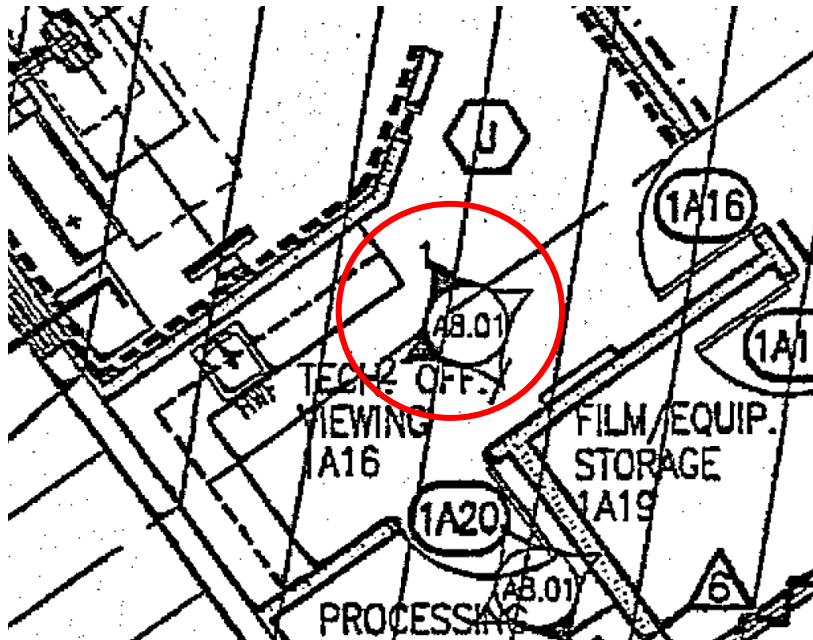
First of all, you need to find room 1A16, and look for the  
interior elevation callout. Where do you need to look?  
1A16 is on the 1<sup>st</sup> floor...

<b>A1.51A</b>	<b>NOTED PLAN – 1ST FLOOR, PART A</b>
<b>A1.51B</b>	<b>NOTED PLAN – 1ST FLOOR, PART B</b>
<b>A1.52A</b>	<b>NOTED PLAN – 2ND FLOOR, PART A</b>
<b>A1.52B</b>	<b>NOTED PLAN – 2ND FLOOR, PART B</b>

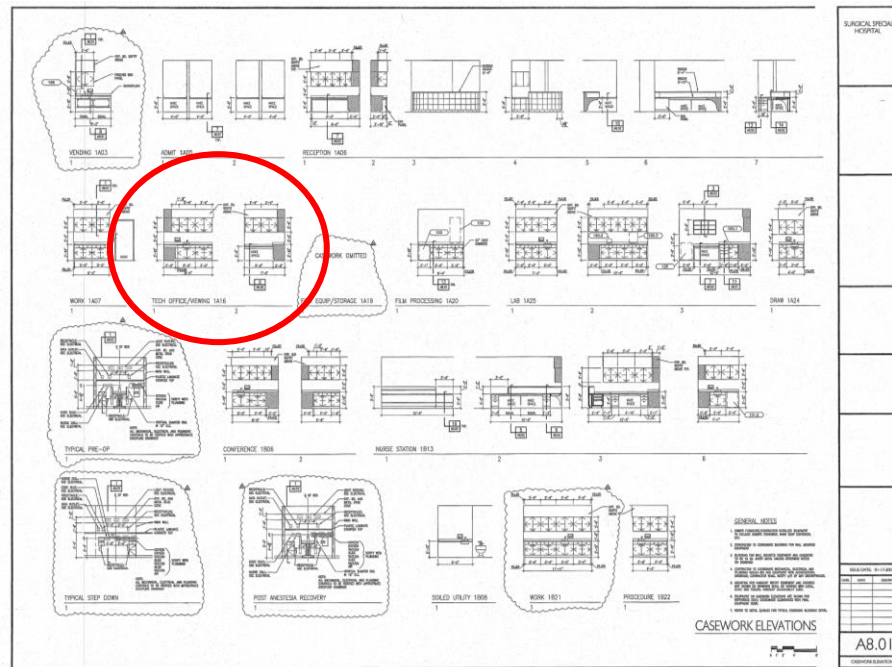


What is the minimum clear Opening height for knee space at the countertop in Room 1A16?

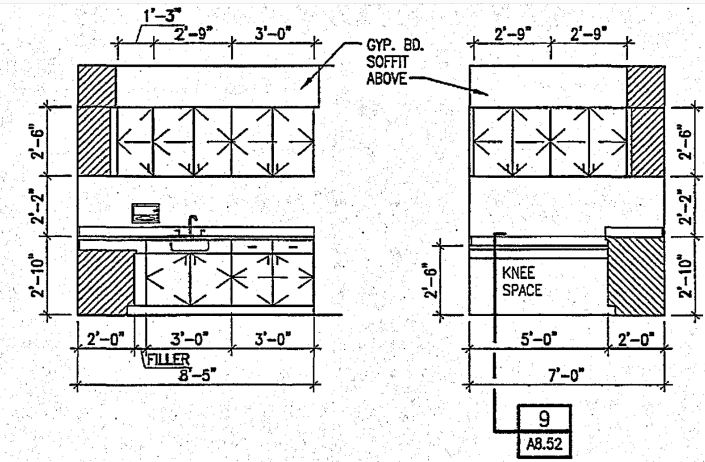
Room 1A16 is on A1.51A.  
Look for the interior elevation callout.



What is the minimum clear Opening height for knee space at the countertop in Room 1A16?



Now that you know where the interior elevation is, go to A8.01 and look for room 1A16. Look also for the dimensions.... And if there is any additional information



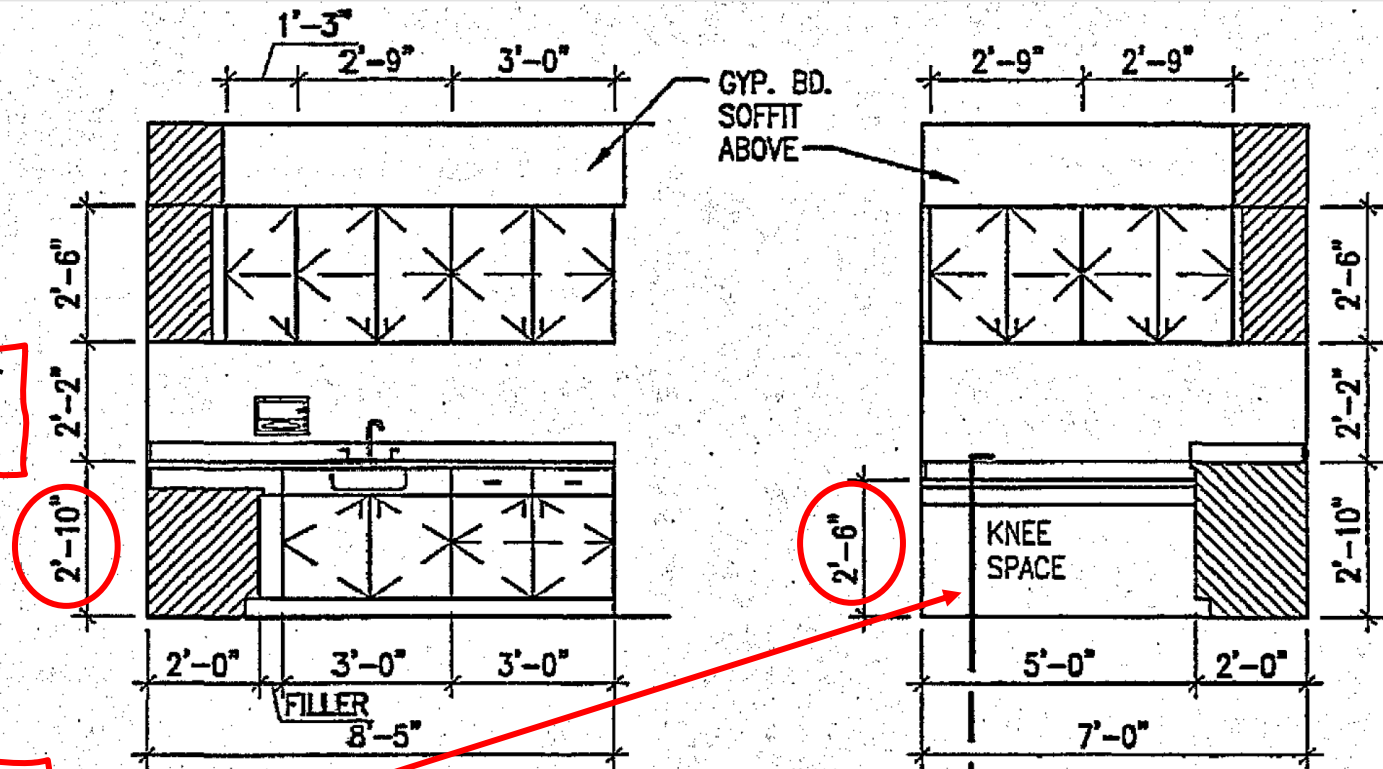
TECH OFFICE/VIEWING 1A16

1 2

What is the minimum clear Opening height for knee space at the countertop in Room 1A16?

2'-10" doesn't provide dimension for knee space

Look the indication for Knee Space. Is 2'-6" sufficient for response? Look detail 9/A8.52...



9  
A8.52

TECH OFFICE/VIEWING 1A16

1

2

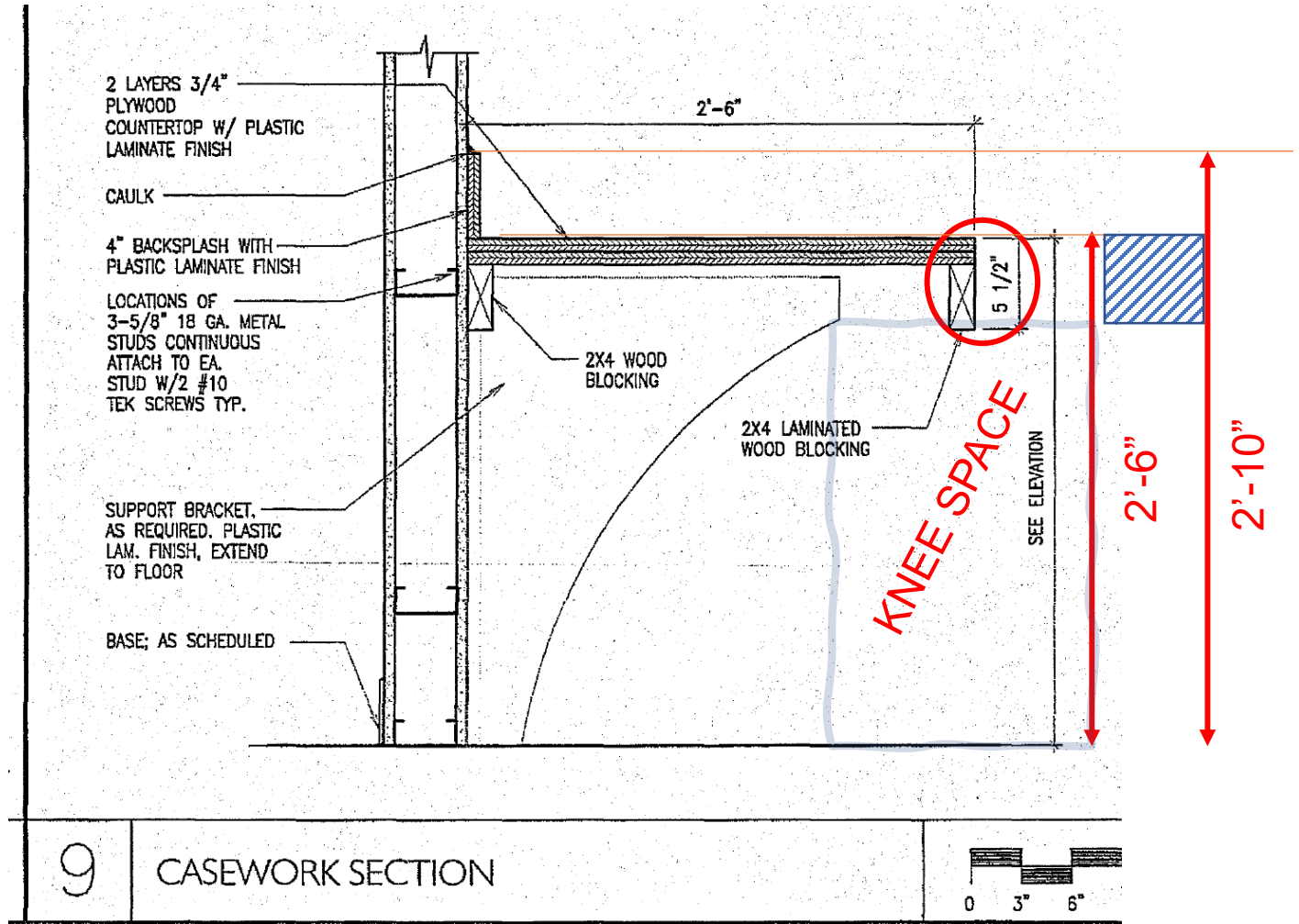


What is the minimum clear Opening height for knee space at the countertop in Room 1A16?

- A. 2' - 0 1/2"
- B. 2' - 6"
- C. 2' - 10"
- D. 5' - 0"



You need to consider, for the actual knee space, 2'-6" minus 5 1/2" of wood blocking





The floor finish for the operating room is \_\_\_\_\_.

What do you need to look for?  
Finishes.

Go to Master Drawing Index and  
you will find Pattern Plans

F2.01A      PATTERN PLAN – 1ST FLOOR, PART A  
 F2.01B      PATTERN PLAN – 1ST FLOOR, PART B  
 F2.02A      PATTERN PLAN – 2ND FLOOR, PART A  
 F2.02B      PATTERN PLAN – 2ND FLOOR, PART B

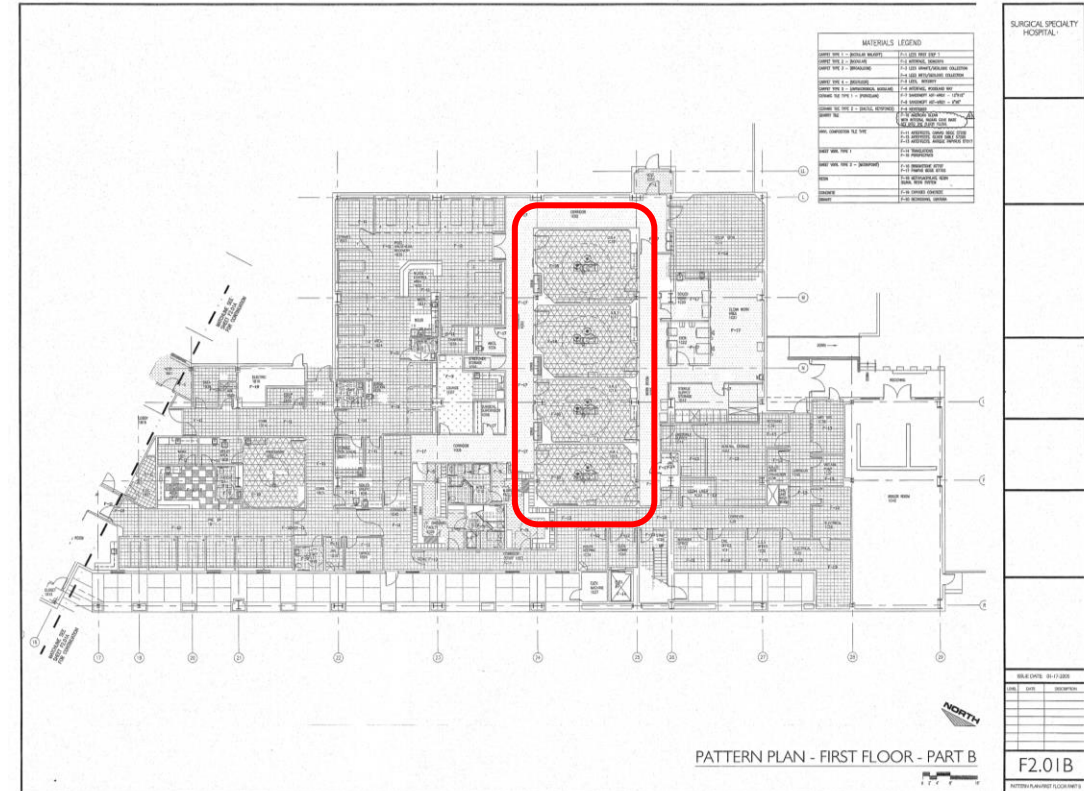
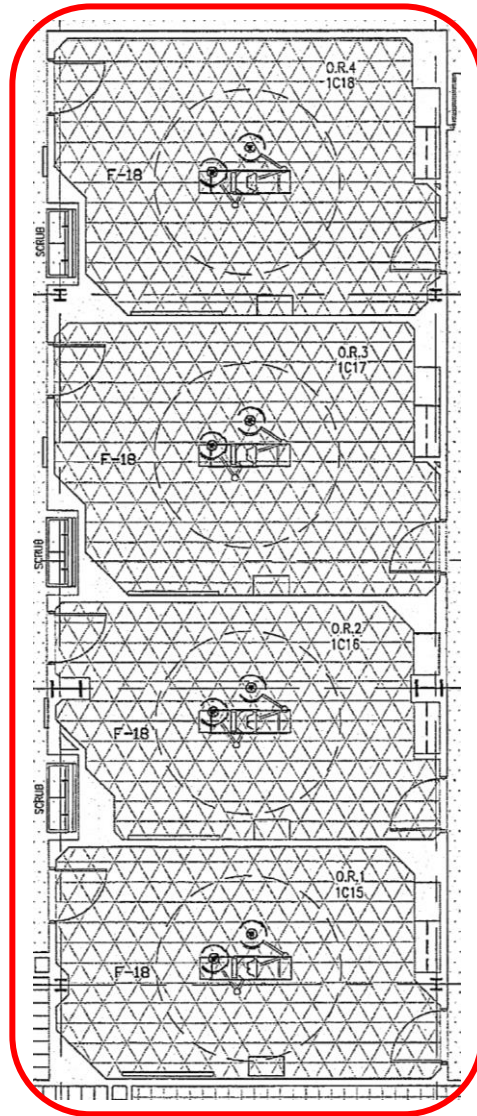
The floor finish for the operating room is \_\_\_\_\_.

Then, you need to find the Operating Rooms.

You can navigate to any floor plans to find them.

For example, you could use the Pattern Plans.

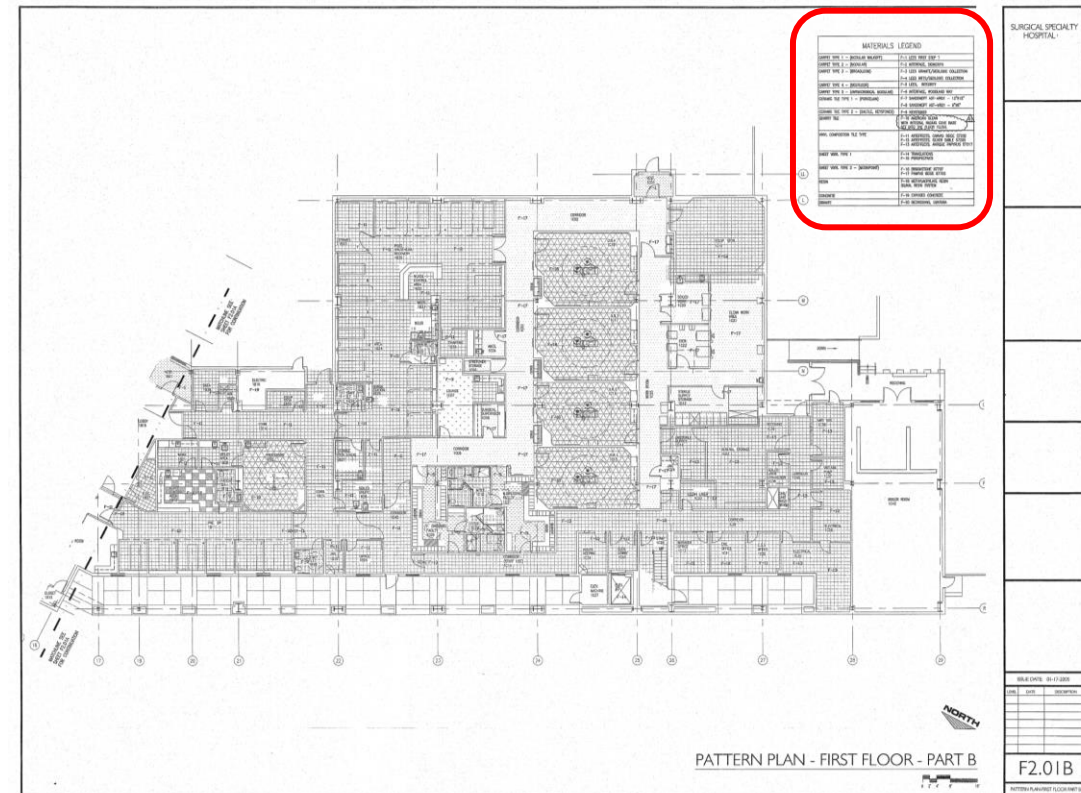
And you will find them on F2.01B



The floor finish for the operating room is \_\_\_\_\_.

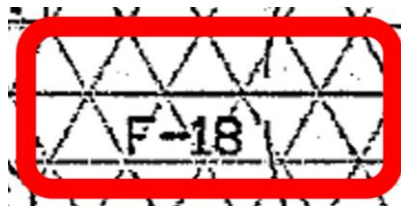
In the same drawing, you can also find the Materials Legend

MATERIALS LEGEND	
CARPET TYPE 1 - (MODULAR WALKOFF)	F-1. LEES FIRST STEP T
CARPET TYPE 2 - (MODULAR)	F-2 INTERFACE, BIOMORPH
CARPET TYPE 3 - (BROADLOOM)	F-3 LEES GRANITE/GEOLOGIC COLLECTION F-4 LEES RIFTS/GEOLOGIC COLLECTION
CARPET TYPE 4 - (NEOFLOOR)	F-5 LEES, INTEGRITY
CARPET TYPE 5 - (ANTIMICROBIAL MODULAR)	F-6 INTERFACE, WOODLAND WAY
CERAMIC TILE TYPE 1 - (PORCELAIN)	F-7 SANDSWEPT AOT-MR21 - 12"X12" F-8 SANDSWEPT AOT-MR21 - 6"X6"
CERAMIC TILE TYPE 2 - (DAL TILE, KEYSTONES)	F-9 KEYSTONES
QUARRY TILE	F-10 AMERICAN OLEAN WITH INTEGRAL RADIUS COVE BASE SET INTO THE FLOOR FLUSH.
VINYL COMPOSITION TILE TYPE	F-11 ARTEFFECTS, CANVAS BEIGE 57202 F-12 ARTEFFECTS, SILVER SABLE 57205 F-13 ARTEFFECTS, ANTIQUE PAPHYRUS 57217
SHEET VINYL TYPE 1	F-14 TRANSLATIONS F-15 PERSPECTIVES
SHEET VINYL TYPE 2 - (MEDINPOINT)	F-16 BROOKSTONE 87707 F-17 PAMPAS BEIGE 87705
RESIN	F-18 METHYLACRYLATE RESIN SILKAL RESIN SYSTEM
CONCRETE	F-19 EXPOSED CONCRETE
GRANITE	F-20 BEDROSIANS, UBATUBA

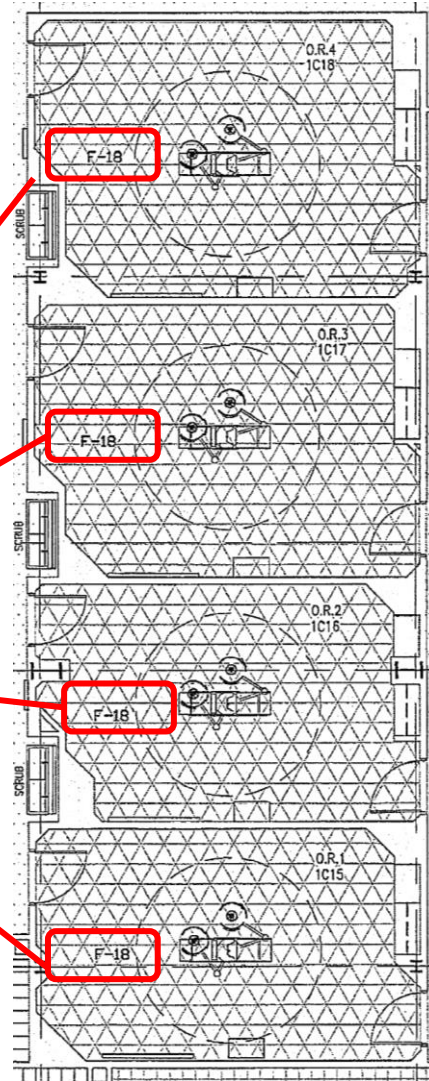


The floor finish for the operating room is \_\_\_\_\_.

- A. Carpet
- B. sheet vinyl
- C. resin
- D. none of the above



RESIN	F-18 METHYLACRYLATE RESIN SILKAL RESIN SYSTEM
-------	--



MATERIALS LEGEND	
CARPET TYPE 1 - (MODULAR WALKOFF)	F-1 LEES FIRST STEP T
CARPET TYPE 2 - (MODULAR)	F-2 INTERFACE, BIOMORPH
CARPET TYPE 3 - (BROADLOOM)	F-3 LEES GRANITE/GEOLOGIC COLLECTION
	F-4 LEES RIFTS/GEOLOGIC COLLECTION
CARPET TYPE 4 - (MEDFLOOR)	F-5 LEES, INTEGRITY
CARPET TYPE 5 - (ANTIMICROBIAL MODULAR)	F-6 INTERFACE, WOODLAND WAY
CERAMIC TILE TYPE 1 - (PORCELAIN)	F-7 SANDSWEEP AOT-MR21 - 12"X12"
	F-8 SANDSWEEP AOT-MR21 - 6"X6"
CERAMIC TILE TYPE 2 - (DALTILE, KEYSTONES)	F-9 KEYSTONES
QUARRY TILE	F-10 AMERICAN OLEAN WITH INTEGRAL RADIUS COVE BASE SET INTO THE FLOOR FLUSH.
VINYL COMPOSITION TILE TYPE	F-11 ARTEFFECTS, CANVAS BEIGE 57202
	F-12 ARTEFFECTS, SILVER SABLE 57205
	F-13 ARTEFFECTS, ANTIQUE PAPYRUS 57217
SHEET VINYL TYPE 1	F-14 TRANSLATIONS
	F-15 PERSPECTIVES
SHEET VINYL TYPE 2 - (MEDINPOINT)	F-16 BROOKSTONE 87707
	F-17 BAMPAS BEIGE 87705
RESIN	F-18 METHYLACRYLATE RESIN SILKAL RESIN SYSTEM
CONCRETE	F-19 EXPOSED CONCRETE
GRANITE	F-20 BEDROSIANS, UBATUBA



Q&A

