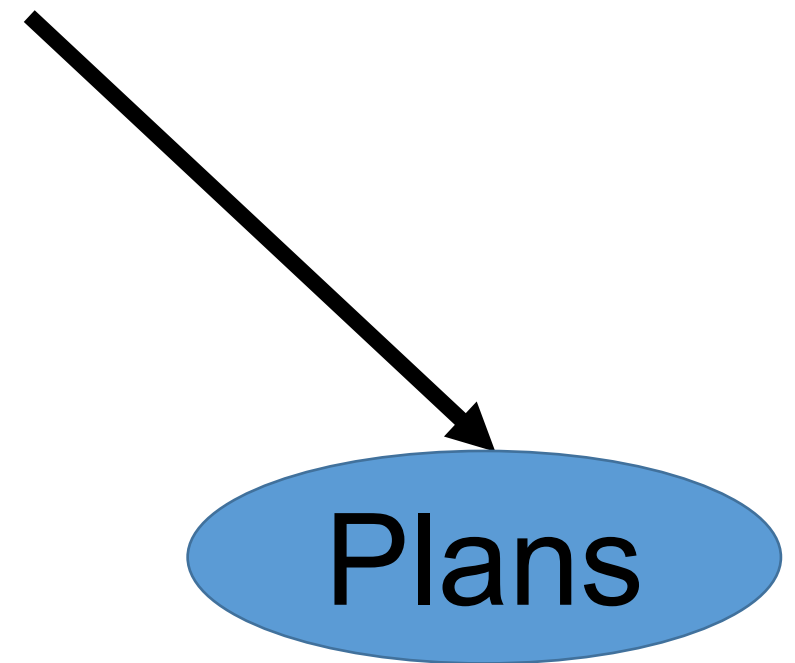
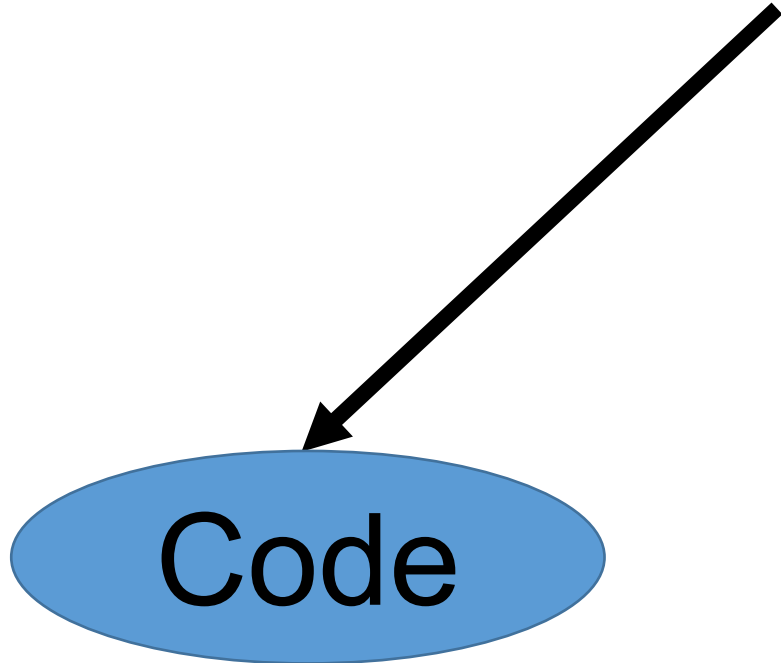


# “IOR Certification Code/Plans Questions” Part 1 Structural



# Structural



# Code

- Class A 20 Questions
- Class B 12 Questions (Anchorage and Bracing)
- Class C 20 Question (Anchorage and Bracing)



# Plan

- Class A 28 Questions
- Class B 6 Questions (Anchorage & Bracing)



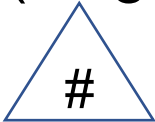
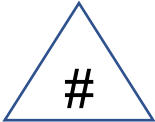
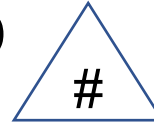
# Structural Plan Questions

- Let's analyze the questions with the correct responses...
- How to read/interpret the question
- How to arrive to a response (sometimes it is easy, sometimes it is not easy)
- Remember: Plans are not perfect. And this is why RFIs exist during construction



# Table of contents

- Drawing Content (Original set, RFI, ASI, ACD)

• delta symbol RFI  ASI  ACD   
RFI# ASI# ACD#

- Depending on the size and complexity of the project
- the information provided on the fire and life safety drawings **should provide a clear description of how the project complies with the various provisions of the CBC.** Some of the general information for the project may also appear on the drawing title sheet.
- Also, much of the specific information will be contained in the body of drawing details and schedules.



# Table of contents

DESIGNATOR	NAME
	Cover Sheet
G	General
H	Hazardous Materials
V	Survey / Mapping
B	Geotechnical
C	Civil
L	Landscape
S	Structural
A	Architectural
I	Interiors
Q	Equipment
F	Fire Protection
P	Plumbing

D	Process
M	Mechanical
E	Electrical
W	Distributed Energy
T	Telecommunications
R	Resource
X	Other Disciplines
Z	Contractor / Shop Drawings
O	Operations



# Sheet Types

DESIGNATOR	NAME
0	General: Symbol legend, abbreviations, general notes
1	Plans
2	Elevations
3	Sections
4	Large Scale Drawings: plans, elevations, sections (NOT details)
5	Details
6	Schedules and Diagrams
7	User Defined
8	User Defined
9	3D drawings: isometric, perspective, photos





# MASTER DRAWING INDEX:

C-0 COVER SHEET  
 G1.01 GENERAL NOTES/CODE ANALYSIS/LEGENDS  
 G1.02 U.L. ASSEMBLIES  
 G1.03 U.L. ASSEMBLIES

C-0 COVER SHEET  
 G1.01 GENERAL NOTES/CODE ANALYSIS/LEGENDS  
 G1.02 U.L. ASSEMBLIES  
 G1.03 U.L. ASSEMBLIES

### ARCHITECTURAL PLANS

AD.01 ARCHITECTURAL SITE PLAN  
 AD.51 SITE DETAILS  
 LS1.01 LIFE SAFETY PLAN - 1ST FLOOR, OVERALL  
 LS1.01A LIFE SAFETY PLAN - 1ST FLOOR, PART A  
 LS1.10 LIFE SAFETY PLAN - 1ST FLOOR, PART B  
 LS1.02 LIFE SAFETY PLAN - 2ND FLOOR, OVERALL  
 LS1.02A LIFE SAFETY PLAN - 2ND FLOOR, PART A  
 LS1.02B LIFE SAFETY PLAN - 2ND FLOOR, PART B  
 A1.00A OVERALL FLOOR PLAN - 1ST FLOOR  
 A1.00B OVERALL FLOOR PLAN - 2ND FLOOR  
 A1.01A DIMENSION PLAN - 1ST FLOOR, PART A  
 A1.01B DIMENSION PLAN - 1ST FLOOR, PART B  
 A1.02A DIMENSION PLAN - 2ND FLOOR, PART A  
 A1.02B DIMENSION PLAN - 2ND FLOOR, PART B  
 A1.51A NOTED PLAN - 1ST FLOOR, PART A  
 A1.51B NOTED PLAN - 1ST FLOOR, PART B  
 A1.52A NOTED PLAN - 2ND FLOOR, PART A  
 A1.52B NOTED PLAN - 2ND FLOOR, PART B  
 A1.81A EQUIPMENT PLAN - 1ST FLOOR, PART A  
 A1.81B EQUIPMENT PLAN - 1ST FLOOR, PART B  
 A1.82A EQUIPMENT PLAN - 2ND FLOOR, PART A  
 A1.82B EQUIPMENT PLAN - 2ND FLOOR, PART B  
 A2.01 ENLARGED PLANS & ELEVATIONS  
 A2.02 ENLARGED PLANS & ELEVATIONS  
 A2.21 ENLARGED PLANS: TOILETS  
 A2.22 ENLARGED PLANS & ELEVATIONS  
 A2.61 VERTICAL TRANSPORT: STAIRWELLS  
 A2.71 VERTICAL TRANSPORT: ELEVATORS  
 A3.01A CEILING PLAN - 1ST FLOOR, PART A  
 A3.01B CEILING PLAN - 1ST FLOOR, PART B  
 A3.02A CEILING PLAN - 2ND FLOOR, PART A  
 A3.02B CEILING PLAN - 2ND FLOOR, PART B  
 A3.51 CEILING DETAILS  
 A4.01 ROOF PLAN  
 A4.51 ROOF DETAILS  
 A5.01 EXTERIOR ELEVATIONS  
 A5.02 EXTERIOR ELEVATIONS - ENLARGED  
 A5.03 EXTERIOR ELEVATIONS - ENLARGED  
 A6.00 BUILDING SECTION  
 A6.20 INTERIOR WALL TYPES/DETAILS  
 A6.21 WALL SECTIONS  
 A6.22 WALL SECTIONS  
 A6.23 WALL SECTIONS  
 A6.24 WALL SECTIONS  
 A6.25 WALL SECTIONS  
 A6.26 WALL SECTIONS  
 A6.51 GENERAL DETAILS  
 A6.52 GENERAL DETAILS  
 A6.53 GENERAL DETAILS  
 A6.54 GENERAL DETAILS  
 A6.55 GENERAL DETAILS  
 A6.56 GENERAL DETAILS  
 A7.01 DOOR SCHEDULE  
 A7.02 WINDOW ELEVATIONS  
 A7.51 DOOR DETAILS  
 A7.52 WINDOW DETAILS  
 A8.01 CASEWORK ELEVATIONS  
 A8.02 CASEWORK ELEVATIONS  
 A8.03 CASEWORK ELEVATIONS  
 A8.51 CASEWORK DETAILS  
 A8.52 CASEWORK DETAILS  
 A8.53 CASEWORK DETAILS  
 F1.01A FURNISHING PLAN - 1ST FLOOR, PART A  
 F1.01B FURNISHING PLAN - 1ST FLOOR, PART B  
 F1.02A FURNISHING PLAN - 2ND FLOOR, PART A  
 F1.02B FURNISHING PLAN - 2ND FLOOR, PART B  
 F2.01A PATTERN PLAN - 1ST FLOOR, PART A  
 F2.01B PATTERN PLAN - 1ST FLOOR, PART B  
 F2.02A PATTERN PLAN - 2ND FLOOR, PART A  
 F2.02B PATTERN PLAN - 2ND FLOOR, PART B

### KITCHEN PLANS

FS1.1 KITCHEN EQUIPMENT  
 FS1.2 KITCHEN PLUMBING  
 FS1.3 KITCHEN ELECTRICAL  
 FS1.4 KITCHEN VENTILATION

### STRUCTURAL PLANS

SBP REBORN NOTES  
 S1.1 FOUNDATION PLAN: PART A  
 S1.2 FOUNDATION PLAN: PART B  
 S2.1 FOUNDATION SECTIONS & DETAILS  
 S2.2 FOUNDATION SECTIONS & DETAILS  
 S2.3 FOUNDATION SECTIONS & DETAILS  
 S3.1 SECOND FLOOR FRAMING PLAN: PART A  
 S3.2 SECOND FLOOR FRAMING PLAN: PART B  
 S3.3 ROOF FRAMING PLAN: PART A  
 S3.4 ROOF FRAMING PLAN: PART B  
 S4.1 FRAMING SECTIONS & DETAILS  
 S4.2 FRAMING SECTIONS & DETAILS  
 S4.3 FRAMING SECTIONS & DETAILS  
 S4.4 EXTERIOR STUD WALL ELEVATIONS & DETAILS  
 S5.1 GRABYR COLUMN: SCHEDULE & DETAILS  
 S5.2 FRAME ELEVATIONS  
 S5.3 FRAME ELEVATIONS  
 S5.5 BEAM/COLUMN CONNECTIONS

### MECHANICAL PLANS

M0.01 HVAC SCHEDULES  
 M0.02 HVAC SCHEDULES  
 M0.03 HVAC SCHEDULES  
 M0.04 HVAC VENTILATION TABLE  
 M0.05 HVAC VENTILATION TABLE  
 M0.06 HVAC VENTILATION TABLE  
 M0.07 HVAC VENTILATION TABLE  
 M2.01 HVAC NEW CONSTRUCTION-1st FLOOR: PART A  
 M2.02 HVAC PIPING-1st FLOOR: PART A  
 M2.03 HVAC NEW CONSTRUCTION-1st FLOOR: PART B  
 M2.04 HVAC PIPING-1st FLOOR: PART B  
 M2.05 ROOF PLANK: PART A  
 M2.06 ROOF PLANK: PART B  
 M2.07 LARGE SCALE MECHANICAL ROOM  
 M2.08 LARGE SCALE SECTIONS  
 M3.01 HVAC CONTROLS  
 M3.02 HVAC CONTROLS  
 M4.01 HVAC DETAILS  
 M4.02 HVAC DETAILS  
 M5.01 HVAC DETAILS  
 M5.02 HVAC DETAILS  
 M6.01 HVAC NEW CONSTRUCTION-2nd FLOOR: PART A  
 M6.02 HVAC PIPING-2nd FLOOR: PART A  
 M6.03 HVAC NEW CONSTRUCTION-2nd FLOOR: PART B  
 M6.04 HVAC PIPING-2nd FLOOR: PART B

### PLUMBING PLANS

PL0.01 PLUMBING SCHEDULES  
 PL0.02 SITE PLAN: PLUMBING  
 PL1.01 UNDERGROUND PLUMBING-1st FLOOR: PART A  
 PL1.02 UNDERGROUND PLUMBING-1st FLOOR: PART B  
 PL1.01 PLUMBING-1st FLOOR: PART A  
 PL1.02 PLUMBING-1st FLOOR: PART B  
 PL1.03 PLUMBING-2nd FLOOR: PART A  
 PL1.04 PLUMBING-2nd FLOOR: PART B  
 PL1.05 PLUMBING-ROOF: PART A  
 PL1.06 PLUMBING-ROOF: PART B  
 P2.01 MEDICAL GAS-1st FLOOR: PART A  
 P2.02 MEDICAL GAS-1st FLOOR: PART B  
 P2.03 MEDICAL GAS-2nd FLOOR: PART A  
 P2.04 MEDICAL GAS-2nd FLOOR: PART B  
 P3.01 LARGE SCALE PLUMBING: MECHANICAL ROOM  
 P3.02 LARGE SCALE PLUMBING: KITCHEN  
 P4.01 PLUMBING RISERS  
 P5.01 PLUMBING DETAILS  
 P5.02 PLUMBING DETAILS

### ELECTRICAL PLANS

EO.01 ELECTRICAL INDEX & SCHEDULES  
 EO.02 ELECTRICAL LEGENDS  
 EO.03 ELECTRICAL EQUIPMENT CONNECTION SCHEDULES  
 EO.04 ELECTRICAL EQUIPMENT SCHEDULES  
 E2.01 ELECTRICAL-SITE PLAN  
 E2.01 LIGHTING-1st FLOOR: PART A  
 E2.02 LIGHTING-1st FLOOR: PART B  
 E2.03 LIGHTING-2nd FLOOR: PART A  
 E2.04 LIGHTING-2nd FLOOR: PART B  
 E3.01 POWER-1st FLOOR: PART A  
 E3.02 POWER-1st FLOOR: PART B  
 E3.03 POWER-2nd FLOOR: PART A  
 E3.04 POWER-2nd FLOOR: PART B  
 E4.01 SYSTEMS-1st FLOOR: PART A  
 E4.02 SYSTEMS-1st FLOOR: PART B  
 E4.03 SYSTEMS-2nd FLOOR: PART A  
 E4.04 SYSTEMS-2nd FLOOR: PART B  
 E5.01 ELECTRICAL-ROOF: PART A  
 E5.02 ELECTRICAL-ROOF: PART B  
 E6.01 LARGE SCALE ELECTRICAL  
 E6.02 LARGE SCALE ELECTRICAL  
 E7.01 ELECTRICAL POWER DISTRIBUTION: RISER  
 E7.02 ELECTRICAL POWER DISTRIBUTION: NORMAL ONE LINE DIAGRAM  
 E7.03 ELECTRICAL POWER DISTRIBUTION: ESSENTIAL ONE LINE DIAGRAM  
 E7.04 ELECTRICAL POWER DISTRIBUTION: ESSENTIAL ONE LINE DIAGRAM  
 E8.01 TELECOMMUNICATION DETAILS  
 E8.02 ELECTRICAL DETAILS  
 E9.01 ELECTRICAL PANELBOARD SCHEDULES: NORMAL SYSTEM  
 E9.02 ELECTRICAL PANELBOARD SCHEDULES: ESSENTIAL SYSTEM  
 E9.03 ELECTRICAL PANELBOARD SCHEDULES: ESSENTIAL SYSTEM

### FIRE SPRINKLER PLAN

FP-1 COVER SHEET  
 FP-2 FIRST FLOOR PART A PIPING PLAN  
 FP-3 FIRST FLOOR PART B PIPING PLAN  
 FP-4 FIRST FLOOR PART A RCP  
 FP-5 FIRST FLOOR PART B RCP  
 FP-6 SECOND FLOOR FIRE SPRINKLER PIPING PLAN  
 FP-7 SECOND FLOOR RCP

### SEISMIC RESTRAINT

SR A1 SEISMIC RESTRAINT ARCHITECTURAL DETAIL  
 SR A2 SEISMIC RESTRAINT ARCHITECTURAL DETAIL  
 SR A3 SEISMIC RESTRAINT ARCHITECTURAL DETAIL  
 SR A4 SEISMIC RESTRAINT ARCHITECTURAL DETAIL  
 SR A5 SEISMIC RESTRAINT ARCHITECTURAL DETAIL  
 SR A6 SEISMIC RESTRAINT ARCHITECTURAL DETAIL  
 SR A7 SEISMIC RESTRAINT ARCHITECTURAL DETAIL  
 SR A8 SEISMIC RESTRAINT ARCHITECTURAL DETAIL  
 SR A9 SEISMIC RESTRAINT ARCHITECTURAL DETAIL  
 SR A10 SEISMIC RESTRAINT ARCHITECTURAL DETAIL  
 SR A11 SEISMIC RESTRAINT ARCHITECTURAL DETAIL  
 SR A12 SEISMIC RESTRAINT ARCHITECTURAL DETAIL  
 SR G1 SEISMIC RESTRAINT GENERAL DETAIL  
 SR M1 SEISMIC RESTRAINT MECHANICAL DETAIL  
 SR M2 SEISMIC RESTRAINT MECHANICAL DETAIL  
 SR M3 SEISMIC RESTRAINT MECHANICAL DETAIL  
 SR M4 SEISMIC RESTRAINT MECHANICAL DETAIL  
 SR M5 SEISMIC RESTRAINT MECHANICAL DETAIL  
 SR E1 SEISMIC RESTRAINT ELECTRICAL DETAIL  
 SR E2 SEISMIC RESTRAINT ELECTRICAL DETAIL  
 SR E3 SEISMIC RESTRAINT ELECTRICAL DETAIL  
 SR P1 SEISMIC RESTRAINT PLUMBING DETAIL



# MASTER DRAWING INDEX:

**C-0 COVER SHEET**

C1.01 GENERAL NOTES/GENERAL ANALYSIS/LEGENDS  
 C1.02 U/L ASSEMBLES  
 C1.03 U/L ASSEMBLES

**KITCHEN PLANS**

FS1.1 KITCHEN EQUIPMENT  
 FS1.2 KITCHEN PLUMBING  
 FS1.3 KITCHEN ELECTRICAL  
 FS1.4 KITCHEN VENTILATION

**ELECTRICAL PLANS**

EO.01 ELECTRICAL INDEX & SCHEDULES  
 EO.02 ELECTRICAL LEGENDS  
 EO.03 ELECTRICAL EQUIPMENT CONNECTION SCHEDULES  
 EO.04 ELECTRICAL EQUIPMENT SCHEDULES  
 EL.01 ELECTRICAL-SITE PLAN  
 EL.01 LIGHTING-1st FLOOR: PART A  
 EL.02 LIGHTING-1st FLOOR: PART B  
 EL.03 LIGHTING-2nd FLOOR: PART A  
 EL.04 LIGHTING-2nd FLOOR: PART B  
 ES.01 POWER-1st FLOOR: PART A  
 ES.02 POWER-1st FLOOR: PART B  
 ES.03 POWER-2nd FLOOR: PART A  
 ES.04 POWER-2nd FLOOR: PART B  
 EA.01 SYSTEMS-1st FLOOR: PART A  
 EA.02 SYSTEMS-1st FLOOR: PART B  
 EA.03 SYSTEMS-2nd FLOOR: PART A  
 EA.04 SYSTEMS-2nd FLOOR: PART B  
 ES.01 ELECTRICAL-ROOF: PART A  
 ES.02 ELECTRICAL-ROOF: PART B  
 EB.01 LARGE SCALE ELECTRICAL  
 EB.02 LARGE SCALE ELECTRICAL  
 ED.01 ELECTRICAL POWER DISTRIBUTION: RISER  
 ED.02 ELECTRICAL POWER DISTRIBUTION: NORMAL ONE LINE DIAGRAM  
 ED.03 ELECTRICAL POWER DISTRIBUTION: ESSENTIAL ONE LINE DIAGRAM  
 ED.04 ELECTRICAL POWER DISTRIBUTION: ESSENTIAL ONE LINE DIAGRAM  
 EB.01 TELECOMMUNICATION DETAILS  
 EB.02 ELECTRICAL DETAILS  
 EB.01 ELECTRICAL PANELBOARD SCHEDULES: NORMAL SYSTEM  
 EB.02 ELECTRICAL PANELBOARD SCHEDULES: ESSENTIAL SYSTEM  
 EB.03 ELECTRICAL PANELBOARD SCHEDULES: ESSENTIAL SYSTEM

**KITCHEN PLANS**

FS1.1 KITCHEN EQUIPMENT  
 FS1.2 KITCHEN PLUMBING  
 FS1.3 KITCHEN ELECTRICAL  
 FS1.4 KITCHEN VENTILATION

**STRUCTURAL PLANS**

S1.0 GENERAL NOTES  
 S1.1 FOUNDATION PLAN: PART A  
 S1.2 FOUNDATION PLAN: PART B  
 S2.1 FOUNDATION SECTIONS & DETAILS  
 S2.2 FOUNDATION SECTIONS & DETAILS  
 S2.3 FOUNDATION SECTIONS & DETAILS  
 S3.1 SECOND FLOOR FRAMING PLAN: PART A  
 S3.2 SECOND FLOOR FRAMING PLAN: PART B  
 S3.3 SECOND FLOOR FRAMING PLAN: PART B  
 S4.1 ROOF FRAMING PLAN: PART A  
 S4.2 ROOF FRAMING PLAN: PART B  
 S4.3 FRAMING SECTIONS & DETAILS  
 S4.4 FRAMING SECTIONS & DETAILS  
 S4.4 EXTERIOR STUD WALL ELEVATIONS & DETAILS  
 S5.1 GRAVITY COLLUMN: SCHEDULE & DETAILS  
 S5.2 FRAME ELEVATIONS  
 S5.3 FRAME ELEVATIONS  
 S5.3 BEAM/COLUMN CONNECTIONS

**STRUCTURAL PLANS**

S1.0 GENERAL NOTES  
 S1.1 FOUNDATION PLAN: PART A  
 S1.2 FOUNDATION PLAN: PART B  
 S2.1 FOUNDATION SECTIONS & DETAILS  
 S2.2 FOUNDATION SECTIONS & DETAILS  
 S2.3 FOUNDATION SECTIONS & DETAILS  
 S3.1 SECOND FLOOR FRAMING PLAN: PART A  
 S3.2 SECOND FLOOR FRAMING PLAN: PART B  
 S3.3 SECOND FLOOR FRAMING PLAN: PART B  
 S4.1 ROOF FRAMING PLAN: PART A  
 S4.2 ROOF FRAMING PLAN: PART B  
 S4.3 FRAMING SECTIONS & DETAILS  
 S4.4 FRAMING SECTIONS & DETAILS  
 S4.4 EXTERIOR STUD WALL ELEVATIONS & DETAILS  
 S5.1 GRAVITY COLLUMN: SCHEDULE & DETAILS  
 S5.2 FRAME ELEVATIONS  
 S5.3 FRAME ELEVATIONS

**ARCHITECTURAL PLANS**

A0.51 ARCHITECTURAL-SITE PLAN  
 A0.51 SITE DETAILS  
 LS1.01 LIFE SAFETY PLAN - 1ST FLOOR, OVERALL  
 LS1.01A LIFE SAFETY PLAN - 1ST FLOOR, PART A  
 LS1.01B LIFE SAFETY PLAN - 1ST FLOOR, PART B  
 LS1.02 LIFE SAFETY PLAN - 2ND FLOOR, OVERALL  
 LS1.02A LIFE SAFETY PLAN - 2ND FLOOR, PART A  
 LS1.02B LIFE SAFETY PLAN - 2ND FLOOR, PART B  
 A1.00A OVERALL FLOOR PLAN - 1ST FLOOR  
 A1.00B OVERALL FLOOR PLAN - 2ND FLOOR  
 A1.01A DIMENSION PLAN - 1ST FLOOR, PART A  
 A1.01B DIMENSION PLAN - 1ST FLOOR, PART B  
 A1.02A DIMENSION PLAN - 2ND FLOOR, PART A  
 A1.02B DIMENSION PLAN - 2ND FLOOR, PART B  
 A1.51A NOTED PLAN - 1ST FLOOR, PART A  
 A1.51B NOTED PLAN - 1ST FLOOR, PART B  
 A1.52A NOTED PLAN - 2ND FLOOR, PART A  
 A1.52B NOTED PLAN - 2ND FLOOR, PART B  
 A1.61A EQUIPMENT PLAN - 1ST FLOOR, PART A  
 A1.61B EQUIPMENT PLAN - 1ST FLOOR, PART B  
 A1.62A EQUIPMENT PLAN - 2ND FLOOR, PART A  
 A1.62B EQUIPMENT PLAN - 2ND FLOOR, PART B  
 A2.01 ENLARGED PLANS & ELEVATIONS  
 A2.02 ENLARGED PLANS & ELEVATIONS  
 A2.21 ENLARGED PLANS: TOILETS  
 A2.22 ENLARGED PLANS & ELEVATIONS  
 A2.61 VERTICAL TRANSPORT: STAIRWELLS  
 A2.71 VERTICAL TRANSPORT: ELEVATORS  
 A3.01A CEILING PLAN - 1ST FLOOR, PART A  
 A3.01B CEILING PLAN - 1ST FLOOR, PART B  
 A3.02A CEILING PLAN - 2ND FLOOR, PART A  
 A3.02B CEILING PLAN - 2ND FLOOR, PART B  
 A3.51 CEILING DETAILS  
 A4.01 ROOF PLAN  
 A4.51 ROOF DETAILS  
 A5.01 EXTERIOR ELEVATIONS  
 A5.02 EXTERIOR ELEVATIONS - ENLARGED  
 A5.03 EXTERIOR ELEVATIONS - ENLARGED  
 A6.00 BUILDING SECTION  
 A6.20 INTERIOR WALL TYPES/DETAILS  
 A6.21 WALL SECTIONS  
 A6.22 WALL SECTIONS  
 A6.23 WALL SECTIONS  
 A6.24 WALL SECTIONS  
 A6.25 WALL SECTIONS  
 A6.26 WALL SECTIONS  
 A6.51 GENERAL DETAILS  
 A6.52 GENERAL DETAILS  
 A6.53 GENERAL DETAILS  
 A6.54 GENERAL DETAILS  
 A6.55 GENERAL DETAILS  
 A6.56 GENERAL DETAILS  
 A7.01 DOOR SCHEDULE  
 A7.02 WINDOW ELEVATIONS  
 A7.51 DOOR DETAILS  
 A7.52 WINDOW DETAILS  
 A8.01 CASEWORK ELEVATIONS  
 A8.02 CASEWORK ELEVATIONS  
 A8.03 CASEWORK ELEVATIONS  
 A8.51 CASEWORK DETAILS  
 A8.52 CASEWORK DETAILS  
 A8.53 CASEWORK DETAILS  
 F1.01A FURNISHING PLAN - 1ST FLOOR, PART A  
 F1.01B FURNISHING PLAN - 1ST FLOOR, PART B  
 F1.02A FURNISHING PLAN - 2ND FLOOR, PART A  
 F1.02B FURNISHING PLAN - 2ND FLOOR, PART B  
 F2.01A PATTERN PLAN - 1ST FLOOR, PART A  
 F2.01B PATTERN PLAN - 1ST FLOOR, PART B  
 F2.02A PATTERN PLAN - 2ND FLOOR, PART A  
 F2.02B PATTERN PLAN - 2ND FLOOR, PART B

**MECHANICAL PLANS**

M0.00 HVAC SCHEDULES  
 M0.01 HVAC SCHEDULES  
 M0.02 HVAC SCHEDULES  
 M0.03 HVAC SCHEDULES  
 M0.04 HVAC VENTILATION TABLE  
 M0.05 HVAC VENTILATION TABLE  
 M0.06 HVAC VENTILATION TABLE  
 M0.07 HVAC VENTILATION TABLE  
 M2.01 HVAC NEW CONSTRUCTION-1st FLOOR: PART A  
 M2.02 HVAC PIPING-1st FLOOR: PART A  
 M2.03 HVAC NEW CONSTRUCTION-1st FLOOR: PART B  
 M2.04 HVAC PIPING-1st FLOOR: PART B  
 M2.05 ROOF PLUMB: PART A  
 M2.06 ROOF PLUMB: PART B  
 M2.07 LARGE SCALE MECHANICAL ROOM  
 M2.08 LARGE SCALE SECTIONS  
 M3.01 HVAC CONTROLS  
 M3.02 HVAC CONTROLS  
 M4.01 HVAC DETAILS  
 M4.02 HVAC DETAILS  
 M5.01 HVAC DETAILS  
 M5.02 HVAC DETAILS  
 M6.01 HVAC NEW CONSTRUCTION-2nd FLOOR: PART A  
 M6.02 HVAC PIPING-2nd FLOOR: PART A  
 M6.03 HVAC NEW CONSTRUCTION-2nd FLOOR: PART B  
 M6.04 HVAC PIPING-2nd FLOOR: PART B

**FIRE SPRINKLER PLAN**

FP-2 COVER SHEET  
 FP-2 FIRST FLOOR PART A PIPING PLAN  
 FP-3 FIRST FLOOR PART B PIPING PLAN  
 FP-4 FIRST FLOOR PART A RCP  
 FP-5 FIRST FLOOR PART B RCP  
 FP-6 SECOND FLOOR FIRE SPRINKLER PIPING PLAN  
 FP-7 SECOND FLOOR RCP

**SEISMIC RESTRAINT**

SR A1 SEISMIC RESTRAINT ARCHITECTURAL DETAIL  
 SR A2 SEISMIC RESTRAINT ARCHITECTURAL DETAIL  
 SR A3 SEISMIC RESTRAINT ARCHITECTURAL DETAIL  
 SR A4 SEISMIC RESTRAINT ARCHITECTURAL DETAIL  
 SR A5 SEISMIC RESTRAINT ARCHITECTURAL DETAIL  
 SR A6 SEISMIC RESTRAINT ARCHITECTURAL DETAIL  
 SR A7 SEISMIC RESTRAINT ARCHITECTURAL DETAIL  
 SR A8 SEISMIC RESTRAINT ARCHITECTURAL DETAIL  
 SR A9 SEISMIC RESTRAINT ARCHITECTURAL DETAIL  
 SR A10 SEISMIC RESTRAINT ARCHITECTURAL DETAIL  
 SR A11 SEISMIC RESTRAINT ARCHITECTURAL DETAIL  
 SR A12 SEISMIC RESTRAINT ARCHITECTURAL DETAIL  
 SR G1 SEISMIC RESTRAINT GENERAL DETAIL  
 SR M1 SEISMIC RESTRAINT MECHANICAL DETAIL  
 SR M2 SEISMIC RESTRAINT MECHANICAL DETAIL  
 SR M3 SEISMIC RESTRAINT MECHANICAL DETAIL  
 SR M4 SEISMIC RESTRAINT MECHANICAL DETAIL  
 SR M5 SEISMIC RESTRAINT MECHANICAL DETAIL  
 SR E1 SEISMIC RESTRAINT ELECTRICAL DETAIL  
 SR E2 SEISMIC RESTRAINT ELECTRICAL DETAIL  
 SR E3 SEISMIC RESTRAINT ELECTRICAL DETAIL  
 SR P1 SEISMIC RESTRAINT PLUMBING DETAIL

**PLUMBING PLANS**

P0.01 PLUMBING SCHEDULES  
 P0.02 SITE PLAN: PLUMBING  
 P1.01 UNDERGROUND PLUMBING-1st FLOOR: PART A  
 P1.01.02 UNDERGROUND PLUMBING-1st FLOOR: PART B  
 P1.01 PLUMBING-1st FLOOR: PART A  
 P1.02 PLUMBING-1st FLOOR: PART B  
 P1.03 PLUMBING-2nd FLOOR: PART A  
 P1.04 PLUMBING-2nd FLOOR: PART B  
 P1.05 PLUMBING-ROOF: PART A  
 P1.06 PLUMBING-ROOF: PART B  
 P2.01 MEDICAL GAS-1st FLOOR: PART A  
 P2.02 MEDICAL GAS-1st FLOOR: PART B  
 P2.03 MEDICAL GAS-2nd FLOOR: PART A  
 P2.04 MEDICAL GAS-2nd FLOOR: PART B  
 P3.01 LARGE SCALE PLUMBING: MECHANICAL ROOM  
 P3.02 LARGE SCALE PLUMBING: KITCHEN  
 P4.01 PLUMBING RISERS  
 P5.01 PLUMBING DETAILS  
 P5.02 PLUMBING DETAILS





# MASTER DRAWING INDEX:

## C-0 COVER SHEET

- C1.01 GENERAL NOTES/GENERAL ANALYSIS/LEGENDS
- C1.02 U.L. ASSEMBLES
- C1.03 U.L. ASSEMBLES

## MECHANICAL PLANS

- FS1.1 KITCHEN EQUIPMENT
- FS1.2 KITCHEN LINING
- FS1.3 KITCHEN ELECTRICAL
- FS1.4 KITCHEN VENTILATION

## ELECTRICAL PLANS

- EO.01 ELECTRICAL INDEX & SCHEDULES
- EO.02 ELECTRICAL LEGENDS
- EO.03 ELECTRICAL EQUIPMENT CONNECTION SCHEDULES
- EO.04 ELECTRICAL EQUIPMENT SCHEDULES
- EL.01 ELECTRICAL-SITE PLAN
- EL.01 LIGHTING-1st FLOOR: PART A
- EL.02 LIGHTING-1st FLOOR: PART B
- EL.03 LIGHTING-2nd FLOOR: PART A
- EL.04 LIGHTING-2nd FLOOR: PART B
- ES.01 POWER-1st FLOOR: PART A
- ES.02 POWER-1st FLOOR: PART B
- ES.03 POWER-2nd FLOOR: PART A
- ES.04 POWER-2nd FLOOR: PART B
- ES.01 SYSTEMS-1st FLOOR: PART A
- ES.02 SYSTEMS-1st FLOOR: PART B
- ES.03 SYSTEMS-2nd FLOOR: PART A
- ES.04 SYSTEMS-2nd FLOOR: PART B
- ES.01 ELECTRICAL-ROOF: PART A
- ES.02 ELECTRICAL-ROOF: PART B
- ES.01 LARGE SCALE ELECTRICAL
- ES.02 LARGE SCALE ELECTRICAL
- ES.01 ELECTRICAL POWER DISTRIBUTION: RISER
- ES.02 ELECTRICAL POWER DISTRIBUTION: NORMAL ONE LINE DIAGRAM
- ES.03 ELECTRICAL POWER DISTRIBUTION: ESSENTIAL ONE LINE DIAGRAM
- ES.04 ELECTRICAL POWER DISTRIBUTION: ESSENTIAL ONE LINE DIAGRAM
- ES.01 TELECOMMUNICATION DETAILS
- ES.02 ELECTRICAL DETAILS
- ES.01 ELECTRICAL PANELBOARD SCHEDULES: NORMAL SYSTEM
- ES.02 ELECTRICAL PANELBOARD SCHEDULES: ESSENTIAL SYSTEM
- ES.03 ELECTRICAL PANELBOARD SCHEDULES: ESSENTIAL SYSTEM

## ARCHITECTURAL PLANS

- AD.01 ARCHITECTURAL-SITE PLAN
- AD.01 SITE DETAILS
- LS1.01 LIFE SAFETY PLAN - 1ST FLOOR, OVERALL
- LS1.01A LIFE SAFETY PLAN - 1ST FLOOR, PART A
- LS1.01B LIFE SAFETY PLAN - 1ST FLOOR, PART B
- LS1.02 LIFE SAFETY PLAN - 2ND FLOOR, OVERALL
- LS1.02A LIFE SAFETY PLAN - 2ND FLOOR, PART A
- LS1.02B LIFE SAFETY PLAN - 2ND FLOOR, PART B
- A1.00A OVERALL FLOOR PLAN - 1ST FLOOR
- A1.00B OVERALL FLOOR PLAN - 2ND FLOOR
- A1.01A DIMENSION PLAN - 1ST FLOOR, PART A
- A1.01B DIMENSION PLAN - 1ST FLOOR, PART B
- A1.02A DIMENSION PLAN - 2ND FLOOR, PART A
- A1.02B DIMENSION PLAN - 2ND FLOOR, PART B
- A1.51A NOTED PLAN - 1ST FLOOR, PART A
- A1.51B NOTED PLAN - 1ST FLOOR, PART B
- A1.52A NOTED PLAN - 2ND FLOOR, PART A
- A1.52B NOTED PLAN - 2ND FLOOR, PART B
- A1.81A EQUIPMENT PLAN - 1ST FLOOR, PART A
- A1.81B EQUIPMENT PLAN - 1ST FLOOR, PART B
- A1.82A EQUIPMENT PLAN - 2ND FLOOR, PART A
- A1.82B EQUIPMENT PLAN - 2ND FLOOR, PART B
- A2.01 ENLARGED PLANS & ELEVATIONS
- A2.02 ENLARGED PLANS & ELEVATIONS
- A2.21 ENLARGED PLANS: TOILETS
- A2.22 ENLARGED PLANS & ELEVATIONS
- A2.61 VERTICAL TRANSPORT: STAIRWELLS
- A2.71 VERTICAL TRANSPORT: ELEVATORS
- A3.01A CEILING PLAN - 1ST FLOOR, PART A
- A3.01B CEILING PLAN - 1ST FLOOR, PART B
- A3.02A CEILING PLAN - 2ND FLOOR, PART A
- A3.02B CEILING PLAN - 2ND FLOOR, PART B
- A3.51 CEILING DETAILS
- A4.01 ROOF PLAN
- A4.51 ROOF DETAILS
- A5.01 EXTERIOR ELEVATIONS
- A5.02 EXTERIOR ELEVATIONS - ENLARGED
- A5.03 EXTERIOR ELEVATIONS - ENLARGED
- A6.00 BUILDING SECTION
- A6.20 INTERIOR WALL TYPES/DETAILS
- A6.21 WALL SECTIONS
- A6.22 WALL SECTIONS
- A6.23 WALL SECTIONS
- A6.24 WALL SECTIONS
- A6.25 WALL SECTIONS
- A6.26 WALL SECTIONS
- A6.51 GENERAL DETAILS
- A6.52 GENERAL DETAILS
- A6.53 GENERAL DETAILS
- A6.54 GENERAL DETAILS
- A6.55 GENERAL DETAILS
- A6.56 GENERAL DETAILS
- A7.01 DOOR SCHEDULE
- A7.02 WINDOW ELEVATIONS
- A7.51 DOOR DETAILS
- A7.52 WINDOW DETAILS
- AB.01 CASEWORK ELEVATIONS
- AB.02 CASEWORK ELEVATIONS
- AB.03 CASEWORK ELEVATIONS
- AB.51 CASEWORK DETAILS
- AB.52 CASEWORK DETAILS
- AB.53 CASEWORK DETAILS

## STRUCTURAL PLANS

- SS.01 STRUCTURAL NOTES
- SS.1 FOUNDATION PLAN: PART A
- SS.2 FOUNDATION PLAN: PART B
- SS.1 FOUNDATION SECTIONS & DETAILS
- SS.2 FOUNDATION SECTIONS & DETAILS
- SS.1 SECOND FLOOR FRAMING PLAN: PART A
- SS.2 SECOND FLOOR FRAMING PLAN: PART B
- SS.3 ROOF FRAMING PLAN: PART A
- SS.4 ROOF FRAMING PLAN: PART B
- SS.1 FRAMING SECTIONS & DETAILS
- SS.2 FRAMING SECTIONS & DETAILS
- SS.3 FRAMING SECTIONS & DETAILS
- SS.4 EXTERIOR STUD WALL ELEVATIONS & DETAILS
- SS.1 BRICKY COLUMN SCHEDULE & DETAILS
- SS.2 FRAME ELEVATIONS
- SS.3 FRAME ELEVATIONS

## BEAM/COLUMN CONNECTIONS

## MECHANICAL PLANS

- M0.01 HVAC SCHEDULES
- M0.02 HVAC SCHEDULES
- M0.03 HVAC SCHEDULES
- M0.04 HVAC VENTILATION TABLE
- M0.05 HVAC VENTILATION TABLE
- M0.06 HVAC VENTILATION TABLE
- M0.07 HVAC VENTILATION TABLE
- M2.01 HVAC NEW CONSTRUCTION-1st FLOOR: PART A
- M2.02 HVAC PIPING-1st FLOOR: PART A
- M2.03 HVAC NEW CONSTRUCTION-1st FLOOR: PART B
- M2.04 HVAC PIPING-1st FLOOR: PART B
- M2.05 ROOF PLUMB PART A
- M2.06 ROOF PLUMB PART B
- M2.07 LARGE SCALE MECHANICAL ROOM
- M2.08 LARGE SCALE SECTIONS
- M3.01 HVAC CONTROLS
- M3.02 HVAC CONTROLS
- M4.01 HVAC DETAILS
- M4.02 HVAC DETAILS
- M5.01 HVAC DETAILS
- M5.02 HVAC DETAILS
- M6.01 HVAC NEW CONSTRUCTION-2nd FLOOR: PART A
- M6.02 HVAC PIPING-2nd FLOOR: PART A
- M6.03 HVAC NEW CONSTRUCTION-2nd FLOOR: PART B
- M6.04 HVAC PIPING-2nd FLOOR: PART B

## PLUMBING PLANS

- P0.01 PLUMBING SCHEDULES
- P0.02 SITE PLAN: PLUMBING
- P01.01 UNDERGROUND PLUMBING-1st FLOOR: PART A
- P01.02 UNDERGROUND PLUMBING-1st FLOOR: PART B
- P1.01 PLUMBING-1st FLOOR: PART A
- P1.02 PLUMBING-1st FLOOR: PART B
- P1.03 PLUMBING-2nd FLOOR: PART A
- P1.04 PLUMBING-2nd FLOOR: PART B
- P1.05 PLUMBING-ROOF: PART A
- P1.06 PLUMBING-ROOF: PART B
- P2.01 MEDICAL GAS-1st FLOOR: PART A
- P2.02 MEDICAL GAS-1st FLOOR: PART B
- P2.03 MEDICAL GAS-2nd FLOOR: PART A
- P2.04 MEDICAL GAS-2nd FLOOR: PART B
- P3.01 LARGE SCALE PLUMBING: MECHANICAL ROOM
- P3.02 LARGE SCALE PLUMBING: KITCHEN
- P4.01 PLUMBING RISERS
- P5.01 PLUMBING DETAILS
- P5.02 PLUMBING DETAILS

## SEISMIC RESTRAINT

- SR A1 SEISMIC RESTRAINT ARCHITECTURAL DETAIL
- SR A2 SEISMIC RESTRAINT ARCHITECTURAL DETAIL
- SR A3 SEISMIC RESTRAINT ARCHITECTURAL DETAIL
- SR A4 SEISMIC RESTRAINT ARCHITECTURAL DETAIL
- SR A5 SEISMIC RESTRAINT ARCHITECTURAL DETAIL
- SR A6 SEISMIC RESTRAINT ARCHITECTURAL DETAIL
- SR A7 SEISMIC RESTRAINT ARCHITECTURAL DETAIL
- SR A8 SEISMIC RESTRAINT ARCHITECTURAL DETAIL
- SR A9 SEISMIC RESTRAINT ARCHITECTURAL DETAIL
- SR A10 SEISMIC RESTRAINT ARCHITECTURAL DETAIL
- SR A11 SEISMIC RESTRAINT ARCHITECTURAL DETAIL
- SR A12 SEISMIC RESTRAINT ARCHITECTURAL DETAIL
- SR C1 SEISMIC RESTRAINT GENERAL DETAIL
- SR M1 SEISMIC RESTRAINT MECHANICAL DETAIL
- SR M2 SEISMIC RESTRAINT MECHANICAL DETAIL
- SR M3 SEISMIC RESTRAINT MECHANICAL DETAIL
- SR M4 SEISMIC RESTRAINT MECHANICAL DETAIL
- SR M5 SEISMIC RESTRAINT MECHANICAL DETAIL
- SR E1 SEISMIC RESTRAINT ELECTRICAL DETAIL
- SR E2 SEISMIC RESTRAINT ELECTRICAL DETAIL
- SR E3 SEISMIC RESTRAINT ELECTRICAL DETAIL
- SR P1 SEISMIC RESTRAINT PLUMBING DETAIL

## SEISMIC RESTRAINT

- SR A1 SEISMIC RESTRAINT ARCHITECTURAL DETAIL
- SR A2 SEISMIC RESTRAINT ARCHITECTURAL DETAIL
- SR A3 SEISMIC RESTRAINT ARCHITECTURAL DETAIL
- SR A4 SEISMIC RESTRAINT ARCHITECTURAL DETAIL
- SR A5 SEISMIC RESTRAINT ARCHITECTURAL DETAIL
- SR A6 SEISMIC RESTRAINT ARCHITECTURAL DETAIL
- SR A7 SEISMIC RESTRAINT ARCHITECTURAL DETAIL
- SR A8 SEISMIC RESTRAINT ARCHITECTURAL DETAIL
- SR A9 SEISMIC RESTRAINT ARCHITECTURAL DETAIL
- SR A10 SEISMIC RESTRAINT ARCHITECTURAL DETAIL
- SR A11 SEISMIC RESTRAINT ARCHITECTURAL DETAIL
- SR A12 SEISMIC RESTRAINT ARCHITECTURAL DETAIL
- SR C1 SEISMIC RESTRAINT GENERAL DETAIL
- SR M1 SEISMIC RESTRAINT MECHANICAL DETAIL
- SR M2 SEISMIC RESTRAINT MECHANICAL DETAIL
- SR M3 SEISMIC RESTRAINT MECHANICAL DETAIL
- SR M4 SEISMIC RESTRAINT MECHANICAL DETAIL
- SR M5 SEISMIC RESTRAINT MECHANICAL DETAIL
- SR E1 SEISMIC RESTRAINT ELECTRICAL DETAIL
- SR E2 SEISMIC RESTRAINT ELECTRICAL DETAIL
- SR E3 SEISMIC RESTRAINT ELECTRICAL DETAIL
- SR P1 SEISMIC RESTRAINT PLUMBING DETAIL



# What to remember

- Notes
- Key Words
- Typical Details
- General Notes
- Look into all the disciplines



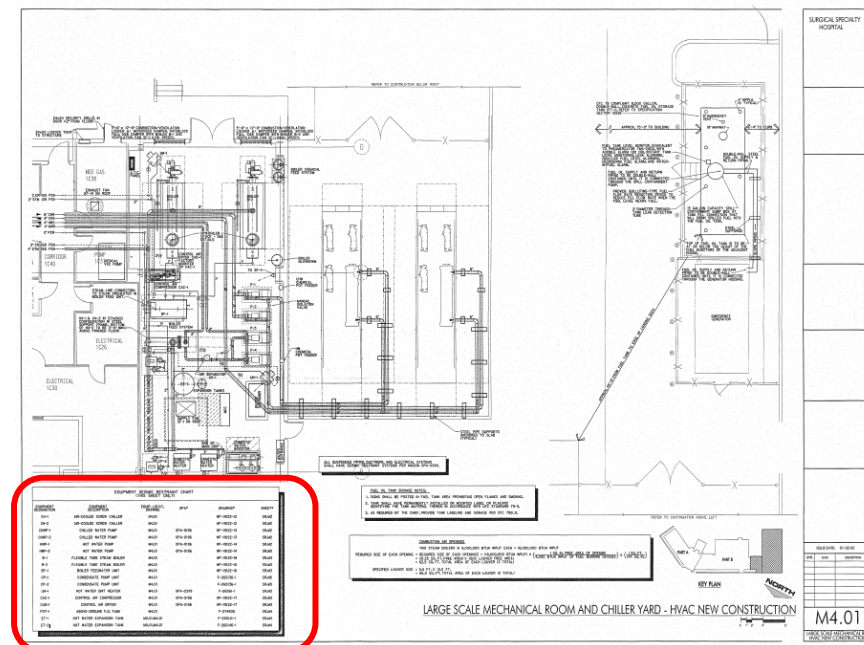
# Example #1



Expansion tank ET-2 is anchored with:

- A. 8 – 3/8” dia. Red Head w/3-inch embedment
- B. 4 – 1/2” dia. Red head w/4-inch embedment
- C. 4 – 5/8” dia. Red Head w/6-inch embedment
- D. 6 – 3/4” dia. Red Head w/4-inch embedment

Look at the Equipment Seismic Chart...



EQUIPMENT SEISMIC RESTRAINT CHART  
(THIS SHEET ONLY)

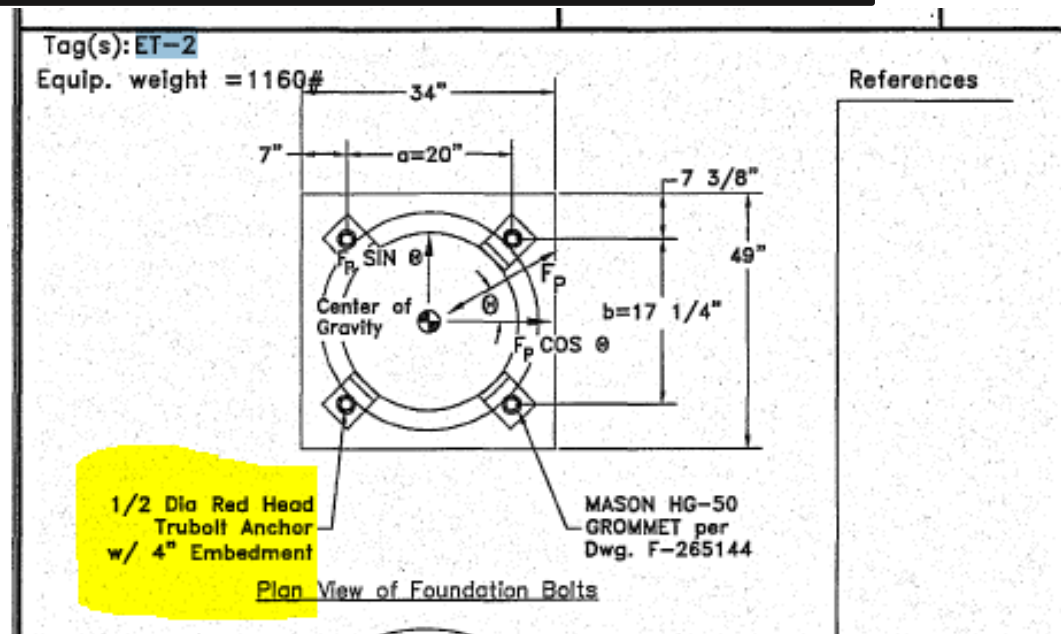
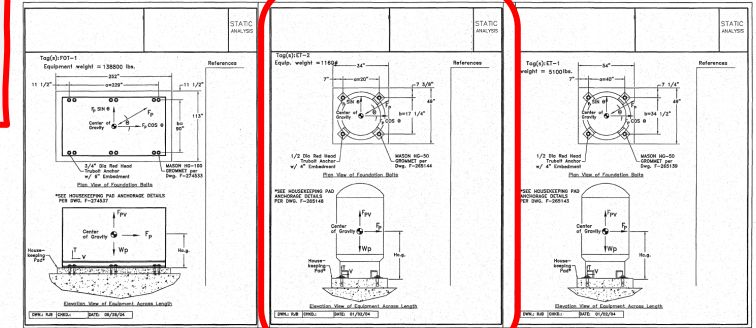
EQUIPMENT DESIGNATION	EQUIPMENT DESCRIPTION	EQUIP. LOCAT. DRAWING	OPA*	DRAWING*	SHEET*
CH-1	AIR-COOLED SCREW CHILLER	M4.01		WF-19122-12	SR.M2
CH-2	AIR-COOLED SCREW CHILLER	M4.01		WF-19122-12	SR.M2
CHWP-1	CHILLED WATER PUMP	M4.01	OPA-0196	WF-19122-13	SR.M2
CHWP-2	CHILLED WATER PUMP	M4.01	OPA-0196	WF-19122-13	SR.M2
HWP-1	HOT WATER PUMP	M4.01	OPA-0196	WF-19122-14	SR.M2
HWP-2	HOT WATER PUMP	M4.01	OPA-0196	WF-19122-14	SR.M2
B-1	FLEXIBLE TUBE STEAM BOILER	M4.01		WF-19122-15	SR.M3
B-2	FLEXIBLE TUBE STEAM BOILER	M4.01		WF-19122-15	SR.M3
BF-1	BOILER FEEDWATER UNIT	M4.01		WF-19122-16	SR.M3
CP-1	CONDENSATE PUMP UNIT	M4.01		F-265136-1	SR.M5
CP-2	CONDENSATE PUMP UNIT	M4.01		F-265136-1	SR.M5
UH-1	HOT WATER UNIT HEATER	M4.01	OPA-0349	F-26561-1	SR.M3
CAC-1	CONTROL AIR COMPRESSOR	M4.01	OPA-0196	WF-19122-17	SR.M3
CAD-1	CONTROL AIR DRYER	M4.01	OPA-0196	WF-19122-17	SR.M3
FOT-1	ABOVE-GROUND F.O. TANK	M4.01		F-274535	SR.M4
ET-1	HOT WATER EXPANSION TANK	M0.01,M4.01		F-265146-1	SR.M4
ET-2	HOT WATER EXPANSION TANK	M0.01,M4.01		F-265146-1	SR.M4



Expansion tank ET-2 is anchored with:

- A. 8 – 3/8" dia. Red Head w/3-inch embedment
- B. 4 – 1/2" dia. Red head w/4-inch embedment ✓
- C. 4 – 5/8" dia. Red Head w/6-inch embedment
- D. 6 – 3/4" dia. Red Head w/4-inch embedment

Then go to the referenced sheet (SR.M4)



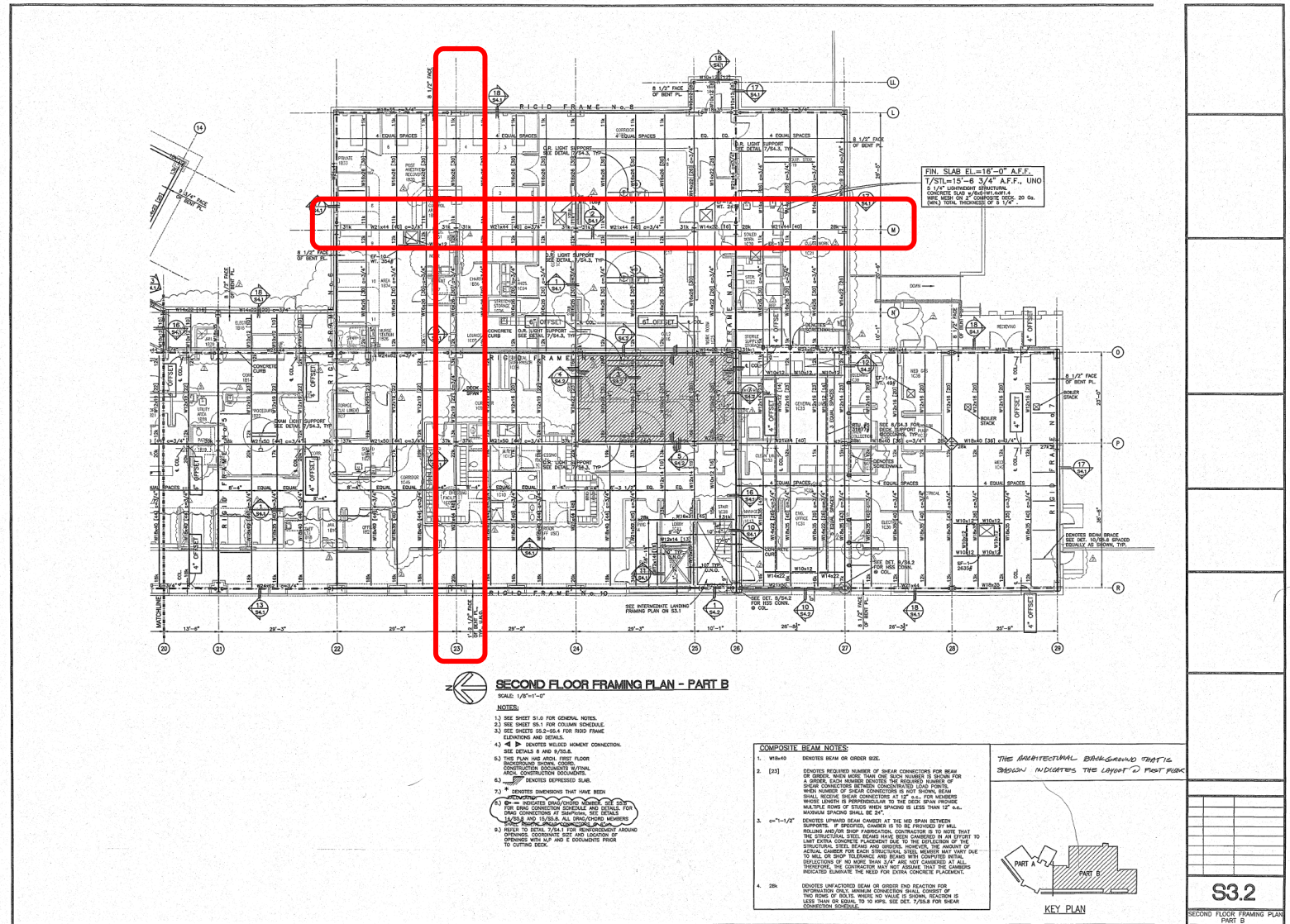
# Example #2





How many bolts are required to attach the beam at the second floor along gridline M to the column at gridline 23?

2<sup>nd</sup> floor framing plan, look to grid line M and 23.

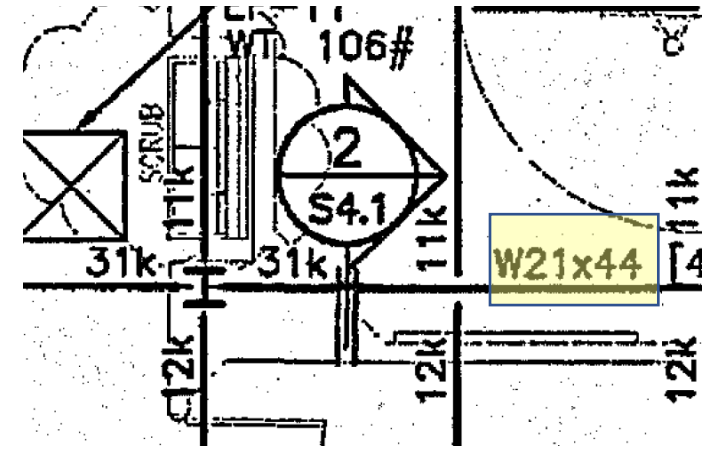


How many bolts are required to attach the beam at the second floor along gridline M to the column at gridline 23?

- A. 5
- B. 6 ✓
- C. 7
- D. 8

The schedule is in Beam/column connection sheet, detail 7/S5.8

And remember the beam size from framing plan (W21)



**BEAM SHEAR CONNECTION SCHEDULE**

BEAM SIZE	SHEAR PLATE THICKNESS	B O L T S		WELD "A"	REMARKS
		NO.	DIA.		
W8	3/8"	2	3/4"	5/16"	
W10	3/8"	2	3/4"	5/16"	
W10x26	3/8"	2	1"	5/16"	
W12,W14	3/8"	3	3/4"	5/16"	
W16	3/8"	4	3/4"	5/16"	
W18	3/8"	5	3/4"	3/8"	
W21	1/2"	6	1"	3/8"	
W24,W27	1/2"	7	1"	3/8"	
W30	1/2"	8	1"	3/8"	
W33x	1/2"	9	1"	3/8"	
W36x	1/2"	10	1"	3/8"	

**7 SHEAR CONNECTION SCHEDULE**



# Example #3



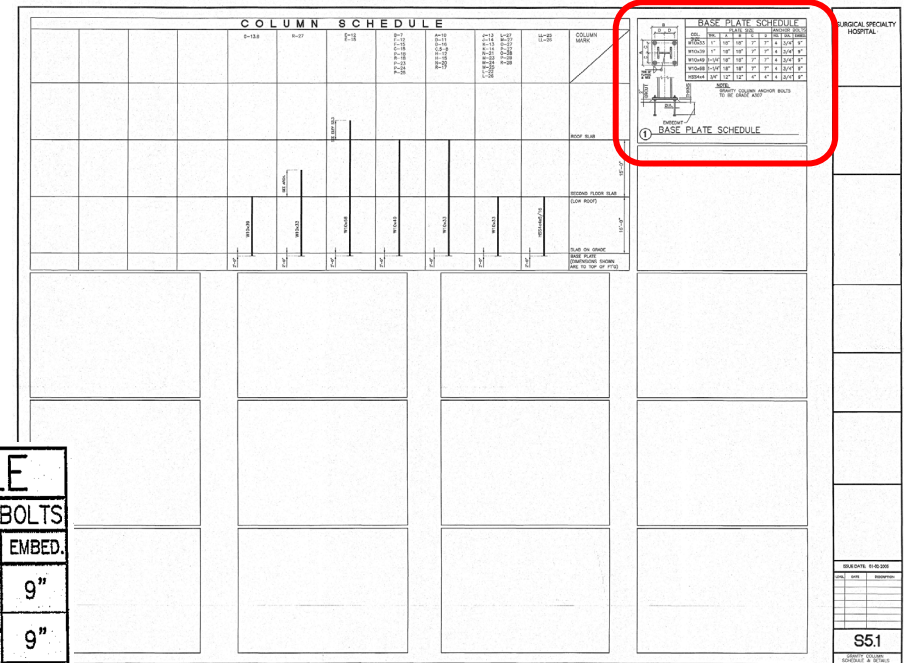




Base plate size and thickness for column at the intersection of grid lines P and 27 is \_\_\_\_\_.

- A. 18" x 18" x 1" ✓
- B. 18" x 18" x 1 1/4"
- C. 20" x 20" x 1"
- D. 20" x 20" x 1 1/2"

In the same sheet, look for the Base Plate Schedule to find the answer for W10x23



COL. SIZE	PLATE SIZE					ANCHOR BOLTS		
	THK.	A	B	C	D	NO.	DIA.	EMBED.
W10x33	1"	18"	18"	7"	7"	4	3/4"	9"
W10x39	1"	18"	18"	7"	7"	4	3/4"	9"
W10x49	1-1/4"	18"	18"	7"	7"	4	3/4"	9"
W10x68	1-1/4"	18"	18"	7"	7"	4	3/4"	9"
HSS4x4	3/4"	12"	12"	4"	4"	4	3/4"	9"

**NOTE:**  
GRAVITY COLUMN ANCHOR BOLTS TO BE GRADE A307

① BASE PLATE SCHEDULE



# Example #4



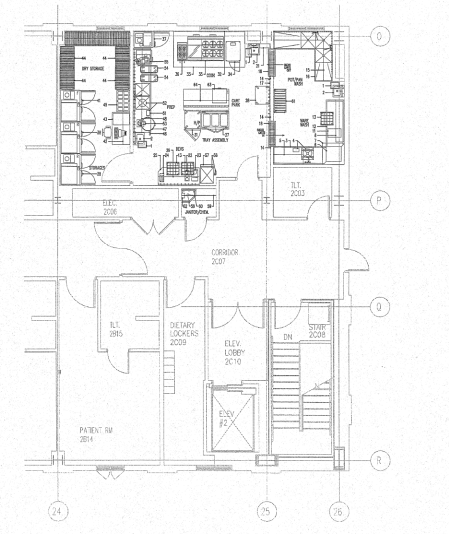


# The kitchen equipment is anchored to what type of concrete?

First, look the Food Service Equipment Schedule, and see references for seismic detail. You will see references from SRA6-10.

SCHEDULE OF EQUIPMENT			
ITEM	DESCRIPTION	SEISMIC DETAILS (DETAIL #/SHEET)	OPA APPROVAL
1	TRASH RECEPTACLE	--	BY OWNER
2	HAND SINK	--	BY PLUMBING CONTRACTOR
3	SOLID TOP DISHWASHER	F-278165/SRA6, F-278167/SRA6	W/ PRE-RINSE
4	DISPOSER W/ CONTROL	--	--
5	RACK SHELF	F-278162/SRA10	--
6	DISH MACHINE	F-278155/SRA6, F-278158/SRA6	--
7	CONDENSATE HOOD	F-277278/SRA6, F-277279/SRA6, F-277280/SRA6, F-277282/SRA6	R-0349
8	RACK SHELF	F-278165/SRA10	--
9	SPARE NUMBER	--	--
10	SPARE NUMBER	--	--
11	BOOSTER HEATER	F-278165/SRA6, 278169/SRA6	--
12	CLEAN DISHWASHER	F-278165/SRA6, F-278160/SRA6	--
13	MOBILE CUP/GLASS RACK DOLLY	--	--
14	S/S CORNER GUARD	--	--
15	SMART WALL ASSEMBLY	F-277780/SRA6	--
16	3-COMPARTMENT SINK	F-278164/SRA6, F-278166/SRA6, F-278167/SRA6	--
17	SMART WALL ASSEMBLY	F-277780/SRA6	--
18	FLOOR TROUGH W/ GRATE	--	--
19	SPARE NUMBER	--	--
20	SPARE NUMBER	--	--
21	PIPE SUSPENSION SYSTEM	F-277292/SRA7	--
22	COFFEE BREWER	--	BY VENDOR
23	ICED TEA BREWER	--	BY VENDOR
24	TOASTER	--	--
25	BEVERAGE COUNTER	F-278165/SRA6, F-278161/SRA6	--
26	SMART WALL ASSEMBLY	F-277780/SRA6	--
27	MOBILE 3-MELL HOT FOOD TABLE	--	--
28	MOBILE TRAY TRANSPORT CART	--	--
29	SPARE NUMBER	--	--
30	SPARE NUMBER	--	--
31	MOBILE HOT BOX / PROOFER	--	--
32	S/S WALL FLASHING	--	--
33	EXHAUST VENTILATOR	F-277284/SRA6, F-277285/SRA6, F-277286/SRA6, F-277287/SRA6	R-0349
34	STEAMER	F-277288/SRA7	--
35	COMBINATION RANGE/GRIDDLE	F-277300/SRA7	--
36	FRESH/FILTER UNIT	F-277295/SRA7	--
37	REACH-IN FREEZER	F-277305/SRA7	--
38	REACH-IN REFRIGERATOR	F-277306/SRA7	--
39	SPARE NUMBER	--	--
40	SPARE NUMBER	--	--
41	REACH-IN FREEZER	F-277306/SRA7	--
42	SMART WALL ASSEMBLY	F-277780/SRA6	--
43	OFFICE FURNITURE	--	BY OWNER
44	STORAGE SHELVING	F-277783/SRA6	--
45	DUNNAGE SHELF	--	--
46	TABLE MOUNTED CAN OPENER	--	--
47	TRASH RECEPTACLE	--	BY OWNER
48	SMART WALL ASSEMBLY	F-277780/SRA6	--
49	SPARE NUMBER	--	--
50	SPARE NUMBER	--	--
51	PREPARATION TABLE W/ SINKS	F-278174/SRA6, F-178175/SRA9	--
52	DISPOSER W/ CONTROL	--	--
53	FOOD PROCESSOR	--	--
54	MOBILE INGREDIENT BINS	--	--
55	SLICER	--	--
56	ICE MAKER W/ FILTER	F-277301/SRA7	--
57	ICE BIN	F-277302/SRA7	--
58	MOP SINK	--	BY PLUMBING CONTRACTOR
59	WALL SHELF	F-278178/SRA9	--
60	MOP RACK	--	BY PLUMBING CONTRACTOR
61	MOBILE POT/PAN RACK	--	--
62	HOSE BIBS	--	BY PLUMBING CONTRACTOR
63	PREP TABLE	F-278170/SRA6, F-278172/SRA10	--
64	SMART WALL ASSEMBLY	F-277780/SRA6	--

GENERAL NOTES		SCHEDULE OF EQUIPMENT	
1	TRASH RECEPTACLE	--	BY OWNER
2	HAND SINK	--	BY PLUMBING CONTRACTOR
3	SOLID TOP DISHWASHER	F-278165/SRA6, F-278167/SRA6	W/ PRE-RINSE
4	DISPOSER W/ CONTROL	--	--
5	RACK SHELF	F-278162/SRA10	--
6	DISH MACHINE	F-278155/SRA6, F-278158/SRA6	--
7	CONDENSATE HOOD	F-277278/SRA6, F-277279/SRA6, F-277280/SRA6, F-277282/SRA6	R-0349
8	RACK SHELF	F-278165/SRA10	--
9	SPARE NUMBER	--	--
10	SPARE NUMBER	--	--
11	BOOSTER HEATER	F-278165/SRA6, 278169/SRA6	--
12	CLEAN DISHWASHER	F-278165/SRA6, F-278160/SRA6	--
13	MOBILE CUP/GLASS RACK DOLLY	--	--
14	S/S CORNER GUARD	--	--
15	SMART WALL ASSEMBLY	F-277780/SRA6	--
16	3-COMPARTMENT SINK	F-278164/SRA6, F-278166/SRA6, F-278167/SRA6	--
17	SMART WALL ASSEMBLY	F-277780/SRA6	--
18	FLOOR TROUGH W/ GRATE	--	--
19	SPARE NUMBER	--	--
20	SPARE NUMBER	--	--
21	PIPE SUSPENSION SYSTEM	F-277292/SRA7	--
22	COFFEE BREWER	--	BY VENDOR
23	ICED TEA BREWER	--	BY VENDOR
24	TOASTER	--	--
25	BEVERAGE COUNTER	F-278165/SRA6, F-278161/SRA6	--
26	SMART WALL ASSEMBLY	F-277780/SRA6	--
27	MOBILE 3-MELL HOT FOOD TABLE	--	--
28	MOBILE TRAY TRANSPORT CART	--	--
29	SPARE NUMBER	--	--
30	SPARE NUMBER	--	--
31	MOBILE HOT BOX / PROOFER	--	--
32	S/S WALL FLASHING	--	--
33	EXHAUST VENTILATOR	F-277284/SRA6, F-277285/SRA6, F-277286/SRA6, F-277287/SRA6	R-0349
34	STEAMER	F-277288/SRA7	--
35	COMBINATION RANGE/GRIDDLE	F-277300/SRA7	--
36	FRESH/FILTER UNIT	F-277295/SRA7	--
37	REACH-IN FREEZER	F-277305/SRA7	--
38	REACH-IN REFRIGERATOR	F-277306/SRA7	--
39	SPARE NUMBER	--	--
40	SPARE NUMBER	--	--
41	REACH-IN FREEZER	F-277306/SRA7	--
42	SMART WALL ASSEMBLY	F-277780/SRA6	--
43	OFFICE FURNITURE	--	BY OWNER
44	STORAGE SHELVING	F-277783/SRA6	--
45	DUNNAGE SHELF	--	--
46	TABLE MOUNTED CAN OPENER	--	--
47	TRASH RECEPTACLE	--	BY OWNER
48	SMART WALL ASSEMBLY	F-277780/SRA6	--
49	SPARE NUMBER	--	--
50	SPARE NUMBER	--	--
51	PREPARATION TABLE W/ SINKS	F-278174/SRA6, F-178175/SRA9	--
52	DISPOSER W/ CONTROL	--	--
53	FOOD PROCESSOR	--	--
54	MOBILE INGREDIENT BINS	--	--
55	SLICER	--	--
56	ICE MAKER W/ FILTER	F-277301/SRA7	--
57	ICE BIN	F-277302/SRA7	--
58	MOP SINK	--	BY PLUMBING CONTRACTOR
59	WALL SHELF	F-278178/SRA9	--
60	MOP RACK	--	BY PLUMBING CONTRACTOR
61	MOBILE POT/PAN RACK	--	--
62	HOSE BIBS	--	BY PLUMBING CONTRACTOR
63	PREP TABLE	F-278170/SRA6, F-278172/SRA10	--
64	SMART WALL ASSEMBLY	F-277780/SRA6	--



NOTE: THIS DRAWING INDICATES THE GENERAL EXTENT OF WORK AND IS NOT INTENDED TO INDICATE OR DESCRIBE ALL WORK REQUIRED FOR THE FULL PERFORMANCE AND COMPLETION OF THE REQUIREMENTS OF THE CONTRACT DOCUMENTS.

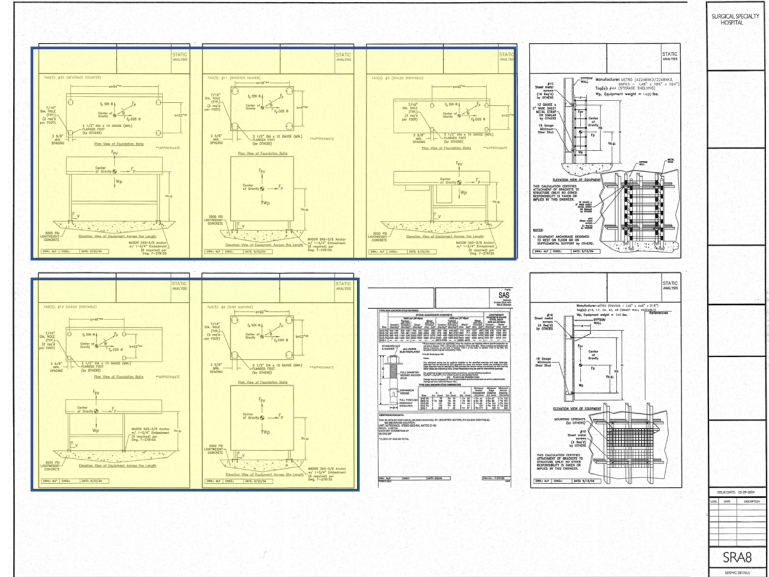
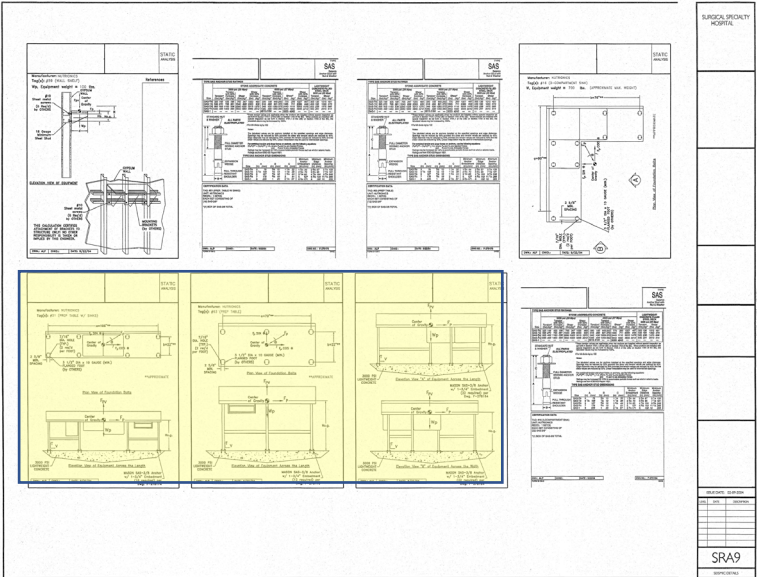
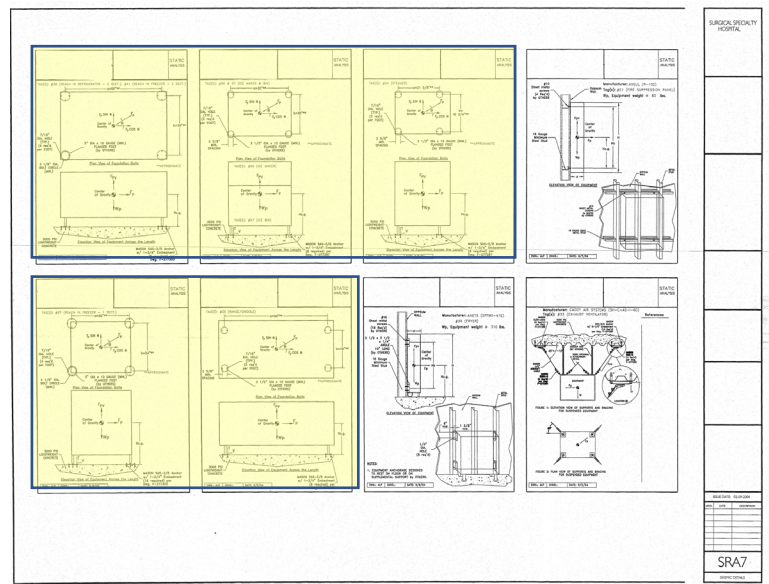
SCALE: 1/4" = 1'-0"

KITCHEN EQUIPMENT LAYOUT

The kitchen equipment is anchored to what type of concrete?

Let's look at them from SRA6-10 and see the one anchored.

The equipment anchored are on SRA7-9



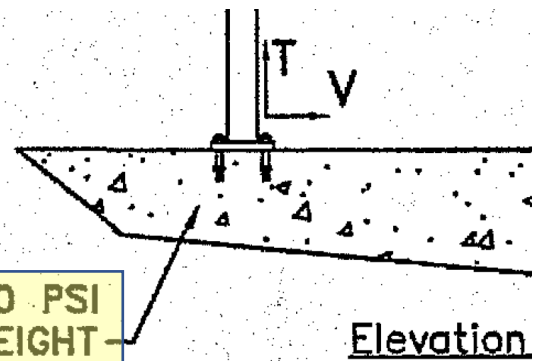


The kitchen equipment is anchored to what type of concrete?

- A. 3,000 psi
- B. 3,000 psi, lightweight ✓
- C. 4,000 psi
- D. 4,000 psi, lightweight

Let's look at them from SRA6-10 and see the one anchored.

The equipment anchored are on SRA7-9



3000 PSI  
LIGHTWEIGHT  
CONCRETE

Elevation

# Example #5



# Hot water recirculation pumps HWRP-1 and HWRP-2 are:

First of all, look into the Plumbing sheet for the pump seismic restraint chart

EQUIPMENT SEISMIC RESTRAINT CHART (THIS SHEET ONLY)					
EQUIPMENT DESIGNATION	EQUIPMENT DESCRIPTION	EQUIP. LOCAT. DRAWING	OPA#	DRAWING#	SHEET#
WH-1	WATER HEATER	P3.01		WF-19122-18	SR.PI
WH-2	WATER HEATER	P3.01		WF-19122-18	SR.PI
HWRP-1	HOT WATER RECIR PUMP	P3.01	OPA-0349	WF-19122-28	SR.PI
HWRP-2	HOT WATER RECIR PUMP	P3.01	OPA-0349	WF-19122-28	SR.PI
BP-1	BOOSTER PUMP	P3.01		WF-19122-19	SR.PI
WSF-1	WATER SOFTNER	P3.01		WF-19122-20	SR.PI
MVP-1	MEDICAL VACUUM PUMP	P2.02		F-265170-1	SR.PI
AIR	AIR MANIFOLD	P2.02		F-265170-1	SR.PI
NITROUS	NITROUS MANIFOLD	P2.02		F-265170-1	SR.PI
NITROGEN	NITROGEN MANIFOLD	P2.02		F-265170-1	SR.PI
OXYGEN	OXYGEN MANIFOLD	P2.02		F-265170-1	SR.PI

**EQUIPMENT SEISMIC RESTRAINT CHART (THIS SHEET ONLY)**

EQUIPMENT DESIGNATION	EQUIPMENT DESCRIPTION	EQUIP. LOCAT. DRAWING	OPA#	DRAWING#	SHEET#
WH-1	WATER HEATER	P3.01		WF-19122-18	SR.PI
WH-2	WATER HEATER	P3.01		WF-19122-18	SR.PI
HWRP-1	HOT WATER RECIR PUMP	P3.01	OPA-0349	WF-19122-28	SR.PI
HWRP-2	HOT WATER RECIR PUMP	P3.01	OPA-0349	WF-19122-28	SR.PI
BP-1	BOOSTER PUMP	P3.01		WF-19122-19	SR.PI
WSF-1	WATER SOFTNER	P3.01		WF-19122-20	SR.PI
MVP-1	MEDICAL VACUUM PUMP	P2.02		F-265170-1	SR.PI
AIR	AIR MANIFOLD	P2.02		F-265170-1	SR.PI
NITROUS	NITROUS MANIFOLD	P2.02		F-265170-1	SR.PI
NITROGEN	NITROGEN MANIFOLD	P2.02		F-265170-1	SR.PI
OXYGEN	OXYGEN MANIFOLD	P2.02		F-265170-1	SR.PI

**LARGE SCALE MECH ROOM - UNDERGROUND NEW CONSTRUCTION**

**LARGE SCALE MECH ROOM - PLUMBING NEW CONSTRUCTION**

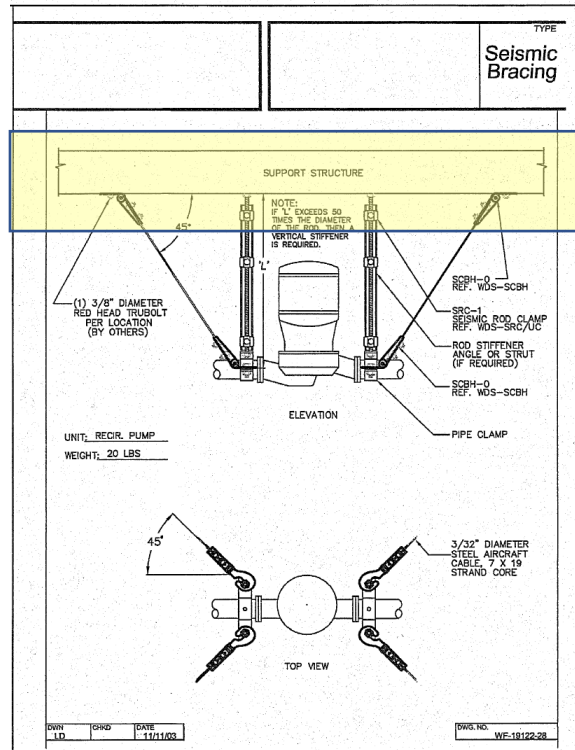
**P3.01**

**OSHPD**  
Office of Statewide Health Planning and Development

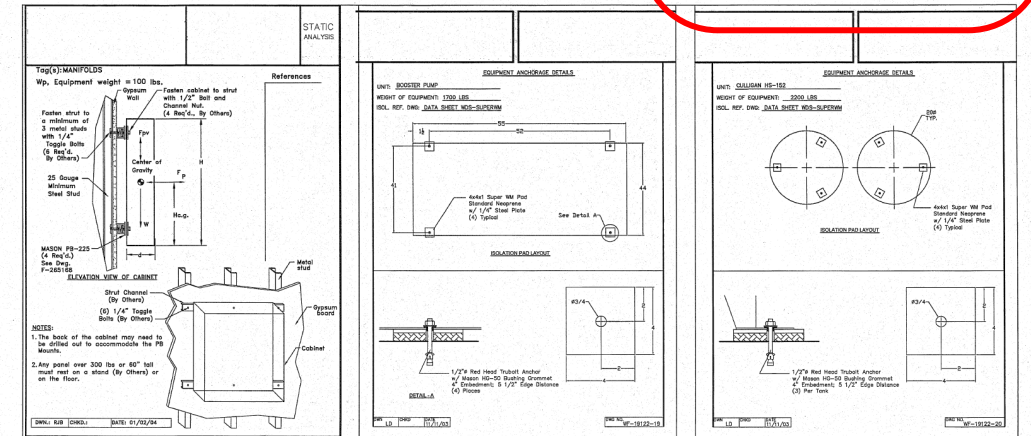
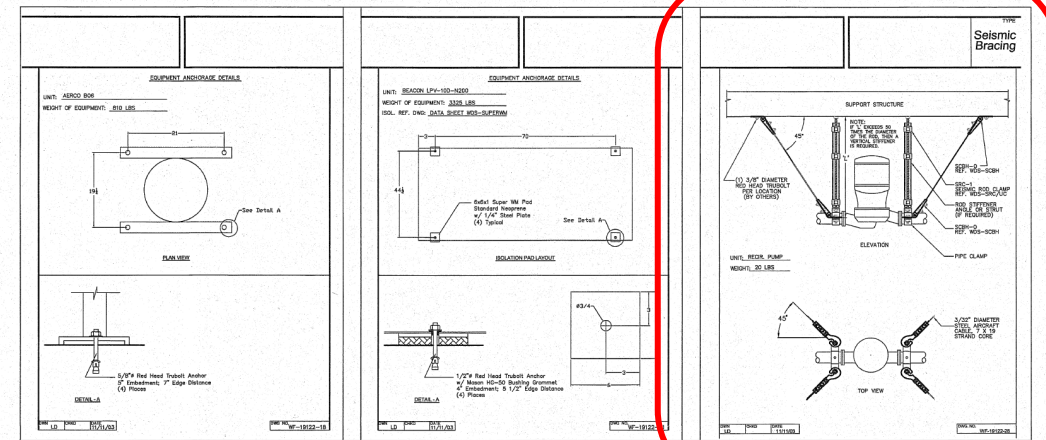


Hot water recirculation pumps HWRP-1 and HWRP-2 are:

- A. Mounted on housekeeping slabs
- B. Mounted on pedestals
- C. **Suspended from the deck** ✓
- D. Wall mounted



**Go to SR.P1, and look for WF-19122-28**



LEVEL	DATE	DESCRIPTION



# Homework

## Homework #1

What reinforcing steel is required for the footing at the intersection of grid lines O and 23?

- A. 4 - #4 Bottom
- B. 6 - #6 Bottom
- C. 10 - #6 Bottom
- D. 9 - #6 Top & Bottom
- E. 13 - #7 Top & Bottom

## Homework #2

The typical header for a 10-foot clear opening in the exterior wall would be:

- A. 2- 6"x18ga. studs with 3- 6"x14ga. Tracks
- B. 1- 6"x18ga. stud with 2- 6"x18ga. Tracks
- C. 3- 6"x14ga. studs with 3- 6"x 14ga. Tracks
- D. 2- 6"x18ga. studs with 2- 6"x18ga. tracks



See you at Part 2

Send your Homework Responses to:

[OSHDP.fddisu@oshpd.ca.gov](mailto:OSHDP.fddisu@oshpd.ca.gov)



Q&A

