

Part 2



Homework

Homework #1

What reinforcing steel is required for the footing at the intersection of grid lines O and 23?

- A. 4 - #4 Bottom
- B. 6 - #6 Bottom
- C. 10 - #6 Bottom
- D. 9 - #6 Top & Bottom
- E. 13 - #7 Top & Bottom

Homework #2

The typical header for a 10-foot clear opening in the exterior wall would be:

- A. 2- 6"x18ga. studs with 3- 6"x14ga. Tracks
- B. 1- 6"x18ga. stud with 2- 6"x18ga. Tracks
- C. 3- 6"x14ga. studs with 3- 6"x 14ga. Tracks
- D. 2- 6"x18ga. studs with 2- 6"x18ga. tracks



Resolution

Homework #1

What reinforcing steel is required for the footing at the intersection of grid lines O and 23?

- A. 4 - #4 Bottom
- B. 6 - #6 Bottom
- C. 10 - #6 Bottom
- D. 9 - #6 Top & Bottom
- E. 13 - #7 Top & Bottom

Homework #2

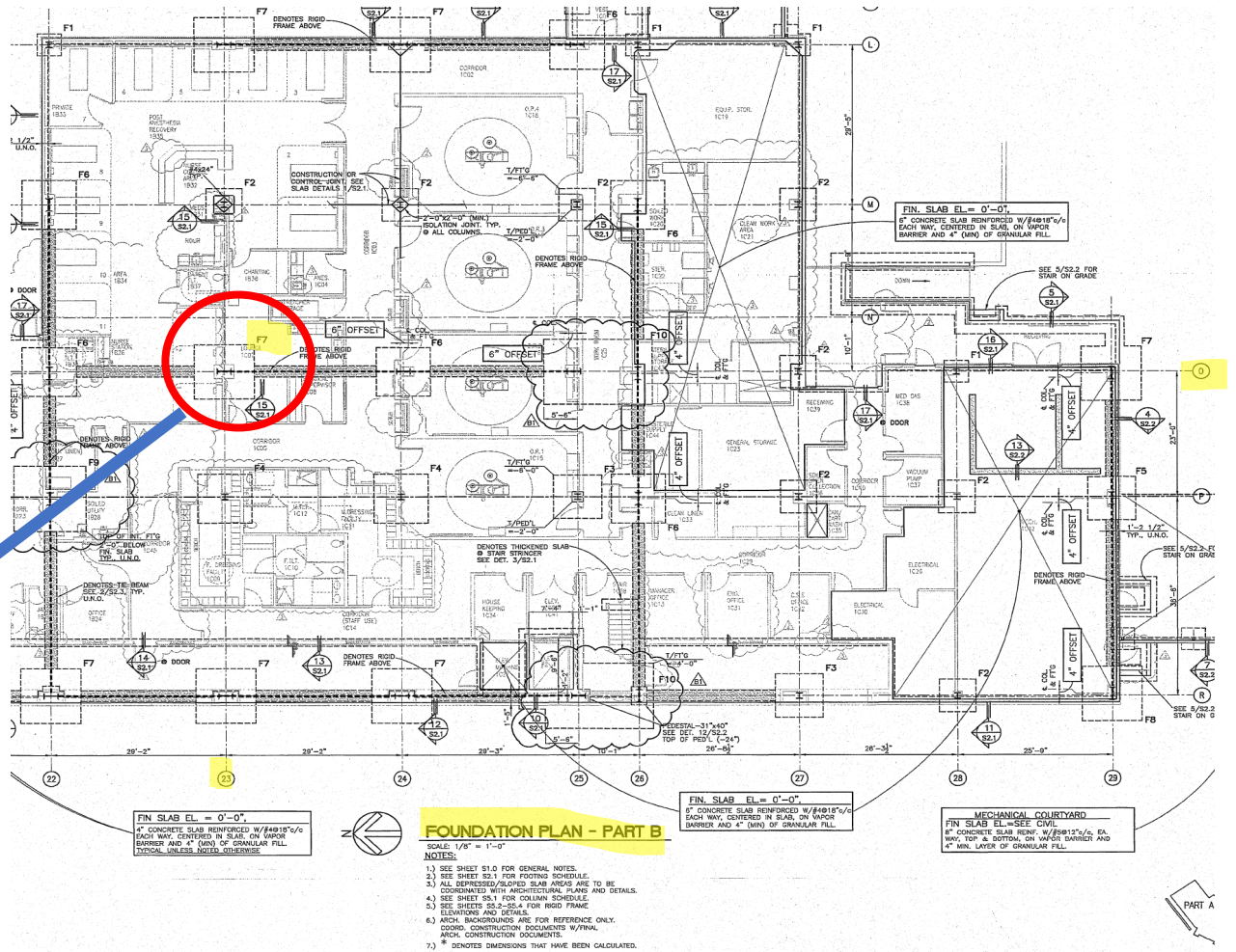
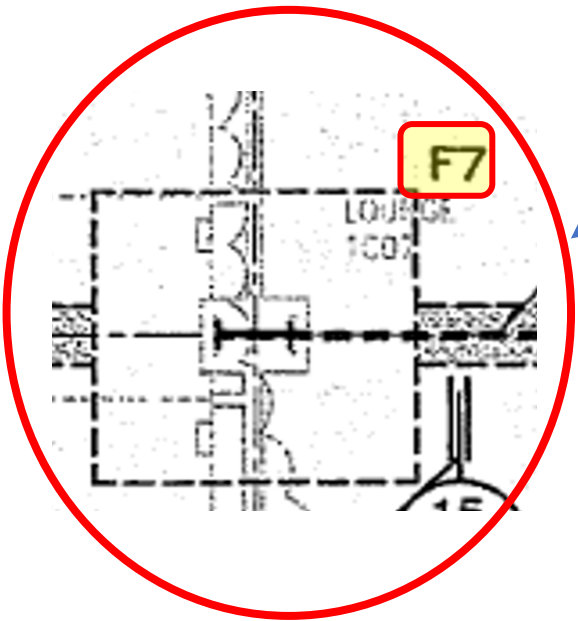
The typical header for a 10-foot clear opening in the exterior wall would be:

- A. 2- 6"x18ga. studs with 3- 6"x14ga. Tracks
- B. 1- 6"x18ga. stud with 2- 6"x18ga. Tracks
- C. 3- 6"x14ga. studs with 3- 6"x 14ga. Tracks
- D. 2- 6"x18ga. studs with 2- 6"x18ga. tracks



What reinforcing steel is required for the footing at the intersection of grid lines O and 23?

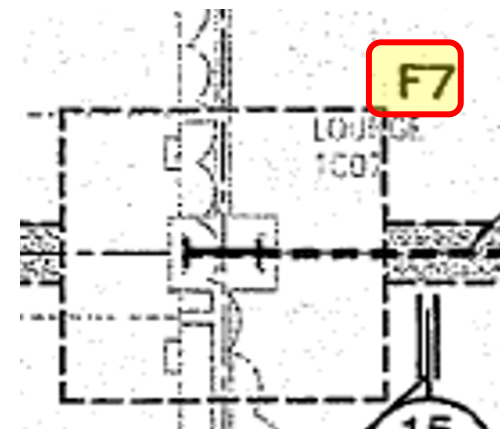
At the foundation plan, look column O-23 and read the footing mark (F7).



What reinforcing steel is required for the footing at the intersection of grid lines O and 23?

- A. 4 - #4 Bottom
- B. 6 - #6 Bottom
- C. 10 - #6 Bottom
- D. 9 - #6 Top & Bottom
- E. 13 - #7 Top & Bottom ✓

Then go to Foundation details sheet and look for the footing schedule



FOOTING SCHEDULE						
FOOTINGS			PEDESTALS			NOTES
MARK	SIZE	REINF. EA. WAY	SIZE	REINF.	TIES	
F1	4'-0"x4'-0"x1'-0"	4-#4 BOT				
F2	6'-0"x6'-0"x1'-6"	6-#6 BOT	22"x22"	12-#5	#3@12"	G13.9, M25
F3	8'-0"x8'-0"x2'-0"	9-#6 BOT	22"x22"	12-#5	#3@12"	G15, P25
F4	9'-0"x9'-0"x2'-0"	10-#6 BOT				
F5	8'-0"x8'-0"x4'-0"	9-#6 TOP&BOT				
F6	9'-0"x9'-0"x6'-0"	10-#7 TOP&BOT				
F7	10'-0"x10'-0"x7'-0"	13-#7 TOP&BOT				
F8	10'-0"x10'-0"x8'-0"	13-#8 TOP&BOT				
F9	12'-0"x12'-0"x8'-0"	13-#8 TOP&BOT				
F10	18'-0"x12'-0"x6'-0"	#8@12" TOP&BOT		SEE 12/S2.2		R25, R26

NOTE: SEE DET. S2.3 FOR TOP REINF. PLACEMENT IN RIGID FRAME FOOTINGS.

PED'L TIE PATTERN

④ FOOTING/PEDESTAL SCHEDULE

The typical header for a 10-foot clear opening in the exterior wall would be:

- A. 2- 6"x18ga. studs with 3- 6"x14ga. Tracks ✓
- B. 1- 6"x18ga. stud with 2- 6"x18ga. Tracks
- C. 3- 6"x14ga. studs with 3- 6"x 14ga. Tracks
- D. 2- 6"x18ga. studs with 2- 6"x18ga. tracks

Go to S4.4 where you can find the Header Schedule

HEADER SCHEDULE			
ROUGH OPENING	MEMBERS	BUILT-UP SECTION	NOTES
0'-0" TO 6'-4"	2-6", 18 Ga STUDS W/2-6", 18 Ga TRACKS		
6'-5" TO 8'-4"	2-6", 18 Ga STUDS W/2-6", 18 Ga TRACKS		
8'-5" TO 13'-0"	2-6", 18 Ga STUDS W/3-6", 14 Ga TRACKS		

NOTE:
 1.) ALL MEMBERS TO HAVE 33 KSI YIELD STRENGTH.
 2.) TRACK SECTIONS TO HAVE 1 1/4" LEG MIN.
 3.) STUD SECTIONS HAVE 1 5/8" FLANGES, TYP. U.N.O.
 4.) FASTEN EACH TRACK W/2-#1 SCREWS @ 16"/c FOR BUILT-UP SECTION.

2 HEADER SCHEDULE

1 TYPICAL EXTERIOR WALL ELEVATION

2 HEADER SCHEDULE

3 SILL SCHEDULE

4 JAMB SCHEDULE

5 DETAIL—FIRST FLOOR

6 DETAIL—SECOND FLOOR

7 DETAIL—ROOF

8 DETAIL—JAMB TO JAMB

9 DETAIL—SILL TO JAMB

10 DETAIL—JAMB @ FIRST FLOOR

11 DETAIL—JAMB @ SECOND FLOOR

12 DETAIL—JAMB @ ROOF

HEADER SCHEDULE			
ROUGH OPENING	MEMBERS	BUILT-UP SECTION	NOTES
0'-0" TO 6'-4"	2-6", 18 Ga STUDS W/2-6", 18 Ga TRACKS		
6'-5" TO 8'-4"	2-6", 18 Ga STUDS W/2-6", 18 Ga TRACKS		
8'-5" TO 13'-0"	2-6", 18 Ga STUDS W/3-6", 14 Ga TRACKS		

2 HEADER SCHEDULE

3 SILL SCHEDULE

4 JAMB SCHEDULE

OSHPD
S4.4
STANDARD EXTERIOR WALL ELEVATIONS & DETAILS

Q&A

