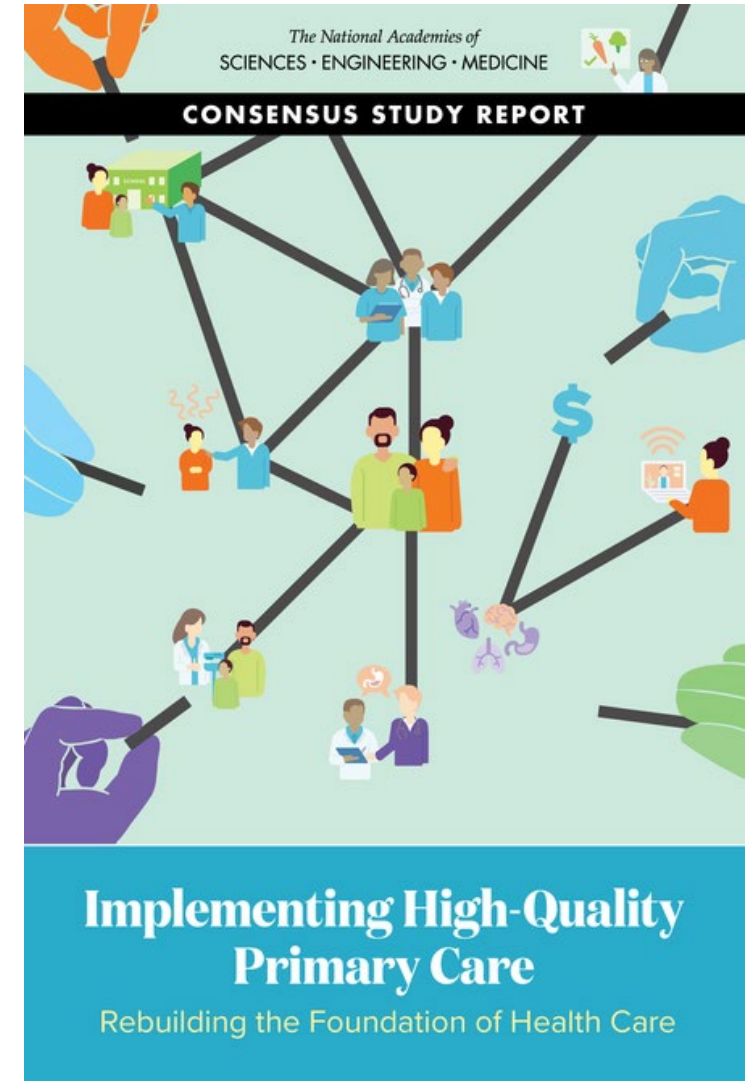


# Agenda Item VII: HCAI Health of Primary Care in California Snapshot

Andy Potter, PhD, Research Scientist Supervisor II, HCAI;  
Margareta Brandt, MPH, Assistant Deputy Director, HCAI;  
Alyssa Borders, PhD, Research Scientist III, HCAI

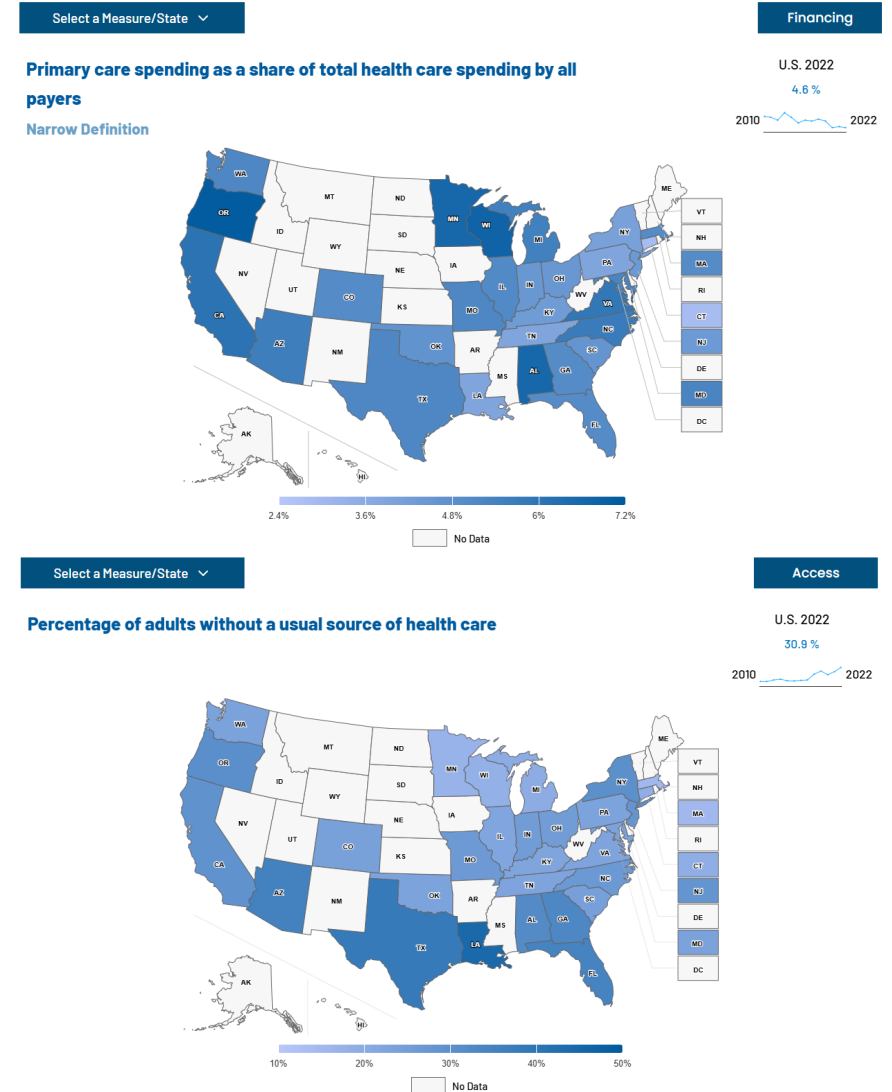
# Context

- The NASEM 2021 *Implementing High-Quality Primary Care* report proposed a US scorecard on the health of primary care to track implementation and progress towards high-quality primary care
- National level and state level scorecards have been developed since then
- California Health Care Foundation's (CHCF) Primary Care Investment Coordinating Group of California (PICG) recommended a primary care scorecard for California in 2022



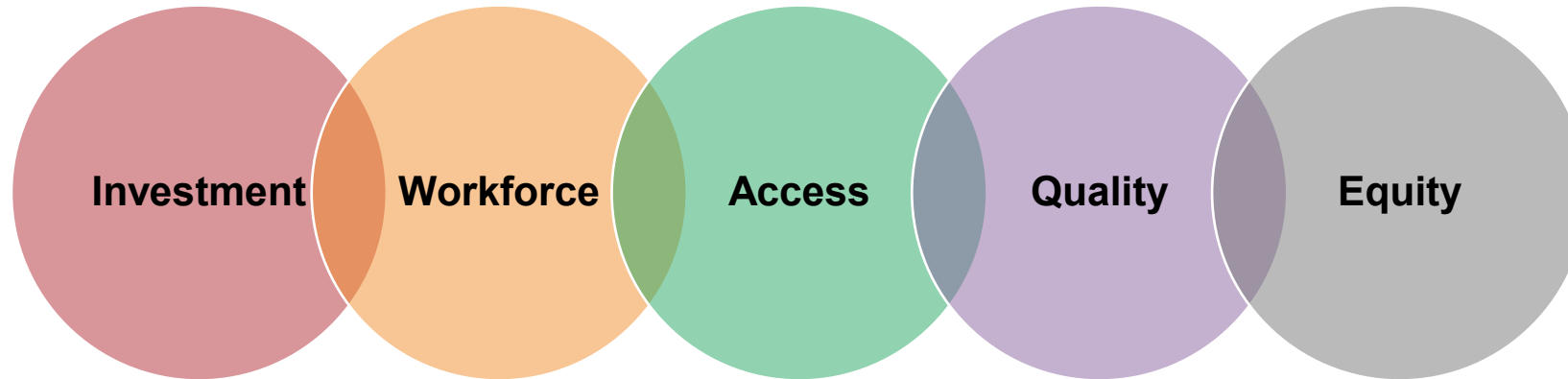
# Primary Care Snapshot Purpose

- Create a **shared understanding** of the health of California's primary care sector, both statewide and for geographic regions within the state
- **Track progress** toward equitable, high-quality, sustainable primary care for all Californians
- Monitor performance on **key elements of the health of primary care**, including spending and outcomes
- **Identify gaps and challenges** to inform action on spending, workforce, and access



# Primary Care Snapshot Approach and Audiences

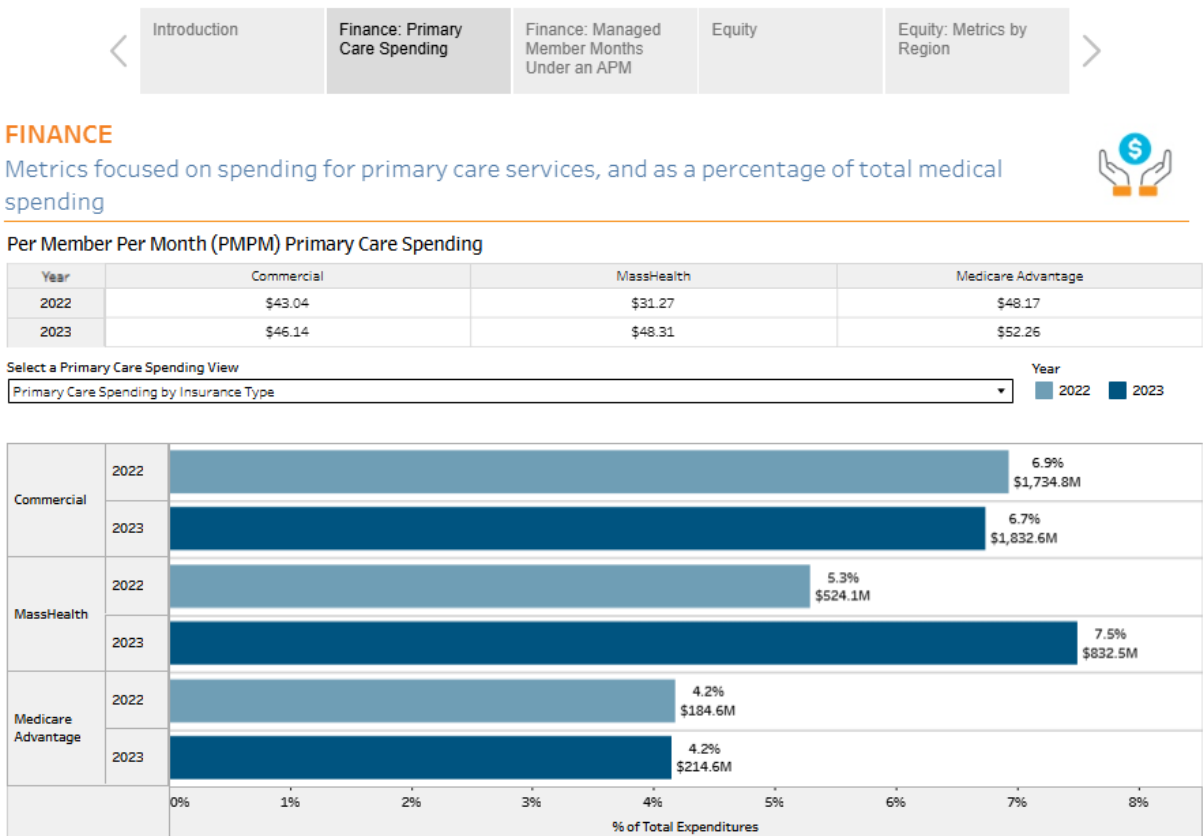
- **Compile data** from across HCAI and other sources to create a comprehensive picture of primary care in California, both statewide and for geographic regions within the state
- Focus on **five key domains**



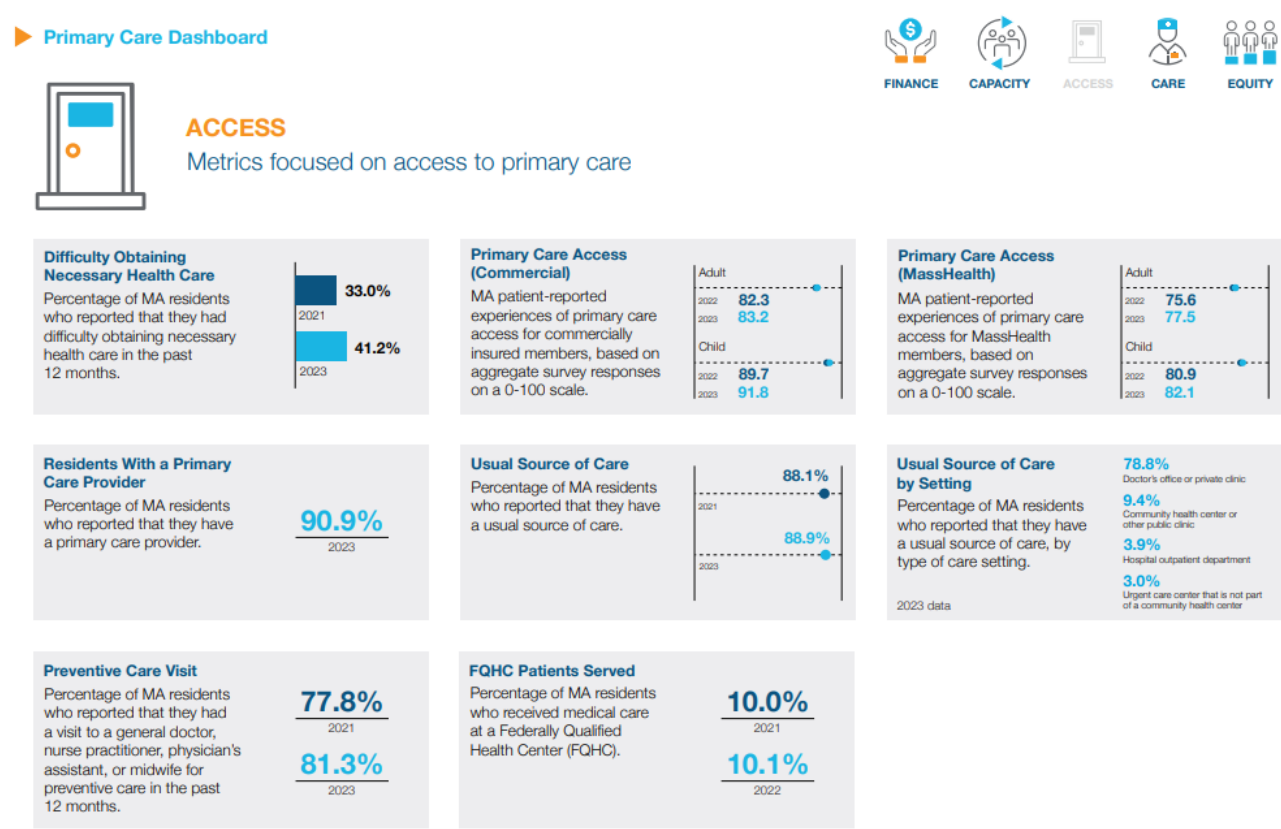
- Adopt a **phased approach** that begins with a static report on the key domains and adds indicators and interactive features over time
- The primary audiences are **engaged stakeholders** (purchasers, payers, providers, state government, policymakers, consumer advocates, and researchers)

# Example: Massachusetts Primary Care Dashboard

## Interactive dashboard



## Static dashboard



# Primary Care Snapshot Deliverables

**Early 2026**

HCAI Brief on the Health of Primary Care in California

- **Introduction to Primary Care Snapshot:** Timeline, approach to the annual static and interactive Primary Care Snapshots, stakeholder engagement
- **Content Overview:** Current state of primary care in California, domains for future Primary Care Snapshots

**2026**

Health of Primary Care in California Snapshot (static version)

- **First Static Report:** Baseline performance on key indicators for each domain to be included in interactive Primary Care Snapshot
- **Update on Interactive Primary Care Snapshot:** Timeline and updates for development and release

**2027**

Health of Primary Care in California Snapshot (interactive)

- **First Interactive Primary Care Snapshot:** Data dashboard featuring key indicators in each domain
- **Accompanying Static Report:** Easily downloadable digest of performance on key indicators

**2028 and beyond**

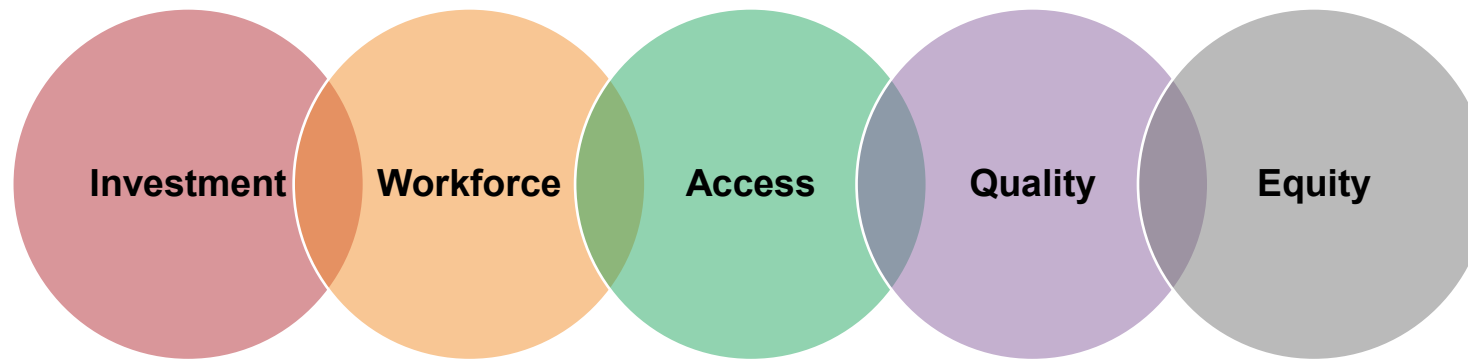
Annual updated Interactive and Static Primary Care Snapshots

# Primary Care Snapshot Indicator Development

## Proposed criteria for state and national indicators for the Primary Care Snapshot

- ✓ Is the indicator of interest to, and actionable for, California stakeholders?
- ✓ Is the indicator supported by existing, accessible California data sources or national data sources with California-specific data that can be tracked over time?
- ✓ Does the indicator directly measure strength of the primary care sector?
- ✓ Does the indicator track change in the primary care sector, aligned with the five key domains?

*Example indicator:* primary care investment by health plan and statewide



# Stakeholder Engagement

## Guiding Principles

- Engage a diverse set of stakeholders and seek their input to create a relevant slate of primary care indicators
- Present stakeholders with a focused goal for the Primary Care Snapshot, based on current capabilities and an aligned vision for primary care
- Convene a **new workgroup bi-monthly** for technical input, discussion among stakeholders, and Primary Care Snapshot development through at least year-end 2026
- Report on Primary Care Snapshot progress to **existing HCAI stakeholder groups** for feedback, quarterly or as needed
- Conduct **individual meetings with stakeholders and experts**, as needed, to elicit candid feedback on indicator domains, preferences, and tradeoffs

## Stakeholder Groups



# HCAI Primary Care Snapshot Project Team

- The Primary Care Snapshot is a collaborative HCAI project leveraging expertise in data, workforce, spending, equity, and quality
- Contractor support from Freedman HealthCare and Diane Rittenhouse, Mathematica
- Collaborating with CHCF on communications to support dissemination of the Snapshot

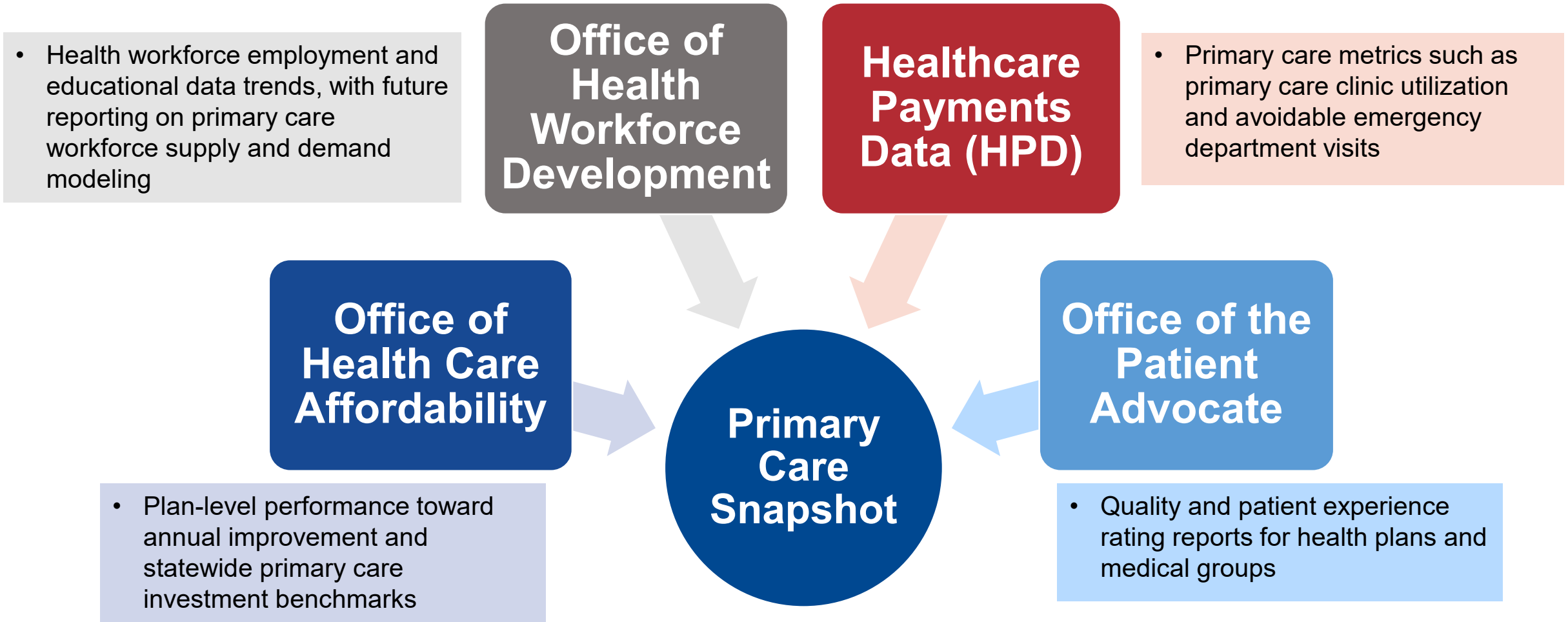
Office of Health  
Information (OHI)  
(Healthcare  
Payments Data)

Office of Health  
Workforce  
Development  
(OHWD)

Office of Health  
Care Affordability  
(OHCA)

Office of the  
Patient Advocate  
(OPA)

# HCAI Primary Care Reporting



# HPD Primary Care Utilization Report

- Analyses and visualization currently under development
- Primary care definition developed by OHCA with input from its Investment and Payment Workgroup
  - Based on procedure codes, place of service, and provider taxonomy
  - Definition specifications: [THCE-Data-Submission-Guide-v2.0.pdf](#)

# HPD Primary Care Measures

- Yearly Utilization
  - Primary care visits per 1,000 members
  - Members without a primary care visit
  - Average distance traveled to a primary care visit
  - Stratifications: Age Group, Payer Type, Sex, Urban/Rural
- Member-Level Continuity of Care
  - Bice-Boxerman Continuity of Care (CoC) index<sup>1</sup>
    - Weighs frequency and consistency of primary care visits to a single provider vs multiple different providers
    - Basis of the Core Quality Measure Collaborative (CQMC) Continuity measure<sup>2</sup>
    - CQMC measure used in Covered CA and DHCS CoC reporting
    - Continuous Care = index score > 0.7
  - Report percentage of members with Continuous Care
  - Rate of Continuous Care for members that switched payers, plans or product types
  - Stratifications: Age Group, Payer Type, Sex, Urban/Rural

# Next Steps for the Primary Care Snapshot

- Release of HCAI Brief on the Health of Primary Care in California and Primary Care Snapshot webpage
- Release the HPD Primary Care Utilization Report in spring 2026
- Continue to develop indicators for late-2026 Primary Care Snapshot with input from the public Snapshot Workgroup, sibling state departments, and existing HCAI stakeholder groups