



**OFFICE OF STATEWIDE HEALTH PLANNING AND DEVELOPMENT
FACILITIES DEVELOPMENT DIVISION**

**APPLICATION FOR OSHPD SPECIAL SEISMIC
CERTIFICATION PREAPPROVAL (OSP)**

OFFICE USE ONLY

APPLICATION #: OSP-0245

OSHPD Special Seismic Certification Preapproval (OSP)

Type: New Renewal

Manufacturer Information

Manufacturer: Smartrise Engineering

Manufacturer's Technical Representative: Gilbert Zogbi

Mailing Address: 1235 N Union Bower Rd., Irving, TX 75061

Telephone: (469) 678-8000

Email: gilbert@smartrise.us

Product Information

Product Name: Elevator Equipment

Product Type: Elevator Controllers

Product Model Number: EVOLVED, C4, SRH, SRA, SRD ELEVATOR CONTROLLERS

General Description: Wall and floor mounted universal hydraulic, AC traction, and DC traction elevator controllers.

Mounting Description: Rigid, Wall or Floor Mounted

Tested Seismic Enhancements: Seismic enhancements made to the test units and/or modifications required to address anomalies during the tests shall be incorporated into the production units.

Applicant Information

Applicant Company Name: Manwill Engineering LLC

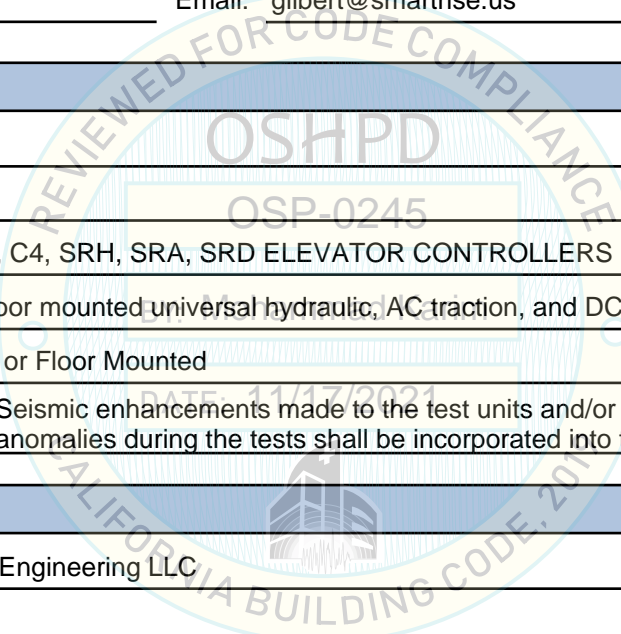
Contact Person: Derek Manwill

Mailing Address: PO Box 1194, Bend, OR 97709

Telephone: (541) 241-2102

Email: derek@manwillSE.com

Title: President





**OFFICE OF STATEWIDE HEALTH PLANNING AND DEVELOPMENT
FACILITIES DEVELOPMENT DIVISION**

California Licensed Structural Engineer Responsible for the Engineering and Test Report(s)

Company Name: MANWILL ENGINEERING LLC
Name: Derek Manwill California License Number: S6266
Mailing Address: PO Box 1194, Bend, OR 97709
Telephone: (541) 241-2102 Email: derek@manwillse.com

Certification Method

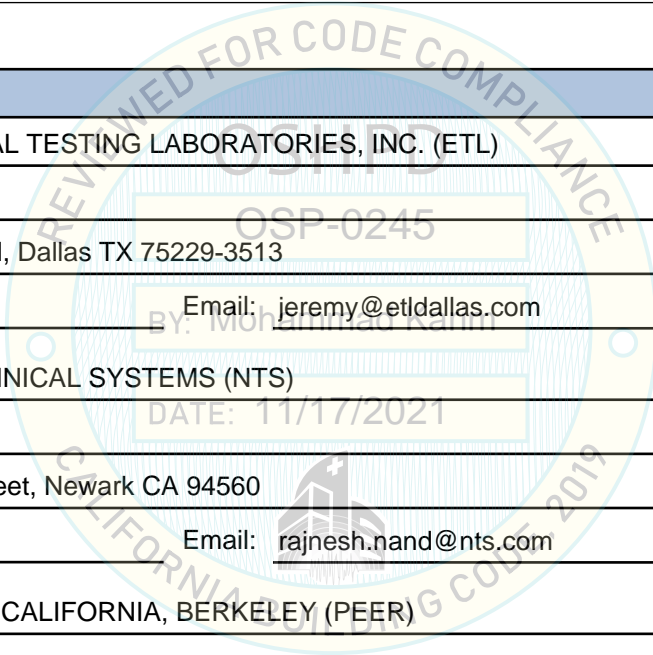
GR-63-Core ICC-ES AC156 IEEE 344 IEEE 693 NEBS 3
 Other (Please Specify): _____

Testing Laboratory

Company Name: ENVIRONMENTAL TESTING LABORATORIES, INC. (ETL)
Contact Person: Jeremy Lange
Mailing Address: 11034 Indian Trail, Dallas TX 75229-3513
Telephone: (972) 247-9657 Email: jeremy@etldallas.com

Company Name: NATIONAL TECHNICAL SYSTEMS (NTS)
Contact Person: Rajnesh Nand
Mailing Address: 38995 Cherry Street, Newark CA 94560
Telephone: (510) 578-3500 Email: rajnesh.nand@nts.com

Company Name: UNIVERSITY OF CALIFORNIA, BERKELEY (PEER)
Contact Person: Amarnath Kasalanati
Mailing Address: 325 Davis Hall, Berkeley CA 94720-1729
Telephone: (510) 642-3437 Email: amarnath1@berkeley.edu





**OFFICE OF STATEWIDE HEALTH PLANNING AND DEVELOPMENT
FACILITIES DEVELOPMENT DIVISION**

Seismic Parameters

Design Basis of Equipment or Components (F_p/W_p) = 1.50 (SDS = 2.00, z/h = 1), 1.17 (SDS = 2.60, z/h = 0)

SDS (Design spectral response acceleration at short period, g) = 2.00 (z/h=1), 2.60 (z/h=0)

a_p (Amplification factor) = 2.5

R_p (Response modification factor) = 6.0

Ω_0 (System overstrength factor) = 2.0

I_p (Importance factor) = 1.5

z/h (Height ratio factor) = 1 and 0

Natural frequencies (Hz) = See Attachment

Overall dimensions and weight = See Attachment

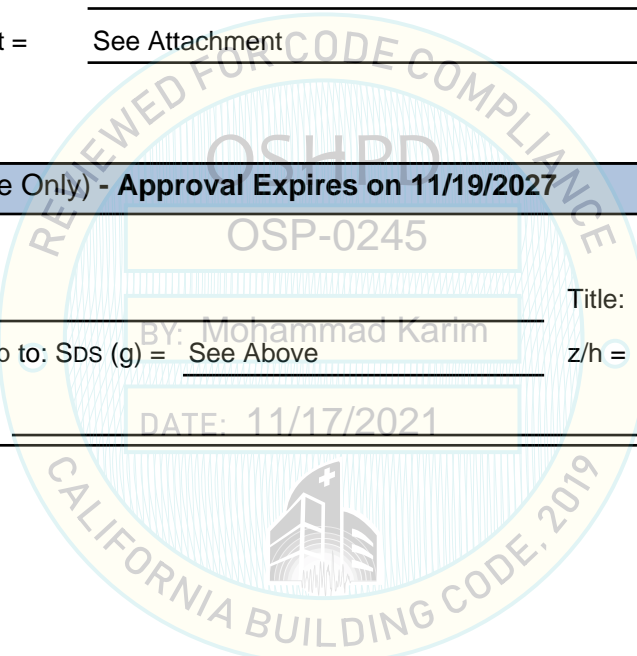
OSHPD Approval (For Office Use Only) - Approval Expires on 11/19/2027

Date: 11/17/2021

Name: Mohammad Karim Title: Supervisor, Health Facilities

Special Seismic Certification Valid Up to: SDS (g) = See Above z/h = See Above

Condition of Approval (if applicable): DATE: 11/17/2021



ATTACHMENT 1: CERTIFIED COMPONENTS

SPECIAL SEISMIC CERTIFICATION

TABLE 1 - WALL MOUNTED

DOCUMENT NO.: 16123CR1.1

MANUFACTURER: SMARTRISE ENGINEERING						
PRODUCT FAMILY: EVOLVED, C4, SRH, SRA, SRD ELEVATOR CONTROLLERS						
MODEL NUMBER	DIMENSIONS (in)			MAX. WT. (lb)	DESCRIPTION / NOTES	BASIS
	DEPTH	WIDTH	HEIGHT			
Evolved/SRH - Smartrise Universal Hydraulic Controller						
Evolved/SRH-4015	10	24	30	170	22A, 480V	EXTRAP
Evolved/SRH-4020	10	24	30	170	32.9A, 480V	EXTRAP
Evolved/SRH-4025	10	24	30	170	35A, 480V	EXTRAP
Evolved/SRH-4030	10	24	30	170	51A, 480V	EXTRAP
Evolved/SRH-4040	10	24	30	170	64A, 480V	EXTRAP
Evolved/SRH-4060	10	24	30	170	80A, 480V	EXTRAP
Evolved/SRH-4075	10	24	30	170	105A, 480V	EXTRAP
Evolved/SRH-40100	10	24	30	170	147A, 480V	EXTRAP
Evolved/SRH-40125	10	24	30	170	156A, 480V	EXTRAP
Evolved/SRH-2015	10	24	30	170	55A, 240V	EXTRAP
Evolved/SRH-2020	10	24	30	170	68A, 240V, CS	UUT 1
Evolved/SRH-2025	10	24	30	170	80A, 240V	INTERP
Evolved/SRH-2030	10	24	30	170	105A, 240V	INTERP
Evolved/SRH-2040	10	24	30	170	130A, 240V, CS	UUT 2
Evolved/SRH-2050	10	24	30	170	156A, 240V	INTERP
Evolved/SRH-2075	10	24	30	170	252A, 240V	INTERP
Evolved/SRH-4015	14	30	39	232	22A, 480V	INTERP ^[2]
Evolved/SRH-4020	14	30	39	232	32.9A, 480V	INTERP
Evolved/SRH-4025	14	30	39	232	35A, 480V	INTERP
Evolved/SRH-4030	14	30	39	232	51A, 480V	INTERP
Evolved/SRH-4040	14	30	39	232	64A, 480V	INTERP
Evolved/SRH-4060	14	30	39	232	80A, 480V	INTERP
Evolved/SRH-4075	14	30	39	232	105A, 480V	INTERP
Evolved/SRH-40100	14	30	39	232	147A, 480V	INTERP
Evolved/SRH-40125	14	30	39	232	156A, 480V	INTERP
Evolved/SRH-2015	14	30	39	232	55A, 240V	INTERP
Evolved/SRH-2020	14	30	39	232	68A, 240V	INTERP
Evolved/SRH-2025	14	30	39	232	80A, 240V	INTERP
Evolved/SRH-2030	14	30	39	232	105A, 240V	INTERP
Evolved/SRH-2040	14	30	39	232	130A, 240V	INTERP
Evolved/SRH-2050	14	30	39	232	156A, 240V	INTERP
C4/SRA - Smartrise Universal AC Traction Controller						
C4/SRA-4010	14	30	39	232	19A, 480V	INTERP
C4/SRA-4015	14	30	39	232	24A, 480V	INTERP
C4/SRA-4020	14	30	39	232	UUT=171lb, 31A, 480V, CS	UUT 5
C4/SRA-4030	14	30	39	232	48A, 480V	INTERP
C4/SRA-4040	14	30	39	232	60A, 480V	INTERP
C4/SRA-4060	14	30	39	232	UUT=216lb, 84A, 480V, CS	UUT 6
C4/SRA-2010	14	30	39	232	UUT=220lb, 36A, 240V, CS	UUT 3
C4/SRA-2015	14	30	39	232	48A, 240V	INTERP
C4/SRA-2020	14	30	39	232	60A, 240V	INTERP
C4/SRA-2025	14	30	39	232	87A, 240V	INTERP
NOTES:	Table continues on the next page. Additional notes, information, and seismic parameters are shown at the end of the table.					

ATTACHMENT 1: CERTIFIED COMPONENTS

SPECIAL SEISMIC CERTIFICATION

TABLE 1 - WALL MOUNTED (continued)

DOCUMENT NO.: 16123CR1.1

MANUFACTURER: SMARTRISE ENGINEERING						
PRODUCT FAMILY: EVOLVED, C4, SRH, SRA, SRD ELEVATOR CONTROLLERS						
MODEL NUMBER	DIMENSIONS (in)			MAX. WT. (lb)	DESCRIPTION / NOTES	BASIS
	DEPTH	WIDTH	HEIGHT			
C4/SRA - Smartrise Universal AC Traction Controller (continued)						
C4/SRA-2030	14	30	39	232	102A, 240V, CS	UUT 4
C4/SRA-4010	16	36	48	450	19A, 480V	INTERP
C4/SRA-4015	16	36	48	450	24A, 480V	INTERP
C4/SRA-4020	16	36	48	450	31A, 480V	INTERP
C4/SRA-4030	16	36	48	450	48A, 480V	INTERP
C4/SRA-4040	16	36	48	450	60A, 480V	INTERP
C4/SRA-4060	16	36	48	450	84A, 480V	INTERP
C4/SRA-4075	16	36	48	450	111A, 480V, CS	UUT 7
C4/SRA-2010	16	36	48	450	36A, 240V	INTERP
C4/SRA-2015	16	36	48	450	48A, 240V	INTERP
C4/SRA-2020	16	36	48	450	60A, 240V	INTERP
C4/SRA-2025	16	36	48	450	87A, 240V	INTERP
C4/SRA-2030	16	36	48	450	UUT=400lb, 102A, 240V, SS	UUT 8
C4/SRA-2040	16	36	48	450	114A, 240V	EXTRAP
C4/SRD - Smartrise Universal DC Traction Controller						
C4/SRD-060	16	36	48	339	UUT=324lb, 100A, 480V, CS	UUT 9
C4/SRD-125	16	36	48	339	195A, 480V, CS	UUT 10
MOUNTING:	Rigid wall mounted.			SEISMIC LEVELS:	$S_{DS} = 2.0g$ for $z/h = 1$ $S_{DS} = 2.6g$ for $z/h = 0$ $I_p = 1.5$	
NOTES:	<p>Product Construction: Carbon steel (NEMA 1, 4, and 12) and stainless steel (NEMA 4X) enclosures. Carbon steel sub-frame.</p> <p>Options/Subcomponents: Wall mounted enclosures may contain any combination of subcomponents listed in Table 3 to create a complete controller.</p> <p>1. Maximum weight for the enclosure size is taken as the maximum tested weight for that size, regardless of controller type.</p> <p>2. SRH interpolation to the 14x30x39 enclosure is acceptable because the subcomponents are all certified in Table 3 and the weight is less than or equal to the enclosure weight tested for the SRA.</p>					

ATTACHMENT 1: CERTIFIED COMPONENTS

SPECIAL SEISMIC CERTIFICATION

TABLE 2 - FLOOR MOUNTED

DOCUMENT NO.: 16123CR1.1

MANUFACTURER: SMARTRISE ENGINEERING						
PRODUCT FAMILY: EVOLVED, C4, SRH, SRA, SRD ELEVATOR CONTROLLERS						
MODEL NUMBER	DIMENSIONS (in)			MAX. WT. (lb)	DESCRIPTION / NOTES	BASIS
	DEPTH	WIDTH	HEIGHT			
C4/SRA - Smartrise Universal AC Traction Controller						
C4/SRA-4010	16	36	60	450	19A, 480V	EXTRAP
C4/SRA-4015	16	36	60	450	24A, 480V	EXTRAP
C4/SRA-4020	16	36	60	450	31A, 480V	EXTRAP
C4/SRA-4030	16	36	60	450	48A, 480V	EXTRAP
C4/SRA-4040	16	36	60	450	60A, 480V	EXTRAP
C4/SRA-4060	16	36	60	450	84A, 480V	EXTRAP
C4/SRA-4075	16	36	60	450	111A, 480V, CS	UUT 7
C4/SRA-2010	16	36	60	450	36A, 240V	INTERP
C4/SRA-2015	16	36	60	450	48A, 240V	INTERP
C4/SRA-2020	16	36	60	450	60A, 240V	INTERP
C4/SRA-2025	16	36	60	450	87A, 240V	INTERP
C4/SRA-2030	16	36	60	450	UUT=400lb, 102A, 240V, SS	UUT 8
C4/SRA-2040	16	36	60	450	114A, 240V	EXTRAP
C4/SRD - Smartrise Universal DC Traction Controller						
C4/SRD-060	16	36	60	339	UUT=324lb, 100A, 480V, CS	UUT 9
C4/SRD-125	16	36	60	339	195A, 480V, CS	UUT 10
MOUNTING:	Rigid floor mounted.			SEISMIC LEVELS:	$S_{DS} = 2.0g$ for $z/h = 1$ $S_{DS} = 2.6g$ for $z/h = 0$ $I_p = 1.5$	
NOTES:	Product Construction: Carbon steel (NEMA 1, 4, and 12) and stainless steel (NEMA 4X) enclosures. Carbon steel sub-frame. Options/Subcomponents: Floor mounted enclosures may contain any combination of subcomponents listed in Table 4 to create a complete controller.					

ATTACHMENT 1: CERTIFIED SUBCOMPONENTS

SPECIAL SEISMIC CERTIFICATION

TABLE 3 - SUBCOMPONENTS [WALL]

DOCUMENT NO.: 16123CR1.1

MANUFACTURER: SMARTRISE ENGINEERING						
PRODUCT FAMILY: EVOLVED, C4, SRH, SRA, SRD ELEVATOR CONTROLLERS						
MODEL NUMBER	DIMENSIONS (in)			MAX. WT. (lb)	DESCRIPTION / NOTES	BASIS
	DEPTH	WIDTH	HEIGHT			
Wenzhou Jinxin Electric Co. - Enclosures						
30X24X10	10.0	24.0	30.0	57	Carbon steel	UUT 1, 2
39X30X14	14.0	30.0	39.0	91	Carbon steel	UUT 3-6
48X36X16	16.0	36.0	48.0	151	Carbon steel	UUT 7,9,10
30X24X10	10.0	24.0	30.0	57	Stainless steel	INTERP
39X30X14	14.0	30.0	39.0	91	Stainless steel	INTERP
48X36X16	16.0	36.0	48.0	151	Stainless steel	UUT 8
Satie North America Inc. - Sub-Frame						
809203	1.0	21.0	28.0	5	Aluminum	UUT 1, 2
811216	1.0	28.0	34.0	9	Aluminum	UUT 3-6
902215	1.0	35.0	45.0	17	Aluminum	UUT 7-10
Sprecher + Schuh - PCEC Soft Starts						
PCEC-032-600V-120V	4.6	7.0	5.7	4		EXTRAP
PCEC-064-600V-120V	4.6	7.0	5.7	4		UUT 1
PCEC-074-600V-120V	5.8	9.5	8.9	14		INTERP
PCEC-104-600V-120V	5.8	9.5	8.9	14		INTERP
PCEC-147-600V-120V	5.8	9.5	8.9	14		UUT 2
Magnetek - HPV900 2 Drives						
HPV900-4008-2E1-01	7.4	7.3	11.0	15		EXTRAP
HPV900-2025-2E1-01	8.3	9.1	12.6	23		UUT 3, 8
HPV900-2031-2E1-01	8.3	9.1	12.6	23		INTERP
HPV900-4012-2E1-01	8.3	9.1	12.6	23		INTERP
HPV900-4016-2E1-01	8.3	9.1	12.6	23		INTERP
HPV900-4021-2E1-01	8.9	10.4	15.6	36		INTERP
HPV900-4027-2E1-01	8.9	10.4	15.6	36		UUT 5
HPV900-2041-2E1-01	10.5	11.4	18.9	71		INTERP
HPV900-2052-2E1-01	10.5	11.4	18.9	71		INTERP
HPV900-2075-2E1-01	12.2	12.0	21.1	72		INTERP
HPV900-2088-2E1-01	12.2	12.0	21.1	72		UUT 4
HPV900-4034-2E1-01	12.2	12.0	21.1	72		INTERP
HPV900-4041-2E1-01	12.2	12.0	21.1	72		INTERP
HPV900-4052-2E1-01	12.2	12.0	21.1	72		INTERP
HPV900-2098-2E1-01	13.6	15.5	27.2	121		INTERP
HPV900-4065-2E1-01	13.6	15.5	27.2	121		UUT 6
HPV900-4072-2E1-01	13.6	15.5	27.2	121		INTERP
HPV900-4096-2E1-01	13.6	15.5	27.2	121		UUT 7
Magnetek - DSD 412 DC Drives						
53ST015-3A00	10.0	13.0	21.0	29		EXTRAP
53ST030-3A00	10.0	13.0	22.0	42		UUT 10
53ST060-3A00	10.0	13.0	22.0	42		INTERP
53ST125-3A00	14.0	13.0	22.0	62		UUT 9
NOTES: Table continues on the next page. Additional notes, information, and seismic parameters are shown at the end of the table.						

ATTACHMENT 1: CERTIFIED SUBCOMPONENTS

SPECIAL SEISMIC CERTIFICATION

TABLE 3 - SUBCOMPONENTS [WALL] (continued)

DOCUMENT NO.: 16123CR1.1

MANUFACTURER: SMARTRISE ENGINEERING						
PRODUCT FAMILY: EVOLVED, C4, SRH, SRA, SRD ELEVATOR CONTROLLERS						
MODEL NUMBER	DIMENSIONS (in)			MAX. WT. (lb)	DESCRIPTION / NOTES	BASIS
	DEPTH	WIDTH	HEIGHT			
Magnetek - R1000 Regenerative Drives						
RU2A0014FAA	7.4	7.1	11.8	13		UUT 8
RU4A0028FAA	7.8	8.7	14.4	18		INTERP
RU2A0017FAA	7.8	8.7	14.4	20		INTERP
RU2A0020FAA	7.8	8.7	14.4	20		INTERP
RU2A0028FAA	7.8	8.7	15.2	20		INTERP
RU4A0035FAA	10.2	10.8	17.7	44		INTERP
RU4A0043FAA	10.2	10.8	17.7	44		INTERP
RU2A0035FAA	10.2	10.8	17.7	46		UUT 8
Reynolds and Reynolds - RB-2 Battery Resque						
RB2-240	8.5	6.0	6.5	25		UUT 8
Sprecher + Schuh - CA6 & CA7 Contactors						
CA7-12	3.4	1.8	3.2	0.9		UUT 3, 4
CA7-23	3.4	1.8	3.2	0.9		INTERP
CA7-37	4.3	1.8	3.2	1.0		INTERP
CA7-43	4.4	2.1	3.2	1.3		INTERP
CA7-60	4.4	2.8	4.8	3.2		UUT 3, 5
CA7-72	4.4	2.8	4.8	3.2		UUT 6
CA7-85	4.4	2.8	4.8	3.2		UUT 4
CA7-97	4.4	2.8	4.8	3.2		UUT 8
CA6-140	6.1	4.8	6.7	7.3		INTERP
CA6-180	6.1	4.8	6.7	7.3		INTERP
CA6-210	7.1	6.1	8.7	17		UUT 7
ABB - EHDB Contactors						
EHDB220C-1L	6.7	5.4	7.8	9.2		UUT 9
EHDB280C-1L	6.7	5.4	7.8	9.2		UUT 10
Pacific Transformers - Transformer						
31725-MOD4	4.4	5.3	6.4	25		UUT 1-7, 9
KEB - Z1F Motor Chokes						
15Z1F04-1005	7.0	2.8	7.0	3.3		UUT 7
17Z1F04-1005	8.9	5.1	8.6	7.2		INTERP
21Z1F04-1005	8.2	6.1	10.5	22		UUT 9
KEB - Z1B Line Reactors						
13Z1B05-1002	4.0	3.8	4.2	4.0		EXTRAP
14Z1B05-1002	4.0	3.8	4.2	4.0		EXTRAP
12Z1B03-1002	5.7	2.6	5.8	8.0		EXTRAP
12Z1B05-1002	5.7	2.7	5.8	4.0		EXTRAP
15Z1B05-1002	5.0	4.0	6.0	8.0		EXTRAP
16Z1B05-1002	5.0	4.0	6.0	8.0		EXTRAP
13Z1B03-1002	5.7	3.0	5.8	8.0		EXTRAP
17Z1B05-1002	5.8	4.3	7.2	10		UUT 7
18Z1B05-1002	5.8	4.3	7.2	10		INTERP
14Z1B03-1002	5.7	3.0	5.8	12		INTERP
NOTES: Table continues on the next page. Additional notes, information, and seismic parameters are shown at the end of the table.						

ATTACHMENT 1: CERTIFIED SUBCOMPONENTS
SPECIAL SEISMIC CERTIFICATION
TABLE 3 - SUBCOMPONENTS [WALL] (continued)
DOCUMENT NO.: 16123CR1.1

MANUFACTURER: SMARTRISE ENGINEERING						
PRODUCT FAMILY: EVOLVED, C4, SRH, SRA, SRD ELEVATOR CONTROLLERS						
MODEL NUMBER	DIMENSIONS (in)			MAX. WT. (lb)	DESCRIPTION / NOTES	BASIS
	DEPTH	WIDTH	HEIGHT			
KEB - Z1B Line Reactors (continued)						
15Z1B03-1002	6.9	3.5	7.0	12		INTERP
19Z1B05-1002	5.8	5.0	7.2	15		INTERP
16Z1B03-1002	6.3	5.1	8.6	12		INTERP
17Z1B03-1002	6.7	5.5	8.6	21		INTERP
20Z1B05-1002	7.0	6.0	9.0	25		INTERP
18Z1B03-1002	6.7	5.9	8.6	30		INTERP
19Z1B03-1002	7.1	6.1	9.6	30		INTERP
20Z1B03-1002	7.1	6.5	9.6	30		INTERP
22Z1B05-1002	7.0	6.0	9.0	30		INTERP
21Z1B05-1002	8.2	6.1	10.5	30		INTERP
23Z1B05-1002	9.0	7.0	11.0	40		UUT 10
MTE - RL Line Reactors						
RL-00402	4.1	2.8	4.4	4		EXTRAP
RL-00801	4.8	3.0	6.0	7		EXTRAP
RL-00802	4.8	3.0	6.0	8		EXTRAP
RL-01201	5.0	3.3	6.0	9		EXTRAP
RL-01801	5.3	3.2	6.0	9		EXTRAP
RL-01202	5.0	3.3	6.0	10		EXTRAP
RL-02501	5.8	3.5	7.2	11		EXTRAP
RL-01802	5.3	3.5	6.0	12		EXTRAP
RL-02502	5.8	3.5	7.2	14		EXTRAP
RL-03501	5.8	4.0	7.2	14		EXTRAP
RL-03502	5.8	4.0	7.2	16		EXTRAP
RL-04501	7.4	4.7	9.0	23		UUT 8
RL-05501	7.3	5.3	9.0	24		INTERP
RL-08001	7.2	6.3	9.0	25		UUT 8
RL-05502	7.0	5.3	9.0	27		INTERP
RL-04502	7.4	4.7	9.0	28		INTERP
RL-10001	7.3	6.5	9.0	29		INTERP
RL-13001	7.0	4.7	9.0	29		INTERP
RL-08002	7.2	6.5	9.0	33		UUT 10
Ningbo Pecaf Electronic - Dynamic Brake Resistor						
1	4.9	10.0	18.1	8.1		UUT 3
2-3	6.7	10.0	18.1	11		UUT 5, 8
4	10.0	10.0	18.1	17		UUT 4
6	14.0	10.0	18.1	22		INTERP
large 6	14.0	10.0	20.1	30		UUT 7
Thermal Edge - CS011 AC Unit						
CS-011-126-04-XBX-DRY CONTACT	7.0	7.0	17.0	30		UUT 7
CS-011-126-12-XBX-DRY CONTACT	7.0	7.0	17.0	30		INTERP
CS-011-126-4X-XBX-DRY CONTACT	7.0	7.0	17.0	30		UUT 8
NOTES:	Table continues on the next page. Additional notes, information, and seismic parameters are shown at the end of the table.					

ATTACHMENT 1: CERTIFIED SUBCOMPONENTS

SPECIAL SEISMIC CERTIFICATION

TABLE 3 - SUBCOMPONENTS [WALL] (continued)

DOCUMENT NO.: 16123CR1.1

MANUFACTURER: SMARTRISE ENGINEERING						
PRODUCT FAMILY: EVOLVED, C4, SRH, SRA, SRD ELEVATOR CONTROLLERS						
MODEL NUMBER	DIMENSIONS (in)			MAX. WT. (lb)	DESCRIPTION / NOTES	BASIS
	DEPTH	WIDTH	HEIGHT			
Phoenix Contact - Quint Power Supply						
QUINT-PS/1AC/24DC/5	4.9	5.1	1.6	1.7		UUT 1-10
Hoffman Enclosures, Inc - Light						
LF120V15	2.7	1.3	15	1.3		UUT 10
GrayBar - Enclosure Fan						
22210	1.5	4.7	4.7	1.1		UUT 10
PuSH - SR Printed Circuit Boards						
SR-1020	0.6	3.0	3.1	0.1		INTERP
SR-1030	0.7	2.0	1.8	0.1		INTERP
SR-2001	0.8	4.1	2.0	0.1		UUT 1-10
SR-2002	0.9	0.7	1.4	0.1		UUT 3-10
SR-2005	1.6	4.7	2.0	0.2		INTERP
SR-2006	0.6	2.7	3.0	0.1		INTERP
SR-2010	0.4	3.2	2.5	0.1		INTERP
SR-2011	0.7	4.0	7.5	0.4		UUT 10
SR-3010	1.0	5.5	8.0	0.6		UUT 1-10
SR-3030	1.0	5.5	6.0	0.5		INTERP
SR-3031	0.5	5.5	3.2	0.1		INTERP
SR-3032	1.6	5.5	9.5	1.0		INTERP
SR-3038-5A	1.9	5.5	3.1	0.6		INTERP
SR-3038-10A	3.3	5.5	3.1	0.7		INTERP
SR-3040	0.5	2.3	1.4	0.1		UUT 3-6, 9
SR-3041	0.6	5.5	3.2	0.1		INTERP
SR-3045	0.9	5.6	4.2	0.2		INTERP
SR-3050	0.9	3.5	3.3	0.2		UUT 1, 2
SR-3070	0.5	3.2	3.7	0.1		UUT 1-10
SR-3080	0.5	1.8	2.1	0.1		UUT 8
SR-3090	1.9	5.5	3.0	0.6		UUT 7
SR-BU-B1	0.9	4.3	3.2	0.2		UUT 3-8
SR-TT3-MOD1	2.7	5.8	3.0	0.5		INTERP
SR-TT25A-MOD1	3.9	5.8	5.0	1.3		UUT 9
Smartrise - Printed Circuit Board						
8200-300 (Smartview 2.0)	1.4	2.4	3.6	0.3		UUT 7, 8
Ohmite - L225 & D100 Soft Drop Resistor						
D100K1K0E	0.8	0.8	6.5	0.2		EXTRAP
D100K50RE	0.8	0.8	6.5	0.2		EXTRAP
L225J50RE	2.5	2.5	10.5	0.6		EXTRAP
L225J75RE	2.5	2.5	10.5	0.6		EXTRAP
L225J100E	2.5	2.5	10.5	0.6		UUT 3-6,7,9
L225J150E	2.5	2.5	10.5	0.6		INTERP
NOTES: Table continues on the next page. Additional notes, information, and seismic parameters are shown at the end of the table.						

ATTACHMENT 1: CERTIFIED SUBCOMPONENTS
SPECIAL SEISMIC CERTIFICATION
TABLE 3 - SUBCOMPONENTS [WALL] (continued)
DOCUMENT NO.: 16123CR1.1

MANUFACTURER: SMARTRISE ENGINEERING						
PRODUCT FAMILY: EVOLVED, C4, SRH, SRA, SRD ELEVATOR CONTROLLERS						
MODEL NUMBER	DIMENSIONS (in)			MAX. WT. (lb)	DESCRIPTION / NOTES	BASIS
	DEPTH	WIDTH	HEIGHT			
Ohmite - L225 & D100 Soft Drop Resistor (continued)						
L225J200E	2.5	2.5	10.5	0.6		INTERP
L225J250E	2.5	2.5	10.5	0.6		INTERP
L225J500E	2.5	2.5	10.5	0.6		INTERP
L225J750E	2.5	2.5	10.5	0.6		UUT 10
Hubbell - GFCI Outlet						
DRUBGF115	2.8	3.2	5.3	0.7		UUT 10
Sprecher + Schuh - L8 & L9 Circuit Breakers						
L8-6/1/D	2.9	0.4	4.4	0.4		UUT 1-6
L9-3/2/D	2.9	0.7	4.4	0.6		UUT 7
L9-6/2/D	2.9	0.7	4.4	0.6		UUT 1-6,8-10
Phoenix Contact - UT 6 Circuit Protection						
UT 6-TMC M 1A	3.4	0.5	3.5	0.2		UUT 1-10
UT 6-TMC M 2A	3.4	0.5	3.5	0.2		UUT 1-10
UT 6-TMC M 4A	3.4	0.5	3.5	0.2		UUT 3-7
UT 6-TMC M 6A	3.4	0.5	3.5	0.2		UUT 3-6
UT 6-TMC M 8A	3.4	0.5	3.5	0.2		INTERP
UT 6-TMC M 10A	3.4	0.5	3.5	0.2		UUT 7
Phoenix Contact - Terminal Blocks						
UTTB 2,5	2.6	0.2	2.8	< 0.1		UUT 1-10
UTTB 2,5-PE	2.6	0.2	2.8	< 0.1		UUT 1-10
D-UTTB 2,5/4	2.3	0.1	2.8	< 0.1		UUT 1-10
ATP-UTTB 2,5/4	2.8	0.1	2.9	< 0.1		UUT 1-10
UTTB 4 HV	2.6	0.2	3.0	< 0.1		INTERP
UT 35	2.6	0.7	2.4	0.1		UUT 3-6
UT 35-PE	2.6	0.7	2.4	0.2		UUT 3-6, 9
USLKG 95	3.5	1.0	3.3	0.5		UUT 9
UKH 95	3.7	1.0	3.3	0.7		UUT 9
C.E. Electronics - Serial PI Driver						
SEI001-X	1.0	3.0	5.0	0.2		UUT 1-6,10
Emotive - Serial PI Driver						
MX003DPOX-SM	1.4	3.2	5.0	0.2		UUT 9
Automation Direct - 78 Relays						
782-2C-24D	2.7	1.2	4.0	0.2		UUT 3-10
Phoenix Contact - PLC & PSR Relays						
PLC-RSC-24DC/21	3.7	0.2	3.2	0.1		UUT 8
PLC-RSC-120UC/22	3.7	0.2	3.2	0.1		INTERP
PSR-SCF-24UC/URM/2X21	2.4	0.7	3.0	0.1		UUT 1-10
Macromatic - PCP Relays						
PCPU	3.0	1.7	2.4	0.4		UUT 10
Vishay Semiconductors - Diode Bridge						
36MB160A	1.1	0.8	1.1	0.1		UUT 7, 9
NOTES: Table continues on the next page. Additional notes, information, and seismic parameters are shown at the end of the table.						

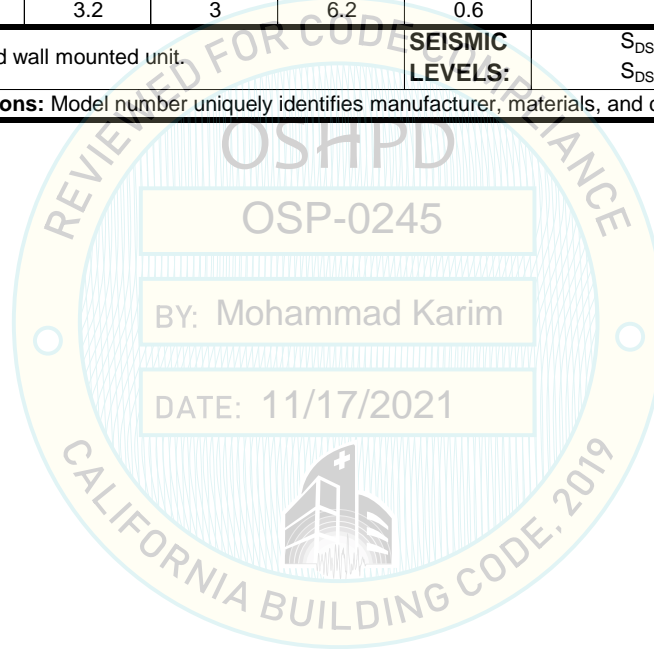
ATTACHMENT 1: CERTIFIED SUBCOMPONENTS

SPECIAL SEISMIC CERTIFICATION

TABLE 3 - SUBCOMPONENTS [WALL] (continued)

DOCUMENT NO.: 16123CR1.1

MANUFACTURER: SMARTRISE ENGINEERING						
PRODUCT FAMILY: EVOLVED, C4, SRH, SRA, SRD ELEVATOR CONTROLLERS						
MODEL NUMBER	DIMENSIONS (in)			MAX. WT. (lb)	DESCRIPTION / NOTES	BASIS
	DEPTH	WIDTH	HEIGHT			
TE Connectivity - AC Filter						
16WGF1	1.5	1.5	2.8	0.3		UUT 7, 9
Smartrise - Resets						
Traction loss Reset	2.1	2.1	3.1	0.4		UUT 7
Governor Reset Box	2.0	2.8	4.0	0.6		UUT 7
Discrete IP	0.7	3.8	7.5	0.4		UUT 10
New Brake Board	3.2	3	6.2	0.6		UUT 7
MOUNTING:	Mounted within rigid wall mounted unit.			SEISMIC LEVELS:	$S_{DS} = 2.0g$ for $z/h = 1$ $S_{DS} = 2.6g$ for $z/h = 0$ $I_p = 1.5$	
NOTES:	Construction/Options: Model number uniquely identifies manufacturer, materials, and configuration of subcomponents.					



ATTACHMENT 1: CERTIFIED SUBCOMPONENTS

SPECIAL SEISMIC CERTIFICATION

TABLE 4 - SUBCOMPONENTS [FLOOR]

DOCUMENT NO.: 16123CR1.1

MANUFACTURER: SMARTRISE ENGINEERING						
PRODUCT FAMILY: EVOLVED, C4, SRH, SRA, SRD ELEVATOR CONTROLLERS						
MODEL NUMBER	DIMENSIONS (in)			MAX. WT. (lb)	DESCRIPTION / NOTES	BASIS
	DEPTH	WIDTH	HEIGHT			
Wenzhou Jinxin Electric Co. - Enclosures						
16x36x48	16.0	36.0	48.0	151	Carbon steel	UUT 7,9,10
16x36x48	16.0	36.0	48.0	151	Stainless steel	UUT 8
Satie North America Inc. - Sub-Frame						
902215	1.0	35.0	45.0	17	Aluminum	UUT 7-10
Magnetek - DSD 412 DC Drives						
53ST015-3A00	10.0	13.0	21.0	29		EXTRAP
53ST030-3A00	10.0	13.0	22.0	42		UUT 10
53ST060-3A00	10.0	13.0	22.0	42		INTERP
53ST125-3A00	14.0	13.0	22.0	62		UUT 9
Magnetek - HPV900 2 Drives						
HPV900-4008-2E1-01	7.4	7.3	11.0	15		EXTRAP
HPV900-2025-2E1-01	8.3	9.1	12.6	23		UUT 8
HPV900-2031-2E1-01	8.3	9.1	12.6	23		INTERP
HPV900-4012-2E1-01	8.3	9.1	12.6	23		INTERP
HPV900-4016-2E1-01	8.3	9.1	12.6	23		INTERP
HPV900-4021-2E1-01	8.9	10.4	15.6	36		INTERP
HPV900-4027-2E1-01	8.9	10.4	15.6	36		INTERP
HPV900-2041-2E1-01	10.5	11.4	18.9	71		INTERP
HPV900-2052-2E1-01	10.5	11.4	18.9	71		INTERP
HPV900-2075-2E1-01	12.2	12.0	21.1	72		INTERP
HPV900-2088-2E1-01	12.2	12.0	21.1	72		INTERP
HPV900-4034-2E1-01	12.2	12.0	21.1	72		INTERP
HPV900-4041-2E1-01	12.2	12.0	21.1	72		INTERP
HPV900-4052-2E1-01	12.2	12.0	21.1	72		INTERP
HPV900-2098-2E1-01	13.6	15.5	27.2	121		INTERP
HPV900-4065-2E1-01	13.6	15.5	27.2	121		INTERP
HPV900-4072-2E1-01	13.6	15.5	27.2	121		INTERP
HPV900-4096-2E1-01	13.6	15.5	27.2	121		UUT 7
Magnetek - R1000 Regenerative Drives						
RU2A0014FAA	7.4	7.1	11.8	13		UUT 8
RU4A0028FAA	7.8	8.7	14.4	18		INTERP
RU2A0017FAA	7.8	8.7	14.4	20		INTERP
RU2A0020FAA	7.8	8.7	14.4	20		INTERP
RU2A0028FAA	7.8	8.7	15.2	20		INTERP
RU4A0035FAA	10.2	10.8	17.7	44		INTERP
RU4A0043FAA	10.2	10.8	17.7	44		INTERP
RU2A0035FAA	10.2	10.8	17.7	46		UUT 8
Reynolds and Reynolds - RB-2 Battery Resque						
RB2-240	8.5	6.0	6.5	25		UUT 8
NOTES: Table continues on the next page. Additional notes, information, and seismic parameters are shown at the end of the table.						

ATTACHMENT 1: CERTIFIED SUBCOMPONENTS

SPECIAL SEISMIC CERTIFICATION

TABLE 4 - SUBCOMPONENTS [FLOOR] (continued)

DOCUMENT NO.: 16123CR1.1

MANUFACTURER: SMARTRISE ENGINEERING						
PRODUCT FAMILY: EVOLVED, C4, SRH, SRA, SRD ELEVATOR CONTROLLERS						
MODEL NUMBER	DIMENSIONS (in)			MAX. WT. (lb)	DESCRIPTION / NOTES	BASIS
	DEPTH	WIDTH	HEIGHT			
Sprecher + Schuh - CA6 & CA7 Contactors						
CA7-12	3.4	1.8	3.2	0.9		EXTRAP
CA7-23	3.4	1.8	3.2	0.9		EXTRAP
CA7-37	4.3	1.8	3.2	1.0		EXTRAP
CA7-43	4.4	2.1	3.2	1.3		EXTRAP
CA7-60	4.4	2.8	4.8	3.2		EXTRAP
CA7-72	4.4	2.8	4.8	3.2		EXTRAP
CA7-85	4.4	2.8	4.8	3.2		EXTRAP
CA7-97	4.4	2.8	4.8	3.2		UUT 8
CA6-140	6.1	4.8	6.7	7.3		INTERP
CA6-180	6.1	4.8	6.7	7.3		INTERP
CA6-210	7.1	6.1	8.7	17		UUT 7
ABB - EHDB Contactors						
EHDB220C-1L	6.7	5.4	7.8	9.2		UUT 9
EHDB280C-1L	6.7	5.4	7.8	9.2		UUT 10
Pacific Transformers - Transformer						
31725-MOD4	4.4	5.3	6.4	25		UUT 7, 9
KEB - Z1F Motor Chokes						
15Z1F04-1005	7.0	2.8	7.0	8.6		UUT 7
17Z1F04-1005	8.9	5.1	8.6	22		INTERP
21Z1F04-1005	8.2	6.1	10.5	34		UUT 9
KEB - Z1B Line Reactors						
13Z1B05-1002	4.0	3.8	4.2	4.0		EXTRAP
14Z1B05-1002	4.0	3.8	4.2	4.0		EXTRAP
12Z1B03-1002	5.7	2.6	5.8	4.4		EXTRAP
12Z1B05-1002	5.7	2.7	5.8	4.6		EXTRAP
15Z1B05-1002	5.0	4.0	6.0	8.0		EXTRAP
16Z1B05-1002	5.0	4.0	6.0	8.0		EXTRAP
13Z1B03-1002	5.7	3.0	5.8	8.2		EXTRAP
17Z1B05-1002	5.8	4.3	7.2	10		UUT 7
18Z1B05-1002	5.8	4.3	7.2	10		INTERP
14Z1B03-1002	5.7	3.0	5.8	11		INTERP
15Z1B03-1002	6.9	3.5	7.0	13		INTERP
19Z1B05-1002	5.8	5.0	7.2	15		INTERP
16Z1B03-1002	6.3	5.1	8.6	16		INTERP
17Z1B03-1002	6.7	5.5	8.6	21		INTERP
20Z1B05-1002	7.0	6.0	9.0	25		INTERP
18Z1B03-1002	6.7	5.9	8.6	27		INTERP
19Z1B03-1002	7.1	6.1	9.6	27		INTERP
20Z1B03-1002	7.1	6.5	9.6	33		INTERP
22Z1B05-1002	7.0	6.0	9.0	33		INTERP
21Z1B05-1002	8.2	6.1	10.5	34		INTERP
23Z1B05-1002	9	7	11	40		UUT 10
NOTES: Table continues on the next page. Additional notes, information, and seismic parameters are shown at the end of the table.						

ATTACHMENT 1: CERTIFIED SUBCOMPONENTS

SPECIAL SEISMIC CERTIFICATION

TABLE 4 - SUBCOMPONENTS [FLOOR] (continued)

DOCUMENT NO.: 16123CR1.1

MANUFACTURER: SMARTRISE ENGINEERING						
PRODUCT FAMILY: EVOLVED, C4, SRH, SRA, SRD ELEVATOR CONTROLLERS						
MODEL NUMBER	DIMENSIONS (in)			MAX. WT. (lb)	DESCRIPTION / NOTES	BASIS
	DEPTH	WIDTH	HEIGHT			
MTE - RL Line Reactors						
RL-00402	4.1	2.8	4.4	4		EXTRAP
RL-00801	4.8	3.0	6.0	7		EXTRAP
RL-00802	4.8	3.0	6.0	8		EXTRAP
RL-01201	5.0	3.3	6.0	9		EXTRAP
RL-01801	5.3	3.2	6.0	9		EXTRAP
RL-01202	5.0	3.3	6.0	10		EXTRAP
RL-02501	5.8	3.5	7.2	11		EXTRAP
RL-01802	5.3	3.5	6.0	12		EXTRAP
RL-02502	5.8	3.5	7.2	14		EXTRAP
RL-03501	5.8	4.0	7.2	14		EXTRAP
RL-03502	5.8	4.0	7.2	16		EXTRAP
RL-04501	7.4	4.7	9.0	23		UUT 8
RL-05501	7.3	5.3	9.0	24		INTERP
RL-08001	7.2	6.3	9.0	25		UUT 8
RL-05502	7.0	5.3	9.0	27		INTERP
RL-04502	7.4	4.7	9.0	28		INTERP
RL-10001	7.3	6.5	9.0	29		INTERP
RL-13001	7.0	4.7	9.0	29		INTERP
RL-08002	7.2	6.5	9.0	33		UUT 10
Ningbo Pecaf Electronic - Dynamic Brake Resistor						
1	4.9	10.0	18.1	8.1		EXTRAP
2-3	6.7	10.0	18.1	11		UUT 8
4	10.0	10.0	18.1	17		INTERP
6	14.0	10.0	18.1	22		INTERP
large 6	14.0	10.0	20.1	30		UUT 7
Thermal Edge - CS011 AC Unit						
CS-011-126-04-XBX-DRY CONTACT	7.0	7.0	17.0	30		UUT 7
CS-011-126-12-XBX-DRY CONTACT	7.0	7.0	17.0	30		INTERP
CS-011-126-4X-XBX-DRY CONTACT	7.0	7.0	17.0	30		UUT 8
Phoenix Contact - Quint Power Supply						
QUINT-PS/1AC/24DC/5	4.9	5.1	1.6	1.7		UUT 7-10
Hoffman Enclosures, Inc - Light						
LF120V15	2.7	1.3	15.0	1.3		UUT 10
GrayBar - Enclosure Fan						
22210	1.5	4.7	4.7	1.1		UUT 10
PuSH - SR Printed Circuit Boards						
SR-1020	0.6	3.0	3.1	0.1		INTERP
SR-1030	0.7	2.0	1.8	0.1		INTERP
SR-2001	0.8	4.1	2.0	0.1		UUT 10
SR-2002	0.9	0.7	1.4	0.1		UUT 7-10
SR-2005	1.6	4.7	2.0	0.2		INTERP
SR-2006	0.6	2.7	3.0	0.1		INTERP
NOTES:	Table continues on the next page. Additional notes, information, and seismic parameters are shown at the end of the table.					

ATTACHMENT 1: CERTIFIED SUBCOMPONENTS
SPECIAL SEISMIC CERTIFICATION
TABLE 4 - SUBCOMPONENTS [FLOOR] (continued)

DOCUMENT NO.: 16123CR1.1

MANUFACTURER: SMARTRISE ENGINEERING						
PRODUCT FAMILY: EVOLVED, C4, SRH, SRA, SRD ELEVATOR CONTROLLERS						
MODEL NUMBER	DIMENSIONS (in)			MAX. WT. (lb)	DESCRIPTION / NOTES	BASIS
	DEPTH	WIDTH	HEIGHT			
PuSH - SR Printed Circuit Boards (continued)						
SR-2010	0.4	3.2	2.5	0.1		INTERP
SR-2011	0.7	4.0	7.5	0.4		UUT 10
SR-3010	1.0	5.5	8.0	0.6		UUT 10
SR-3030	1.0	5.5	6.0	0.5		INTERP
SR-3031	0.5	5.5	3.2	0.1		INTERP
SR-3032	1.6	5.5	9.5	1.0		INTERP
SR-3038-5A	1.9	5.5	3.1	0.6		INTERP
SR-3038-10A	3.3	5.5	3.1	0.7		INTERP
SR-3040	0.5	2.3	1.4	0.1		UUT 9
SR-3041	0.6	5.5	3.2	0.1		INTERP
SR-3045	0.9	5.6	4.2	0.2		INTERP
SR-3050	0.9	3.5	3.3	0.2		INTERP
SR-3070	0.5	3.2	3.7	0.1		UUT 10
SR-3080	0.5	1.8	2.1	0.1		UUT 8
SR-3090	1.9	5.5	3.0	0.6		UUT 7
SRE-BU-B1	0.9	4.3	3.2	0.2		UUT 8
SR-TT3-MOD1	2.7	5.8	3.0	0.5		INTERP
SR-TT25A-MOD1	3.9	5.8	5.0	1.3		UUT 9
Smartrise - Printed Circuit Board						
8200-300 (Smartview 2.0)	1.4	2.4	3.6	0.3		UUT 7, 8
Ohmite - L225 & D100 Soft Drop Resistor						
D100K1K0E	0.8	0.8	6.5	0.2		EXTRAP
D100K50RE	0.8	0.8	6.5	0.2		EXTRAP
L225J50RE	2.5	2.5	10.5	0.6		EXTRAP
L225J75RE	2.5	2.5	10.5	0.6		EXTRAP
L225J100E	2.5	2.5	10.5	0.6		UUT 7, 9
L225J150E	2.5	2.5	10.5	0.6		INTERP
L225J200E	2.5	2.5	10.5	0.6		INTERP
L225J250E	2.5	2.5	10.5	0.6		INTERP
L225J500E	2.5	2.5	10.5	0.6		INTERP
L225J750E	2.5	2.5	10.5	0.6		UUT 10
Hubbell - GFCI Outlet						
DRUBGF115	2.8	3.2	5.3	0.7		UUT 10
Sprecher + Schuh - L8 & L9 Circuit Breakers						
L9-3/2/D	2.9	0.7	4.4	0.6		UUT 7
L9-6/2/D	2.9	0.7	4.4	0.6		UUT 8-10
NOTES:	Table continues on the next page. Additional notes, information, and seismic parameters are shown at the end of the table.					

ATTACHMENT 1: CERTIFIED SUBCOMPONENTS

SPECIAL SEISMIC CERTIFICATION

TABLE 4 - SUBCOMPONENTS [FLOOR] (continued)

DOCUMENT NO.: 16123CR1.1

MANUFACTURER: SMARTRISE ENGINEERING						
PRODUCT FAMILY: EVOLVED, C4, SRH, SRA, SRD ELEVATOR CONTROLLERS						
MODEL NUMBER	DIMENSIONS (in)			MAX. WT. (lb)	DESCRIPTION / NOTES	BASIS
	DEPTH	WIDTH	HEIGHT			
Phoenix Contact - UT 6 Circuit Protection						
UT 6-TMC M 1A	3.4	0.5	3.5	0.2		UUT 7-10
UT 6-TMC M 2A	3.4	0.5	3.5	0.2		UUT 7-10
UT 6-TMC M 4A	3.4	0.5	3.5	0.2		UUT 7
UT 6-TMC M 6A	3.4	0.5	3.5	0.2		INTERP
UT 6-TMC M 8A	3.4	0.5	3.5	0.2		INTERP
UT 6-TMC M 10A	3.4	0.5	3.5	0.2		UUT 7
Phoenix Contact - Terminal Blocks						
UTTB 2,5	2.6	0.2	2.8	< 0.1		UUT 7-10
UTTB 2,5-PE	2.6	0.2	2.8	< 0.1		UUT 7-10
D-UTTB 2,5/4	2.3	0.1	2.8	< 0.1		UUT 7-10
ATP-UTTB 2,5/4	2.8	0.1	2.9	< 0.1		UUT 7-10
UTTB 4 HV	2.6	0.2	3.0	< 0.1		INTERP
UT 35	2.6	0.7	2.4	0.1		INTERP
UT 35-PE	2.6	0.7	2.4	0.2		UUT 9
USLKG 95	3.5	1.0	3.3	0.5		UUT 9
UKH 95	3.7	1.0	3.3	0.7		UUT 9
C.E. Electronics - Serial PI Driver						
SEI001-X	1.0	3.0	5.0	0.2		UUT 10
Emotive - Serial PI Driver						
MX003DPOX-SM	1.4	3.2	5.0	0.2		UUT 9
Automation Direct - 78 Relays						
782-2C-24D	2.7	1.2	4.0	0.2		UUT 7-10
Phoenix Contact - PLC & PSR Relays						
PLC-RSC-24DC/21	3.7	0.2	3.2	0.1		UUT 8
PLC-RSC-120UC/22	3.7	0.2	3.2	0.1		
PSR-SCF-24UC/URM/2X21	2.4	0.7	3.0	0.1		UUT 7-10
Macromatic - PCP Relays						
PCPU	3.0	1.7	2.4	0.4		UUT 10
Vishay Semiconductors - Diode Bridge						
36MB160A	1.1	0.8	1.1	0.1		UUT 7, 9
TE Connectivity - AC Filter						
16WGF1	1.5	1.5	2.8	0.3		UUT 7, 9
Smartrise - Resets						
Traction loss Reset	2.1	2.1	3.1	0.4		UUT 7
Governor Reset Box	2	2.8	4	0.6		UUT 7
MOUNTING:	Mounted within rigid floor mounted unit.			SEISMIC LEVELS:	S _{DS} = 2.0g for z/h = 1 S _{DS} = 2.6g for z/h = 0 I _p = 1.5	
NOTES:	Construction/Options: Model number uniquely identifies manufacturer, materials, and configuration of subcomponents.					

ATTACHMENT 2: UNIT UNDER TEST SUMMARIES

SPECIAL SEISMIC CERTIFICATION

UUT 1

DOCUMENT NO.: 16123CR1.1

MANUFACTURER:	SMARTRISE ENGINEERING
MODEL NUMBER:	SRH-2020
UNIT FUNCTION:	ELEVATOR CONTROLLER
SERIAL NUMBER:	N/A

DIMENSIONS (in)			WEIGHT (lb)	RES. FREQ. (Hz)		
DEPTH	WIDTH	HEIGHT		F-B	S-S	V
10	24	30	170	N/A	N/A	N/A

CODE & CRITERIA:	2019 CBC	ICC-ES AC156
-----------------------------	----------	--------------

TEST LABORATORY:	ENVIRONMENTAL TESTING LABORATORY
-------------------------	----------------------------------

REPORT & DATE:	SQ10-1111-01	August 17, 2011
---------------------------	--------------	-----------------

S _{DS} (g)	z/h	A _{FLX-H} (g)	A _{RIG-H} (g)	A _{FLX-V} (g)	A _{RIG-V} (g)
2.0	1	3.20	2.40	1.74	0.70
2.6	0				

IMPORTANCE FACTOR, I_p = 1.5
Unit was full of operating content during the shake table test. Unit maintained structural integrity and remained functional per manufacturer requirement after shake table test.

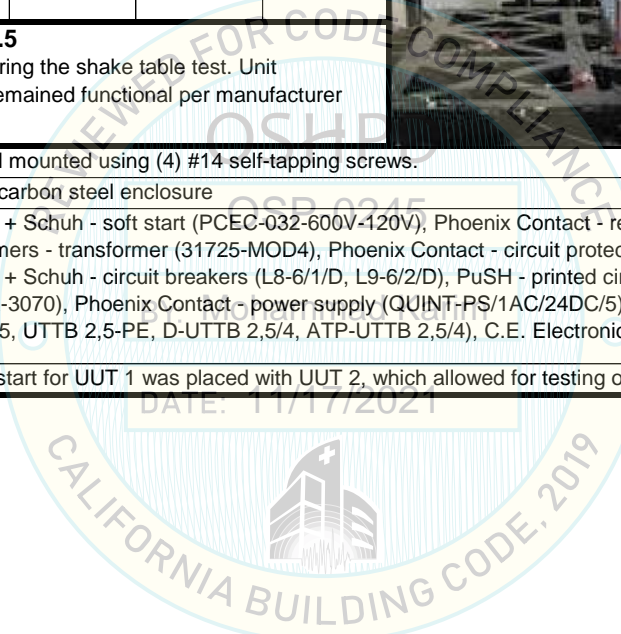


MOUNTING:	Rigid wall mounted using (4) #14 self-tapping screws.
------------------	---

CONSTRUCTION:	NEMA 1 carbon steel enclosure
----------------------	-------------------------------

SUBCOMPONENTS:	Sprecher + Schuh - soft start (PCEC-032-600V-120V), Phoenix Contact - relay (PSR-SCF-24UC/URM/2X21), Pacific Transformers - transformer (31725-MOD4), Phoenix Contact - circuit protection (UT 6-TMC M 1A, UT 6-TMC M 2A), Sprecher + Schuh - circuit breakers (L8-6/1/D, L9-6/2/D), PuSH - printed circuit boards (SR-3010, SR-2001, SR-3050, SR-3070), Phoenix Contact - power supply (QUINT-PS/1AC/24DC/5), Phoenix Contact - terminal blocks (UTT B 2,5, UTT B 2,5-PE, D-UTT B 2,5/4, ATP-UTT B 2,5/4), C.E. Electronics - PI driver (SEI001-X)
-----------------------	---

TESTING NOTES:	The soft start for UUT 1 was placed with UUT 2, which allowed for testing of both UUT 1 & 2 in the same enclosure.
-----------------------	--



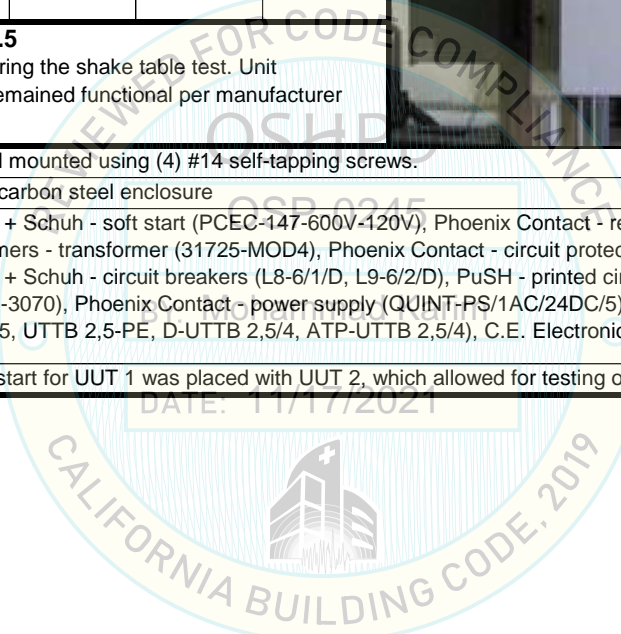
ATTACHMENT 2: UNIT UNDER TEST SUMMARIES

SPECIAL SEISMIC CERTIFICATION

UUT 2

DOCUMENT NO.: 16123CR1.1

MANUFACTURER:		SMARTRISE ENGINEERING				
MODEL NUMBER:		SRH-2040				
UNIT FUNCTION:		ELEVATOR CONTROLLER				
SERIAL NUMBER:		N/A				
DIMENSIONS (in)			WEIGHT (lb)	RES. FREQ. (Hz)		
DEPTH	WIDTH	HEIGHT		F-B	S-S	V
10	24	30	170	N/A	N/A	N/A
CODE & CRITERIA:		2019 CBC		ICC-ES AC156		
TEST LABORATORY:		ENVIRONMENTAL TESTING LABORATORY				
REPORT & DATE:		SQ10-1111-01		August 17, 2011		
S_{DS} (g)	z/h	A_{FLX-H} (g)	A_{RIG-H} (g)	A_{FLX-V} (g)	A_{RIG-V} (g)	
2.0	1	3.20	2.40	1.74	0.70	
2.6	0					
IMPORTANCE FACTOR, I_p = 1.5						
Unit was full of operating content during the shake table test. Unit maintained structural integrity and remained functional per manufacturer requirement after shake table test.						
MOUNTING:		Rigid wall mounted using (4) #14 self-tapping screws.				
CONSTRUCTION:		NEMA 1 carbon steel enclosure				
SUBCOMPONENTS:		Sprecher + Schuh - soft start (PCEC-147-600V-120V), Phoenix Contact - relay (PSR-SCF-24UC/URM/2X21), Pacific Transformers - transformer (31725-MOD4), Phoenix Contact - circuit protection (UT 6-TMC M 1A, UT 6-TMC M 2A), Sprecher + Schuh - circuit breakers (L8-6/1/D, L9-6/2/D), PuSH - printed circuit boards (SR-3010, SR-2001, SR-3050, SR-3070), Phoenix Contact - power supply (QUINT-PS/1AC/24DC/5), Phoenix Contact - terminal blocks (UTT B 2,5, UTT B 2,5-PE, D-UTT B 2,5/4, ATP-UTT B 2,5/4), C.E. Electronics - PI driver (SEI001-X)				
TESTING NOTES:		The soft start for UUT 1 was placed with UUT 2, which allowed for testing of both UUT 1 & 2 in the same enclosure.				



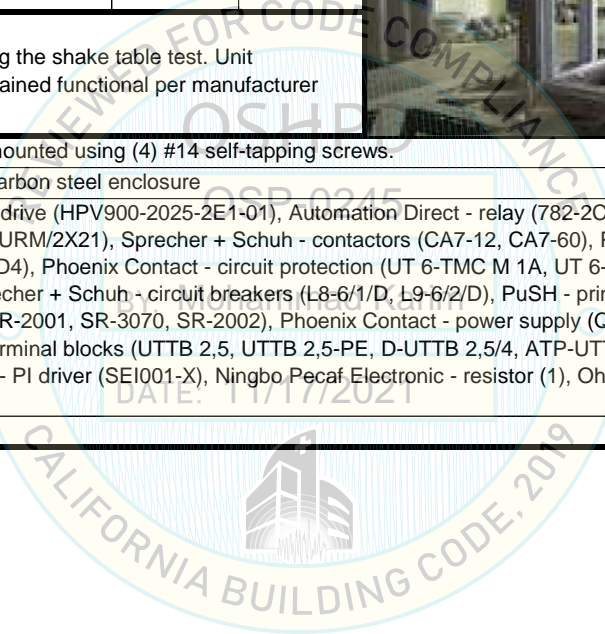
ATTACHMENT 2: UNIT UNDER TEST SUMMARIES

SPECIAL SEISMIC CERTIFICATION

UUT 3

DOCUMENT NO.: 16123CR1.1

MANUFACTURER:		SMARTRISE ENGINEERING				
MODEL NUMBER:		SRA-2010				
UNIT FUNCTION:		ELEVATOR CONTROLLER				
SERIAL NUMBER:		N/A				
DIMENSIONS (in)			WEIGHT (lb)	RES. FREQ. (Hz)		
DEPTH	WIDTH	HEIGHT		F-B	S-S	V
14	30	39	220	N/A	N/A	N/A
CODE & CRITERIA:		2019 CBC		ICC-ES AC156		
TEST LABORATORY:		ENVIRONMENTAL TESTING LABORATORY				
REPORT & DATE:		SQ10-1111-01		August 17, 2011		
S_{DS} (g)	z/h	A_{FLX-H} (g)	A_{RIG-H} (g)	A_{FLX-V} (g)	A_{RIG-V} (g)	
2.0	1	3.20	2.40	1.74	0.70	
2.6	0					
IMPORTANCE FACTOR, I_p = 1.5						
Unit was full of operating content during the shake table test. Unit maintained structural integrity and remained functional per manufacturer requirement after shake table test.						
MOUNTING:		Rigid wall mounted using (4) #14 self-tapping screws.				
CONSTRUCTION:		NEMA 12 carbon steel enclosure				
SUBCOMPONENTS:		Magnetek - drive (HPV900-2025-2E1-01), Automation Direct - relay (782-2C-24D), Phoenix Contact - relay (PSR-SCF-24UC/URM/2X21), Sprecher + Schuh - contactors (CA7-12, CA7-60), Pacific Transformers - transformer (31725-MOD4), Phoenix Contact - circuit protection (UT 6-TMC M 1A, UT 6-TMC M 2A, UT 6-TMC M 4A, UT 6-TMC M 6A), Sprecher + Schuh - circuit breakers (L8-6/1/D, L9-6/2/D), PuSH - printed circuit boards (SR-BU-B1, SR-3040, SR-3010, SR-2001, SR-3070, SR-2002), Phoenix Contact - power supply (QUINT-PS/1AC/24DC/5), Phoenix Contact - terminal blocks (UTTB 2,5, UTTB 2,5-PE, D-UTTB 2,5/4, ATP-UTTB 2,5/4, UT 35, UT 35-PE), C.E. Electronics - PI driver (SEI001-X), Ningbo Pecaf Electronic - resistor (1), Ohmite - resistor (L225J100E)				
TESTING NOTES:		N/A				



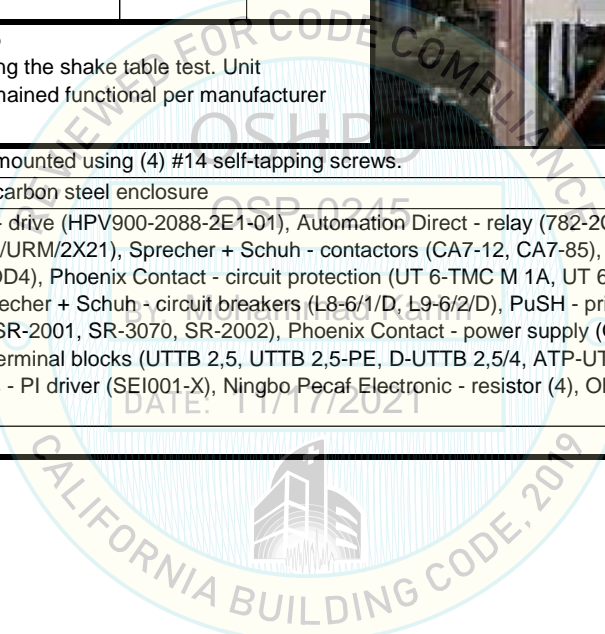
ATTACHMENT 2: UNIT UNDER TEST SUMMARIES

SPECIAL SEISMIC CERTIFICATION

UUT 4

DOCUMENT NO.: 16123CR1.1

MANUFACTURER:		SMARTRISE ENGINEERING				
MODEL NUMBER:		SRA-2030				
UNIT FUNCTION:		ELEVATOR CONTROLLER				
SERIAL NUMBER:		N/A				
DIMENSIONS (in)			WEIGHT (lb)	RES. FREQ. (Hz)		
DEPTH	WIDTH	HEIGHT		F-B	S-S	V
14	30	39	232	N/A	N/A	N/A
CODE & CRITERIA:		2019 CBC		ICC-ES AC156		
TEST LABORATORY:		ENVIRONMENTAL TESTING LABORATORY				
REPORT & DATE:		SQ10-1111-01		August 17, 2011		
S _{DS} (g)	z/h	A _{FLX-H} (g)	A _{RIG-H} (g)	A _{FLX-V} (g)	A _{RIG-V} (g)	
2.0	1	3.20	2.40	1.74	0.70	
2.6	0					
IMPORTANCE FACTOR, I_p = 1.5						
Unit was full of operating content during the shake table test. Unit maintained structural integrity and remained functional per manufacturer requirement after shake table test.						
MOUNTING:		Rigid wall mounted using (4) #14 self-tapping screws.				
CONSTRUCTION:		NEMA 12 carbon steel enclosure				
SUBCOMPONENTS:		Magnetek - drive (HPV900-2088-2E1-01), Automation Direct - relay (782-2C-24D), Phoenix Contact - relay (PSR-SCF-24UC/URM/2X21), Sprecher + Schuh - contactors (CA7-12, CA7-85), Pacific Transformers - transformer (31725-MOD4), Phoenix Contact - circuit protection (UT 6-TMC M 1A, UT 6-TMC M 2A, UT 6-TMC M 4A, UT 6-TMC M 6A), Sprecher + Schuh - circuit breakers (L8-6/1/D, L9-6/2/D), PuSH - printed circuit boards (SR-BU-B1, SR-3040, SR-3010, SR-2001, SR-3070, SR-2002), Phoenix Contact - power supply (QUINT-PS/1AC/24DC/5), Phoenix Contact - terminal blocks (UTTB 2,5, UTTB 2,5-PE, D-UTTB 2,5/4, ATP-UTTB 2,5/4, UT 35, UT 35-PE), C.E. Electronics - PI driver (SEI001-X), Ningbo Pecaf Electronic - resistor (4), Ohmite - resistor (L225J100E)				
TESTING NOTES:		N/A				



ATTACHMENT 2: UNIT UNDER TEST SUMMARIES

SPECIAL SEISMIC CERTIFICATION

UUT 5

DOCUMENT NO.: 16123CR1.1

MANUFACTURER:	SMARTRISE ENGINEERING
MODEL NUMBER:	SRA-4020
UNIT FUNCTION:	ELEVATOR CONTROLLER
SERIAL NUMBER:	N/A



DIMENSIONS (in)			WEIGHT (lb)	RES. FREQ. (Hz)		
DEPTH	WIDTH	HEIGHT		F-B	S-S	V
14	30	39	171	N/A	N/A	N/A

CODE & CRITERIA:	2019 CBC	ICC-ES AC156
-----------------------------	----------	--------------

TEST LABORATORY:	ENVIRONMENTAL TESTING LABORATORY
-------------------------	----------------------------------

REPORT & DATE:	SQ10-1111-02	February 7, 2012
---------------------------	--------------	------------------

S _{DS} (g)	z/h	A _{FLX-H} (g)	A _{RIG-H} (g)	A _{FLX-V} (g)	A _{RIG-V} (g)
2.0	1	3.20	2.40	1.74	0.70
2.6	0				

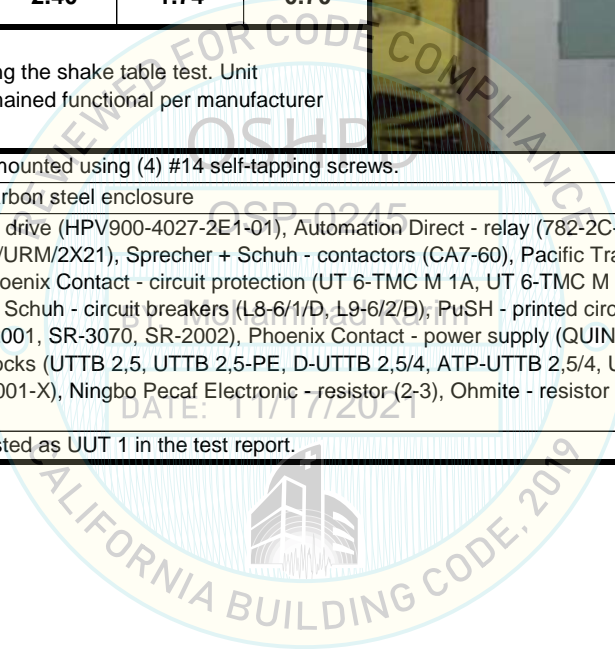
IMPORTANCE FACTOR, I_p = 1.5
Unit was full of operating content during the shake table test. Unit maintained structural integrity and remained functional per manufacturer requirement after shake table test.

MOUNTING:	Rigid wall mounted using (4) #14 self-tapping screws.
------------------	---

CONSTRUCTION:	NEMA 1 carbon steel enclosure
----------------------	-------------------------------

SUBCOMPONENTS:	Magnetek - drive (HPV900-4027-2E1-01), Automation Direct - relay (782-2C-24D), Phoenix Contact - relay (PSR-SCF-24UC/URM/2X21), Sprecher + Schuh - contactors (CA7-60), Pacific Transformers - transformer (31725-MOD4), Phoenix Contact - circuit protection (UT 6-TMC M 1A, UT 6-TMC M 2A, UT 6-TMC M 4A, UT 6-TMC M 6A), Sprecher + Schuh - circuit breakers (L8-6/1/D, L9-6/2/D), PuSH - printed circuit boards (SR-BU-B1, SR-3040, SR-3010, SR-2001, SR-3070, SR-2002), Phoenix Contact - power supply (QUINT-PS/1AC/24DC/5), Phoenix Contact - terminal blocks (UTT8 2,5, UTT8 2,5-PE, D-UTT8 2,5/4, ATP-UTT8 2,5/4, UT 35, UT 35-PE), C.E. Electronics - PI driver (SEI001-X), Ningbo Pecaf Electronic - resistor (2-3), Ohmite - resistor (L225J100E)
-----------------------	---

TESTING NOTES:	UUT 5 is listed as UUT 1 in the test report.
-----------------------	--



ATTACHMENT 2: UNIT UNDER TEST SUMMARIES

SPECIAL SEISMIC CERTIFICATION

UUT 6

DOCUMENT NO.: 16123CR1.1

MANUFACTURER:	SMARTRISE ENGINEERING
MODEL NUMBER:	SRA-4060
UNIT FUNCTION:	ELEVATOR CONTROLLER
SERIAL NUMBER:	N/A



DIMENSIONS (in)			WEIGHT (lb)	RES. FREQ. (Hz)		
DEPTH	WIDTH	HEIGHT		F-B	S-S	V
14	30	39	216	N/A	N/A	N/A

CODE & CRITERIA:	2019 CBC	ICC-ES AC156
-----------------------------	----------	--------------

TEST LABORATORY:	ENVIRONMENTAL TESTING LABORATORY
-------------------------	----------------------------------

REPORT & DATE:	SQ10-1111-02	February 7, 2012
---------------------------	--------------	------------------

S _{DS} (g)	z/h	A _{FLX-H} (g)	A _{RIG-H} (g)	A _{FLX-V} (g)	A _{RIG-V} (g)
2.0	1	3.20	2.40	1.74	0.70
2.6	0				

IMPORTANCE FACTOR, I_p = 1.5
 Unit was full of operating content during the shake table test. Unit maintained structural integrity and remained functional per manufacturer requirement after shake table test.

MOUNTING:	Rigid wall mounted using (4) #14 self-tapping screws.
------------------	---

CONSTRUCTION:	NEMA 1 carbon steel enclosure
----------------------	-------------------------------

SUBCOMPONENTS:	Magnetek - drive (HPV900-4065-2E1-01), Automation Direct - relay (782-2C-24D), Phoenix Contact - relay (PSR-SCF-24UC/URM/2X21), Sprecher + Schuh - contactors (CA7-72), Pacific Transformers - transformer (31725-MOD4), Phoenix Contact - circuit protection (UT 6-TMC M 1A, UT 6-TMC M 2A, UT 6-TMC M 4A, UT 6-TMC M 6A), Sprecher + Schuh - circuit breakers (L8-6/1/D, L9-6/2/D), PuSH - printed circuit boards (SR-BU-B1, SR-3040, SR-3010, SR-2001, SR-3070, SR-2002), Phoenix Contact - power supply (QUINT-PS/1AC/24DC/5), Phoenix Contact - terminal blocks (UTT B 2,5, UTT B 2,5-PE, D-UTT B 2,5/4, ATP-UTT B 2,5/4, UT 35, UT 35-PE), C.E. Electronics - PI driver (SEI001-X), Ohmite - resistor (L225J100E)
-----------------------	---

TESTING NOTES:	Separation of the top latch occurred during testing. To resolve the anomaly, the latch used in UUTs 9 & 10 will be used on production units in place of the tested latch.
-----------------------	---

ATTACHMENT 2: UNIT UNDER TEST SUMMARIES

SPECIAL SEISMIC CERTIFICATION

UUT 7 - WALL MOUNT

DOCUMENT NO.: 16123CR1.1

MANUFACTURER:		SMARTRISE ENGINEERING				
MODEL NUMBER:		SRA-4075				
UNIT FUNCTION:		ELEVATOR CONTROLLER				
SERIAL NUMBER:		N/A				
DIMENSIONS (in)			WEIGHT (lb)	RES. FREQ. (Hz)		
DEPTH	WIDTH	HEIGHT		F-B	S-S	V
16	36	48	450	N/A	N/A	N/A
CODE & CRITERIA:		2019 CBC		ICC-ES AC156		
TEST LABORATORY:		PEER - BERKELEY				
REPORT & DATE:		16123TR1		April 6, 2017		
S_{DS} (g)	z/h	A_{FLX-H} (g)	A_{RIG-H} (g)	A_{FLX-V} (g)	A_{RIG-V} (g)	
2.0	1	3.20	2.40	1.74	0.70	
2.6	0					
IMPORTANCE FACTOR, I_p = 1.5						
Unit was full of operating content during the shake table test. Unit maintained structural integrity and remained functional per manufacturer requirement after shake table test.						
MOUNTING:		Rigid wall mounted using (4) 1/4" Grade 8 bolts.				
CONSTRUCTION:		NEMA 4 carbon steel enclosure				
SUBCOMPONENTS:		Magnetek - drive (HPV900-4096-2E1-01), Automation Direct - relay (782-2C-24D), Phoenix Contact - relay (PSR-SCF-24UC/URM/2X21), Sprecher + Schuh - contactors (CA6-210), Pacific Transformers - transformer (31725-MOD4), Phoenix Contact - circuit protection (UT 6-TMC M 1A, UT 6-TMC M 2A, UT 6-TMC M 4A, UT 6-TMC M 10A), Sprecher + Schuh - circuit breakers (L9-3/2/D), PuSH - printed circuit boards (SR-BU-B1, SR-3010, SR-2001, SR-3070, SR-2002, SR-3090), Smartrise - printed circuit board (8200-300 - Smartview 2.0), Phoenix Contact - power supply (QUINT-PS/1AC/24DC/5), Phoenix Contact - terminal blocks (UTTB 2,5, UTTB 2,5-PE, D-UTTB 2,5/4, ATP-UTTB 2,5/4), KEB - motor choke (15Z1F04-1005), KEB - line reactor (17Z1B05-1002), Ningbo Pecaf Electronic - resistor (large 6), Ohmite - resistor (L225J100E), Vishay Semiconductors - diode bridge (36MB160A), TE Connectivity - AC filter (16WGF1), Thermal Edge - AC unit (CS-011-126-04-XXB-DRY CONTACT), Smartrise - resets (Traction loss Reset, Governor Reset Box)				
TESTING NOTES:		The legs were not attached to the wall or floor. They were fully supported by the UUT.				



ATTACHMENT 2: UNIT UNDER TEST SUMMARIES

SPECIAL SEISMIC CERTIFICATION

UUT 7 - FLOOR MOUNT

DOCUMENT NO.: 16123CR1.1

MANUFACTURER:		SMARTRISE ENGINEERING				
MODEL NUMBER:		SRA-4075				
UNIT FUNCTION:		ELEVATOR CONTROLLER				
SERIAL NUMBER:		N/A				
DIMENSIONS (in)			WEIGHT (lb)	RES. FREQ. (Hz)		
DEPTH	WIDTH	HEIGHT		F-B	S-S	V
16	36	60	450	7.2	20.9	14.7
CODE & CRITERIA:		2019 CBC		ICC-ES AC156		
TEST LABORATORY:		NTS - SILICON VALLEY				
REPORT & DATE:		16123TR2		May 26, 2017		
S_{DS} (g)	z/h	A_{FLX-H} (g)	A_{RIG-H} (g)	A_{FLX-V} (g)	A_{RIG-V} (g)	
2.0	1	3.20	2.40	1.74	0.70	
2.6	0					
IMPORTANCE FACTOR, I_p = 1.5						
Unit was full of operating content during the shake table test. Unit maintained structural integrity and remained functional per manufacturer requirement after shake table test.						
MOUNTING:		Rigid floor mounted using (8) 3/8" Grade 8 bolts.				
CONSTRUCTION:		NEMA 4 carbon steel enclosure				
SUBCOMPONENTS:		See above. Identical subcomponent list to wall mount test.				
TESTING NOTES:		Tested with upgraded legs. Enhancements will be incorporated into production units.				



BY: Mohammad Karim

DATE: 11/17/2021



ATTACHMENT 2: UNIT UNDER TEST SUMMARIES

SPECIAL SEISMIC CERTIFICATION

UUT 8 - WALL MOUNT

DOCUMENT NO.: 16123CR1.1

MANUFACTURER:	SMARTRISE ENGINEERING
MODEL NUMBER:	SRA-2030
UNIT FUNCTION:	ELEVATOR CONTROLLER
SERIAL NUMBER:	N/A

DIMENSIONS (in)			WEIGHT (lb)	RES. FREQ. (Hz)		
DEPTH	WIDTH	HEIGHT		F-B	S-S	V
16	36	48	400	N/A	N/A	N/A

CODE & CRITERIA:	2019 CBC	ICC-ES AC156
-----------------------------	----------	--------------

TEST LABORATORY:	PEER - BERKELEY
-------------------------	-----------------

REPORT & DATE:	16123TR1	April 6, 2017
---------------------------	----------	---------------

S _{DS} (g)	z/h	A _{FLX-H} (g)	A _{RIG-H} (g)	A _{FLX-V} (g)	A _{RIG-V} (g)
2.0	1	3.20	2.40	1.74	0.70
2.6	0				

IMPORTANCE FACTOR, I_p = 1.5
Unit was full of operating content during the shake table test. Unit maintained structural integrity and remained functional per manufacturer requirement after shake table test.



MOUNTING:	Rigid wall mounted using (4) 1/4" Grade 8 bolts.
------------------	--

CONSTRUCTION:	NEMA 4X stainless steel enclosure
----------------------	-----------------------------------

SUBCOMPONENTS:	Magnetek - drives (HPV900-2025-2E1-01, RU2A0014FAA, RU2A0035FAA), Reynolds and Reynolds - battery resque (RB2-240), Automation Direct - relay (782-2C-24D), Phoenix Contact - relays (PLC-RSC-24DC/21, PSR-SCF-24UC/URM/2X21), Sprecher + Schuh - contactor (CA7-97), Phoenix Contact - circuit protection (UT 6-TMC M 1A, UT 6-TMC M 2A), Sprecher + Schuh - circuit breaker (LL9-6/2/D), PuSH - printed circuit boards (SR-BU-B1, SR-3010, SR-2001, SR-3070, SR-3080, SR-2002), Smartrise - printed circuit board (8200-300 - Smartview 2.0), Phoenix Contact - power supply (QUINT-PS/1AC/24DC/5), Phoenix Contact - terminal blocks (UTTB 2,5, UTTB 2,5-PE, D-UTTB 2,5/4, ATP-UTTB 2,5/4), MTE - line reactors (RL-04501, RL-08001), Ningbo Pecaf Electronic - resistor (2-3), Thermal Edge - AC unit (CS-011-126-4X-XBX-DRY CONTACT)
-----------------------	---

TESTING NOTES:	The legs were not attached to the wall or floor. They were fully supported by the UUT.
-----------------------	--

UUT 8 - FLOOR MOUNT

MANUFACTURER:	SMARTRISE ENGINEERING
MODEL NUMBER:	SRA-2030
UNIT FUNCTION:	ELEVATOR CONTROLLER
SERIAL NUMBER:	N/A

DIMENSIONS (in)			WEIGHT (lb)	RES. FREQ. (Hz)		
DEPTH	WIDTH	HEIGHT		F-B	S-S	V
16	36	60	400	9.6	17.3	>33

CODE & CRITERIA:	2019 CBC	ICC-ES AC156
-----------------------------	----------	--------------

TEST LABORATORY:	NTS - SILICON VALLEY
-------------------------	----------------------

REPORT & DATE:	16123TR2	May 26, 2017
---------------------------	----------	--------------

S _{DS} (g)	z/h	A _{FLX-H} (g)	A _{RIG-H} (g)	A _{FLX-V} (g)	A _{RIG-V} (g)
2.0	1	3.20	2.40	1.74	0.70
2.6	0				

IMPORTANCE FACTOR, I_p = 1.5
Unit was full of operating content during the shake table test. Unit maintained structural integrity and remained functional per manufacturer requirement after shake table test.



MOUNTING:	Rigid floor mounted using (8) 3/8" Grade 8 bolts.
------------------	---

CONSTRUCTION:	NEMA 4X stainless steel enclosure
----------------------	-----------------------------------

SUBCOMPONENTS:	See above. Identical subcomponent list to wall mount test.
-----------------------	--

TESTING NOTES:	Tested with upgraded legs. Enhancements will be incorporated into production units.
-----------------------	---

ATTACHMENT 2: UNIT UNDER TEST SUMMARIES

SPECIAL SEISMIC CERTIFICATION

UUT 9 - WALL MOUNT

DOCUMENT NO.: 16123CR1.1

MANUFACTURER:	SMARTRISE ENGINEERING
MODEL NUMBER:	SRD-060
UNIT FUNCTION:	ELEVATOR CONTROLLER
SERIAL NUMBER:	N/A

DIMENSIONS (in)			WEIGHT (lb)	RES. FREQ. (Hz)		
DEPTH	WIDTH	HEIGHT		F-B	S-S	V
16	36	48	324	N/A	N/A	N/A

CODE & CRITERIA:	2019 CBC	ICC-ES AC156
-----------------------------	----------	--------------

TEST LABORATORY:	PEER - BERKELEY
-------------------------	-----------------

REPORT & DATE:	16123TR1	April 6, 2017
---------------------------	----------	---------------

S _{DS} (g)	z/h	A _{FLX-H} (g)	A _{RIG-H} (g)	A _{FLX-V} (g)	A _{RIG-V} (g)
2.0	1	3.20	2.40	1.74	0.70
2.6	0				

IMPORTANCE FACTOR, I_p = 1.5
Unit was full of operating content during the shake table test. Unit maintained structural integrity and remained functional per manufacturer requirement after shake table test.

MOUNTING:	Rigid wall mounted using (4) 1/4" Grade 8 bolts.
------------------	--

CONSTRUCTION:	NEMA 1 carbon steel enclosure
----------------------	-------------------------------

SUBCOMPONENTS:	Magnetek - drive (53ST125-3A00), Automation Direct - relay (782-2C-24D), Phoenix Contact - relay (PSR-SCF-24UC/URM/2X21), ABB - contactor (EHDB220C-1L), Pacific Transformers - transformer (31725-MOD4), Phoenix Contact - circuit protection (UT 6-TMC M 1A, UT 6-TMC M 2A), Sprecher + Schuh - circuit breakers (L9-6/2/D), PuSH - printed circuit boards (SR-3040, SR-3010, SR-2001, SR-3070, SR-2002, SR-TT25A-MOD1), Phoenix Contact - power supply (QUINT-PS/1AC/24DC/5), Phoenix Contact - terminal blocks (UTTB 2,5, UTTB 2,5-PE, D-UTTB 2,5/4, ATP-UTTB 2,5/4, UT 35-PE, USLKG 95, UKH 95), KEB - motor choke (21Z1F04-1005), Emotive - PI driver (MX003DPOX-SM), Ohmite - resistor (L225J100E), Vishay Semiconductors - diode bridge (36MB160A), TE Connectivity - AC filter (16WGF1)
-----------------------	--

TESTING NOTES:	The legs were not attached to the wall or floor. They were fully supported by the UUT.
-----------------------	--



UUT 9 - FLOOR MOUNT

MANUFACTURER:	SMARTRISE ENGINEERING
MODEL NUMBER:	SRD-060
UNIT FUNCTION:	ELEVATOR CONTROLLER
SERIAL NUMBER:	N/A

DIMENSIONS (in)			WEIGHT (lb)	RES. FREQ. (Hz)		
DEPTH	WIDTH	HEIGHT		F-B	S-S	V
16	36	60	324	8.1	10.4	>33

CODE & CRITERIA:	2019 CBC	ICC-ES AC156
-----------------------------	----------	--------------

TEST LABORATORY:	NTS - SILICON VALLEY
-------------------------	----------------------

REPORT & DATE:	16123TR2	May 26, 2017
---------------------------	----------	--------------

S _{DS} (g)	z/h	A _{FLX-H} (g)	A _{RIG-H} (g)	A _{FLX-V} (g)	A _{RIG-V} (g)
2.0	1	3.20	2.40	1.74	0.70
2.6	0				

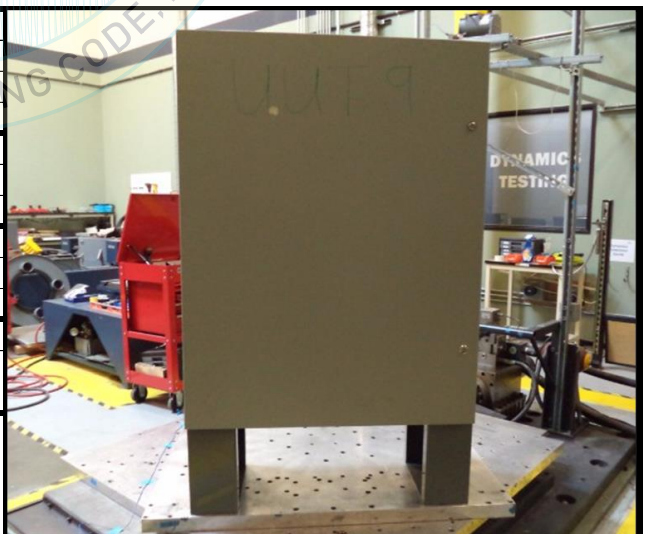
IMPORTANCE FACTOR, I_p = 1.5
Unit was full of operating content during the shake table test. Unit maintained structural integrity and remained functional per manufacturer requirement after shake table test.

MOUNTING:	Rigid floor mounted using (8) 3/8" Grade 8 bolts.
------------------	---

CONSTRUCTION:	NEMA 1 carbon steel enclosure
----------------------	-------------------------------

SUBCOMPONENTS:	See above. Identical subcomponent list to wall mount test.
-----------------------	--

TESTING NOTES:	Tested with upgraded legs. Enhancements will be incorporated into production units.
-----------------------	---



ATTACHMENT 2: UNIT UNDER TEST SUMMARIES

SPECIAL SEISMIC CERTIFICATION

UUT 10 - WALL MOUNT

DOCUMENT NO.: 16123CR1.1

MANUFACTURER:		SMARTRISE ENGINEERING				
MODEL NUMBER:		SRD-125				
UNIT FUNCTION:		ELEVATOR CONTROLLER				
SERIAL NUMBER:		N/A				
DIMENSIONS (in)			WEIGHT (lb)	RES. FREQ. (Hz)		
DEPTH	WIDTH	HEIGHT		F-B	S-S	V
16	36	48	339	N/A	N/A	N/A
CODE & CRITERIA:		2019 CBC		ICC-ES AC156		
TEST LABORATORY:		PEER - BERKELEY				
REPORT & DATE:		16123TR1		April 6, 2017		
S _{DS} (g)	z/h	A _{FLX-H} (g)	A _{RIG-H} (g)	A _{FLX-V} (g)	A _{RIG-V} (g)	
2.0	1	3.20	2.40	1.74	0.70	
2.6	0					
IMPORTANCE FACTOR, I_p = 1.5						
Unit was full of operating content during the shake table test. Unit maintained structural integrity and remained functional per manufacturer requirement after shake table test.						
MOUNTING:		Rigid wall mounted using (4) 1/4" Grade 8 bolts.				
CONSTRUCTION:		NEMA 1 carbon steel enclosure				
SUBCOMPONENTS:		Magnetek - drive (53ST030-3A00), Automation Direct - relay (782-2C-24D), Phoenix Contact - relay (PSR-SCF-24UC/URM/2X21), Macromatic - relay (PCPU), ABB - contactor (EHDB280C-1L), Phoenix Contact - circuit protection (UT 6-TMC M 1A, UT 6-TMC M 2A), Sprecher + Schuh - circuit breakers (L9-6/2/D), PuSH - printed circuit boards (SR-3010, SR-2001, SR-3070, SR-2002, SR-2011), Phoenix Contact - power supply (QUINT-PS/1AC/24DC/5), Phoenix Contact - terminal blocks (UTTB 2,5, UTTB 2,5-PE, D-UTTB 2,5/4, ATP-UTTB 2,5/4), KEB - line reactor (23Z1B05-1002), MTE - line reactor (RL-08002), C.E. Electronics - PI driver (SEI001-X), Hubbell - GFCI outlet (DRUBGFI15), Hoffman Enclosures, Inc - light (LF120V15), Ohmite - resistor (L225J750E), GrayBar - fan (22210)				
TESTING NOTES:		The legs were not attached to the wall or floor. They were fully supported by the UUT.				



UUT 10 - FLOOR MOUNT

MANUFACTURER:		SMARTRISE ENGINEERING				
MODEL NUMBER:		SRD-125				
UNIT FUNCTION:		ELEVATOR CONTROLLER				
SERIAL NUMBER:		N/A				
DIMENSIONS (in)			WEIGHT (lb)	RES. FREQ. (Hz)		
DEPTH	WIDTH	HEIGHT		F-B	S-S	V
16	36	60	339	7.7	16.4	>33
CODE & CRITERIA:		2019 CBC		ICC-ES AC156		
TEST LABORATORY:		NTS - SILICON VALLEY				
REPORT & DATE:		16123TR2		May 30, 2017		
S _{DS} (g)	z/h	A _{FLX-H} (g)	A _{RIG-H} (g)	A _{FLX-V} (g)	A _{RIG-V} (g)	
2.0	1	3.20	2.40	1.74	0.70	
2.6	0					
IMPORTANCE FACTOR, I_p = 1.5						
Unit was full of operating content during the shake table test. Unit maintained structural integrity and remained functional per manufacturer requirement after shake table test.						
MOUNTING:		Rigid floor mounted using (8) 3/8" Grade 8 bolts.				
CONSTRUCTION:		NEMA 1 carbon steel enclosure				
SUBCOMPONENTS:		See above. Identical subcomponent list to wall mount test.				
TESTING NOTES:		Tested with upgraded legs. Enhancements will be incorporated into production units.				

