



**OFFICE OF STATEWIDE HEALTH PLANNING AND DEVELOPMENT
FACILITIES DEVELOPMENT DIVISION**

**APPLICATION FOR OSHPD SPECIAL SEISMIC
CERTIFICATION PREAPPROVAL (OSP)**

OFFICE USE ONLY

APPLICATION #: OSP-0439

OSHPD Special Seismic Certification Preapproval (OSP)

Type: New Renewal

Manufacturer Information

Manufacturer: SIEMENS MEDICAL SOLUTIONS USA, Inc.

Manufacturer's Technical Representative: Michael Dulude

Mailing Address: 51 Valley Stream Parkway, Malvern, PA 19355

Telephone: On File Email: On File

Product Information

Product Name: CT Systems

Product Type: NA

Product Model Number: Biograph mCT, Biograph mCT Flow, Biograph mCT Flow Edge, Biograph Horizon, Biograph Vision 600; Biograph Vision 600 Edge, Biograph Vision 450; Biograph Vision 450 Edge

General Description: Multiple component systems for the provision of combined X-Ray Computed Tomography (CT) and Positron Emission Tomography (PET) medical imaging. Special Seismic Certification is limited to components listed in Attachment 1, Table 1 for functions related to CT imaging.

Mounting Description: Rigid, See Certified Product Tables

Tested Seismic Enhancements: Seismic enhancements made to the test units and/or modifications required to address anomalies during the tests shall be incorporated into the production units.

Applicant Information

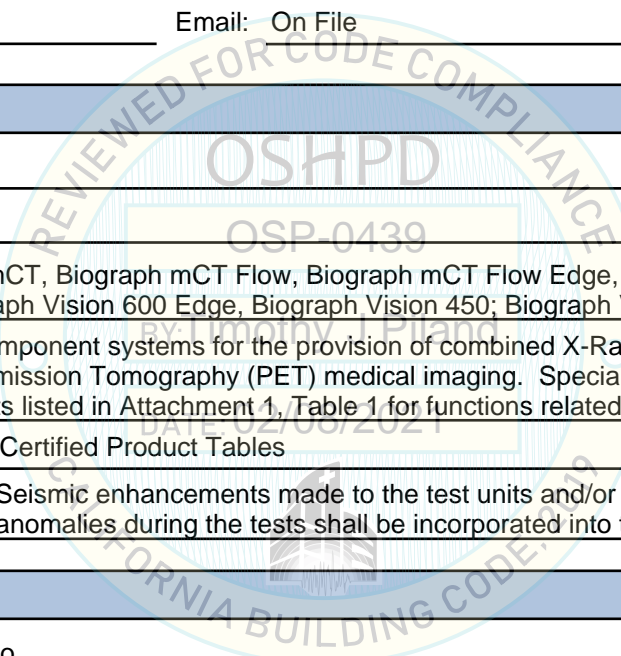
Applicant Company Name: EASE Co.

Contact Person: Jonathan Roberson

Mailing Address: 5877 Pine Ave Suite 210, Chino Hills, CA 91709

Telephone: (909) 606-7622 Email: j.roberson@easeco.com

Title: Principal Engineer





**OFFICE OF STATEWIDE HEALTH PLANNING AND DEVELOPMENT
FACILITIES DEVELOPMENT DIVISION**

California Licensed Structural Engineer Responsible for the Engineering and Test Report(s)

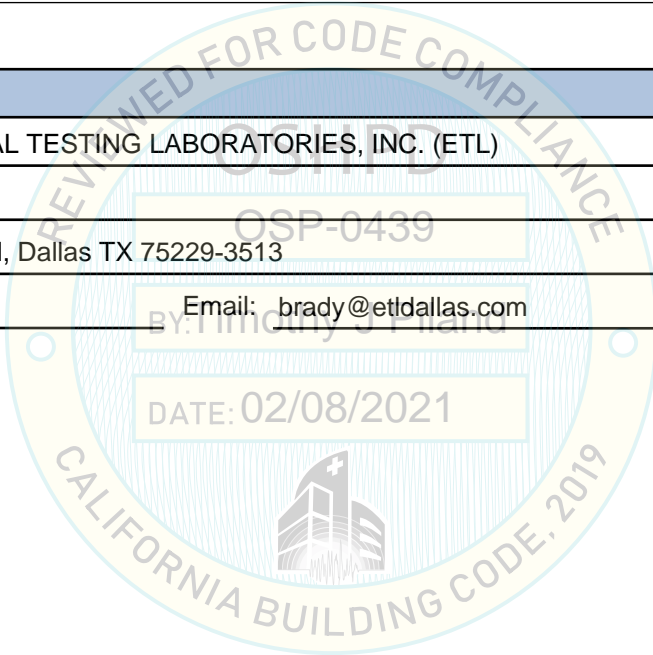
Company Name: EASE
Name: Jonathan Roberson California License Number: S4197
Mailing Address: 5877 Pine Ave., Suite 210, Chino Hills, CA 91709
Telephone: (951) 295-1892 Email: jon@EASECo.com

Certification Method

GR-63-Core ICC-ES AC156 IEEE 344 IEEE 693 NEBS 3
 Other (Please Specify): _____

Testing Laboratory

Company Name: ENVIRONMENTAL TESTING LABORATORIES, INC. (ETL)
Contact Person: Brady Richard
Mailing Address: 11034 Indian Trail, Dallas TX 75229-3513
Telephone: (972) 247-9657 Email: brady@etldallas.com





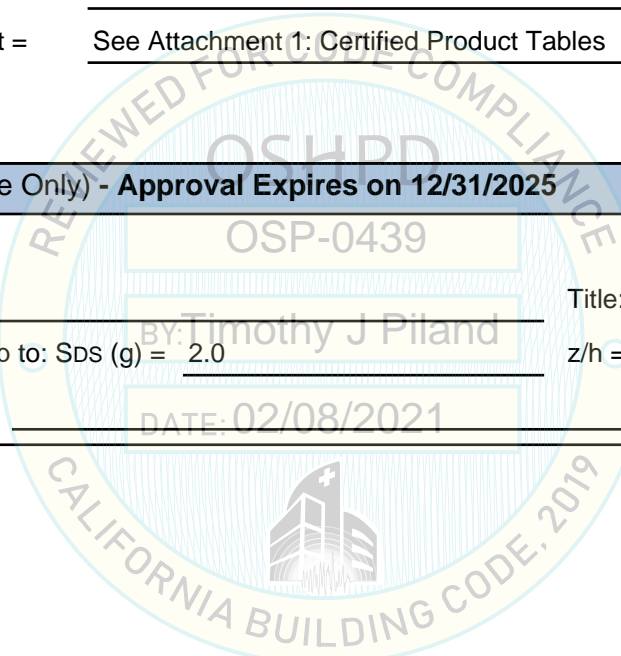
**OFFICE OF STATEWIDE HEALTH PLANNING AND DEVELOPMENT
FACILITIES DEVELOPMENT DIVISION**

Seismic Parameters

Design Basis of Equipment or Components (F_p/W_p) =	See Attachment 1: Certified Product Tables
SDS (Design spectral response acceleration at short period, g) =	2.0
a_p (Amplification factor) =	See Attachment 1: Certified Product Tables
R_p (Response modification factor) =	See Attachment 1: Certified Product Tables
Ω_0 (System overstrength factor) =	2.0
I_p (Importance factor) =	1.5
z/h (Height ratio factor) =	1
Natural frequencies (Hz) =	See Attachment 2
Overall dimensions and weight =	See Attachment 1: Certified Product Tables

OSHPD Approval (For Office Use Only) - Approval Expires on 12/31/2025

Date:	<u>2/8/2021</u>	
Name:	<u>Timothy Piland</u>	Title: <u>Senior Structural Engineer</u>
Special Seismic Certification Valid Up to: SDS (g) =	<u>2.0</u>	$z/h =$ <u>1</u>
Condition of Approval (if applicable):	<u>DATE: 02/08/2021</u>	



ATTACHMENT 1: CERTIFIED PRODUCT TABLES

TABLE 1: BIOGRAPH VISION FAMILY

System Manufacturer		SIEMENS MEDICAL SOLUTIONS USA, INC.												
System		BIOGRAPH Vision 450 BIOGRAPH Vision 450 Edge					BIOGRAPH Vision 600 BIOGRAPH Vision 600 Edge							
COMPONENT	PART NO.	APPROX. DIMENSIONS (IN.)			MAX. WT. (LB.)	MOUNT	BASIS ^[1]	F _P /W _P	S _{Ds}	z/h	a _P	R _P	Ω ₀	
		W	D	H										
PET-CT GANTRY														
Biograph Vision 600 Edge ^{[8][10]}	10749672	92.3	53.5	80.2	6701 ^[9]	Floor	UUT D1817-1	2.40	2.0	1	1	1 ½	2	
Asm PET Gantry, Vision 600 (8 ring)														
Definition Edge CT Gantry for PET														
Biograph Vision 600 ^{[8][10]}	10749670	92.3	53.5	80.2	6701 ^[9]	Floor	INT	2.40	2.0	1	1	1 ½	2	
Asm PET Gantry, Vision 600 (8 ring)														
Definition AS 64 CT Gantry for PET														
Biograph Vision 450 Edge ^{[8][10]}	10749671	92.3	52.8	80.1	6639 ^[9]	Floor	INT	2.40	2.0	1	1	1 ½	2	
Asm PET Gantry, Vision 450 (6 ring)														
Definition Edge CT Gantry for PET														
Biograph Vision 450 (6 Ring/AS64) ^{[8][10]}	10749669	92.3	52.8	80.1	6639 ^[9]	Floor	UUT E1926-1	2.40	2.0	1	1	1 ½	2	
6-Ring PET Gantry														
Definition AS 64 CT Gantry for PET														
PATIENT TABLES														
mCT Patient Handling System ^{[5][6]}	10529199	16	148	46	1560 ^[2]	Floor	UUT-2	2.40	2.0	1	1	1 ½	2	
mCT Patient Handling System (Acadia, NEO V Control Rack) ^{[5][6]}	10749470	16	148	46	1560 ^[2]	Floor	UUT C1734-1	2.40	2.0	1	1	1 ½	2	
POWER DISTRIBUTION														
Vision cPDU	10749598	21.7	35.4	66.3	951	Floor	UUT D1817-3	1.44	2.0	1	1	2 ½	2	
Power Distribution Cabinet (PDC)	08366465	35.4	27.2	76.8	1231	Wall/Floor	UUT B1614-8	1.44	2.0	1	1	2 ½	2	
Power Distribution Cabinet (PDC) w/ Cable Management Rack	08366465 10530286	35.4	32.2	76.8	1326 ^[11]	Wall/Floor	UUT E1926-2	1.44	2.0	1	1	2 ½	2	
USER INTERFACE														
Image Control System (ICS) Tower 13E	11062028	6.9	16.5	15.1	26	Floor	UUT D1817-4	1.44	2.0	1	1	2 ½	2	
Image Reconstruction System (IRS) 4 B Configuration mx4b	10890634	7	26.2	20	58	Floor	UUT-B3	1.44	2.0	1	1	2 ½	2	

Table continues next page

ATTACHMENT 1: CERTIFIED PRODUCT TABLES

TABLE 1: BIOGRAPH VISION FAMILY

<i>System Manufacturer</i>		SIEMENS MEDICAL SOLUTIONS USA, INC.															
<i>System</i>		BIOGRAPH Vision 450				BIOGRAPH Vision 600				BIOGRAPH Vision 450 Edge				BIOGRAPH Vision 600 Edge			
COMPONENT	PART NO.	APPROX. DIMENSIONS (IN.)			MAX. WT. (LB.)	MOUNT	BASIS ^[1]	F _P /W _P	S _{Ds}	z/h	a _P	R _P	Ω ₀				
		W	D	H													
Image Reconstruction System (IRS) 4 C Configuration mx4c	10890635	7	26.2	20	53	Floor	UUT-B7	1.44	2.0	1	1	2 ½	2				
Image Reconstruction System (IRS) 4 D Configuration mx4d	10890636	7	26.2	20	61	Floor	UUT-B4	1.44	2.0	1	1	2 ½	2				
Image Reconstruction System (IRS) mx5b	10590111	8.5	25.5	17.5	62	Floor	UUT E1926-3	1.44	2.0	1	1	2 ½	2				
Image Reconstruction System (IRS) mx5c	10590112	8.5	25.5	17.5	57	Floor	UUT E1926-4	1.44	2.0	1	1	2 ½	2				
19" LCD Monitor, DSC1913-D	10656056	16.5	8.3	16.1/18.2	17.5	Rigid Base	UUT-B5	1.44	2	1	1	2 ½	2				
COOLING SYSTEM																	
ASM, CWC Cabinet	10769716	21.7	35.3	66.0	446	Floor	UUT D1817-2	1.44	2.0	1	1	2 ½	2				
<i>Mount</i>	<p>FLOOR (RIGID BASE): a free-standing, base mounted condition with the component rigidly attached to a supporting structure and no lateral support above the base.</p> <p>WALL/FLOOR (RIGID BASE): a base mounted condition with the component rigidly attached to a supporting structure and additional support at the top to an adjacent wall.</p>																
<i>Notes</i>	<p>1. BASIS:</p> <ul style="list-style-type: none"> • UUT#: Indicates that a test specimen matching these characteristics was tested as part of this testing program. • SAME: Model is physically, mechanically & electrically the same as test specimen. Difference is limited to model number, color, software and/or GE manufacturing location. • INT (Interpolate/Extrapolate): indicates a model that was not specifically tested, and by which seismic certification is established through evaluation of testing of other, similar models in the product line <p>2. Patient Bed weight includes all listed options but excludes 415 lb. simulated patient load present during testing and 652 lb. mounting plate, which is part of the Seismic Damper Kit.</p> <p>3. All components in table are manufactured by Siemens Healthcare unless otherwise noted.</p> <p>4. Special Seismic Certification limited to CT imaging only.</p> <p>5. Requires use of Cover Set (P/N: 10749871, 10528539 or 10751077), and Cover Hardware Kit (P/N: 10250116).</p> <p>6. Requires use of Siemens Seismic Damper Kits (P/N:10506201 and 10506217), and Seismic Install Kit – mCT: (P/N: 10504127 and 10251356) or equivalent.</p> <p>7. NOT USED.</p> <p>8. Requires use of Seismic Plates (P/N 10504127)</p> <p>9. Gantry weight include 490lb Seismic Plates</p> <p>10. Requires use of Seismic Install Kit, 10750045.</p> <p>11. Weight includes cable management rack (42 LB) and weight of cables (126 LB).</p>																

ATTACHMENT 1: CERTIFIED PRODUCT TABLES

TABLE 2: BIOGRAPH HORIZON FAMILY

System Manufacturer		SIEMENS MEDICAL SOLUTIONS USA, INC.												
System		BIOGRAPH Horizon 3-Ring BIOGRAPH Horizon 4-Ring PET/CT												
COMPONENT	PART NO.	APPROX. DIMENSIONS (IN.)			MAX. WT. (LB.)	MOUNT	BASIS ^[1]	F _p /W _p	S _{ds}	z/h	a _p	R _p	Ω ₀	
		W	D	H										
PET-CT GANTRY														
Biograph Horizon PET/CT Gantry ^[9]	10532746					Floor	UUT-A1	2.40	2.0	1	1	1 ½	2	
Horizon 3 Ring PET Gantry	10532494	92.3	11.3	80.2	2302									
Perspective CT Gantry for PET	10891666	89.56	26.75	71.65	2993									
Biograph Horizon PET/CT Gantry ^[9]	10532748					Floor	UUT-A2	2.40	2.0	1	1	1 ½	2	
Horizon 4 Ring PET Gantry	10532307	92.3	11.3	80.2	2387									
Perspective CT Gantry for PET	10891666	89.56	26.75	71.65	2993									
PATIENT TABLES														
Horizon Patient Handling System ^{[5][7]} (Acadia, M3.1 Control Rack)	10749480	16	148	46	1560 ^[2]	Floor	UUT C1734-2	2.40	2.0	1	1	1 ½	2	
Horizon Patient Handling System ^{[5][7]} (M3.1 Control Rack)	11217117	16	148	46	1560 ^[2]	Floor	INT	2.40	2.0	1	1	1 ½	2	
Horizon Patient Handling System ^{[5][7]}	10533010	16	148	46	1560 ^[2]	Floor	UUT-1	2.40	2.0	1	1	1 ½	2	
POWER DISTRIBUTION														
Line Control Box	10165884	11.8	29.5	32	248.5	Floor	UUT-A4	1.44	2.0	1	1	2 ½	2	
Power Distribution Computer Cabinet (PDCC)	11519082													
MARS Z8G4	10752891	44.0	35.0	63.8	1226.5	Floor	UUT E2002-1	1.44	2.0	1	1	2 ½	2	
IRS	11268053													
UPS 9Px5000 (QTY 2)	10530975													
EtherPET Switch	10749750													
USER INTERFACE														
Image Control System (ICS) Tower 12B	10864201	7.4	18.9	16.9	34	Floor	UUTA3	1.44	2.0	1	1	2 ½	2	
Image Control System (ICS) Tower 13B	11062026	6.9	16.5	15.6	26.5	Floor	UUT E2002-2	1.44	2.0	1	1	2 ½	2	
Image Reconstruction System (IRS) G1	10661000	7	25.5	17.75	61	Floor	UUT B1401-4	1.44	2.0	1	1	2 ½	2	

Table continues next page

ATTACHMENT 1: CERTIFIED PRODUCT TABLES

TABLE 2: BIOGRAPH HORIZON FAMILY

<i>System Manufacturer</i>		SIEMENS MEDICAL SOLUTIONS USA, INC.												
<i>System</i>		BIOGRAPH Horizon 3-Ring BIOGRAPH Horizon 4-Ring PET/CT												
COMPONENT	PART NO.	APPROX. DIMENSIONS (IN.)			MAX. WT. (LB.)	MOUNT	BASIS ^[1]	F _P /W _P	S _{DS}	z/h	a _P	R _P	Ω ₀	
		W	D	H										
Image Reconstruction System (IRS) G2	10928210	7	27.5	21.3	50	Floor	UUT B1518-4	1.44	2.0	1	1	2 ½	2	
19" LCD Monitor, DSC1913-D	10656056	16.5	8.3	16.1/18.2 5	17.5	Rigid Base	UUT-B5	1.44	2	1	1	2 ½	2	
<i>Mount</i>	<p>FLOOR (RIGID BASE): a free-standing, base mounted condition with the component rigidly attached to a supporting structure and no lateral support above the base.</p> <p>WALL/FLOOR (RIGID BASE): a base mounted condition with the component rigidly attached to a supporting structure and additional support at the top to an adjacent wall.</p>													
<i>Notes</i>	<p>1. BASIS:</p> <ul style="list-style-type: none"> • UUT#: Indicates that a test specimen matching these characteristics was tested as part of this testing program. • SAME: Model is physically, mechanically & electrically the same as test specimen. Difference is limited to model number, color, software and/or GE manufacturing location. • INT (Interpolate/Extrapolate): indicates a model that was not specifically tested, and by which seismic certification is established through evaluation of testing of other, similar models in the product line <p>2. Patient Bed weight includes all listed options but excludes 415 lb. simulated patient load present during testing and 652 lb. mounting plate, which is part of the Seismic Damper Kit.</p> <p>3. All components in table are manufactured by Siemens Healthcare unless otherwise noted.</p> <p>4. Special Seismic Certification limited to CT imaging only.</p> <p>5. Requires use of Cover Set (P/N: 10749871, 10528539 or 10751077), and Cover Hardware Kit (P/N: 10250116).</p> <p>6. NOT USED.</p> <p>7. Requires use of Siemens Seismic Damper Kits (P/N:10506201 and 10506217), and Seismic Install Kit – Horizon: (P/N: 10748527 and 10748528) or equivalent.</p> <p>8. NOT USED</p> <p>9. Requires use of Seismic Plates (P/N 10748527)</p>													

ATTACHMENT 1: CERTIFIED PRODUCT TABLES

TABLE 3: BIOGRAPH MCT FAMILY

System Manufacturer		SIEMENS MEDICAL SOLUTIONS USA, INC.												
System		BIOGRAPH mCT					BIOGRAPH mCT FLOW			BIOGRAPH mCT FLOW Edge				
COMPONENT	PART NO.	APPROX. DIMENSIONS (IN.)			MAX. WT. (LB.)	MOUNT	BASIS ^[1]	F _p /W _p	S _{DS}	z/h	a _p	R _p	Ω ₀	
		W	D	H										
PET-CT GANTRY														
Biograph Horizon PET/CT Gantry ^{[9][10]}	10532748					Floor	UUT-A2	2.40	2.0	1	1	1 ½	2	
Horizon 4 Ring PET Gantry	10532307	92.3	11.3	80.2	2387									
Perspective CT Gantry for PET	10891666	89.56	26.75	71.65	2993									
Biograph mCT Excel ^[8]	10507786	92.28	53.54	80.16	7169	Floor	INT	2.40	2.0	1	1	1 ½	2	
mCT 3 Ring PET Gantry (PET)														
Definition AS 20-Slice CT for PET														
Biograph mCT S(20)-3R ^[8]	10534159	92.28	53.54	80.16	7169	Floor	INT	2.40	2.0	1	1	1 ½	2	
mCT 3 Ring PET Gantry (PET)														
Definition AS 20-Slice CT for PET														
Biograph mCT S(20)-4R ^[8]	10534160	92.28	53.54	80.16	7184	Floor	INT	2.40	2.0	1	1	1 ½	2	
mCT 4 Ring PET Gantry (PET)														
Definition AS 20-Slice CT for PET														
Biograph mCT S(40)-3R ^[8]	10248668	92.28	53.54	80.16	7169	Floor	INT	2.40	2.0	1	1	1 ½	2	
mCT 3 Ring PET Gantry (PET)														
Definition AS 40-Slice CT for PET														
Biograph mCT S(40)-4R ^[8]	10248671	92.28	53.54	80.16	7184	Floor	INT	2.40	2.0	1	1	1 ½	2	
mCT 4 Ring PET Gantry (PET)														
Definition AS 40-Slice CT for PET														
Biograph mCT S(64)-3R ^[8]	10248669	92.28	53.54	80.16	7169	Floor	INT	2.40	2.0	1	1	1 ½	2	
mCT 3 Ring PET Gantry (PET)														
Definition AS 64-Slice CT for PET														
Biograph mCT S(64)-4R ^[8]	10248672	92.28	53.54	80.16	7184	Floor	INT	2.40	2.0	1	1	1 ½	2	
mCT 4 Ring PET Gantry (PET)														
Definition AS 64-Slice CT for PET														
Biograph mCT X-3R ^[8]	10248673	92.28	53.54	80.16	7169	Floor	INT	2.40	2.0	1	1	1 ½	2	
mCT 3 Ring PET Gantry (PET)														
Definition AS 128-Slice CT for PET														

Table continues next page

ATTACHMENT 1: CERTIFIED PRODUCT TABLES

TABLE 3: BIOGRAPH MCT FAMILY

System Manufacturer		SIEMENS MEDICAL SOLUTIONS USA, INC.												
System		BIOGRAPH mCT					BIOGRAPH mCT FLOW				BIOGRAPH mCT FLOW Edge			
COMPONENT	PART NO.	APPROX. DIMENSIONS (IN.)			MAX. WT. (LB.)	MOUNT	BASIS ^[1]	F _P /W _P	S _{DS}	z/h	a _P	R _P	Ω ₀	
		W	D	H										
Biograph mCT X-4R ^[8]	10248670	92.28	53.54	80.16	7184	Floor	INT	2.40	2.0	1	1	1 ½	2	
mCT 4 Ring PET Gantry (PET)														
Definition AS 128-Slice CT for PET														
Biograph mCT Flow 20-3R ^[8]	10528956	92.28	53.54	80.16	7169	Floor	INT	2.40	2.0	1	1	1 ½	2	
mCT 3 Ring PET Gantry (PET)														
Definition AS 20-Slice CT for PET														
Biograph mCT Flow 20-4R ^[8]	10528958	92.28	53.54	80.16	7184	Floor	INT	2.40	2.0	1	1	1 ½	2	
mCT 4 Ring PET Gantry (PET)														
Definition AS 20-Slice CT for PET														
Biograph mCT Flow 40-3R ^[8]	10529158	92.28	53.54	80.16	7169	Floor	INT	2.40	2.0	1	1	1 ½	2	
mCT 3 Ring PET Gantry (PET)														
Definition AS 40-Slice CT for PET														
Biograph mCT Flow 40-4R ^[8]	10529159	92.28	53.54	80.16	7184	Floor	INT	2.40	2.0	1	1	1 ½	2	
mCT 4 Ring PET Gantry (PET)														
Definition AS 40-Slice CT for PET														
Biograph mCT Flow 64-3R ^[8]	10529160	92.28	53.54	80.16	7169	Floor	INT	2.40	2.0	1	1	1 ½	2	
mCT 3 Ring PET Gantry (PET)														
Definition AS 64-Slice CT for PET														
Biograph mCT Flow 64-4R ^[8]	10529161	92.28	53.54	80.16	7184	Floor	INT	2.40	2.0	1	1	1 ½	2	
mCT 4 Ring PET Gantry (PET)														
Definition AS 64-Slice CT for PET														
Biograph mCT Flow Edge-3R ^[8]	10528954	92.28	53.54	80.16	7169	Floor	INT	2.40	2.0	1	1	1 ½	2	
mCT 3 Ring PET Gantry (PET)														
Definition Edge 128-Slice CT for PET														
Biograph mCT Flow Edge-4R ^[8]	10528955	92.28	53.54	80.16	7184	Floor	UUT-B1	2.40	2.0	1	1	1 ½	2	
mCT 4 Ring PET Gantry (PET)														
Definition Edge 128-Slice CT for PET														

Table continues next page

ATTACHMENT 1: CERTIFIED PRODUCT TABLES

TABLE 3: BIOGRAPH MCT FAMILY

System Manufacturer		SIEMENS MEDICAL SOLUTIONS USA, INC.														
System		BIOGRAPH mCT					BIOGRAPH mCT FLOW					BIOGRAPH mCT FLOW Edge				
COMPONENT	PART NO.	APPROX. DIMENSIONS (IN.)			MAX. WT. (LB.)	MOUNT	BASIS ^[1]	F _P /W _P	S _{DS}	z/h	a _P	R _P	Ω ₀			
		W	D	H												
PATIENT TABLES																
mCT Patient Handling System ^{[5][6]}	10529199	16	148	46	1560 ^[2]	Floor	UUT-2	2.40	2.0	1	1	1 ½	2			
mCT Patient Handling System (Acadia, NEO V Control Rack) ^{[5][6]}	10749470	16	148	46	1560 ^[2]	Floor	UUT C1734-1	2.40	2.0	1 0	1	1 ½	2			
POWER DISTRIBUTION																
Power Distribution Cabinet (PDC)	08366465	35.4	27.2	76.8	1231	Wall/Floor	UUT B1614-8	1.44	2.0	1	1	2 ½	2			
Power Distribution Cabinet (PDC) w/ Cable Management Rack	08366465 10530286	35.4	32.2	76.8	1326 ^[12]	Wall/Floor	UUT E1926-2	1.44	2.0	1	1	2 ½	2			
USER INTERFACE																
Image Control System (ICS) Tower 11E	10590814	8.5	20.5	17.5	53	Floor	UUT-3	1.44	2.0	1	1	2 ½	2			
Image Control System (ICS) Tower 12E	10864203	7.375	19	17	34	Floor	UUT B1417-5	1.44	2.0	1	1	2 ½	2			
Image Control System (ICS) Tower 13E	11062028	6.9	16.5	15.1	26	Floor	UUT D1817-4	1.44	2.0	1	1	2 ½	2			
Image Reconstruction System (IRS) 3 C Configuration (IRS mx3c)	10187110	12.6	29.9	20.9	102	Floor	UUT-4	1.44	2.0	1	1	2 ½	2			
Image Reconstruction System (IRS) 3 B Configuration (IRS mx3b)	10187109	12.6	29.9	20.9	119	Floor	INT	1.44	2.0	1	1	2 ½	2			
Image Reconstruction System (IRS) 3 D Configuration (IRS mx3d)	10187111	12.6	28.0	20.9	119	Floor	UUT-5	1.44	2.0	1	1	2 ½	2			
Image Reconstruction System (IRS) 4 B Configuration mx4b	10890634	7	26.2	20	58	Floor	UUT-B3	1.44	2.0	1	1	2 ½	2			
Image Reconstruction System (IRS) 4 C Configuration mx4c	10890635	7	26.2	20	53	Floor	UUT-B7	1.44	2	1	1	2 ½	2			
Image Reconstruction System (IRS) 4 D Configuration mx4d	10890636	7	26.2	20	61	Floor	UUT-B4	1.44	2.0	1	1	2 ½	2			
Image Reconstruction System (IRS) IRSmx3d	10431954	12.2	30.7	19.7	109	Floor	UUT B1417-6	1.44	2.0	1	1	2 ½	2			
Image Reconstruction System (IRS) mx5b	10590111	8.5	25.5	17.5	62	Floor	UUT E1926-3	1.44	2.0	1	1	2 ½	2			


Table continues next page


ATTACHMENT 1: CERTIFIED PRODUCT TABLES

TABLE 3: BIOGRAPH MCT FAMILY

<i>System Manufacturer</i>		SIEMENS MEDICAL SOLUTIONS USA, INC.												
<i>System</i>		BIOGRAPH mCT				BIOGRAPH mCT FLOW				BIOGRAPH mCT FLOW Edge				
COMPONENT	PART NO.	APPROX. DIMENSIONS (IN.)			MAX. WT. (LB.)	MOUNT	BASIS ^[1]	F _P /W _P	S _{DS}	z/h	a _P	R _P	Ω ₀	
		W	D	H										
Image Reconstruction System (IRS) mx5c	10590112	8.5	25.5	17.5	57	Floor	UUT E1926-4	1.44	2.0	1	1	2 ½	2	
19" LCD Monitor, DSC1913-D	10656056	16.5	8.3	16.1/18.2 5	17.5	Rigid Base	UUT-B5	1.44	2	1	1	2 ½	2	
<i>Mount</i>	<p>FLOOR (RIGID BASE): a free-standing, base mounted condition with the component rigidly attached to a supporting structure and no lateral support above the base.</p> <p>WALL/FLOOR (RIGID BASE): a base mounted condition with the component rigidly attached to a supporting structure and additional support at the top to an adjacent wall.</p>													
<i>Notes</i>	<p>1. BASIS:</p> <ul style="list-style-type: none"> • UUT#: Indicates that a test specimen matching these characteristics was tested as part of this testing program. • SAME: Model is physically, mechanically & electrically the same as test specimen. Difference is limited to model number, color, software and/or GE manufacturing location. • INT (Interpolate/Extrapolate): indicates a model that was not specifically tested, and by which seismic certification is established through evaluation of testing of other, similar models in the product line <p>2. Patient Bed weight includes all listed options but excludes 415 lb. simulated patient load present during testing and 652 lb. mounting plate, which is part of the Seismic Damper Kit.</p> <p>3. All components in table are manufactured by Siemens Healthcare unless otherwise noted.</p> <p>4. Special Seismic Certification limited to CT imaging only.</p> <p>5. Requires use of Cover Set (P/N: 10749871, 10528539 or 10751077), and Cover Hardware Kit (P/N: 10250116).</p> <p>6. Requires use of Siemens Seismic Damper Kits (P/N:10506201 and 10506217), and Seismic Install Kit – mCT: (P/N: 10504127 and 10251356) or equivalent.</p> <p>7. NOT USED</p> <p>8. Requires use of Seismic Plates (P/N 10504127)</p> <p>9. Requires use of Seismic Plates (P/N 10748527)</p> <p>10. Component not used with these systems; it is included only to provide basis for interpolation.</p>													

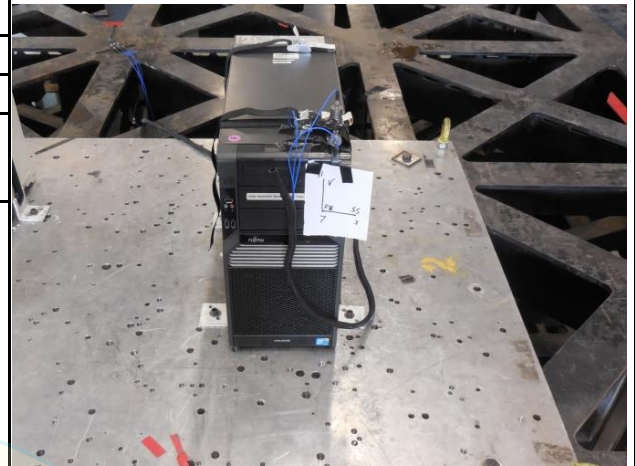
ATTACHMENT 2: SEISMIC CERTIFIED COMPONENTS

UUT- 1		Horizon PHS							
MANUFACTURER:		Siemens Medical Solutions USA, Inc.							
IDENTIFICATION:		Model No.: 10533010							
DESCRIPTION:		Component of Biograph Horizon PET-CT System. Contents were included in testing per operating conditions.							
MOUNTING:		Floor mounted using (30) – ½" diameter SAE J429 Grade 8 bolts to interface frame.							
PROPERTIES:									
DIMENSIONS (in.)					LOWEST RESONANT FREQUENCY (Hz.)				
Width	Depth	Height	Weight (lb.)		Front-Axis	Side-Axis	Vert-Axis		
16	148	46	1560 + 415 patient		3.7	48.4	4.6		
SHAKE TABLE TEST PARAMETERS									
CODE	TEST CRITERIA	S _{DS} (g)	z/h	I _P	A _{FLX-H} (g)	A _{RIG-H} (g)	A _{FLX-V} (g)	A _{RIG-V} (g)	
CBC 2019	ICC-ES AC156	2.0	1.0	1.5	3.20	2.40	1.34	0.54	
Unit maintained structural integrity and remained functional per manufacturer requirement after the AC156 test.									

UUT- 2		mCT PHS							
MANUFACTURER:		Siemens Medical Solutions USA, Inc.							
IDENTIFICATION:		Model No.: 10529199							
DESCRIPTION:		Component of Biograph mCT & mCT Flow PET-CT System. Contents were included in testing per operating conditions.							
MOUNTING:		Floor mounted using (30) – ½" diameter SAE J429 Grade 8 bolts to interface frame.							
PROPERTIES:									
DIMENSIONS (in.)					LOWEST RESONANT FREQUENCY (Hz.)				
Width	Depth	Height	Weight (lb.)		Front-Axis	Side-Axis	Vert-Axis		
16	148	46	1560 + 415 patient		3.6	47.9	4.6		
SHAKE TABLE TEST PARAMETERS									
CODE	TEST CRITERIA	S _{DS} (g)	z/h	I _P	A _{FLX-H} (g)	A _{RIG-H} (g)	A _{FLX-V} (g)	A _{RIG-V} (g)	
CBC 2019	ICC-ES AC156	2.0	1.0	1.5	3.20	2.40	1.34	0.54	
Unit maintained structural integrity and remained functional per manufacturer requirement after the AC156 test.									

ATTACHMENT 2: SEISMIC CERTIFIED COMPONENTS

UUT- 3		ICS Tower 11	
MANUFACTURER:		Fujitsu	
IDENTIFICATION:		Model No.: 10590814	
DESCRIPTION:		Component of Biograph mCT Flow PET-CT System. Contents were included in testing per operating conditions.	
MOUNTING:		<p>Rigid Base (Floor) Mounted using a strap assembly at front and rear. Each strap assembly consisting of: 1" wide nylon strap w/ metal cam buckle (50 lb tension / 200 lb WLL) looped through slots in vertical legs of (2) – L2½ x 2½ x ¼ x 0'-2½" brackets positioned snug against unit.</p> <p>Each bracket attached w/ 3/8" diameter Allen Head cap screw threaded into aluminum plate. (1 set ea. front & rear, 4 bolts total.)</p>	
PROPERTIES:			
DIMENSIONS (in.)			LOWEST RESONANT FREQUENCY (Hz.)
Width	Depth	Height	Weight (lb.)
8.5	20.5	17.5	53
		Transverse-Axis	Longitudinal-Axis
		25.0	37.9
		Vertical-Axis	
		>50	
SHAKE TABLE TEST PARAMETERS			
CODE	TEST CRITERIA	S _{DS} (g)	z/h
CBC 2019	ICC-ES AC156	2.0	1.0
		I _P	A _{FLX-H} (g)
		1.5	3.20
		A _{RIG-H} (g)	A _{FLX-V} (g)
		2.40	1.34
		A _{RIG-V} (g)	
			0.54
Unit maintained structural integrity and remained functional per manufacturer requirement after the AC156 test.			

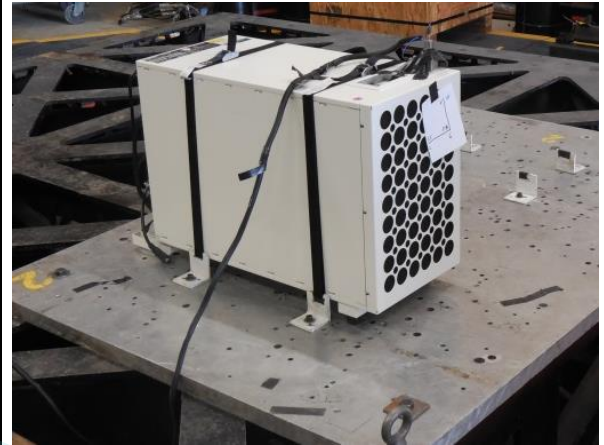


UUT- 4		IRS 3C	
MANUFACTURER:		Siemens Medical Solutions USA, Inc.	
IDENTIFICATION:		Model No.: 10187110	
DESCRIPTION:		Component of Biograph mCT Flow PET-CT System. Contents were included in testing per operating conditions.	
MOUNTING:		<p>Rigid Base (Floor) Mounted using a strap assembly at front and rear. Each strap assembly consisting of: 1" wide nylon strap w/ metal cam buckle (50 lb tension / 200 lb WLL) looped through slots in vertical legs of (2) – L2½ x 2½ x ¼ x 0'-2½" brackets positioned snug against unit.</p> <p>Each bracket attached w/ 3/8" diameter Allen Head cap screw threaded into aluminum plate. (1 set ea. front & rear, 4 bolts total.)</p>	
PROPERTIES:			
DIMENSIONS (in.)			LOWEST RESONANT FREQUENCY (Hz.)
Width	Depth	Height	Weight (lb.)
12.6	29.9	20.9	102
		Transverse-Axis	Longitudinal-Axis
		21.9	32.7
		Vertical-Axis	
		41.0	
SHAKE TABLE TEST PARAMETERS			
CODE	TEST CRITERIA	S _{DS} (g)	z/h
CBC 2019	ICC-ES AC156	2.0	1.0
		I _P	A _{FLX-H} (g)
		1.5	3.20
		A _{RIG-H} (g)	A _{FLX-V} (g)
		2.40	1.34
		A _{RIG-V} (g)	
			0.54
Unit maintained structural integrity and remained functional per manufacturer requirement after the AC156 test.			



ATTACHMENT 2: SEISMIC CERTIFIED COMPONENTS

UUT- 5		IRS 3D	
MANUFACTURER:		Siemens Medical Solutions USA, Inc.	
IDENTIFICATION:		Model No.: 10187111	
DESCRIPTION:		Component of Biograph mCT Flow PET-CT System. Contents were included in testing per operating conditions.	
MOUNTING:		<p>Rigid Base (Floor) Mounted using a strap assembly at front and rear. Each strap assembly consisting of: 1" wide nylon strap w/ metal cam buckle (50 lb tension / 200 lb WLL) looped through slots in vertical legs of (2) – L2½ x 2½ x ¼ x 0'-2½" brackets positioned snug against unit.</p> <p>Each bracket attached w/ 3/8" diameter Allen Head cap screw threaded into aluminum plate. (1 set ea. front & rear, 4 bolts total.)</p>	
PROPERTIES:			
DIMENSIONS (in.)			LOWEST RESONANT FREQUENCY (Hz.)
Width	Depth	Height	Weight (lb.)
12.6	28	20.9	119
		Front-Axis	Side-Axis
		19.8	32.1
		Vert-Axis	
		35.4	
SHAKE TABLE TEST PARAMETERS			
CODE	TEST CRITERIA	S _{Ds} (g)	z/h
CBC 2019	ICC-ES AC156	2.0	1.0
		I _p	A _{FLX-H} (g)
		1.5	3.20
		A _{RIG-H} (g)	A _{FLX-V} (g)
		2.40	1.34
		A _{RIG-V} (g)	
			0.54
Unit maintained structural integrity and remained functional per manufacturer requirement after the AC156 test.			



UUT- A1		Horizon 3-Ring PET- CT Gantry	
MANUFACTURER:		Siemens Medical Solutions USA, Inc.	
IDENTIFICATION:		PET Model No.: 10532494	
		CT Model No.: 10891666	
DESCRIPTION:		Component of Biograph Horizon PET-CT System. Contents were included in testing per operating conditions.	
MOUNTING:		Rigid Base (Floor) Mounted using: (32) ½" dia SAE J429 Grade 8 bolts.	
PROPERTIES:			
DIMENSIONS (in.)			LOWEST RESONANT FREQUENCY (Hz.)
Width	Depth	Height	Weight (lb.)
PET 92.3	11.3	80.2	5795
CT 89.6	26.8	71.7	(includes 500lb mounting plate)
		Front-Axis	Side-Axis
		8.3	6.8
		Vert-Axis	
		25.8	
SHAKE TABLE TEST PARAMETERS			
CODE	TEST CRITERIA	S _{Ds} (g)	z/h
CBC 2019	ICC-ES AC156	2.0	1.0
		I _p	A _{FLX-H} (g)
		1.5	3.20
		A _{RIG-H} (g)	A _{FLX-V} (g)
		2.40	1.34
		A _{RIG-V} (g)	
			0.54
Unit maintained structural integrity and remained functional per manufacturer requirement after the AC156 test.			



ATTACHMENT 2: SEISMIC CERTIFIED COMPONENTS


UUT- A2 Horizon 4-Ring PET- CT Gantry									
MANUFACTURER:		Siemens Medical Solutions USA, Inc.							
IDENTIFICATION:		PET Model No.: 10532307 CT Model No.: 10891666							
DESCRIPTION:		Component of Biograph Horizon PET-CT System. Contents were included in testing per operating conditions.							
MOUNTING:		Rigid Base (Floor) Mounted using: (32) ½" dia SAE J429 Grade 8 bolts.							
PROPERTIES:									
DIMENSIONS (in.)					LOWEST RESONANT FREQUENCY (Hz.)				
	Width	Depth	Height	Weight (lb.)	Front-Axis	Side-Axis	Vert-Axis		
PET	92.3	11.3	80.2	5880 (includes 500lb mounting plate)	7.7	6.7	25.3		
CT	89.6	26.8	71.7						
SHAKE TABLE TEST PARAMETERS									
CODE	TEST CRITERIA	S _{DS} (g)	z/h	I _P	A _{FLX-H} (g)	A _{RIG-H} (g)	A _{FLX-V} (g)	A _{RIG-V} (g)	
CBC 2019	ICC-ES AC156	2.0	1.0	1.5	3.20	2.40	1.34	0.54	
Unit maintained structural integrity and remained functional per manufacturer requirement after the AC156 test.									




UUT- A3 Image Control System (ICS)									
MANUFACTURER:		Fujitsu							
IDENTIFICATION:		Model No.: 10864201							
DESCRIPTION:		Component of Biograph Horizon PET-CT System. Contents were included in testing per operating conditions.							
MOUNTING:		Rigid Base (Floor) Mounted using a strap assembly at front and rear. Each strap assembly consisting of: 1" wide nylon strap w/ metal cam buckle (50 lb tension / 200 lb WLL) looped through slots in vertical legs of (2) – L2½" x 2½" x ¼" x 0'-2½" steel brackets positioned snug against unit. Each bracket attached w/ 3/8" diameter Allen Head cap screw threaded into aluminum plate. (1 set ea. front & rear, 4 bolts total.)							
PROPERTIES:									
DIMENSIONS (in.)					LOWEST RESONANT FREQUENCY (Hz.)				
	Width	Depth	Height	Weight (lb.)	Front-Axis	Side-Axis	Vert-Axis		
	7 – 3/8	18 – 7/8	16 – 7/8	34	24.7	42.7	>50		
SHAKE TABLE TEST PARAMETERS									
CODE	TEST CRITERIA	S _{DS} (g)	z/h	I _P	A _{FLX-H} (g)	A _{RIG-H} (g)	A _{FLX-V} (g)	A _{RIG-V} (g)	
CBC 2019	ICC-ES AC156	2.0	1.0	1.5	3.20	2.40	1.34	0.54	
Unit maintained structural integrity and remained functional per manufacturer requirement after the AC156 test.									





ATTACHMENT 2: SEISMIC CERTIFIED COMPONENTS

UUT- A4 LCB (LINE CONTROL BOX)								
MANUFACTURER:	Siemens Medical Solutions USA, Inc.							
IDENTIFICATION:	Model No.: 10165884							
DESCRIPTION:	Component of SOMATOM Perspective CT System. Contents were included in testing per operating conditions.							
MOUNTING:	Floor mounted using (4) – 3/8" dia GR 8 Allen head cap bolts through holes tapped in aluminum interface plate.							
								
PROPERTIES:								
DIMENSIONS (in.)				LOWEST RESONANT FREQUENCY (Hz.)				
Width	Depth	Height	Weight (lb.)	F/B Axis	S/S Axis	Vert Axis		
11.75	29.375	31.5	248.5	13.9	25.3	>50		
SHAKE TABLE TEST PARAMETERS								
CODE	TEST CRITERIA	S _{DS}	z/h	I _P	A _{FLX-H}	A _{RIG-H}	A _{FLX-V}	A _{RIG-V}
CBC 2019	ICC-ES AC156-10	2.0	1.0	1.5	3.20	2.40	1.34	0.54
Unit maintained structural integrity and remained functional per manufacturer requirement after the AC156 test.								

UUT- B1 MCT 4 Ring PET Gantry (PET) with Definition EDGE (CT)								
MANUFACTURER:	Siemens Medical Solutions USA, Inc.							
IDENTIFICATION:	Model No.: 10528955							
DESCRIPTION:	System component of the Biograph MCT PET-CT System. Contents were included in testing per operating conditions.							
MOUNTING:	Rigid Base (Floor) Mounted using (32) -1/2" dia SAE J429 Grade 8 bolts.							
								
PROPERTIES:								
DIMENSIONS (in.)				LOWEST RESONANT FREQUENCY (Hz.)				
Width	Depth	Height	Weight (lb.)	Side-Axis	Front-Axis	Vert-Axis		
92.3	53.5	80.2	7184	8.3	6.6	23.8		
SHAKE TABLE TEST PARAMETERS								
CODE	TEST CRITERIA	S _{DS} (G)	z/h	I _P	A _{FLX-H} (G)	A _{RIG-H} (G)	A _{FLX-V} (G)	A _{RIG-V} (G)
CBC 2019	ICC-ES AC156	2.0	1.0	1.5	3.20	2.40	1.34	0.54
Unit maintained structural integrity and remained functional per manufacturer requirement after the AC156 test.								

ATTACHMENT 2: SEISMIC CERTIFIED COMPONENTS

UUT- B3 Image Reconstruction System (IRS) mx4b									
MANUFACTURER: Siemens Medical Solutions USA, Inc.									
IDENTIFICATION:									
Model No.: 10890634									
Serial No.: LBH18B0279									
DESCRIPTION: System component of the Biograph MCT PET-CT System. Contents were included in testing per operating conditions.									
MOUNTING: Rigid Base (Floor) Mounted using: using (2) strap sets, each consisting of 1" wide nylon strap w/ metal cinch (200 lb WLL) looped through slots in vertical legs of (2) – L2½ x 2½ x ¼ x 0'-2½" brackets positioned snug against unit. Each bracket attached w/ 3/8" dia. ASTM A574 Socket Head Cap Screws threaded into aluminum plate. (1 set ea. front & rear, 4 bolts total.)									
PROPERTIES:									
DIMENSIONS (in.)					LOWEST RESONANT FREQUENCY (Hz.)				
Width	Depth	Height	Weight (lb.)		Front-Axis	Side-Axis	Vert-Axis		
7	26.2	20	58		>50	40.2	>50		
SHAKE TABLE TEST PARAMETERS									
CODE	TEST CRITERIA	S _{DS} (G)	z/h	I _P	A _{FLX-H} (G)	A _{RIG-H} (G)	A _{FLX-V} (G)	A _{RIG-V} (G)	
CBC 2019	ICC-ES AC156	2.0	1.0	1.5	3.20	2.40	1.34	0.54	
Unit maintained structural integrity and remained functional per manufacturer requirement after the AC156 test.									

UUT- B4 Image Reconstruction System mx4d									
MANUFACTURER: Siemens Medical Solutions USA, Inc.									
IDENTIFICATION:									
Model No.: 10890636									
Serial No.: LBF78D0209									
DESCRIPTION: System component of the Biograph MCT PET-CT System. Contents were included in testing per operating conditions.									
MOUNTING: Rigid Base (Floor) Mounted using: using (2) strap sets, each consisting of 1" wide nylon strap w/ metal cinch (200 lb WLL) looped through slots in vertical legs of (2) – L2½ x 2½ x ¼ x 0'-2½" brackets positioned snug against unit. Each bracket attached w/ 3/8" dia. ASTM A574 Socket Head Cap Screws threaded into aluminum plate. (1 set ea. front & rear, 4 bolts total.)									
PROPERTIES:									
DIMENSIONS (in.)					LOWEST RESONANT FREQUENCY (Hz.)				
Width	Depth	Height	Weight (lb.)		Front-Axis	Side-Axis	Vert-Axis		
7	26.2	20	61		26.7	30.0	31.6		
SHAKE TABLE TEST PARAMETERS									
CODE	TEST CRITERIA	S _{DS} (G)	z/h	I _P	A _{FLX-H} (G)	A _{RIG-H} (G)	A _{FLX-V} (G)	A _{RIG-V} (G)	
CBC 2019	ICC-ES AC156	2.0	1.0	1.5	3.20	2.40	1.34	0.54	
Unit maintained structural integrity and remained functional per manufacturer requirement after the AC156 test.									

ATTACHMENT 2: SEISMIC CERTIFIED COMPONENTS


UUT- B5		19" LCD Monitor, DSC1913-D						
MANUFACTURER:		Siemens Healthcare						
IDENTIFICATION:		Model No.: 10656056						
		Serial No.: E151510501						
DESCRIPTION:		System component of the Biograph MCT PET-CT System. Contents were included in testing per operating conditions.						
MOUNTING:		Countertop Anchored using (2) -#10-32 Machine screws through 3/4" plywood w/ nuts & washers on far side.						
PROPERTIES:								
DIMENSIONS (in.)				LOWEST RESONANT FREQUENCY (Hz.)				
Width	Depth	Height	Weight (lb.)	Front-Axis	Side-Axis	Vert-Axis		
16.5	8.3	16.1 min 18.25 max	17.5	17.6	10.6	18.5		
SHAKE TABLE TEST PARAMETERS								
CODE	TEST CRITERIA	S _{DS} (G)	z/h	I _P	A _{FLX-H} (G)	A _{RIG-H} (G)	A _{FLX-V} (G)	A _{RIG-V} (G)
CBC 2019	ICC-ES AC156	2.0	1.0	1.5	3.20	2.40	1.34	0.54
Unit maintained structural integrity and remained functional per manufacturer requirement after the AC156 test.								




UUT- B7		Image Reconstruction System (IRS) mx4c						
MANUFACTURER:		Siemens Healthcare						
IDENTIFICATION:		Model No.: 10890635						
		Serial No.: LBF98C0246						
DESCRIPTION:		System component of the Biograph MCT PET-CT System. Contents were included in testing per operating conditions.						
MOUNTING:		Rigid Base (Floor) Mounted using: using (2) strap sets, each consisting of 1" wide nylon strap w/ metal cinch (200 lb WLL) looped through slots in vertical legs of (2) - L2½ x 2½ x ¼ x 0'-2½" brackets positioned snug against unit. Each bracket attached w/ 3/8" dia. ASTM A574 Socket Head Cap Screws threaded into aluminum plate. (1 set ea. front & rear, 4 bolts total.)						
PROPERTIES:								
DIMENSIONS (in.)				LOWEST RESONANT FREQUENCY (Hz.)				
Width	Depth	Height	Weight (lb.)	Front-Axis	Side-Axis	Vert-Axis		
7	26.2	20	53	>50	32.6	44.8		
SHAKE TABLE TEST PARAMETERS								
CODE	TEST CRITERIA	S _{DS} (G)	z/h	I _P	A _{FLX-H} (G)	A _{RIG-H} (G)	A _{FLX-V} (G)	A _{RIG-V} (G)
CBC 2019	ICC-ES AC156	2.0	1.0	1.5	3.20	2.40	1.34	0.54
Unit maintained structural integrity and remained functional per manufacturer requirement after the AC156 test.								

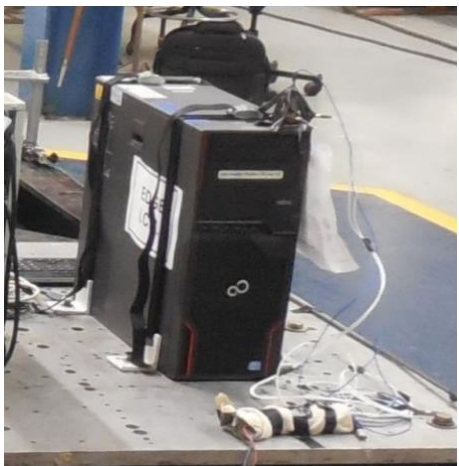



ATTACHMENT 2: SEISMIC CERTIFIED COMPONENTS

UUT-B1614-8 Power Distribution Cabinet (PDC)									
MANUFACTURER: Siemens Medical Solutions USA, Inc.									
IDENTIFICATION: Model No.: 08366465									
a—a									
DESCRIPTION: System component of the Biograph MCT PET-CT System. Contents were included in testing per operating conditions.									
MOUNTING: Wall/Floor Mounted using: (4) - 1/2" dia. SAE J429 Grade 8 bolts at base. 7ga. AISI 316 (SS) bracket w/ (4) - 1/4" dia. SAE J429 Grade 5 bolts to 16ga. steel wall backing plate. (2)- M12 -Class 4.6 bolts to top of cabinet									
PROPERTIES:									
DIMENSIONS (in.)				LOWEST RESONANT FREQUENCY (Hz.)					
Width	Depth	Height	Weight (lb.)	Front-Axis	Side-Axis	Vert-Axis			
35.4	27.2	76.8	1231	45.5	12.8	13.5			
SHAKE TABLE TEST PARAMETERS									
CODE	TEST CRITERIA	S _{DS} (G)	z/h	I _P	A _{FLX-H} (G)	A _{RIG-H} (G)	A _{FLX-V} (G)	A _{RIG-V} (G)	
CBC 2019	ICC-ES AC156	2.0	1.0	1.5	3.20	2.40	1.34	0.54	
Unit maintained structural integrity and remained functional per manufacturer requirement after the AC156 test.									


UUT-B1401-4 Image Reconstruction System (IRS) G1									
MANUFACTURER: Supermicro									
IDENTIFICATION: Model No.: 10661000									
DESCRIPTION: Component of SOMATOM Perspective CT System. Contents were included in testing per operating conditions.									
MOUNTING: Rigid Base (Floor) Mounted using (2) strap sets. Each strap set consisting of 1" wide nylon strap w/ metal cinch (100 lb tension / 200 lb WLL) looped through slots in vertical legs of (2) - L2 1/2 x 2 1/2 x 1/4 x 0'-2 1/2" brackets positioned snug against unit. Each bracket anchored to plywood with (2)-#8 SMS/bracket (8 screws total)									
PROPERTIES:									
DIMENSIONS (in.)				LOWEST RESONANT FREQUENCY (Hz.)					
Width	Depth	Height	Weight (lb.)	Front-Axis	Side-Axis	Vert-Axis			
7	25.5	17.75	61	17.1	25.9	28.7			
SHAKE TABLE TEST PARAMETERS									
CODE	TEST CRITERIA	S _{DS} (G)	z/h	I _P	A _{FLX-H} (G)	A _{RIG-H} (G)	A _{FLX-V} (G)	A _{RIG-V} (G)	
CBC 2019	ICC-ES AC156	2.0 2.6	1.0 0.0	1.5	3.2	2.4	1.74	0.70	
Unit maintained structural integrity and remained functional per manufacturer requirement after the AC156 test.									

ATTACHMENT 2: SEISMIC CERTIFIED COMPONENTS

UUT- B1417-5 Image Control System (ICS) Tower 12E									
MANUFACTURER:		Fujitsu							
IDENTIFICATION:		Model No.: 10864203							
DESCRIPTION:		Component of SOMATOM Definition Edge CT System. Contents were included in testing per operating conditions.							
MOUNTING:		<p>Rigid Base (Floor) Mounted using: using (2) strap sets, each consisting of 1" wide nylon strap w/ metal cinch (200 lb WLL) looped through slots in vertical legs of (2) – L2½ x 2½ x ¼ x 0'-2½" brackets positioned snug against unit.</p> <p>Each bracket attached w/ 3/8" dia. ASTM A574 Socket Head Cap Screws threaded into aluminum plate. (1 set ea. front & rear, 4 bolts total.)</p>							
									
PROPERTIES:									
DIMENSIONS (in.)					LOWEST RESONANT FREQUENCY (Hz.)				
Width	Depth	Height	Weight (lb.)		Side-Axis	Front-Axis	Vertical-Axis		
7.375	19	17	34		41.2	28.4	17.2		
SHAKE TABLE TEST PARAMETERS									
CODE	TEST CRITERIA	S _{DS}	z/h	I _p	A _{FLX-H}	A _{RIG-H}	A _{FLX-V}	A _{RIG-V}	
CBC 2019	ICC-ES AC156	2.0	1.0	1.5	3.2	2.4	1.34	0.54	
Unit maintained structural integrity and functionality after the ICC-ES AC 156 test									

UUT- B1417-6 Image Reconstruction System (IRS) IRSmx3d									
MANUFACTURER:		Siemens Healthcare							
IDENTIFICATION:		Model No.: 10431954							
DESCRIPTION:		Component of SOMATOM Definition Edge CT System. Contents were included in testing per operating conditions.							
MOUNTING:		<p>Rigid Base (Floor) Mounted using: (2) strap sets, each consisting of 1" wide nylon strap w/ metal cinch (200 lb WLL) looped through slots in vertical legs of (2) – L2½ x 2½ x ¼ x 0'-2½" brackets positioned snug against unit.</p> <p>Each bracket attached w/ 3/8" dia. ASTM A574 Socket Head Cap Screws threaded into aluminum plate. (1 set ea. front & rear, 4 bolts total.)</p>							
									
PROPERTIES:									
DIMENSIONS (in.)					LOWEST RESONANT FREQUENCY (Hz.)				
Width	Depth	Height	Weight (lb.)		Side-Axis	Front-Axis	Vertical-Axis		
12.2	30.7	19.7	109		16.6	25.9	45.3		
SHAKE TABLE TEST PARAMETERS									
CODE	TEST CRITERIA	S _{DS}	z/h	I _p	A _{FLX-H}	A _{RIG-H}	A _{FLX-V}	A _{RIG-V}	
CBC 2019	ICC-ES AC156	2.0	1.0	1.5	3.2	2.4	1.34	0.54	
Unit maintained structural integrity and functionality after the ICC-ES AC 156 test									

ATTACHMENT 2: SEISMIC CERTIFIED COMPONENTS

UUT-B1518-4 Image Reconstruction System (IRS) - G2									
MANUFACTURER:		Siemens Healthcare							
IDENTIFICATION:		Model No.: 10928210							
DESCRIPTION:		Component of SOMATOM SCOPE CT System. Contents were included in testing per operating conditions.							
MOUNTING:		Rigid Base (Floor) Mounted using: (2) strap sets, each consisting of 1" wide nylon strap w/ metal cinch (200 lb WLL) looped through slots in vertical legs of (2) – L2½ x 2½ x ¼ x 0'-2½" brackets positioned snug against unit. Each bracket attached w/ 3/8" dia. ASTM A574 Socket Head Cap Screws threaded into aluminum plate. (1 set ea. front & rear, 4 bolts total.)							
									
PROPERTIES:									
DIMENSIONS (in.)					LOWEST RESONANT FREQUENCY (Hz.)				
Width	Depth	Height	Weight (lb.)		Transverse-Axis	Longitudinal-Axis	Vertical-Axis		
7	27.5	21.3	50		25.3	42.3	44.1		
SHAKE TABLE TEST PARAMETERS									
CODE	TEST CRITERIA	S _{ds} (g)	z/h	I _p	A _{FLX-H} (g)	A _{RIG-H} (g)	A _{FLX-V} (g)	A _{RIG-V} (g)	
CBC 2019	ICC-ES AC156	2.5	0	1.5	2.50	1.00	1.68	0.68	
		2.0	1		3.20	2.40	1.34	0.54	
Unit maintained structural integrity and remained functional per manufacturer requirement									

UUT- C1734-1 mCT Patient Handling System (PHS)									
MANUFACTURER:		Siemens Medical Solutions USA, Inc.							
IDENTIFICATION:		Model No.: 10749470							
		Serial No.: 104							
DESCRIPTION:		Component of mCT PET-CT Systems Installed Options: Acadia, NEO V Rack Cover Set (P/N: 10749871) Seismic Damper Kits (P/N:10506201 and 10506217), and Seismic Install Kit – mCT: (P/N: 10504127 and 10251356)							
MOUNTING:		Rigid Base (Floor) Mounted using (30) – ½" diameter SAE J429 Grade 8 bolts to interface frame.							
DIMENSIONS (in.)					LOWEST RESONANT FREQUENCY (Hz.)				
Width	Depth	Height	Weight (lb.)		Side-Axis	Front-Axis	Vertical-Axis		
16	148	46	1560		4.1	>50	5.1		
ICC-ES AC156 SHAKE TABLE TEST PARAMETERS									
S _{ds}	z/h	I _p	A _{FLX-H}	A _{RIG-H}	A _{FLX-V}	A _{RIG-V}			
2.0	1	1.5	3.20	2.40	1.68	0.68			
2.5	0								
Unit maintained structural integrity and remained functional per manufacturer requirement.									



ATTACHMENT 2: SEISMIC CERTIFIED COMPONENTS


UUT- C1734-2 Horizon Patient Handling System (PHS)							
MANUFACTURER:		Siemens Medical Solutions USA, Inc.					
IDENTIFICATION:		Model No.: 10749480					
		Serial No.: 104					
DESCRIPTION:		Component of Horizon PET-CT Systems Installed Options: Acadia, M3.1 Rack Cover Set (P/N: 10749871) Seismic Damper Kits (P/N:10506201 and 10506217), and Seismic Install Kit – Horizon: (P/N: 10748527 and 10748528)					
MOUNTING:		Rigid Base (Floor) Mounted using (30) – ½” diameter SAE J429 Grade 8 bolts to interface frame.					
DIMENSIONS (in.)				LOWEST RESONANT FREQUENCY (Hz.)			
Width	Depth	Height	Weight (lb.)	Side-Axis	Front-Axis	Vertical-Axis	
16	148	46	1560	4.1	>50	5.1	
ICC-ES AC156 SHAKE TABLE TEST PARAMETERS							CODE: 2019 CBC
S _{DS}	z/h	I _p	A _{FLX-H}	A _{RIG-H}	A _{FLX-V}	A _{RIG-V}	
2.0	1	1.5	3.20	2.40	1.68	0.68	
2.5	0						
Unit maintained structural integrity and remained functional per manufacturer requirement.							




UUT D1817-1 Biograph Vision 600 Edge PET-CT Gantry							
MANUFACTURER:		Siemens Medical Solutions USA, Inc.					
IDENTIFICATION:		Model No.: 10749672					
		Serial No.: NONE					
DESCRIPTION:		Production Equivalent Unit Component of the Biograph Vision 600 Edge PET-CT System 8-Ring PET Gantry (Part no. 10749774) CT Gantry (Edge CT gantry for PET) (Part no. 10750761) – Water Cooled PET & CT gantries Gantry Filled to Standard Operating Level for Test Seismic Plates Part No. 10504127 (for anchorage) Unit Modified at test facility to address anomalies. These modifications were subsequently released in Siemens Seismic Install Kit, Part No. 10750045. Installed weight below includes 490lb Seismic Plates.					
MOUNTING:		Rigid Base (Floor) Mounted using (32) – ½” diameter SAE J429 Grade 8 bolts through seismic plates to interface frame.					
DIMENSIONS (in.)				LOWEST RESONANT FREQUENCY (Hz.)			
Width	Depth	Height	Weight (lb.)	Side-Axis	Front-Axis	Vertical-Axis	
92.3	53.5	80.2	6701 (SMS) 6855 (ETL)	11.15	6.48	21.43	
ICC-ES AC156 SHAKE TABLE TEST PARAMETERS							CODE: 2019 CBC
S _{DS}	z/h	I _p	A _{FLX-H}	A _{RIG-H}	A _{FLX-V}	A _{RIG-V}	
2.0	1	1.5	3.20	2.40	1.68	0.68	
2.5	0						
Unit maintained structural integrity and remained functional per manufacturer requirement.							



ATTACHMENT 2: SEISMIC CERTIFIED COMPONENTS

UUT D1817-2 ASM, CWC Cabinet						
MANUFACTURER: Siemens Medical Solutions USA, Inc.						
IDENTIFICATION: Model No.: 10749716 – Rev.06						
Serial No.: NONE						
DESCRIPTION: Component of the Biograph Vision 600 Edge PET-CT System Production Equivalent Unit CWC (Cooling Water Cabinet) Unit was filled with cooling fluid to normal operation level.						
MOUNTING: Rigid Base (Floor) Mounted using (4) – 1/2" diameter SAE J429 Grade 8 bolts. (2) – 1/4" thick ASTM A1011/A1011M external mounting brackets, each secured to cabinet w/ (4) – 3/8" SAE J429 Grade 5 bolts (P/N 10749716 and 10749598). This assembly ships with each unit.						
DIMENSIONS (in.)				LOWEST RESONANT FREQUENCY (Hz.)		
Width	Depth	Height	Weight (lb.)	Side-Axis	Front-Axis	Vertical-Axis
21.7	35.3	66.0	446 (Reported) 454 (Measured)	9.44	17.79	27.80
ICC-ES AC156 SHAKE TABLE TEST PARAMETERS						CODE: 2019 CBC
S _{DS}	z/h	I _p	A _{FLX-H}	A _{RIG-H}	A _{FLX-V}	A _{RIG-V}
2.0	1	1.5	3.20	2.40	1.68	0.68
2.5	0					
Unit maintained structural integrity and remained functional per manufacturer requirement.						

UUT D1817-3 Vision cPDU						
MANUFACTURER: Siemens Medical Solutions USA, Inc.						
IDENTIFICATION: Model No.: 10749598						
Serial No.: 563326						
DESCRIPTION: Component of the Biograph Vision 600 Edge PET-CT System cPDU (Common Power Distribution Unit) including: – MTE Corporation Power Conditioner (Part No. 6650014) – EATON 9PX 6000 UPS – EATON 9PX EMB Extended Battery Module – NETGEAR Prosafe 16 Port Gigabit Switch						
MOUNTING: Rigid Base (Floor) Mounted using (4) – 1/2" diameter SAE J429 Grade 8 bolts.						
DIMENSIONS (in.)				LOWEST RESONANT FREQUENCY (Hz.)		
Width	Depth	Height	Weight (lb.)	Side-Axis	Front-Axis	Vertical-Axis
21.7	35.4	66.3	951	9.13	10.91	26.73
ICC-ES AC156 SHAKE TABLE TEST PARAMETERS						CODE: 2019 CBC
S _{DS}	z/h	I _p	A _{FLX-H}	A _{RIG-H}	A _{FLX-V}	A _{RIG-V}
2.0	1	1.5	3.20	2.40	1.68	0.68
2.5	0					
Unit maintained structural integrity and remained functional per manufacturer requirement.						

ATTACHMENT 2: SEISMIC CERTIFIED COMPONENTS

UUT D1817-4 Image Control System (ICS) Tower 13E							
MANUFACTURER:		Fujitsu Technology Solutions GmbH					
IDENTIFICATION:		Model No.: 11062028 Serial No.: 1225					
DESCRIPTION:		Component of the Biograph Vision 600 Edge PET-CT System Fujitsu Celsius W550 Power M15W					
MOUNTING:		Rigid Base (Floor) Mounted using: using (2) strap sets, each consisting of 1" wide nylon strap w/ metal cinch (200 lb WLL) looped through slots in vertical legs of (2) – L2½ x 2½ x ¼ x 0'-2½" brackets positioned snug against unit. Each bracket attached w/ 3/8" dia. ASTM A574 Socket Head Cap Screws threaded into aluminum plate.					
DIMENSIONS (in.)				LOWEST RESONANT FREQUENCY (Hz.)			
Width	Depth	Height	Weight (lb.)	Side-Axis	Front-Axis	Vertical-Axis	
6.9	16.5	15.1	26	44.72	44.64	>50	
ICC-ES AC156 SHAKE TABLE TEST PARAMETERS							CODE: 2019 CBC
S _{DS}	z/h	I _p	A _{FLX-H}	A _{RIG-H}	A _{FLX-V}	A _{RIG-V}	
2.0	1	1.5	3.20	2.40	1.68	0.68	
2.5	0						
Unit maintained structural integrity and remained functional per manufacturer requirement.							



UUT-E1926-1 Biograph Vision 450 (6 Ring/AS 64) Gantry							
Manufacturer:		Siemens Medical Solutions USA, Inc.					
Identification:		Part No.: 10749669					
Description:		Component of the Biograph Vision 450 PET/CT System - Includes use of Seismic Plates 10504127 - Installed weight below includes 490lb Seismic Plates. - Includes System Level Seismic Installation Kit 10750045 (NOT LABELED) which includes the X-Axis Translation Bracket 10748911					
Mounting:		Rigid Base (Floor) Mounted using: (32) -1/2" dia SAE J429 Grade 8 bolts.					
Dimensions (in.)				Lowest Resonant Frequency (Hz.)			
Width	Depth	Height	Weight (lb.)	Side-Axis	Front-Axis	Vert-Axis	
92.3	52.8	80.1	6639	9.1	7.4	22.1	
ICC-ES AC156 Shake Table Test Parameters							Code: 2019 CBC
S _{DS} (G)	z/h	I _p	A _{FLX-H} (G)	A _{RIG-H} (G)	A _{FLX-V} (G)	A _{RIG-V} (G)	
2.0	1	1.5	3.2	2.4	1.68	0.68	
2.5	0						
Unit satisfied AC156 requirements for structural integrity and manufacturer requirements for functionality after AC156 test.							



ATTACHMENT 2: SEISMIC CERTIFIED COMPONENTS

UUT-E1926-2 POWER DISTRIBUTION CABINET (PDC) WITH CABLE MANAGEMENT RACK						
<i>Manufacturer:</i>		Siemens Medical Solutions USA, Inc.				
<i>Identification:</i>		Part No.: 08366465				
<i>Description:</i>		Component of the Biograph Vision 450 PET/CT System and other system in the Biograph Vision PET/CT Family PDC with the addition of - Cable Management Rack - Part No.: 10530286 (NOT LABELED) Weight below includes Cable Management Rack (42 LB) and Cables (126 LB)				
<i>Mounting:</i>		<u>Wall/Floor Mounted</u> using: (4) - 1/2" dia. SAE J429 Grade 8 bolts at base. 7ga. AISI 316 (SS) upper bracket (P/N 10750284) w/ (8) - 1/4" dia. Hex Washer Head Self-drilling steel screws to 16ga. steel wall backing plate (with additional washers) (2)- M12 -Class 4.6 bolts to top of cabinet (with washers)				
Dimensions (in.)				Lowest Resonant Frequency (Hz.)		
Width	Depth	Height	Weight (lb.)	Side-Axis	Front-Axis	Vert-Axis
35.4	32.2	76.8	1326	8.51	7.99	18.65
ICC-ES AC156 Shake Table Test Parameters						Code: 2019 CBC
S _{DS} (G)	z/h	I _p	A _{FLX-H} (G)	A _{RIG-H} (G)	A _{FLX-V} (G)	A _{RIG-V} (G)
2.0	1	1.5	3.2	2.4	1.68	0.68
2.5	0					
Unit satisfied AC156 requirements for structural integrity and manufacturer requirements for functionality after AC156 test.						



UUT-E1926-3 IMAGE RECONSTRUCTION SYSTEM (IRS) mx5b						
<i>Manufacturer:</i>		Supermicro				
<i>Identification:</i>		Part No.: 10590111				
<i>Description:</i>		Component of the Biograph Vision 450 PET/CT System and other system in the Biograph Vision PET/CT Family Supermicro Model 743-8 P/N PIO-748R-SMC06-SM005				
<i>Mounting:</i>		Rigid Base (Floor) Mounted using: (2) strap sets, each consisting of: 1" wide nylon strap w/ metal cinch (200 lb WLL) looped through slots in vertical legs of (2) - L2 1/2" x 2 1/2" x 1/4" x 0'-2 1/2" steel brackets positioned snug against unit. Each bracket attached w/ 3/8" dia. ASTM A574 Socket Head Cap Screws w/ washer threaded into interface plate.				
Dimensions (in.)				Lowest Resonant Frequency (Hz.)		
Width	Depth	Height	Weight (lb.)	Side-Axis	Front-Axis	Vert-Axis
8.5	25.5	17.5	61.5	22.17	>50	42.09
ICC-ES AC156 Shake Table Test Parameters						Code: 2019 CBC
S _{DS} (G)	z/h	I _p	A _{FLX-H} (G)	A _{RIG-H} (G)	A _{FLX-V} (G)	A _{RIG-V} (G)
2.0	1	1.5	3.2	2.4	1.68	0.68
2.5	0					
Unit satisfied AC156 requirements for structural integrity and manufacturer requirements for functionality after AC156 test.						



ATTACHMENT 2: SEISMIC CERTIFIED COMPONENTS

UUT-E1926-4 IMAGE RECONSTRUCTION SYSTEM (IRS) mx5c							
<i>Manufacturer:</i>		Supermicro					
<i>Identification:</i>		Part No.: 10590112					
<i>Description:</i>		Component of the Biograph Vision 450 PET/CT System and other system in the Biograph Vision PET/CT Family Supermicro Model 743-8 P/N PIO-748R-SMC07-SM005					
<i>Mounting:</i>		Rigid Base (Floor) Mounted using: (2) strap sets, each consisting of: 1" wide nylon strap w/ metal cinch (200 lb WLL) looped through slots in vertical legs of (2) – L2½" x 2½" x ¼" x 0'-2½" steel brackets positioned snug against unit. Each bracket attached w/ 3/8" dia. ASTM A574 Socket Head Cap Screws w/ washer threaded into interface plate.					
Dimensions (in.)				Lowest Resonant Frequency (Hz.)			
Width	Depth	Height	Weight (lb.)	Side-Axis	Front-Axis	Vert-Axis	
8.5	25.5	17.5	57	15.01	38.62	>50	
ICC-ES AC156 Shake Table Test Parameters							Code: 2019 CBC
S _{DS} (G)	z/h	I _P	A _{FLX-H} (G)	A _{RIG-H} (G)	A _{FLX-V} (G)	A _{RIG-V} (G)	
2.0 2.5	1 0	1.5	3.2	2.4	1.68	0.68	
Unit satisfied AC156 requirements for structural integrity and manufacturer requirements for functionality after AC156 test.							



UUT-E2002-1 POWER DISTRIBUTION COMPUTER CABINET (PDCC)							
<i>Manufacturer:</i>		Siemens Medical Solutions USA, Inc.					
<i>Identification:</i>		Part No.: 11519082					
<i>Description:</i>		Component of the Biograph Horizon PET-CT System. Includes the following sub-components: MARS Z8G4 (10752891), IRS (11268053), (QTY 2) UPS 9Px5000 (10530975), EtherPET Switch (10749750)					
<i>Mounting:</i>		Rigid Base (Floor) Mounted using: (12) -3/8" dia SAE J429 Grade 5 bolts.					
Dimensions (in.)				Lowest Resonant Frequency (Hz.)			
Width	Depth	Height	Weight (lb.)	Side-Axis	Front-Axis	Vert-Axis	
44.0	35.0	63.84	1226.5	6.65	14.63	> 50	
ICC-ES AC156 Shake Table Test Parameters							Code: 2019 CBC
S _{DS} (G)	z/h	I _P	A _{FLX-H} (G)	A _{RIG-H} (G)	A _{FLX-V} (G)	A _{RIG-V} (G)	
2.0	1	1.5	3.20	2.40	1.34	0.54	
Unit satisfied AC156 requirements for structural integrity and manufacturer requirements for functionality after AC156 test.							



ATTACHMENT 2: SEISMIC CERTIFIED COMPONENTS

UUT-E2002-2 IMAGE CONTROL SYSTEM (ICS) 13B						
<i>Manufacturer:</i>		Fujitsu				
<i>Identification:</i>		Part No.: 11062026				
<i>Description:</i>		Component of the Biograph Horizon PET-CT System Fujitsu Product: Celsius W550 Power Model: MI5W P/N: CUZ:1445V420-FS091				
<i>Mounting:</i>		Rigid Base (Floor) Mounted using: (2) strap sets, each consisting of: 1" wide nylon strap w/ metal cinch (200 lb WLL) looped through slots in vertical legs of (2) – L2½" x 2½" x ¼" x 0'-2½" steel brackets positioned snug against unit. Each bracket attached w/ 3/8" dia. ASTM A574 Socket Head Cap Screws w/ washer threaded into interface plate.				
Dimensions (in.)				Lowest Resonant Frequency (Hz.)		
Width	Depth	Height	Weight (lb.)	Side-Axis	Front-Axis	Vert-Axis
6.9	16.5	15.6	26.5	37.50	> 50	> 50
ICC-ES AC156 Shake Table Test Parameters						Code: 2019 CBC
S _{DS} (G)	z/h	I _p	A _{FLX-H} (G)	A _{RIG-H} (G)	A _{FLX-V} (G)	A _{RIG-V} (G)
2.0	1	1.5	3.20	2.40	1.34	0.54
Unit satisfied AC156 requirements for structural integrity and manufacturer requirements for functionality after AC156 test.						



DATE: 02/08/2021

