

Health Care Payments Data Program Submitter Group

October 14, 2021

Welcome and Key Program Updates

Starla Ledbetter, Chief Data Office, HCAI

Today's Agenda

- Welcome and Key Program Updates
- HPD Platform Vendor Introduction
- 2022 Timeline for HPD Data Submissions
- Submitter Outreach
- Adjournment

HPD Platform Vendor Introduction

Starla Ledbetter, Chief Data Office, HCAI

Joanna Duncan, Onpoint

Gina Robertson, Onpoint

Taylor Vaillancourt, Onpoint

About Onpoint

- Independent nonprofit
- Based in Portland, ME
- Frontrunner in APCD development and support
- Team with deep technical expertise
- CA market expertise (with support of IHA)
- Innovator in APCD analytics



Onpoint Team Members

Executive
Sponsor



Jim Harrison
*President &
CEO*

Project
Manager



Carolynne Conrad
*Senior Client
Account Manager*

Senior
Advisor



Joanna Duncan
*Chief Operating
Officer*

Submitter
Liaison



Gina Robertson
*Data Operations
Manager*

Submitter
Support



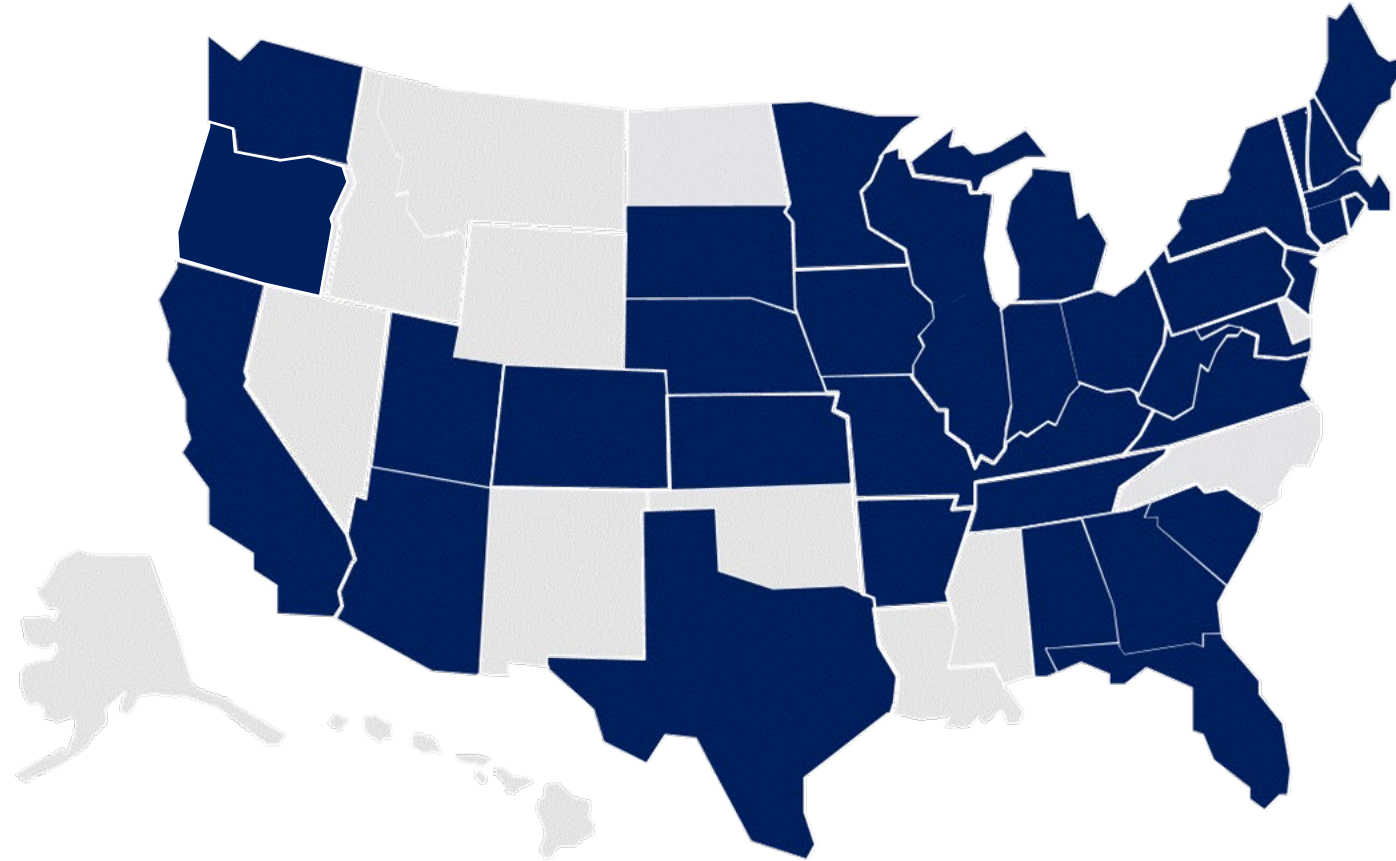
**Taylor
Vaillancourt**
Operations Analyst

Supporting APCD Clients in 10 States + CMS



Supporting 250 Health Plans Across Country

- Across 37 states
- Including 16 here in California



Submitter Onboarding

“Onpoint provided very complete guidance on connecting to their submission portal and making submissions. Bravo for good documentation.”

Col. #	Field ID	Field Name	Type	Max.	Description/C
13	MC011	Member Relationship Code	Text	2	Use this field t Notes: The val ("Member Rel Standards Con
14	MC012	Member Gender Code	Text	1	Use this field t F = Female M = Male U = Unknown Notes: The val ("Member Ge
15	MC013	Member Date of Birth	Date	8	Use this field t January 18, 20 Notes: The val ("Member Da
16	MC014	Member City	Text	30	Use this field t
17	MC015	Member State	Text	2	Use this field t by the U.S. Po
18	MC016	Member ZIP Code	Text	9	Use this field t Notes: If avail not code dash
19	MC017	Paid Date	Date	8	Use this field t format of CCY Notes: This da nonpayment,
20	MC018	Admission Date	Date	8	Use this field t CCYYMMDD (

Submitter
Liaison



Gina Robertson
*Data Operations
Manager*

Submitter
Support



Taylor Vaillancourt
Operations Analyst

Key Implementation Steps

1

Registering
to submit
data to the
HPD
Platform

2

Setting up
for file
transfer
and
encryption

3

Using the
Claims Data
Manager
(CDM)

4

Getting
started
with the
APCD-CDL
and DSG

5

Joining
one-on-one
onboarding
meetings

6

Reaching
Onpoint
for
support

Registering to Submit Data to the HPD Platform

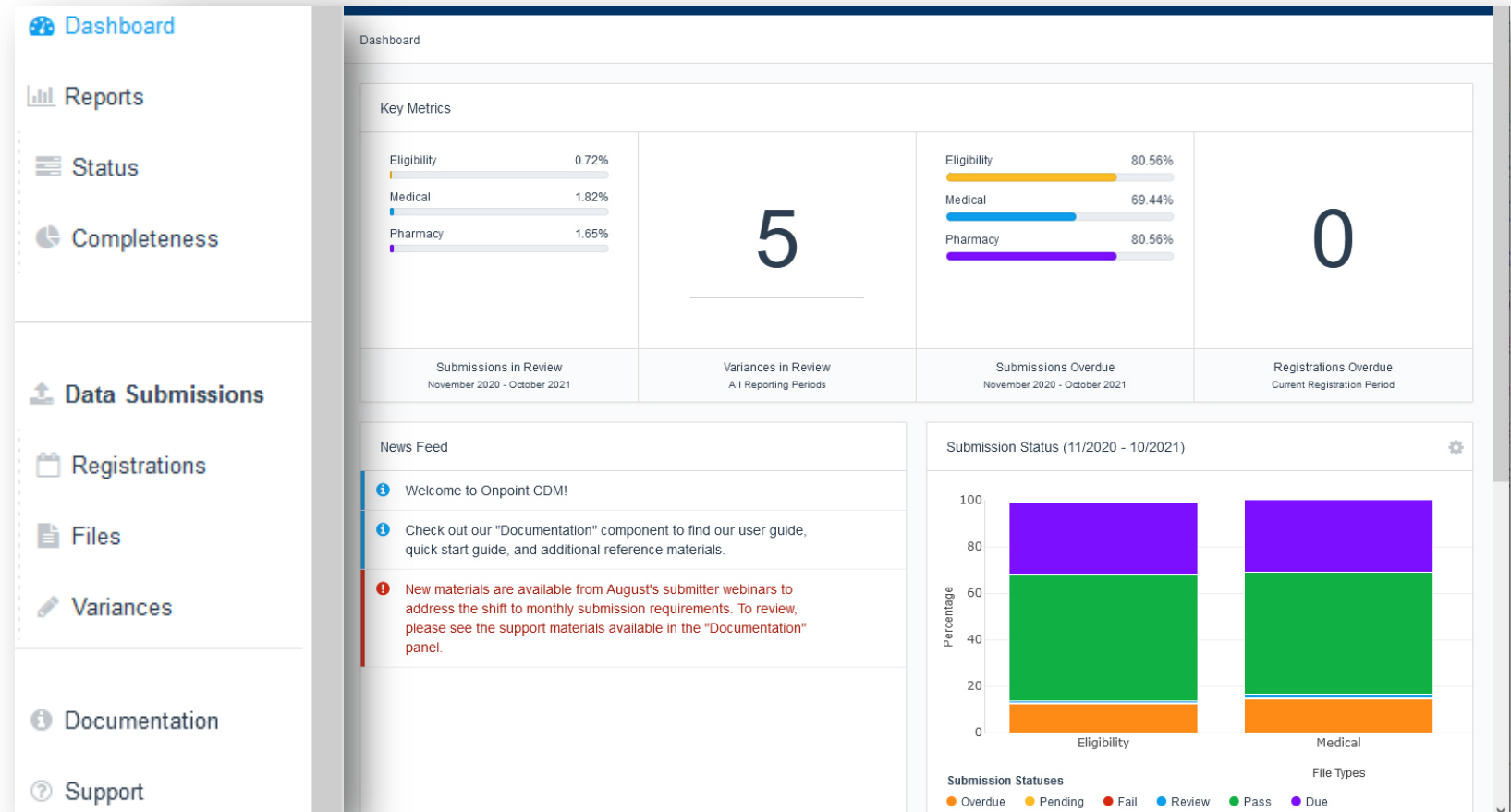
- Registration helps us identify...
 - Key contacts
 - TPA, PBM, and carve-out relationships
- Getting started
 - Register online in Q1/2022
 - Save your progress at any time
 - Download a PDF version ahead of time

Setting Up for File Transfer & Encryption

- Upcoming webinar will...
 - Discuss requirements for Secure File Transfer Protocol (SFTP) and Pretty Good Privacy (PGP) encryption
 - Offer an overview of the process
 - Review the key exchange and testing steps
 - Provide SFTP registration information
 - Answer any questions

Using the Claims Data Manager (CDM)

- Submit data
- Review quality and completeness
- Request variances
- Update your contacts
- Get 24x7 support / documentation



Using the Claims Data Manager (CDM) (cont.)

- Upcoming webinar will...
 - Provide data submitters with insight into the CDM portal and processing solution
 - Introduce the submitter portal for self-service reporting on file status and data quality
 - Review the variance process and next steps

Getting Started with the APCD-CDL™ & DSG

B- Eligibility					
NEW CDL Data Element #	Data Element Name	Type	Max Length	Description/ Codes/ Sources	ASC X12 271 and 834 References
CDLME001	Data Submitter Code	varchar	8	APCD-assigned identifier of payer submitting data file. Code assigned to the plan by the APCD registration system (may be multi-tiered to support different platforms). This may or may not be the same code used in the Payer Code field.	N/A
CDLME002	Payer Code	varchar	8	APCD-assigned identifier of insurer in the case of premiums-based coverage, or of the administrator in the case of self-funded coverage. Code assigned to the plan by the APCD registration system (may be multi-tiered to support different platforms).	N/A
CDLME003	Plan ID	varchar	30	CMS National Plan ID. The National Plan ID is a code assigned by CMS. (PLACEHOLDER)	271/2100A/NM1 / XV/09

Joining One-on-One Onboarding Meetings

- Our team will...
 - Schedule one-on-one meetings with any data submitter that has additional questions
 - Explore specifics and nuances directly related to you and your data systems
 - Help identify any limitations and proactively address any concerns

Reaching Onpoint for Support

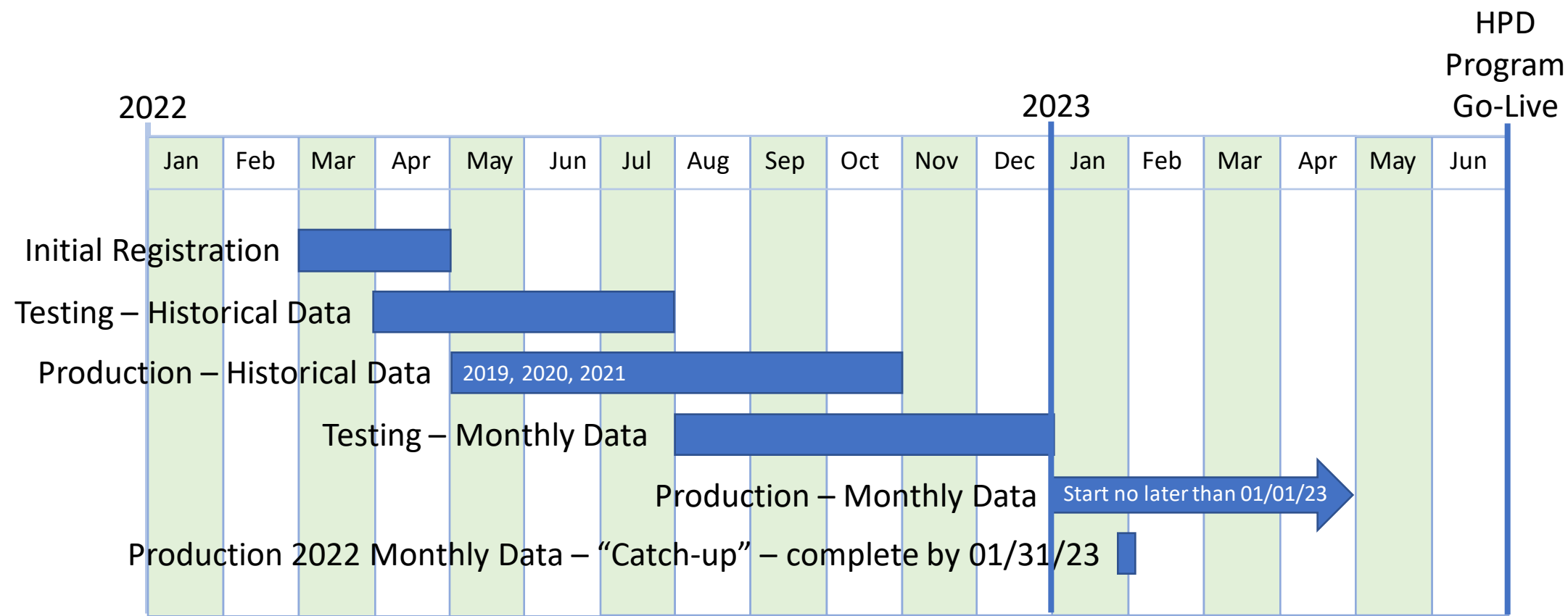
- Documentation available 24x7
- Team of experienced Data Operations Analysts
- Support will always be one click, phone call, or email away

Thank you.



2022 Timeline for HPD Data Submissions

Greg Dawson, HPD Consultant

2022 Draft Timelines



Registration

- Plans and submitters should register by April 29, 2022
- There are two different types of entity registration:
 - Who is responsible for the data: 
 - This will include CA Department of Managed Health Care (DMHC) and CA Department of Insurance (CDI) licensees, and self-insured entities
 - Who is submitting the data to HPD: 
 - This could be a health plan, a contracted entity or a parent organization

Plan Registration



Plan

- Entity responsible for the data
- Register at the license level for DMHC and CDI licensees
- Provide the following type of information:
 - Legal name of the entity and address
 - Information about the entity type, the types of product and lines of business
 - License numbers
 - Regulatory and business contacts
 - The submitters who will be submitting the data
- Once registration is complete, the entity will receive a Payer Code to use in data submission

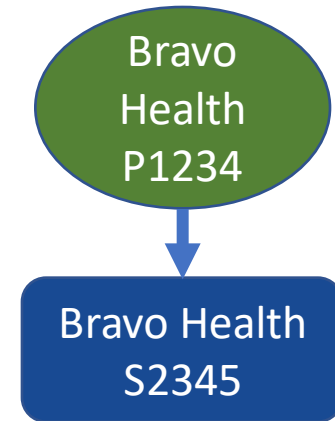
Submitter Registration

Submitter

- Entity who is submitting the data
- Each submitter need only register once, regardless of how many plans they will be submitting data for
- Provide the following type of information:
 - Legal name of the entity and address
 - At least two technical contacts
 - All of the Payer Codes submitting data for, including the types of data files to be submitted for each
- Once registration is complete, the entity will receive a Submitter Code to use in data submission

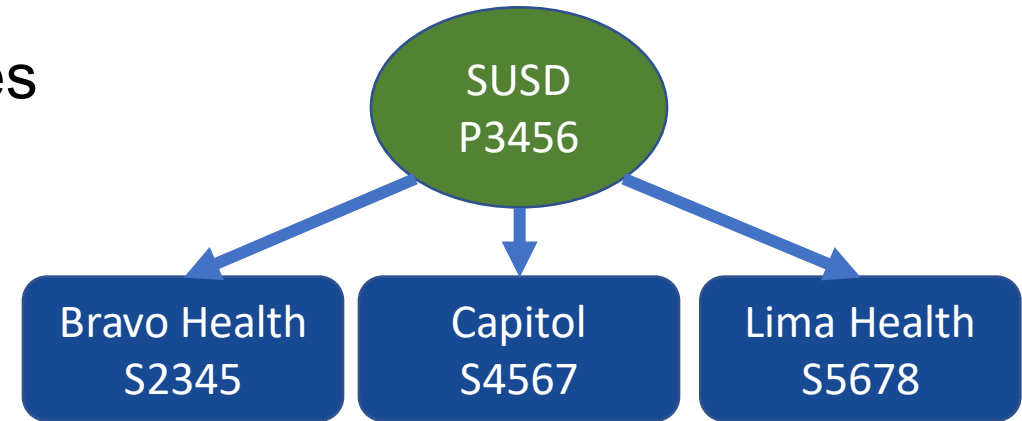
Registration Scenarios – One to One

- Bravo Health
 - Licensed Plan with DMHC
 - Intends to submit their own data
 - Registers as a “Plan” with Plan Code = “P1234”
 - Must also register as a Submitter
 - Is assigned Submitter Code = “S2345”



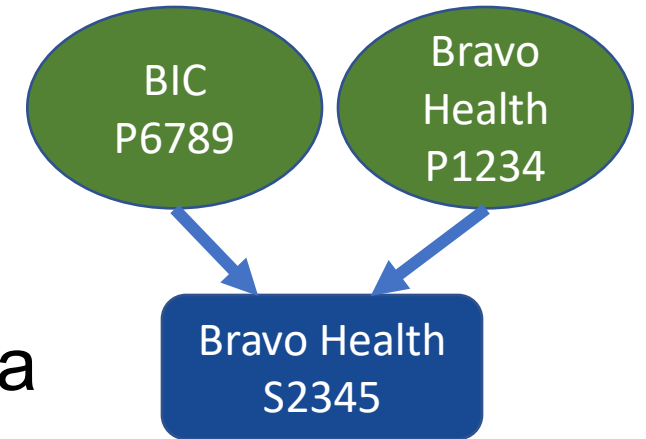
Registration Scenarios – One to Many

- Smallville Unified School District (SUSD)
 - Public self-insured with 41,000 covered lives
 - Contracts with:
 - Bravo Health (Medical)
 - Capitol Pharmacy (Pharmacy)
 - Lima Health (Behavioral)
 - SUSD registers as a “Plan” with Plan Code = “P3456”
 - Capitol Pharmacy must register as a submitter, assigned “S4567”
 - Lima Health must register as a submitter, assigned “S5678”
 - Bravo Health is already registered as a submitter

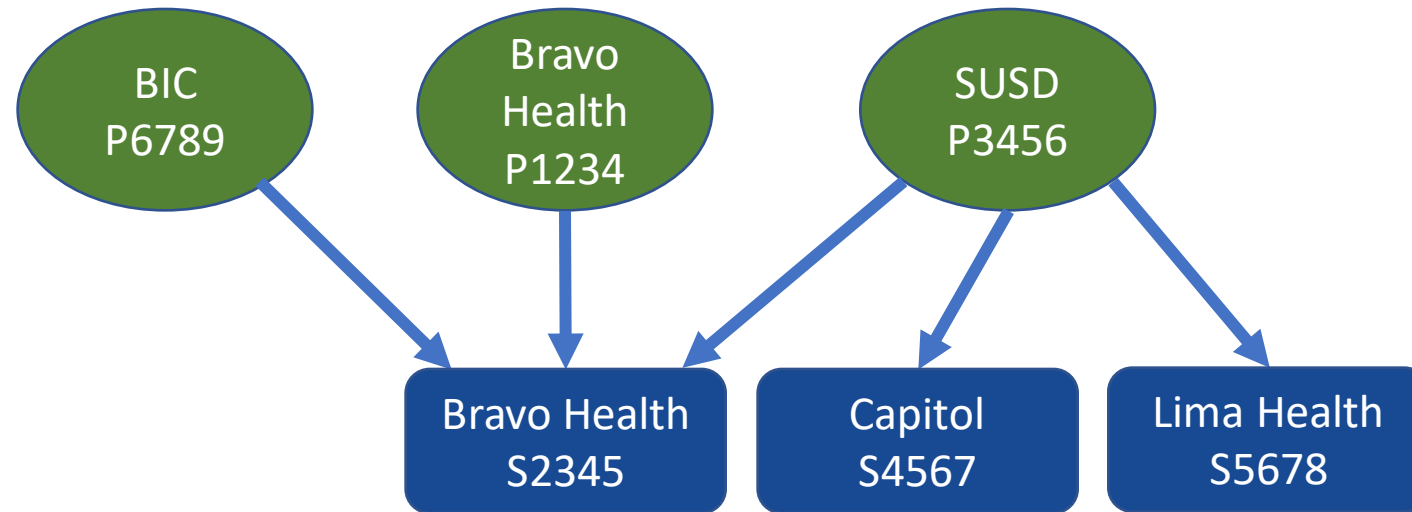


Registration Scenarios – Many to One

- Bravo Insurance Company (BIC)
 - Owned by Bravo Health
 - BIC holds a license with CDI
 - Intends to have the parent company submit data
 - BIC must register as a “Plan” assigned “P6789”
 - Bravo Health is already registered as a submitter (S2345)
- Bravo Health is already registered as a plan “P1234”



Registration Scenarios Summary



Testing Historical Data

- Testing for historical data submission can start once registration is complete, as early as April 2022 but must be completed by July 29, 2022
- Suggested test cases will be available for submitters to use
- Submitters can submit test data, modified production data or a full production dataset
- Test files are identified by CDLHD008 = “T”

Production Submission - Historical Data

- Production submission for 2019, 2020 and 2021 data can start once registration is complete, as early as May 1, 2022 and must be completed by October 28, 2022
- Data files may be submitted in month or yearly increments, contact HCAI with questions on any volume concerns that a submitter may have

Testing - Monthly Data

- Testing for monthly data submissions can start once registration is complete and must be completed by December 31, 2022
- Suggested test cases will be available for submitters to use
- Submitters can submit test data, modified production data or a full production dataset
- Test files are identified by CDLHD008 = “T”

Production Submission - Monthly Data

- Monthly production submission can start once testing is complete and must be implemented by January 1, 2023

Production Submission – 2022 Catch-Up

- 2019, 2020 and 2021 data must be submitted by 10/28/2022
- Monthly Production submission must be implemented by 01/01/2023
- 2022 catch-up data is for January 2022 through the month before when monthly production submission starts
- This must be accepted before 02/01/2023

Submitter Outreach

Greg Dawson, HPD Consultant

Outreach Status

- HCAI has met with:
 - All mandatory commercial submitters
 - A number of public self-insured entities (Non-ERISA)
 - Administrative Services Only (ASO) submitters

Types of Outreach

- Introductory Meeting (32)
 - Introduce HPD
 - Overall timeline
- Technical Meeting (16)
 - APCD CDL
 - Platform vendor
 - Edits
 - Detailed timeline
- Walkthrough of the Intake Specifications (12)

Next Phase

- Submitter Check-In (Oct-Dec)
 - Follow-up on any questions
 - Introduce Onpoint Health Data and HCAI staff
 - Review submitter timeline
- Submitter Training (Dec-Feb)
 - Registration
 - File Submission

Available Documentation

- HPD Emergency Regulations
- Data Submission Guide (Incorporated in the Emergency Regulations)
 - Includes Intake Specifications
- HPD Reporting Manual (under development)
- APCD CDL [™] specifications

Thank you.

Adjournment