

BLD-00664 - Radiology and Surgery Addition - Bldg 02
OSHPD 1 - SPC 3s NPC 2

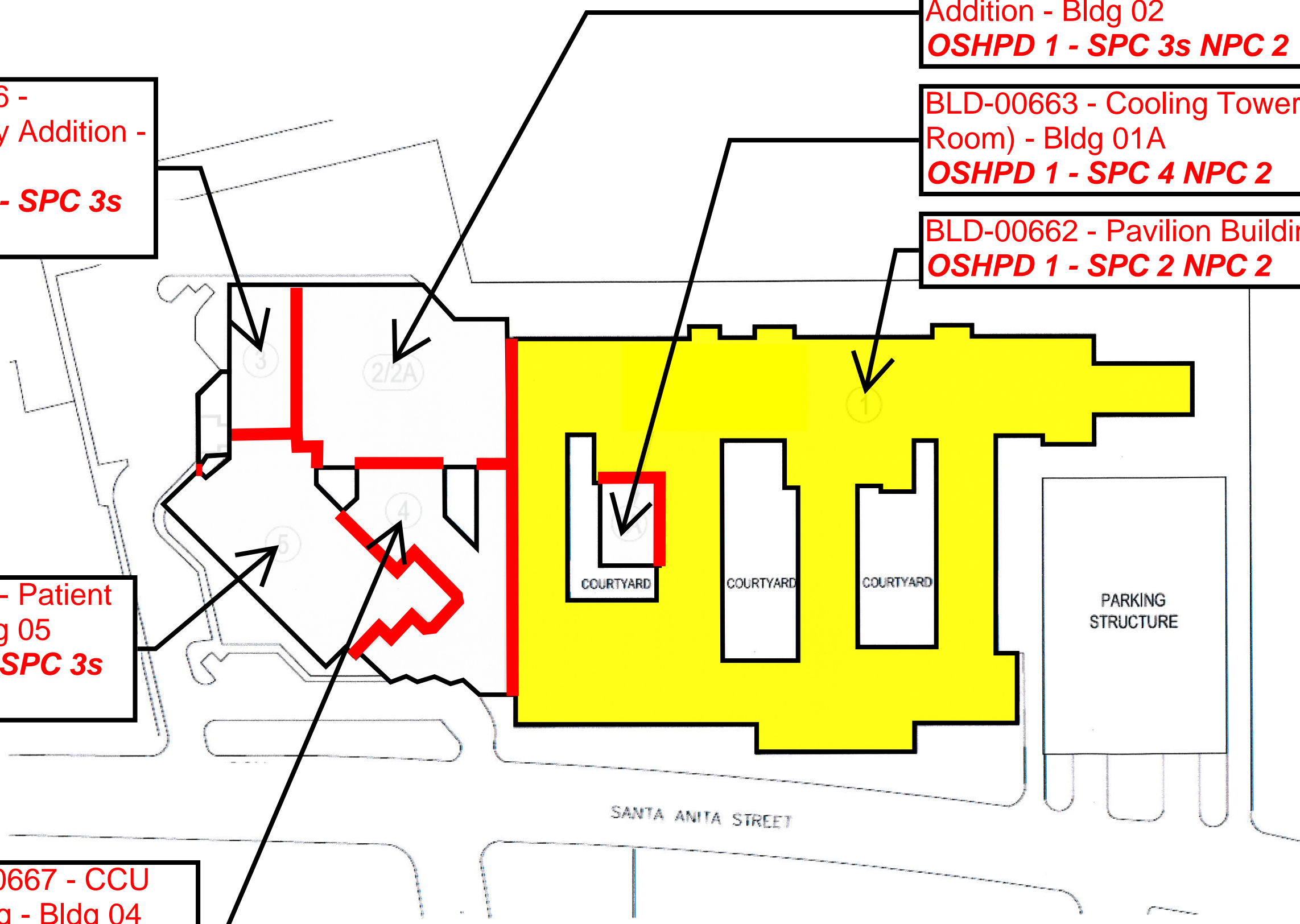
BLD-00663 - Cooling Tower (Chiller Room) - Bldg 01A
OSHPD 1 - SPC 4 NPC 2

BLD-00662 - Pavilion Building - Bldg 01
OSHPD 1 - SPC 2 NPC 2

BLD-00666 - Emergency Addition - Bldg 03
OSHPD 1 - SPC 3s NPC 2

BLD-00668 - Patient Tower - Bldg 05
OSHPD 1 - SPC 3s NPC 2

BLD-00667 - CCU Building - Bldg 04
OSHPD 1 - SPC 3s NPC 2



LEGEND:
OSHPD 1
OSHPD 1 - SPC 1 or SPC 2
Seismic Separation

**San Gabriel Valley Medical Center
Facility No. 11548**