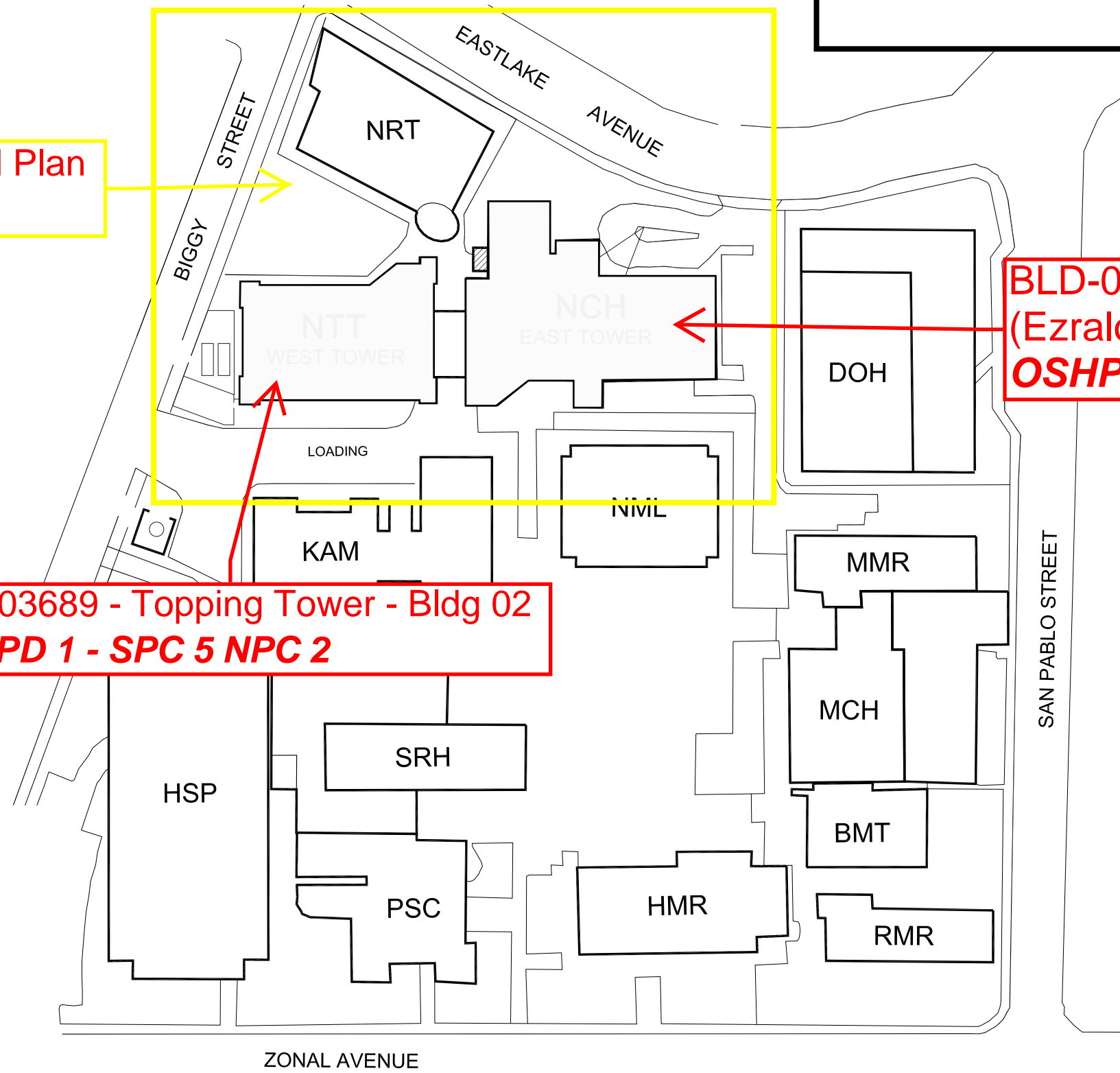


Usc Kenneth Norris Jr. Cancer Hospital Facility No. 15179

4/15/2026

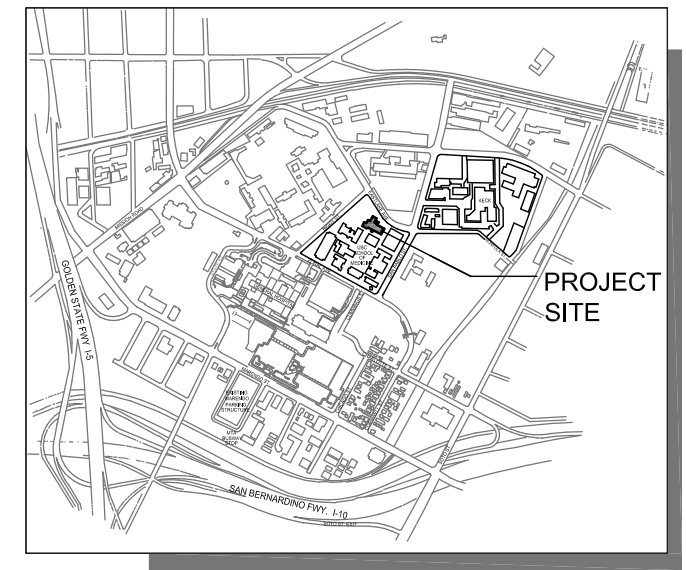
For Enlarged Plan
See Page 2



**BLD-00317 - Cancer Research Institute
(Ezralow Tower) - Bldg 01
OSHPD 1 - SPC 3 NPC 3**

**BLD-03689 - Topping Tower - Bldg 02
OSHPD 1 - SPC 5 NPC 2**

LEGEND:
OSHPD 1
Seismic Separation

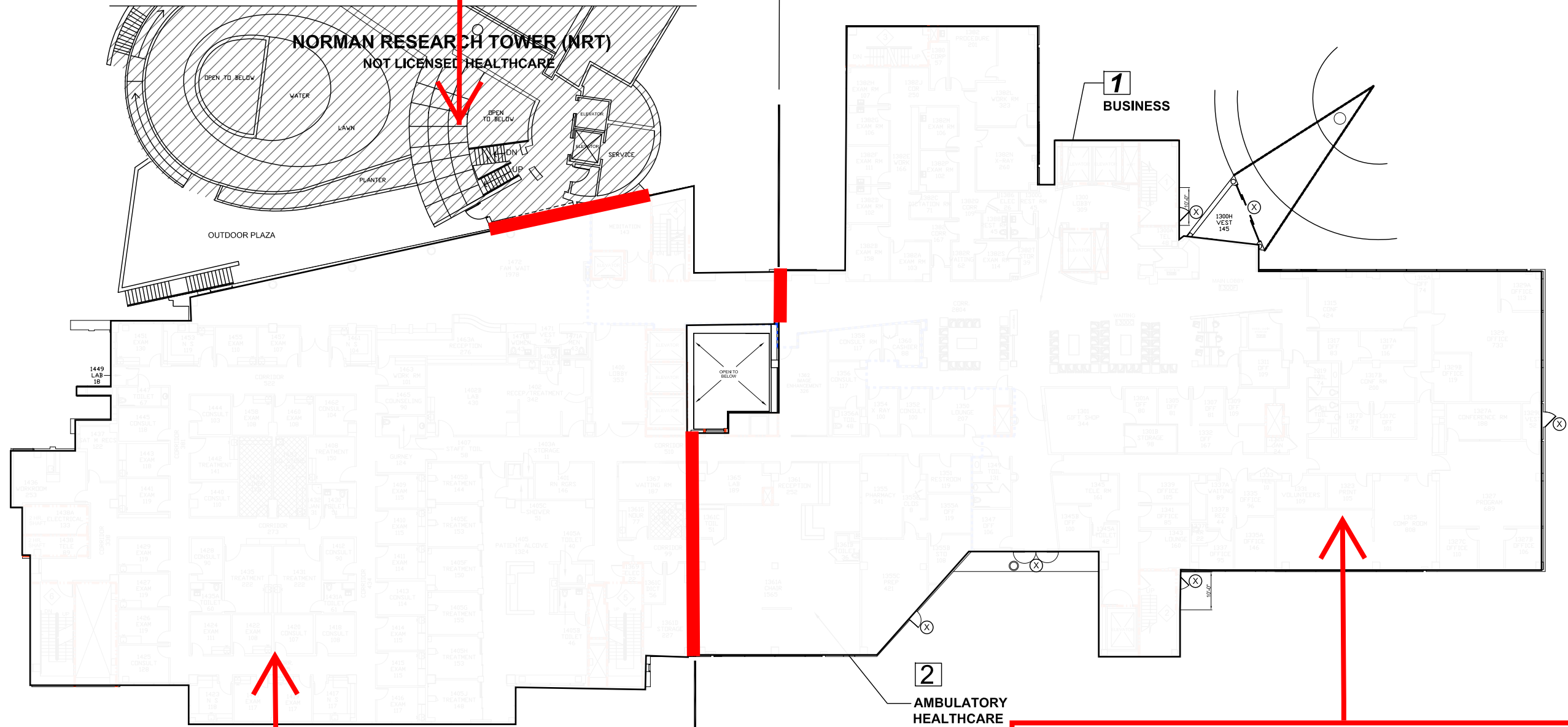


NORTH

SITE PLAN
SHOWN FOR REFERENCE
SCALE: NTS

Usc Kenneth Norris Jr. Cancer Hospital Facility No. 15179

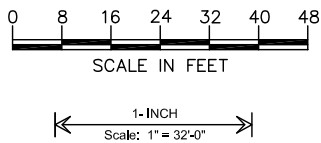
For This Area,
See Page 3



BLD-03689 - Topping Tower - Bldg 02
OSHPD 1 - SPC 5 NPC 2

BLD-00317 - Cancer Research Institute (Ezralow Tower) - Bldg 01
OSHPD 1 - SPC 3 NPC 3

FIRST FLOOR PLAN

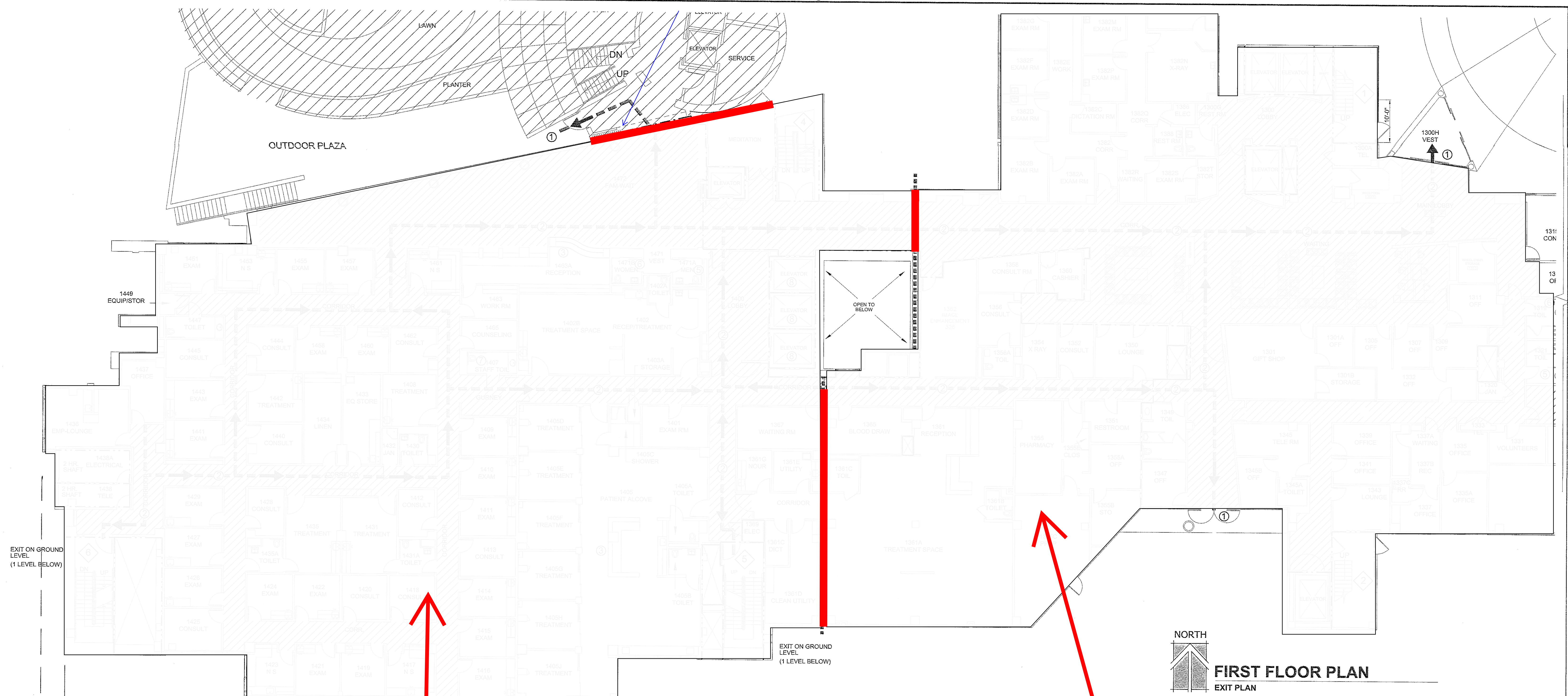


LEGEND:

OSHPD 1

Seismic Separation

WAN door between both buildings



BLD-03689 - Topping Tower - Bldg 02
OSHPD 1 - SPC 5 NPC 2

BLD-00317 - Cancer Research Institute (Ezralow Tower) - Bldg 01
OSHPD 1 - SPC 3 NPC 3

Usc Kenneth Norris Jr. Cancer Hospital Facility No. 15179

LEGEND:

- OSHPD 1
- Seismic Separation

SCALE: 3/32" = 1'-0"