

BLD-02534 - Valleycare (New)
Addition - Bldg 03
OSHPD 1 - SPC 5 NPC 4

BLD-02533 - Central Plant -
Bldg 02
OSHPD 1 - SPC 5 NPC 2

BLD-07317 - NPC-5 Potable
Water Storage Tank Enclosure
- Bldg 10
OSHPD 1 - Future

BLD-02532 - Hospital
Ambulatory Care & Inc. II - Bldg
01
OSHPD 1 - SPC 3 NPC 2

BLD-06566 - Emergency
Generator Set - Bldg 07
**OSHPD 1 - Under
Construction**

BLD-07315 - East Wing
Hospital Addition - Bldg 08
OSHPD 1 - Future

BLD-06430 - Ambulance Drop
Off Canopy - Bldg 06
OSHPD 1 - SPC 5 NPC 4

BLD-07316 - Canopy - Bldg 09
OSHPD 1 - Future

BLD-02903 - Arcade - Phase II -
Portion 2 - Bldg 04B2
OSHPD 1 - SPC 2 NPC 2

BLD-02701 - Porte Cochere -
Bldg 05
OSHPD 1 - SPC 5 NPC 4

BLD-02699 - Arcade - Phase I -
Portion 1 - Bldg 04A1
OSHPD 1 - SPC 2 NPC 2

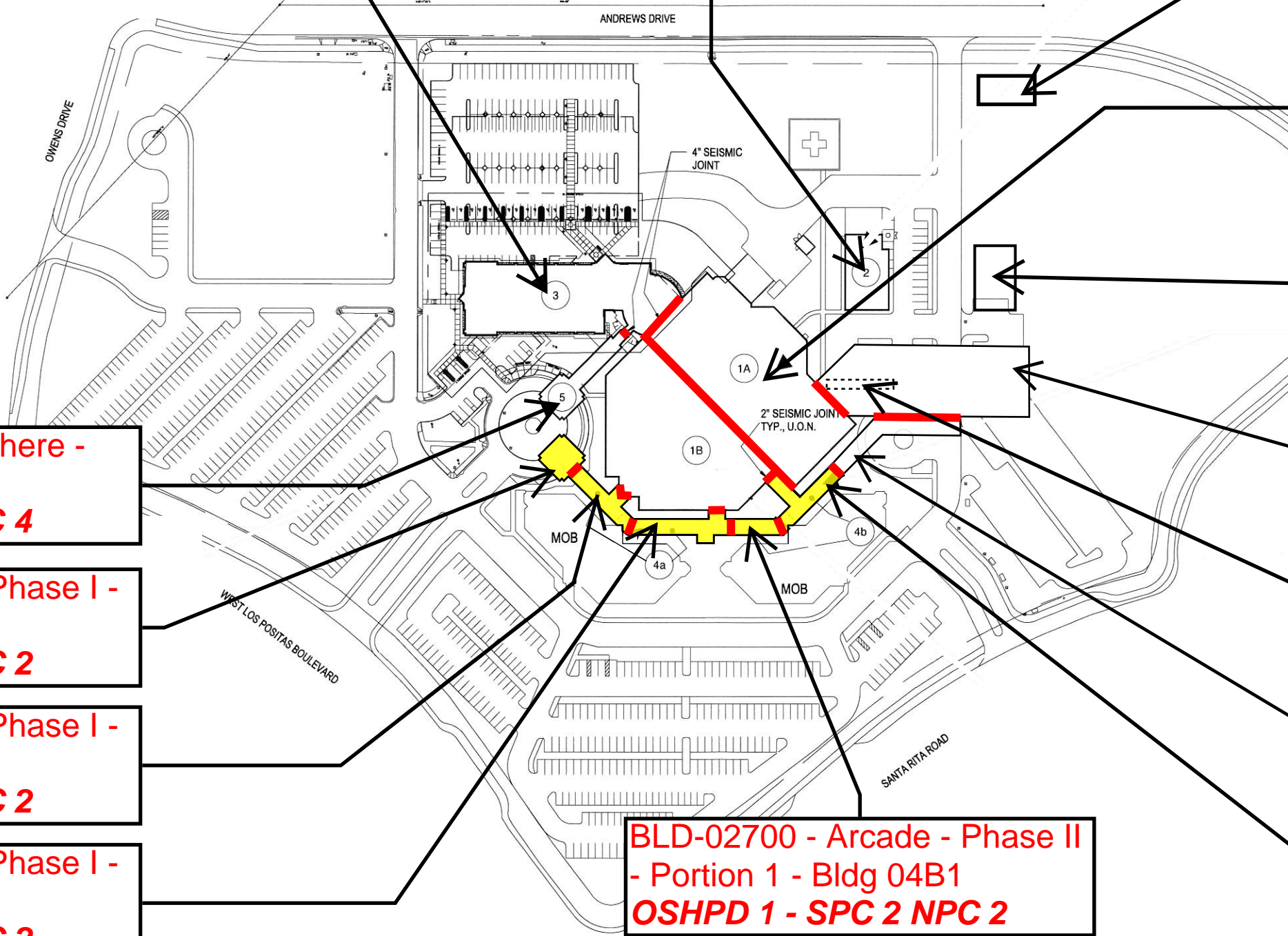
BLD-02901 - Arcade - Phase I -
Portion 2 - Bldg 04A2
OSHPD 1 - SPC 2 NPC 2

BLD-02902 - Arcade - Phase I -
Portion 3 - Bldg 04A3
OSHPD 1 - SPC 2 NPC 2

BLD-02700 - Arcade - Phase II
- Portion 1 - Bldg 04B1
OSHPD 1 - SPC 2 NPC 2

Stanford Health Care Tri-Valley Facility No. 16632

8/28/2025



LEGEND:

OSHPD 1

OSHPD 1 - SPC 1 or SPC 2

Seismic Separation

© 6/13/2025 6:55:16 PM TAYLOR & ASSOCIATES ARCHITECTS, IF THIS DRAWING IS NOT 24x36 IT HAS BEEN MODIFIED

NPC 5 EMERGENCY WASTEWATER DIVERTING DURING AN EMERGENCY :

- FACILITY SHALL MANUALLY CLOSE ISOLATION VALVE ON CITY SEWER PIPE IN THE MANHOLE 5. STOP WASTEWATER FLOW TO CITY SEWER. OPEN THE ISOLATION VALVE ON THE EMERGENCY SEWER PIPE, DISCHARGE TO THE UNDERGROUND NPC 5 EMERGENCY WASTE WATER HOLDING TANK IN A DISASTER EVENT.
- FACILITY SHALL MANUALLY CLOSE ISOLATION VALVES ON THE MOB SEWER PIPES IN MANHOLE 3 AND 4. MOB WILL BE TEMPORARILY CLOSED DUE TO WATER INTERRUPTION AND SEWER BREAKS IN A DISASTER EVENT.

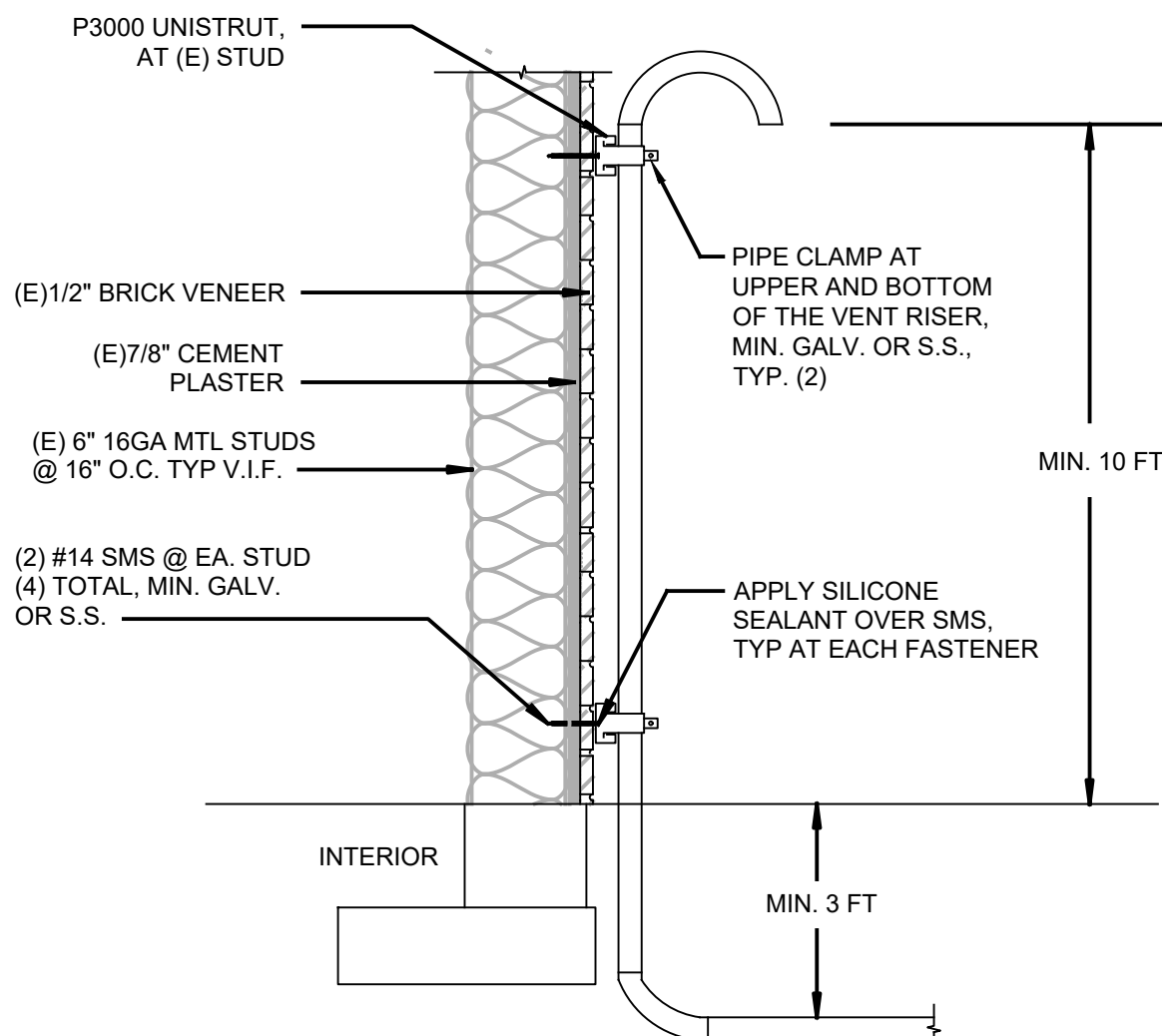
SHEET NOTES:

- (A) (E) SEWER PIPE FROM MOB TO REMAIN.
- (B) SEWER DIVERSION MANHOLE. SEE DETAIL 1/P1601. FACILITY SHALL MANUALLY CLOSE THE ISOLATION VALVE ON THE MOB SEWER PIPE IN AN EMERGENCY.
- (C) SEWER DIVERSION MANHOLE. SEE DETAIL 1/P1601. CITY SEWER SHALL BE FULLY OPENED AND EMERGENCY SEWER SHALL BE CLOSED DURING NORMAL OPERATION. FACILITY SHALL MANUALLY CLOSE THE ISOLATION VALVE ON THE CITY SEWER PIPE, AND OPEN THE ISOLATION VALVE ON THE EMERGENCY SEWER PIPE IN AN EMERGENCY.
- (D) (N) 4" DCW SUPPLY WITH BUILDING INTER-CONNECTED VALVE. SEE CIVIL DWG DETAIL 1/C1700 FOR UG VALVE BOX DETAIL.
- (E) (E) 8" SS TO CITY SEWER ON OWEN.
- (F) (N) 8" SS EMERGENCY SEWER TO UNDERGROUND NPC 5 EMERGENCY WASTE WATER HOLDING TANK.
- (G) UNDERGROUND NPC 5 EMERGENCY WASTE WATER HOLDING TANK, ESSTK-3, 12,000 GALLONS. PROVIDE LEVEL SENSOR FOR TANK MONITORING AND CONTROL WIRING CONDUIT BACK TO BAS IN WEST WING. SEE P-501 FOR DETAIL.
- (H) (E) 6" SS, FROM AMBULATORY CARE IE-334.50 SEWER DISCHARGE TO ESSTK-3 NEAR WEST WING IN EMERGENCY.
- (I) (N) VENT FOR EMERGENCY TANKS. TERMINATE AT MINIMUM 10FT ABOVE GROUND WITH GOOSENECK AND INSECT SCREEN. SEE DETAIL 2/P-1101.
- (J) RISER UP AND SUPPORT AGAINST EXTERIOR OF THE BUILDING.

LEGEND:

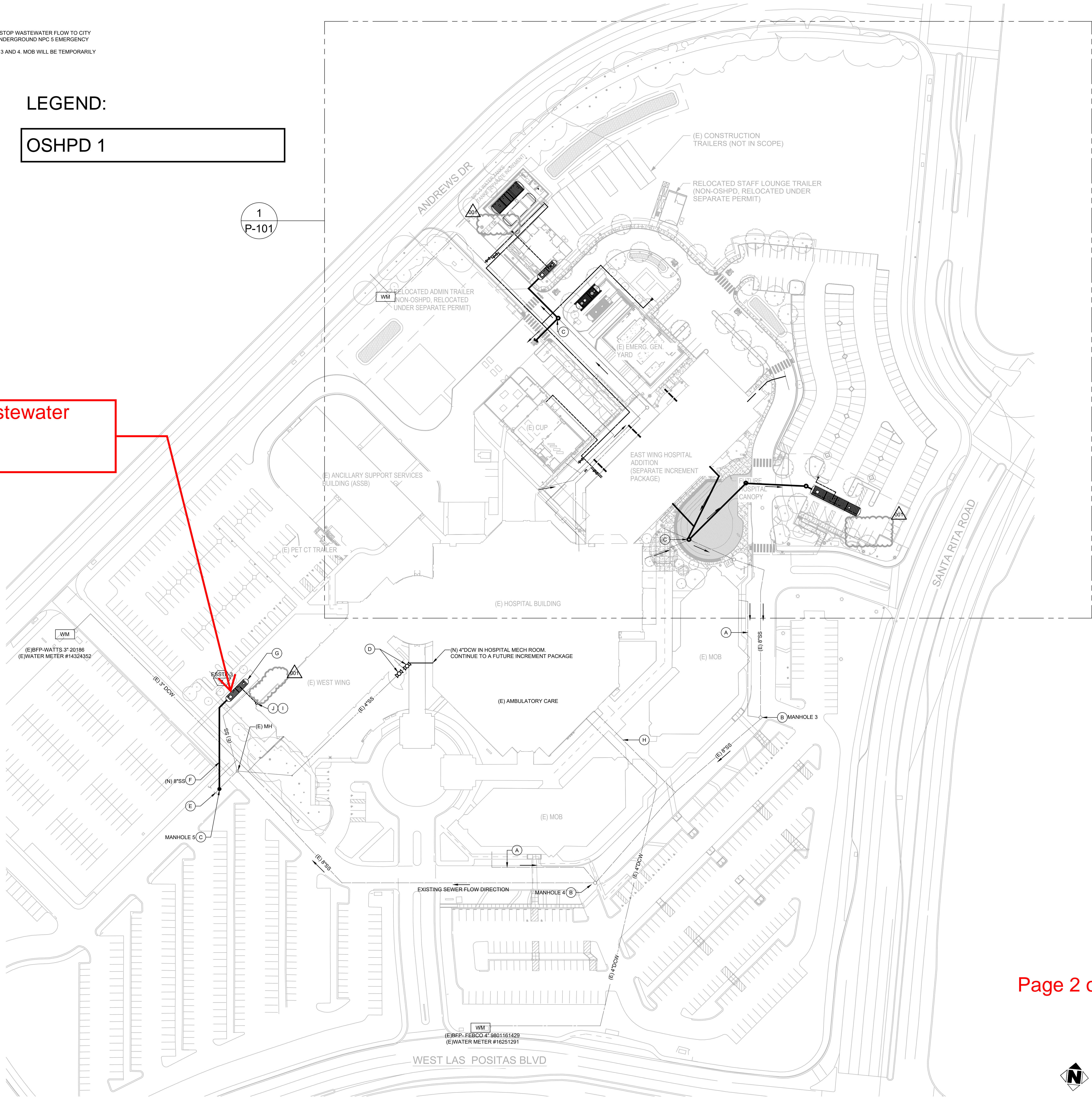
OSHPD 1

BLD-07543 WWT-03 Wastewater Tank - Bldg 14
OSHPD 1 - Future



2 PLUMBING VENT RISER SUPPORT DETAIL
NTS

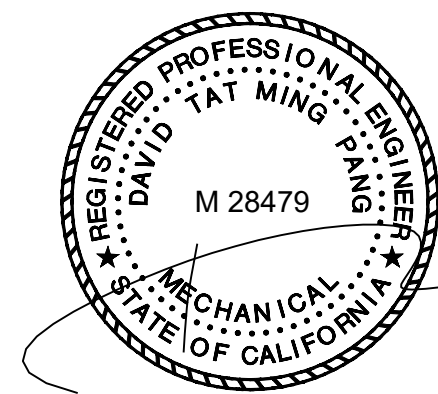
1 PLUMBING OVERALL SITE PLAN
1" = 50'-0"



Page 2 of 3

TAYLOR
design

DESIGN PROFESSIONAL STAMP



EXP. DATE: JUNE 30, 2027

TAYLORdesign

REVIEWED FOR GENERAL CONFORMANCE (OSHPD)

This document has been prepared by other design professionals or consultants who are licensed and/or authorized to prepare such drawings in this state. It has been examined by me for:

1) design intent and appears to meet the appropriate requirements of Title 24, California Code of Regulations and the project specifications prepared by me, and

2) coordination with my plans and specifications and is acceptable for incorporation into the construction of this project.

SIGNATURE PROVIDED PER CAC 7-115

LICENSE NUMBER: C-29929

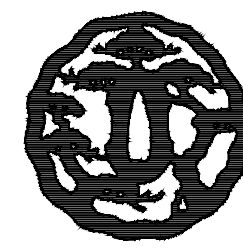
DATE: 05/27/2025

This Statement of General Conformance shall not be construed as relieving me of my rights, duties, and responsibilities under Section 12900 of the Health and Safety Code and Sections 7-115 (a-3), (b), and (c), 7-126 and 7-132 of Title 24, Part 1.

CONSULTANT

GAYNER ENGINEERS

1133 POST STREET
SAN FRANCISCO, CA 94109
TELEPHONE (415) 474-9500
FAX (415) 474-1363



AGENCY APPROVAL

REVISION SCHEDULE

NO.	REVISION NAME	DATE
001	INC1 BACKCHECK #1	05/27/2025

PROJECT INFORMATION

STANFORD HEALTH CARE
TRI-VALLEY
INCREMENT 1 - SITE WORK

FACILITY NAME: STANFORD HEALTH CARE - TRI-VALLEY
FACILITY ADDRESS: 5555 WEST LAS POSITAS BLVD PLEASANTON, CA 94588
OWNER PROJECT NUMBER: 2022514

AUTHORITY HAVING JURISDICTION: OSHPD
AGENCY FACILITY NUMBER: 16632
AGENCY BUILDING NUMBER: BLD 02 - 02533 & BLD 06 - 064430
AGENCY PROJECT NUMBER: 0250001-01-01

ARCHITECT PROJECT NO: 6370.101

SHEET TITLE: ISSUE DATE: 01/06/25

PLUMBING OVERALL
SITE PLAN

SHEET NUMBER

SCALE:

P-1101

NPC 5 EMERGENCY WASTEWATER DIVERTING DURING AN EMERGENCY :

1. AT THE DESTINATED SEWER DIVERSION MANHOLES 1 AND 2, HOSPITAL SHALL MANUALLY CLOSE THE DRAINAGE FLAP VALVES ON CITY. STOP FLOW TO CITY SEWER. MANUALLY OPEN THE DRAINAGE FLAP VALVES TO THE EMERGENCY WASTEWATER TANKS ALLOWING FLOW TO THE EMERGENCY WASTE HOLDING TANKS.

SHEET NOTES:

- ① NPC 5 EMERGENCY ABOVEGROUND WATER STORAGE TANK 55,000 GALLONS AND SPACE SHOWN FOR REFERENCE, ABOVEGROUND WATER TANK AND TREATMENT SYSTEM WILL BE IN THE FUTURE INCREMENT.
- ② WATER TANK TREATMENT, SKIDS TO BE PART OF FUTURE INCREMENT.
- ③ NPC 5 UNDERGROUND EMERGENCY WASTEWATER HOLDING TANK, ESSTK-2, 10,000 GALLONS. PROVIDE LEVEL SENSOR IN TANK AND CONTROL WIRING AND CONDUIT BACK TO BAS AT EAST WING ADDITION. SEE P-501 DETAIL 2 FOR REFERENCE.
- ④ NEW FUEL UNDERGROUND OIL TANK 20,000 GALLONS NOMINAL TO BE INSTALLED WITH THE NEW 2KW GENERATOR. SEE ENLARGED PLAN P-1403 AND DETAILS IN P-1001.
- ⑤ SEWER DIVERSION MANHOLE. SEE DETAIL 1/P-501. CITY SEWER SHALL BE FULLY OPENED AND EMERGENCY SEWER SHALL BE CLOSED DURING NORMAL OPERATION. FACILITY SHALL MANUALLY CLOSE THE ISOLATION VALVE ON THE CITY SEWER PIPE, AND OPEN THE ISOLATION VALVE ON THE EMERGENCY SEWER PIPE IN AN EMERGENCY.
- ⑥ NPC 5 UNDERGROUND EMERGENCY WASTEWATER HOLDING TANK, ESSTK-1, 50,000 GALLONS. PROVIDE LEVEL SENSOR IN TANK AND CONTROL WIRING AND CONDUIT BACK TO BAS AT EAST WING ADDITION. SEE DETAIL 2/P-1601 FOR REFERENCE.
- ⑦ NEW SANITARY SEWER PIPES FROM (N) EWA. TERMINATE 5' FT OUTSIDE BUILDING, AND CONNECT TO ONSITE SANITARY SEWER BY CIVIL.
- ⑧ NEW STORM DRAIN PIPES FROM (N) EWA. TERMINATES — BUILDING, AND — ONSITE STORM DRAIN SYSTEM BY CIVIL.
- ⑨ (E) 6" SS FROM HOSPITAL TO REMAIN.
- ⑩ INTERCEPT 4" CW TO CUP.
- ⑪ (N) 6" VENT FOR EMERGENCY TANKS, TERMINATE AT THE MINIMUM 10 FT ABOVE GROUND, WITH GOOSENECK AND INSECT SCREEN. SEE DETAIL 2/P-1401.
- ⑫ 1-1/2" O2 FROM CUP. SEE P-102 FOR CONTINUATION.
- ⑬ 1-1/2" DCW STUB OUT WITH ISOLATION VALVE TO PORTABLE DECON SHOWER SYSTEM INSTALLED BY OWNER.
- ⑭ NEW EMERGENCY SEWER LATERAL TO NPC 5 WASTE WATER HOLDING TANK. SEE CIVIL DRAWINGS FOR EXACT LOCATION.
- ⑮ NEW 4" DCW FROM NPC 5 EMERGENCY WATER TANK TO CUP.
- ⑯ NEW 6" DCW EMERGENCY WATER CONNECTION.
- ⑰ (E) SEWER PIPE FROM LOADING DOCK TO REMAIN.
- ⑱ (E) SEWER PIPE FROM (E) CUP REMAIN.
- ⑲ (N) SS TO CITY SEWER BY CIVIL. SEE CIVIL PLAN FOR CONTINUATION.
- ⑳ (N) DCW UNDERGROUND SUPPLY VALVE. SEE CIVIL DRAWINGS DETAIL 1/C-1700 FOR VALVE BOX DETAIL.
- ㉑ SS MANHOLE BY CIVIL. SEE CIVIL PLAN FOR EXACT LOCATION.
- ㉒ 6" DCW AND 4" DCW STUD-OUTS AT 6" ABOVE GROUND FOR FUTURE CONNECTION IN NEXT INCREMENT.
- ㉓ 6" VENT STUD-OUT ABOVE GROUND FOR FUTURE CONNECTION IN NEXT INCREMENT.

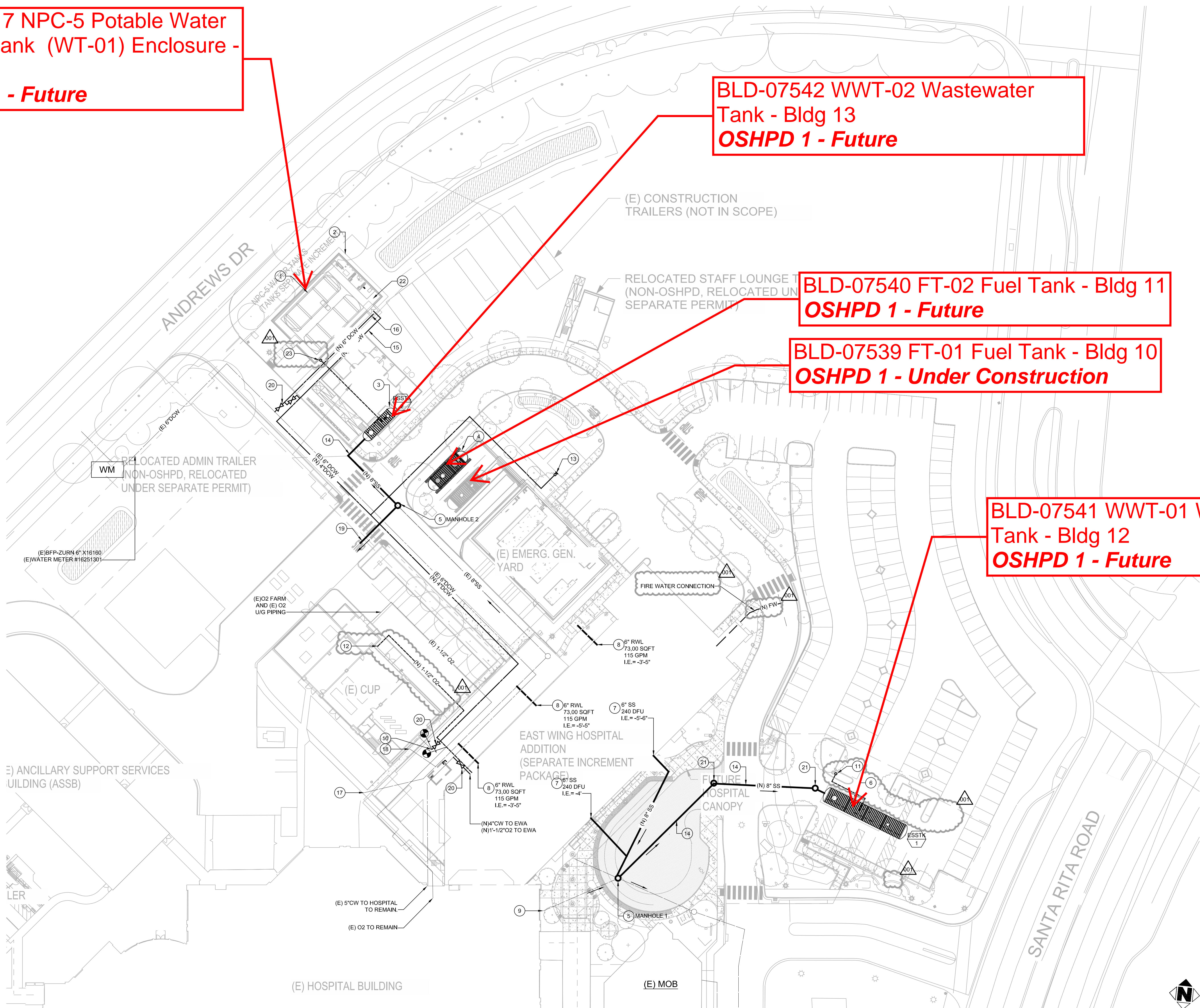
BLD-07317 NPC-5 Potable Water Storage Tank (WT-01) Enclosure - Bldg 10
OSHPD 1 - Future

BLD-07542 WWT-02 Wastewater Tank - Bldg 13
OSHPD 1 - Future

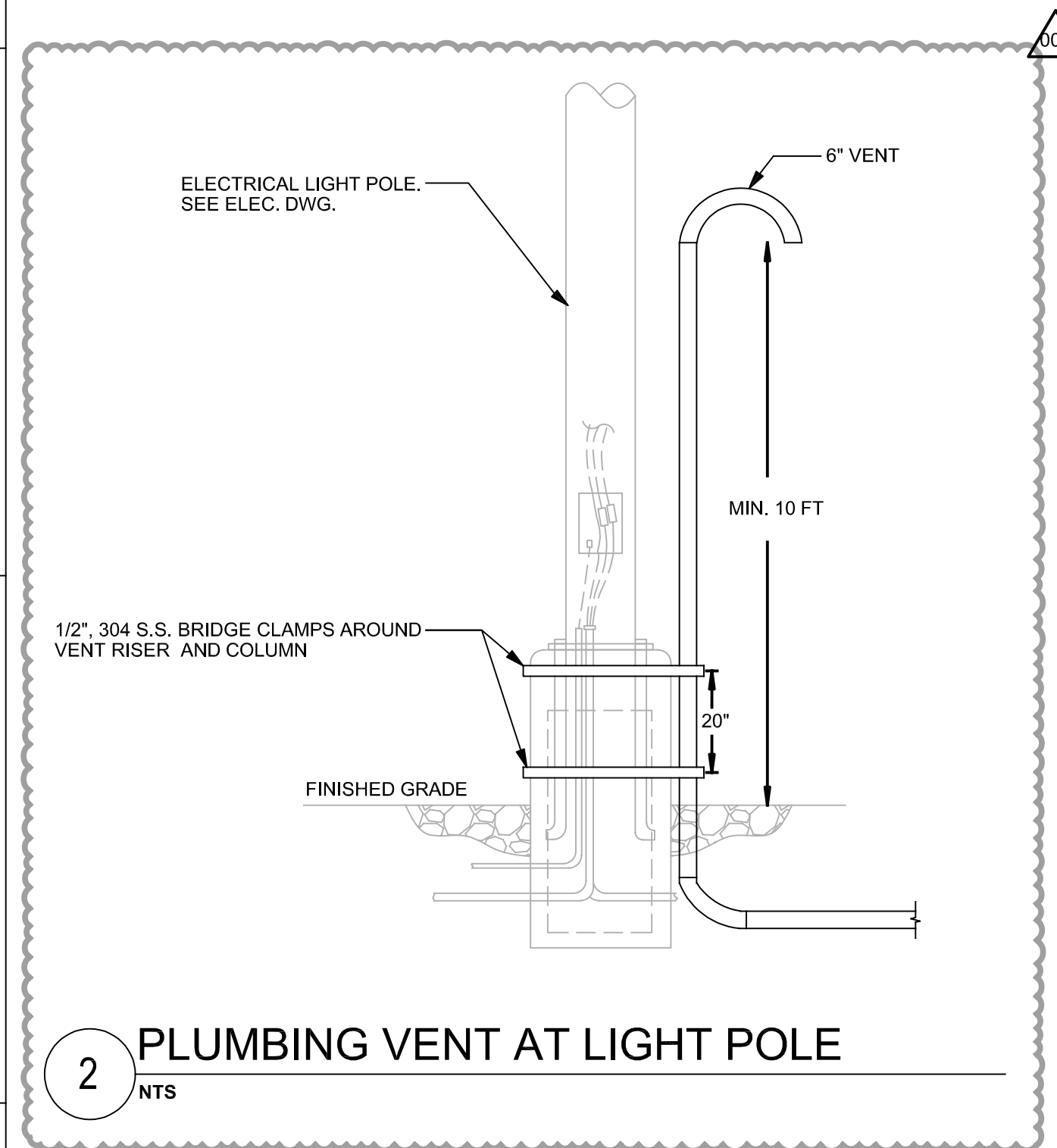
BLD-07540 FT-02 Fuel Tank - Bldg 11
OSHPD 1 - Future

BLD-07539 FT-01 Fuel Tank - Bldg 10
OSHPD 1 - Under Construction

BLD-07541 WWT-01 Wastewater Tank - Bldg 12
OSHPD 1 - Future



1 PLUMBING ENLARGED SITE PLAN
1/32" = 1'-0"

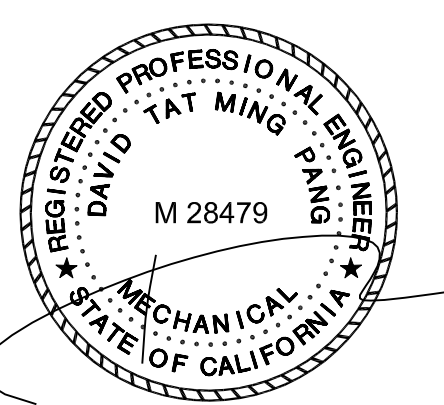


LEGEND:

OSHPD 1

TAYLOR
design

DESIGN PROFESSIONAL STAMP



EXP. DATE: JUNE 30, 2027

TAYLORdesign

REVIEWED FOR GENERAL CONFORMANCE (OSHPD)

This document has been prepared by other design professionals or consultants who are licensed and/or authorized to prepare such drawings in this state. It has been examined by me for:

1) design intent and appears to meet the appropriate requirements of Title 24, California Code of Regulations and the project specifications prepared by me, and

2) coordination with my plans and specifications and is acceptable for incorporation into the construction of this project.

SIGNATURE PROVIDED PER CAC 7-115

LICENSE NUMBER: C-29929

DATE: 05/27/2025

This Statement of General Conformance shall not be construed as relieving me of my rights, duties, and responsibilities under Section 12900 of the Health and Safety Code and Sections 7-115 (a.3), (b), and (c), 7-126 and 7-132 of Title 24, Part 1.

CONSULTANT

GAYNER
ENGINEERS

1133 POST STREET
SAN FRANCISCO, CA 94109
TELEPHONE (415) 474-9500
FAX (415) 474-1363



AGENCY APPROVAL

REVISION SCHEDULE

NO. 001 REVISION NAME INC1 BACKCHECK #1 DATE: 05/27/2025

PROJECT INFORMATION

**STANFORD HEALTH CARE
TRI-VALLEY
INCREMENT 1 - SITE WORK**

FACILITY NAME: STANFORD HEALTH CARE - TRI-VALLEY
FACILITY ADDRESS: 5555 WEST LAS POSITAS BLVD
PLEASANTON, CA 94588
OWNER PROJECT NUMBER: 2022514

AUTHORITY HAVING JURISDICTION: OSHPD
AGENCY FACILITY NUMBER: 16632
AGENCY BUILDING NUMBER: BLD 02 - 02533 & BLD 06 - 064430
AGENCY PROJECT NUMBER: 1250001-01-01

ARCHITECT PROJECT NO: 6370.101

SHEET TITLE SHEET 10 ISSUE DATE: 01/06/25

**PLUMBING ENLARGED
SITE PLAN**

SHEET NUMBER SCALE:

P-1401