

Rolling Hills Care Center

Facility No. 20159

01/05/21

BACK ALLEY

Alley Fire Exit Plan
Fire Sprinkler control

FACILITY # 20159
BUILDING # 03965

FE = Fire Extinguisher ⑤

FA = Fire Alarm ③

FE =

1. in dining room
2. end of east wing
3. end of west wing
4. nurse station
5. end of north wing

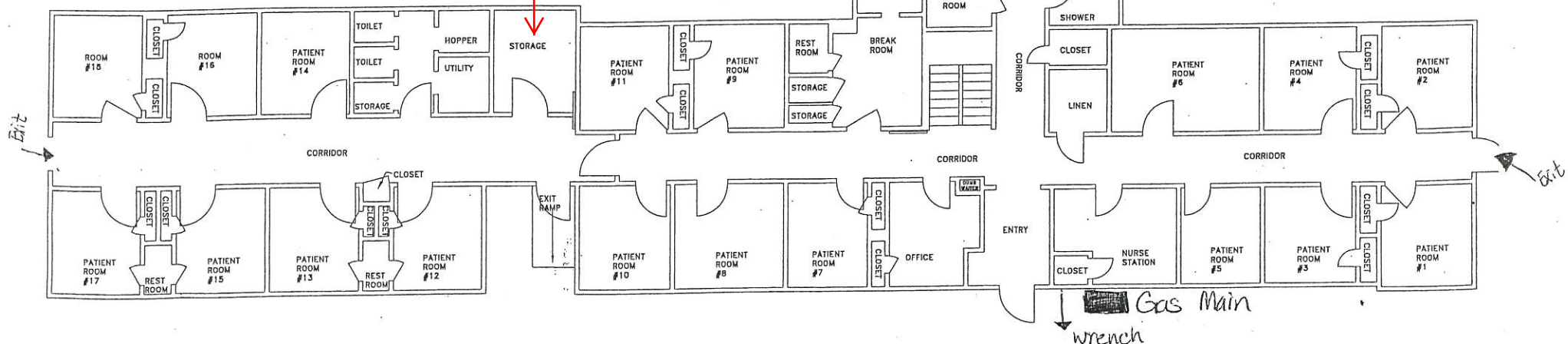
BLD-03965 - Main
Building - Bldg 01

Electrical main shut off
located in maintenance in
basement

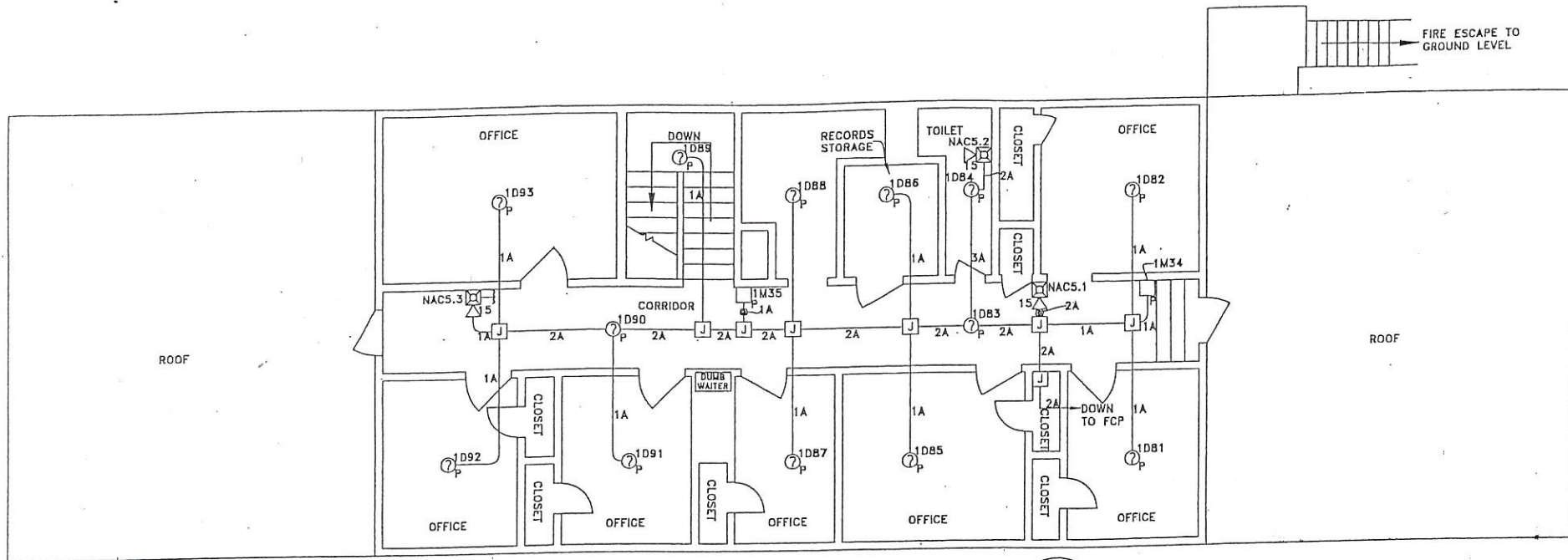
water shut off for west
side of basement bath

Main Floor

- FA =
1. west hall by rm. 12
 2. East Hall by rm. 3
 3. North Hall by dining rm.



Selma Convalescent Hospital Facility No. 20159



FLOOR PLAN SECOND FLOOR



FACILITY # 20159
BUILDING # 03965